

V&V Reference Report

L2 ASCDS Version : 8.4.4

Observation 10360 - L2 Version 2
Chandra X-Ray Center

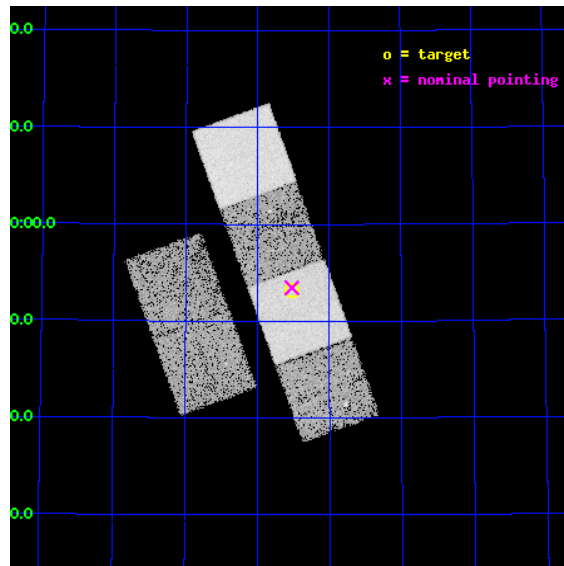
L2 Processing Date : May 30 2012

Contents

1	Front	2
2	OBI	3
2.1	OBI	3
2.1.1	Images	3
2.1.2	Bias	3
2.1.3	Parameters	4
2.1.4	Events	4
2.2	Compared Parameters	5
2.3	Aspect	6
2.4	Star Slots	9
2.4.1	Slot 3	9
2.4.2	Slot 4	10
2.4.3	Slot 5	11
2.4.4	Slot 6	12
2.4.5	Slot 7	13
2.5	FID Slots	14
2.5.1	Slot 0	14
2.5.2	Slot 1	15
2.5.3	Slot 2	16
A	Summary	17
A.1	Status	17
A.2	Comments	17

1 Front

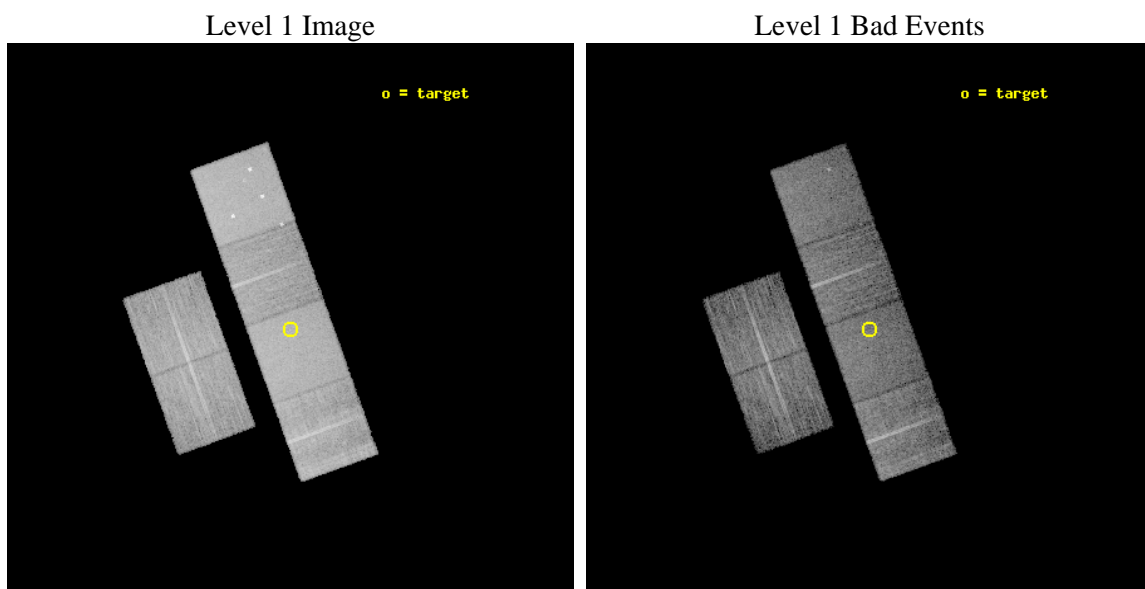
seq_num	701903	Sequence number
obs_id	10360	Observation id
title	Testing the Radiative-Driving Hypothesis of Quasar Outflows	Propos
observer	Dr. Rajib Ganguly	Principal investigator
object	SDSS J1718+5953	Source name
dtcycle	0	
cycle	P	events from which exps? Prim/Second/Both
ra_targ	259.632083	Observer's specified target RA [deg]
dec_targ	59.885944	Observer's specified target Dec [deg]
ra_nom	259.63014081786	Nominal RA [deg]
dec_nom	59.890732018614	Nominal Dec [deg]
roll_nom	70.158328433327	Nominal Roll [deg]
revision	2	Processing version of data
ontime	8072.6898174882	Sum of GTIs [s]
livetime	7970.4685582289	Livetime [s]
ontime2	8072.7308574915	Sum of GTIs [s]
ontime3	8072.5666974783	Sum of GTIs [s]
ontime5	8072.6487774849	Sum of GTIs [s]
ontime6	8072.6077374816	Sum of GTIs [s]
ontime7	8072.6898174882	Sum of GTIs [s]
ontime8	8072.525657475	Sum of GTIs [s]
l2events	137274	Number of level 2 events



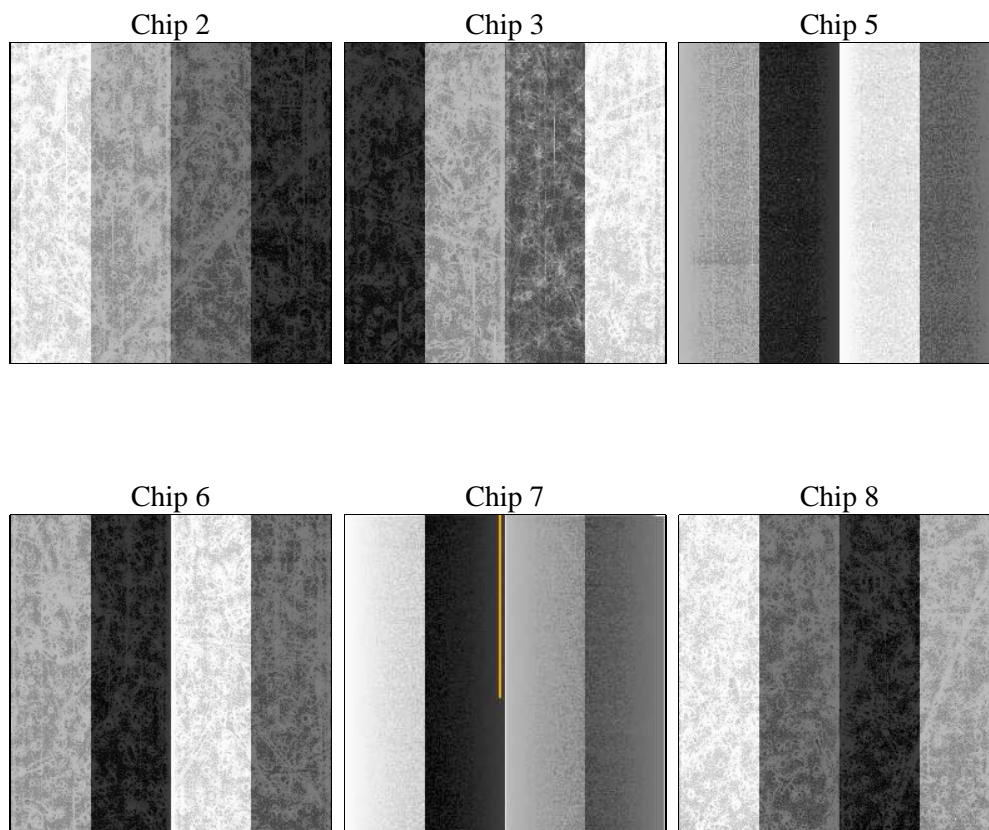
2 OBI

2.1 OBI

2.1.1 Images



2.1.2 Bias



2.1.3 Parameters

obi_num	0	Obi number	sched_exp_time	8000.000000	[s] Scheduled observation exposure time
ascdsver	8.4.4	Processing system revision	ontime	8072.6898174882	Sum of GTIs [s]
caldsver	4.4.9	 	ontime2	8072.7308574915	Sum of GTIs [s]
date	2012-05-30T23:48:41	Date and time of file creation	ontime3	8072.5666974783	Sum of GTIs [s]
revision	2	Processing version of data	ontime5	8072.6487774849	Sum of GTIs [s]
			ontime6	8072.6077374816	Sum of GTIs [s]
			ontime7	8072.6898174882	Sum of GTIs [s]
			ontime8	8072.525657475	Sum of GTIs [s]
			l1events	591731	Number of level 1 events

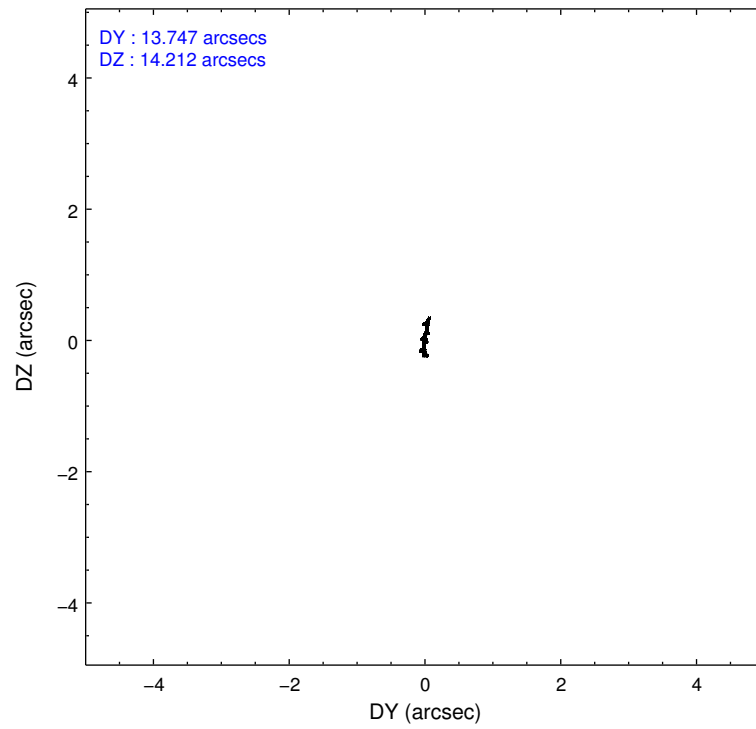
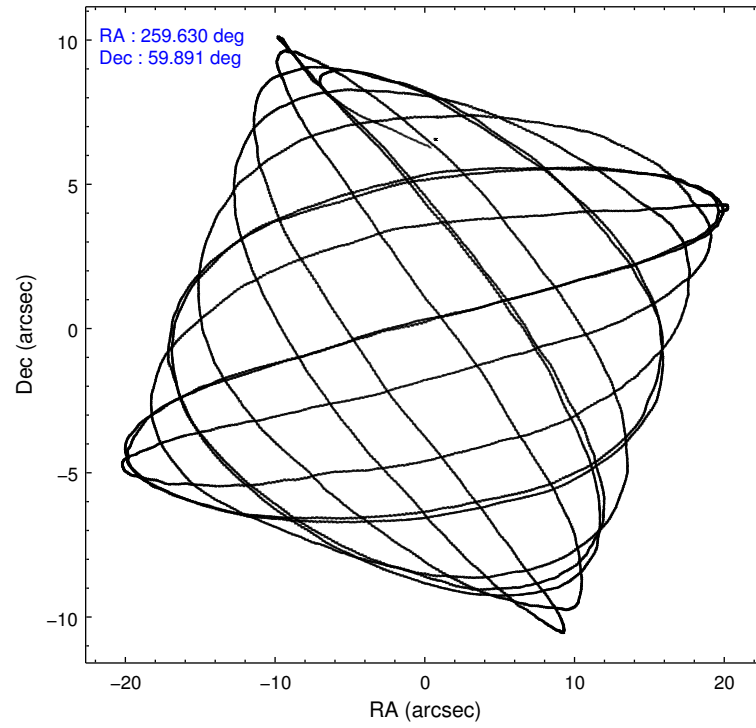
2.1.4 Events

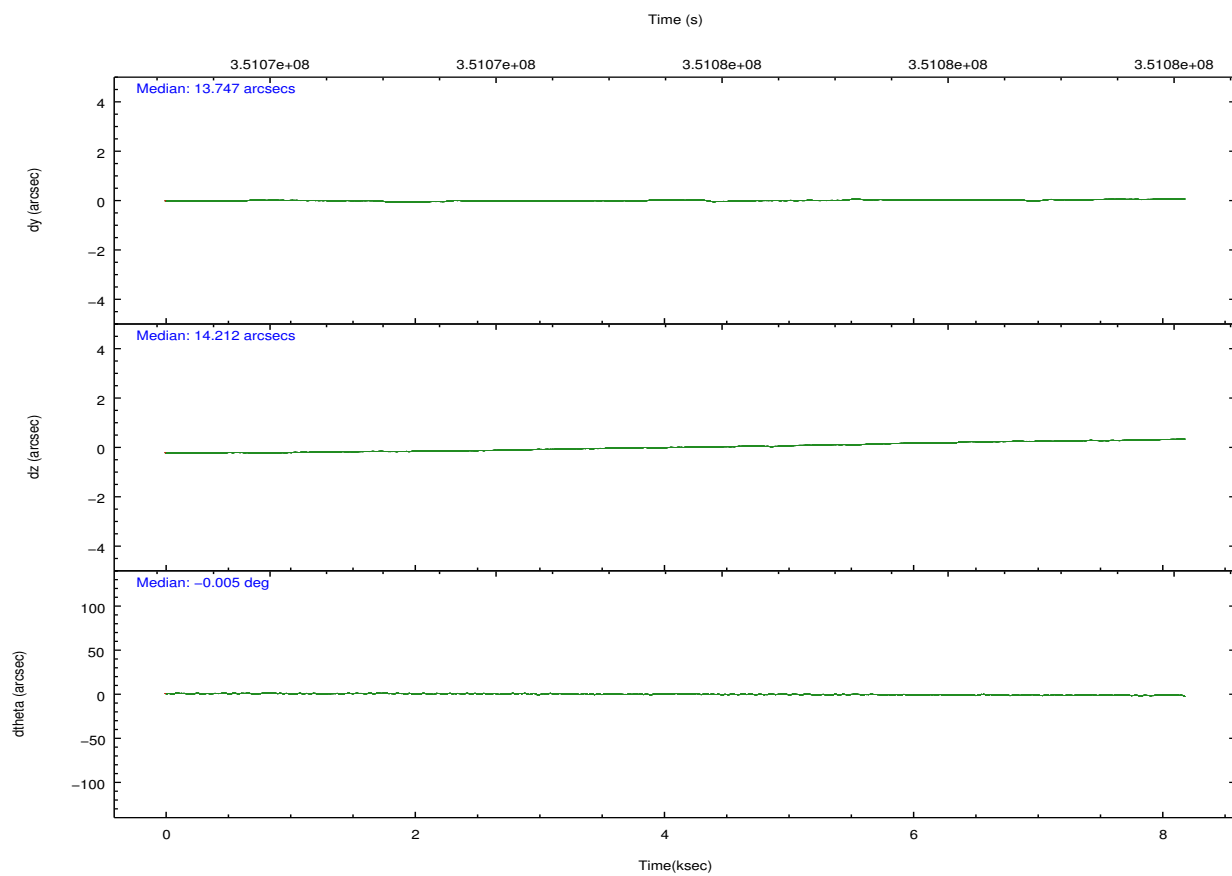
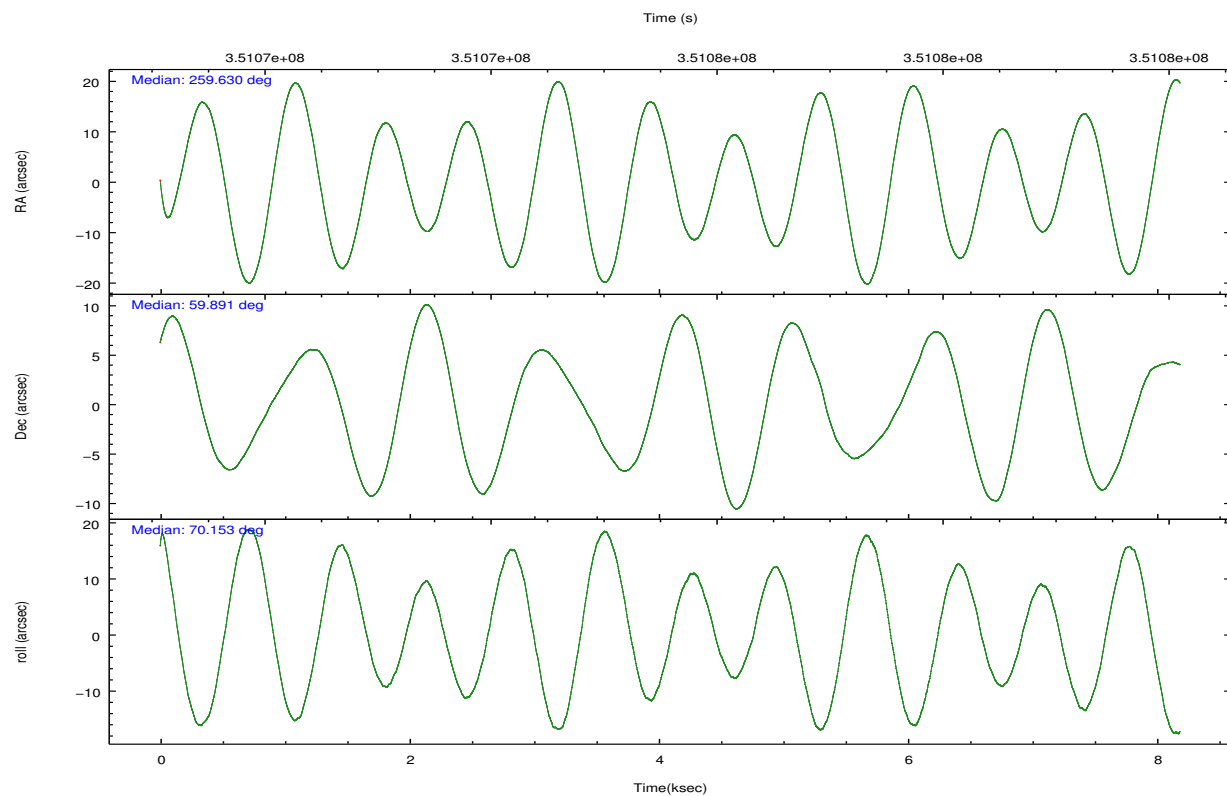
	ccd 2	ccd 3	ccd 5	ccd 6	ccd 7	ccd 8		ccd 2	ccd 3	ccd 5	ccd 6	ccd 7	ccd 8
level 1 events	82997	78399	130918	79270	115235	104912	grade 0 events	4139	4203	7504	3921	3953	7700
rejected events	73406	68737	69347	69253	67872	80904		4%	5%	5%	4%	3%	7%
rejected %	88%	87%	52%	87%	58%	77%	grade 1 events	52	54	354	41	136	86
								0%	0%	0%	0%	0%	0%
							grade 2 events	2027	1905	18691	2215	9723	5594
								2%	2%	14%	2%	8%	5%
							grade 3 events	909	894	2022	931	3933	2340
								1%	1%	1%	1%	3%	2%
							grade 4 events	895	915	2079	870	3914	2344
								1%	1%	1%	1%	3%	2%
							grade 5 events	3471	3761	9019	3995	10642	5148
								4%	4%	6%	5%	9%	4%
							grade 6 events	1624	1747	31290	2084	25859	6036
								1%	2%	23%	2%	22%	5%
							grade 7 events	69880	64920	59959	65213	57075	75664
								84%	82%	45%	82%	49%	72%

2.2 Compared Parameters

Parameter	Planned	Actual	Parameter	Planned	Actual
Instrument	ACIS	ACIS	Obspar format version number	7	7
Detector	ACIS-235678	ACIS-235678	Obspar file type	PREDICTED	ACTUAL
Grating	NONE	NONE	Obspar update status	NONE	UPDATED
Data mode	FAINT	FAINT	CCD I0 on	N	N
Observation mode	POINTING	POINTING	CCD I1 on	N	N
[deg] Pointing RA	259.640441	259.6301408178649	CCD I2 on	O1	Y
[deg] Pointing Dec	59.863852	59.89073201861409	CCD I3 on	O2	Y
[deg] Pointing Roll	69.992775	70.15832843332664	CCD S0 on	N	N
[mm] SIM focus pos	-0.684267	-0.6828225247311905	CCD S1 on	Y	Y
[mm] SIM defocus	0	0.001444936568705701	CCD S2 on	Y	Y
[mm] SIM translation stage pos	-190.132523	-190.1425803651734	CCD S3 on	Y	Y
[mm] SIM translation stage offset	0	0.01005778216563158	CCD S4 on	Y	Y
[s] Observation start time (MET)	351071666.184000	351070644.27908	CCD S5 on	N	N
Observation start date	2009-02-15T07:53:20	2009-02-15T07:37:24	Number of optional ACIS chips dropped	0	0
[s] Observation end time (MET)	351079666.184000	351080306.95456	On-chip summing requested	N	N
Observation end date	2009-02-15T10:06:40	2009-02-15T10:18:26	Subarray requested	NONE	NONE
Read mode	TIMED	TIMED	Alternating exposures requested	N	N
			[s] Primary exposure time	0.000000	3.2

2.3 Aspect



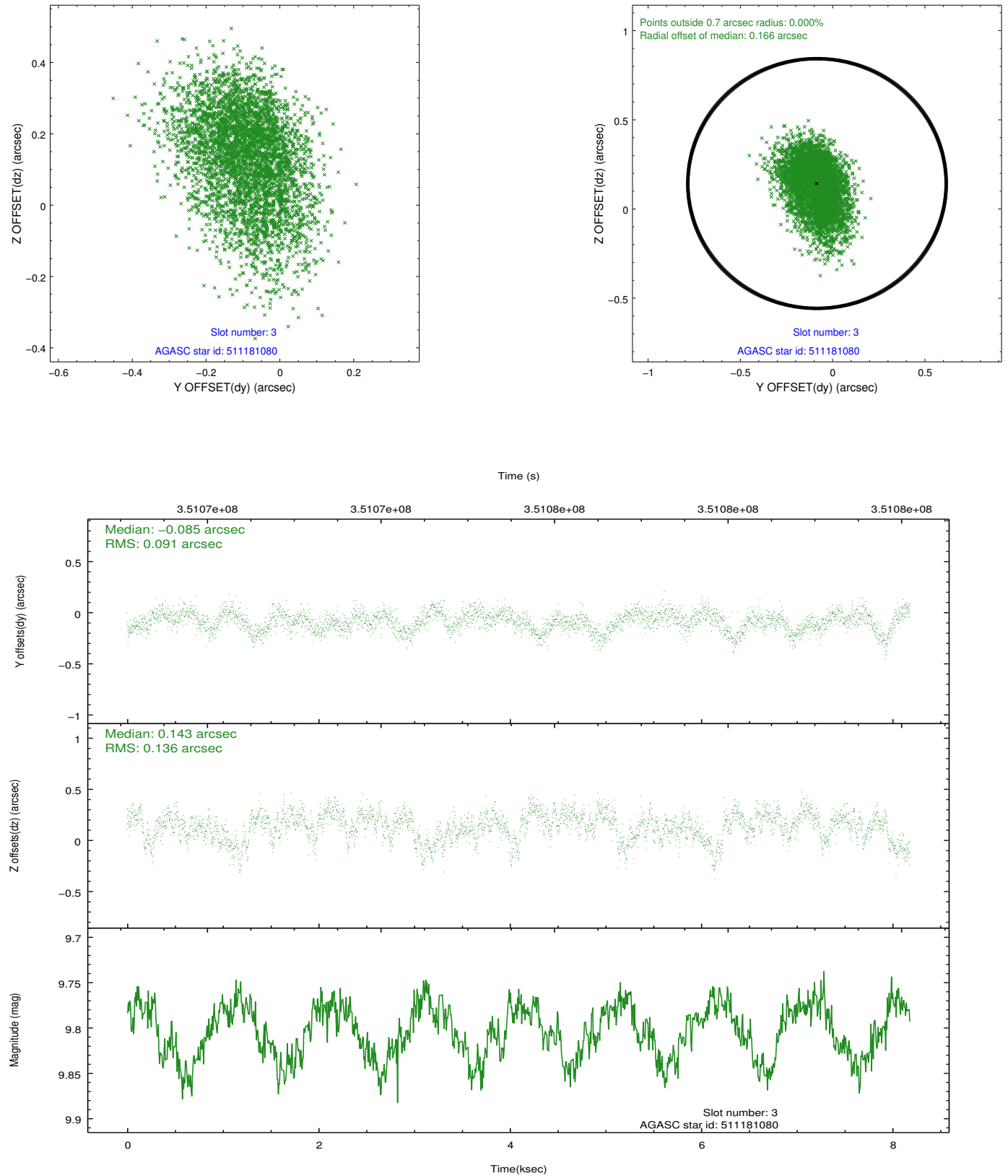


Slot Statistics

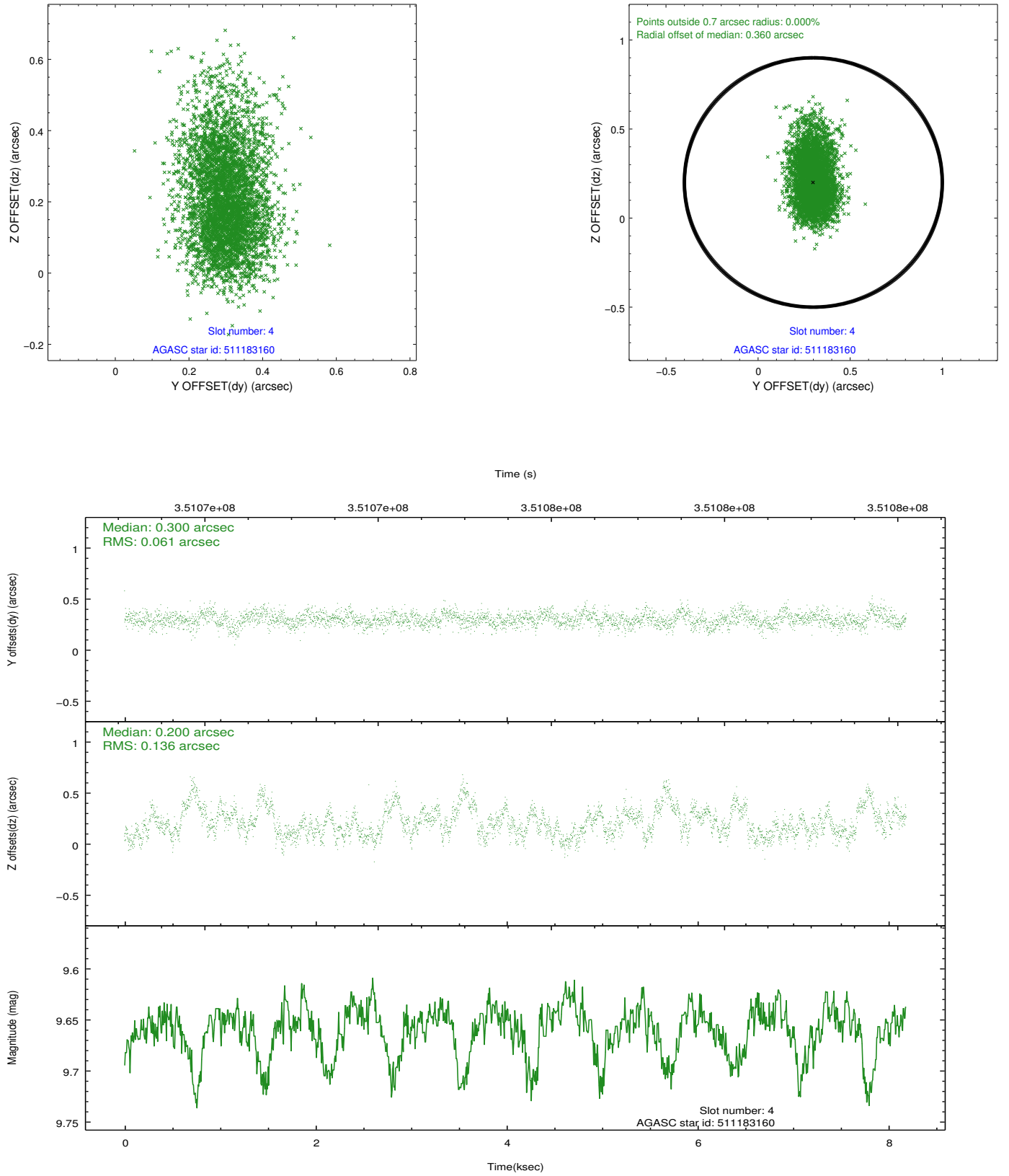
slot	status	id	mag	n_pts	med_dy	med_dz	dr1	dr2	ra	dec	mean_y	mean_z
0	FID	ACIS-S-1	7.02	1997	0.041	0.001	0.008	0.013	0.000000	0.000000	929.39	-1731.16
1	FID	ACIS-S-4	7.02	1997	0.125	-0.016	0.009	0.015	0.000000	0.000000	2147.25	172.27
2	FID	ACIS-S-5	7.05	1997	-0.193	0.027	0.006	0.011	0.000000	0.000000	-1818.85	166.67
3	GUIDE	511181080	9.80	3990	-0.085	0.143	0.171	0.289	260.972109	59.782719	574.14	-2358.05
4	GUIDE	511183160	9.66	3992	0.300	0.200	0.152	0.272	260.499263	59.520612	-614.27	-1893.19
5	GUIDE	511187368	8.70	3992	0.116	0.059	0.096	0.151	260.113514	59.198929	-1947.76	-1638.04
6	GUIDE	550249320	8.38	3992	-0.192	-0.152	0.086	0.133	259.166381	60.646604	2363.82	1751.04
7	GUIDE	550254760	6.16	3993	-0.137	-0.245	0.096	0.145	259.122492	60.670614	2420.45	1854.13

2.4 Star Slots

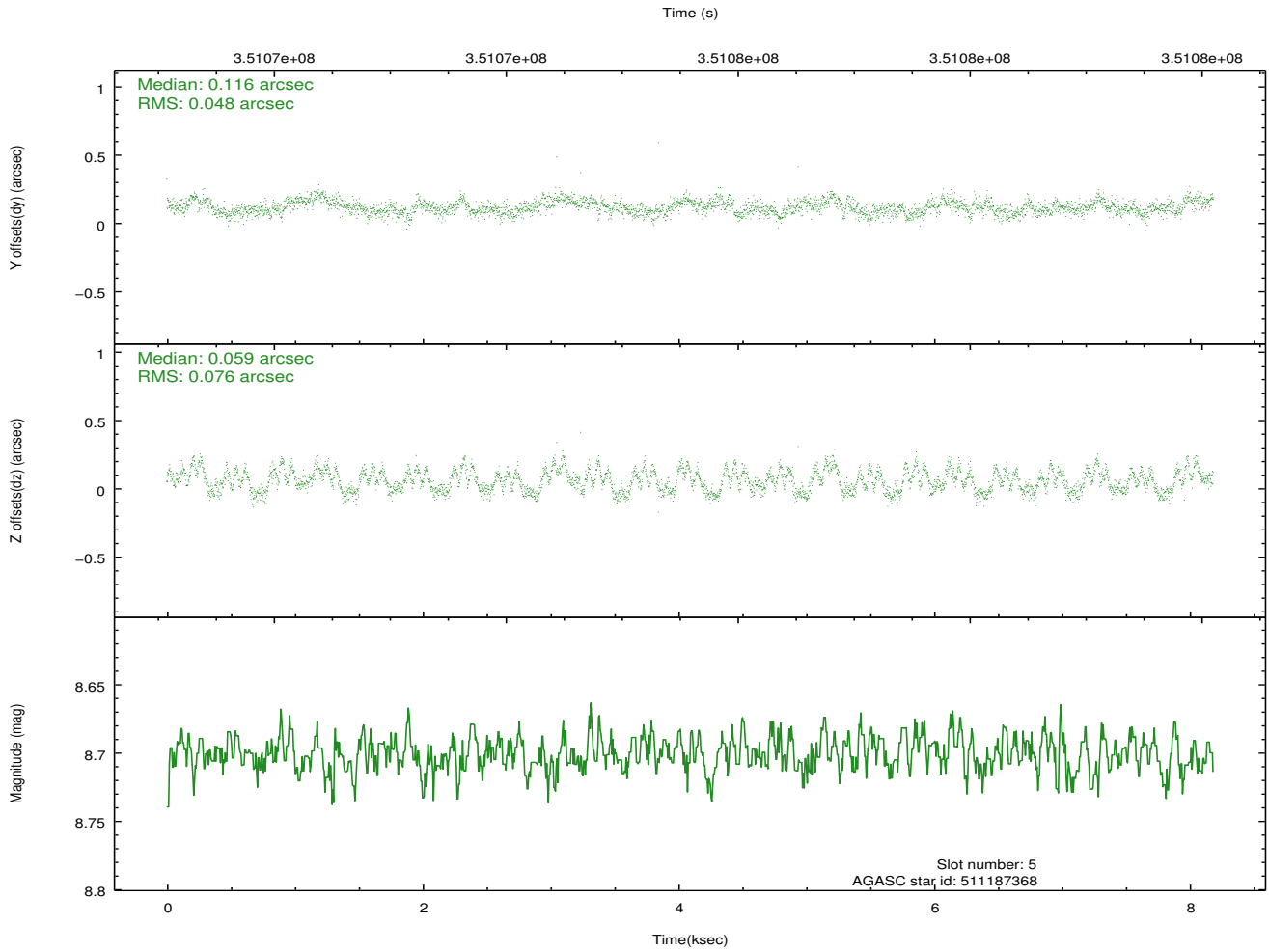
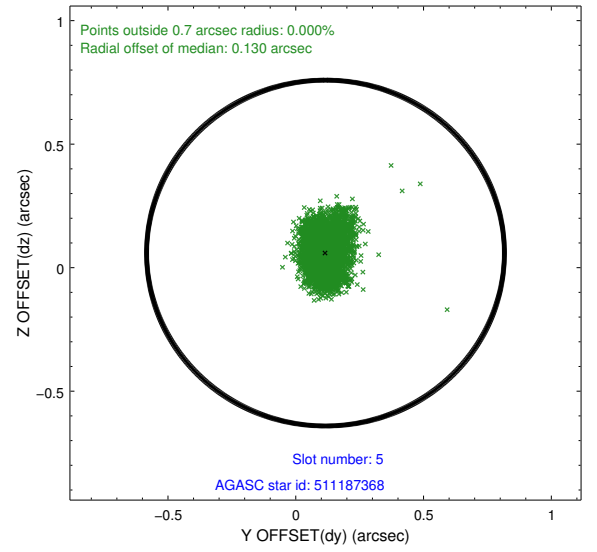
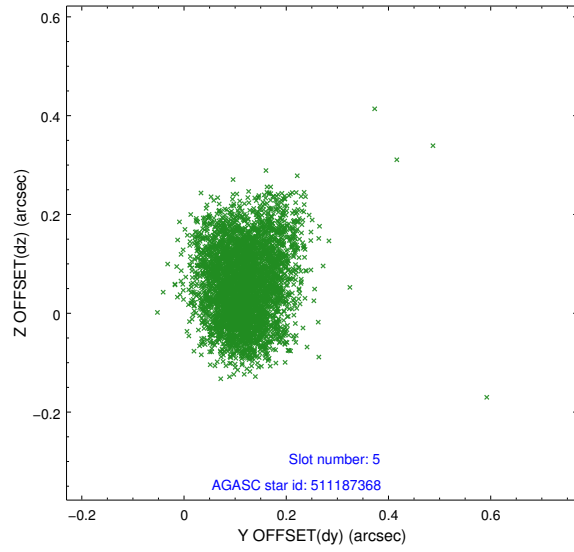
2.4.1 Slot 3



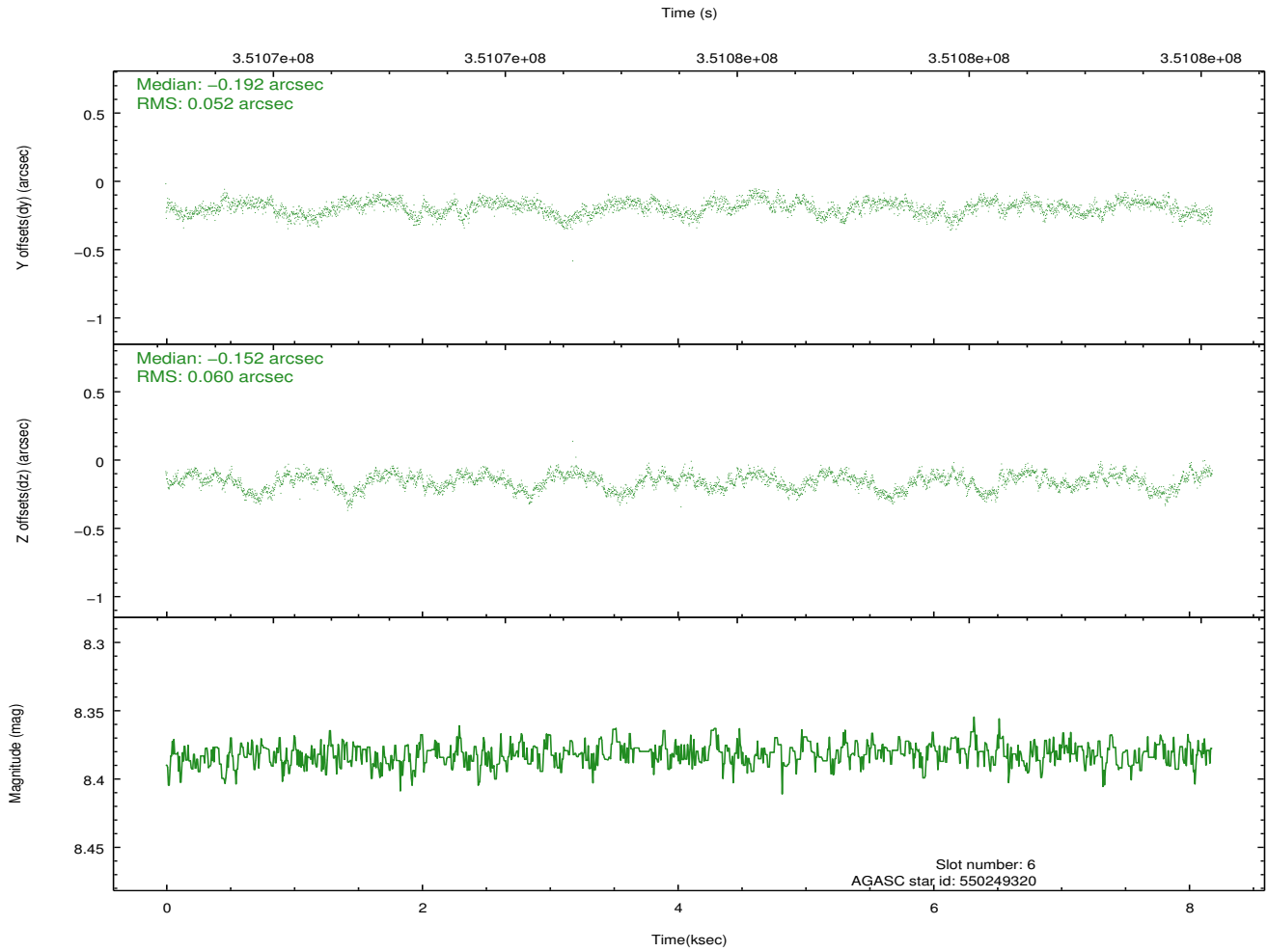
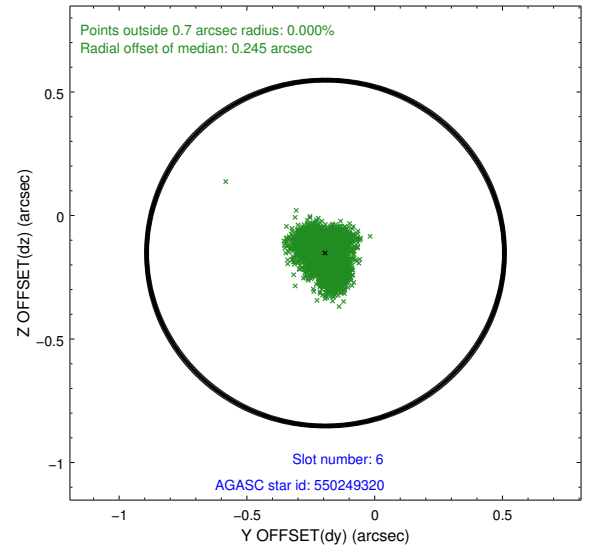
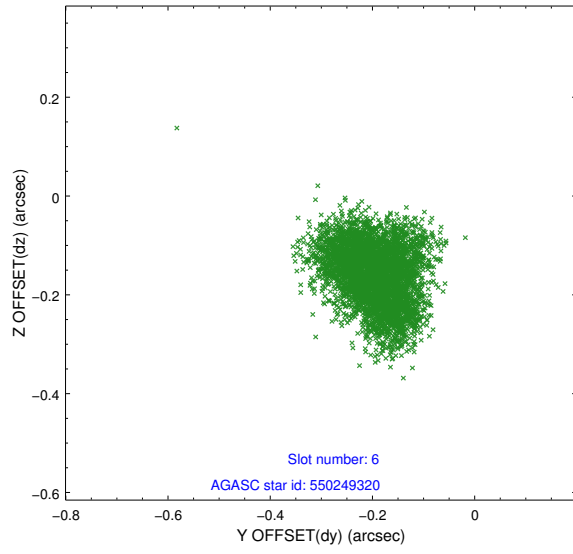
2.4.2 Slot 4



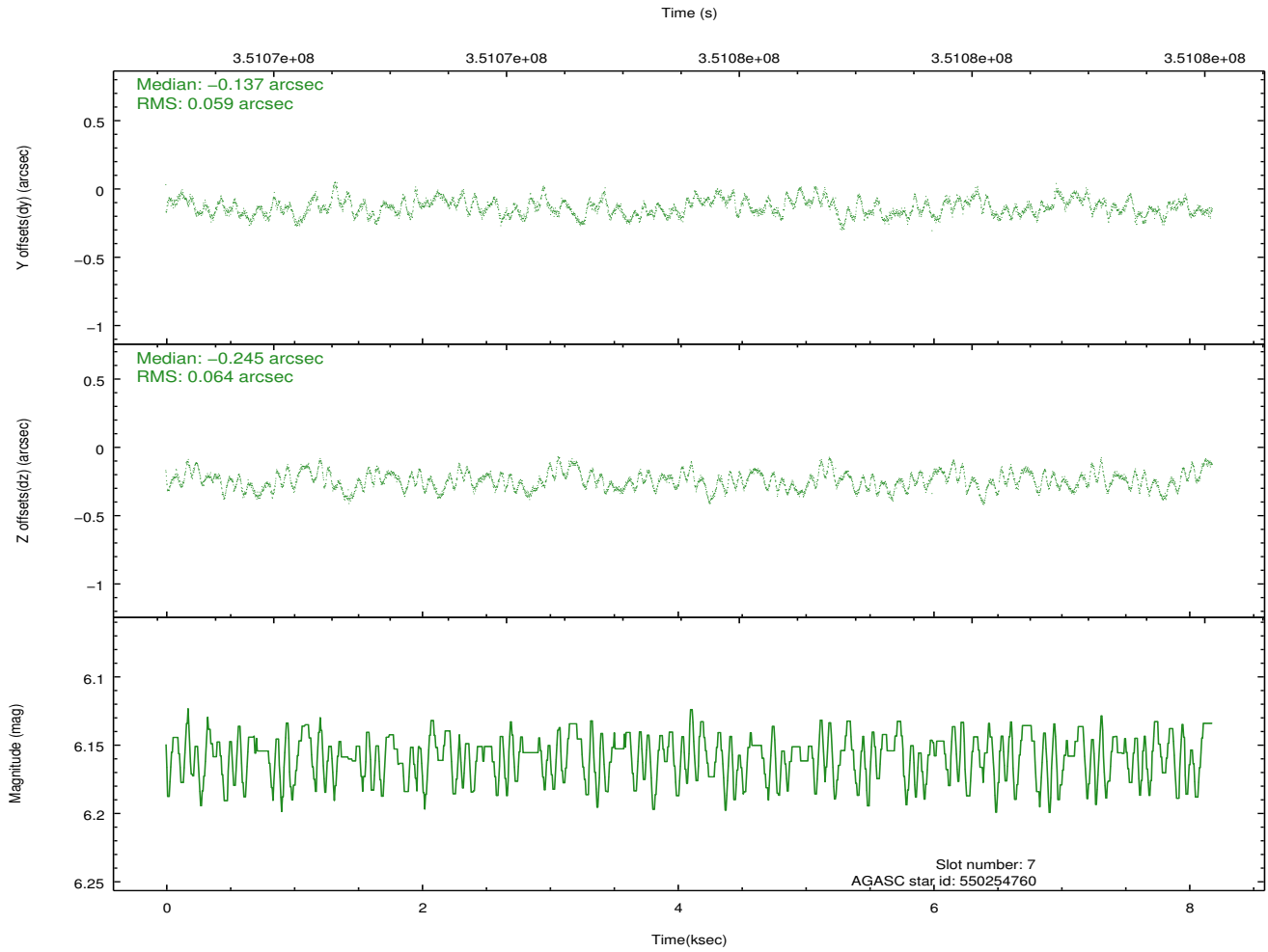
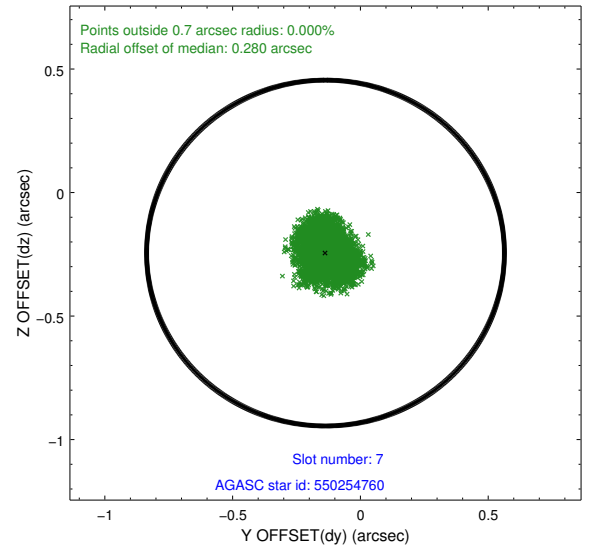
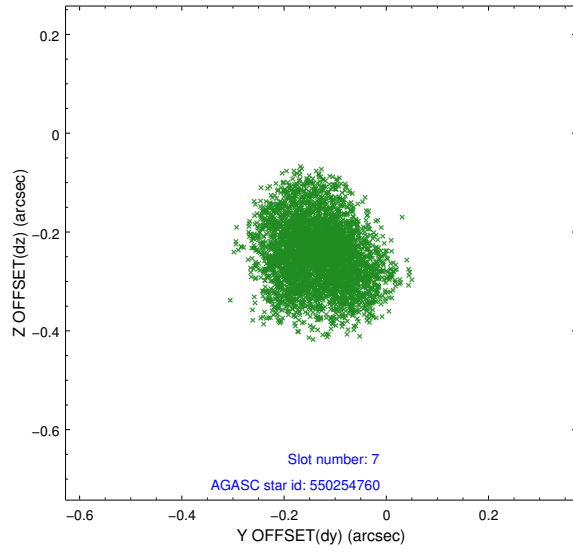
2.4.3 Slot 5



2.4.4 Slot 6

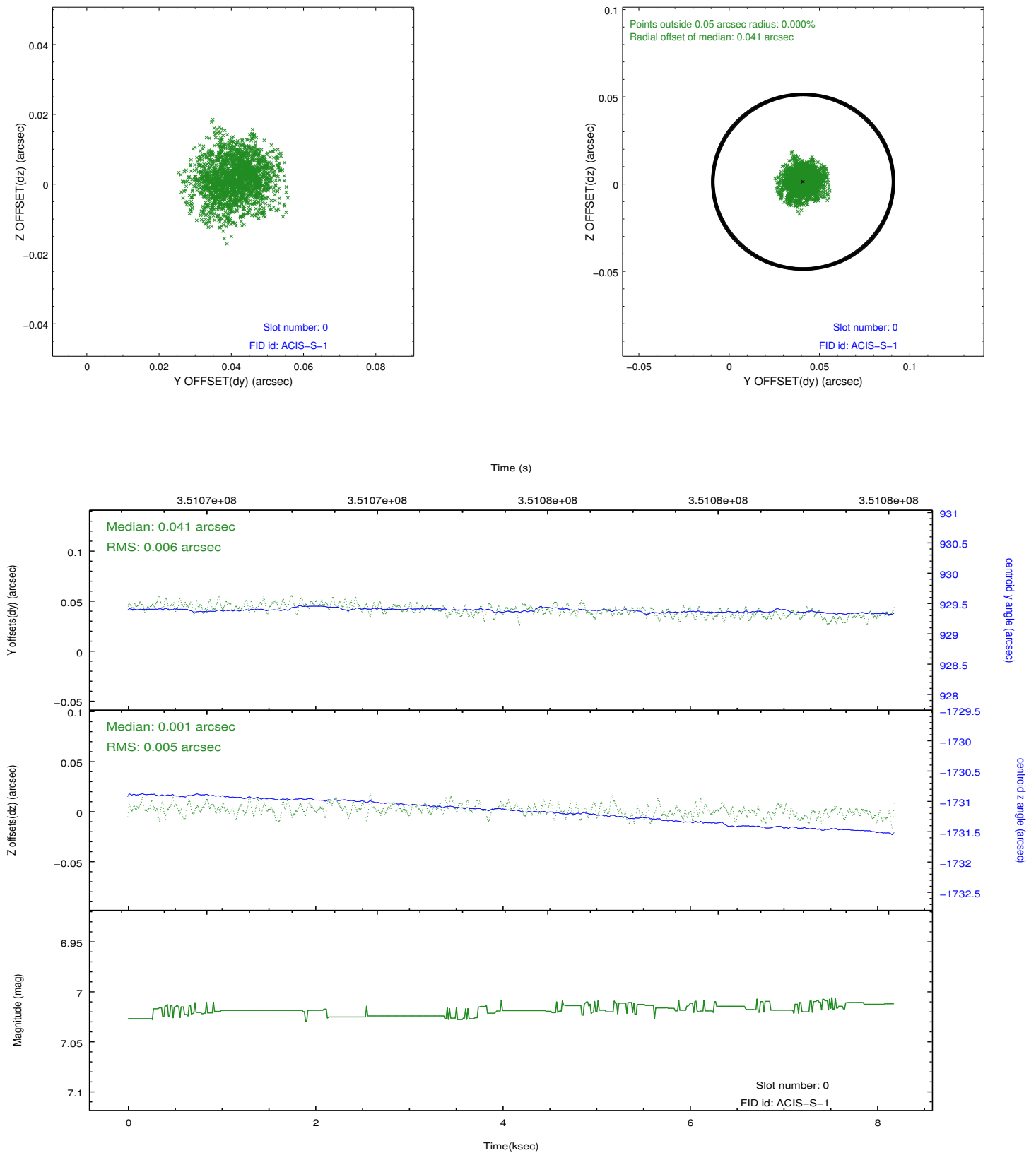


2.4.5 Slot 7

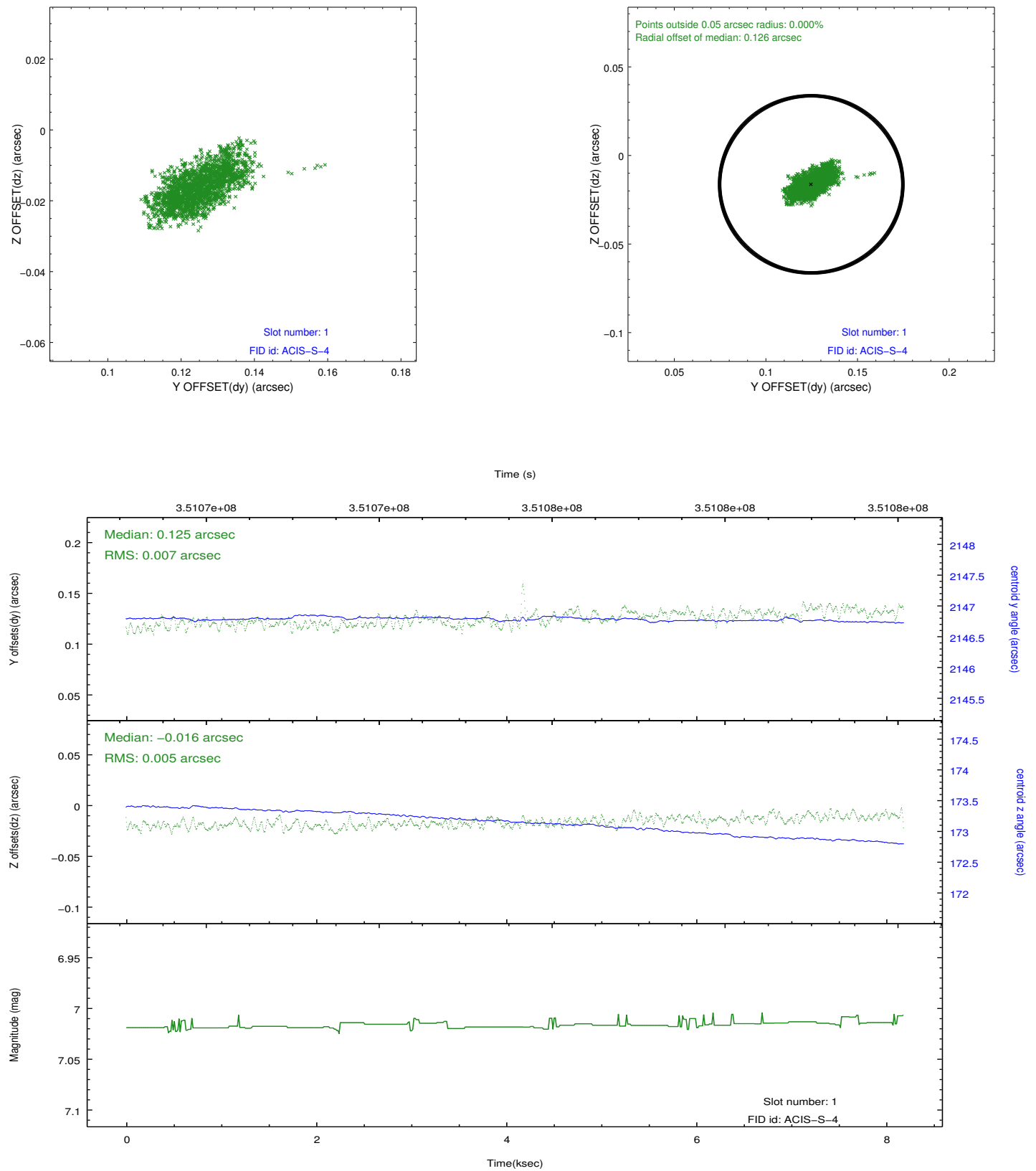


2.5 FID Slots

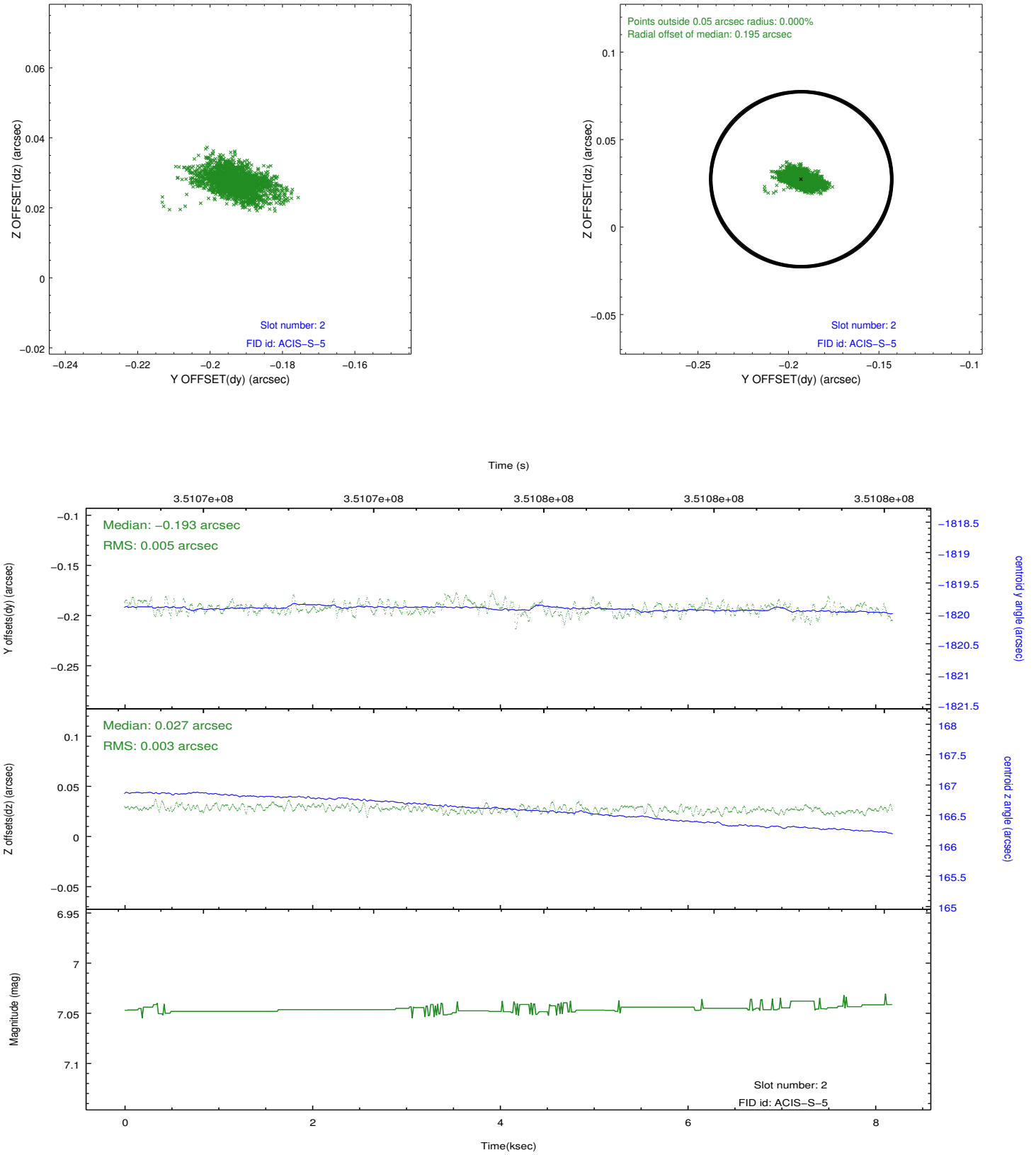
2.5.1 Slot 0



2.5.2 Slot 1



2.5.3 Slot 2



A Summary

A.1 Status

V&V Scientist	Joy Nichols
V&V Date (YYYY-MM-DD)	2012.06.05
V&V Edition	1
V&V Disposition and Status	OK
V&V Charge Time	8.0735999699235

A.2 Comments