

V&V Reference Report

L2 ASCDS Version : 8.4.4

Observation 10330 - L2 Version 2
Chandra X-Ray Center

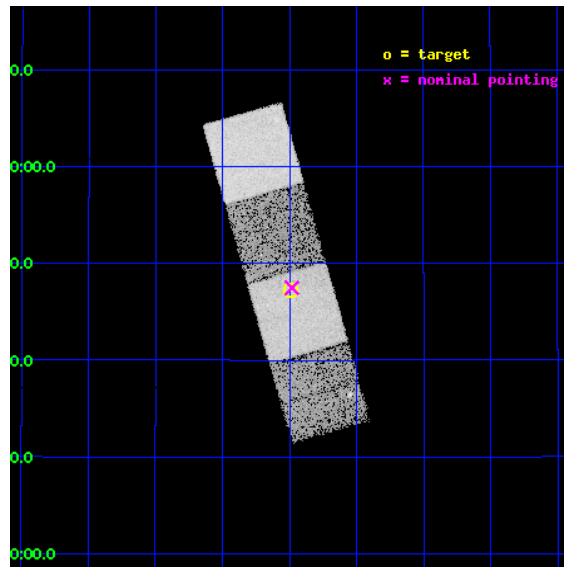
L2 Processing Date : May 29 2012

Contents

1	Front	2
2	OBI	3
2.1	OBI	3
2.1.1	Images	3
2.1.2	Bias	3
2.1.3	Parameters	4
2.1.4	Events	4
2.2	Compared Parameters	5
2.3	Aspect	6
2.4	Star Slots	9
2.4.1	Slot 3	9
2.4.2	Slot 4	10
2.4.3	Slot 5	11
2.4.4	Slot 6	12
2.4.5	Slot 7	13
2.5	FID Slots	14
2.5.1	Slot 0	14
2.5.2	Slot 1	15
2.5.3	Slot 2	16
A	Summary	17
A.1	Status	17
A.2	Comments	17

1 Front

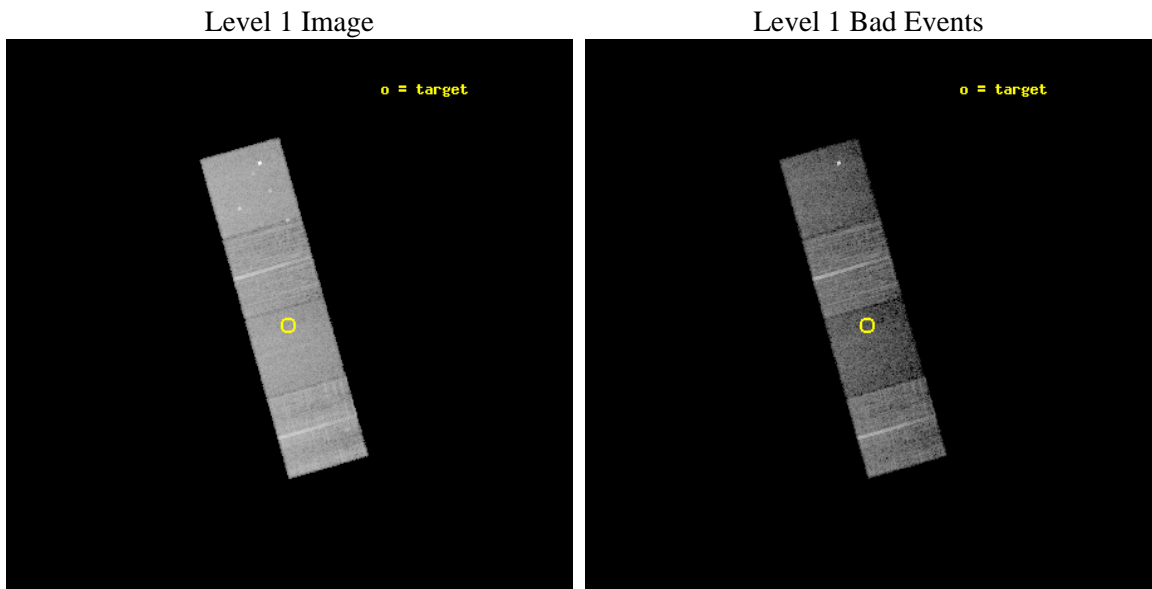
seq_num	701873	Sequence number
obs_id	10330	Observation id
title	Luminous Compton-thick QSOs at z~1	Proposal title
observer	Dr. Roberto Gilli	Principal investigator
object	SDSS J080859.33+204711.8	Source name
dtcycle	0	
cycle	P	events from which exps? Prim/Second/Both
ra_targ	122.247083	Observer's specified target RA [deg]
dec_targ	20.786611	Observer's specified target Dec [deg]
ra_nom	122.24561725774	Nominal RA [deg]
dec_nom	20.791302590225	Nominal Dec [deg]
roll_nom	74.157178291803	Nominal Roll [deg]
revision	2	Processing version of data
ontime	10130.800077915	Sum of GTIs [s]
livetime	9998.4337167107	Livetime [s]
ontime5	10130.800077915	Sum of GTIs [s]
ontime6	10130.800077915	Sum of GTIs [s]
ontime7	10130.800077915	Sum of GTIs [s]
ontime8	10127.659077644	Sum of GTIs [s]
l2events	102600	Number of level 2 events



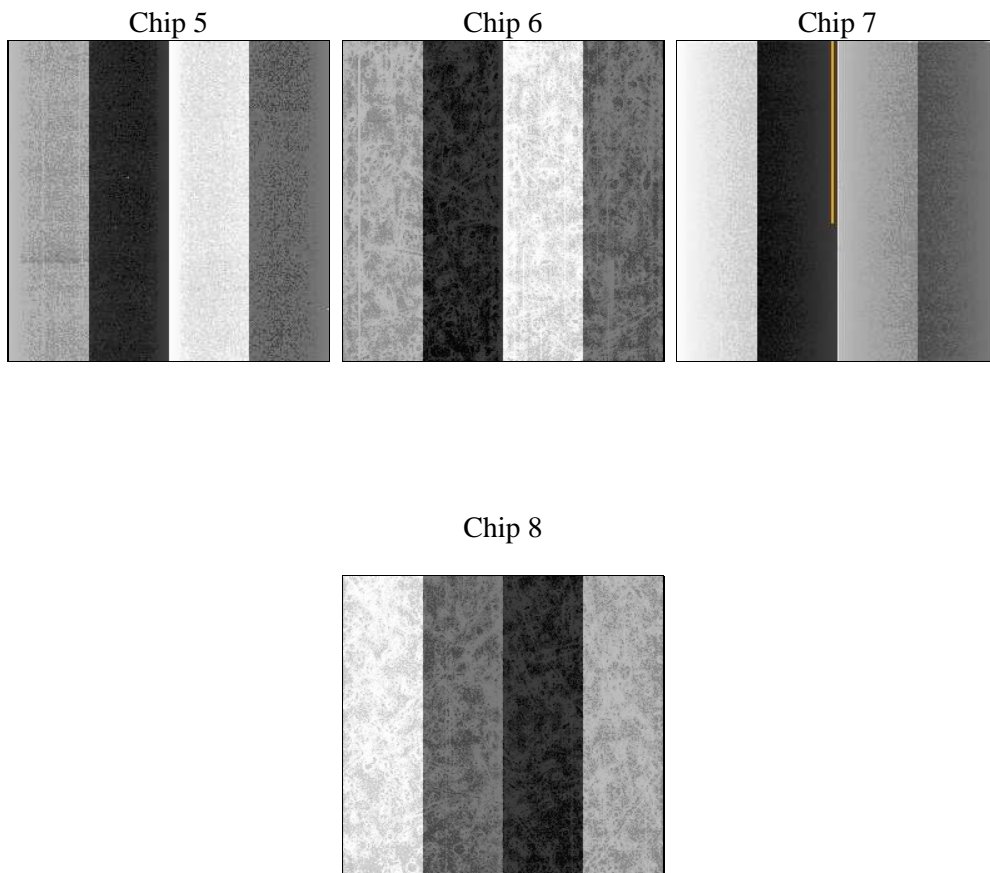
2 OBI

2.1 OBI

2.1.1 Images



2.1.2 Bias



2.1.3 Parameters

obi_num	1	Obi number	sched_exp_time	10000.000000	[s] Scheduled observation exposure time
ascdsver	8.4.4	Processing system revision	ontime	10130.800077915	Sum of GTIs [s]
caldbver	4.4.9	 	ontime5	10130.800077915	Sum of GTIs [s]
date	2012-05-29T14:32:27	Date and time of file creation	ontime6	10130.800077915	Sum of GTIs [s]
revision	2	Processing version of data	ontime7	10130.800077915	Sum of GTIs [s]
			ontime8	10127.659077644	Sum of GTIs [s]
			l1events	380118	Number of level 1 events

2.1.4 Events

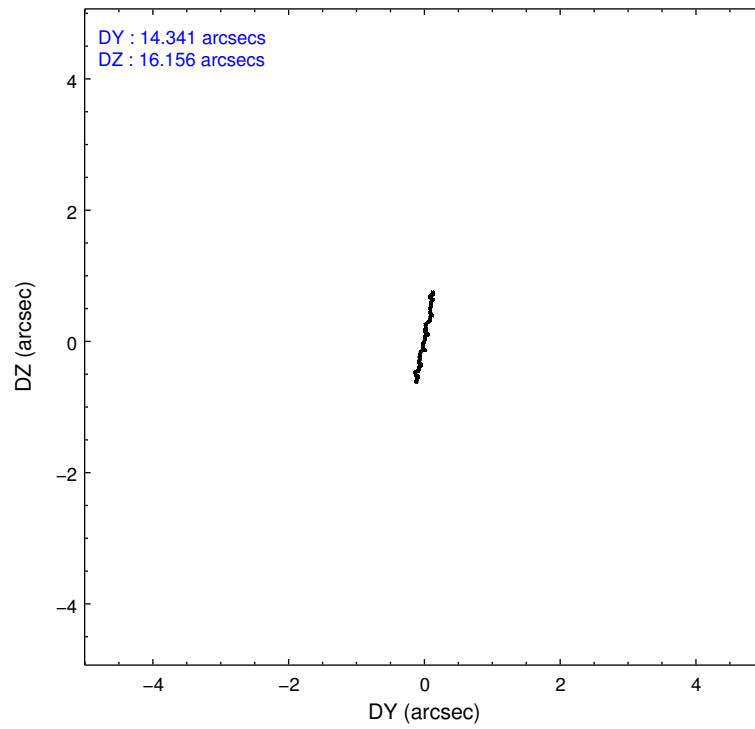
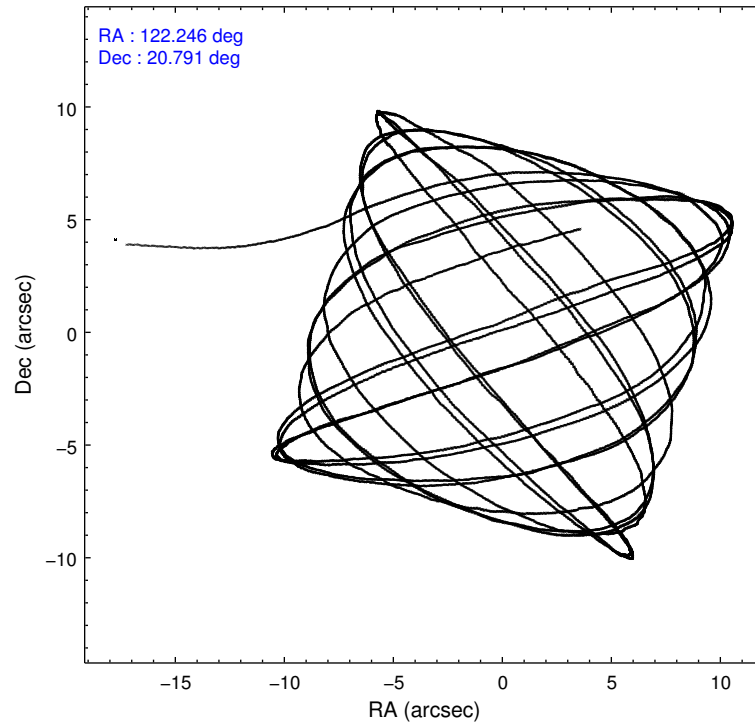
	ccd 5	ccd 6	ccd 7	ccd 8
level 1 events	108934	84147	80542	106495
rejected events	53856	75793	42511	80558
rejected %	49%	90%	52%	75%

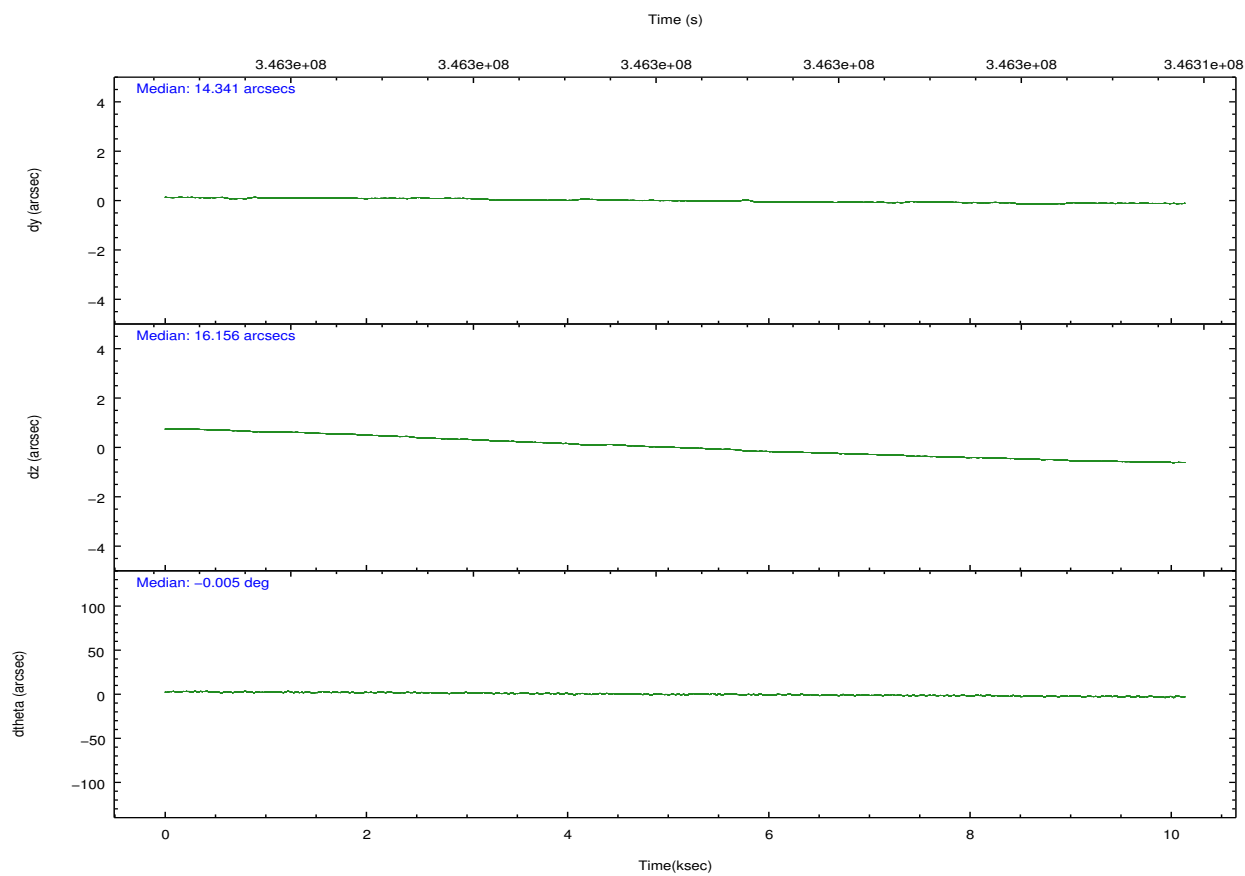
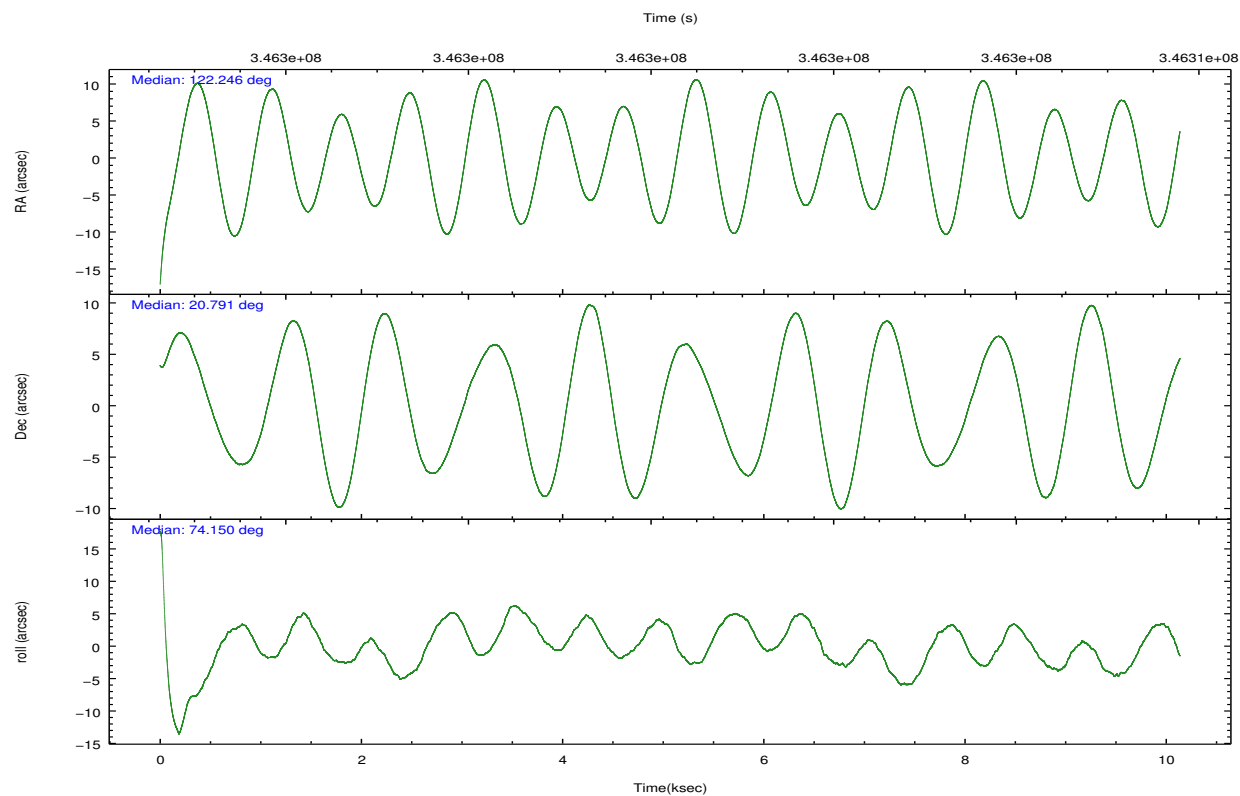
	ccd 5	ccd 6	ccd 7	ccd 8
grade 0 events	5851	3258	4197	7667
	5%	3%	5%	7%
grade 1 events	270	41	149	73
	0%	0%	0%	0%
grade 2 events	18325	1979	8469	6274
	16%	2%	10%	5%
grade 3 events	2457	937	3775	3134
	2%	1%	4%	2%
grade 4 events	2468	886	3727	2800
	2%	1%	4%	2%
grade 5 events	8714	2967	8839	4533
	7%	3%	10%	4%
grade 6 events	28638	1690	19728	7371
	26%	2%	24%	6%
grade 7 events	42211	72389	31658	74643
	38%	86%	39%	70%

2.2 Compared Parameters

Parameter	Planned	Actual	Parameter	Planned	Actual
Instrument	ACIS	ACIS	Obspar format version number	7	7
Detector	ACIS-5678	ACIS-5678	Obspar file type	PREDICTED	ACTUAL
Grating	NONE	NONE	Obspar update status	NONE	UPDATED
Data mode	VFAINT	VFAINT	Number of optional ACIS chips dropped	0	0
Observation mode	POINTING	POINTING	On-chip summing requested	N	N
[deg] Pointing RA	122.253204	122.2456172577412	Subarray requested	NONE	NONE
[deg] Pointing Dec	20.764854	20.79130259022464	Alternating exposures requested	N	N
[deg] Pointing Roll	73.997838	74.15717829180288	[s] Primary exposure time	0.000000	3.1
[mm] SIM focus pos	-0.684267	-0.6828225247311905			
[mm] SIM defocus	0	0.001444936568705701			
[mm] SIM translation stage pos	-190.132523	-190.1425803651734			
[mm] SIM translation stage offset	0	0.01005778216563158			
[s] Observation start time (MET)	346295271.184000	346293972.8676			
Observation start date	2008-12-22T01:06:46	2008-12-22T00:46:12			
[s] Observation end time (MET)	346305271.184000	346305831.09319			
Observation end date	2008-12-22T03:53:26	2008-12-22T04:03:51			
Read mode	TIMED	TIMED			

2.3 Aspect



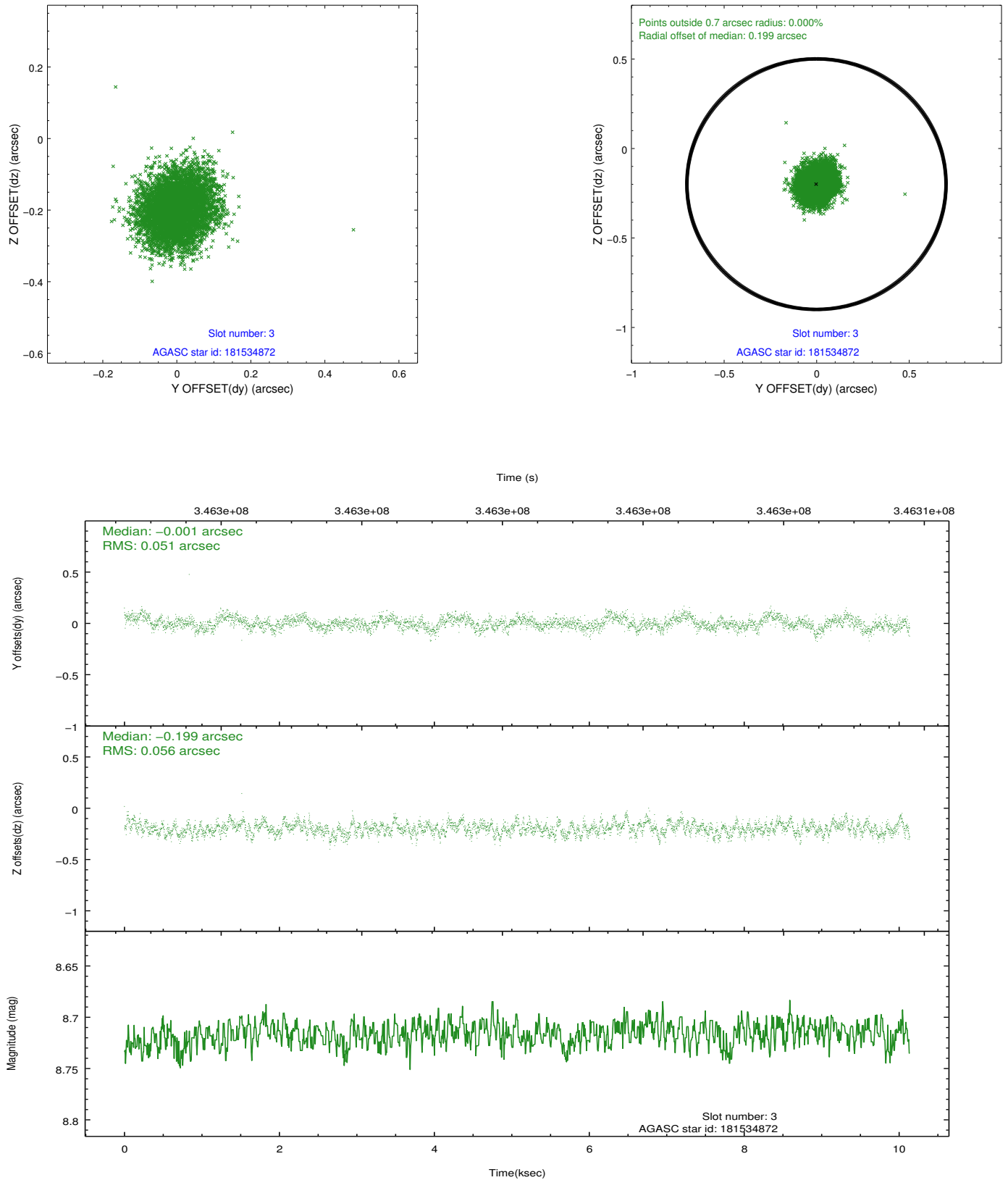


Slot Statistics

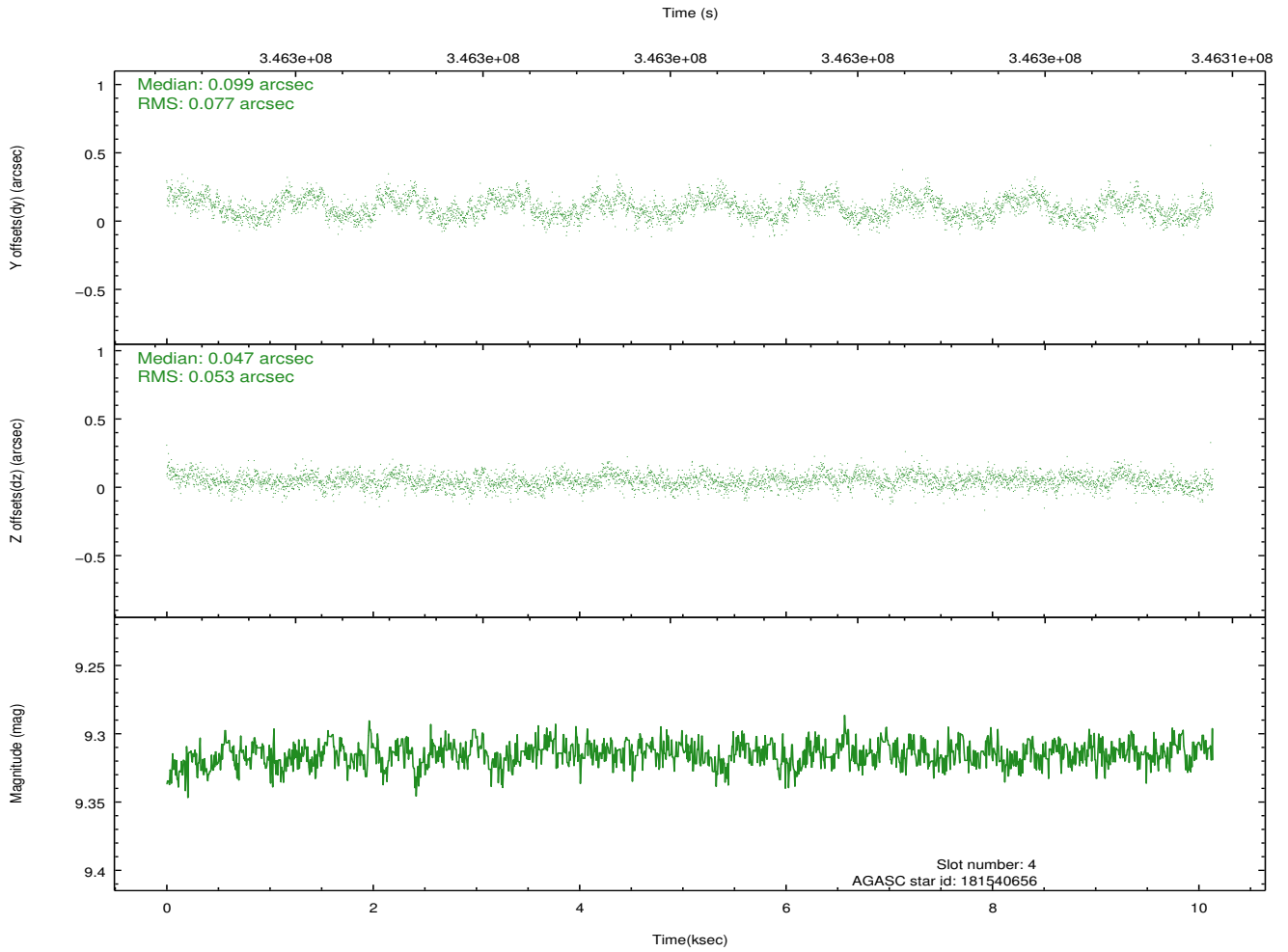
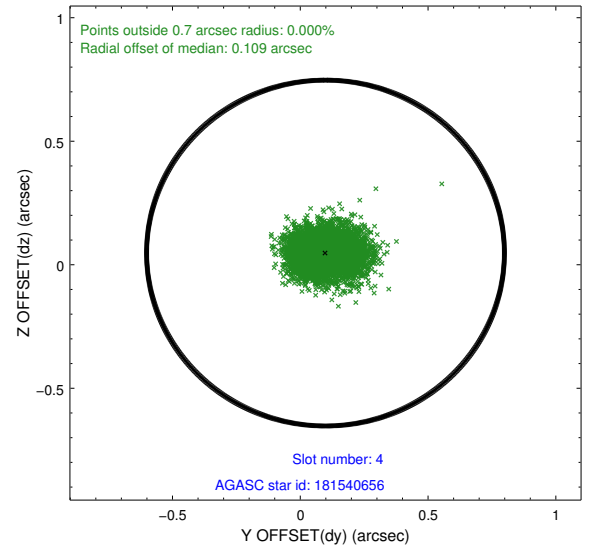
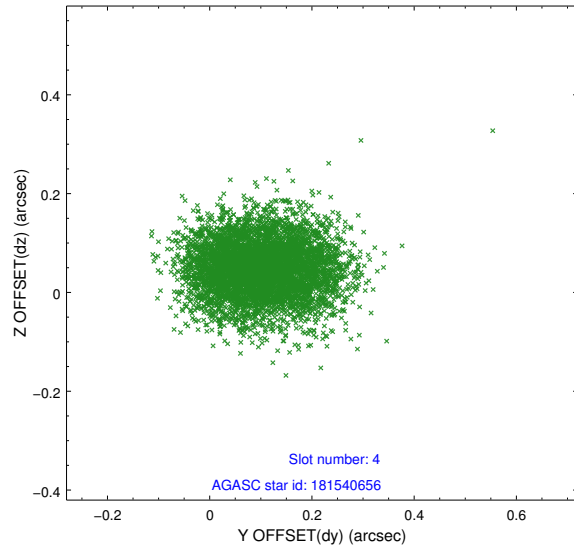
slot	status	id	mag	n_pts	med_dy	med_dz	dr1	dr2	ra	dec	mean_y	mean_z
0	FID	ACIS-S-1	6.98	2473	0.129	-0.071	0.014	0.022	0.000000	0.000000	928.87	-1733.24
1	FID	ACIS-S-2	6.91	2473	-0.053	0.025	0.008	0.012	0.000000	0.000000	-766.93	-1738.23
2	FID	ACIS-S-5	7.02	2473	-0.100	0.050	0.015	0.022	0.000000	0.000000	-1820.74	163.91
3	GUIDE	181534872	8.72	4940	-0.001	-0.199	0.081	0.129	122.048586	20.562714	-889.05	462.19
4	GUIDE	181540656	9.31	4940	0.099	0.047	0.100	0.159	122.329767	20.118766	-2164.21	-889.98
5	GUIDE	182061696	9.76	4937	0.003	-0.068	0.120	0.201	122.373049	21.367790	2197.14	212.24
6	GUIDE	182074520	9.08	4944	-0.053	0.050	0.076	0.123	122.724004	20.779022	488.84	-1508.57
7	GUIDE	182068904	9.89	4934	-0.051	0.174	0.133	0.224	123.024095	20.846441	1003.77	-2410.55

2.4 Star Slots

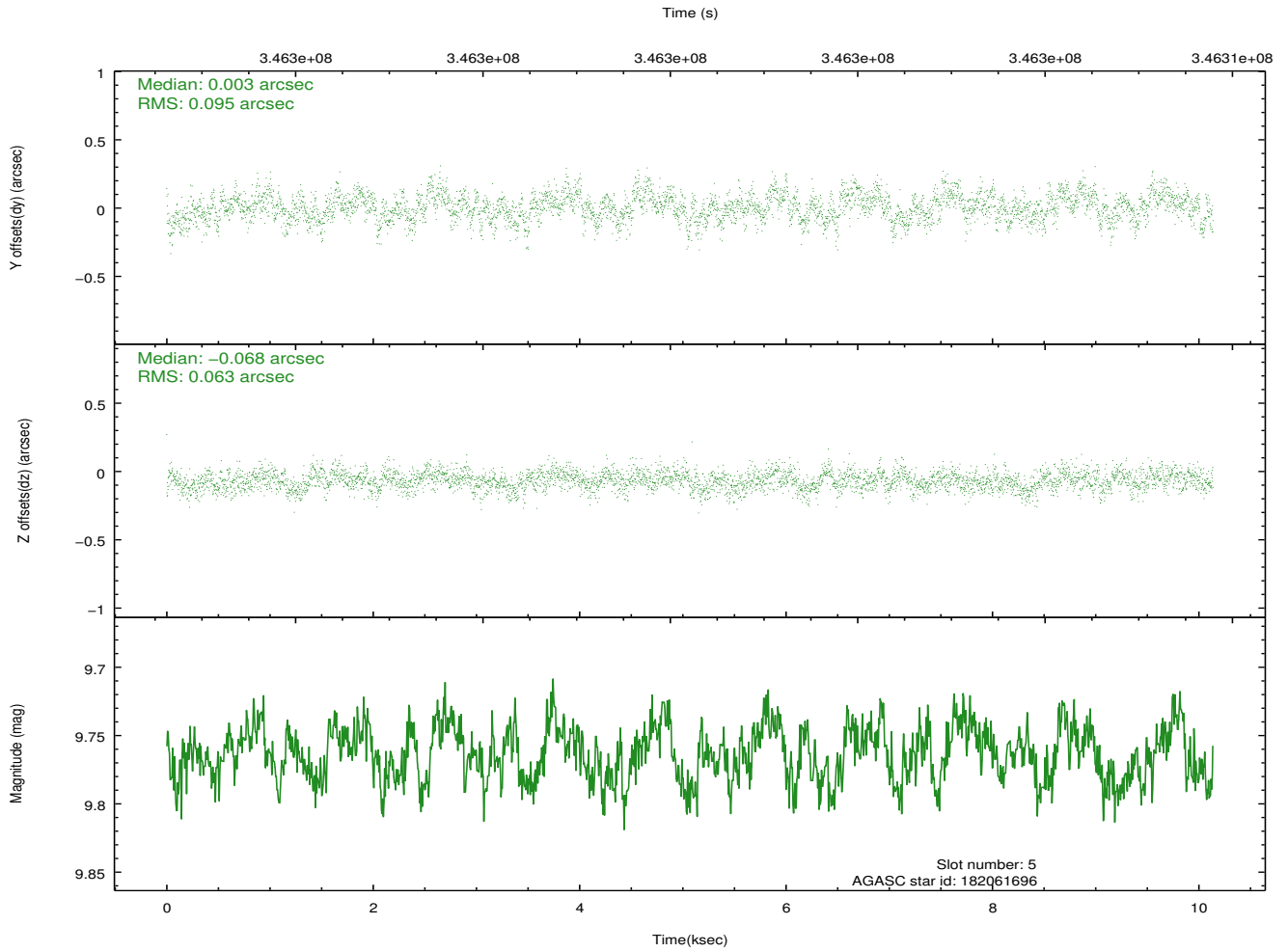
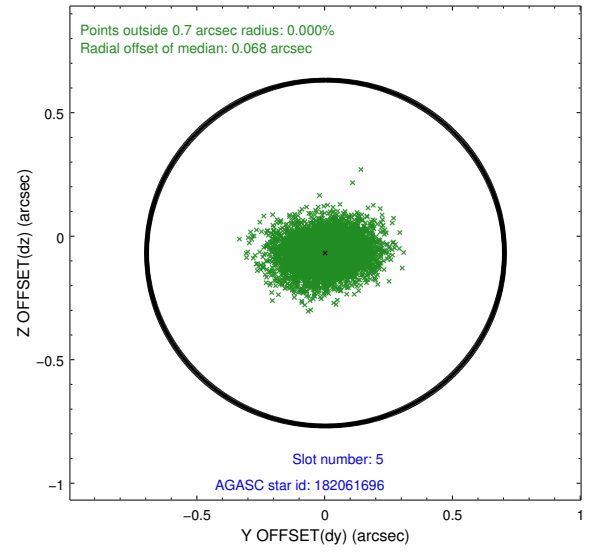
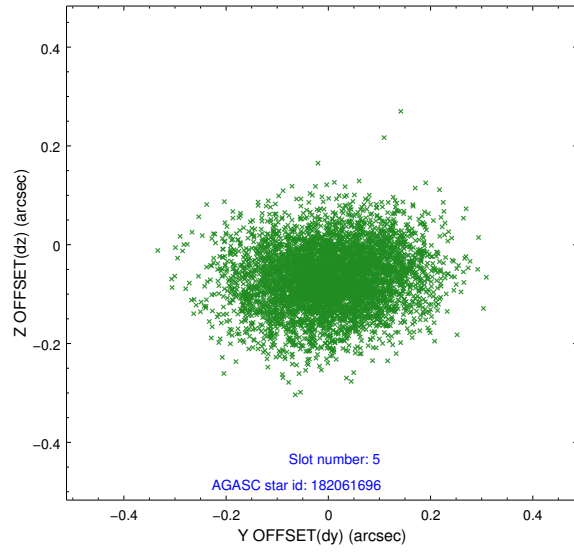
2.4.1 Slot 3



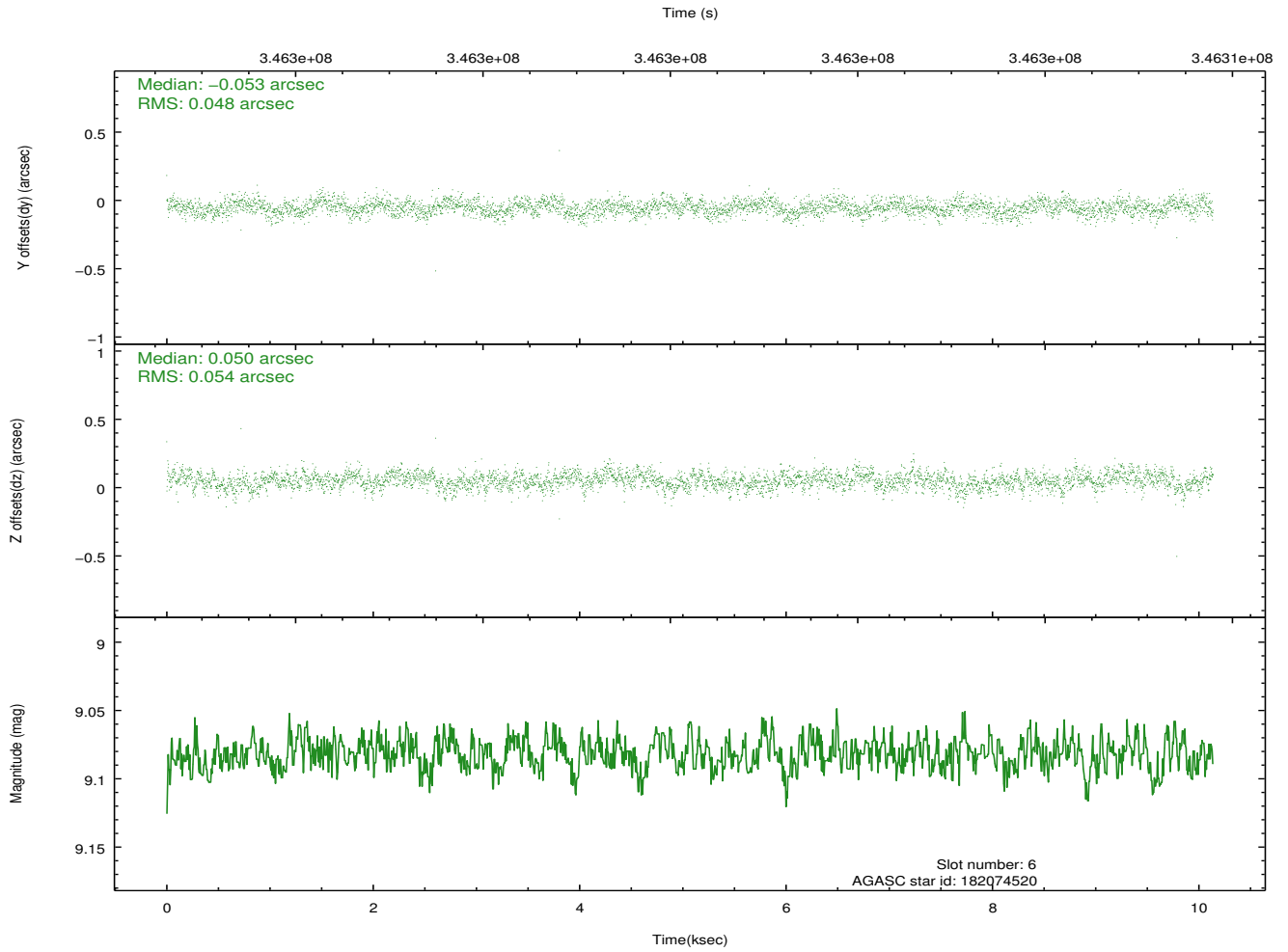
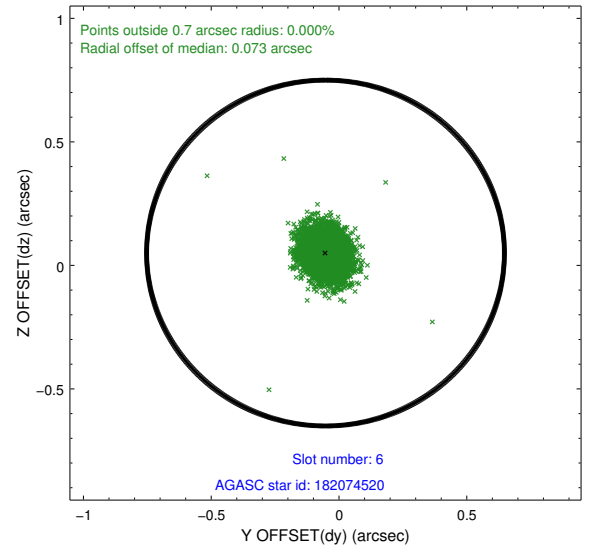
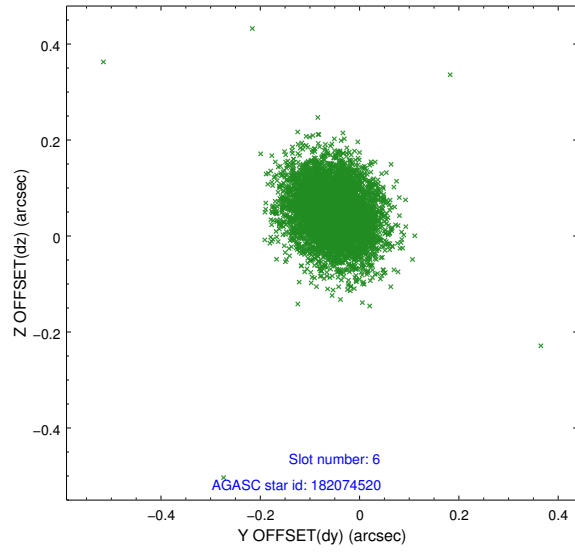
2.4.2 Slot 4



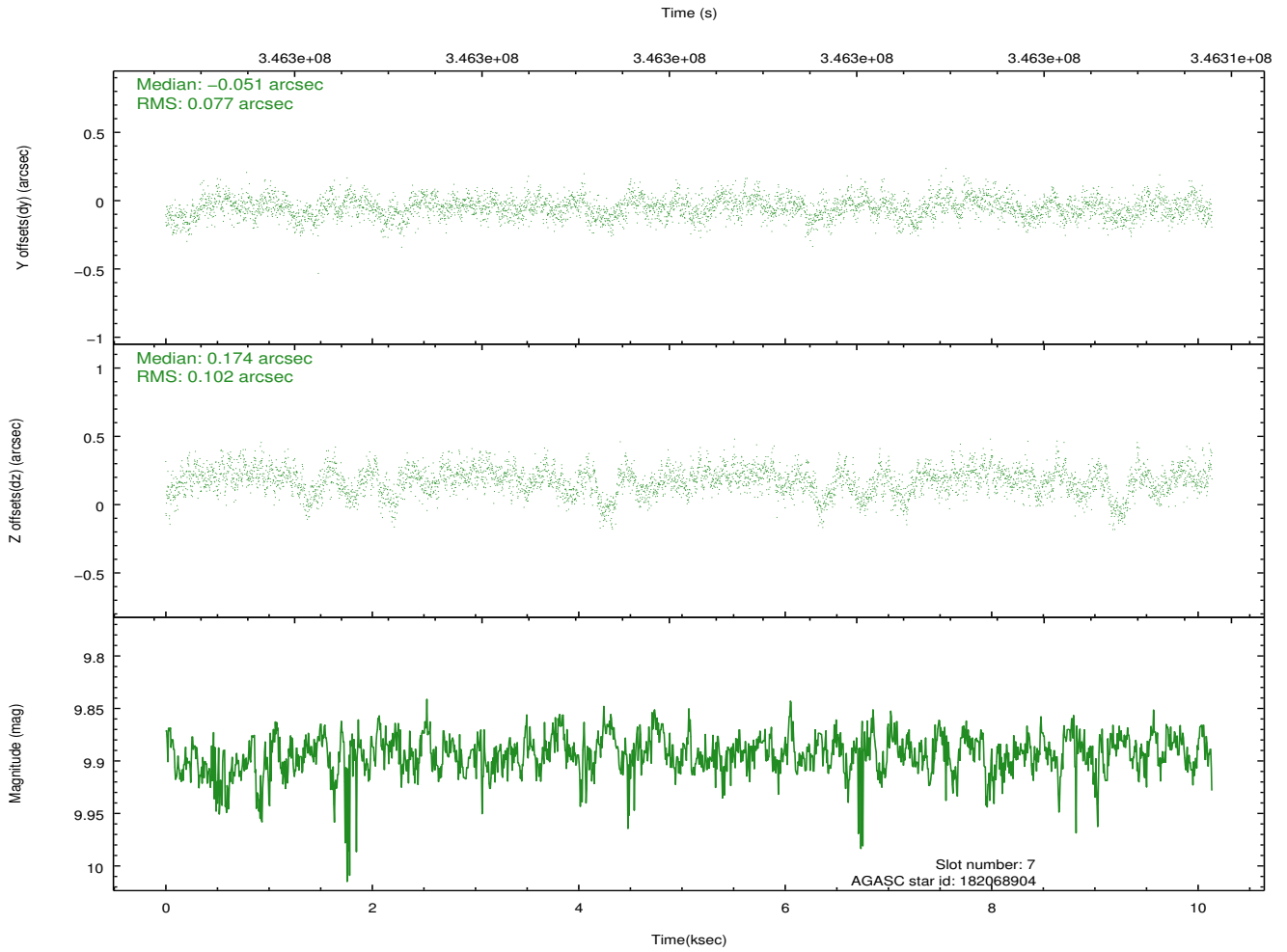
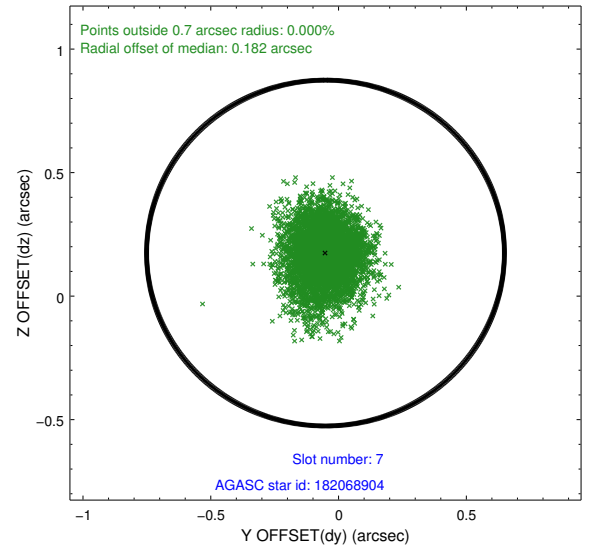
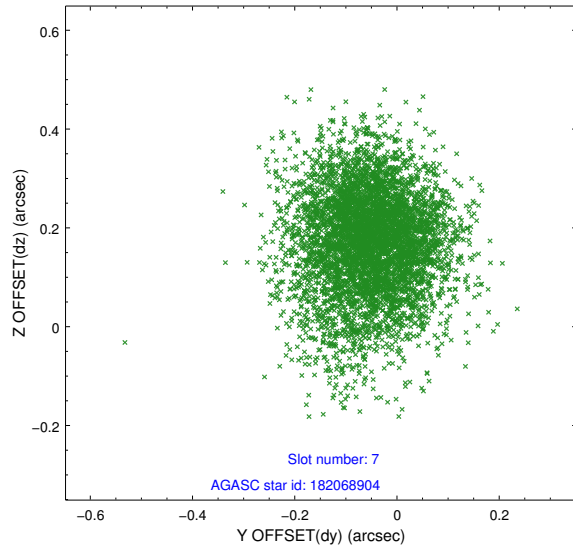
2.4.3 Slot 5



2.4.4 Slot 6

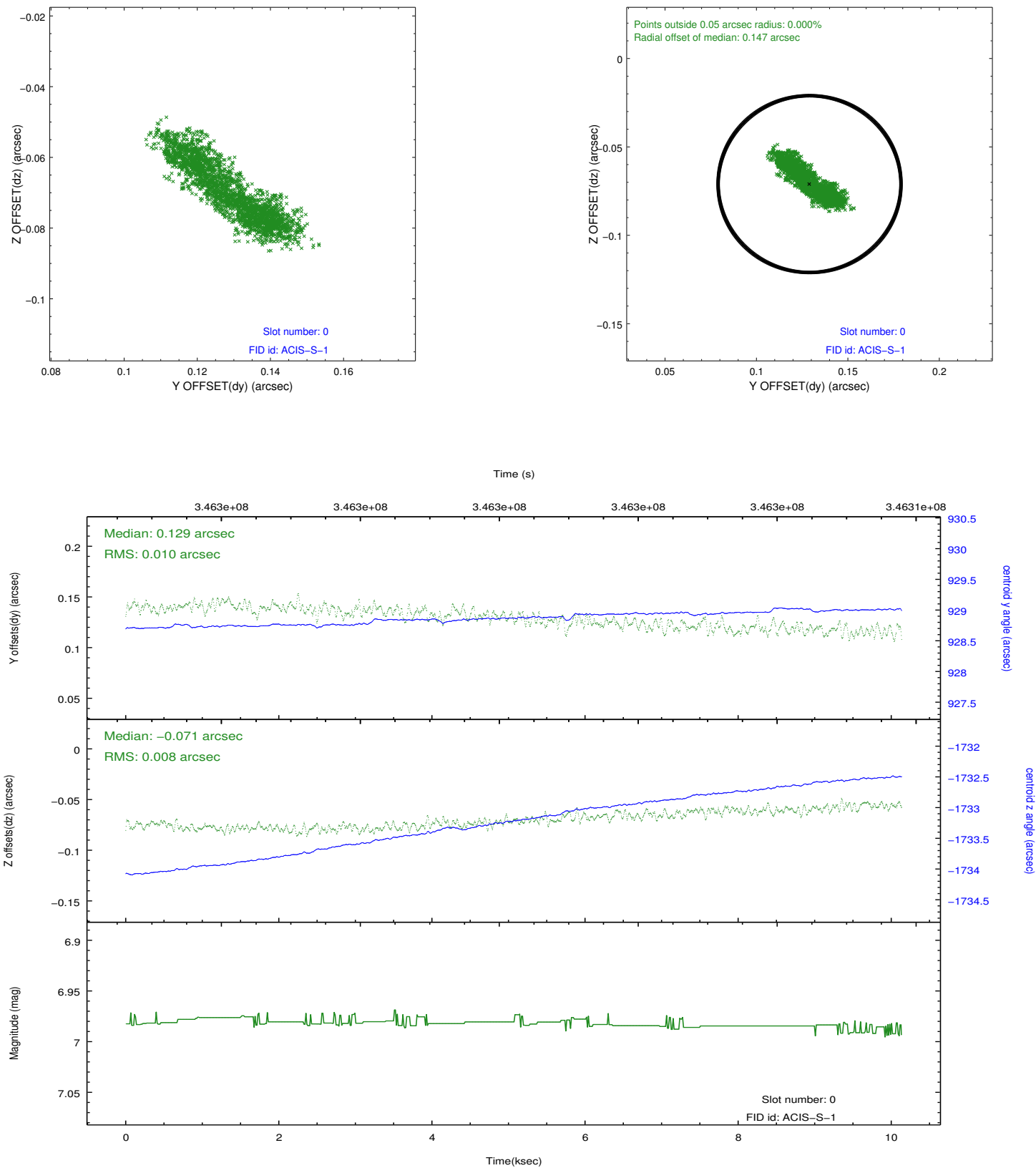


2.4.5 Slot 7

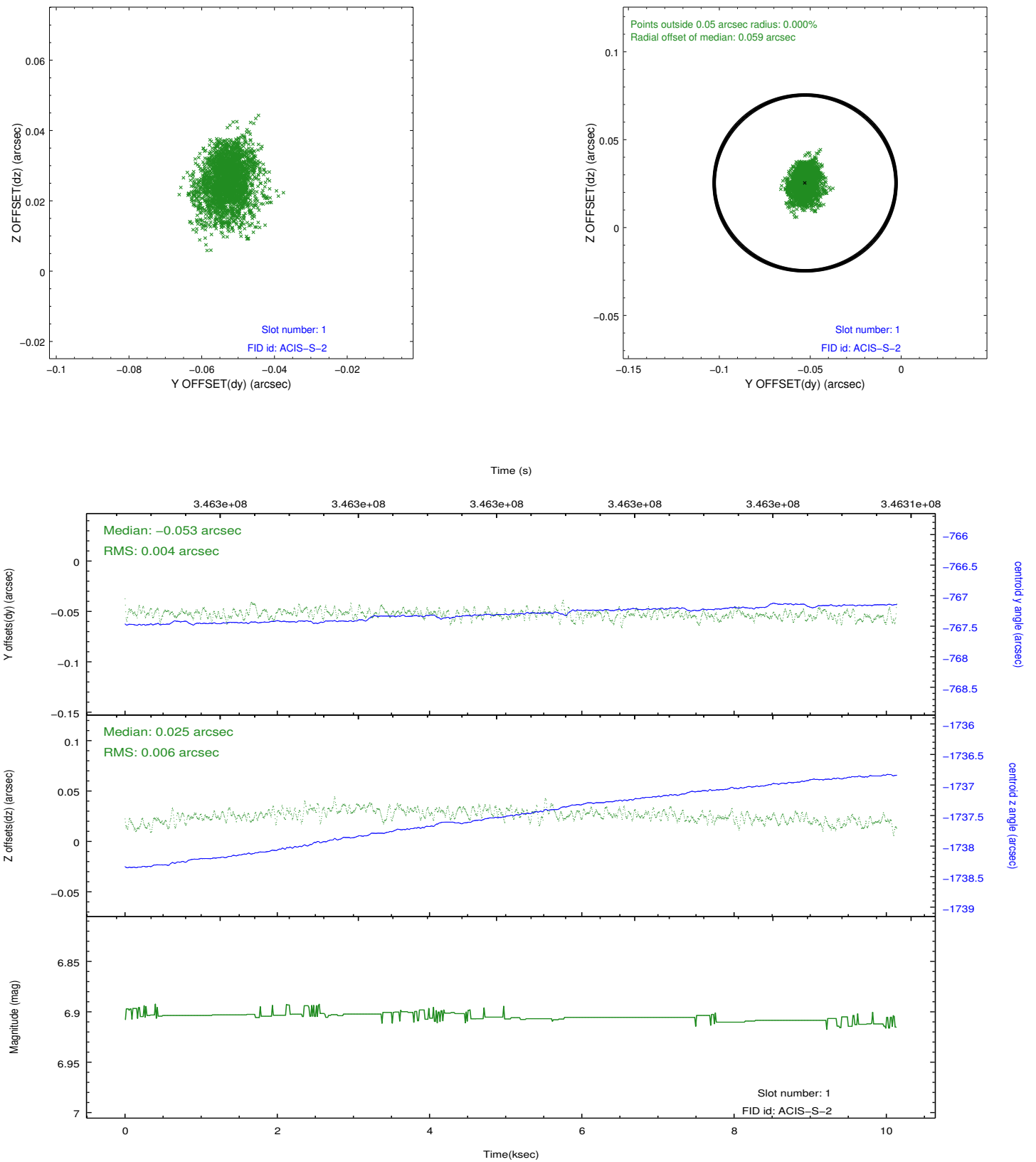


2.5 FID Slots

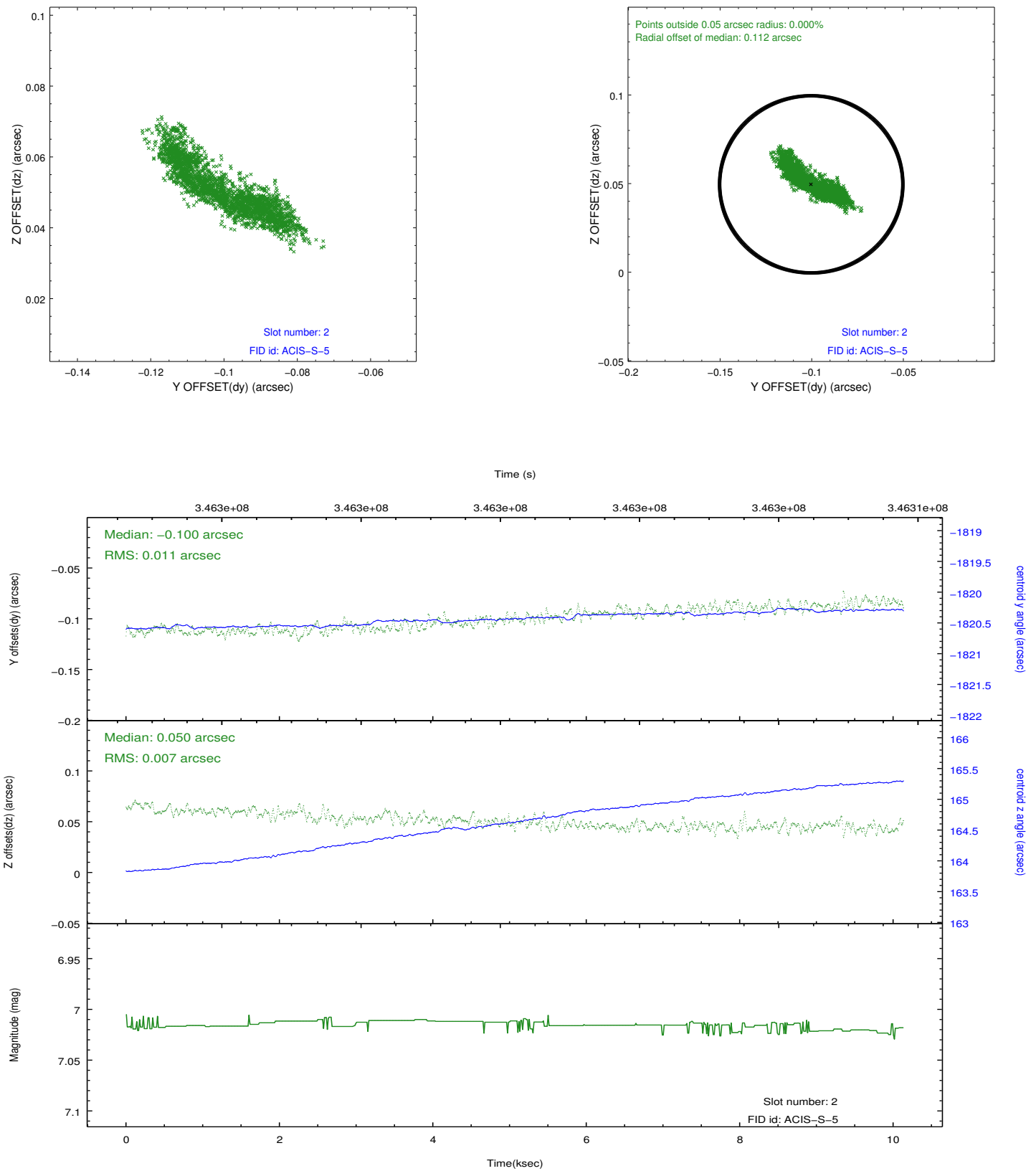
2.5.1 Slot 0



2.5.2 Slot 1



2.5.3 Slot 2



A Summary

A.1 Status

V&V Scientist	Jen Lauer
V&V Date (YYYY-MM-DD)	2012.06.04
V&V Edition	1
V&V Disposition and Status	OK
V&V Charge Time	10.1308

A.2 Comments