

# V&V Reference Report

## L2 ASCDS Version : 8.4.4

Observation 10270 - L2 Version 2  
Chandra X-Ray Center

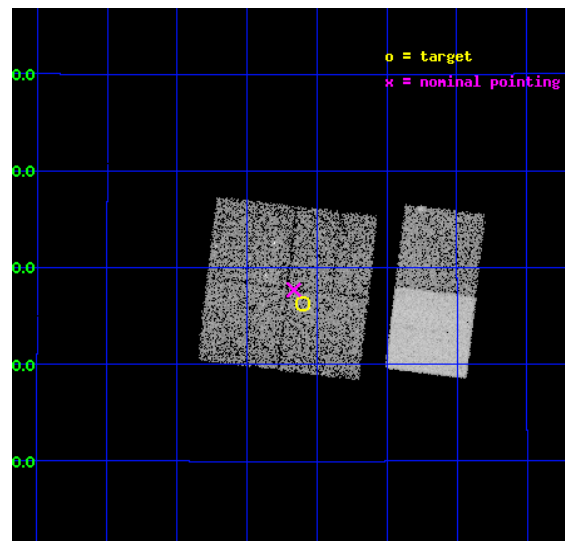
L2 Processing Date : Jun 1 2012

## Contents

<b>1</b>	<b>Front</b>	<b>2</b>
<b>2</b>	<b>OBI</b>	<b>3</b>
2.1	OBI . . . . .	3
2.1.1	Images . . . . .	3
2.1.2	Bias . . . . .	3
2.1.3	Parameters . . . . .	4
2.1.4	Events . . . . .	4
2.2	Compared Parameters . . . . .	5
2.3	Aspect . . . . .	6
2.4	Star Slots . . . . .	9
2.4.1	Slot 3 . . . . .	9
2.4.2	Slot 4 . . . . .	10
2.4.3	Slot 5 . . . . .	11
2.4.4	Slot 6 . . . . .	12
2.4.5	Slot 7 . . . . .	13
2.5	FID Slots . . . . .	14
2.5.1	Slot 0 . . . . .	14
2.5.2	Slot 1 . . . . .	15
2.5.3	Slot 2 . . . . .	16
<b>A</b>	<b>Summary</b>	<b>17</b>
A.1	Status . . . . .	17
A.2	Comments . . . . .	17

# 1 Front

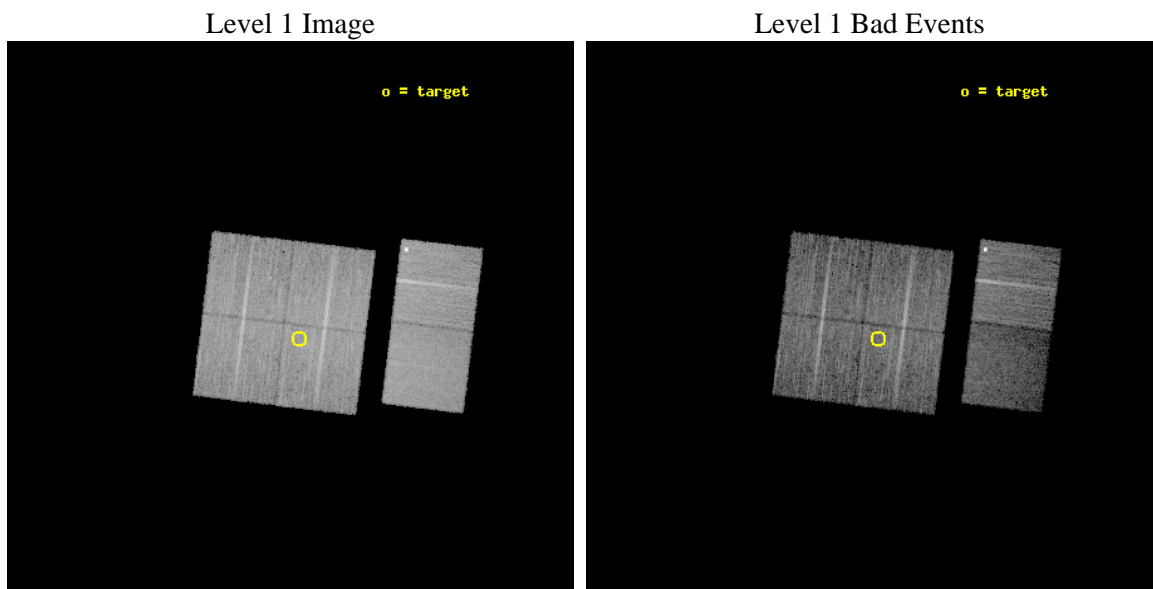
seq_num	701813	Sequence number
obs_id	10270	Observation id
title	Using Chandra and HST to Construct the First Detailed Timeline of Early-Type Galaxy Evolution	Proposal title
observer	Prof. Ann Zabludoff	Principal investigator
object	SDSSJ123936.05+122620.0	Source name
dtcycle	0	&#160
cycle	P	events from which exps? Prim/Second/Both
ra_targ	189.9	Observer's specified target RA [deg]
dec_targ	12.438889	Observer's specified target Dec [deg]
ra_nom	189.91615211199	Nominal RA [deg]
dec_nom	12.461874749351	Nominal Dec [deg]
roll_nom	96.900578403149	Nominal Roll [deg]
revision	2	Processing version of data
ontime	10043.320344865	Sum of GTIs [s]
livetime	9916.1457752972	Livetime [s]
ontime0	10043.197224855	Sum of GTIs [s]
ontime1	10039.997244537	Sum of GTIs [s]
ontime2	10040.038294494	Sum of GTIs [s]
ontime3	10043.320344865	Sum of GTIs [s]
ontime6	10043.402424872	Sum of GTIs [s]
ontime7	10043.361384869	Sum of GTIs [s]
l2events	70546	Number of level 2 events



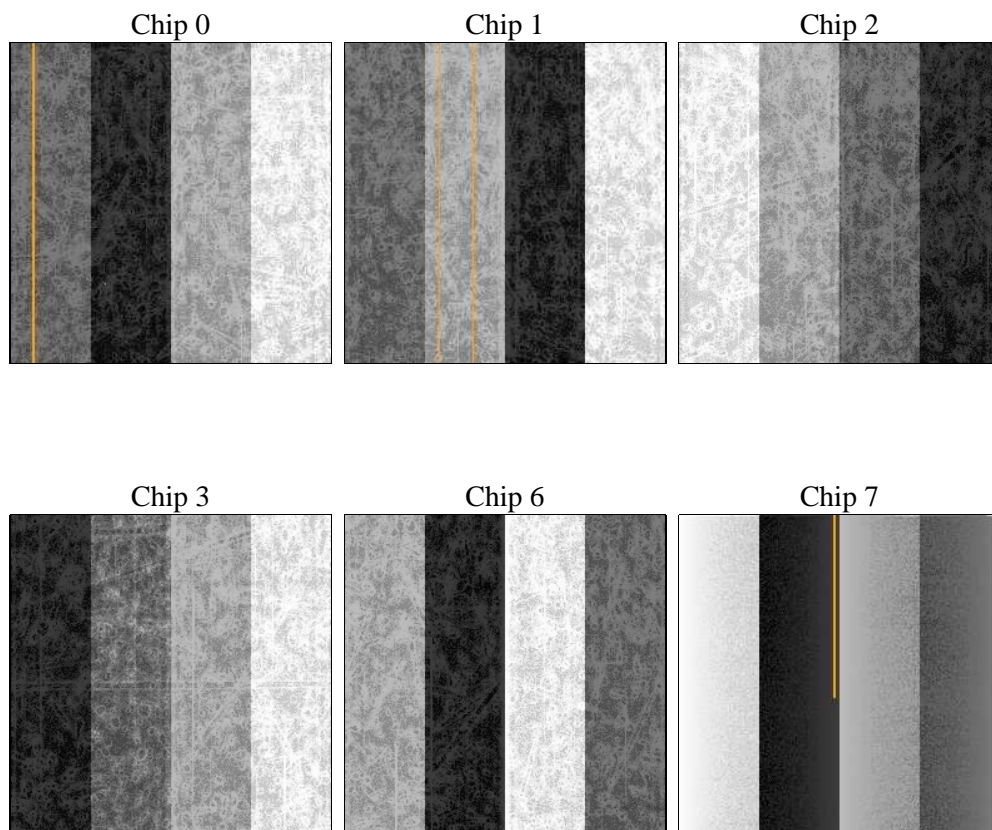
## 2 OBI

### 2.1 OBI

#### 2.1.1 Images



#### 2.1.2 Bias



### 2.1.3 Parameters

obi_num	0	Obi number	sched_exp_time	10000.000000	[s] Scheduled observation exposure time
ascdsver	8.4.4	Processing system revision	ontime	10043.320344865	Sum of GTIs [s]
caldsver	4.4.9	&#160	ontime0	10043.197224855	Sum of GTIs [s]
date	2012-06-01T23:43:51	Date and time of file creation	ontime1	10039.997244537	Sum of GTIs [s]
revision	2	Processing version of data	ontime2	10040.038294494	Sum of GTIs [s]
			ontime3	10043.320344865	Sum of GTIs [s]
			ontime6	10043.402424872	Sum of GTIs [s]
			ontime7	10043.361384869	Sum of GTIs [s]
			l1events	466646	Number of level 1 events

### 2.1.4 Events

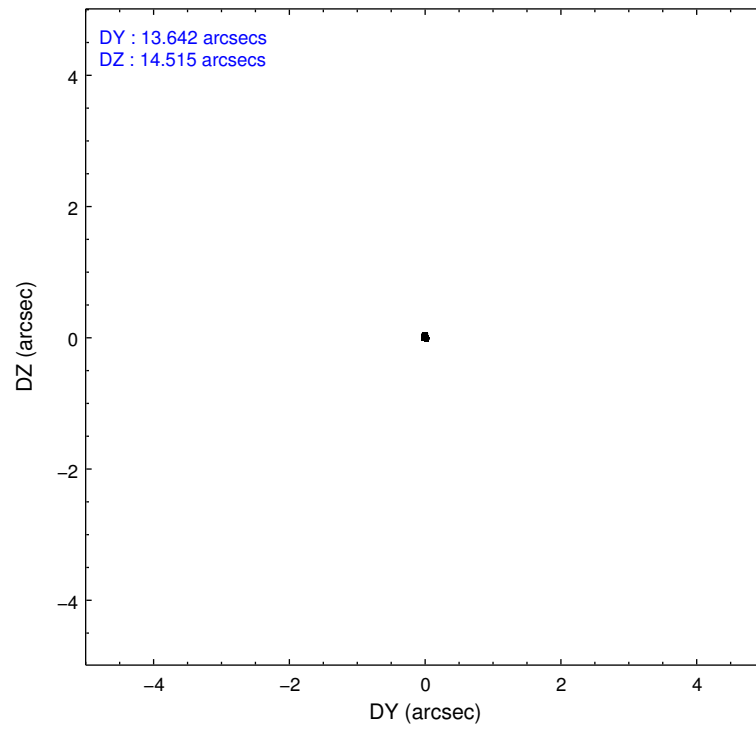
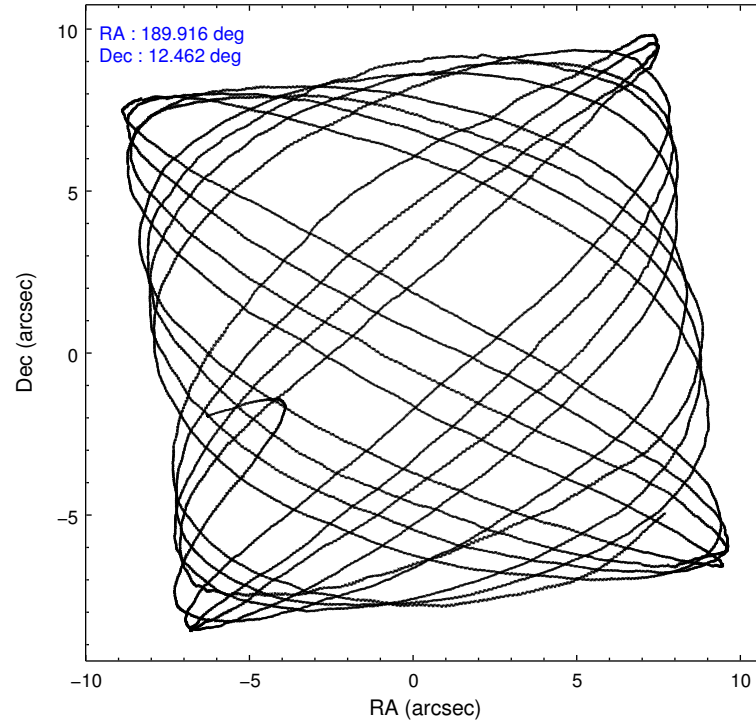
	ccd 0	ccd 1	ccd 2	ccd 3	ccd 6	ccd 7		ccd 0	ccd 1	ccd 2	ccd 3	ccd 6	ccd 7
level 1 events	72890	73075	81774	77087	84463	77357	grade 0 events	3236	2966	2944	2973	3140	3825
rejected events	64482	64779	73905	69528	75954	39198		4%	4%	3%	3%	3%	4%
rejected %	88%	88%	90%	90%	89%	50%	grade 1 events	39	40	55	33	2978	119
								0%	0%	0%	0%	3%	0%
							grade 2 events	1966	1862	1893	1604	1870	8130
								2%	2%	2%	2%	2%	10%
							grade 3 events	863	919	815	800	870	3486
								1%	1%	0%	1%	1%	4%
							grade 4 events	852	892	857	795	887	3514
								1%	1%	1%	1%	1%	4%
							grade 5 events	2396	2567	2248	2804	2836	8250
								3%	3%	2%	3%	3%	10%
							grade 6 events	1491	1661	1362	1389	1748	19216
								2%	2%	1%	1%	2%	24%
							grade 7 events	62047	62168	71600	66689	70134	30817
								85%	85%	87%	86%	83%	39%

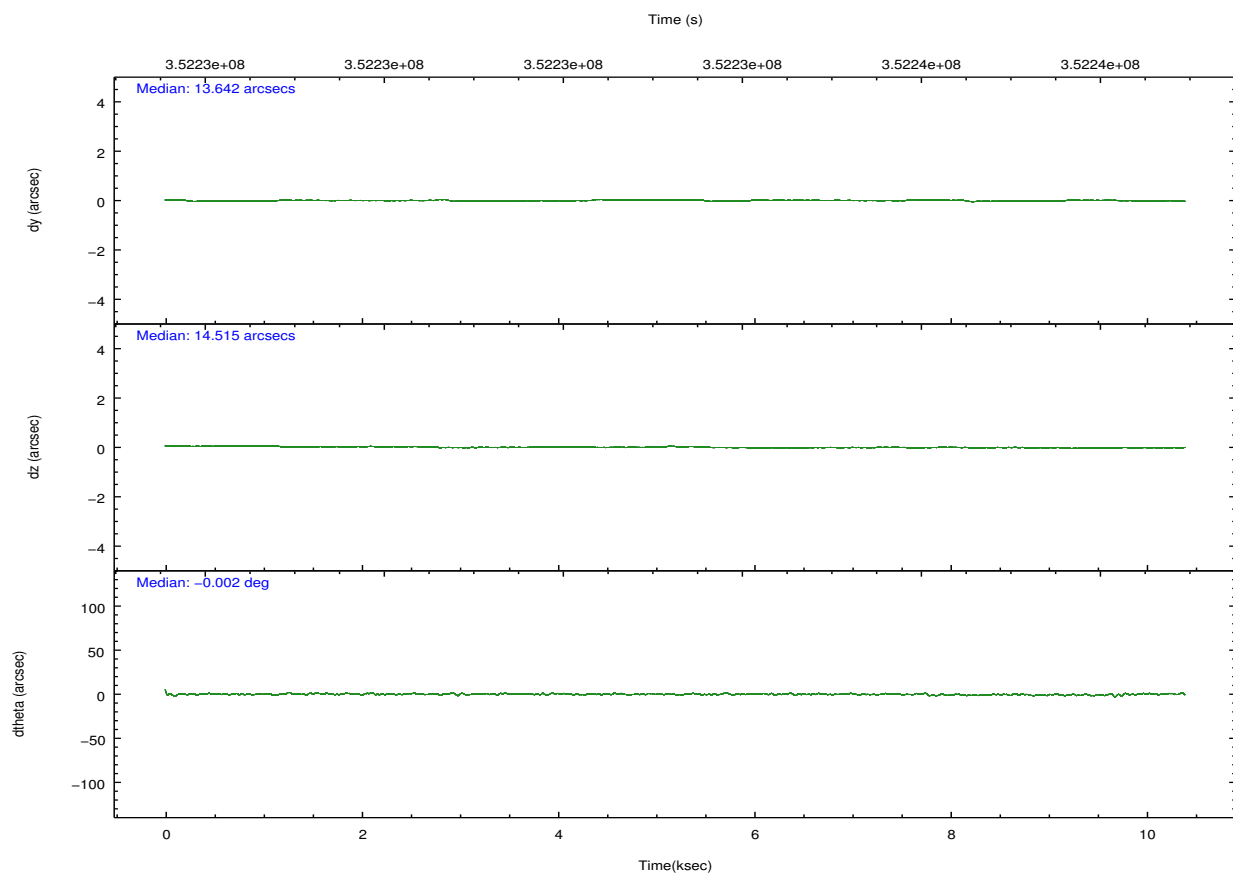
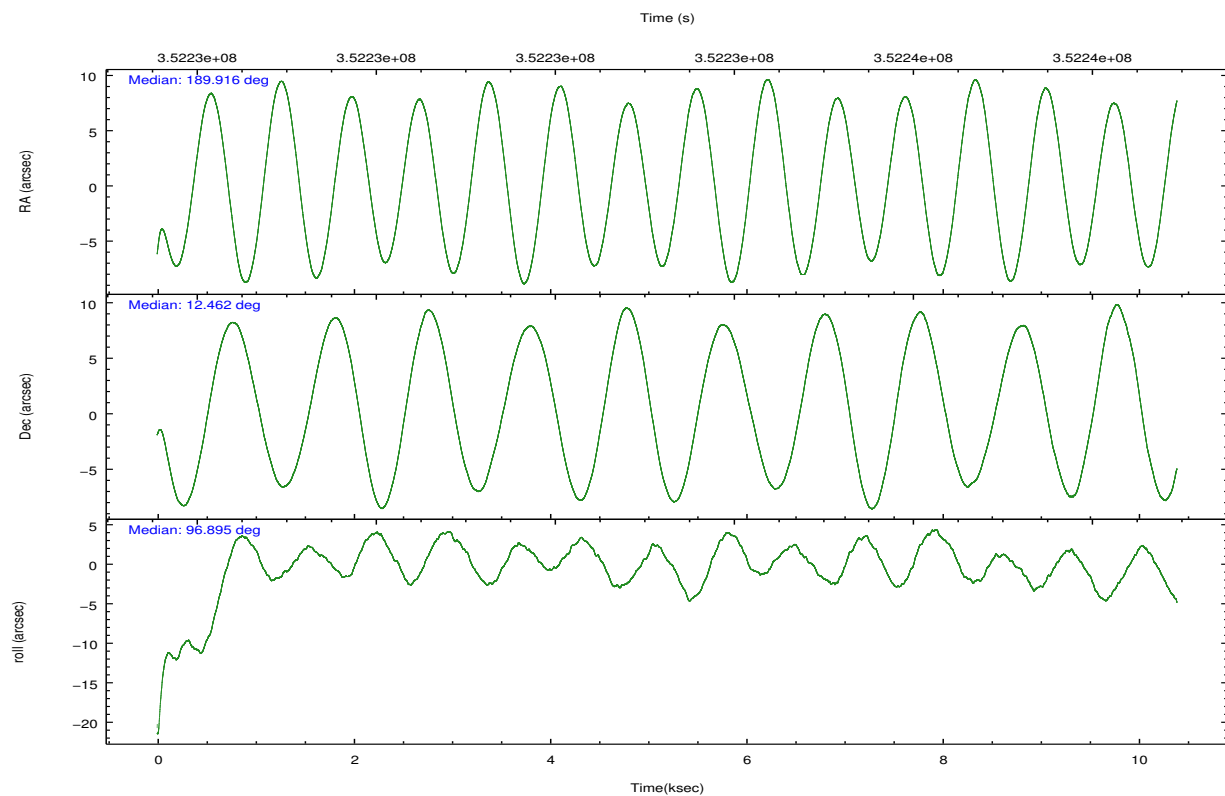


## 2.2 Compared Parameters

Parameter	Planned	Actual	Parameter	Planned	Actual
Instrument	ACIS	ACIS	Obspar format version number	7	7
Detector	ACIS-012367	ACIS-012367	Obspar file type	PREDICTED	ACTUAL
Grating	NONE	NONE	Obspar update status	NONE	UPDATED
Data mode	FAINT	FAINT	CCD I0 on	Y	Y
Observation mode	POINTING	POINTING	CCD I1 on	Y	Y
[deg] Pointing RA	189.933201	189.9161521119887	CCD I2 on	Y	Y
[deg] Pointing Dec	12.440005	12.46187474935149	CCD I3 on	Y	Y
[deg] Pointing Roll	96.688223	96.90057840314888	CCD S0 on	N	N
[mm] SIM focus pos	-0.782348	-0.7809083437167272	CCD S1 on	N	N
[mm] SIM defocus	0	0.001439871863259334	CCD S2 on	O1	Y
[mm] SIM translation stage pos	-233.592463	-233.5874344608287	CCD S3 on	O2	Y
[mm] SIM translation stage offset	0	-0.005018542100998502	CCD S4 on	N	N
[s] Observation start time (MET)	352228445.184000	352227334.28646	CCD S5 on	N	N
Observation start date	2009-02-28T17:12:59	2009-02-28T16:55:34	Number of optional ACIS chips dropped	0	0
[s] Observation end time (MET)	352238445.184000	352238685.13702	On-chip summing requested	N	N
Observation end date	2009-02-28T19:59:39	2009-02-28T20:04:45	Subarray requested	NONE	NONE
Read mode	TIMED	TIMED	Alternating exposures requested	N	N
			[s] Primary exposure time	0.000000	3.2

## 2.3 Aspect



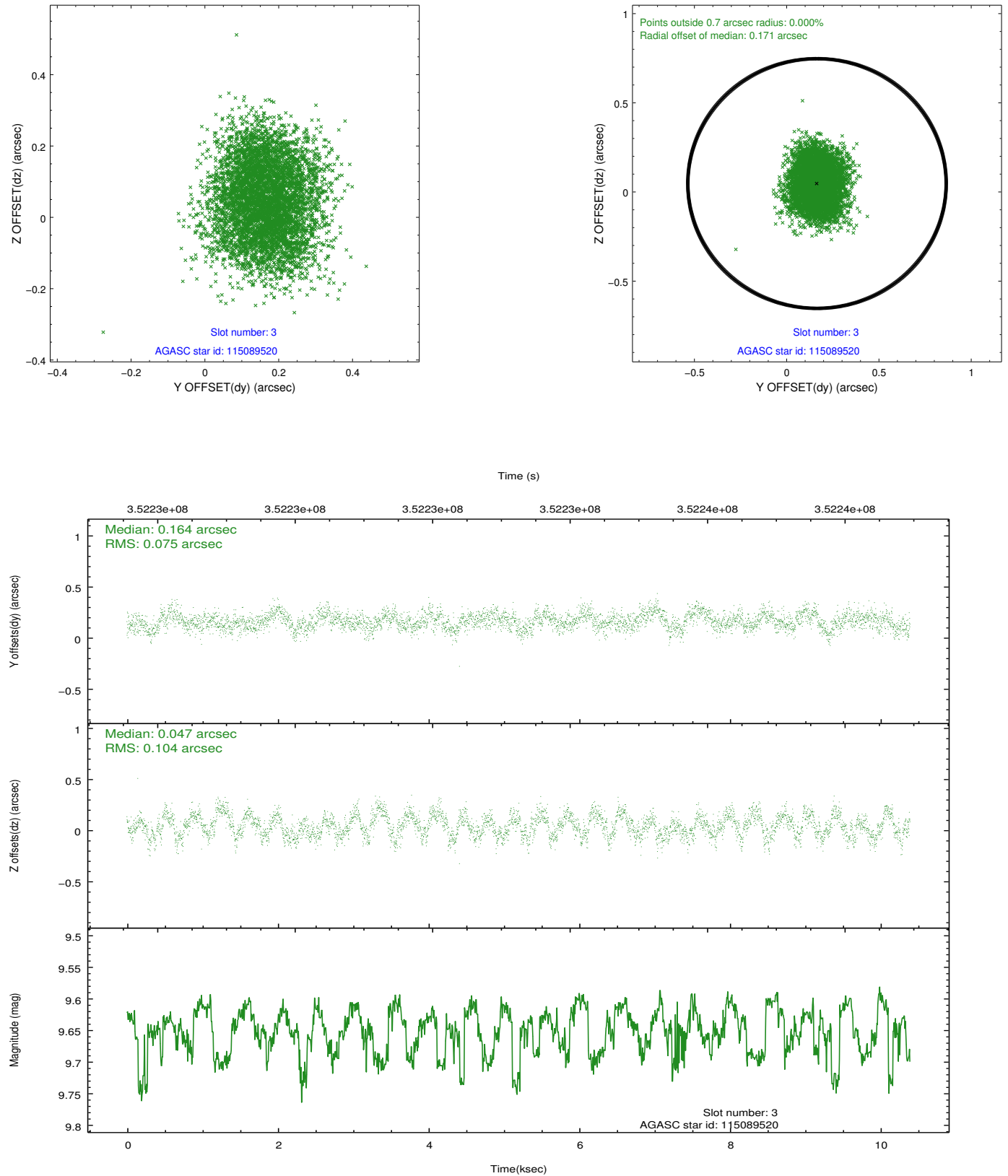


### Slot Statistics

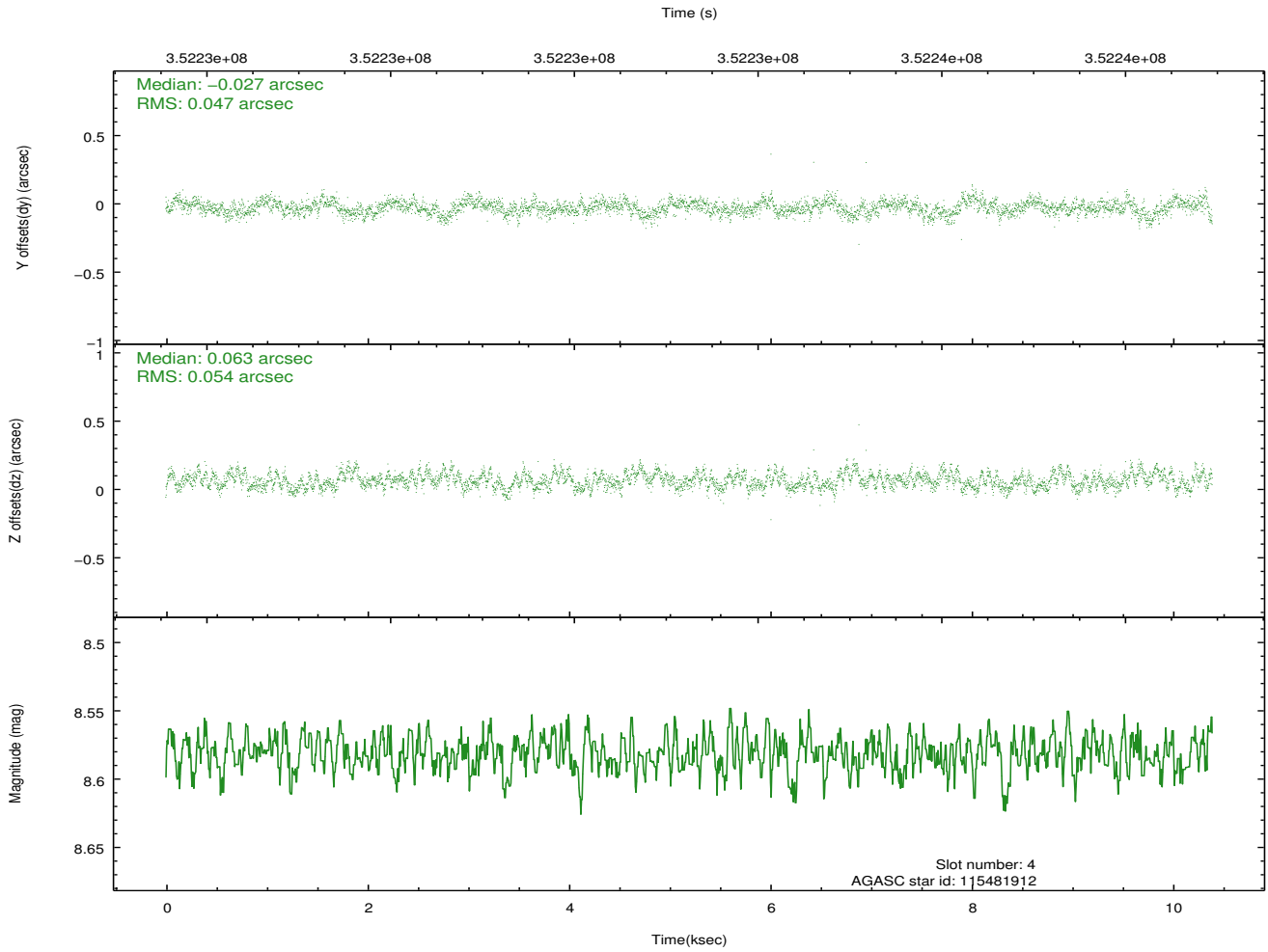
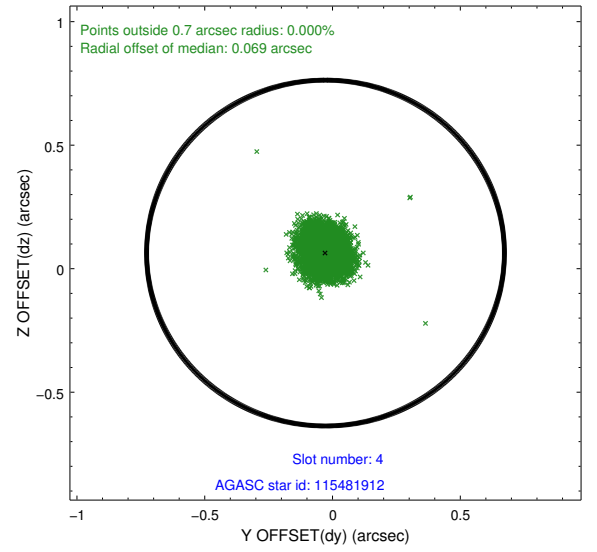
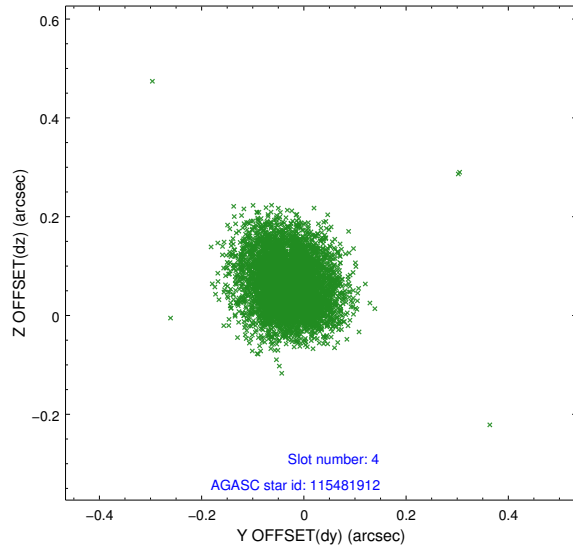
slot	status	id	mag	n_pts	med_dy	med_dz	dr1	dr2	ra	dec	mean_y	mean_z
0	FID	ACIS-I-2	7.01	2535	-0.076	-0.048	0.018	0.030	0.000000	0.000000	-768.39	-844.52
1	FID	ACIS-I-4	7.02	2535	0.206	0.060	0.010	0.017	0.000000	0.000000	2145.72	1061.51
2	FID	ACIS-I-5	7.10	2535	-0.231	0.058	0.012	0.020	0.000000	0.000000	-1821.73	1059.93
3	GUIDE	115089520	9.65	5033	0.164	0.047	0.139	0.215	189.892491	12.217562	-778.13	235.45
4	GUIDE	115481912	8.58	5068	-0.027	0.063	0.075	0.122	189.408526	12.669552	1037.12	1733.88
5	GUIDE	115482240	7.32	5071	-0.139	0.164	0.059	0.093	190.182782	12.715426	883.47	-985.41
6	GUIDE	115482272	8.15	5069	-0.098	-0.057	0.067	0.116	189.342268	12.983616	2187.71	1830.72
7	GUIDE	115086528	8.96	5066	0.103	-0.217	0.089	0.138	189.286111	12.182164	-653.57	2369.18

## 2.4 Star Slots

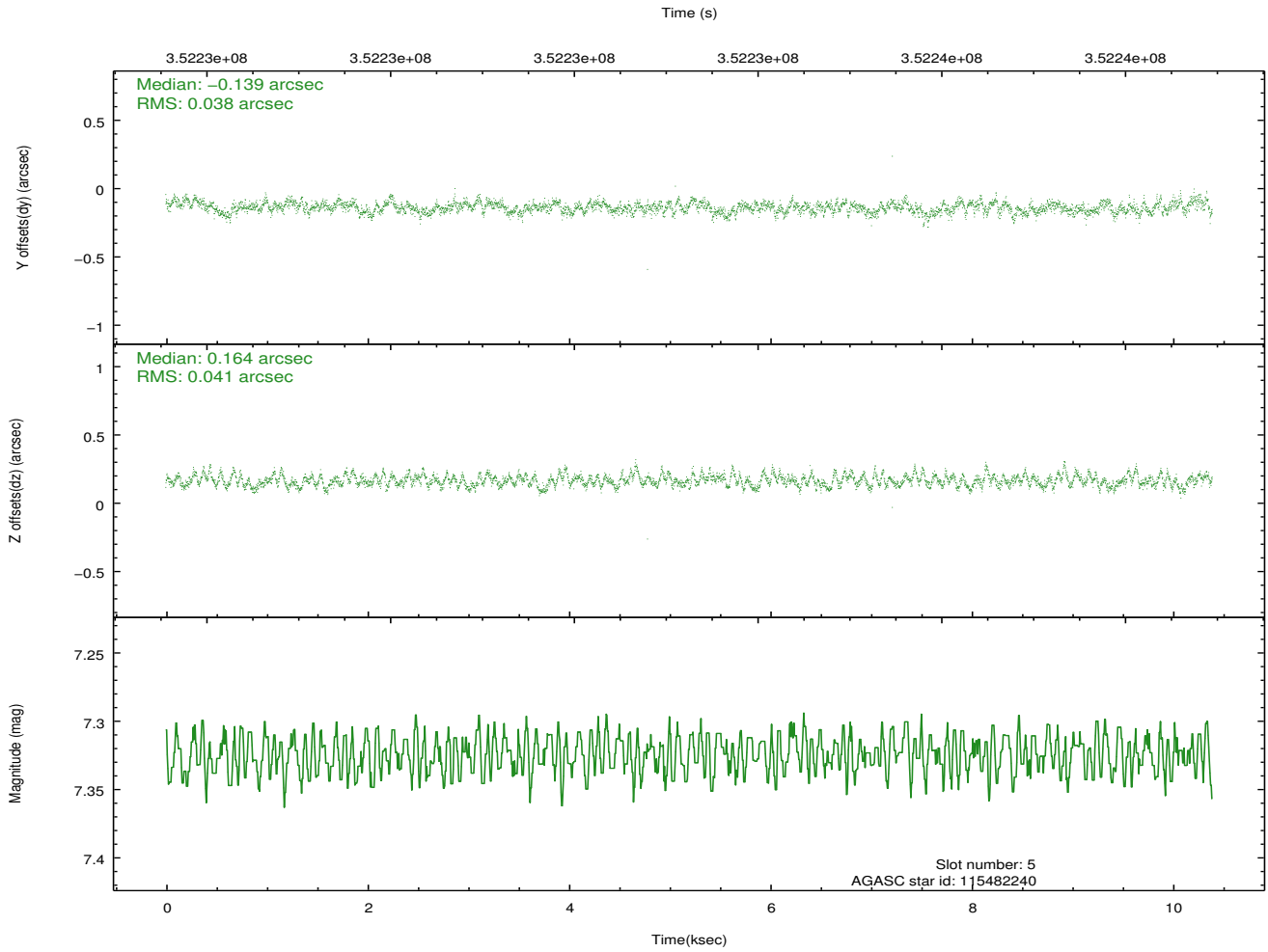
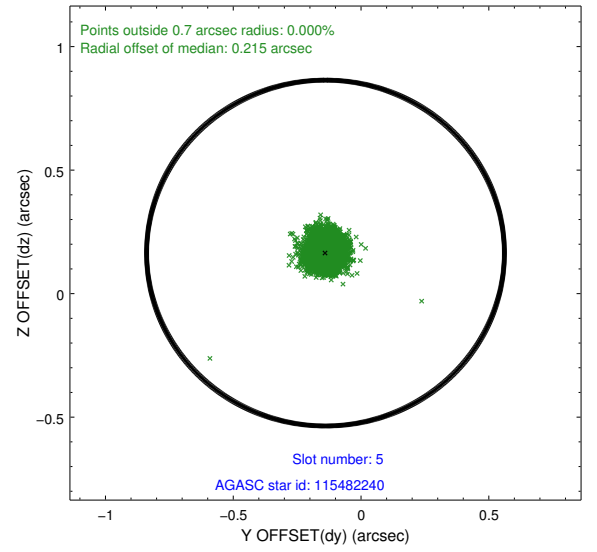
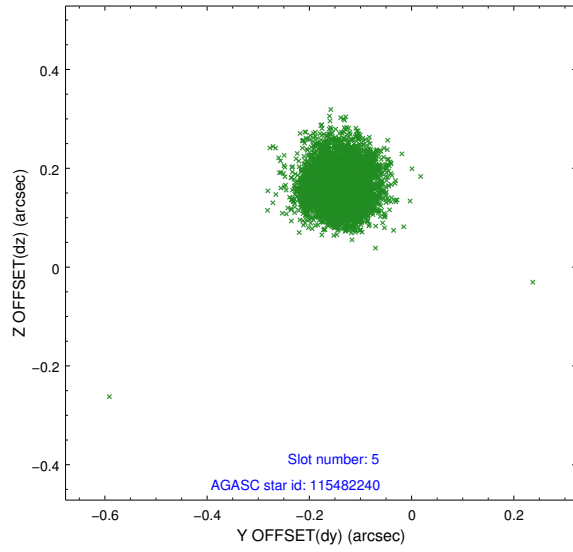
### 2.4.1 Slot 3



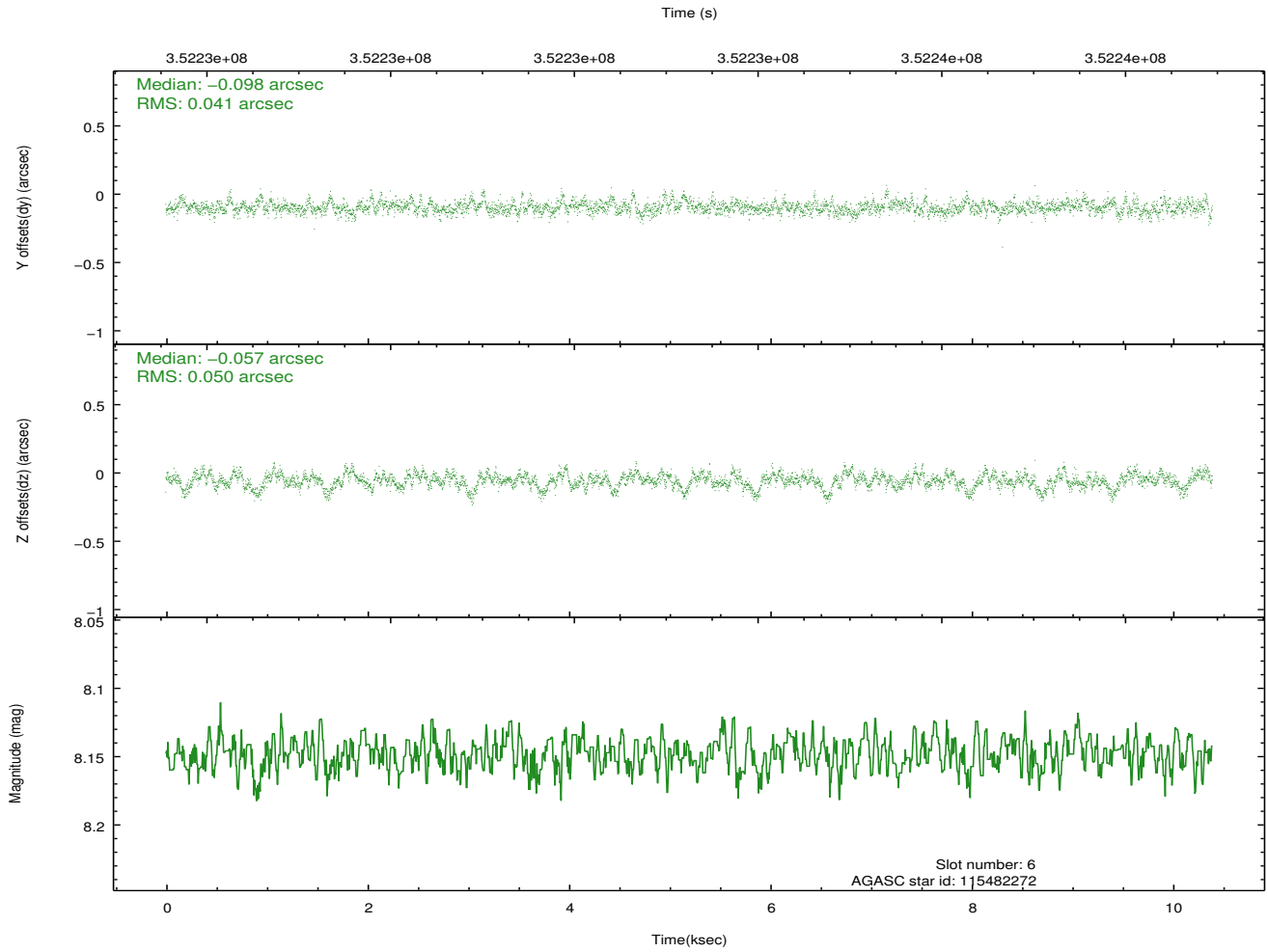
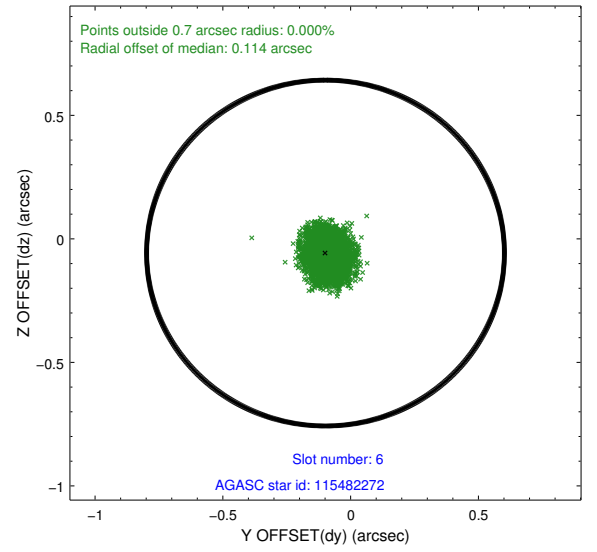
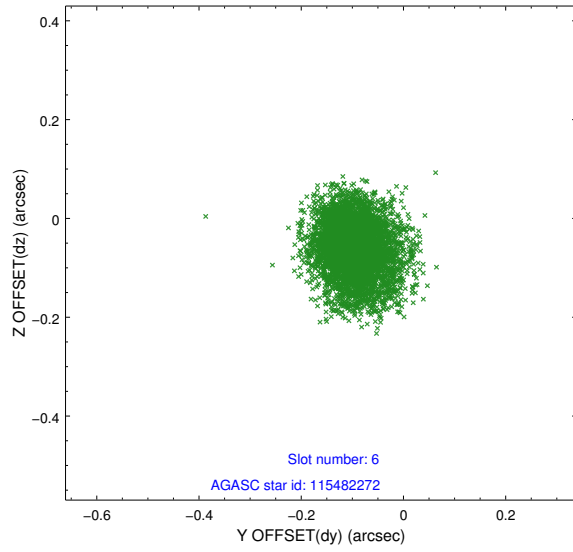
## 2.4.2 Slot 4



### 2.4.3 Slot 5

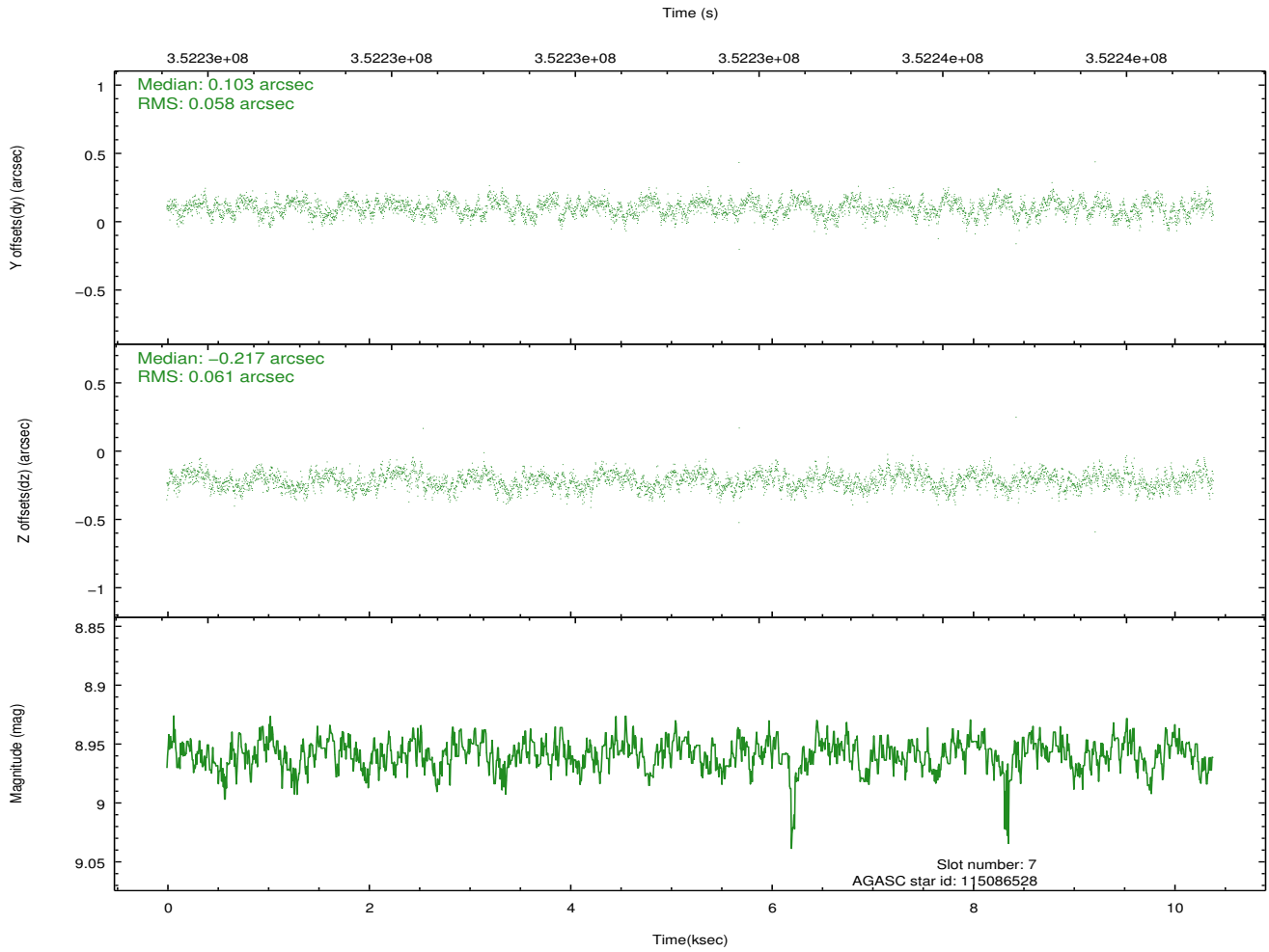
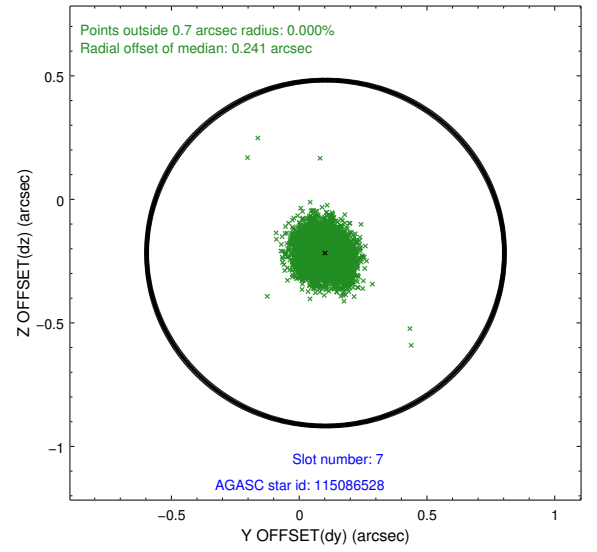
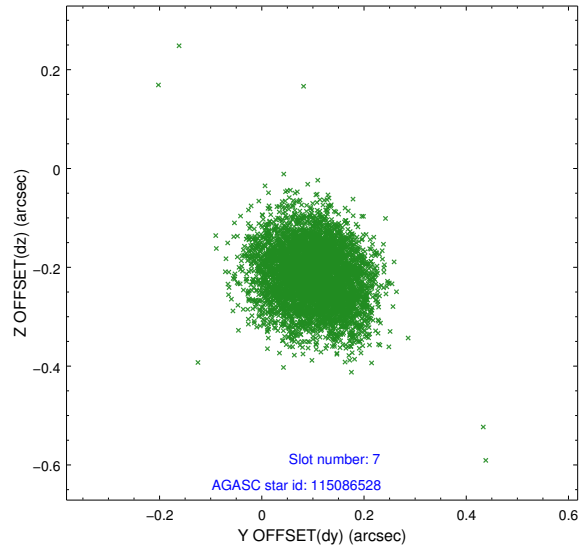


## 2.4.4 Slot 6



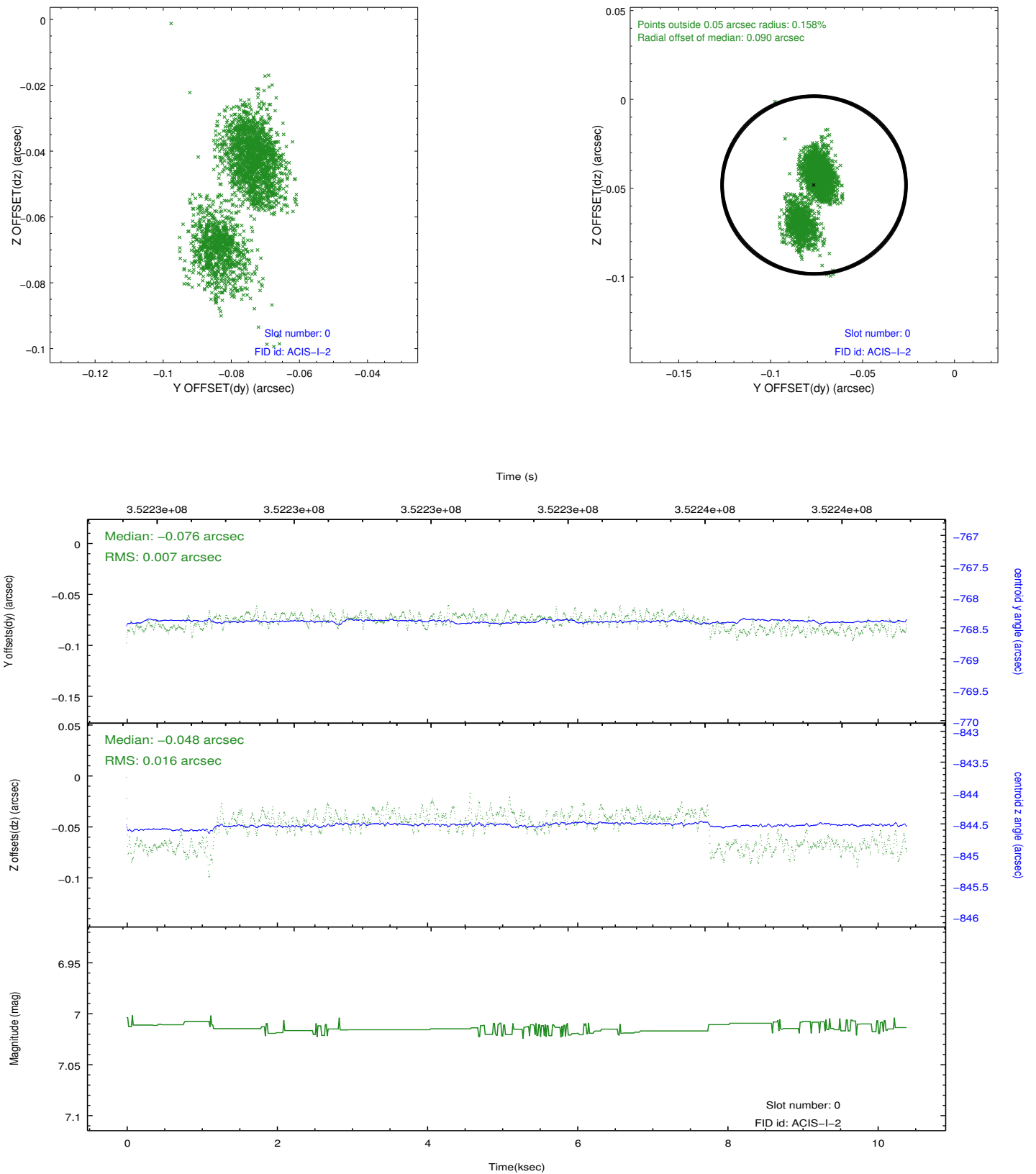


## 2.4.5 Slot 7

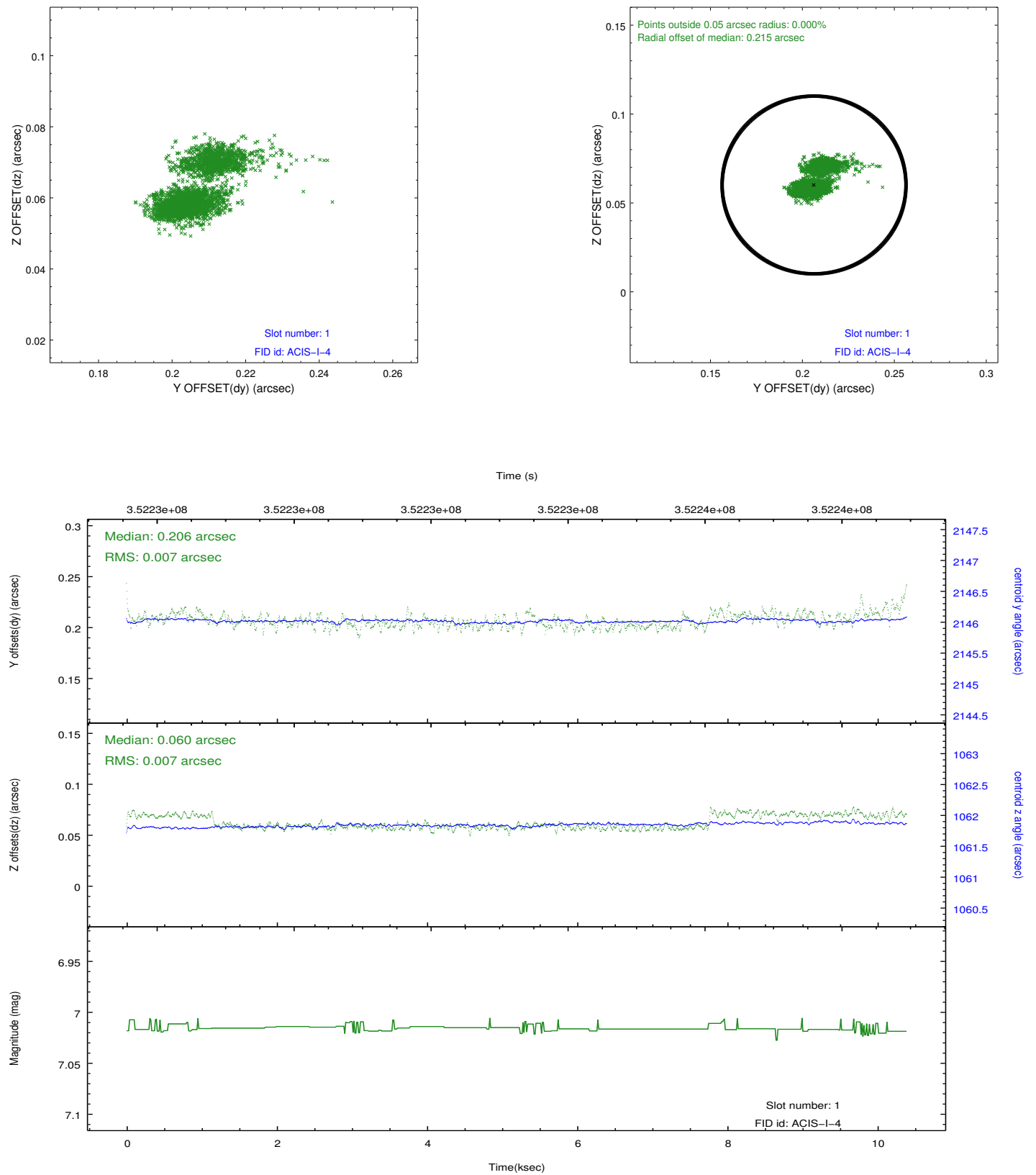


## 2.5 FID Slots

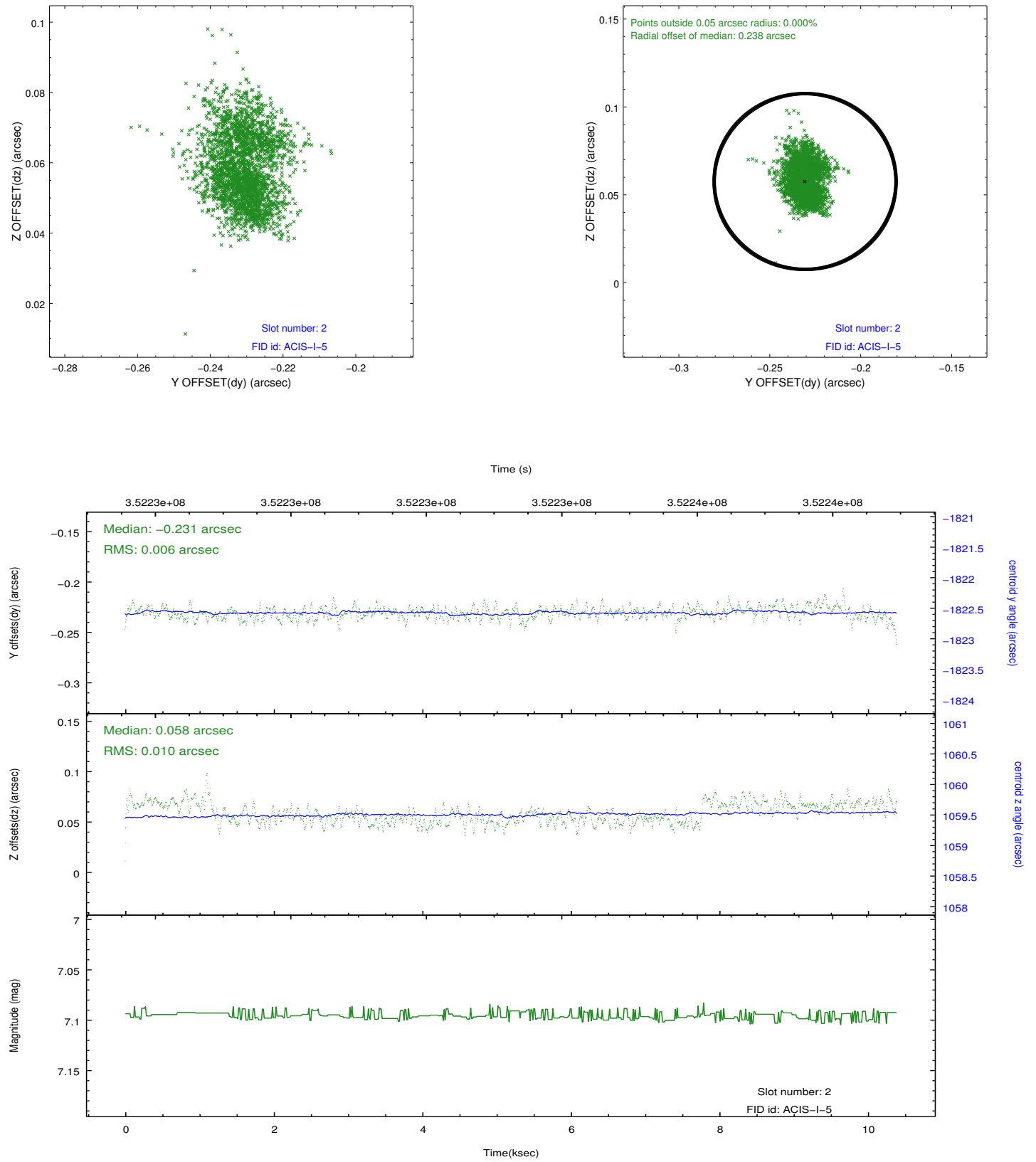
### 2.5.1 Slot 0



## 2.5.2 Slot 1



### 2.5.3 Slot 2



# A Summary

## A.1 Status

V&V Scientist	Beth Sundheim
V&V Date (YYYY-MM-DD)	2012.06.07
V&V Edition	1
V&V Disposition and Status	OK
V&V Charge Time	10.0447999

## A.2 Comments

Joint proposal with HST.