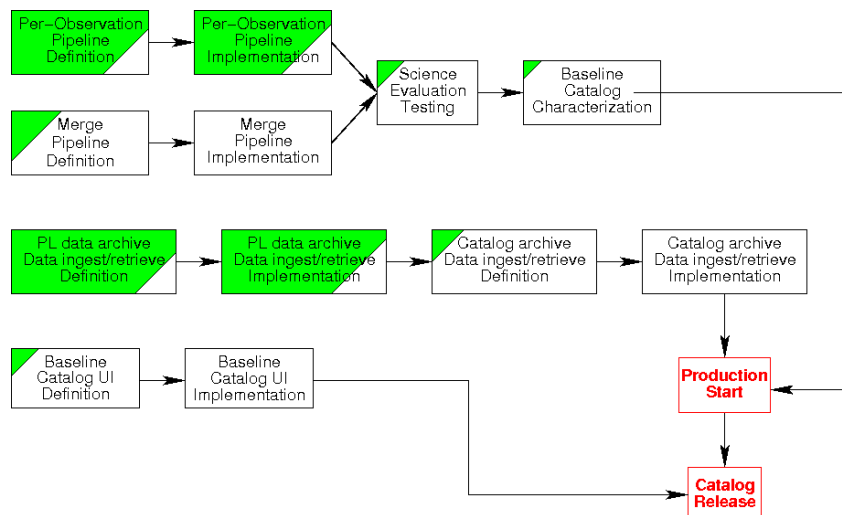


Chandra Source Catalog Review

Schedule

Ian Evans
Chandra X-ray Center
February 9, 2006

Project Milestones



Projected Schedule Timeline I

1st Quarter 2006

- Complete per-observation pipeline definition
- Complete pipeline data archive ingest/retrieve definition
- Complete merge pipeline definition
- Complete per-observation pipeline implementation
- Start detailed per-observation pipeline science evaluation testing
- Start baseline catalog characterization
- Complete pipeline data archive ingest/retrieve implementation
- Complete catalog archive data ingest/retrieve definition

Projected Schedule Timeline II

2nd Quarter 2006

- Complete detailed per-observation pipeline science evaluation testing
- Continue baseline catalog characterization
- Complete merge pipeline implementation
- Complete per-observation pipeline revisions
- Complete baseline catalog UI definition

Projected Schedule Timeline III

3rd Quarter 2006

- Complete archive pipeline data ingest/retrieve revisions
- Complete merge pipeline science evaluation testing
 - Including merge pipeline
- Complete baseline catalog characterization
 - Including merge pipeline
- Complete merge pipeline revisions
 - Based on feedback from science evaluation testing and baseline catalog characterization
- Complete catalog archive data ingest/retrieve implementation

4th Quarter 2006

- Complete production system integration and test
- **Start catalog production**

Projected Schedule Timeline IV

1st Quarter 2007

- Start ongoing operational catalog characterization
- Baseline release of catalog user interface
- **Release Chandra Source Catalog**
- Baseline release of scripting API catalog user interface

2nd Quarter 2007

- Baseline release of advanced catalog user interface

Future

- Catalog
 - Enhanced background determination (background maps)
 - Improved pile-up estimation
 - Enhanced merge processing I
 - Merging across observations with similar pointing and roll
 - Enhanced Merge processing II
 - Multi-observation (simultaneous) detect and source properties
 - Mosaics
- User Interface
 - Catalog UI enhancements including VO compliant query language and workflow support as standards are developed
- Characterization
 - Operational catalog characterization will continue as needed to ensure the integrity of the catalog data