

V&V Reference Report

L2 ASCDS Version : 10.7.1

Observation 22167 - L2 Version 1
Chandra X-Ray Center

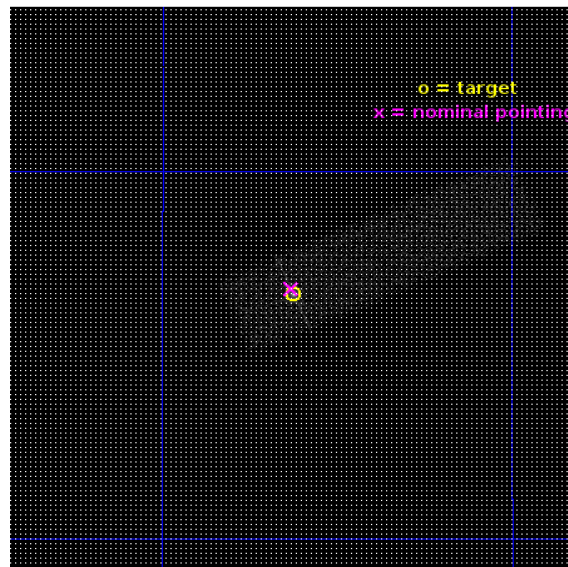
L2 Processing Date : Apr 6 2019

Contents

1	Front	2
2	OBI	3
2.1	OBI	3
2.1.1	Images	3
2.1.2	Bias	3
2.1.3	Parameters	4
2.1.4	Events	4
2.2	Compared Parameters	5
2.3	Aspect	6
2.4	Star Slots	9
2.4.1	Slot 3	9
2.4.2	Slot 4	10
2.4.3	Slot 5	11
2.4.4	Slot 6	12
2.4.5	Slot 7	13
2.5	FID Slots	14
2.5.1	Slot 0	14
2.5.2	Slot 1	15
2.5.3	Slot 2	16
A	Summary	17
A.1	Status	17
A.2	Comments	17

1 Front

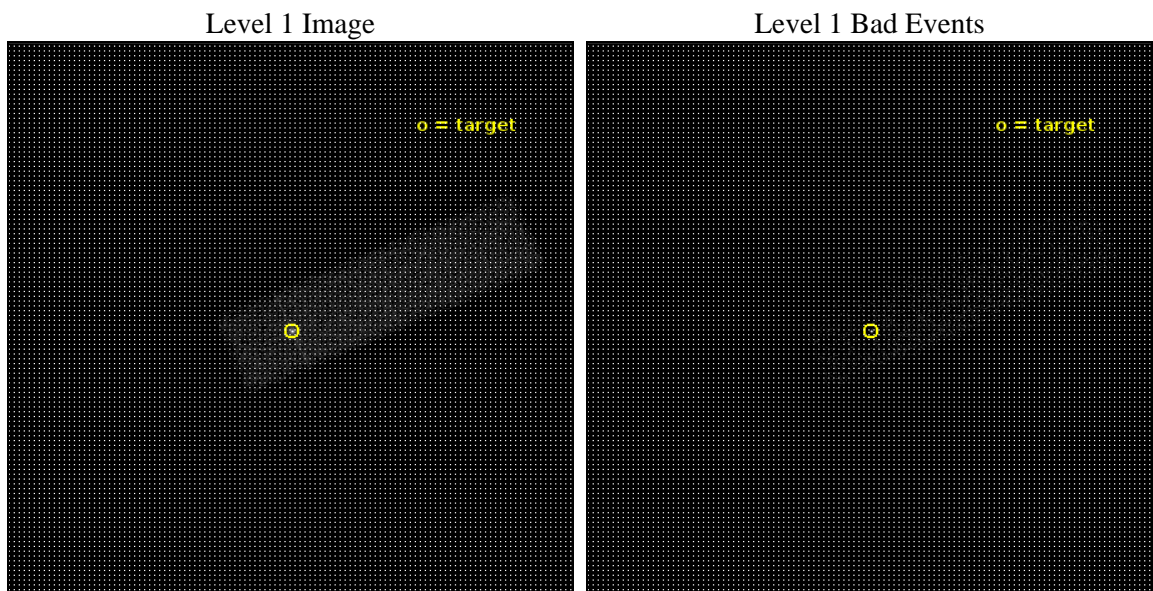
seq_num	703875	Sequence number
obs_id	22167	Observation id
title	C-BASS: A Chandra Legacy Survey of AGN at the Highest Spatial Resolutions	Proposal title
observer	Michael Koss	Principal investigator
object	LEDA138501	Source name
dtcycle	0	
cycle	P	events from which exps? Prim/Second/Both
ra_targ	32.405865	Observer's specified target RA [deg]
dec_targ	52.444347	Observer's specified target Dec [deg]
ra_nom	32.407447818633	Nominal RA [deg]
dec_nom	52.446818067271	Nominal Dec [deg]
roll_nom	336.067599057	Nominal Roll [deg]
revision	1	Processing version of data
ontime	10059.999400377	Sum of GTIs [s]
livetime	9569.1043473579	Livetime [s]
ontime7	10059.999400377	Sum of GTIs [s]
l2events	21767	Number of level 2 events



2 OBI

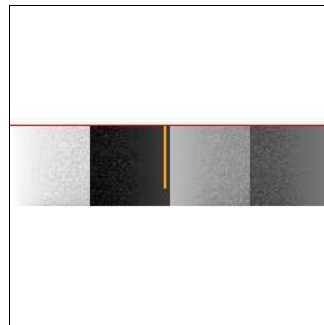
2.1 OBI

2.1.1 Images



2.1.2 Bias

Chip 7



2.1.3 Parameters

obi_num	0	Obi number	sched_exp_time	10000.000000	[s] Scheduled observation exposure time
ascdsver	10.7.1	Processing system revision	ontime	10059.999400377	Sum of GTIs [s]
caldsver	4.8.2	 	ontime7	10059.999400377	Sum of GTIs [s]
date	2019-04-06T14:03:26	Date and time of file creation	l1events	39340	Number of level 1 events
revision	1	Processing version of data			

2.1.4 Events

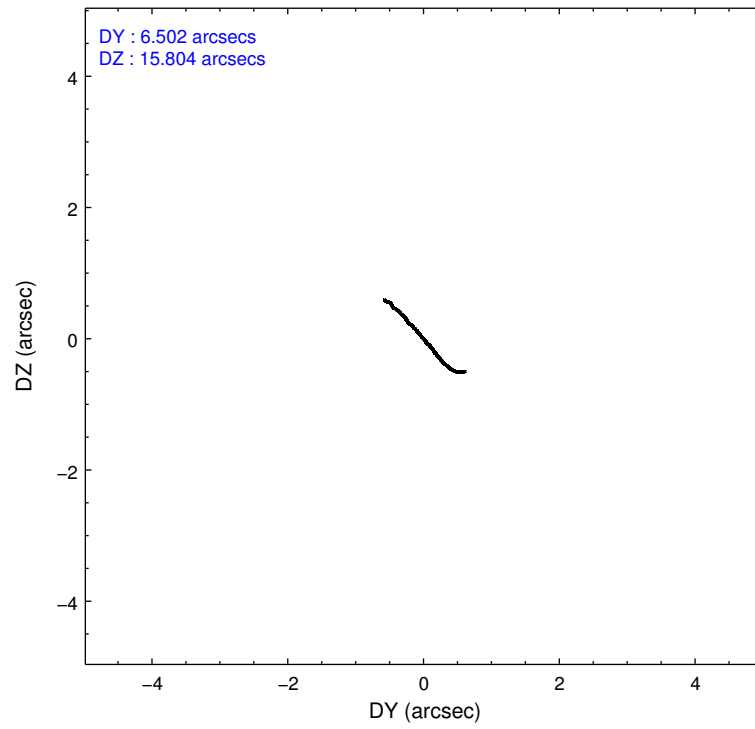
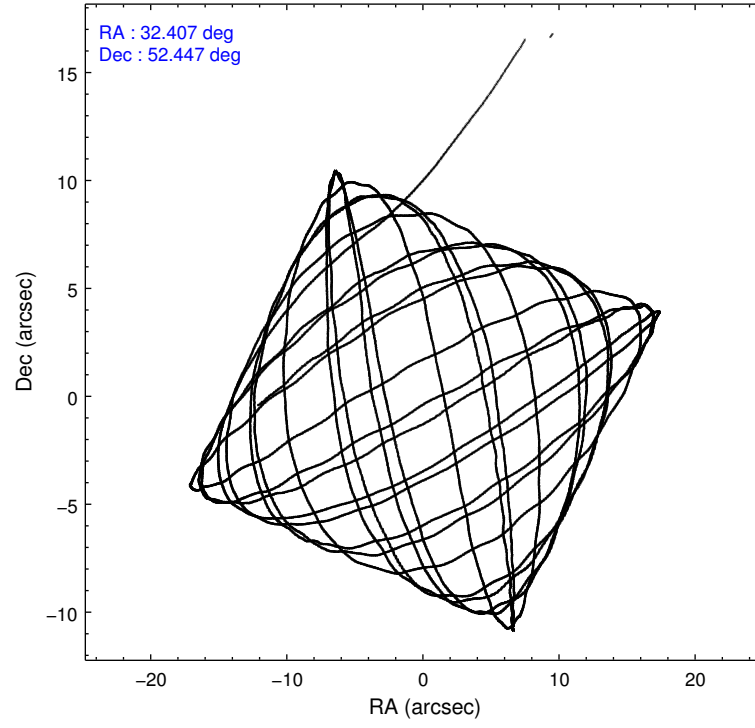
	ccd 7
level 1 events	39340
rejected events	17130
rejected %	43%

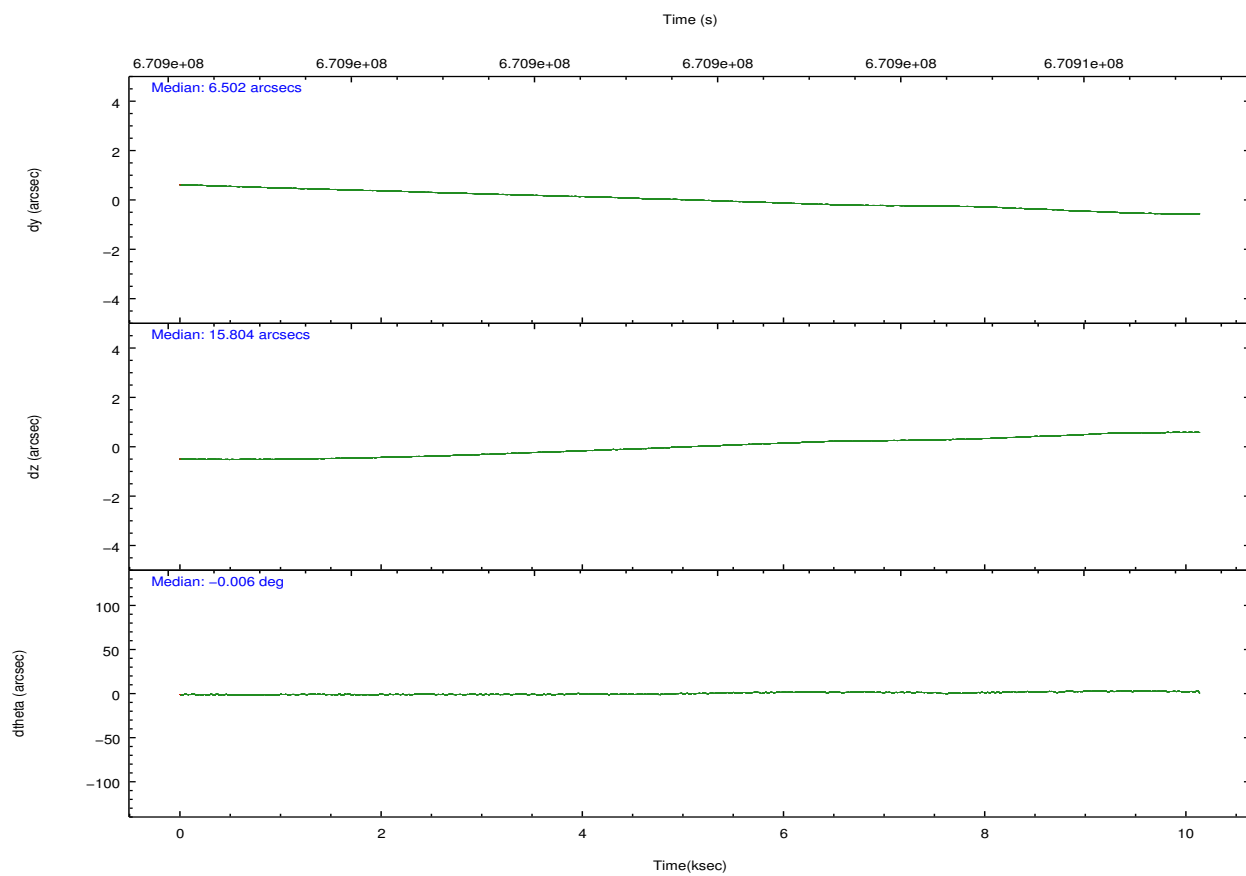
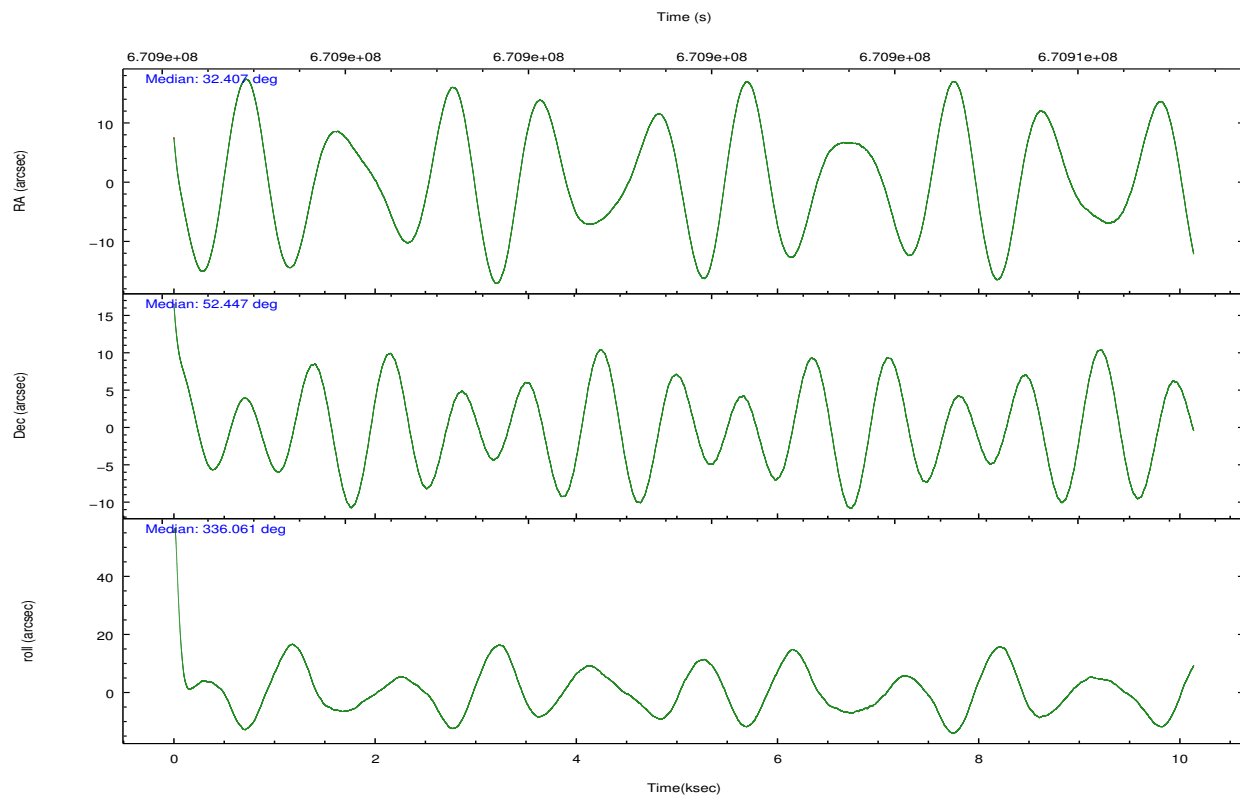
	ccd 7
grade 0 events	2886
	7%
grade 1 events	258
	0%
grade 2 events	4722
	12%
grade 3 events	2203
	5%
grade 4 events	2346
	5%
grade 5 events	3672
	9%
grade 6 events	10061
	25%
grade 7 events	13192
	33%

2.2 Compared Parameters

Parameter	Planned	Actual	Parameter	Planned	Actual
Instrument	ACIS	ACIS	Obspar format version number	7	7
Detector	ACIS-7	ACIS-7	Obspar file type	PREDICTED	ACTUAL
Grating	NONE	NONE	Obspar update status	NONE	UPDATED
Data mode	VFAINT	VFAINT	Number of optional ACIS chips dropped	0	0
Observation mode	POINTING	POINTING	On-chip summing requested	N	N
[deg] Pointing RA	32.362750	32.40744781863263	Subarray requested	CUSTOM	1/4
[deg] Pointing Dec	52.443508	52.44681806727054	Subarray start row	385	385
[deg] Pointing Roll	335.946320	336.0675990569978	Subarray row count	256	256
[mm] SIM focus pos	-0.684267	-0.6828225247311905	Alternating exposures requested	N	N
[mm] SIM defocus	0	0.001444936568705701	[s] Primary exposure time	0.000000	0.8
[mm] SIM translation stage pos	-190.132523	-190.1400660498719			
[mm] SIM translation stage offset	0	0.00754346686406393			
[s] Observation start time (MET)	670896742.184000	670895416.32762			
Observation start date	2019-04-06T00:11:13	2019-04-05T23:50:16			
[s] Observation end time (MET)	670906742.184000	670907484.67835			
Observation end date	2019-04-06T02:57:53	2019-04-06T03:11:24			
Read mode	TIMED	TIMED			

2.3 Aspect



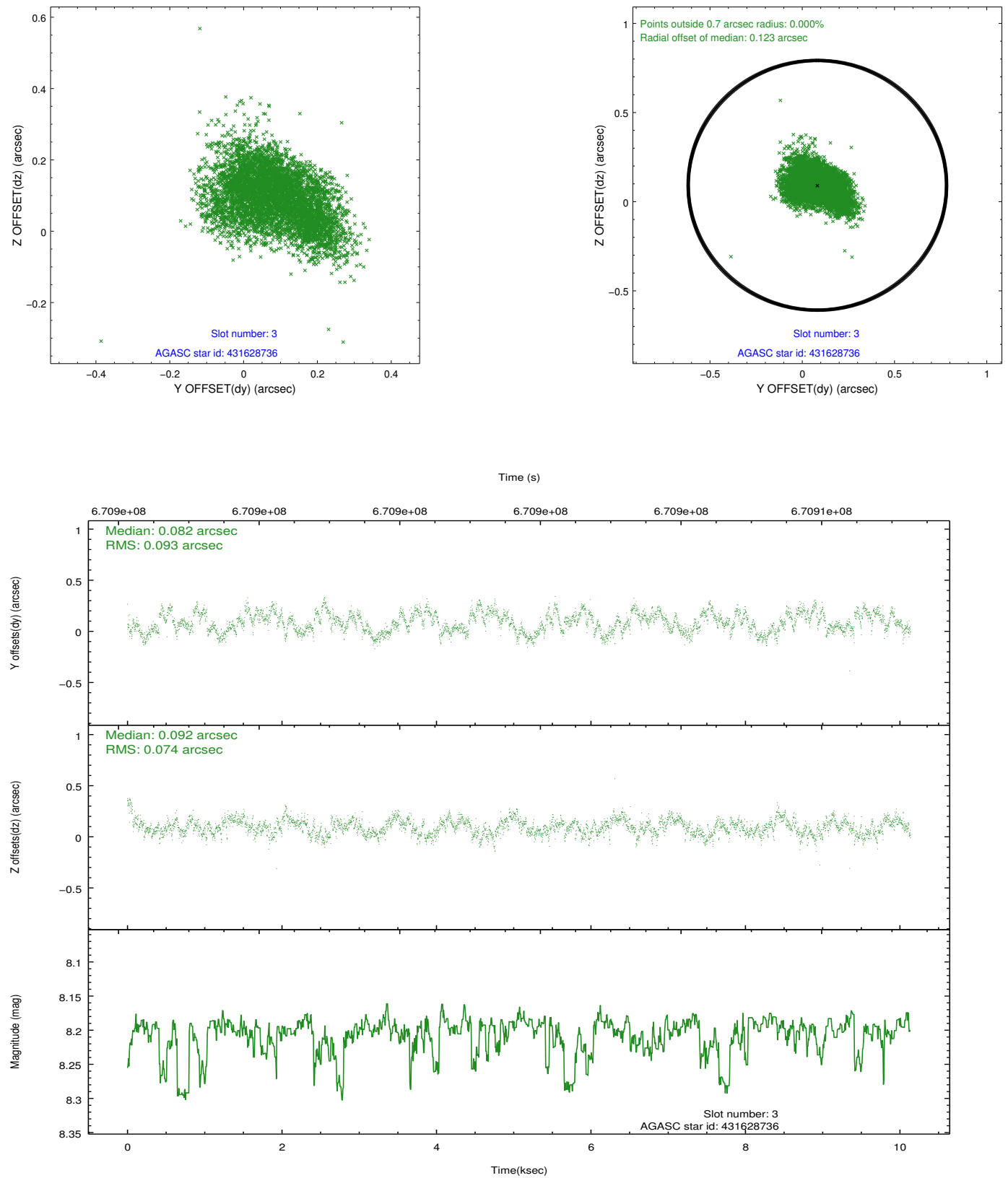


Slot Statistics

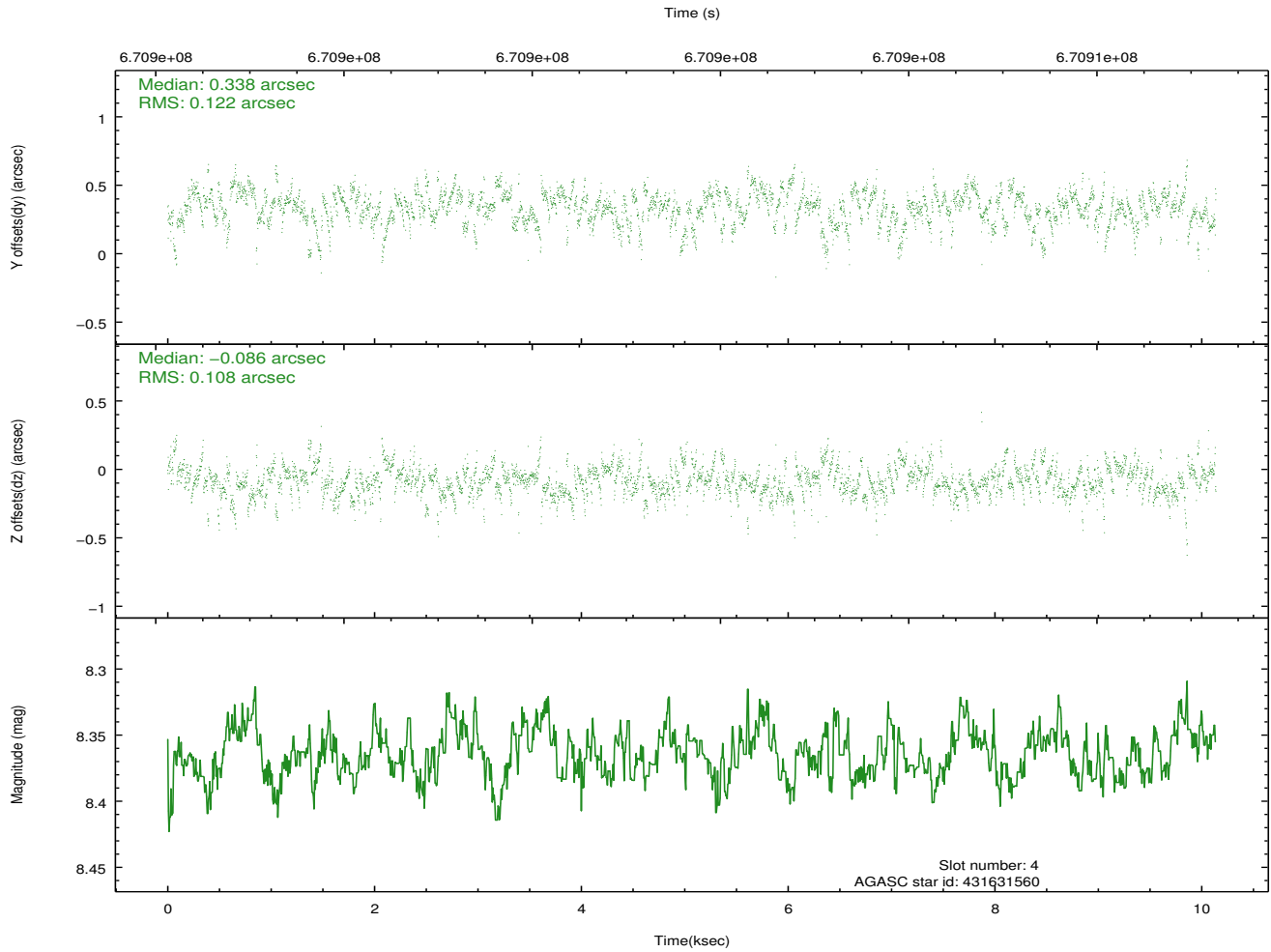
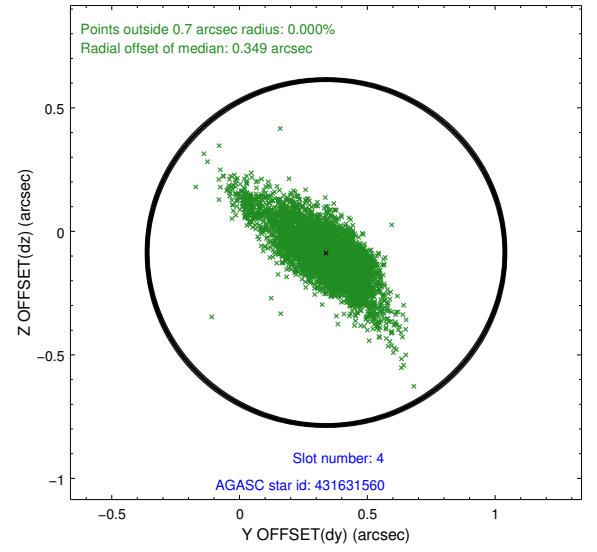
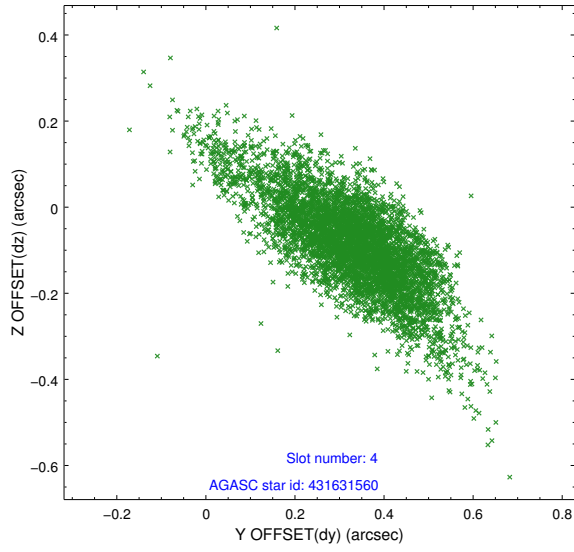
pt	status	used	id	mag	n_pts	frac_pts	med_dy	med_dz	dr1	dr2	ra	dec	mean_y	mea
0	FID		ACIS-S-2	7.12	2473	1.000	-0.295	-0.122	0.010	0.016	0.000000	0.000000	-759.48	-1737
1	FID		ACIS-S-4	7.25	2473	1.000	0.589	0.175	0.011	0.018	0.000000	0.000000	2154.38	170
2	FID		ACIS-S-5	7.22	2473	1.000	-0.322	-0.044	0.014	0.025	0.000000	0.000000	-1811.75	164
3	GUIDE	used	431628736	8.20	4945	1.000	0.082	0.092	0.127	0.200	32.638874	51.783832	1529.95	-1916
4	GUIDE	used	431631560	8.36	4942	1.000	0.338	-0.086	0.156	0.324	32.803271	51.611505	2120.27	-2331
5	GUIDE	used	431634784	8.68	4944	1.000	-0.344	-0.402	0.083	0.136	32.871631	52.326477	1193.00	74
6	GUIDE	used	483005160	9.00	4937	1.000	-0.232	-0.074	0.125	0.207	32.205253	52.854327	-915.10	1210
7	GUIDE	used	431636608	8.62	4943	1.000	0.168	0.470	0.100	0.162	31.005887	52.198771	-2385.43	-1999

2.4 Star Slots

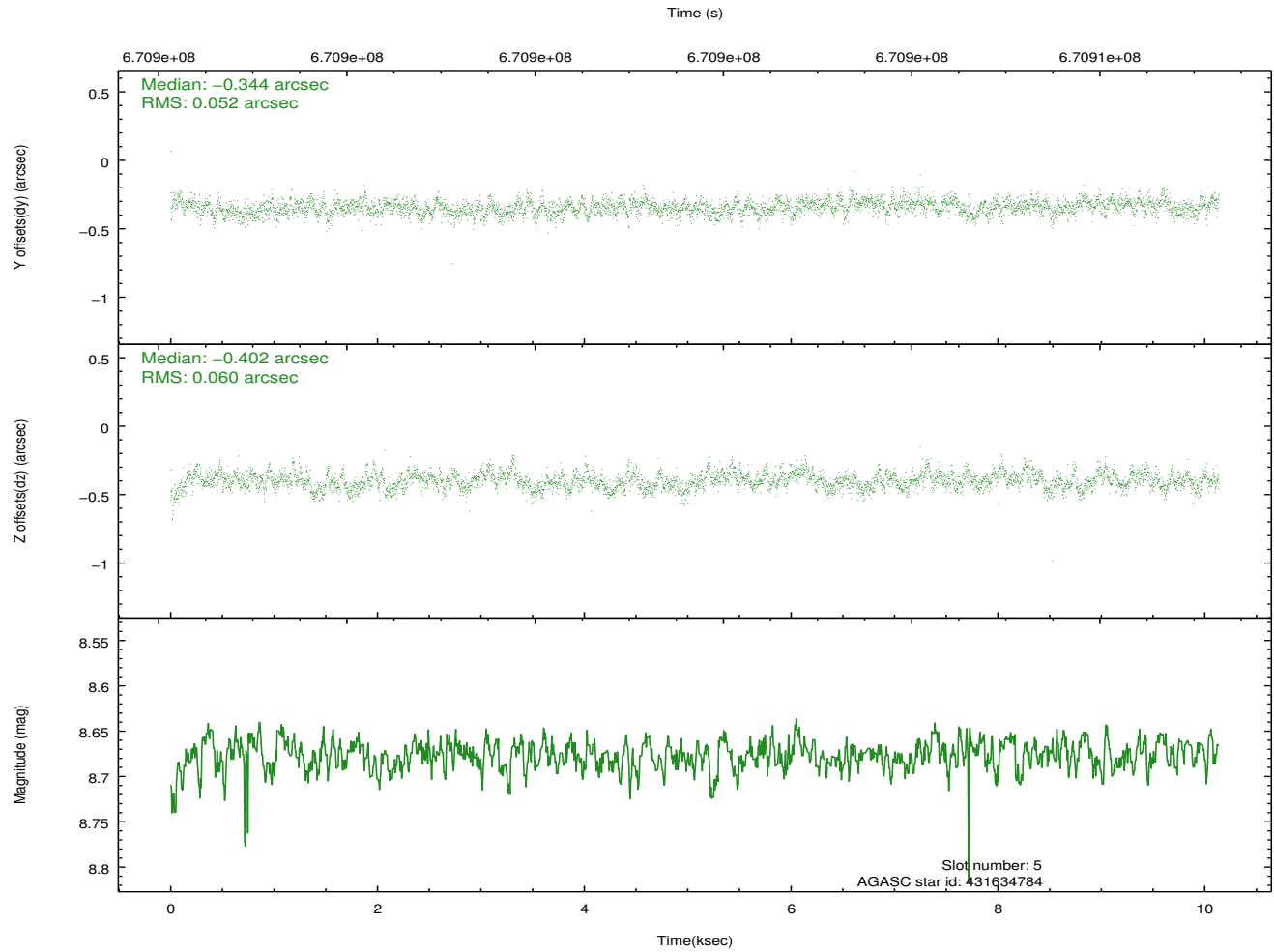
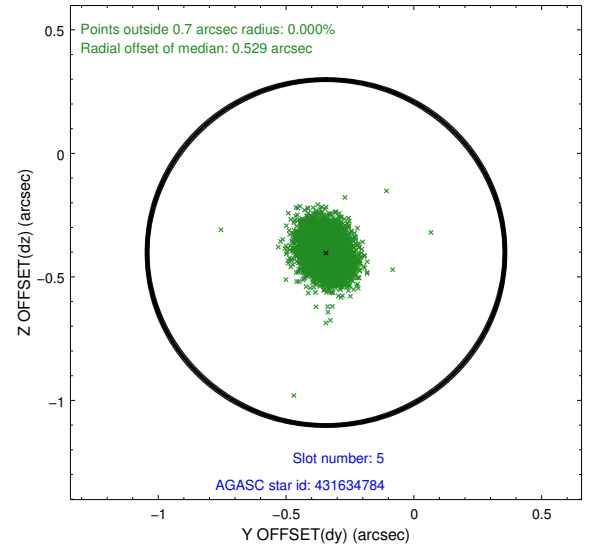
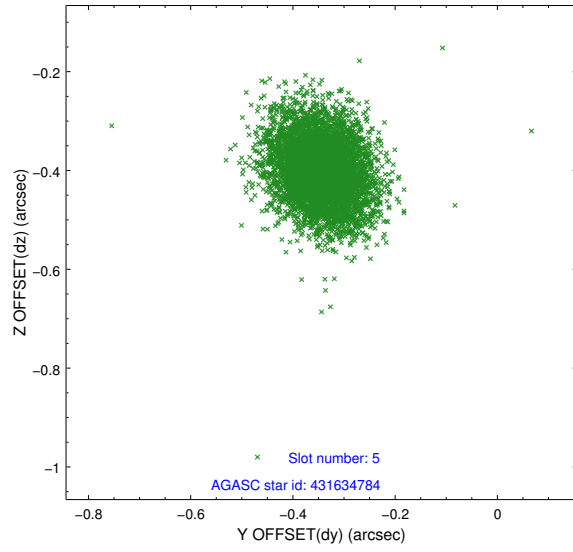
2.4.1 Slot 3



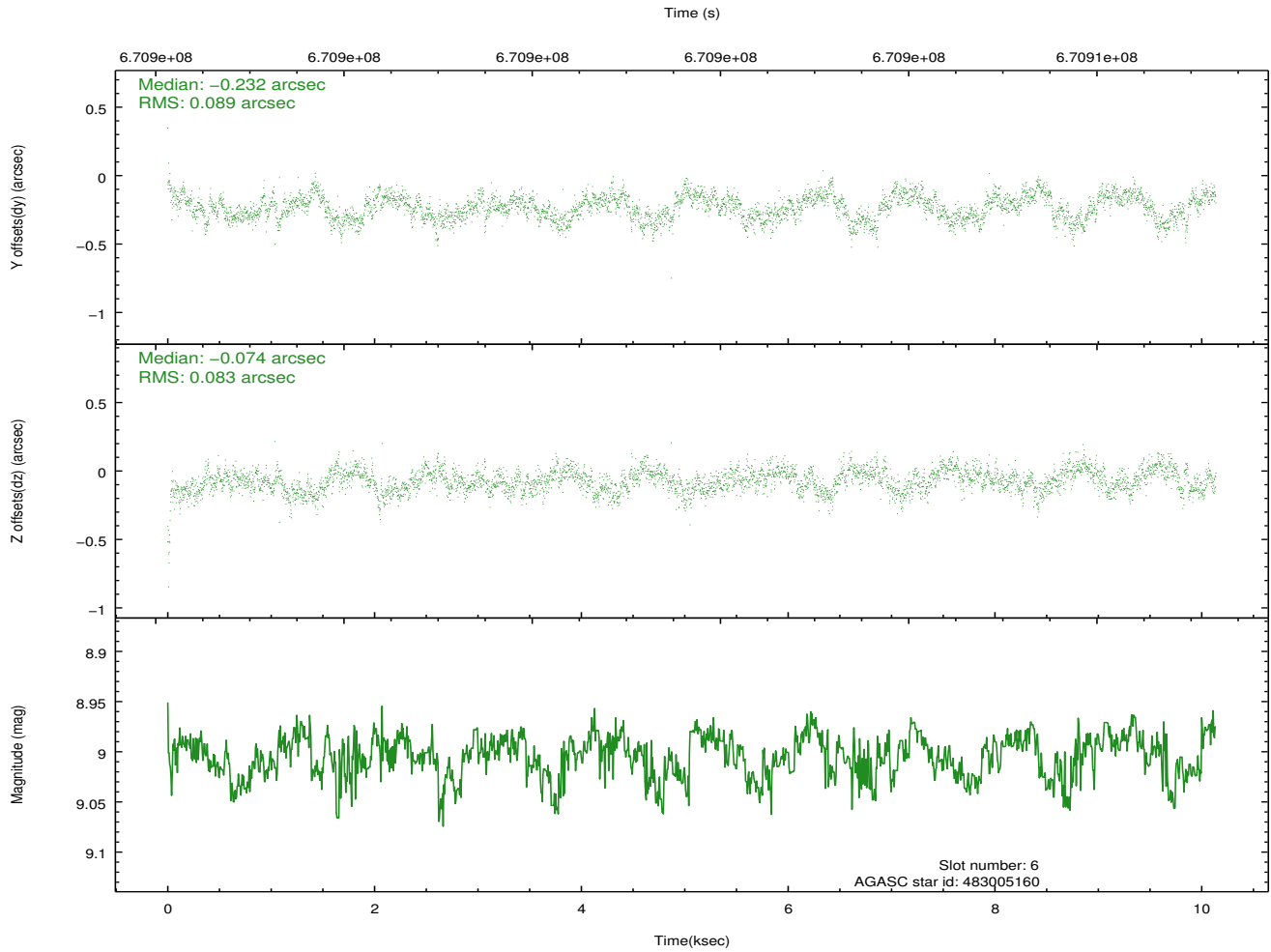
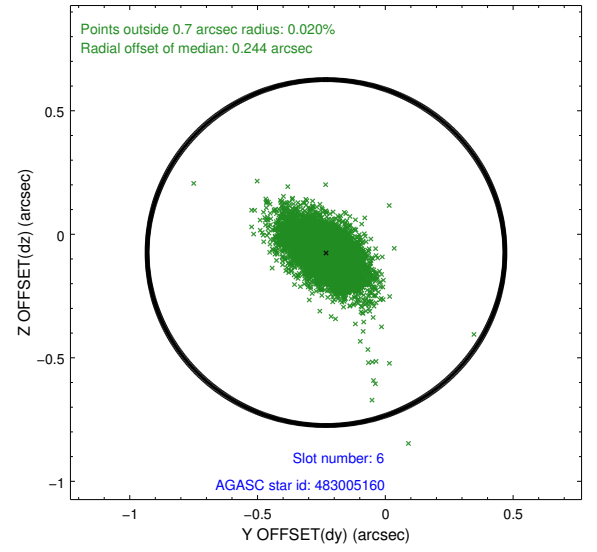
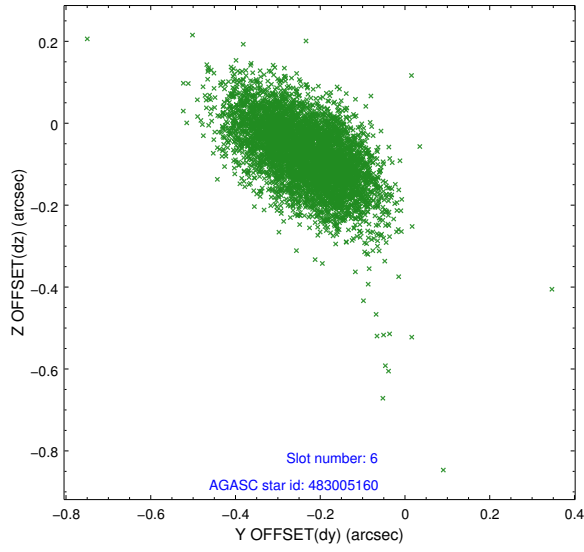
2.4.2 Slot 4



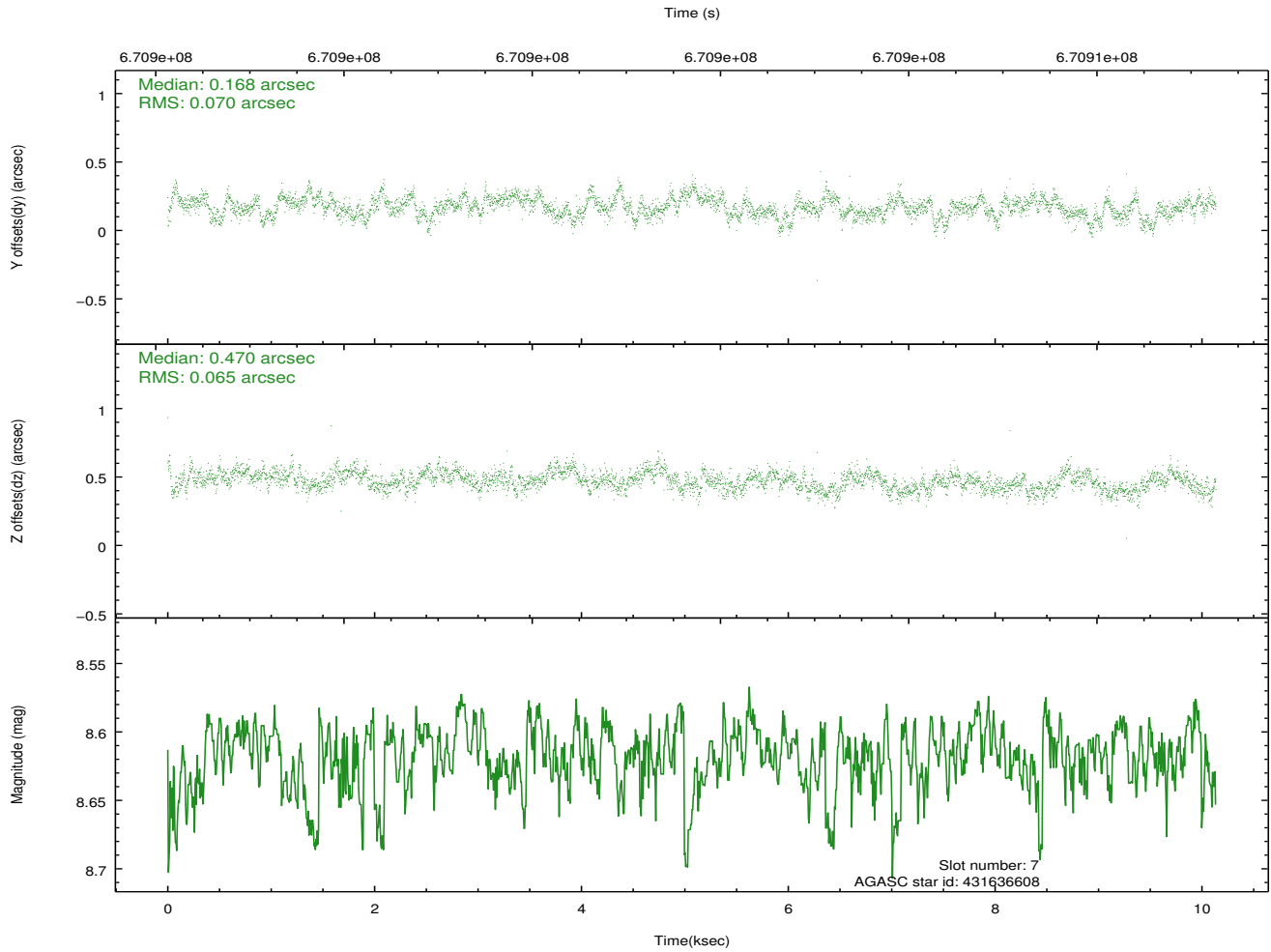
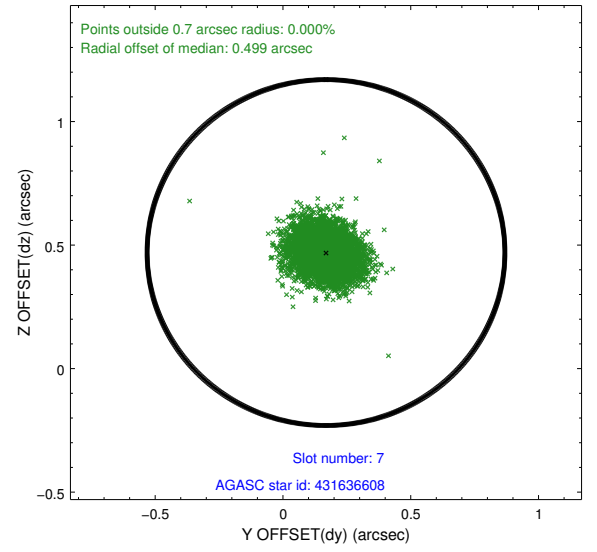
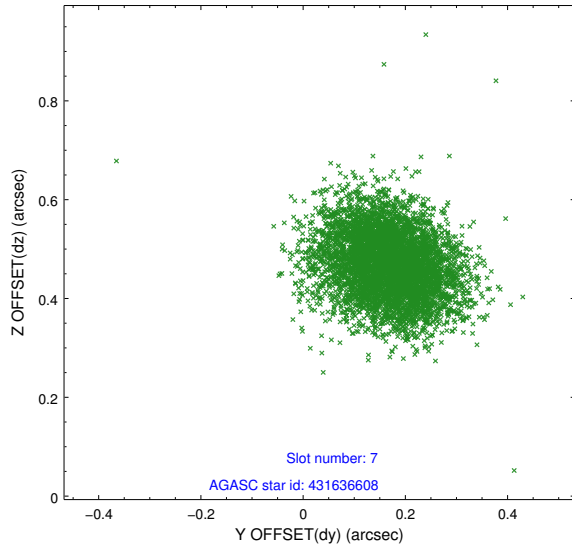
2.4.3 Slot 5



2.4.4 Slot 6

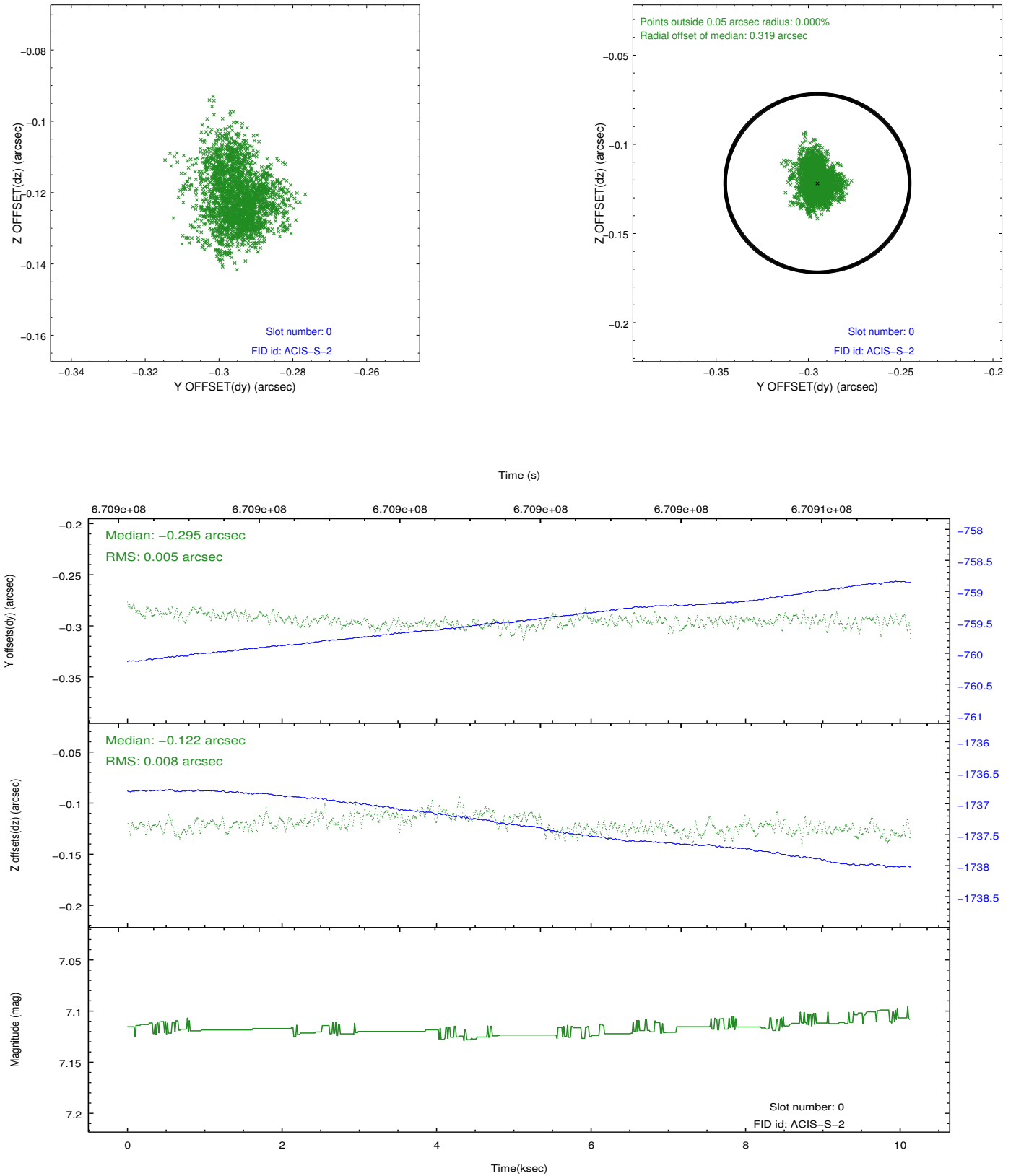


2.4.5 Slot 7

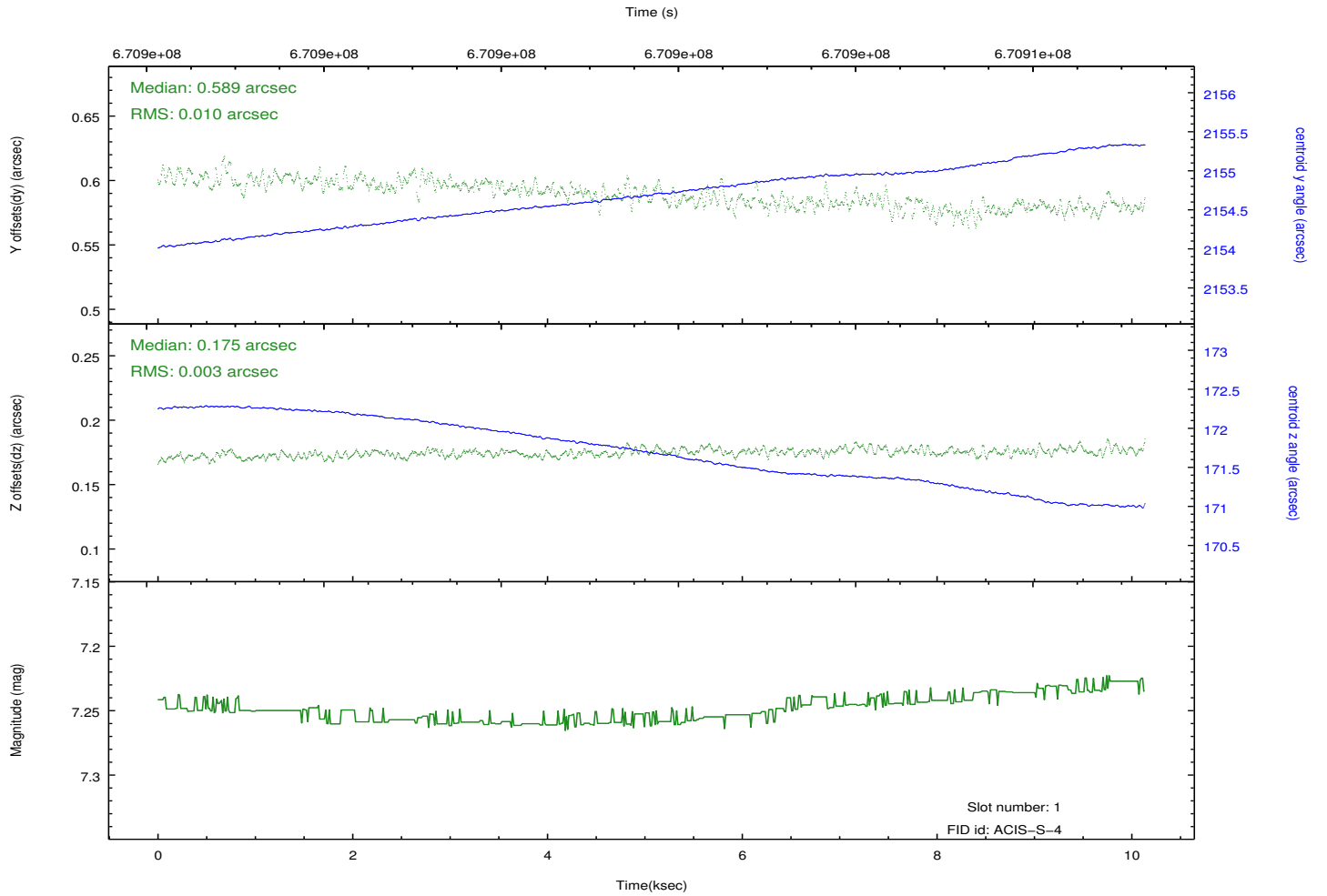
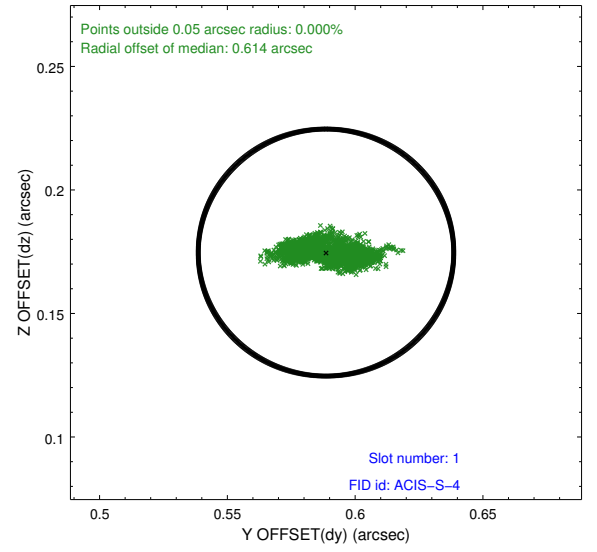
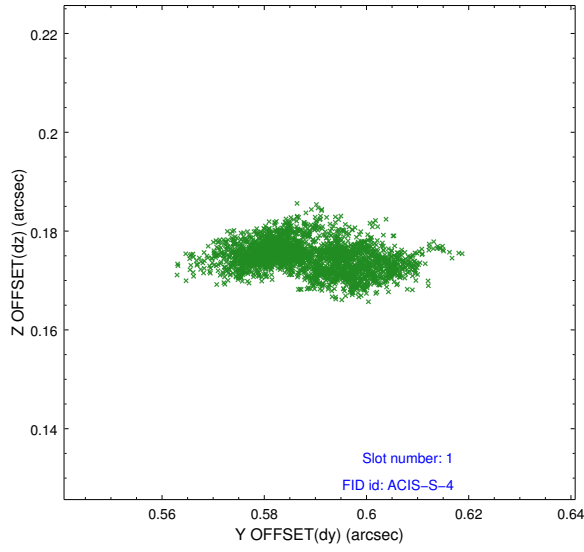


2.5 FID Slots

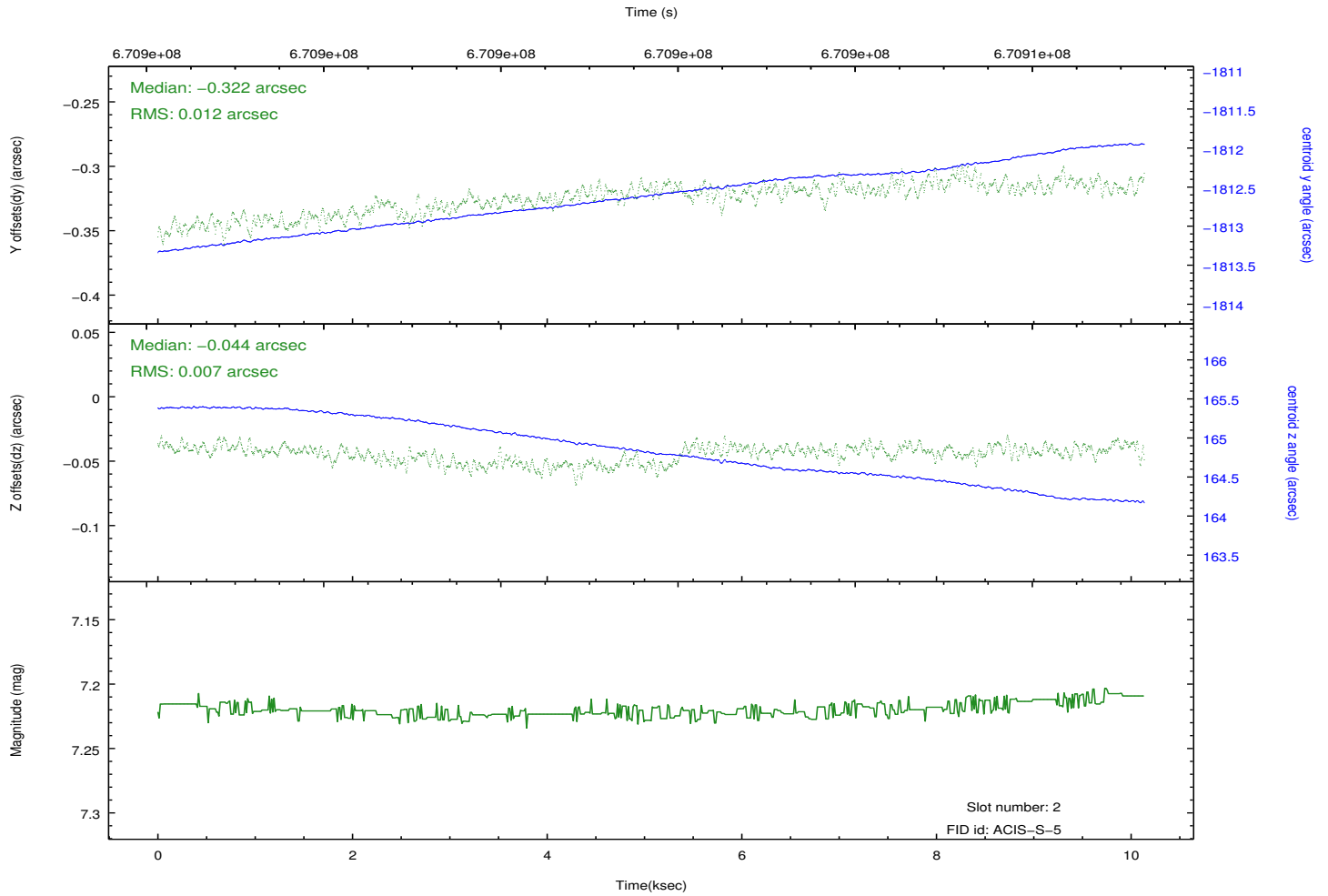
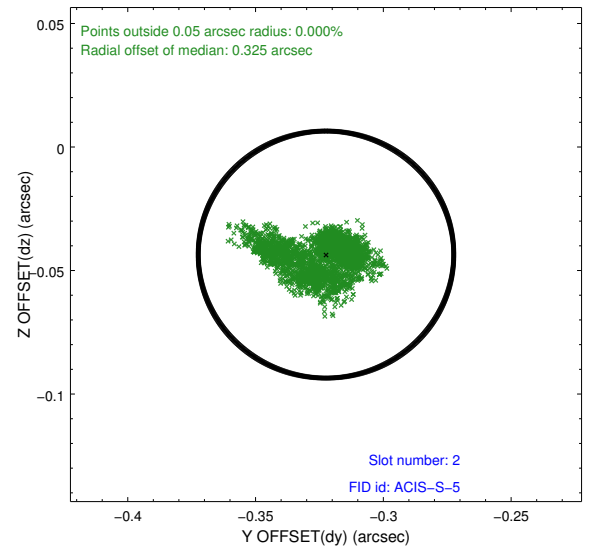
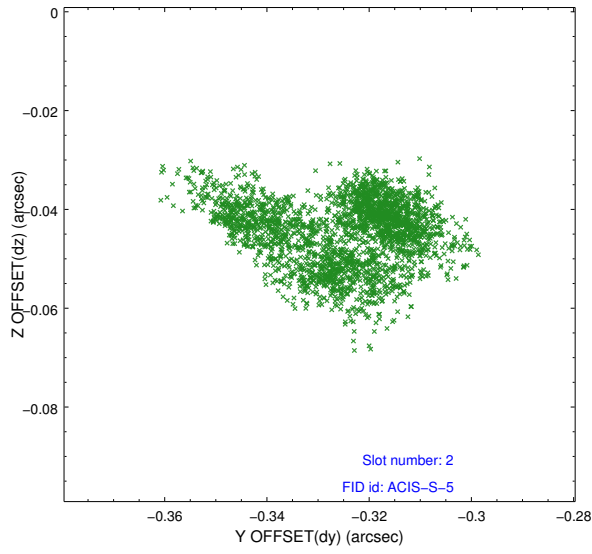
2.5.1 Slot 0



2.5.2 Slot 1



2.5.3 Slot 2



A Summary

A.1 Status

V&V Scientist	Beth Sundheim
V&V Date (YYYY-MM-DD)	2019.04.06
V&V Edition	1
V&V Disposition and Status	OK
V&V Charge Time	10.059999400377

A.2 Comments