

V&V Reference Report

L2 ASCDS Version : 10.7.1

Observation 21525 - L2 Version 1
Chandra X-Ray Center

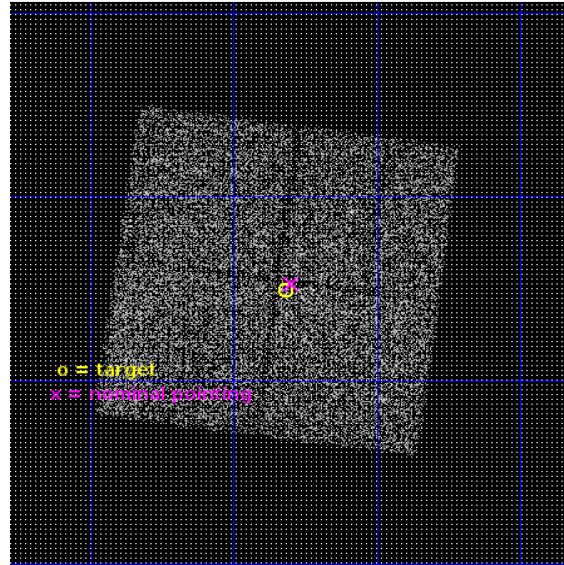
L2 Processing Date : Mar 27 2019

Contents

1	Front	2
2	OBI	3
2.1	OBI	3
2.1.1	Images	3
2.1.2	Bias	3
2.1.3	Parameters	4
2.1.4	Events	4
2.2	Compared Parameters	5
2.3	Aspect	6
2.4	Star Slots	9
2.4.1	Slot 3	9
2.4.2	Slot 4	10
2.4.3	Slot 5	11
2.4.4	Slot 6	12
2.4.5	Slot 7	13
2.5	FID Slots	14
2.5.1	Slot 0	14
2.5.2	Slot 1	15
2.5.3	Slot 2	16
A	Summary	17
A.1	Status	17
A.2	Comments	17

1 Front

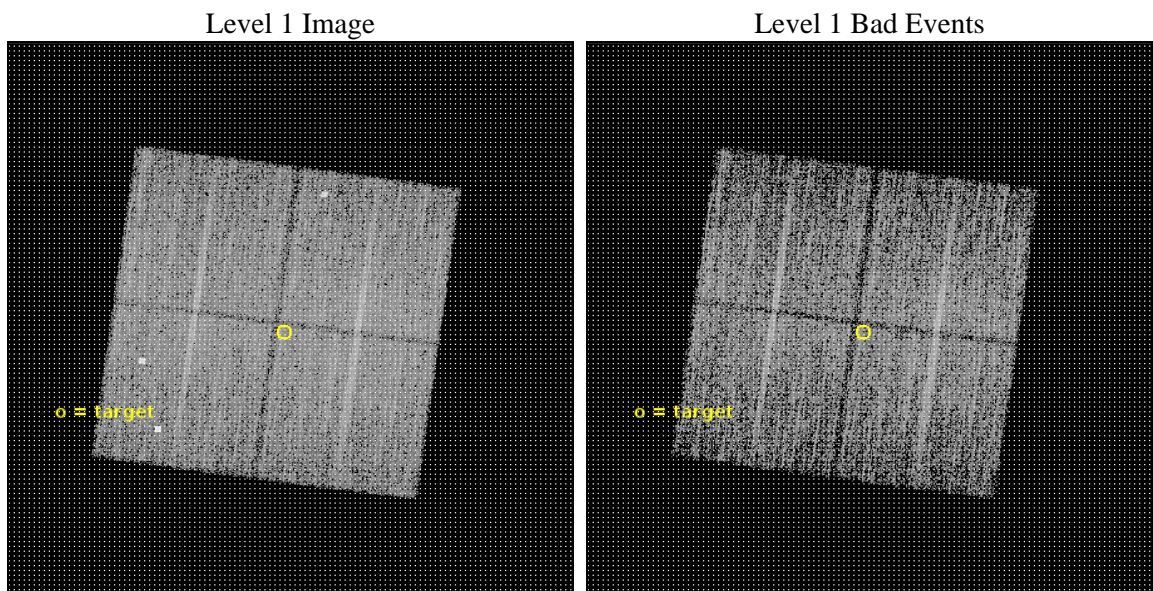
seq_num	703818	Sequence number
obs_id	21525	Observation id
title	Black Holes in Green Peas?	Proposal title
observer	Sangeeta Malhotra	Principal investigator
object	J140018.94+010454.0	Source name
dtcycle	0	
cycle	P	events from which exps? Prim/Second/Both
ra_targ	210.07875	Observer's specified target RA [deg]
dec_targ	1.081639	Observer's specified target Dec [deg]
ra_nom	210.07443628102	Nominal RA [deg]
dec_nom	1.0875074186101	Nominal Dec [deg]
roll_nom	97.809736006989	Nominal Roll [deg]
revision	1	Processing version of data
ontime	10074.613759637	Sum of GTIs [s]
livetime	9942.9815140445	Livetime [s]
ontime0	10077.631719947	Sum of GTIs [s]
ontime1	10077.672759891	Sum of GTIs [s]
ontime2	10077.713799953	Sum of GTIs [s]
ontime3	10074.613759637	Sum of GTIs [s]
l2events	28175	Number of level 2 events



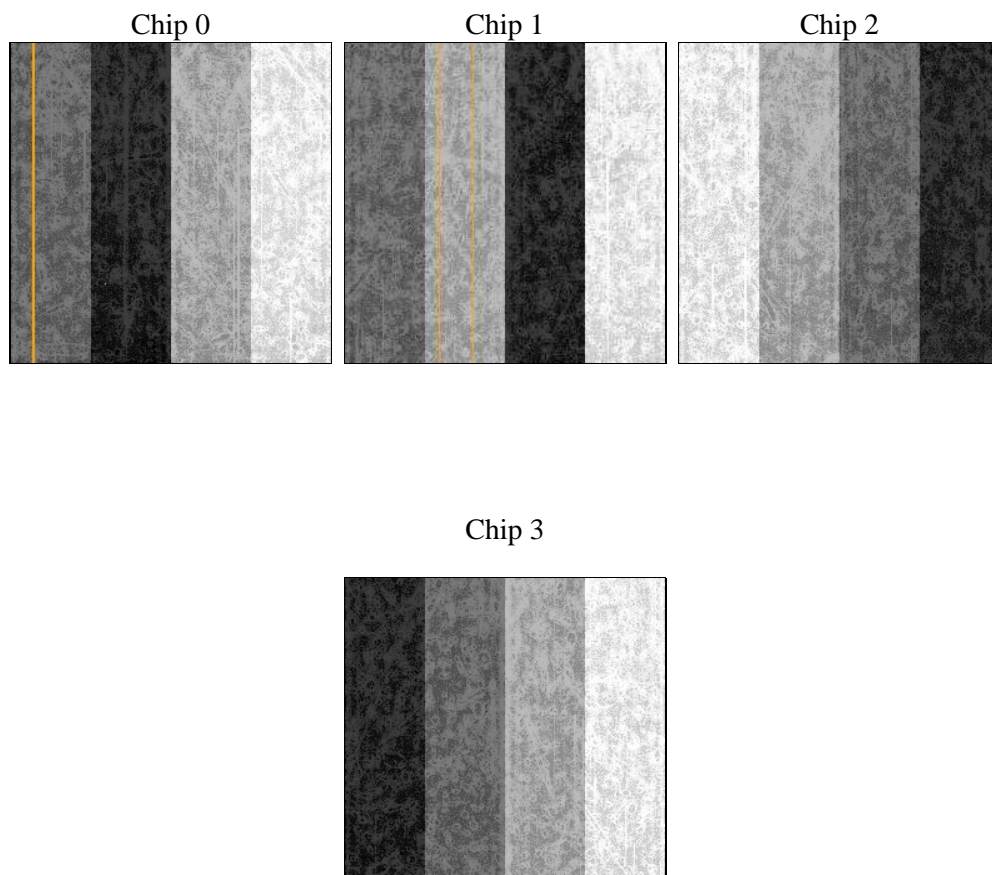
2 OBI

2.1 OBI

2.1.1 Images



2.1.2 Bias



2.1.3 Parameters

obi_num	0	Obi number	sched_exp_time	10000.000000	[s] Scheduled observation exposure time
ascdsver	10.7.1	Processing system revision	ontime	10074.613759637	Sum of GTIs [s]
caldsver	4.8.2	 	ontime0	10077.631719947	Sum of GTIs [s]
date	2019-03-27T13:52:49	Date and time of file creation	ontime1	10077.672759891	Sum of GTIs [s]
revision	1	Processing version of data	ontime2	10077.713799953	Sum of GTIs [s]
			ontime3	10074.613759637	Sum of GTIs [s]
			l1events	303313	Number of level 1 events

2.1.4 Events

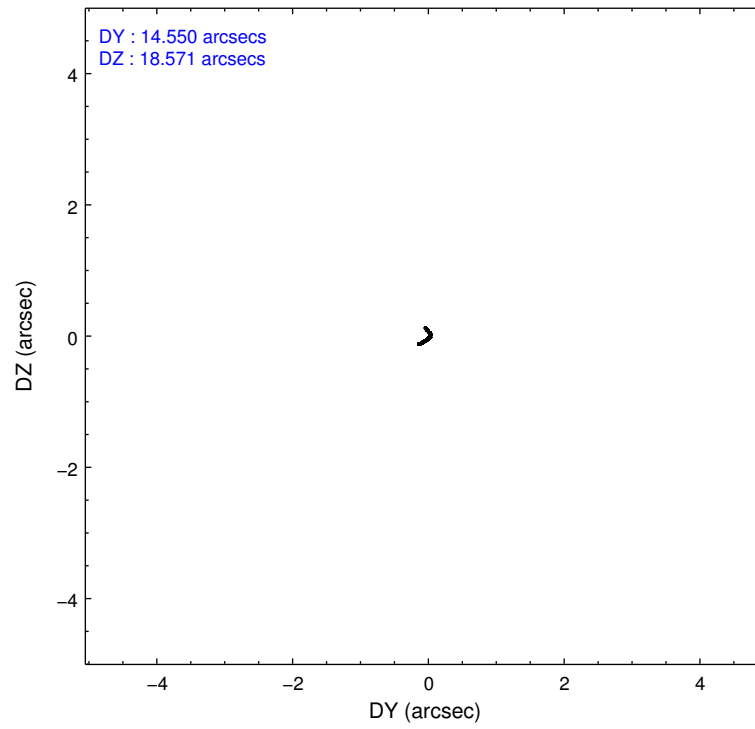
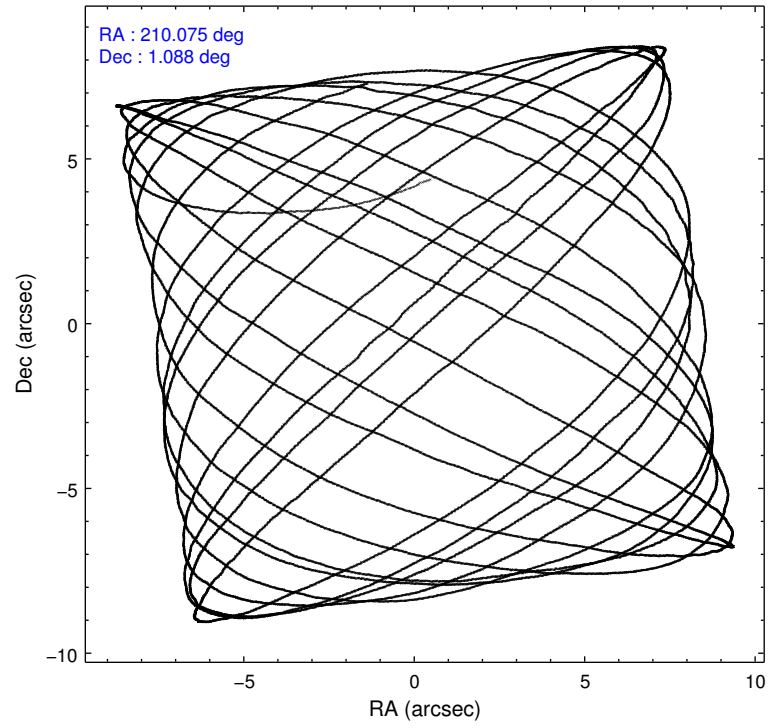
	ccd 0	ccd 1	ccd 2	ccd 3
level 1 events	71605	77706	79610	74392
rejected events	63201	63741	70236	66363
rejected %	88%	82%	88%	89%

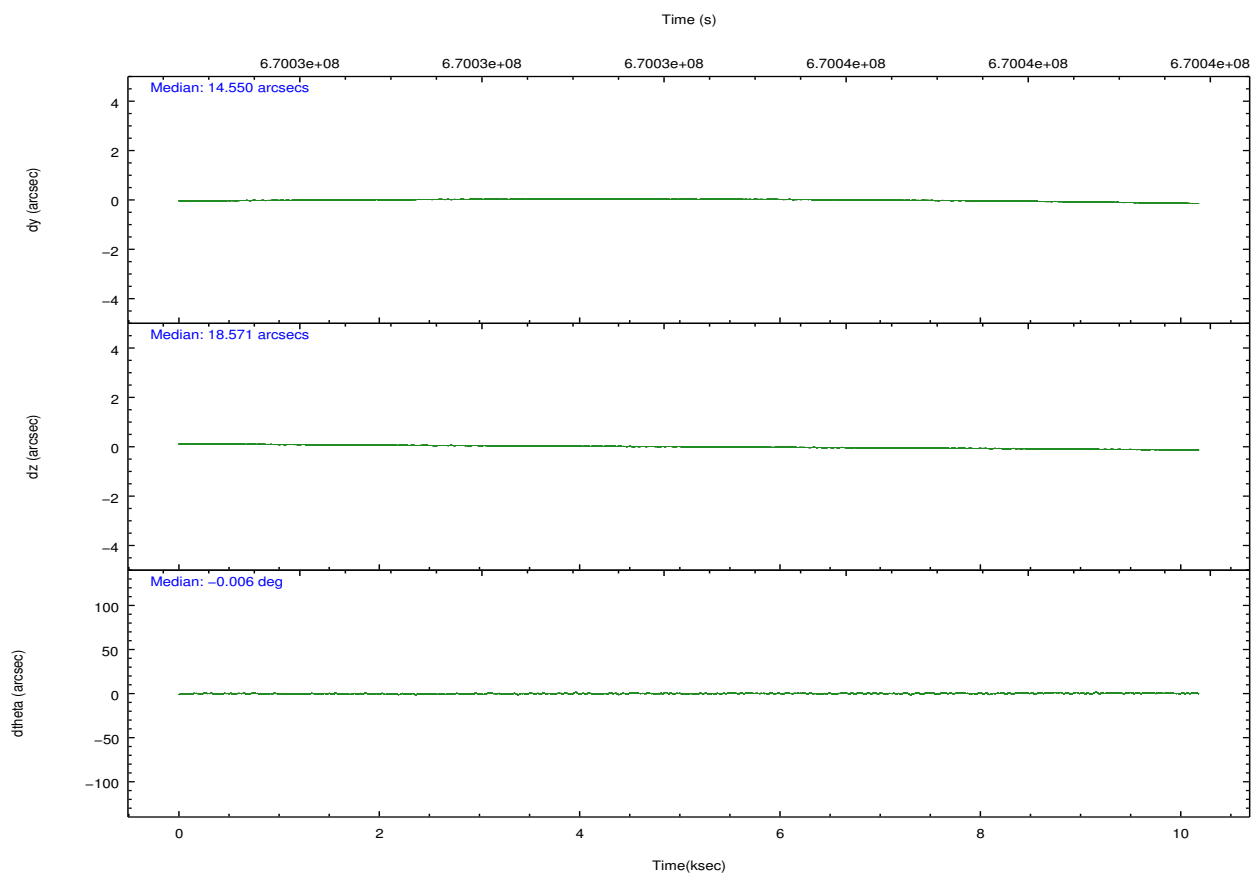
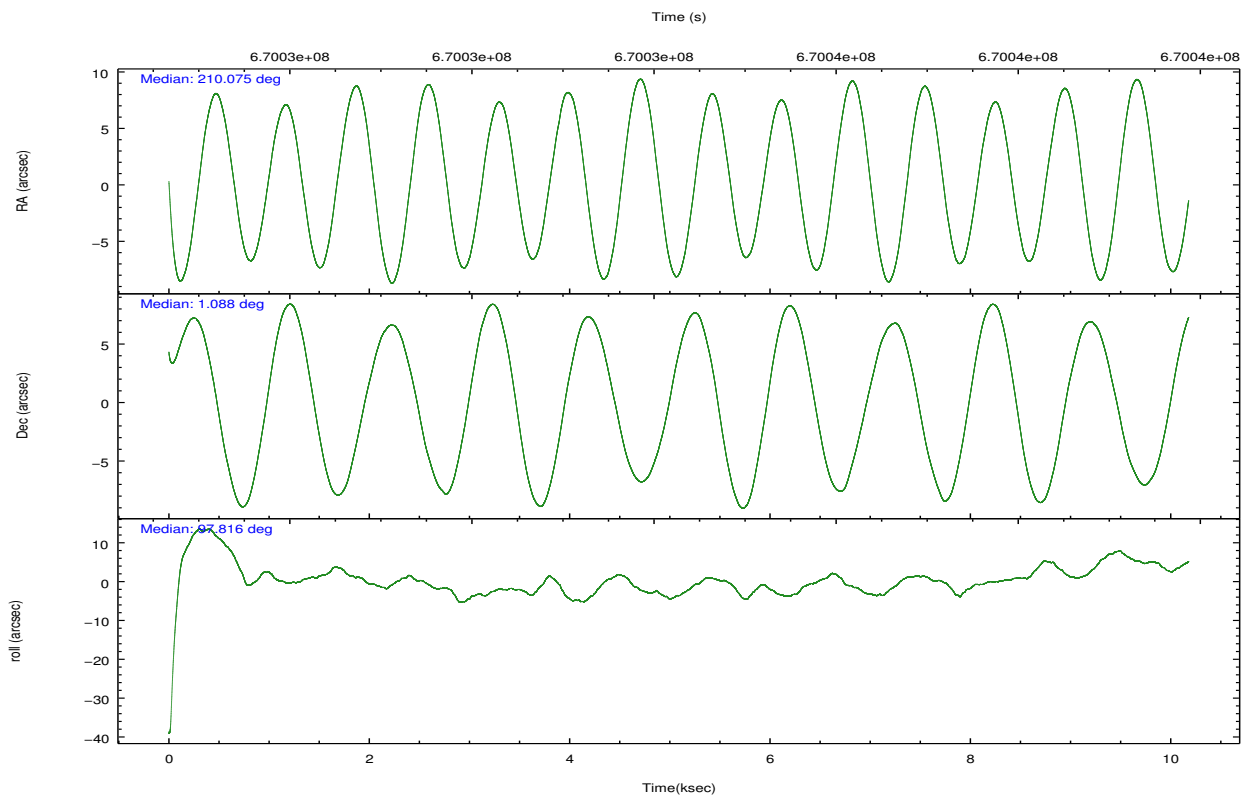
	ccd 0	ccd 1	ccd 2	ccd 3
grade 0 events	2714	4826	4035	2786
	3%	6%	5%	3%
grade 1 events	50	49	50	53
	0%	0%	0%	0%
grade 2 events	2095	5281	2007	1813
	2%	6%	2%	2%
grade 3 events	892	815	784	853
	1%	1%	0%	1%
grade 4 events	835	842	866	811
	1%	1%	1%	1%
grade 5 events	3254	3393	3087	3743
	4%	4%	3%	5%
grade 6 events	1872	2212	1687	1768
	2%	2%	2%	2%
grade 7 events	59893	60288	67094	62565
	83%	77%	84%	84%

2.2 Compared Parameters

Parameter	Planned	Actual	Parameter	Planned	Actual
Instrument	ACIS	ACIS	Obspar format version number	7	7
Detector	ACIS-0123	ACIS-0123	Obspar file type	PREDICTED	ACTUAL
Grating	NONE	NONE	Obspar update status	NONE	UPDATED
Data mode	FAINT	FAINT	Number of optional ACIS chips dropped	0	0
Observation mode	POINTING	POINTING	On-chip summing requested	N	N
[deg] Pointing RA	210.091502	210.0744362810197	Subarray requested	NONE	NONE
[deg] Pointing Dec	1.065741	1.087507418610065	Alternating exposures requested	N	N
[deg] Pointing Roll	97.600785	97.80973600698928	[s] Primary exposure time	0.000000	3.1
[mm] SIM focus pos	-0.782348	-0.7809083437167272			
[mm] SIM defocus	0	0.001439871863259334			
[mm] SIM translation stage pos	-233.592463	-233.5874344608287			
[mm] SIM translation stage offset	0	-0.005018542100998502			
[s] Observation start time (MET)	670029379.184000	670028435.4007601			
Observation start date	2019-03-26T23:15:10	2019-03-26T23:00:35			
[s] Observation end time (MET)	670039379.184000	670039641.21393			
Observation end date	2019-03-27T02:01:50	2019-03-27T02:07:21			
Read mode	TIMED	TIMED			

2.3 Aspect



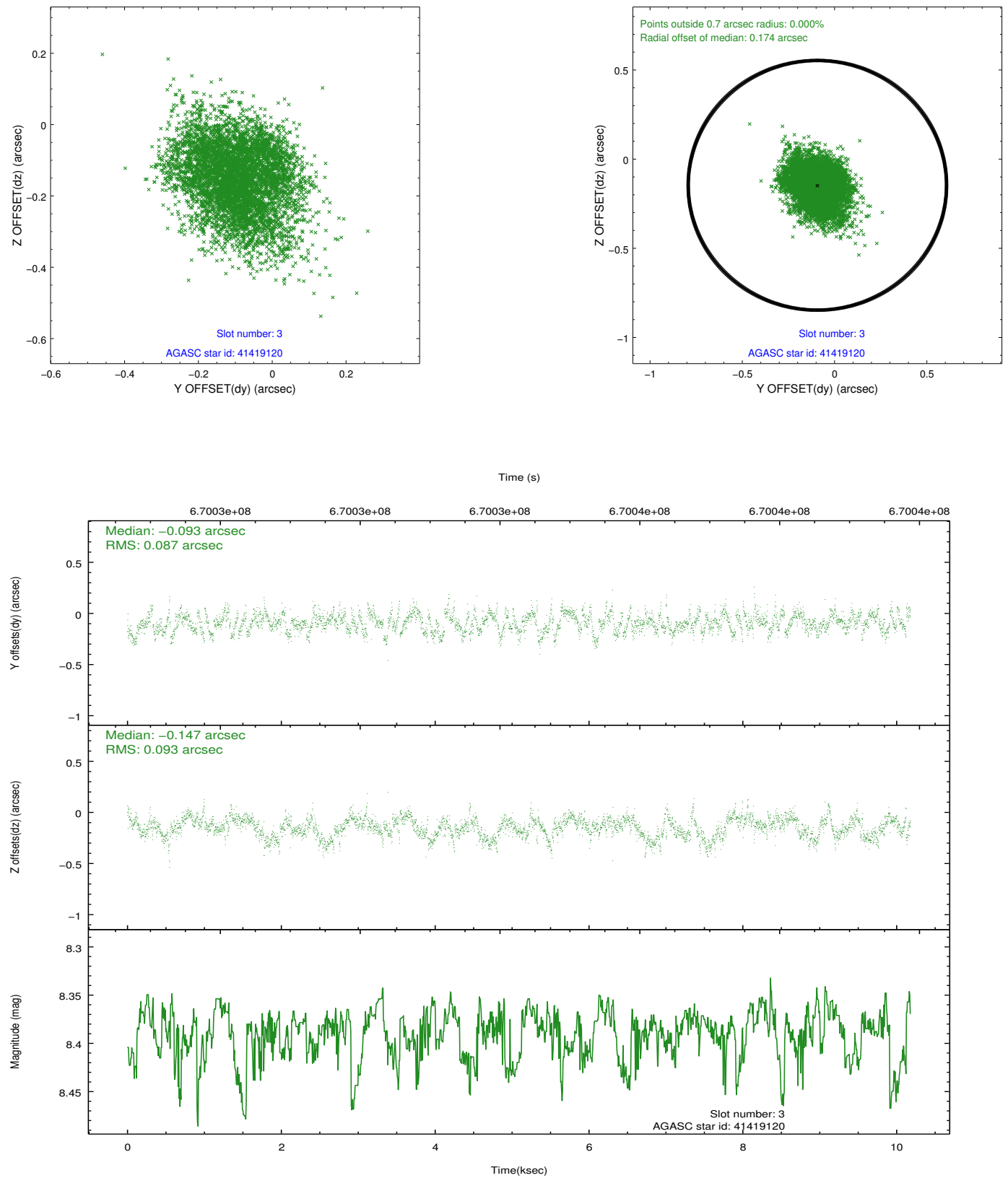


Slot Statistics

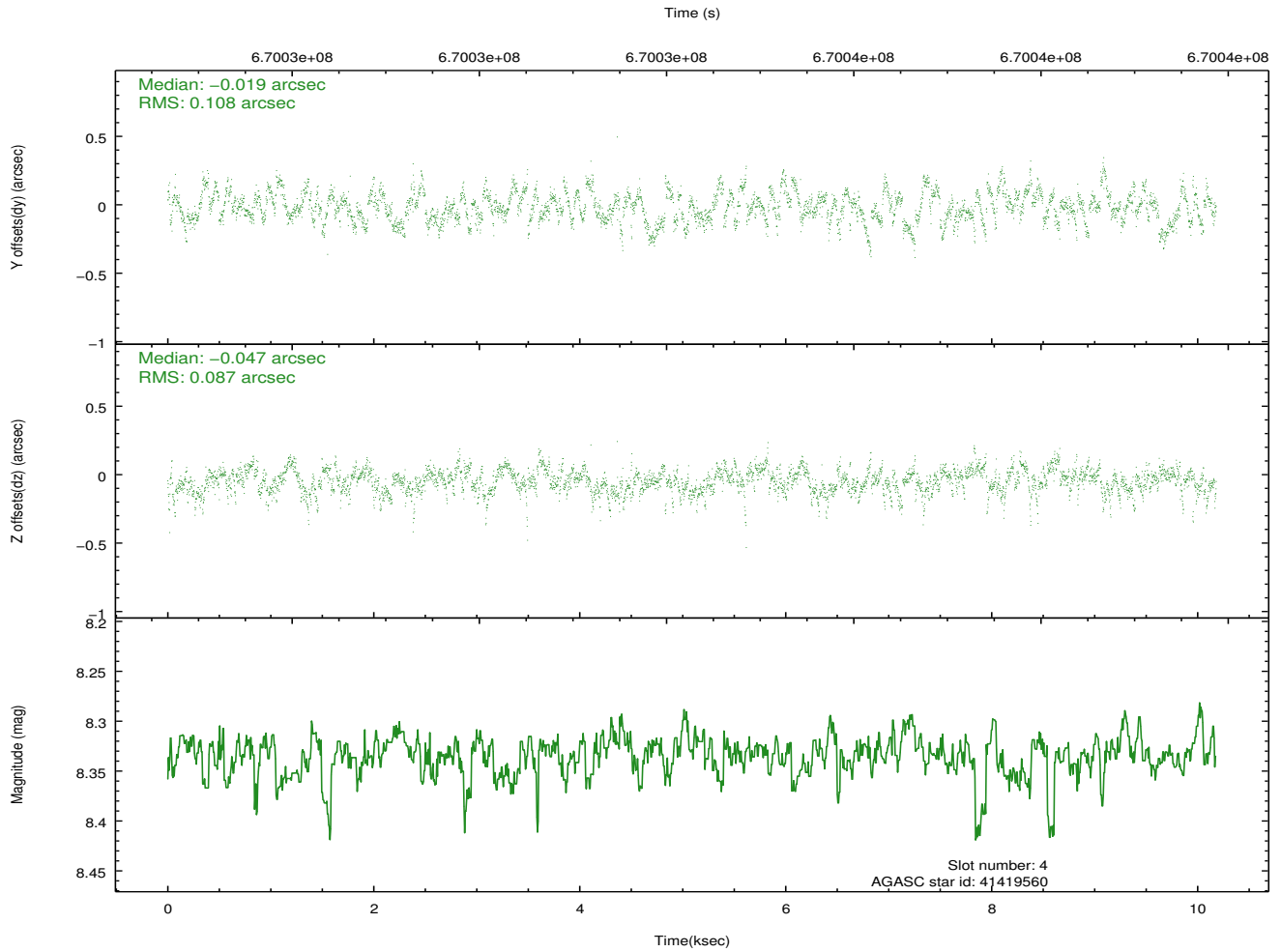
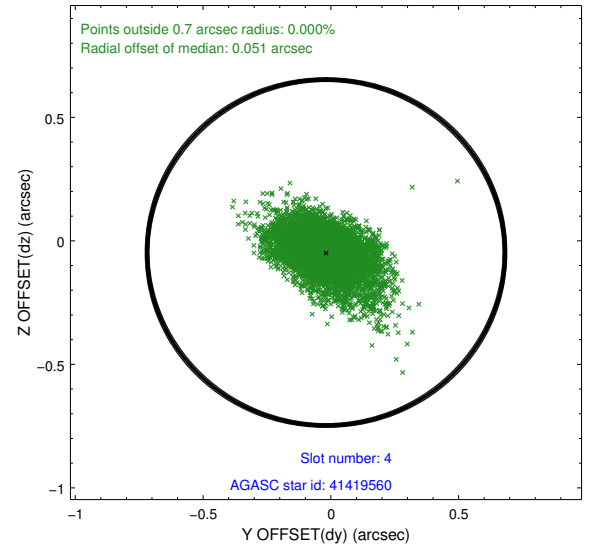
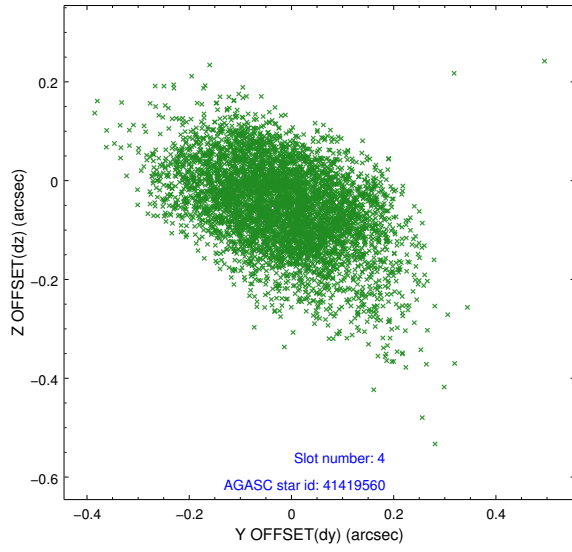
pt	status	used	id	mag	n_pts	frac_pts	med_dy	med_dz	dr1	dr2	ra	dec	mean_y	mea
0	FID		ACIS-I-3	7.44	2483	1.000	-0.084	0.213	0.009	0.016	0.000000	0.000000	42.34	-975
1	FID		ACIS-I-5	7.21	2482	1.000	-0.395	-0.176	0.008	0.014	0.000000	0.000000	-1823.71	1054
2	FID		ACIS-I-6	7.21	2483	1.000	0.388	0.033	0.008	0.014	0.000000	0.000000	390.18	1700
3	GUIDE	used	41419120	8.39	4962	1.000	-0.093	-0.147	0.135	0.215	210.438132	1.741445	2245.87	-1556
4	GUIDE	used	41419560	8.33	4961	1.000	-0.019	-0.047	0.142	0.245	210.564657	1.690479	2004.26	-1984
5	GUIDE	used	41422928	8.94	4964	1.000	-0.184	-0.240	0.158	0.259	210.288545	1.324568	828.79	-825
6	GUIDE	used	41427224	8.80	4962	1.000	0.261	0.017	0.191	0.282	210.354752	1.002502	-351.33	-908
7	GUIDE	used	41428944	9.52	4946	1.000	0.043	0.457	0.229	0.438	210.390300	1.552200	1593.19	-1296

2.4 Star Slots

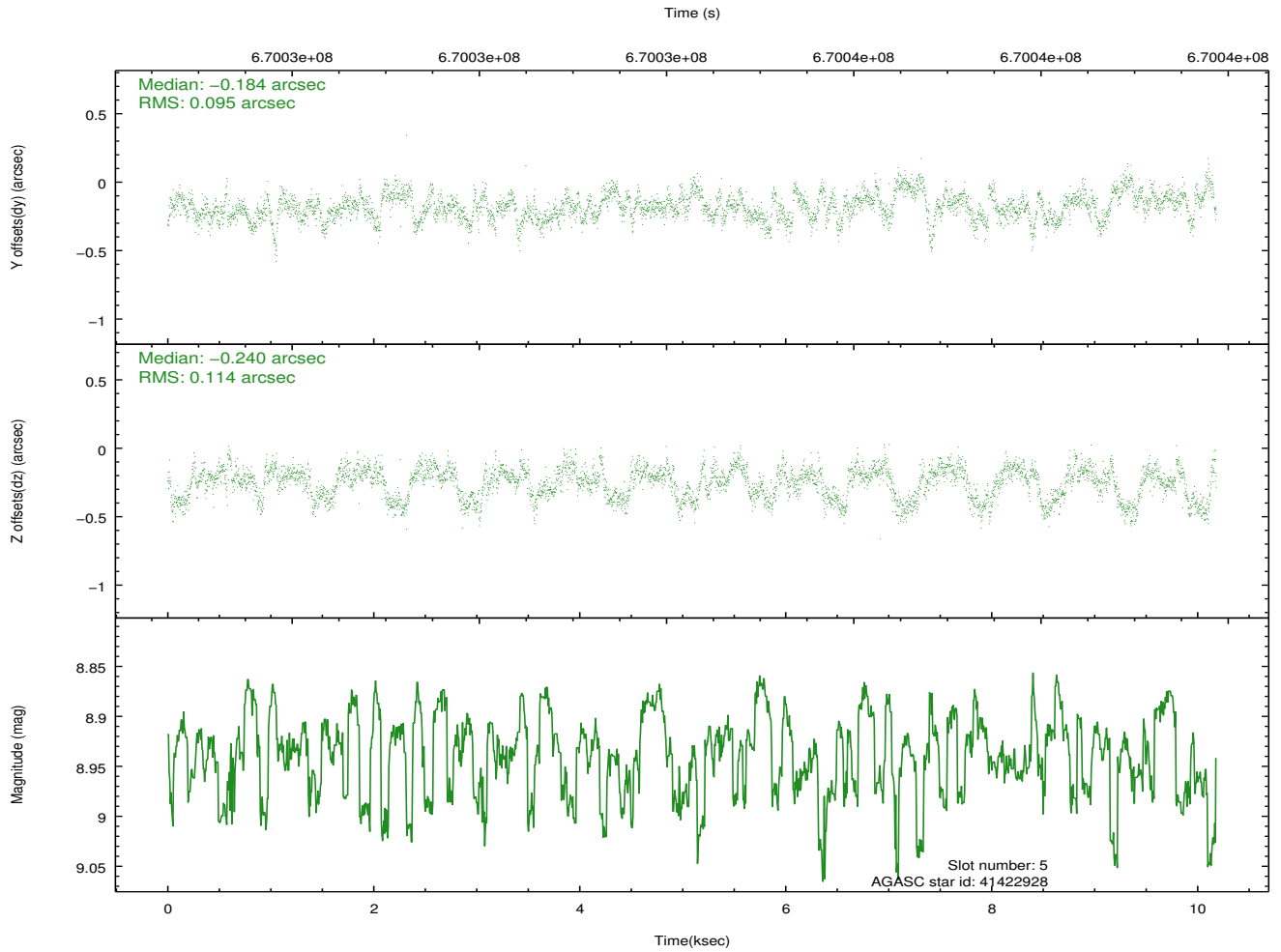
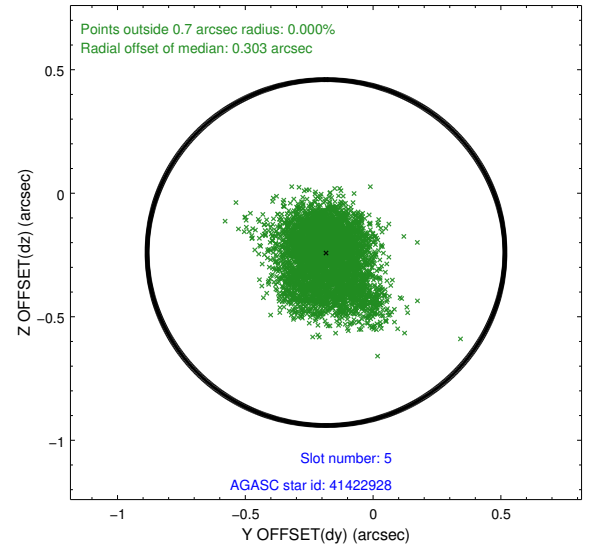
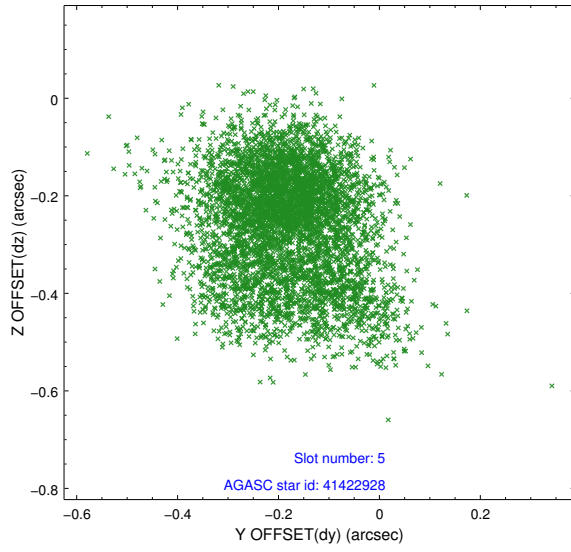
2.4.1 Slot 3



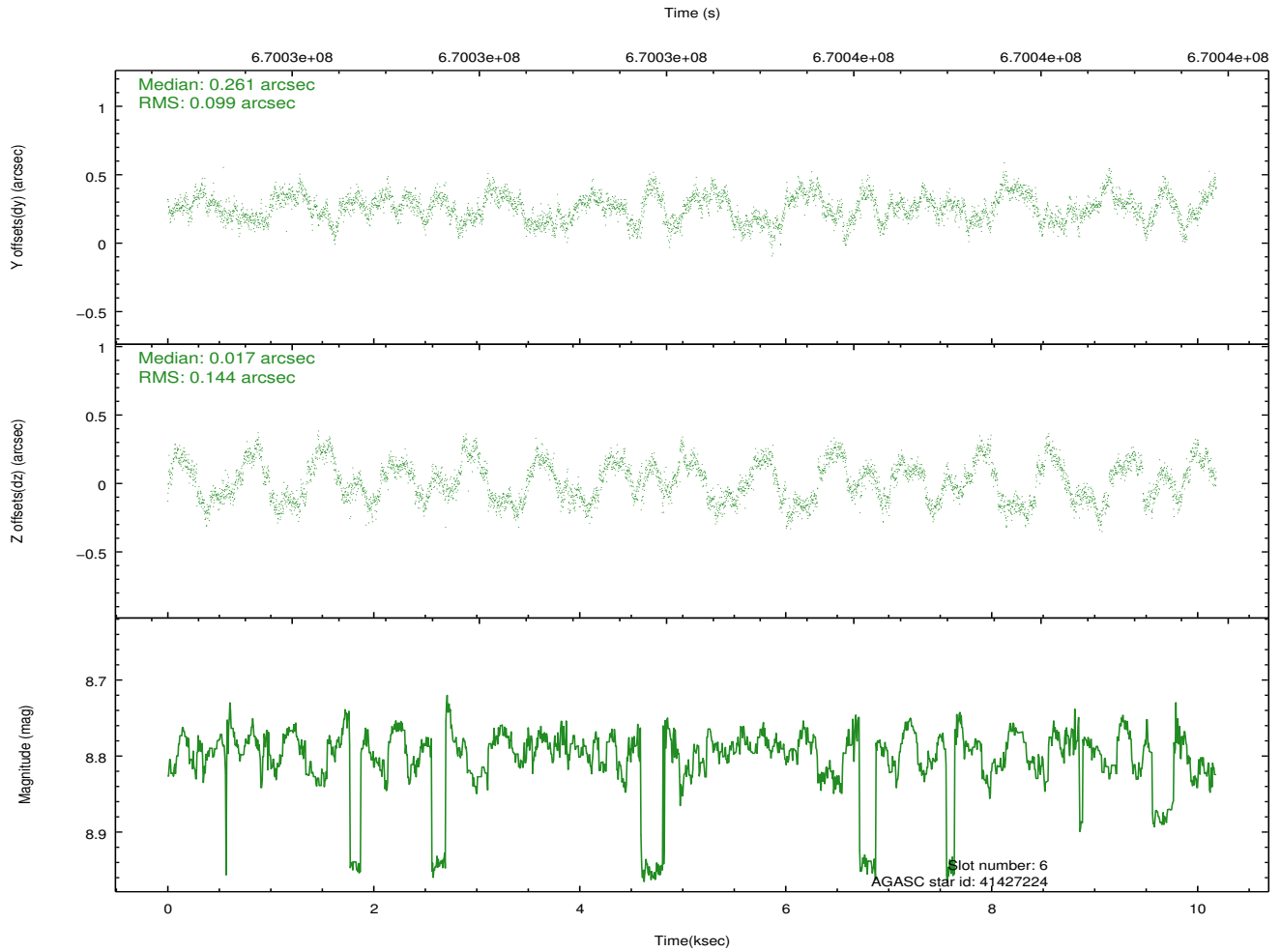
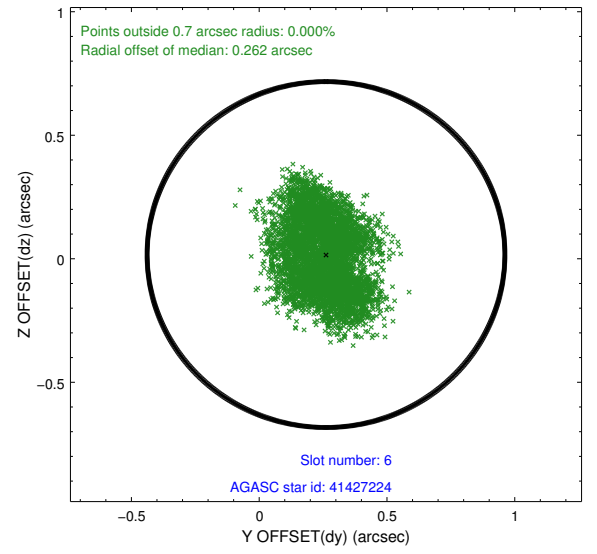
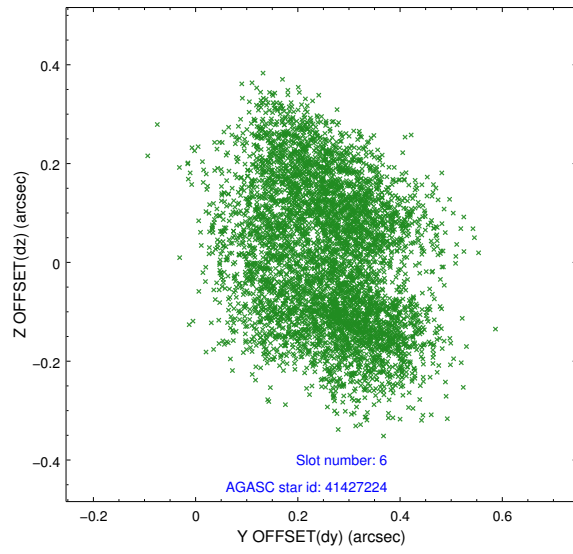
2.4.2 Slot 4



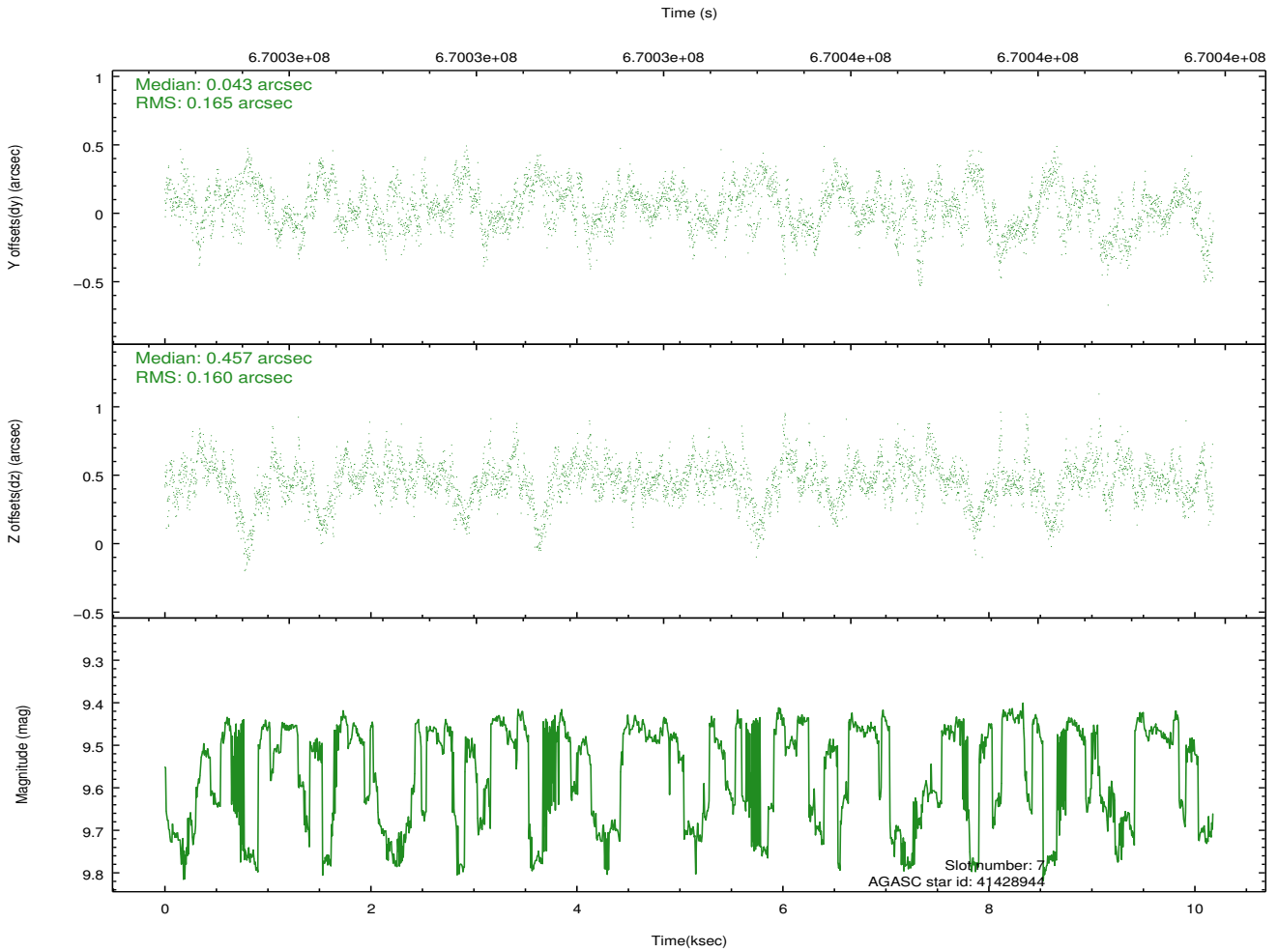
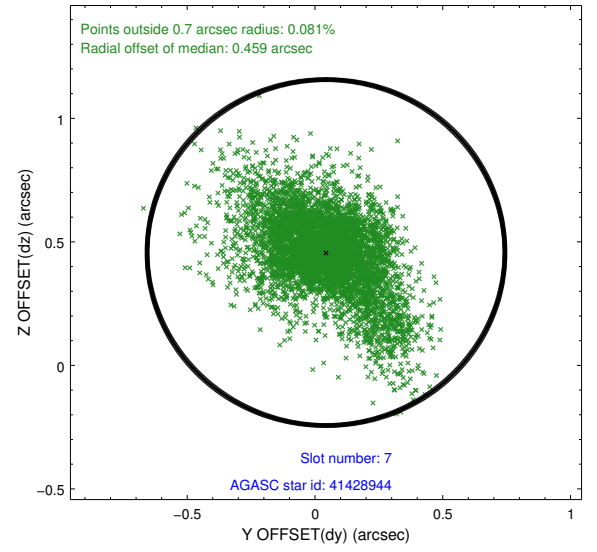
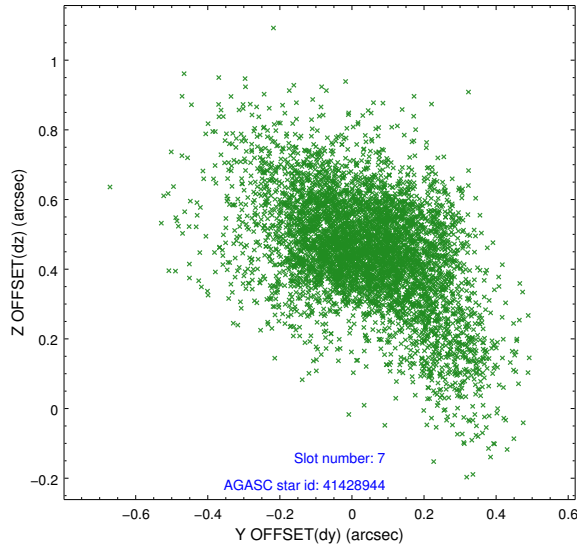
2.4.3 Slot 5



2.4.4 Slot 6

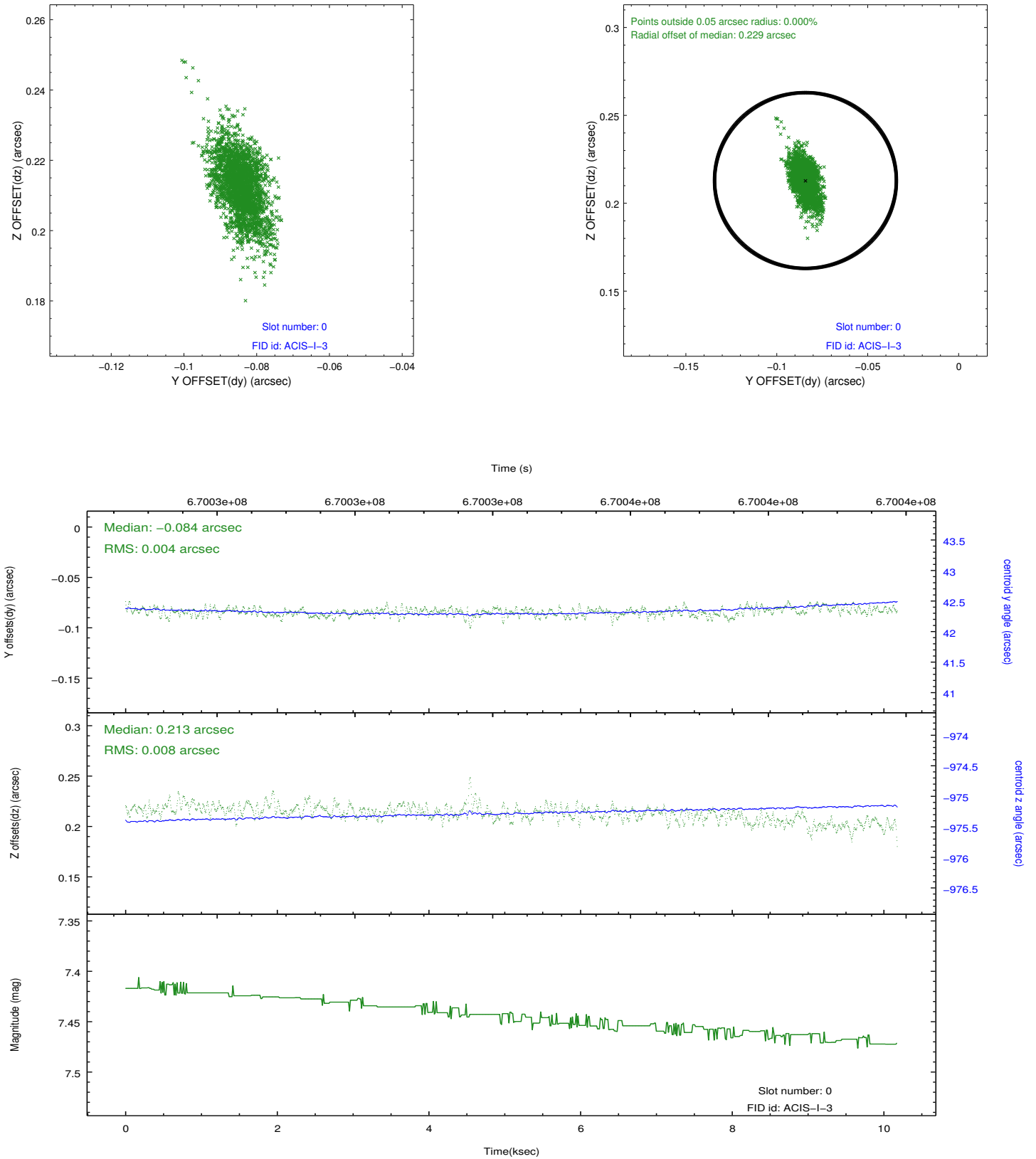


2.4.5 Slot 7

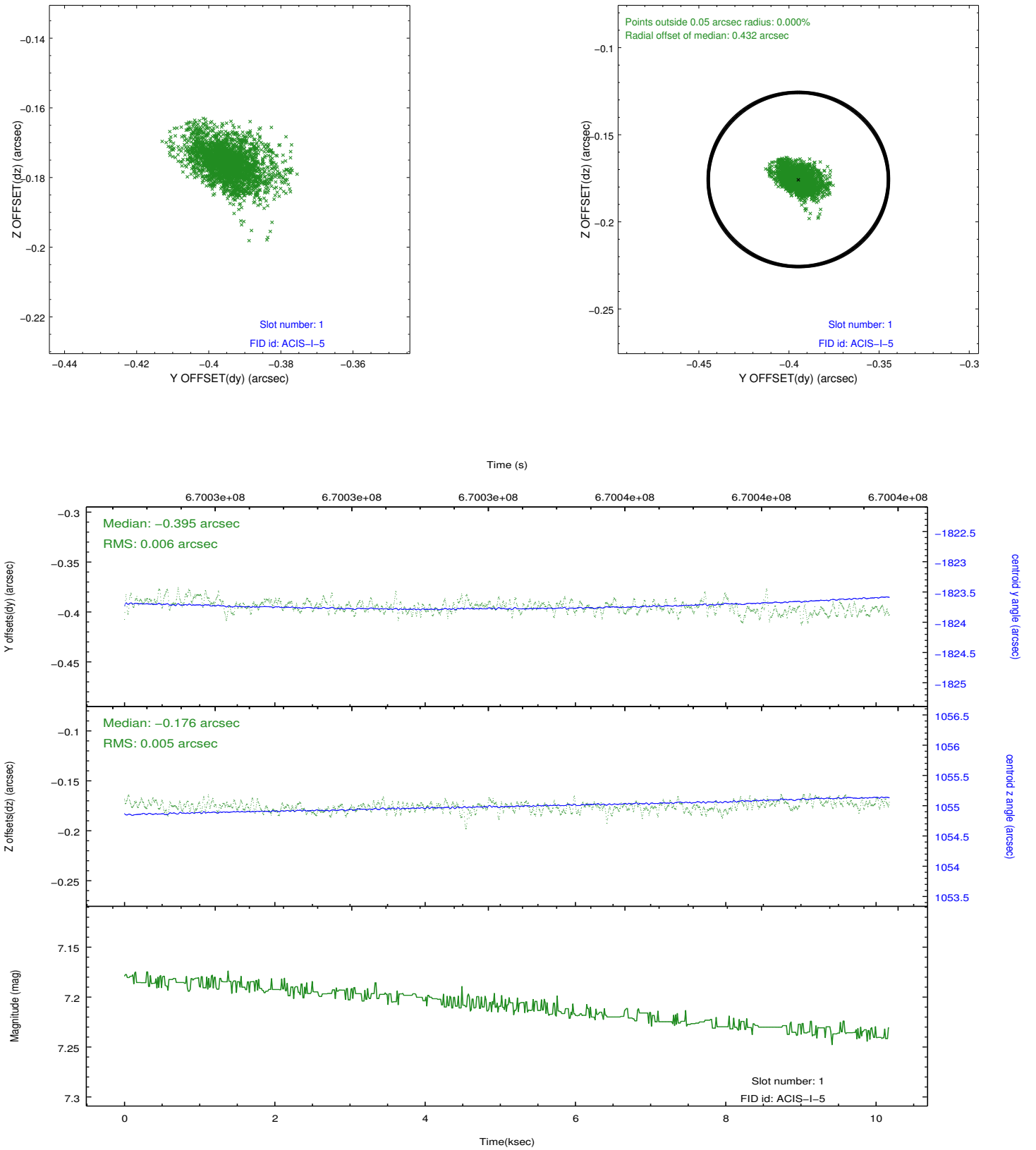


2.5 FID Slots

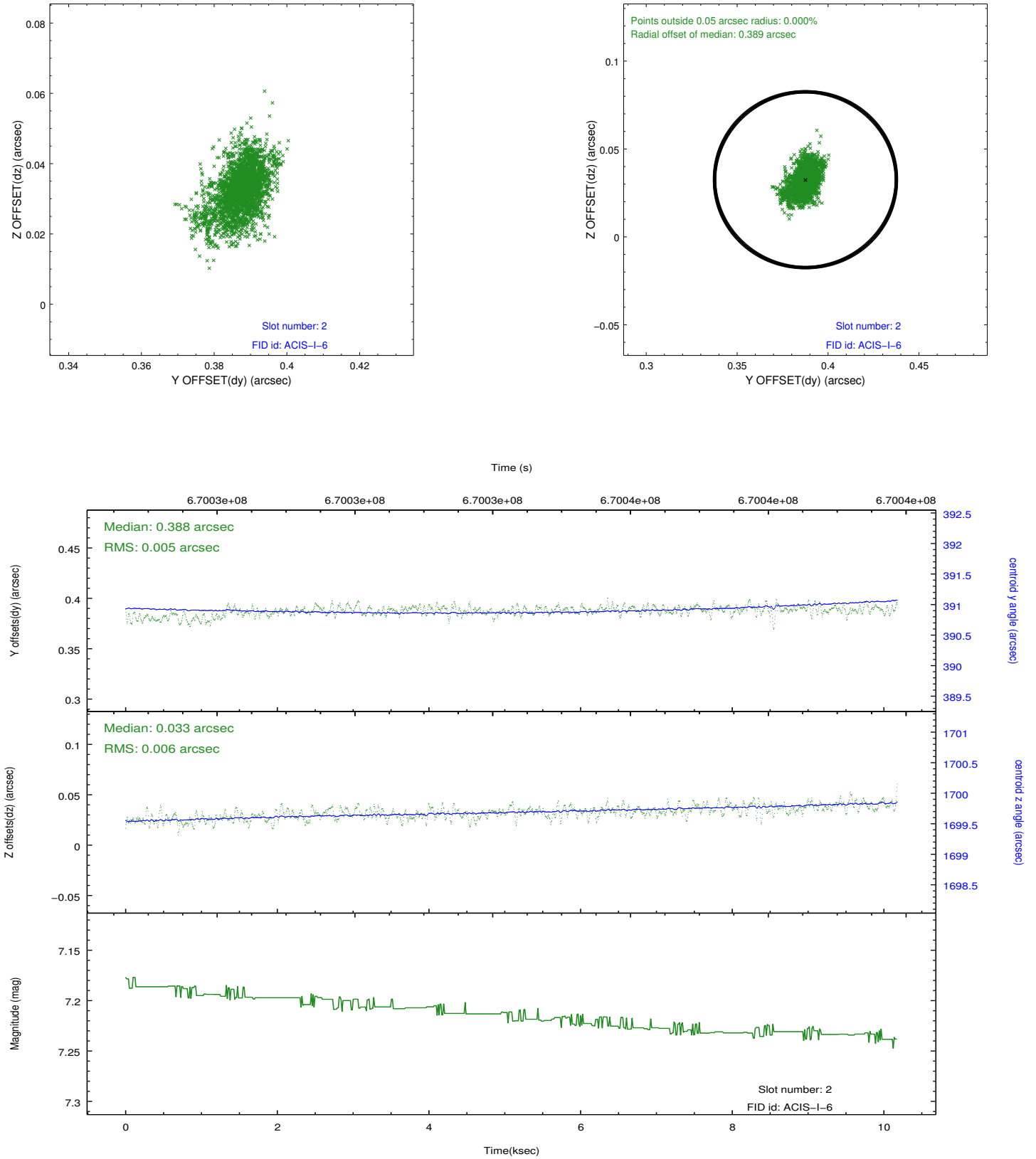
2.5.1 Slot 0



2.5.2 Slot 1



2.5.3 Slot 2



A Summary

A.1 Status

V&V Scientist	Beth Sundheim
V&V Date (YYYY-MM-DD)	2019.03.27
V&V Edition	1
V&V Disposition and Status	OK
V&V Charge Time	10.074613759637

A.2 Comments

Joint proposal with HST.