

# V&V Reference Report

## L2 ASCDS Version : 10.7

Observation 21279 - L2 Version 1  
Chandra X-Ray Center

L2 Processing Date : Nov 7 2018

## Contents

<b>1</b>	<b>Front</b>	<b>2</b>
<b>2</b>	<b>OBI</b>	<b>3</b>
2.1	OBI . . . . .	3
2.1.1	Images . . . . .	3
2.1.2	Bias . . . . .	3
2.1.3	Parameters . . . . .	4
2.1.4	Events . . . . .	4
2.2	Compared Parameters . . . . .	5
2.3	Aspect . . . . .	6
2.4	Star Slots . . . . .	9
2.4.1	Slot 3 . . . . .	9
2.4.2	Slot 4 . . . . .	10
2.4.3	Slot 5 . . . . .	11
2.4.4	Slot 6 . . . . .	12
2.4.5	Slot 7 . . . . .	13
2.5	FID Slots . . . . .	14
2.5.1	Slot 0 . . . . .	14
2.5.2	Slot 1 . . . . .	15
2.5.3	Slot 2 . . . . .	16
<b>A</b>	<b>Summary</b>	<b>17</b>
A.1	Status . . . . .	17
A.2	Comments . . . . .	17

# 1 Front

seq_num	300411	Sequence number
obs_id	21279	Observation id
title	The Mysterious Boundary Layers in High Accretion Rate White Dwarf Binaries	Proposal title
observer	Koji Mukai	Principal investigator
object	V378 Peg	Source name
dtcycle	0	&#160
cycle	P	events from which exps? Prim/Second/Both
ra_targ	355.017917	Observer's specified target RA [deg]
dec_targ	30.2965	Observer's specified target Dec [deg]
ra_nom	355.02250844657	Nominal RA [deg]
dec_nom	30.291983006699	Nominal Dec [deg]
roll_nom	263.15440073713	Nominal Roll [deg]
revision	1	Processing version of data
ontime	14438.462120652	Sum of GTIs [s]
livetime	14249.812983605	Livetime [s]
ontime3	14435.238970518	Sum of GTIs [s]
ontime6	14438.421080709	Sum of GTIs [s]
ontime7	14438.462120652	Sum of GTIs [s]
ontime8	14438.339000702	Sum of GTIs [s]
l2events	93303	Number of level 2 events

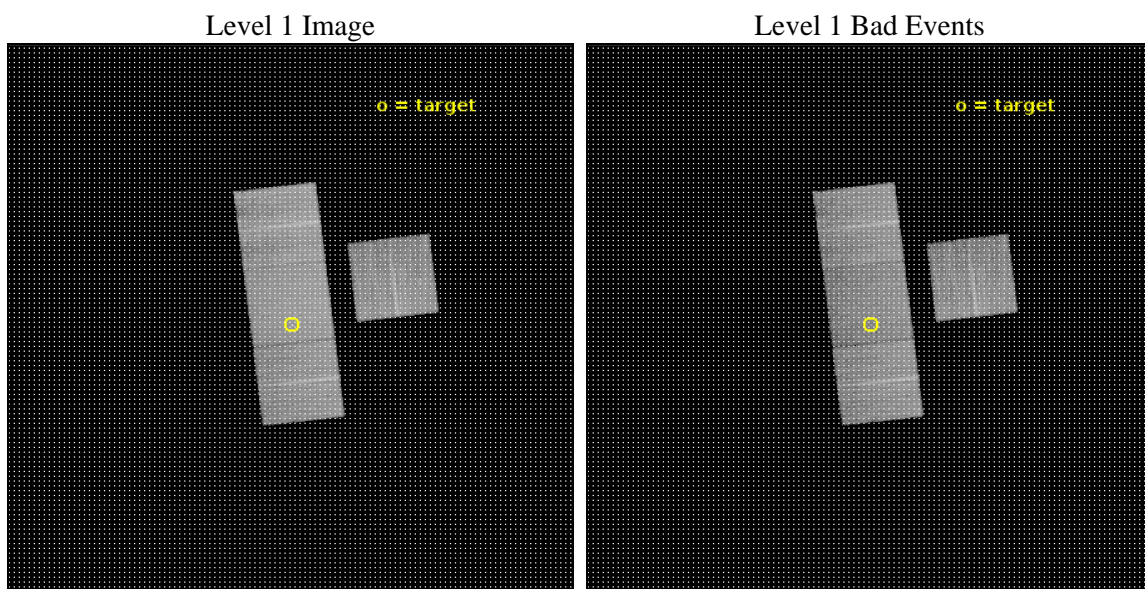




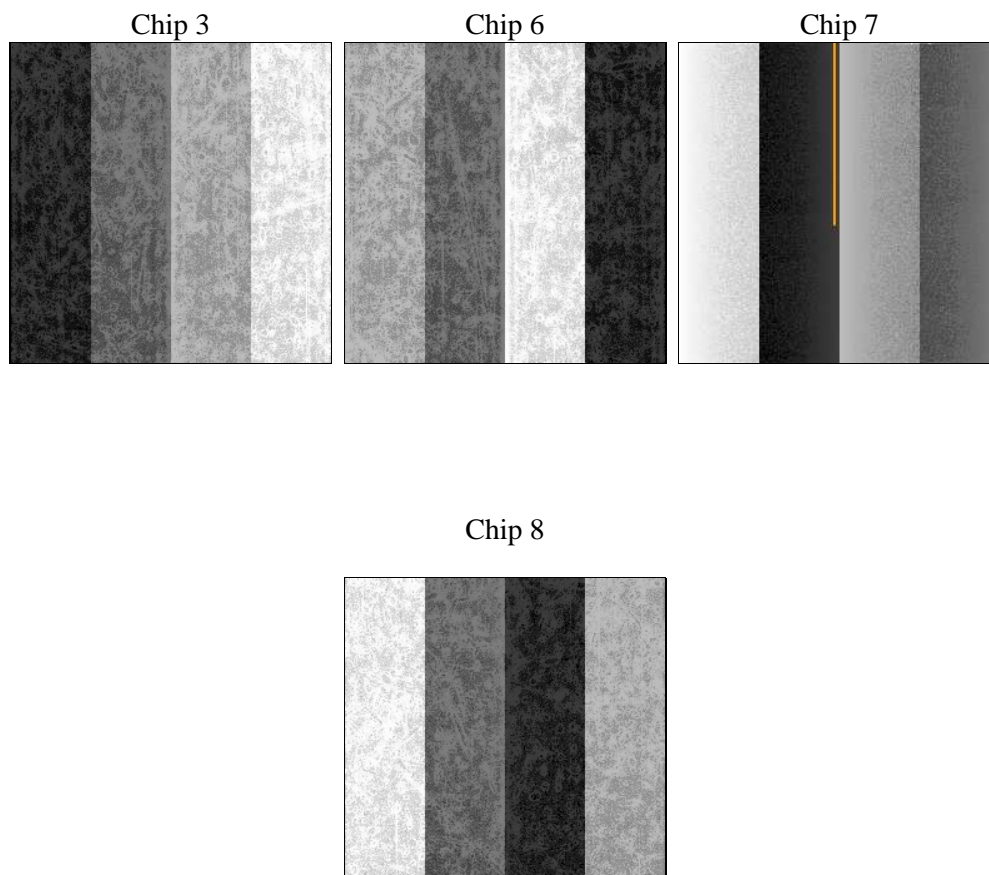
## 2 OBI

### 2.1 OBI

#### 2.1.1 Images



#### 2.1.2 Bias



### 2.1.3 Parameters

obi_num	0	Obi number	sched_exp_time	14375.262000	[s] Scheduled observation exposure time
ascdsver	10.7	Processing system revision	ontime	14438.462120652	Sum of GTIs [s]
caldsver	4.8.0.1	&#160	ontime3	14435.238970518	Sum of GTIs [s]
date	2018-11-08T02:17:55	Date and time of file creation	ontime6	14438.421080709	Sum of GTIs [s]
revision	1	Processing version of data	ontime7	14438.462120652	Sum of GTIs [s]
			ontime8	14438.339000702	Sum of GTIs [s]
			l1events	514953	Number of level 1 events

### 2.1.4 Events

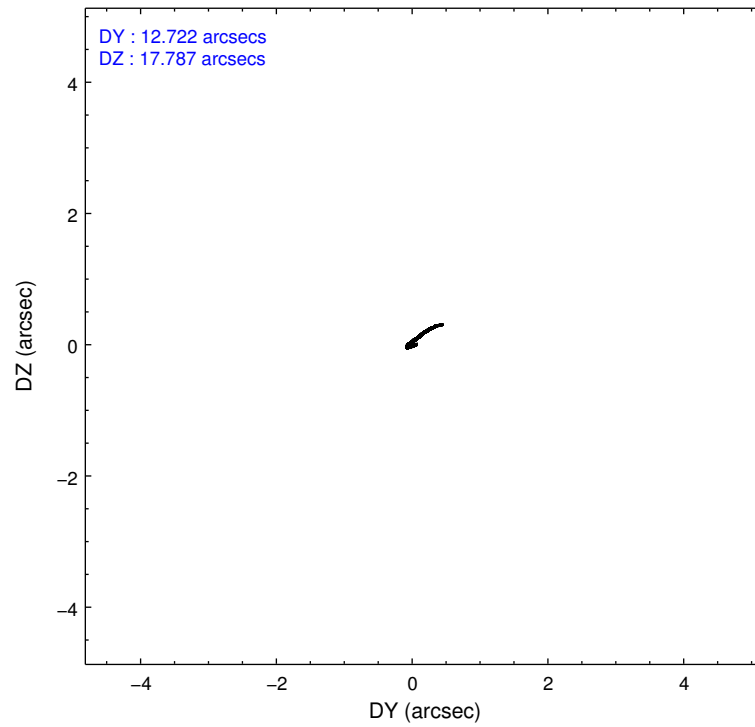
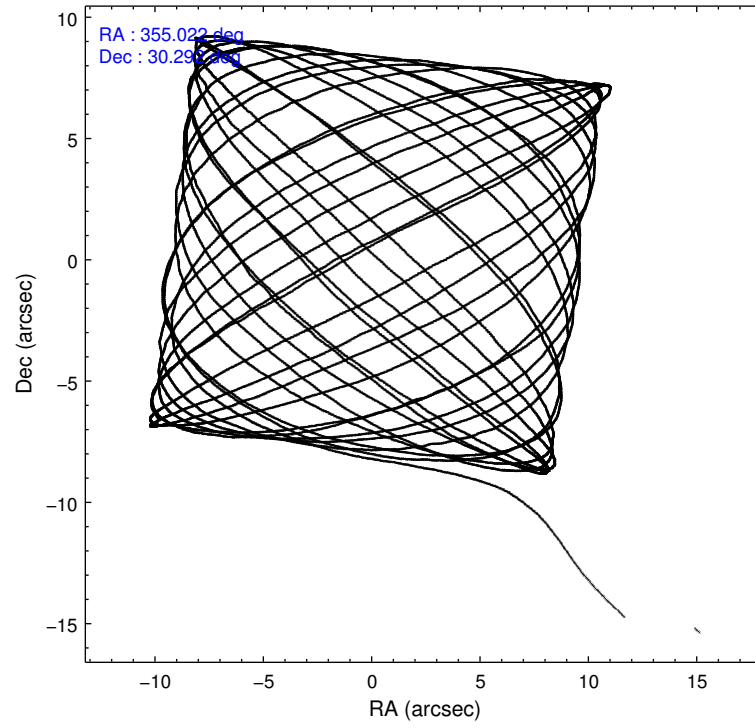
	ccd 3	ccd 6	ccd 7	ccd 8
level 1 events	108948	118481	143120	144404
rejected events	97926	106233	81190	109072
rejected %	89%	89%	56%	75%

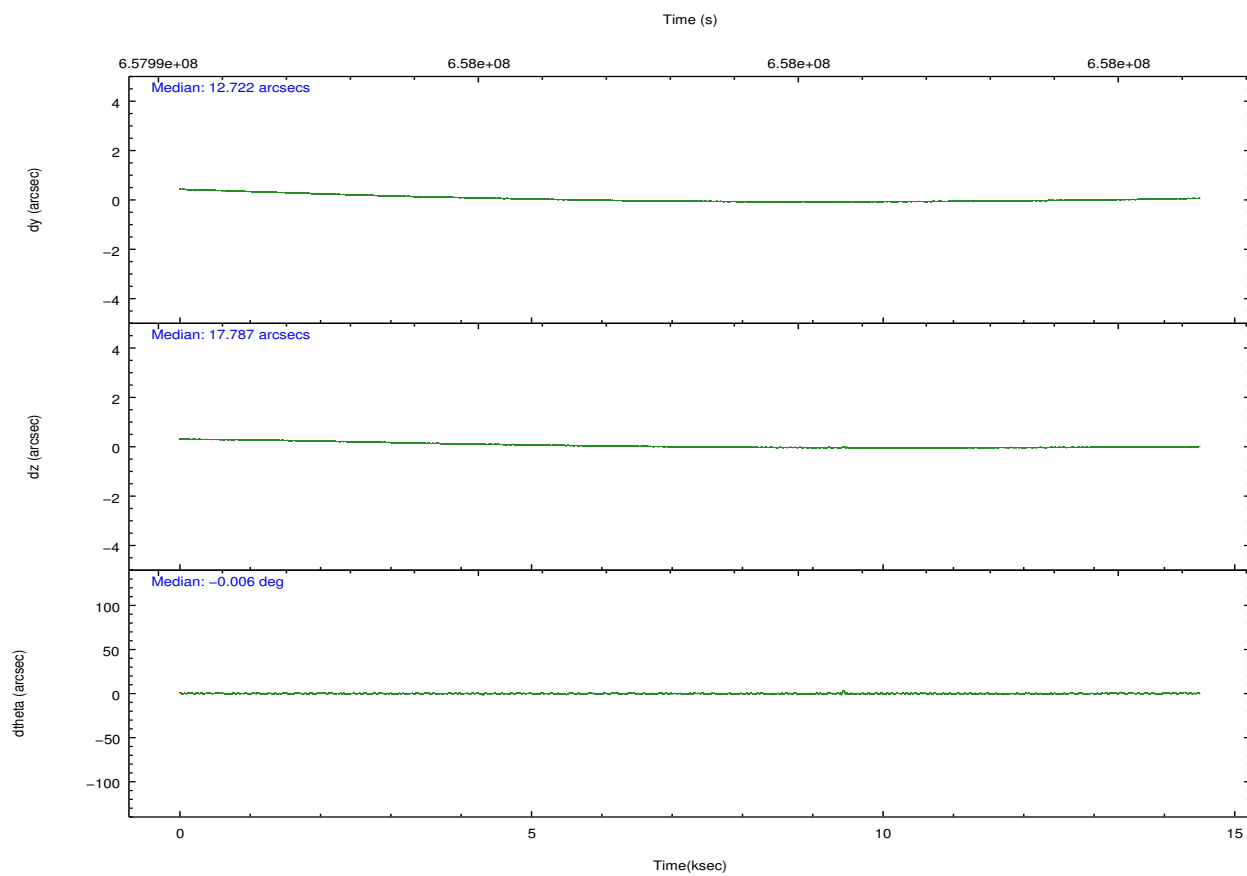
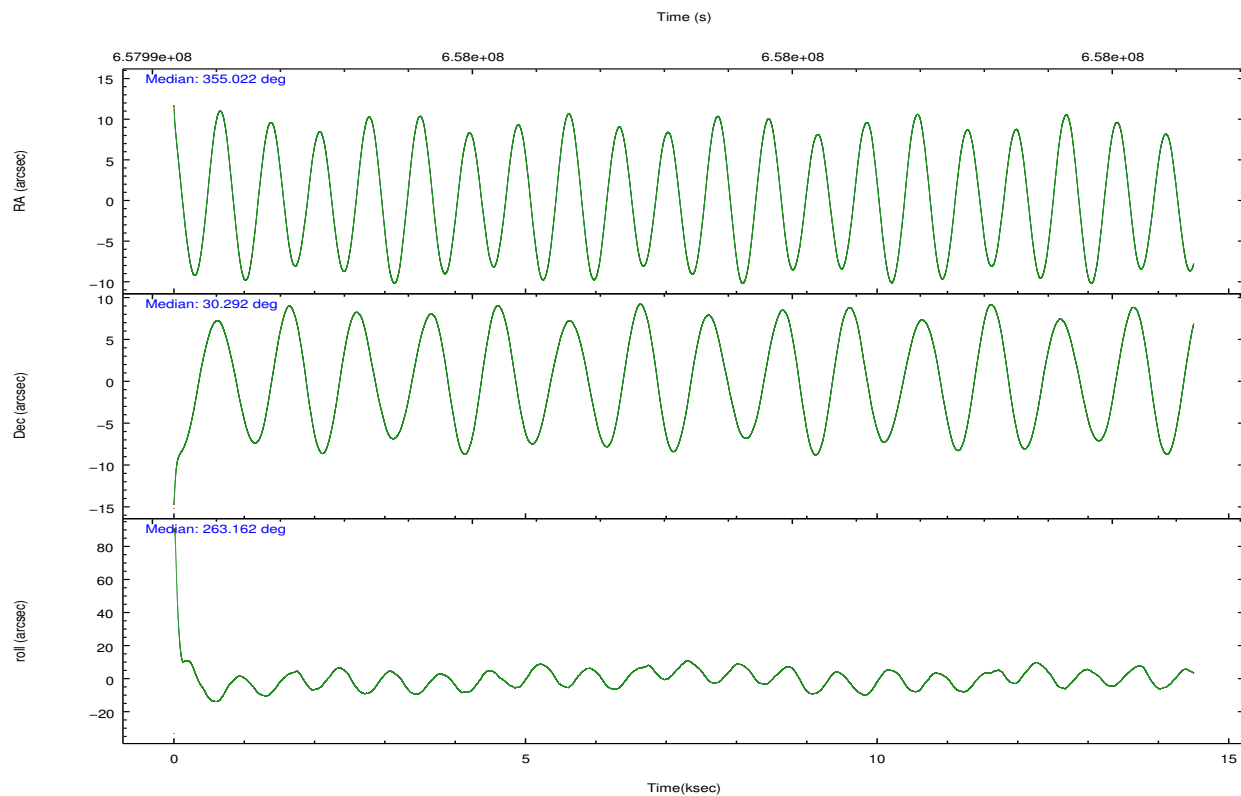
	ccd 3	ccd 6	ccd 7	ccd 8
grade 0 events	3853	3394	5197	9575
	3%	2%	3%	6%
grade 1 events	57	56	218	98
	0%	0%	0%	0%
grade 2 events	2426	3465	12644	8898
	2%	2%	8%	6%
grade 3 events	1072	972	4870	3574
	0%	0%	3%	2%
grade 4 events	1116	951	4783	3362
	1%	0%	3%	2%
grade 5 events	4736	4419	13623	7315
	4%	3%	9%	5%
grade 6 events	2557	3475	34450	9931
	2%	2%	24%	6%
grade 7 events	93131	101749	67335	101651
	85%	85%	47%	70%

## 2.2 Compared Parameters

Parameter	Planned	Actual	Parameter	Planned	Actual
Instrument	ACIS	ACIS	Obspar format version number	7	7
Detector	ACIS-3678	ACIS-3678	Obspar file type	PREDICTED	ACTUAL
Grating	NONE	NONE	Obspar update status	NONE	UPDATED
Data mode	FAINT	FAINT	CCD I0 on	N	N
Observation mode	POINTING	POINTING	CCD I1 on	N	N
[deg] Pointing RA	355.009631	355.0225084465698	CCD I2 on	O1	N
[deg] Pointing Dec	30.317109	30.29198300669947	CCD I3 on	Y	Y
[deg] Pointing Roll	263.004182	263.1544007371318	CCD S0 on	N	N
[mm] SIM focus pos	-0.684267	-0.6828225247311905	CCD S1 on	N	N
[mm] SIM defocus	0	0.001444936568705701	CCD S2 on	Y	Y
[mm] SIM translation stage pos	-190.132523	-190.1425803651734	CCD S3 on	Y	Y
[mm] SIM translation stage offset	0	0.01005778216563158	CCD S4 on	Y	Y
[s] Observation start time (MET)	657991169.184000	657990330.89468	CCD S5 on	N	N
Observation start date	2018-11-07T15:18:20	2018-11-07T15:05:30	Number of optional ACIS chips dropped	1	1
[s] Observation end time (MET)	658005544.184000	658006131.78312	On-chip summing requested	N	N
Observation end date	2018-11-07T19:17:55	2018-11-07T19:28:51	Subarray requested	NONE	NONE
Read mode	TIMED	TIMED	Alternating exposures requested	N	N
			[s] Primary exposure time	0.000000	3.1

## 2.3 Aspect



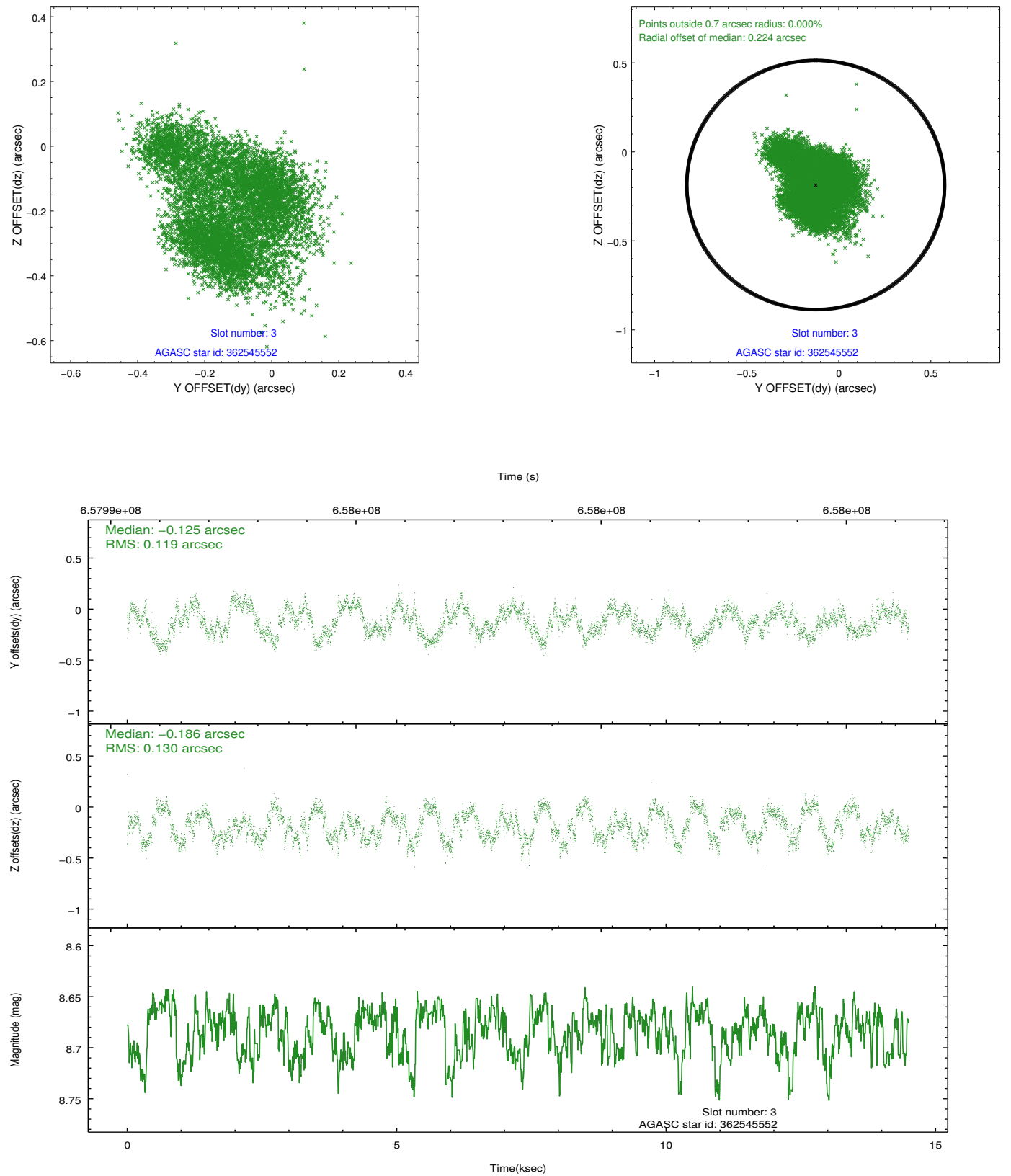


Slot Statistics

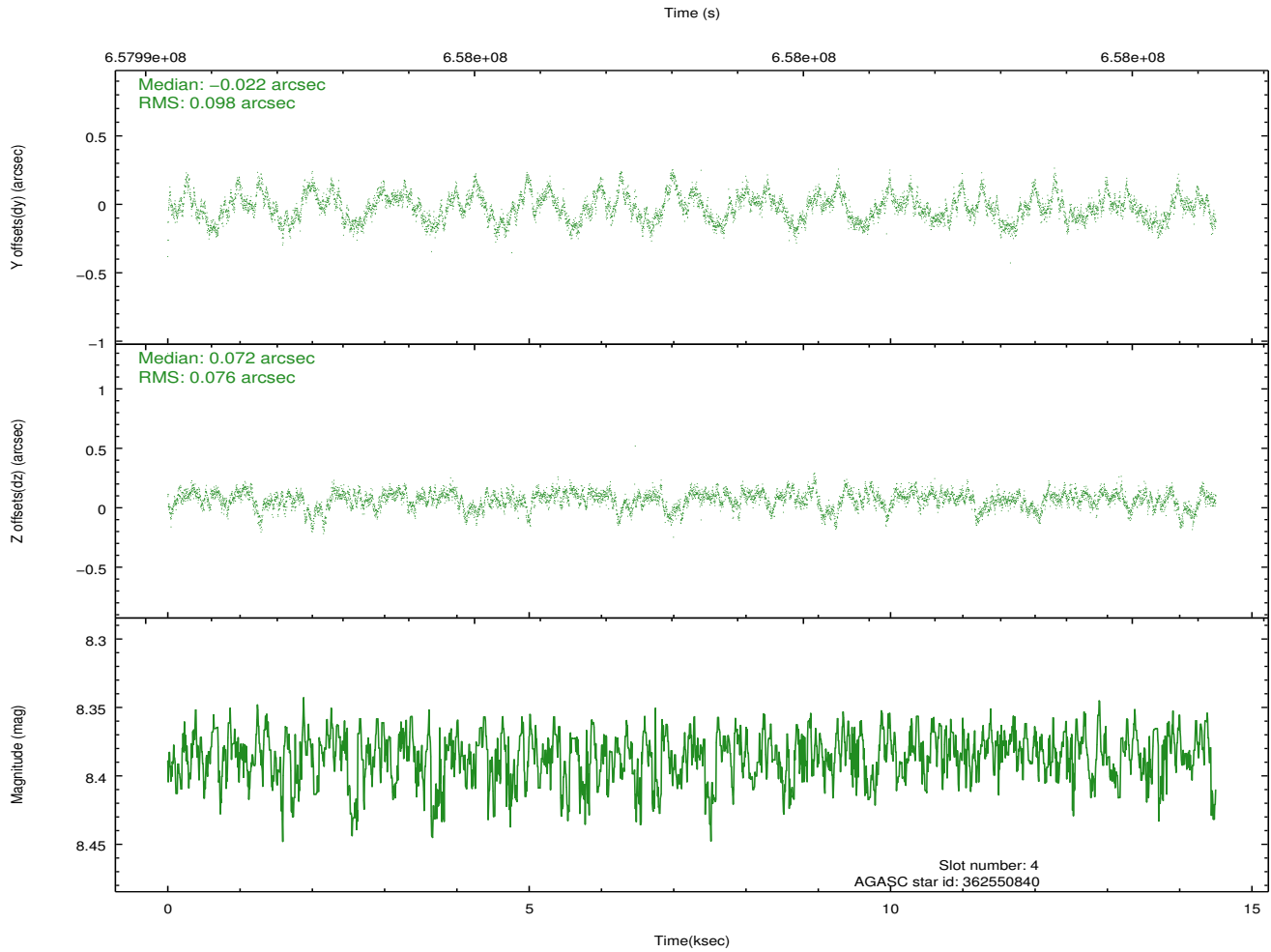
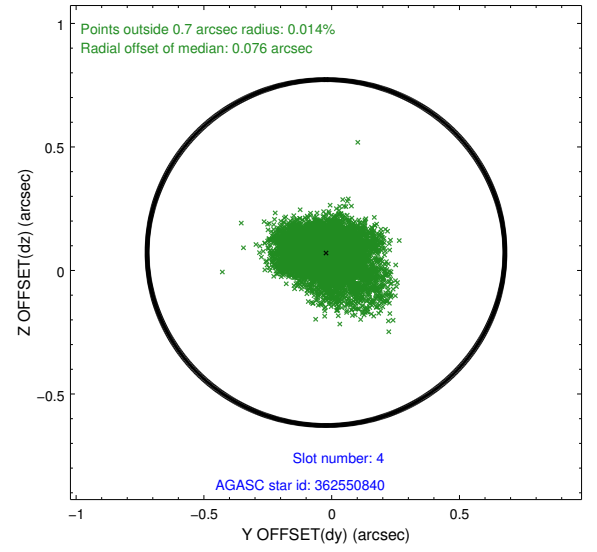
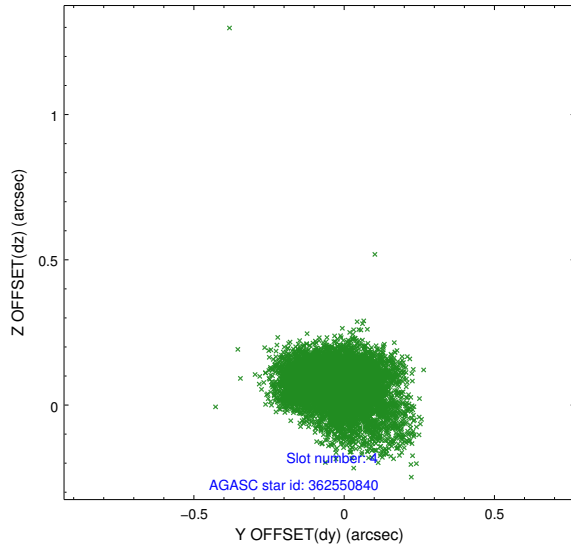
pt	status	used	id	mag	n_pts	frac_pts	med_dy	med_dz	dr1	dr2	ra	dec	mean_y	mea
0	FID		ACIS-S-2	7.15	3538	1.000	-0.258	-0.250	0.008	0.014	0.000000	0.000000	-765.88	-1739
1	FID		ACIS-S-4	7.29	3537	1.000	0.772	0.191	0.008	0.016	0.000000	0.000000	2148.22	169
2	FID		ACIS-S-5	7.26	3538	1.000	-0.546	0.067	0.008	0.015	0.000000	0.000000	-1818.67	162
3	GUIDE	used	362545552	8.68	7065	1.000	-0.125	-0.186	0.189	0.286	354.723091	30.059556	1029.79	-772
4	GUIDE	used	362550840	8.38	7071	1.000	-0.022	0.072	0.131	0.212	354.789180	30.869288	-1889.58	-915
5	GUIDE	used	362546496	8.93	7066	1.000	0.008	0.005	0.236	0.498	354.310872	30.029761	1286.65	-2034
6	GUIDE	used	362550920	7.32	7073	1.000	0.222	0.058	0.102	0.181	354.277626	30.678026	-1021.59	-2404
7	GUIDE	used	362550960	9.17	7062	1.000	-0.065	0.045	0.169	0.264	354.868058	30.603503	-969.18	-559

## 2.4 Star Slots

### 2.4.1 Slot 3

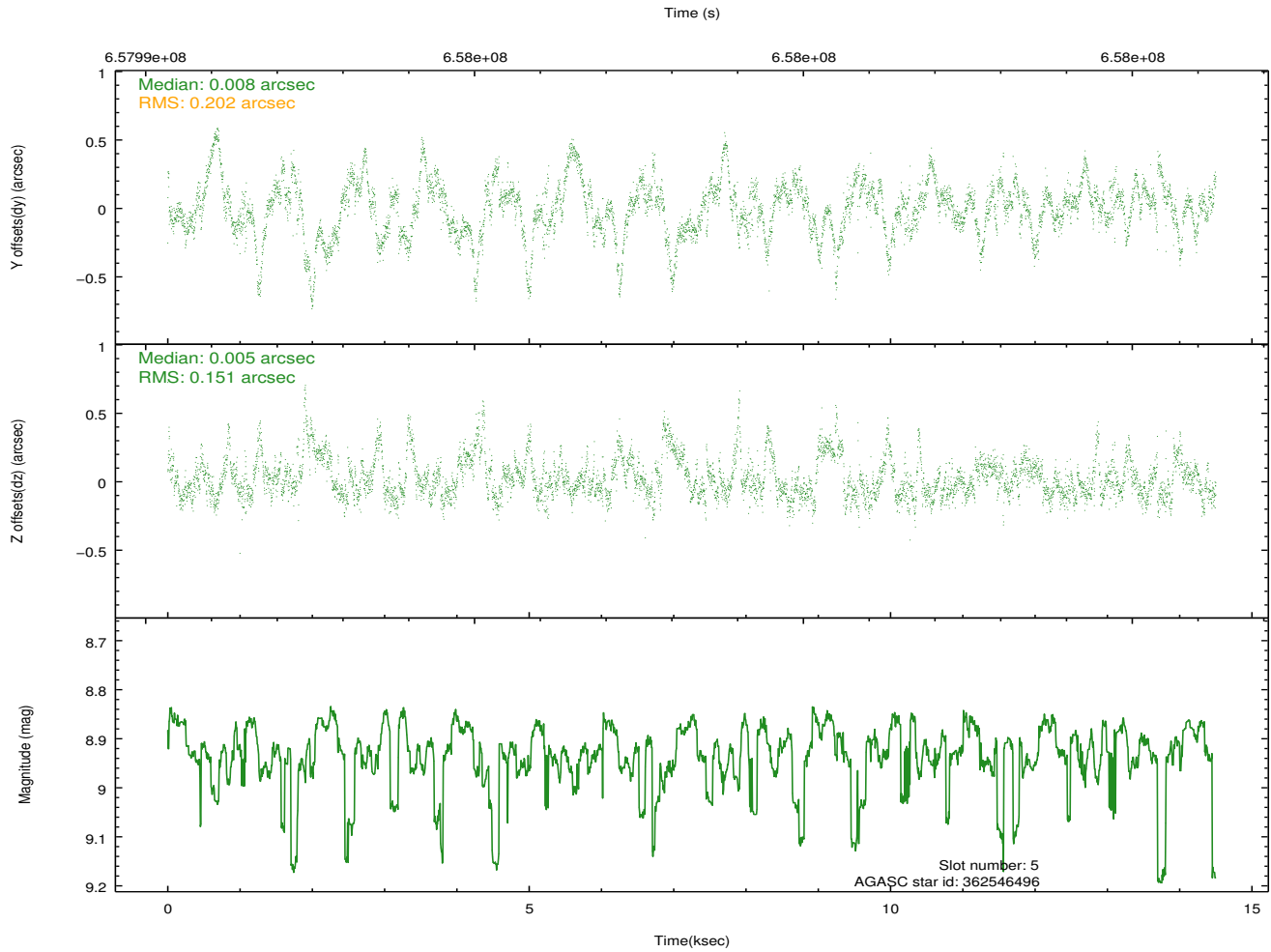
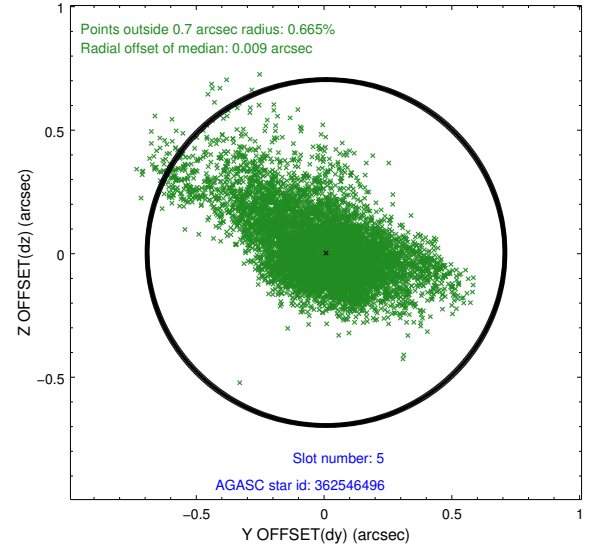
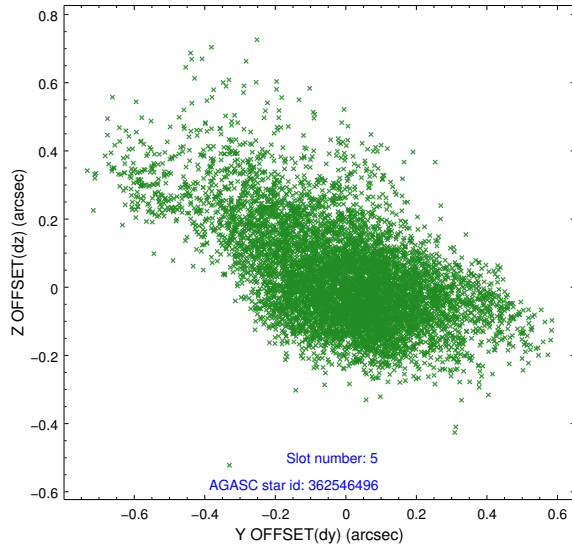


## 2.4.2 Slot 4

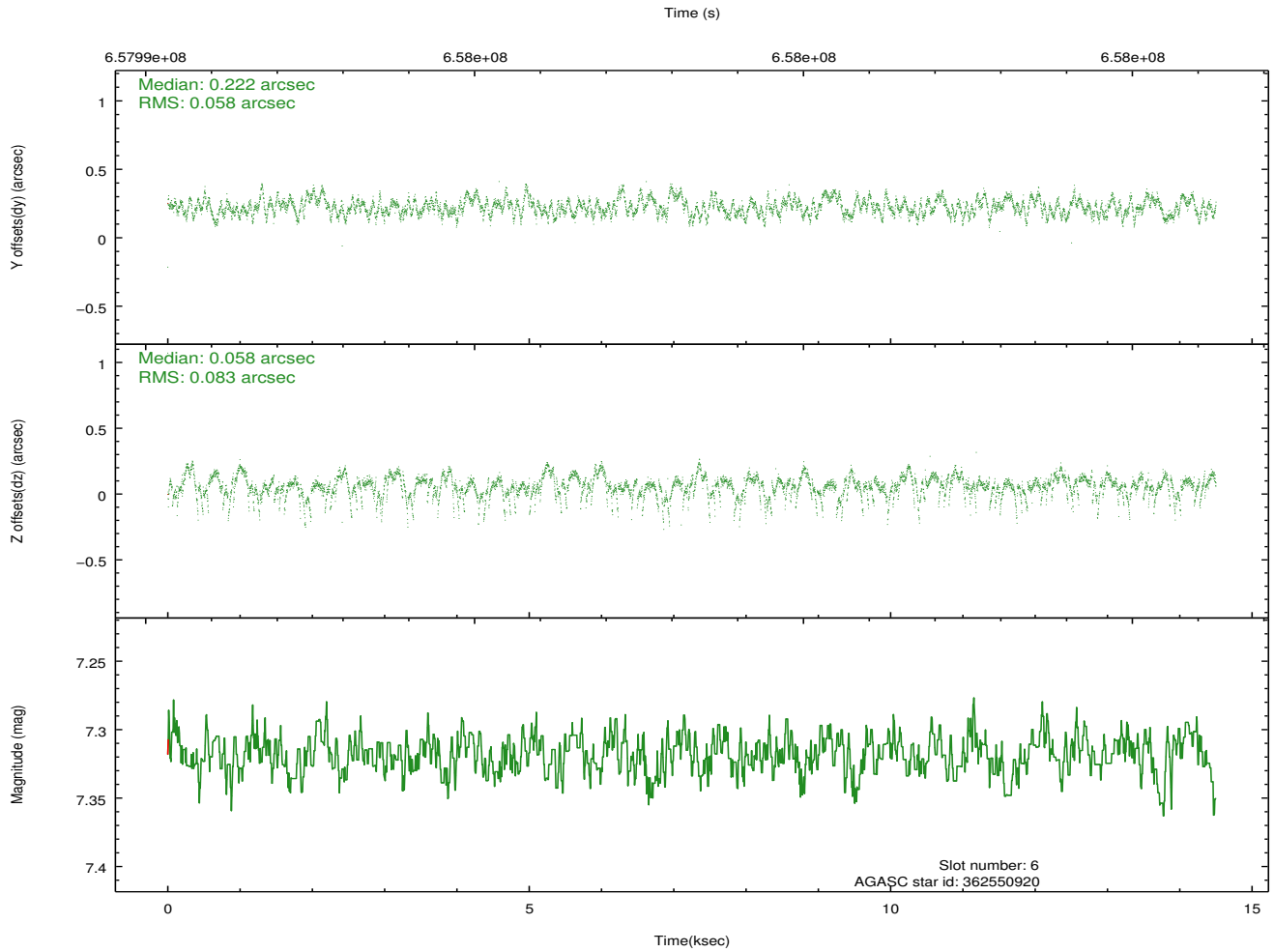
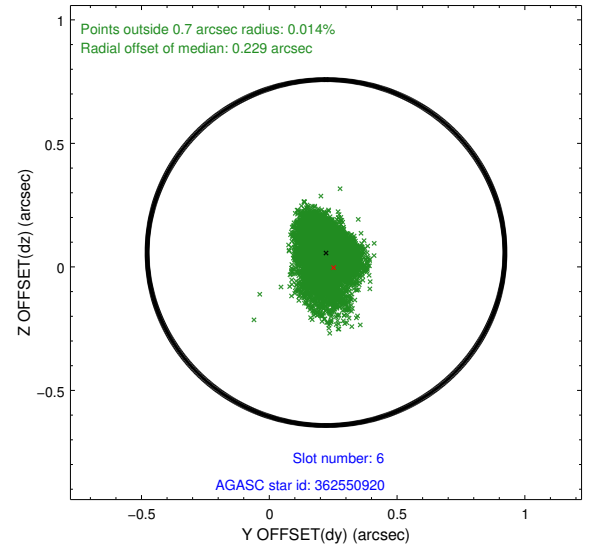
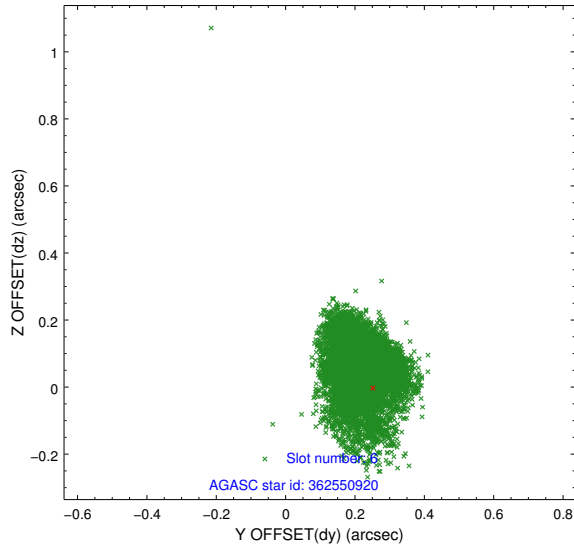




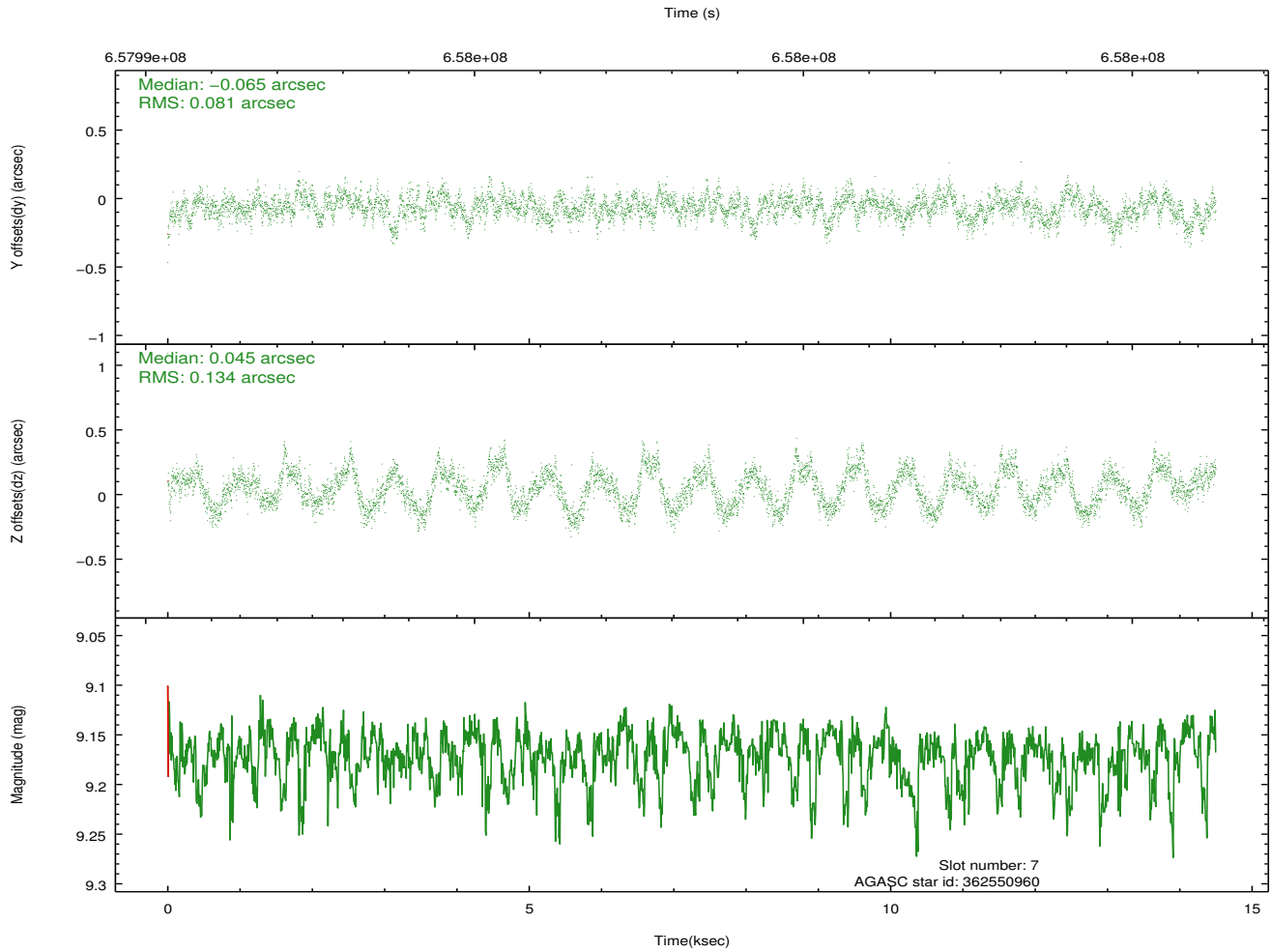
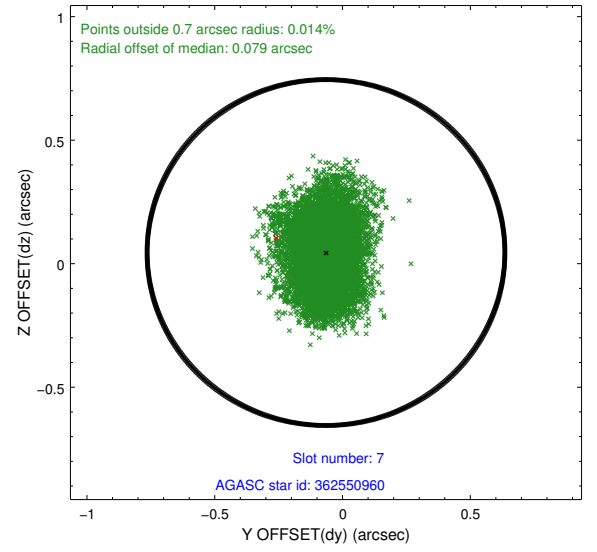
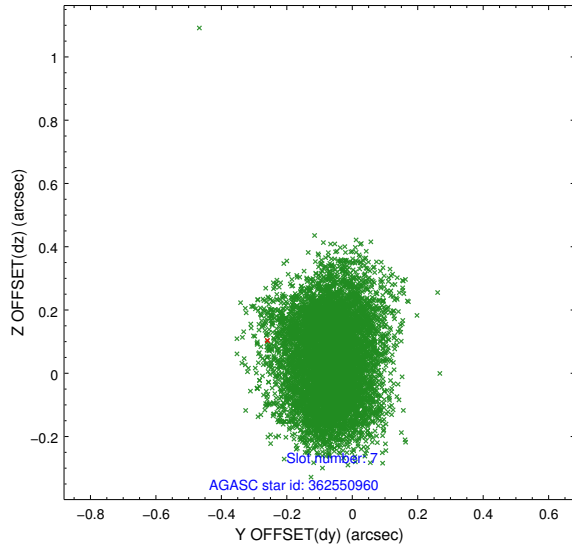
### 2.4.3 Slot 5



## 2.4.4 Slot 6

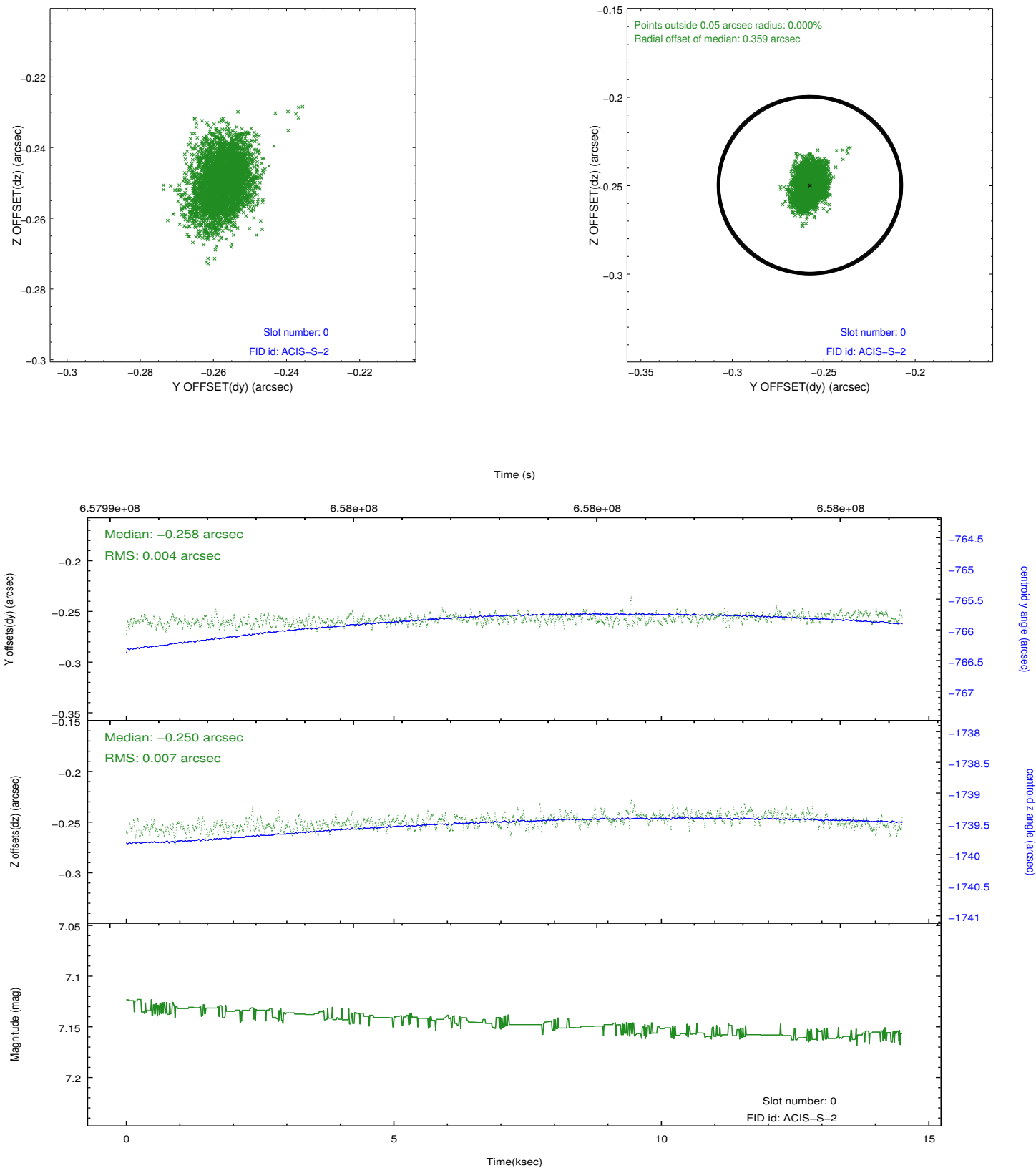


## 2.4.5 Slot 7

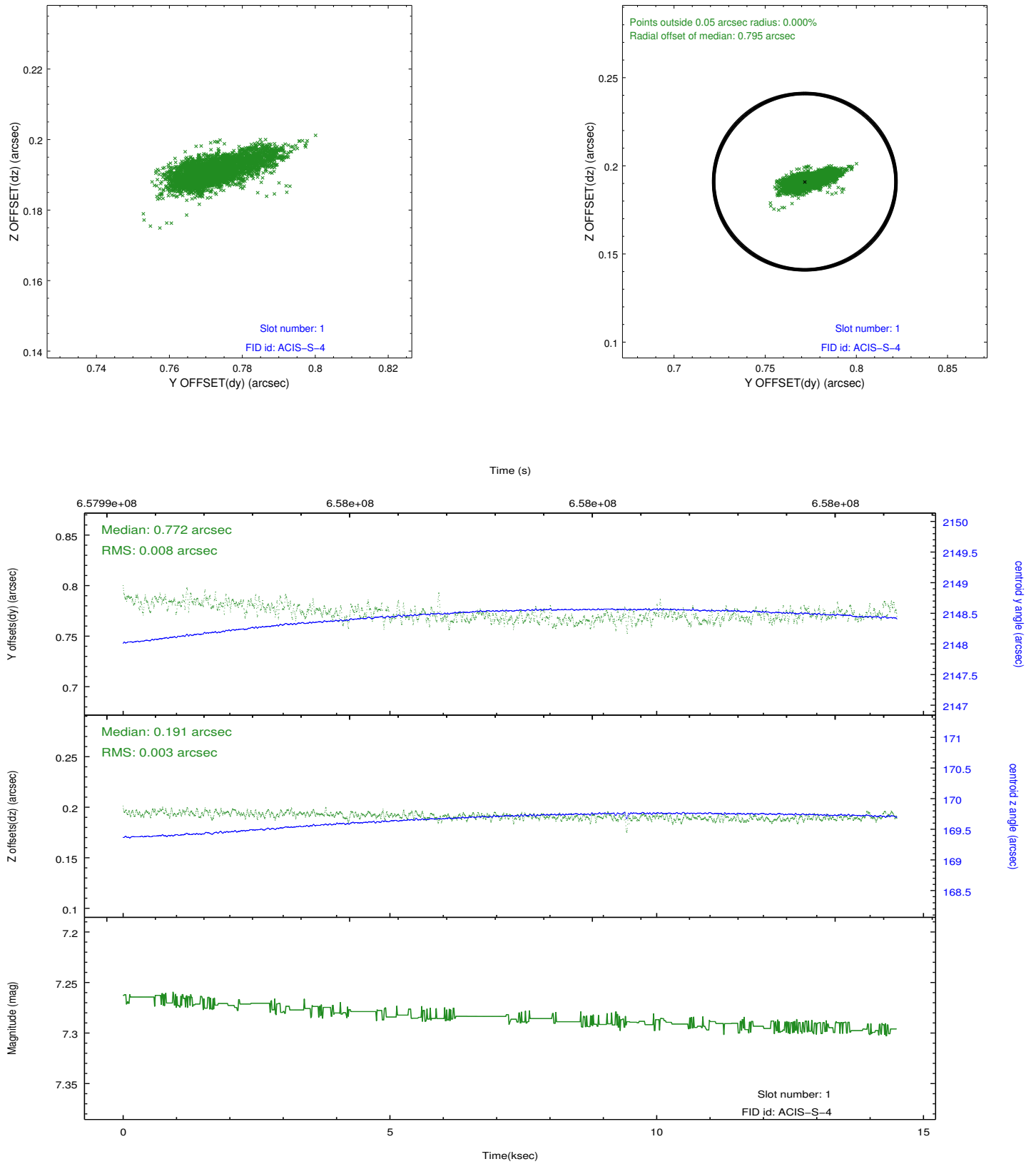


## 2.5 FID Slots

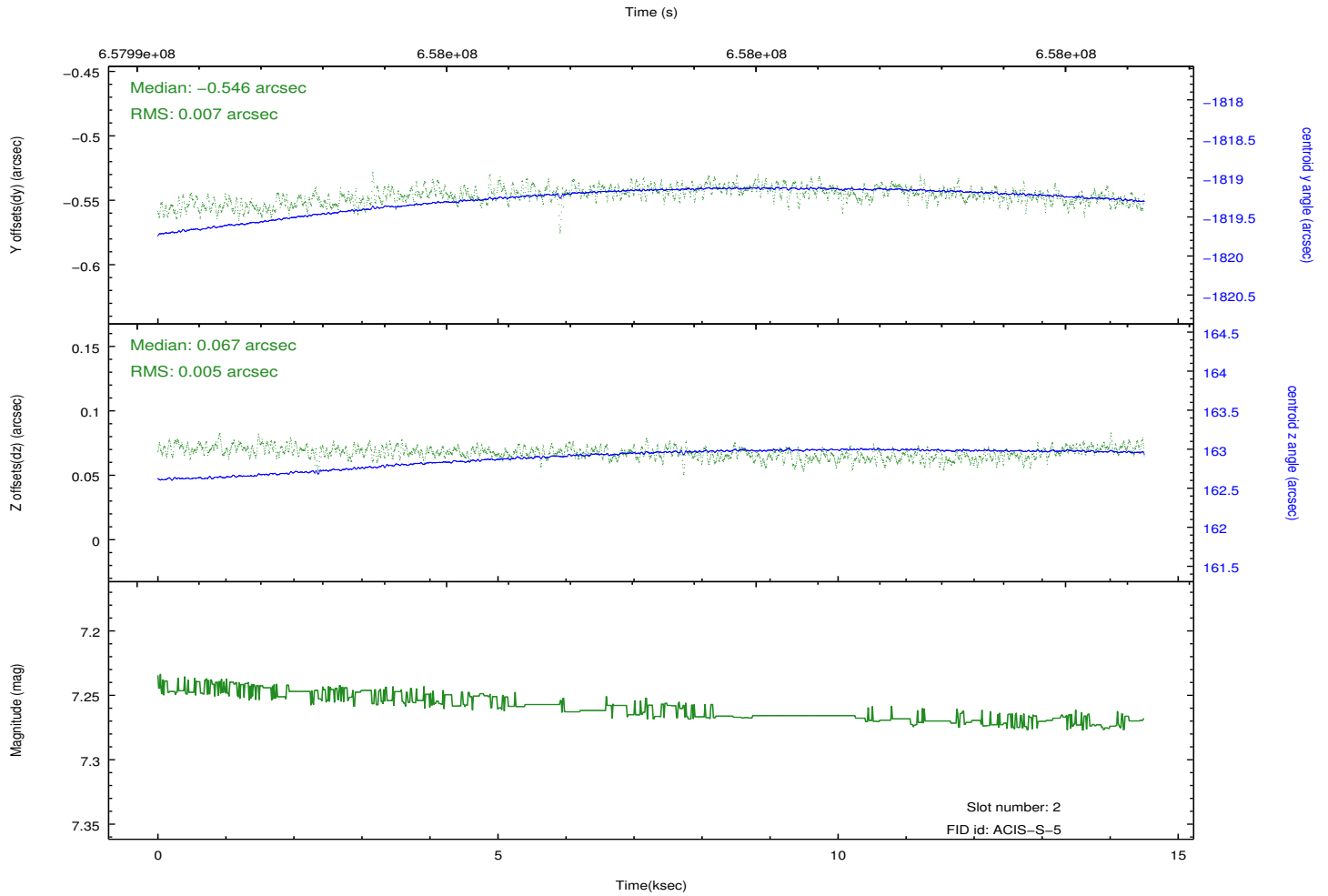
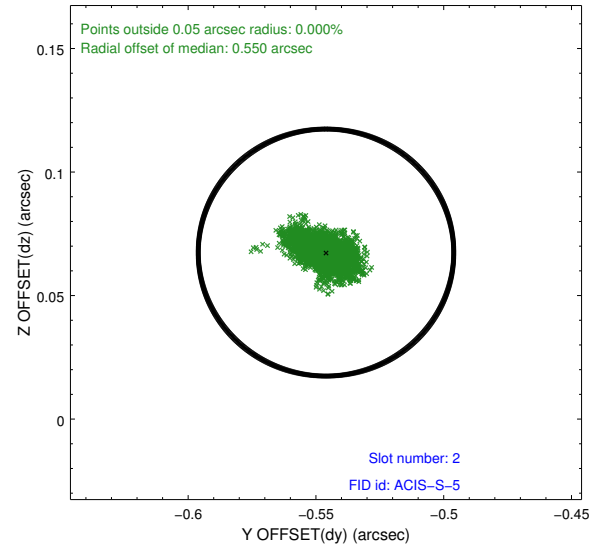
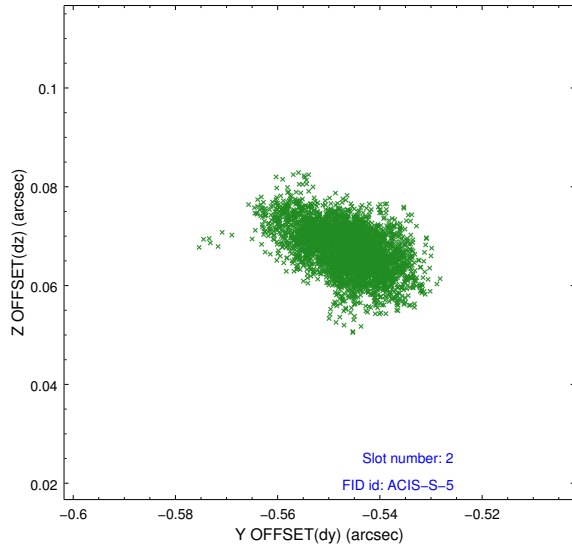
### 2.5.1 Slot 0



## 2.5.2 Slot 1



### 2.5.3 Slot 2



## A Summary

### A.1 Status

V&V Scientist	Beth Sundheim
V&V Date (YYYY-MM-DD)	2018.11.08
V&V Edition	1
V&V Disposition and Status	OK
V&V Charge Time	14.438462120652

### A.2 Comments

One optional chip was dropped.