

V&V Reference Report

L2 ASCDS Version : 10.7

Observation 21277 - L2 Version 1
Chandra X-Ray Center

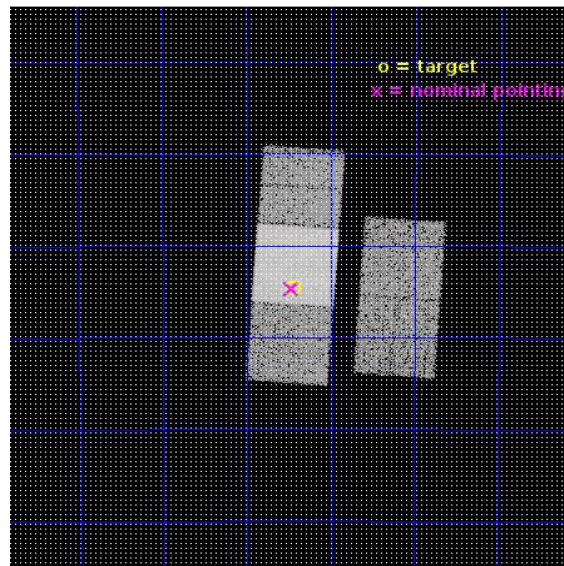
L2 Processing Date : Dec 7 2018

Contents

1	Front	2
2	OBI	3
2.1	OBI	3
2.1.1	Images	3
2.1.2	Bias	3
2.1.3	Parameters	4
2.1.4	Events	4
2.2	Compared Parameters	5
2.3	Aspect	6
2.4	Star Slots	9
2.4.1	Slot 3	9
2.4.2	Slot 4	10
2.4.3	Slot 5	11
2.4.4	Slot 7	12
2.5	FID Slots	13
2.5.1	Slot 0	13
2.5.2	Slot 1	14
2.5.3	Slot 2	15
A	Summary	16
A.1	Status	16
A.2	Comments	16

1 Front

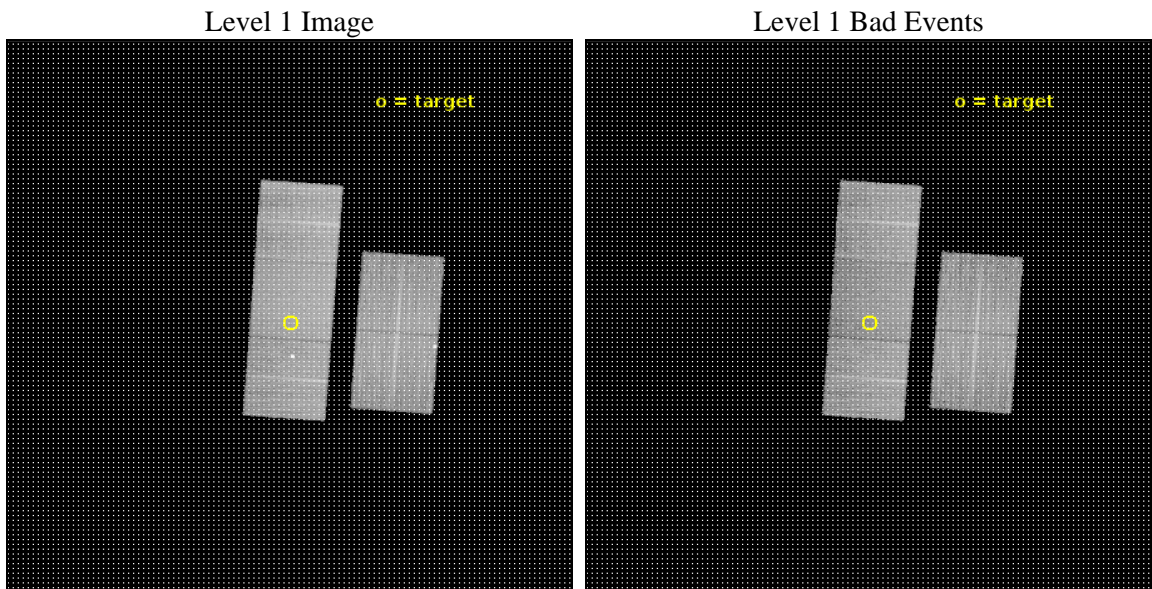
seq_num	300409	Sequence number
obs_id	21277	Observation id
title	The Mysterious Boundary Layers in High Accretion Rate White Dwarf Binaries	Proposal title
observer	Koji Mukai	Principal investigator
object	EC 21178-5417	Source name
dtcycle	0	
cycle	P	events from which exps? Prim/Second/Both
ra_targ	320.360417	Observer's specified target RA [deg]
dec_targ	-54.076306	Observer's specified target Dec [deg]
ra_nom	320.36707278025	Nominal RA [deg]
dec_nom	-54.078352824299	Nominal Dec [deg]
roll_nom	274.16202075448	Nominal Roll [deg]
revision	1	Processing version of data
ontime	15050.500115871	Sum of GTIs [s]
livetime	14853.854251841	Livetime [s]
ontime2	15050.500115871	Sum of GTIs [s]
ontime3	15050.500115871	Sum of GTIs [s]
ontime6	15050.500115871	Sum of GTIs [s]
ontime7	15050.500115871	Sum of GTIs [s]
ontime8	15047.359075665	Sum of GTIs [s]
l2events	105498	Number of level 2 events



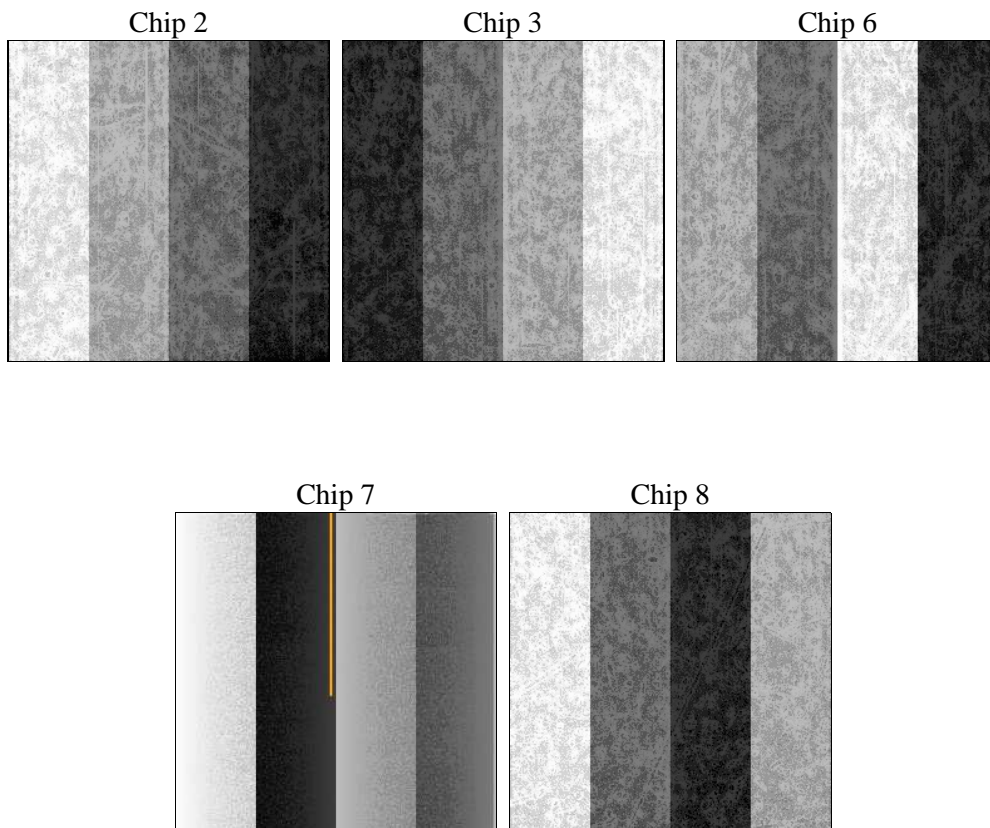
2 OBI

2.1 OBI

2.1.1 Images



2.1.2 Bias



2.1.3 Parameters

obi_num	0	Obi number	sched_exp_time	15000.000000	[s] Scheduled observation exposure time
ascdsver	10.7	Processing system revision	ontime	15050.500115871	Sum of GTIs [s]
caldbver	4.8.0.1	 	ontime2	15050.500115871	Sum of GTIs [s]
date	2018-12-07T09:43:39	Date and time of file creation	ontime3	15050.500115871	Sum of GTIs [s]
revision	1	Processing version of data	ontime6	15050.500115871	Sum of GTIs [s]
			ontime7	15050.500115871	Sum of GTIs [s]
			ontime8	15047.359075665	Sum of GTIs [s]
			l1events	657768	Number of level 1 events

2.1.4 Events

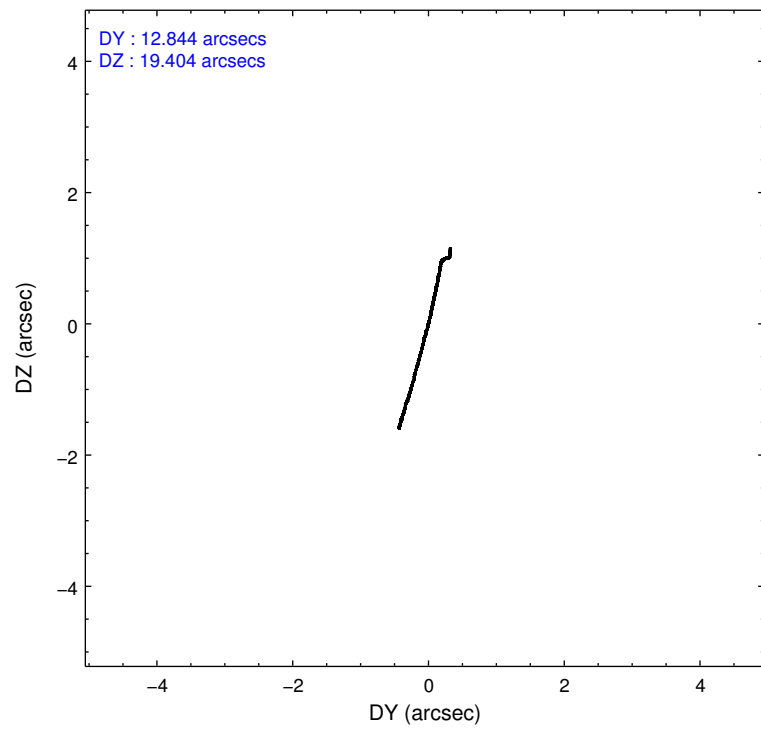
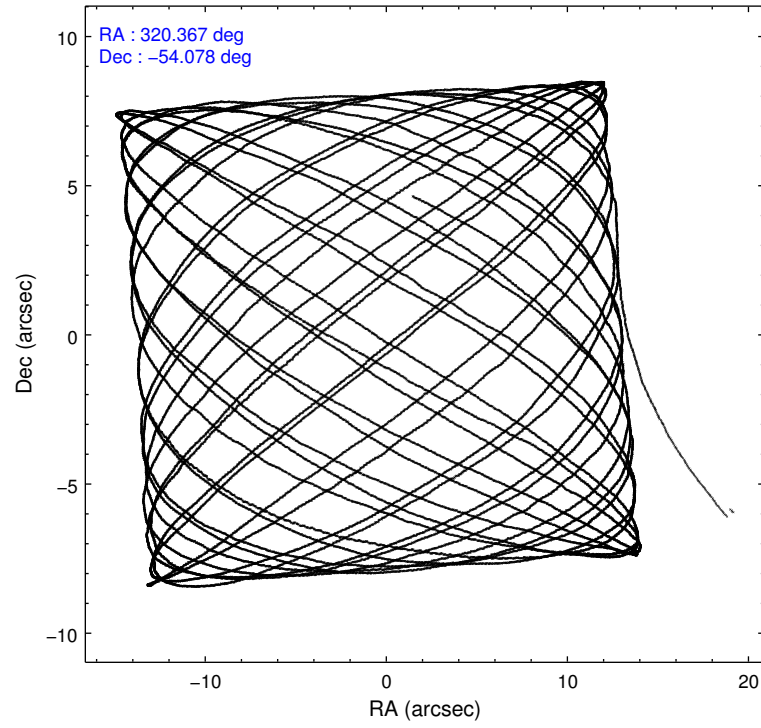
	ccd 2	ccd 3	ccd 6	ccd 7	ccd 8
level 1 events	119928	112966	127538	146365	150971
rejected events	105748	101594	109914	83252	112485
rejected %	88%	89%	86%	56%	74%

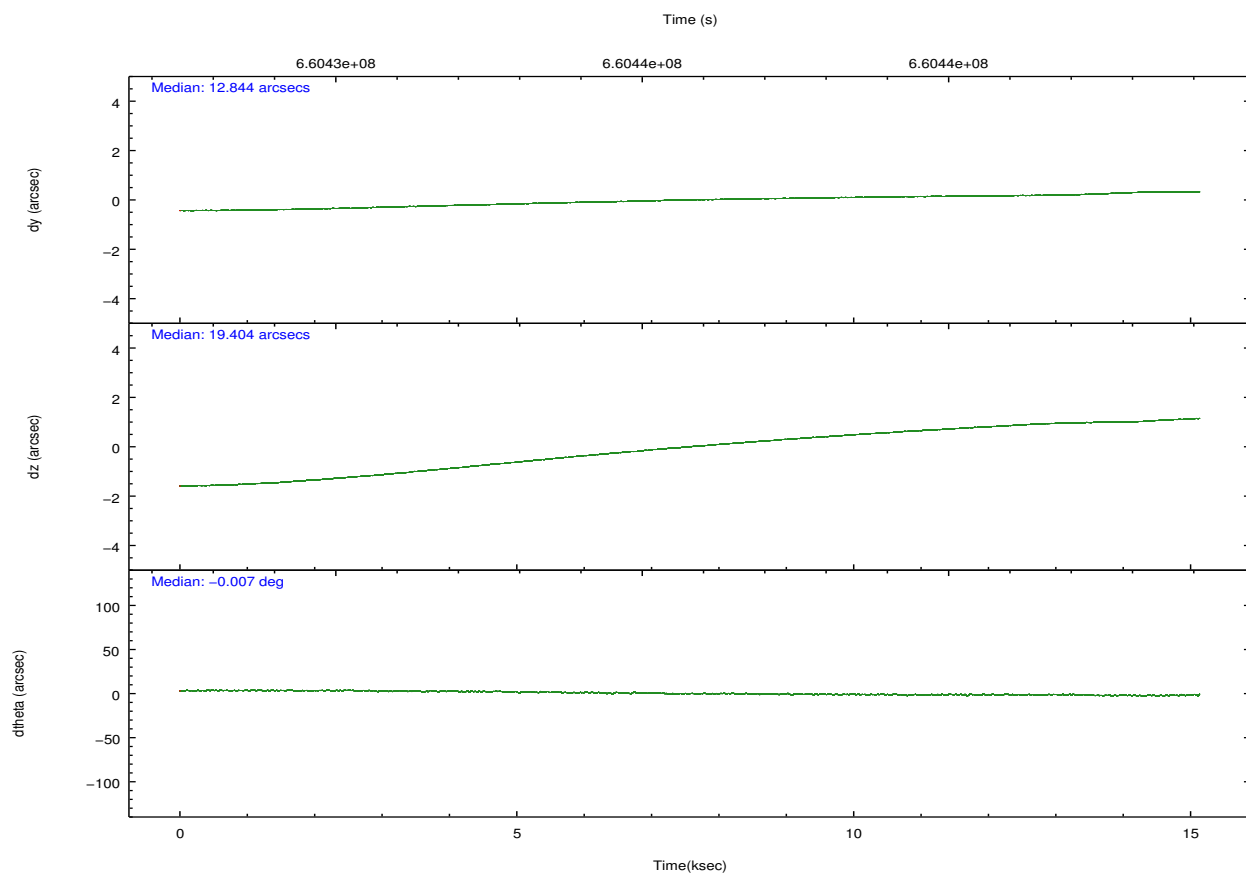
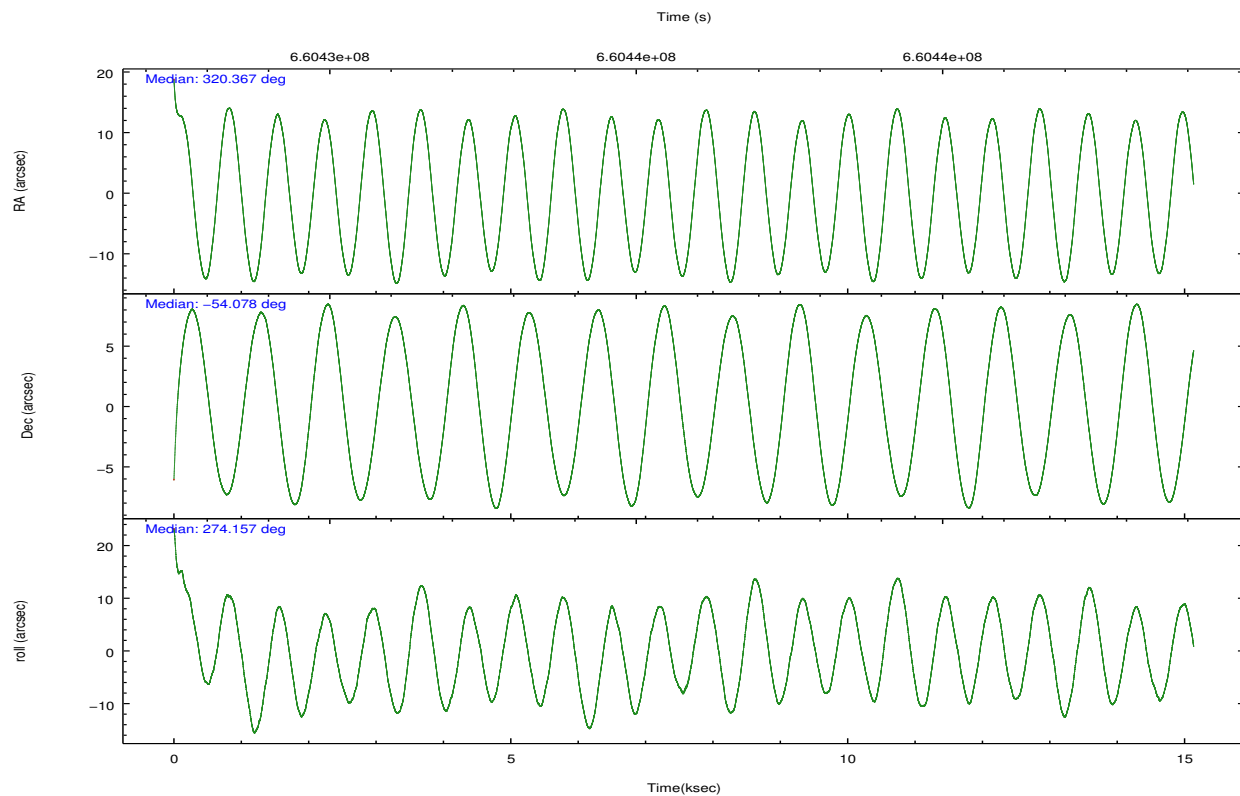
	ccd 2	ccd 3	ccd 6	ccd 7	ccd 8
grade 0 events	6868	3785	8365	5431	10869
	5%	3%	6%	3%	7%
grade 1 events	91	53	104	215	133
	0%	0%	0%	0%	0%
grade 2 events	2684	2429	3545	13055	9282
	2%	2%	2%	8%	6%
grade 3 events	1170	1248	1120	4840	3939
	0%	1%	0%	3%	2%
grade 4 events	1132	1268	1089	4890	3767
	0%	1%	0%	3%	2%
grade 5 events	4149	4995	4747	13907	7581
	3%	4%	3%	9%	5%
grade 6 events	2329	2645	3509	34904	10633
	1%	2%	2%	23%	7%
grade 7 events	101505	96543	105059	69123	104767
	84%	85%	82%	47%	69%

2.2 Compared Parameters

Parameter	Planned	Actual	Parameter	Planned	Actual
Instrument	ACIS	ACIS	Obspar format version number	7	7
Detector	ACIS-23678	ACIS-23678	Obspar file type	PREDICTED	ACTUAL
Grating	NONE	NONE	Obspar update status	NONE	UPDATED
Data mode	FAINT	FAINT	CCD I0 on	N	N
Observation mode	POINTING	POINTING	CCD I1 on	N	N
[deg] Pointing RA	320.340261	320.3670727802543	CCD I2 on	O1	Y
[deg] Pointing Dec	-54.055847	-54.07835282429878	CCD I3 on	Y	Y
[deg] Pointing Roll	273.983681	274.1620207544773	CCD S0 on	N	N
[mm] SIM focus pos	-0.684267	-0.6828225247311905	CCD S1 on	N	N
[mm] SIM defocus	0	0.001444936568705701	CCD S2 on	Y	Y
[mm] SIM translation stage pos	-190.132523	-190.1425803651734	CCD S3 on	Y	Y
[mm] SIM translation stage offset	0	0.01005778216563158	CCD S4 on	Y	Y
[s] Observation start time (MET)	660428368.184000	660427215.23985	CCD S5 on	N	N
Observation start date	2018-12-05T20:18:19	2018-12-05T20:00:15	Number of optional ACIS chips dropped	0	0
[s] Observation end time (MET)	660443368.184000	660444297.37837	On-chip summing requested	N	N
Observation end date	2018-12-06T00:28:19	2018-12-06T00:44:57	Subarray requested	NONE	NONE
Read mode	TIMED	TIMED	Alternating exposures requested	N	N
			[s] Primary exposure time	0.000000	3.1

2.3 Aspect



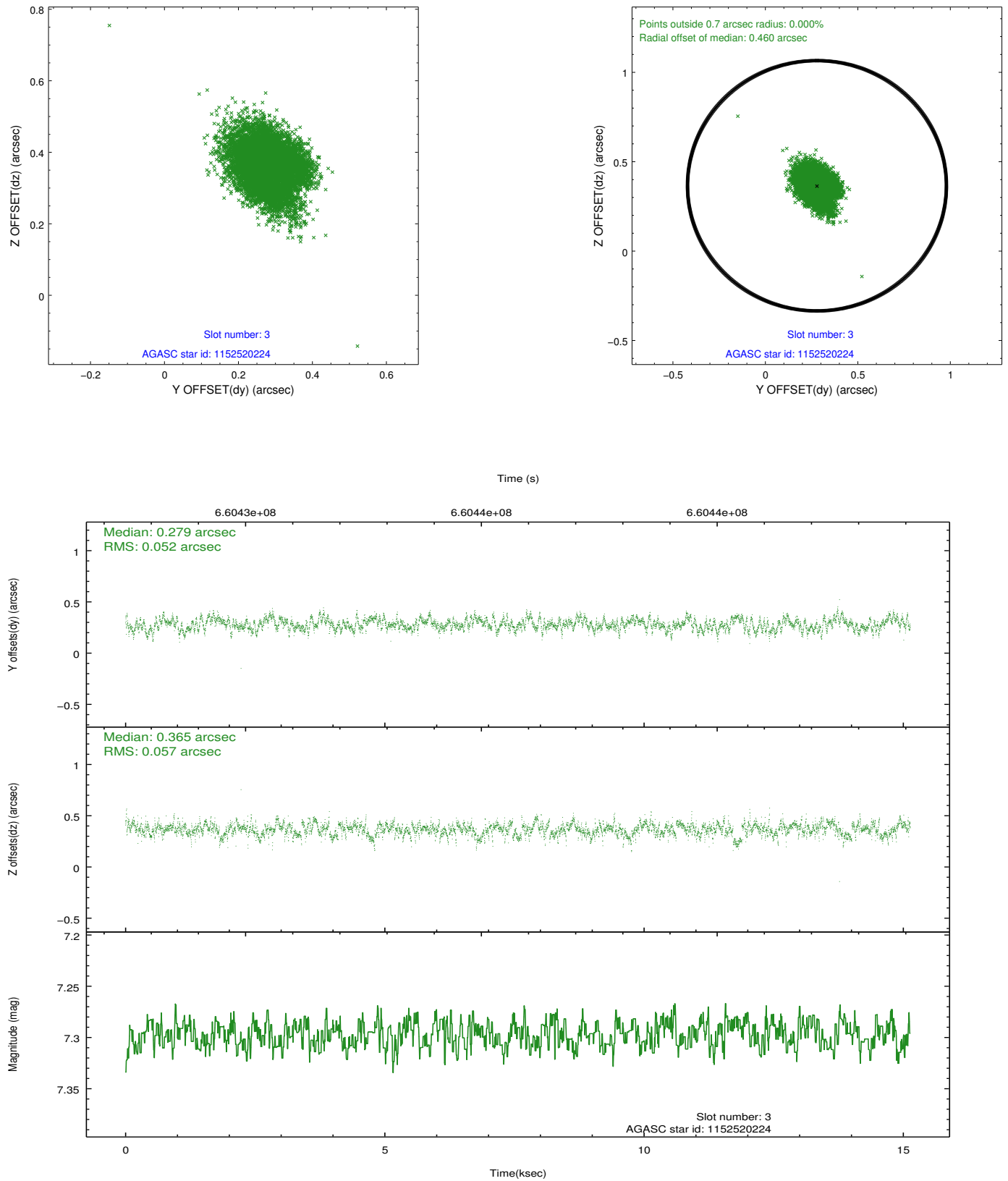


Slot Statistics

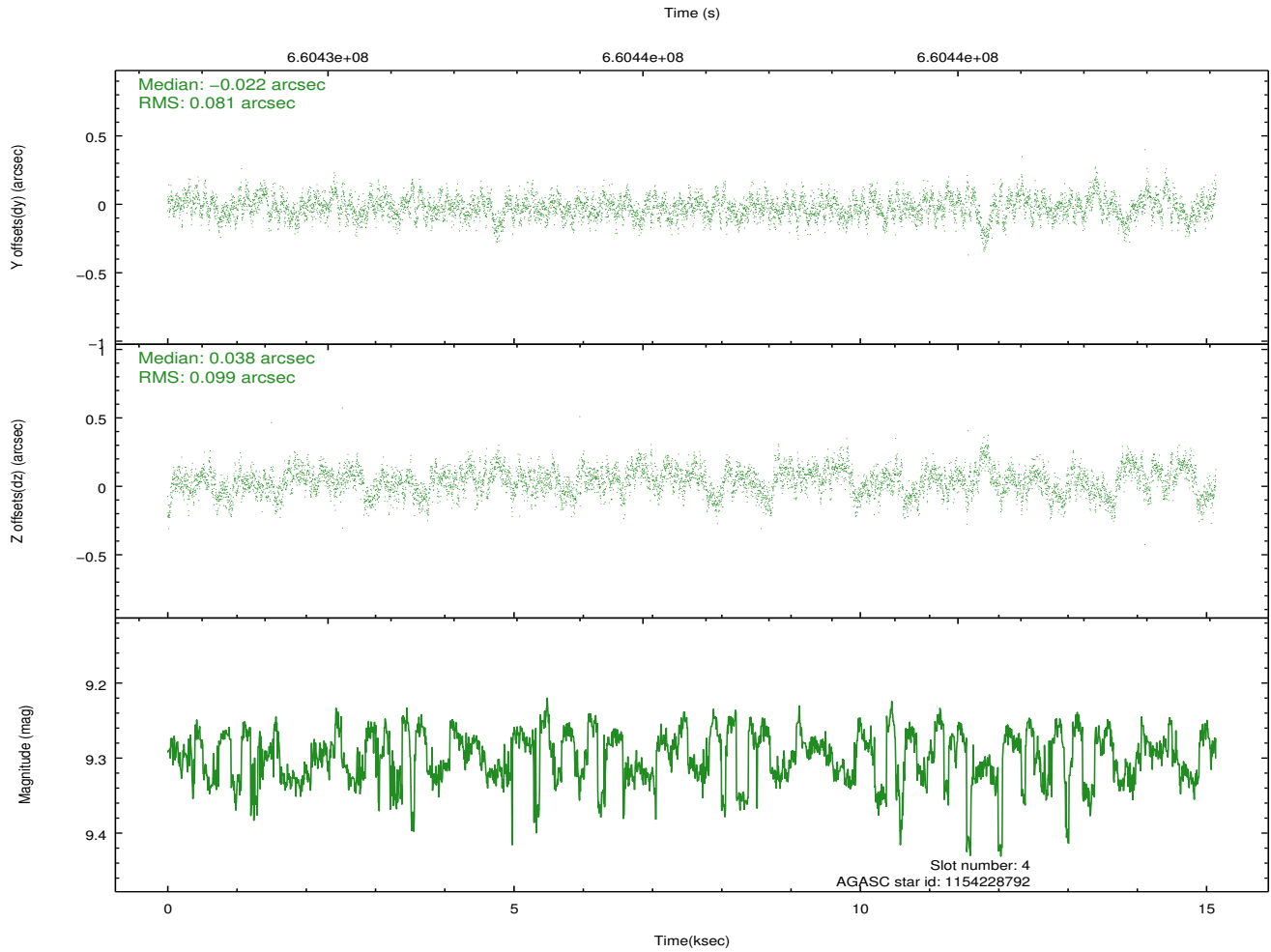
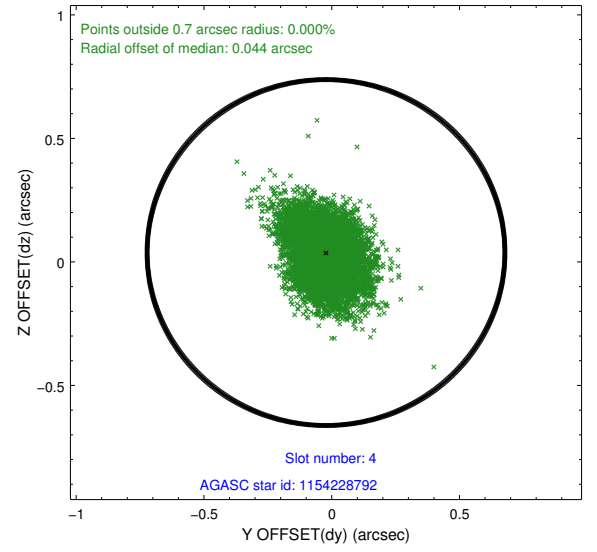
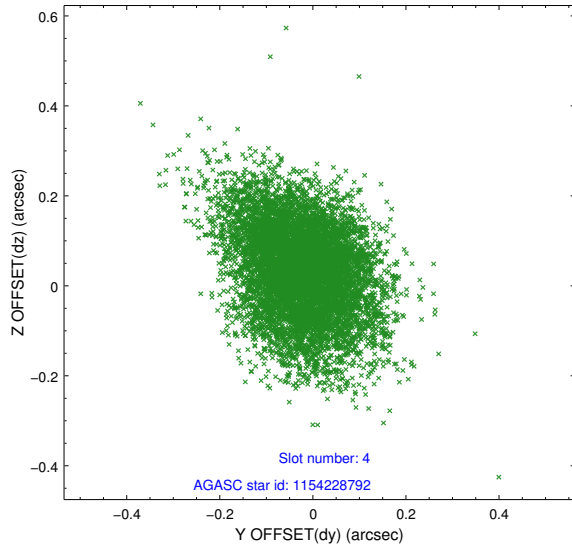
pt	status	used	id	mag	n_pts	frac_pts	med_dy	med_dz	dr1	dr2	ra	dec	mean_y	mea
0	FID		ACIS-S-2	7.15	3692	1.000	-0.270	-0.200	0.037	0.045	0.000000	0.000000	-765.90	-1740
1	FID		ACIS-S-4	7.28	3691	1.000	0.754	0.185	0.009	0.020	0.000000	0.000000	2148.18	167
2	FID		ACIS-S-5	7.26	3692	1.000	-0.517	0.025	0.035	0.047	0.000000	0.000000	-1818.69	161
3	GUIDE	used	1152520224	7.30	7384	1.000	0.279	0.365	0.082	0.131	319.343527	-54.017354	-268.71	-2094
4	GUIDE	used	1154228792	9.30	7369	1.000	-0.022	0.038	0.134	0.223	320.764919	-53.715273	-1157.39	987
5	GUIDE	used	1154229456	8.76	7378	1.000	0.050	0.069	0.091	0.149	320.401961	-53.684047	-1325.85	224
6	OMITTED			0.00	0	0.000	0.000	0.000	0.000	0.000	0.000000	0.000000	0.00	0
7	GUIDE	used	1154754632	6.37	7383	1.000	-0.304	-0.468	0.089	0.136	321.564331	-54.660458	2369.46	2389

2.4 Star Slots

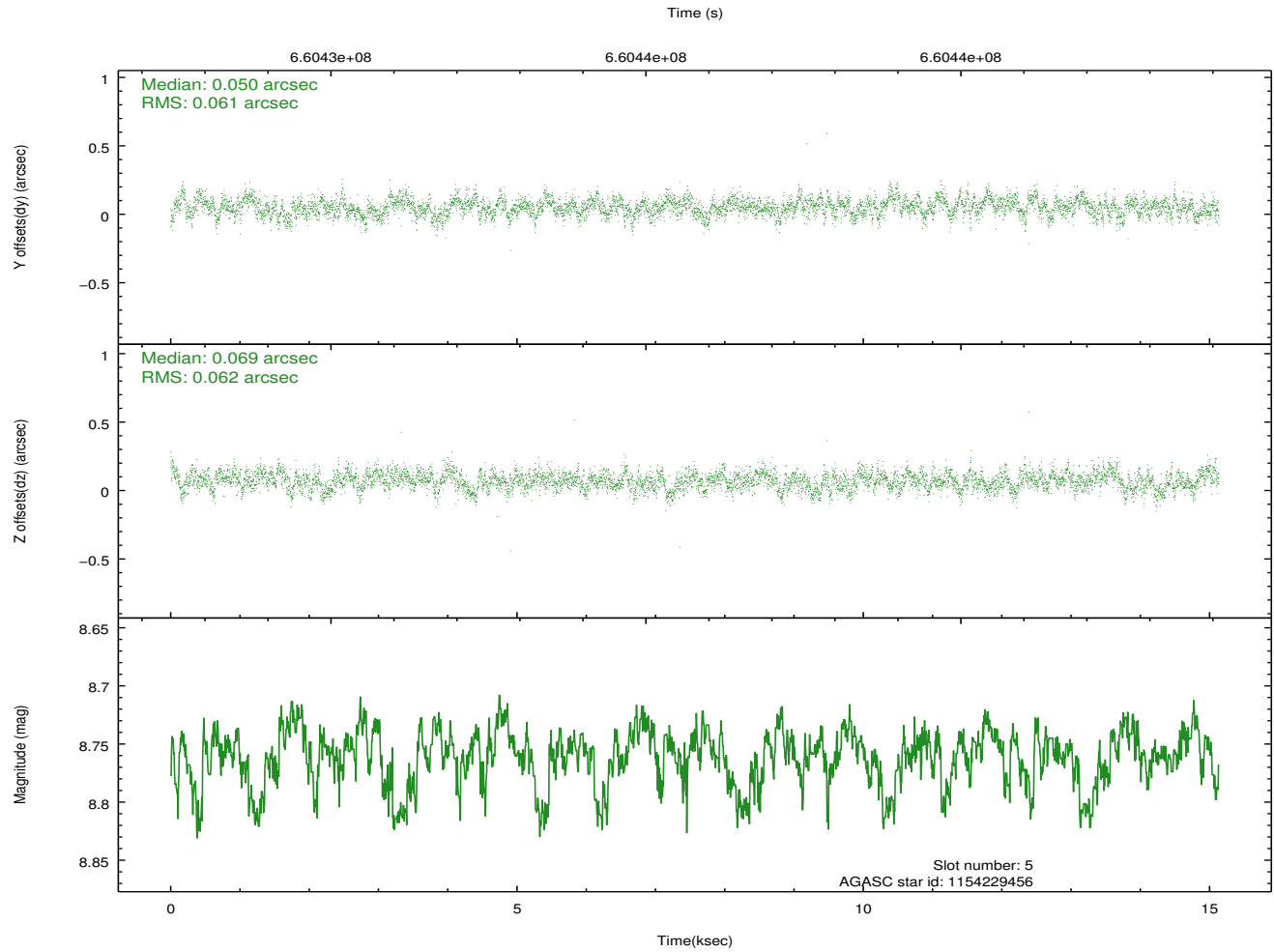
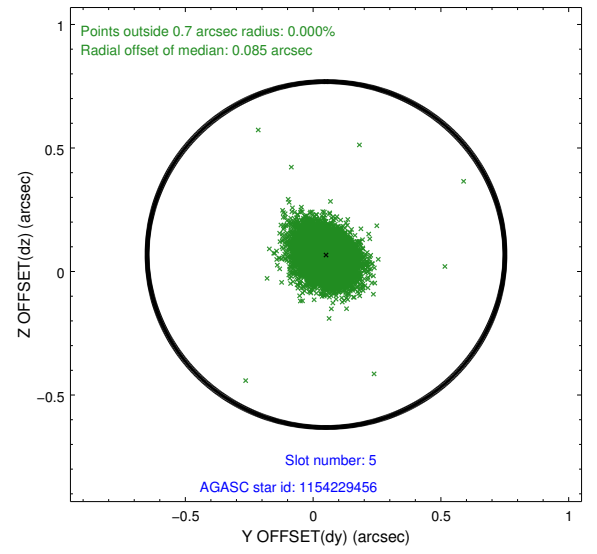
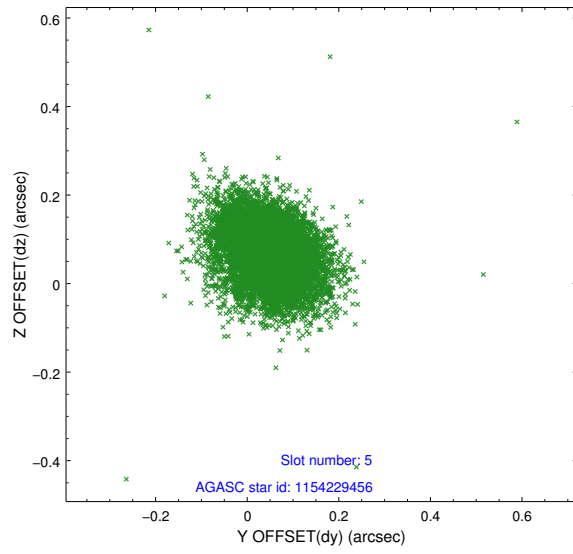
2.4.1 Slot 3



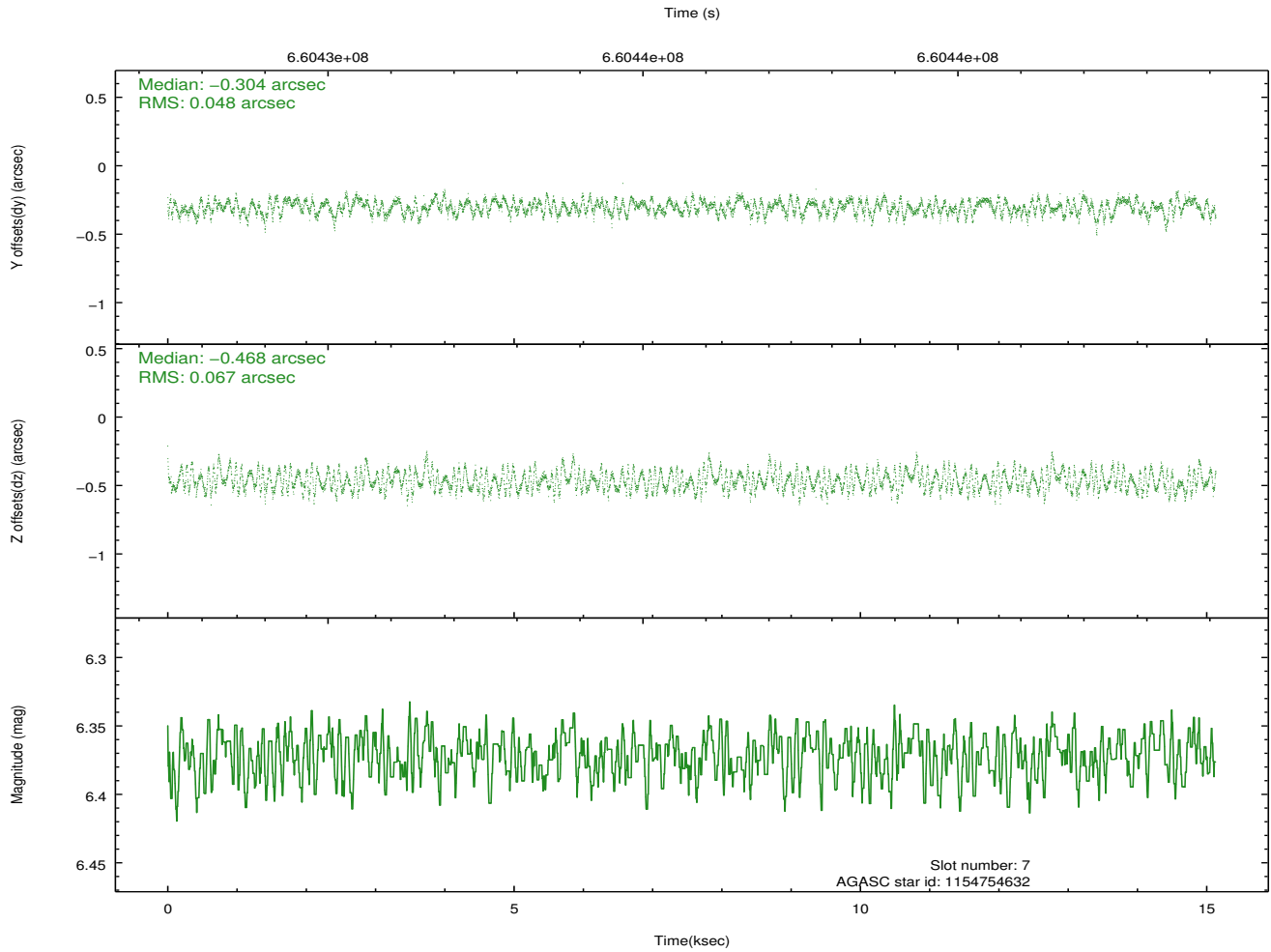
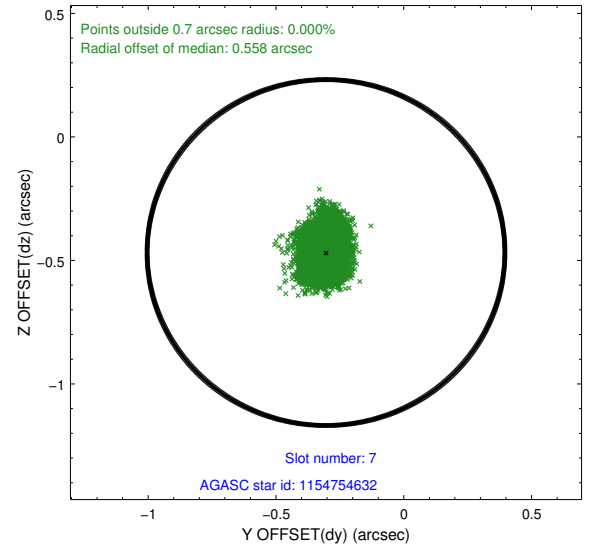
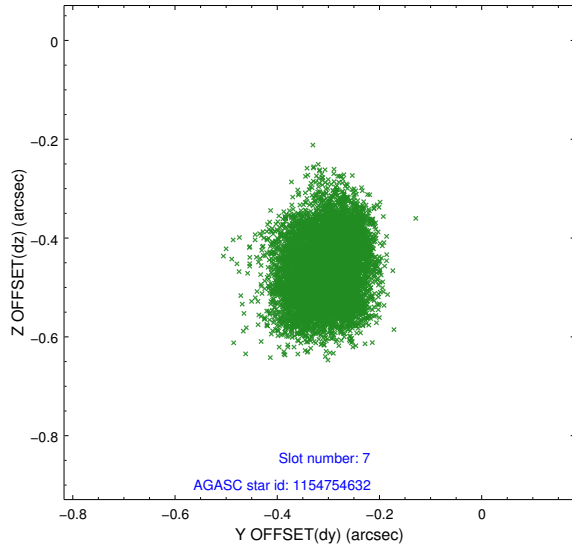
2.4.2 Slot 4



2.4.3 Slot 5

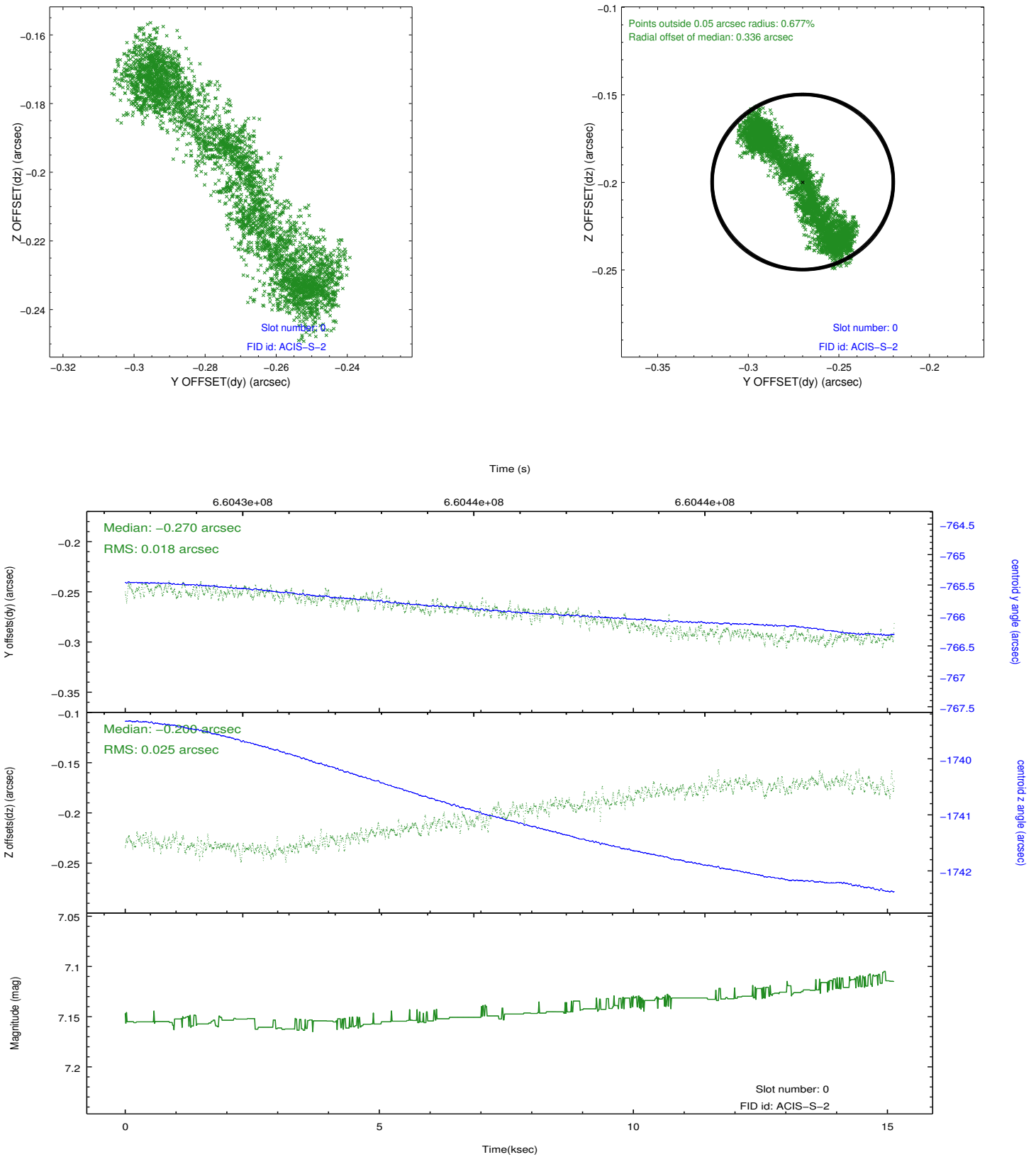


2.4.4 Slot 7

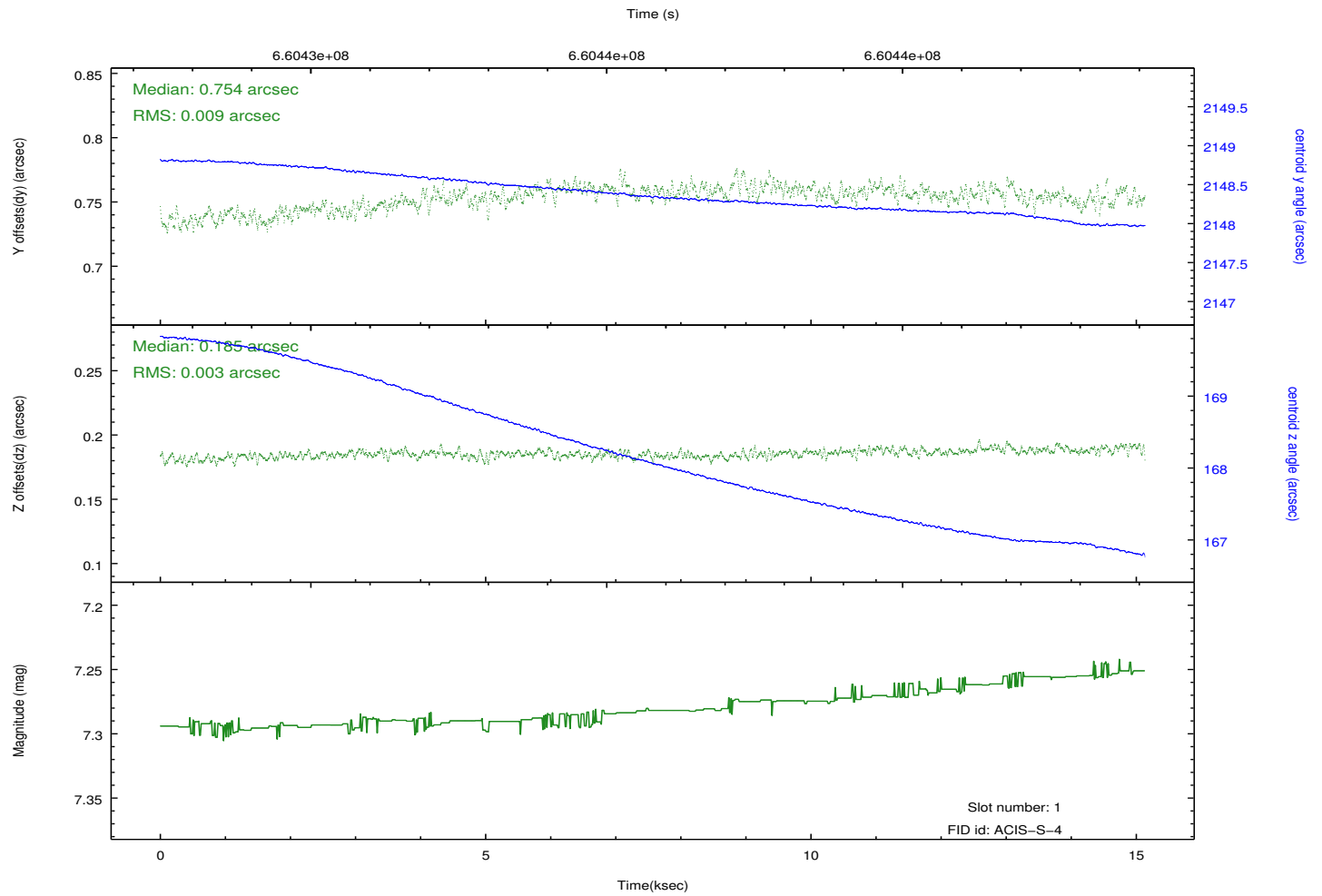
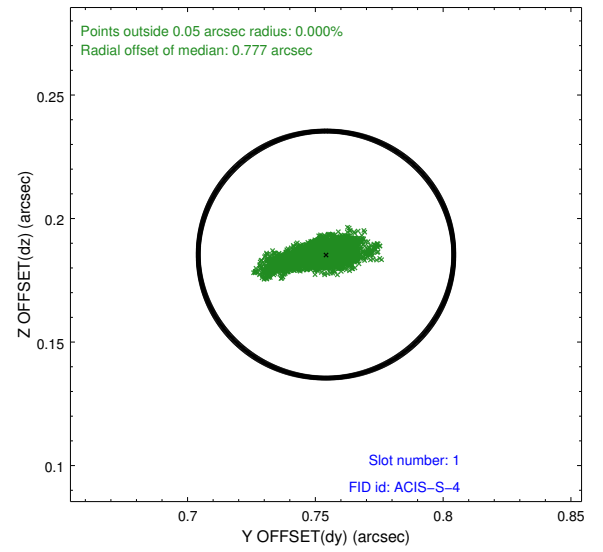
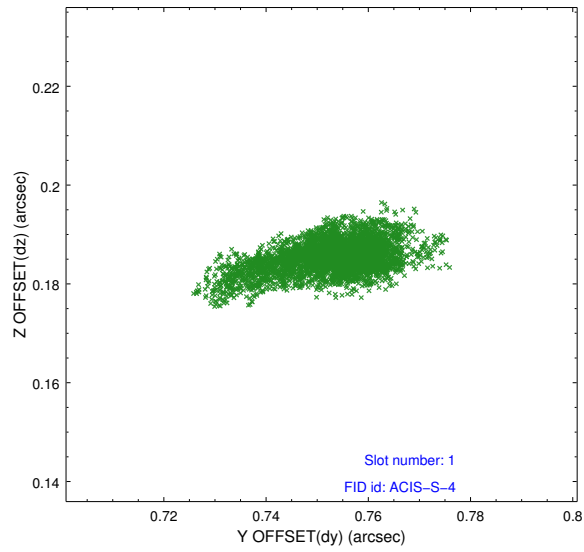


2.5 FID Slots

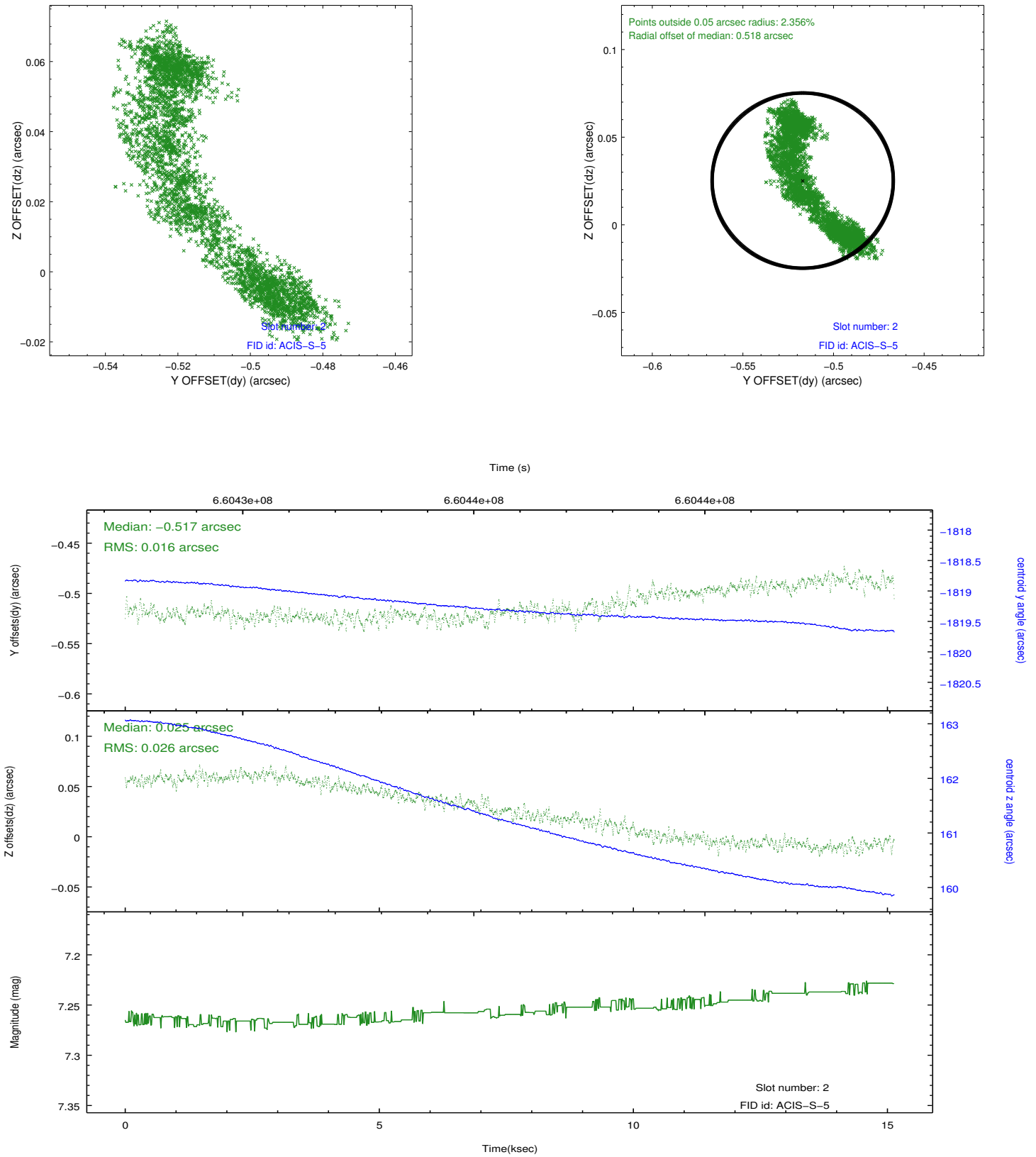
2.5.1 Slot 0



2.5.2 Slot 1



2.5.3 Slot 2



A Summary

A.1 Status

V&V Scientist	Jen Lauer
V&V Date (YYYY-MM-DD)	2018.12.07
V&V Edition	1
V&V Disposition and Status	OK
V&V Charge Time	15.050500115871

A.2 Comments

The guide star in slot 6 was removed from the aspect solution due to poor data quality. The aspect solution is improved by the removal of this guide star from the solution.