

V&V Reference Report

L2 ASCDS Version : 10.6

Observation 19575 - L2 Version 1
Chandra X-Ray Center

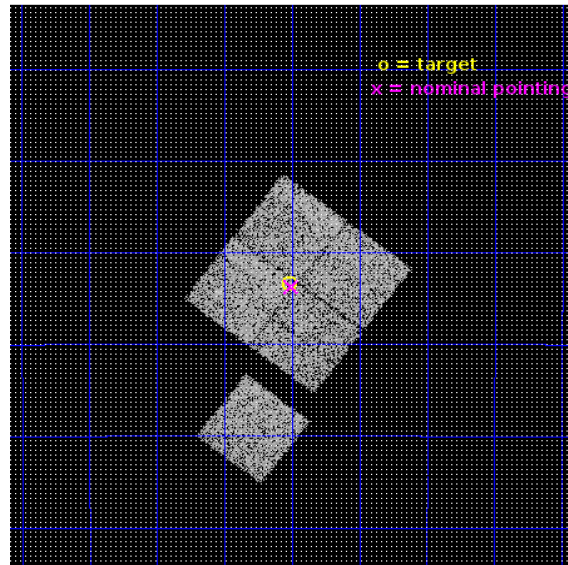
L2 Processing Date : Jun 17 2017

Contents

1	Front	2
2	OBI	3
2.1	OBI	3
2.1.1	Images	3
2.1.2	Bias	3
2.1.3	Parameters	4
2.1.4	Events	4
2.2	Compared Parameters	5
2.3	Aspect	6
2.4	Star Slots	9
2.4.1	Slot 3	9
2.4.2	Slot 4	10
2.4.3	Slot 5	11
2.4.4	Slot 6	12
2.4.5	Slot 7	13
2.5	FID Slots	14
2.5.1	Slot 0	14
2.5.2	Slot 1	15
2.5.3	Slot 2	16
A	Summary	17
A.1	Status	17
A.2	Comments	17

1 Front

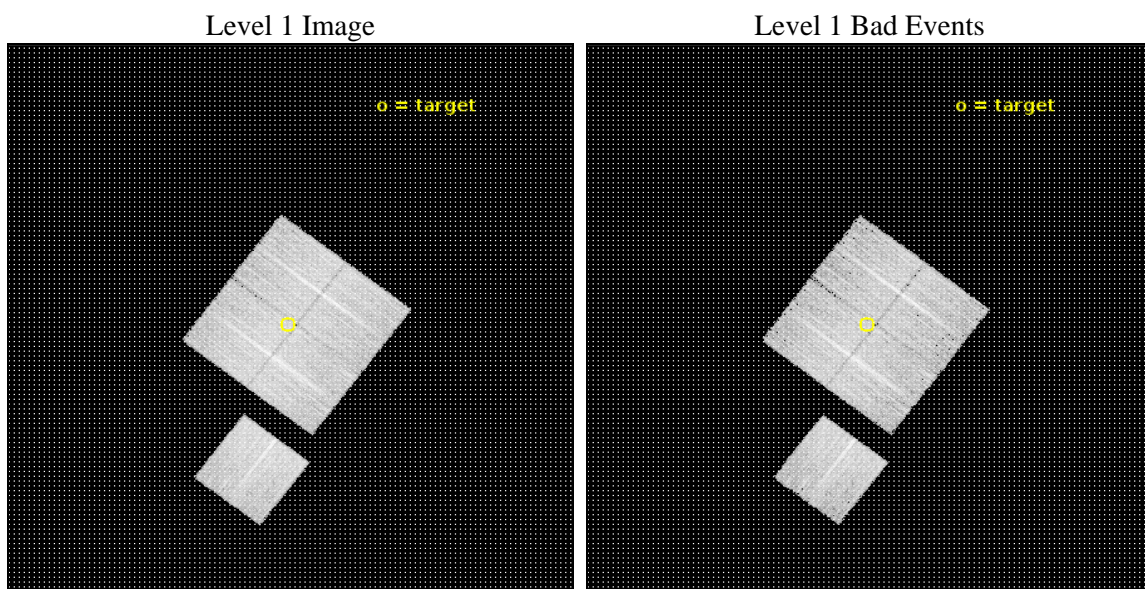
seq_num	801667	Sequence number
obs_id	19575	Observation id
title	Unravelling the peculiar outskirts of the X-ray bright galaxy cluster PKS 0745-191	Proposal title
observer	Stephen Walker	Principal investigator
object	PKS 0745-191 East	Source name
dtcycle	0	
cycle	P	events from which exps? Prim/Second/Both
ra_targ	117.12875	Observer's specified target RA [deg]
dec_targ	-19.390333	Observer's specified target Dec [deg]
ra_nom	117.1259434932	Nominal RA [deg]
dec_nom	-19.395746134139	Nominal Dec [deg]
roll_nom	217.18796015109	Nominal Roll [deg]
revision	1	Processing version of data
ontime	9776.5789757967	Sum of GTIs [s]
livetime	9648.8407740652	Livetime [s]
ontime0	9776.4558259249	Sum of GTIs [s]
ontime1	9776.4968658686	Sum of GTIs [s]
ontime2	9776.5379059315	Sum of GTIs [s]
ontime3	9776.5789757967	Sum of GTIs [s]
ontime6	9776.414785862	Sum of GTIs [s]
l2events	34819	Number of level 2 events



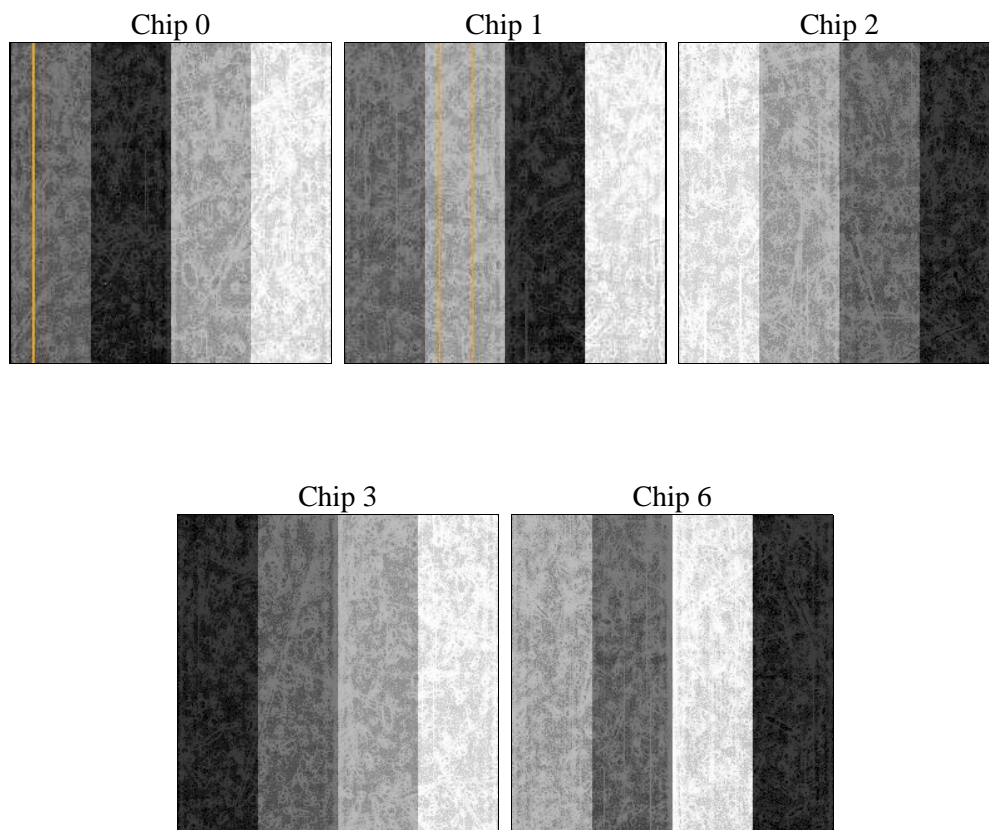
2 OBI

2.1 OBI

2.1.1 Images



2.1.2 Bias



2.1.3 Parameters

obi_num	0	Obi number	sched_exp_time	10000.000000	[s] Scheduled observation exposure time
ascdsver	10.6	Processing system revision	ontime	9776.5789757967	Sum of GTIs [s]
caldbver	4.7.5	 	ontime0	9776.4558259249	Sum of GTIs [s]
date	2017-06-17T21:36:40	Date and time of file creation	ontime1	9776.4968658686	Sum of GTIs [s]
revision	1	Processing version of data	ontime2	9776.5379059315	Sum of GTIs [s]
			ontime3	9776.5789757967	Sum of GTIs [s]
			ontime6	9776.414785862	Sum of GTIs [s]
			l1events	337787	Number of level 1 events

2.1.4 Events

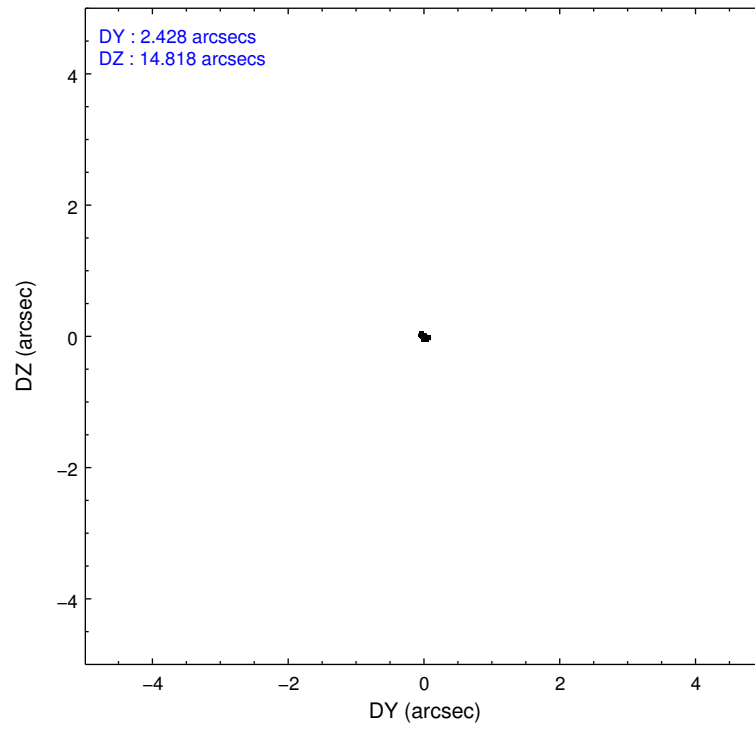
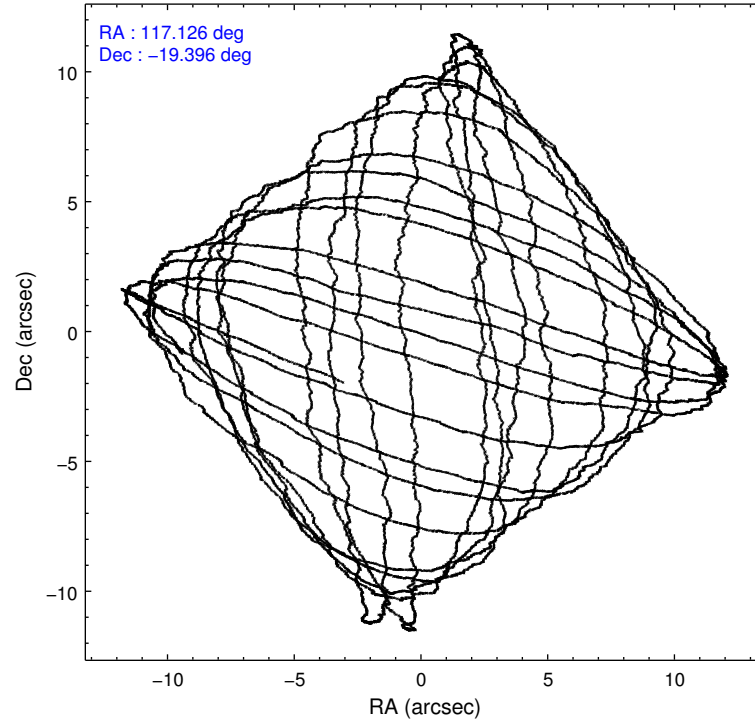
	ccd 0	ccd 1	ccd 2	ccd 3	ccd 6
level 1 events	64534	66369	68947	68232	69705
rejected events	55879	57395	61201	60114	61817
rejected %	86%	86%	88%	88%	88%

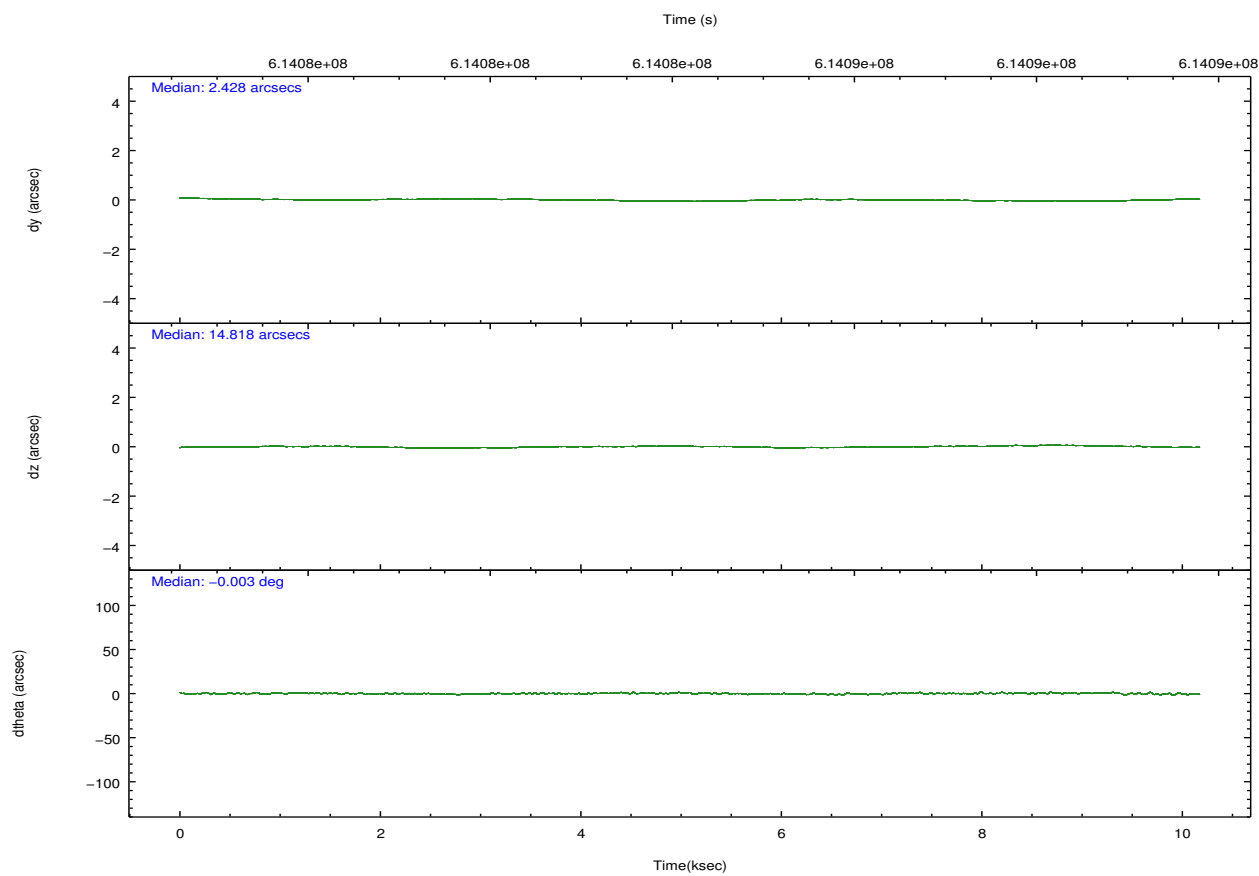
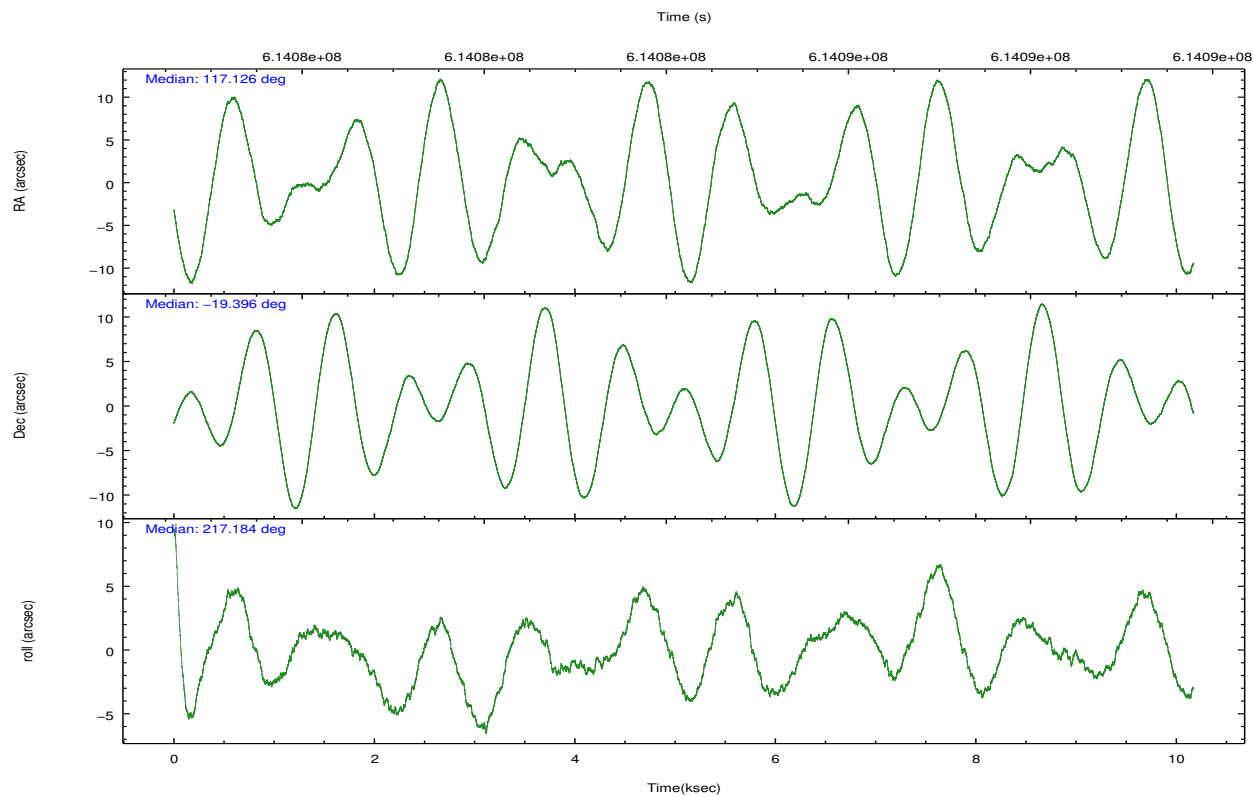
	ccd 0	ccd 1	ccd 2	ccd 3	ccd 6
grade 0 events	3233	3186	2763	3226	2630
	5%	4%	4%	4%	3%
grade 1 events	45	30	43	46	29
	0%	0%	0%	0%	0%
grade 2 events	2177	2179	1936	1659	1883
	3%	3%	2%	2%	2%
grade 3 events	823	909	776	797	830
	1%	1%	1%	1%	1%
grade 4 events	824	824	759	825	772
	1%	1%	1%	1%	1%
grade 5 events	3030	3246	2895	3356	3304
	4%	4%	4%	4%	4%
grade 6 events	1598	1884	1515	1613	1773
	2%	2%	2%	2%	2%
grade 7 events	52804	54111	58260	56710	58484
	81%	81%	84%	83%	83%

2.2 Compared Parameters

Parameter	Planned	Actual	Parameter	Planned	Actual
Instrument	ACIS	ACIS	Obspar format version number	7	7
Detector	ACIS-01236	ACIS-01236	Obspar file type	PREDICTED	ACTUAL
Grating	NONE	NONE	Obspar update status	NONE	UPDATED
Data mode	VFAINT	VFAINT	CCD I0 on	Y	Y
Observation mode	POINTING	POINTING	CCD I1 on	Y	Y
[deg] Pointing RA	117.137250	117.1259434932016	CCD I2 on	Y	Y
[deg] Pointing Dec	-19.370275	-19.39574613413918	CCD I3 on	Y	Y
[deg] Pointing Roll	216.983030	217.1879601510872	CCD S0 on	N	N
[mm] SIM focus pos	-0.782348	-0.7809083437167272	CCD S1 on	N	N
[mm] SIM defocus	0	0.001439871863259334	CCD S2 on	O1	Y
[mm] SIM translation stage pos	-233.592463	-233.5874344608287	CCD S3 on	N	N
[mm] SIM translation stage offset	0	-0.005018542100998502	CCD S4 on	N	N
[s] Observation start time (MET)	614079276.184000	614078899.77779	CCD S5 on	N	N
Observation start date	2017-06-17T09:33:27	2017-06-17T09:28:19	Number of optional ACIS chips dropped	0	0
[s] Observation end time (MET)	614089276.184000	614090190.15345	On-chip summing requested	N	N
Observation end date	2017-06-17T12:20:07	2017-06-17T12:36:30	Subarray requested	NONE	NONE
Read mode	TIMED	TIMED	Alternating exposures requested	N	N
			[s] Primary exposure time	0.000000	3.1

2.3 Aspect



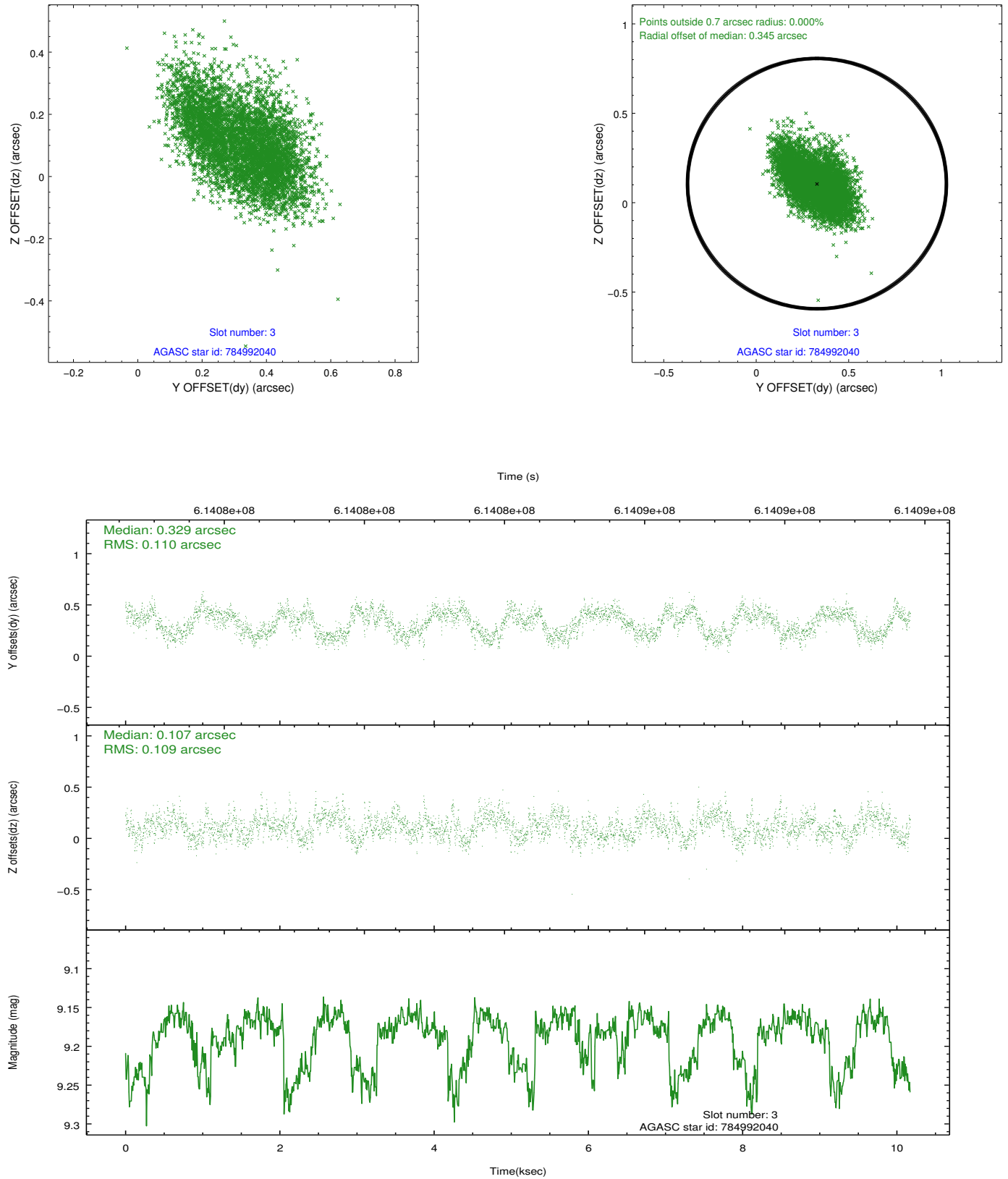


Slot Statistics

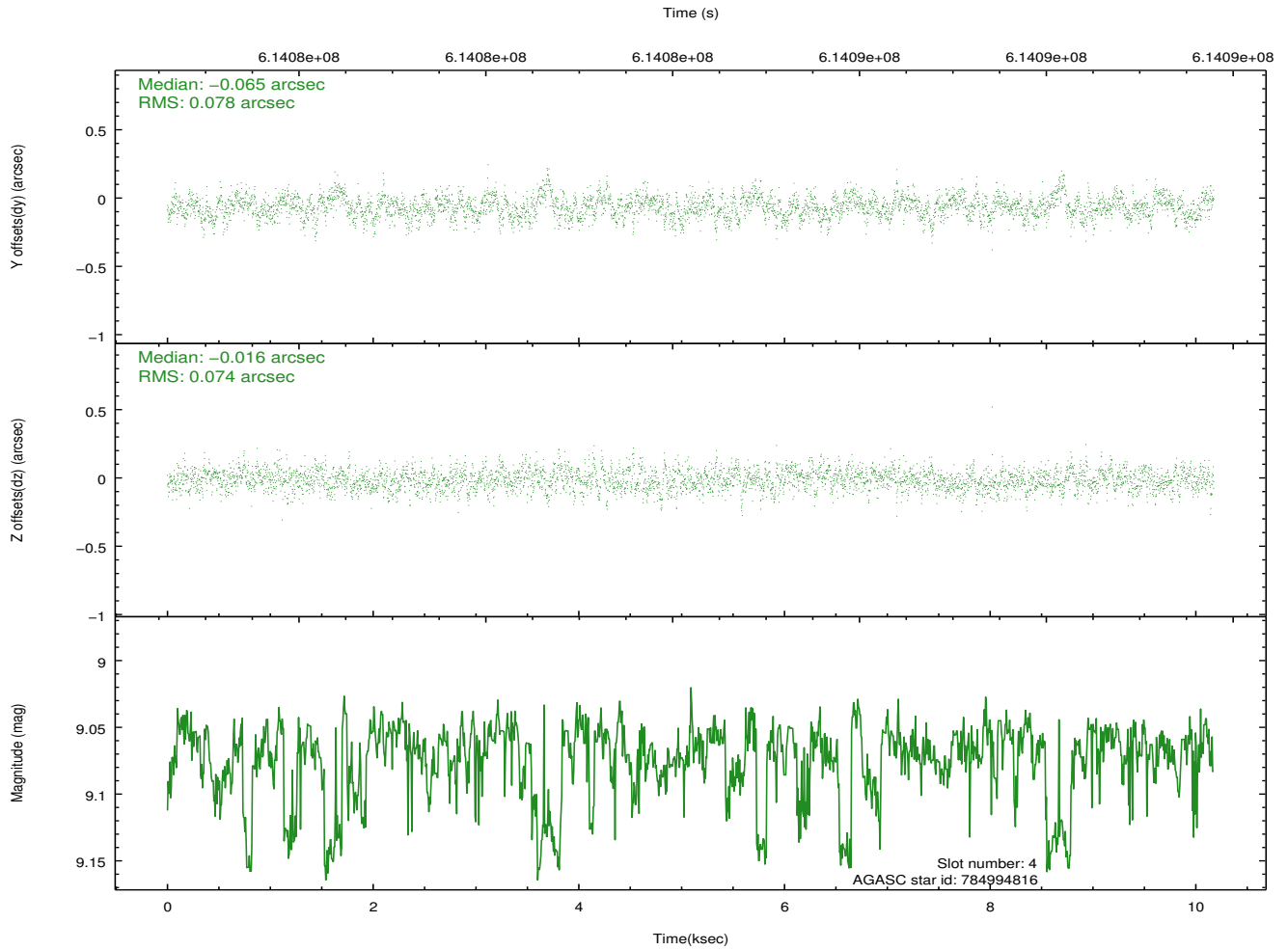
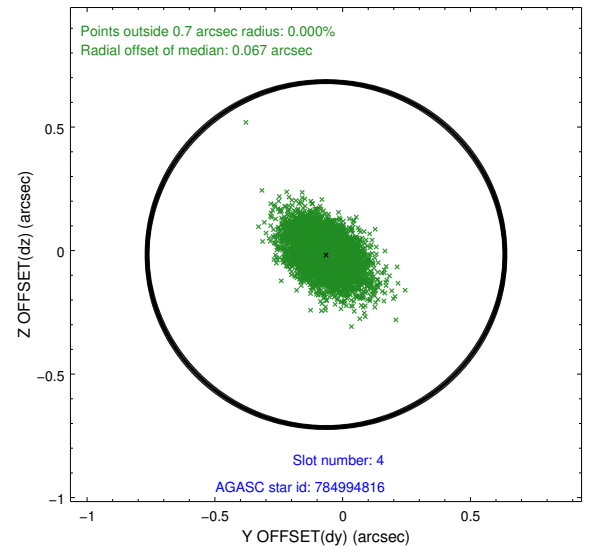
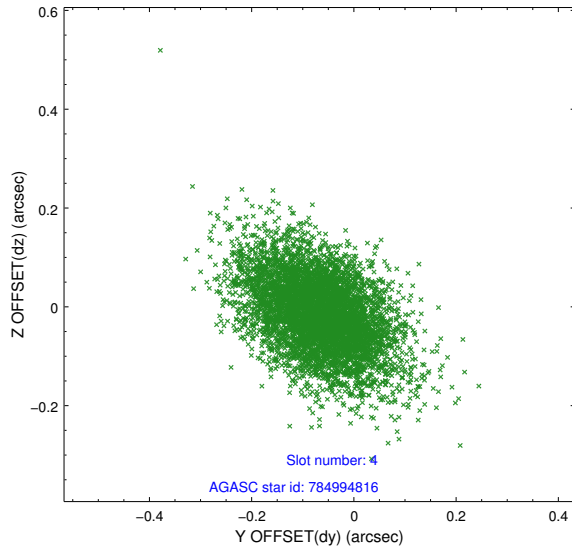
slot	status	used	id	mag	n_pts	med_dy	med_dz	dr1	dr2	ra	dec	mean_y	mean_z
0	FID		ACIS-I-1	7.10	2482	0.017	-0.005	0.008	0.014	0.000000	0.000000	937.41	-838.40
1	FID		ACIS-I-4	7.05	2482	0.164	0.019	0.007	0.013	0.000000	0.000000	2157.85	1061.20
2	FID		ACIS-I-5	7.07	2481	-0.279	0.057	0.007	0.012	0.000000	0.000000	-1810.26	1059.58
3	GUIDE	used	784992040	9.18	4956	0.329	0.107	0.164	0.261	116.769991	-18.855070	-114.92	-2232.68
4	GUIDE	used	784994816	9.07	4962	-0.065	-0.016	0.111	0.189	116.505488	-19.434301	1854.67	-1102.87
5	GUIDE	used	784996816	8.24	4962	-0.049	0.145	0.091	0.163	117.450793	-18.934282	-1795.76	-610.55
6	GUIDE	used	785000528	6.90	4961	-0.123	-0.089	0.097	0.170	116.828383	-19.401048	904.67	-541.39
7	GUIDE	used	785006264	8.43	4962	-0.084	-0.150	0.107	0.185	116.941738	-19.984718	1859.51	1369.53

2.4 Star Slots

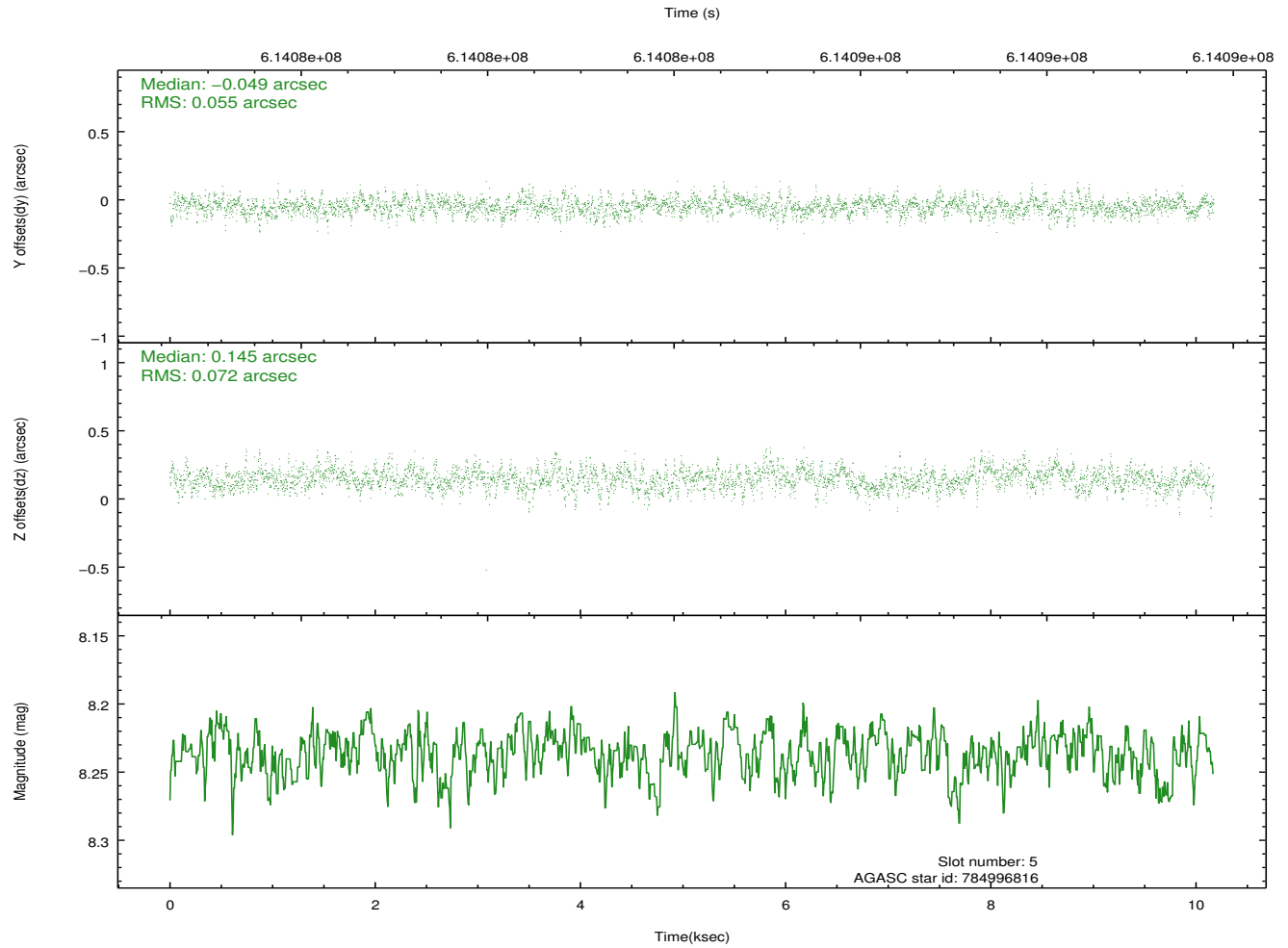
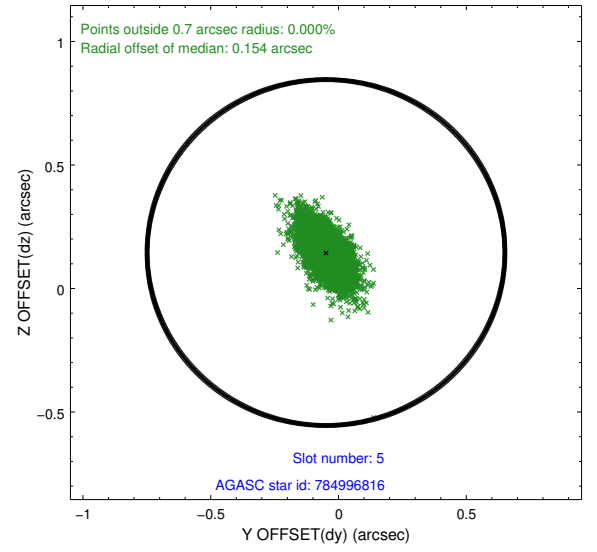
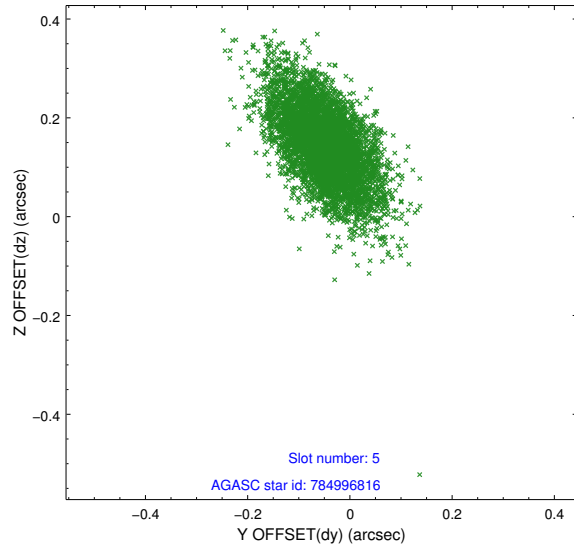
2.4.1 Slot 3



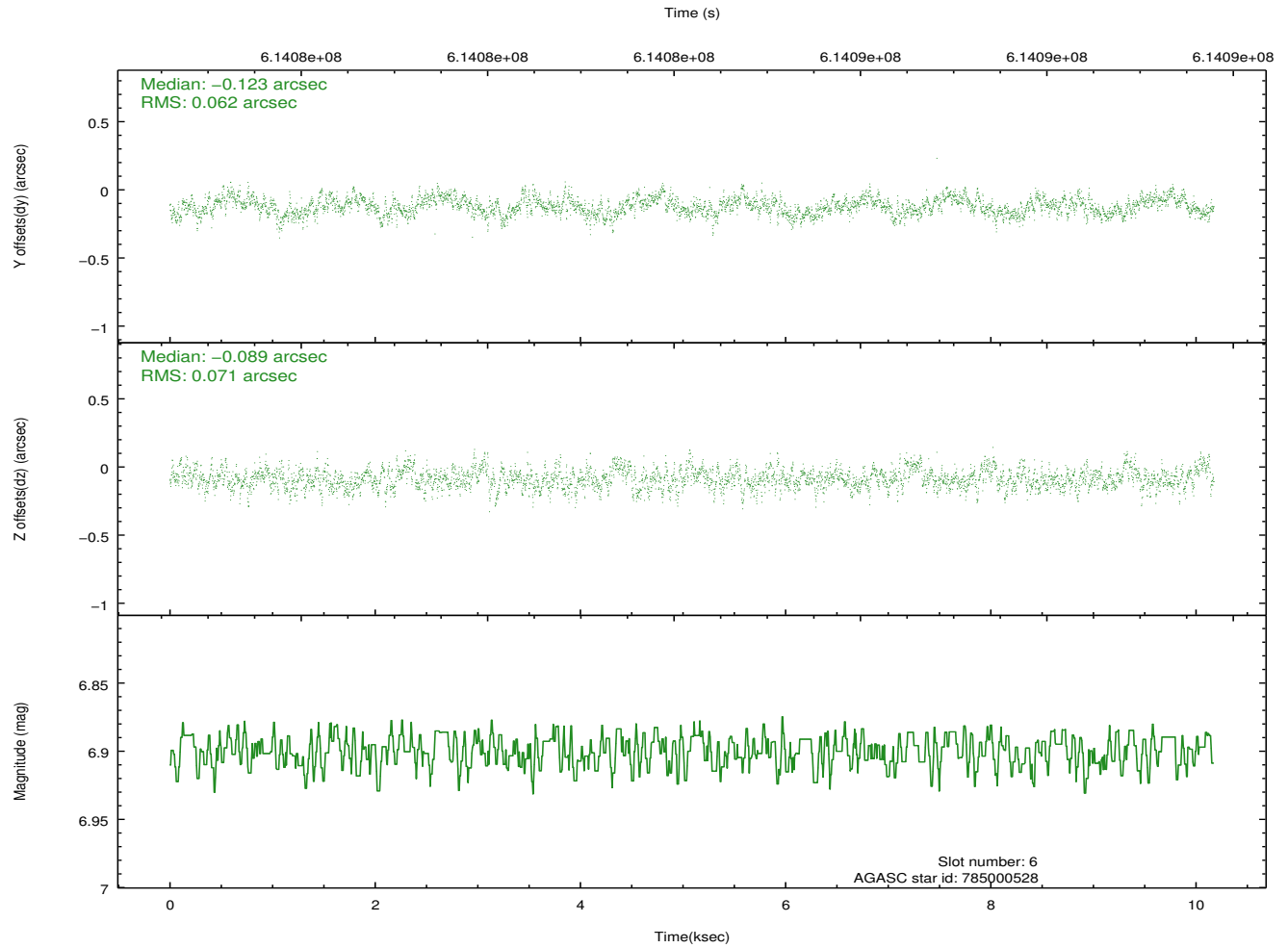
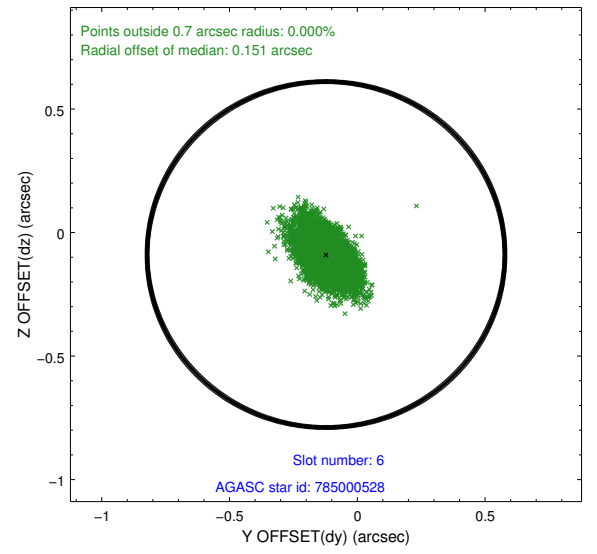
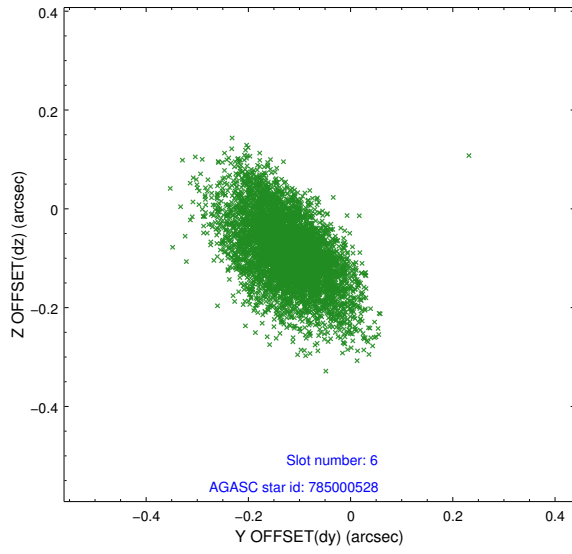
2.4.2 Slot 4



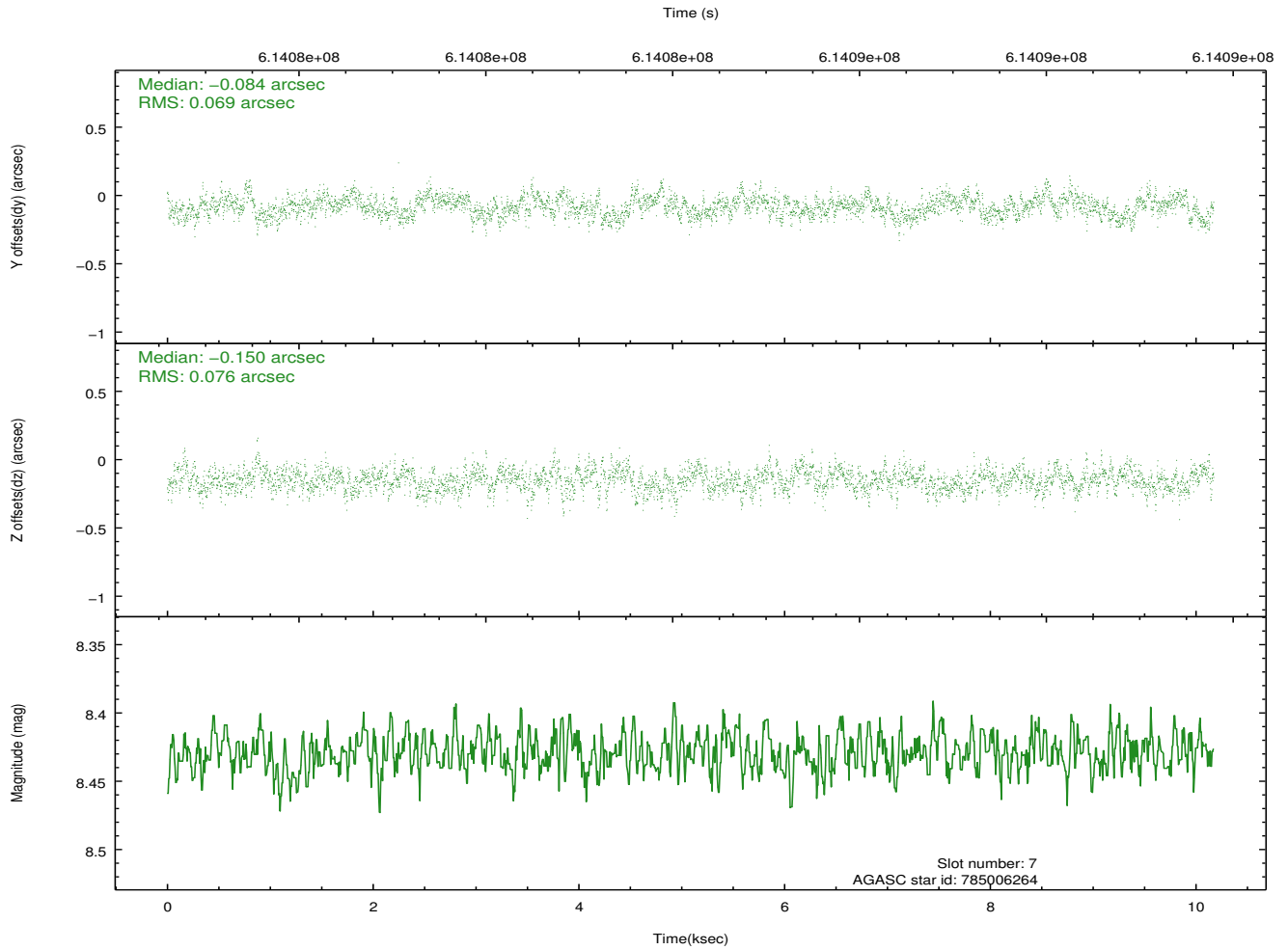
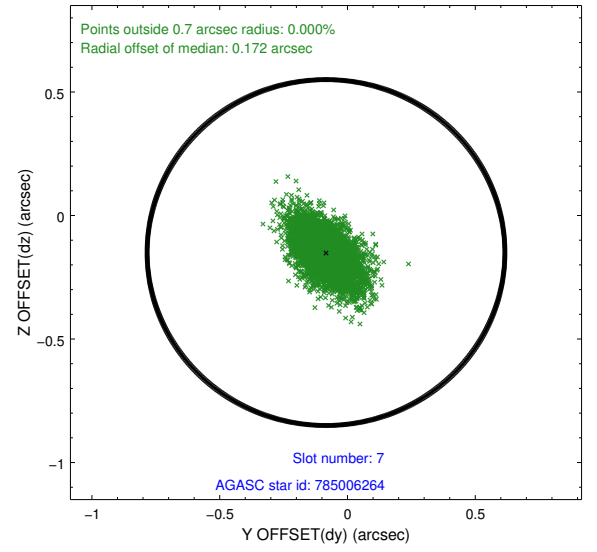
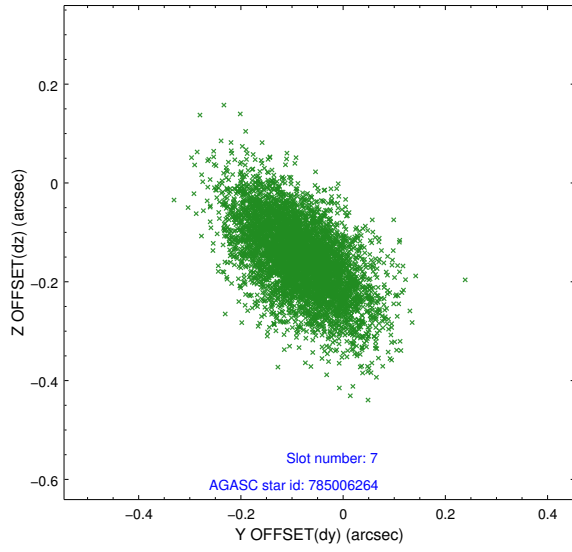
2.4.3 Slot 5



2.4.4 Slot 6

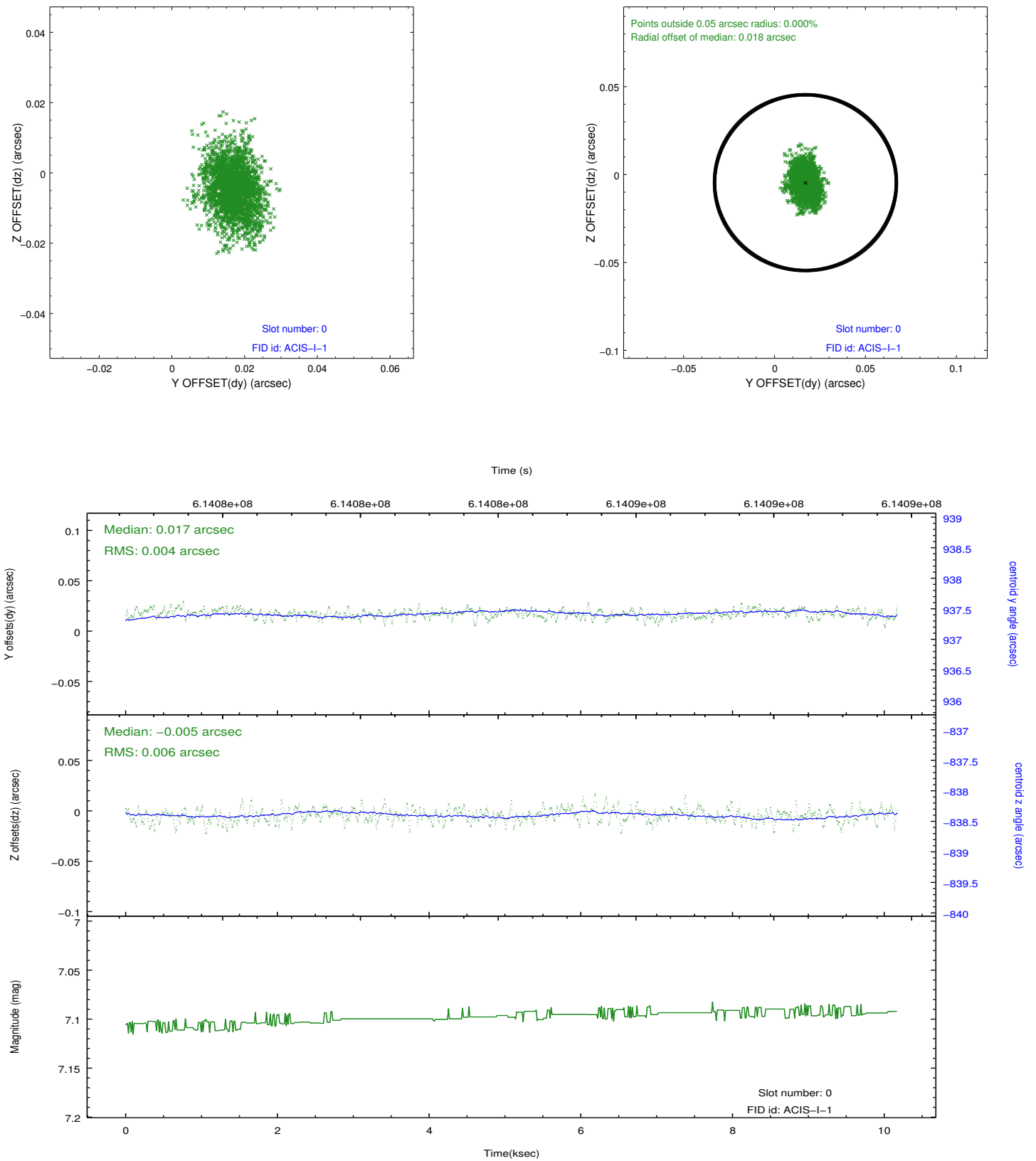


2.4.5 Slot 7

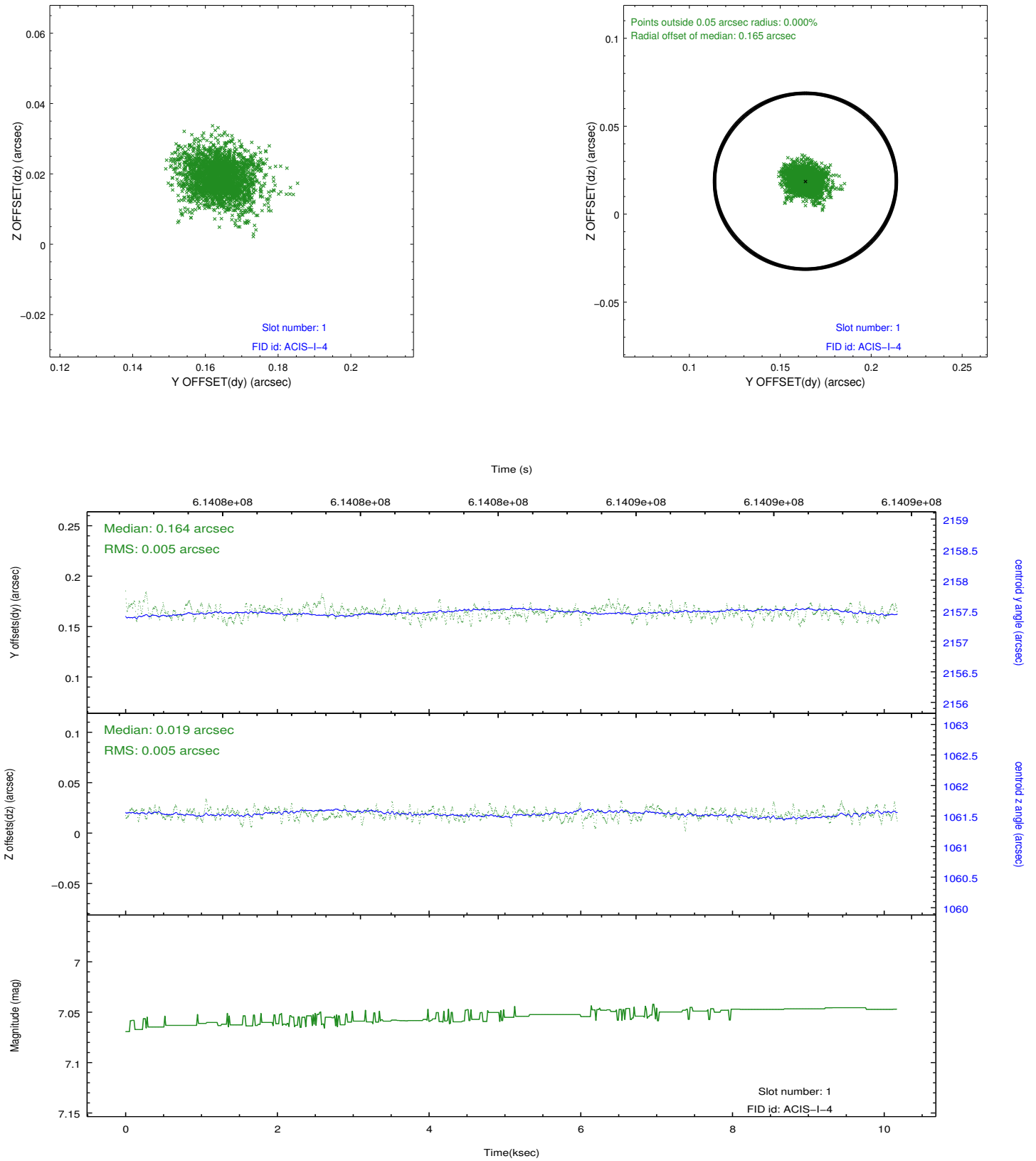


2.5 FID Slots

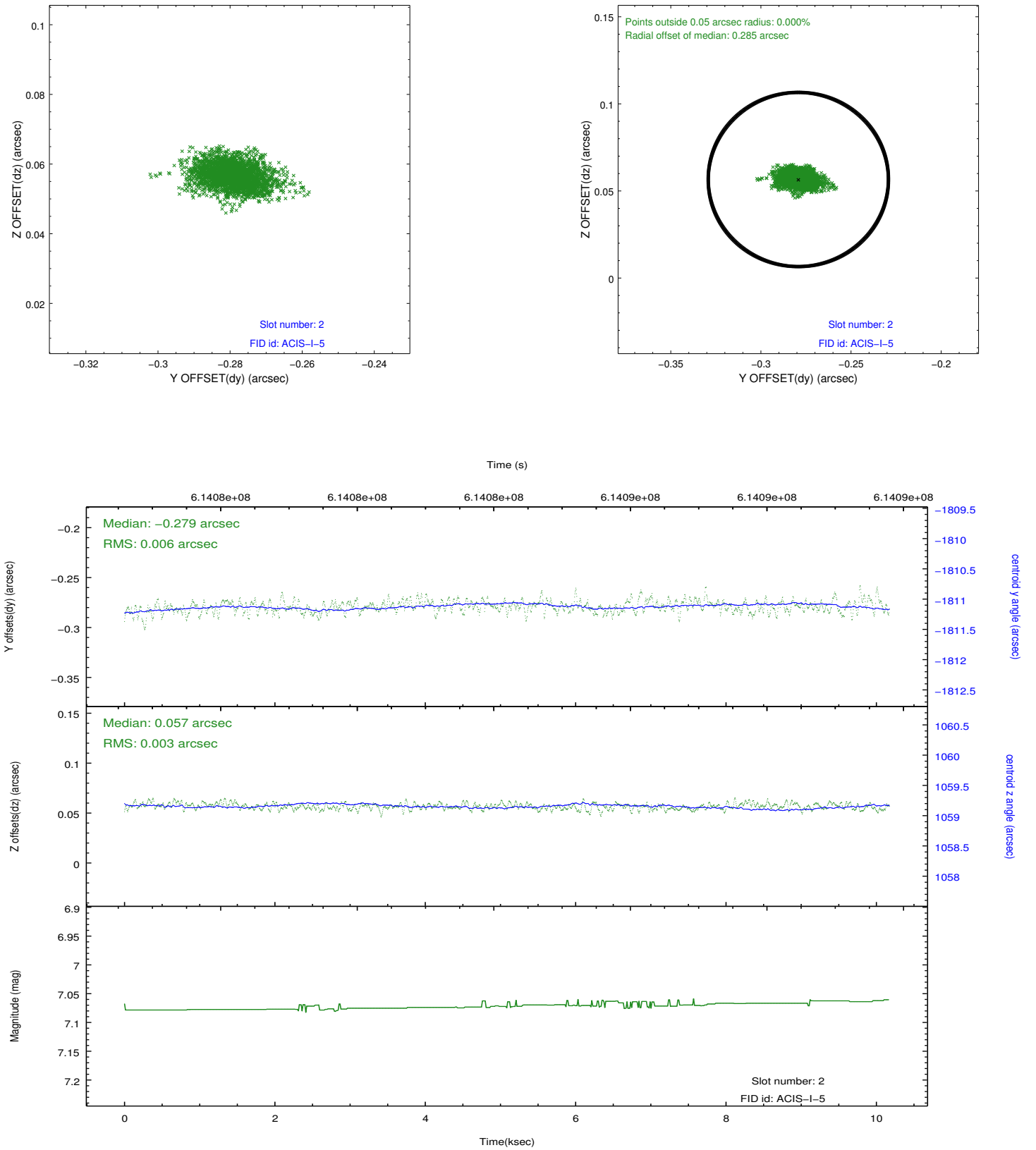
2.5.1 Slot 0



2.5.2 Slot 1



2.5.3 Slot 2



A Summary

A.1 Status

V&V Scientist	Beth Sundheim
V&V Date (YYYY-MM-DD)	2017.06.18
V&V Edition	1
V&V Disposition and Status	OK
V&V Charge Time	9.7765789757967

A.2 Comments