

V&V Reference Report

L2 ASCDS Version : 10.5.2

Observation 18771 - L2 Version 1
Chandra X-Ray Center

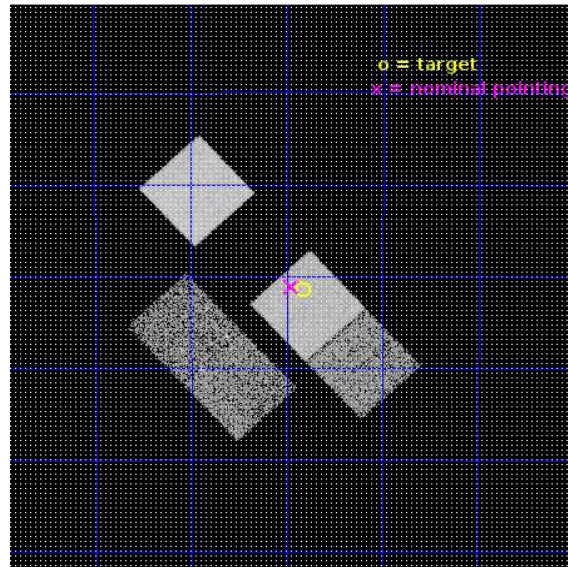
L2 Processing Date : Nov 14 2016

Contents

1	Front	2
2	OBI	3
2.1	OBI	3
2.1.1	Images	3
2.1.2	Bias	3
2.1.3	Parameters	4
2.1.4	Events	4
2.2	Compared Parameters	5
2.3	Aspect	6
2.4	Star Slots	9
2.4.1	Slot 3	9
2.4.2	Slot 4	10
2.4.3	Slot 5	11
2.4.4	Slot 6	12
2.4.5	Slot 7	13
2.5	FID Slots	14
2.5.1	Slot 0	14
2.5.2	Slot 1	15
2.5.3	Slot 2	16
A	Summary	17
A.1	Status	17
A.2	Comments	17

1 Front

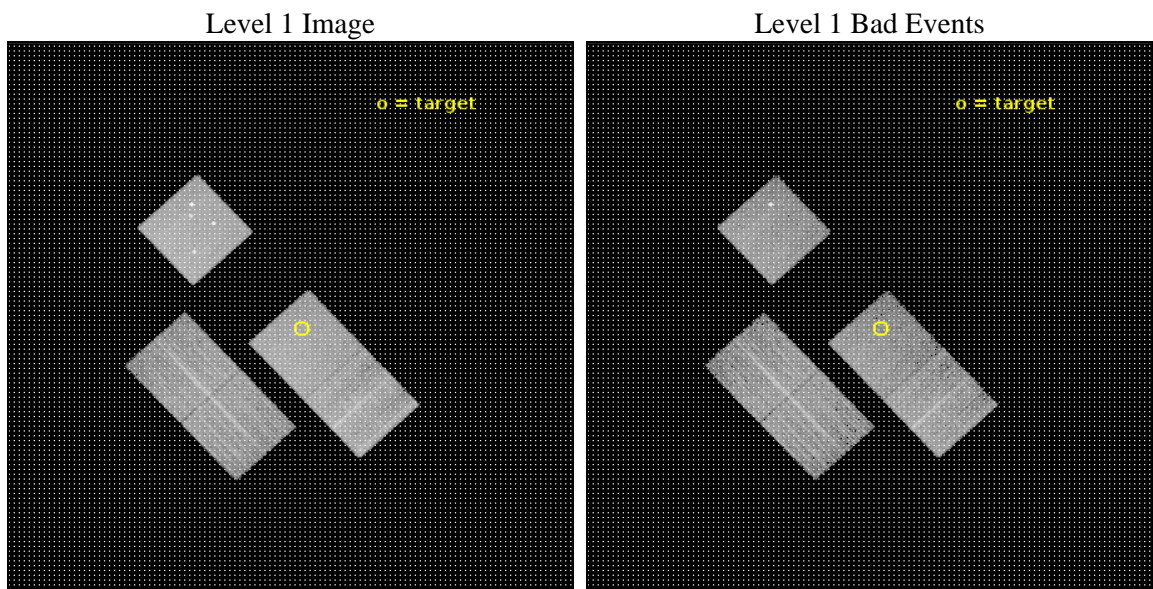
seq_num	801646	Sequence number
obs_id	18771	Observation id
title	Probing the extreme mass peaks at $z>0.7$	Proposal title
observer	Monique ARNAUD	Principal investigator
object	PSZ1 G254.58-32.16	Source name
dtcycle	0	
cycle	P	events from which exps? Prim/Second/Both
ra_targ	83.957782	Observer's specified target RA [deg]
dec_targ	-48.025361	Observer's specified target Dec [deg]
ra_nom	83.987931928812	Nominal RA [deg]
dec_nom	-48.018909240622	Nominal Dec [deg]
roll_nom	47.17902498893	Nominal Roll [deg]
revision	1	Processing version of data
ontime	10050.200077415	Sum of GTIs [s]
livetime	9918.8868145534	Livetime [s]
ontime2	10050.200077415	Sum of GTIs [s]
ontime3	10050.200077415	Sum of GTIs [s]
ontime5	10050.200077415	Sum of GTIs [s]
ontime7	10050.200077415	Sum of GTIs [s]
ontime8	10050.200077415	Sum of GTIs [s]
l2events	109775	Number of level 2 events



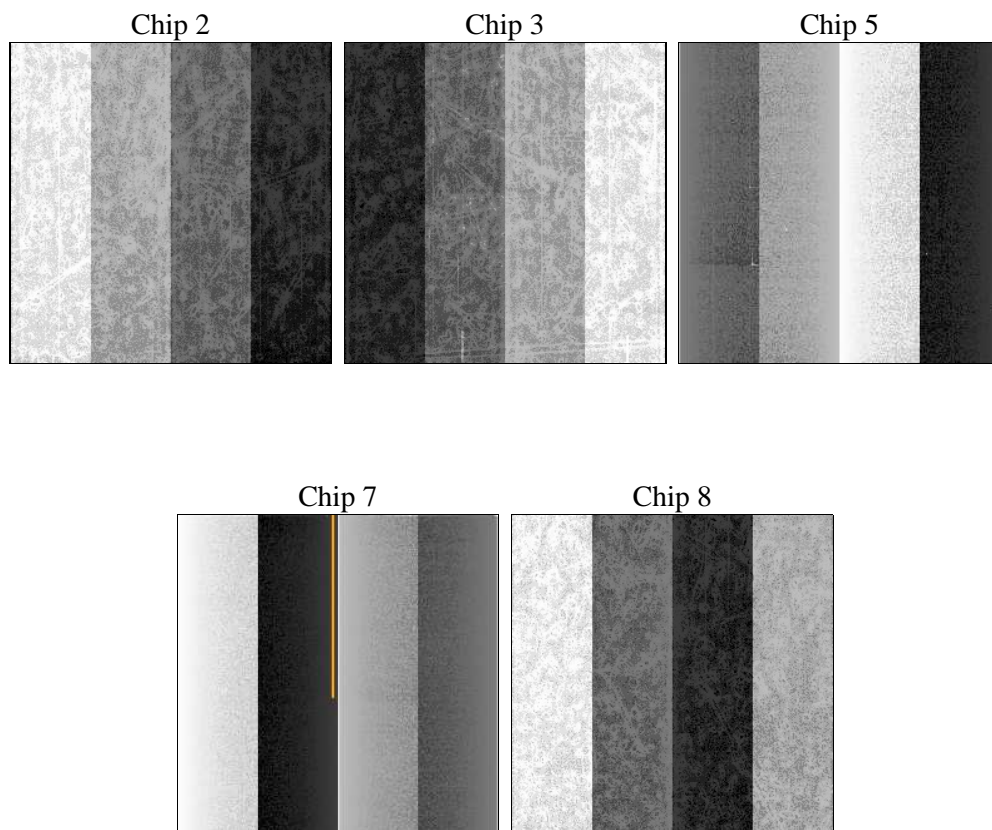
2 OBI

2.1 OBI

2.1.1 Images



2.1.2 Bias



2.1.3 Parameters

obi_num	0	Obi number	sched_exp_time	10000.000000	[s] Scheduled observation exposure time
ascdsver	10.5.2	Processing system revision	ontime	10050.200077415	Sum of GTIs [s]
caldsver	4.7.2	 	ontime2	10050.200077415	Sum of GTIs [s]
date	2016-11-14T20:37:15	Date and time of file creation	ontime3	10050.200077415	Sum of GTIs [s]
revision	1	Processing version of data	ontime5	10050.200077415	Sum of GTIs [s]
			ontime7	10050.200077415	Sum of GTIs [s]
			ontime8	10050.200077415	Sum of GTIs [s]
			l1events	435978	Number of level 1 events

2.1.4 Events

	ccd 2	ccd 3	ccd 5	ccd 7	ccd 8
level 1 events	68779	68810	115481	88580	94328
rejected events	61325	61206	58955	49745	68551
rejected %	89%	88%	51%	56%	72%

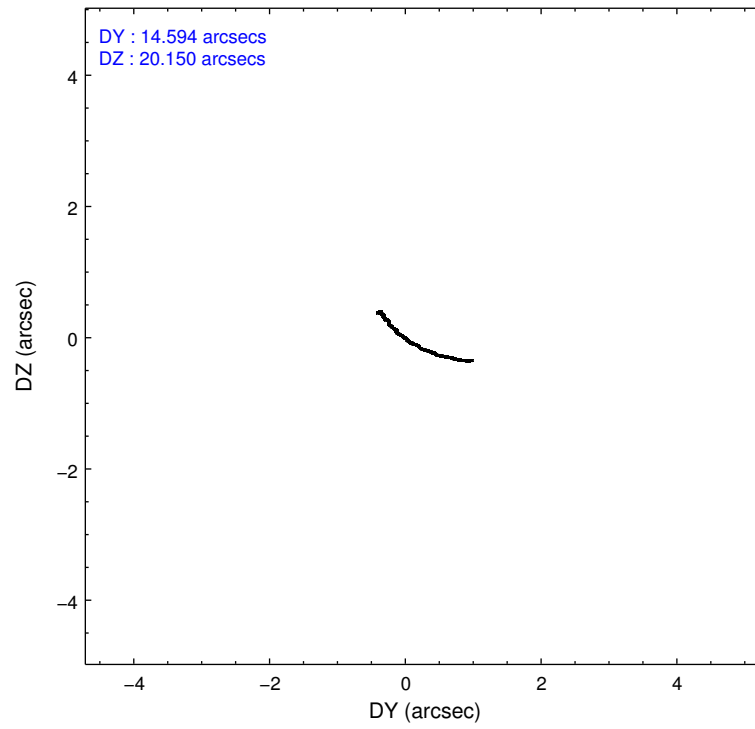
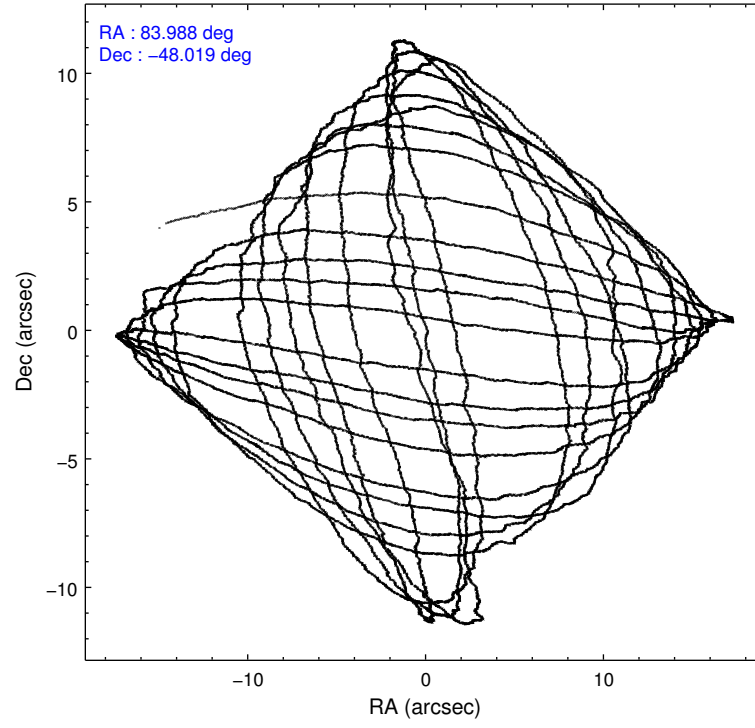
	ccd 2	ccd 3	ccd 5	ccd 7	ccd 8
grade 0 events	2621	2978	7327	3497	7555
	3%	4%	6%	3%	8%
grade 1 events	42	38	221	128	60
	0%	0%	0%	0%	0%
grade 2 events	1894	1626	17138	8166	6241
	2%	2%	14%	9%	6%
grade 3 events	742	746	1731	3165	2700
	1%	1%	1%	3%	2%
grade 4 events	790	761	1691	3121	2450
	1%	1%	1%	3%	2%
grade 5 events	2677	3229	8025	8895	4973
	3%	4%	6%	10%	5%
grade 6 events	1409	1496	28664	20905	6867
	2%	2%	24%	23%	7%
grade 7 events	58604	57936	50684	40703	63482
	85%	84%	43%	45%	67%

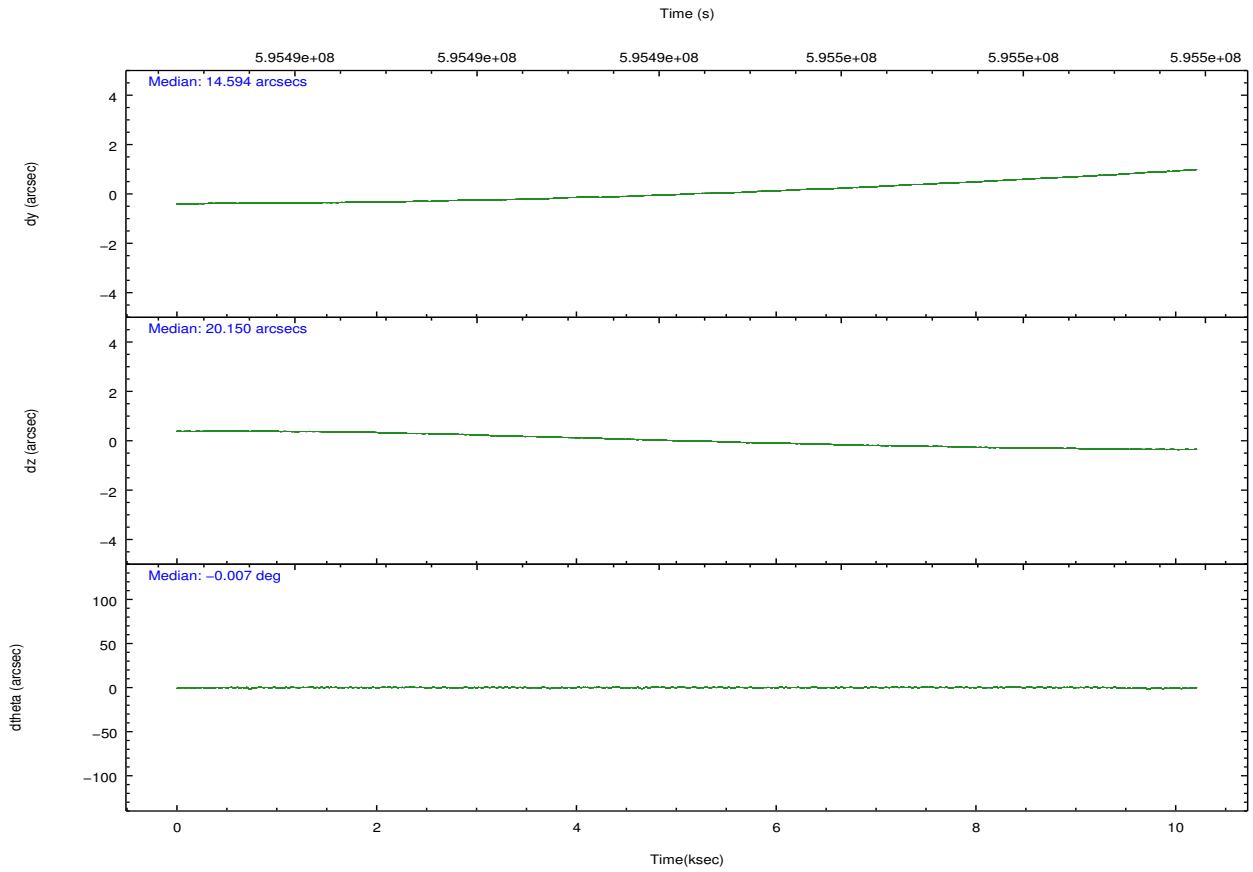
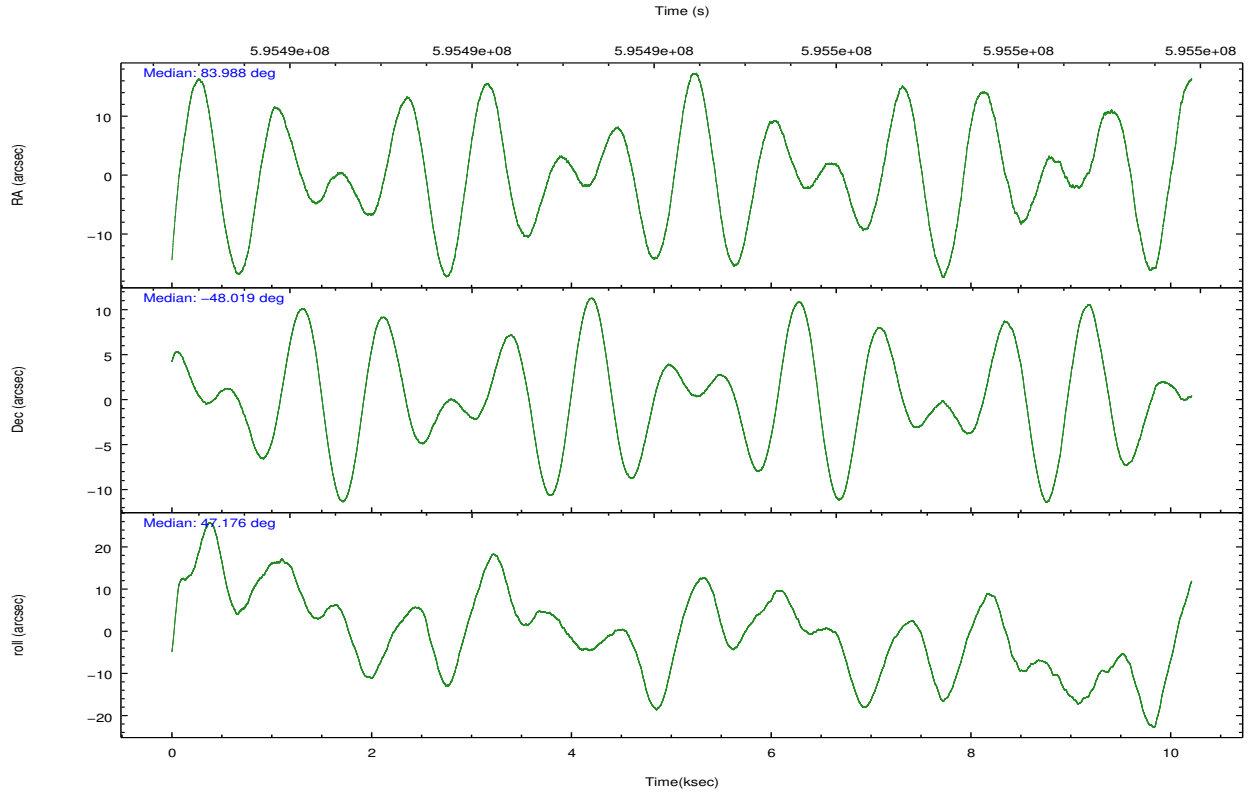
2.2 Compared Parameters

Parameter	Planned	Actual
Instrument	ACIS	ACIS
Detector	ACIS-23578	ACIS-23578
Grating	NONE	NONE
Data mode	VFAINT	VFAINT
Observation mode	POINTING	POINTING
[deg] Pointing RA	83.979295	83.987931928812
[deg] Pointing Dec	-48.045759	-48.01890924062191
[deg] Pointing Roll	47.015992	47.17902498893045
[mm] SIM focus pos	-0.684267	-0.6828225247311905
[mm] SIM defocus	0	0.001444936568705701
[mm] SIM translation stage pos	-190.132523	-190.1425803651734
[mm] SIM translation stage offset	0	0.01005778216563158
[s] Observation start time (MET)	595489405.184000	595488450.12486
Observation start date	2016-11-14T05:42:17	2016-11-14T05:27:30
[s] Observation end time (MET)	595499405.184000	595500549.2255599
Observation end date	2016-11-14T08:28:57	2016-11-14T08:49:09
Read mode	TIMED	TIMED

Parameter	Planned	Actual
Obspar format version number	7	7
Obspar file type	PREDICTED	ACTUAL
Obspar update status	NONE	UPDATED
CCD I0 on	N	N
CCD I1 on	N	N
CCD I2 on	O1	Y
CCD I3 on	Y	Y
CCD S0 on	N	N
CCD S1 on	Y	Y
CCD S2 on	N	N
CCD S3 on	Y	Y
CCD S4 on	Y	Y
CCD S5 on	N	N
Number of optional ACIS chips dropped	0	0
On-chip summing requested	N	N
Subarray requested	NONE	NONE
Alternating exposures requested	N	N
[s] Primary exposure time	0.000000	3.1

2.3 Aspect



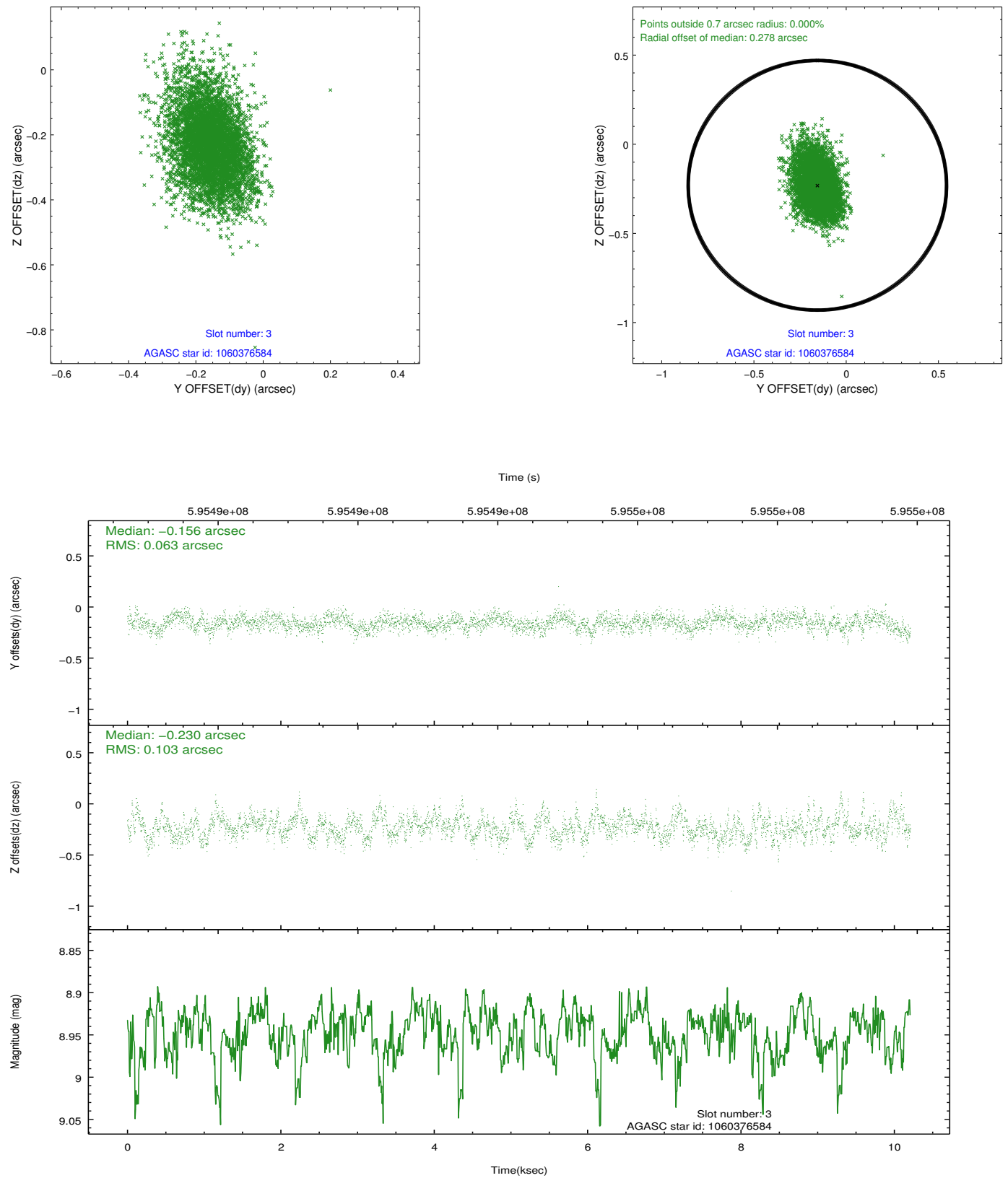


Slot Statistics

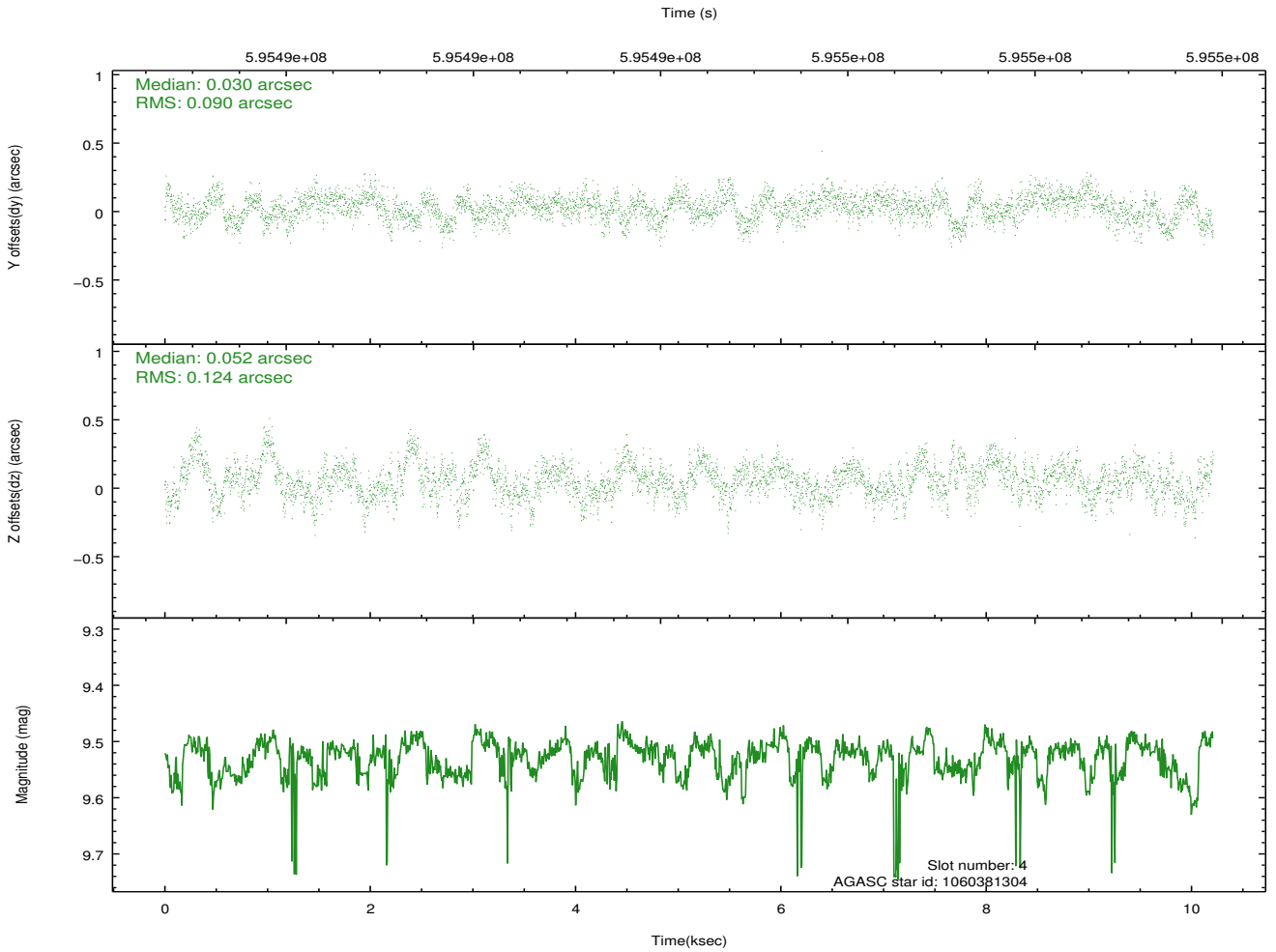
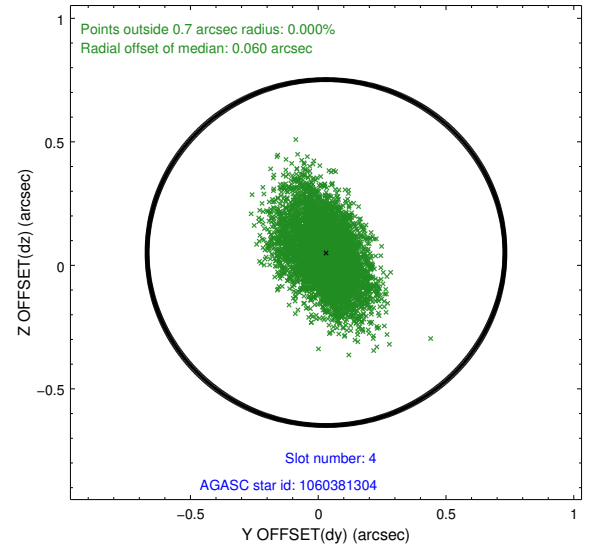
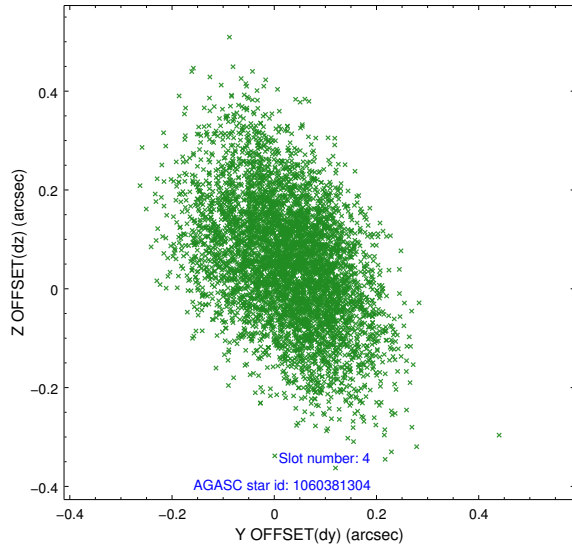
slot	status	used	id	mag	n_pts	med_dy	med_dz	dr1	dr2	ra	dec	mean_y	mean_z
0	FID		ACIS-S-1	7.06	2491	0.013	-0.046	0.012	0.023	0.000000	0.000000	928.45	-1737.28
1	FID		ACIS-S-4	7.07	2491	0.314	0.030	0.008	0.013	0.000000	0.000000	2146.38	166.45
2	FID		ACIS-S-5	7.08	2491	-0.354	0.028	0.008	0.019	0.000000	0.000000	-1820.19	160.50
3	GUIDE	used	1060376584	8.95	4975	-0.156	-0.230	0.124	0.216	84.059833	-47.835030	686.87	374.12
4	GUIDE	used	1060381304	9.52	4976	0.030	0.052	0.160	0.272	83.091149	-48.192748	-1848.86	1190.72
5	GUIDE	used	1060382216	9.08	4981	0.034	-0.086	0.154	0.259	83.057685	-48.115964	-1704.92	1439.71
6	GUIDE	used	1060382296	7.60	4982	0.089	0.192	0.124	0.205	84.150756	-48.284639	-349.22	-886.38
7	GUIDE	used	1060515272	9.24	4974	0.010	0.060	0.151	0.257	84.681016	-47.841544	1688.48	-744.08

2.4 Star Slots

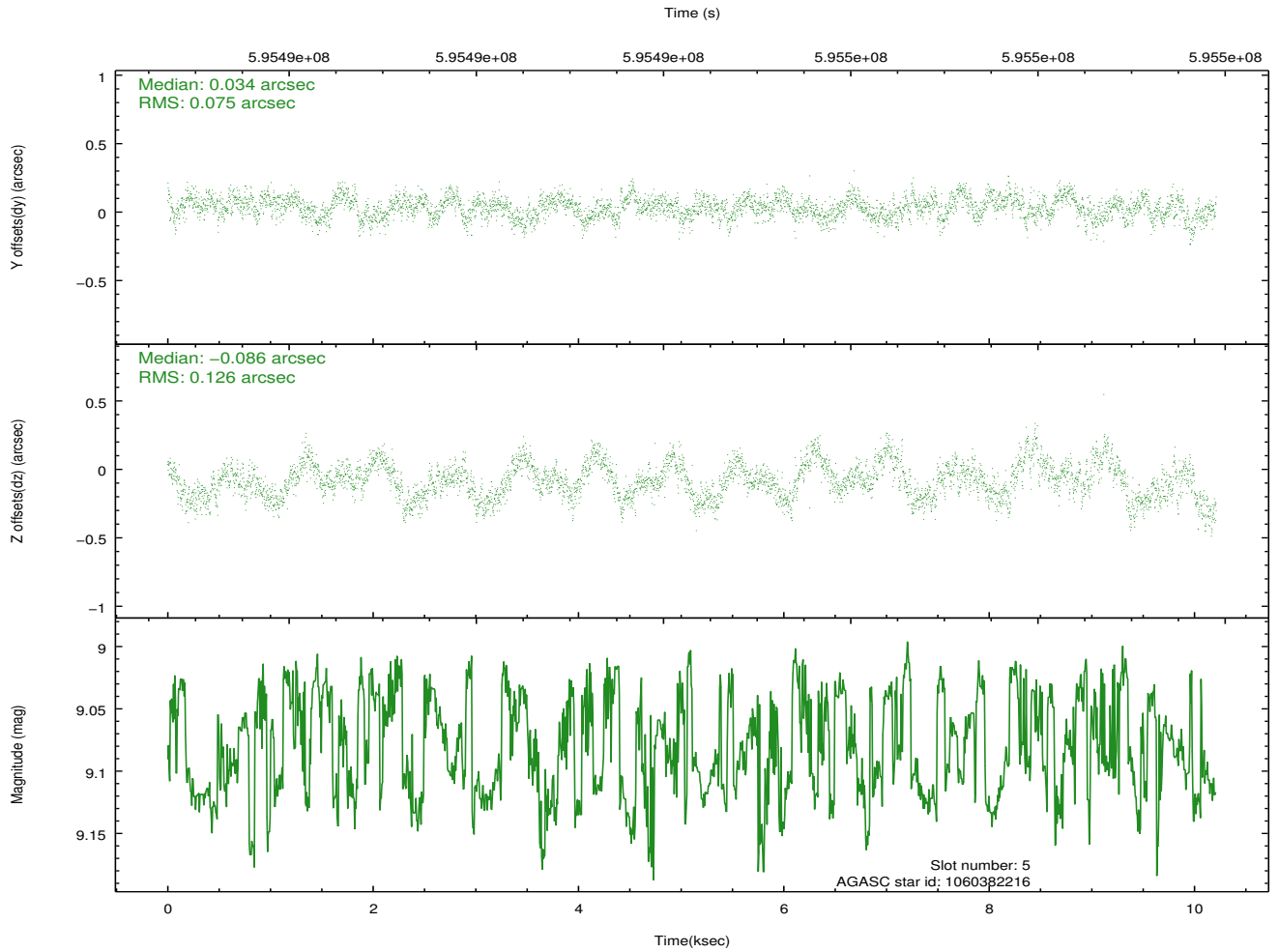
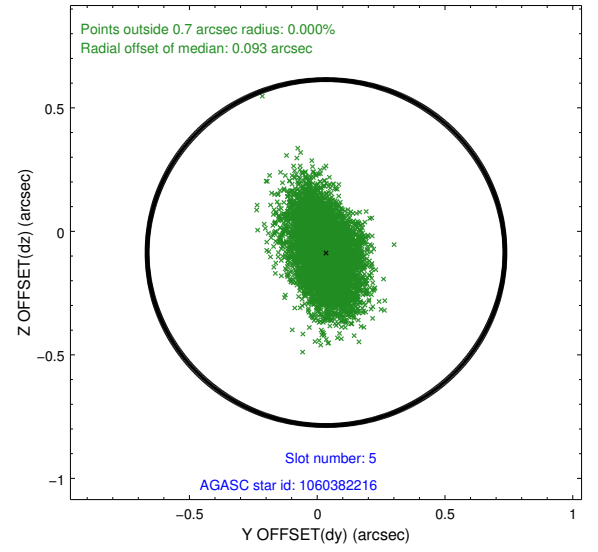
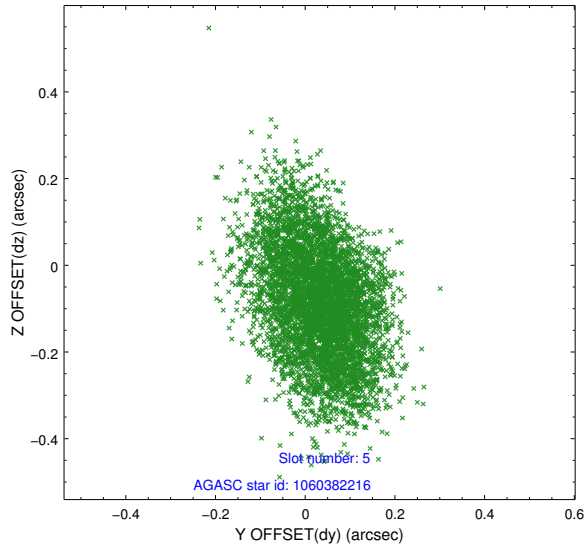
2.4.1 Slot 3



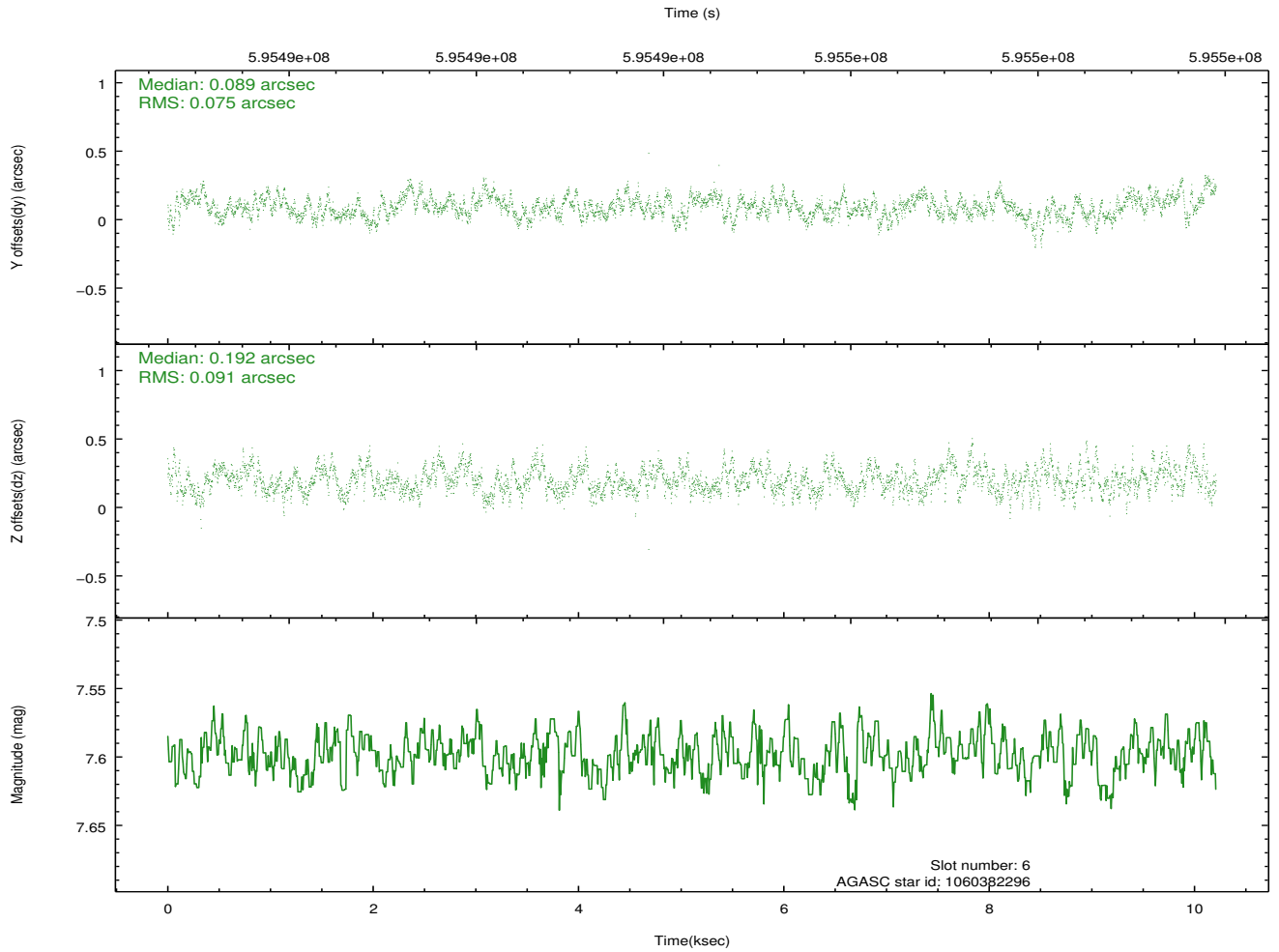
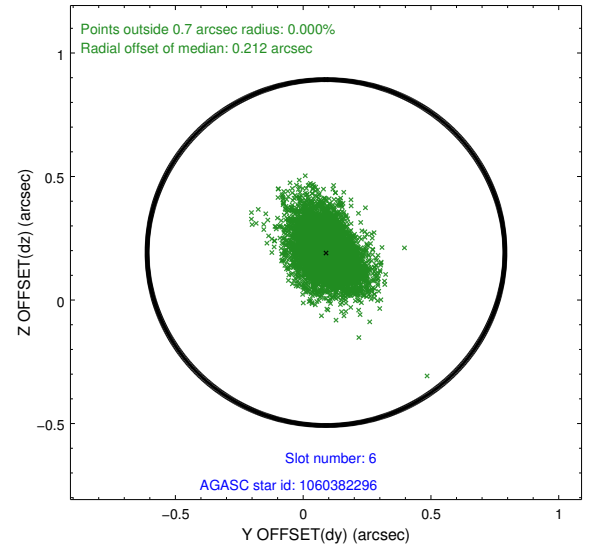
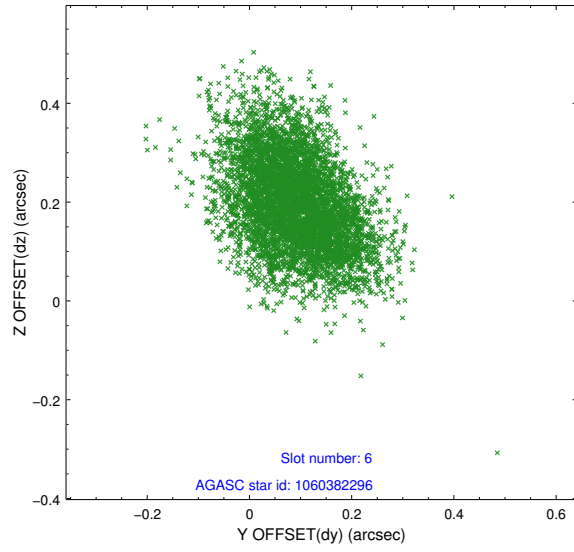
2.4.2 Slot 4



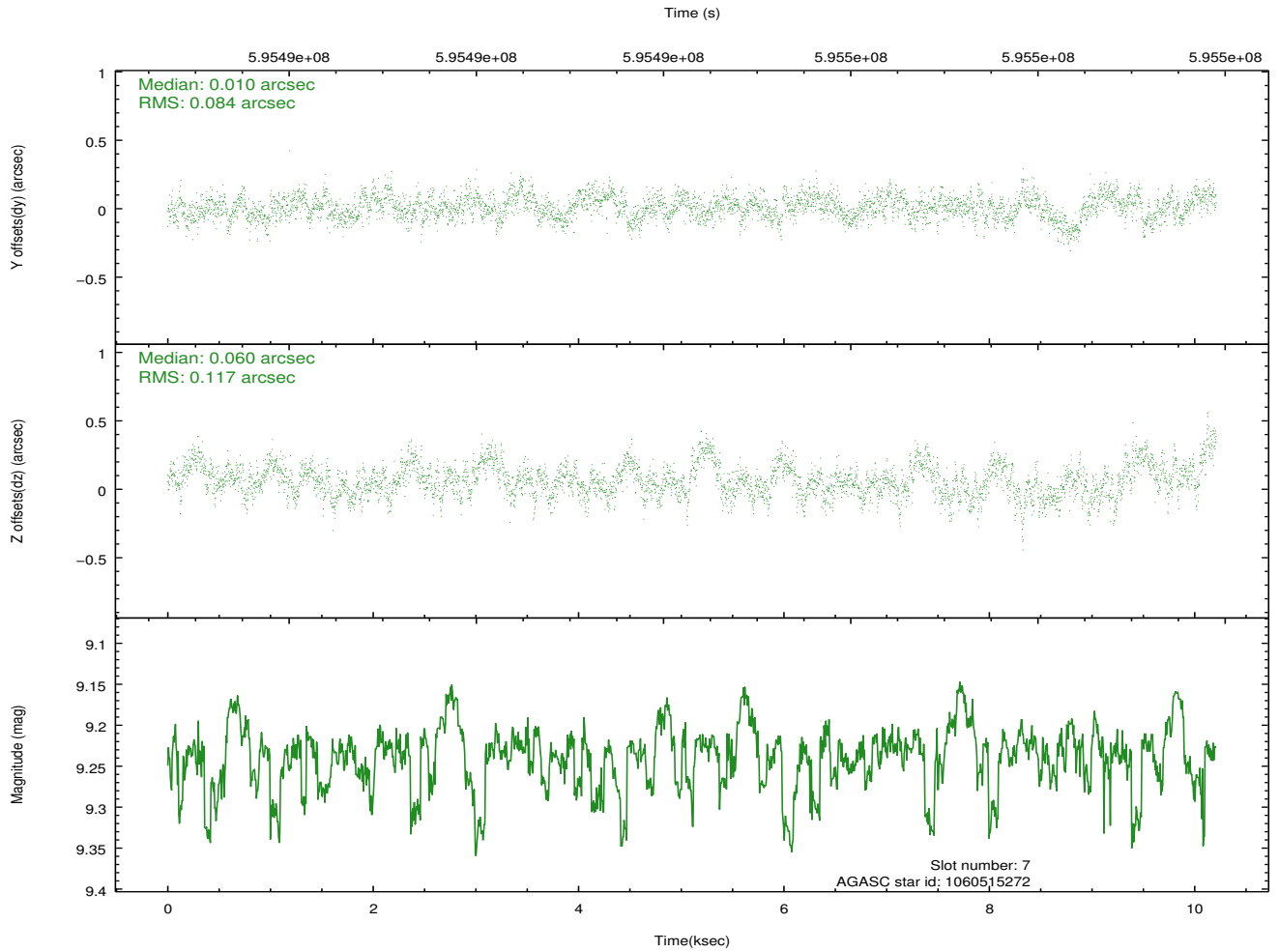
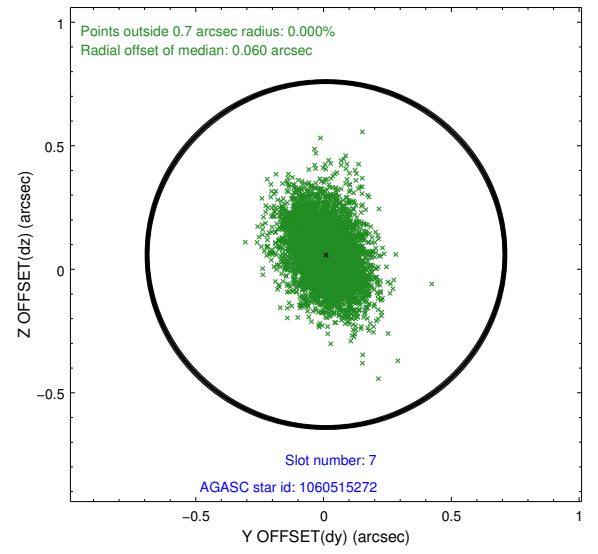
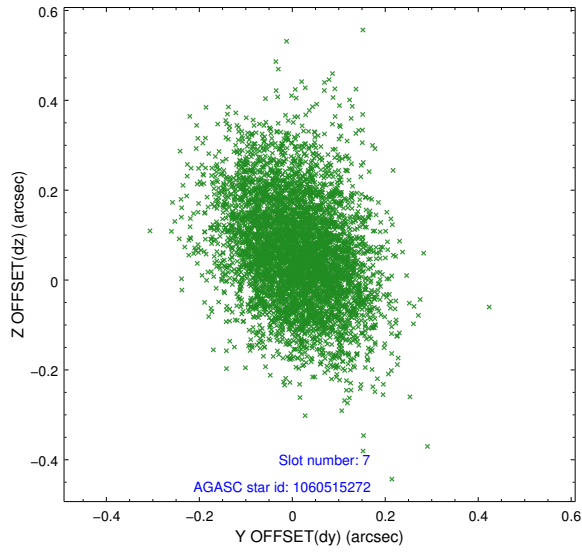
2.4.3 Slot 5



2.4.4 Slot 6

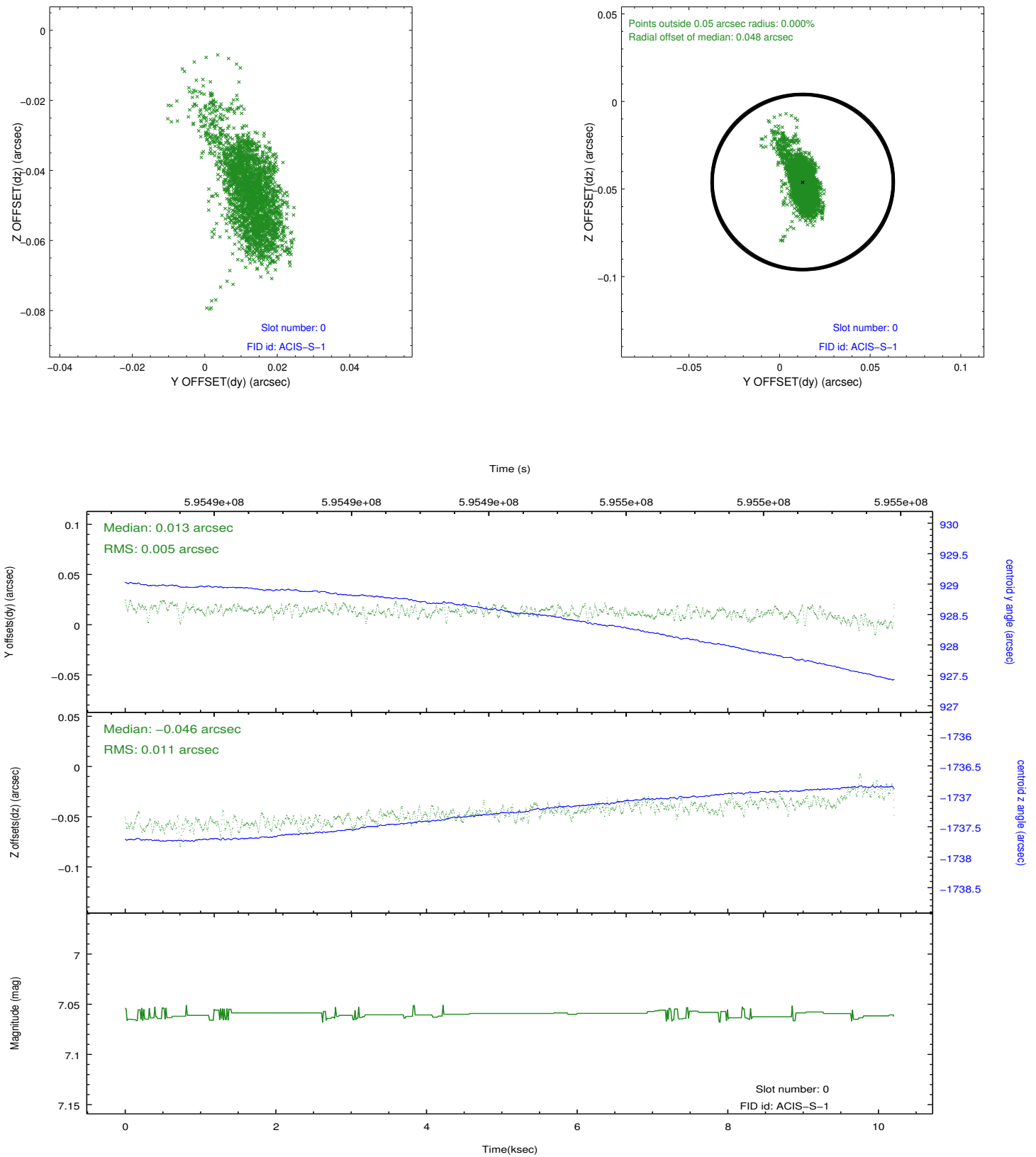


2.4.5 Slot 7

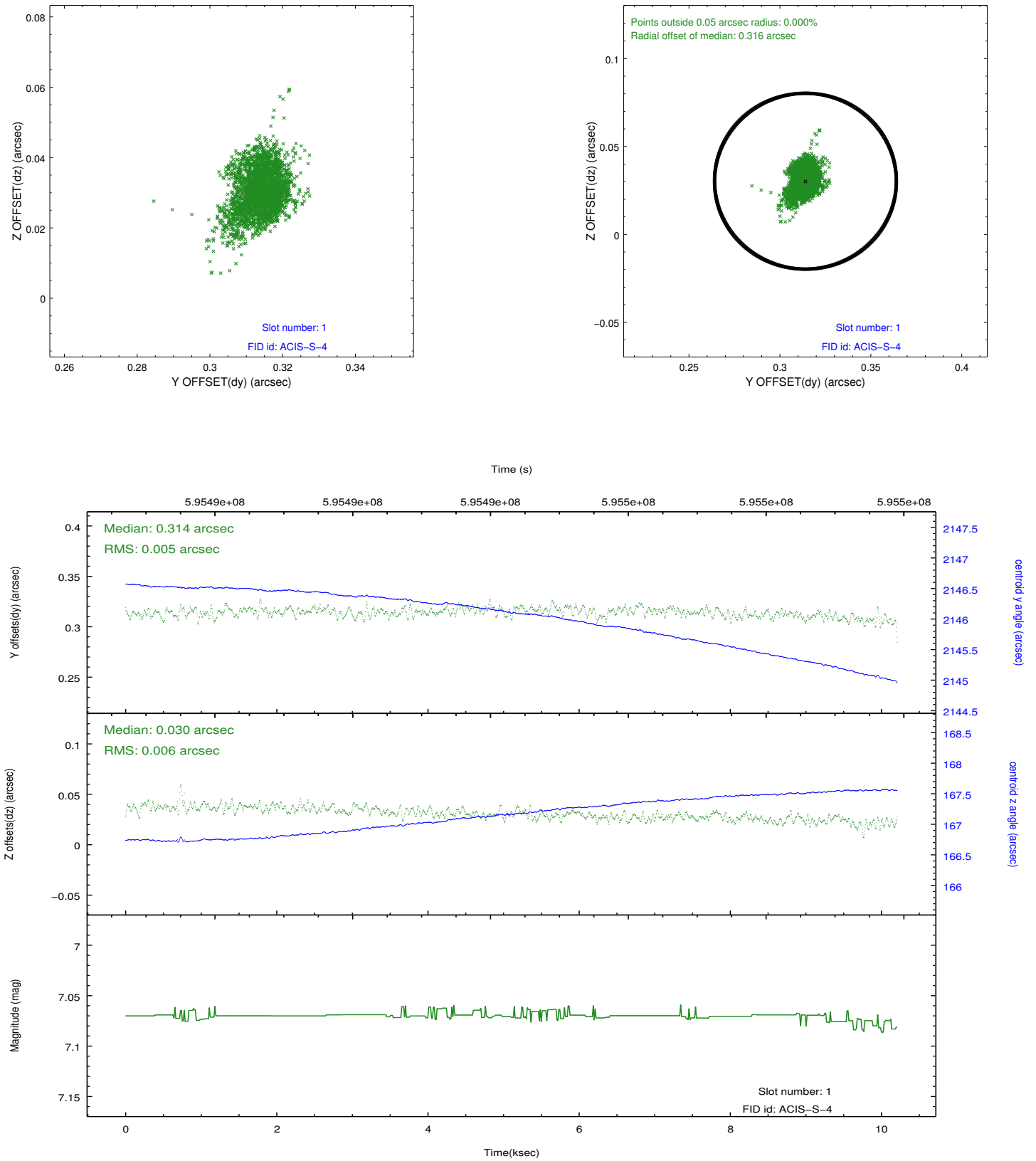


2.5 FID Slots

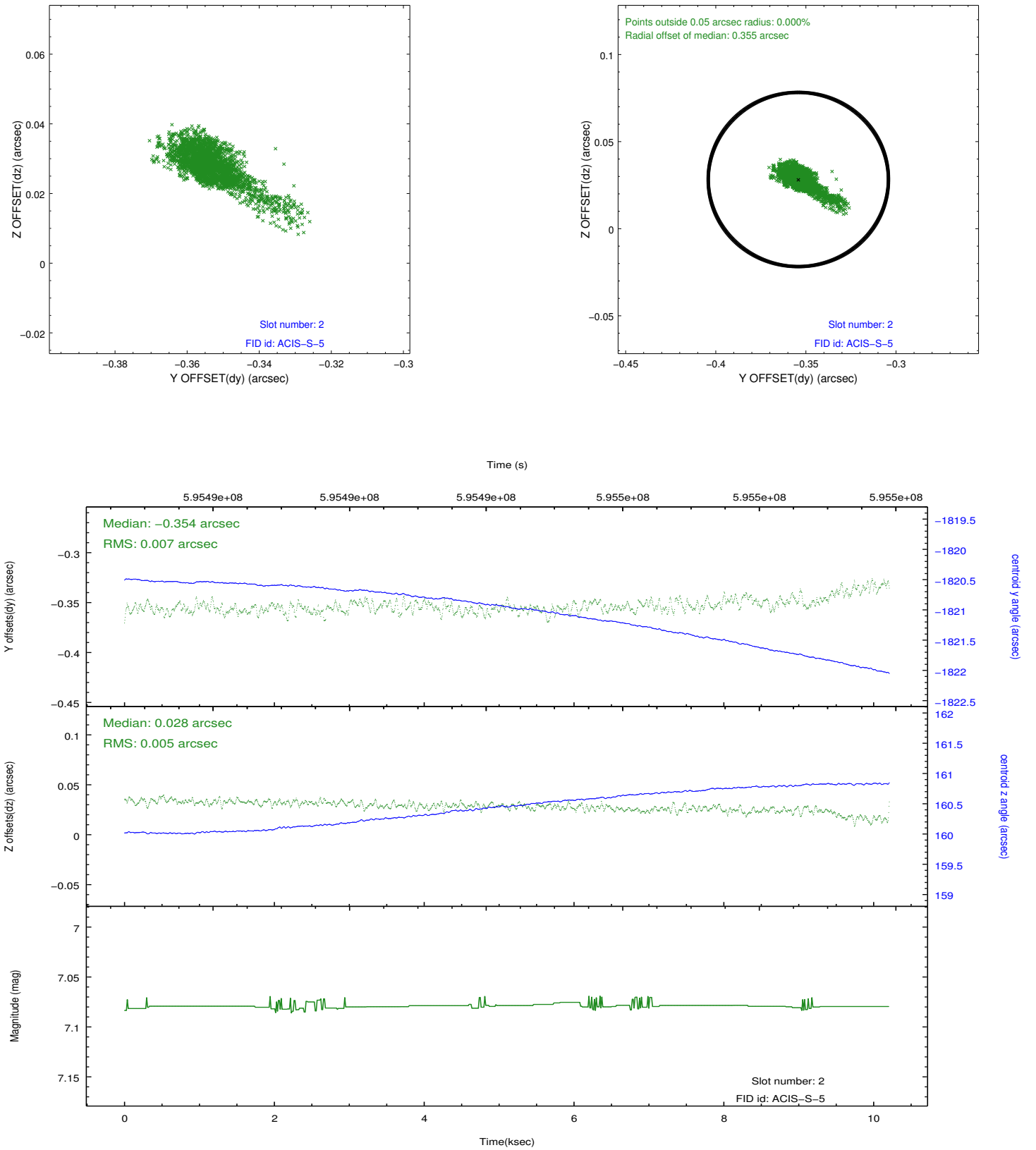
2.5.1 Slot 0



2.5.2 Slot 1



2.5.3 Slot 2



A Summary

A.1 Status

V&V Scientist	Beth Sundheim
V&V Date (YYYY-MM-DD)	2016.11.14
V&V Edition	1
V&V Disposition and Status	OK
V&V Charge Time	10.050200077415

A.2 Comments

Joint proposal with XMM.