

V&V Reference Report

L2 ASCDS Version : 10.6

Observation 20957 - L2 Version 1
Chandra X-Ray Center

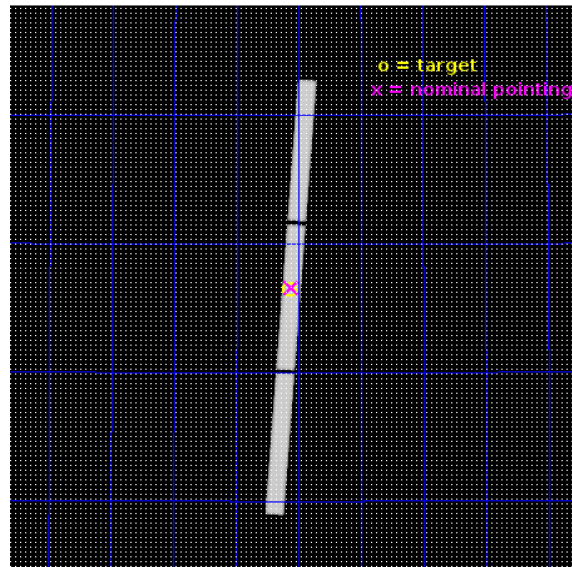
L2 Processing Date : Feb 12 2018

Contents

1	Front	2
2	OBI	3
2.1	OBI	3
2.1.1	Images	3
2.1.2	Parameters	4
2.1.3	Events	4
2.2	Compared Parameters	5
2.3	Aspect	6
2.4	Star Slots	9
2.4.1	Slot 3	9
2.4.2	Slot 4	10
2.4.3	Slot 5	11
2.4.4	Slot 6	12
2.4.5	Slot 7	13
2.5	FID Slots	14
2.5.1	Slot 0	14
2.5.2	Slot 1	15
2.5.3	Slot 2	16
3	Gratings	17
3.1	LETG Arm	17
A	Summary	19
A.1	Status	19
A.2	Comments	19

1 Front

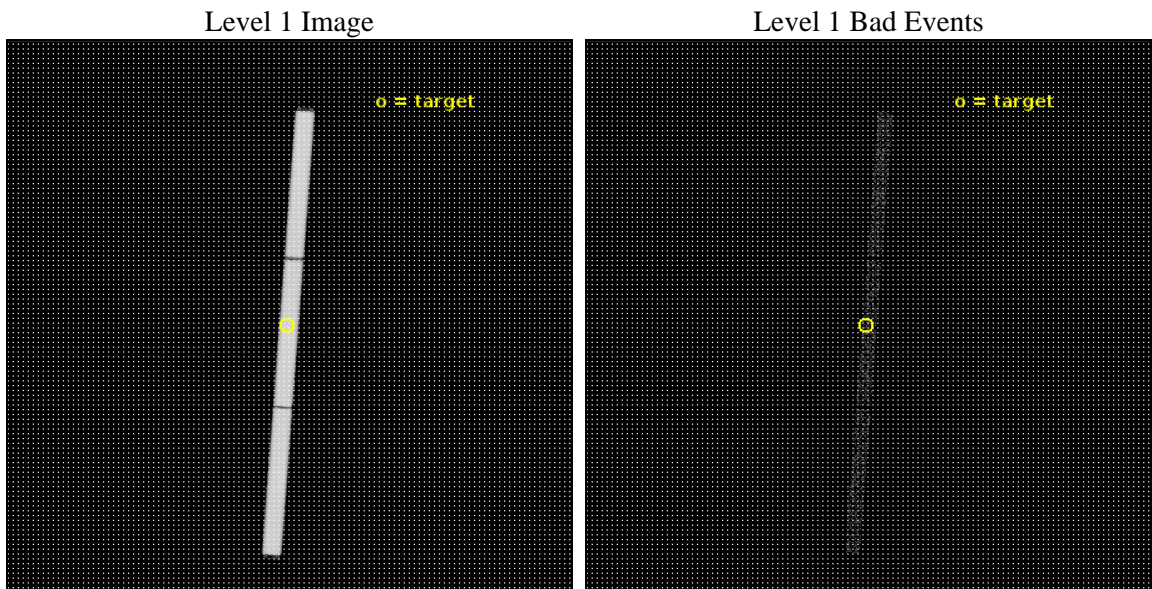
seq_num	703315	Sequence number
obs_id	20957	Observation id
title	Chandra observations of a unique X-ray WHIM absorber towards PG 1116+215	Proposal title
observer	Massimiliano Bonamente	Principal investigator
object	PG 1116+215	Source name
ra_targ	169.78625	Observer's specified target RA [deg]
dec_targ	21.321667	Observer's specified target Dec [deg]
ra_nom	169.77887994615	Nominal RA [deg]
dec_nom	21.329603019008	Nominal Dec [deg]
roll_nom	94.070018721005	Nominal Roll [deg]
revision	1	Processing version of data
ontime	15630.2259202	[s]
livetime	15476.917989127	Ontime multiplied by DTCOR
l2events	1363831	Number of level 2 events



2 OBI

2.1 OBI

2.1.1 Images



2.1.2 Parameters

obi_num	0	Obi number	sched_exp_time	15500.000000	[s] Scheduled observation exposure time
ascdsver	10.6	Processing system revision	ontime	15630.2259202	[s]
caldsver	4.7.7	 	l1events	1818214	Number of level 1 events
date	2018-02-12T23:45:00	Date and time of file creation	tgmethod	TGDETECT	Method used to create src1a file
revision	1	Processing version of data	zo_pos	(32579.13, 32545.45)	src1a sky pixel position

2.1.3 Events

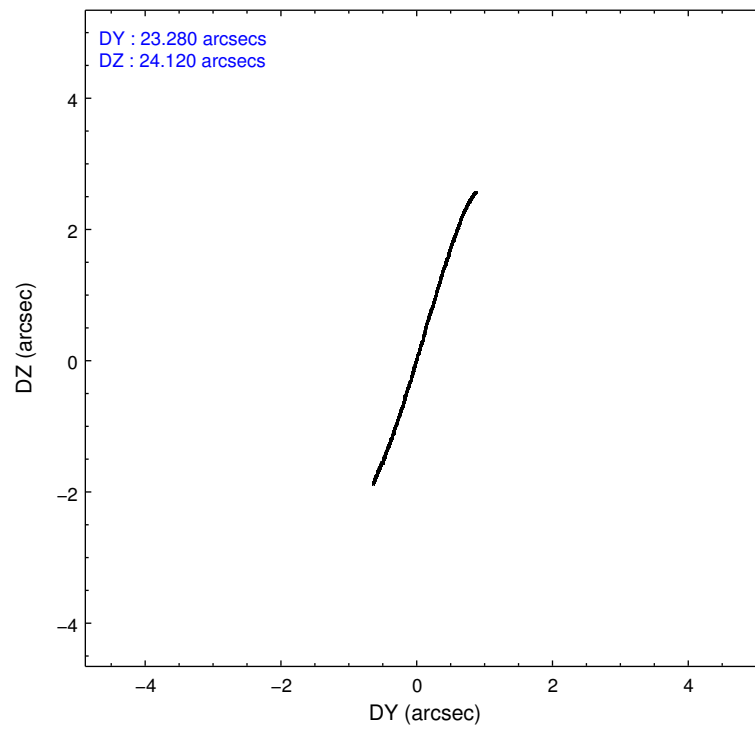
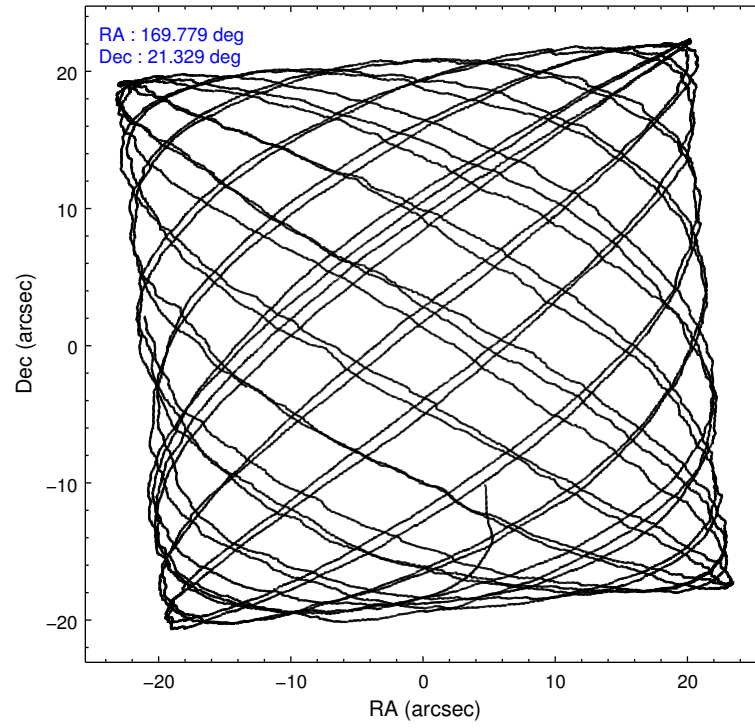
Level 1 Events

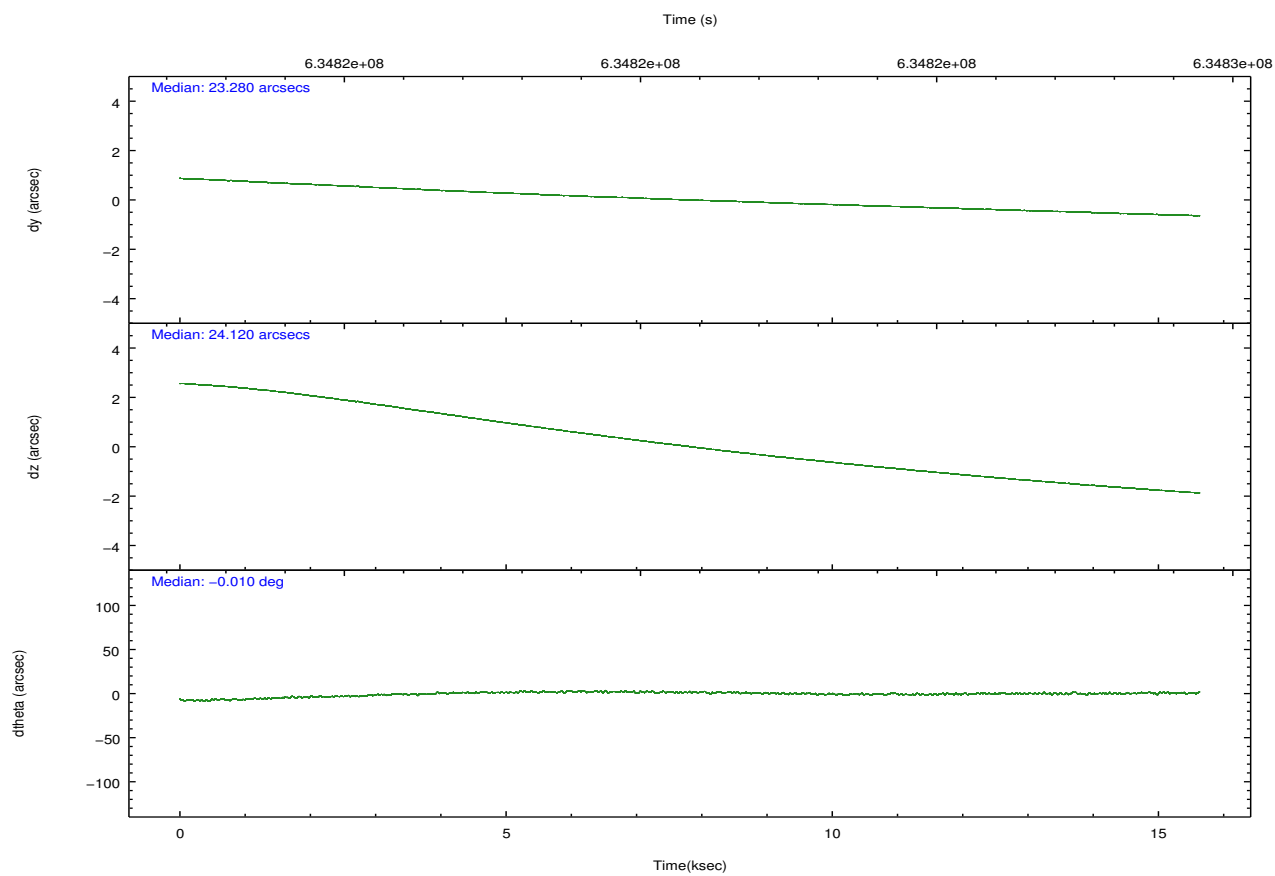
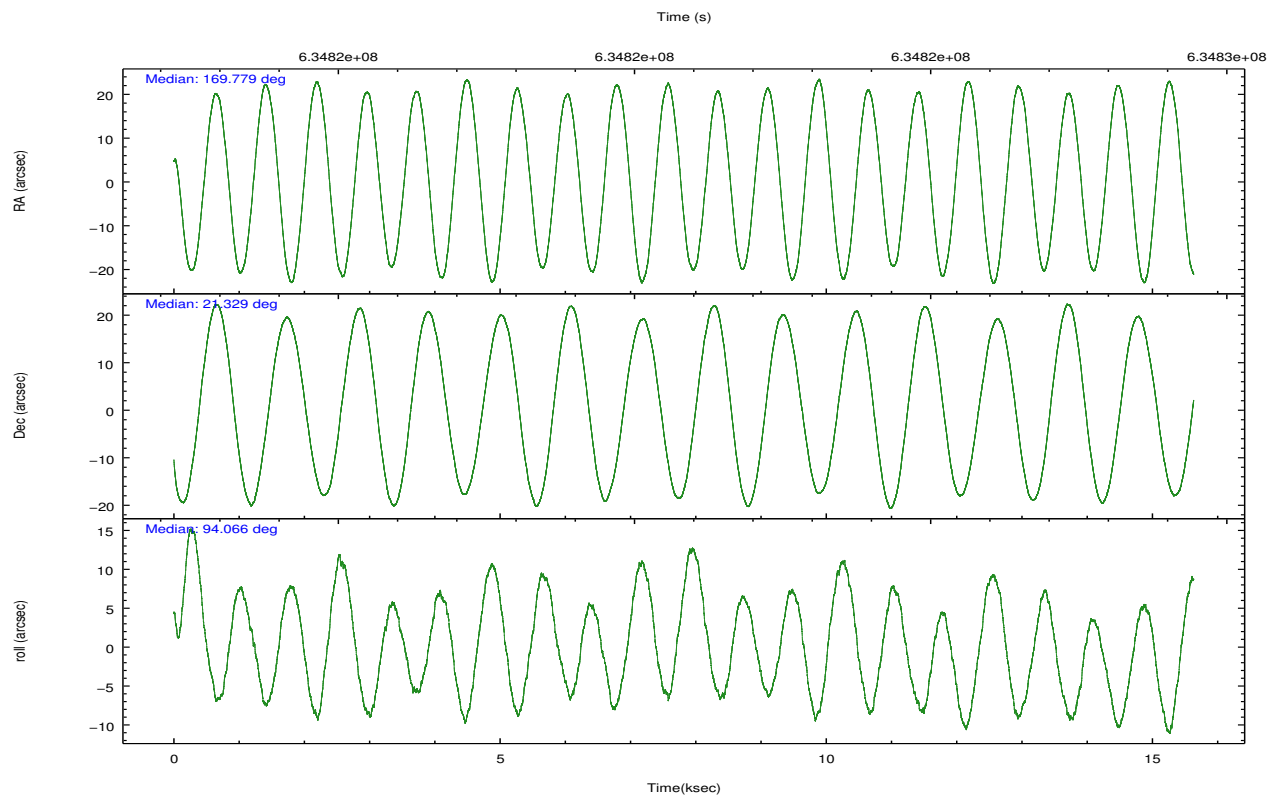
	segment 1	segment 2	segment 3
level 1 events	605641	608478	604095
rejected events	44297	44229	44283
rejected %	7%	7%	7%

2.2 Compared Parameters

Parameter	Planned	Actual	Parameter	Planned	Actual
Instrument	HRC	HRC	Obspar format version number	7	7
Detector	HRC-S	HRC-S	Obspar file type	PREDICTED	ACTUAL
Grating	LETG	LETG	Obspar update status	NONE	UPDATED
Data mode	OBSERVING	OBSERVING			
Observation mode	POINTING	POINTING			
[deg] Pointing RA	169.797495	169.7788799461541			
[deg] Pointing Dec	21.306598	21.32960301900773			
[deg] Pointing Roll	93.995918	94.07001872100517			
[mm] SIM focus pos	-1.429586	-1.428180813131781			
[mm] SIM defocus	0.1037507710433287	0.1051558262725154			
[mm] SIM translation stage pos	250.455976	250.466033080201			
[mm] SIM translation stage offset	0	-0.01005468664627074			
[s] Observation start time (MET)	634813159.184000	634811851.20495			
Observation start date	2018-02-12T08:58:10	2018-02-12T08:37:31			
[s] Observation end time (MET)	634828659.184000	634829803.05601			
Observation end date	2018-02-12T13:16:30	2018-02-12T13:36:43			

2.3 Aspect



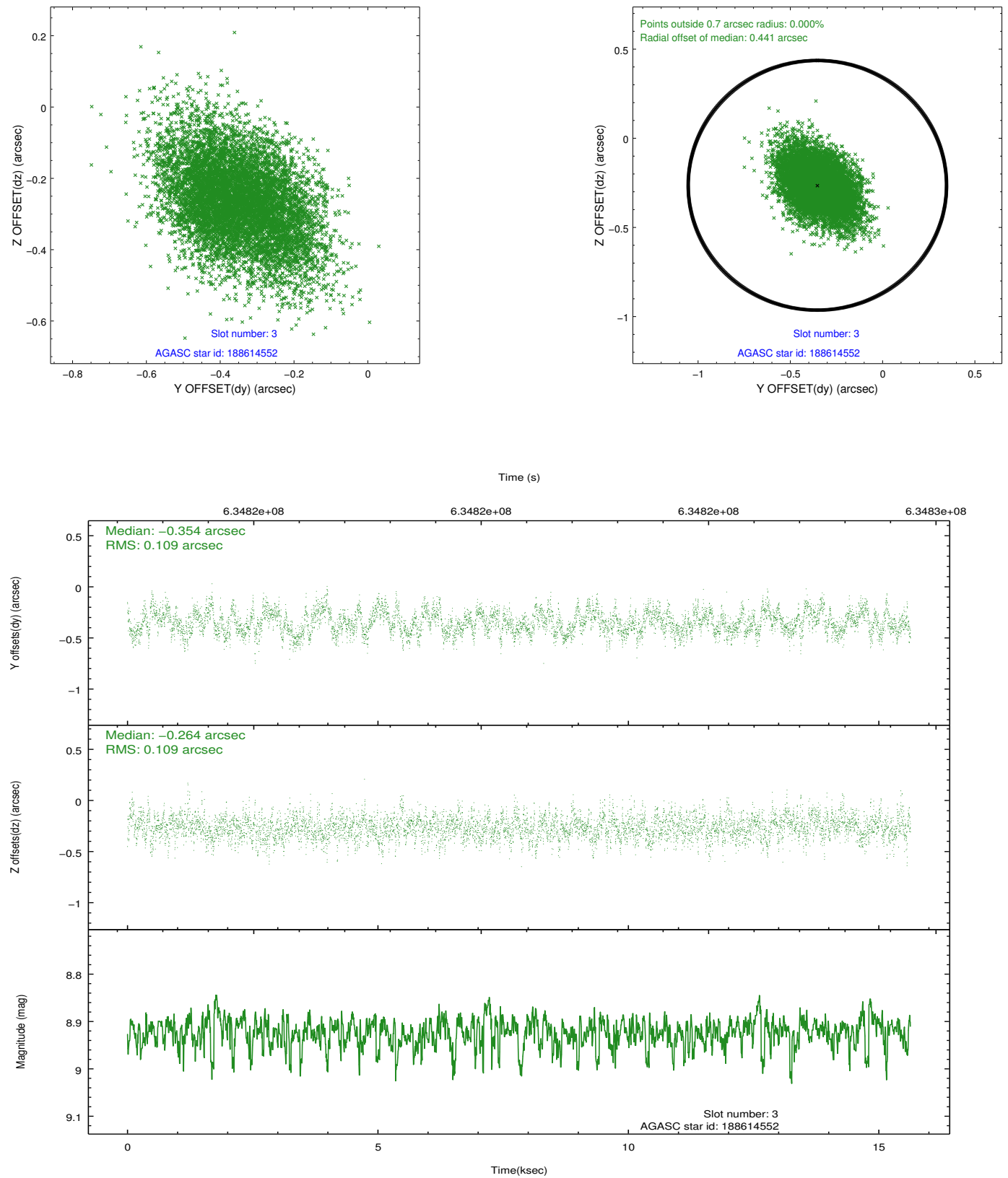


Slot Statistics

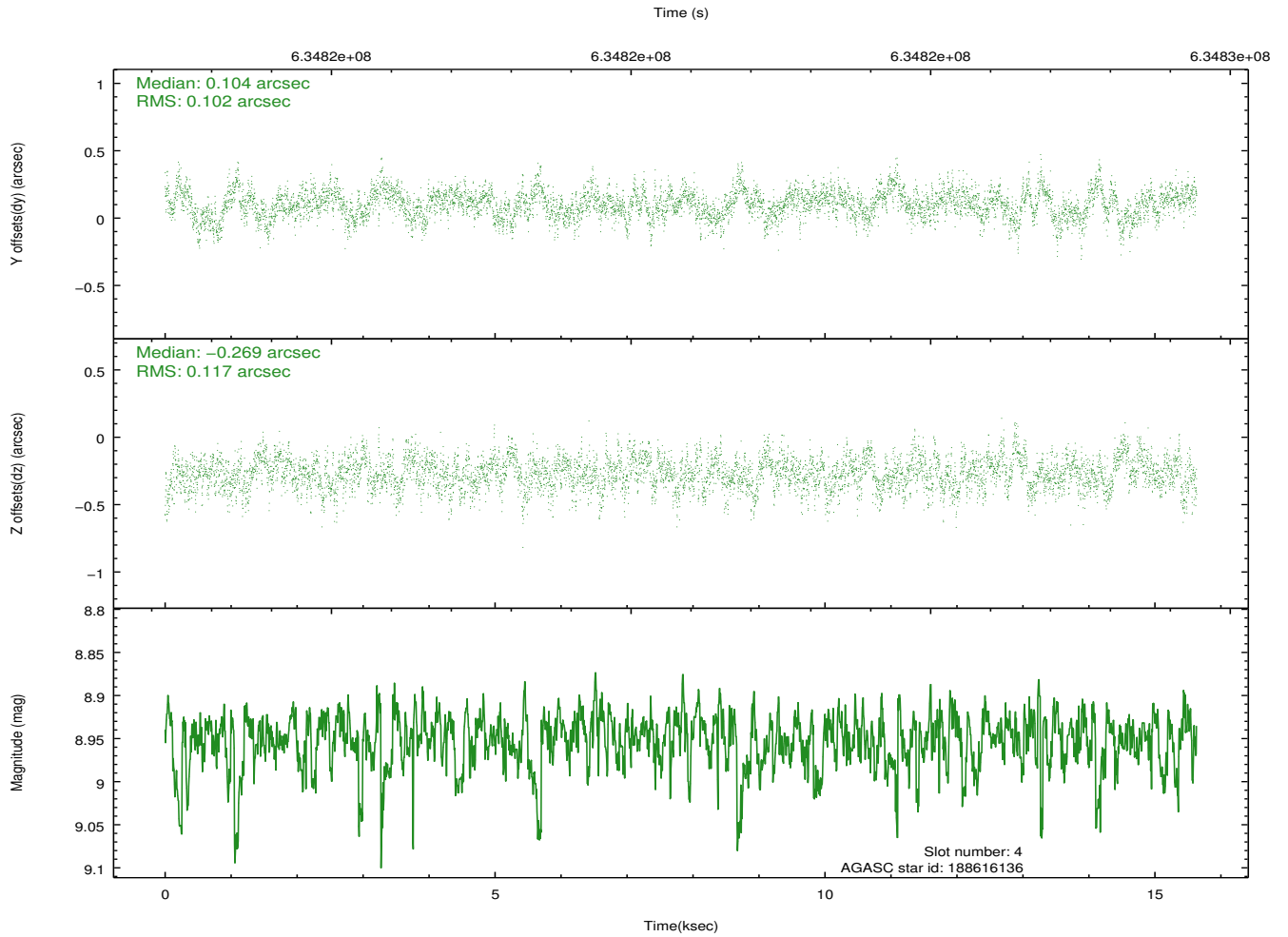
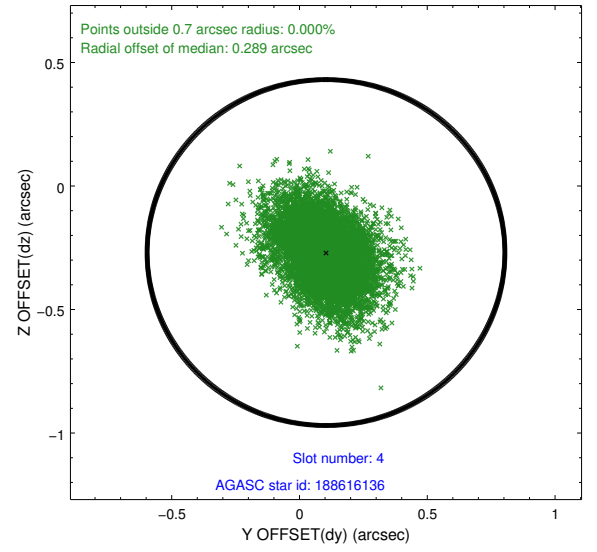
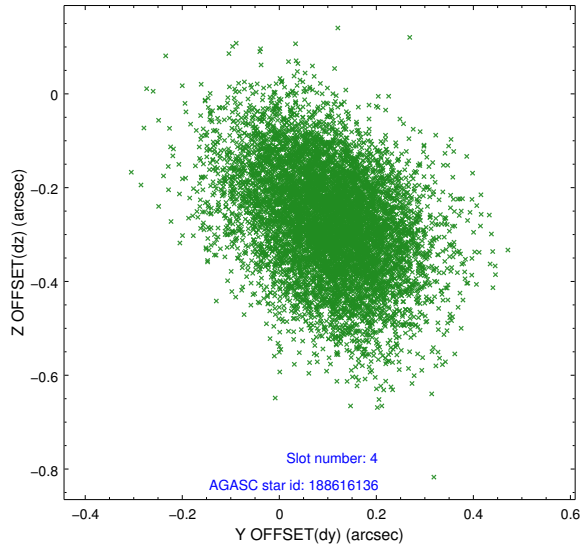
slot	status	used	id	mag	n_pts	med_dy	med_dz	dr1	dr2	ra	dec	mean_y	mean_z
0	FID		HRC-S-1	7.09	3813	-0.064	-0.188	0.029	0.072	0.000000	0.000000	-1178.01	-473.59
1	FID		HRC-S-2	7.07	3813	0.403	-0.135	0.008	0.014	0.000000	0.000000	1221.83	-466.04
2	FID		HRC-S-3	7.08	3813	0.048	0.022	0.029	0.084	0.000000	0.000000	-1180.41	556.01
3	GUIDE	used	188614552	8.92	7618	-0.354	-0.264	0.161	0.271	169.490657	21.468678	655.27	984.99
4	GUIDE	used	188616136	8.95	7619	0.104	-0.269	0.164	0.275	169.590378	21.286471	-23.41	697.36
5	GUIDE	used	188622880	7.58	7626	-0.162	0.084	0.135	0.237	170.025103	21.913955	2128.67	-910.55
6	GUIDE	used	188623472	7.06	7626	0.181	0.383	0.117	0.201	169.895324	20.725289	-2109.08	-182.31
7	GUIDE	used	188614832	9.12	7614	0.229	0.069	0.195	0.340	170.375801	21.987686	2315.37	-2096.38

2.4 Star Slots

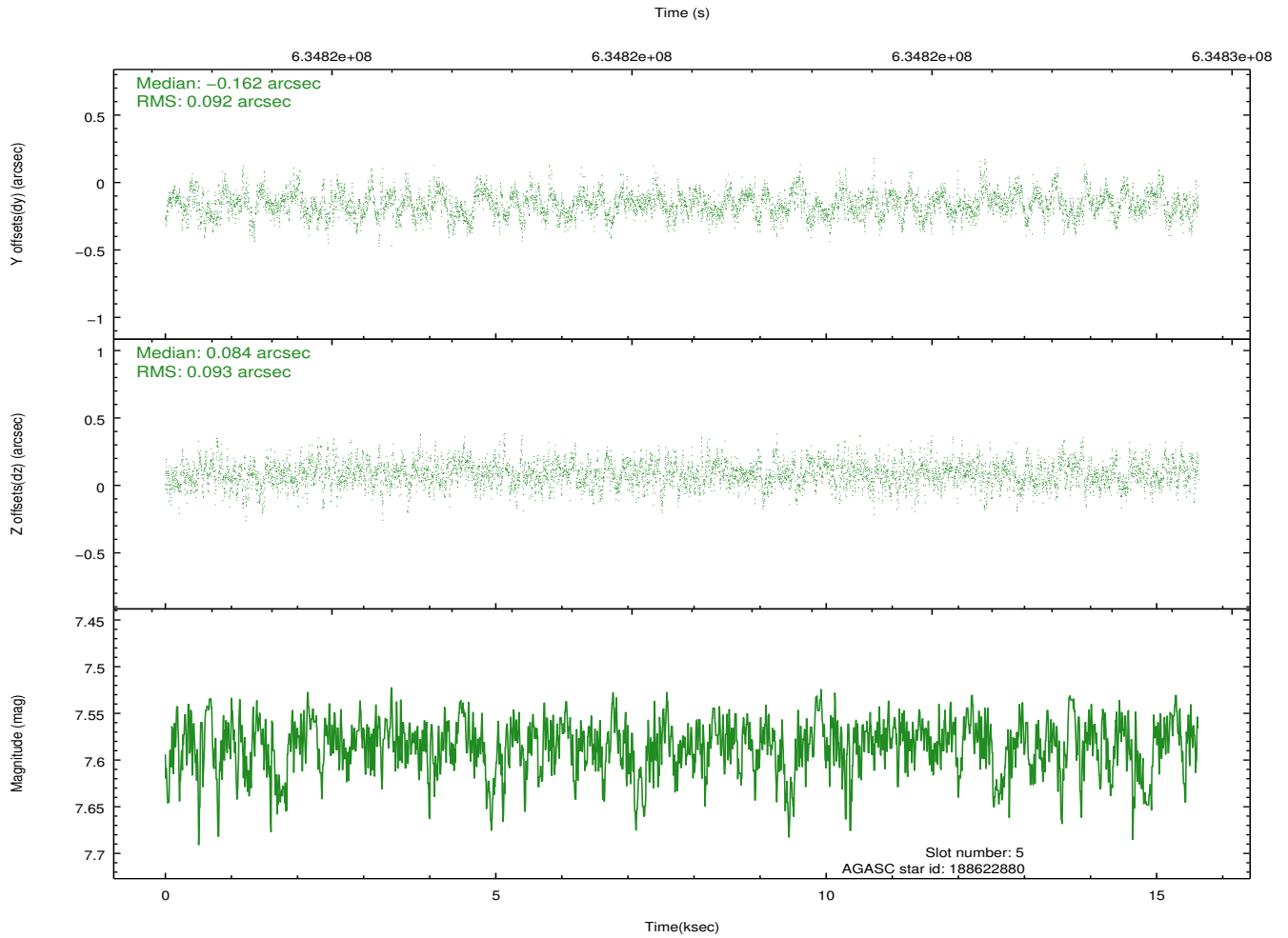
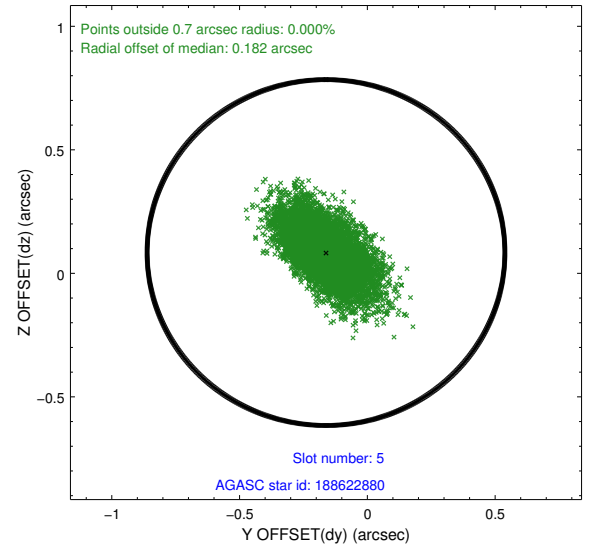
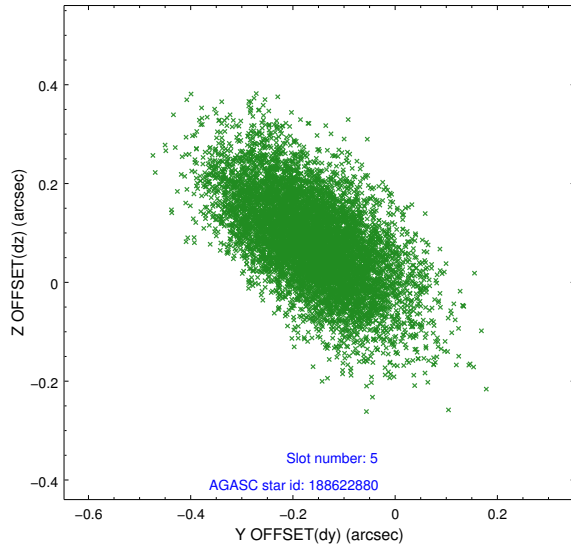
2.4.1 Slot 3



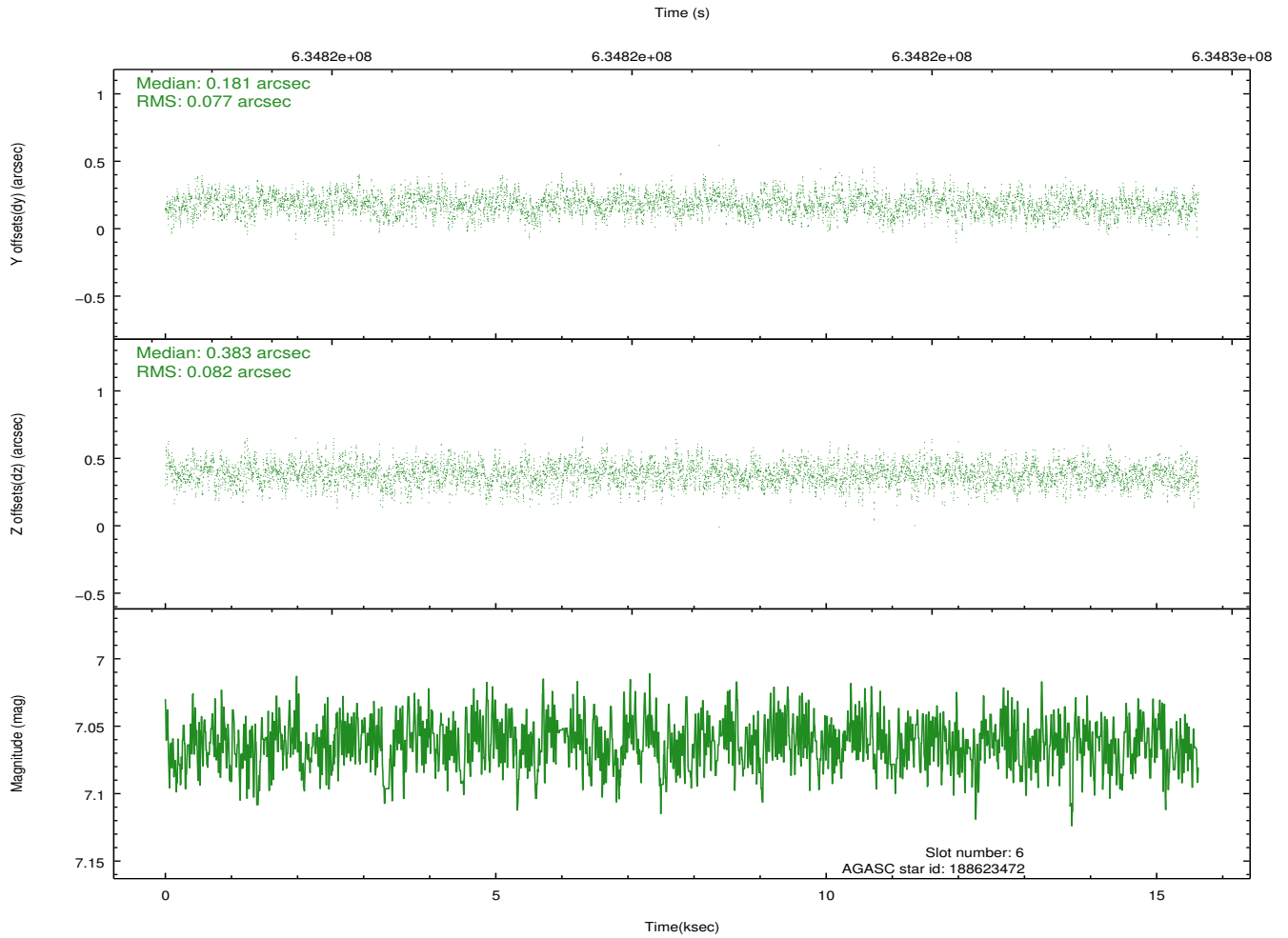
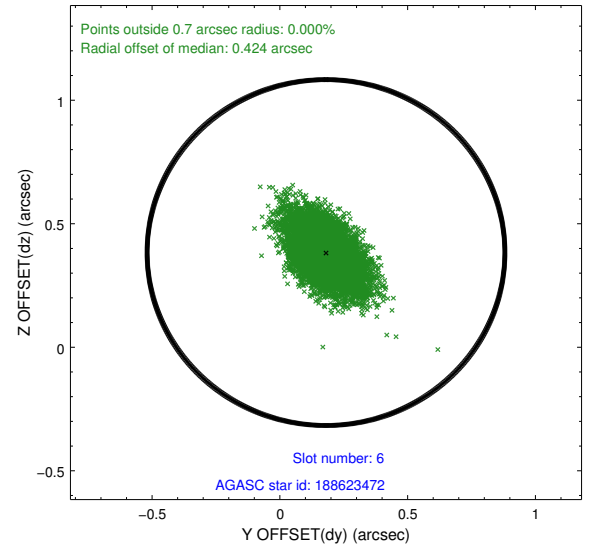
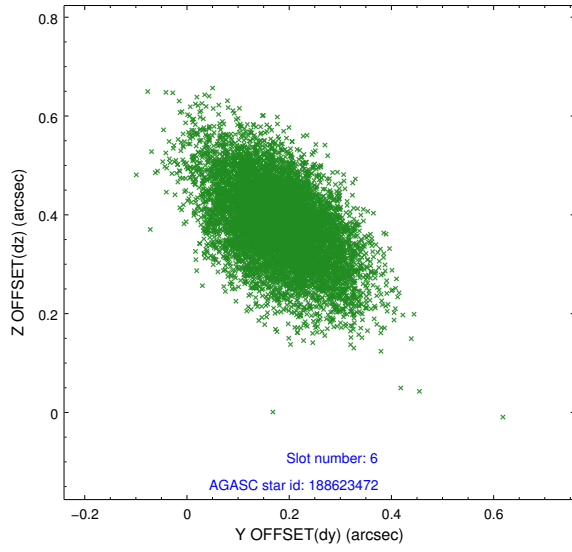
2.4.2 Slot 4



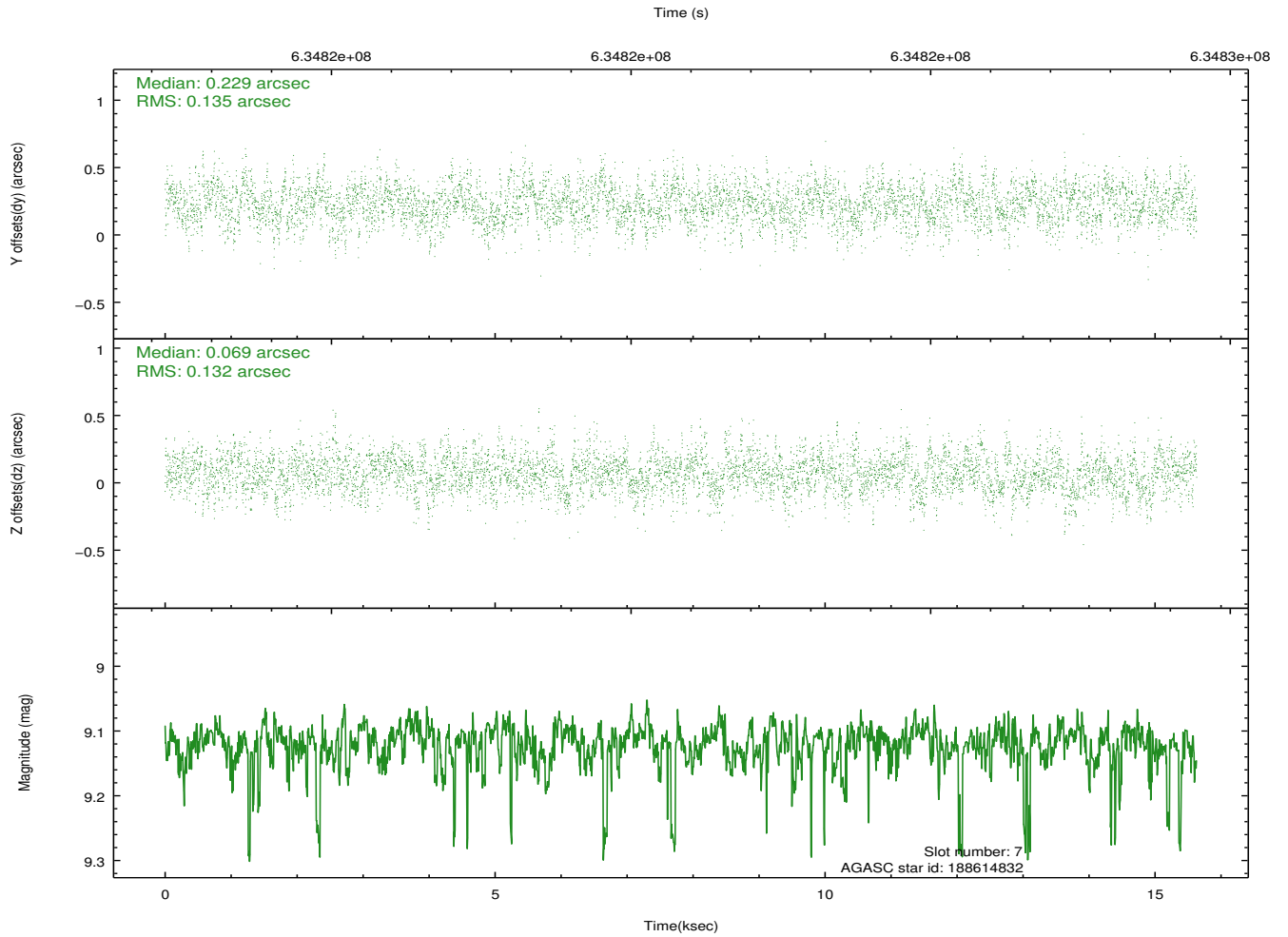
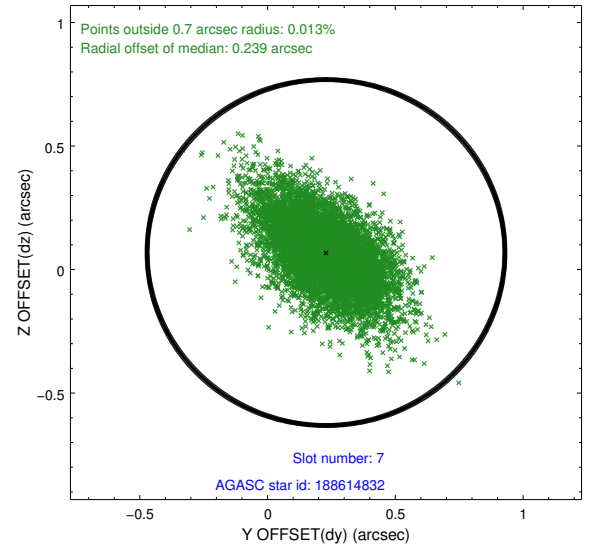
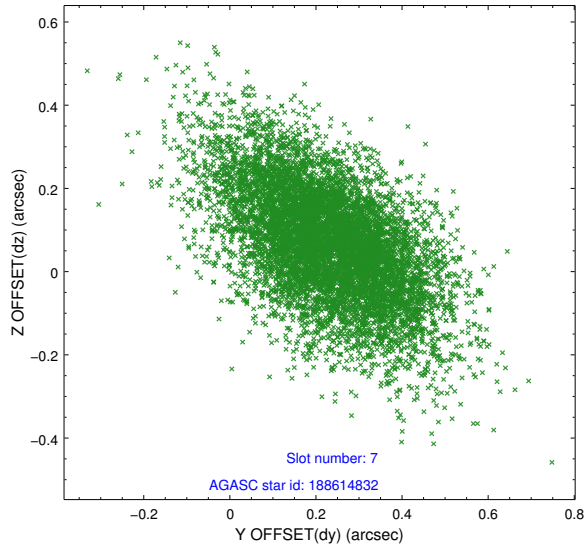
2.4.3 Slot 5



2.4.4 Slot 6

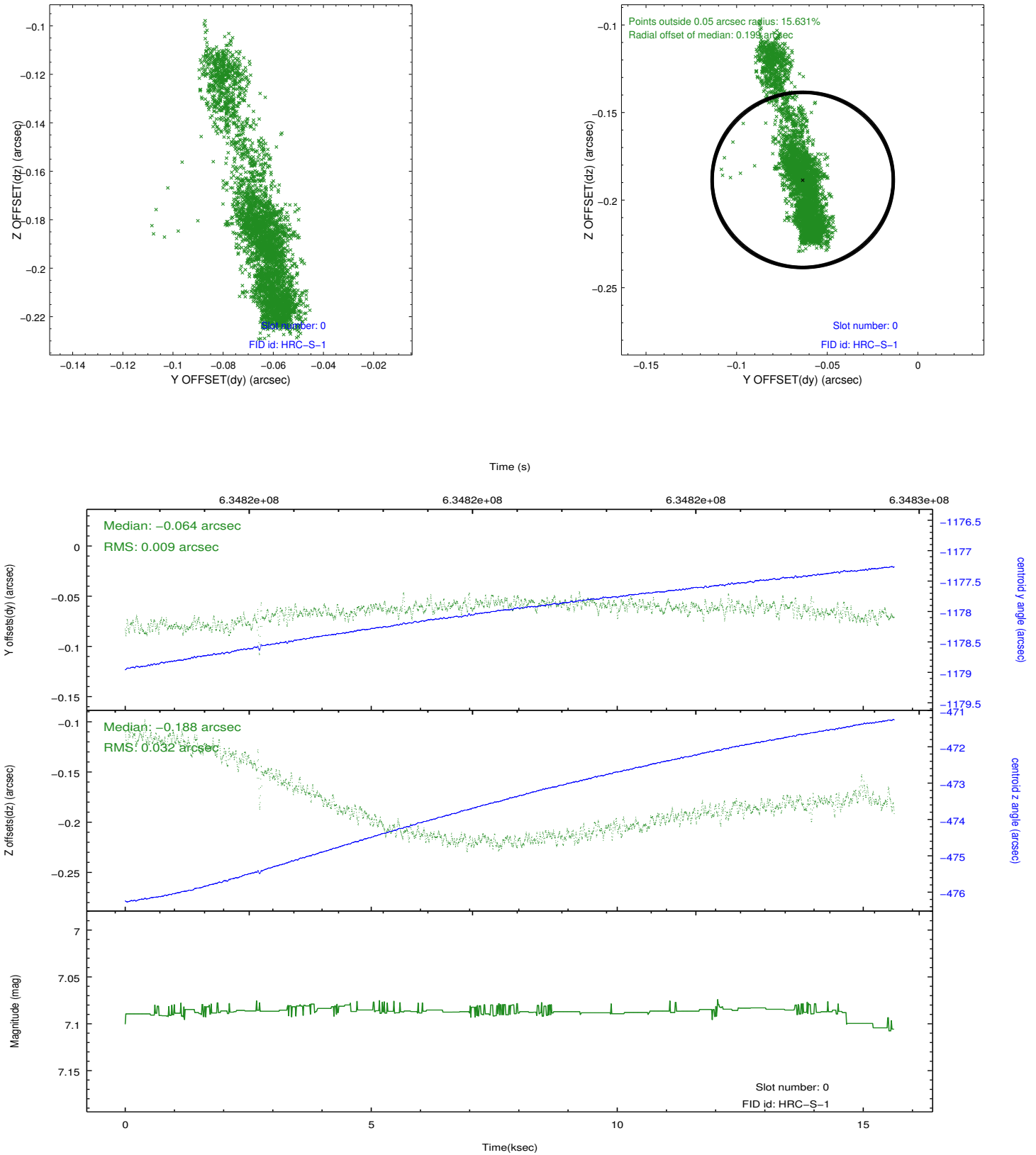


2.4.5 Slot 7

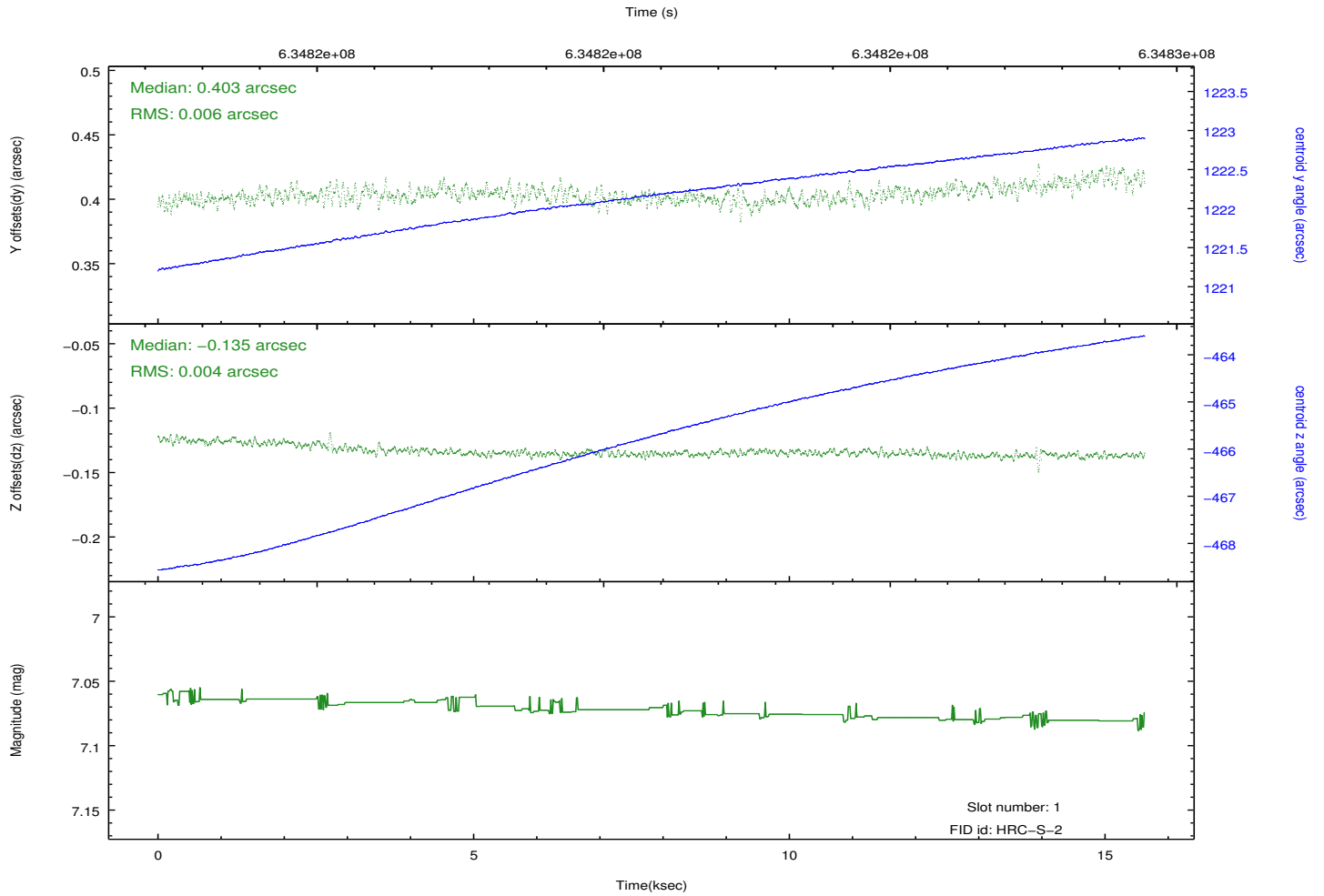
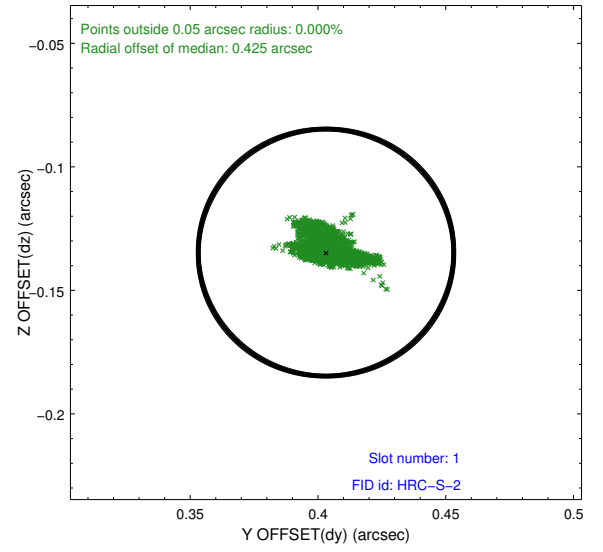
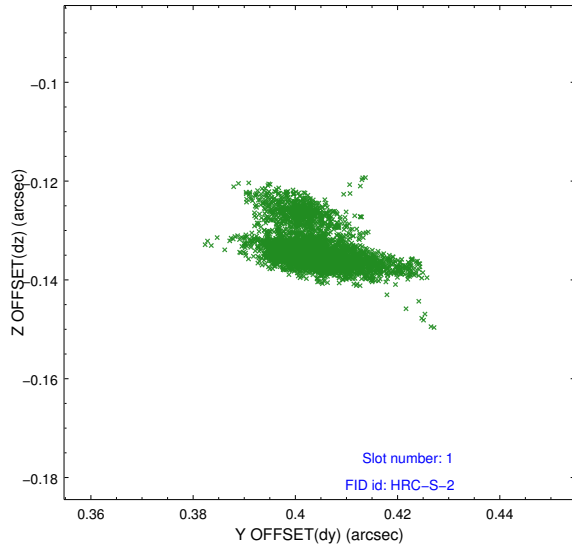


2.5 FID Slots

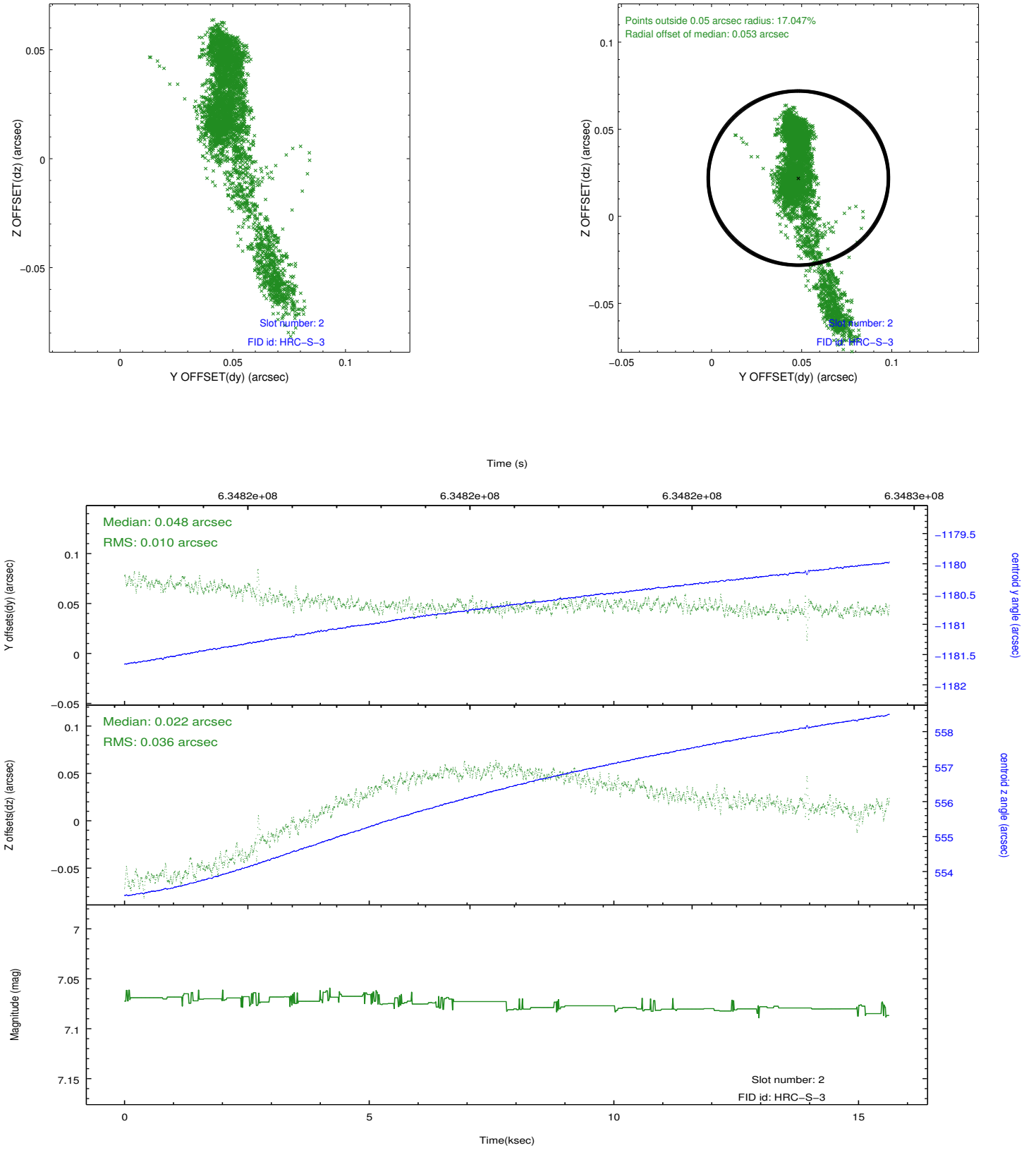
2.5.1 Slot 0



2.5.2 Slot 1

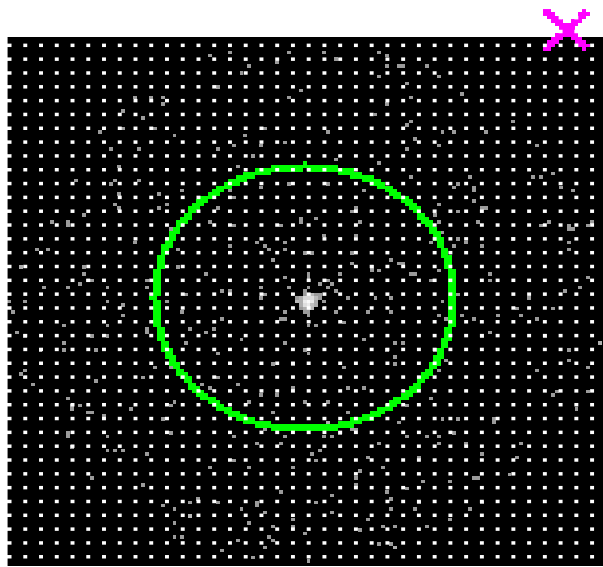


2.5.3 Slot 2

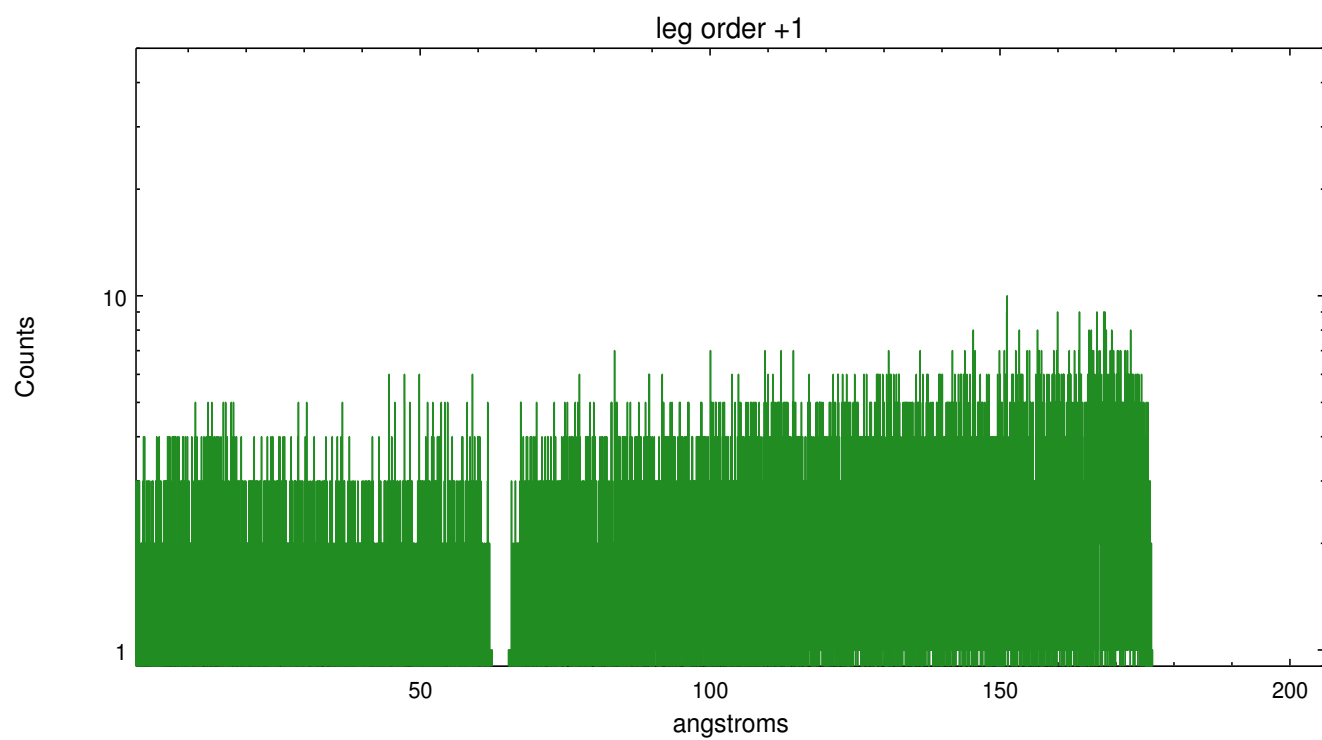
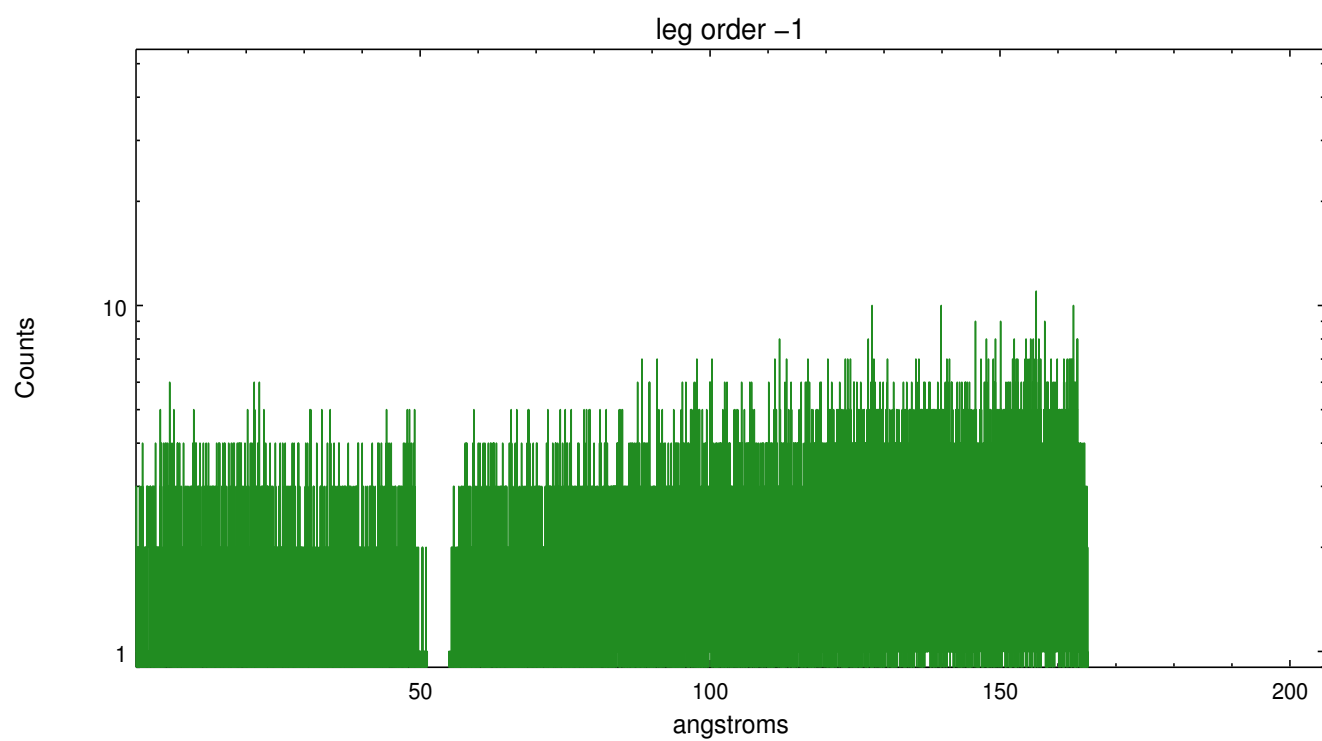


3 Gratings

3.1 LETG Arm



LETG Zero Order



A Summary

A.1 Status

V&V Scientist	Joy Nichols
V&V Date (YYYY-MM-DD)	2018.02.13
V&V Edition	1
V&V Disposition and Status	OK
V&V Charge Time	15.6302259202

A.2 Comments