

V&V Reference Report

L2 ASCDS Version : 10.5.4

Observation 19388 - L2 Version 1
Chandra X-Ray Center

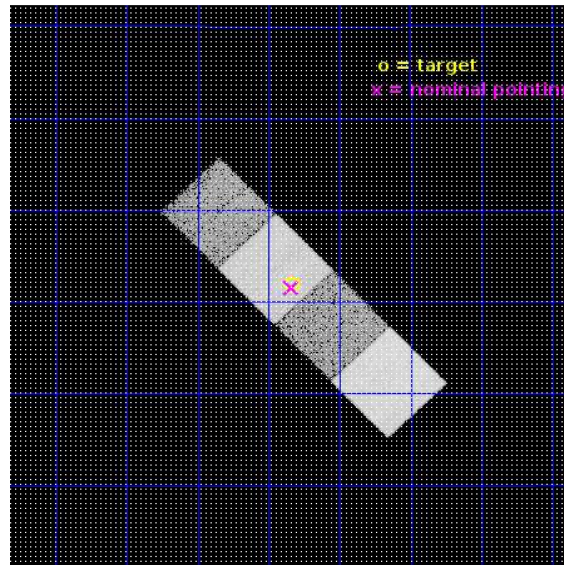
L2 Processing Date : Apr 21 2017

Contents

1	Front	2
2	OBI	3
2.1	OBI	3
2.1.1	Images	3
2.1.2	Bias	3
2.1.3	Parameters	4
2.1.4	Events	4
2.2	Compared Parameters	5
2.3	Aspect	6
2.4	Star Slots	9
2.4.1	Slot 3	9
2.4.2	Slot 4	10
2.4.3	Slot 5	11
2.4.4	Slot 6	12
2.4.5	Slot 7	13
2.5	FID Slots	14
2.5.1	Slot 0	14
2.5.2	Slot 1	15
2.5.3	Slot 2	16
A	Summary	17
A.1	Status	17
A.2	Comments	17

1 Front

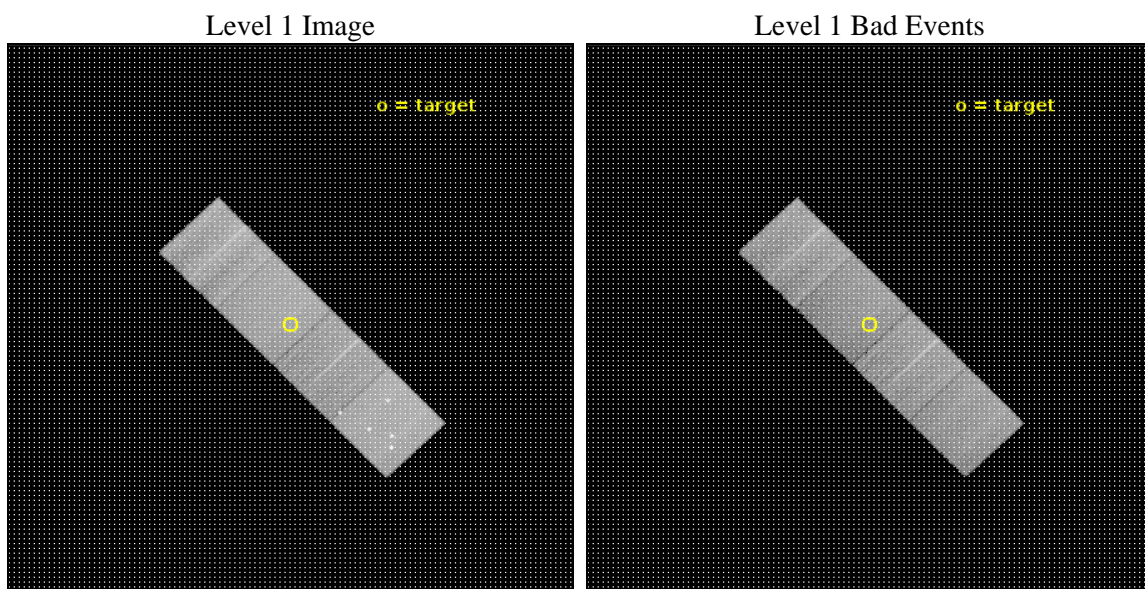
seq_num	601345	Sequence number
obs_id	19388	Observation id
title	Spiral galaxies of the Virgo cluster	Proposal title
observer	Roberto Soria	Principal investigator
object	NGC 4535	Source name
dtcycle	0	
cycle	P	events from which exps? Prim/Second/Both
ra_targ	188.584583	Observer's specified target RA [deg]
dec_targ	8.19775	Observer's specified target Dec [deg]
ra_nom	188.58506193495	Nominal RA [deg]
dec_nom	8.1922144556664	Nominal Dec [deg]
roll_nom	225.96608193956	Nominal Roll [deg]
revision	1	Processing version of data
ontime	15062.900115967	Sum of GTIs [s]
livetime	14866.092236806	Livetime [s]
ontime5	15062.900115967	Sum of GTIs [s]
ontime6	15062.900115967	Sum of GTIs [s]
ontime7	15062.900115967	Sum of GTIs [s]
ontime8	15059.759045839	Sum of GTIs [s]
l2events	159350	Number of level 2 events



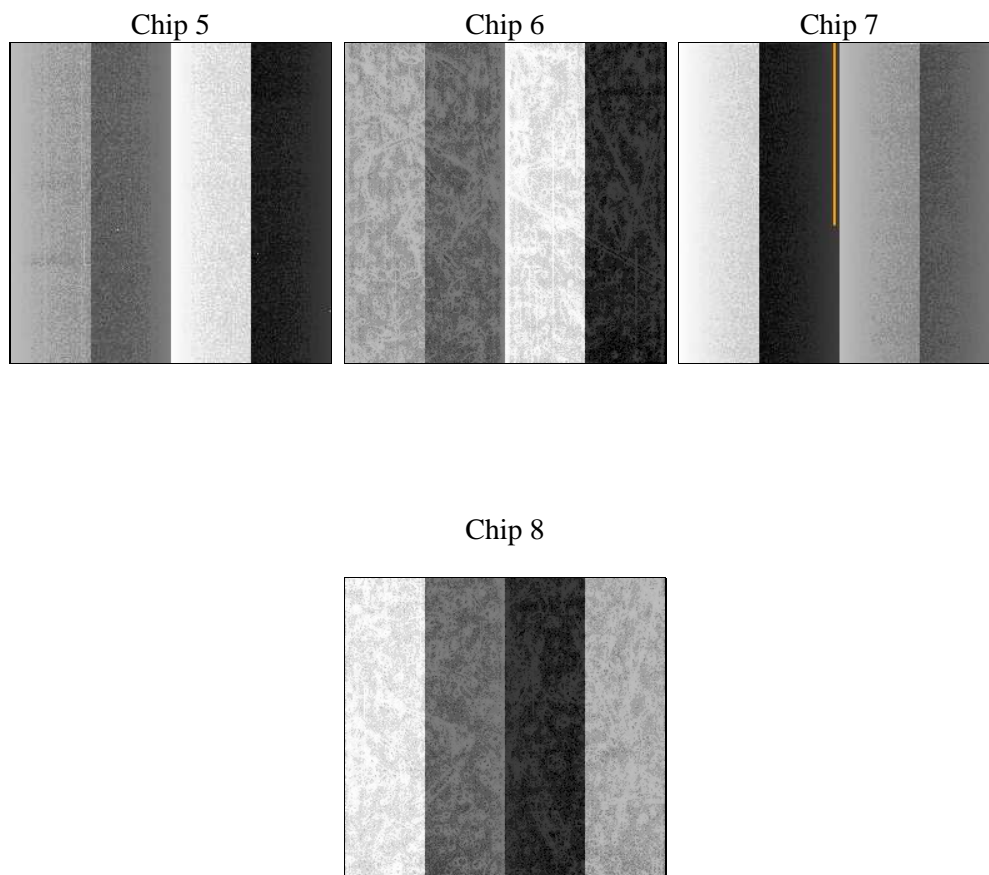
2 OBI

2.1 OBI

2.1.1 Images



2.1.2 Bias



2.1.3 Parameters

obi_num	0	Obi number	sched_exp_time	15000.000000	[s] Scheduled observation exposure time
ascdsver	10.5.4	Processing system revision	ontime	15062.900115967	Sum of GTIs [s]
caldsver	4.7.3	 	ontime5	15062.900115967	Sum of GTIs [s]
date	2017-04-21T23:52:44	Date and time of file creation	ontime6	15062.900115967	Sum of GTIs [s]
revision	1	Processing version of data	ontime7	15062.900115967	Sum of GTIs [s]
			ontime8	15059.759045839	Sum of GTIs [s]
			l1events	579098	Number of level 1 events

2.1.4 Events

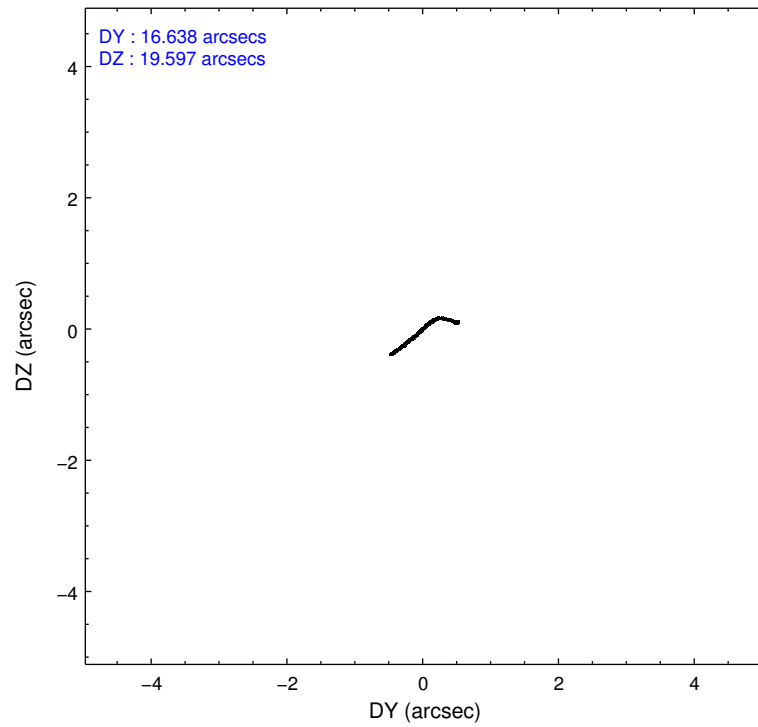
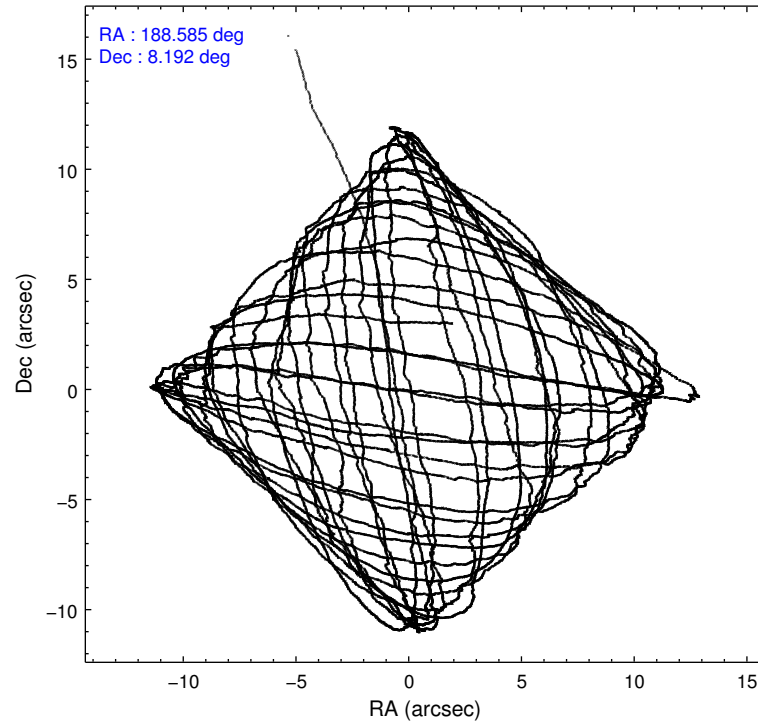
	ccd 5	ccd 6	ccd 7	ccd 8
level 1 events	182475	112010	139782	144831
rejected events	88601	100013	79206	107769
rejected %	48%	89%	56%	74%

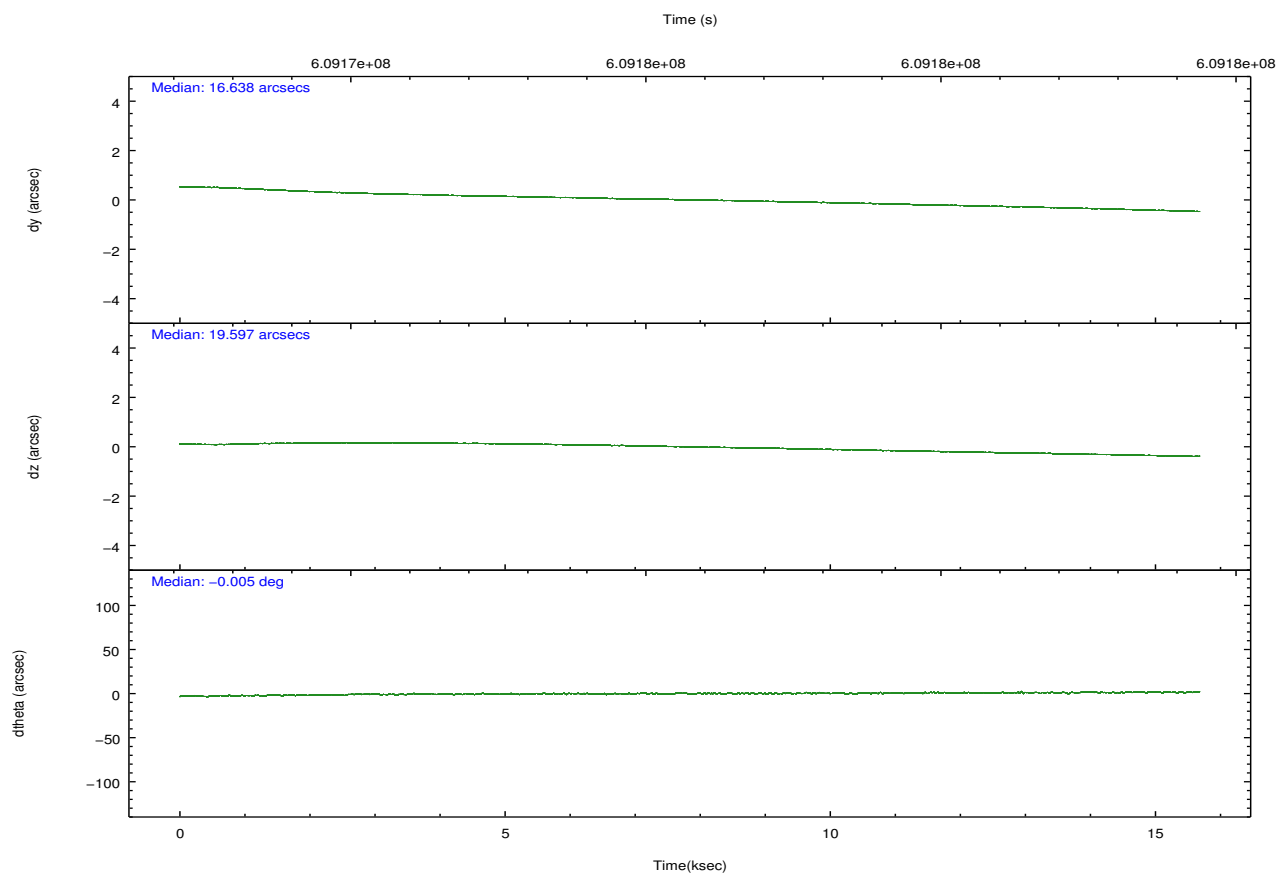
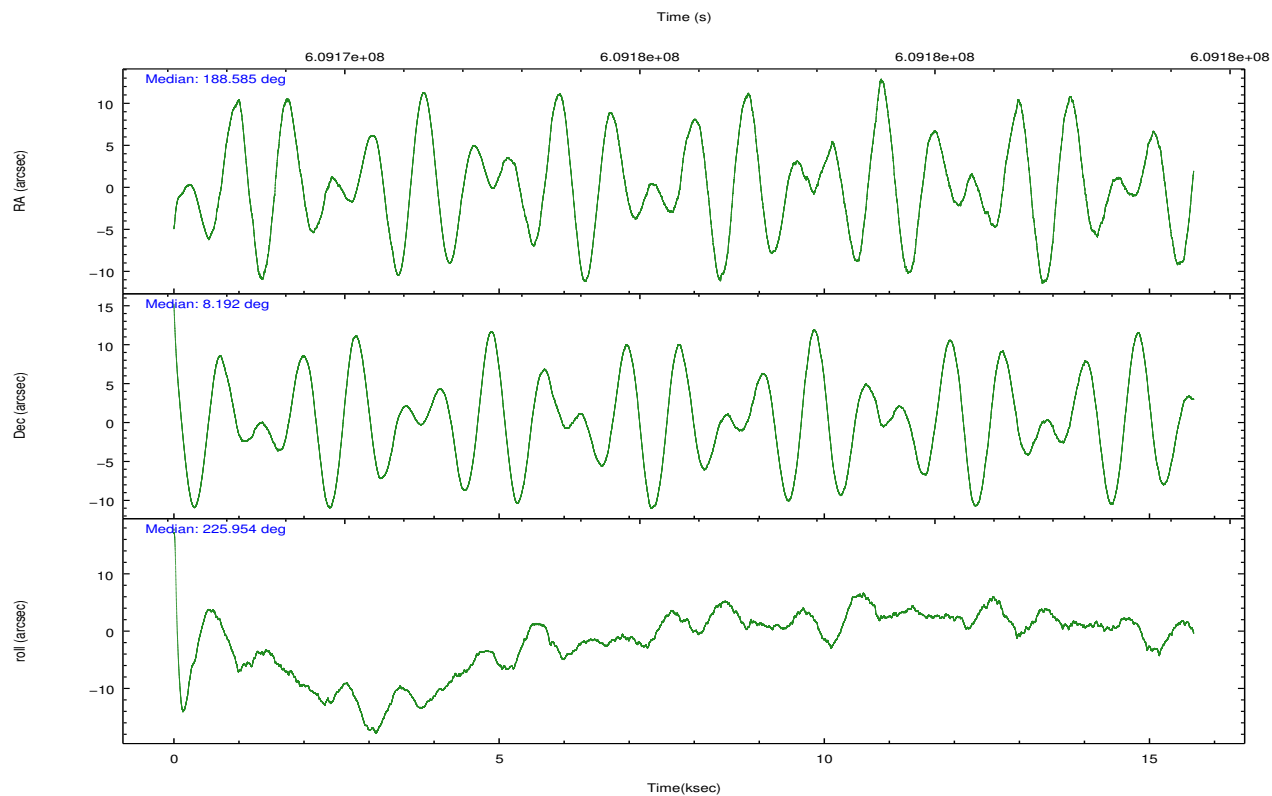
	ccd 5	ccd 6	ccd 7	ccd 8
grade 0 events	14623	3835	5053	10210
	8%	3%	3%	7%
grade 1 events	489	37	189	90
	0%	0%	0%	0%
grade 2 events	28027	2901	12943	9141
	15%	2%	9%	6%
grade 3 events	2820	1184	4670	3809
	1%	1%	3%	2%
grade 4 events	3017	1109	4683	3532
	1%	0%	3%	2%
grade 5 events	11313	4760	13306	7574
	6%	4%	9%	5%
grade 6 events	45400	2970	33237	10379
	24%	2%	23%	7%
grade 7 events	76786	95214	65701	100096
	42%	85%	47%	69%

2.2 Compared Parameters

Parameter	Planned	Actual	Parameter	Planned	Actual
Instrument	ACIS	ACIS	Obspar format version number	7	7
Detector	ACIS-5678	ACIS-5678	Obspar file type	PREDICTED	ACTUAL
Grating	NONE	NONE	Obspar update status	NONE	UPDATED
Data mode	VFAINT	VFAINT	Number of optional ACIS chips dropped	0	0
Observation mode	POINTING	POINTING	On-chip summing requested	N	N
[deg] Pointing RA	188.591458	188.5850619349464	Subarray requested	NONE	NONE
[deg] Pointing Dec	8.218956	8.192214455666445	Alternating exposures requested	N	N
[deg] Pointing Roll	225.808521	225.9660819395628	[s] Primary exposure time	0.000000	3.1
[mm] SIM focus pos	-0.684267	-0.6828225247311905			
[mm] SIM defocus	0	0.001444936568705701			
[mm] SIM translation stage pos	-190.132523	-190.1400660498719			
[mm] SIM translation stage offset	0	0.00754346686406393			
[s] Observation start time (MET)	609168576.184000	609166671.0420901			
Observation start date	2017-04-21T13:28:27	2017-04-21T12:57:51			
[s] Observation end time (MET)	609183576.184000	609184589.5806299			
Observation end date	2017-04-21T17:38:27	2017-04-21T17:56:29			
Read mode	TIMED	TIMED			

2.3 Aspect



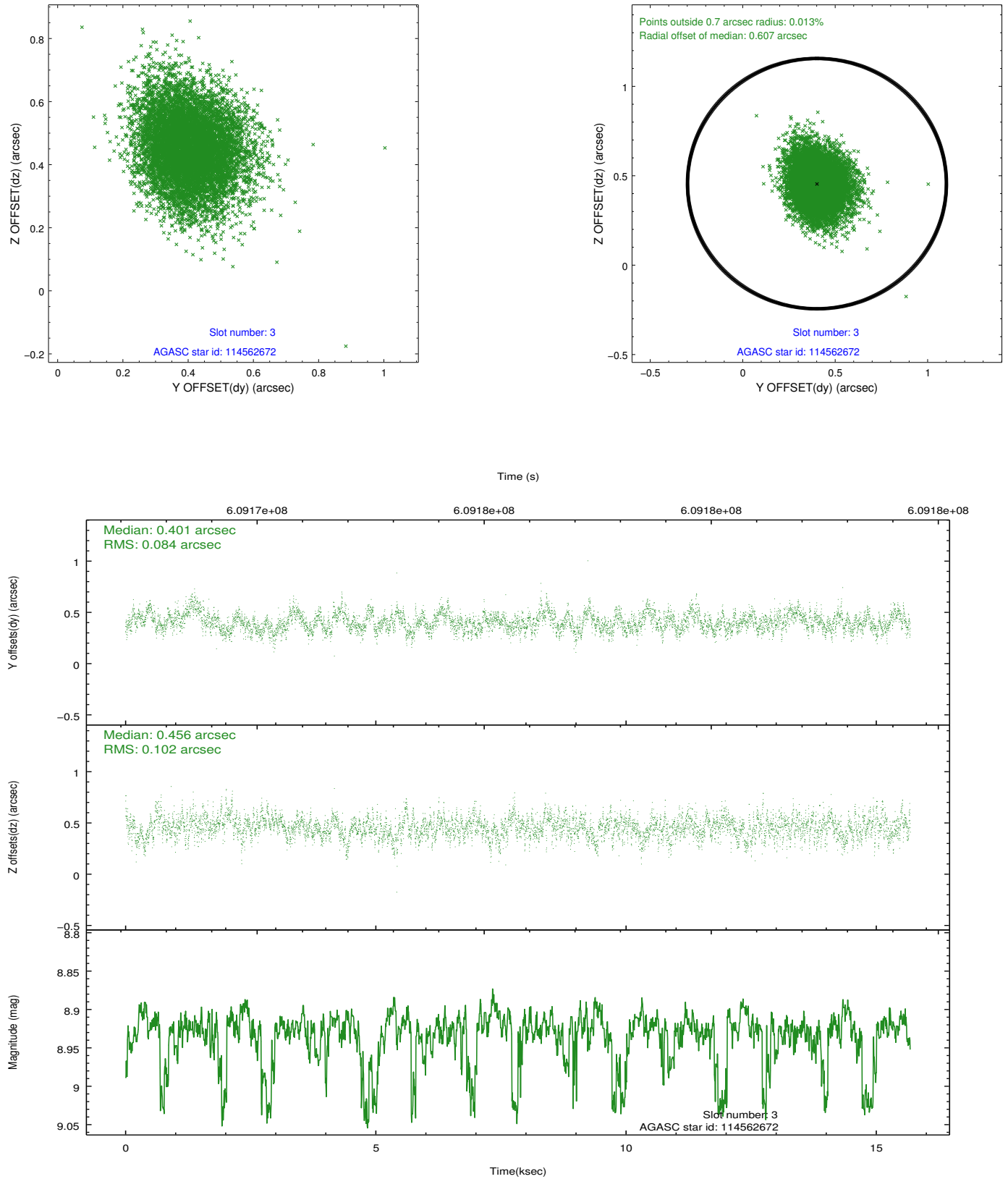


Slot Statistics

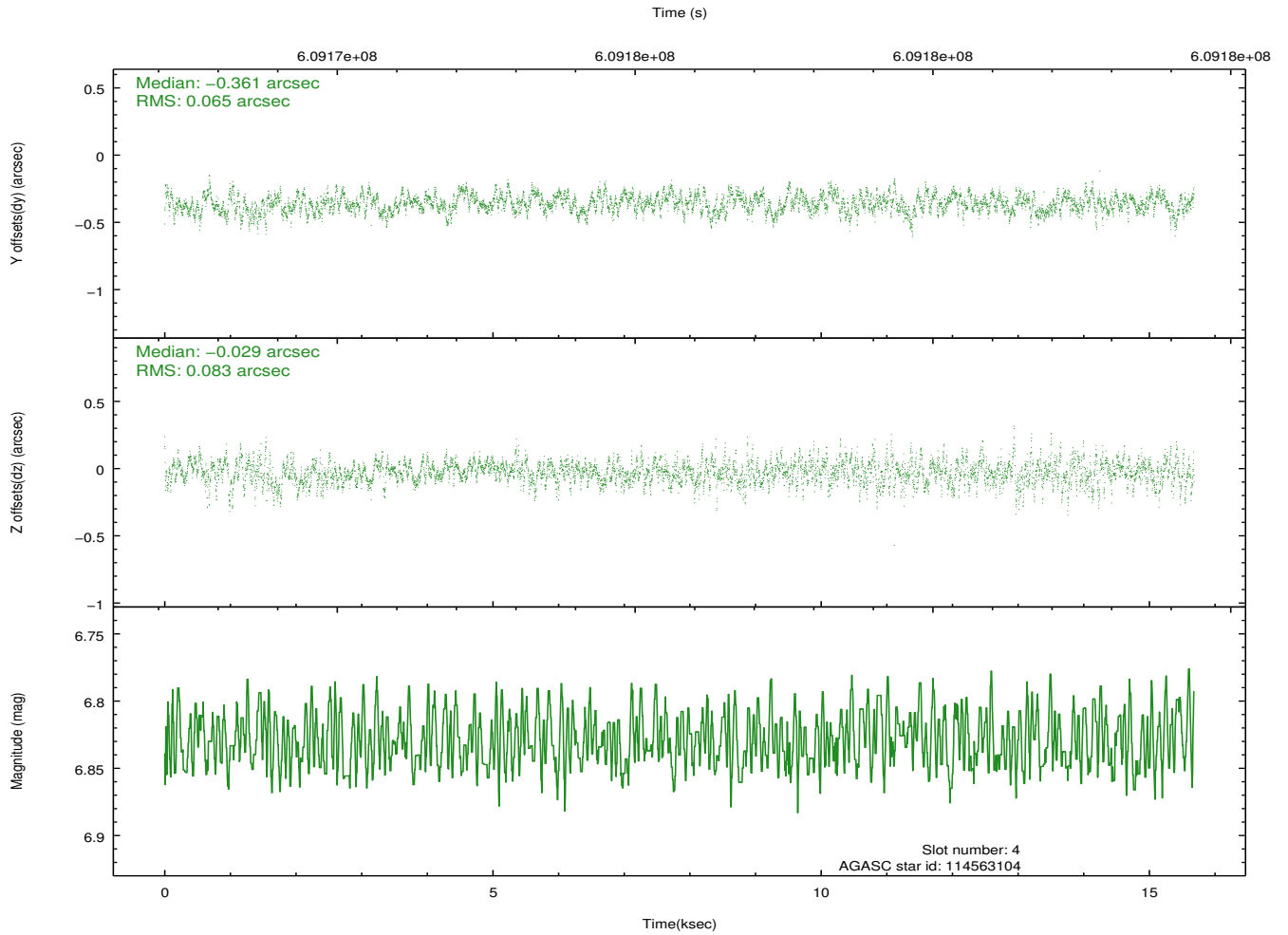
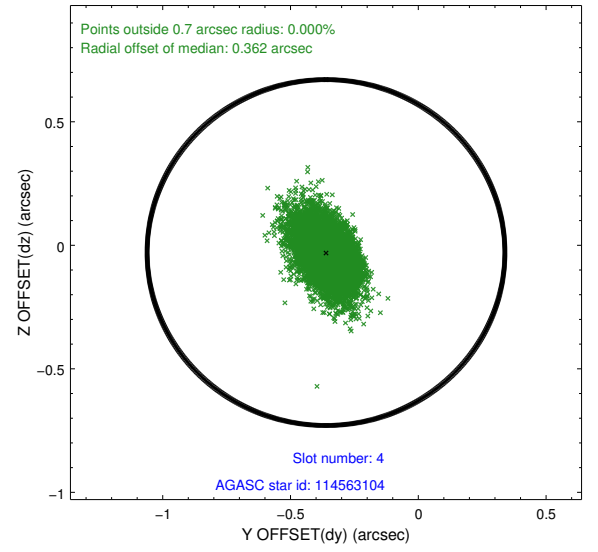
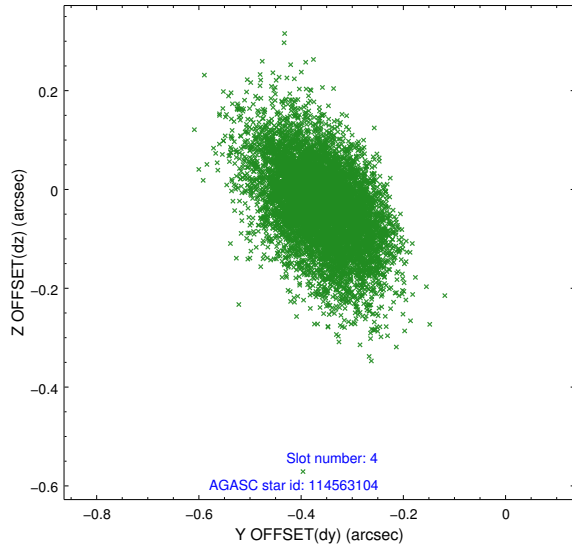
slot	status	used	id	mag	n_pts	med_dy	med_dz	dr1	dr2	ra	dec	mean_y	mean_z
0	FID		ACIS-S-2	7.04	3824	-0.220	-0.113	0.008	0.014	0.000000	0.000000	-769.83	-1741.19
1	FID		ACIS-S-4	7.16	3825	0.503	0.136	0.007	0.013	0.000000	0.000000	2143.99	167.32
2	FID		ACIS-S-5	7.14	3824	-0.314	-0.014	0.008	0.014	0.000000	0.000000	-1822.45	161.06
3	GUIDE	used	114562672	8.93	7646	0.401	0.456	0.140	0.231	188.668662	8.560933	-1073.40	-661.22
4	GUIDE	used	114563104	6.83	7650	-0.361	-0.029	0.107	0.187	188.385813	7.679181	1904.86	826.62
5	GUIDE	used	114564248	7.41	7648	-0.175	-0.005	0.103	0.175	188.352467	7.946007	1300.10	74.06
6	GUIDE	used	114695376	9.14	7641	0.376	-0.384	0.135	0.241	189.203557	7.933205	-784.53	2279.93
7	GUIDE	used	38671536	8.53	7645	-0.250	-0.030	0.123	0.202	188.748078	7.439883	1621.14	2355.60

2.4 Star Slots

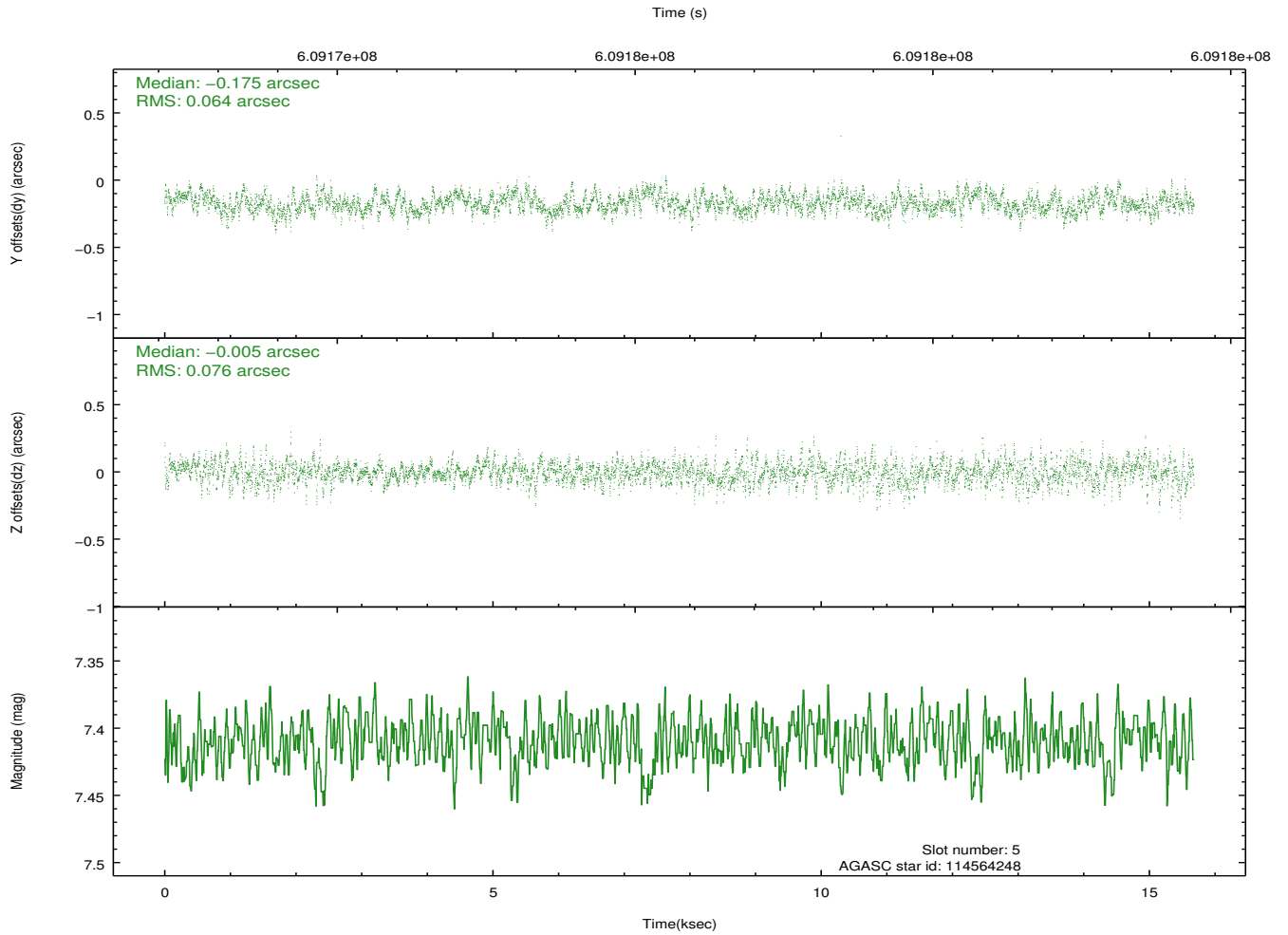
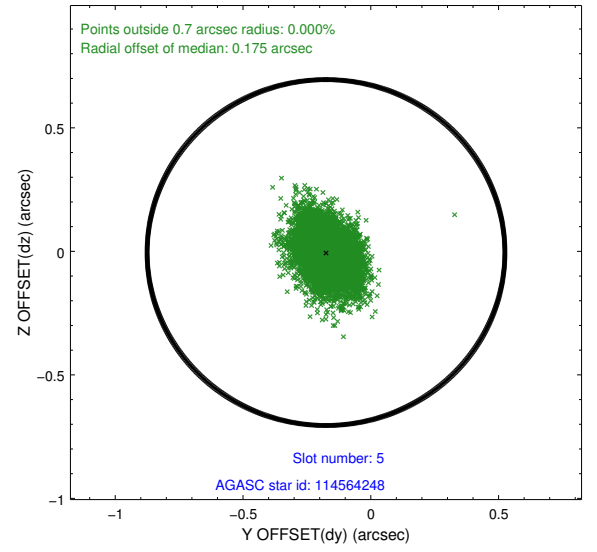
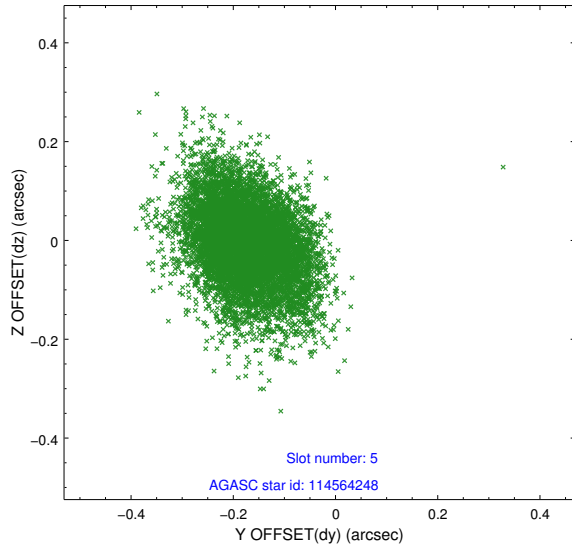
2.4.1 Slot 3



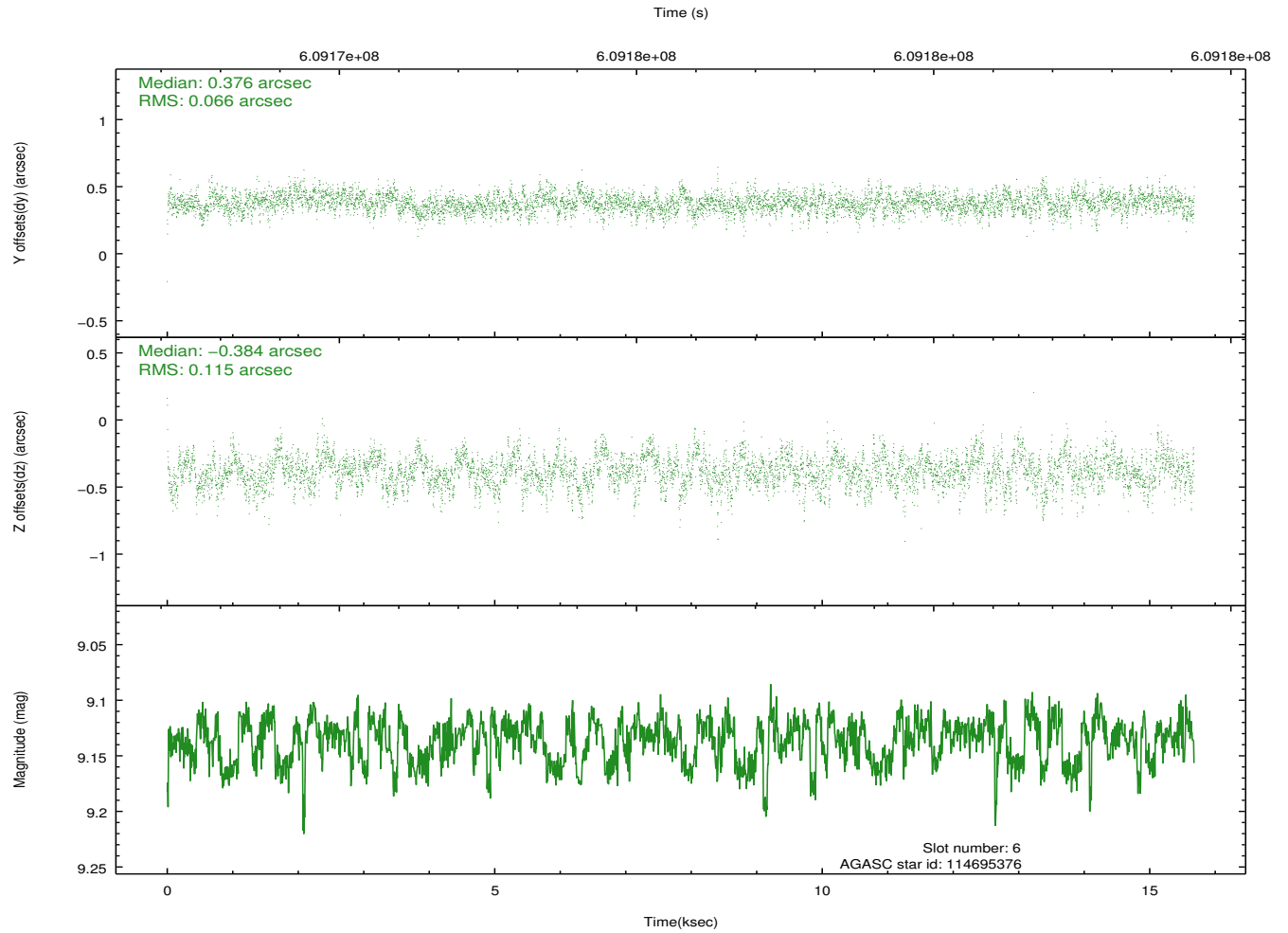
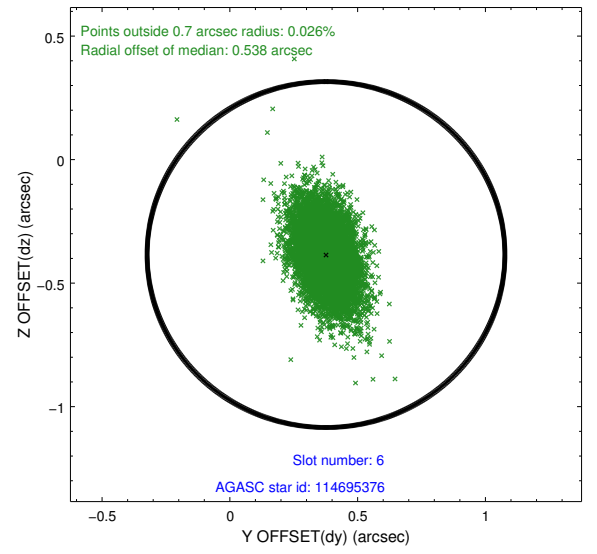
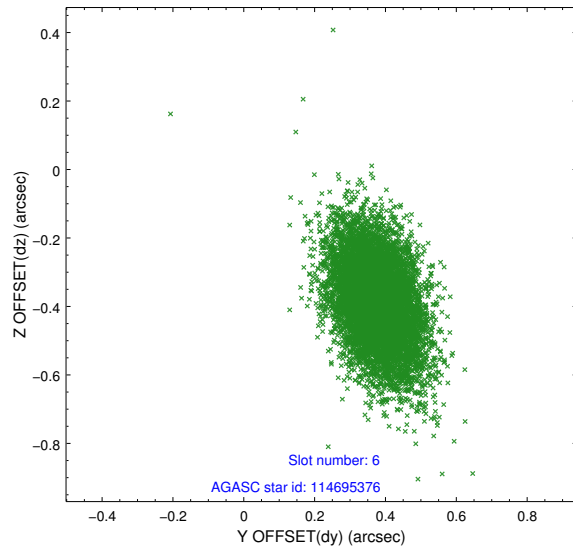
2.4.2 Slot 4



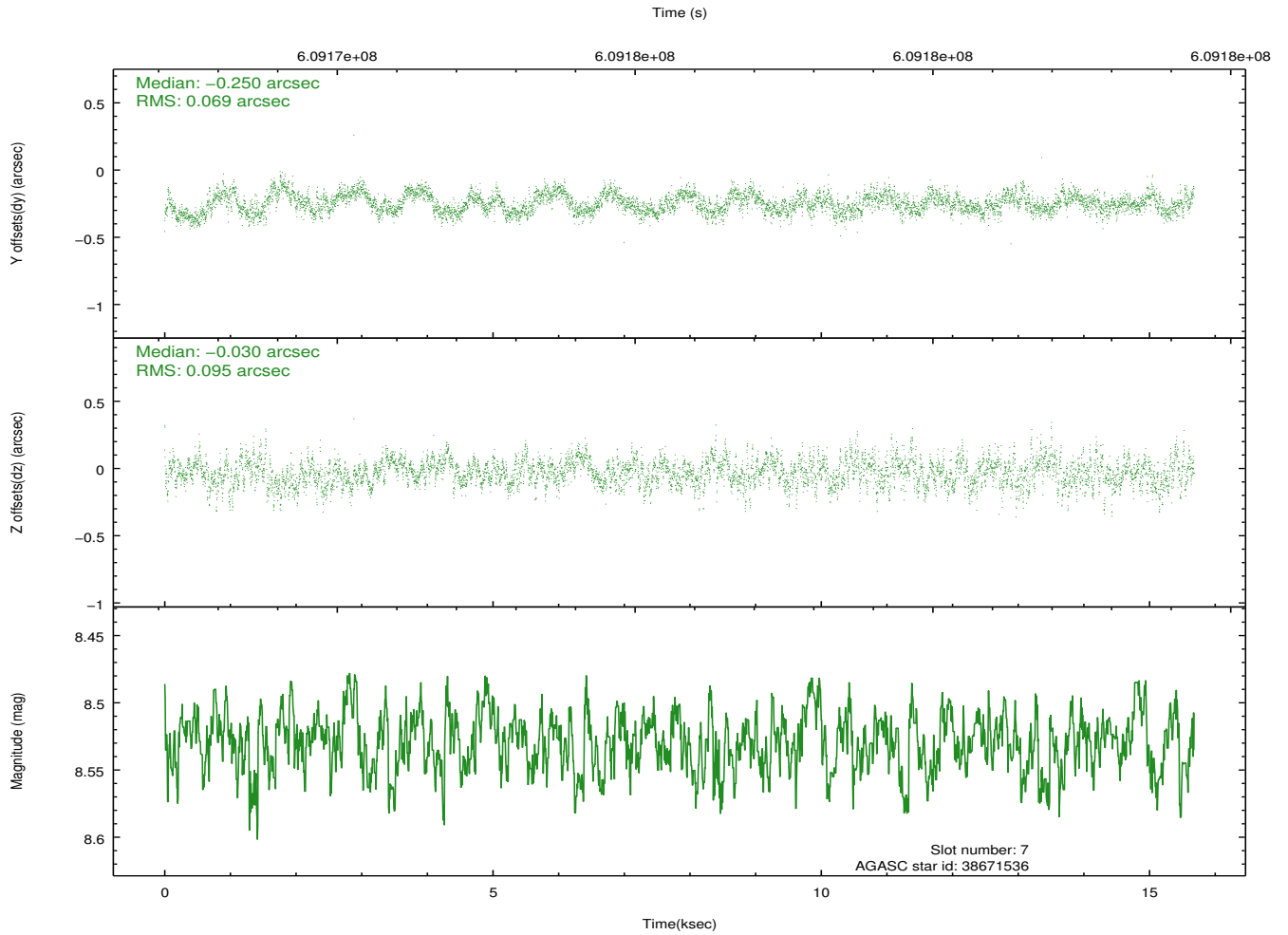
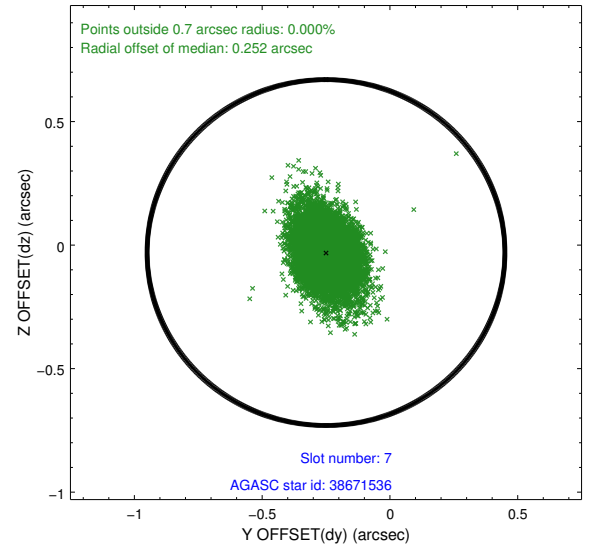
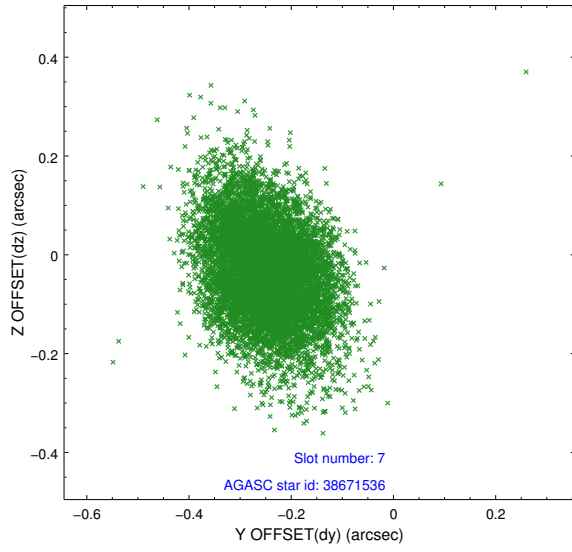
2.4.3 Slot 5



2.4.4 Slot 6

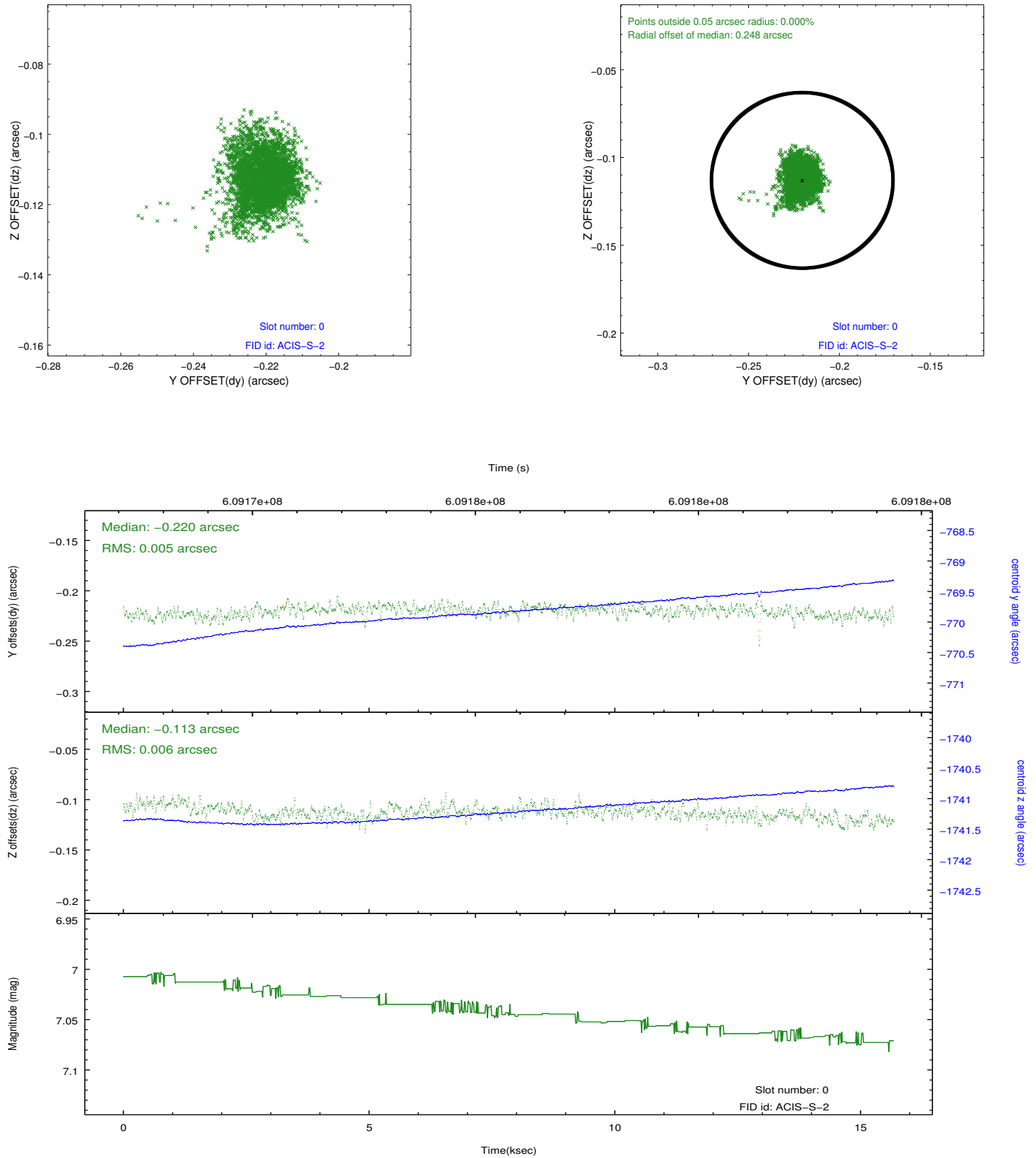


2.4.5 Slot 7

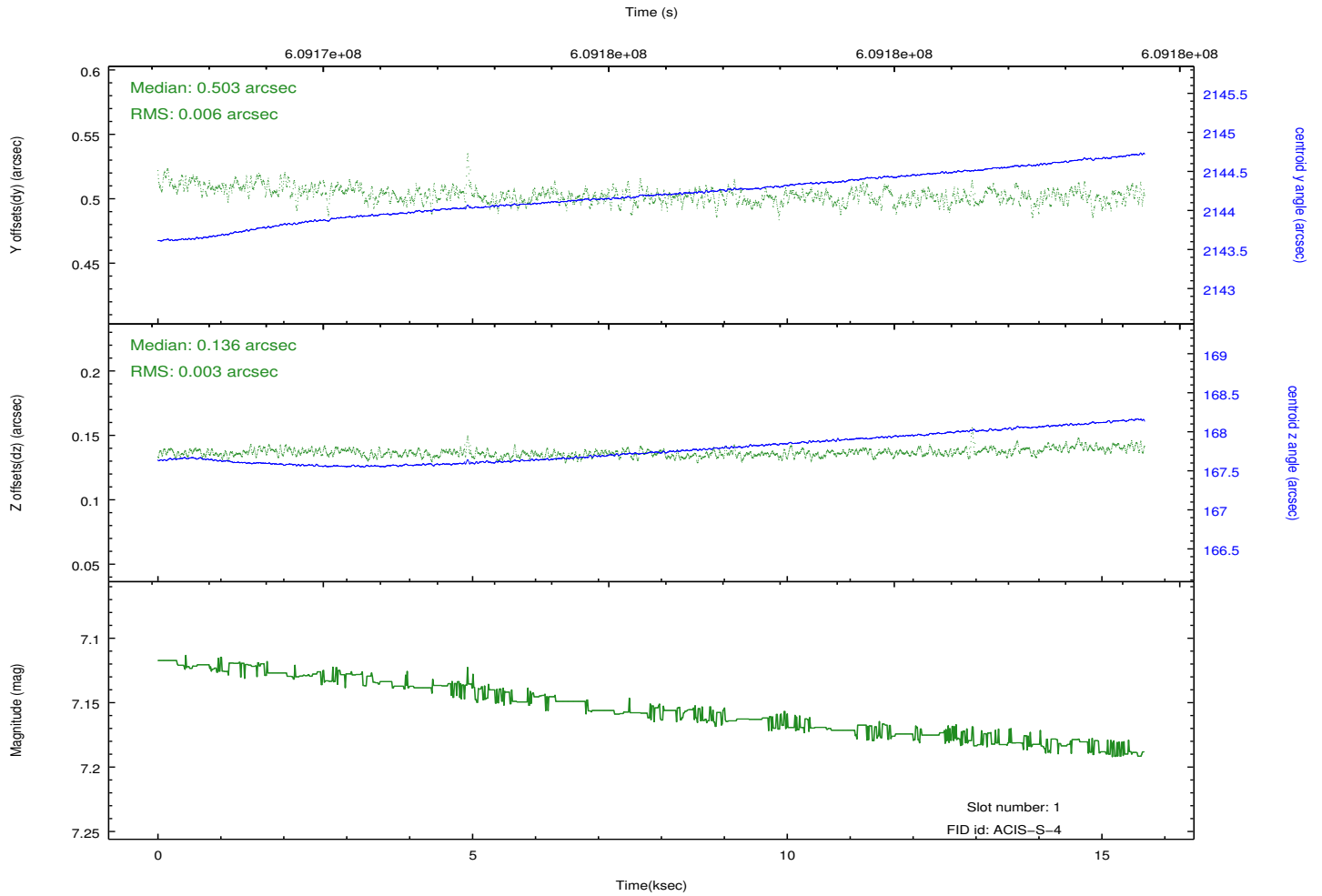
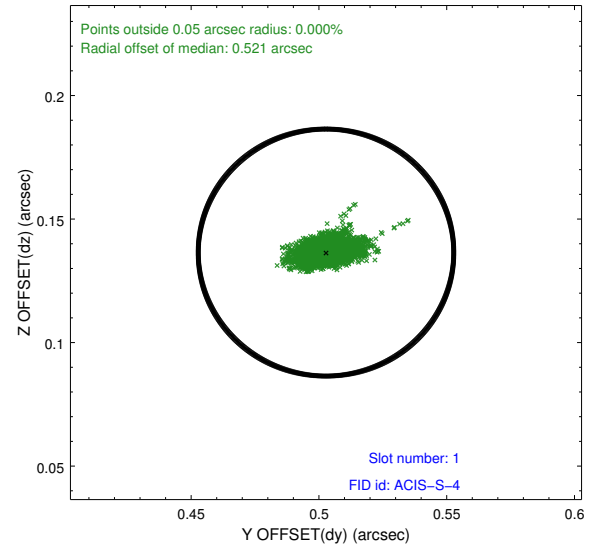
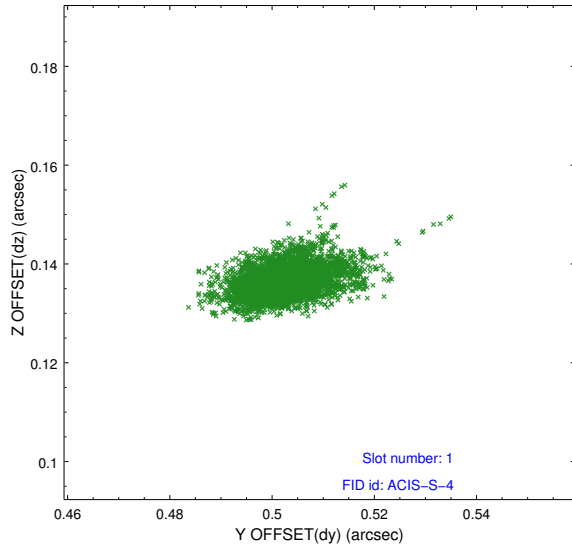


2.5 FID Slots

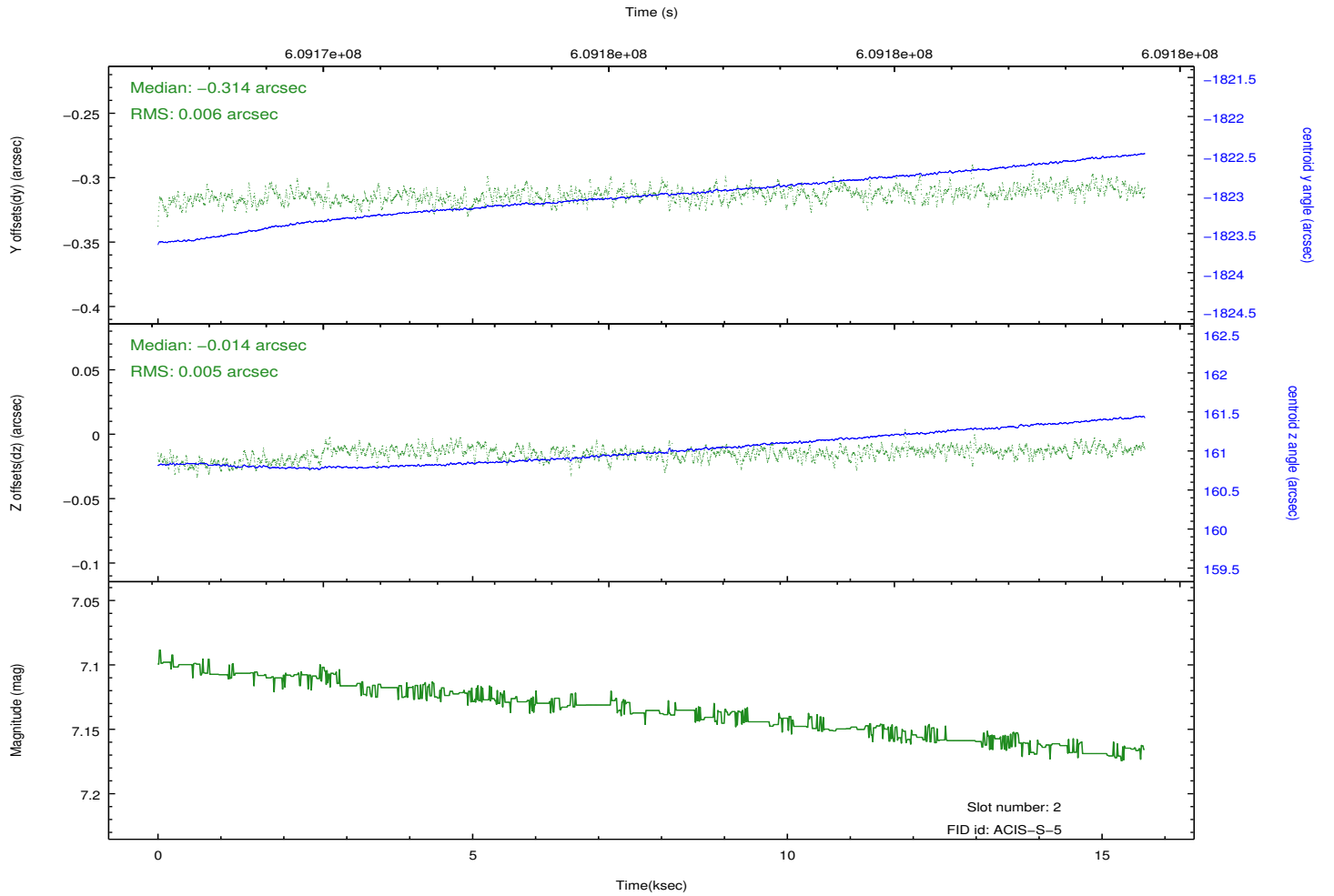
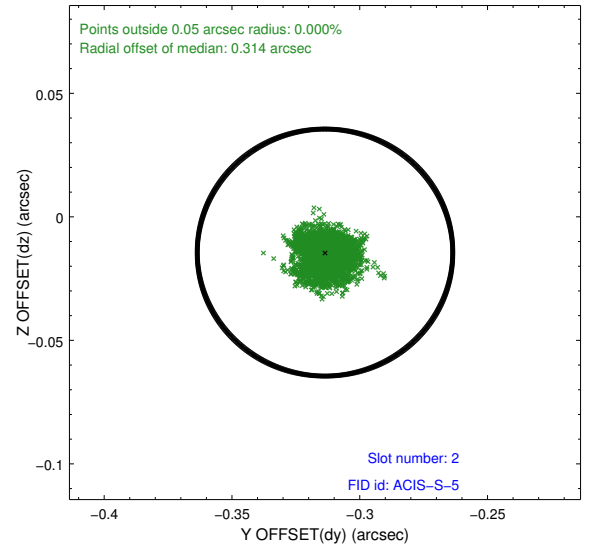
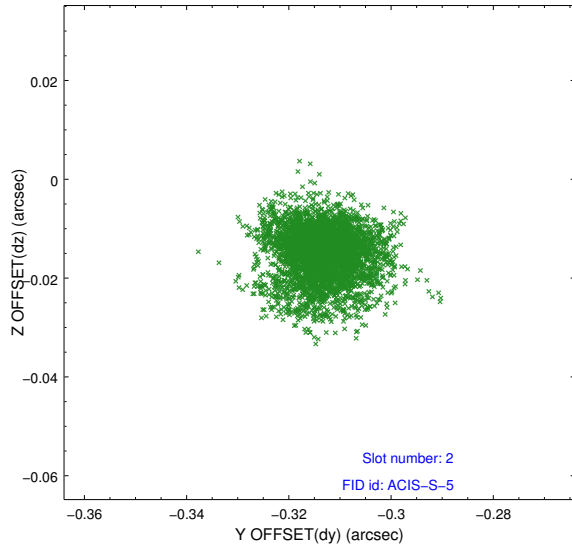
2.5.1 Slot 0



2.5.2 Slot 1



2.5.3 Slot 2



A Summary

A.1 Status

V&V Scientist	Joy Nichols
V&V Date (YYYY-MM-DD)	2017.04.24
V&V Edition	1
V&V Disposition and Status	OK
V&V Charge Time	15.062900115967

A.2 Comments