

V&V Reference Report

L2 ASCDS Version : 10.6

Observation 19328 - L2 Version 1
Chandra X-Ray Center

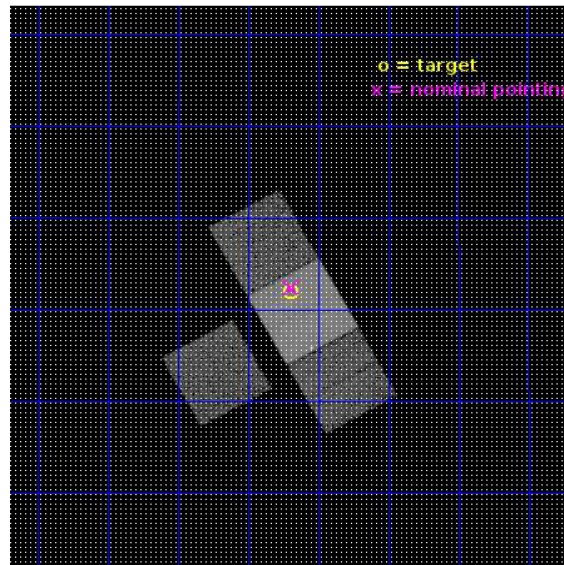
L2 Processing Date : Dec 30 2017

Contents

1	Front	2
2	OBI	3
2.1	OBI	3
2.1.1	Images	3
2.1.2	Bias	3
2.1.3	Parameters	4
2.1.4	Events	4
2.2	Compared Parameters	5
2.3	Aspect	6
2.4	Star Slots	9
2.4.1	Slot 3	9
2.4.2	Slot 4	10
2.4.3	Slot 5	11
2.4.4	Slot 6	12
2.4.5	Slot 7	13
2.5	FID Slots	14
2.5.1	Slot 0	14
2.5.2	Slot 1	15
2.5.3	Slot 2	16
A	Summary	17
A.1	Status	17
A.2	Comments	17

1 Front

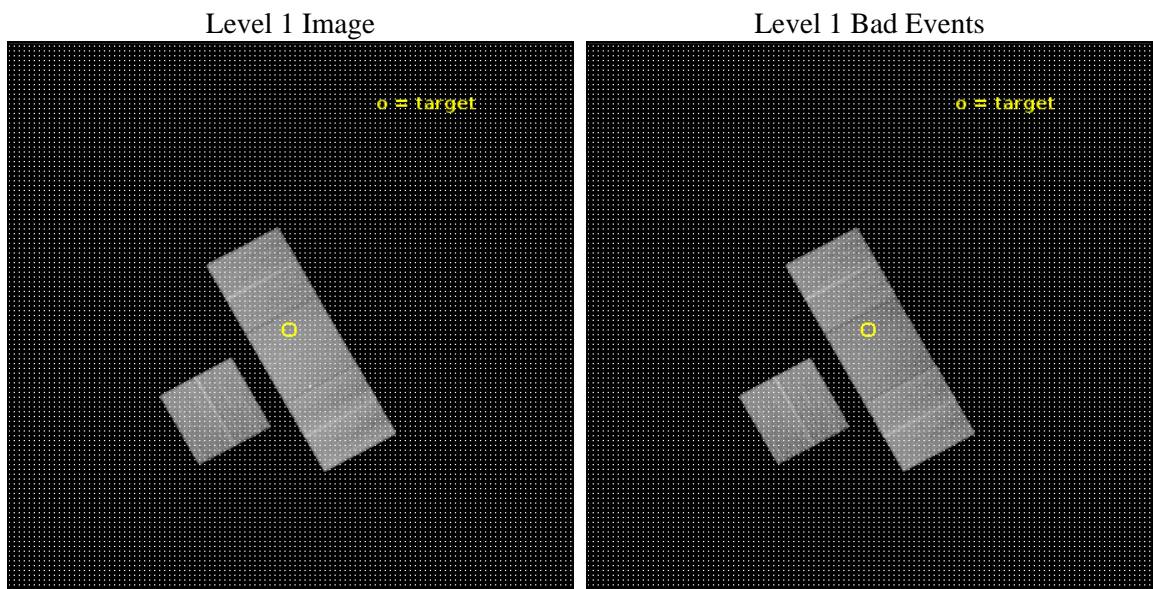
seq_num	601285	Sequence number
obs_id	19328	Observation id
title	Searching for Accreting Black Holes in Lyman Continuum Emitters	Pr
observer	Philip Kaaret	Principal investigator
object	GALEX J085642.1+123157	Source name
dtcycle	0	
cycle	P	events from which exps? Prim/Second/Both
ra_targ	134.175	Observer's specified target RA [deg]
dec_targ	12.532778	Observer's specified target Dec [deg]
ra_nom	134.17307927332	Nominal RA [deg]
dec_nom	12.540254011721	Nominal Dec [deg]
roll_nom	61.15704093199	Nominal Roll [deg]
revision	1	Processing version of data
ontime	22740.844464779	Sum of GTIs [s]
livetime	22443.71859028	Livetime [s]
ontime3	22740.762384772	Sum of GTIs [s]
ontime6	22740.803424835	Sum of GTIs [s]
ontime7	22740.844464779	Sum of GTIs [s]
ontime8	22740.721344829	Sum of GTIs [s]
l2events	140309	Number of level 2 events



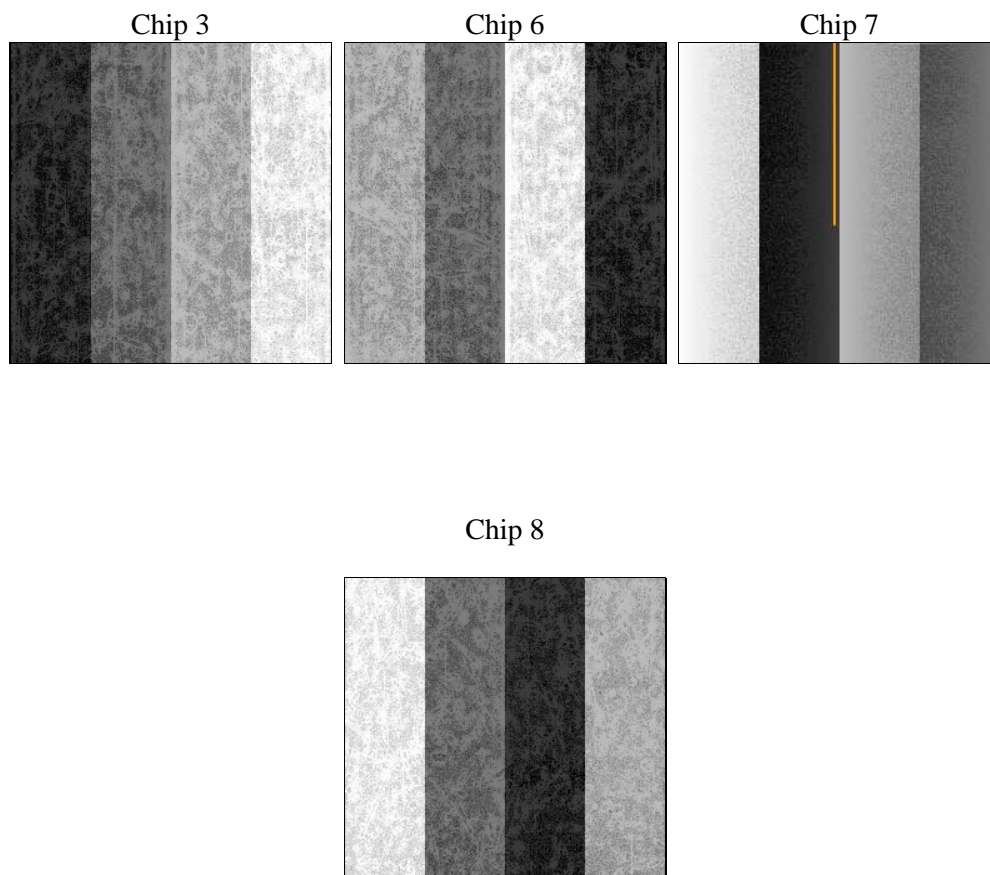
2 OBI

2.1 OBI

2.1.1 Images



2.1.2 Bias



2.1.3 Parameters

obi_num	0	Obi number	sched_exp_time	22674.944000	[s] Scheduled observation exposure time
ascdsver	10.6	Processing system revision	ontime	22740.844464779	Sum of GTIs [s]
caldsver	4.7.7	 	ontime3	22740.762384772	Sum of GTIs [s]
date	2017-12-31T04:23:30	Date and time of file creation	ontime6	22740.803424835	Sum of GTIs [s]
revision	1	Processing version of data	ontime7	22740.844464779	Sum of GTIs [s]
			ontime8	22740.721344829	Sum of GTIs [s]
			l1events	757862	Number of level 1 events

2.1.4 Events

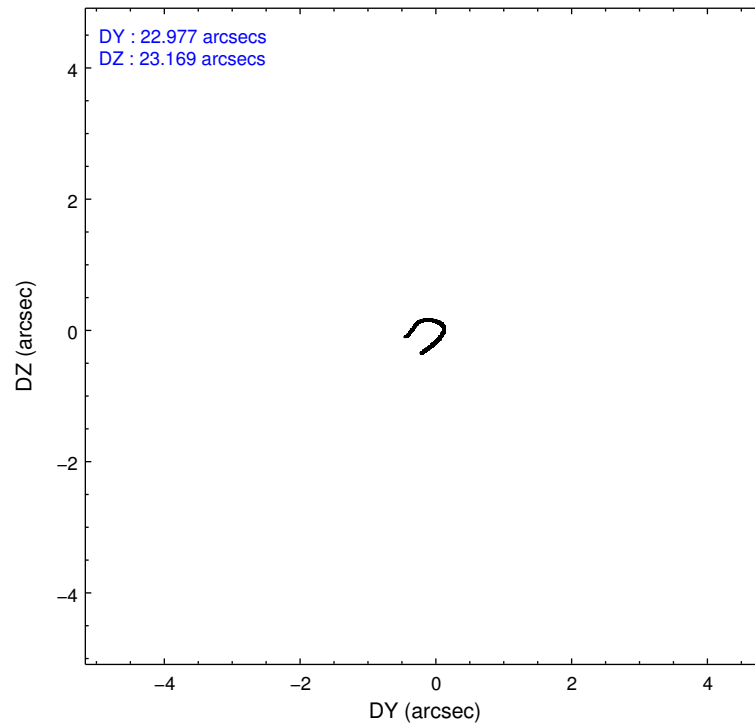
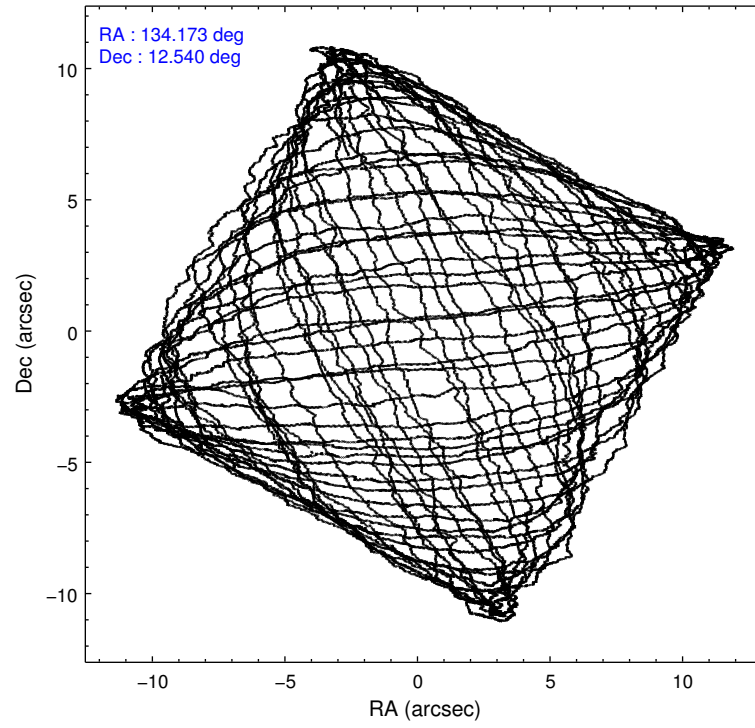
	ccd 3	ccd 6	ccd 7	ccd 8
level 1 events	160629	172676	211961	212596
rejected events	144476	153951	118518	158798
rejected %	89%	89%	55%	74%

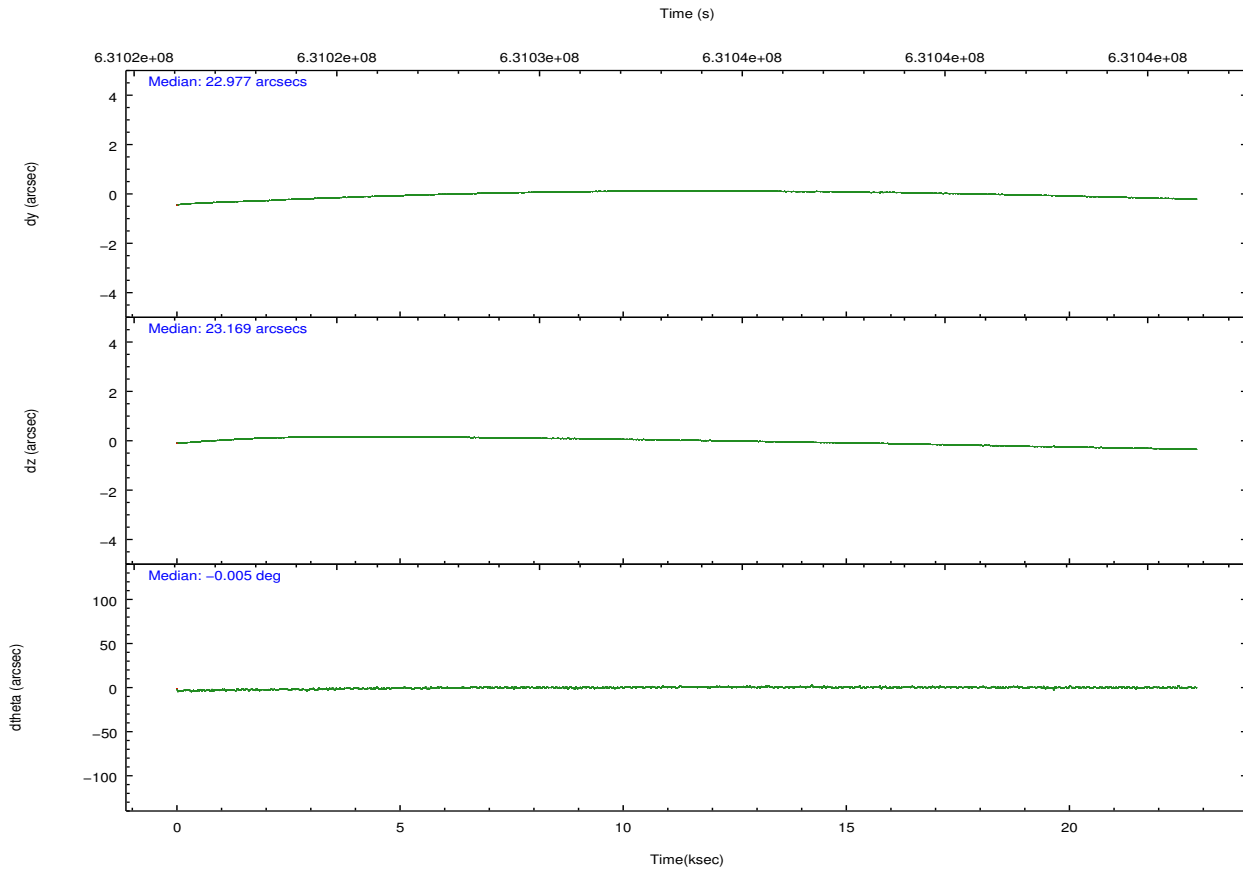
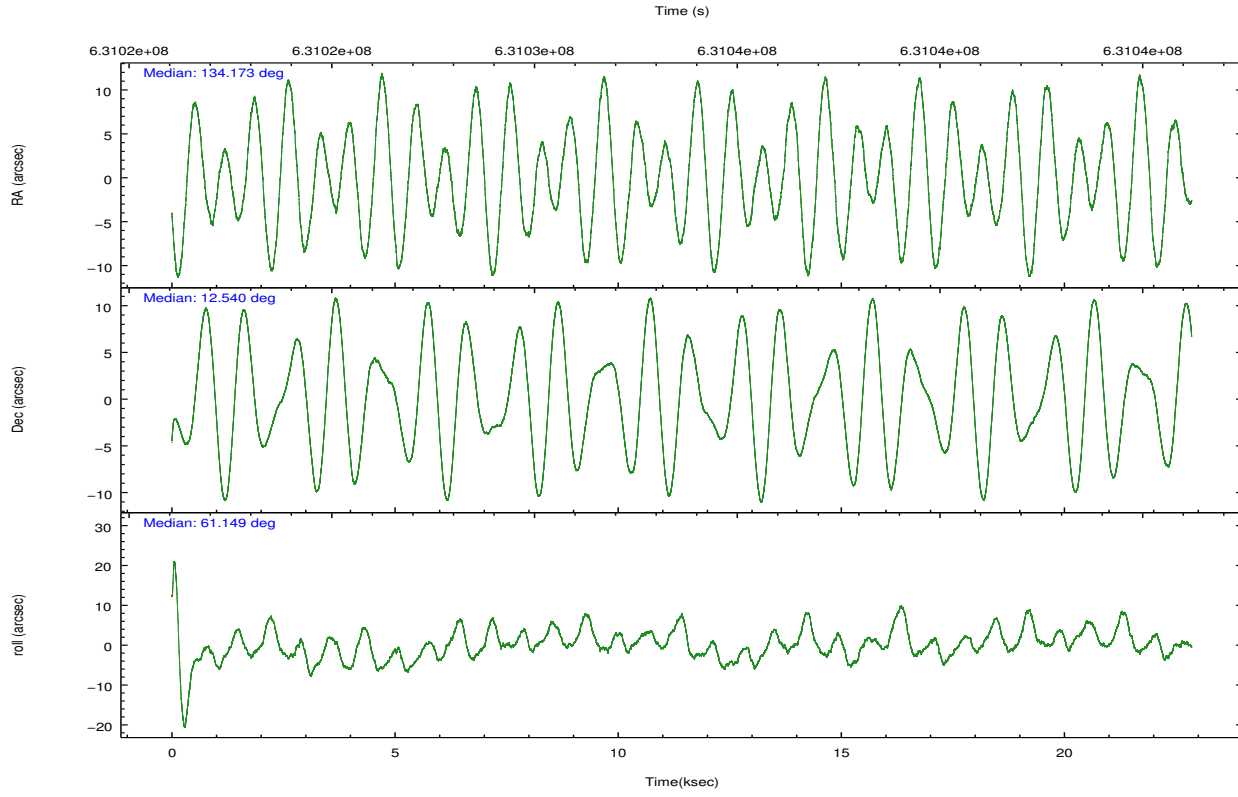
	ccd 3	ccd 6	ccd 7	ccd 8
grade 0 events	5420	5933	8771	14929
	3%	3%	4%	7%
grade 1 events	89	82	332	141
	0%	0%	0%	0%
grade 2 events	3550	4497	19695	13256
	2%	2%	9%	6%
grade 3 events	1731	1735	7601	5716
	1%	1%	3%	2%
grade 4 events	1769	1755	7425	5178
	1%	1%	3%	2%
grade 5 events	7337	7370	20509	11238
	4%	4%	9%	5%
grade 6 events	3687	4811	49965	14726
	2%	2%	23%	6%
grade 7 events	137046	146493	97663	147412
	85%	84%	46%	69%

2.2 Compared Parameters

Parameter	Planned	Actual	Parameter	Planned	Actual
Instrument	ACIS	ACIS	Obspar format version number	7	7
Detector	ACIS-3678	ACIS-3678	Obspar file type	PREDICTED	ACTUAL
Grating	NONE	NONE	Obspar update status	NONE	UPDATED
Data mode	FAINT	FAINT	CCD I0 on	N	N
Observation mode	POINTING	POINTING	CCD I1 on	N	N
[deg] Pointing RA	134.174037	134.1730792733176	CCD I2 on	O1	N
[deg] Pointing Dec	12.512818	12.54025401172146	CCD I3 on	Y	Y
[deg] Pointing Roll	61.000209	61.15704093199041	CCD S0 on	N	N
[mm] SIM focus pos	-0.684267	-0.6828225247311905	CCD S1 on	N	N
[mm] SIM defocus	0	0.001444936568705701	CCD S2 on	Y	Y
[mm] SIM translation stage pos	-190.132523	-190.1400660498719	CCD S3 on	Y	Y
[mm] SIM translation stage offset	0	0.00754346686406393	CCD S4 on	Y	Y
[s] Observation start time (MET)	631022367.184000	631021454.28187	CCD S5 on	N	N
Observation start date	2017-12-30T11:58:18	2017-12-30T11:44:14	Number of optional ACIS chips dropped	1	1
[s] Observation end time (MET)	631045042.184000	631045824.6833	On-chip summing requested	N	N
Observation end date	2017-12-30T18:16:13	2017-12-30T18:30:24	Subarray requested	NONE	NONE
Read mode	TIMED	TIMED	Alternating exposures requested	N	N
			[s] Primary exposure time	0.000000	3.1

2.3 Aspect



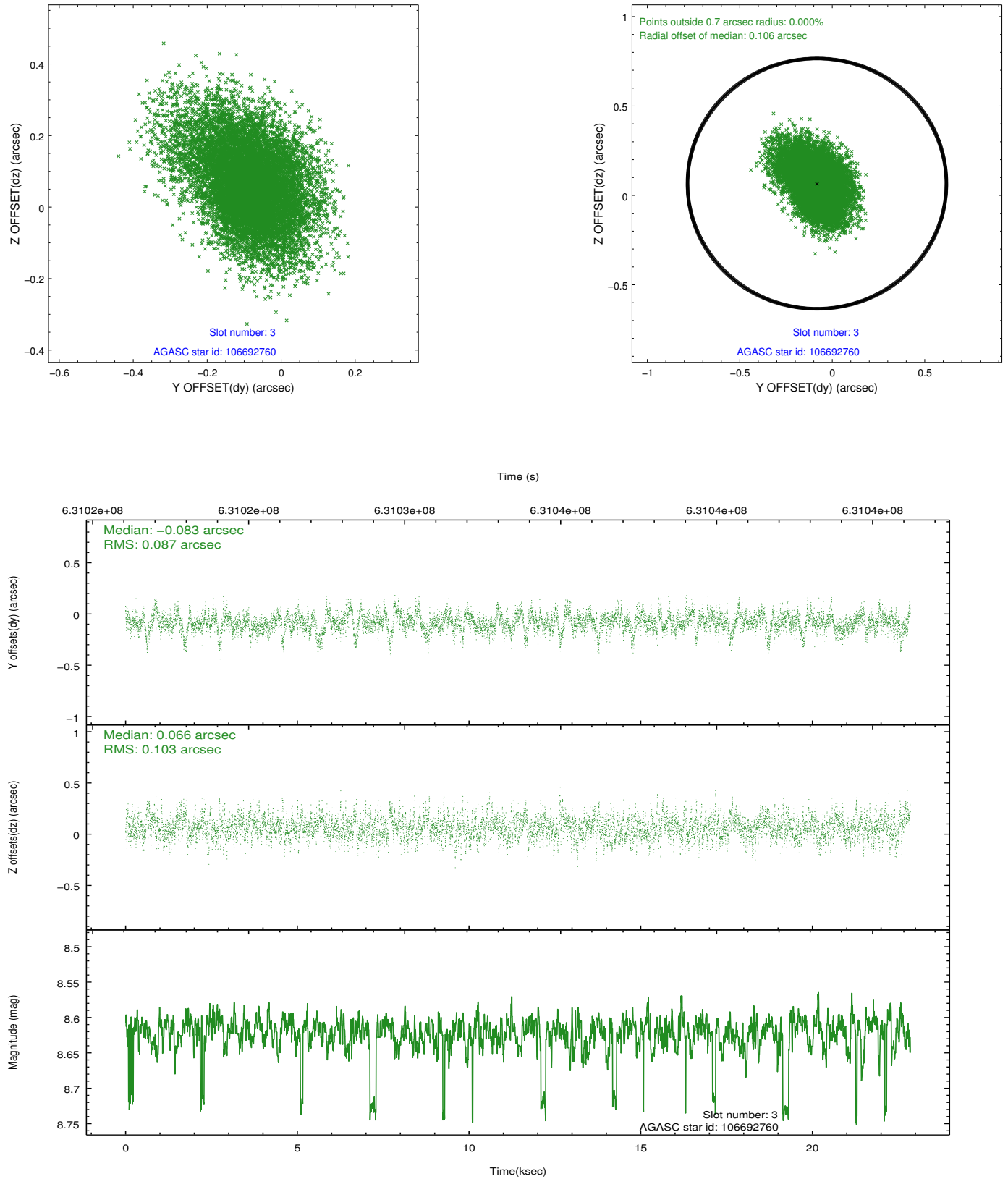


Slot Statistics

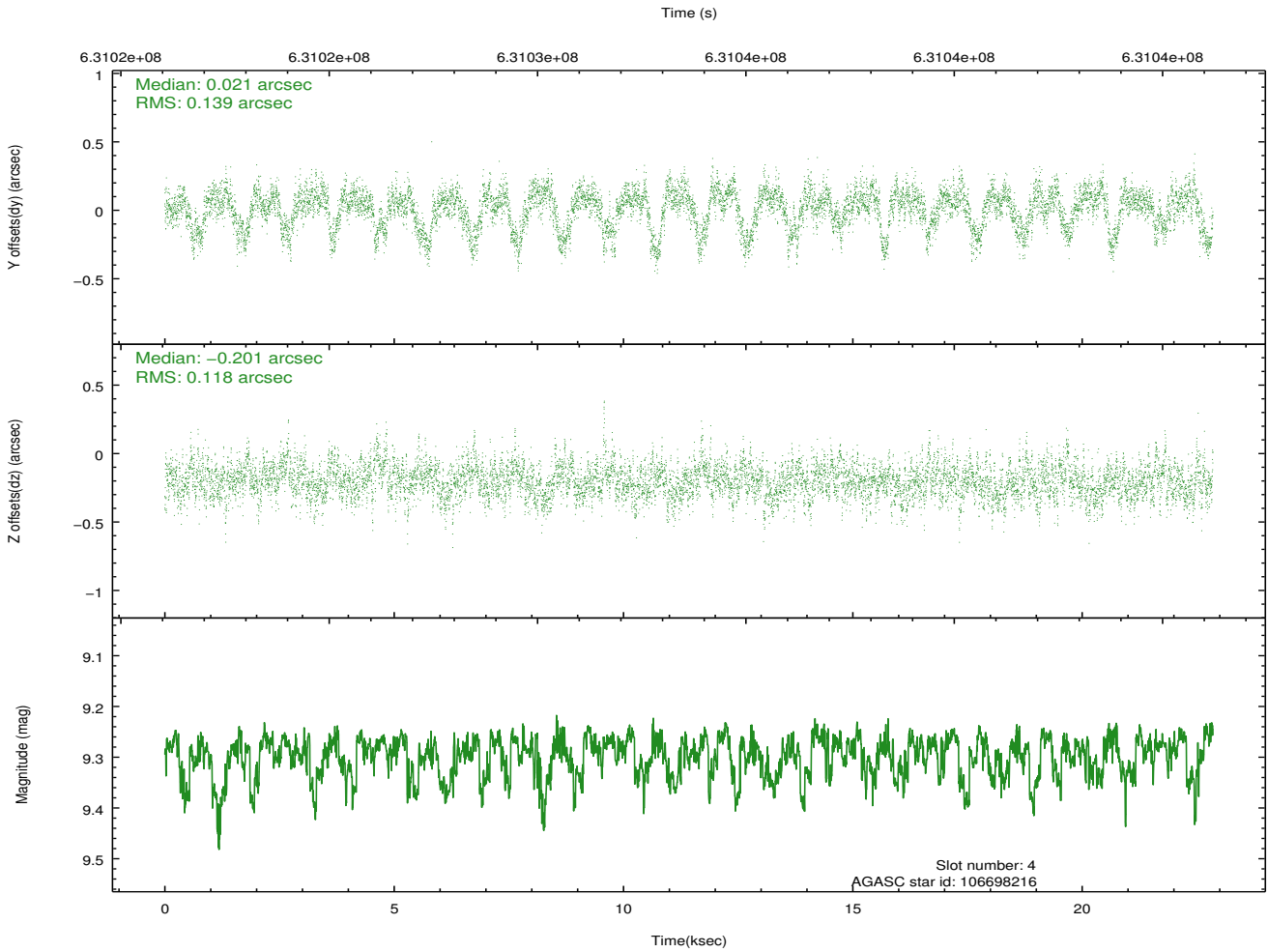
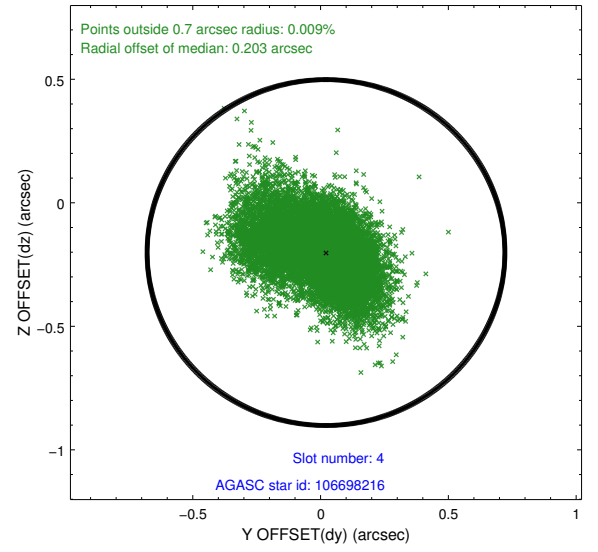
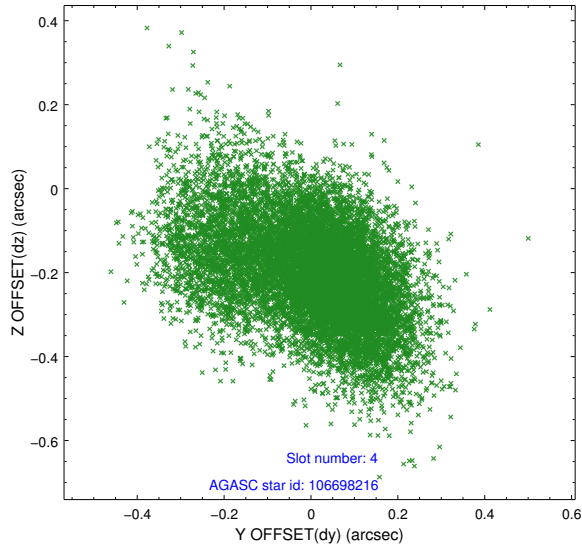
slot	status	used	id	mag	n_pts	med_dy	med_dz	dr1	dr2	ra	dec	mean_y	mean_z
0	FID		ACIS-S-1	7.19	5574	-0.108	-0.032	0.009	0.015	0.000000	0.000000	919.79	-1740.40
1	FID		ACIS-S-4	7.20	5574	0.250	0.070	0.010	0.019	0.000000	0.000000	2137.63	163.70
2	FID		ACIS-S-6	7.38	5574	-0.165	-0.026	0.009	0.015	0.000000	0.000000	385.86	801.13
3	GUIDE	used	106692760	8.62	11138	-0.083	0.066	0.139	0.244	134.420401	12.456940	244.74	-854.48
4	GUIDE	used	106698216	9.30	11132	0.021	-0.201	0.191	0.332	133.898702	12.363693	-938.63	586.19
5	GUIDE	used	106702104	8.07	11144	0.110	0.242	0.161	0.263	134.265458	12.222897	-756.53	-787.03
6	GUIDE	used	107096624	9.27	11139	0.233	-0.069	0.257	0.753	134.774581	12.705055	1631.00	-1507.18
7	GUIDE	used	107104792	8.69	11140	-0.344	-0.017	0.171	0.286	134.738032	12.969915	2400.78	-931.63

2.4 Star Slots

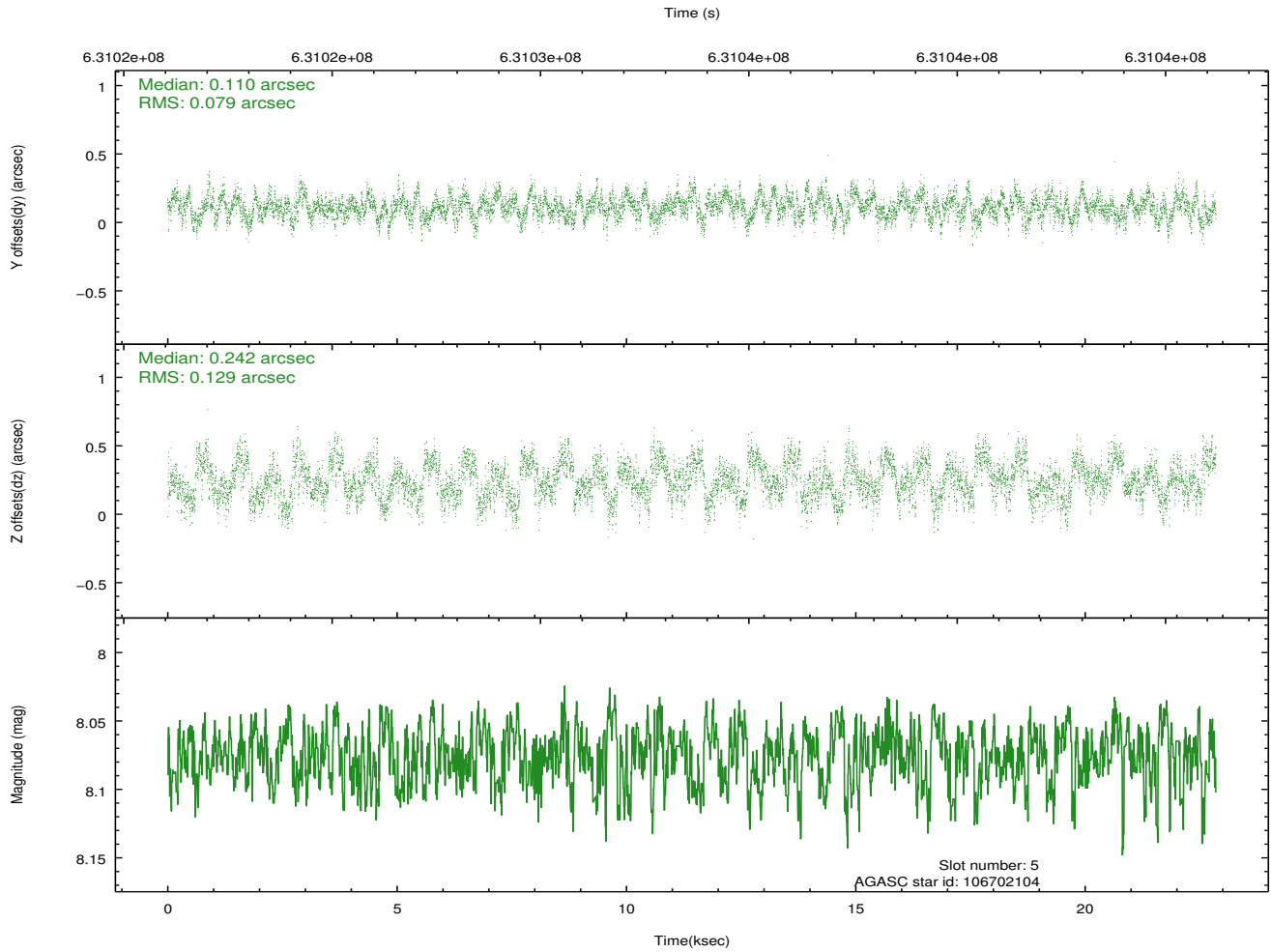
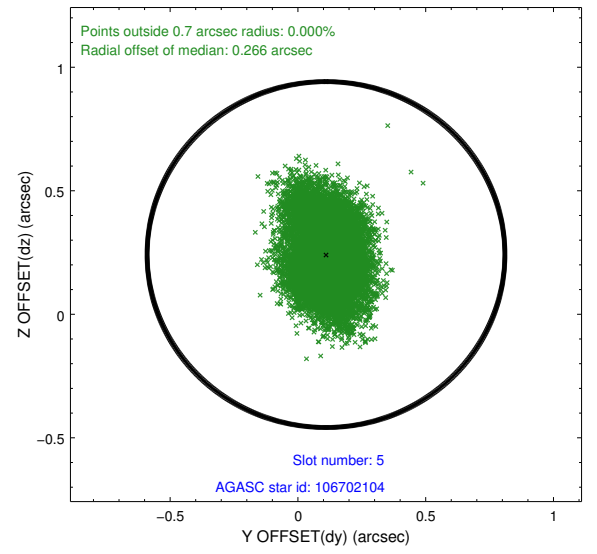
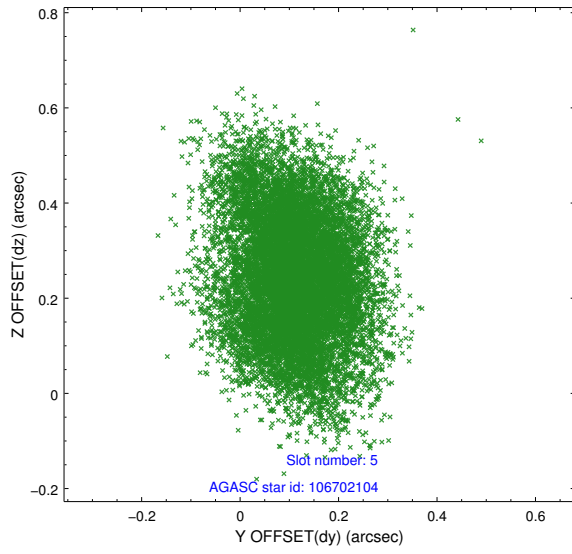
2.4.1 Slot 3



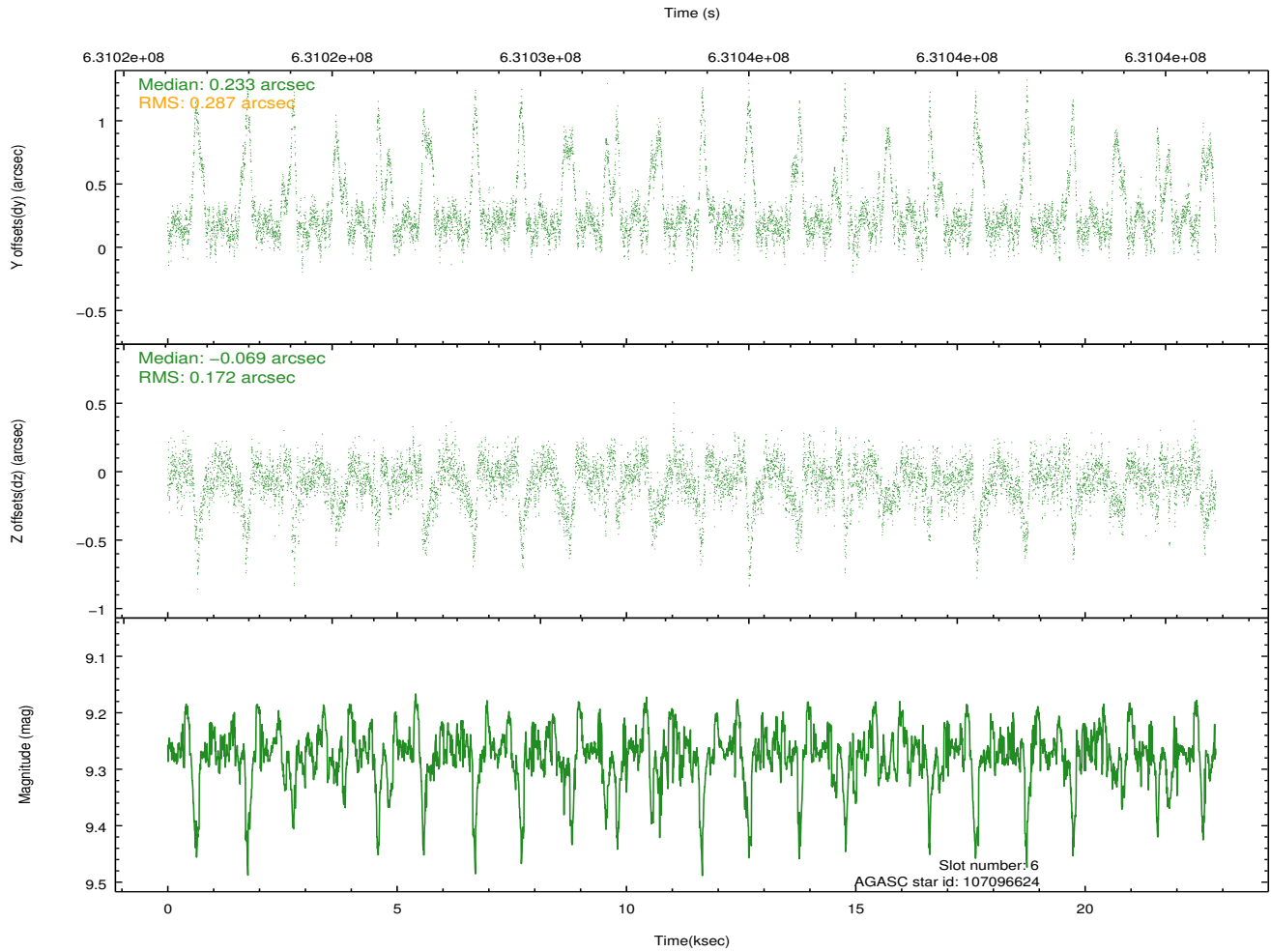
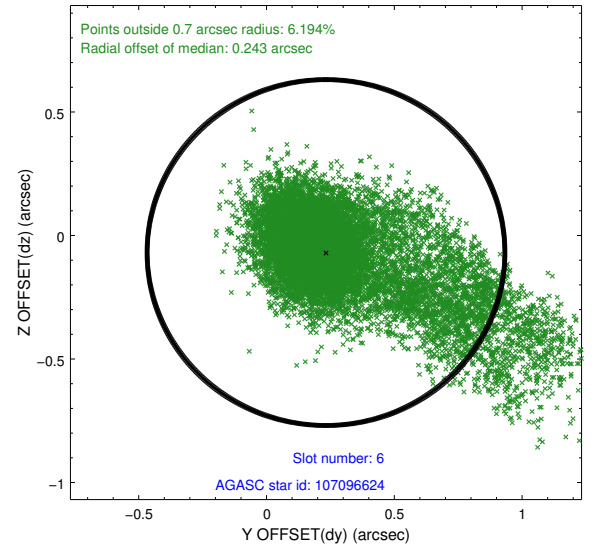
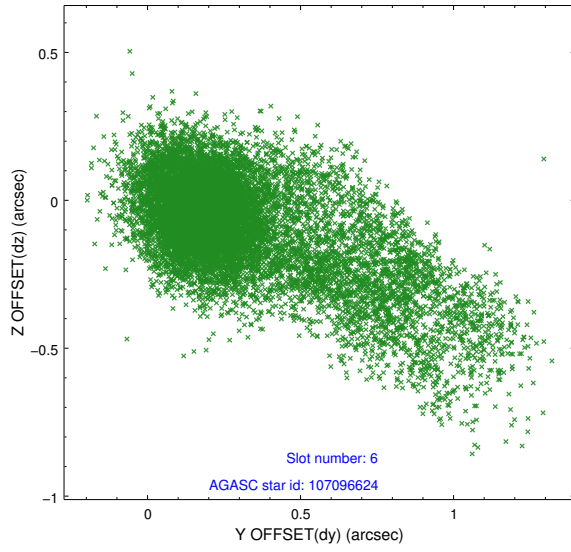
2.4.2 Slot 4



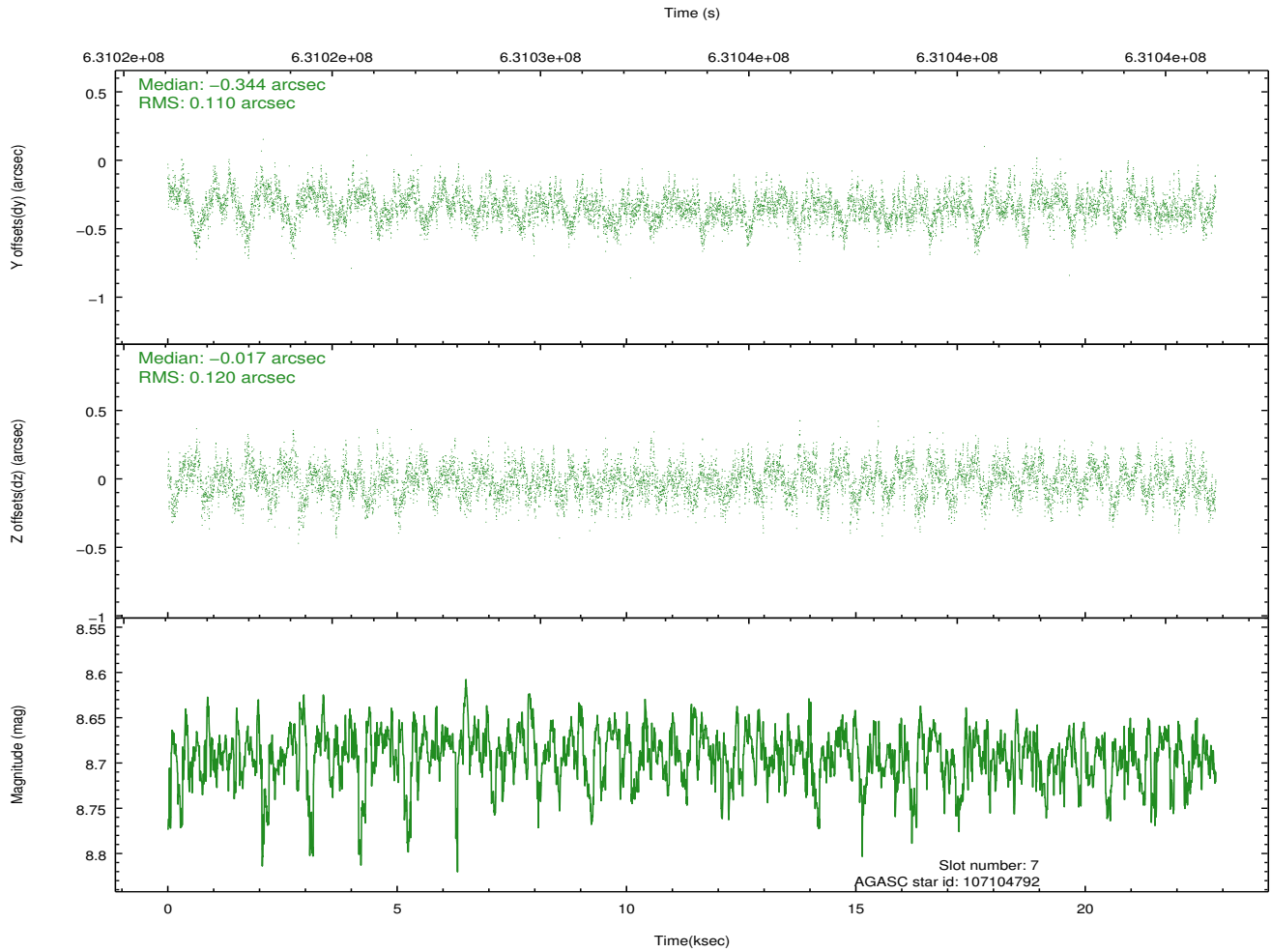
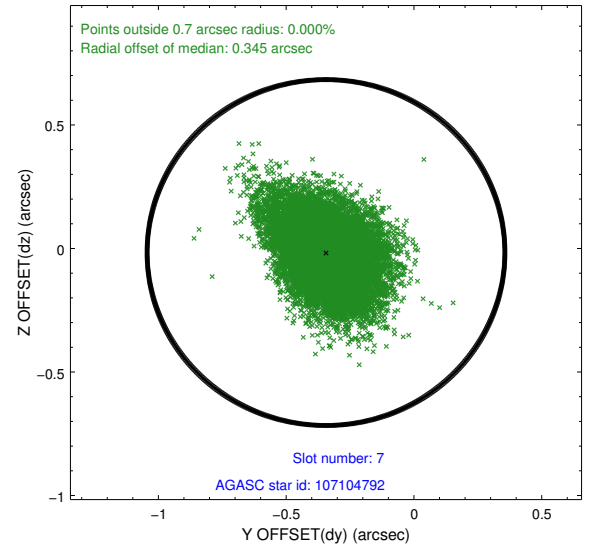
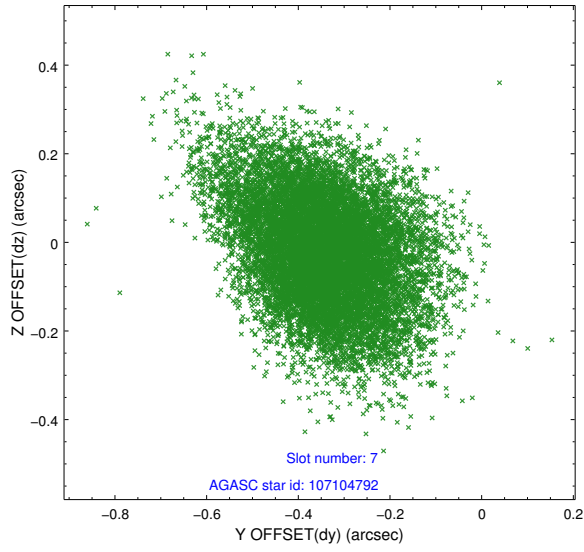
2.4.3 Slot 5



2.4.4 Slot 6

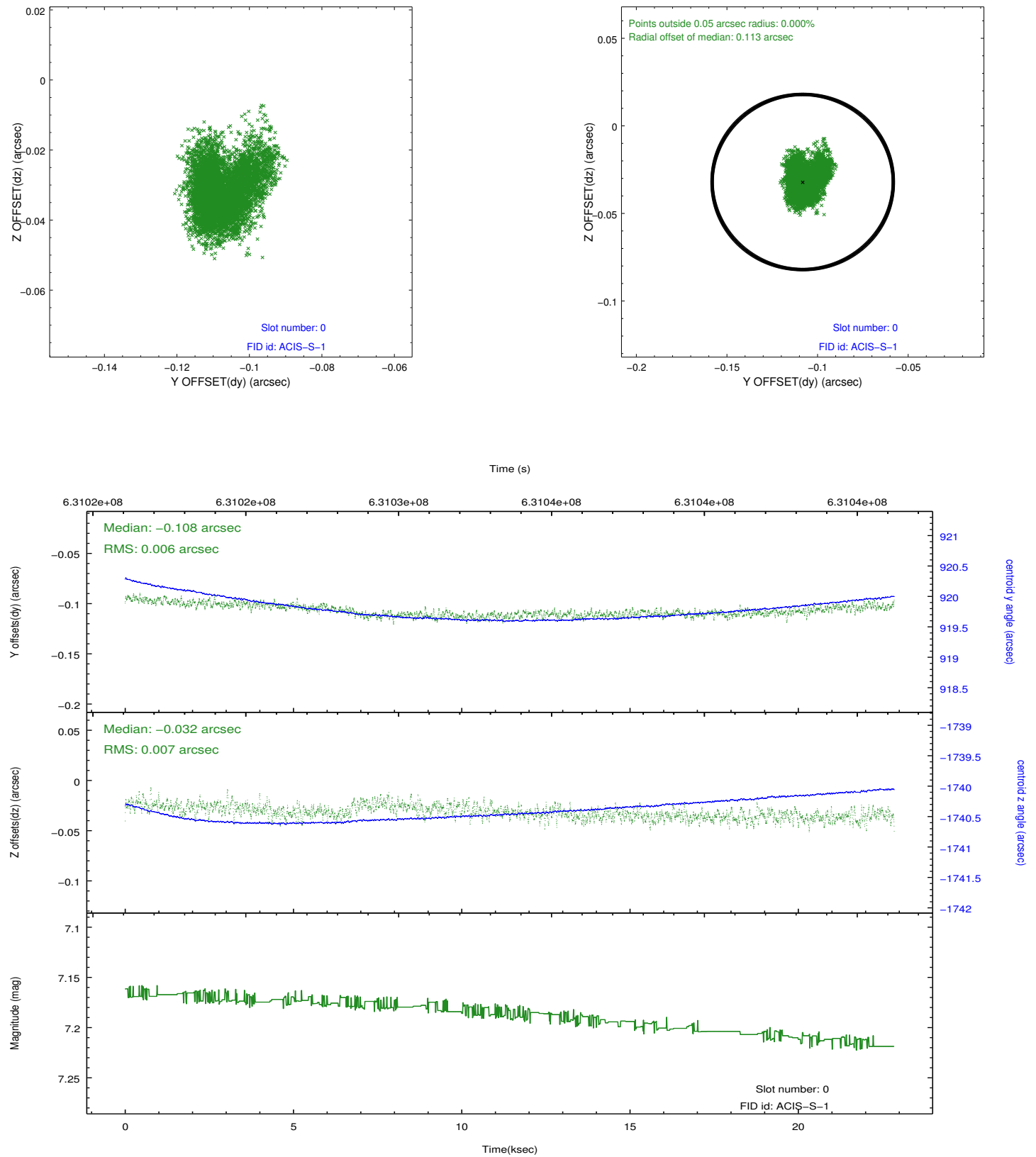


2.4.5 Slot 7

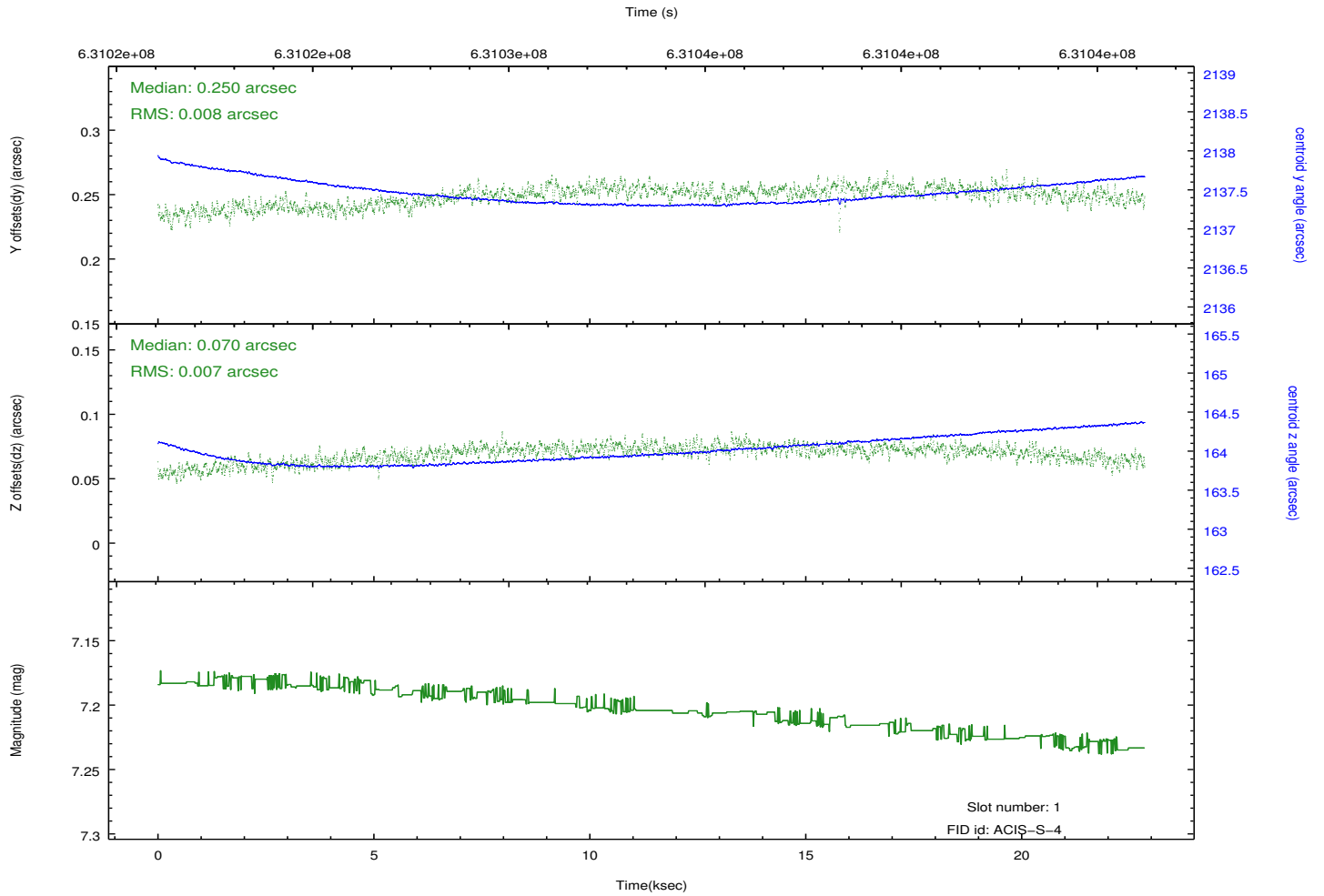
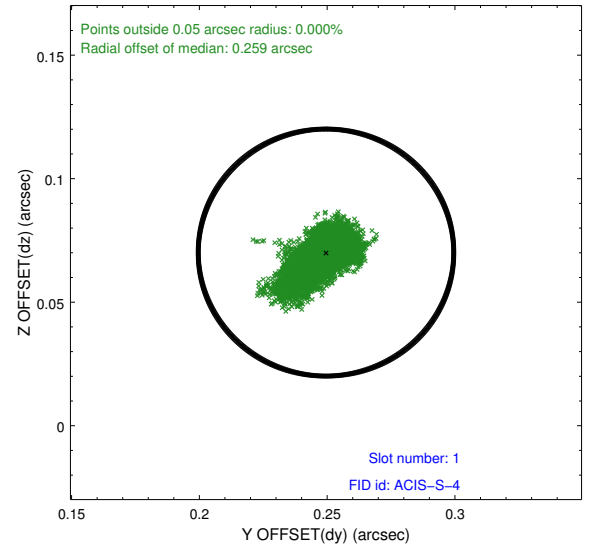
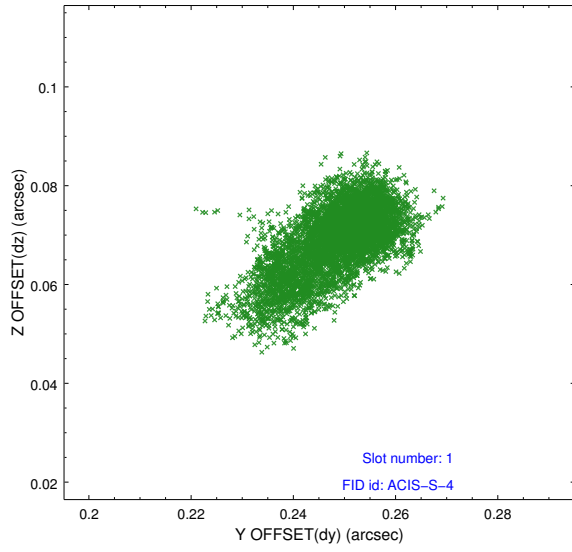


2.5 FID Slots

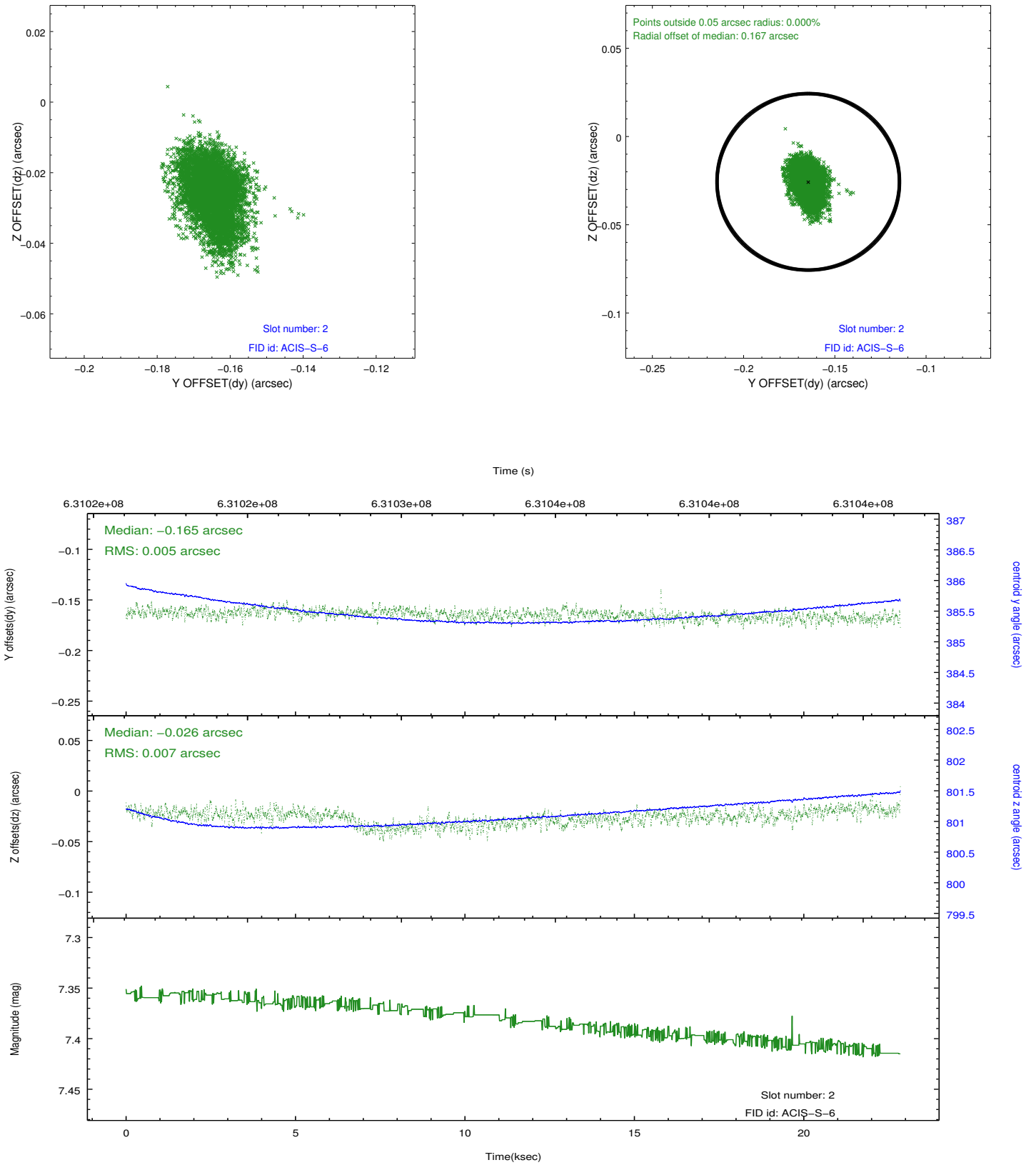
2.5.1 Slot 0



2.5.2 Slot 1



2.5.3 Slot 2



A Summary

A.1 Status

V&V Scientist	Beth Sundheim
V&V Date (YYYY-MM-DD)	2018.01.01
V&V Edition	1
V&V Disposition and Status	OK
V&V Charge Time	22.740844464779

A.2 Comments

One optional chip was dropped.