

V&V Reference Report

L2 ASCDS Version : 10.5.2

Observation 19323 - L2 Version 1
Chandra X-Ray Center

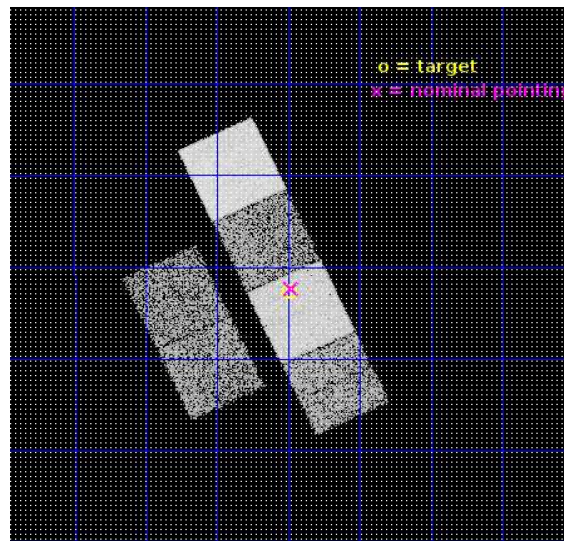
L2 Processing Date : Dec 19 2016

Contents

1	Front	2
2	OBI	3
2.1	OBI	3
2.1.1	Images	3
2.1.2	Bias	3
2.1.3	Parameters	4
2.1.4	Events	4
2.2	Compared Parameters	5
2.3	Aspect	6
2.4	Star Slots	9
2.4.1	Slot 3	9
2.4.2	Slot 4	10
2.4.3	Slot 5	11
2.4.4	Slot 6	12
2.4.5	Slot 7	13
2.5	FID Slots	14
2.5.1	Slot 0	14
2.5.2	Slot 1	15
2.5.3	Slot 2	16
A	Summary	17
A.1	Status	17
A.2	Comments	17

1 Front

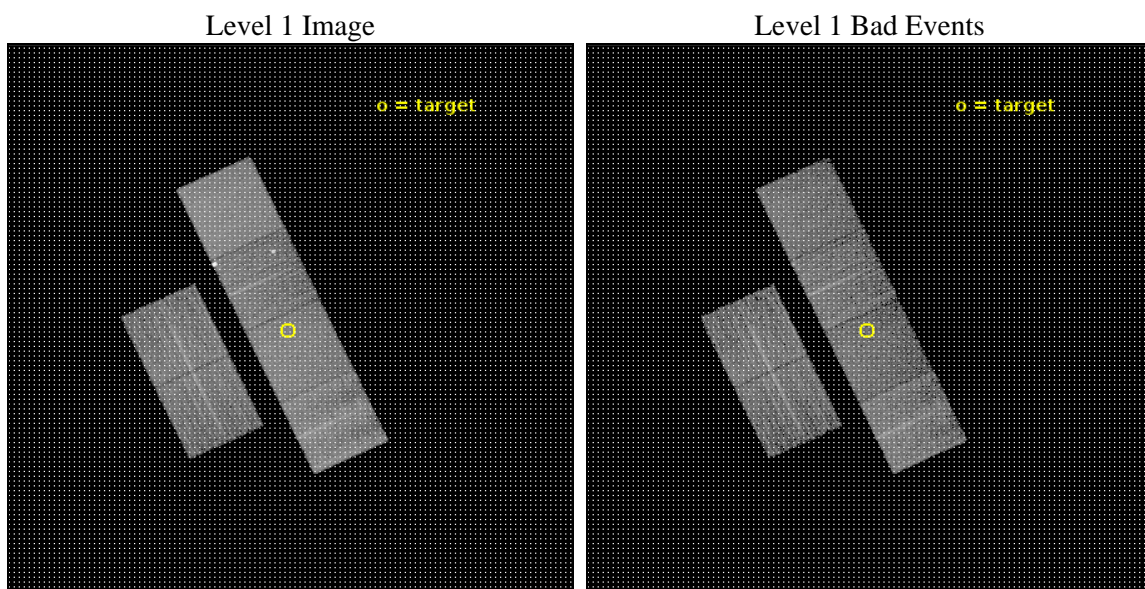
seq_num	601280	Sequence number
obs_id	19323	Observation id
title	A homogeneous view of X-ray halos in massive early-type galaxies	P
observer	Andy Goulding	Principal investigator
object	NGC5493	Source name
dtcycle	0	
cycle	P	events from which exps? Prim/Second/Both
ra_targ	212.8725	Observer's specified target RA [deg]
dec_targ	-5.043611	Observer's specified target Dec [deg]
ra_nom	212.87021994055	Nominal RA [deg]
dec_nom	-5.0390766841131	Nominal Dec [deg]
roll_nom	64.990279416127	Nominal Roll [deg]
revision	1	Processing version of data
ontime	7753.6001155376	Sum of GTIs [s]
livetime	7655.4193622172	Livetime [s]
ontime2	7753.6001155376	Sum of GTIs [s]
ontime3	7753.6001155376	Sum of GTIs [s]
ontime5	7753.6001155376	Sum of GTIs [s]
ontime6	7753.6001155376	Sum of GTIs [s]
ontime7	7753.6001155376	Sum of GTIs [s]
ontime8	7747.1181349754	Sum of GTIs [s]
l2events	92357	Number of level 2 events



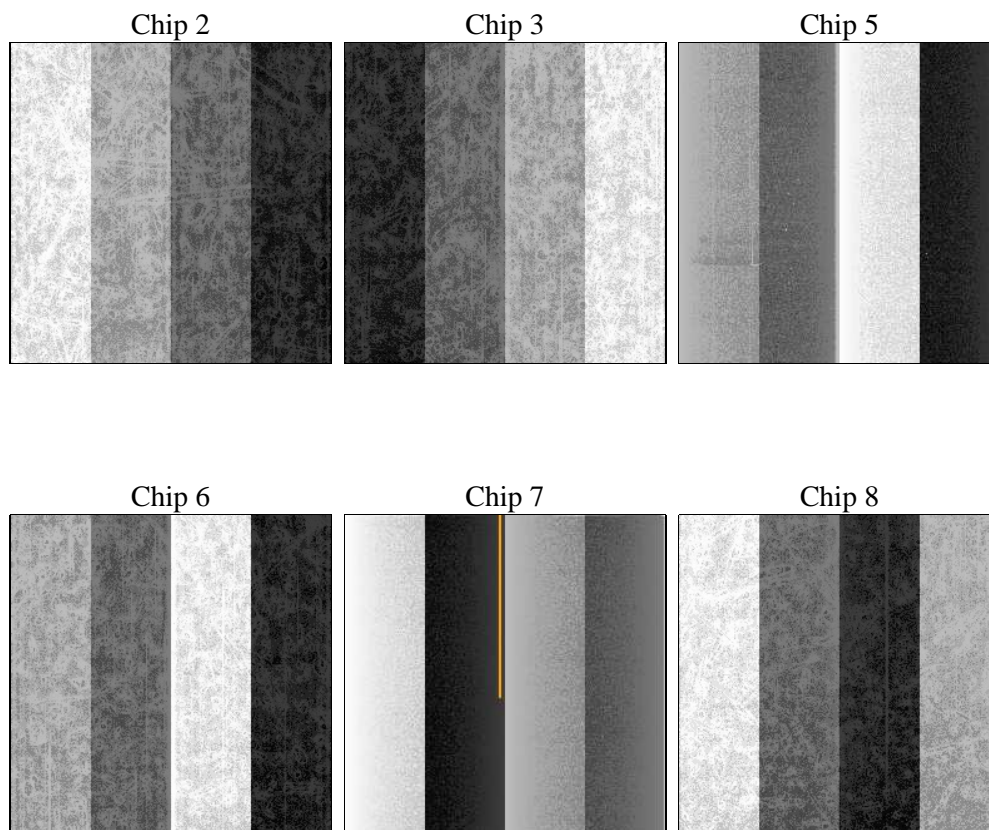
2 OBI

2.1 OBI

2.1.1 Images



2.1.2 Bias



2.1.3 Parameters

obi_num	0	Obi number	sched_exp_time	8000.000000	[s] Scheduled observation exposure time
ascdsver	10.5.2	Processing system revision	ontime	7753.6001155376	Sum of GTIs [s]
caldsver	4.7.3	 	ontime2	7753.6001155376	Sum of GTIs [s]
date	2016-12-19T11:45:49	Date and time of file creation	ontime3	7753.6001155376	Sum of GTIs [s]
revision	1	Processing version of data	ontime5	7753.6001155376	Sum of GTIs [s]
			ontime6	7753.6001155376	Sum of GTIs [s]
			ontime7	7753.6001155376	Sum of GTIs [s]
			ontime8	7747.1181349754	Sum of GTIs [s]
			l1events	408899	Number of level 1 events

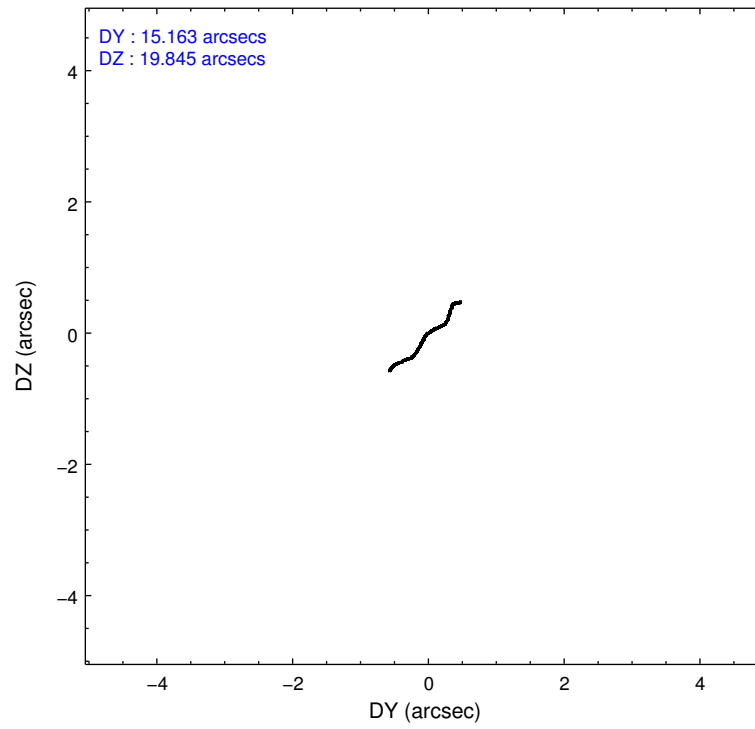
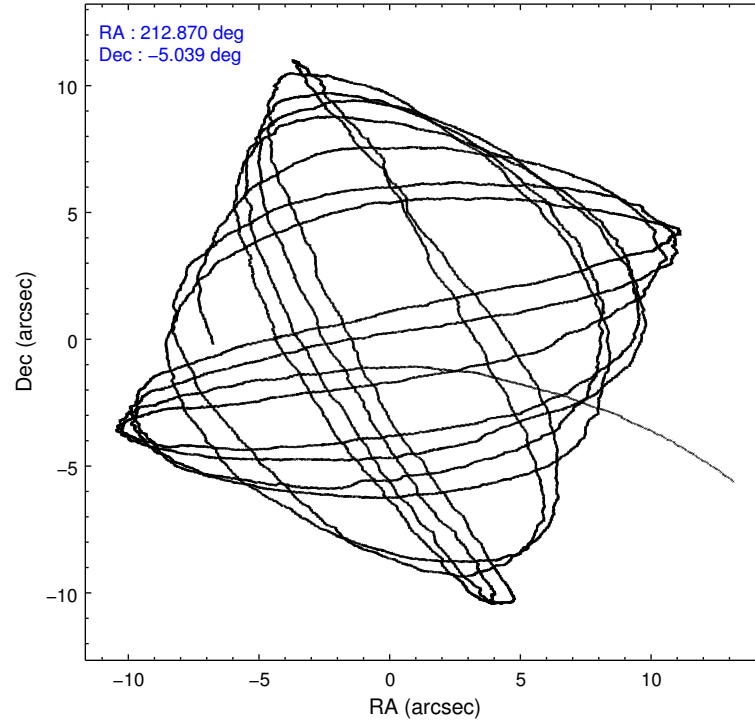
2.1.4 Events

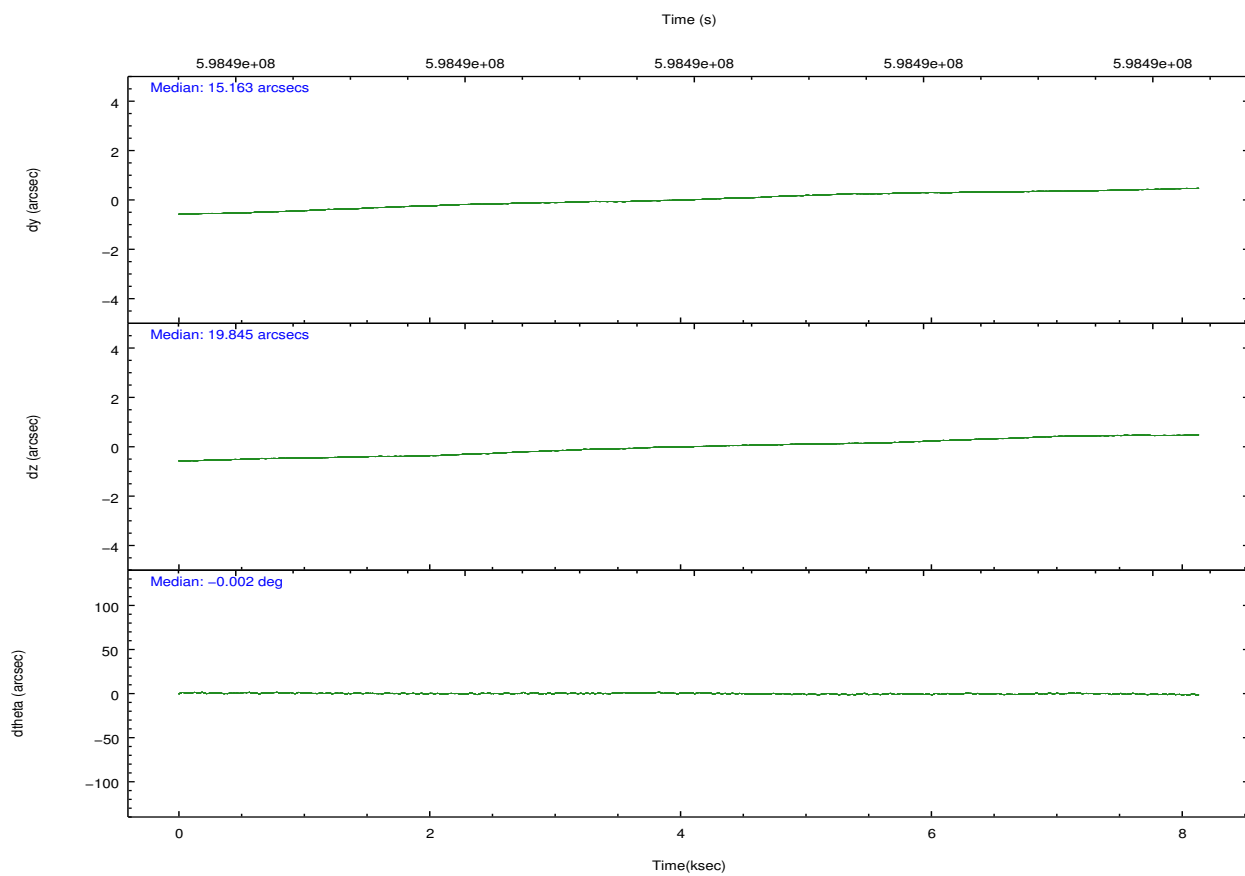
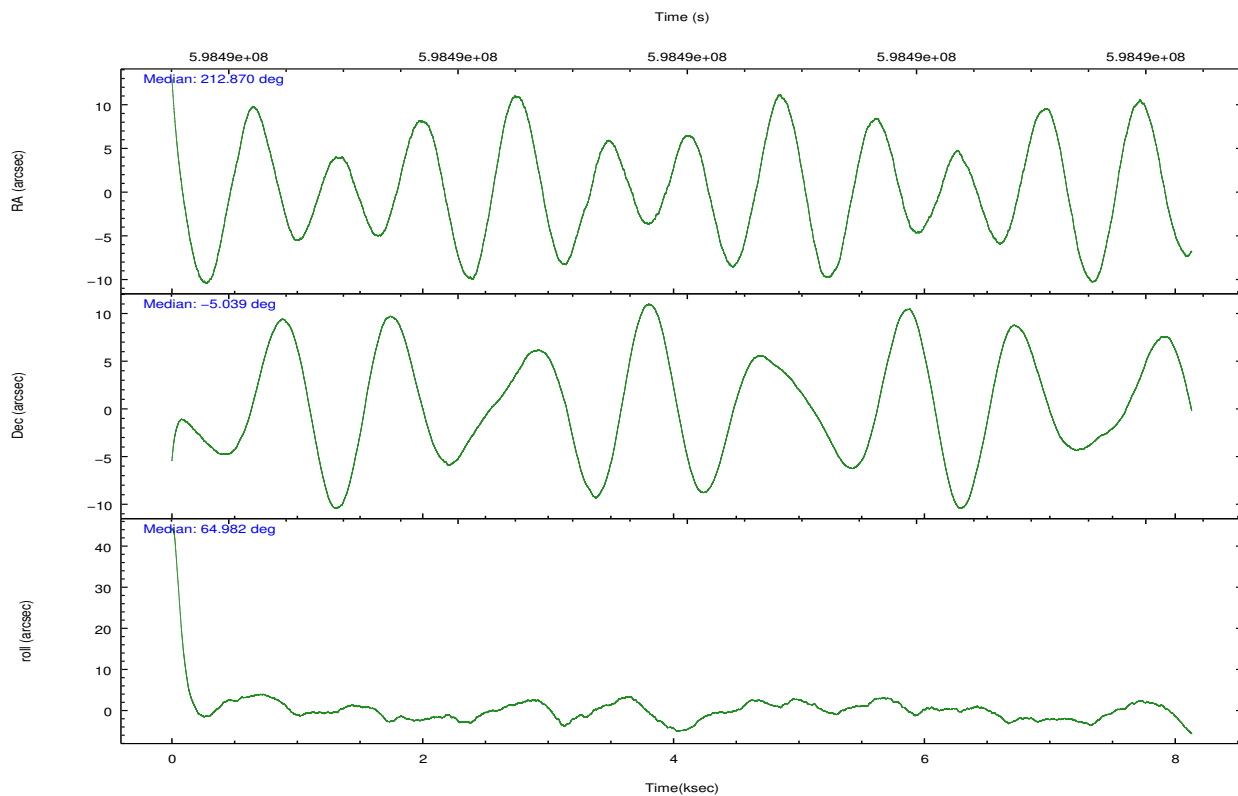
	ccd 2	ccd 3	ccd 5	ccd 6	ccd 7	ccd 8		ccd 2	ccd 3	ccd 5	ccd 6	ccd 7	ccd 8
level 1 events	57913	50870	83953	67525	70046	78592	grade 0 events	2050	2207	2269	6631	2751	6278
rejected events	52048	45010	43267	48522	39040	57570		3%	4%	2%	9%	3%	7%
rejected %	89%	88%	51%	71%	55%	73%	grade 1 events	31	41	163	73	95	60
								0%	0%	0%	0%	0%	0%
							grade 2 events	1490	1257	12877	9697	6534	4979
								2%	2%	15%	14%	9%	6%
							grade 3 events	542	627	1487	623	2622	2132
								0%	1%	1%	0%	3%	2%
							grade 4 events	644	580	1430	648	2578	2026
								1%	1%	1%	0%	3%	2%
							grade 5 events	2264	2522	6184	2654	7197	3855
								3%	4%	7%	3%	10%	4%
							grade 6 events	1144	1194	22639	1410	16532	5610
								1%	2%	26%	2%	23%	7%
							grade 7 events	49748	42442	36904	45789	31737	53652
								85%	83%	43%	67%	45%	68%

2.2 Compared Parameters

Parameter	Planned	Actual	Parameter	Planned	Actual
Instrument	ACIS	ACIS	Obspar format version number	7	7
Detector	ACIS-235678	ACIS-235678	Obspar file type	PREDICTED	ACTUAL
Grating	NONE	NONE	Obspar update status	NONE	UPDATED
Data mode	VFAINT	VFAINT	CCD I0 on	N	N
Observation mode	POINTING	POINTING	CCD I1 on	N	N
[deg] Pointing RA	212.873017	212.8702199405498	CCD I2 on	O1	Y
[deg] Pointing Dec	-5.066396	-5.039076684113078	CCD I3 on	O2	Y
[deg] Pointing Roll	64.833837	64.99027941612702	CCD S0 on	N	N
[mm] SIM focus pos	-0.684267	-0.6828225247311905	CCD S1 on	Y	Y
[mm] SIM defocus	0	0.001444936568705701	CCD S2 on	Y	Y
[mm] SIM translation stage pos	-190.132523	-190.1425803651734	CCD S3 on	Y	Y
[mm] SIM translation stage offset	0	0.01005778216563158	CCD S4 on	Y	Y
[s] Observation start time (MET)	598486019.184000	598484950.16046	CCD S5 on	N	N
Observation start date	2016-12-18T22:05:51	2016-12-18T21:49:10	Number of optional ACIS chips dropped	0	0
[s] Observation end time (MET)	598494019.184000	598495037.18604	On-chip summing requested	N	N
Observation end date	2016-12-19T00:19:11	2016-12-19T00:37:17	Subarray requested	NONE	NONE
Read mode	TIMED	TIMED	Alternating exposures requested	N	N
			[s] Primary exposure time	0.000000	3.2

2.3 Aspect



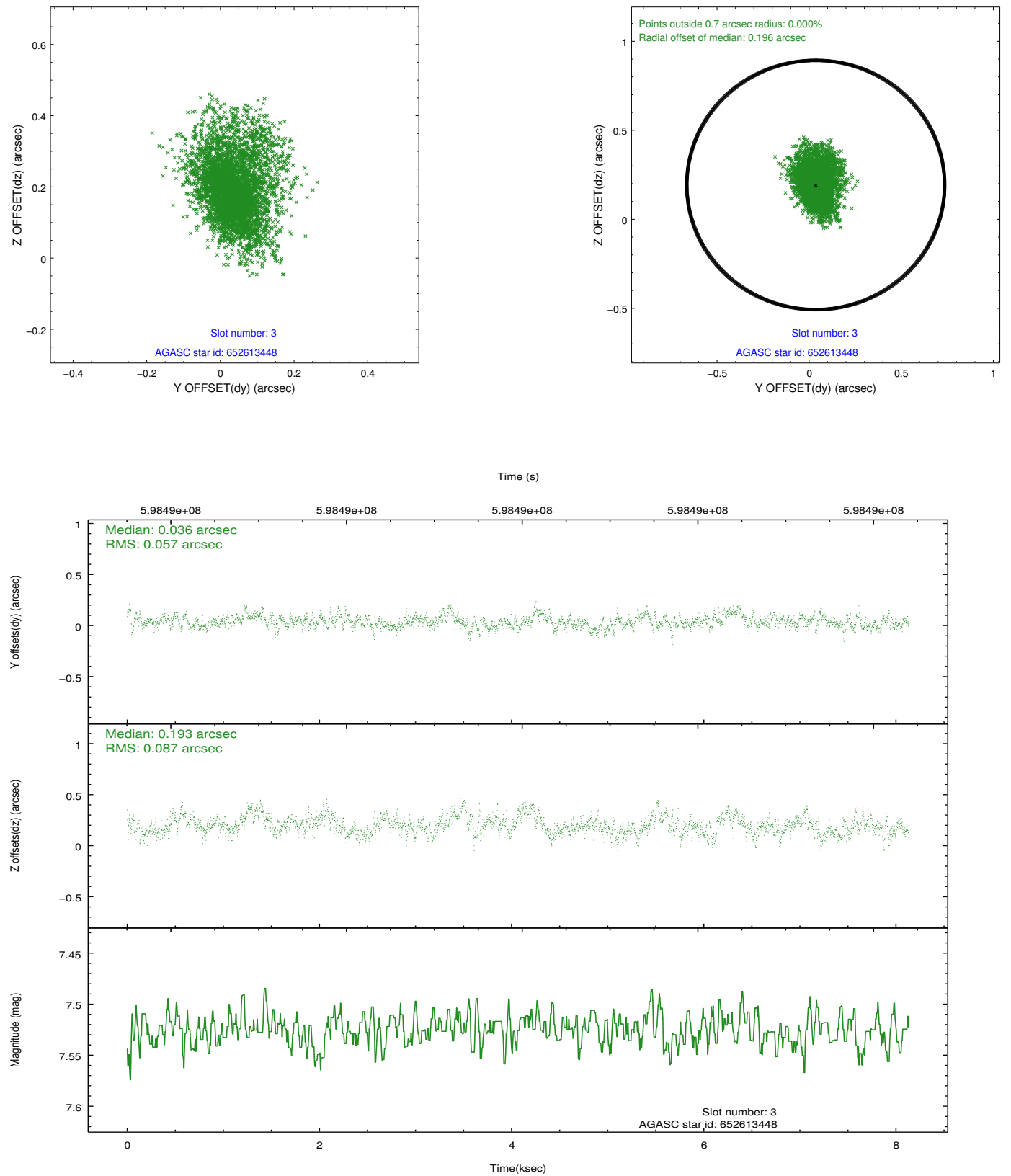


Slot Statistics

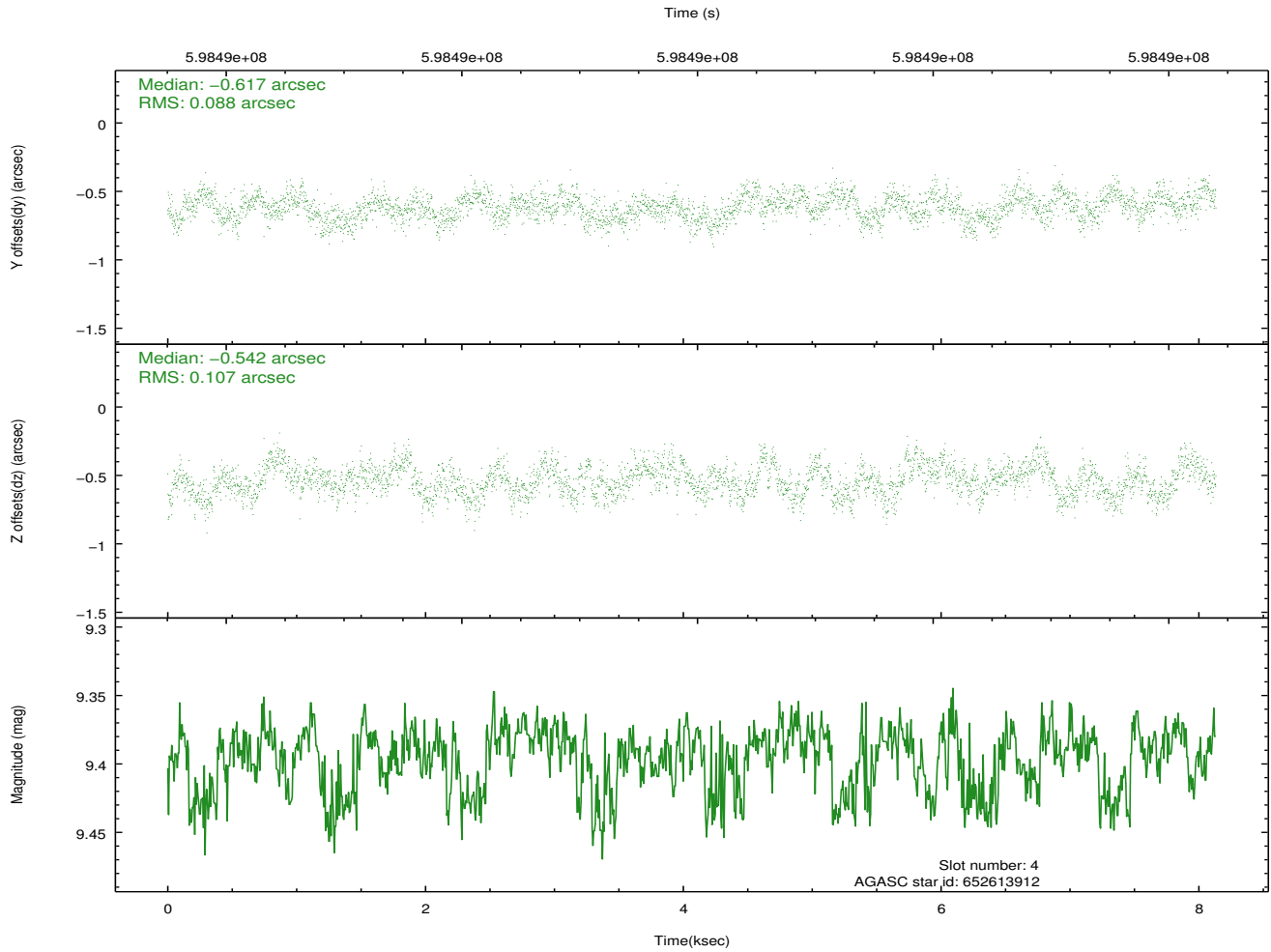
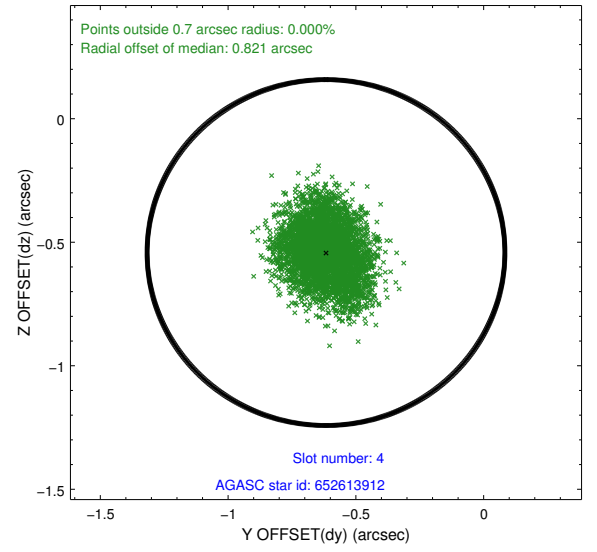
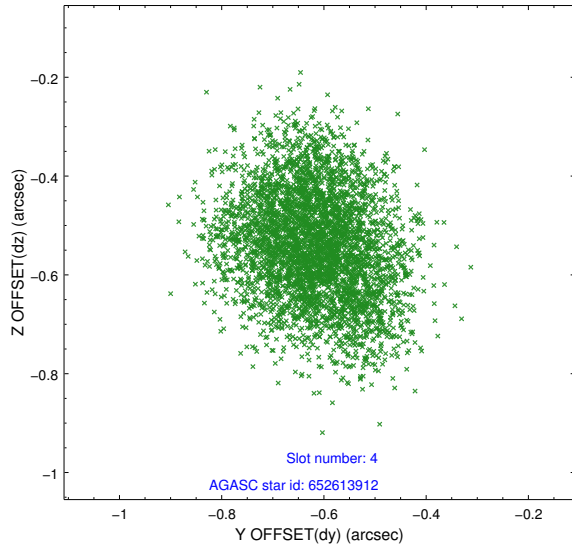
slot	status	used	id	mag	n_pts	med_dy	med_dz	dr1	dr2	ra	dec	mean_y	mean_z
0	FID		ACIS-S-2	7.01	1983	-0.277	-0.172	0.009	0.016	0.000000	0.000000	-768.47	-1741.42
1	FID		ACIS-S-4	7.13	1984	0.304	0.166	0.011	0.018	0.000000	0.000000	2145.12	166.59
2	FID		ACIS-S-6	7.25	1984	-0.055	0.014	0.007	0.012	0.000000	0.000000	394.69	804.67
3	GUIDE	used	652613448	7.53	3967	0.036	0.193	0.108	0.191	213.614341	-4.785604	2045.05	-1976.85
4	GUIDE	used	652613912	9.39	3966	-0.617	-0.542	0.151	0.236	212.821800	-4.366200	2203.37	1237.47
5	GUIDE	used	652869864	8.53	3965	0.214	-0.205	0.116	0.181	212.463540	-5.024540	-487.87	1393.03
6	GUIDE	used	653005776	8.17	3967	0.334	0.012	0.119	0.199	212.630781	-5.457628	-1643.91	186.86
7	GUIDE	used	653007712	9.89	3964	0.030	0.516	0.228	0.407	213.395959	-5.220112	295.98	-1932.02

2.4 Star Slots

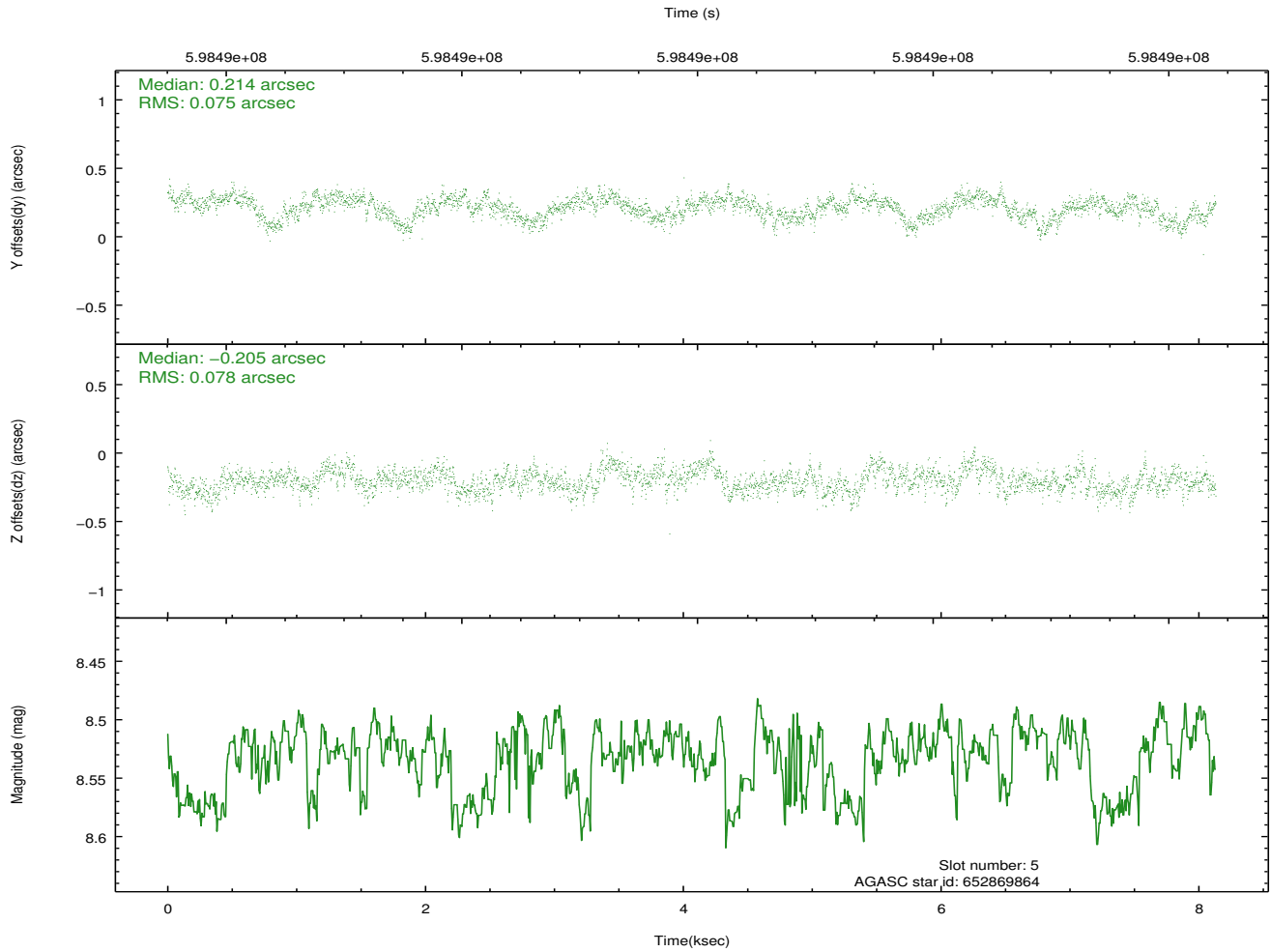
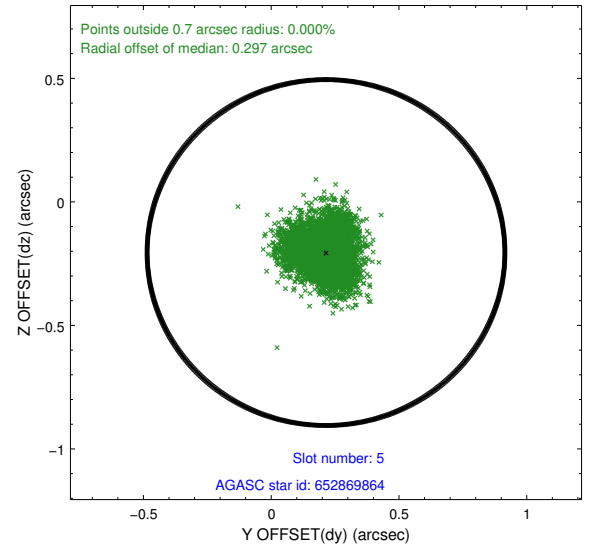
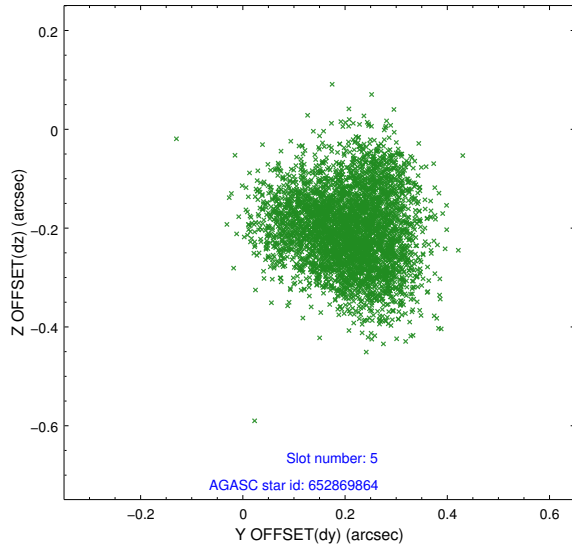
2.4.1 Slot 3



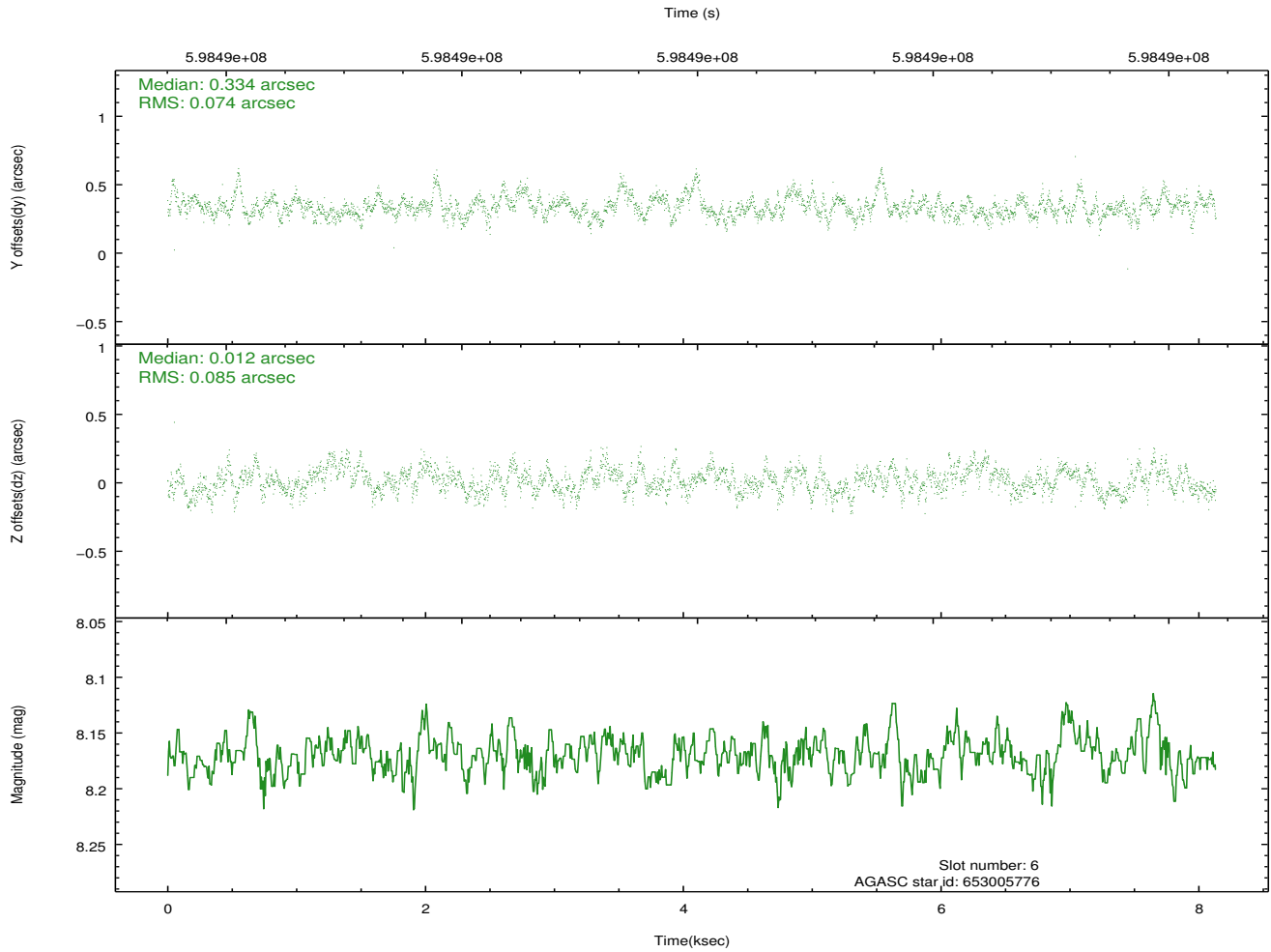
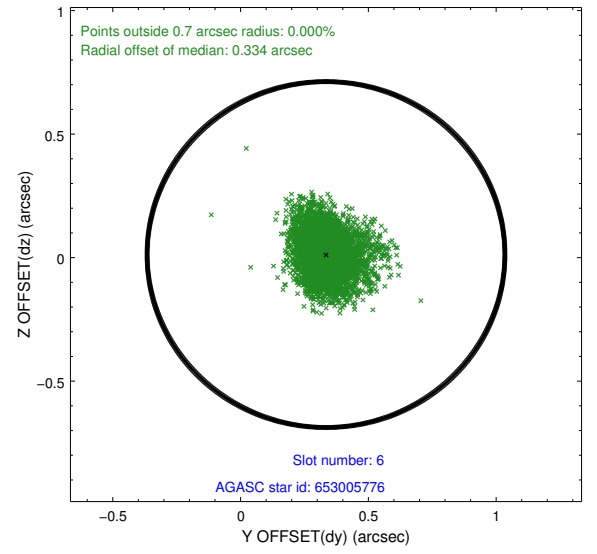
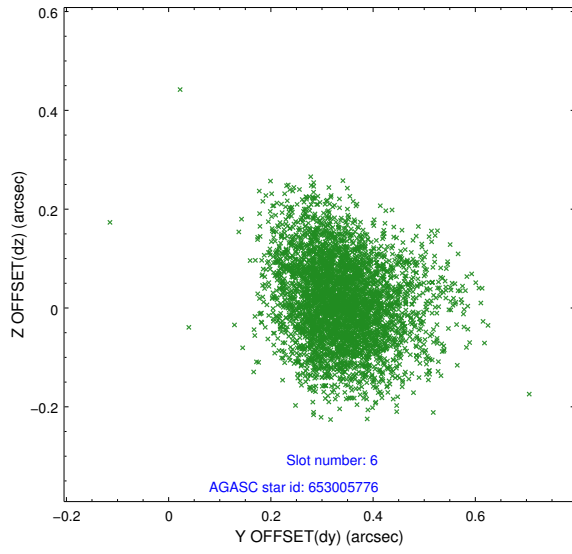
2.4.2 Slot 4



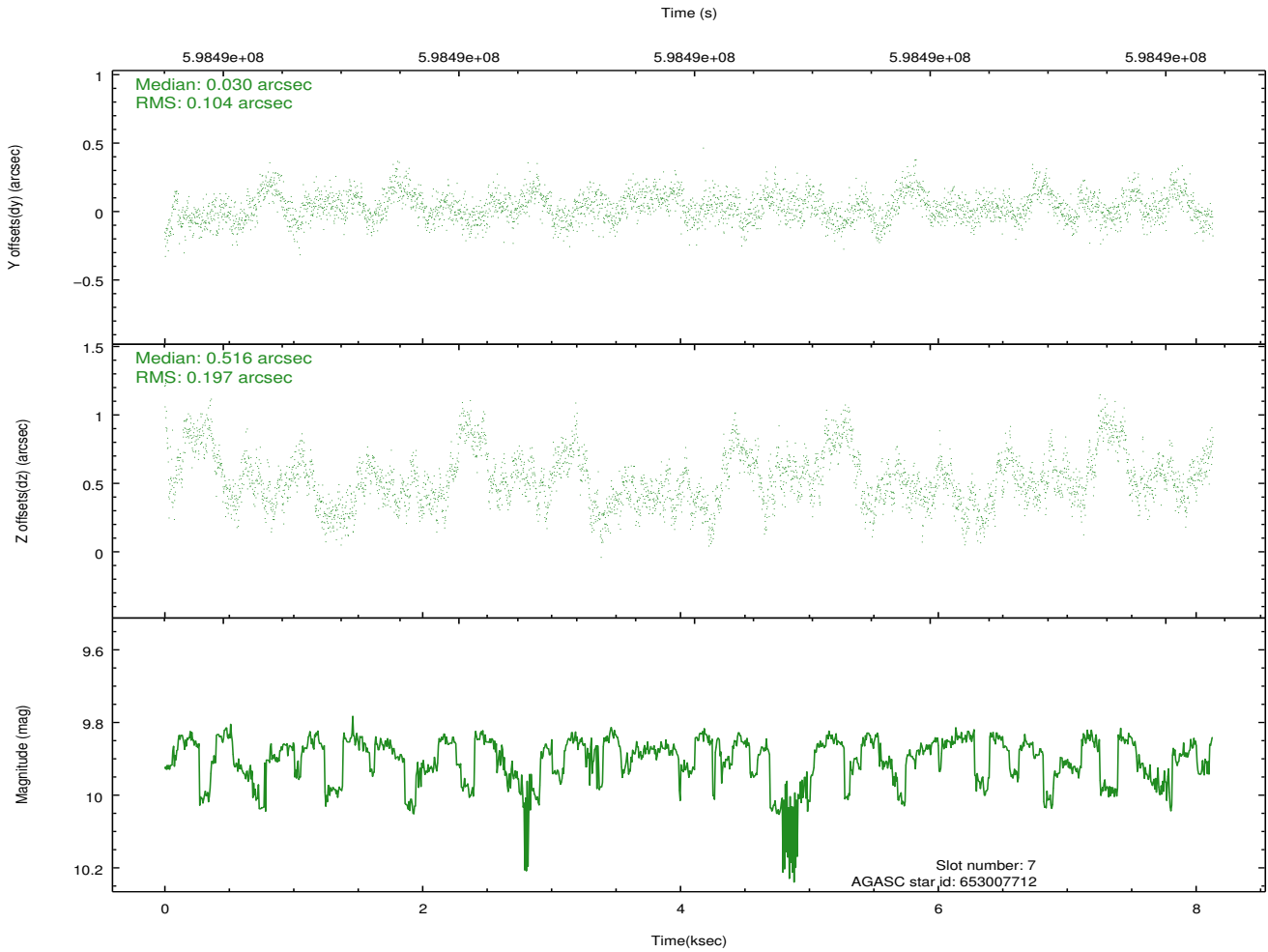
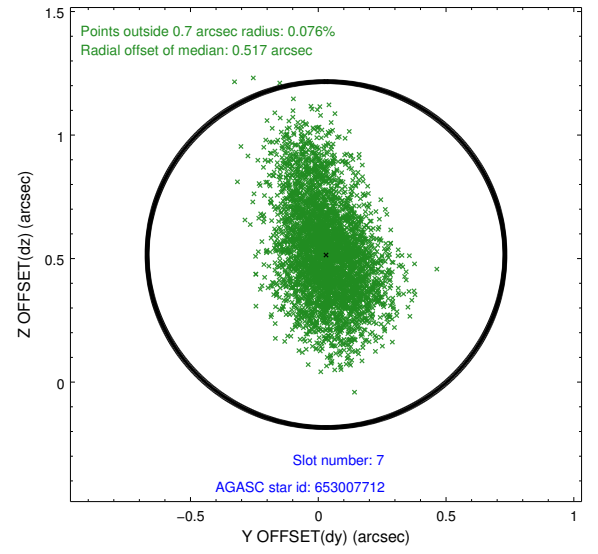
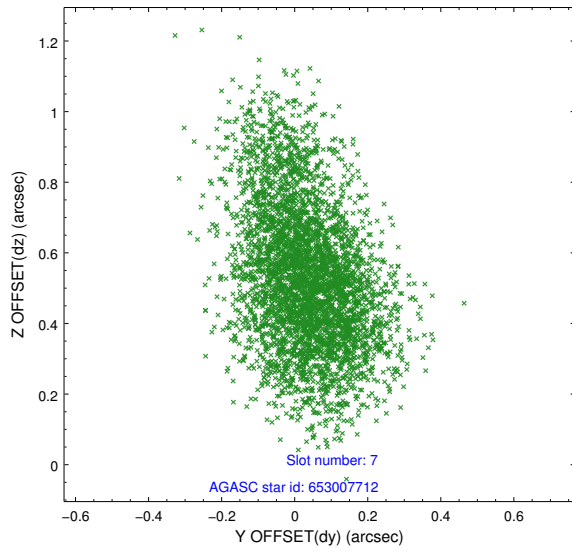
2.4.3 Slot 5



2.4.4 Slot 6

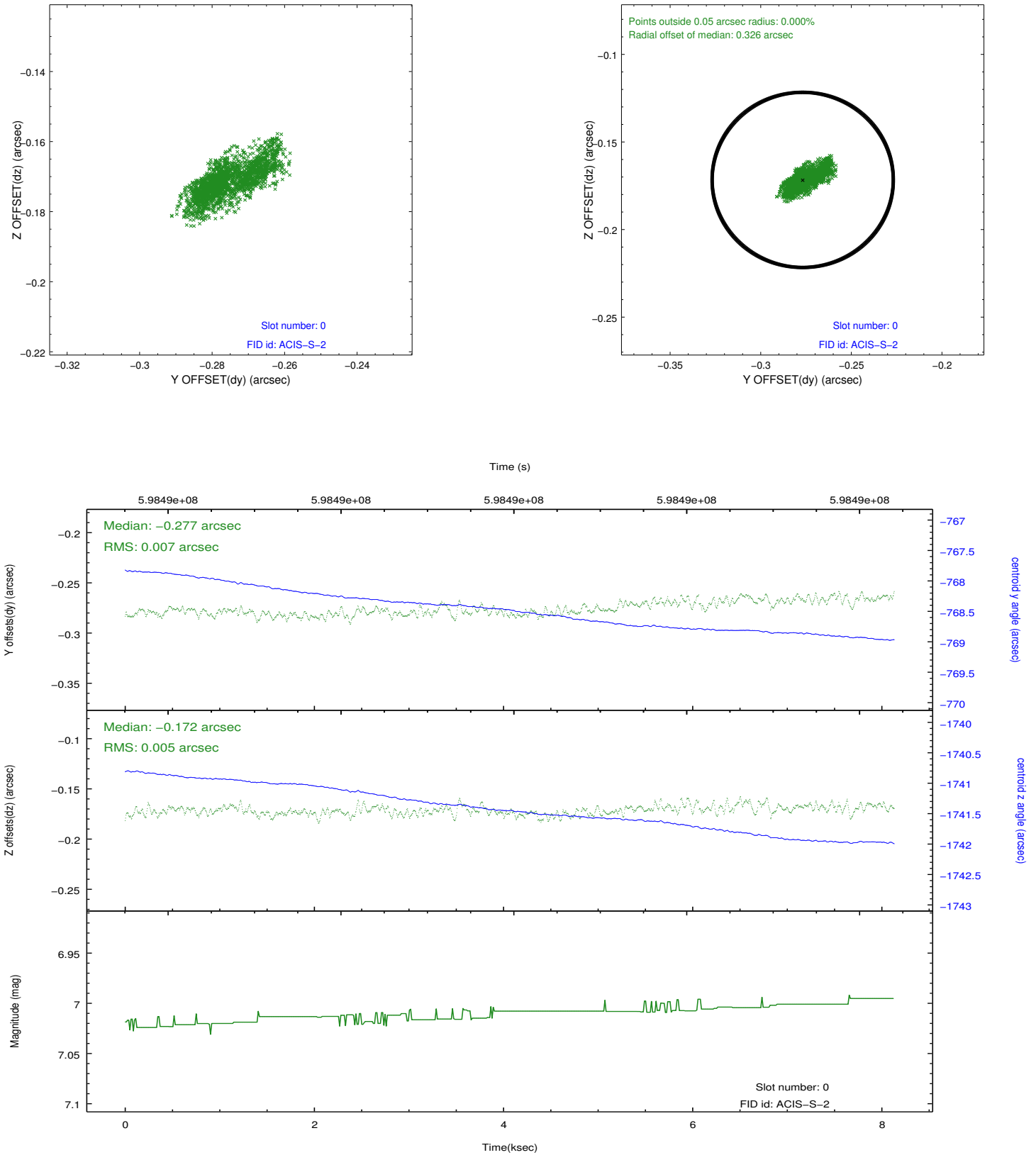


2.4.5 Slot 7

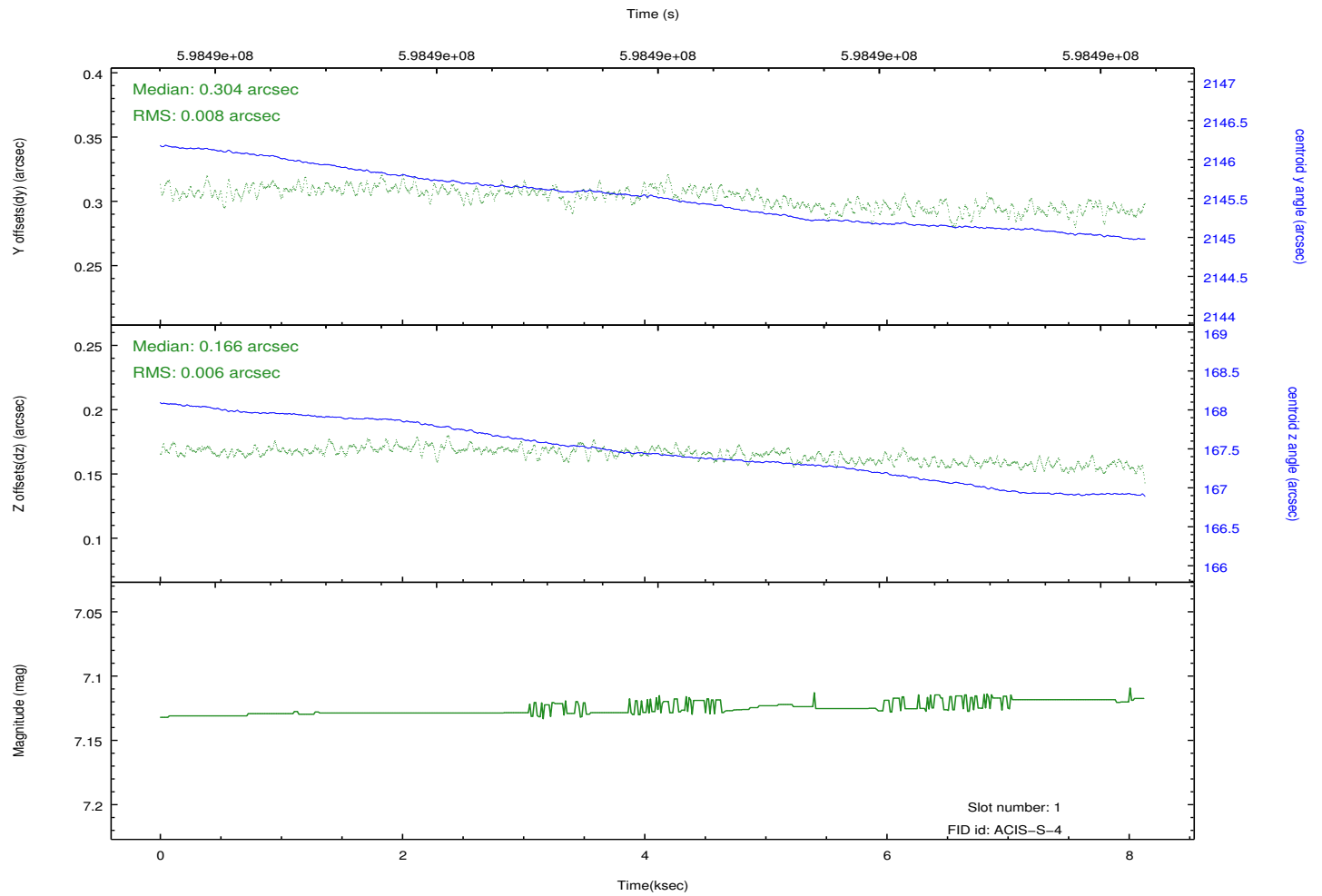
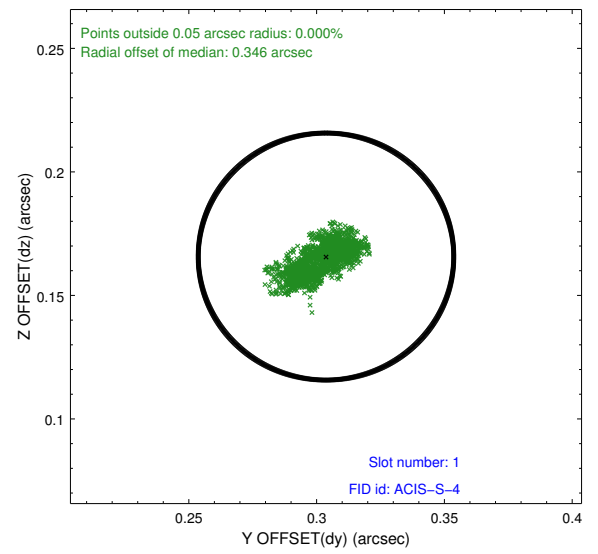
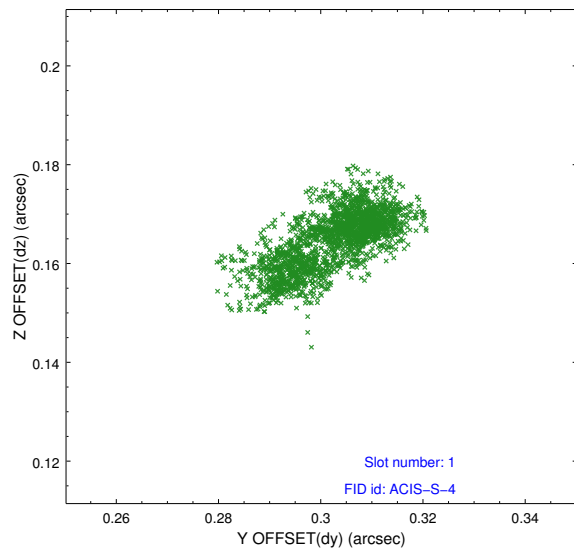


2.5 FID Slots

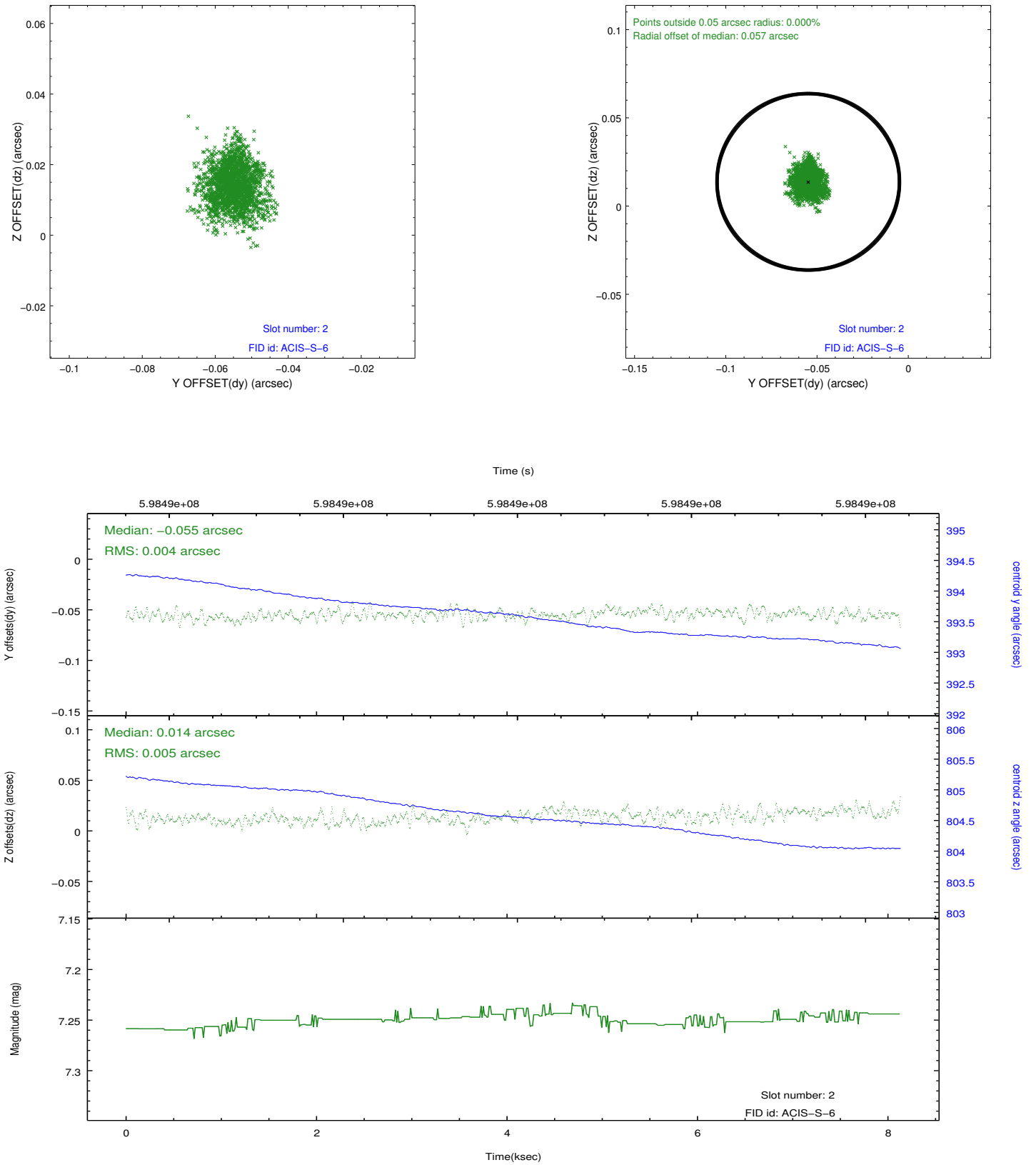
2.5.1 Slot 0



2.5.2 Slot 1



2.5.3 Slot 2



A Summary

A.1 Status

V&V Scientist	Jen Lauer
V&V Date (YYYY-MM-DD)	2016.12.19
V&V Edition	1
V&V Disposition and Status	OK
V&V Charge Time	7.7536001155376

A.2 Comments