

V&V Reference Report

L2 ASCDS Version : 10.5.2

Observation 19311 - L2 Version 1
Chandra X-Ray Center

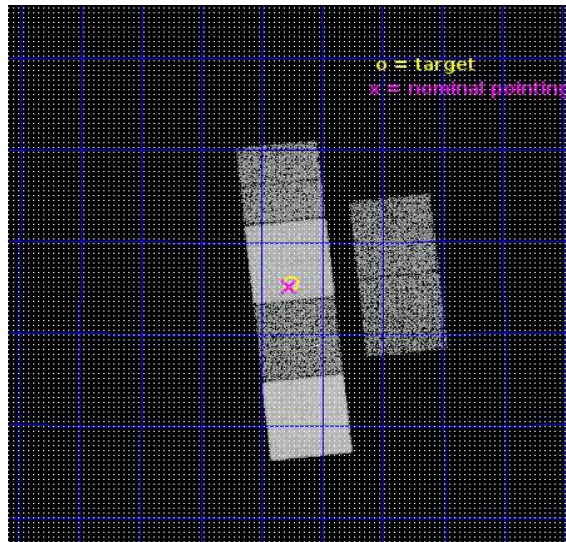
L2 Processing Date : Dec 12 2016

Contents

1	Front	2
2	OBI	3
2.1	OBI	3
2.1.1	Images	3
2.1.2	Bias	3
2.1.3	Parameters	4
2.1.4	Events	4
2.2	Compared Parameters	5
2.3	Aspect	6
2.4	Star Slots	9
2.4.1	Slot 3	9
2.4.2	Slot 4	10
2.4.3	Slot 5	11
2.4.4	Slot 6	12
2.4.5	Slot 7	13
2.5	FID Slots	14
2.5.1	Slot 0	14
2.5.2	Slot 1	15
2.5.3	Slot 2	16
A	Summary	17
A.1	Status	17
A.2	Comments	17

1 Front

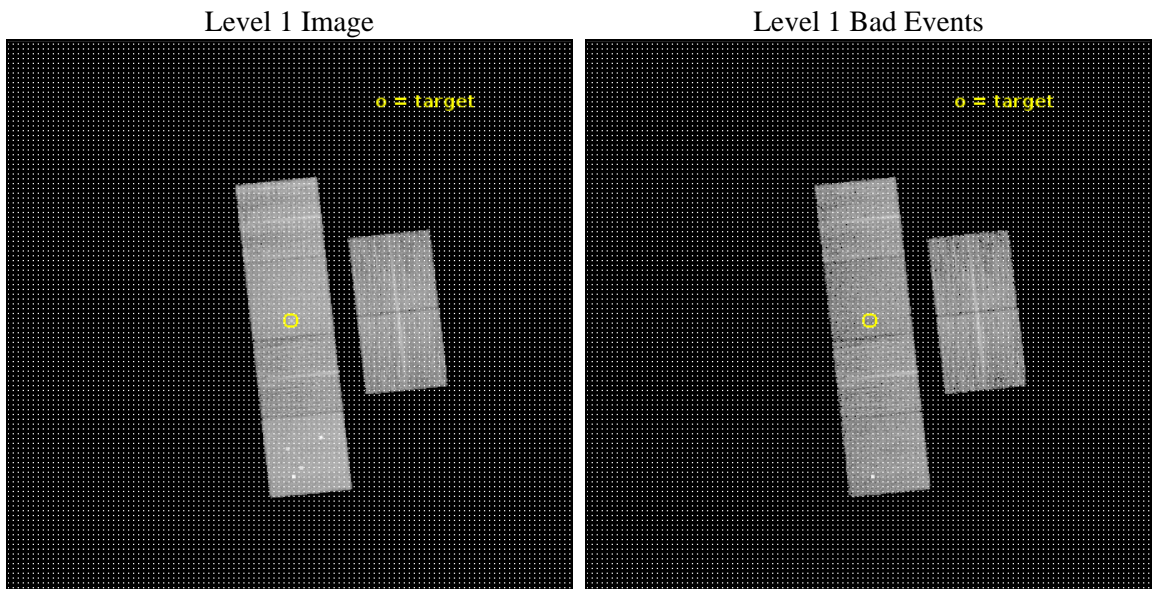
seq_num	601268	Sequence number
obs_id	19311	Observation id
title	A homogeneous view of X-ray halos in massive early-type galaxies	P
observer	Andy Goulding	Principal investigator
object	NGC1060	Source name
dtcycle	0	
cycle	P	events from which exps? Prim/Second/Both
ra_targ	40.8125	Observer's specified target RA [deg]
dec_targ	32.425	Observer's specified target Dec [deg]
ra_nom	40.817706089536	Nominal RA [deg]
dec_nom	32.419328363192	Nominal Dec [deg]
roll_nom	263.80119332864	Nominal Roll [deg]
revision	1	Processing version of data
ontime	9958.4001483917	Sum of GTIs [s]
livetime	9832.3008894841	Livetime [s]
ontime2	9958.4001483917	Sum of GTIs [s]
ontime3	9958.4001483917	Sum of GTIs [s]
ontime5	9958.4001483917	Sum of GTIs [s]
ontime6	9958.4001483917	Sum of GTIs [s]
ontime7	9958.4001483917	Sum of GTIs [s]
ontime8	9958.4001483917	Sum of GTIs [s]
l2events	117316	Number of level 2 events



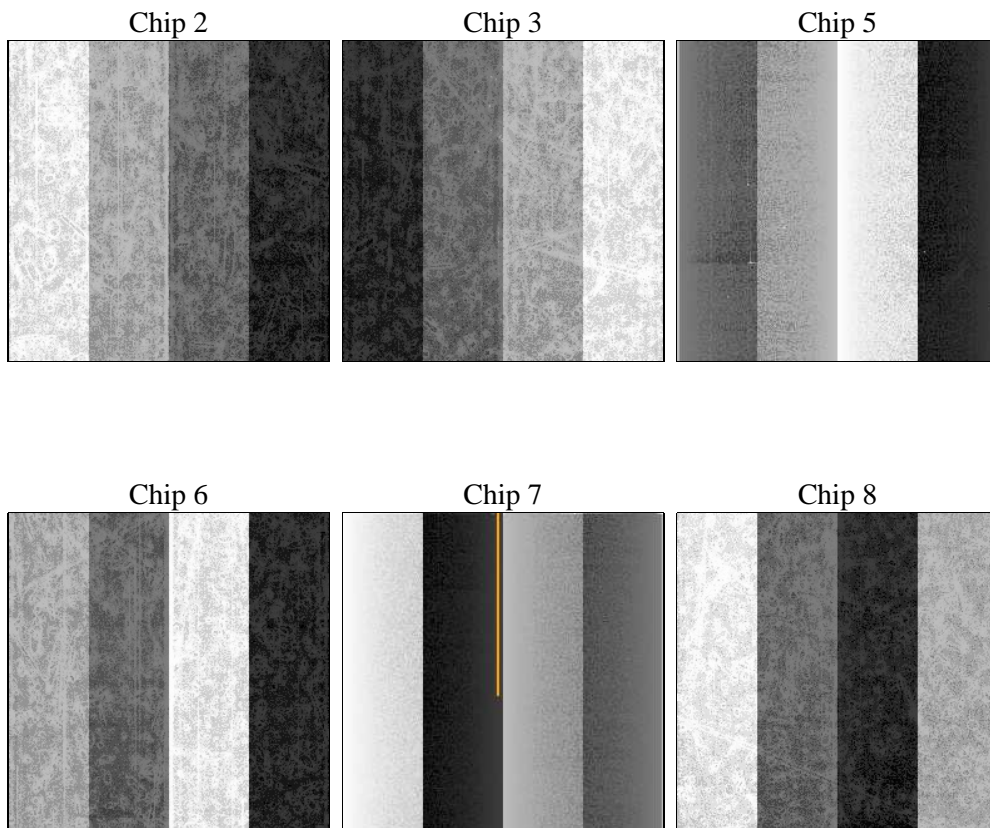
2 OBI

2.1 OBI

2.1.1 Images



2.1.2 Bias



2.1.3 Parameters

obi_num	0	Obi number	sched_exp_time	10000.000000	[s] Scheduled observation exposure time
ascdsver	10.5.2	Processing system revision	ontime	9958.4001483917	Sum of GTIs [s]
caldsver	4.7.2	 	ontime2	9958.4001483917	Sum of GTIs [s]
date	2016-12-12T17:13:37	Date and time of file creation	ontime3	9958.4001483917	Sum of GTIs [s]
revision	1	Processing version of data	ontime5	9958.4001483917	Sum of GTIs [s]
			ontime6	9958.4001483917	Sum of GTIs [s]
			ontime7	9958.4001483917	Sum of GTIs [s]
			ontime8	9958.4001483917	Sum of GTIs [s]
			l1events	493222	Number of level 1 events

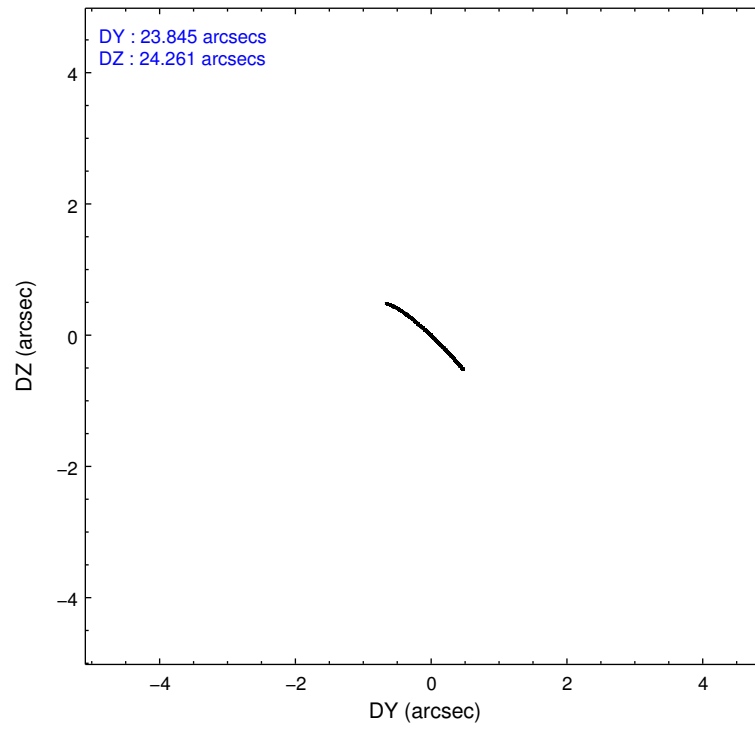
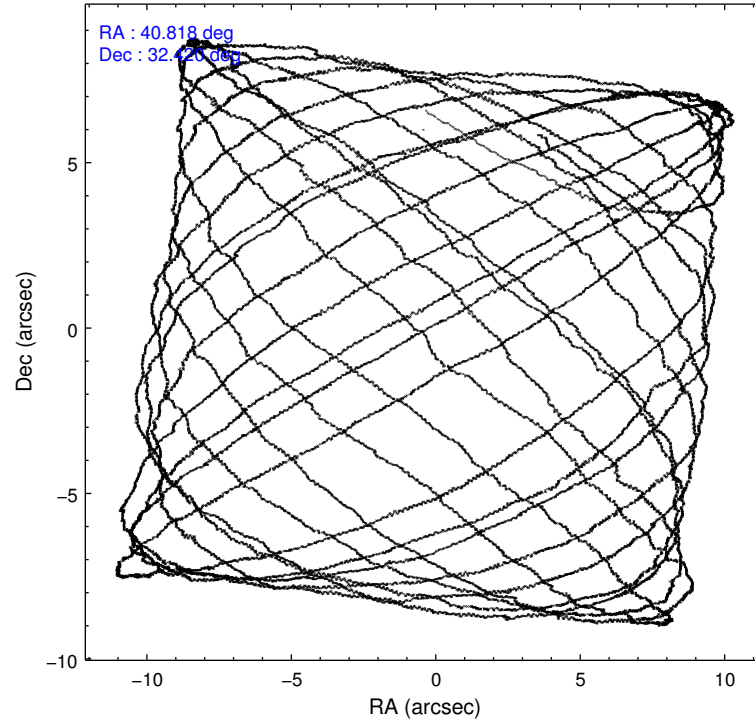
2.1.4 Events

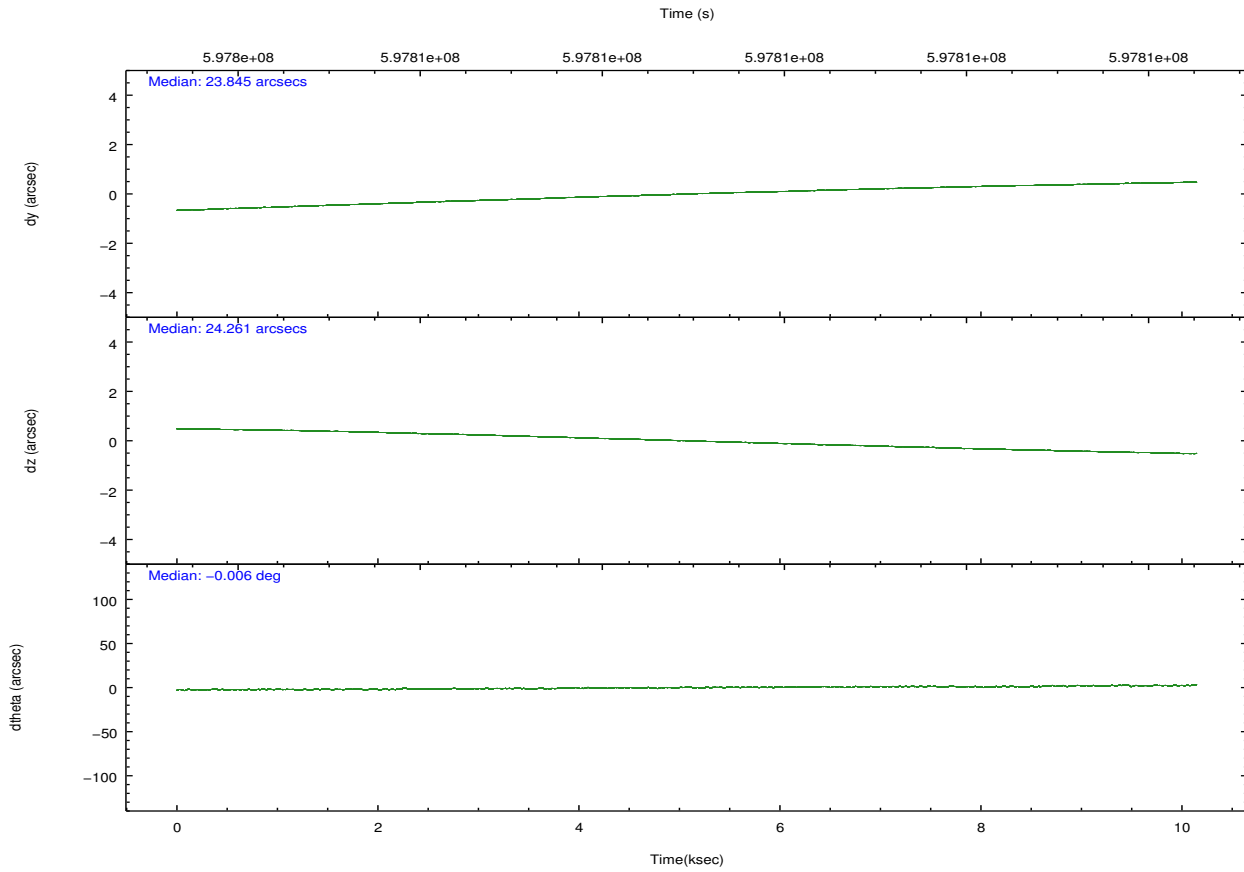
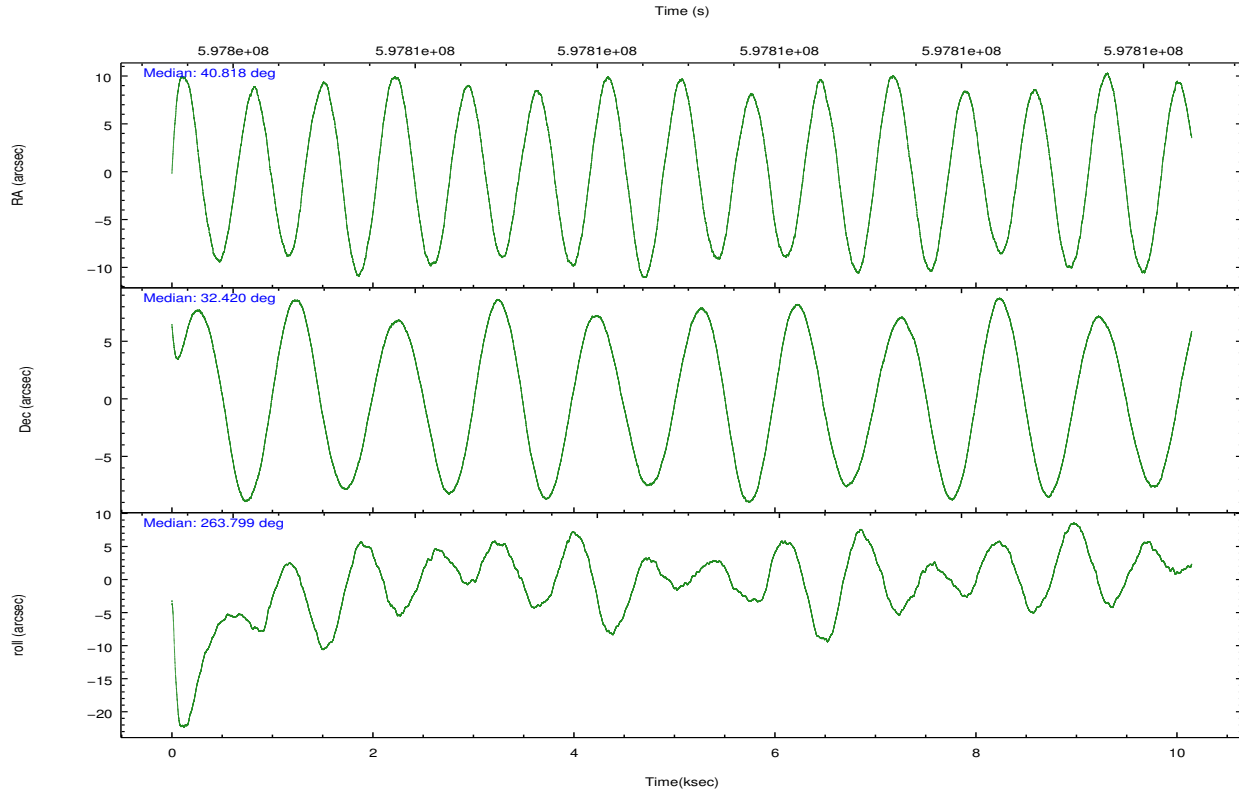
	ccd 2	ccd 3	ccd 5	ccd 6	ccd 7	ccd 8		ccd 2	ccd 3	ccd 5	ccd 6	ccd 7	ccd 8
level 1 events	66225	64078	114752	67656	90184	90327	grade 0 events	2623	2464	7695	2838	3926	7212
rejected events	58862	57108	57764	59694	49355	65184		3%	3%	6%	4%	4%	7%
rejected %	88%	89%	50%	88%	54%	72%	grade 1 events	43	31	203	32	142	71
								0%	0%	0%	0%	0%	0%
							grade 2 events	1814	1555	17362	1854	8890	6068
								2%	2%	15%	2%	9%	6%
							grade 3 events	714	784	1789	771	3280	2611
								1%	1%	1%	1%	3%	2%
							grade 4 events	732	756	1653	756	3353	2475
								1%	1%	1%	1%	3%	2%
							grade 5 events	2795	3280	7987	3337	8743	4834
								4%	5%	6%	4%	9%	5%
							grade 6 events	1482	1415	28511	1744	21389	6792
								2%	2%	24%	2%	23%	7%
							grade 7 events	56022	53793	49552	56324	40461	60264
								84%	83%	43%	83%	44%	66%

2.2 Compared Parameters

Parameter	Planned	Actual	Parameter	Planned	Actual
Instrument	ACIS	ACIS	Obspar format version number	7	7
Detector	ACIS-235678	ACIS-235678	Obspar file type	PREDICTED	ACTUAL
Grating	NONE	NONE	Obspar update status	NONE	UPDATED
Data mode	VFAINT	VFAINT	CCD I0 on	N	N
Observation mode	POINTING	POINTING	CCD I1 on	N	N
[deg] Pointing RA	40.804117	40.81770608953582	CCD I2 on	O1	Y
[deg] Pointing Dec	32.444278	32.41932836319238	CCD I3 on	O2	Y
[deg] Pointing Roll	263.651832	263.8011933286368	CCD S0 on	N	N
[mm] SIM focus pos	-0.684267	-0.6828225247311905	CCD S1 on	Y	Y
[mm] SIM defocus	0	0.001444936568705701	CCD S2 on	Y	Y
[mm] SIM translation stage pos	-190.132523	-190.1425803651734	CCD S3 on	Y	Y
[mm] SIM translation stage offset	0	0.01005778216563158	CCD S4 on	Y	Y
[s] Observation start time (MET)	597803996.184000	597802887.44603	CCD S5 on	N	N
Observation start date	2016-12-11T00:38:48	2016-12-11T00:21:27	Number of optional ACIS chips dropped	0	0
[s] Observation end time (MET)	597813996.184000	597814827.15922	On-chip summing requested	N	N
Observation end date	2016-12-11T03:25:28	2016-12-11T03:40:27	Subarray requested	NONE	NONE
Read mode	TIMED	TIMED	Alternating exposures requested	N	N
			[s] Primary exposure time	0.000000	3.2

2.3 Aspect



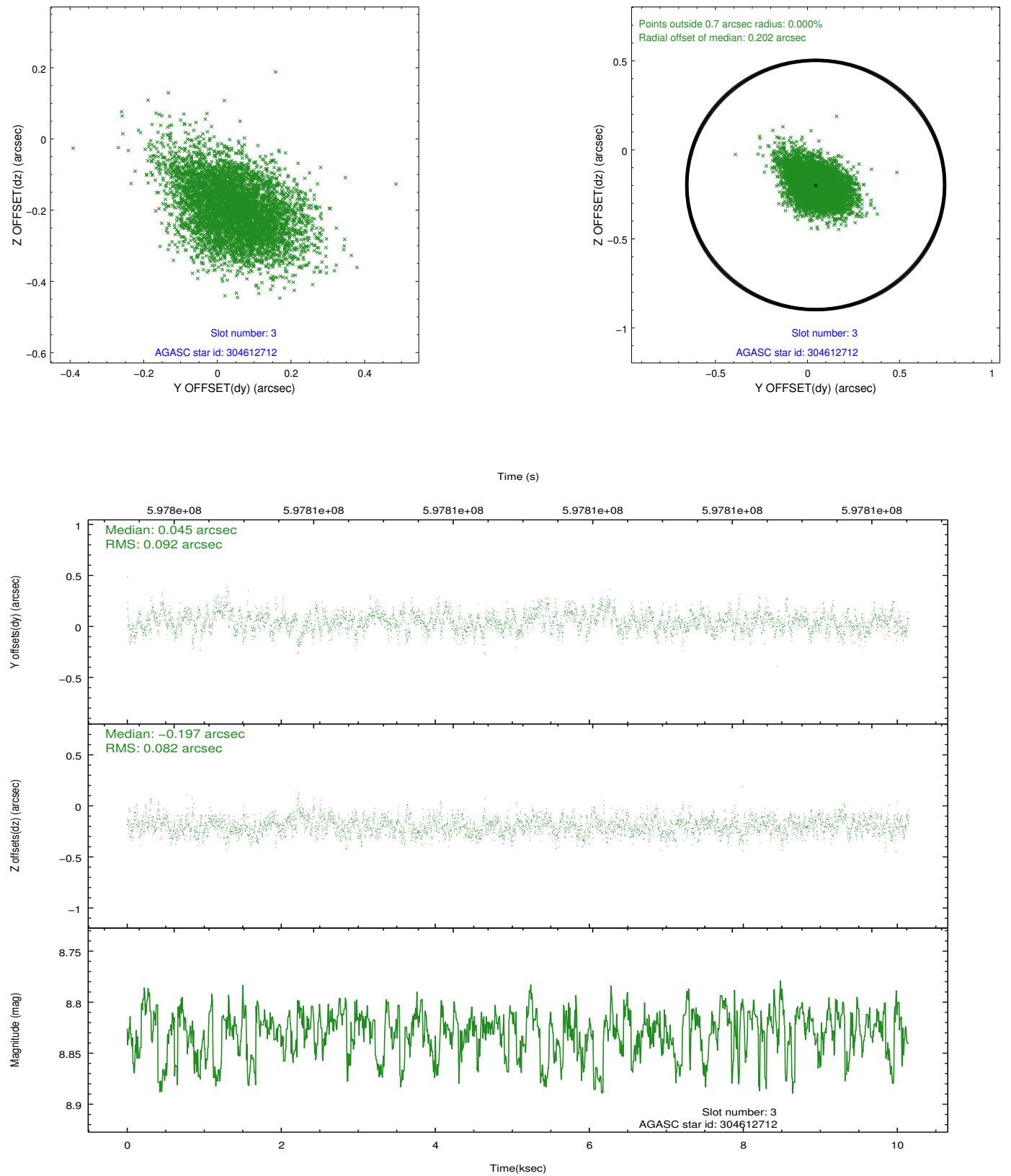


Slot Statistics

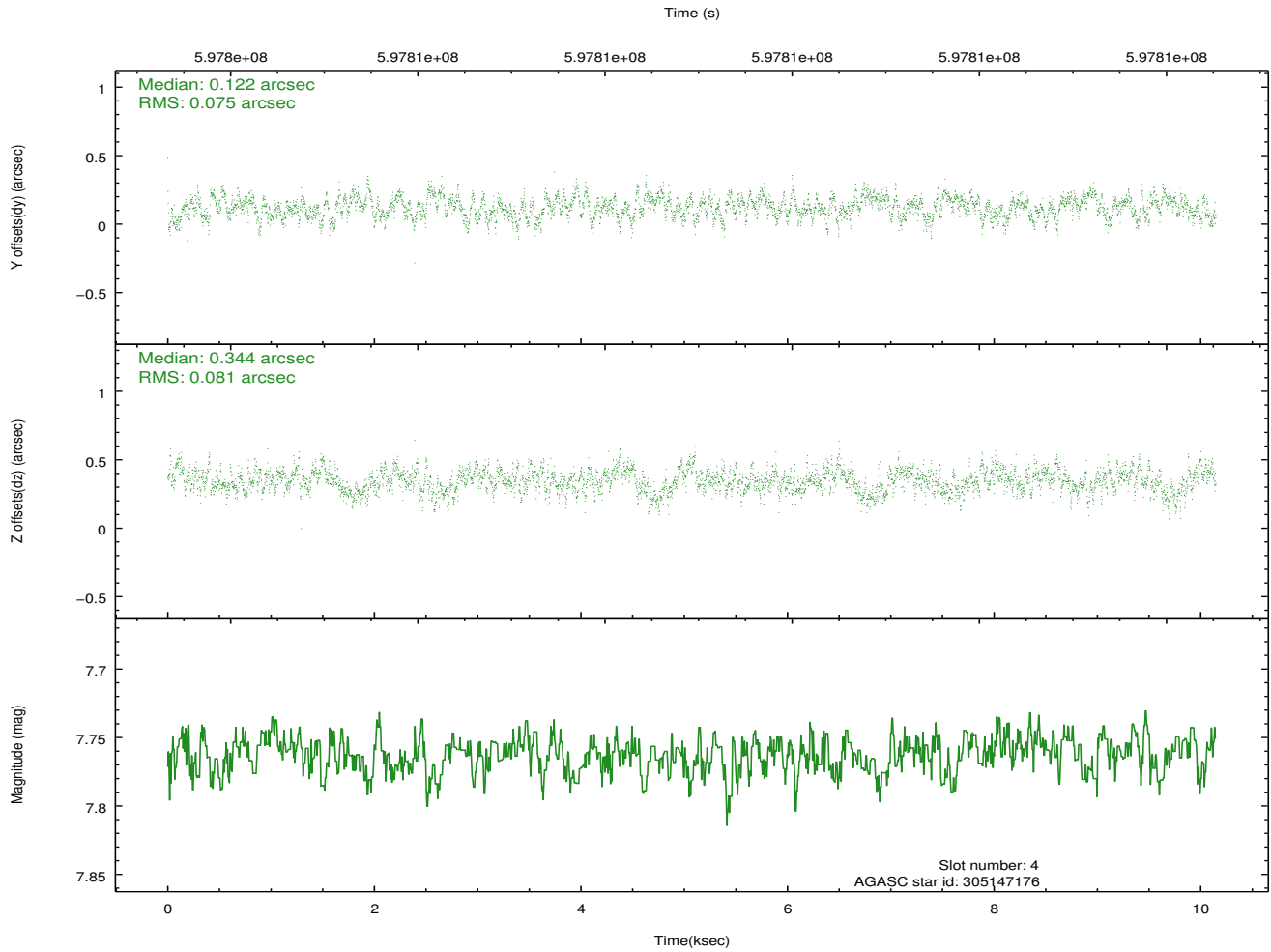
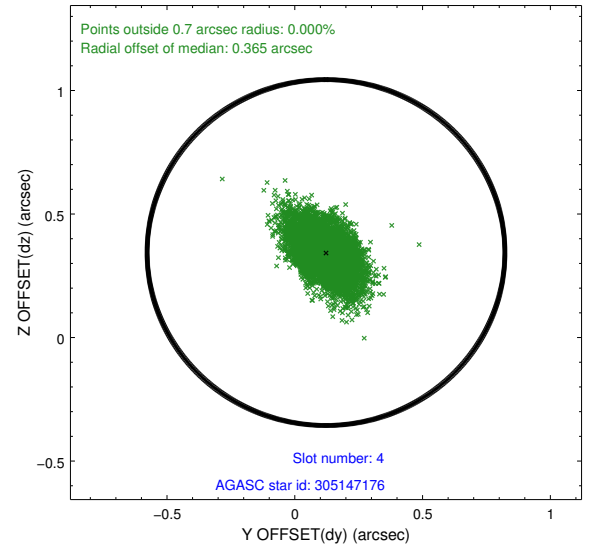
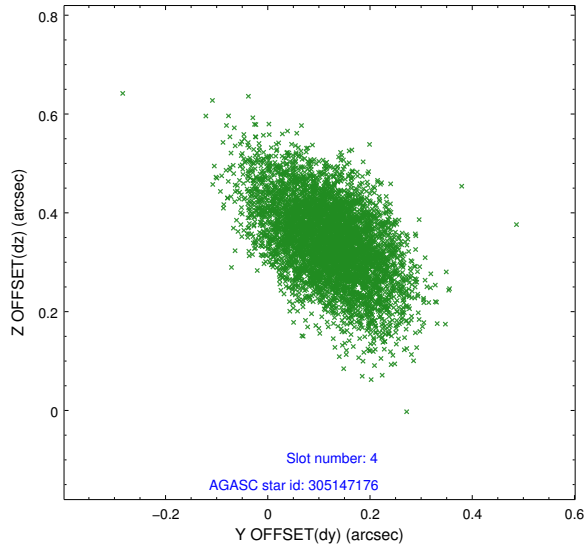
slot	status	used	id	mag	n_pts	med_dy	med_dz	dr1	dr2	ra	dec	mean_y	mean_z
0	FID		ACIS-S-2	6.97	2473	-0.264	-0.091	0.023	0.039	0.000000	0.000000	-777.23	-1745.95
1	FID		ACIS-S-4	7.06	2475	0.561	0.152	0.016	0.027	0.000000	0.000000	2136.57	162.32
2	FID		ACIS-S-5	7.09	2476	-0.325	-0.052	0.015	0.024	0.000000	0.000000	-1829.52	156.26
3	GUIDE	used	304612712	8.83	4946	0.045	-0.197	0.127	0.216	40.204549	31.855512	2305.22	-1588.06
4	GUIDE	used	305147176	7.76	4948	0.122	0.344	0.115	0.196	40.109077	32.320442	671.39	-2052.82
5	GUIDE	used	305277504	9.27	4945	-0.087	-0.178	0.125	0.201	40.990540	33.060769	-2267.65	313.54
6	GUIDE	used	305278880	7.21	4950	0.109	-0.190	0.112	0.193	41.005714	32.370308	196.60	638.59
7	GUIDE	used	305275512	7.72	4950	-0.193	0.221	0.104	0.168	40.696155	32.869449	-1484.49	-493.09

2.4 Star Slots

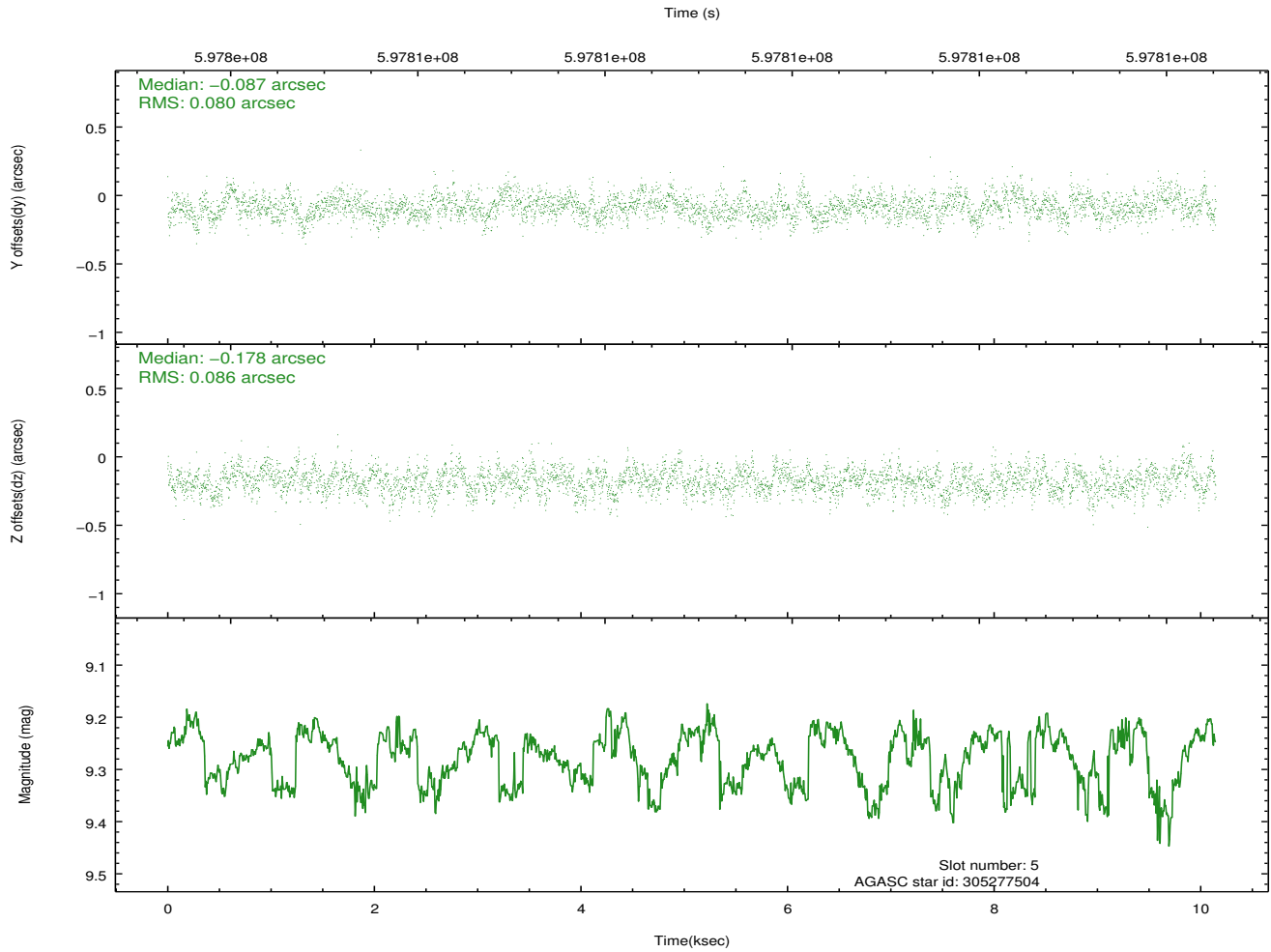
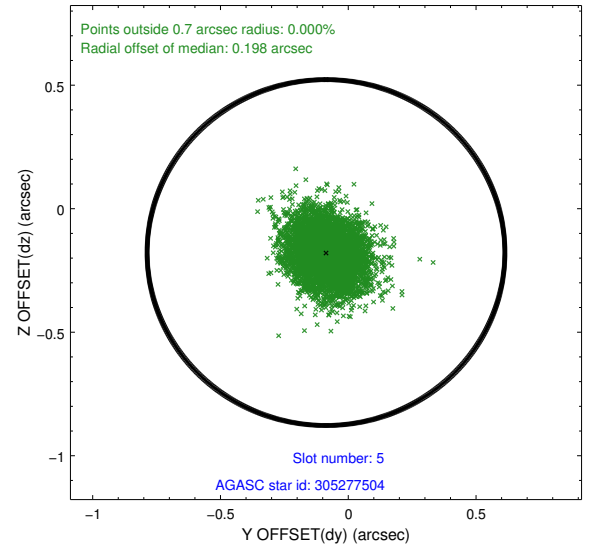
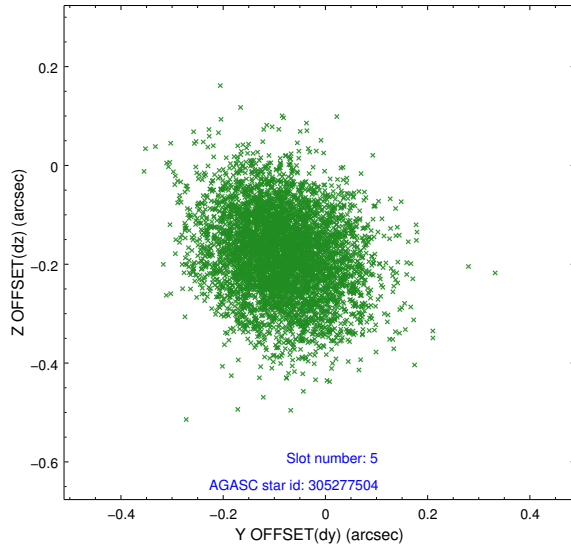
2.4.1 Slot 3



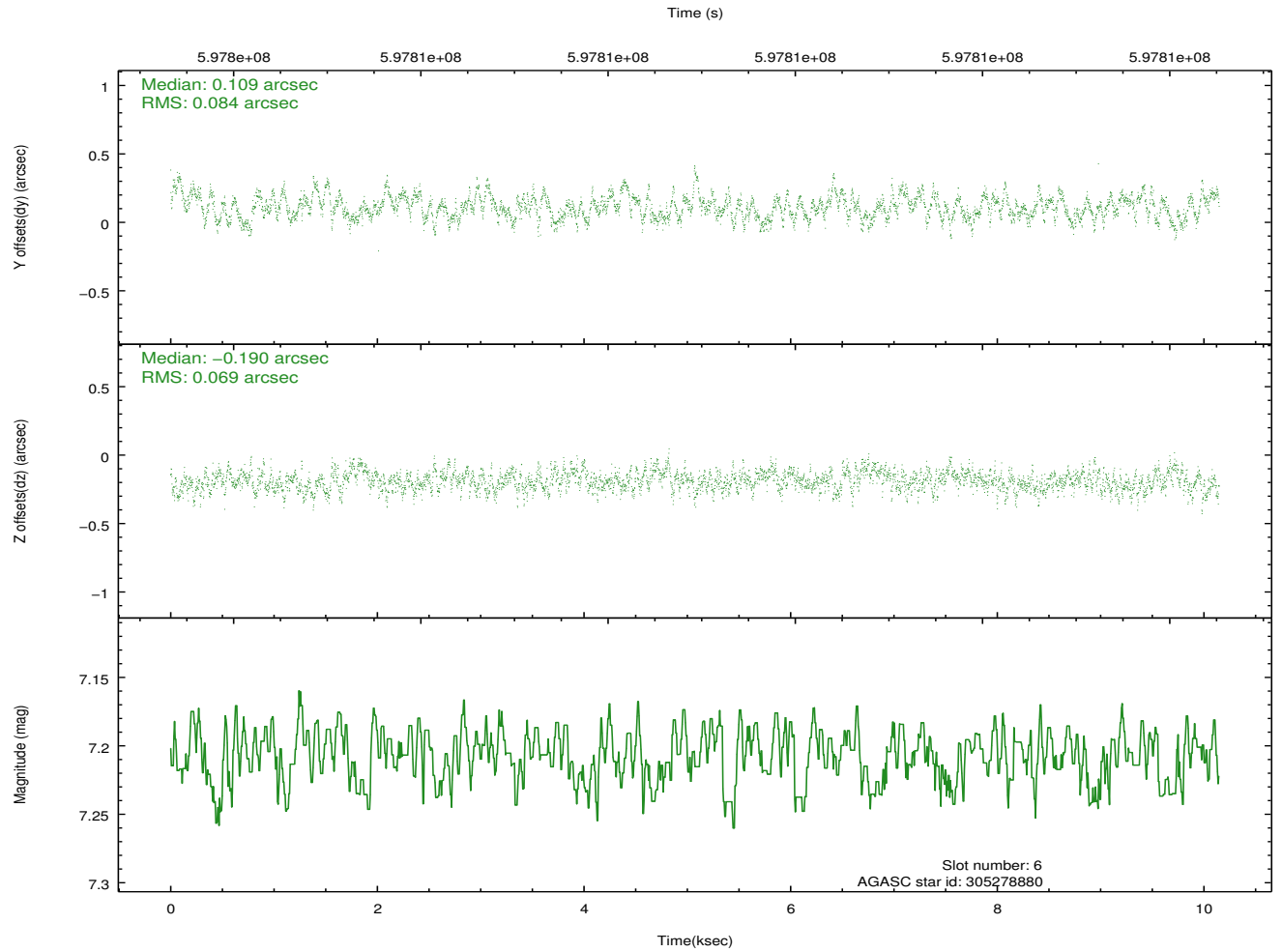
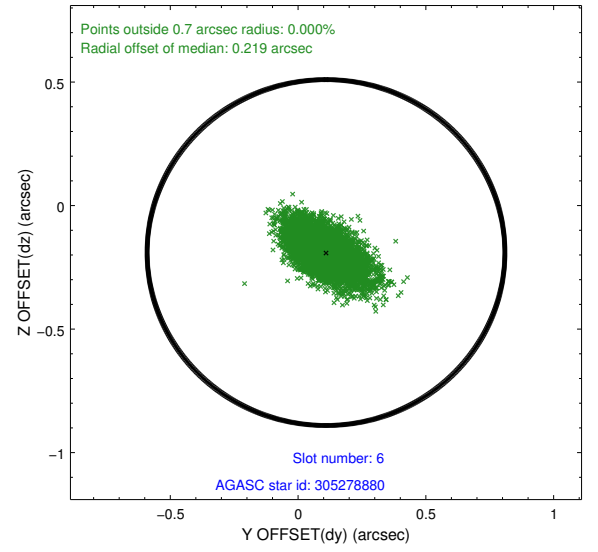
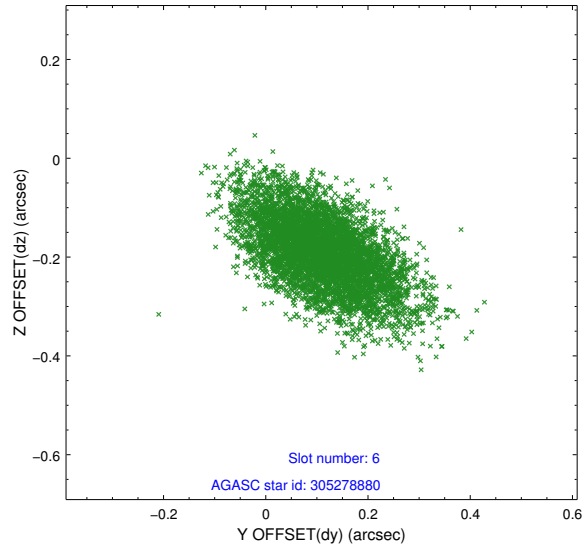
2.4.2 Slot 4



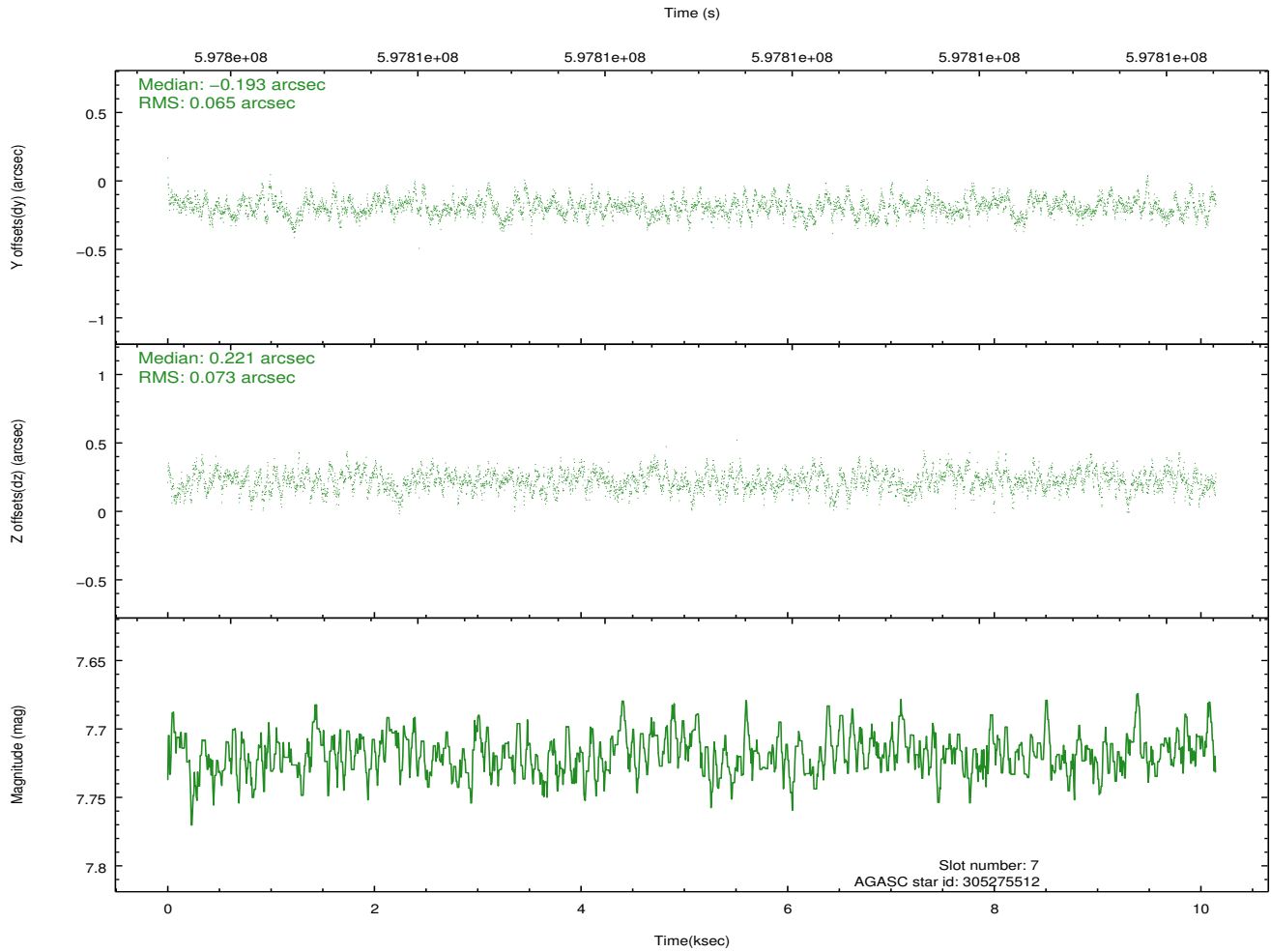
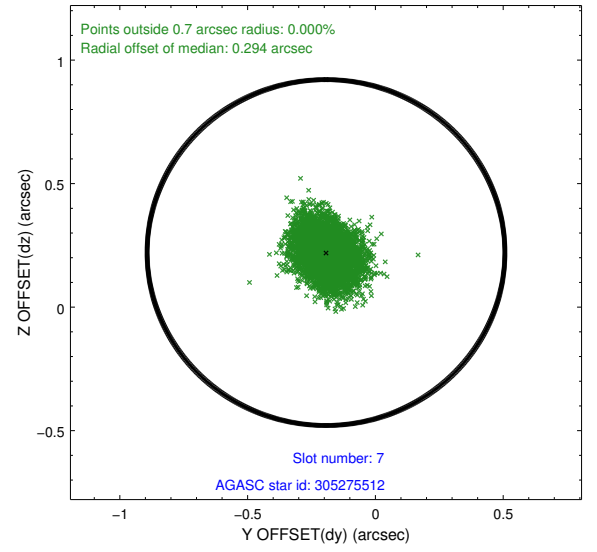
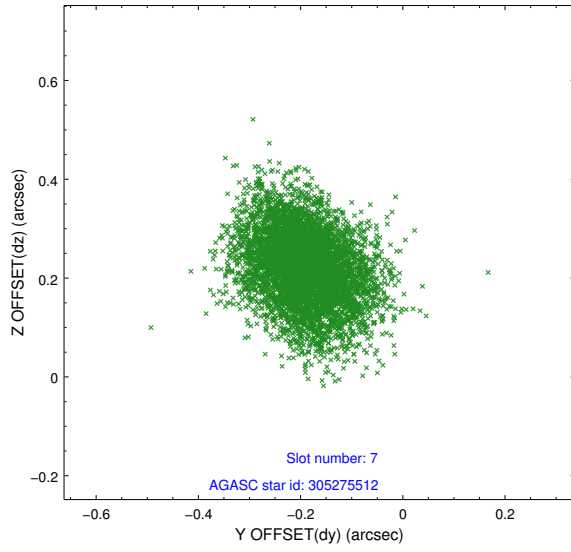
2.4.3 Slot 5



2.4.4 Slot 6

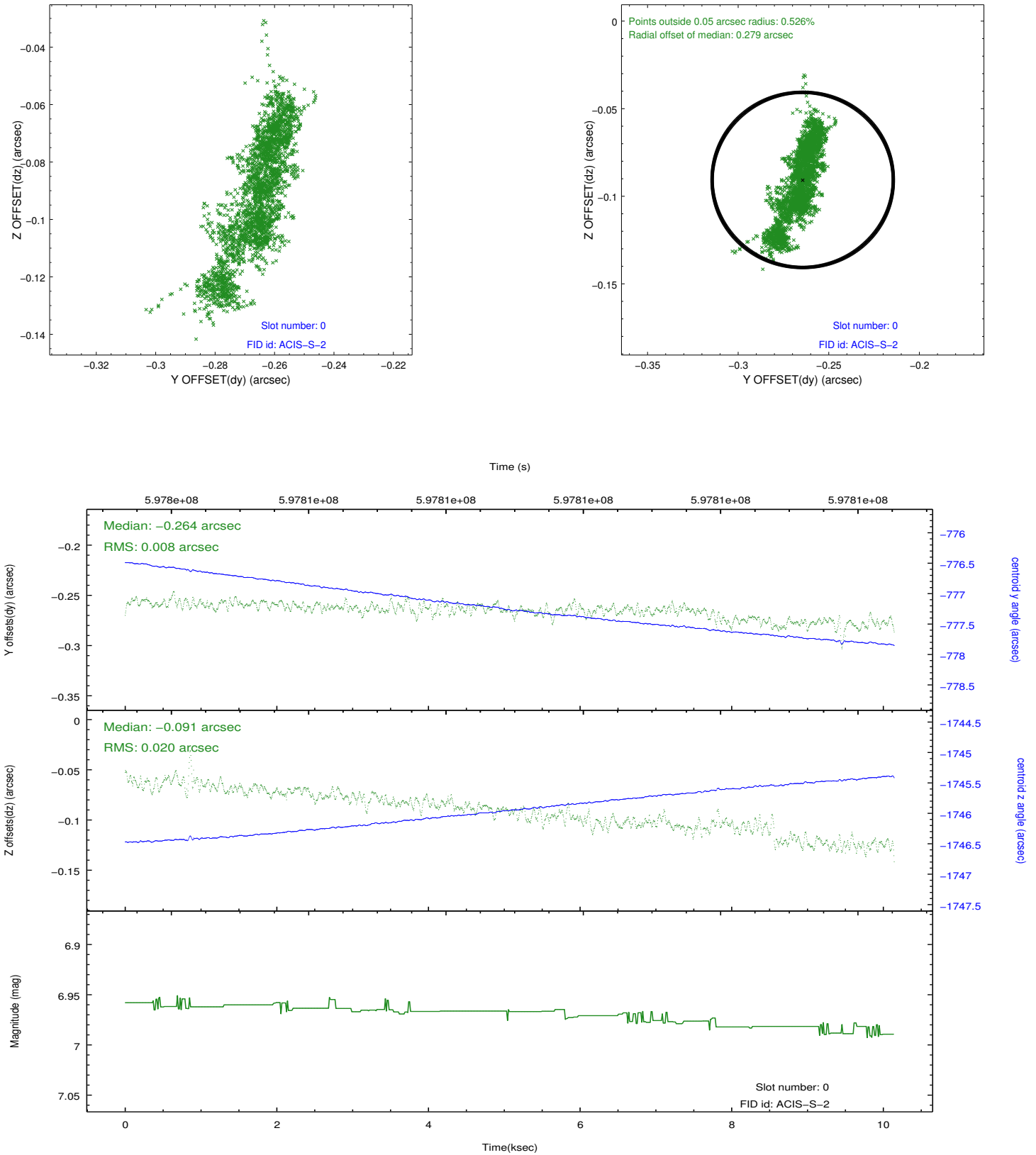


2.4.5 Slot 7

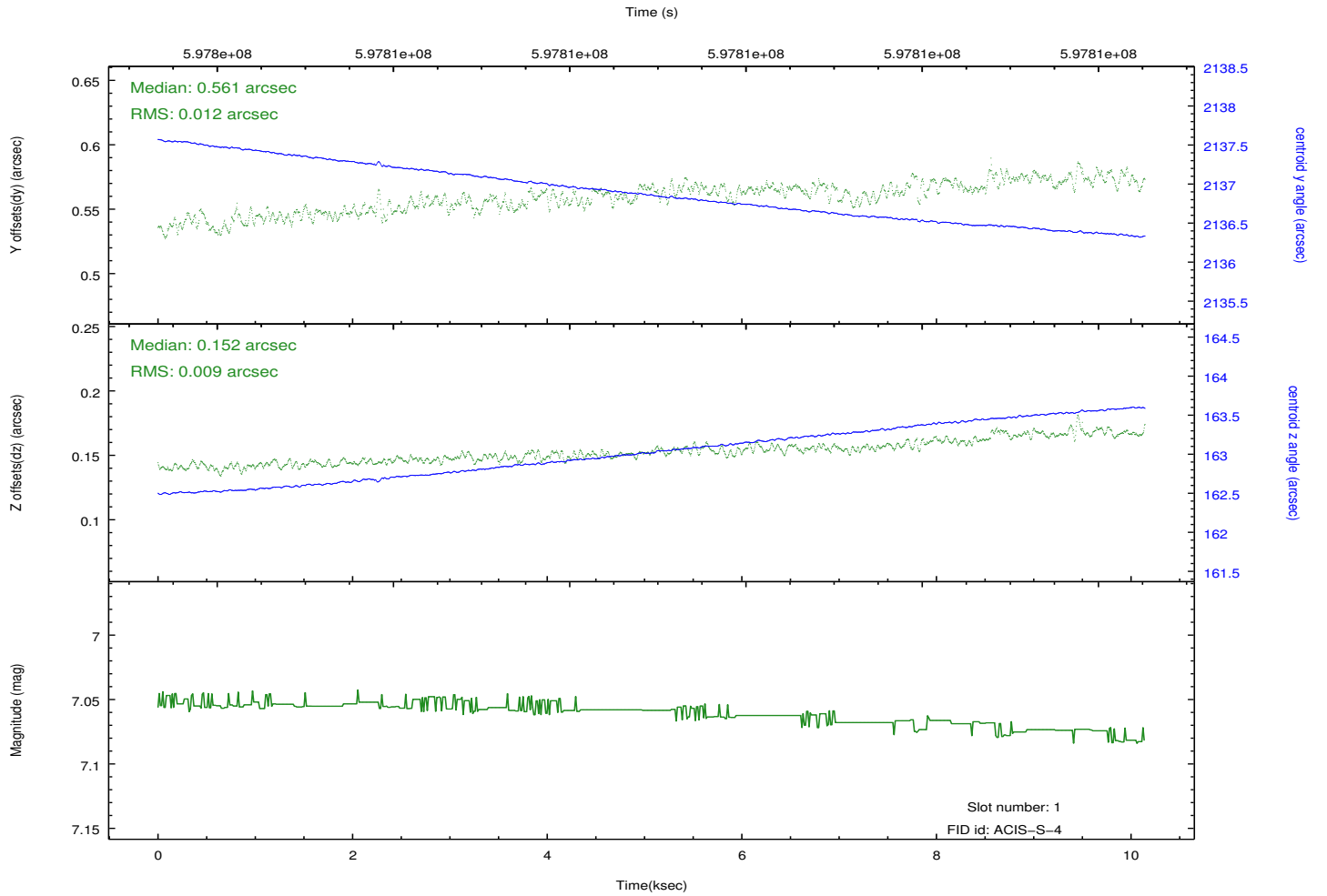
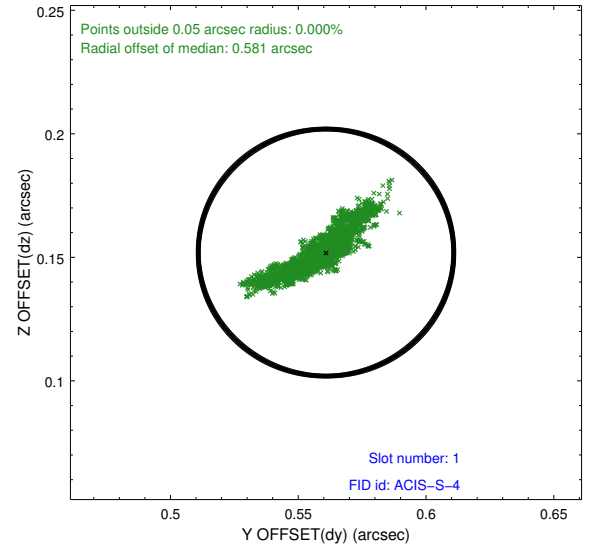
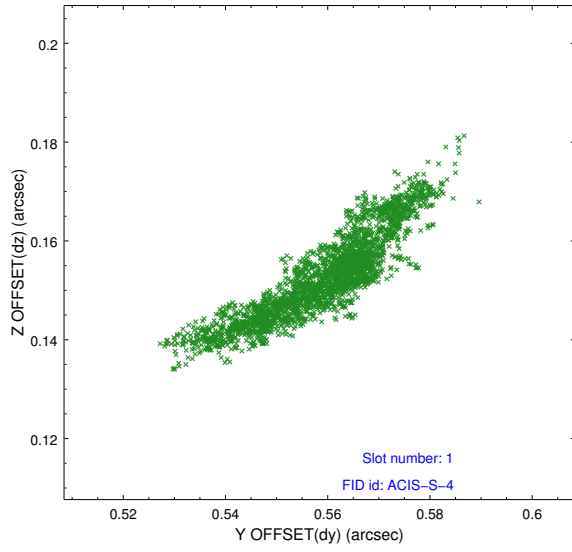


2.5 FID Slots

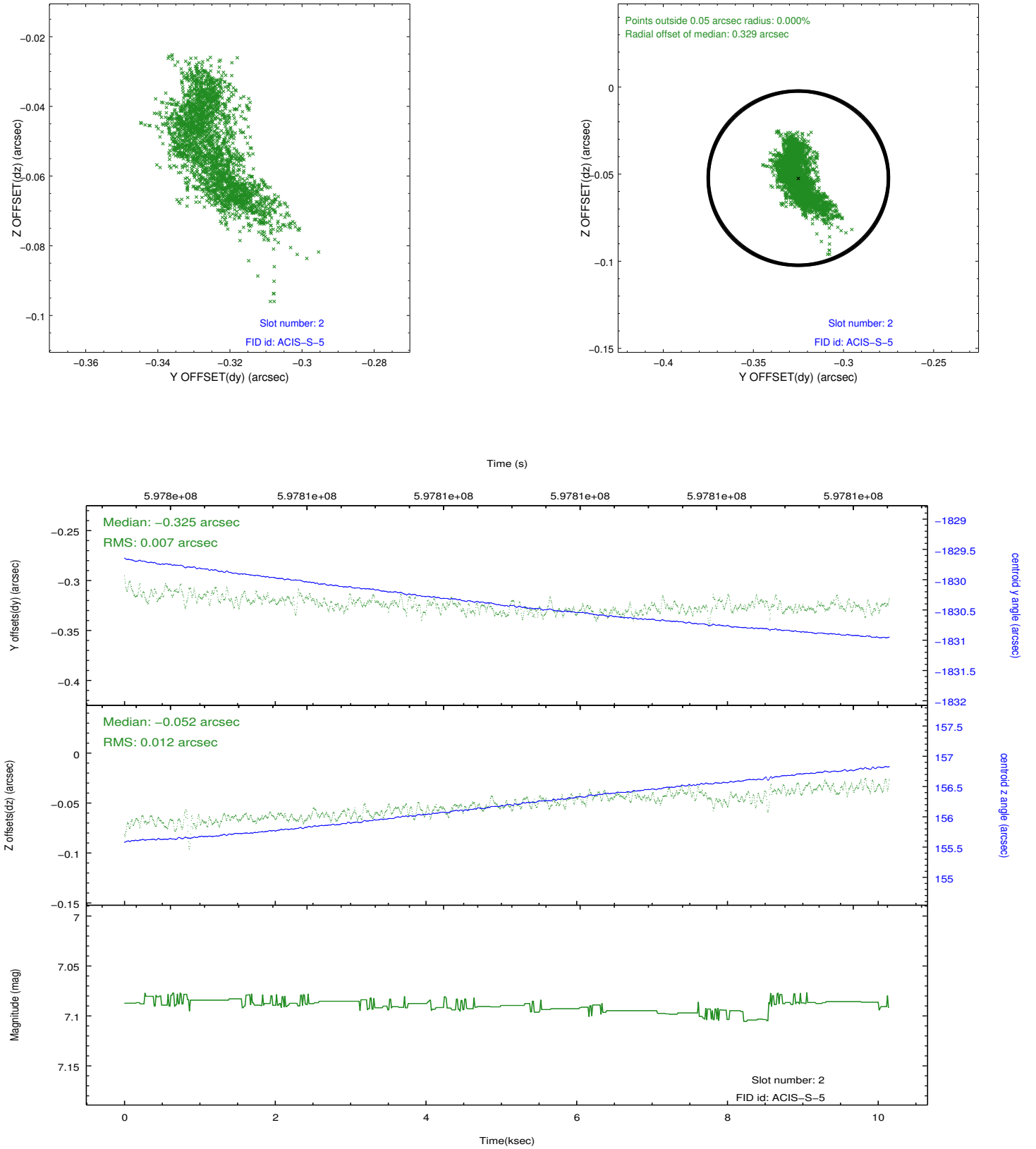
2.5.1 Slot 0



2.5.2 Slot 1



2.5.3 Slot 2



A Summary

A.1 Status

V&V Scientist	Joy Nichols
V&V Date (YYYY-MM-DD)	2016.12.13
V&V Edition	1
V&V Disposition and Status	OK
V&V Charge Time	9.9584001483917

A.2 Comments