

# V&V Reference Report

## L2 ASCDS Version : 10.6

Observation 18338 - L2 Version 1  
Chandra X-Ray Center

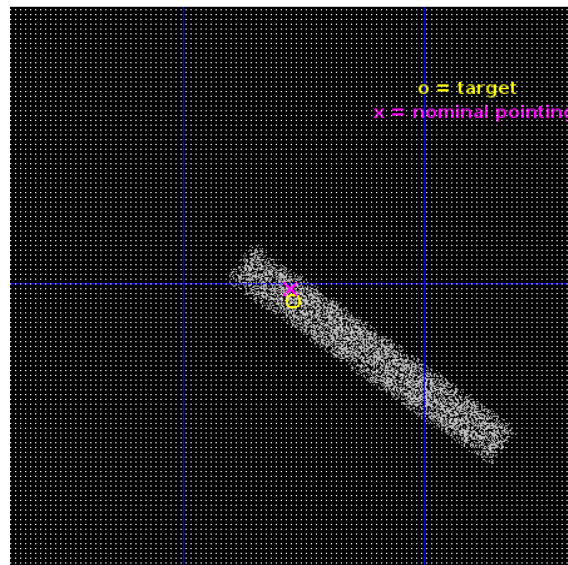
L2 Processing Date : Nov 20 2017

## Contents

<b>1</b>	<b>Front</b>	<b>2</b>
<b>2</b>	<b>OBI</b>	<b>3</b>
2.1	OBI . . . . .	3
2.1.1	Images . . . . .	3
2.1.2	Bias . . . . .	3
2.1.3	Parameters . . . . .	4
2.1.4	Events . . . . .	4
2.2	Compared Parameters . . . . .	5
2.3	Aspect . . . . .	6
2.4	Star Slots . . . . .	9
2.4.1	Slot 3 . . . . .	9
2.4.2	Slot 4 . . . . .	10
2.4.3	Slot 5 . . . . .	11
2.4.4	Slot 6 . . . . .	12
2.4.5	Slot 7 . . . . .	13
2.5	FID Slots . . . . .	14
2.5.1	Slot 0 . . . . .	14
2.5.2	Slot 1 . . . . .	15
2.5.3	Slot 2 . . . . .	16
<b>A</b>	<b>Summary</b>	<b>17</b>
A.1	Status . . . . .	17
A.2	Comments . . . . .	17

# 1 Front

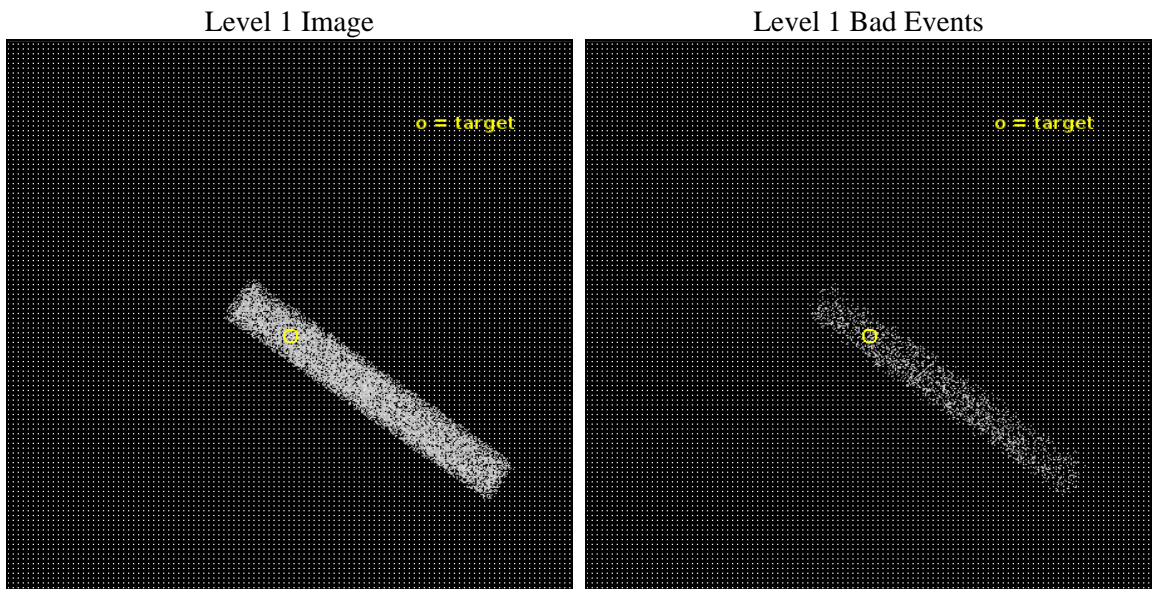
seq_num	401807	Sequence number
obs_id	18338	Observation id
title	Crust cooling of accretion-heated neutron stars	Proposal title
observer	Rudy Wijnands	Principal investigator
object	MAXI J0556-332	Source name
dtcycle	0	&#160
cycle	P	events from which exps? Prim/Second/Both
ra_targ	89.193	Observer's specified target RA [deg]
dec_targ	-33.1745	Observer's specified target Dec [deg]
ra_nom	89.193737168914	Nominal RA [deg]
dec_nom	-33.169071765717	Nominal Dec [deg]
roll_nom	36.157038204824	Nominal Roll [deg]
revision	1	Processing version of data
ontime	11069.076414824	Sum of GTIs [s]
livetime	10039.068034485	Livetime [s]
ontime7	11069.076414824	Sum of GTIs [s]
l2events	6597	Number of level 2 events



## 2 OBI

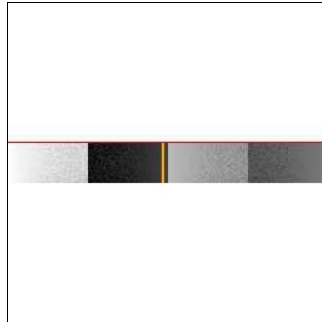
### 2.1 OBI

#### 2.1.1 Images



#### 2.1.2 Bias

Chip 7



### 2.1.3 Parameters

obi_num	0	Obi number	sched_exp_time	11000.000000	[s] Scheduled observation exposure time
ascdsver	10.6	Processing system revision	ontime	11069.076414824	Sum of GTIs [s]
caldsver	4.7.6	&#160	ontime7	11069.076414824	Sum of GTIs [s]
date	2017-11-20T04:38:08	Date and time of file creation	l1events	14159	Number of level 1 events
revision	1	Processing version of data			

### 2.1.4 Events

	<b>ccd 7</b>
level 1 events	14159
rejected events	7228
rejected %	51%

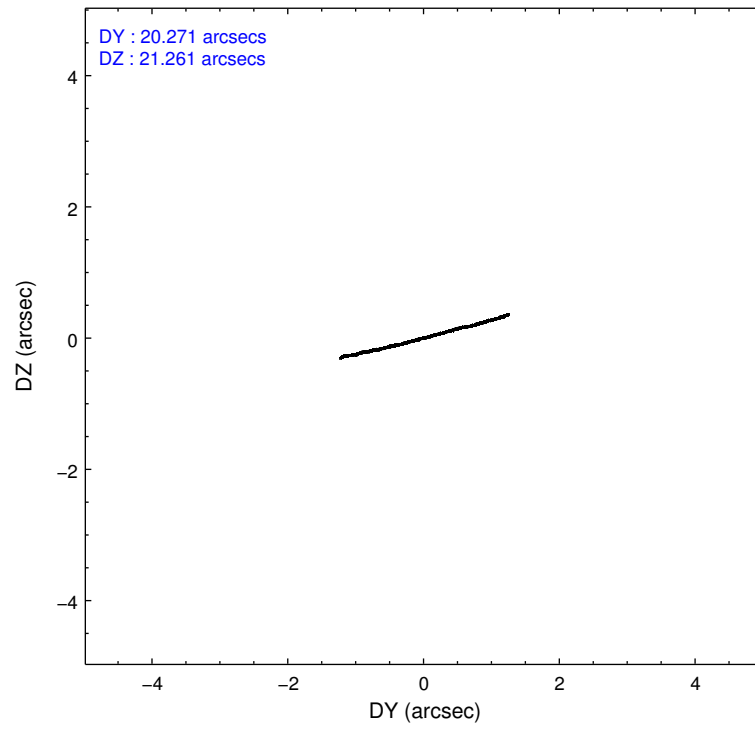
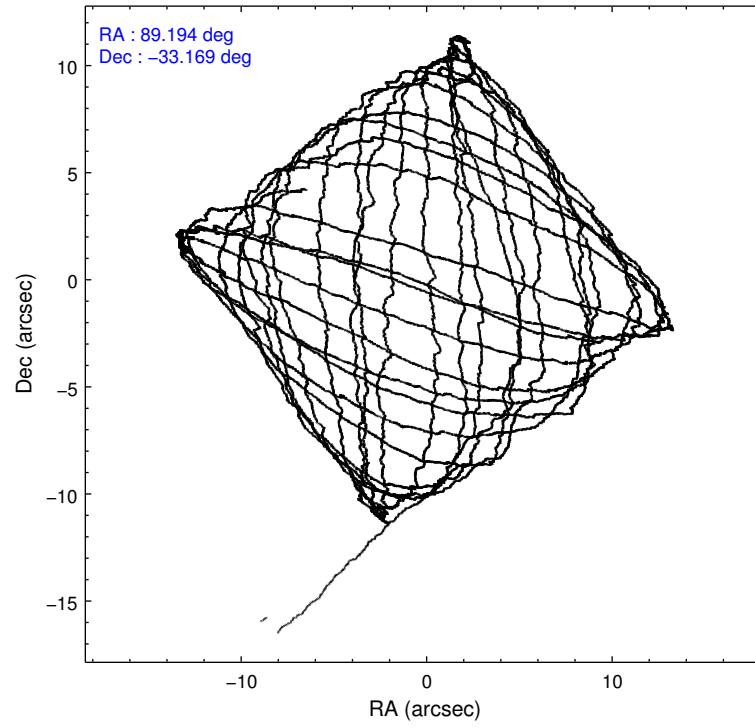
	<b>ccd 7</b>
grade 0 events	674
	4%
grade 1 events	20
	0%
grade 2 events	1370
	9%
grade 3 events	924
	6%
grade 4 events	854
	6%
grade 5 events	1461
	10%
grade 6 events	3110
	21%
grade 7 events	5746
	40%

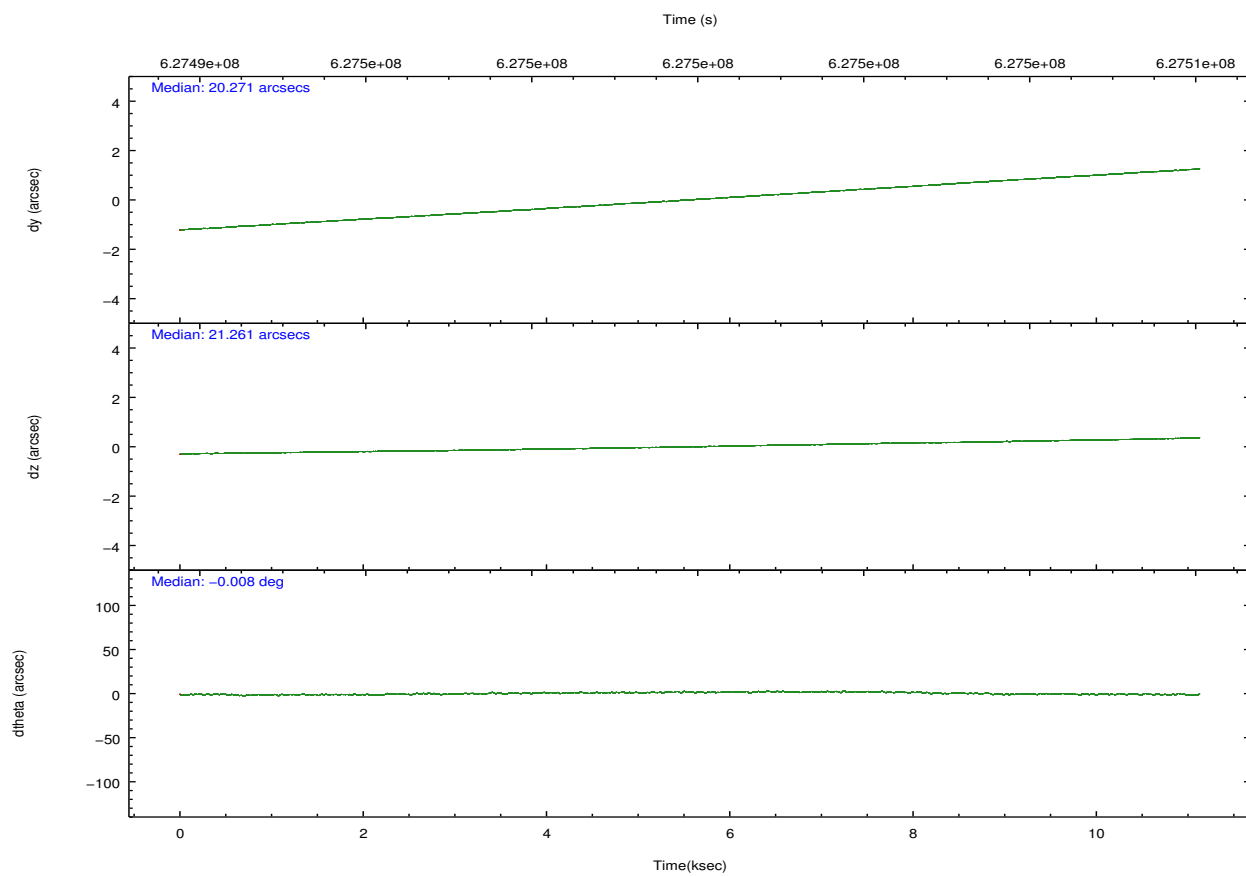
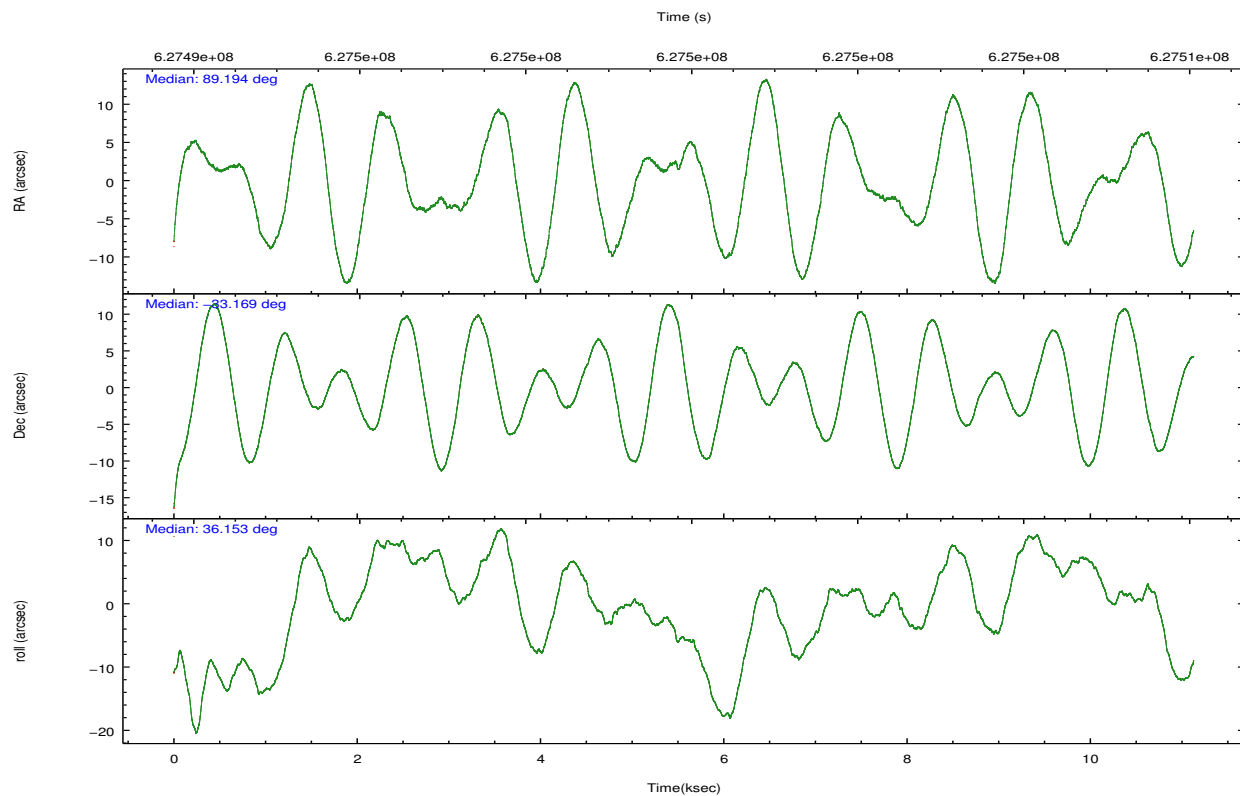


## 2.2 Compared Parameters

Parameter	Planned	Actual	Parameter	Planned	Actual
Instrument	ACIS	ACIS	Obspar format version number	7	7
Detector	ACIS-7	ACIS-7	Obspar file type	PREDICTED	ACTUAL
Grating	NONE	NONE	Obspar update status	NONE	UPDATED
Data mode	FAINT	FAINT	Number of optional ACIS chips dropped	0	0
Observation mode	POINTING	POINTING	On-chip summing requested	N	N
[deg] Pointing RA	89.180898	89.19373716891434	Subarray requested	CUSTOM	1/8
[deg] Pointing Dec	-33.194308	-33.16907176571699	Subarray start row	449	449
[deg] Pointing Roll	35.993377	36.15703820482388	Subarray row count	128	128
[mm] SIM focus pos	-0.684267	-0.6828225247311905	Alternating exposures requested	N	N
[mm] SIM defocus	0	0.001444936568705701	[s] Primary exposure time	0.000000	0.4
[mm] SIM translation stage pos	-190.132523	-190.1400660498719			
[mm] SIM translation stage offset	0	0.00754346686406393			
[s] Observation start time (MET)	627494465.184000	627492784.46209			
Observation start date	2017-11-19T15:59:56	2017-11-19T15:33:04			
[s] Observation end time (MET)	627505465.184000	627506032.58787			
Observation end date	2017-11-19T19:03:16	2017-11-19T19:13:52			
Read mode	TIMED	TIMED			

## 2.3 Aspect



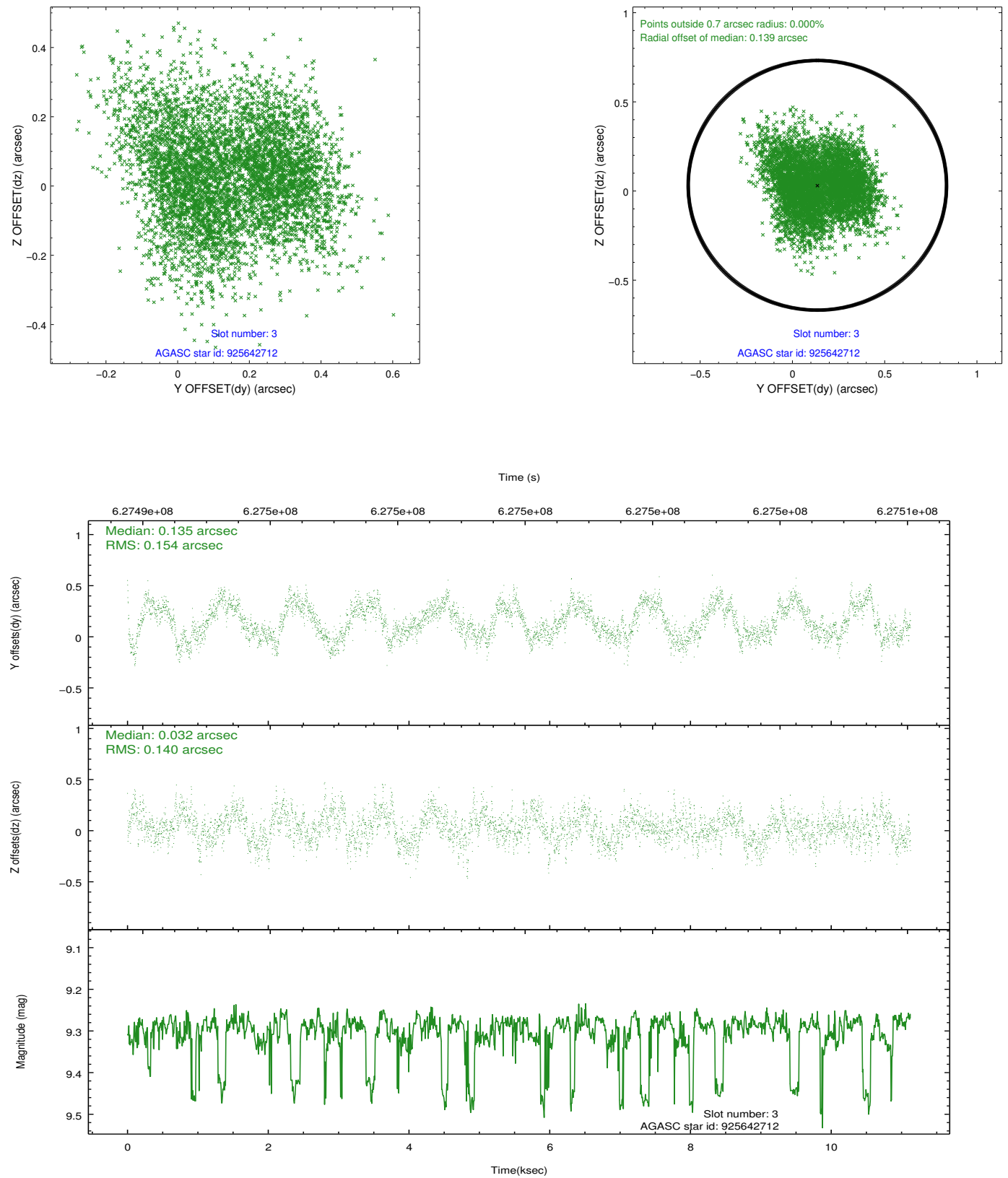


### Slot Statistics

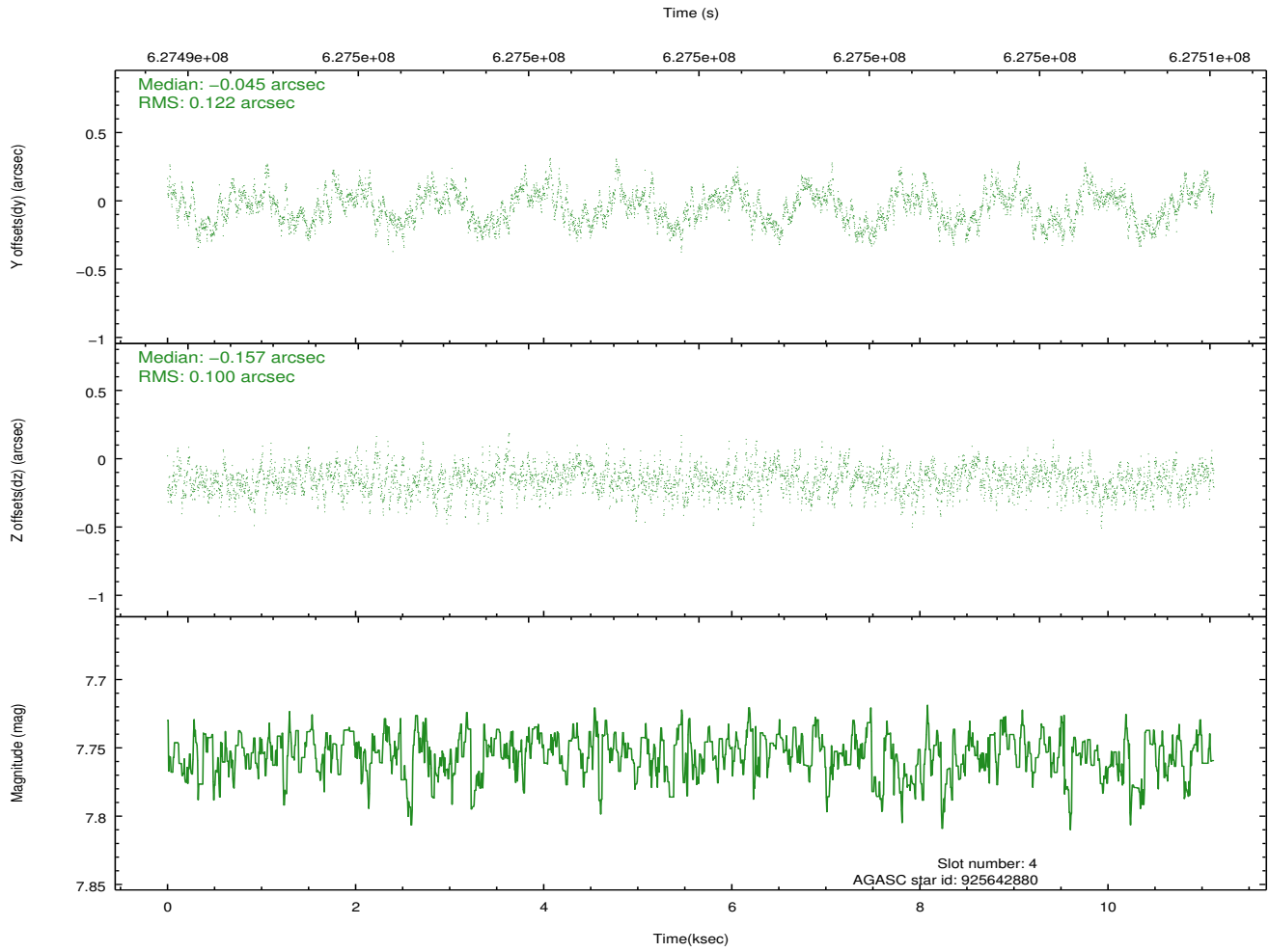
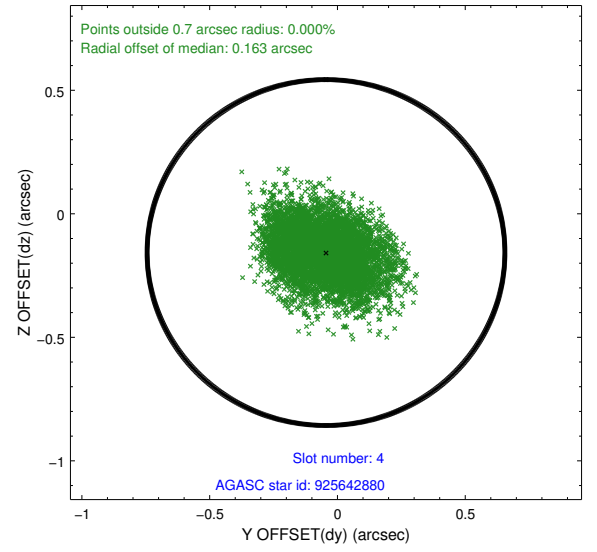
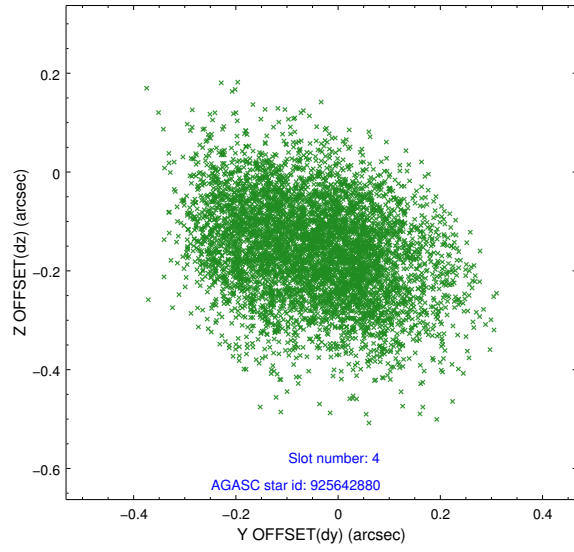
slot	status	used	id	mag	n_pts	med_dy	med_dz	dr1	dr2	ra	dec	mean_y	mean_z
0	FID		ACIS-S-1	7.16	2715	0.301	-0.065	0.019	0.030	0.000000	0.000000	923.01	-1738.48
1	FID		ACIS-S-2	7.08	2715	-0.181	-0.064	0.017	0.028	0.000000	0.000000	-773.12	-1743.57
2	FID		ACIS-S-5	7.19	2715	-0.144	0.135	0.011	0.019	0.000000	0.000000	-1826.87	158.69
3	GUIDE	used	925642712	9.29	5422	0.135	0.032	0.224	0.343	89.246145	-33.485552	-457.29	-963.40
4	GUIDE	used	925642880	7.75	5429	-0.045	-0.157	0.171	0.266	89.133148	-33.434507	-623.55	-615.32
5	GUIDE	used	925643520	9.18	5420	-0.021	0.066	0.204	0.333	88.970468	-33.727415	-1638.40	-1183.56
6	GUIDE	used	925645552	7.57	5429	-0.122	0.049	0.115	0.199	88.738097	-33.665766	-2072.36	-595.84
7	GUIDE	used	927349400	9.68	5383	0.037	0.016	0.257	0.420	90.150883	-33.356822	2008.49	-2198.16

## 2.4 Star Slots

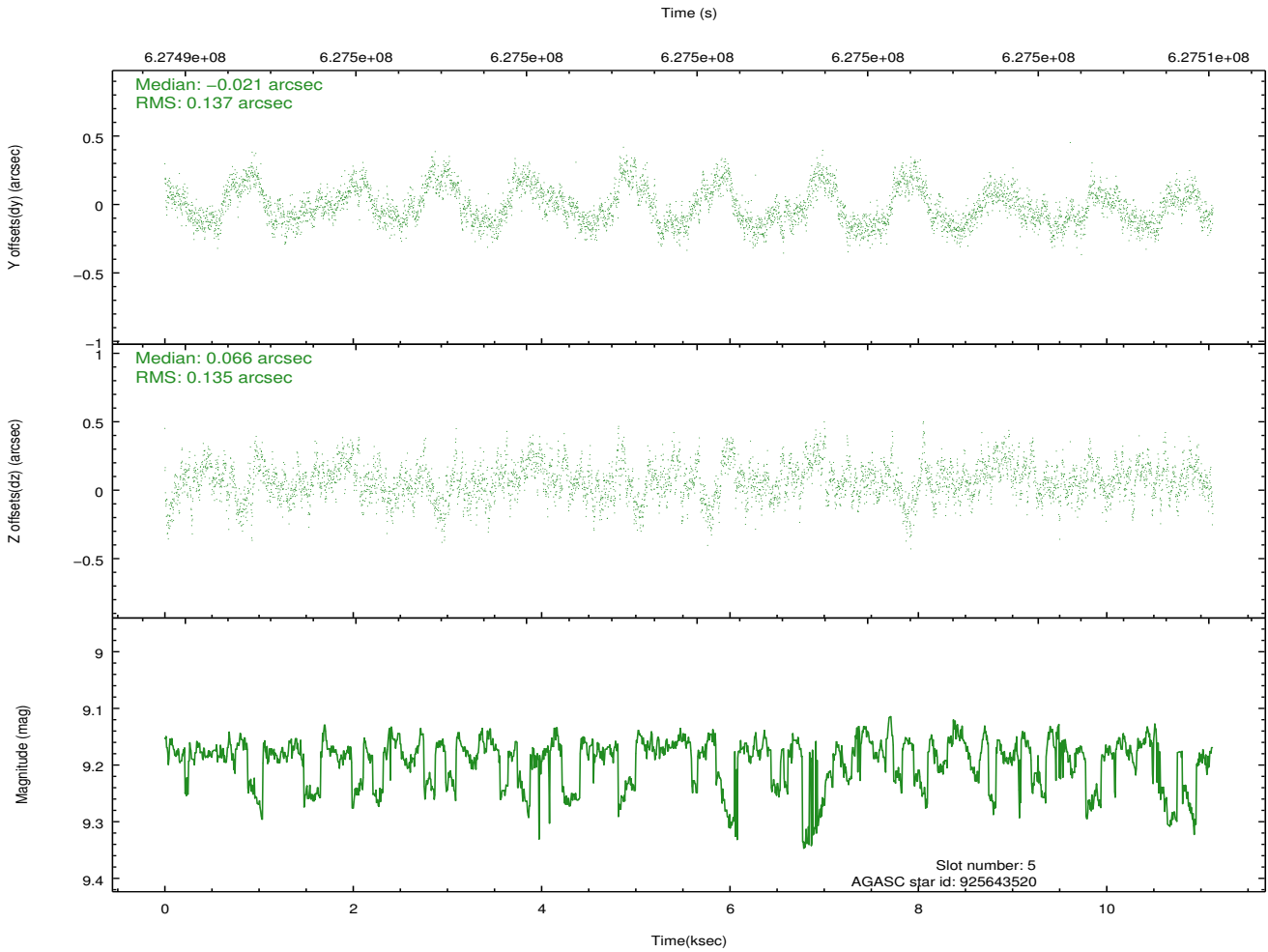
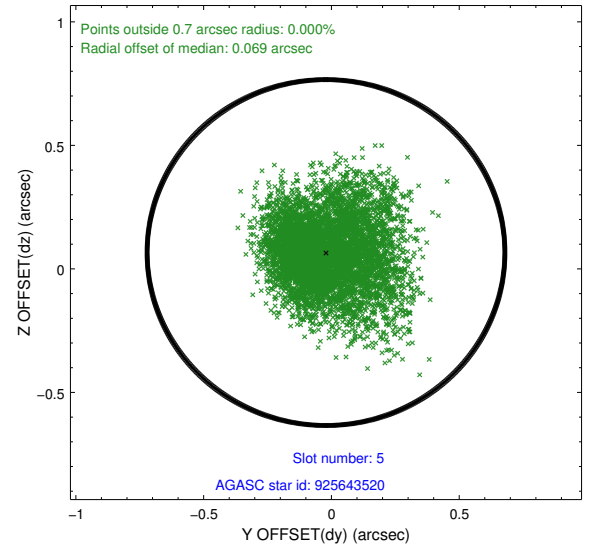
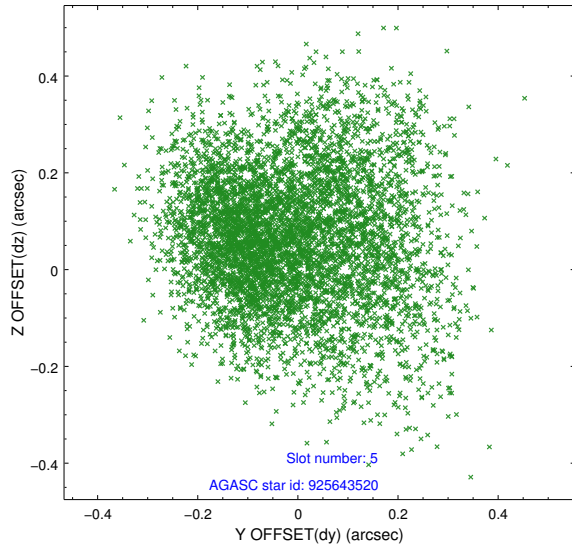
### 2.4.1 Slot 3



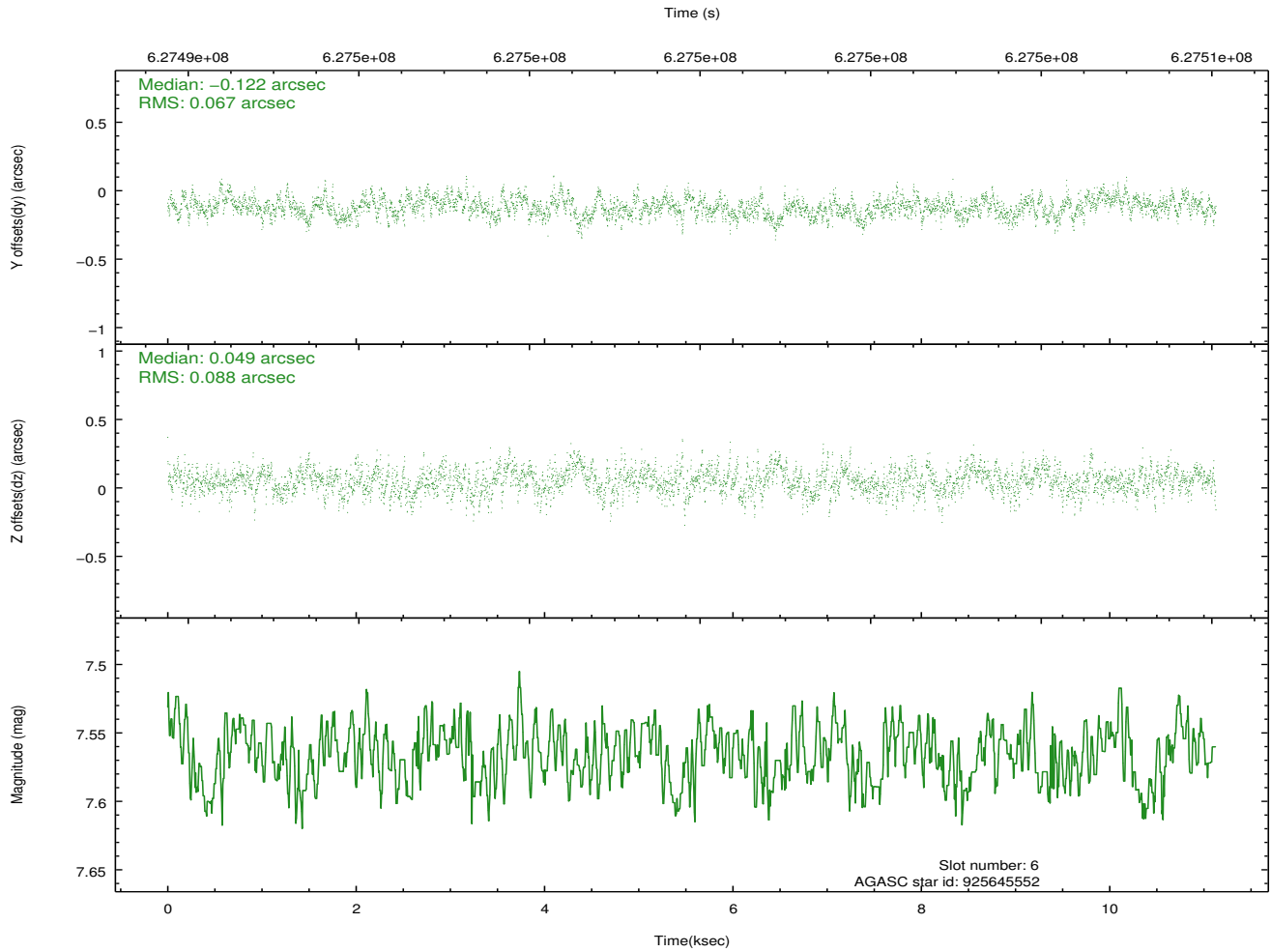
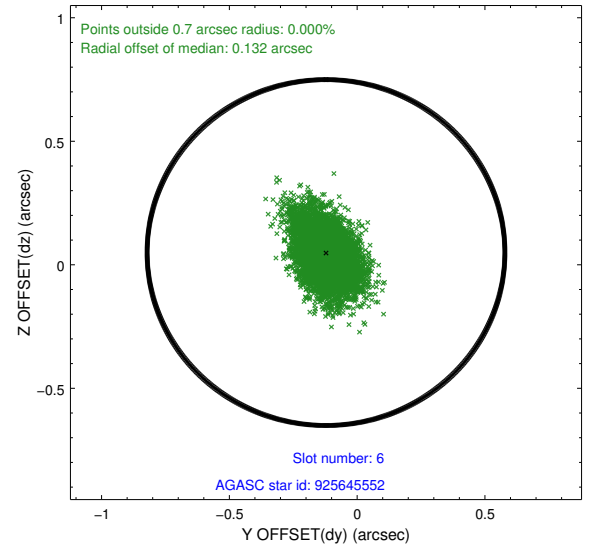
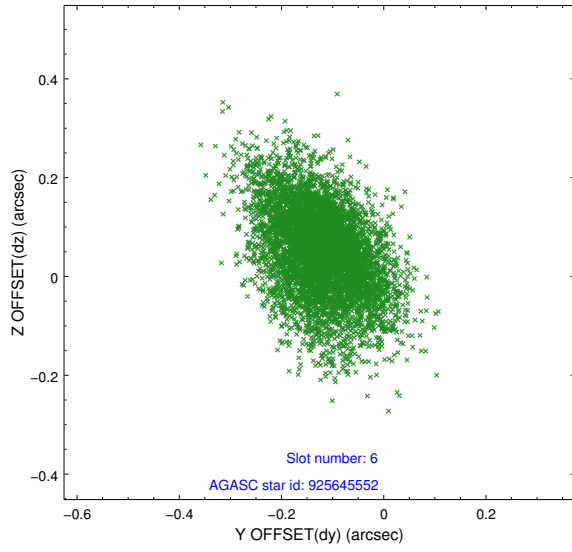
## 2.4.2 Slot 4



### 2.4.3 Slot 5

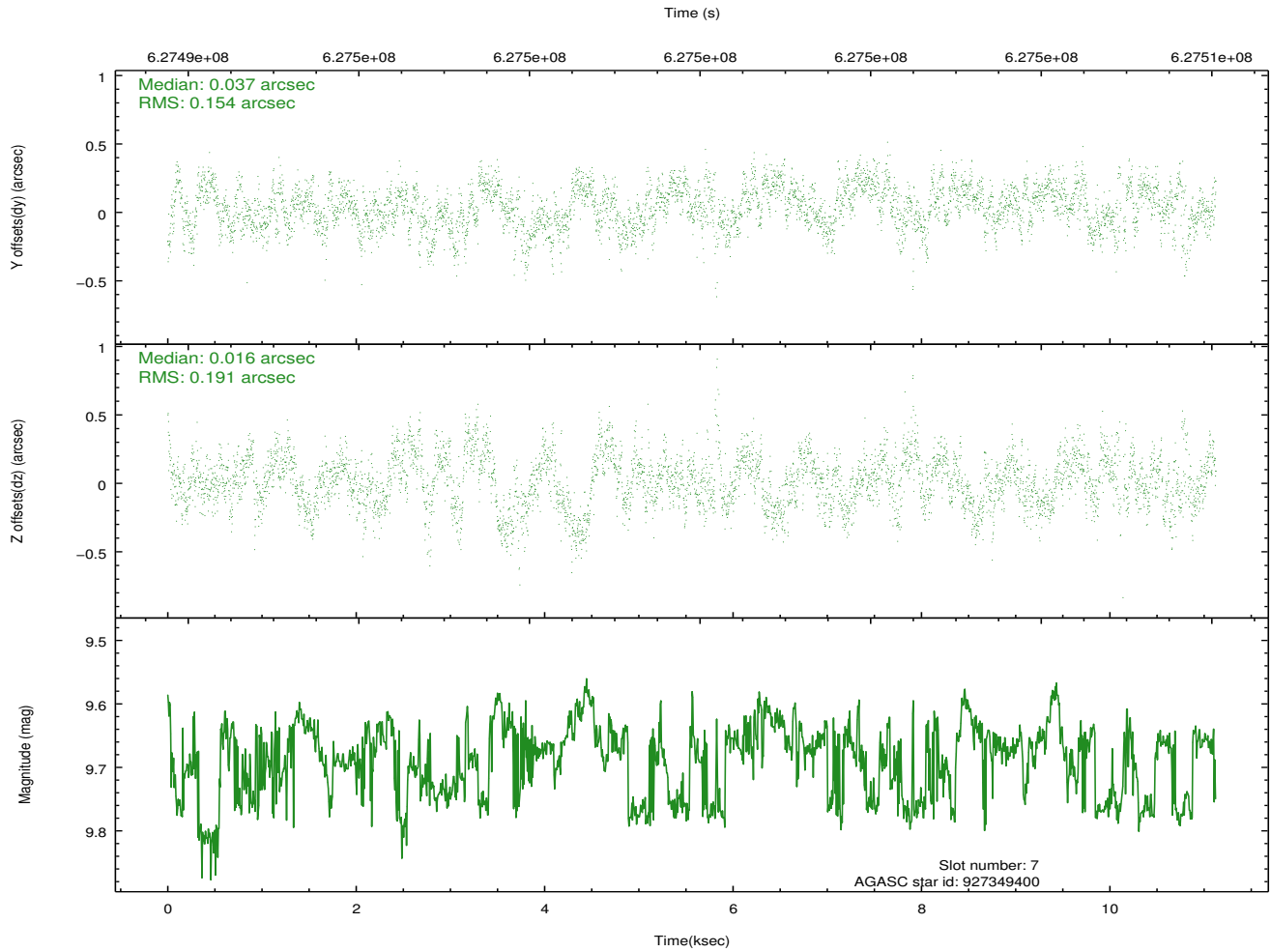
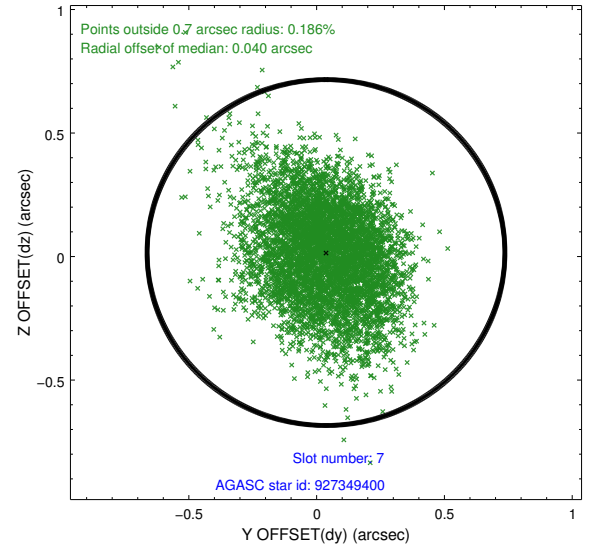
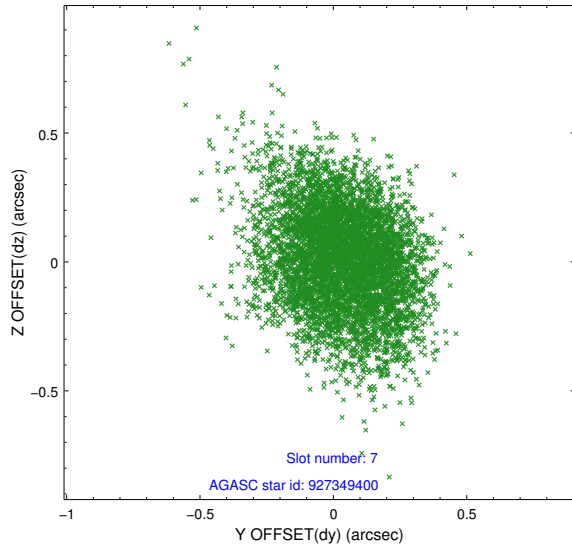


## 2.4.4 Slot 6



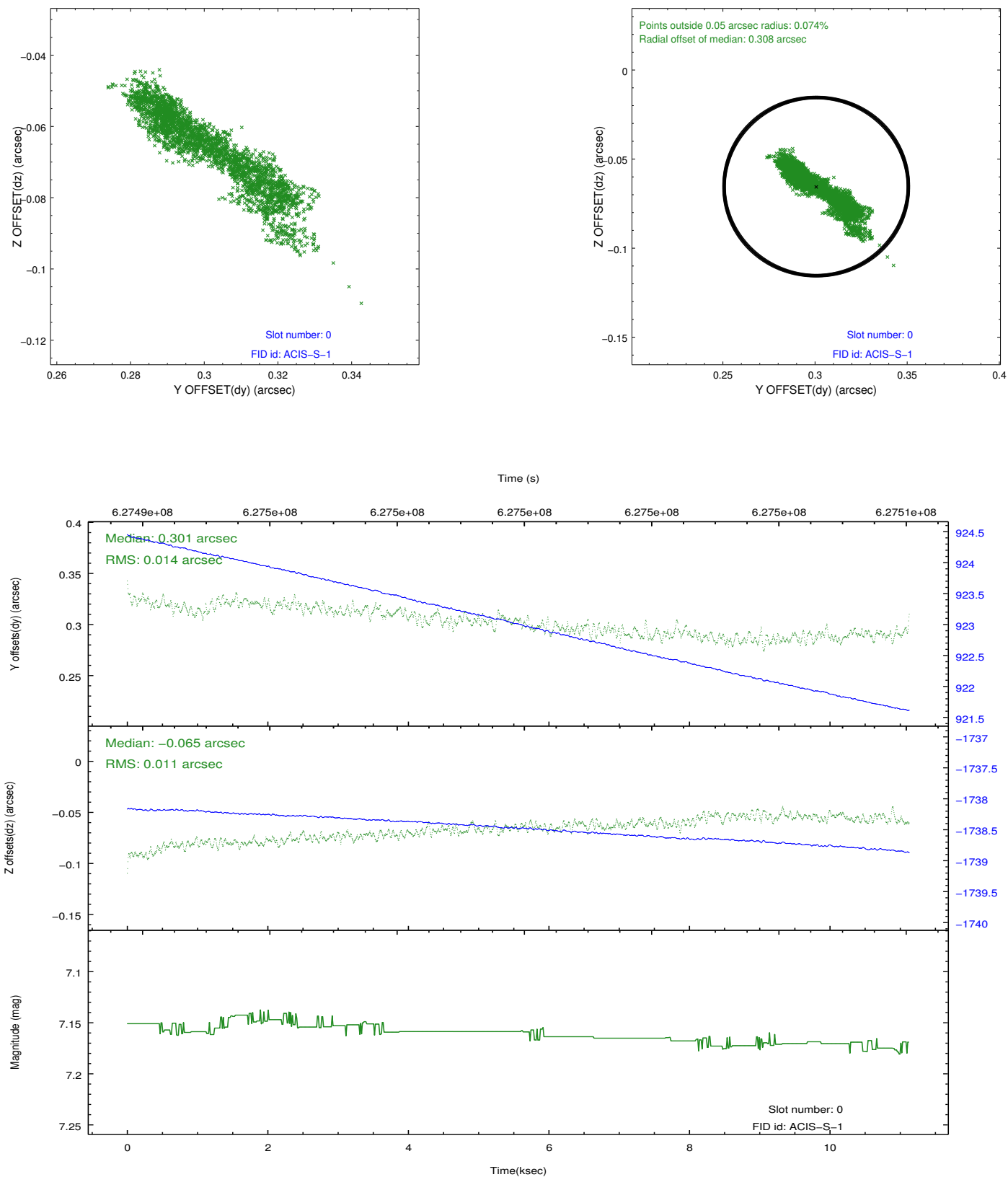


## 2.4.5 Slot 7

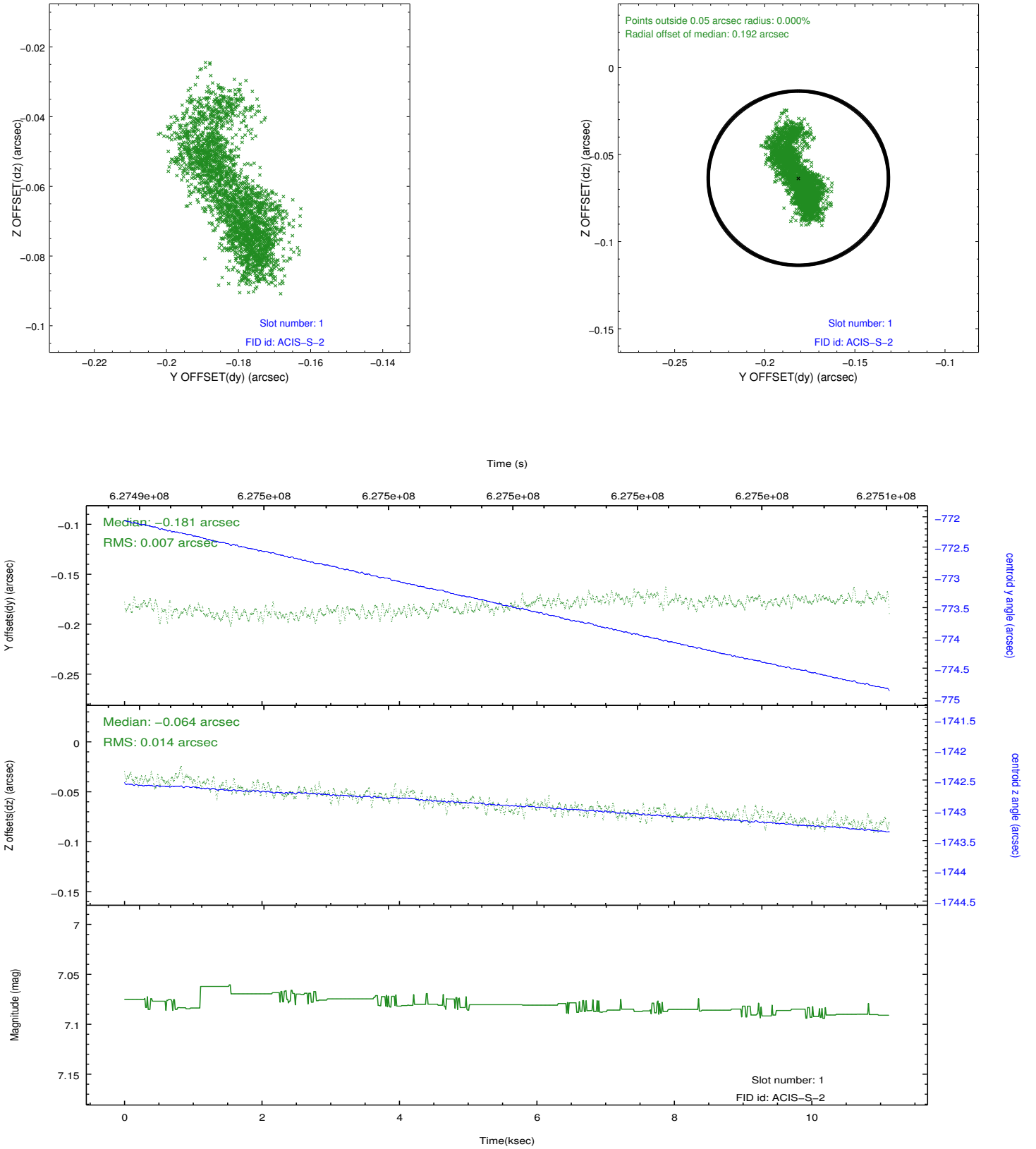


## 2.5 FID Slots

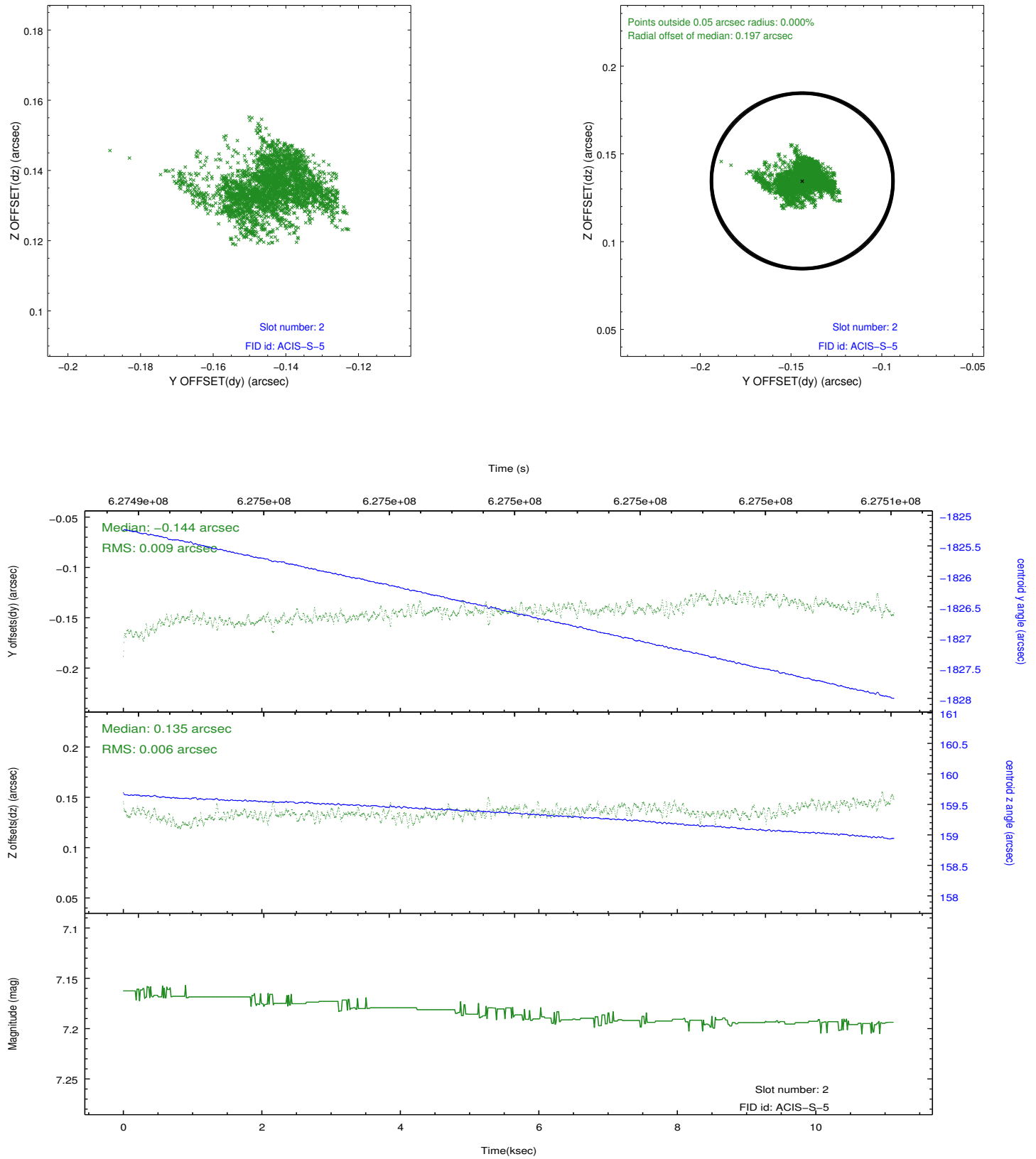
### 2.5.1 Slot 0



## 2.5.2 Slot 1



### 2.5.3 Slot 2



## A Summary

### A.1 Status

V&V Scientist	Jen Lauer
V&V Date (YYYY-MM-DD)	2017.11.20
V&V Edition	1
V&V Disposition and Status	OK
V&V Charge Time	11.069076414824

### A.2 Comments

Monitor constraint met.