

V&V Reference Report

L2 ASCDS Version : 10.4.3

Observation 18742 - L2 Version 1
Chandra X-Ray Center

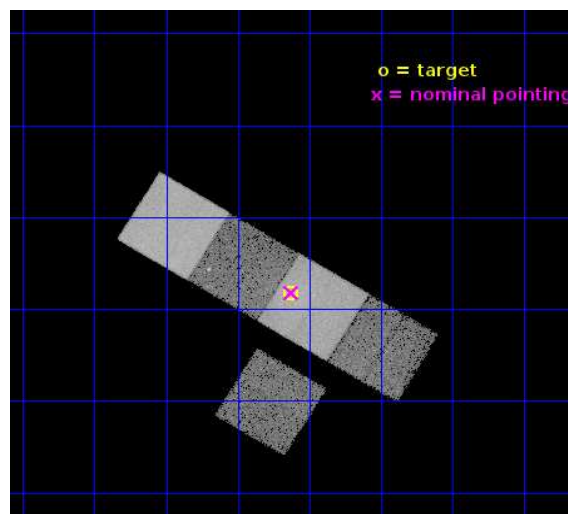
L2 Processing Date : Jan 7 2016

Contents

1	Front	2
2	OBI	3
2.1	OBI	3
2.1.1	Images	3
2.1.2	Bias	3
2.1.3	Parameters	4
2.1.4	Events	4
2.2	Compared Parameters	5
2.3	Aspect	6
2.4	Star Slots	9
2.4.1	Slot 3	9
2.4.2	Slot 4	10
2.4.3	Slot 5	11
2.4.4	Slot 6	12
2.4.5	Slot 7	13
2.5	FID Slots	14
2.5.1	Slot 0	14
2.5.2	Slot 1	15
2.5.3	Slot 2	16
A	Summary	17
A.1	Status	17
A.2	Comments	17

1 Front

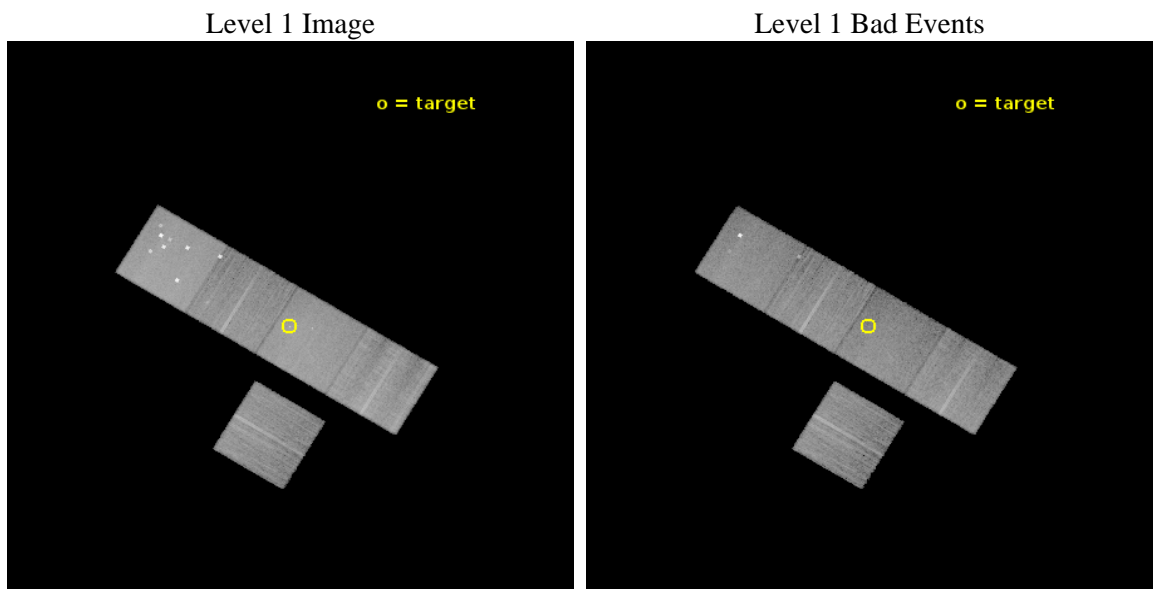
seq_num	801544	Sequence number
obs_id	18742	Observation id
title	Bending of WAT Radio Lobes in Abell 623 Through ICM Sloshing	Propo
observer	Prof. Elizabeth Blanton	Principal investigator
object	Abell 623	Source name
dtcycle	0	
cycle	P	events from which exps? Prim/Second/Both
ra_targ	121.4075	Observer's specified target RA [deg]
dec_targ	-0.972361	Observer's specified target Dec [deg]
ra_nom	121.40636648934	Nominal RA [deg]
dec_nom	-0.97025039825925	Nominal Dec [deg]
roll_nom	31.156610450098	Nominal Roll [deg]
revision	1	Processing version of data
ontime	20772.508872151	Sum of GTIs [s]
livetime	20501.100751238	Livetime [s]
ontime3	20772.385752201	Sum of GTIs [s]
ontime5	20772.467832208	Sum of GTIs [s]
ontime6	20772.426792145	Sum of GTIs [s]
ontime7	20772.508872151	Sum of GTIs [s]
ontime8	20750.357361078	Sum of GTIs [s]
l2events	205874	Number of level 2 events



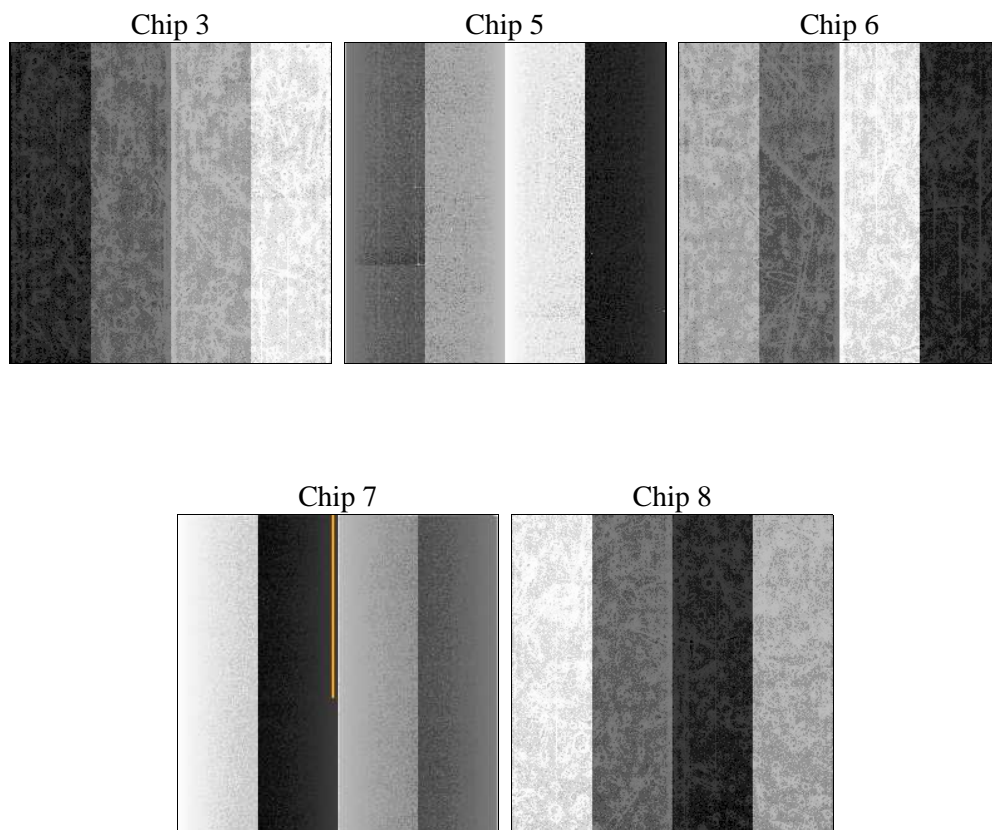
2 OBI

2.1 OBI

2.1.1 Images



2.1.2 Bias



2.1.3 Parameters

obi_num	0	Obi number	sched_exp_time	21000.000000	[s] Scheduled observation exposure time
ascdsver	10.4.3	Processing system revision	ontime	20772.508872151	Sum of GTIs [s]
caldsver	4.7.0	 	ontime3	20772.385752201	Sum of GTIs [s]
date	2016-01-08T04:18:07	Date and time of file creation	ontime5	20772.467832208	Sum of GTIs [s]
revision	1	Processing version of data	ontime6	20772.426792145	Sum of GTIs [s]
			ontime7	20772.508872151	Sum of GTIs [s]
			ontime8	20750.357361078	Sum of GTIs [s]
			l1events	807900	Number of level 1 events

2.1.4 Events

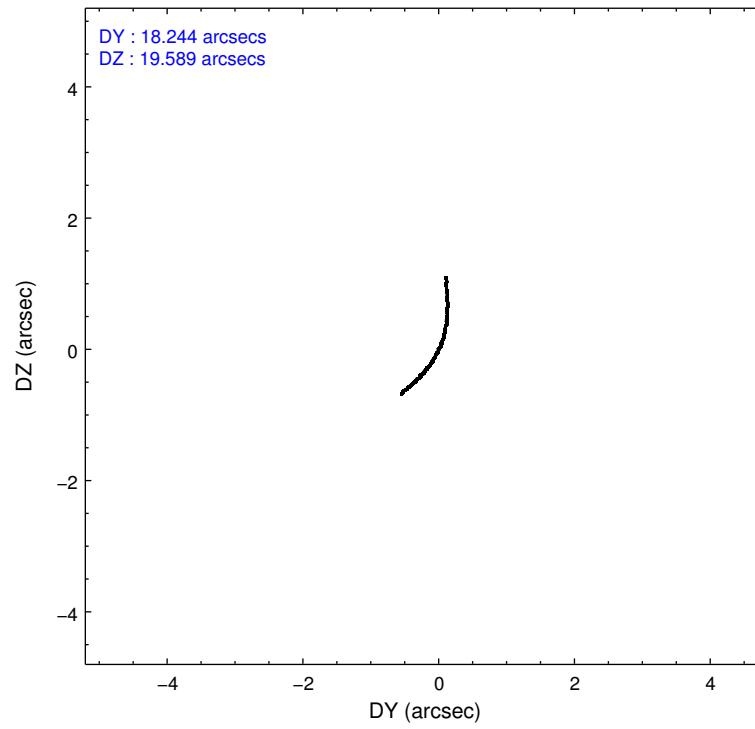
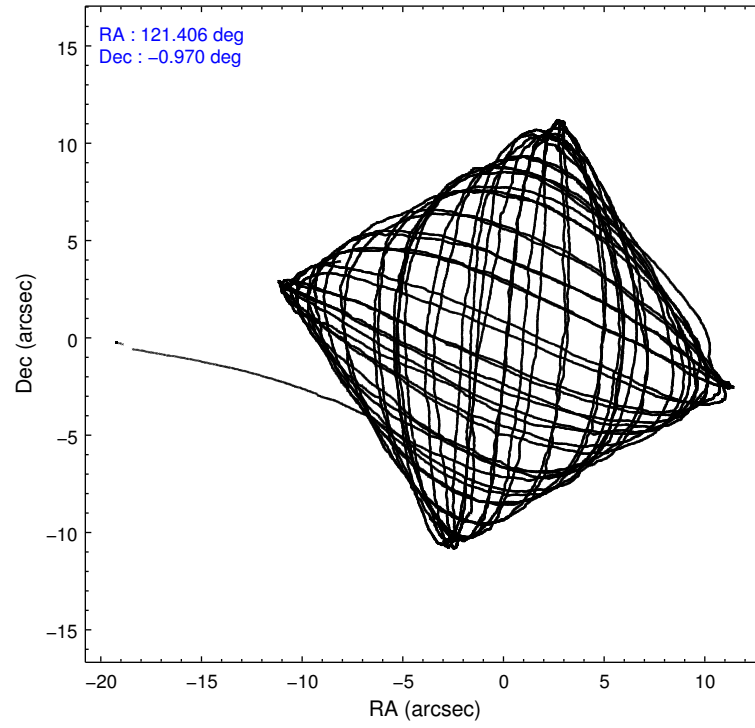
	ccd 3	ccd 5	ccd 6	ccd 7	ccd 8
level 1 events	121416	228130	125186	170482	162686
rejected events	107275	110395	109229	93598	120045
rejected %	88%	48%	87%	54%	73%

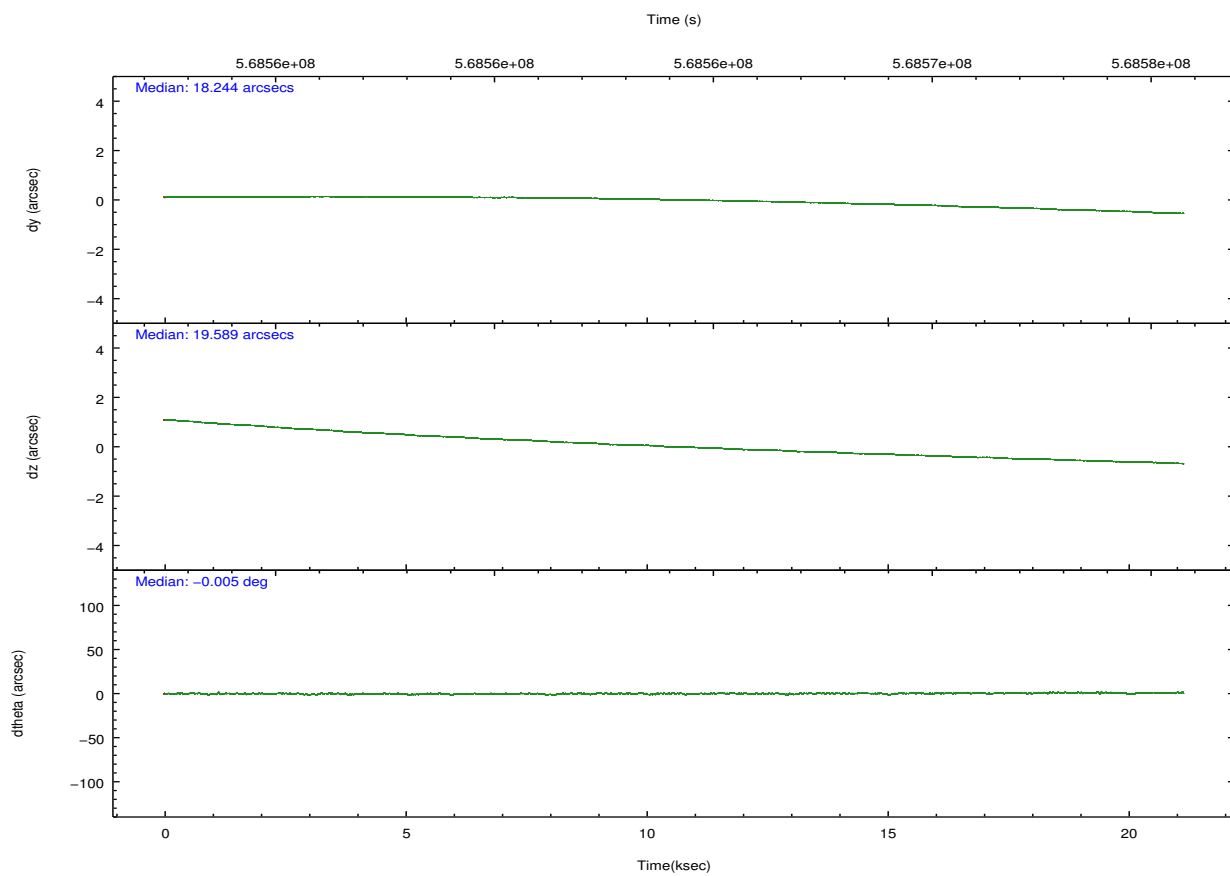
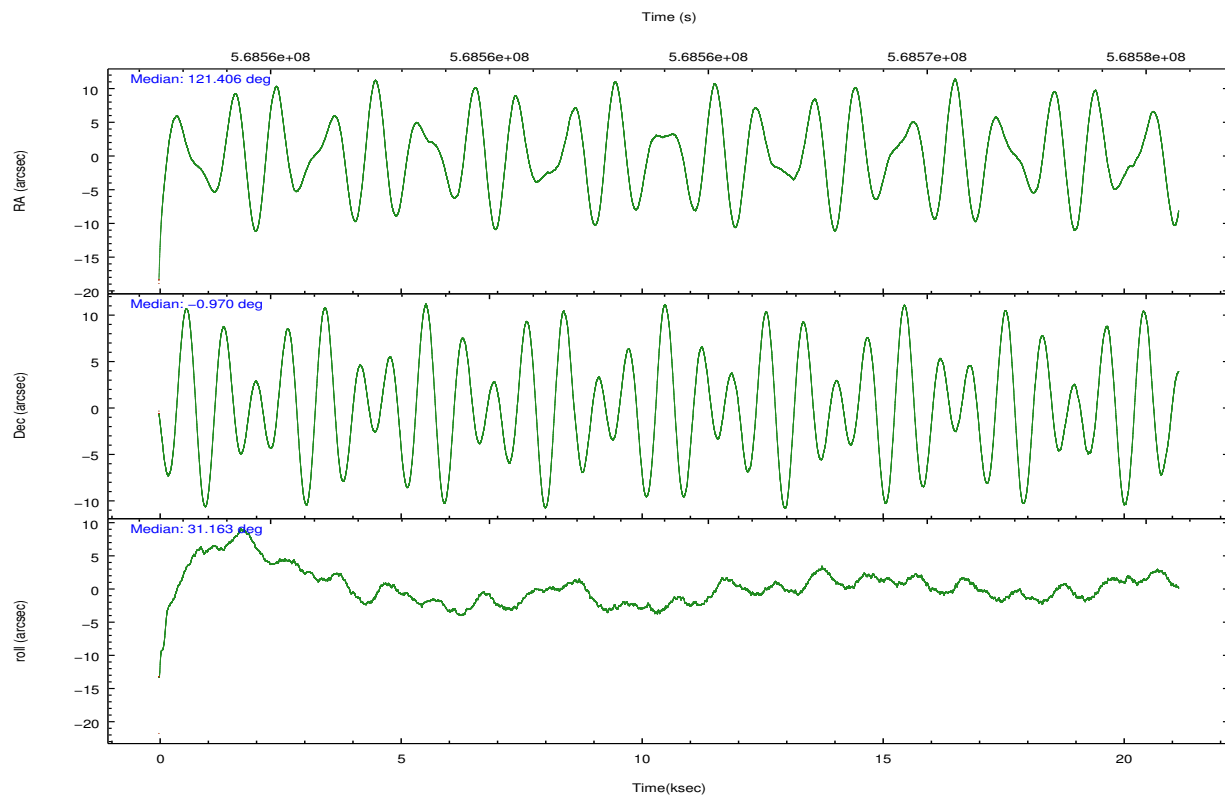
	ccd 3	ccd 5	ccd 6	ccd 7	ccd 8
grade 0 events	5580	25253	6037	7962	11954
	4%	11%	4%	4%	7%
grade 1 events	80	446	50	219	110
	0%	0%	0%	0%	0%
grade 2 events	2918	31366	3414	16711	10498
	2%	13%	2%	9%	6%
grade 3 events	1381	3755	1575	6492	4598
	1%	1%	1%	3%	2%
grade 4 events	1433	4701	1497	6380	4106
	1%	2%	1%	3%	2%
grade 5 events	5979	14598	6155	16453	9074
	4%	6%	4%	9%	5%
grade 6 events	2832	52710	3439	39365	11490
	2%	23%	2%	23%	7%
grade 7 events	101213	95301	103019	76900	110856
	83%	41%	82%	45%	68%

2.2 Compared Parameters

Parameter	Planned	Actual	Parameter	Planned	Actual
Instrument	ACIS	ACIS	Obspar format version number	7	7
Detector	ACIS-35678	ACIS-35678	Obspar file type	PREDICTED	ACTUAL
Grating	NONE	NONE	Obspar update status	NONE	UPDATED
Data mode	VFAINT	VFAINT	CCD I0 on	N	N
Observation mode	POINTING	POINTING	CCD I1 on	N	N
[deg] Pointing RA	121.393458	121.4063664893405	CCD I2 on	O1	N
[deg] Pointing Dec	-0.994456	-0.9702503982592535	CCD I3 on	Y	Y
[deg] Pointing Roll	30.999763	31.15661045009751	CCD S0 on	N	N
[mm] SIM focus pos	-0.684267	-0.6828225247311905	CCD S1 on	Y	Y
[mm] SIM defocus	0	0.001444936568705701	CCD S2 on	Y	Y
[mm] SIM translation stage pos	-190.132523	-190.1400660498719	CCD S3 on	Y	Y
[mm] SIM translation stage offset	0	0.00754346686406393	CCD S4 on	Y	Y
[s] Observation start time (MET)	568553666.184000	568552422.90908	CCD S5 on	N	N
Observation start date	2016-01-07T11:33:18	2016-01-07T11:13:42	Number of optional ACIS chips dropped	1	1
[s] Observation end time (MET)	568574666.184000	568575286.56037	On-chip summing requested	N	N
Observation end date	2016-01-07T17:23:18	2016-01-07T17:34:46	Subarray requested	NONE	NONE
Read mode	TIMED	TIMED	Alternating exposures requested	N	N
			[s] Primary exposure time	0.000000	3.1

2.3 Aspect



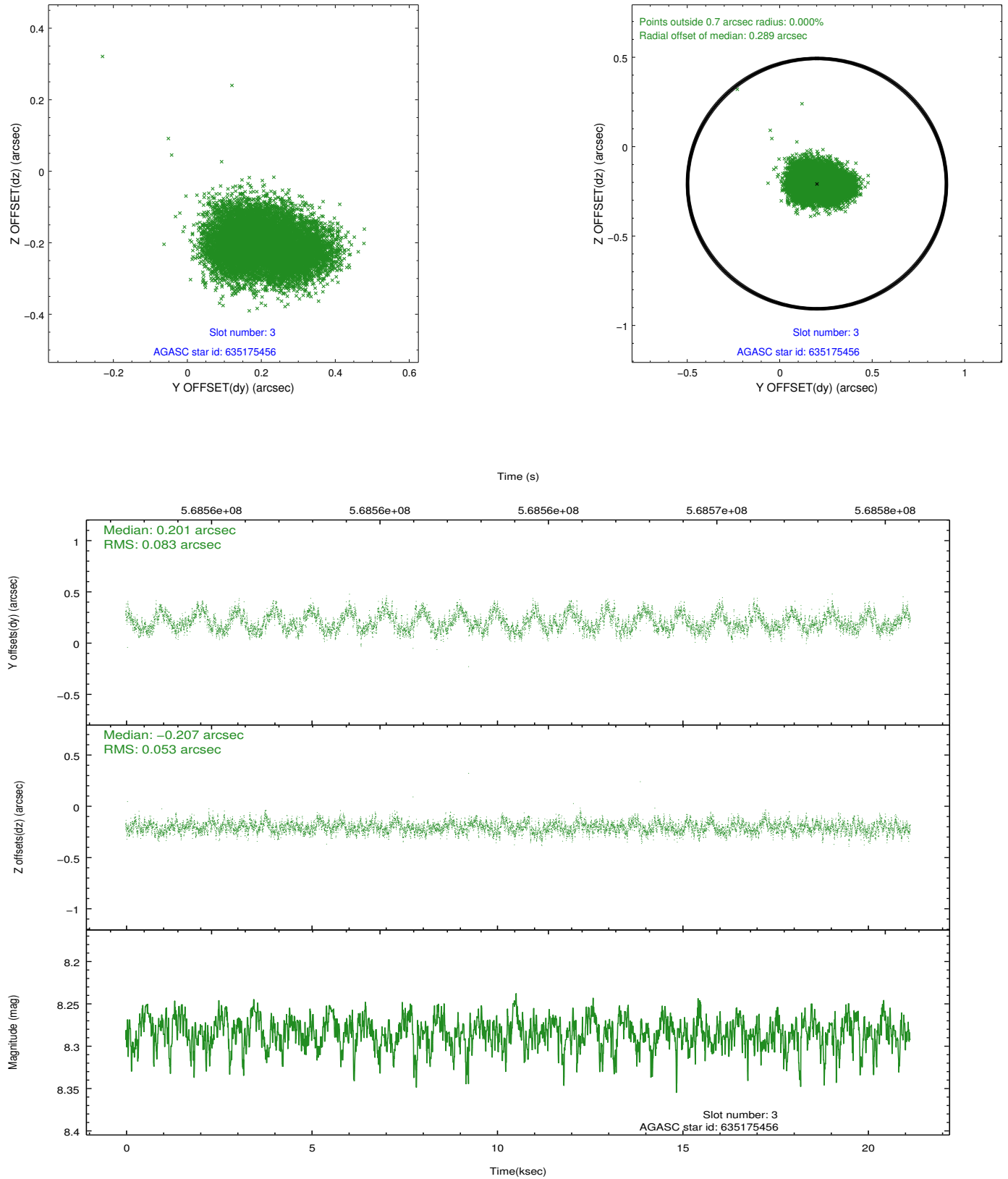


Slot Statistics

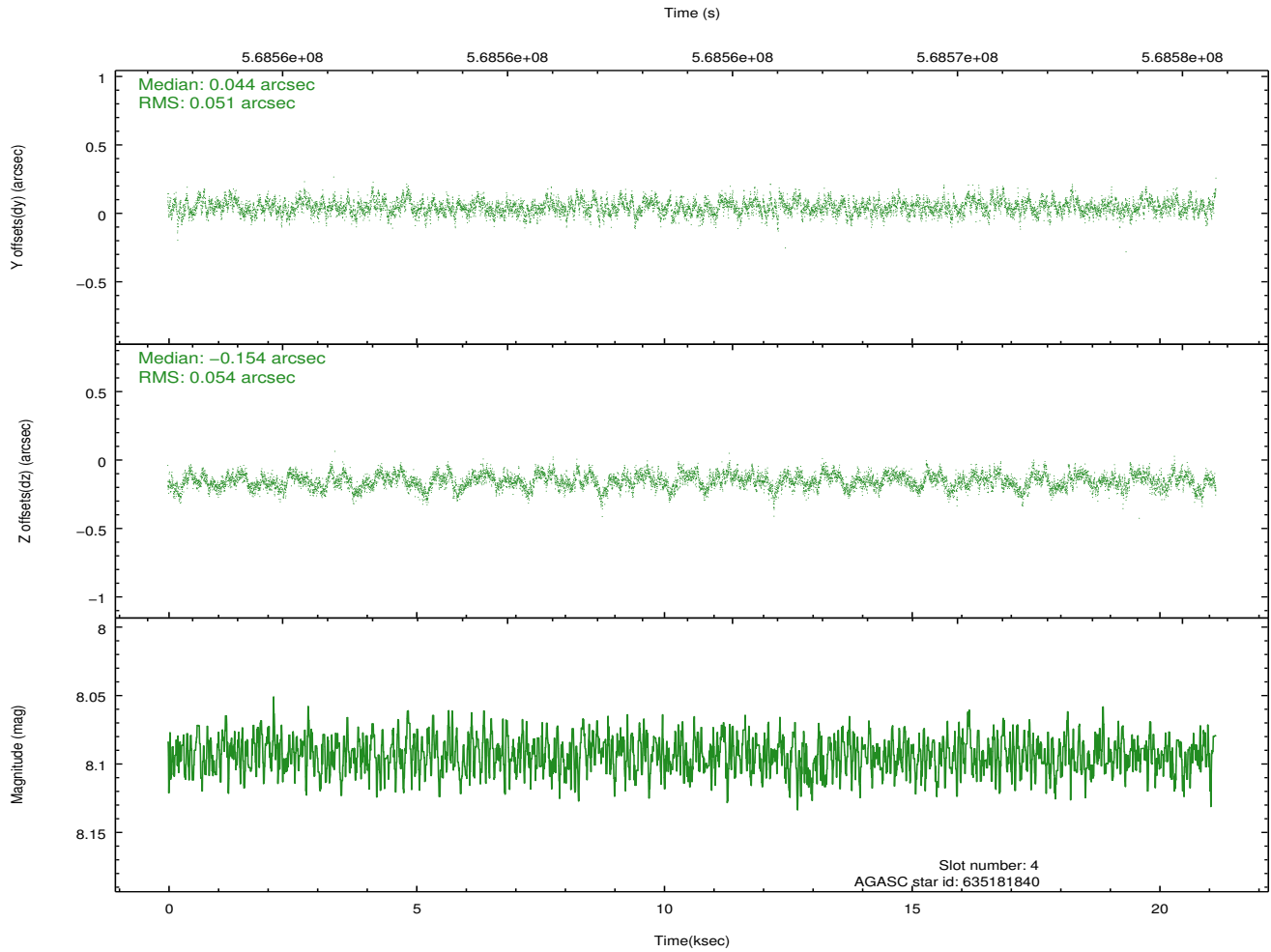
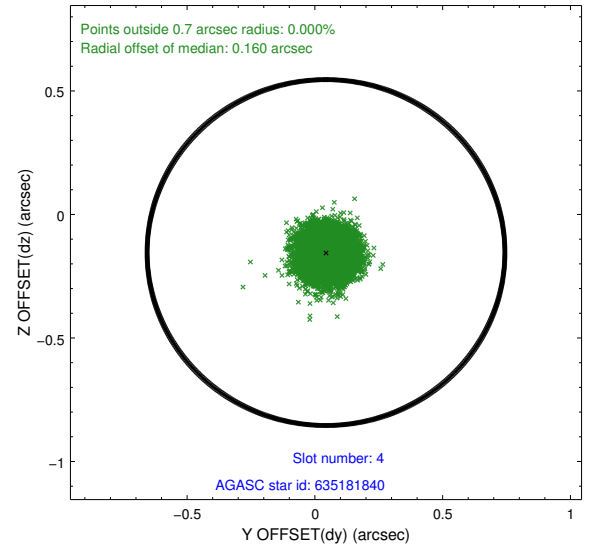
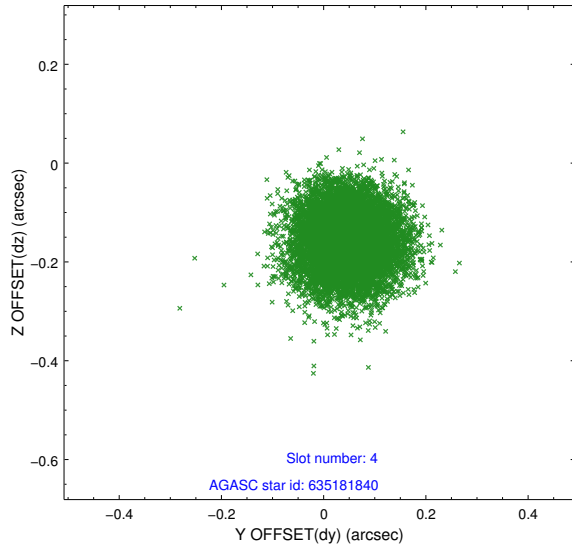
slot	status	used	id	mag	n_pts	med_dy	med_dz	dr1	dr2	ra	dec	mean_y	mean_z
0	FID		ACIS-S-2	7.13	5161	-0.178	-0.115	0.014	0.022	0.000000	0.000000	-771.38	-1741.29
1	FID		ACIS-S-4	7.23	5161	0.433	0.116	0.007	0.014	0.000000	0.000000	2142.40	167.29
2	FID		ACIS-S-5	7.24	5161	-0.288	0.008	0.015	0.023	0.000000	0.000000	-1824.14	160.99
3	GUIDE	used	635175456	8.28	10317	0.201	-0.207	0.106	0.164	120.869443	-1.162712	-1930.99	449.86
4	GUIDE	used	635181840	8.09	10318	0.044	-0.154	0.079	0.128	121.314480	-0.875496	-23.22	513.52
5	GUIDE	used	635188464	8.34	10320	0.056	0.511	0.090	0.144	121.115178	-1.595138	-1972.16	-1337.01
6	GUIDE	used	635191912	6.29	10321	-0.472	-0.014	0.088	0.135	121.456804	-0.573324	975.89	1181.96
7	GUIDE	used	635185504	9.17	10314	0.161	-0.138	0.130	0.206	120.991092	-1.061098	-1364.58	540.25

2.4 Star Slots

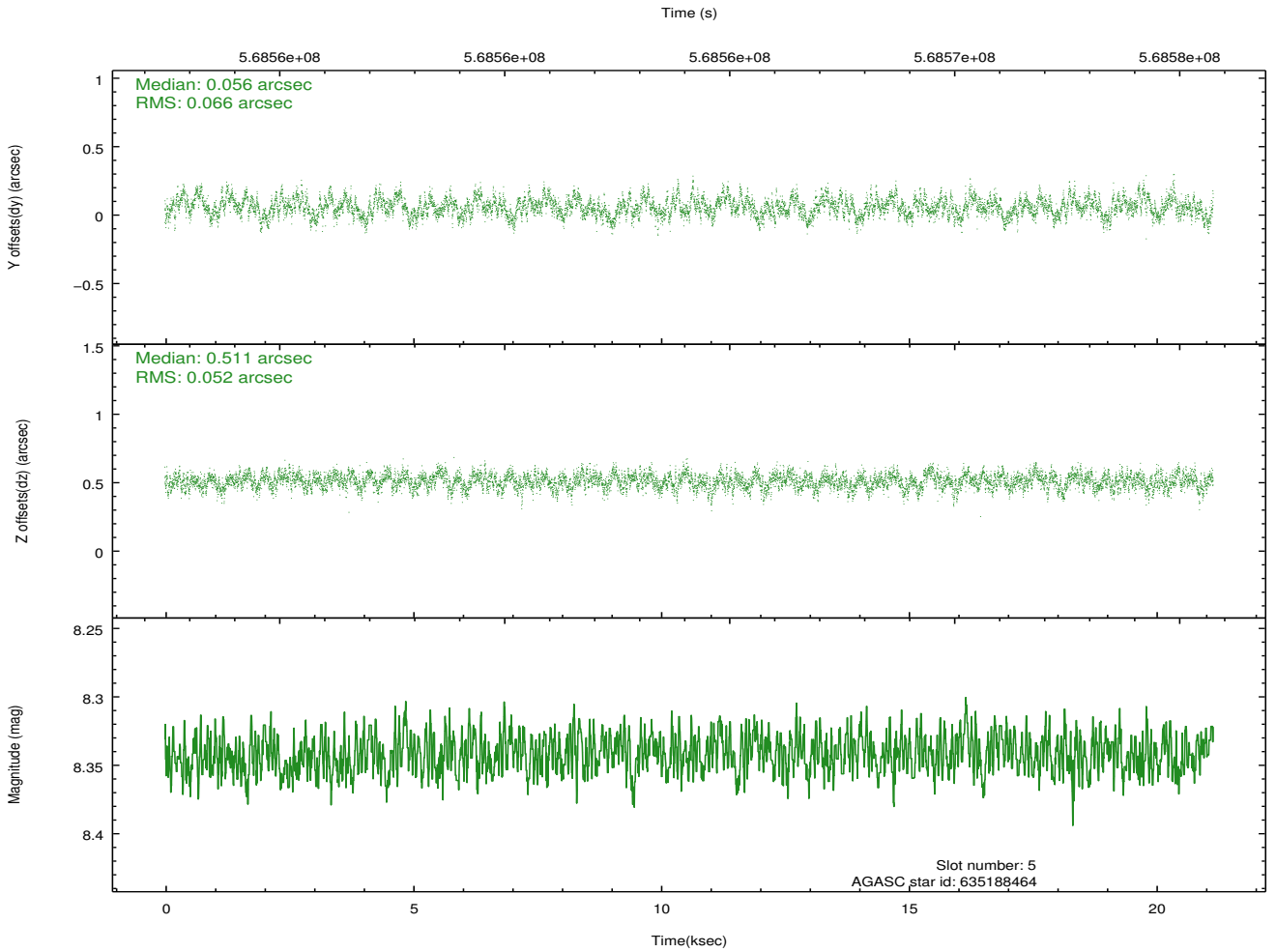
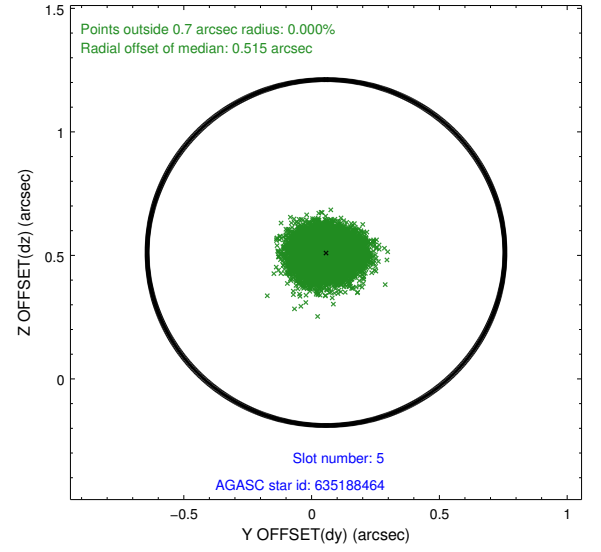
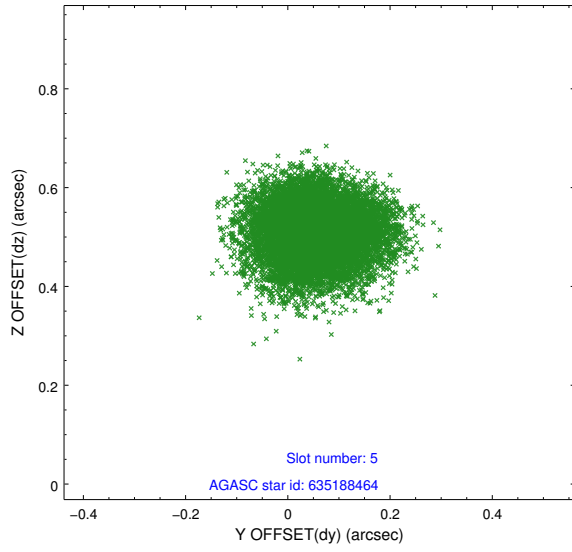
2.4.1 Slot 3



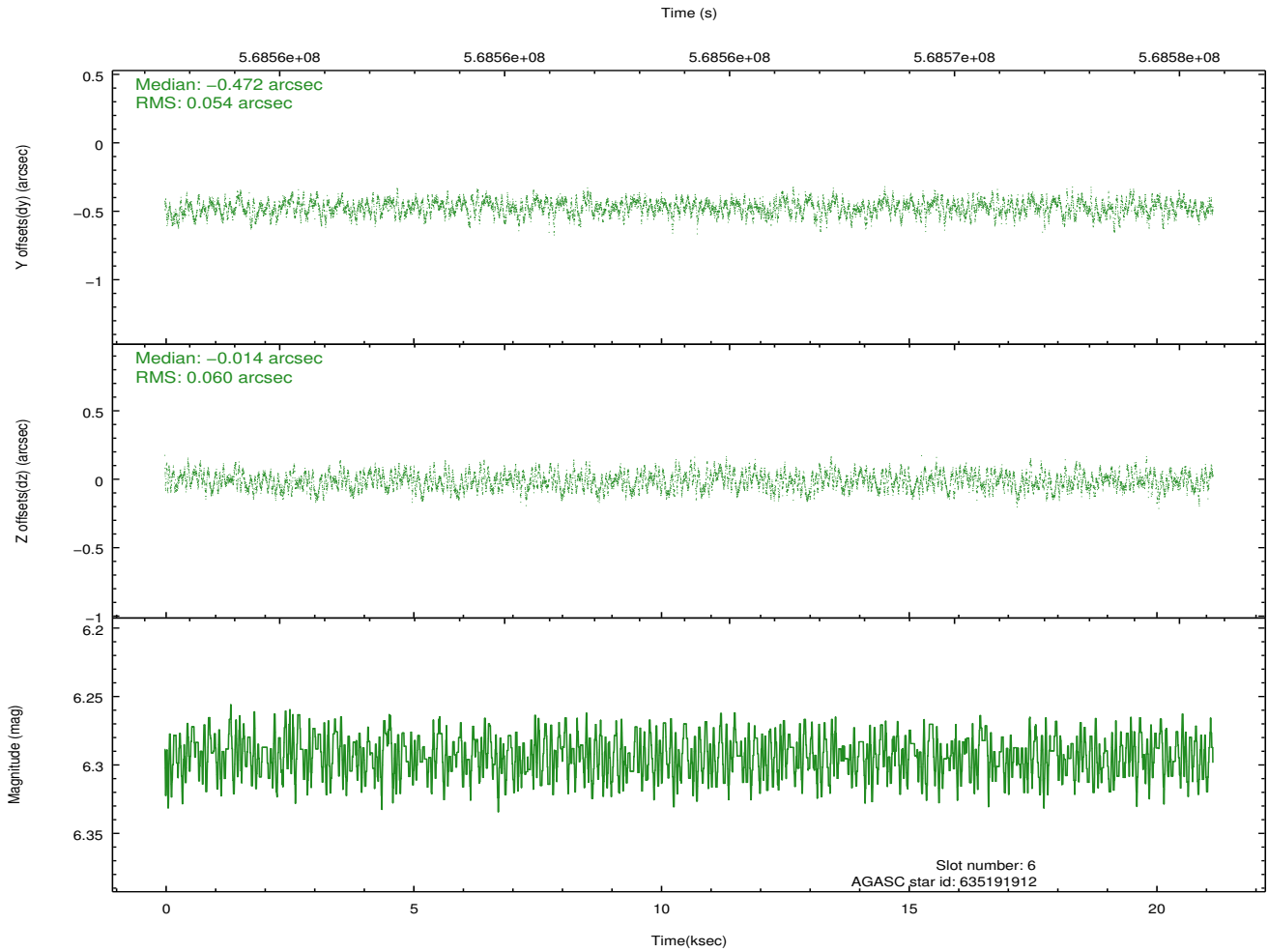
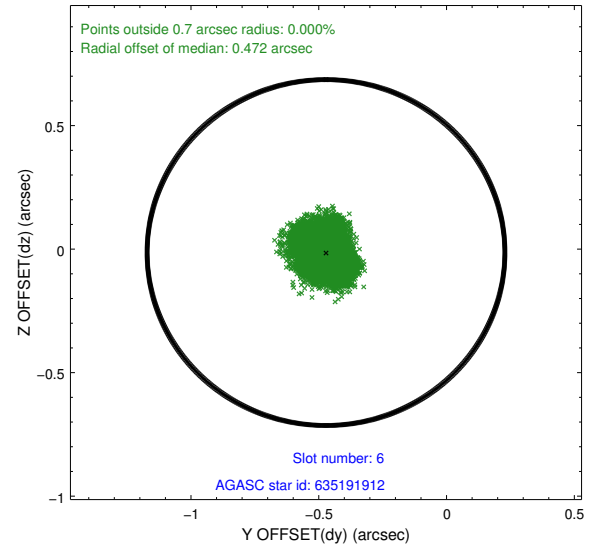
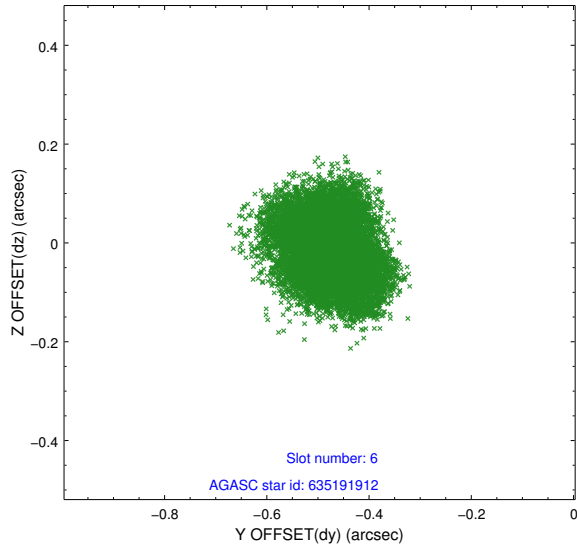
2.4.2 Slot 4



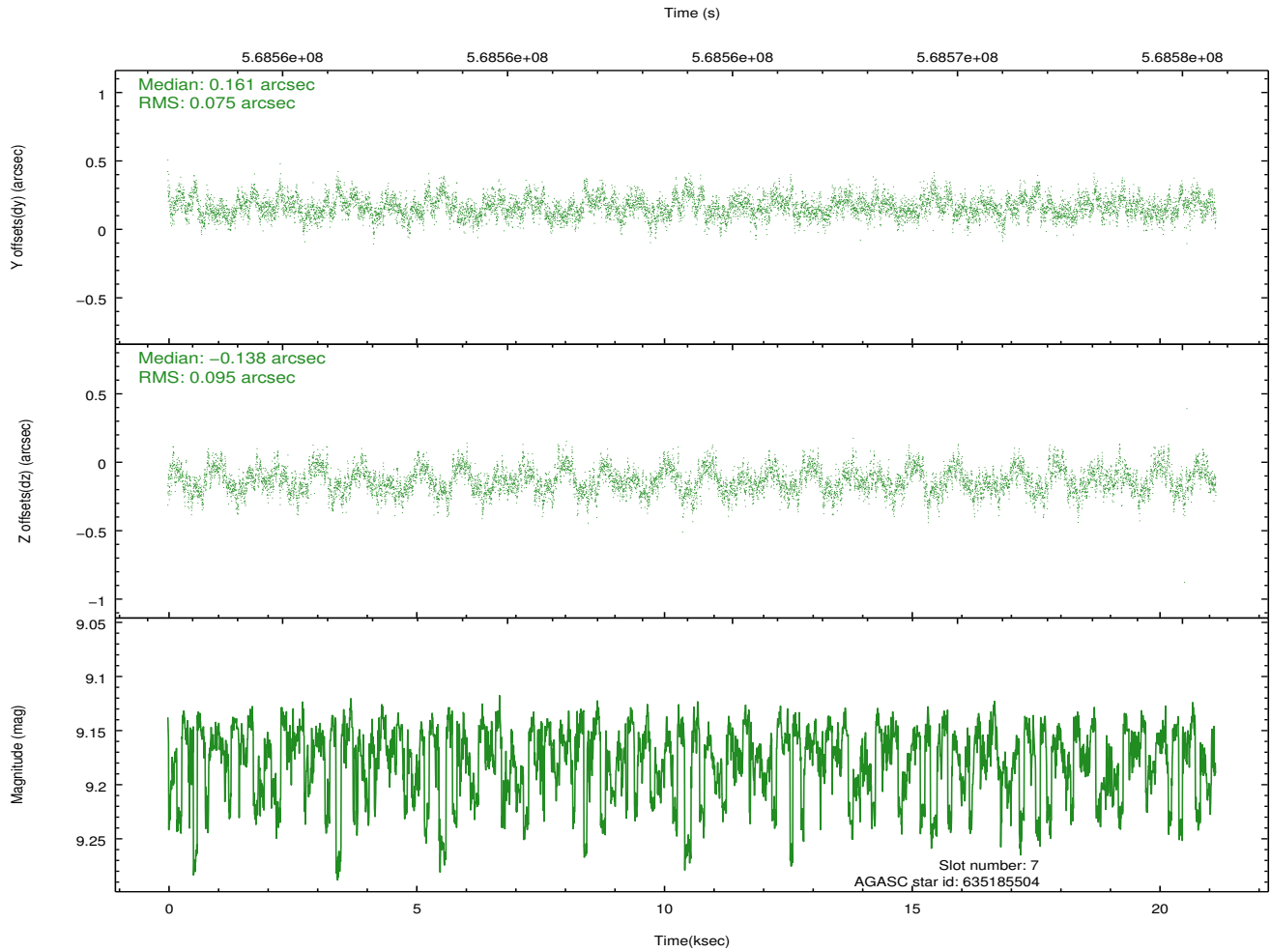
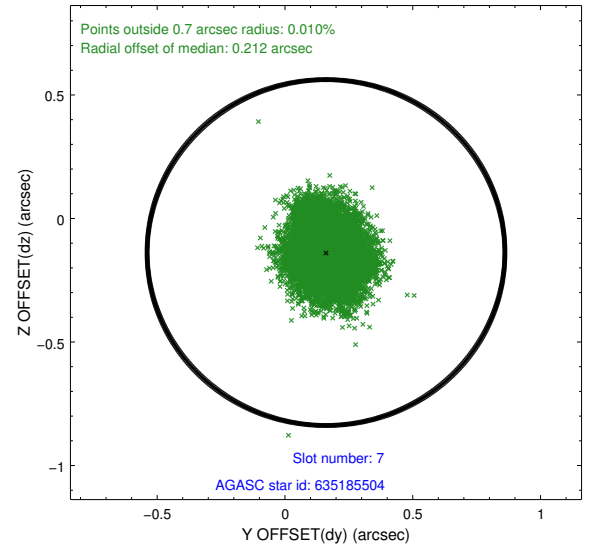
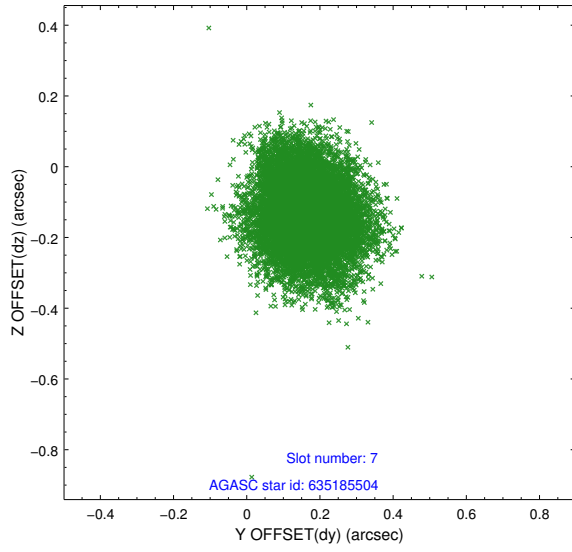
2.4.3 Slot 5



2.4.4 Slot 6

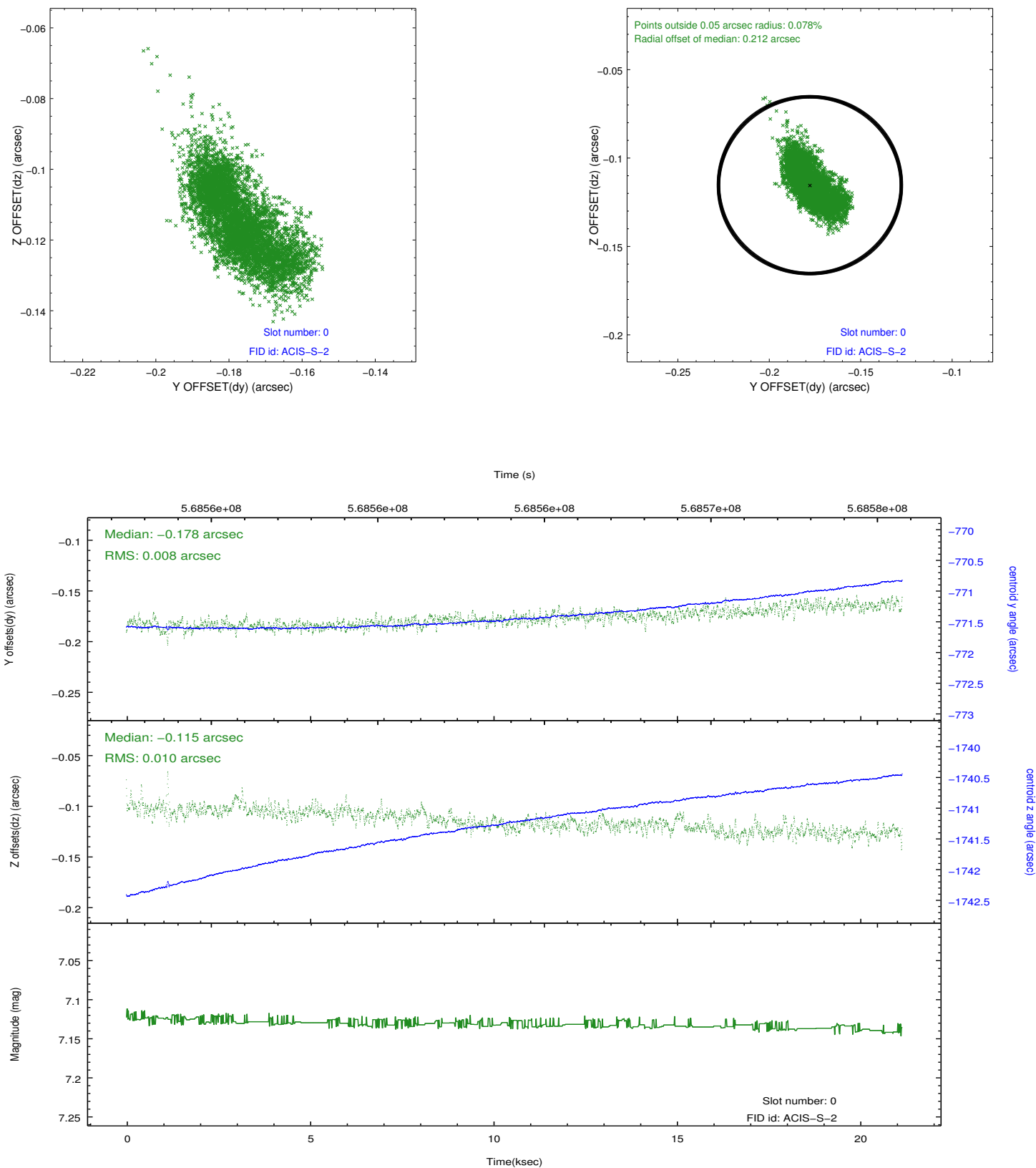


2.4.5 Slot 7

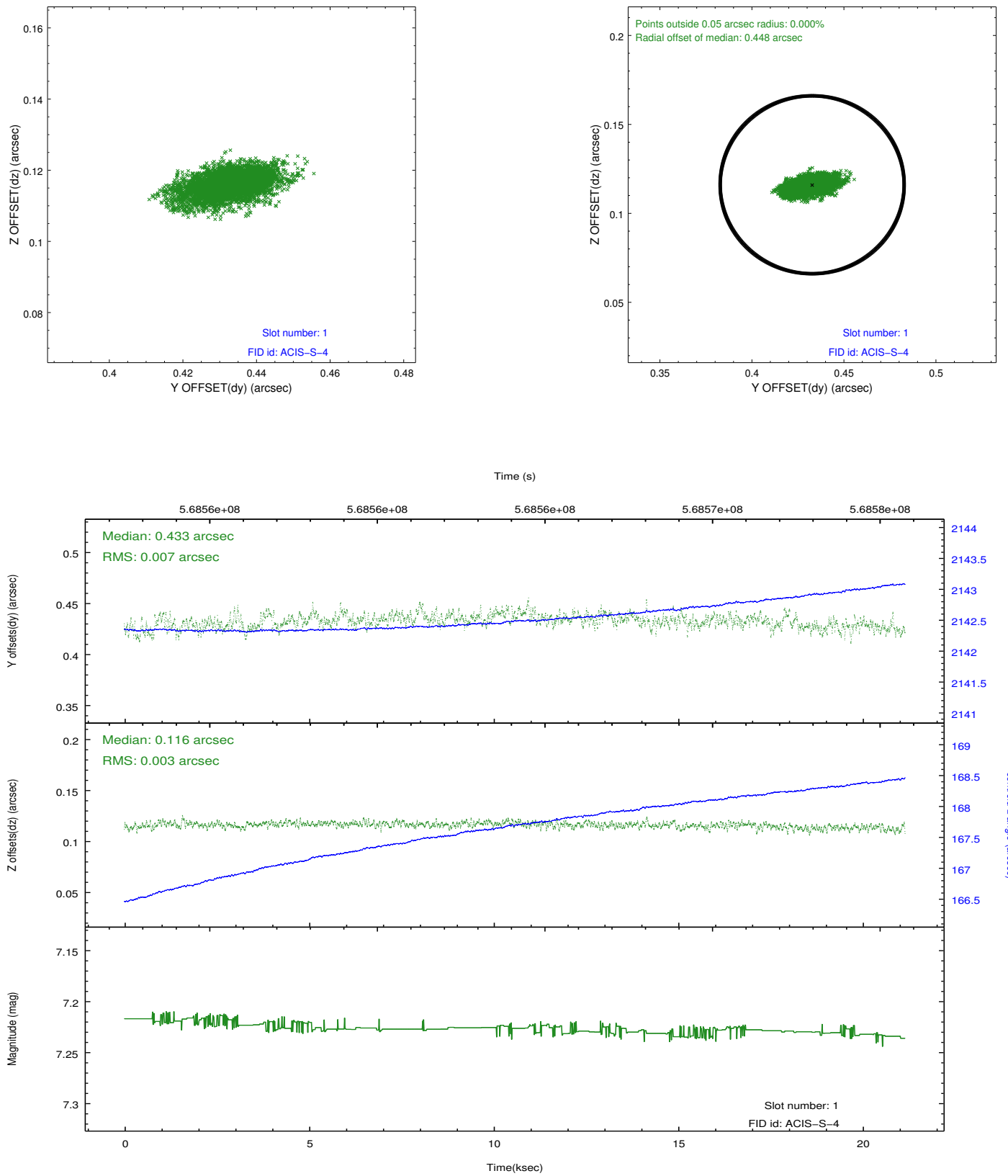


2.5 FID Slots

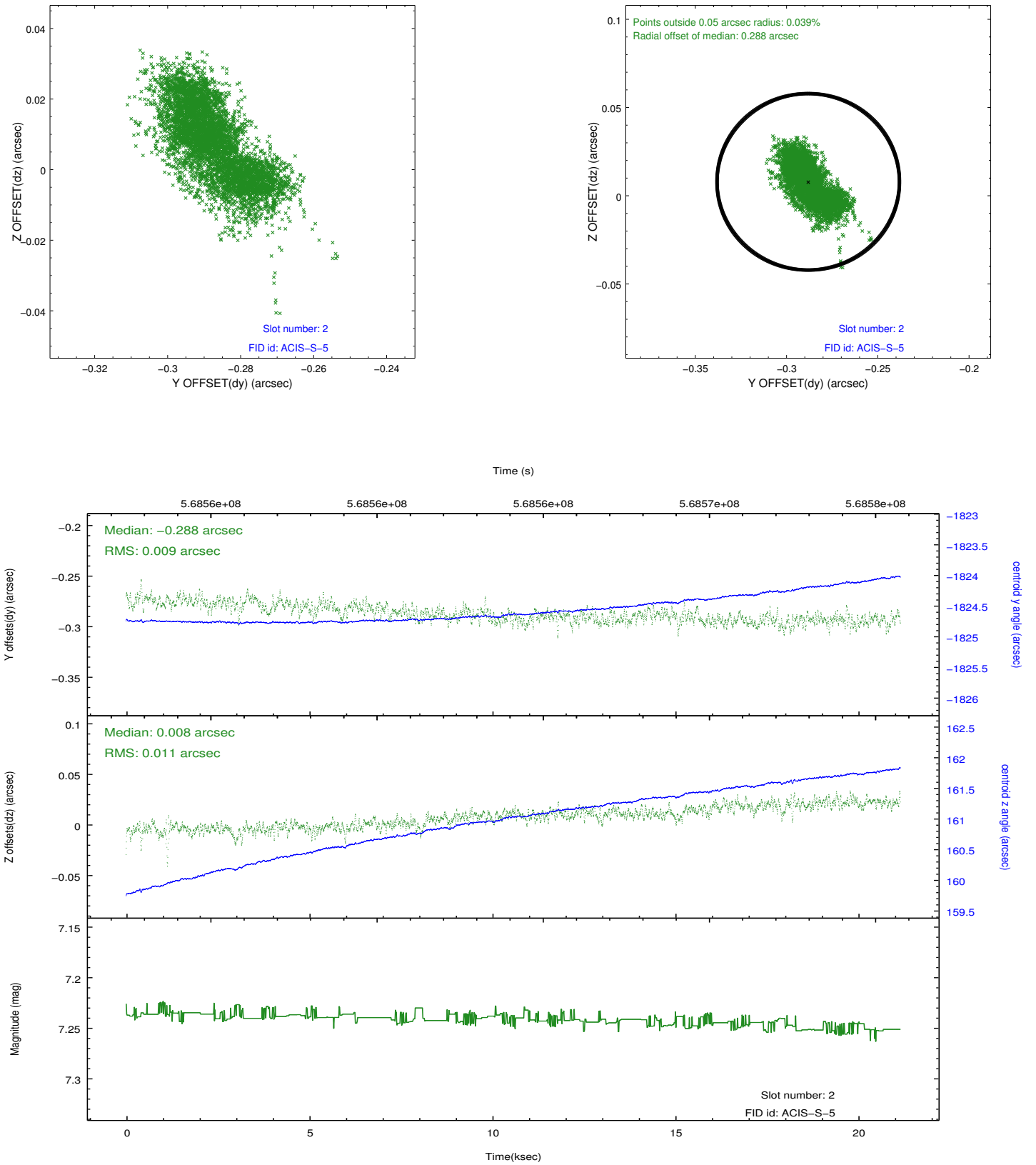
2.5.1 Slot 0



2.5.2 Slot 1



2.5.3 Slot 2



A Summary

A.1 Status

V&V Scientist	Joy Nichols
V&V Date (YYYY-MM-DD)	2016.01.08
V&V Edition	1
V&V Disposition and Status	OK
V&V Charge Time	20.772508872151

A.2 Comments