

V&V Reference Report

L2 ASCDS Version : 10.4.2.1

Observation 18635 - L2 Version 1
Chandra X-Ray Center

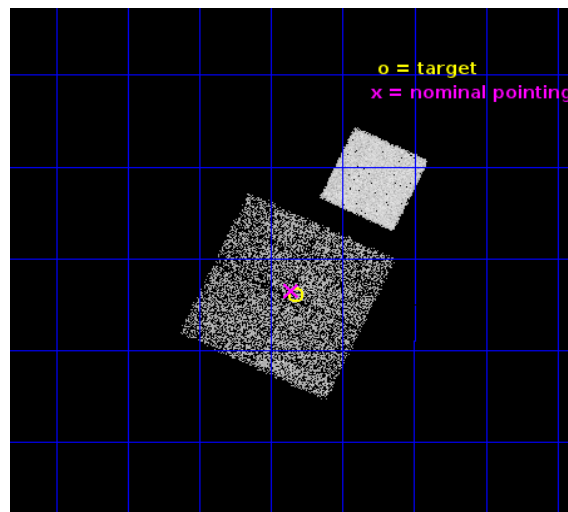
L2 Processing Date : Oct 31 2015

Contents

1	Front	2
2	OBI	3
2.1	OBI	3
2.1.1	Images	3
2.1.2	Bias	3
2.1.3	Parameters	4
2.1.4	Events	4
2.2	Compared Parameters	5
2.3	Aspect	6
2.4	Star Slots	9
2.4.1	Slot 3	9
2.4.2	Slot 4	10
2.4.3	Slot 5	11
2.4.4	Slot 6	12
2.4.5	Slot 7	13
2.5	FID Slots	14
2.5.1	Slot 0	14
2.5.2	Slot 1	15
2.5.3	Slot 2	16
A	Summary	17
A.1	Status	17
A.2	Comments	17

1 Front

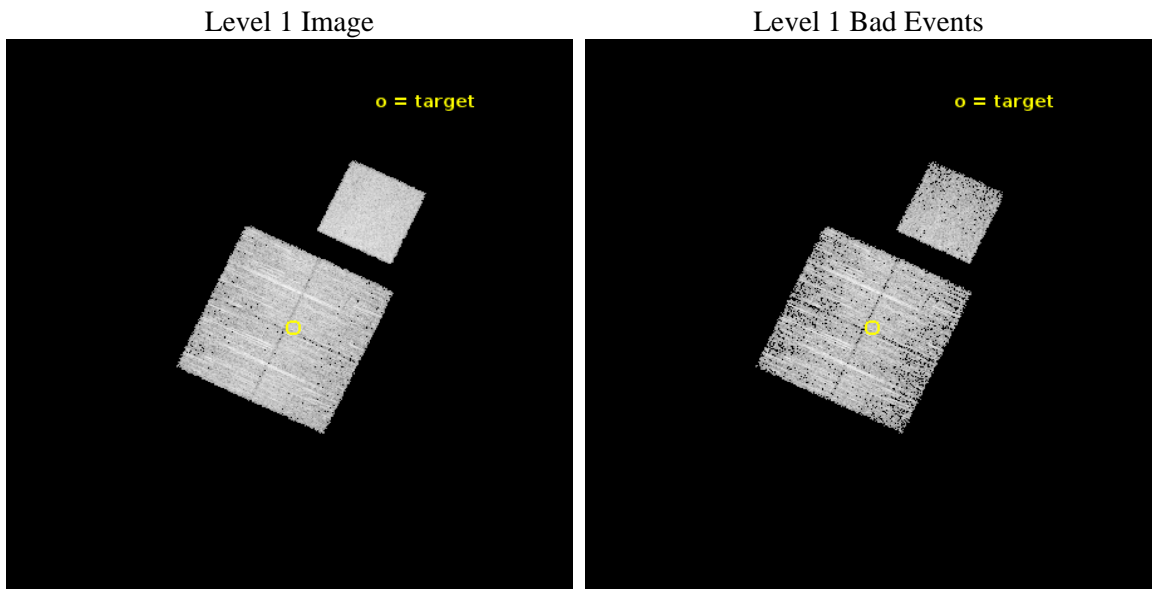
seq_num	801643	Sequence number
obs_id	18635	Observation id
title	Lensing Calibration of the Evolution of Cluster Scaling Relations for eROSITA	Proposal title
observer	Dr. Peter Predehl	Principal investigator
object	CODEX 55604	Source name
dtcycle	0	
cycle	P	events from which exps? Prim/Second/Both
ra_targ	41.332083	Observer's specified target RA [deg]
dec_targ	-0.565333	Observer's specified target Dec [deg]
ra_nom	41.339305784581	Nominal RA [deg]
dec_nom	-0.55834983514079	Nominal Dec [deg]
roll_nom	25.379698197836	Nominal Roll [deg]
revision	1	Processing version of data
ontime	6060.4590564966	Sum of GTIs [s]
livetime	5981.2746972784	Livetime [s]
ontime0	6063.6000467539	Sum of GTIs [s]
ontime1	6060.4590564966	Sum of GTIs [s]
ontime2	6063.6000467539	Sum of GTIs [s]
ontime3	6060.4590564966	Sum of GTIs [s]
ontime7	6063.6000467539	Sum of GTIs [s]
l2events	31744	Number of level 2 events



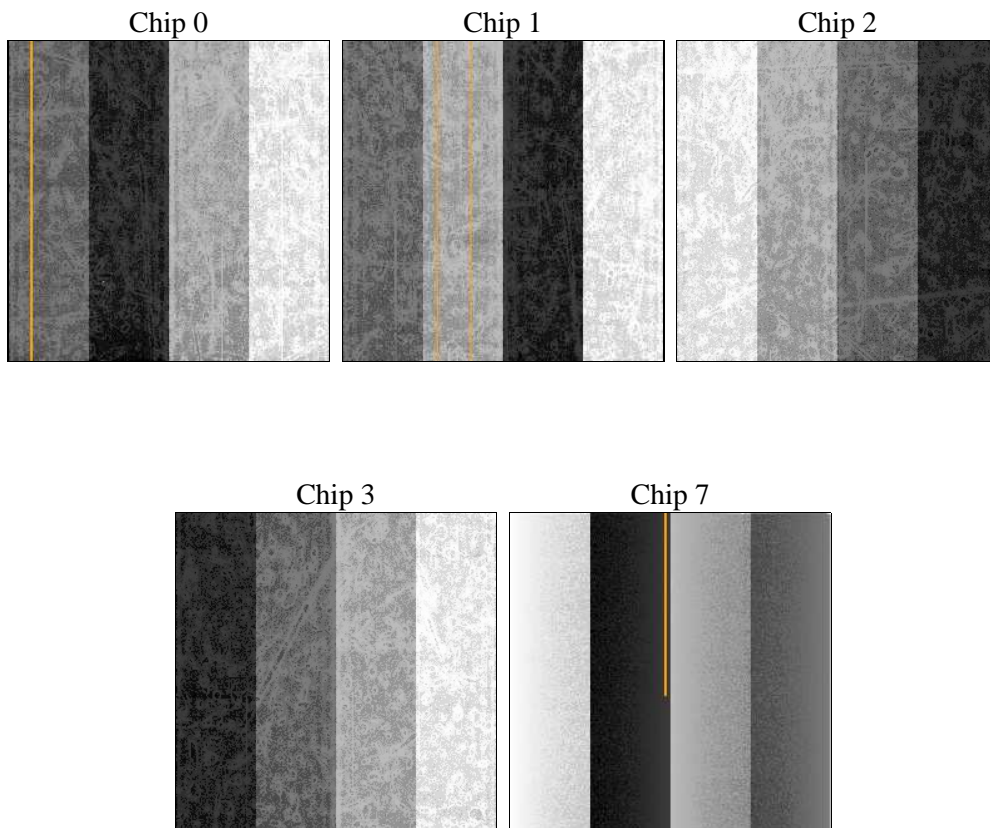
2 OBI

2.1 OBI

2.1.1 Images



2.1.2 Bias



2.1.3 Parameters

obi_num	0	Obi number	sched_exp_time	6000.000000	[s] Scheduled observation exposure time
ascdsver	10.4.2.1	Processing system revision	ontime	6060.4590564966	Sum of GTIs [s]
caldbver	4.6.10a	 	ontime0	6063.6000467539	Sum of GTIs [s]
date	2015-10-31T12:30:52	Date and time of file creation	ontime1	6060.4590564966	Sum of GTIs [s]
revision	1	Processing version of data	ontime2	6063.6000467539	Sum of GTIs [s]
			ontime3	6060.4590564966	Sum of GTIs [s]
			ontime7	6063.6000467539	Sum of GTIs [s]
			l1events	177139	Number of level 1 events

2.1.4 Events

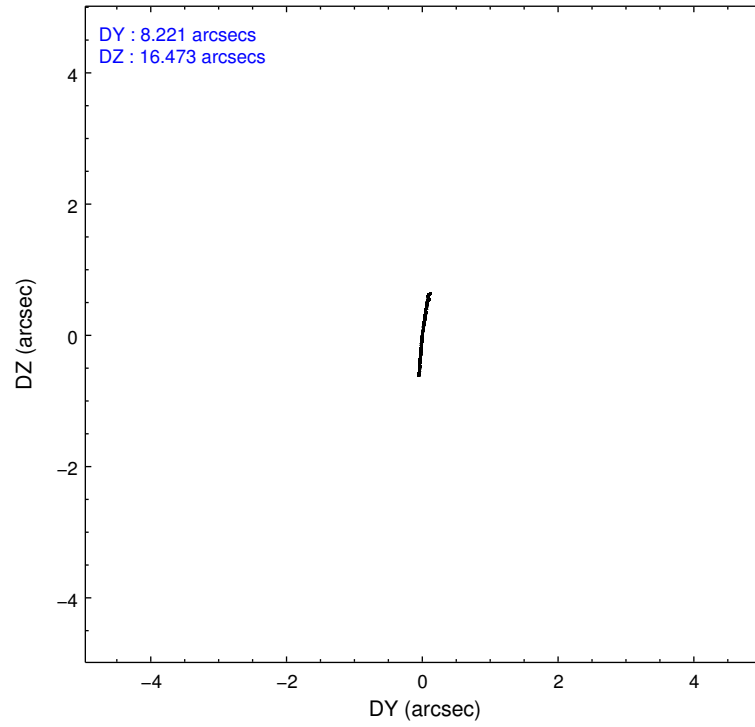
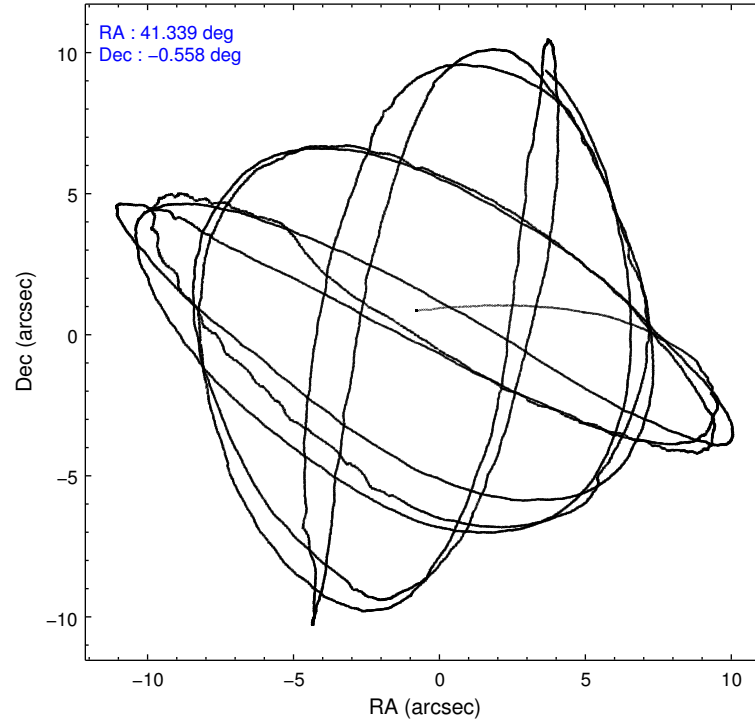
	ccd 0	ccd 1	ccd 2	ccd 3	ccd 7
level 1 events	32996	30502	35429	33283	44929
rejected events	29122	26294	31669	29693	25496
rejected %	88%	86%	89%	89%	56%

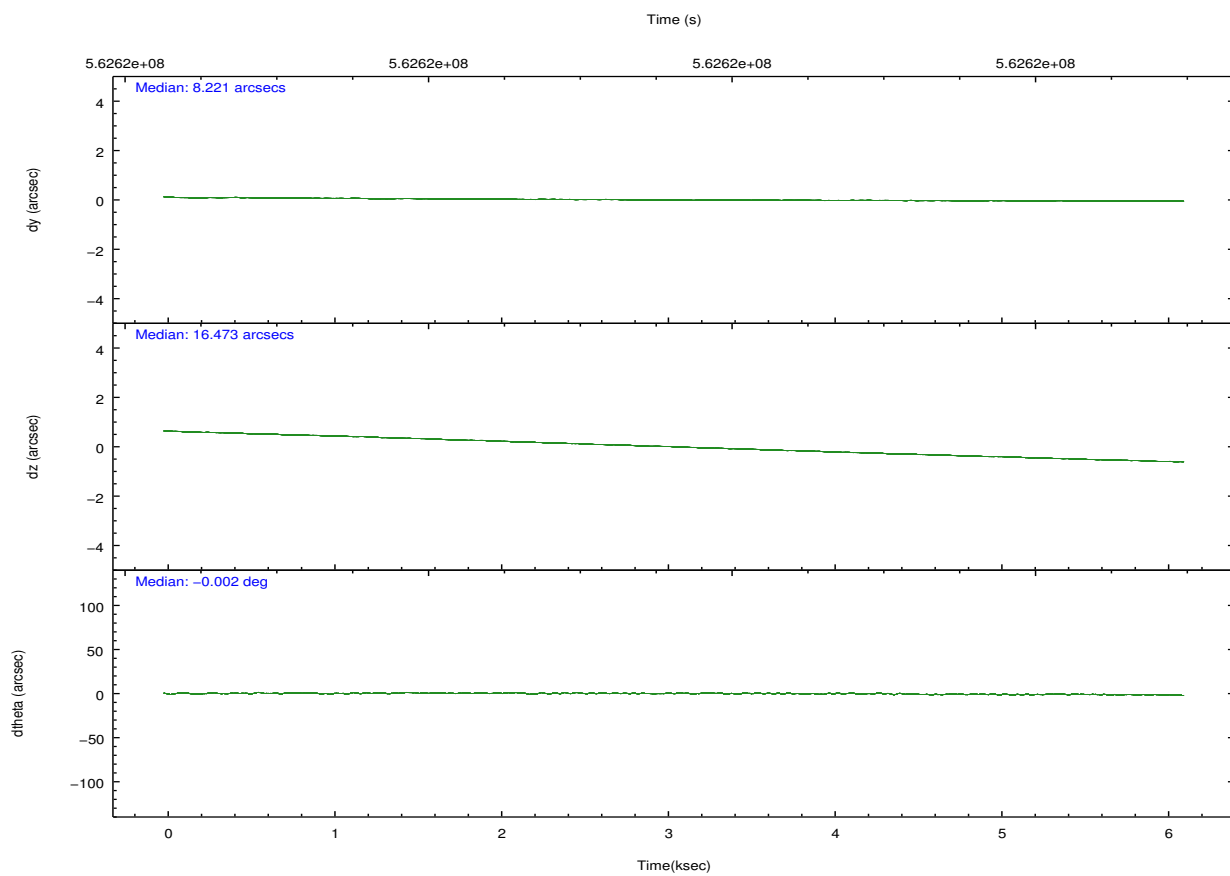
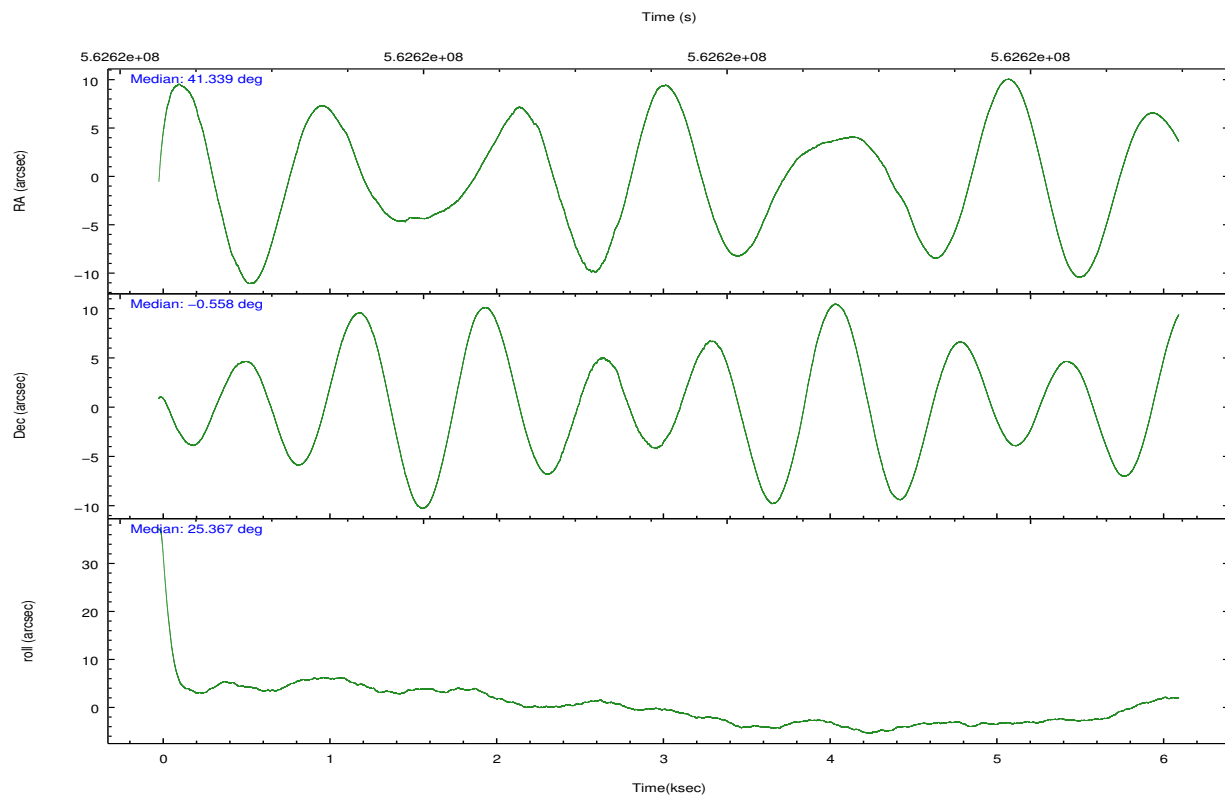
	ccd 0	ccd 1	ccd 2	ccd 3	ccd 7
grade 0 events	1306	1472	1368	1300	1652
	3%	4%	3%	3%	3%
grade 1 events	17	12	12	27	50
	0%	0%	0%	0%	0%
grade 2 events	973	1027	900	799	4095
	2%	3%	2%	2%	9%
grade 3 events	401	393	372	369	1653
	1%	1%	1%	1%	3%
grade 4 events	386	386	385	391	1659
	1%	1%	1%	1%	3%
grade 5 events	1455	1598	1357	1660	4436
	4%	5%	3%	4%	9%
grade 6 events	810	931	736	732	10385
	2%	3%	2%	2%	23%
grade 7 events	27648	24683	30299	28005	20999
	83%	80%	85%	84%	46%

2.2 Compared Parameters

Parameter	Planned	Actual	Parameter	Planned	Actual
Instrument	ACIS	ACIS	Obspar format version number	7	7
Detector	ACIS-01237	ACIS-01237	Obspar file type	PREDICTED	ACTUAL
Grating	NONE	NONE	Obspar update status	NONE	UPDATED
Data mode	VFAINT	VFAINT	CCD I0 on	Y	Y
Observation mode	POINTING	POINTING	CCD I1 on	Y	Y
[deg] Pointing RA	41.323646	41.33930578458138	CCD I2 on	Y	Y
[deg] Pointing Dec	-0.581080	-0.5583498351407943	CCD I3 on	Y	Y
[deg] Pointing Roll	25.170794	25.3796981978364	CCD S0 on	N	N
[mm] SIM focus pos	-0.782348	-0.7809083437167272	CCD S1 on	N	N
[mm] SIM defocus	0	0.001439871863259334	CCD S2 on	N	N
[mm] SIM translation stage pos	-233.592463	-233.5874344608287	CCD S3 on	O1	Y
[mm] SIM translation stage offset	0	-0.005018542100998502	CCD S4 on	N	N
[s] Observation start time (MET)	562616667.184000	562615299.6976	CCD S5 on	N	N
Observation start date	2015-10-30T18:23:19	2015-10-30T18:01:39	Number of optional ACIS chips dropped	0	0
[s] Observation end time (MET)	562622667.184000	562623604.76057	On-chip summing requested	N	N
Observation end date	2015-10-30T20:03:19	2015-10-30T20:20:04	Subarray requested	NONE	NONE
Read mode	TIMED	TIMED	Alternating exposures requested	N	N
			[s] Primary exposure time	0.000000	3.1

2.3 Aspect



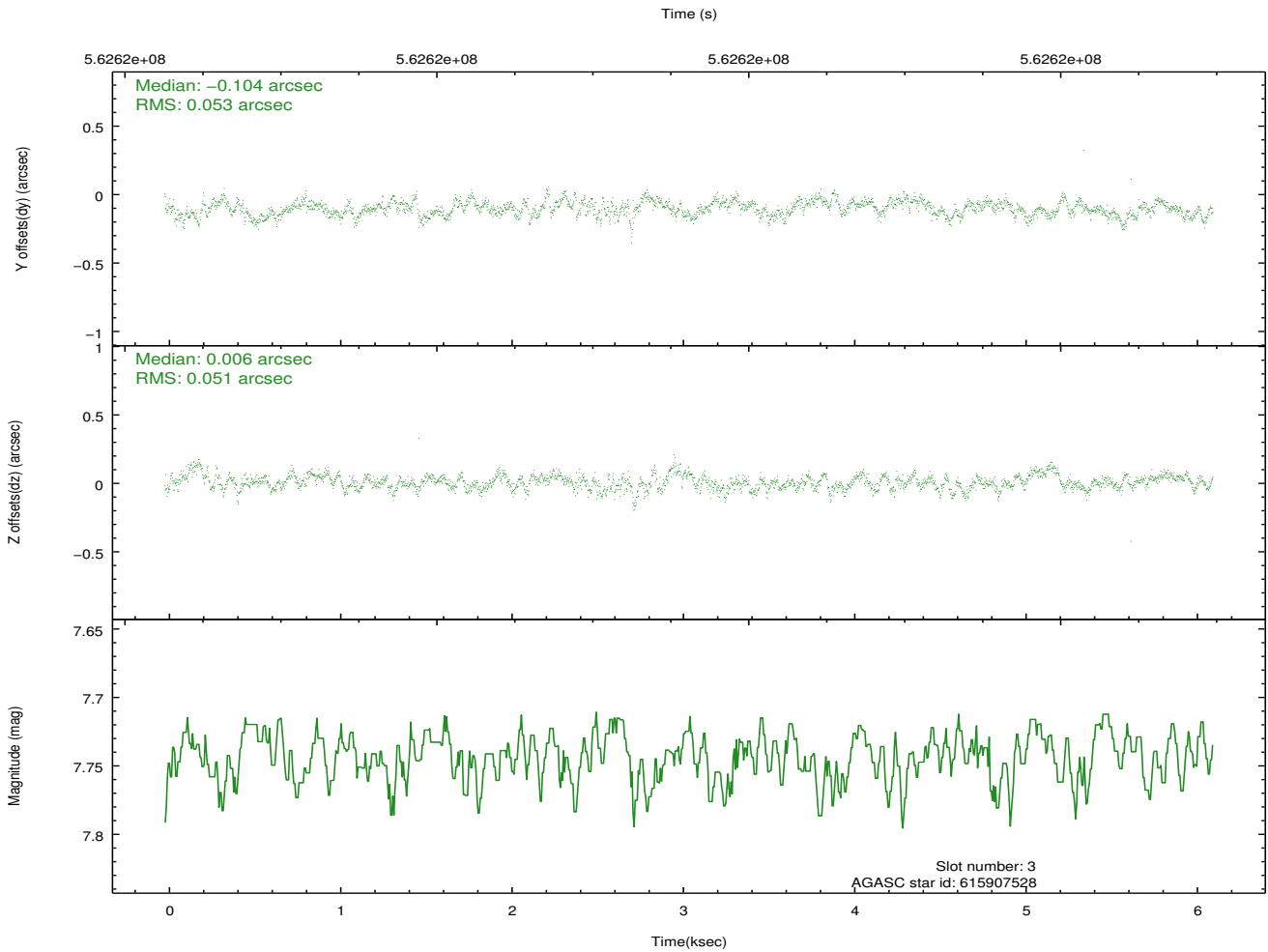
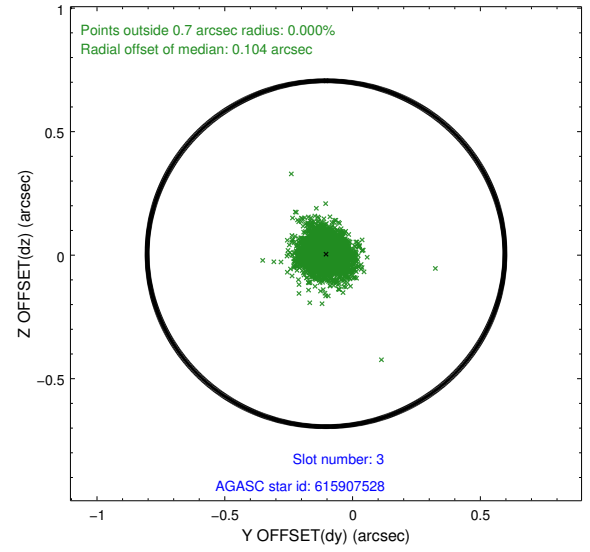
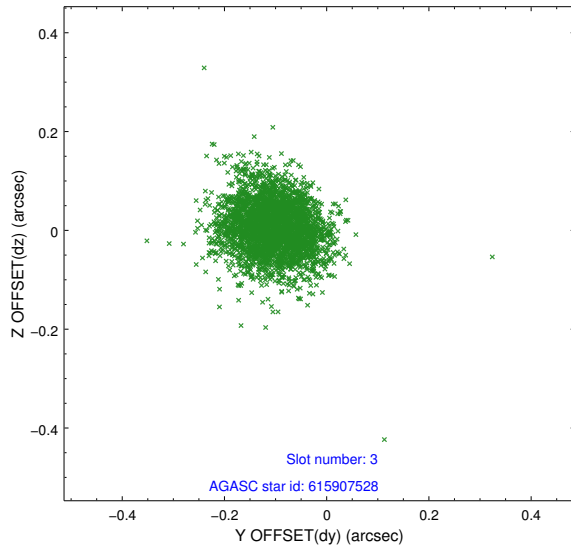


Slot Statistics

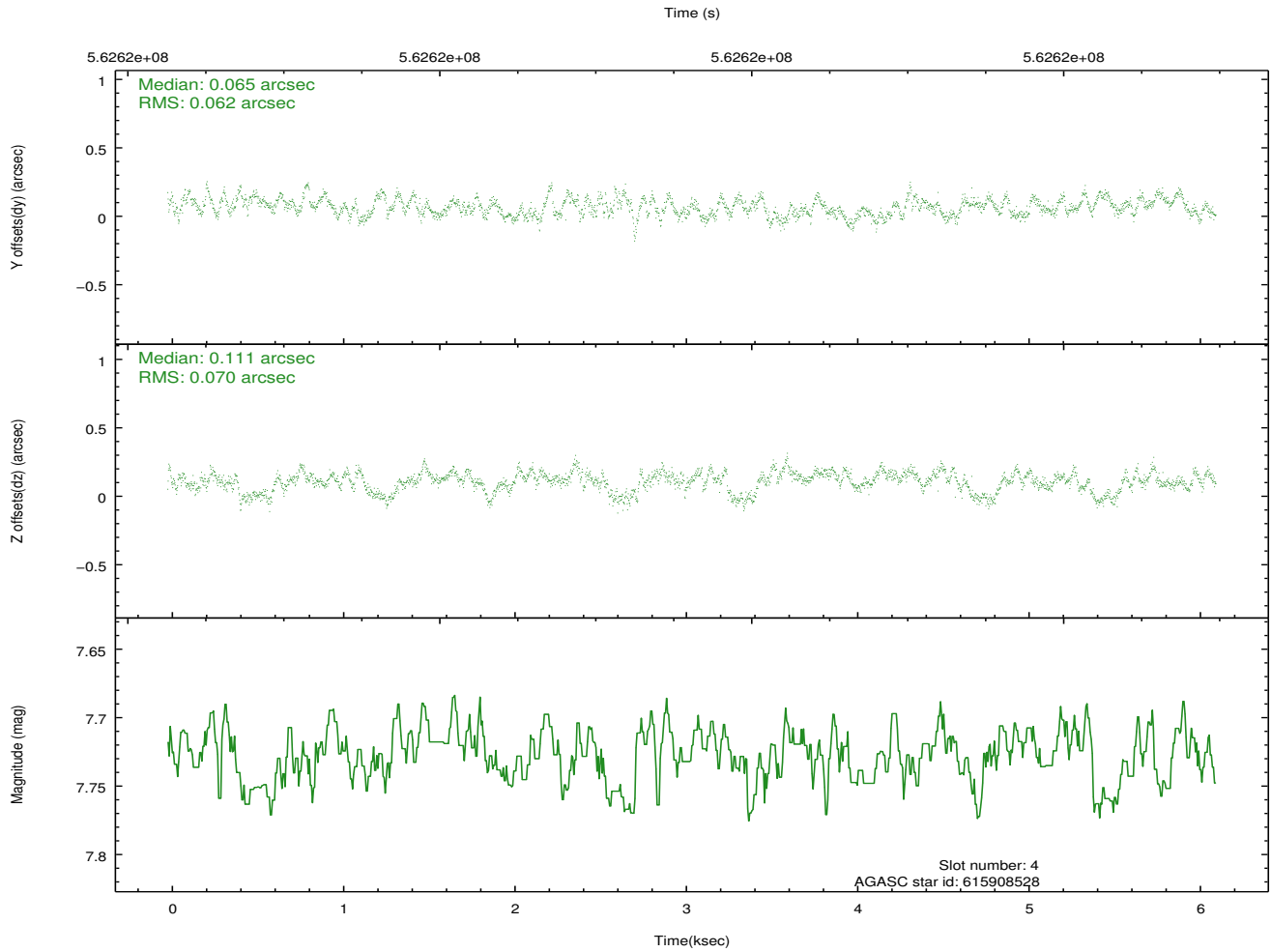
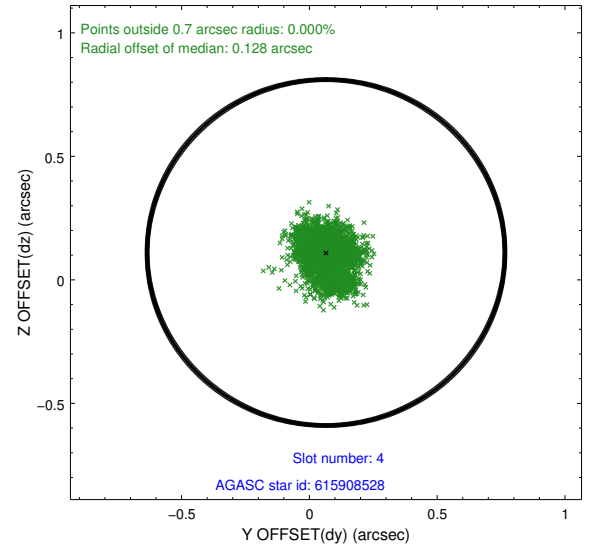
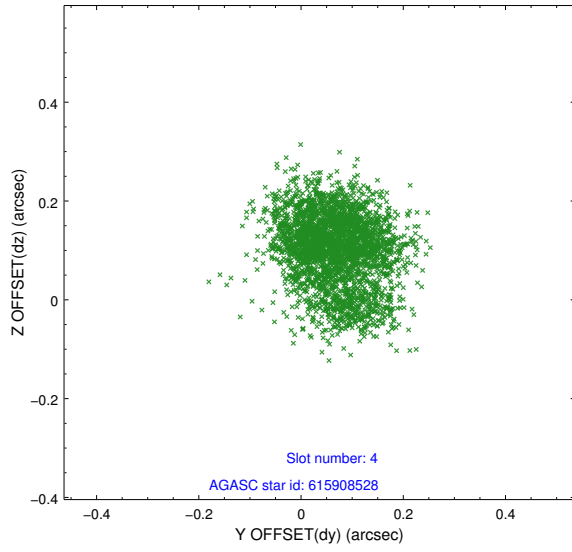
slot	status	used	id	mag	n_pts	med_dy	med_dz	dr1	dr2	ra	dec	mean_y	mean_z
0	FID		ACIS-I-1	7.25	1492	0.105	-0.091	0.015	0.032	0.000000	0.000000	931.51	-840.21
1	FID		ACIS-I-5	7.24	1492	-0.267	0.084	0.009	0.014	0.000000	0.000000	-1816.43	1056.97
2	FID		ACIS-I-6	7.23	1492	0.071	0.078	0.023	0.038	0.000000	0.000000	395.98	1702.55
3	GUIDE	used	615907528	7.74	2985	-0.104	0.006	0.078	0.126	41.252710	-0.191636	364.98	1377.93
4	GUIDE	used	615908528	7.73	2985	0.065	0.111	0.100	0.162	41.178288	-0.846146	-878.87	-640.37
5	GUIDE	used	615909768	9.06	2984	0.161	0.077	0.088	0.145	40.904100	-0.344520	-1005.57	1412.93
6	GUIDE	used	615913168	9.55	2984	0.020	-0.000	0.140	0.229	41.634721	-1.015700	348.21	-1891.43
7	GUIDE	used	615913552	8.68	2983	-0.140	-0.184	0.101	0.165	41.235237	-0.003650	595.86	2016.18

2.4 Star Slots

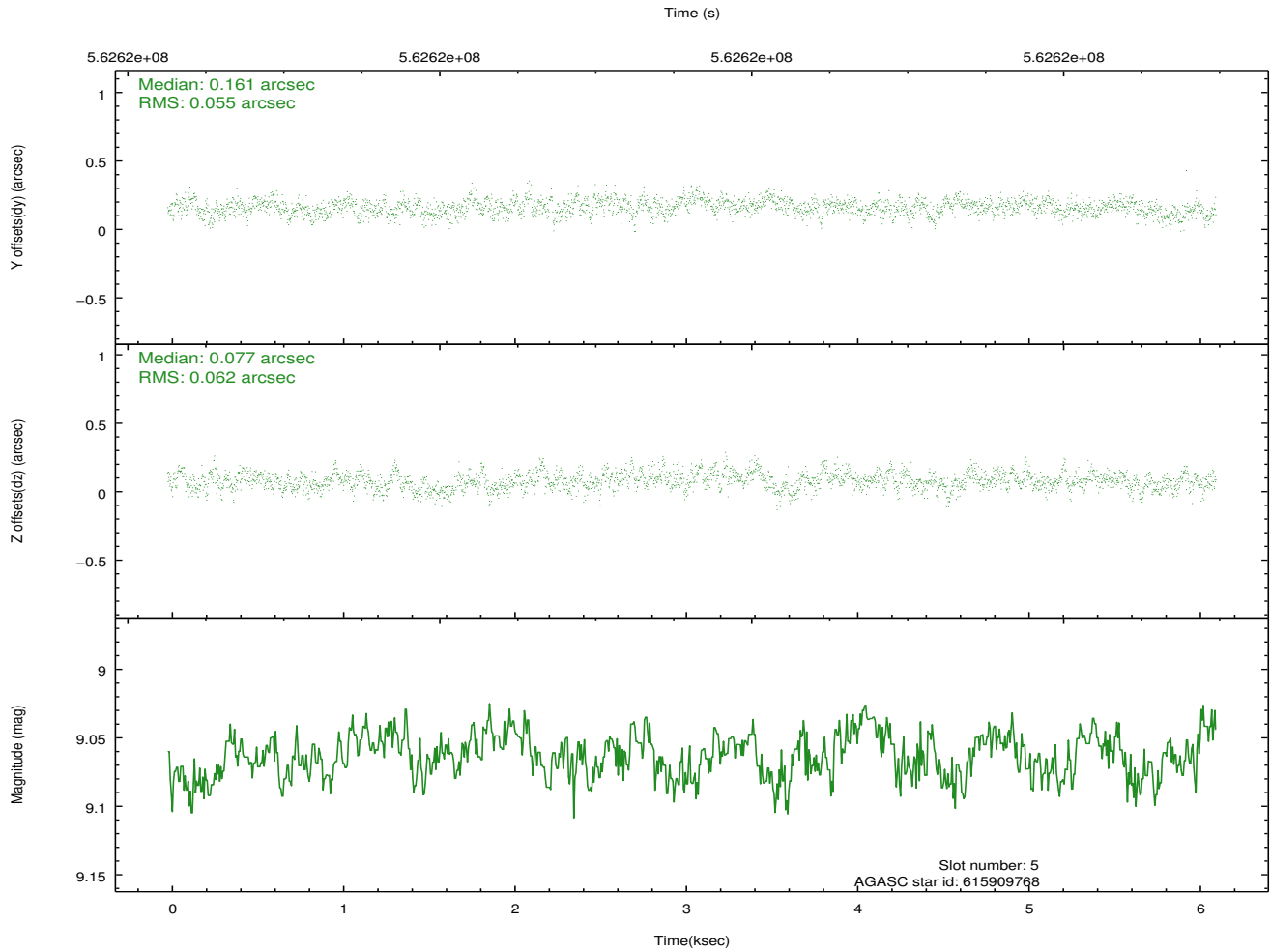
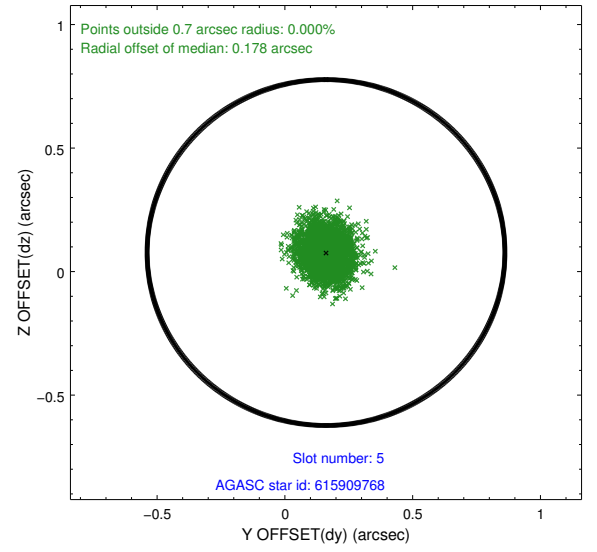
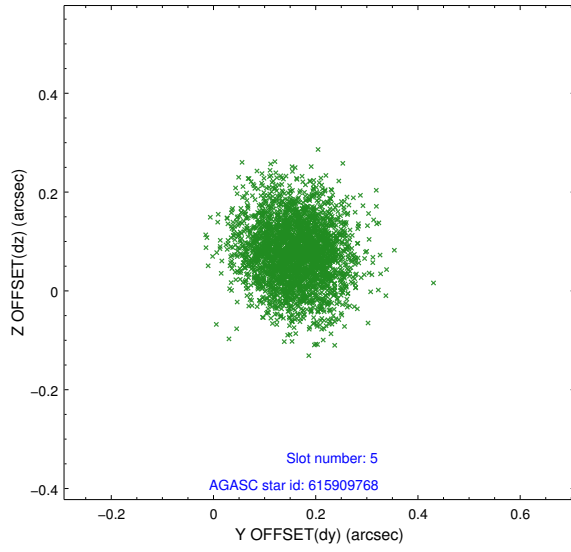
2.4.1 Slot 3



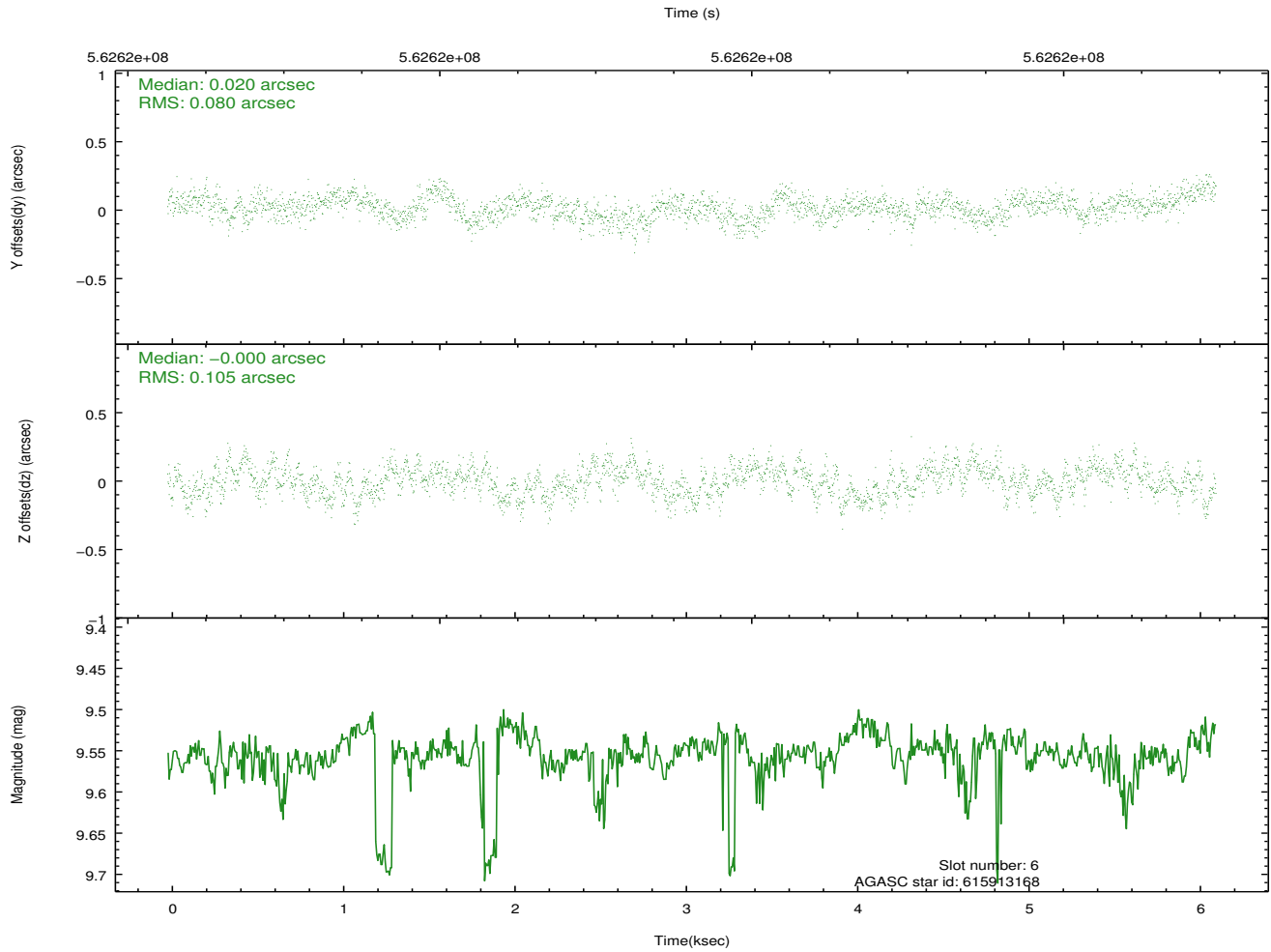
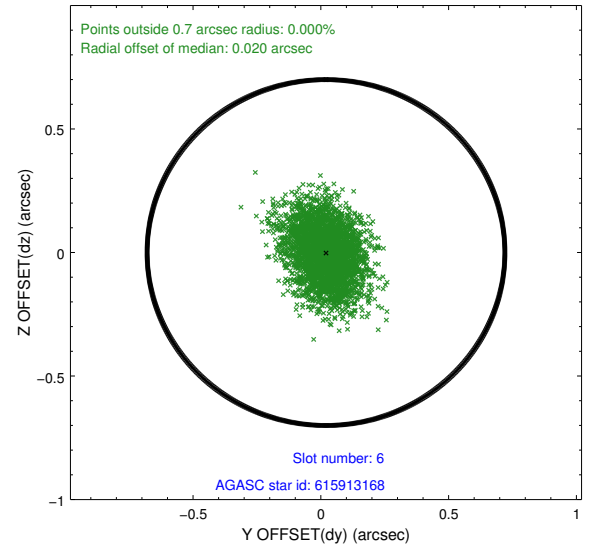
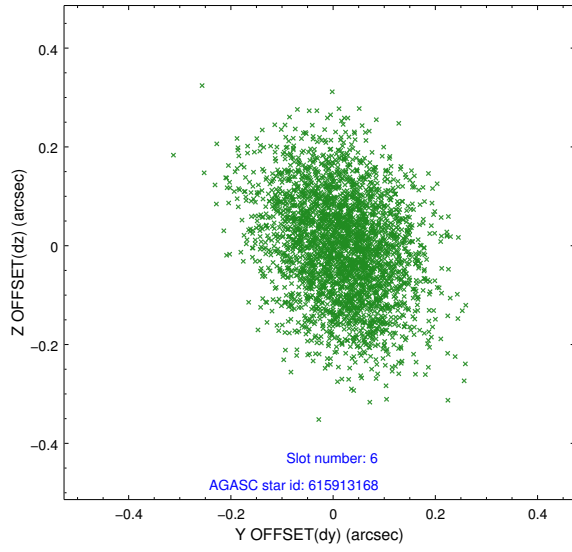
2.4.2 Slot 4



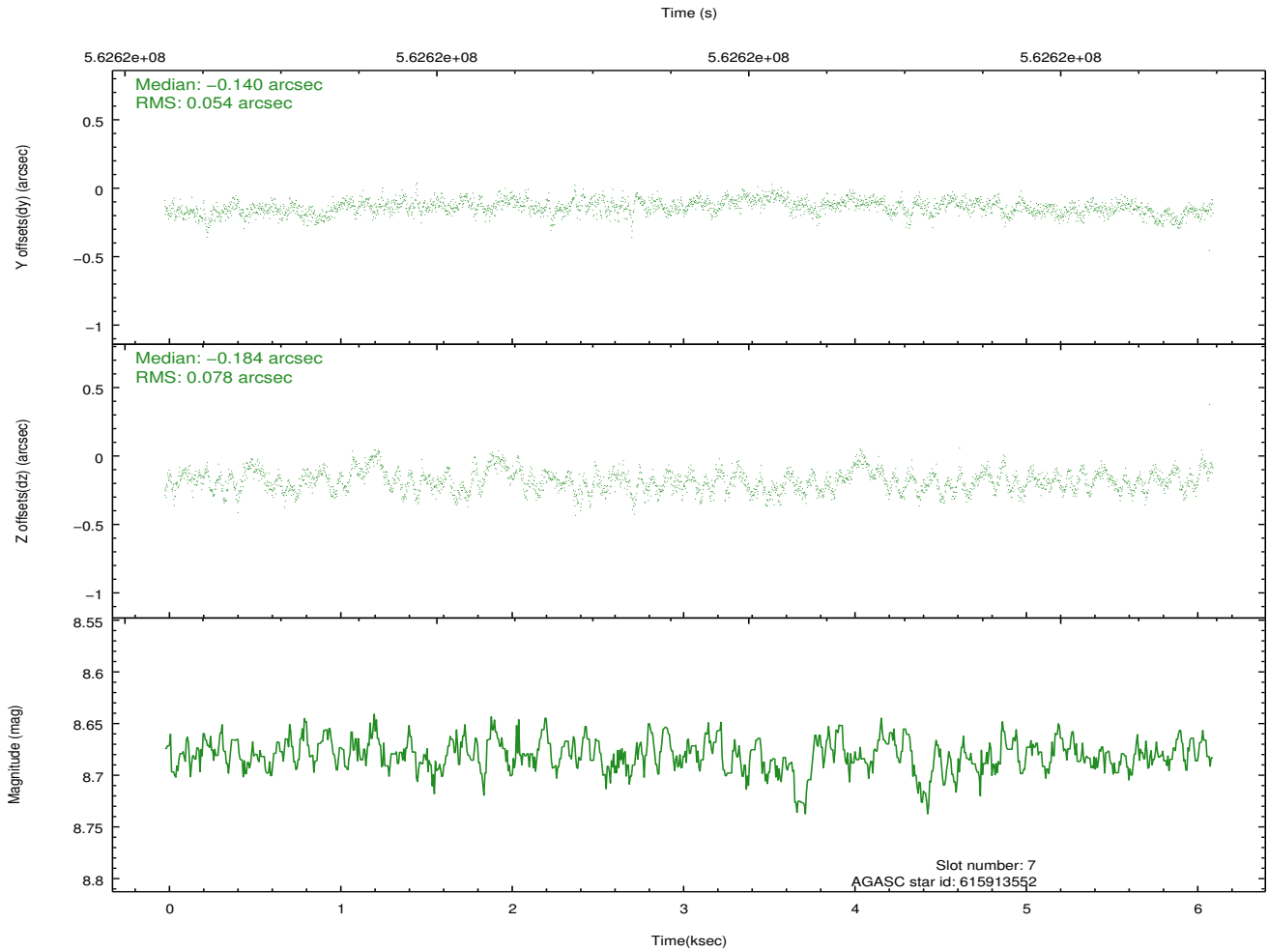
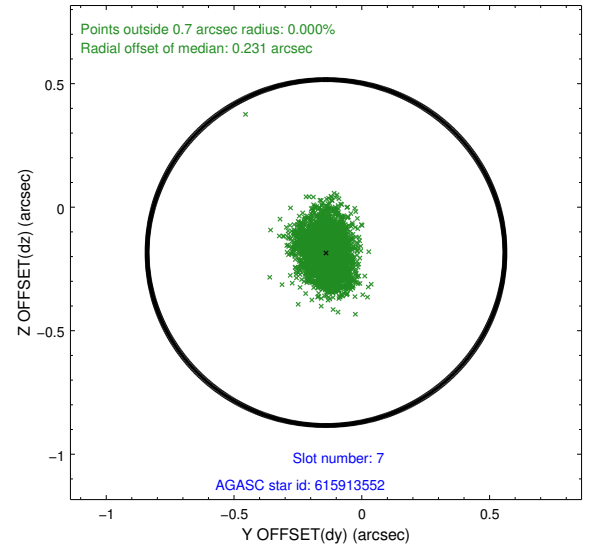
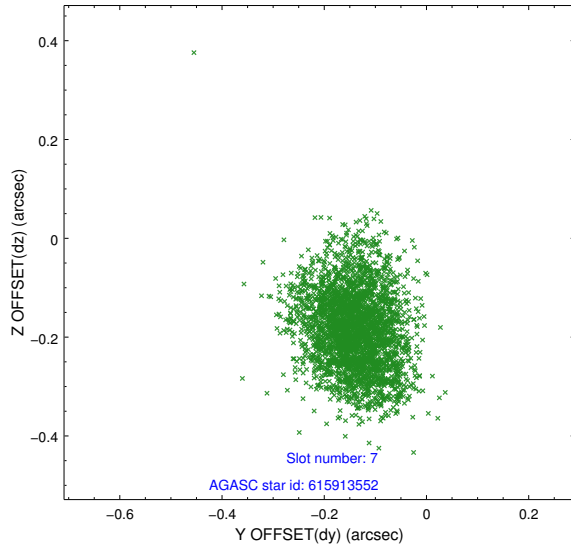
2.4.3 Slot 5



2.4.4 Slot 6

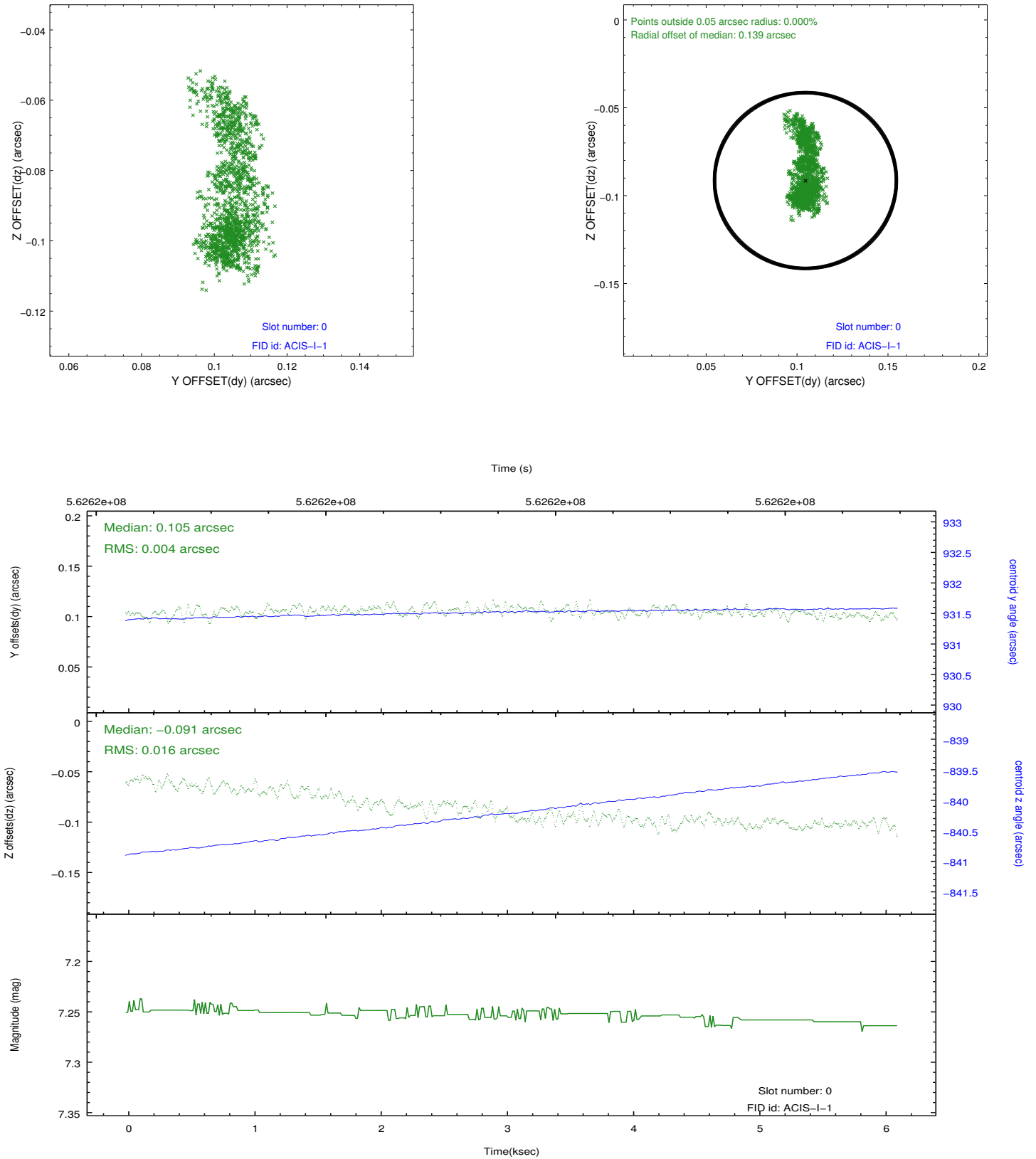


2.4.5 Slot 7

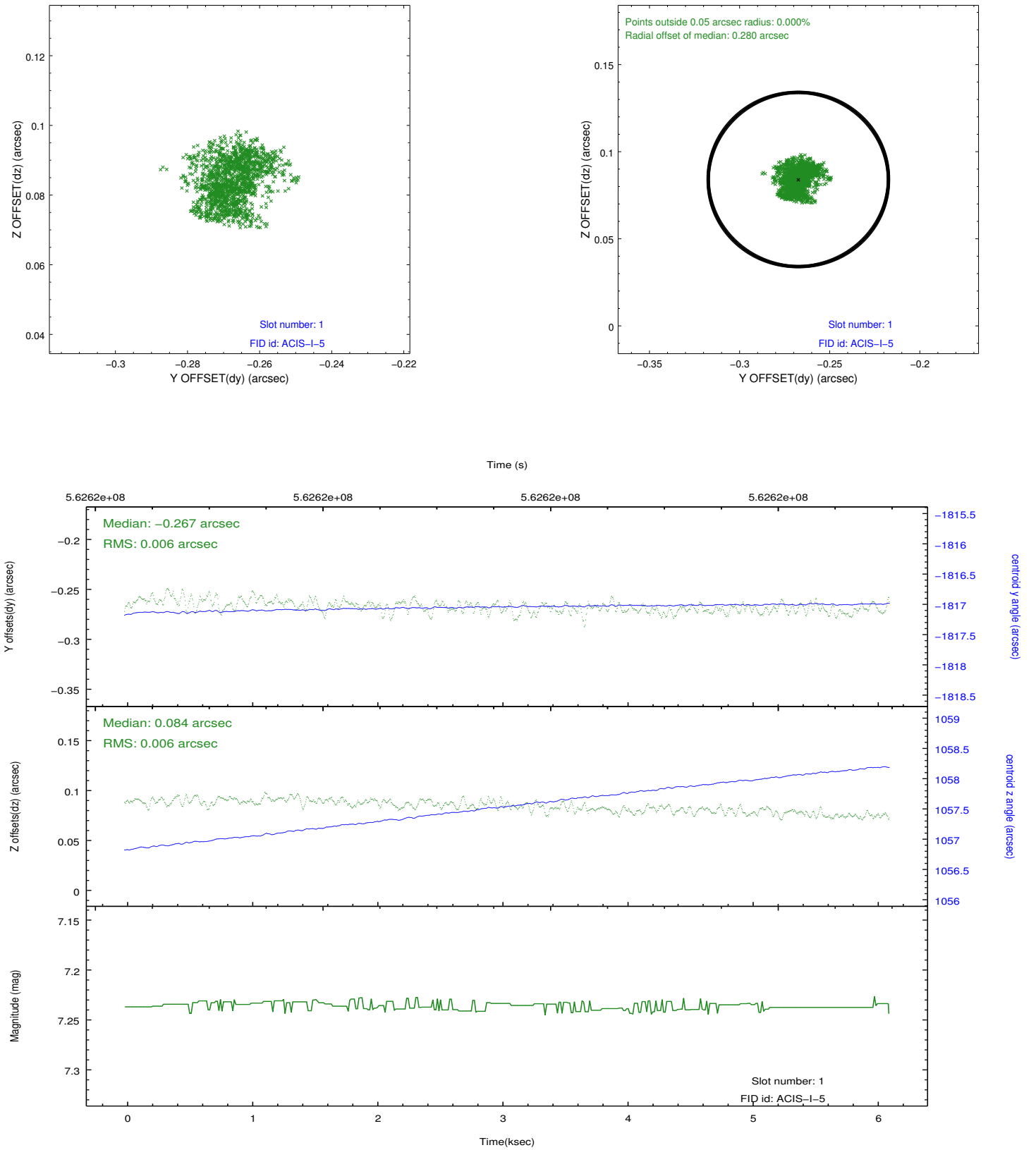


2.5 FID Slots

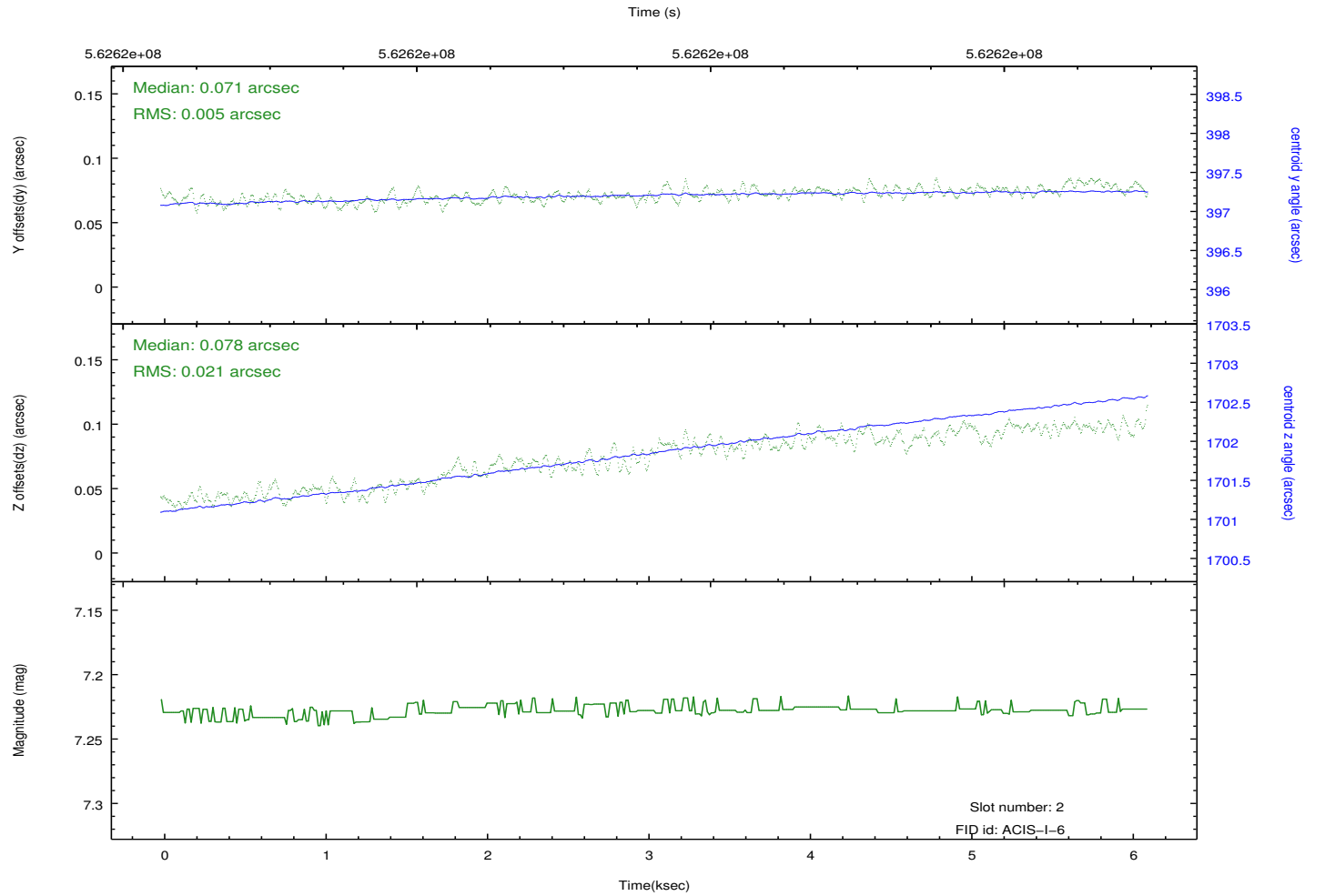
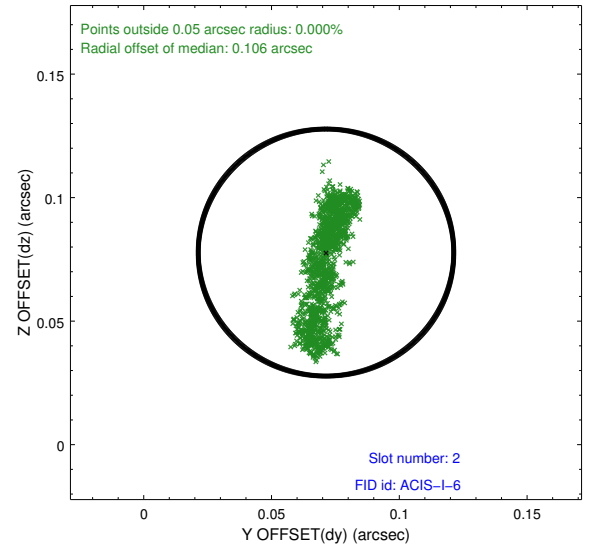
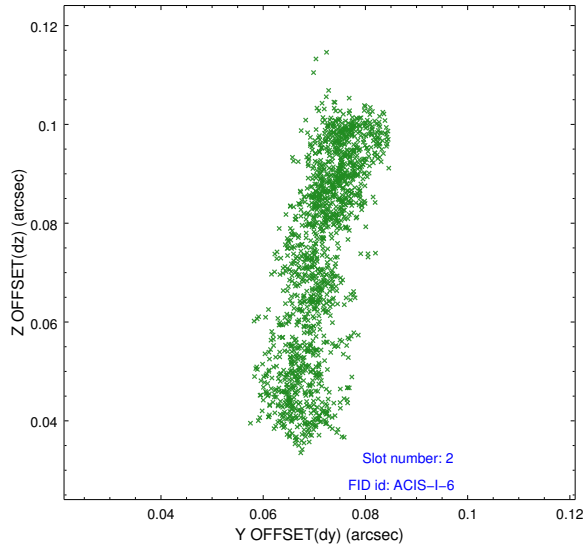
2.5.1 Slot 0



2.5.2 Slot 1



2.5.3 Slot 2



A Summary

A.1 Status

V&V Scientist	Joy Nichols
V&V Date (YYYY-MM-DD)	2015.11.02
V&V Edition	1
V&V Disposition and Status	OK
V&V Charge Time	6.0604590564966

A.2 Comments