

V&V Reference Report

L2 ASCDS Version : 10.5.1.1

Observation 18634 - L2 Version 1
Chandra X-Ray Center

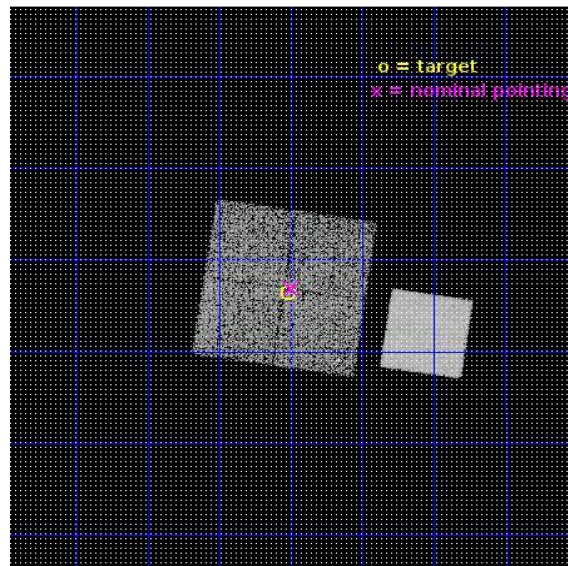
L2 Processing Date : Sep 10 2016

Contents

1	Front	2
2	OBI	3
2.1	OBI	3
2.1.1	Images	3
2.1.2	Bias	3
2.1.3	Parameters	4
2.1.4	Events	4
2.2	Compared Parameters	5
2.3	Aspect	6
2.4	Star Slots	9
2.4.1	Slot 3	9
2.4.2	Slot 4	10
2.4.3	Slot 5	11
2.4.4	Slot 6	12
2.4.5	Slot 7	13
2.5	FID Slots	14
2.5.1	Slot 0	14
2.5.2	Slot 1	15
2.5.3	Slot 2	16
A	Summary	17
A.1	Status	17
A.2	Comments	17

1 Front

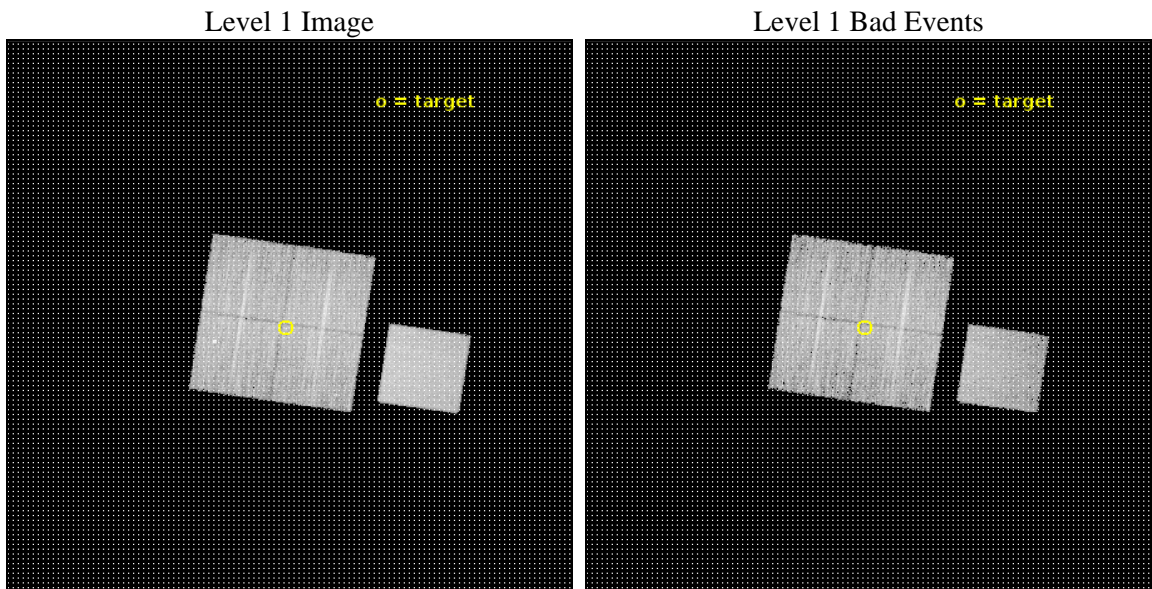
seq_num	801642	Sequence number
obs_id	18634	Observation id
title	Lensing Calibration of the Evolution of Cluster Scaling Relations for eROSITA	Proposal title
observer	Peter Predehl	Principal investigator
object	CODEX 55401	Source name
dtcycle	0	
cycle	P	events from which exps? Prim/Second/Both
ra_targ	27.62875	Observer's specified target RA [deg]
dec_targ	0.606389	Observer's specified target Dec [deg]
ra_nom	27.623907806906	Nominal RA [deg]
dec_nom	0.61410587517048	Nominal Dec [deg]
roll_nom	98.528172066067	Nominal Roll [deg]
revision	1	Processing version of data
ontime	11060.535911083	Sum of GTIs [s]
livetime	10916.021866757	Livetime [s]
ontime0	11057.27181077	Sum of GTIs [s]
ontime1	11057.312850833	Sum of GTIs [s]
ontime2	11060.49487102	Sum of GTIs [s]
ontime3	11060.535911083	Sum of GTIs [s]
ontime7	11060.576951027	Sum of GTIs [s]
l2events	65982	Number of level 2 events



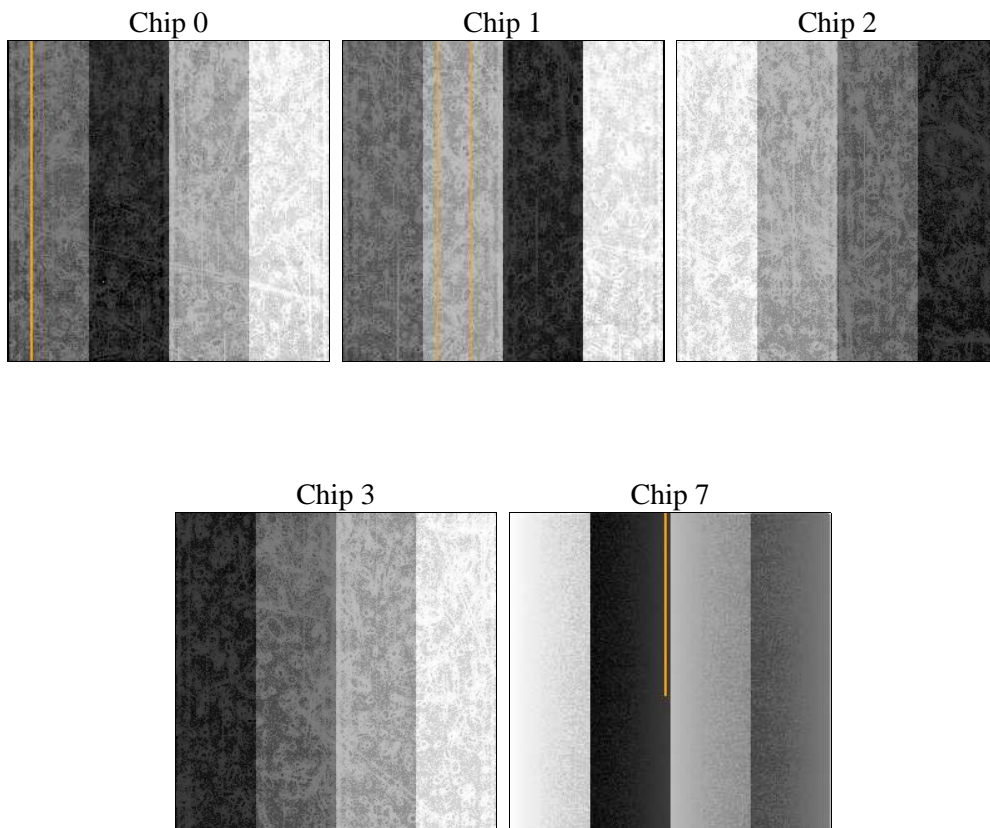
2 OBI

2.1 OBI

2.1.1 Images



2.1.2 Bias



2.1.3 Parameters

obi_num	2	Obi number	sched_exp_time	11000.000000	[s] Scheduled observation exposure time
ascdsver	10.5.1.1	Processing system revision	ontime	11060.535911083	Sum of GTIs [s]
caldbver	4.7.2	 	ontime0	11057.27181077	Sum of GTIs [s]
date	2016-09-10T16:14:00	Date and time of file creation	ontime1	11057.312850833	Sum of GTIs [s]
revision	1	Processing version of data	ontime2	11060.49487102	Sum of GTIs [s]
			ontime3	11060.535911083	Sum of GTIs [s]
			ontime7	11060.576951027	Sum of GTIs [s]
			l1events	364539	Number of level 1 events

2.1.4 Events

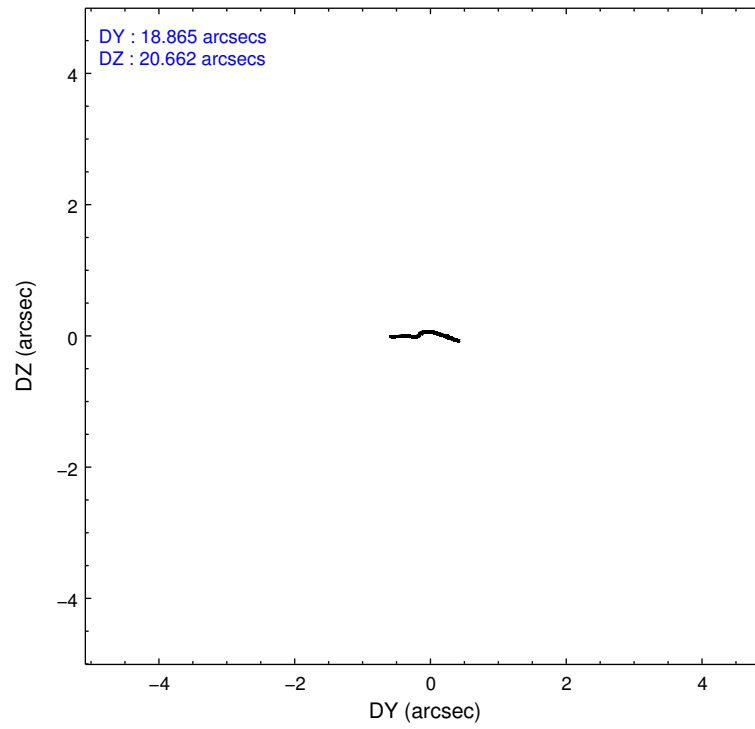
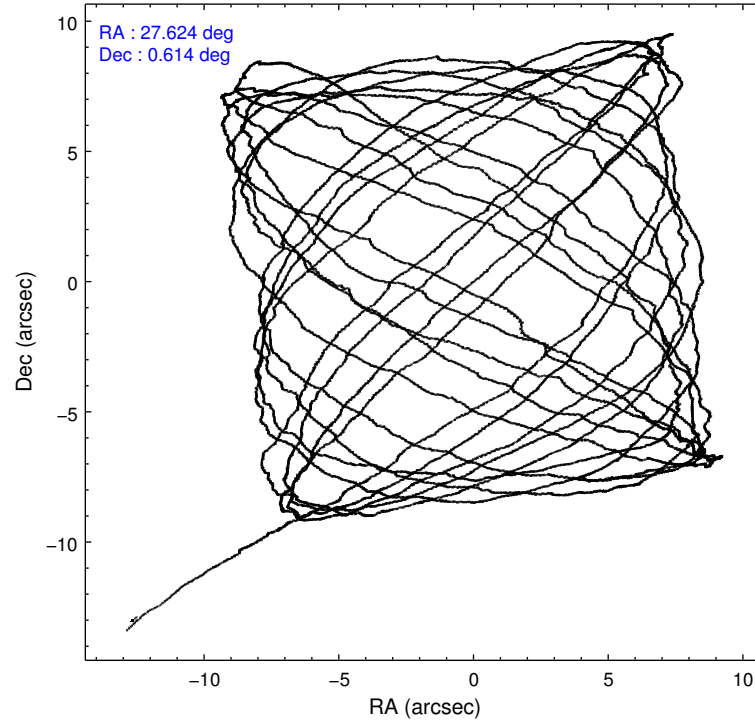
	ccd 0	ccd 1	ccd 2	ccd 3	ccd 7
level 1 events	65219	68326	71388	67158	92448
rejected events	57046	58814	63746	59423	52256
rejected %	87%	86%	89%	88%	56%

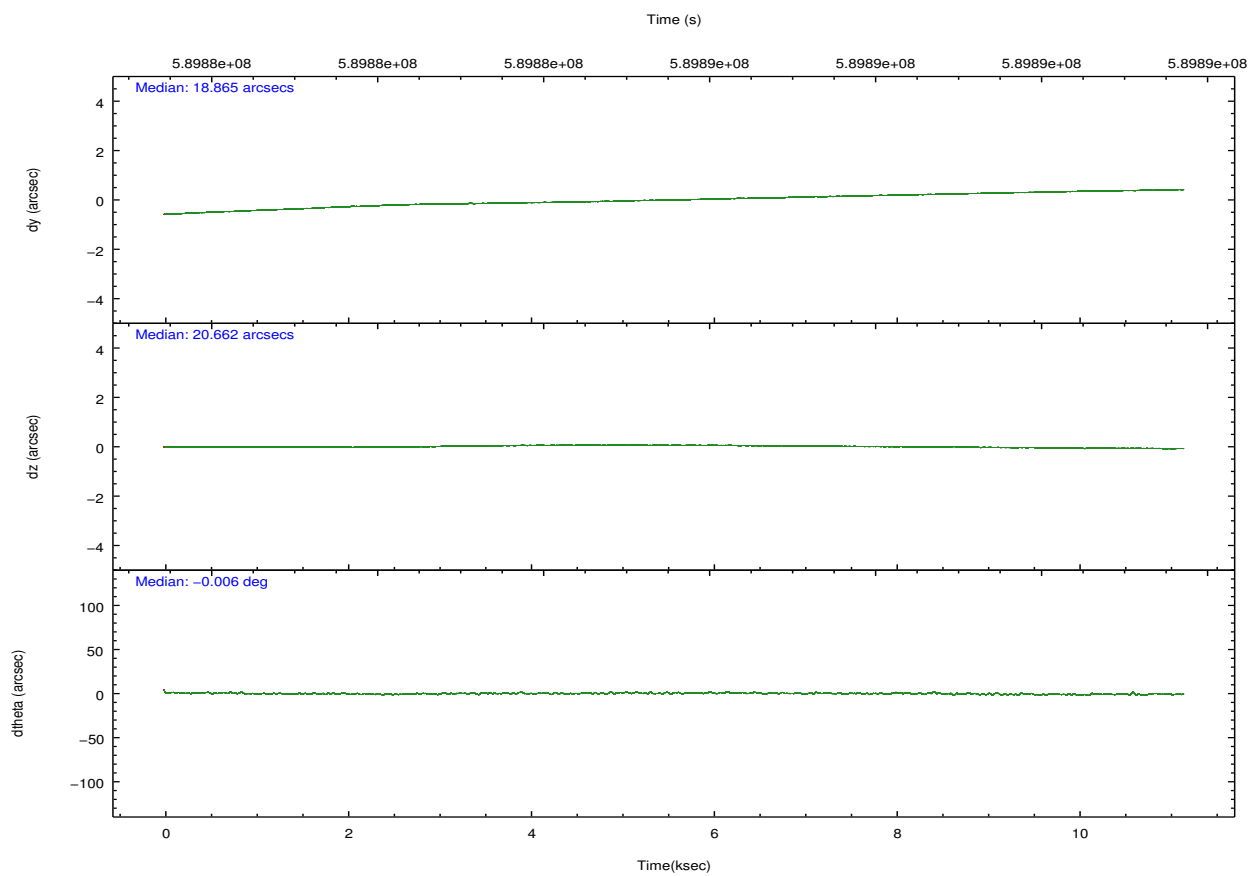
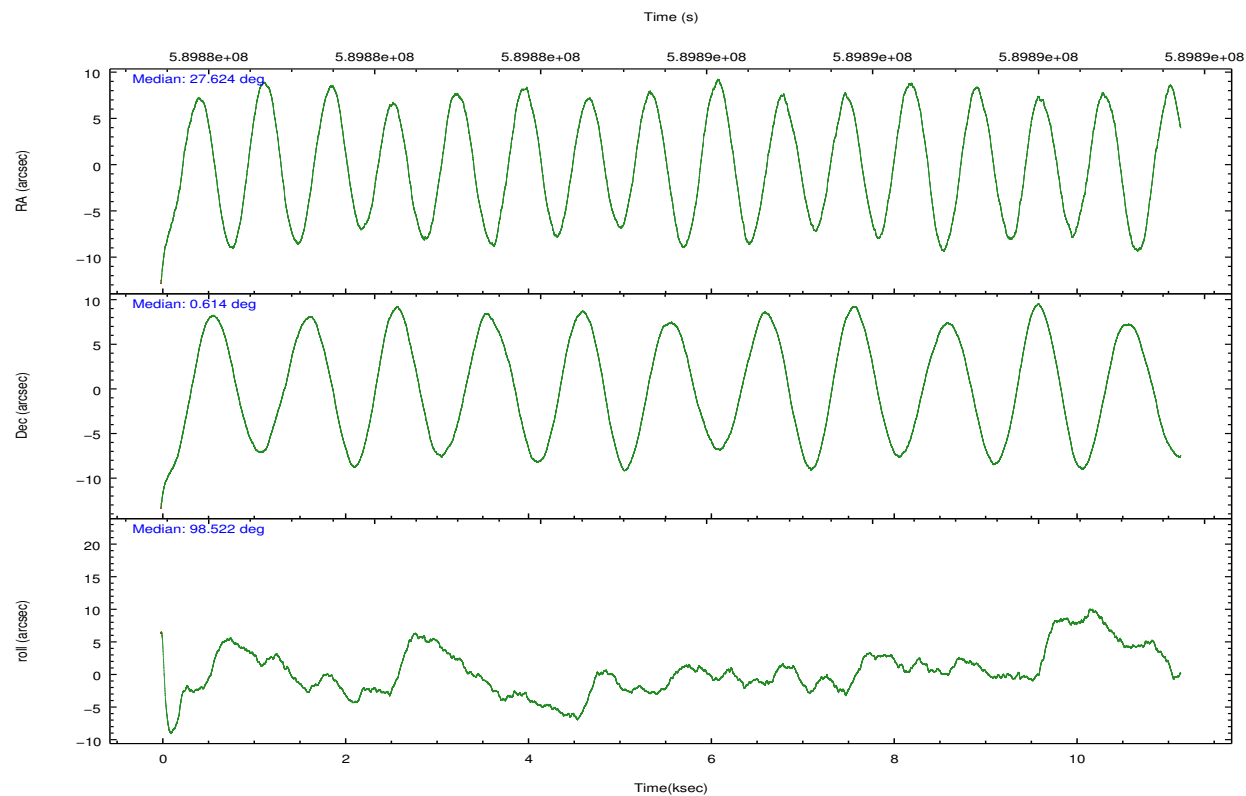
	ccd 0	ccd 1	ccd 2	ccd 3	ccd 7
grade 0 events	2802	3822	2646	2747	3475
	4%	5%	3%	4%	3%
grade 1 events	33	33	38	41	121
	0%	0%	0%	0%	0%
grade 2 events	2091	2167	1904	1738	8455
	3%	3%	2%	2%	9%
grade 3 events	842	811	755	843	3268
	1%	1%	1%	1%	3%
grade 4 events	732	850	821	773	3295
	1%	1%	1%	1%	3%
grade 5 events	3184	3241	2877	3512	9614
	4%	4%	4%	5%	10%
grade 6 events	1709	1870	1521	1641	21718
	2%	2%	2%	2%	23%
grade 7 events	53826	55532	60826	55863	42502
	82%	81%	85%	83%	45%

2.2 Compared Parameters

Parameter	Planned	Actual	Parameter	Planned	Actual
Instrument	ACIS	ACIS	Obspar format version number	7	7
Detector	ACIS-01237	ACIS-01237	Obspar file type	PREDICTED	ACTUAL
Grating	NONE	NONE	Obspar update status	NONE	UPDATED
Data mode	VFAINT	VFAINT	CCD I0 on	Y	Y
Observation mode	POINTING	POINTING	CCD I1 on	Y	Y
[deg] Pointing RA	27.641204	27.62390780690612	CCD I2 on	Y	Y
[deg] Pointing Dec	0.592622	0.6141058751704782	CCD I3 on	Y	Y
[deg] Pointing Roll	98.319279	98.52817206606656	CCD S0 on	N	N
[mm] SIM focus pos	-0.782348	-0.7809083437167272	CCD S1 on	N	N
[mm] SIM defocus	0	0.001439871863259334	CCD S2 on	N	N
[mm] SIM translation stage pos	-233.592463	-233.5874344608287	CCD S3 on	O1	Y
[mm] SIM translation stage offset	0	-0.005018542100998502	CCD S4 on	N	N
[s] Observation start time (MET)	589880135.184000	589879107.57662	CCD S5 on	N	N
Observation start date	2016-09-10T07:34:27	2016-09-10T07:18:27	Number of optional ACIS chips dropped	0	0
[s] Observation end time (MET)	589891135.184000	589892108.6773601	On-chip summing requested	N	N
Observation end date	2016-09-10T10:37:47	2016-09-10T10:55:08	Subarray requested	NONE	NONE
Read mode	TIMED	TIMED	Alternating exposures requested	N	N
			[s] Primary exposure time	0.000000	3.1

2.3 Aspect



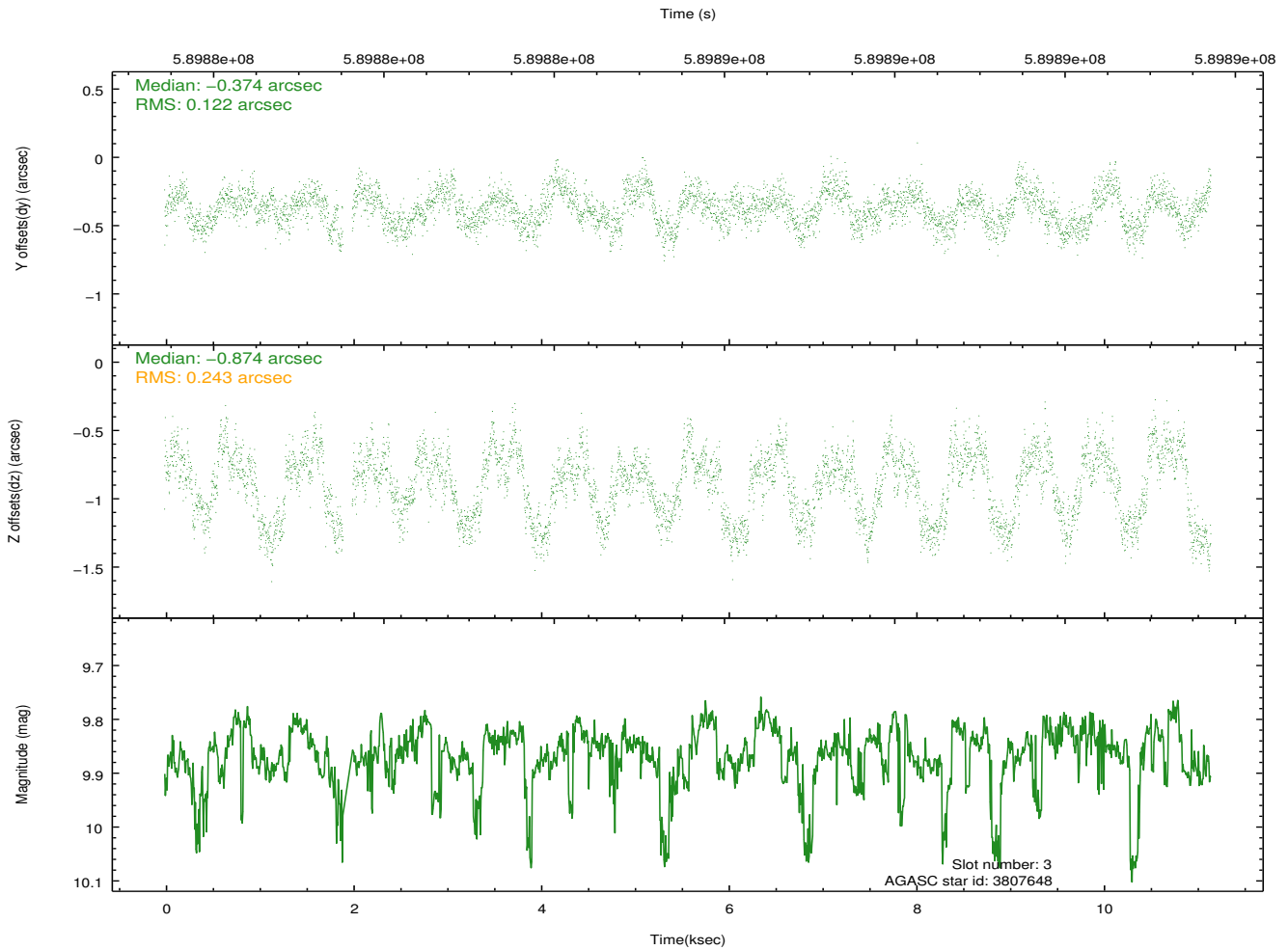
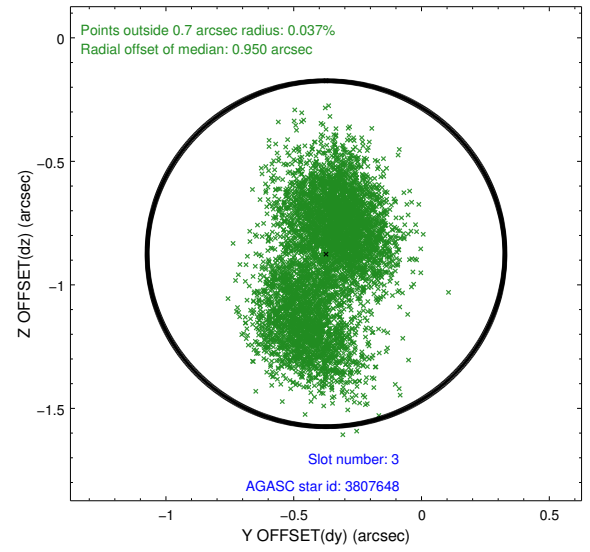
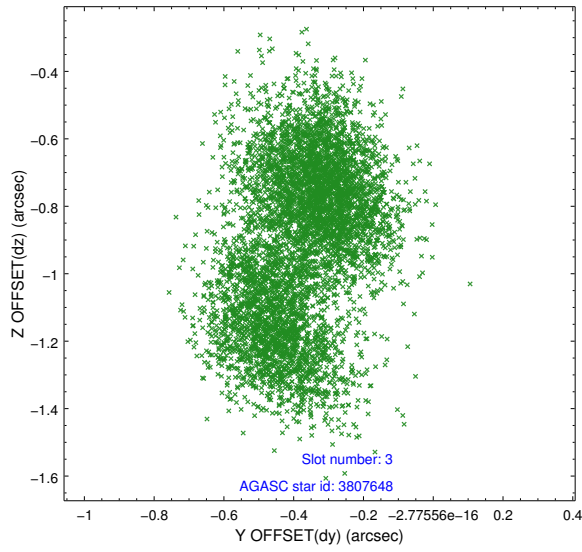


Slot Statistics

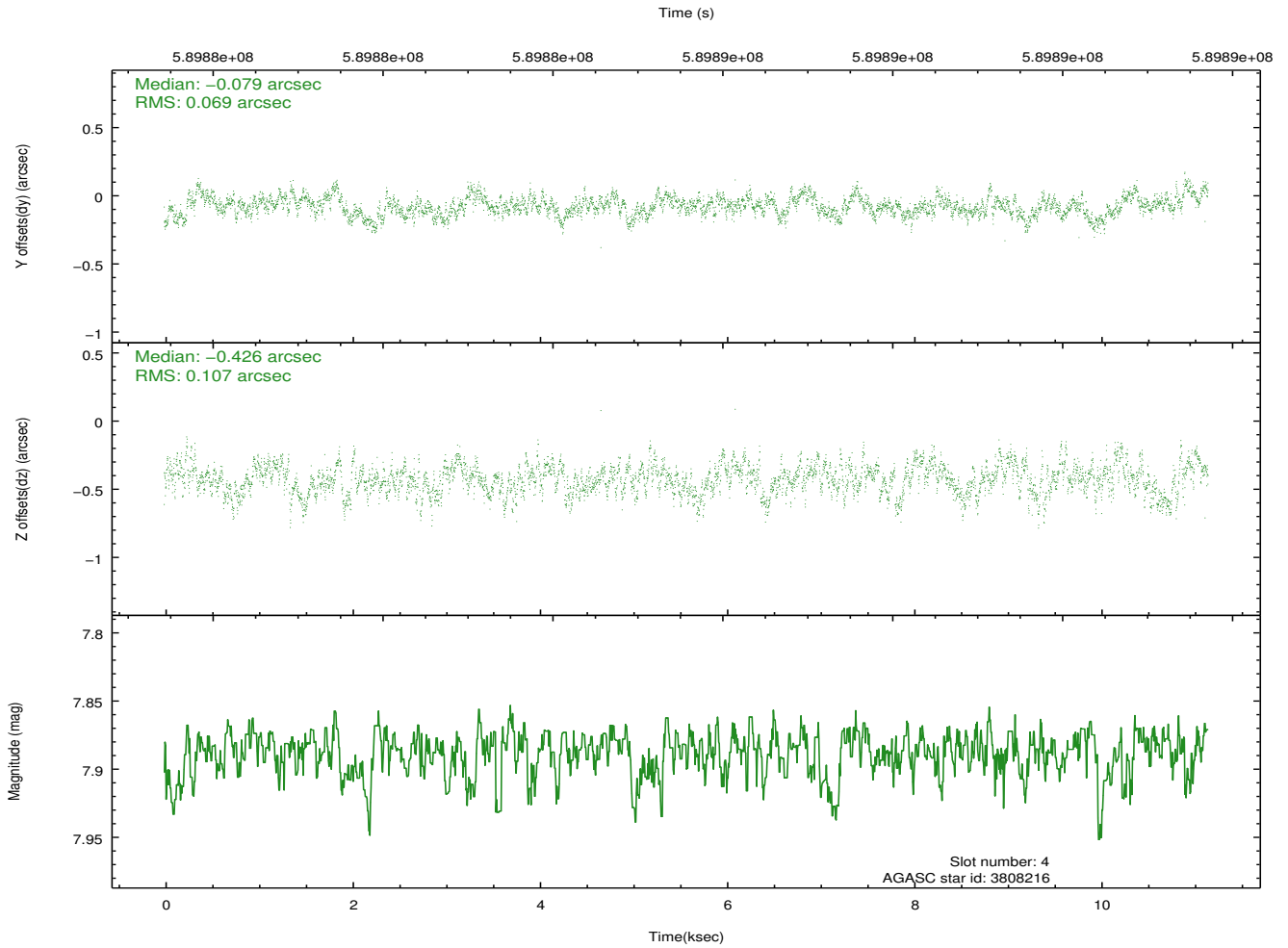
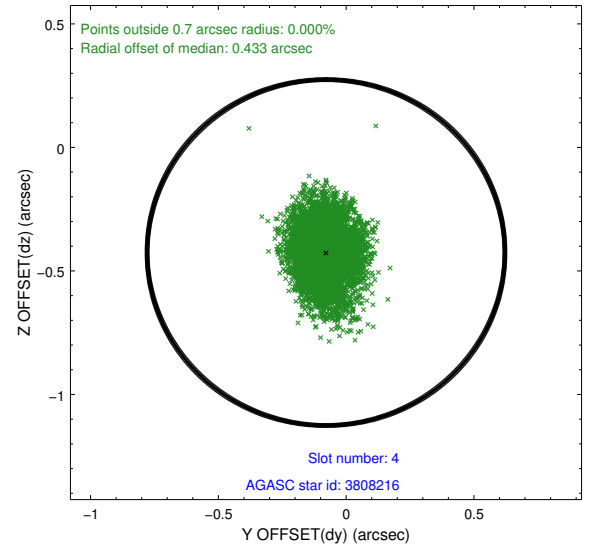
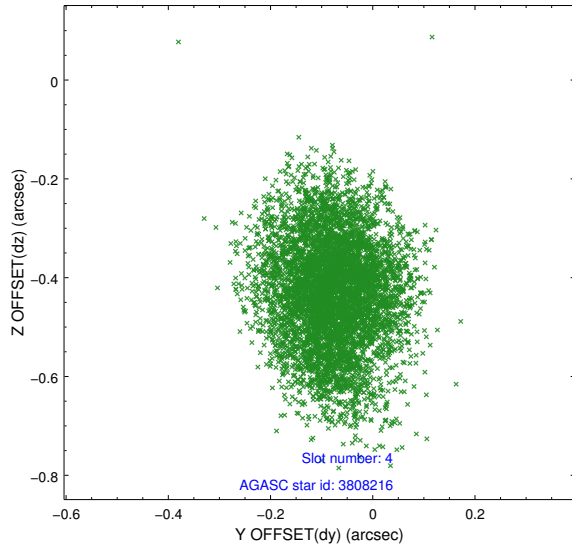
slot	status	used	id	mag	n_pts	med_dy	med_dz	dr1	dr2	ra	dec	mean_y	mean_z
0	FID		ACIS-I-1	7.15	2719	-0.070	-0.106	0.012	0.020	0.000000	0.000000	920.48	-844.46
1	FID		ACIS-I-4	7.08	2720	0.425	0.131	0.009	0.015	0.000000	0.000000	2141.15	1055.42
2	FID		ACIS-I-5	7.14	2720	-0.454	0.046	0.008	0.014	0.000000	0.000000	-1827.43	1053.46
3	GUIDE	used	3807648	9.86	5379	-0.374	-0.874	0.295	0.461	27.137343	0.617557	351.15	1780.88
4	GUIDE	used	3808216	7.89	5442	-0.079	-0.426	0.136	0.221	27.071052	0.452147	-203.02	2103.77
5	GUIDE	used	3937856	8.71	5442	-0.219	-0.296	0.151	0.238	27.502239	0.986318	1474.55	290.12
6	GUIDE	used	3933736	8.60	5437	0.256	0.863	0.133	0.215	28.335603	0.387418	-1091.56	-2365.56
7	GUIDE	used	3934112	9.73	5429	0.419	0.745	0.234	0.392	28.326560	0.373132	-1138.52	-2328.04

2.4 Star Slots

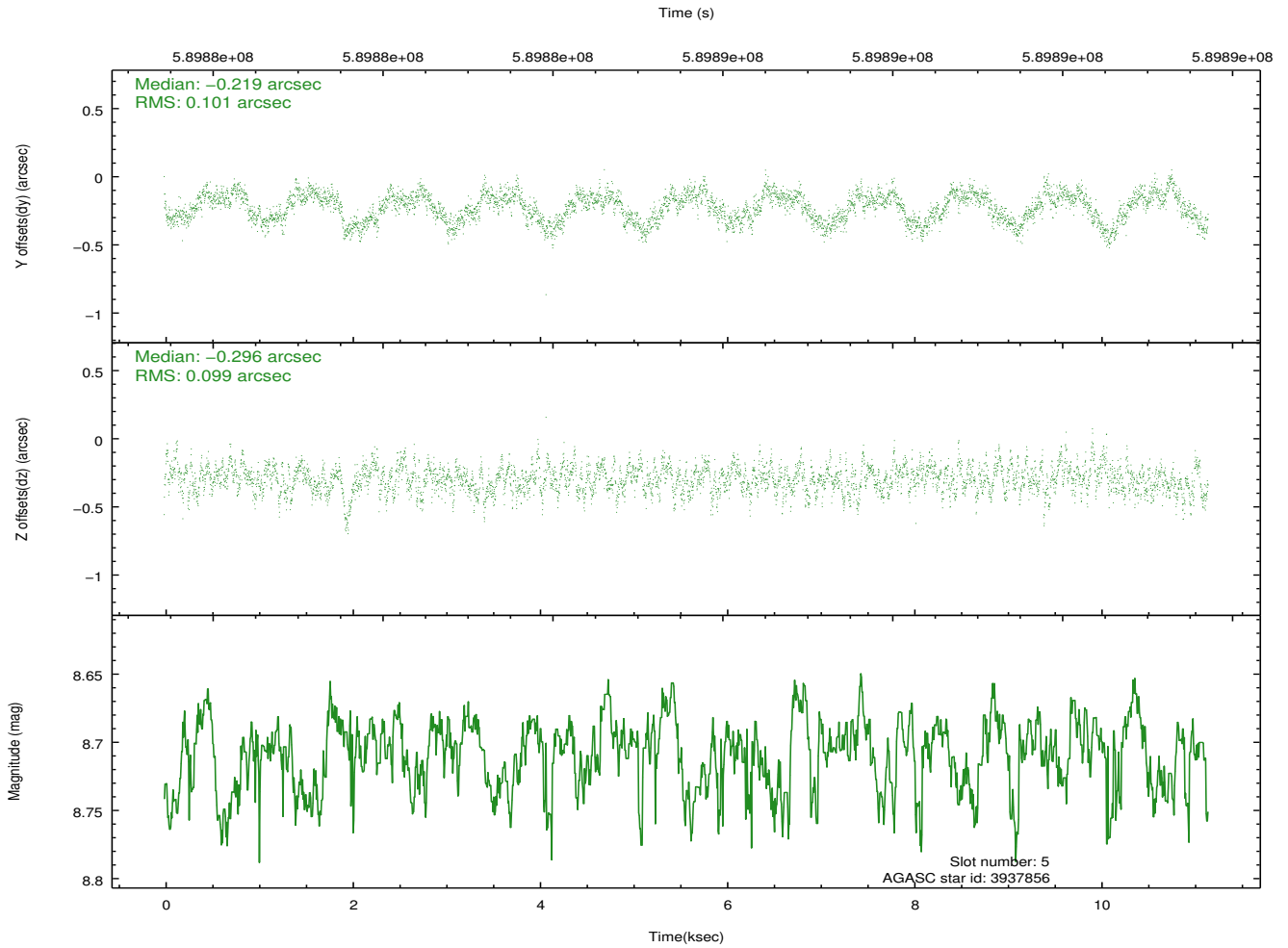
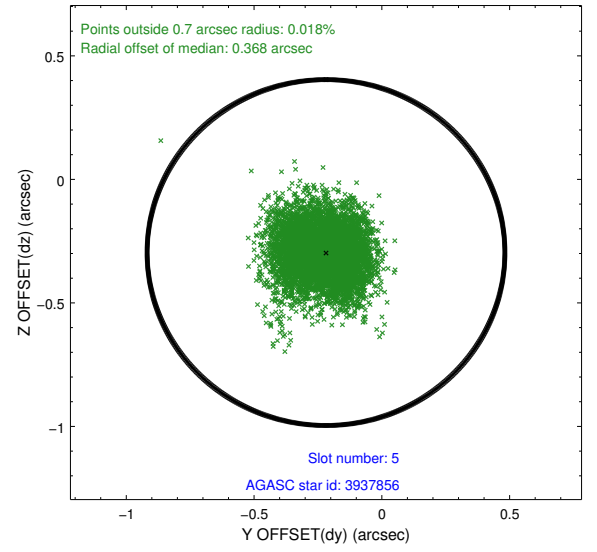
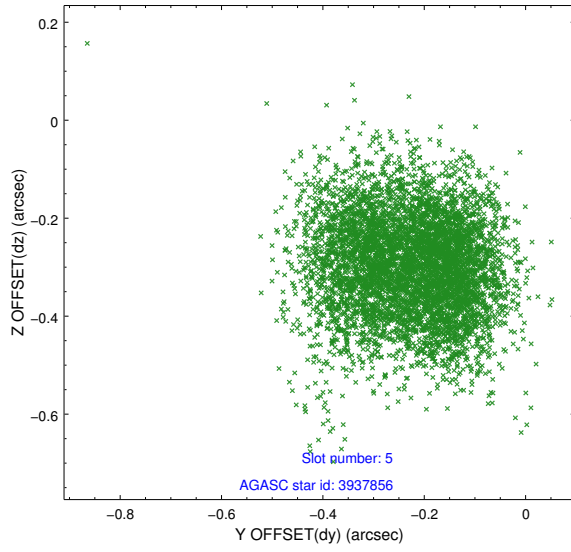
2.4.1 Slot 3



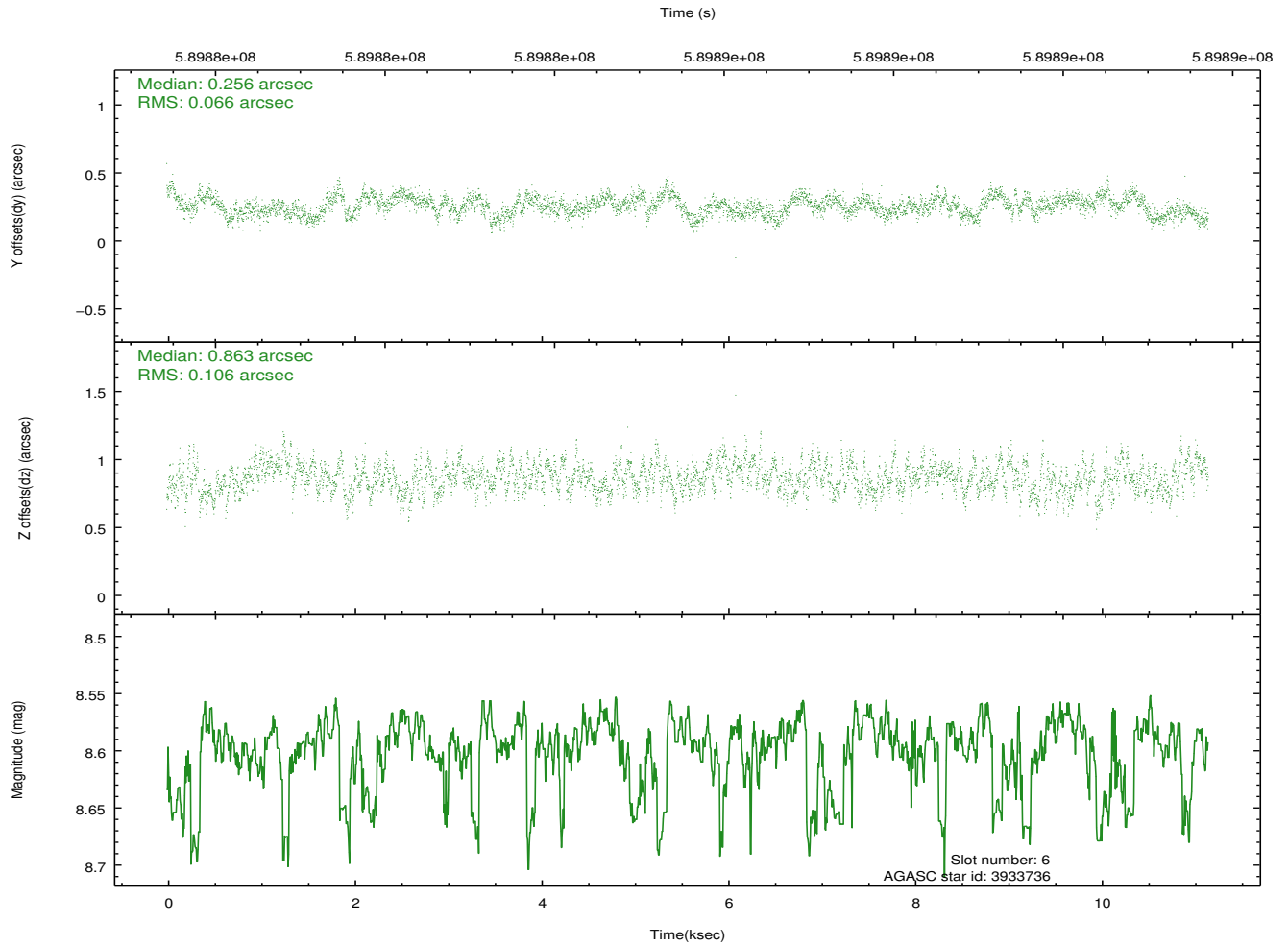
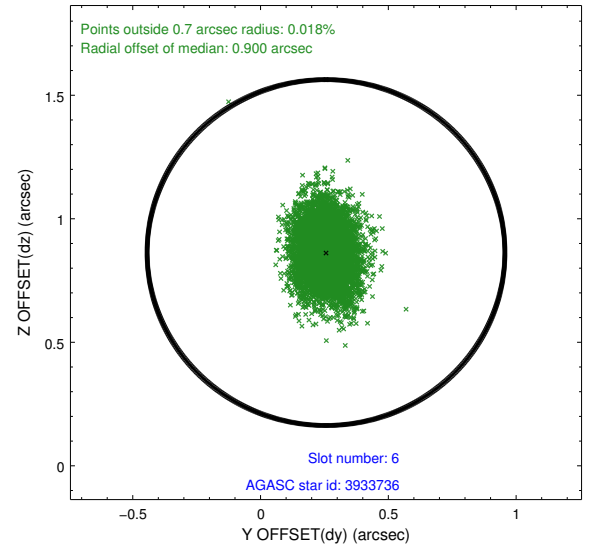
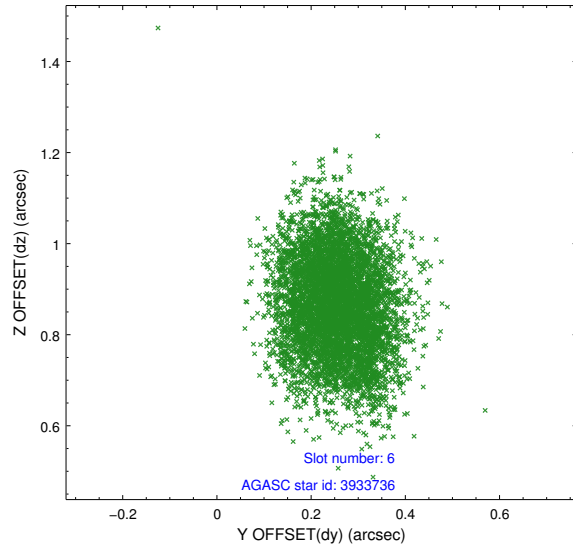
2.4.2 Slot 4



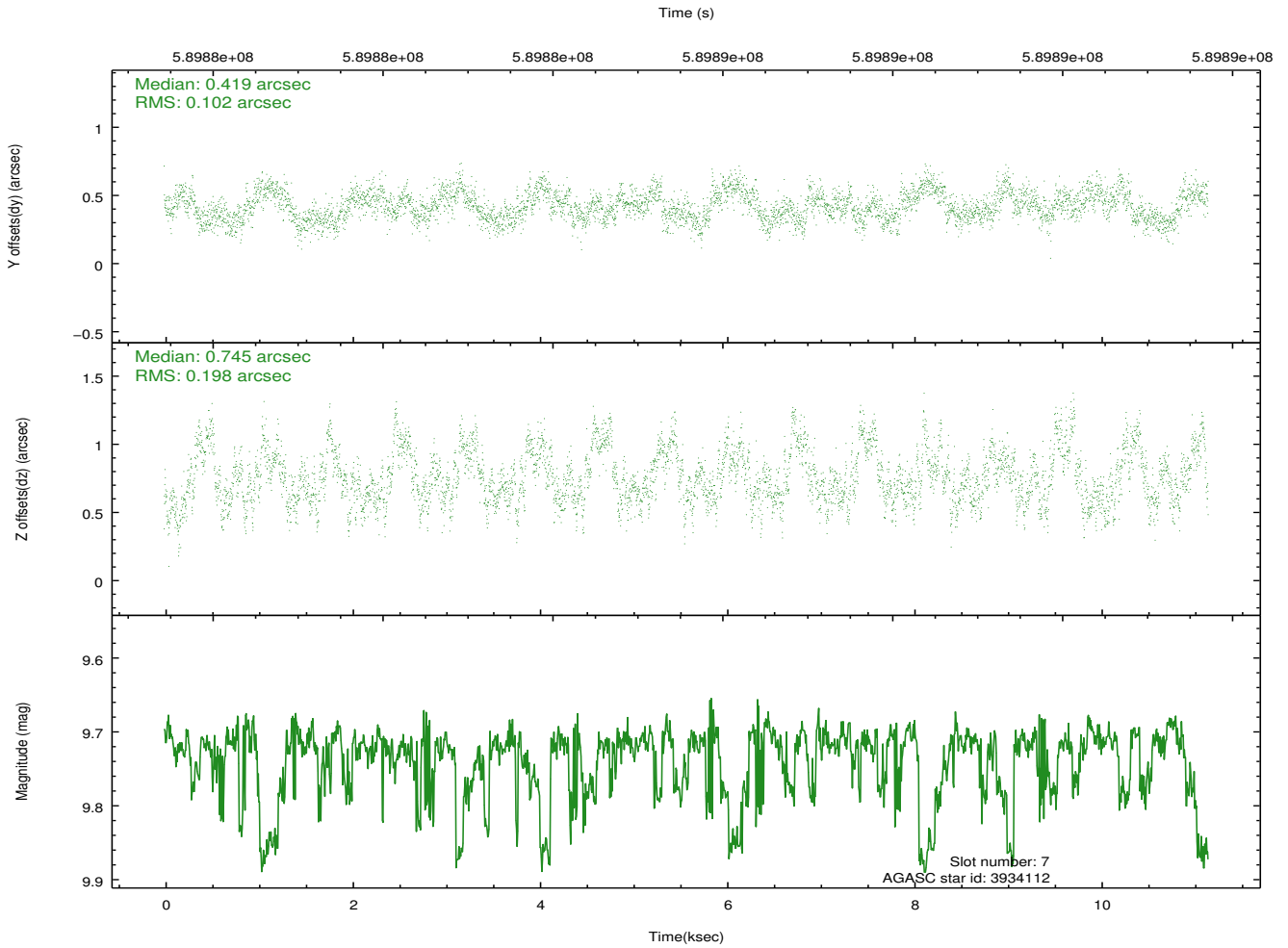
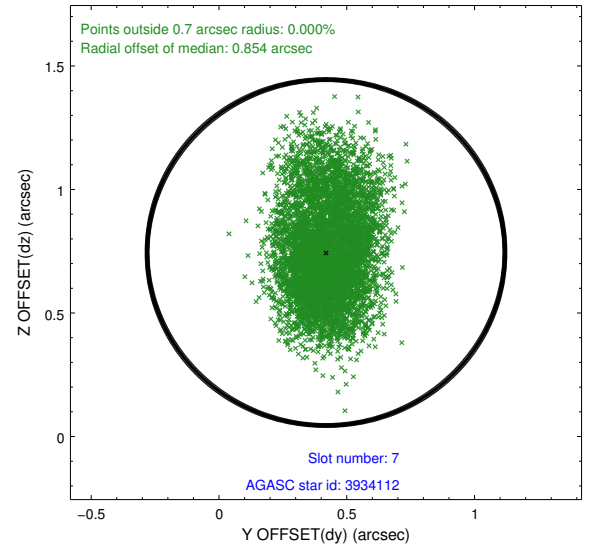
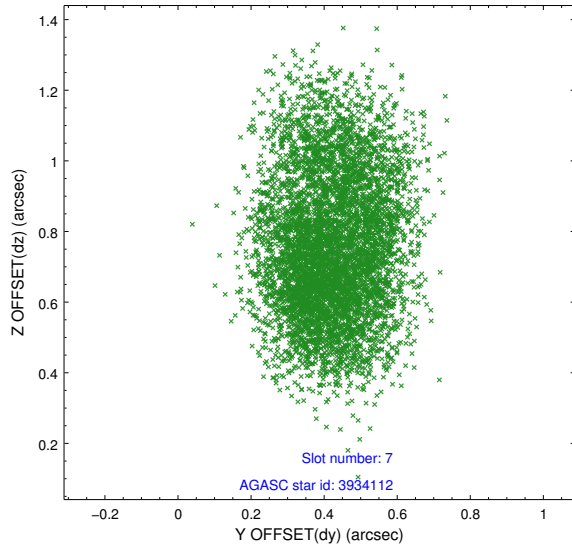
2.4.3 Slot 5



2.4.4 Slot 6

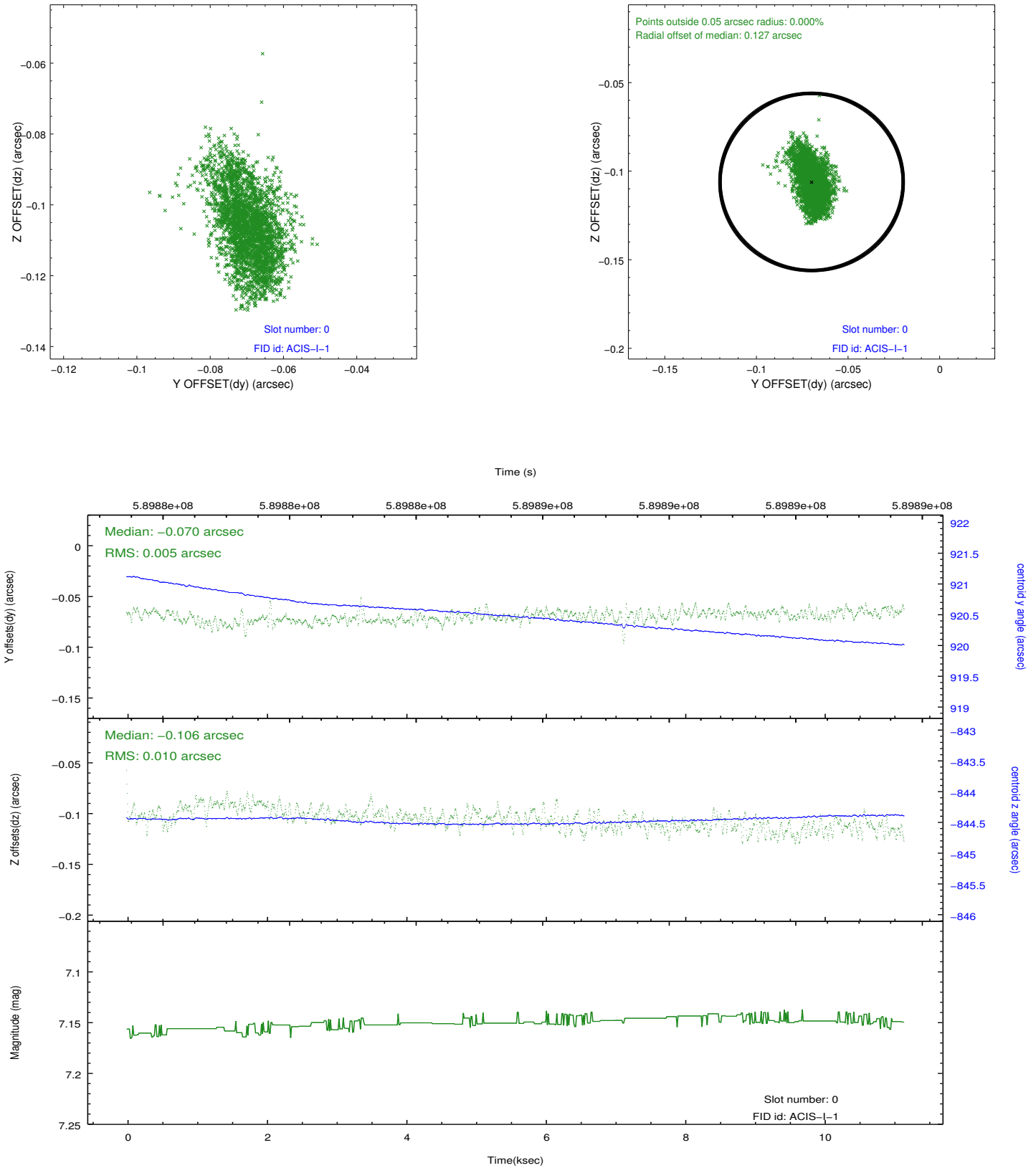


2.4.5 Slot 7

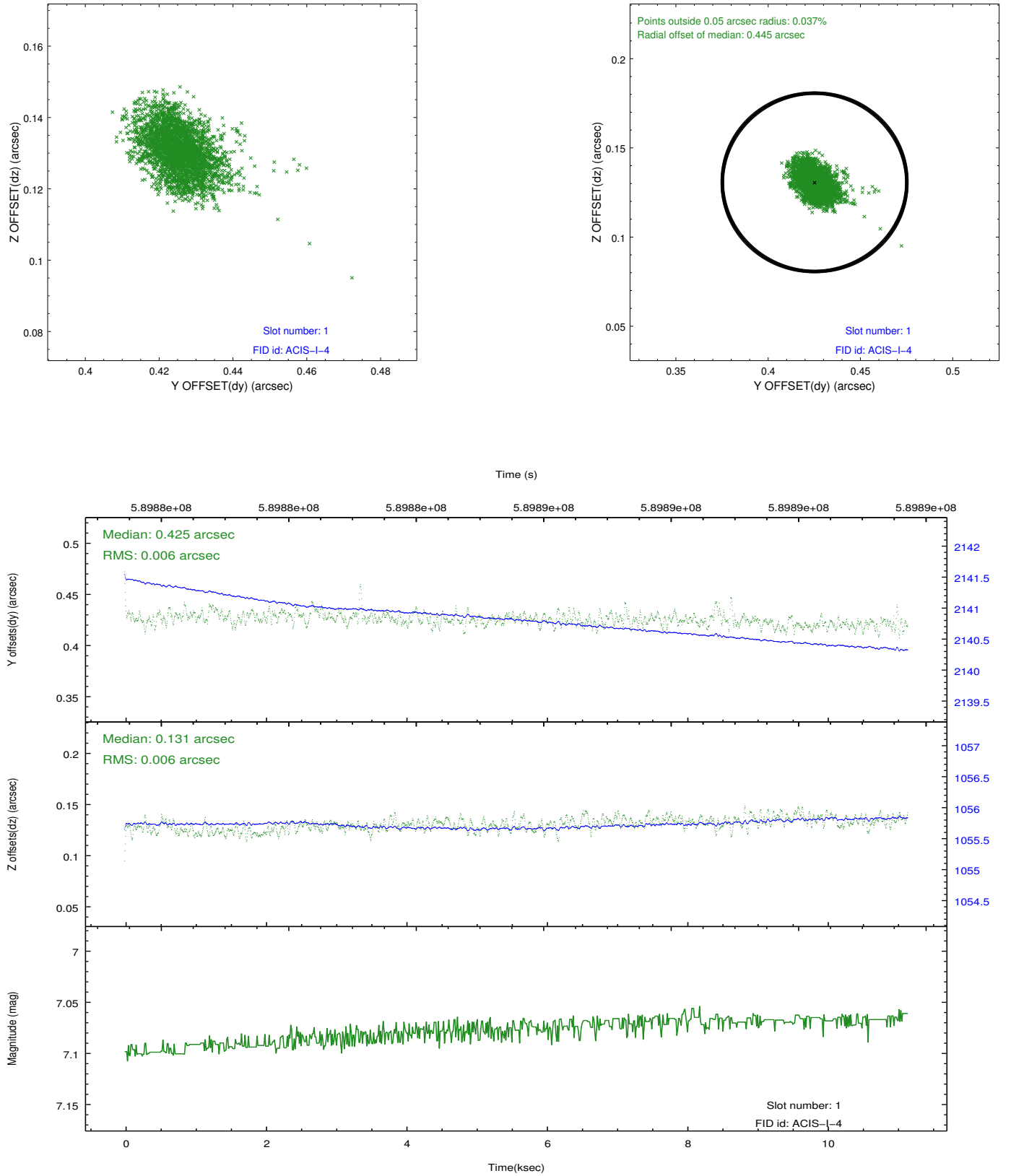


2.5 FID Slots

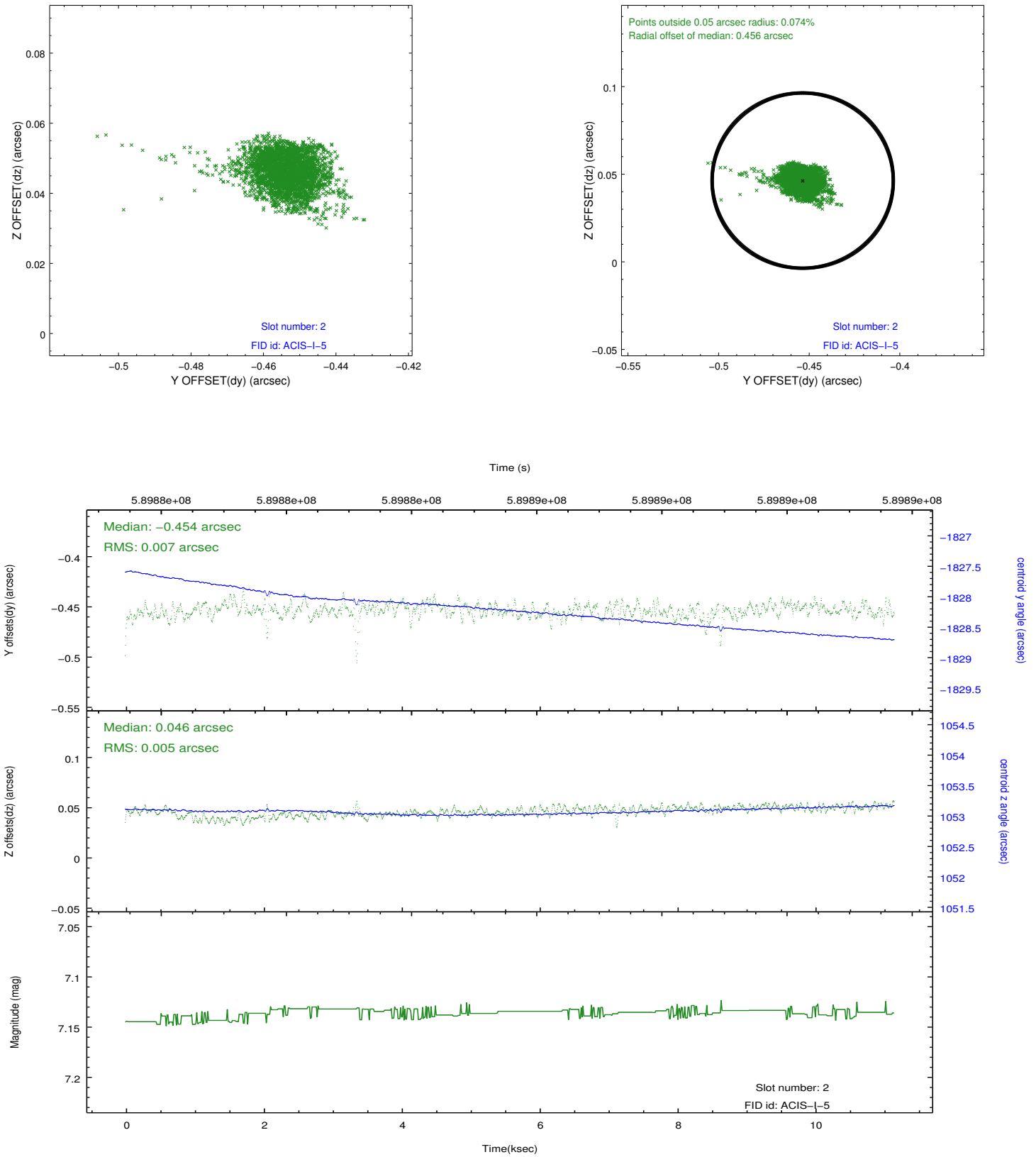
2.5.1 Slot 0



2.5.2 Slot 1



2.5.3 Slot 2



A Summary

A.1 Status

V&V Scientist	Joy Nichols
V&V Date (YYYY-MM-DD)	2016.09.12
V&V Edition	1
V&V Disposition and Status	OK
V&V Charge Time	11.060535911083

A.2 Comments