

V&V Reference Report

L2 ASCDS Version : 10.5.1.1

Observation 18629 - L2 Version 1
Chandra X-Ray Center

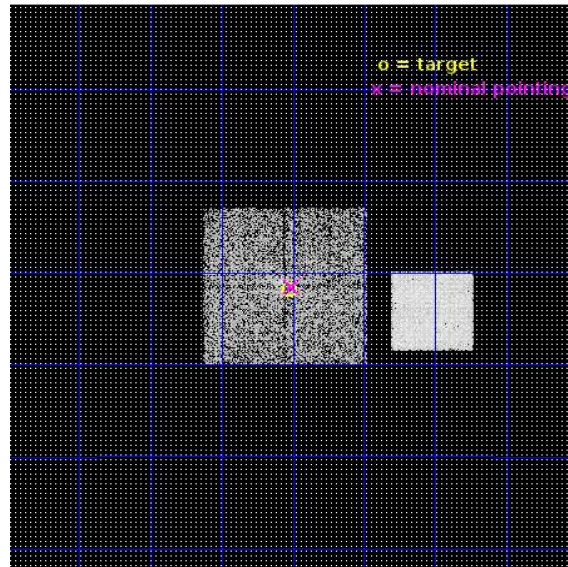
L2 Processing Date : Aug 25 2016

Contents

1	Front	2
2	OBI	3
2.1	OBI	3
2.1.1	Images	3
2.1.2	Bias	3
2.1.3	Parameters	4
2.1.4	Events	4
2.2	Compared Parameters	5
2.3	Aspect	6
2.4	Star Slots	9
2.4.1	Slot 3	9
2.4.2	Slot 4	10
2.4.3	Slot 5	11
2.4.4	Slot 6	12
2.4.5	Slot 7	13
2.5	FID Slots	14
2.5.1	Slot 0	14
2.5.2	Slot 1	15
2.5.3	Slot 2	16
A	Summary	17
A.1	Status	17
A.2	Comments	17

1 Front

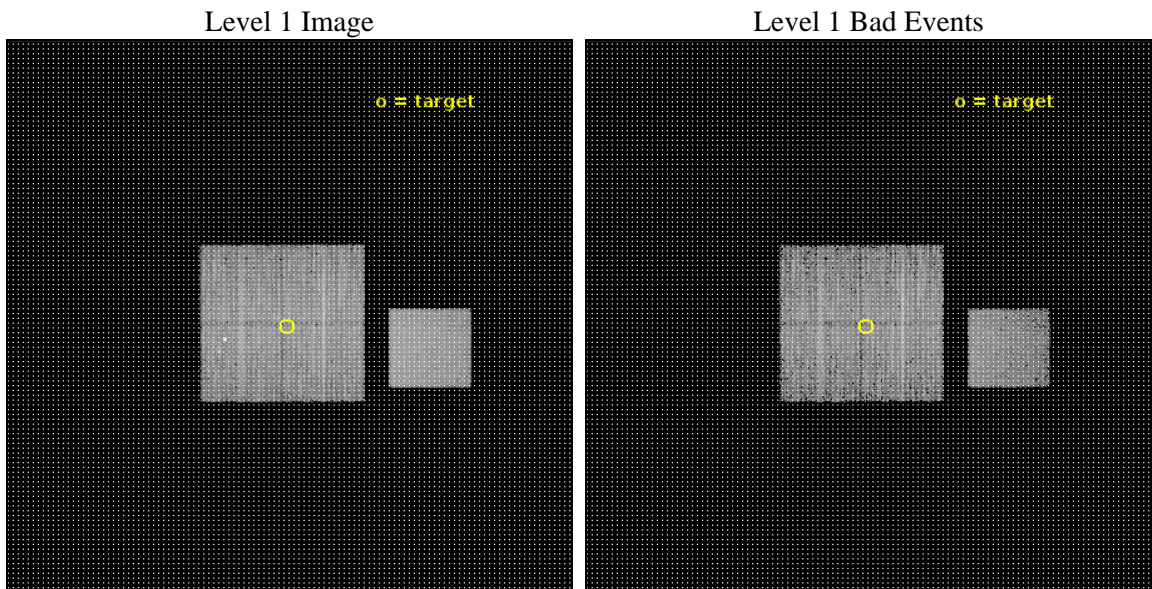
seq_num	801637	Sequence number
obs_id	18629	Observation id
title	Lensing Calibration of the Evolution of Cluster Scaling Relations for eROSITA	Proposal title
observer	Dr. Peter Predehl	Principal investigator
object	CODEX 59915	Source name
dtcycle	0	
cycle	P	events from which exps? Prim/Second/Both
ra_targ	21.255	Observer's specified target RA [deg]
dec_targ	-5.531389	Observer's specified target Dec [deg]
ra_nom	21.252393724462	Nominal RA [deg]
dec_nom	-5.525144350858	Nominal Dec [deg]
roll_nom	89.867428403706	Nominal Roll [deg]
revision	1	Processing version of data
ontime	8059.5393463373	Sum of GTIs [s]
livetime	7954.2355314309	Livetime [s]
ontime0	8059.4162262678	Sum of GTIs [s]
ontime1	8059.4572663307	Sum of GTIs [s]
ontime2	8059.4983062744	Sum of GTIs [s]
ontime3	8059.5393463373	Sum of GTIs [s]
ontime7	8059.580386281	Sum of GTIs [s]
l2events	46489	Number of level 2 events



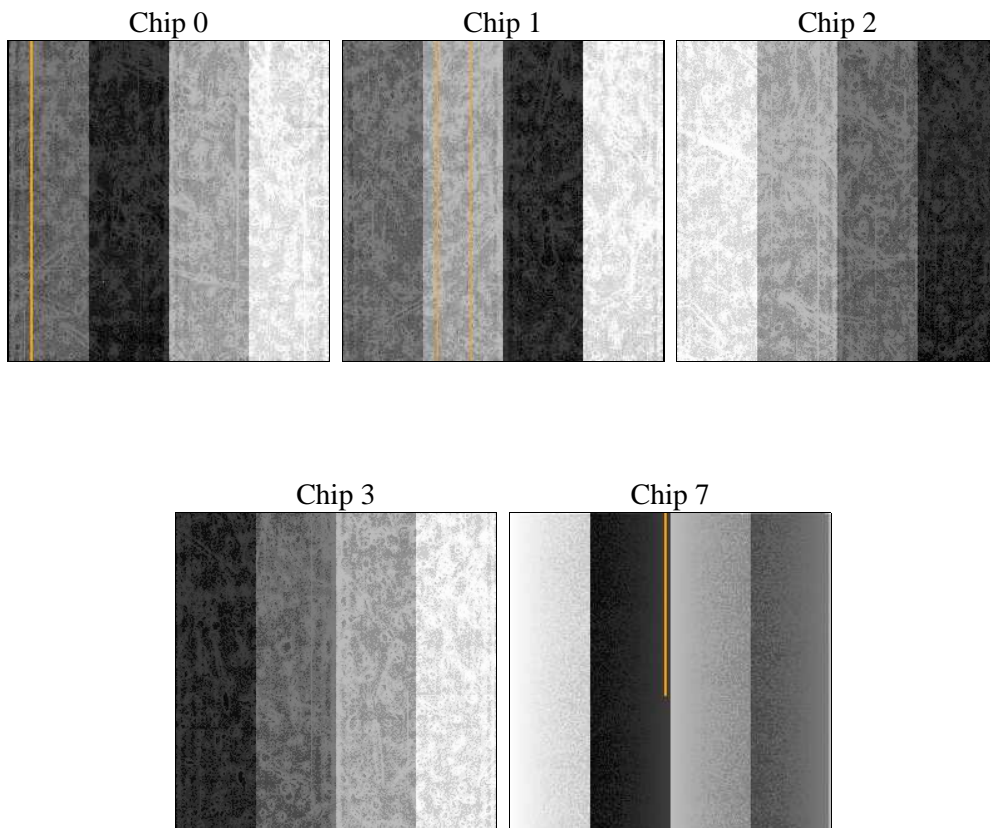
2 OBI

2.1 OBI

2.1.1 Images



2.1.2 Bias



2.1.3 Parameters

obi_num	1	Obi number	sched_exp_time	8000.000000	[s] Scheduled observation exposure time
ascdsver	10.5.1.1	Processing system revision	ontime	8059.5393463373	Sum of GTIs [s]
caldsver	4.7.2	 	ontime0	8059.4162262678	Sum of GTIs [s]
date	2016-08-25T05:23:33	Date and time of file creation	ontime1	8059.4572663307	Sum of GTIs [s]
revision	1	Processing version of data	ontime2	8059.4983062744	Sum of GTIs [s]
			ontime3	8059.5393463373	Sum of GTIs [s]
			ontime7	8059.580386281	Sum of GTIs [s]
			l1events	269895	Number of level 1 events

2.1.4 Events

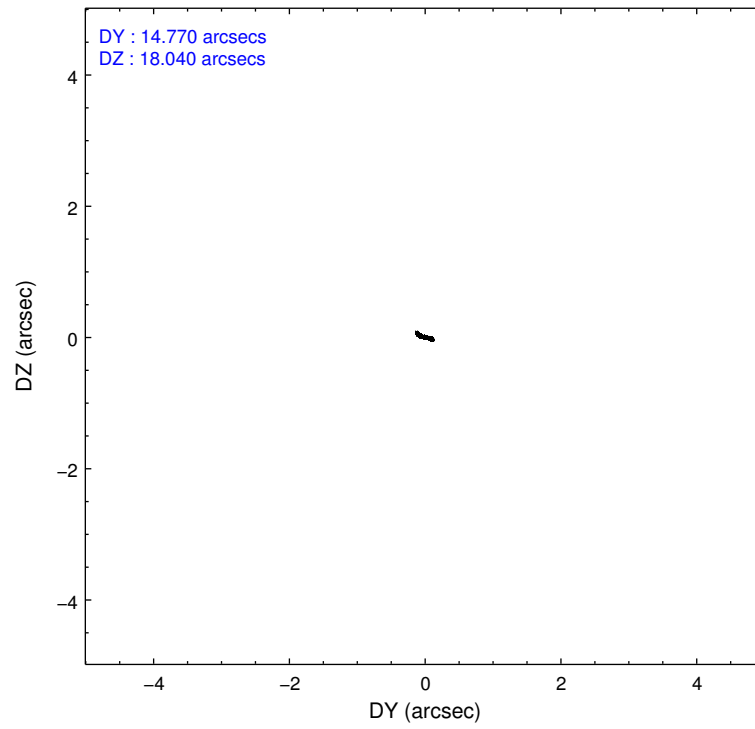
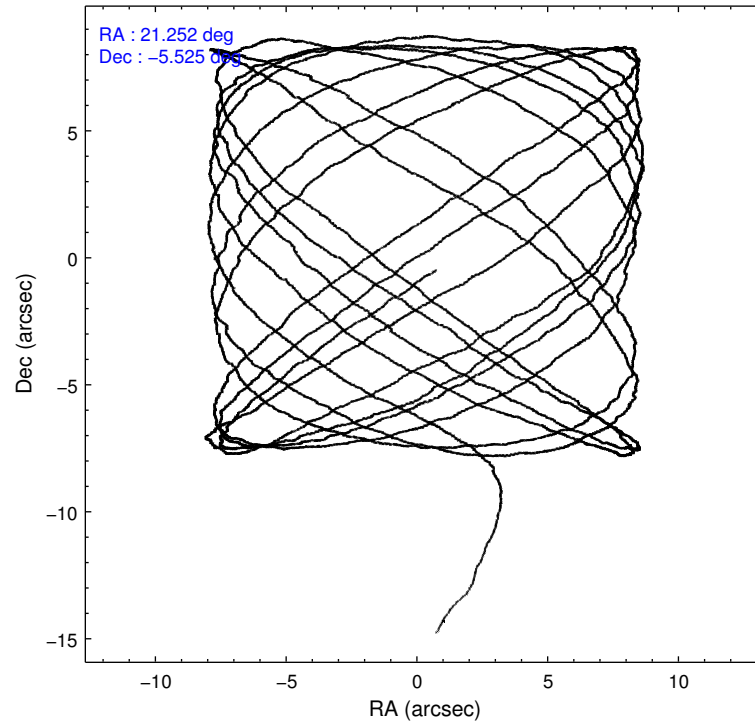
	ccd 0	ccd 1	ccd 2	ccd 3	ccd 7
level 1 events	47481	50710	53411	51045	67248
rejected events	41574	42172	48169	45798	38690
rejected %	87%	83%	90%	89%	57%

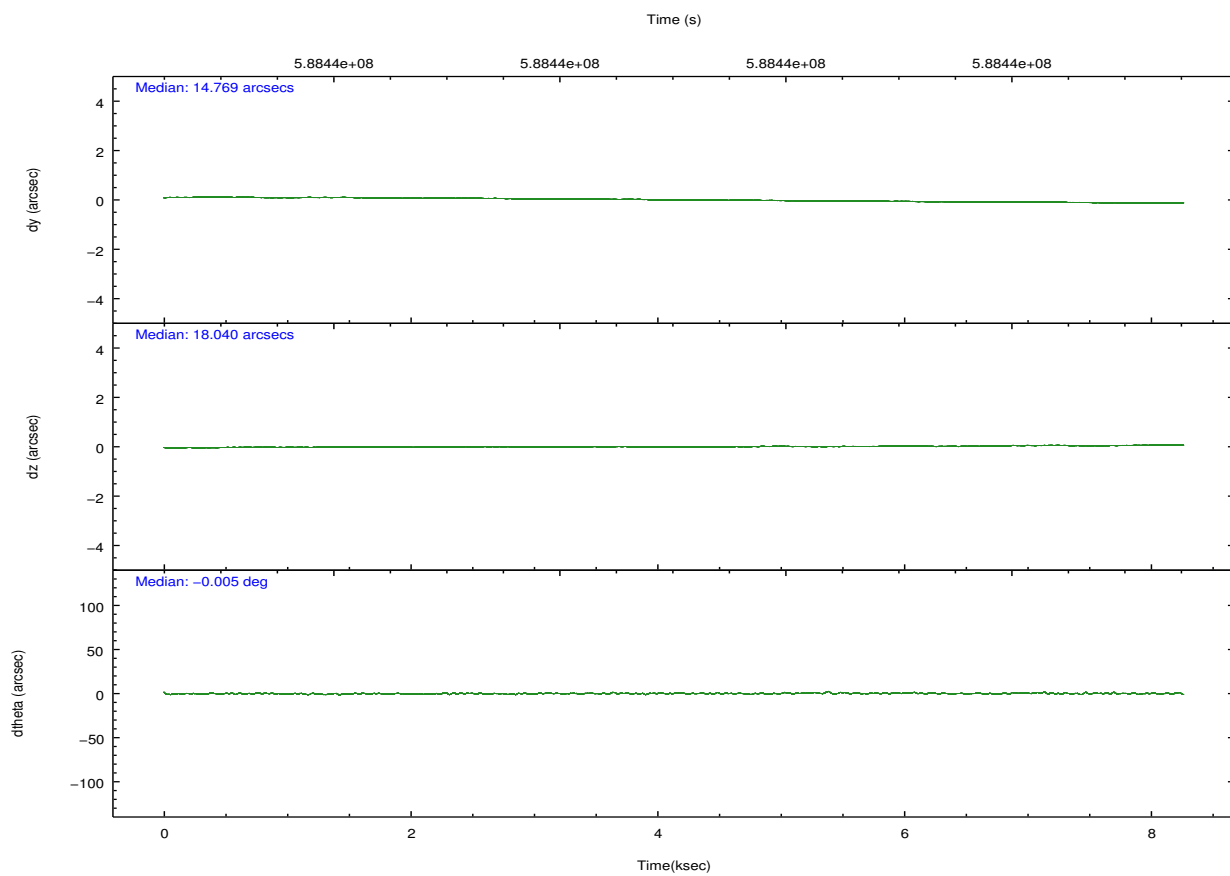
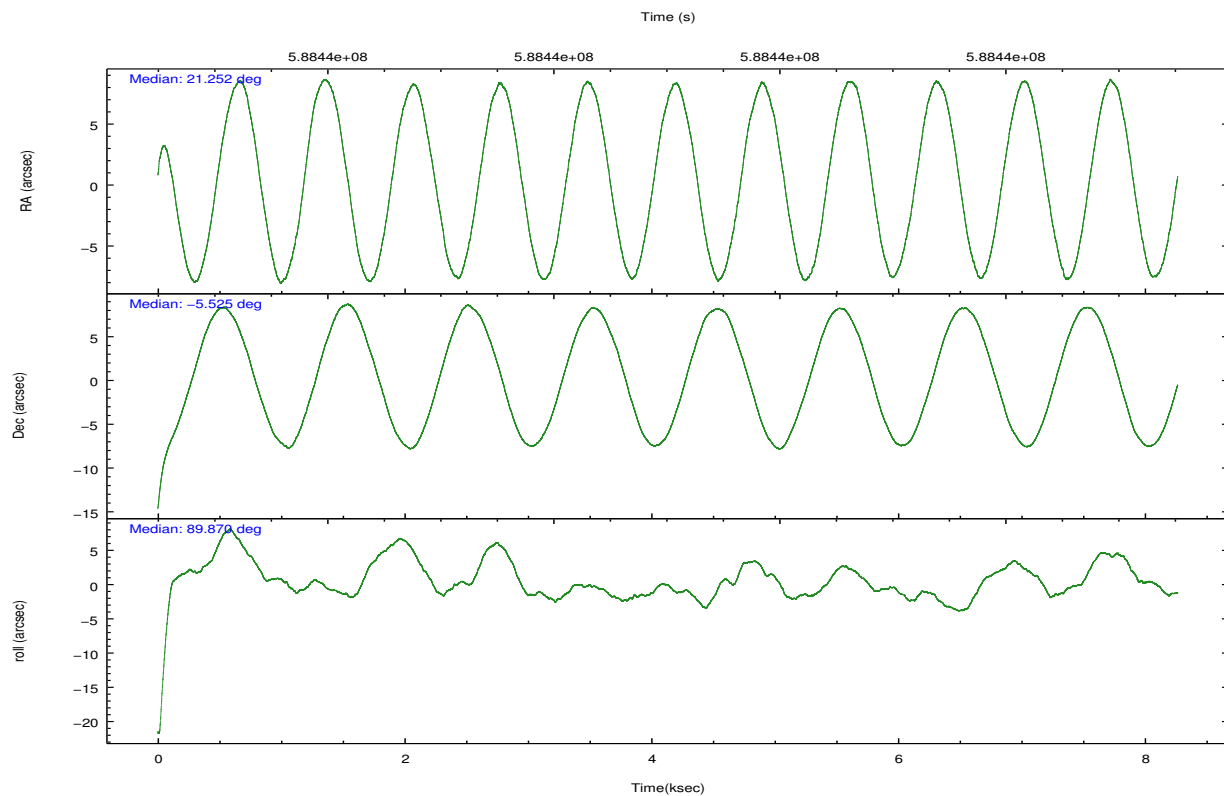
	ccd 0	ccd 1	ccd 2	ccd 3	ccd 7
grade 0 events	2084	4505	1863	1837	2208
	4%	8%	3%	3%	3%
grade 1 events	22	37	21	20	93
	0%	0%	0%	0%	0%
grade 2 events	1414	1405	1246	1153	6104
	2%	2%	2%	2%	9%
grade 3 events	577	553	534	526	2168
	1%	1%	0%	1%	3%
grade 4 events	568	601	569	563	2083
	1%	1%	1%	1%	3%
grade 5 events	2096	2234	2047	2460	6392
	4%	4%	3%	4%	9%
grade 6 events	1268	1476	1032	1174	16002
	2%	2%	1%	2%	23%
grade 7 events	39452	39899	46099	43312	32198
	83%	78%	86%	84%	47%

2.2 Compared Parameters

Parameter	Planned	Actual	Parameter	Planned	Actual
Instrument	ACIS	ACIS	Obspar format version number	7	7
Detector	ACIS-01237	ACIS-01237	Obspar file type	PREDICTED	ACTUAL
Grating	NONE	NONE	Obspar update status	NONE	UPDATED
Data mode	VFAINT	VFAINT	CCD I0 on	Y	Y
Observation mode	POINTING	POINTING	CCD I1 on	Y	Y
[deg] Pointing RA	21.266362	21.25239372446245	CCD I2 on	Y	Y
[deg] Pointing Dec	-5.548975	-5.525144350858013	CCD I3 on	Y	Y
[deg] Pointing Roll	89.660121	89.86742840370562	CCD S0 on	N	N
[mm] SIM focus pos	-0.782348	-0.7809083437167272	CCD S1 on	N	N
[mm] SIM defocus	0	0.001439871863259334	CCD S2 on	N	N
[mm] SIM translation stage pos	-233.592463	-233.5874344608287	CCD S3 on	O1	Y
[mm] SIM translation stage offset	0	-0.005018542100998502	CCD S4 on	N	N
[s] Observation start time (MET)	588435143.184000	588434152.181	CCD S5 on	N	N
Observation start date	2016-08-24T14:11:15	2016-08-24T13:55:52	Number of optional ACIS chips dropped	0	0
[s] Observation end time (MET)	588443143.184000	588443899.93156	On-chip summing requested	N	N
Observation end date	2016-08-24T16:24:35	2016-08-24T16:38:19	Subarray requested	NONE	NONE
Read mode	TIMED	TIMED	Alternating exposures requested	N	N
			[s] Primary exposure time	0.000000	3.1

2.3 Aspect



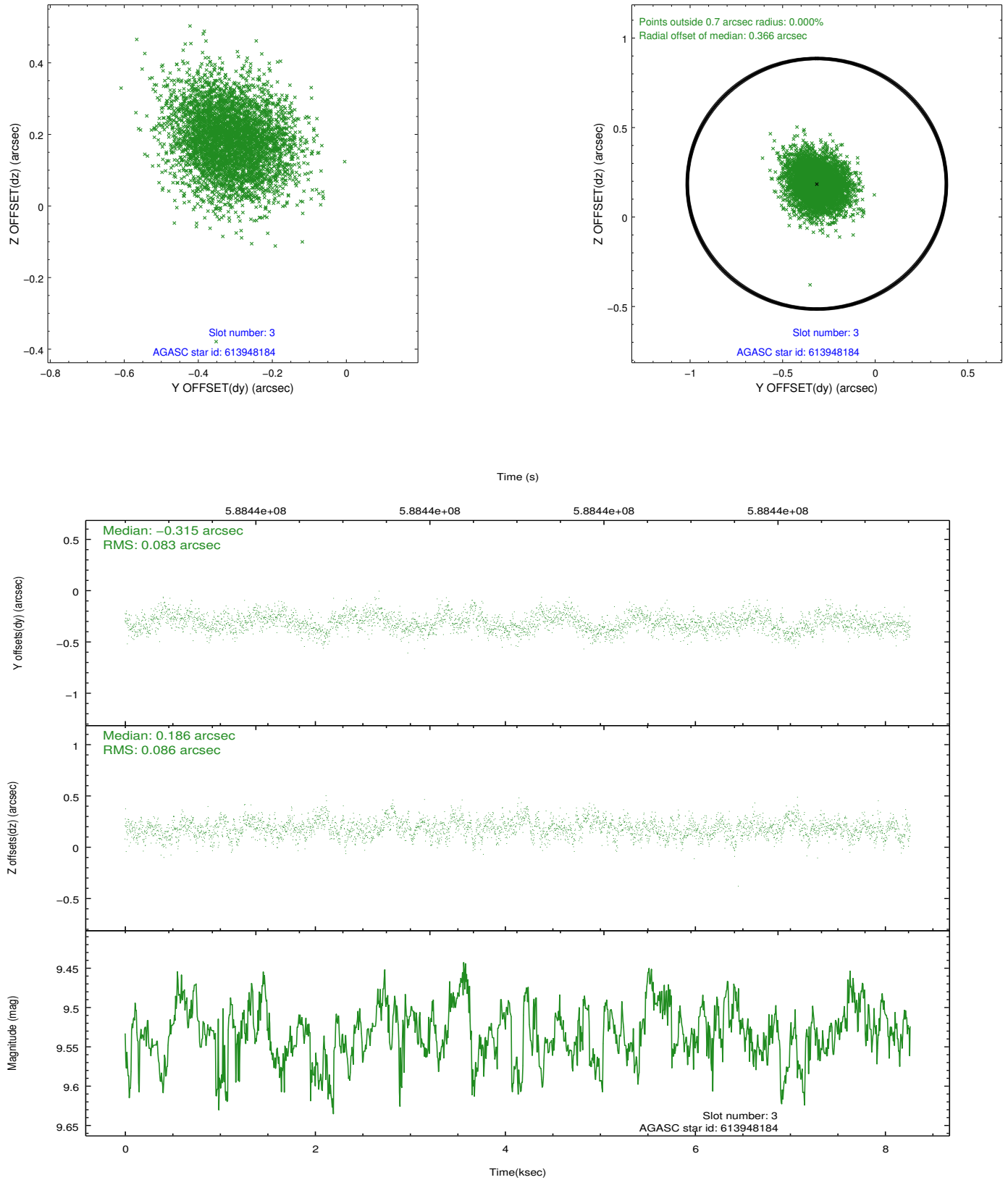


Slot Statistics

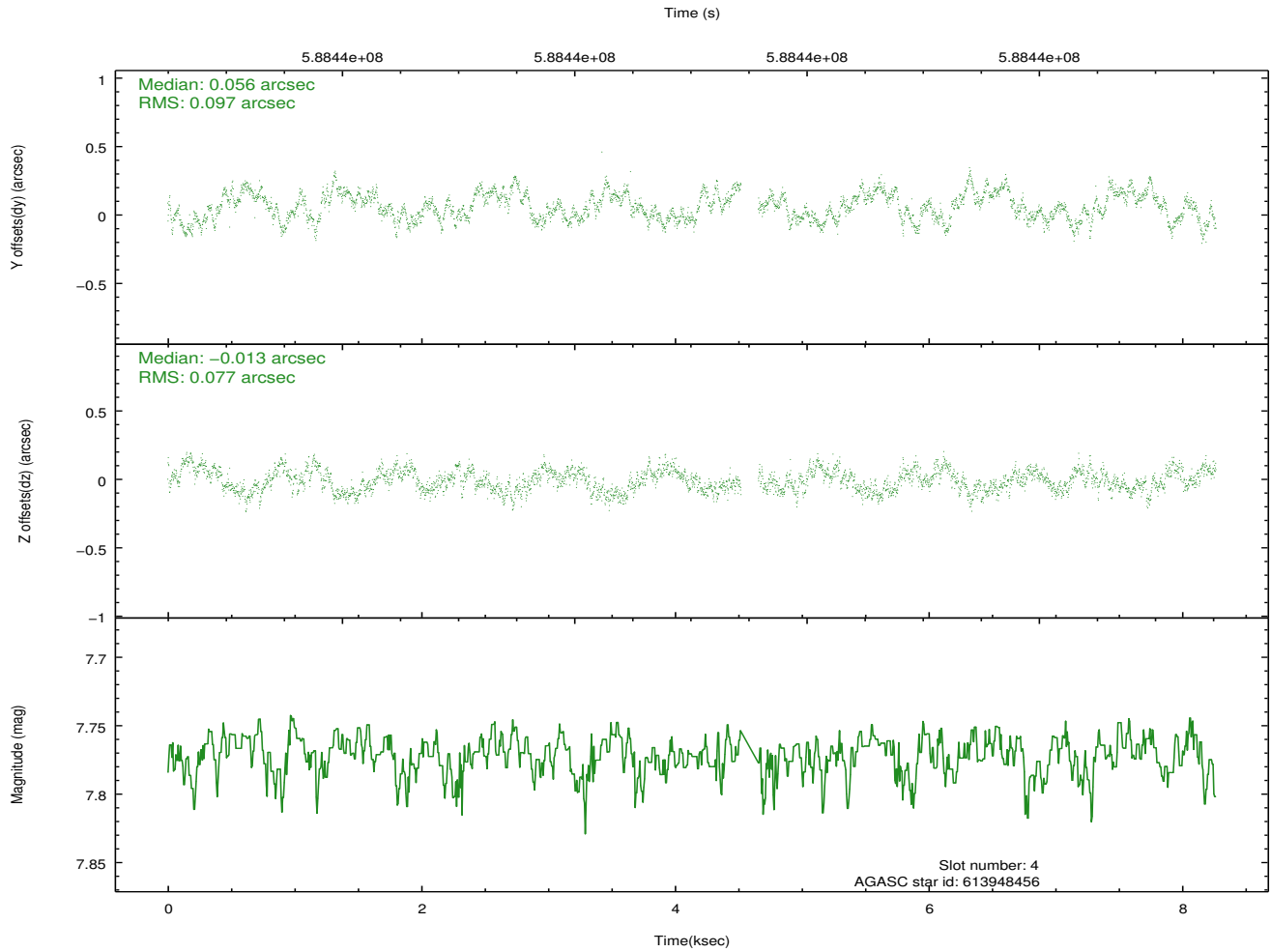
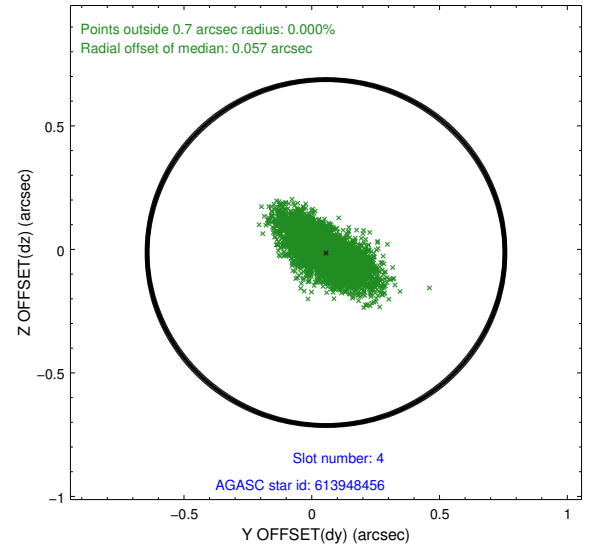
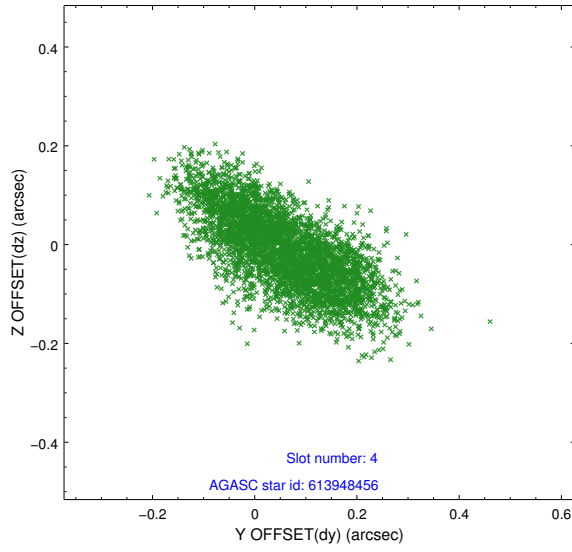
slot	status	used	id	mag	n_pts	med_dy	med_dz	dr1	dr2	ra	dec	mean_y	mean_z
0	FID		ACIS-I-1	7.26	2016	-0.053	-0.060	0.008	0.014	0.000000	0.000000	924.69	-841.73
1	FID		ACIS-I-4	7.18	2016	0.342	0.091	0.008	0.013	0.000000	0.000000	2145.39	1057.96
2	FID		ACIS-I-5	7.26	2016	-0.387	0.040	0.007	0.012	0.000000	0.000000	-1822.89	1056.29
3	GUIDE	used	613948184	9.53	4028	-0.315	0.186	0.127	0.205	20.815112	-4.937432	2191.25	1630.78
4	GUIDE	used	613948456	7.77	3967	0.056	-0.013	0.133	0.217	20.961673	-5.819011	-981.02	1086.78
5	GUIDE	used	613949208	9.60	4030	0.403	0.157	0.189	0.320	21.228248	-5.869919	-1158.19	128.92
6	GUIDE	used	613953776	7.42	4033	-0.667	-0.663	0.105	0.155	20.650709	-4.936711	2189.41	2220.23
7	GUIDE	used	613958232	9.68	4025	0.520	0.325	0.178	0.282	21.189055	-5.979402	-1547.79	266.81

2.4 Star Slots

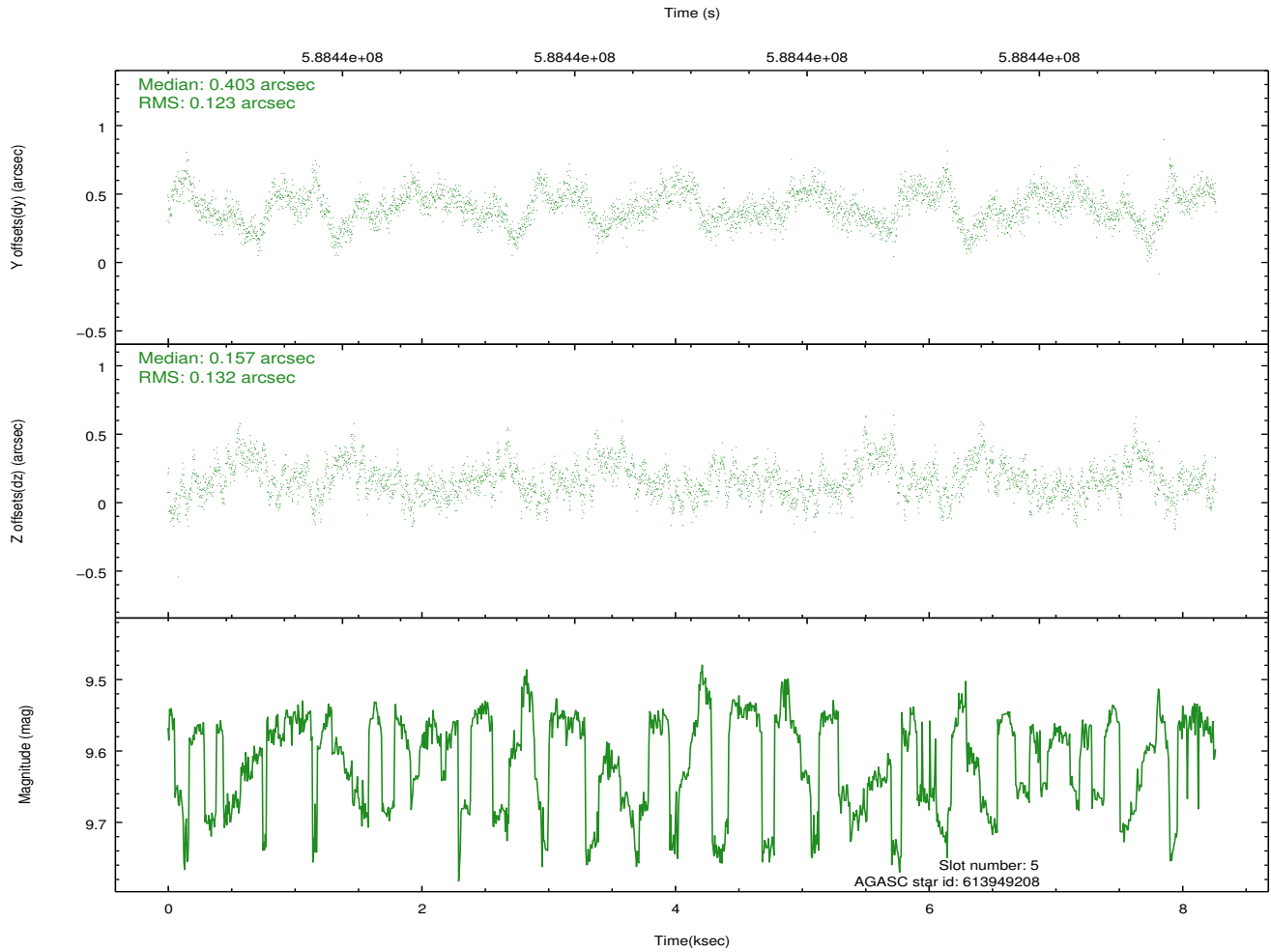
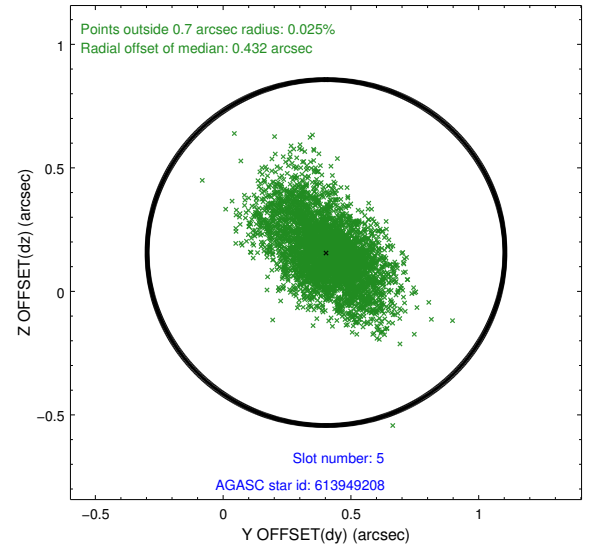
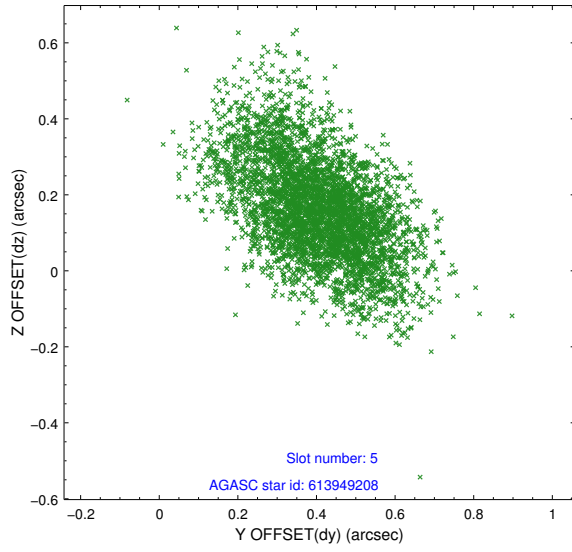
2.4.1 Slot 3



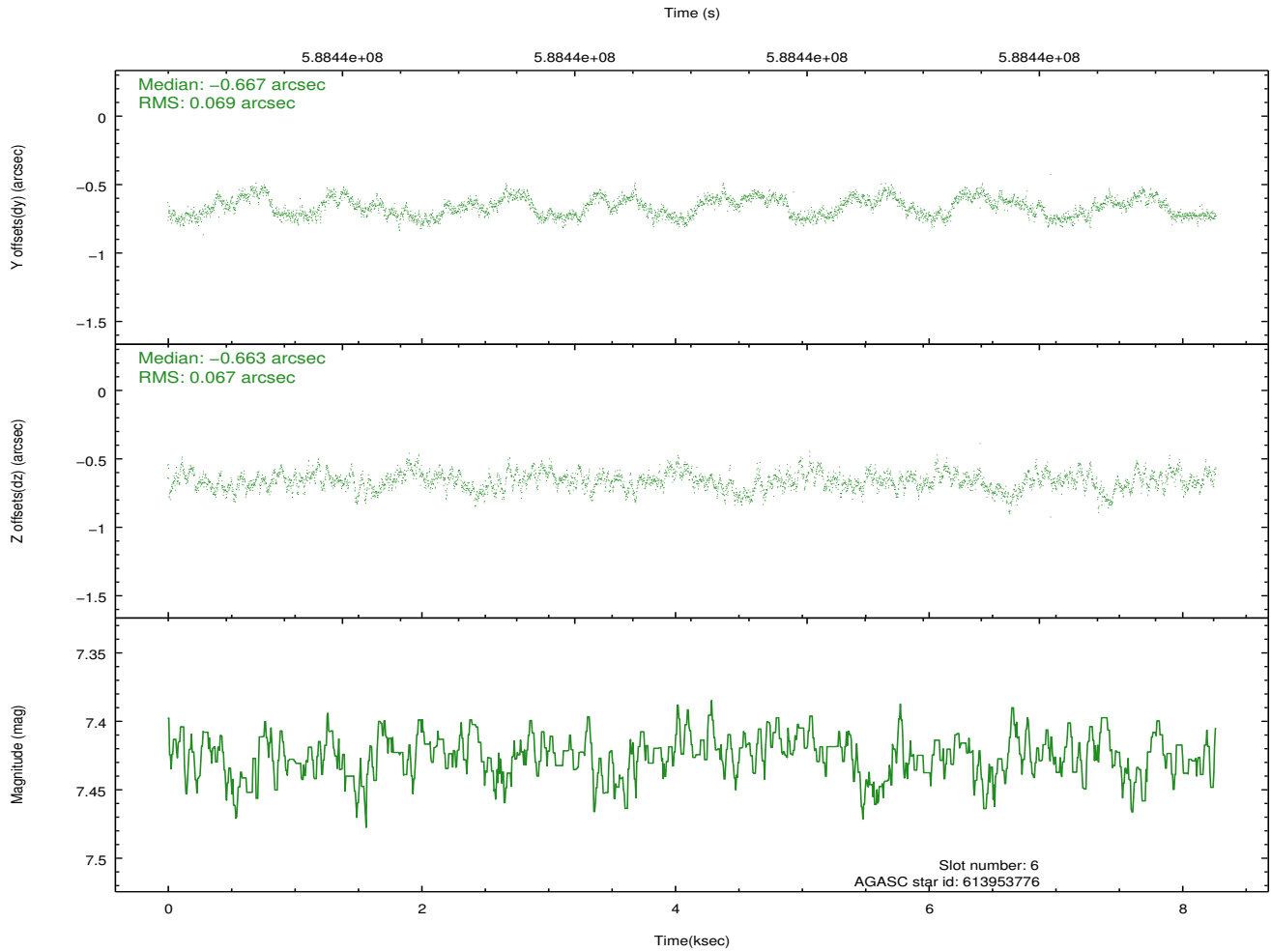
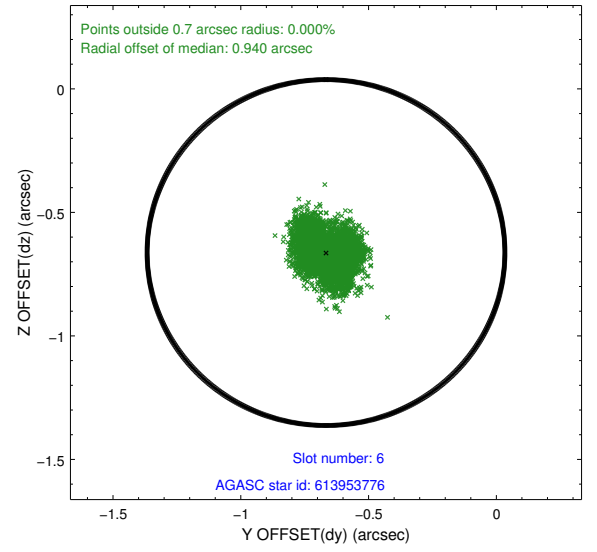
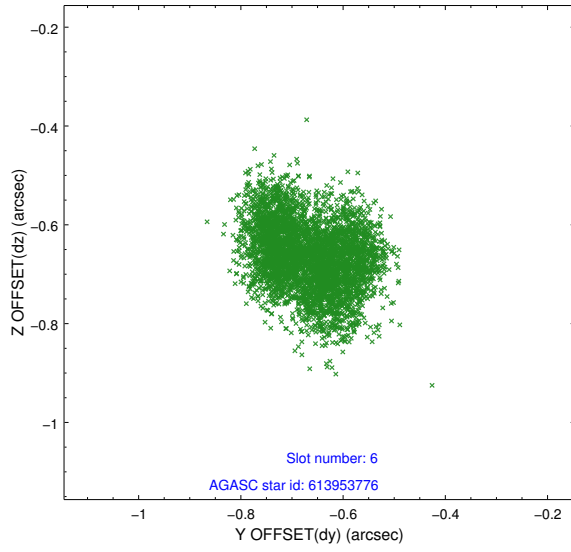
2.4.2 Slot 4



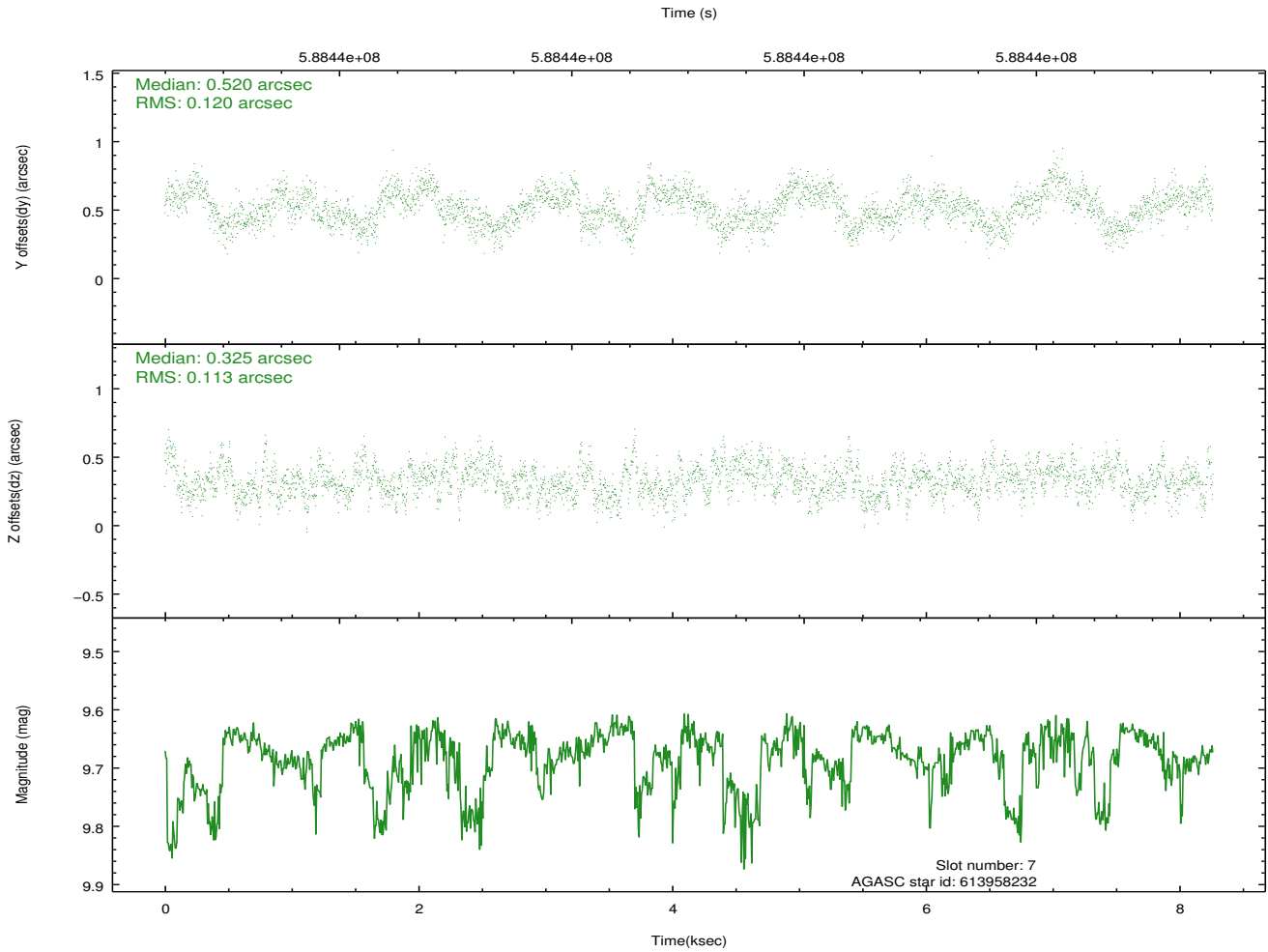
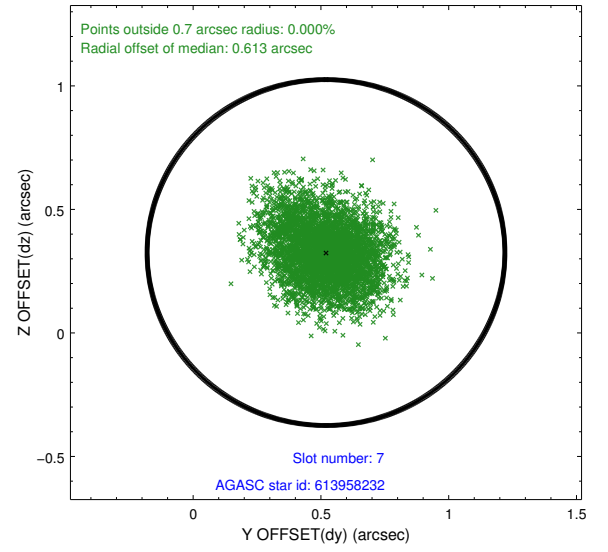
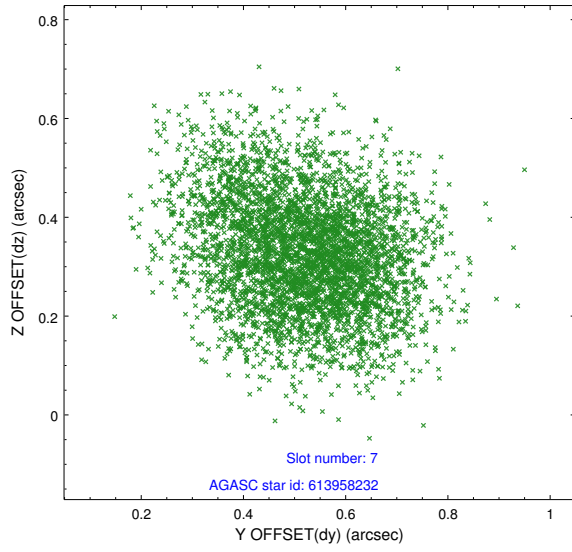
2.4.3 Slot 5



2.4.4 Slot 6

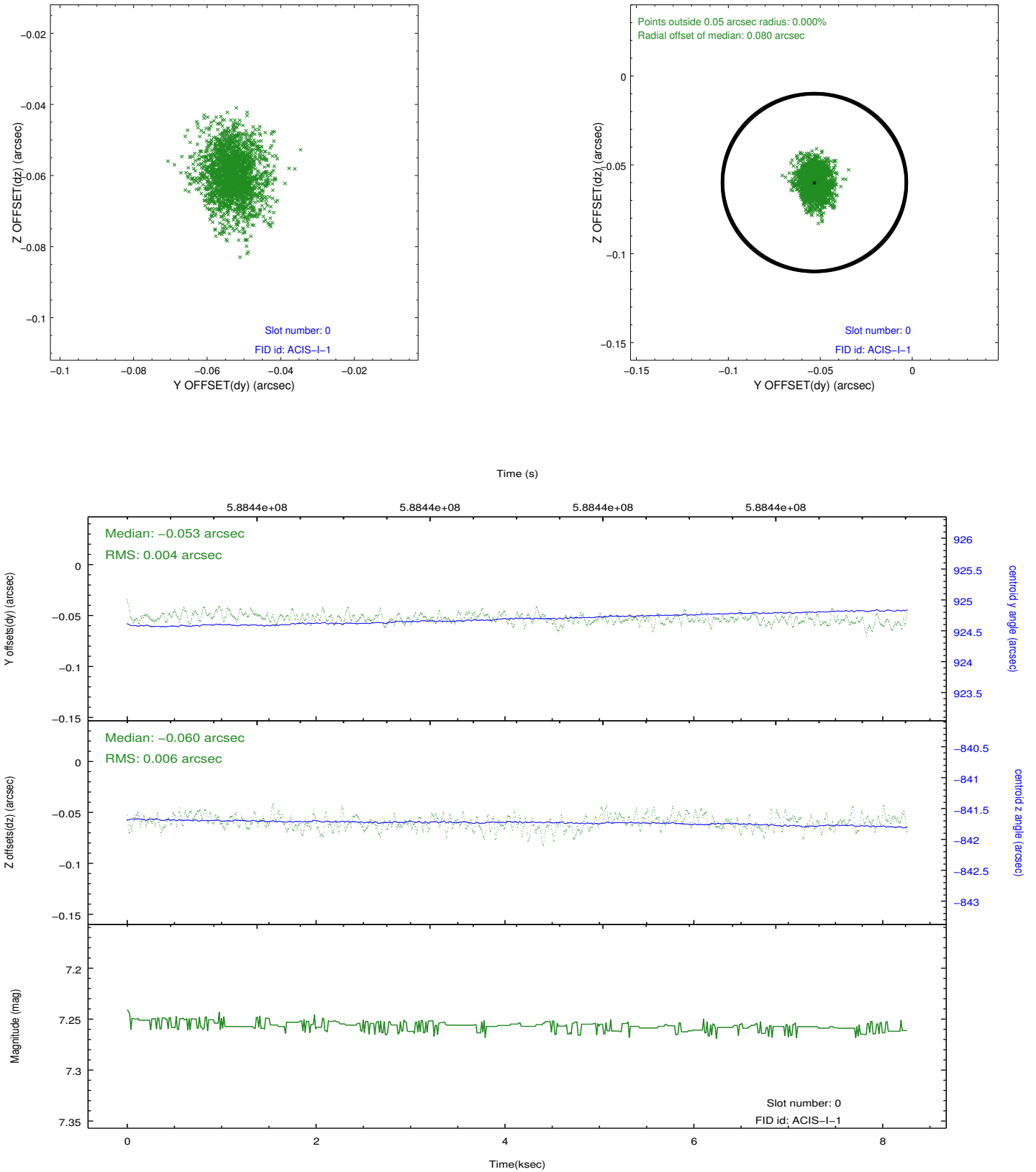


2.4.5 Slot 7

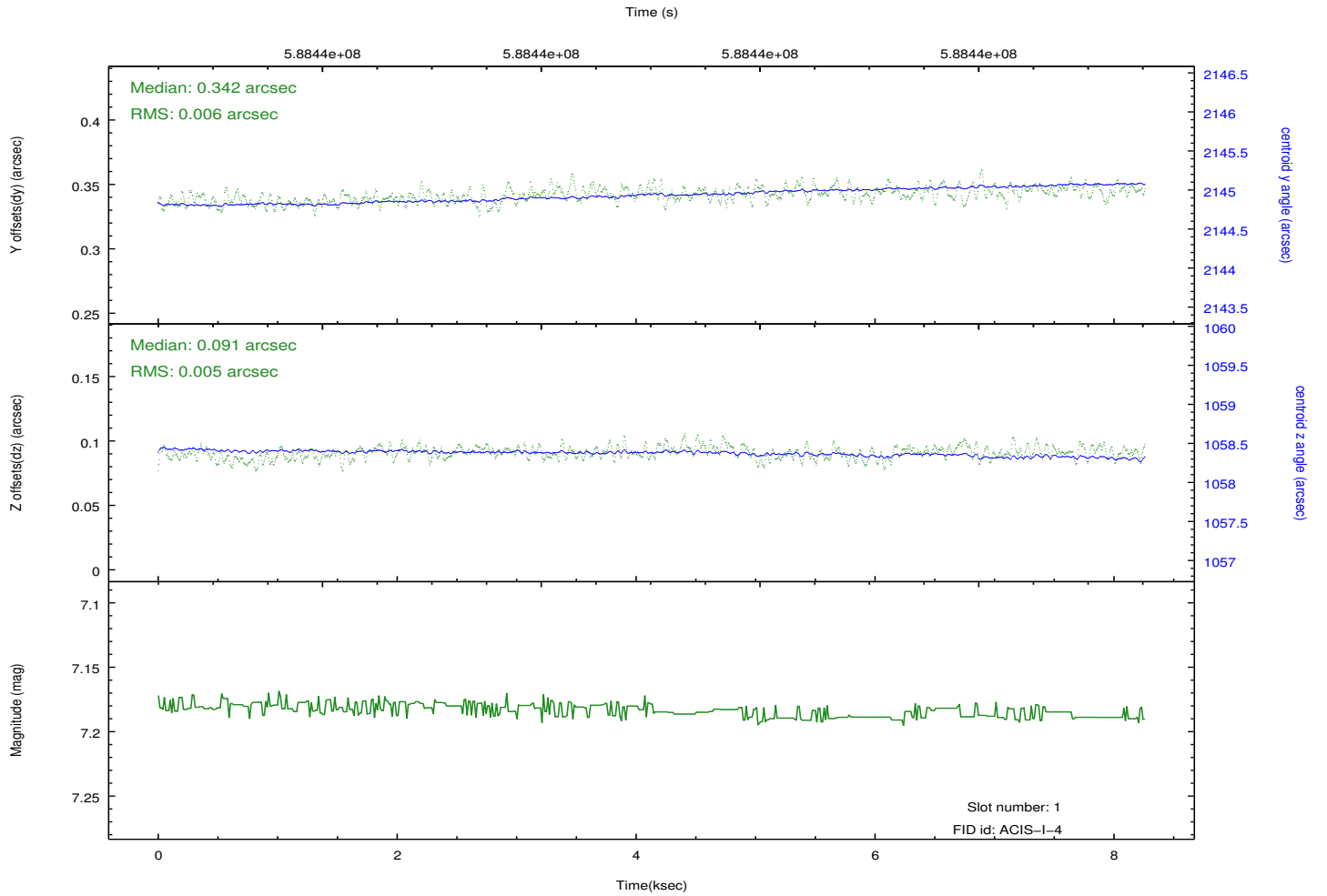
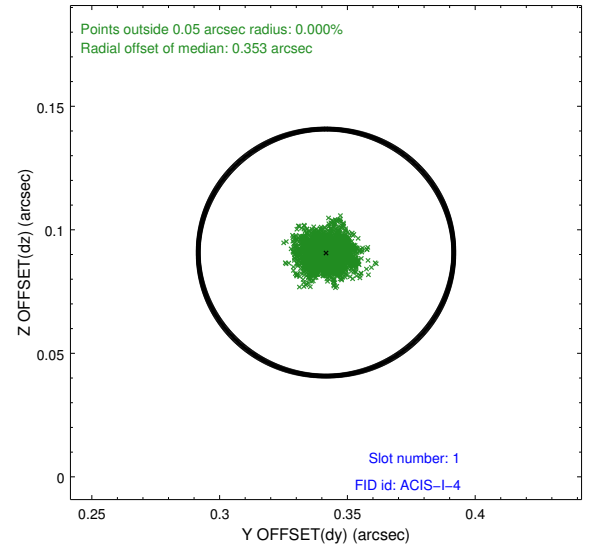
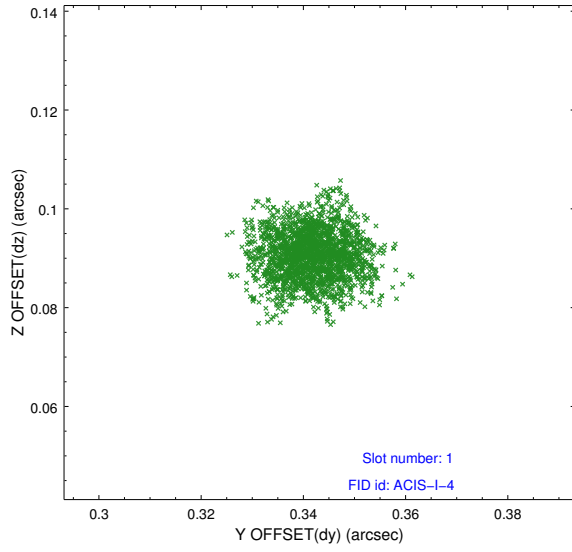


2.5 FID Slots

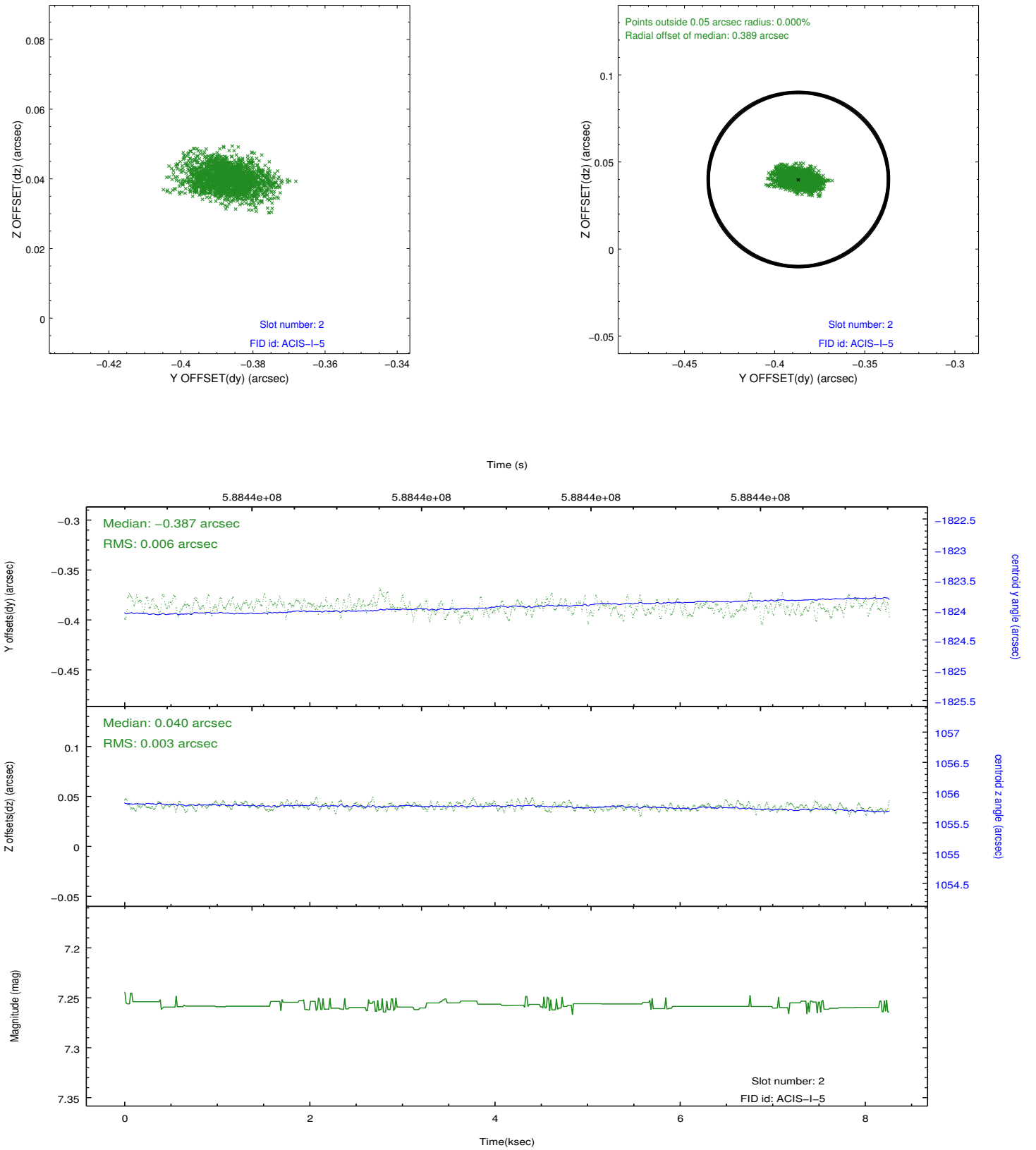
2.5.1 Slot 0



2.5.2 Slot 1



2.5.3 Slot 2



A Summary

A.1 Status

V&V Scientist	Joy Nichols
V&V Date (YYYY-MM-DD)	2016.08.25
V&V Edition	1
V&V Disposition and Status	OK
V&V Charge Time	8.0595393463373

A.2 Comments