

V&V Reference Report

L2 ASCDS Version : 10.5.1.1

Observation 18463 - L2 Version 1
Chandra X-Ray Center

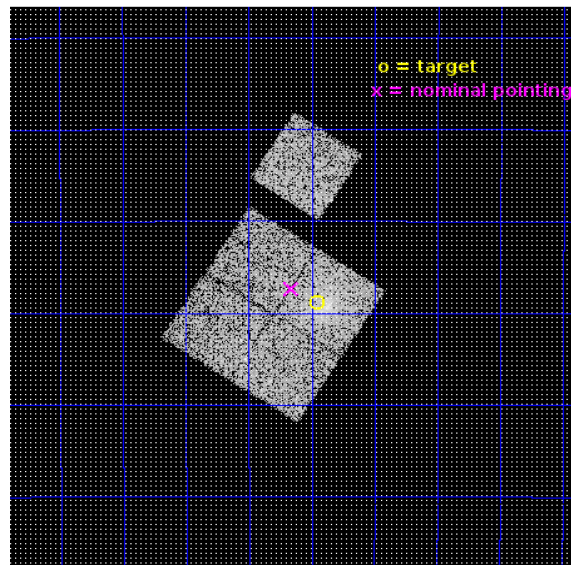
L2 Processing Date : Oct 13 2016

Contents

1	Front	2
2	OBI	3
2.1	OBI	3
2.1.1	Images	3
2.1.2	Bias	3
2.1.3	Parameters	4
2.1.4	Events	4
2.2	Compared Parameters	5
2.3	Aspect	6
2.4	Star Slots	9
2.4.1	Slot 3	9
2.4.2	Slot 4	10
2.4.3	Slot 5	11
2.4.4	Slot 6	12
2.4.5	Slot 7	13
2.5	FID Slots	14
2.5.1	Slot 0	14
2.5.2	Slot 1	15
2.5.3	Slot 2	16
A	Summary	17
A.1	Status	17
A.2	Comments	17

1 Front

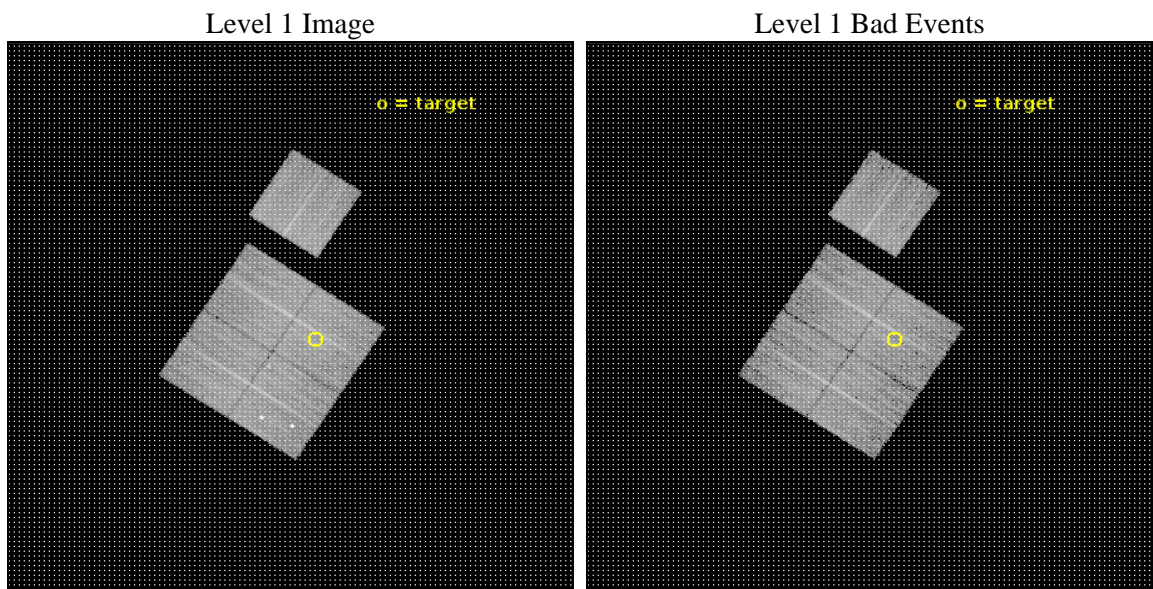
seq_num	801622	Sequence number
obs_id	18463	Observation id
title	Completing Chandra Snapshots of the Planck Cosmology Sample	Propos
observer	Ralph Kraft	Principal investigator
object	G222.97-65.69	Source name
dtcycle	0	
cycle	P	events from which exps? Prim/Second/Both
ra_targ	40.365	Observer's specified target RA [deg]
dec_targ	-28.6475	Observer's specified target Dec [deg]
ra_nom	40.41506427522	Nominal RA [deg]
dec_nom	-28.62263110168	Nominal Dec [deg]
roll_nom	32.84292179578	Nominal Roll [deg]
revision	1	Processing version of data
ontime	10068.382221937	Sum of GTIs [s]
livetime	9936.8313959724	Livetime [s]
ontime0	10068.259101987	Sum of GTIs [s]
ontime1	10065.159041643	Sum of GTIs [s]
ontime2	10068.341181993	Sum of GTIs [s]
ontime3	10068.382221937	Sum of GTIs [s]
ontime6	10068.218061924	Sum of GTIs [s]
l2events	33813	Number of level 2 events



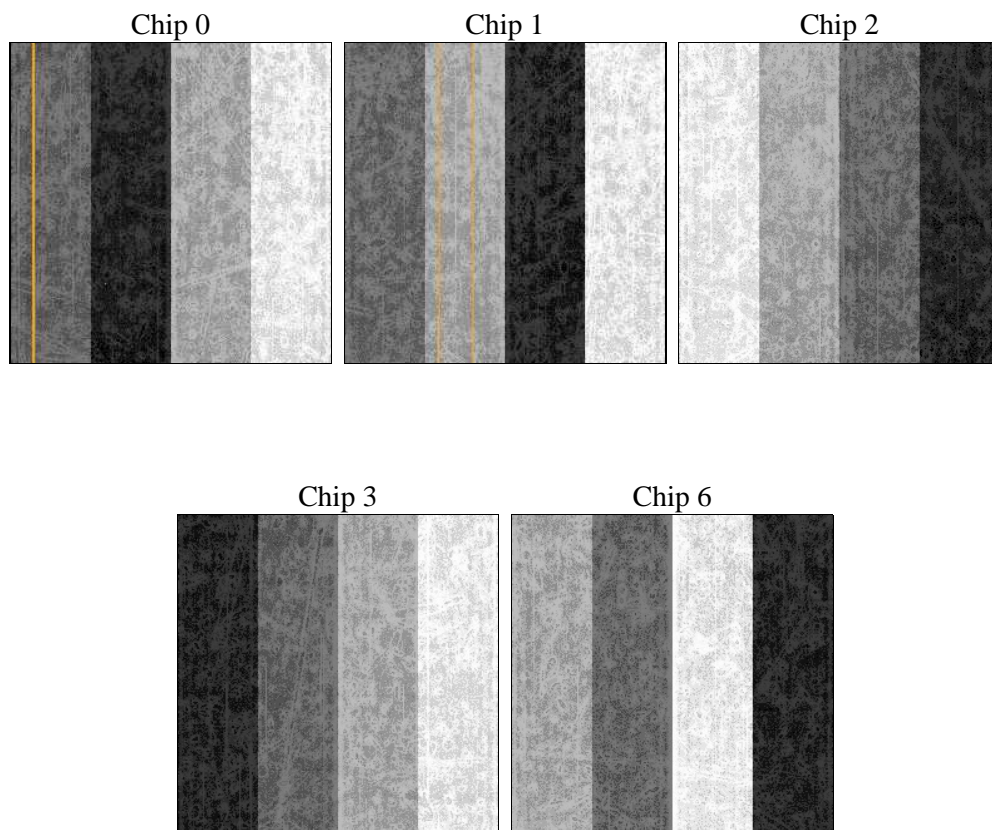
2 OBI

2.1 OBI

2.1.1 Images



2.1.2 Bias



2.1.3 Parameters

obi_num	0	Obi number	sched_exp_time	10000.000000	[s] Scheduled observation exposure time
ascdsver	10.5.1.1	Processing system revision	ontime	10068.382221937	Sum of GTIs [s]
caldsver	4.7.2	 	ontime0	10068.259101987	Sum of GTIs [s]
date	2016-10-14T02:49:43	Date and time of file creation	ontime1	10065.159041643	Sum of GTIs [s]
revision	1	Processing version of data	ontime2	10068.341181993	Sum of GTIs [s]
			ontime3	10068.382221937	Sum of GTIs [s]
			ontime6	10068.218061924	Sum of GTIs [s]
			l1events	342757	Number of level 1 events

2.1.4 Events

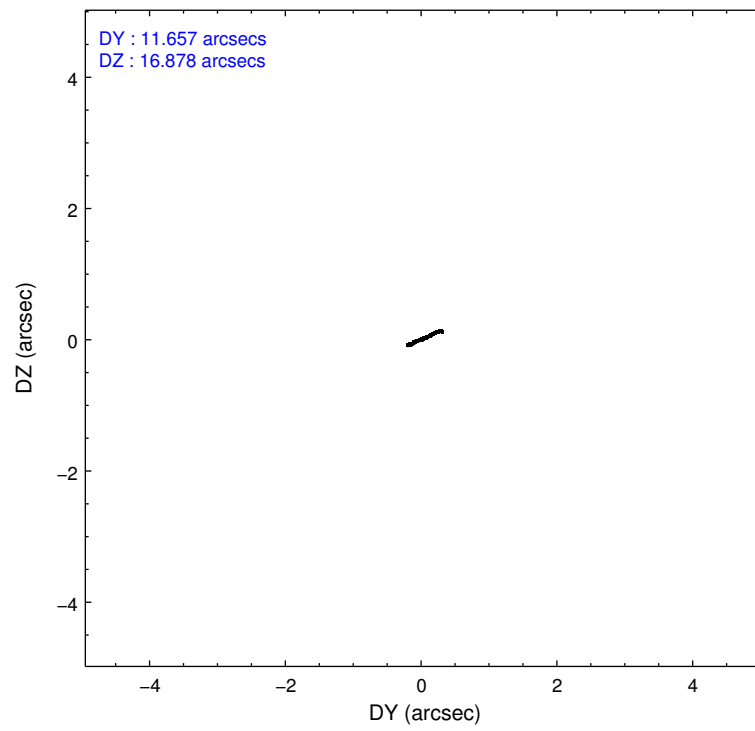
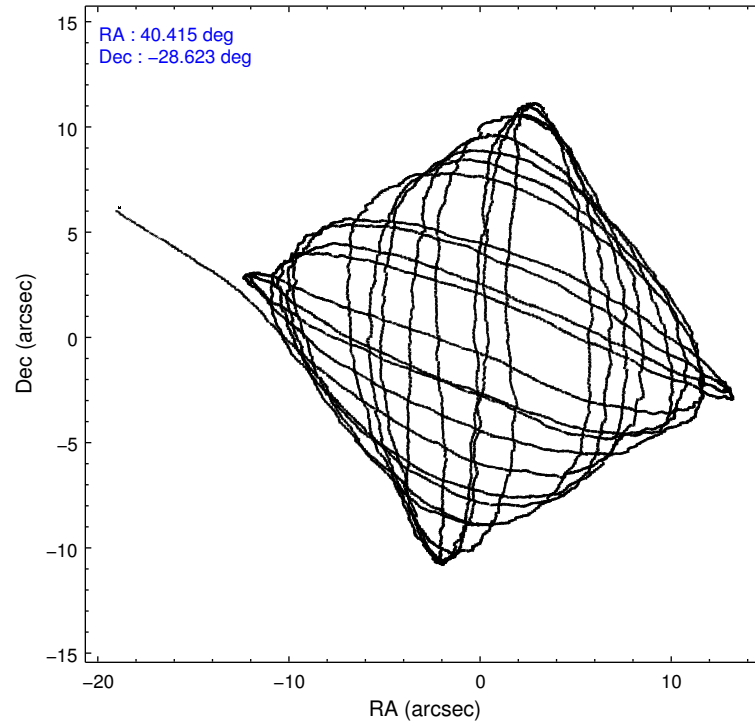
	ccd 0	ccd 1	ccd 2	ccd 3	ccd 6
level 1 events	64540	72738	67730	69080	68669
rejected events	57247	59162	60792	59464	60991
rejected %	88%	81%	89%	86%	88%

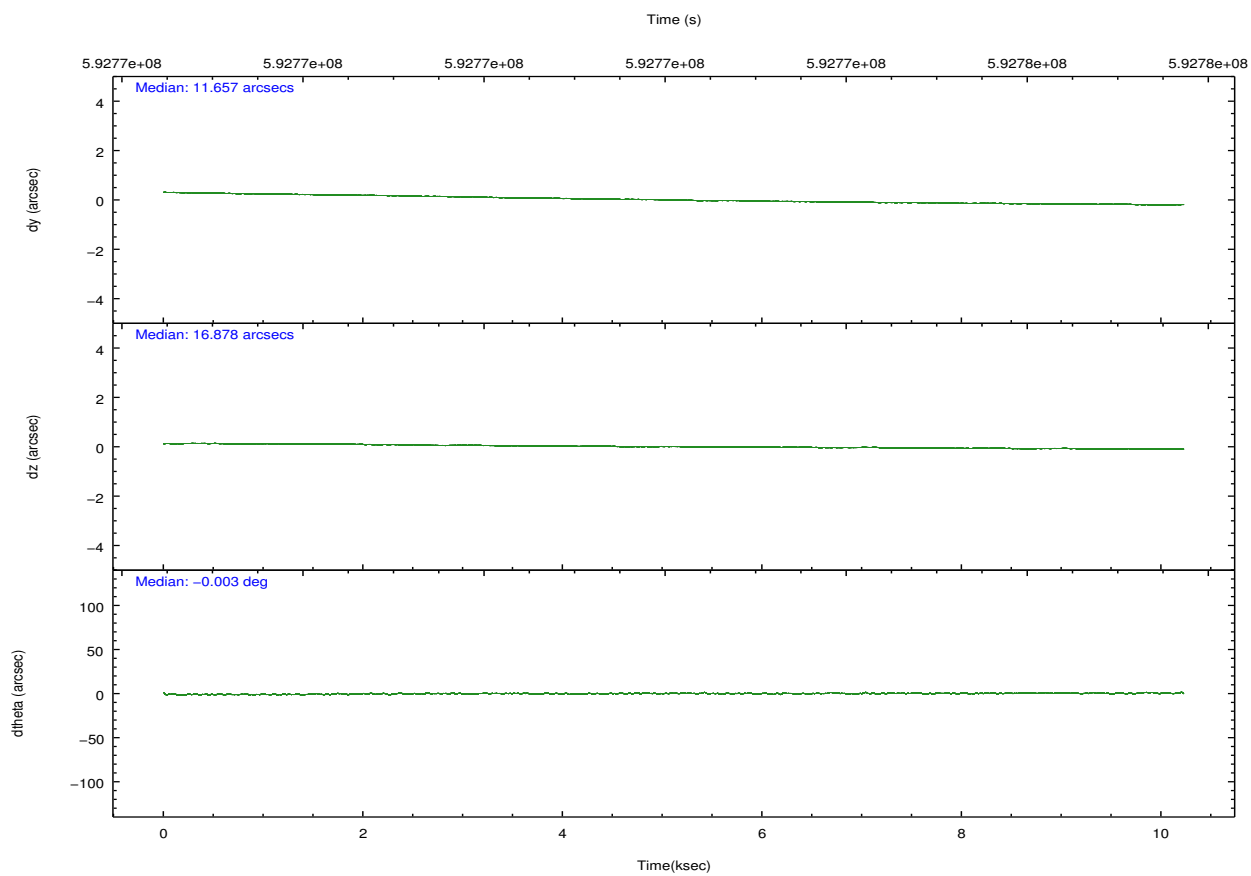
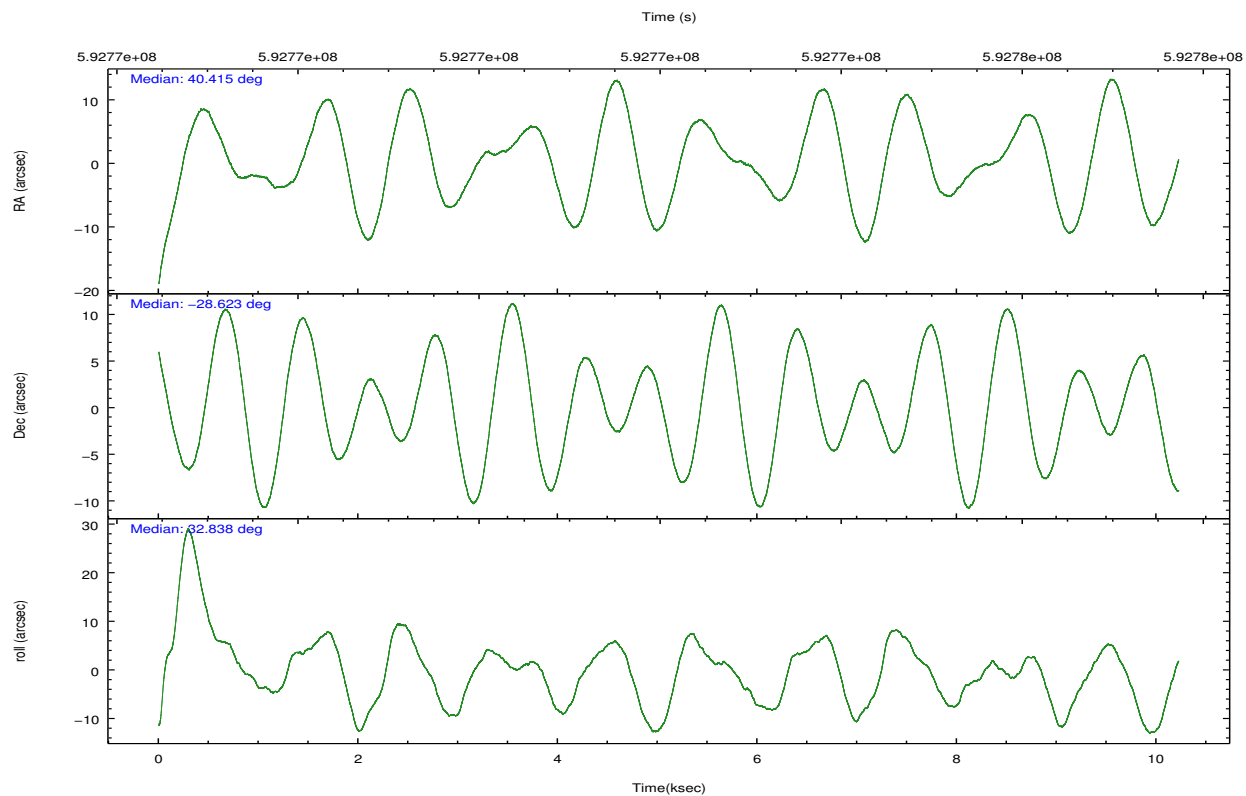
	ccd 0	ccd 1	ccd 2	ccd 3	ccd 6
grade 0 events	2400	8158	2496	4570	2466
	3%	11%	3%	6%	3%
grade 1 events	46	94	41	33	38
	0%	0%	0%	0%	0%
grade 2 events	1838	2005	1569	1783	1885
	2%	2%	2%	2%	2%
grade 3 events	744	717	717	851	772
	1%	0%	1%	1%	1%
grade 4 events	724	762	744	865	652
	1%	1%	1%	1%	0%
grade 5 events	2776	2857	2576	3209	2866
	4%	3%	3%	4%	4%
grade 6 events	1592	1946	1420	1550	1908
	2%	2%	2%	2%	2%
grade 7 events	54420	56199	58167	56219	58082
	84%	77%	85%	81%	84%

2.2 Compared Parameters

Parameter	Planned	Actual	Parameter	Planned	Actual
Instrument	ACIS	ACIS	Obspar format version number	7	7
Detector	ACIS-01236	ACIS-01236	Obspar file type	PREDICTED	ACTUAL
Grating	NONE	NONE	Obspar update status	NONE	UPDATED
Data mode	VFAINT	VFAINT	CCD I0 on	Y	Y
Observation mode	POINTING	POINTING	CCD I1 on	Y	Y
[deg] Pointing RA	40.400878	40.41506427522003	CCD I2 on	Y	Y
[deg] Pointing Dec	-28.647237	-28.62263110168049	CCD I3 on	Y	Y
[deg] Pointing Roll	32.627454	32.84292179577965	CCD S0 on	N	N
[mm] SIM focus pos	-0.782348	-0.7809083437167272	CCD S1 on	N	N
[mm] SIM defocus	0	0.001439871863259334	CCD S2 on	O1	Y
[mm] SIM translation stage pos	-225.840463	-225.8433433320239	CCD S3 on	N	N
[mm] SIM translation stage offset	-7.752	-7.749109670905796	CCD S4 on	N	N
[s] Observation start time (MET)	592767204.184000	592766243.18038	CCD S5 on	N	N
Observation start date	2016-10-13T17:32:16	2016-10-13T17:17:23	Number of optional ACIS chips dropped	0	0
[s] Observation end time (MET)	592777204.184000	592777612.99354	On-chip summing requested	N	N
Observation end date	2016-10-13T20:18:56	2016-10-13T20:26:52	Subarray requested	NONE	NONE
Read mode	TIMED	TIMED	Alternating exposures requested	N	N
			[s] Primary exposure time	0.000000	3.1

2.3 Aspect



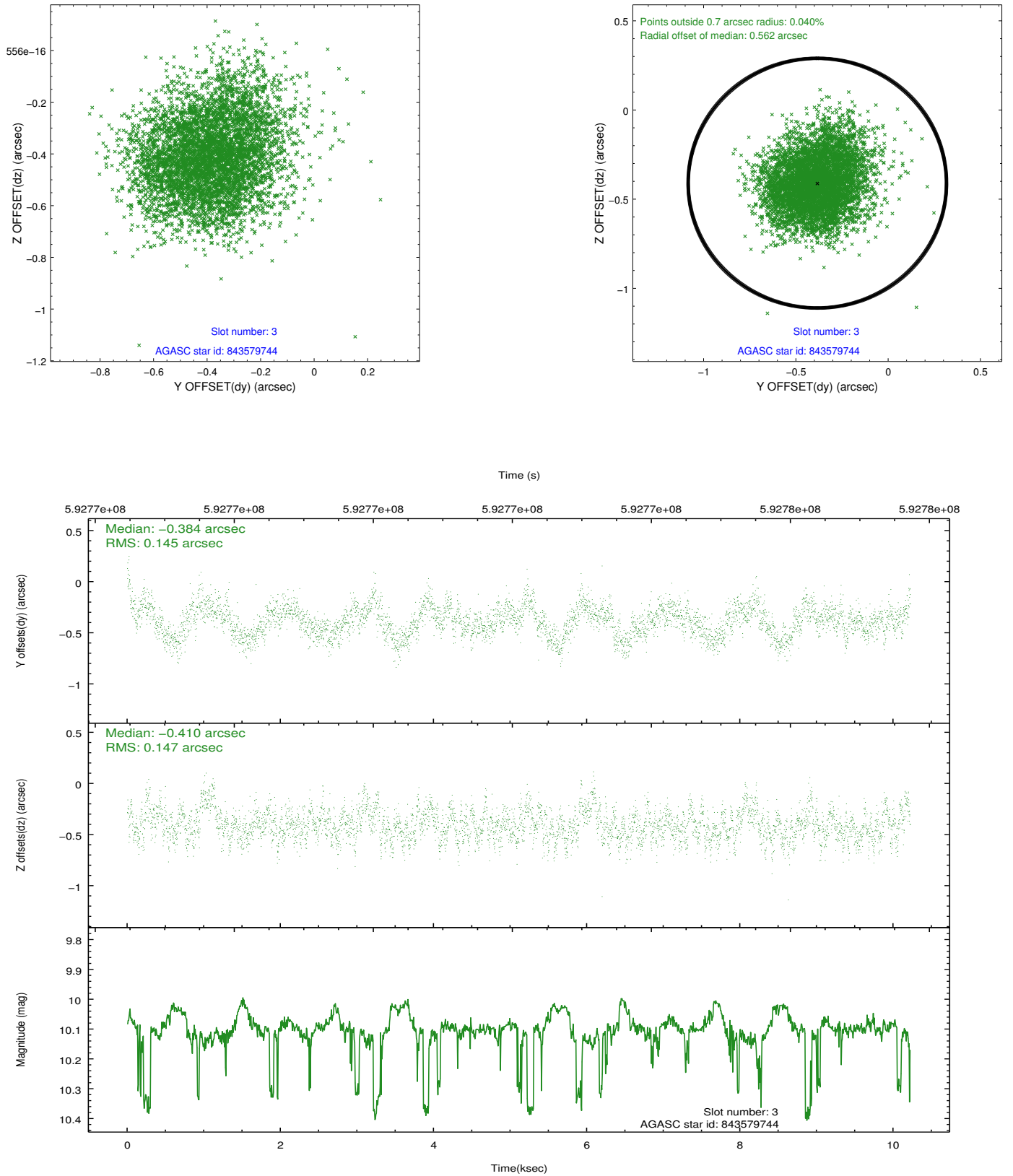


Slot Statistics

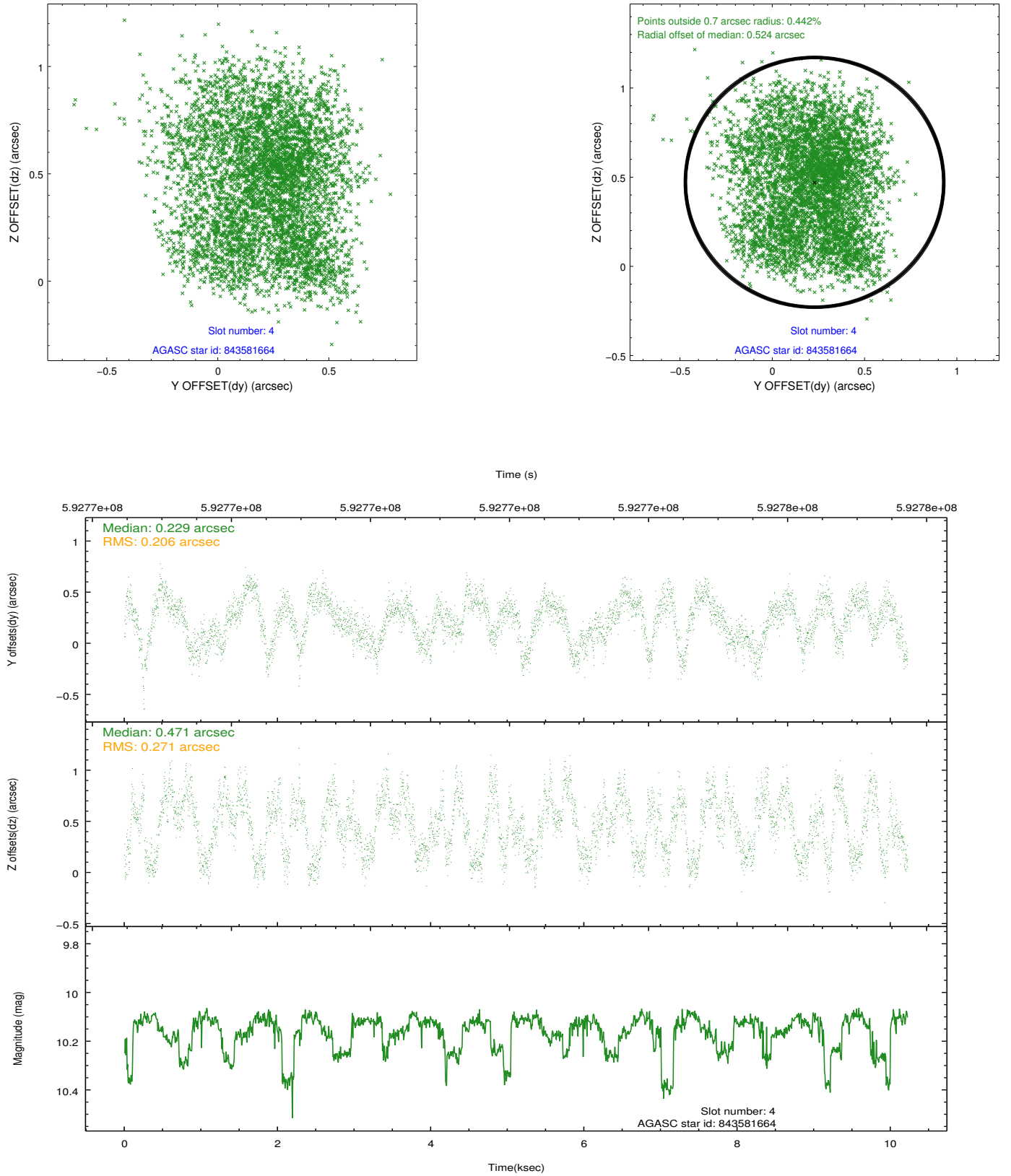
slot	status	used	id	mag	n_pts	med_dy	med_dz	dr1	dr2	ra	dec	mean_y	mean_z
0	FID		ACIS-I-1	7.26	2494	0.179	-0.133	0.008	0.025	0.000000	0.000000	927.93	-999.73
1	FID		ACIS-I-5	7.25	2494	-0.410	0.116	0.007	0.014	0.000000	0.000000	-1820.52	897.62
2	FID		ACIS-I-6	7.28	2494	0.141	0.086	0.008	0.016	0.000000	0.000000	392.82	1542.73
3	GUIDE	used	843579744	10.10	4972	-0.384	-0.410	0.221	0.348	40.103306	-29.216145	-1892.29	-1222.35
4	GUIDE	used	843581664	10.15	4975	0.229	0.471	0.379	0.545	40.899224	-29.094258	451.23	-2203.09
5	GUIDE	used	843584944	8.54	4985	0.103	0.011	0.139	0.241	39.796646	-28.298174	-937.53	2085.84
6	GUIDE	used	843587704	6.79	4987	-0.206	-0.156	0.118	0.195	40.710340	-28.151324	1788.85	973.29
7	GUIDE	used	843588592	9.71	4973	0.285	0.090	0.188	0.293	39.571356	-28.560294	-2044.34	1670.28

2.4 Star Slots

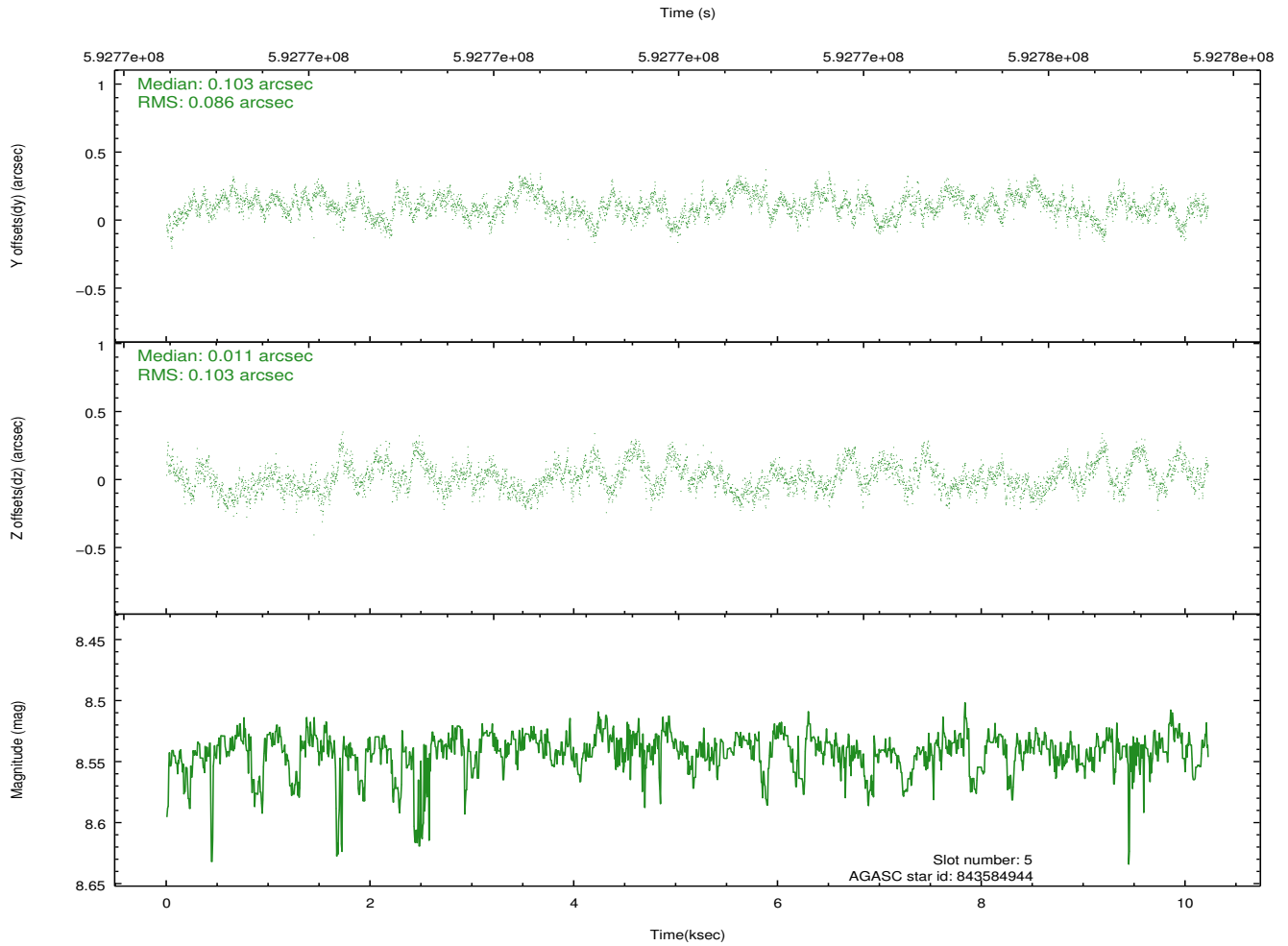
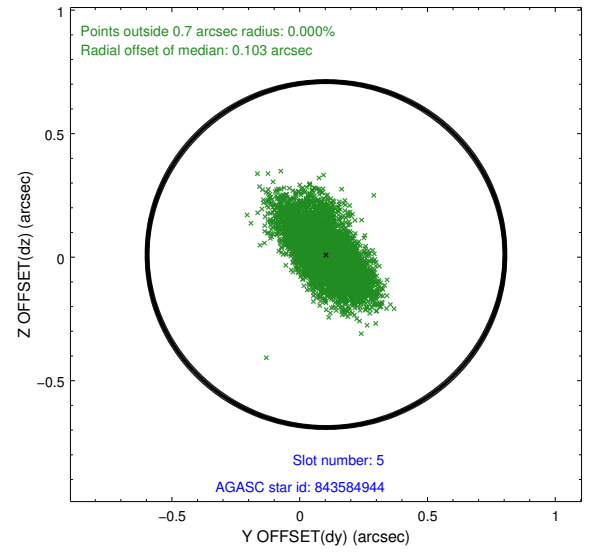
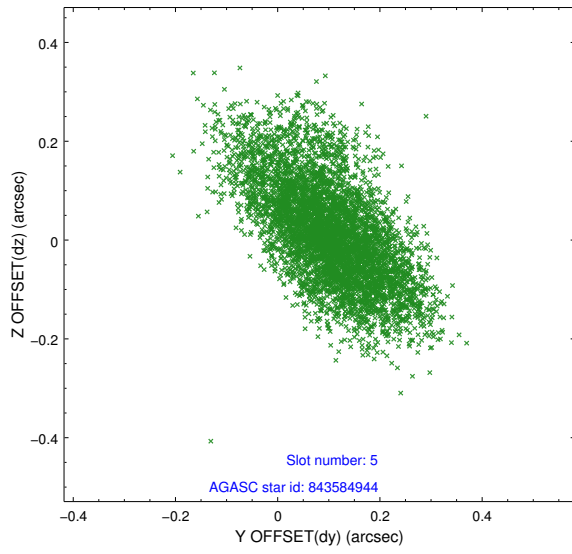
2.4.1 Slot 3



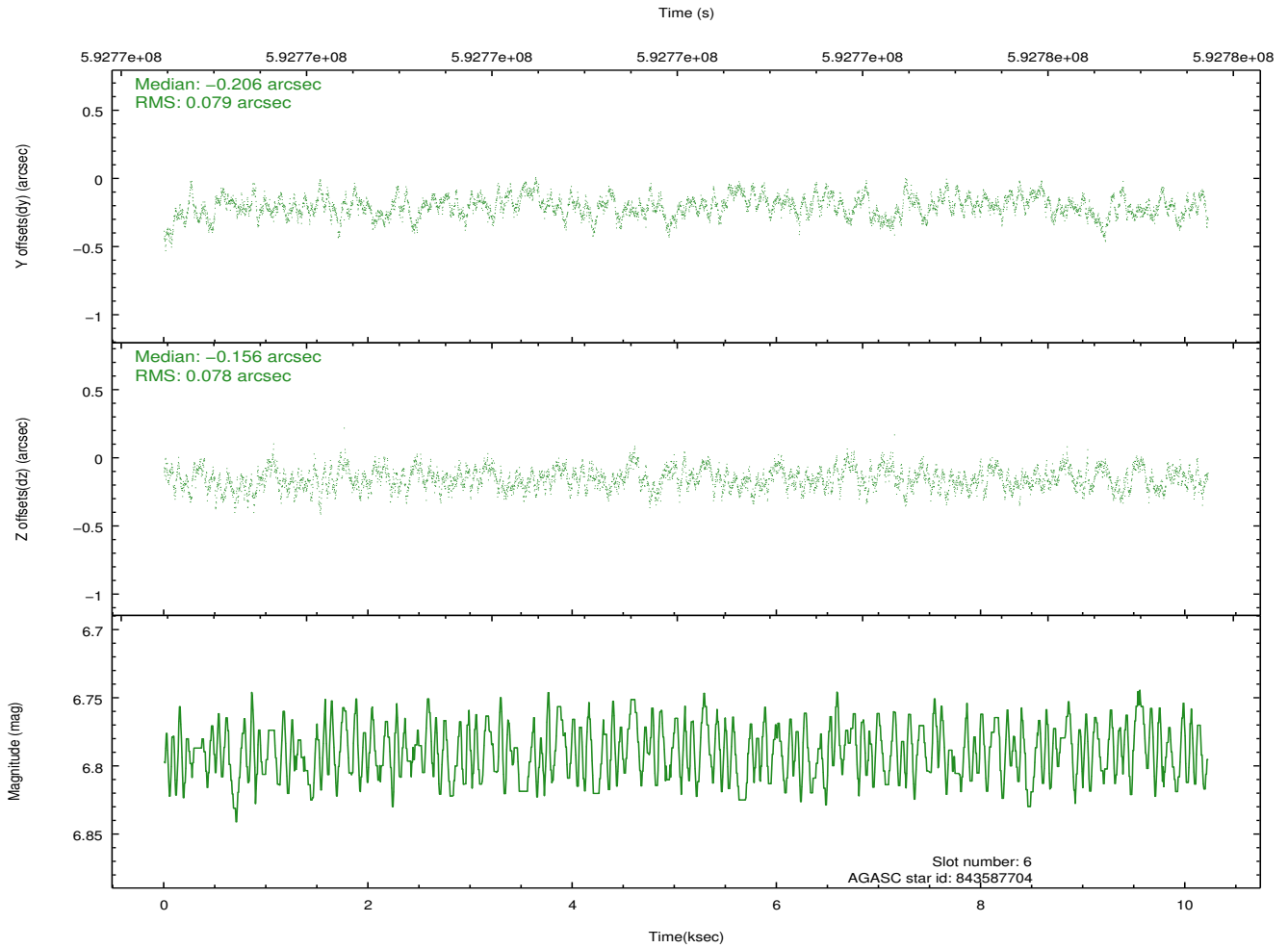
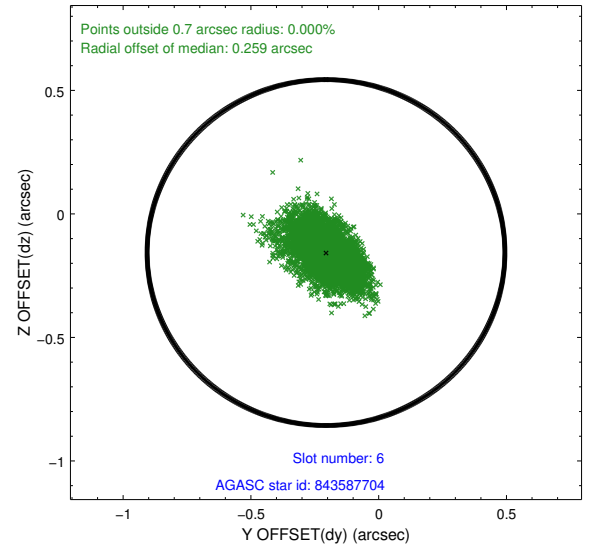
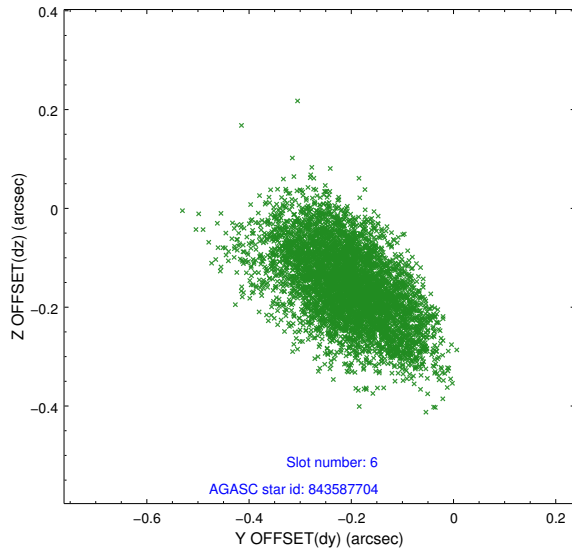
2.4.2 Slot 4



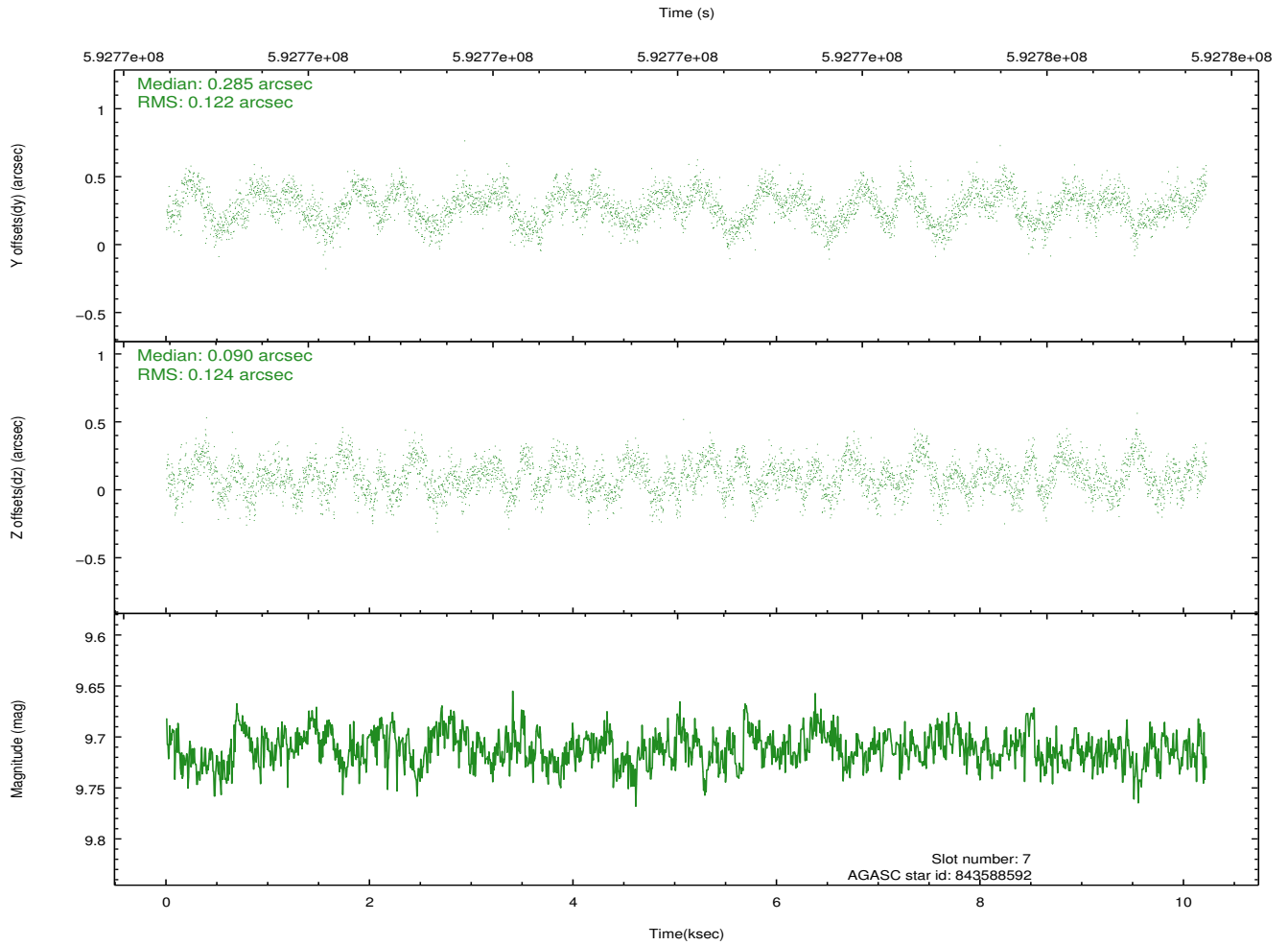
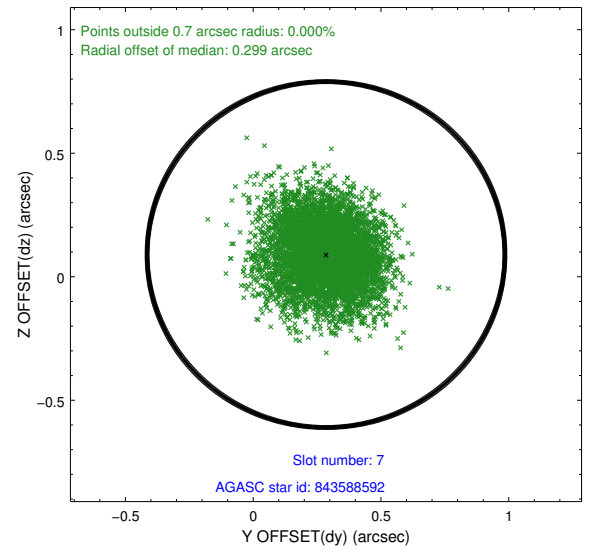
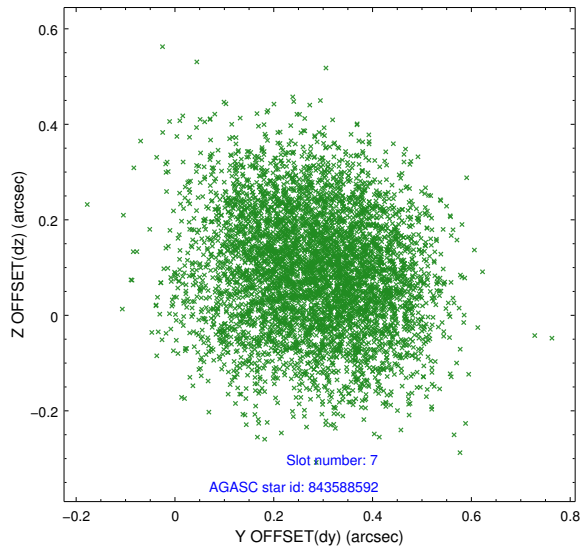
2.4.3 Slot 5



2.4.4 Slot 6

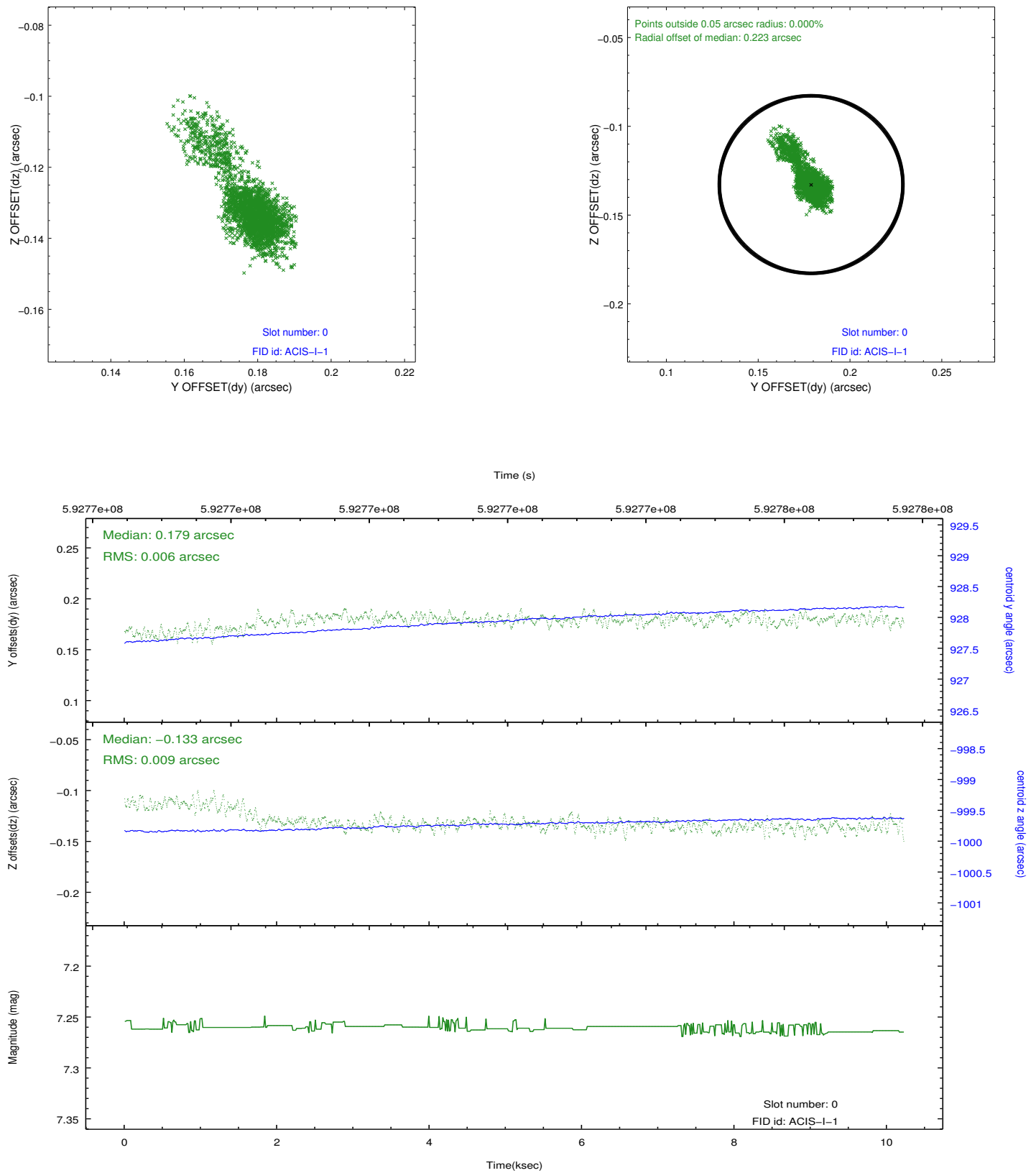


2.4.5 Slot 7

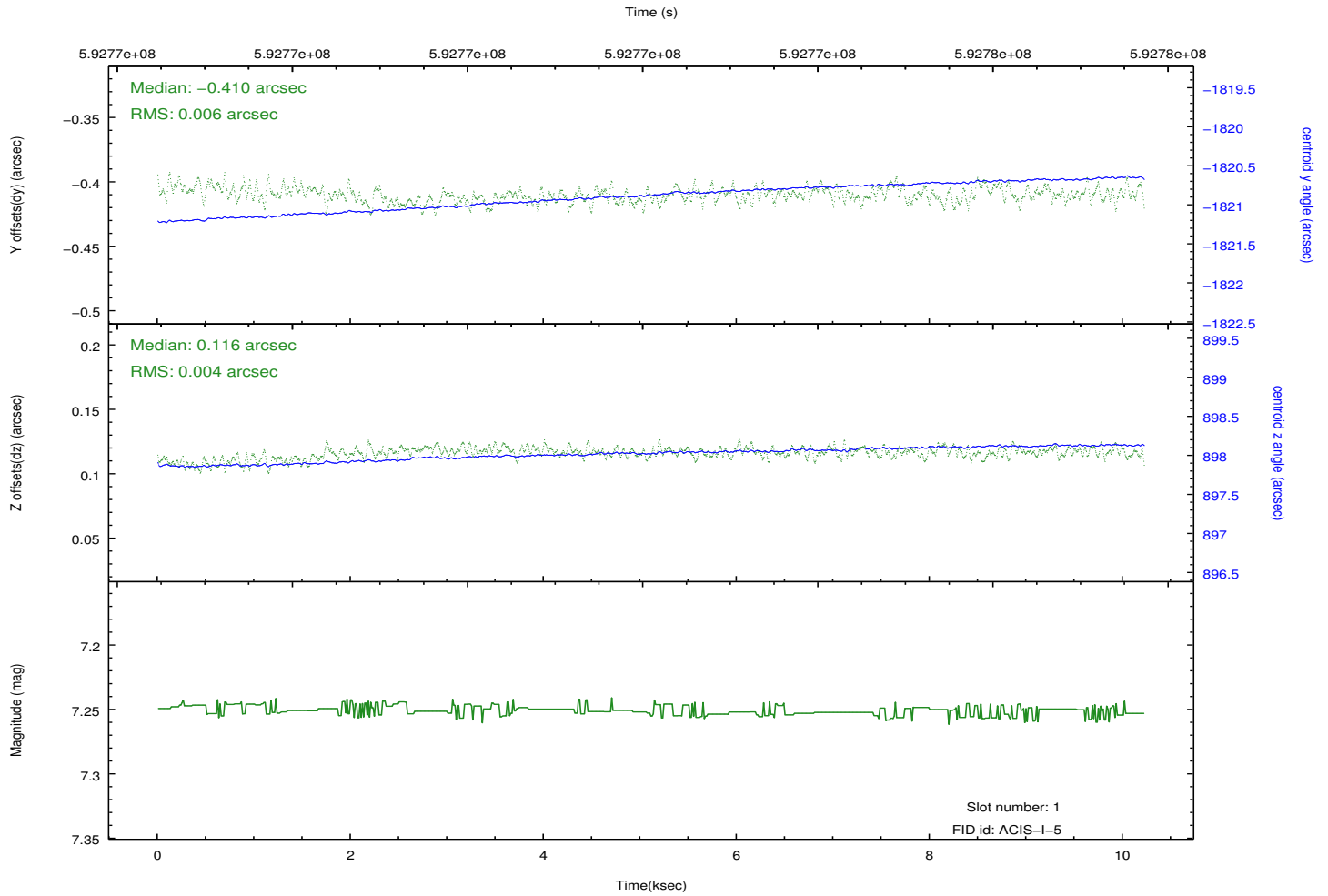
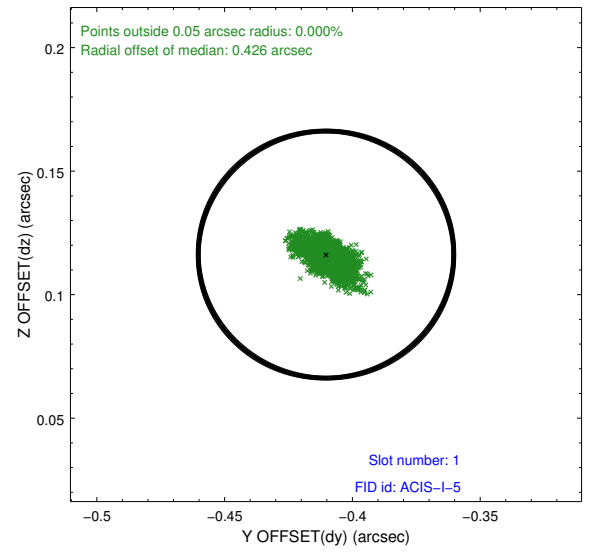
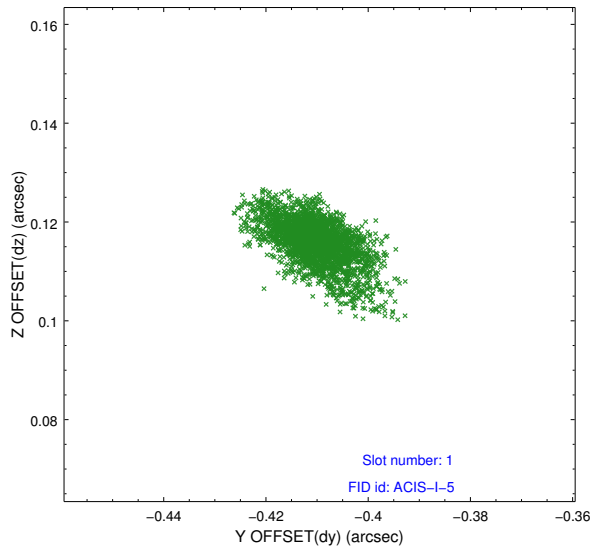


2.5 FID Slots

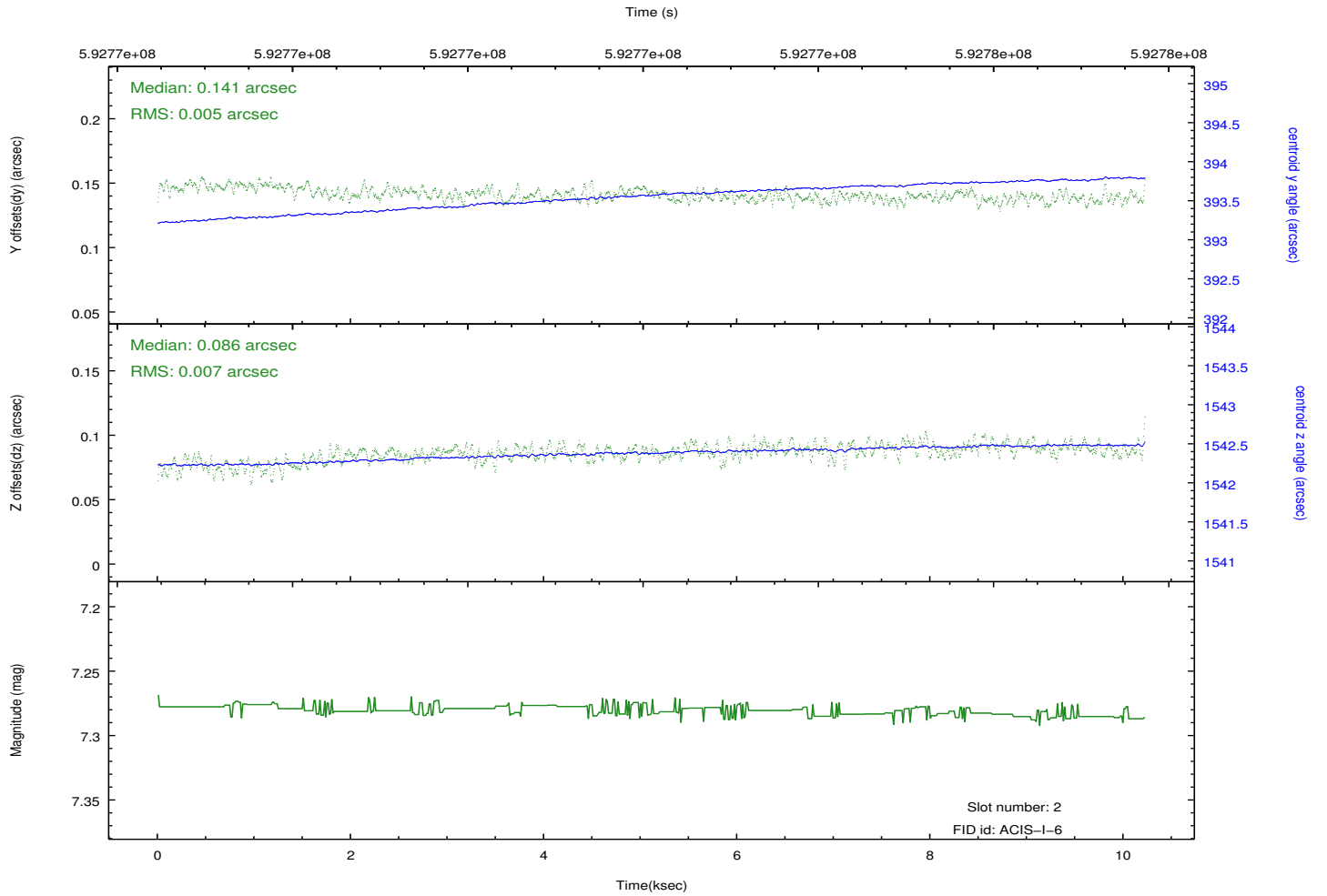
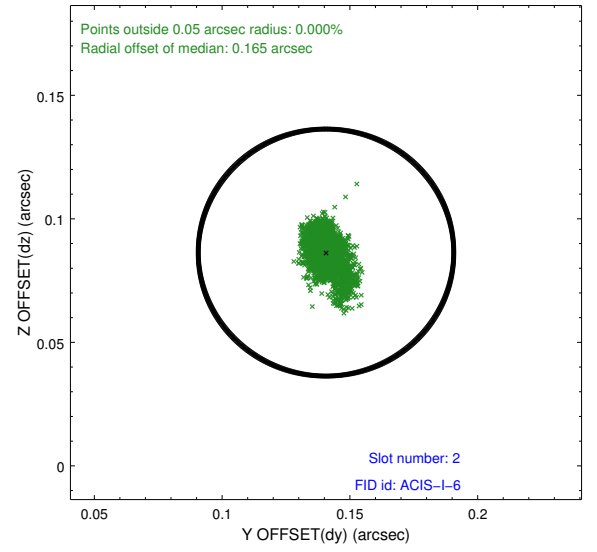
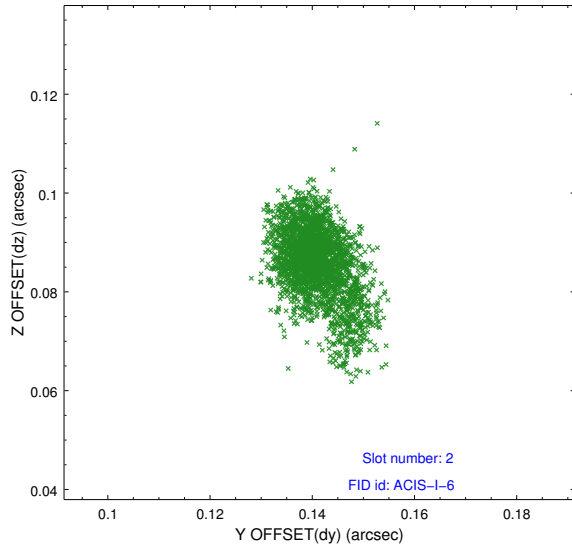
2.5.1 Slot 0



2.5.2 Slot 1



2.5.3 Slot 2



A Summary

A.1 Status

V&V Scientist	Joy Nichols
V&V Date (YYYY-MM-DD)	2016.10.14
V&V Edition	1
V&V Disposition and Status	OK
V&V Charge Time	10.068382221937

A.2 Comments