

# V&V Reference Report

## L2 ASCDS Version : 10.5.1.1

Observation 18263 - L2 Version 1  
Chandra X-Ray Center

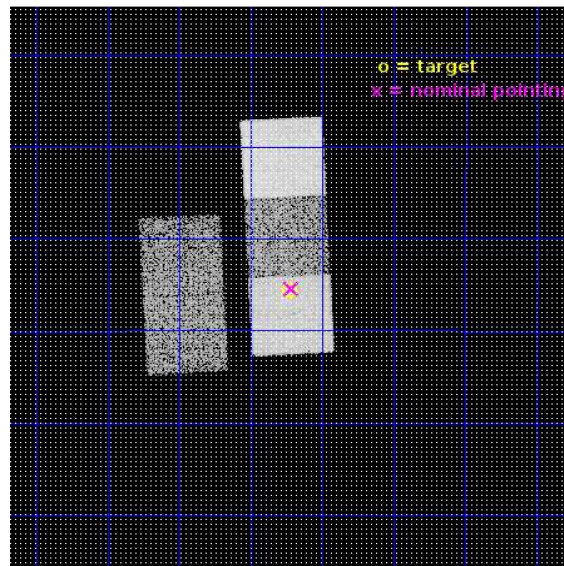
L2 Processing Date : Sep 29 2016

## Contents

<b>1</b>	<b>Front</b>	<b>2</b>
<b>2</b>	<b>OBI</b>	<b>3</b>
2.1	OBI . . . . .	3
2.1.1	Images . . . . .	3
2.1.2	Bias . . . . .	3
2.1.3	Parameters . . . . .	4
2.1.4	Events . . . . .	4
2.2	Compared Parameters . . . . .	5
2.3	Aspect . . . . .	6
2.4	Star Slots . . . . .	9
2.4.1	Slot 3 . . . . .	9
2.4.2	Slot 4 . . . . .	10
2.4.3	Slot 5 . . . . .	11
2.4.4	Slot 6 . . . . .	12
2.4.5	Slot 7 . . . . .	13
2.5	FID Slots . . . . .	14
2.5.1	Slot 0 . . . . .	14
2.5.2	Slot 1 . . . . .	15
2.5.3	Slot 2 . . . . .	16
<b>A</b>	<b>Summary</b>	<b>17</b>
A.1	Status . . . . .	17
A.2	Comments . . . . .	17

# 1 Front

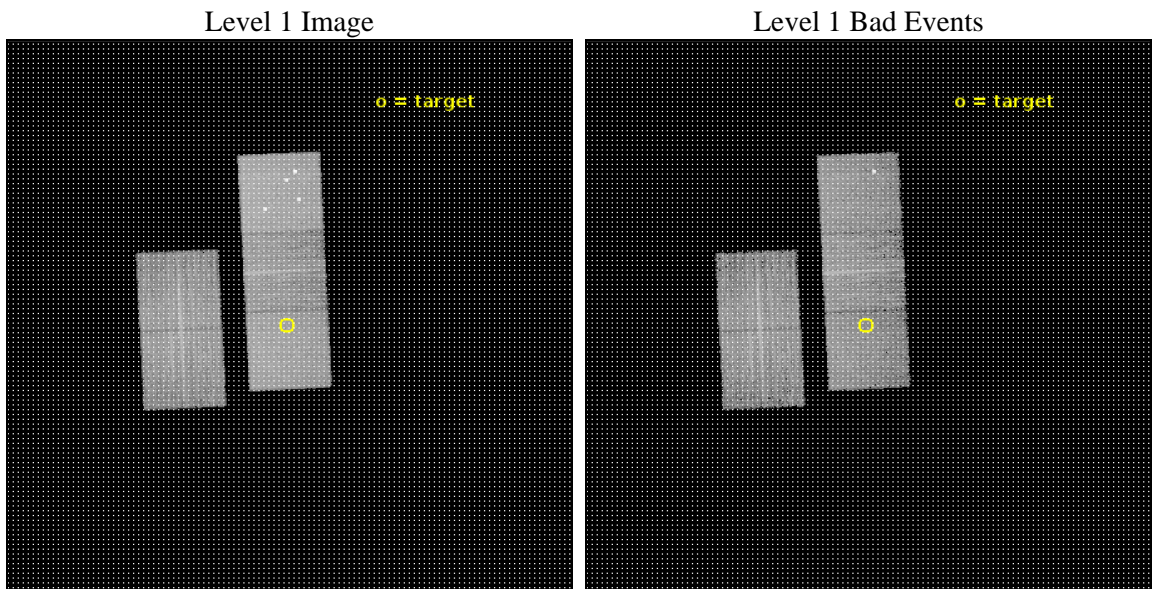
seq_num	801587	Sequence number
obs_id	18263	Observation id
title	Building a complete sample of $z>1$ XXL galaxy clusters	Proposal tit
observer	Dr Ben Maughan	Principal investigator
object	XLSSU J021744.1-034536	Source name
dtcycle	0	&#160
cycle	P	events from which exps? Prim/Second/Both
ra_targ	34.432917	Observer's specified target RA [deg]
dec_targ	-3.76	Observer's specified target Dec [deg]
ra_nom	34.429492825747	Nominal RA [deg]
dec_nom	-3.7568472401961	Nominal Dec [deg]
roll_nom	87.156415028051	Nominal Roll [deg]
revision	1	Processing version of data
ontime	10762.101937652	Sum of GTIs [s]
livetime	10621.487152892	Livetime [s]
ontime2	10758.796737432	Sum of GTIs [s]
ontime3	10761.978817701	Sum of GTIs [s]
ontime5	10762.060897708	Sum of GTIs [s]
ontime6	10762.019857645	Sum of GTIs [s]
ontime7	10762.101937652	Sum of GTIs [s]
l2events	109345	Number of level 2 events



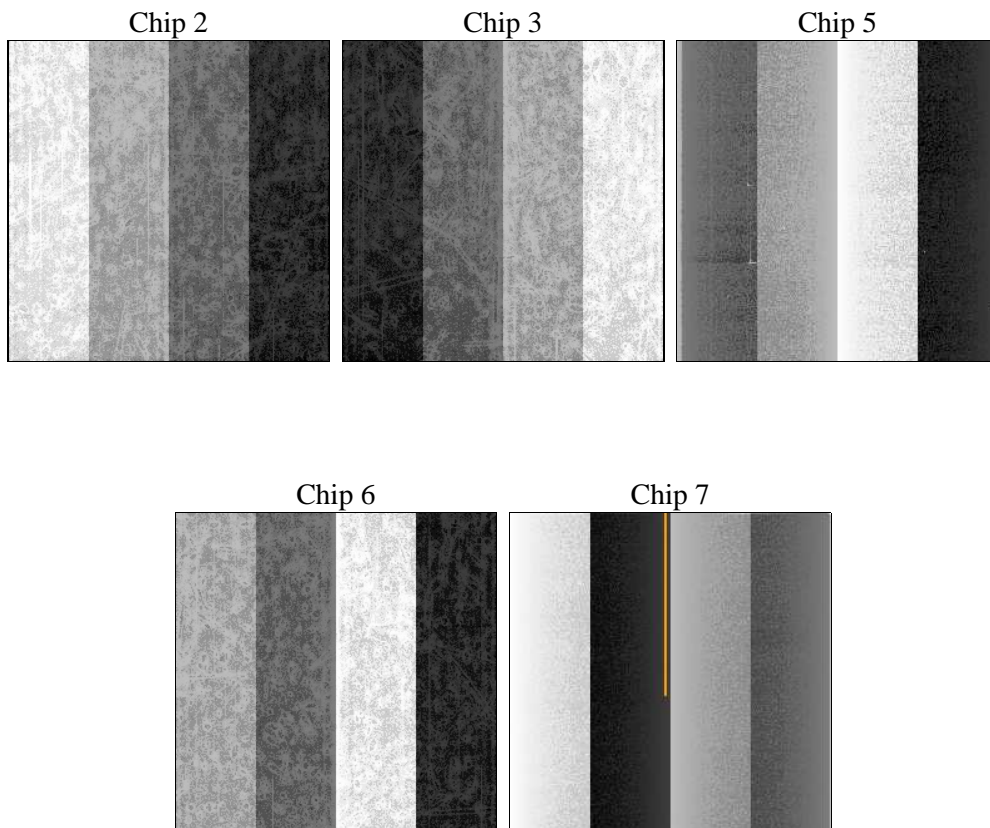
## 2 OBI

### 2.1 OBI

#### 2.1.1 Images



#### 2.1.2 Bias



### 2.1.3 Parameters

obi_num	0	Obi number	sched_exp_time	10701.667000	[s] Scheduled observation exposure time
ascdsver	10.5.1.1	Processing system revision	ontime	10762.101937652	Sum of GTIs [s]
caldsver	4.7.2	&#160	ontime2	10758.796737432	Sum of GTIs [s]
date	2016-09-29T19:56:56	Date and time of file creation	ontime3	10761.978817701	Sum of GTIs [s]
revision	1	Processing version of data	ontime5	10762.060897708	Sum of GTIs [s]
			ontime6	10762.019857645	Sum of GTIs [s]
			ontime7	10762.101937652	Sum of GTIs [s]
			l1events	418131	Number of level 1 events

### 2.1.4 Events

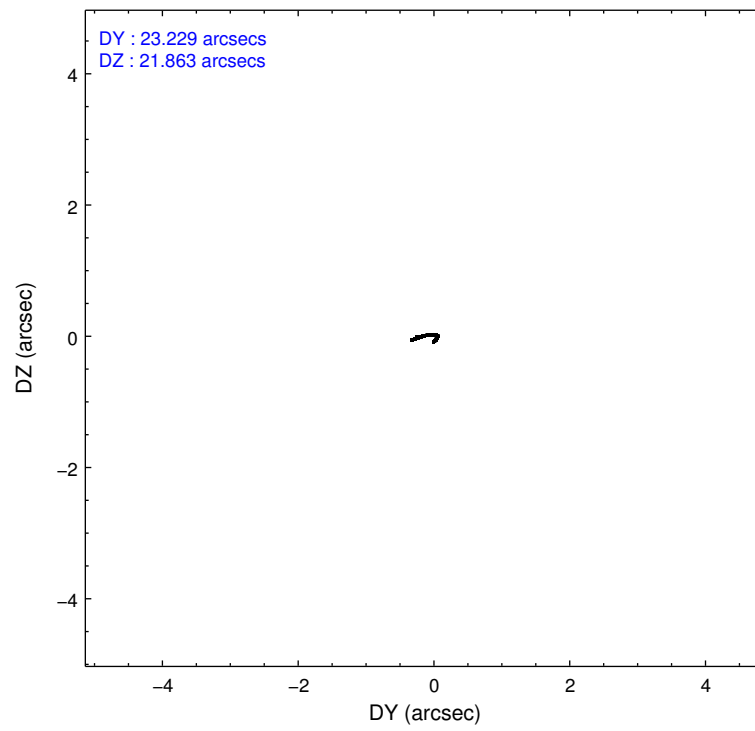
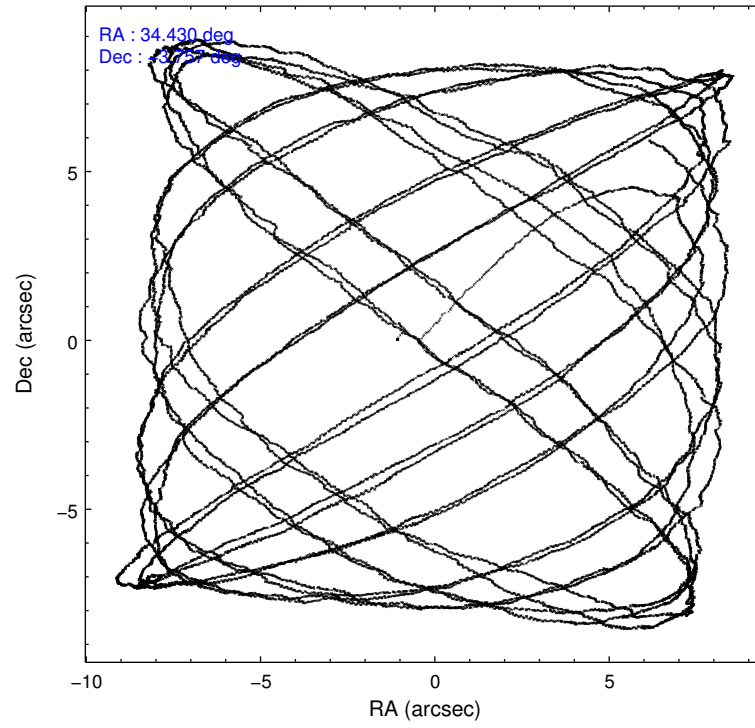
	ccd 2	ccd 3	ccd 5	ccd 6	ccd 7
level 1 events	68135	67637	122266	69489	90604
rejected events	60595	60371	60385	61449	50955
rejected %	88%	89%	49%	88%	56%

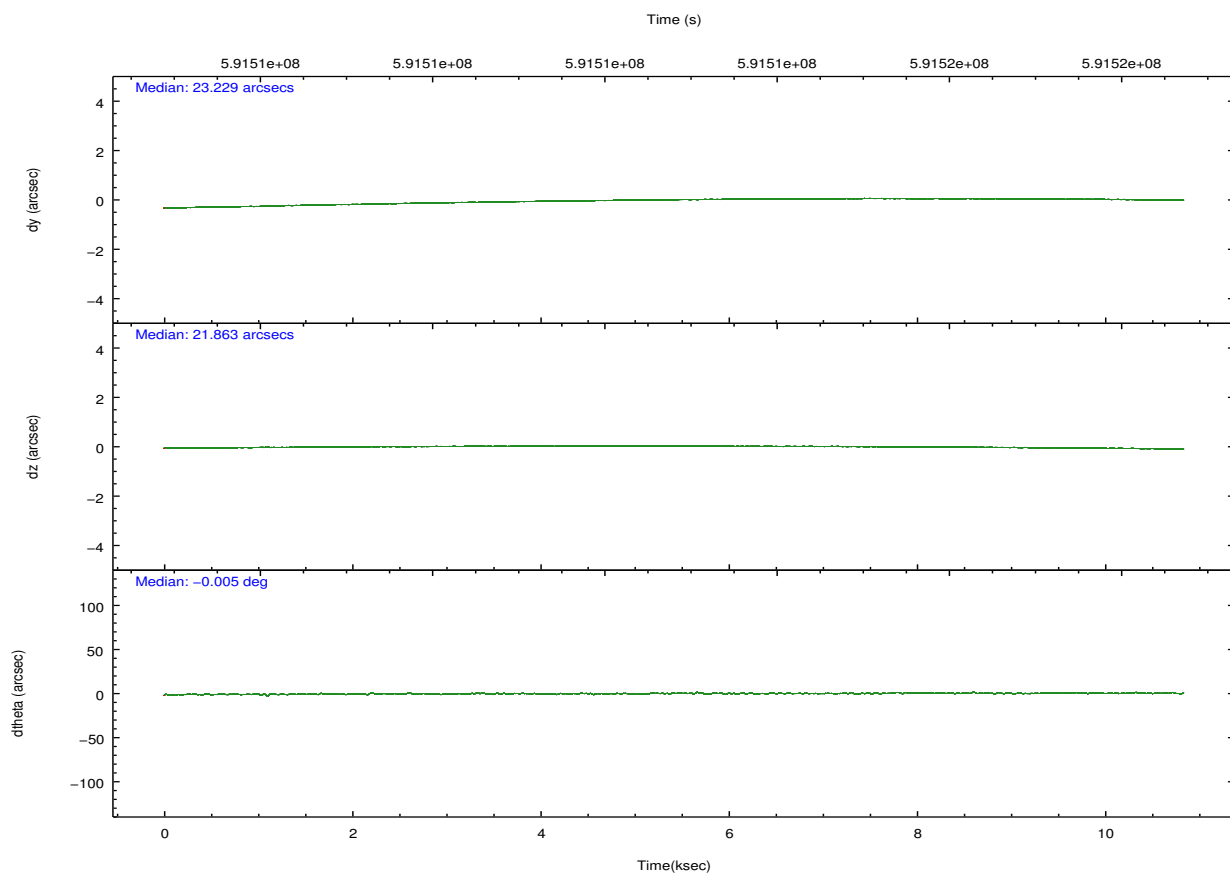
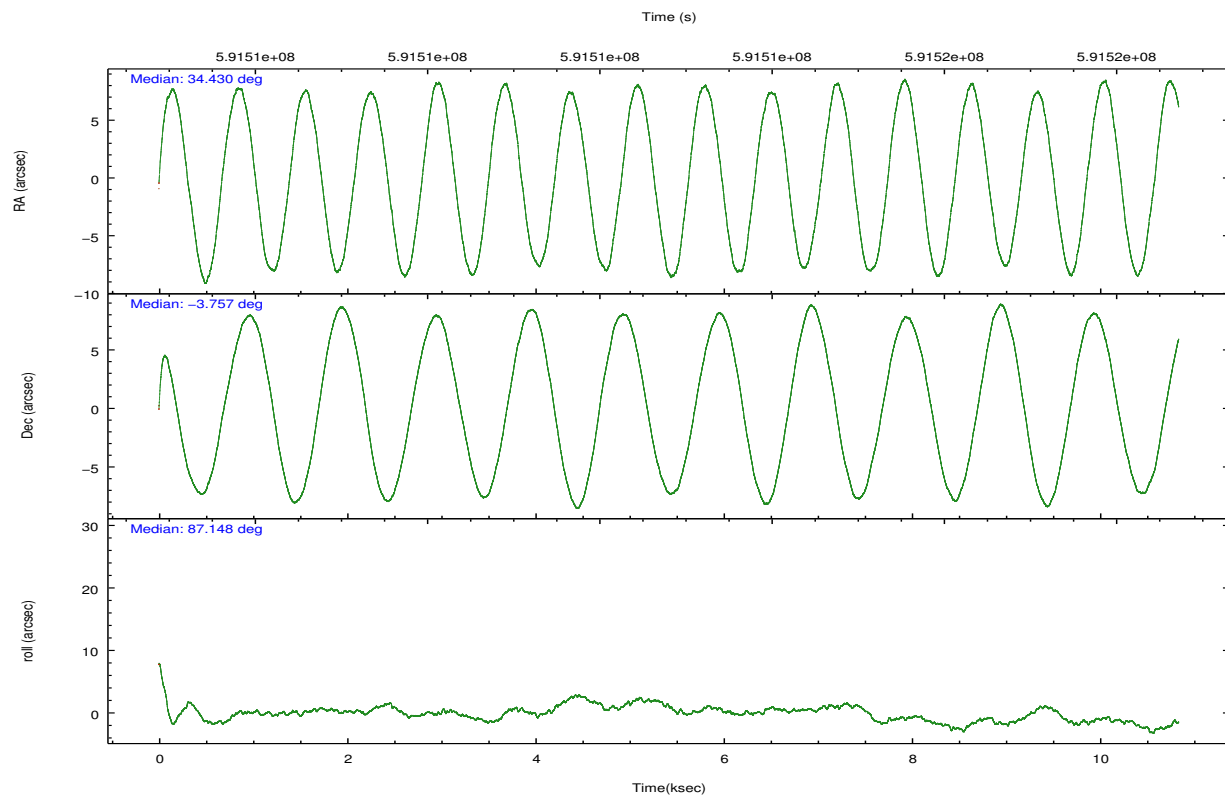
	ccd 2	ccd 3	ccd 5	ccd 6	ccd 7
grade 0 events	2609	2579	11481	2697	3307
	3%	3%	9%	3%	3%
grade 1 events	37	35	212	32	109
	0%	0%	0%	0%	0%
grade 2 events	1818	1598	17684	1852	8432
	2%	2%	14%	2%	9%
grade 3 events	719	759	1658	856	3196
	1%	1%	1%	1%	3%
grade 4 events	807	747	1572	794	3159
	1%	1%	1%	1%	3%
grade 5 events	2792	3407	7954	3510	9156
	4%	5%	6%	5%	10%
grade 6 events	1592	1587	29514	1843	21586
	2%	2%	24%	2%	23%
grade 7 events	57761	56925	52191	57905	41659
	84%	84%	42%	83%	45%

## 2.2 Compared Parameters

Parameter	Planned	Actual	Parameter	Planned	Actual
Instrument	ACIS	ACIS	Obspar format version number	7	7
Detector	ACIS-23567	ACIS-23567	Obspar file type	PREDICTED	ACTUAL
Grating	NONE	NONE	Obspar update status	NONE	UPDATED
Data mode	FAINT	FAINT	Number of optional ACIS chips dropped	0	0
Observation mode	POINTING	POINTING	On-chip summing requested	N	N
[deg] Pointing RA	34.442346	34.42949282574733	Subarray requested	NONE	NONE
[deg] Pointing Dec	-3.781065	-3.756847240196116	Alternating exposures requested	N	N
[deg] Pointing Roll	87.000619	87.15641502805134	[s] Primary exposure time	0.000000	3.1
[mm] SIM focus pos	-0.684267	-0.6828225247311905			
[mm] SIM defocus	0	0.001444936568705701			
[mm] SIM translation stage pos	-190.132523	-190.1425803651734			
[mm] SIM translation stage offset	0	0.01005778216563158			
[s] Observation start time (MET)	591507519.184000	591506043.53276			
Observation start date	2016-09-29T03:37:31	2016-09-29T03:14:03			
[s] Observation end time (MET)	591518221.184000	591518445.52098			
Observation end date	2016-09-29T06:35:53	2016-09-29T06:40:45			
Read mode	TIMED	TIMED			

## 2.3 Aspect



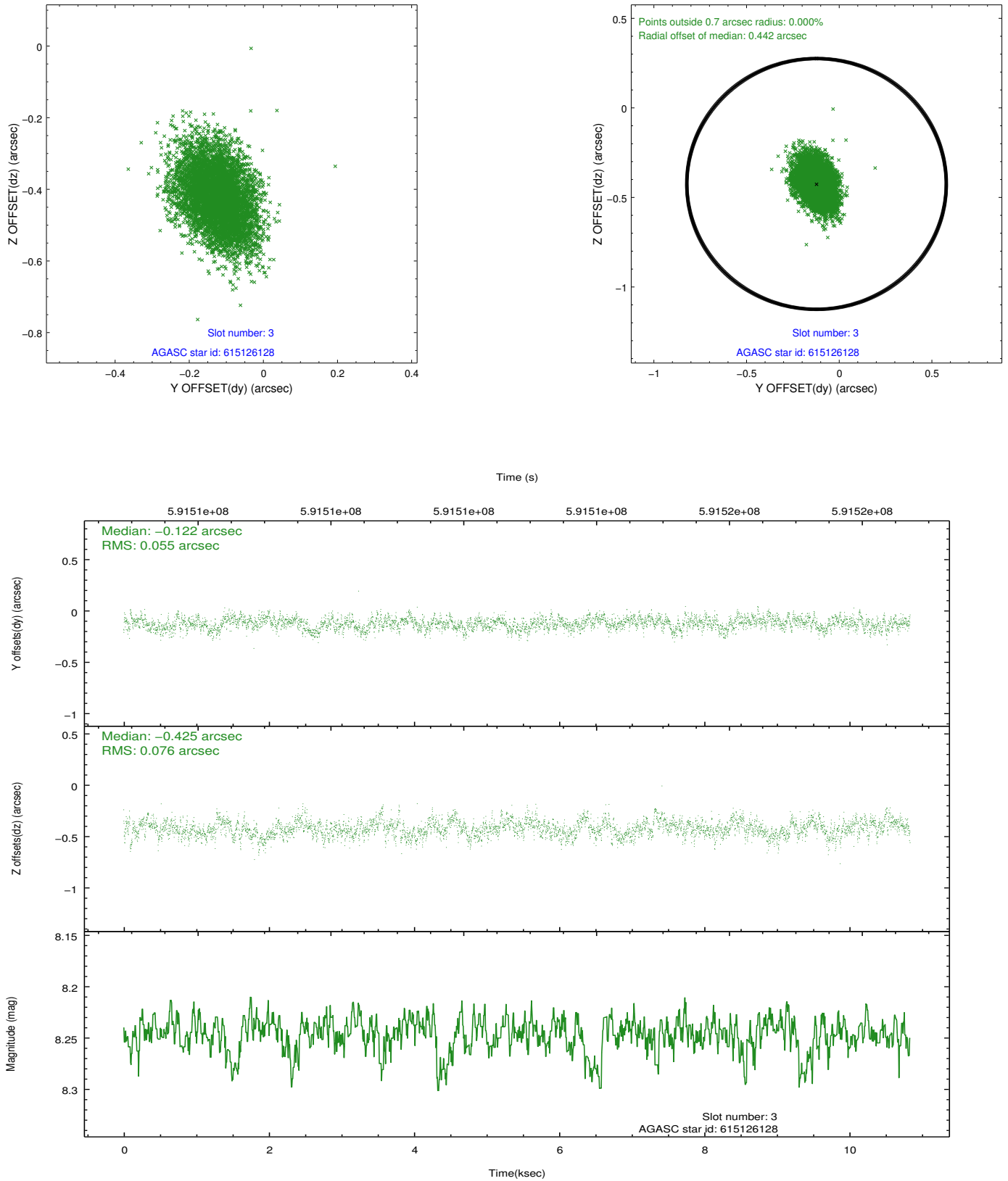


### Slot Statistics

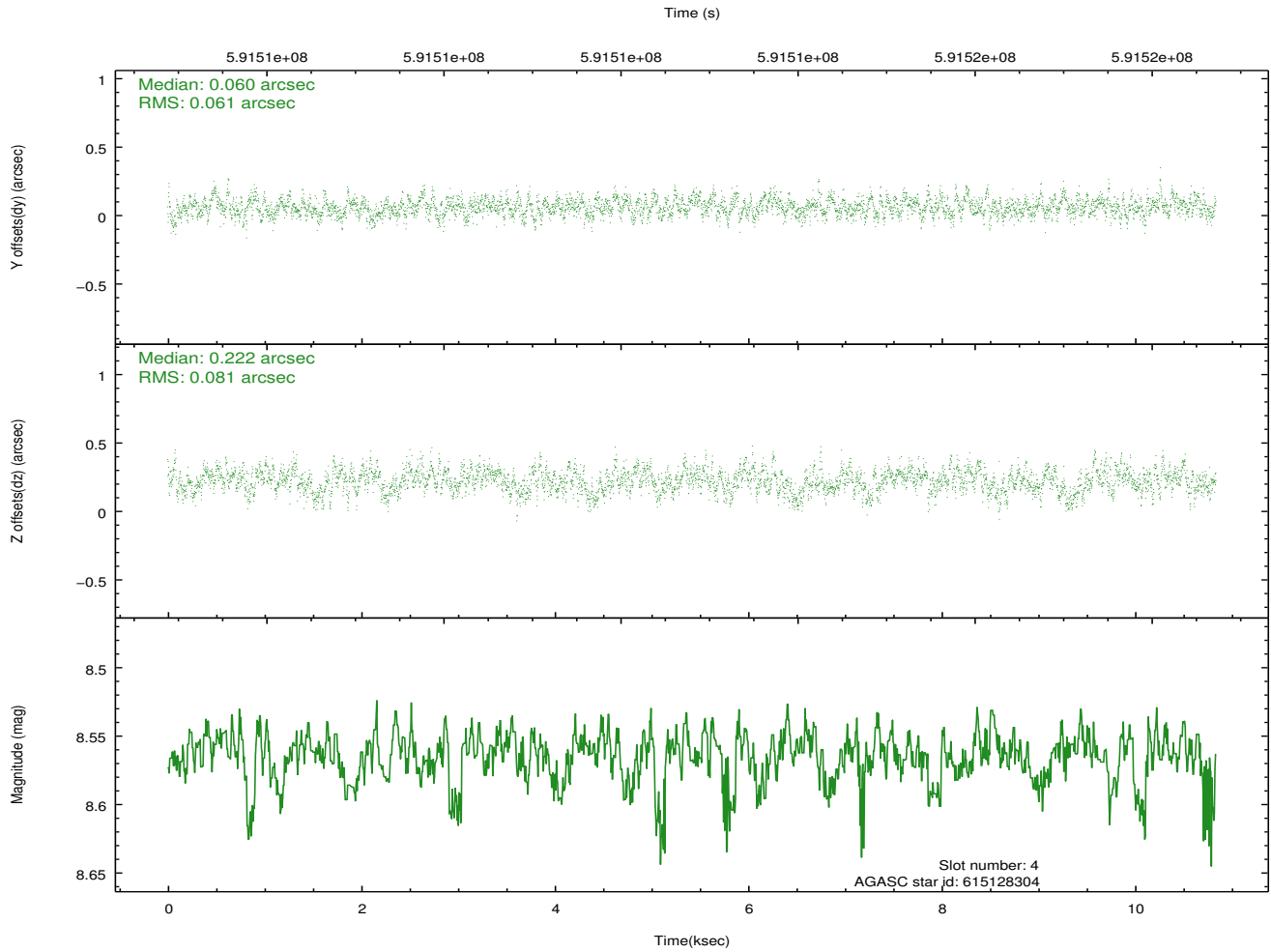
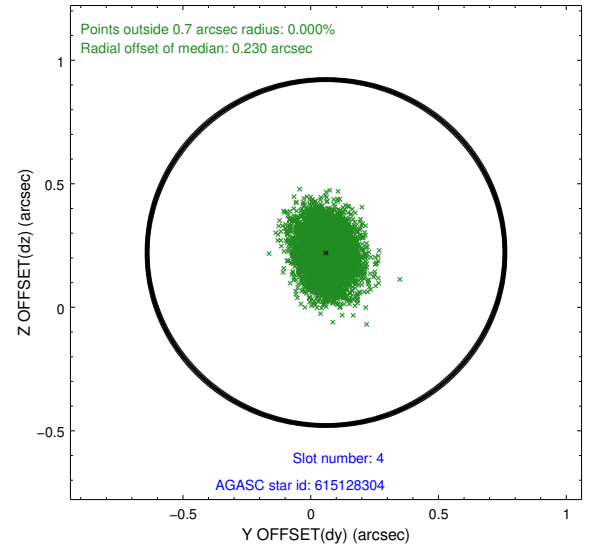
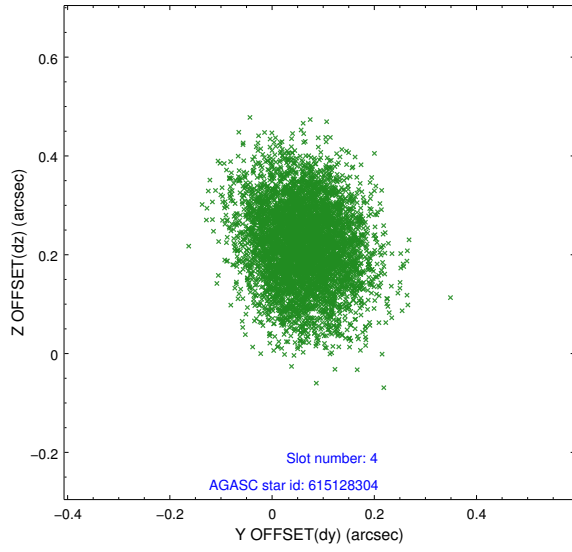
slot	status	used	id	mag	n_pts	med_dy	med_dz	dr1	dr2	ra	dec	mean_y	mean_z
0	FID		ACIS-S-2	7.03	2644	-0.222	-0.162	0.010	0.015	0.000000	0.000000	-776.57	-1743.54
1	FID		ACIS-S-4	7.14	2644	0.547	0.150	0.011	0.020	0.000000	0.000000	2137.23	164.79
2	FID		ACIS-S-5	7.15	2643	-0.355	0.021	0.009	0.014	0.000000	0.000000	-1828.95	158.83
3	GUIDE	used	615126128	8.25	5282	-0.122	-0.425	0.099	0.164	34.026050	-3.868420	-392.86	1476.44
4	GUIDE	used	615128304	8.56	5287	0.060	0.222	0.109	0.178	34.566287	-4.097564	-1113.67	-504.93
5	GUIDE	used	615129592	8.85	5283	0.145	0.424	0.115	0.188	34.607456	-4.334536	-1959.05	-696.17
6	GUIDE	used	615130056	6.93	5287	0.060	0.033	0.117	0.180	34.919909	-4.345572	-1940.06	-1818.46
7	GUIDE	used	615129992	8.40	5282	-0.151	-0.246	0.111	0.198	33.989595	-4.095121	-1215.65	1560.96

## 2.4 Star Slots

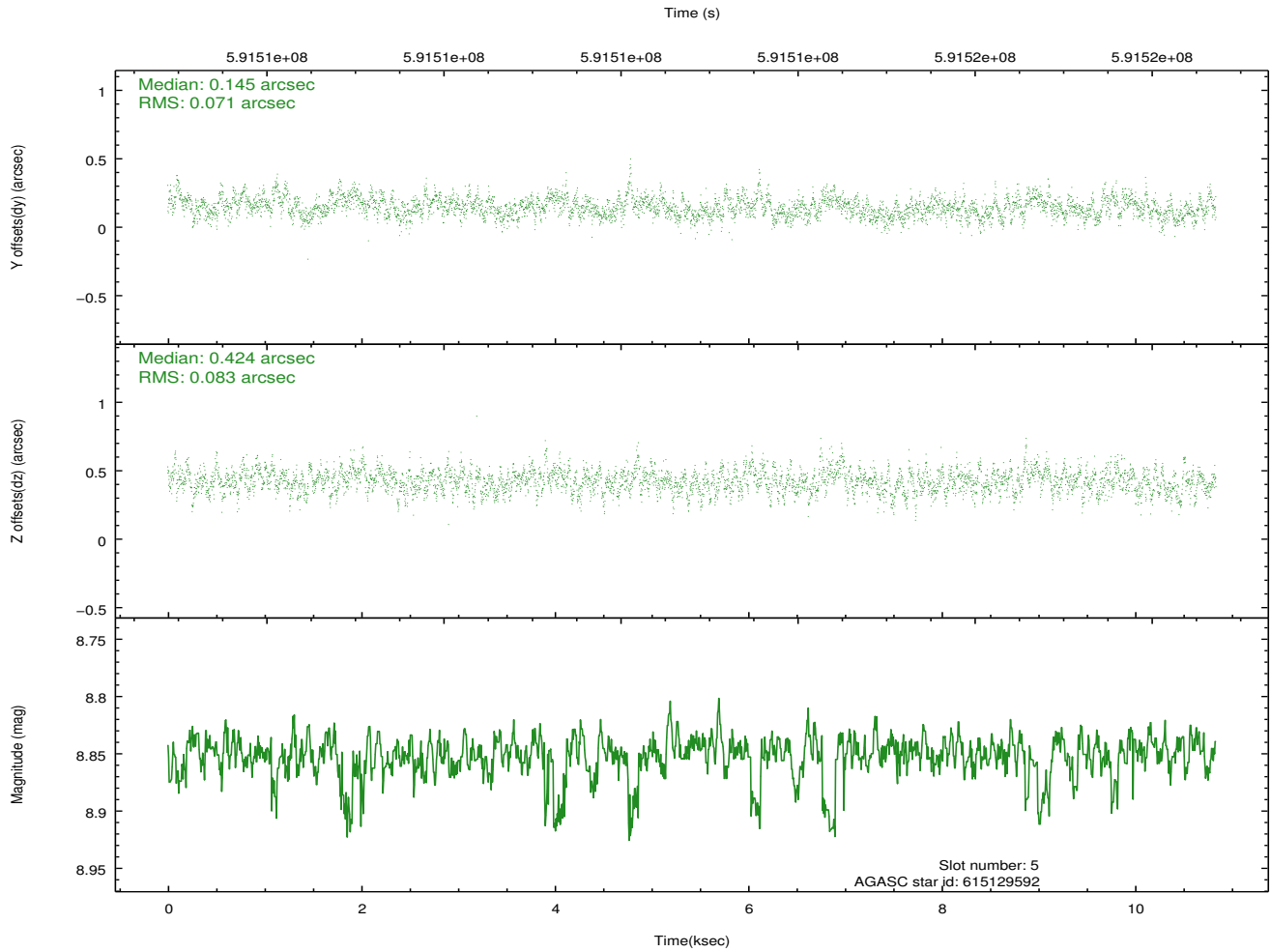
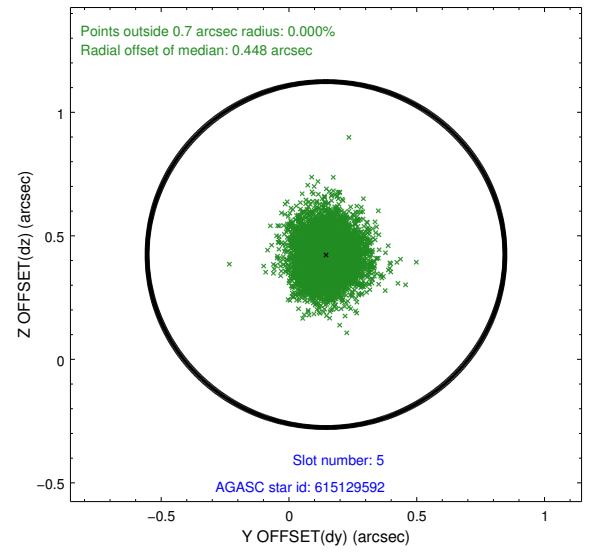
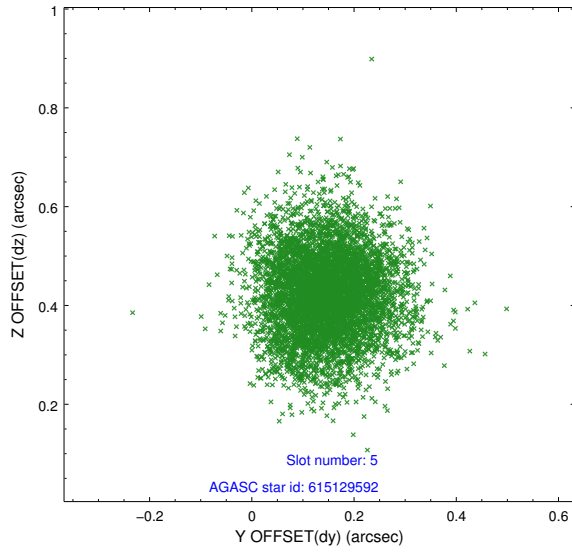
### 2.4.1 Slot 3



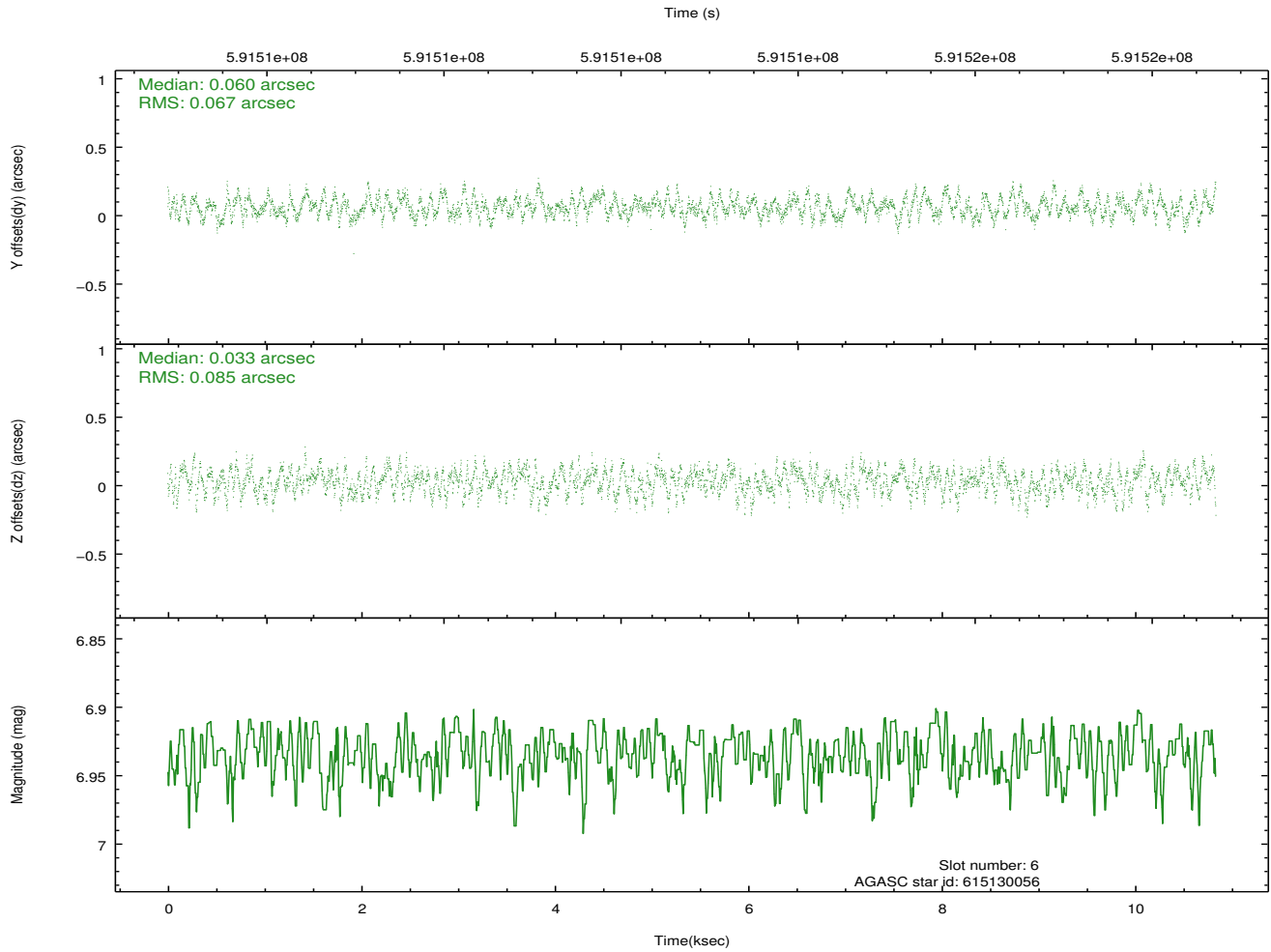
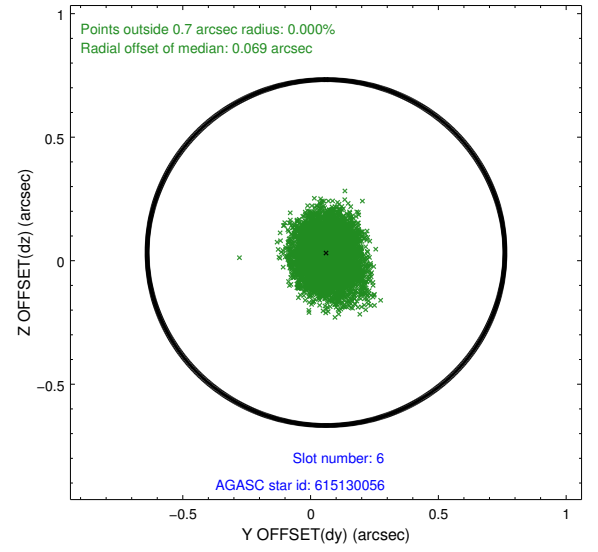
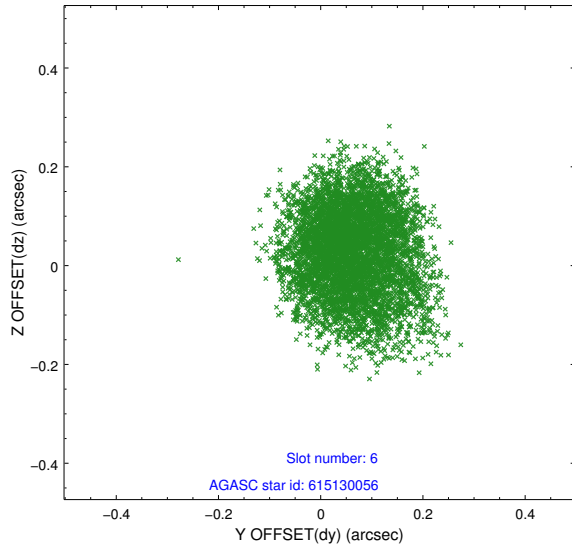
## 2.4.2 Slot 4



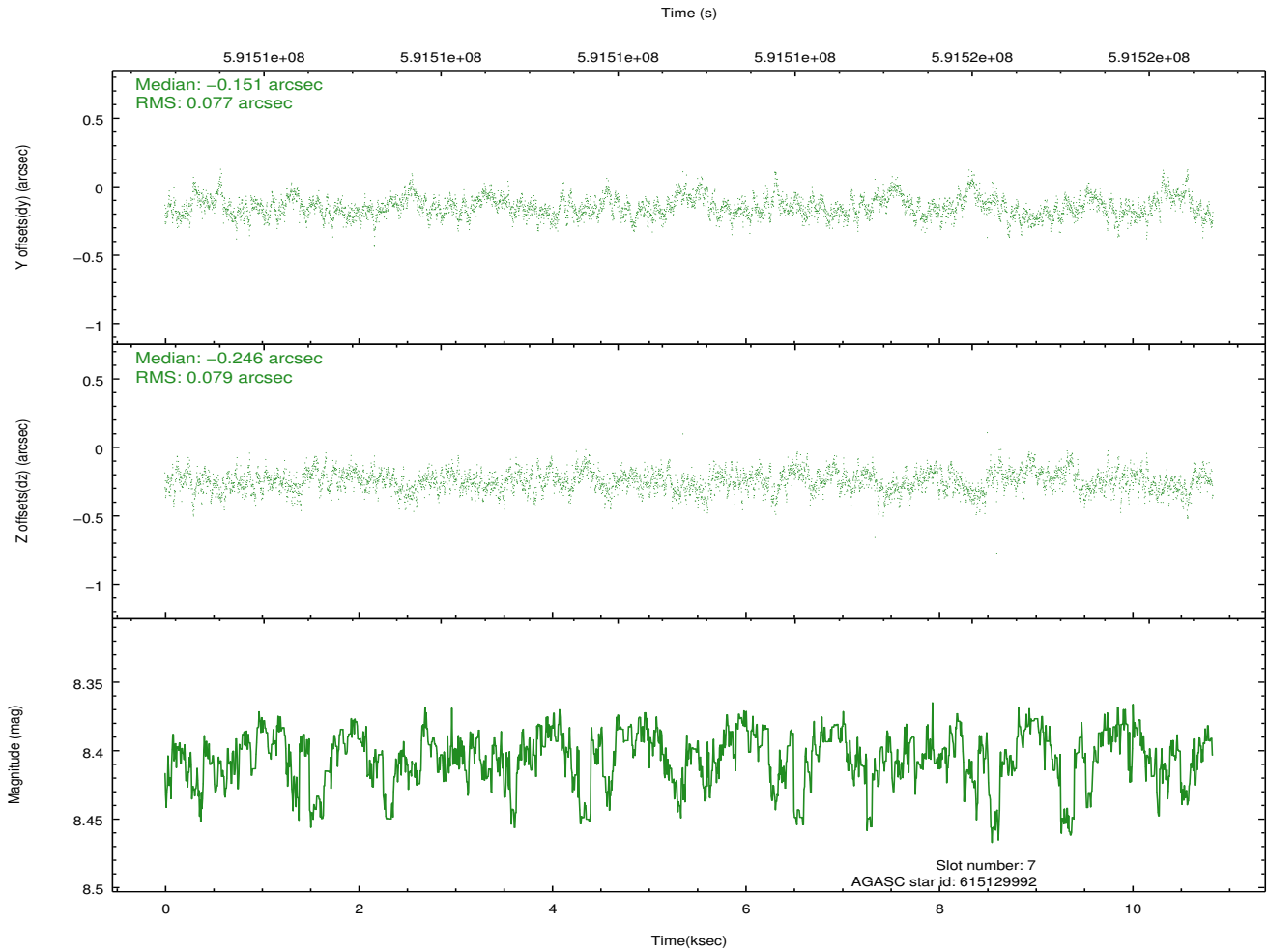
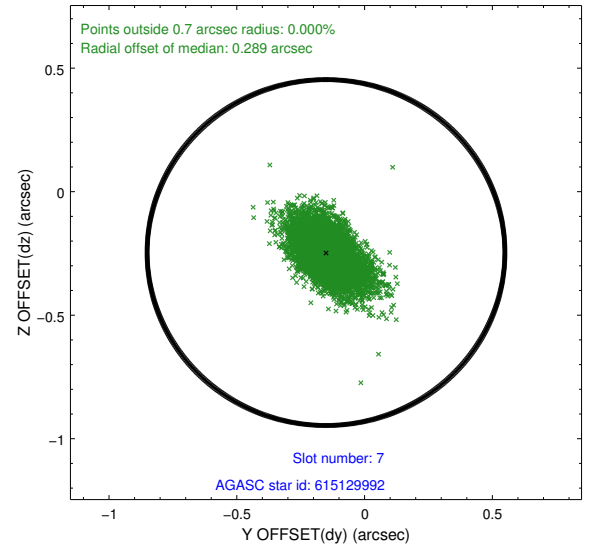
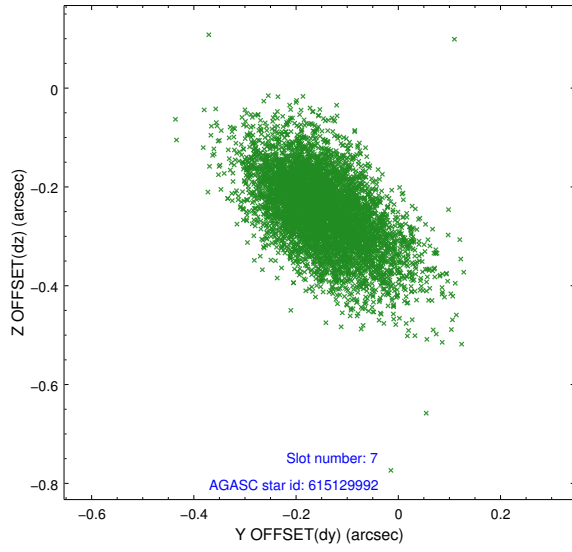
### 2.4.3 Slot 5



## 2.4.4 Slot 6

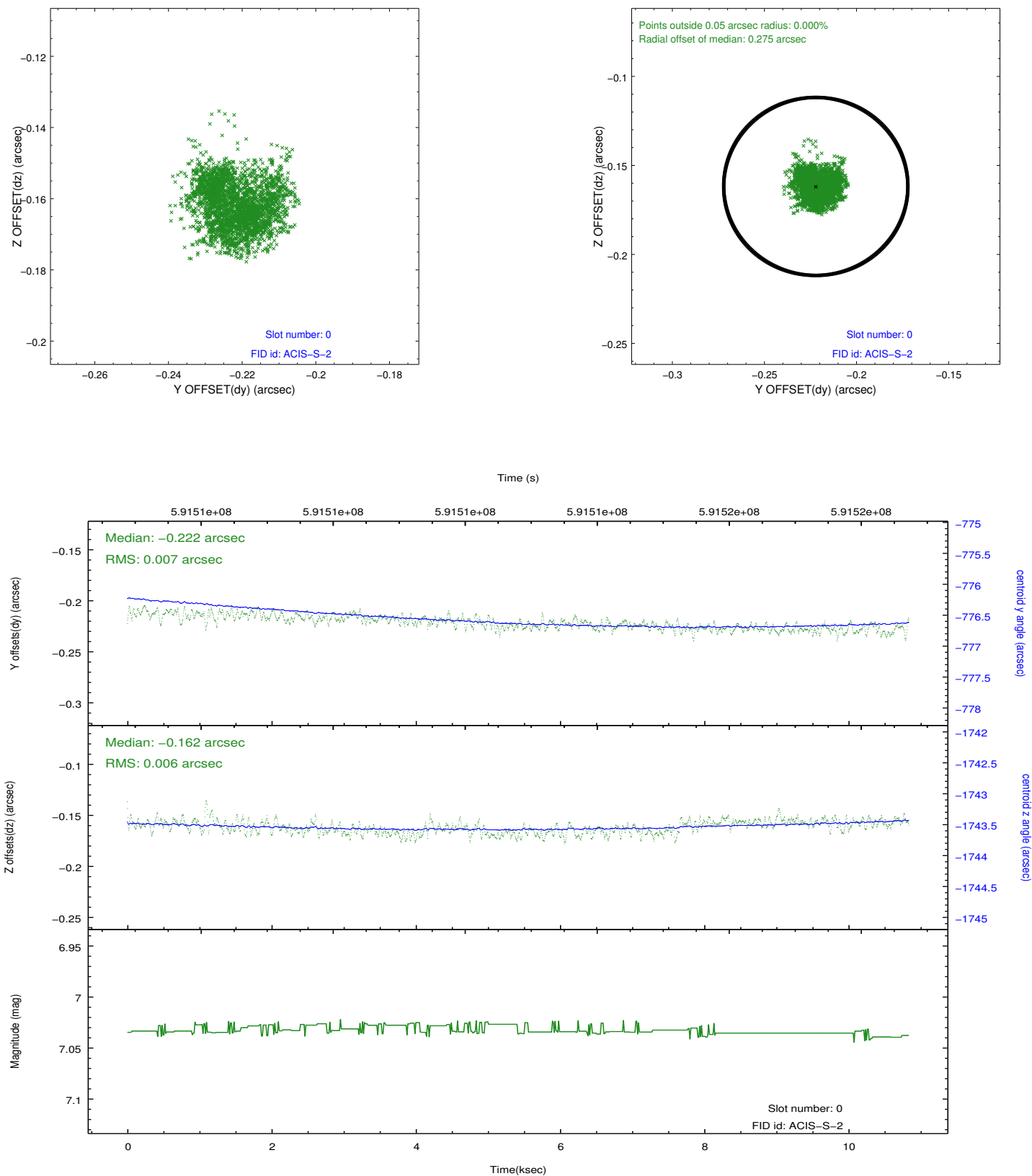


## 2.4.5 Slot 7

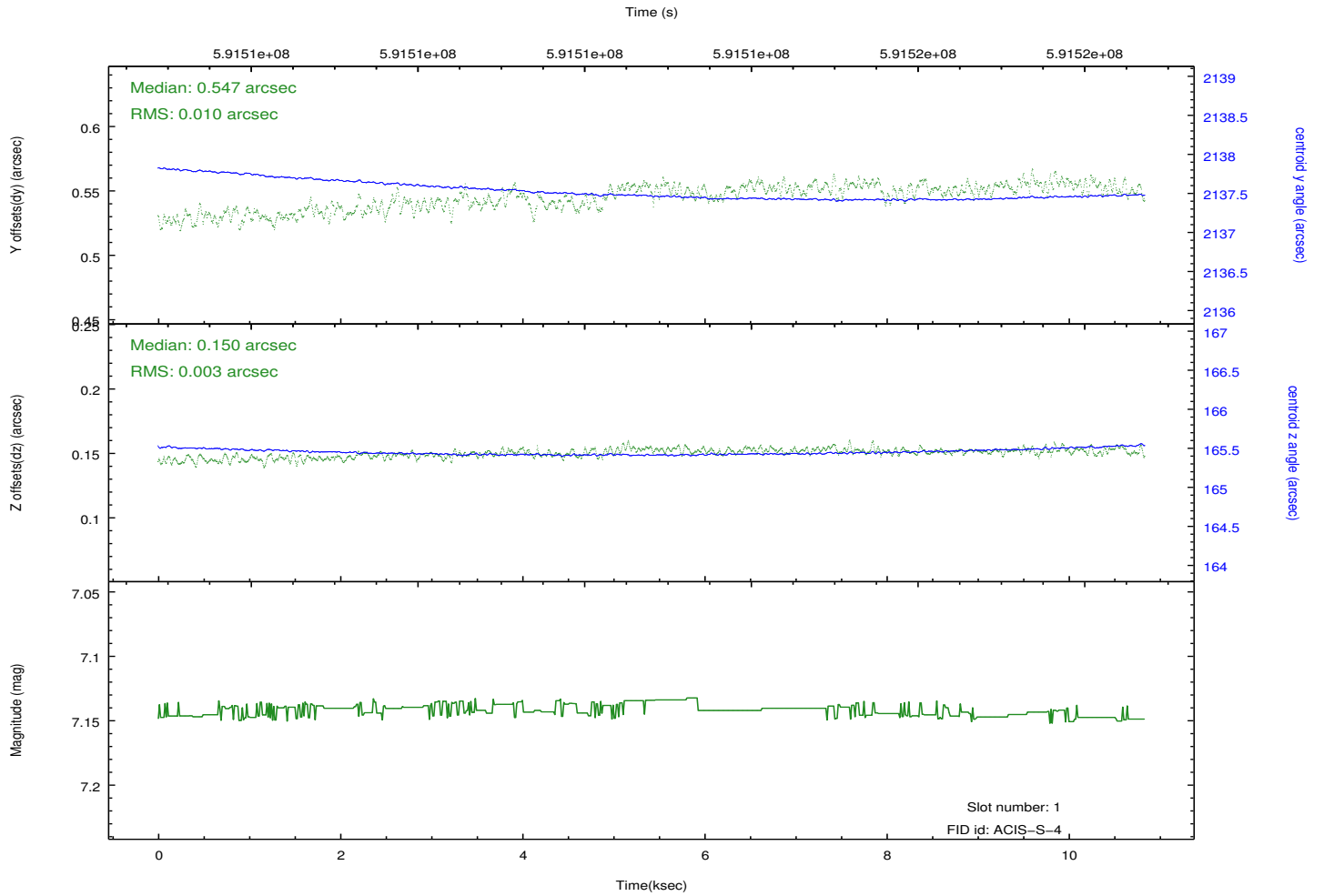
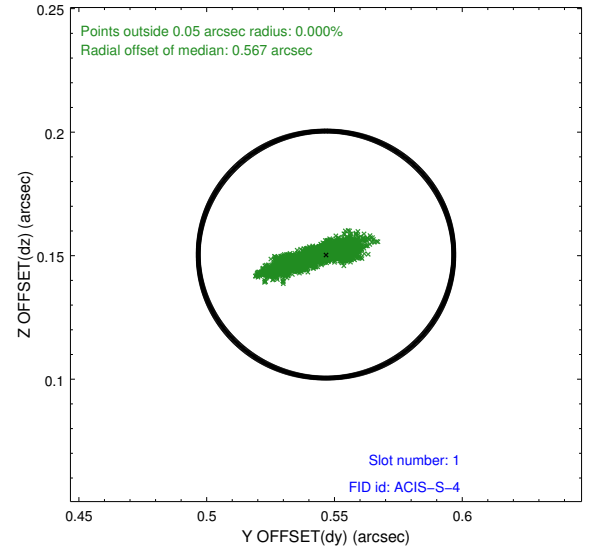
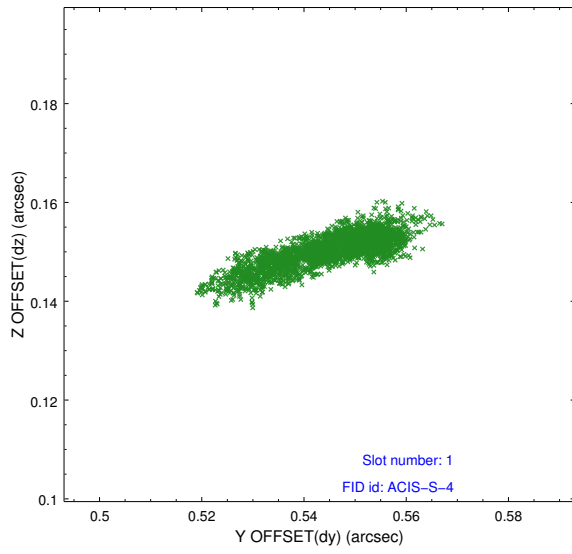


## 2.5 FID Slots

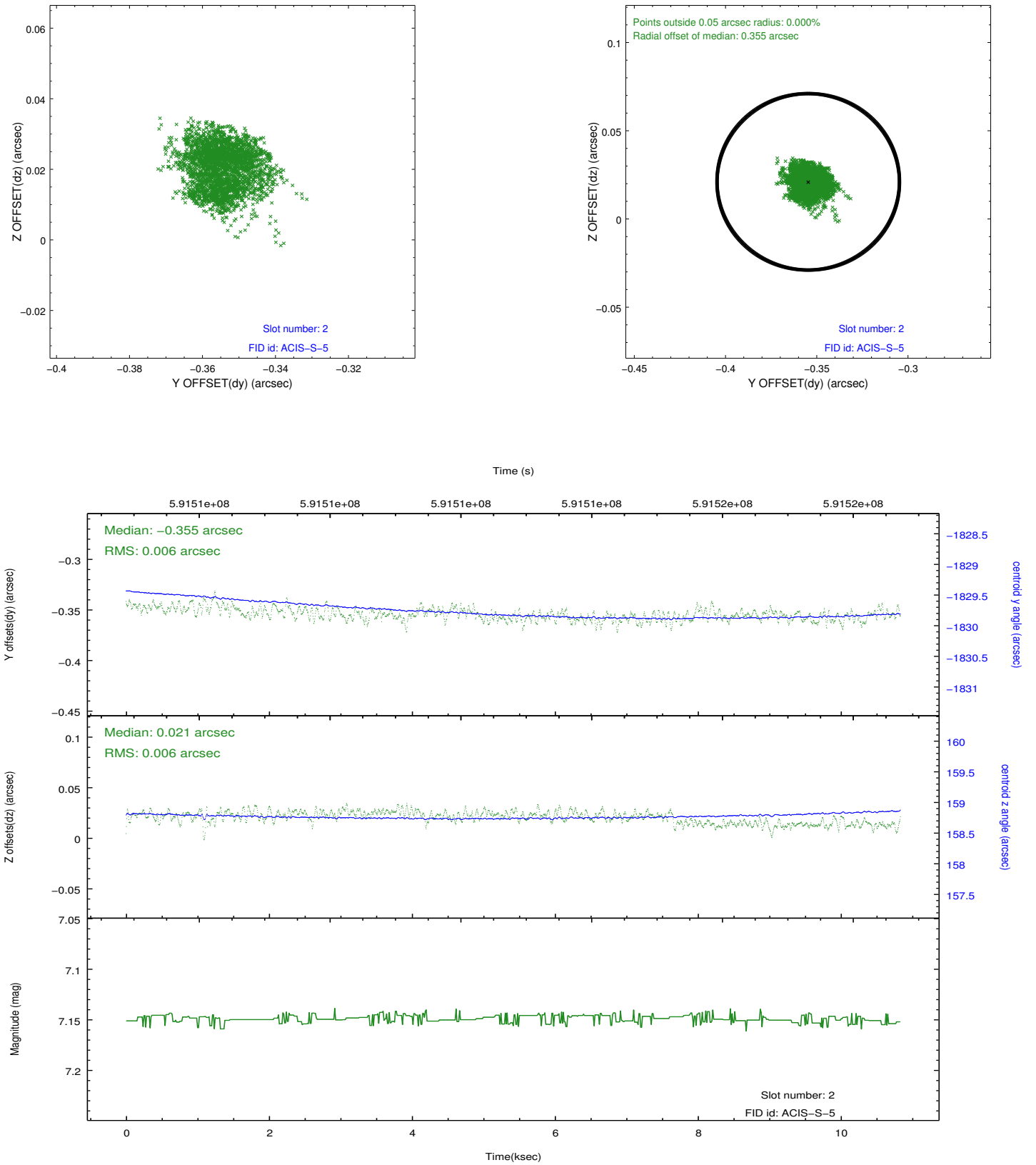
### 2.5.1 Slot 0



## 2.5.2 Slot 1



### 2.5.3 Slot 2



## A Summary

### A.1 Status

V&V Scientist	Joy Nichols
V&V Date (YYYY-MM-DD)	2016.09.30
V&V Edition	1
V&V Disposition and Status	OK
V&V Charge Time	10.762101937652

### A.2 Comments