

V&V Reference Report

L2 ASCDS Version : 10.5.1.1

Observation 18254 - L2 Version 1
Chandra X-Ray Center

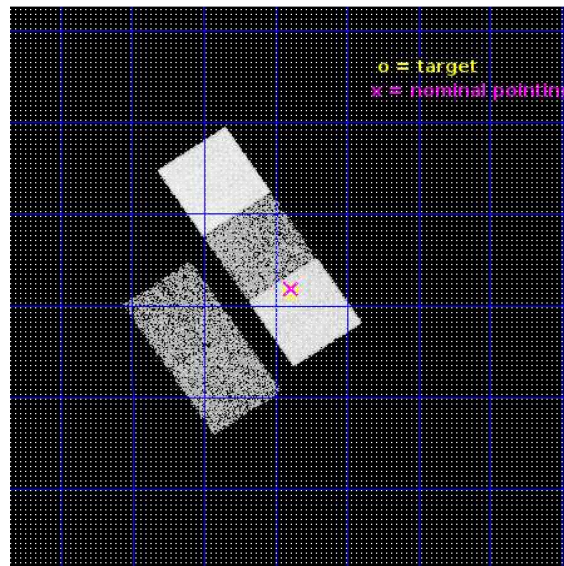
L2 Processing Date : Oct 8 2016

Contents

1	Front	2
2	OBI	3
2.1	OBI	3
2.1.1	Images	3
2.1.2	Bias	3
2.1.3	Parameters	4
2.1.4	Events	4
2.2	Compared Parameters	5
2.3	Aspect	6
2.4	Star Slots	9
2.4.1	Slot 3	9
2.4.2	Slot 4	10
2.4.3	Slot 5	11
2.4.4	Slot 6	12
2.4.5	Slot 7	13
2.5	FID Slots	14
2.5.1	Slot 0	14
2.5.2	Slot 1	15
2.5.3	Slot 2	16
A	Summary	17
A.1	Status	17
A.2	Comments	17

1 Front

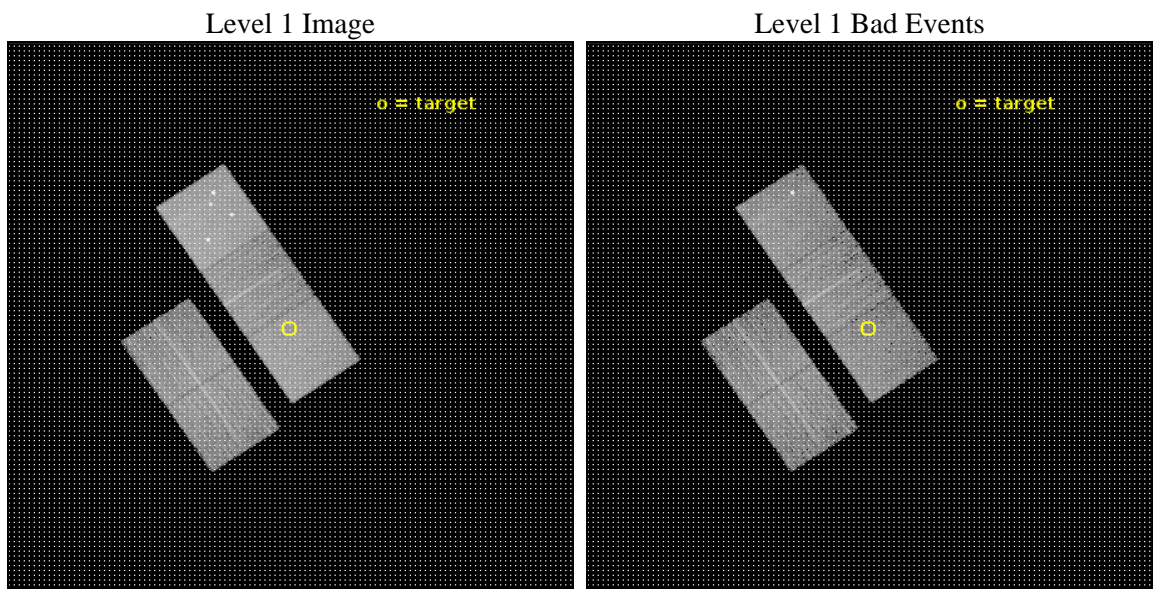
seq_num	801578	Sequence number
obs_id	18254	Observation id
title	Building a complete sample of $z>1$ XXL galaxy clusters	Proposal tit
observer	Dr Ben Maughan	Principal investigator
object	XLSS J022253.6-032828	Source name
dtcycle	0	
cycle	P	events from which exps? Prim/Second/Both
ra_targ	35.722917	Observer's specified target RA [deg]
dec_targ	-3.475	Observer's specified target Dec [deg]
ra_nom	35.721726190189	Nominal RA [deg]
dec_nom	-3.4693186604024	Nominal Dec [deg]
roll_nom	56.156483346968	Nominal Roll [deg]
revision	1	Processing version of data
ontime	9774.3000752926	Sum of GTIs [s]
livetime	9646.5916490739	Livetime [s]
ontime2	9774.3000752926	Sum of GTIs [s]
ontime3	9774.3000752926	Sum of GTIs [s]
ontime5	9774.3000752926	Sum of GTIs [s]
ontime6	9774.3000752926	Sum of GTIs [s]
ontime7	9774.3000752926	Sum of GTIs [s]
l2events	102496	Number of level 2 events



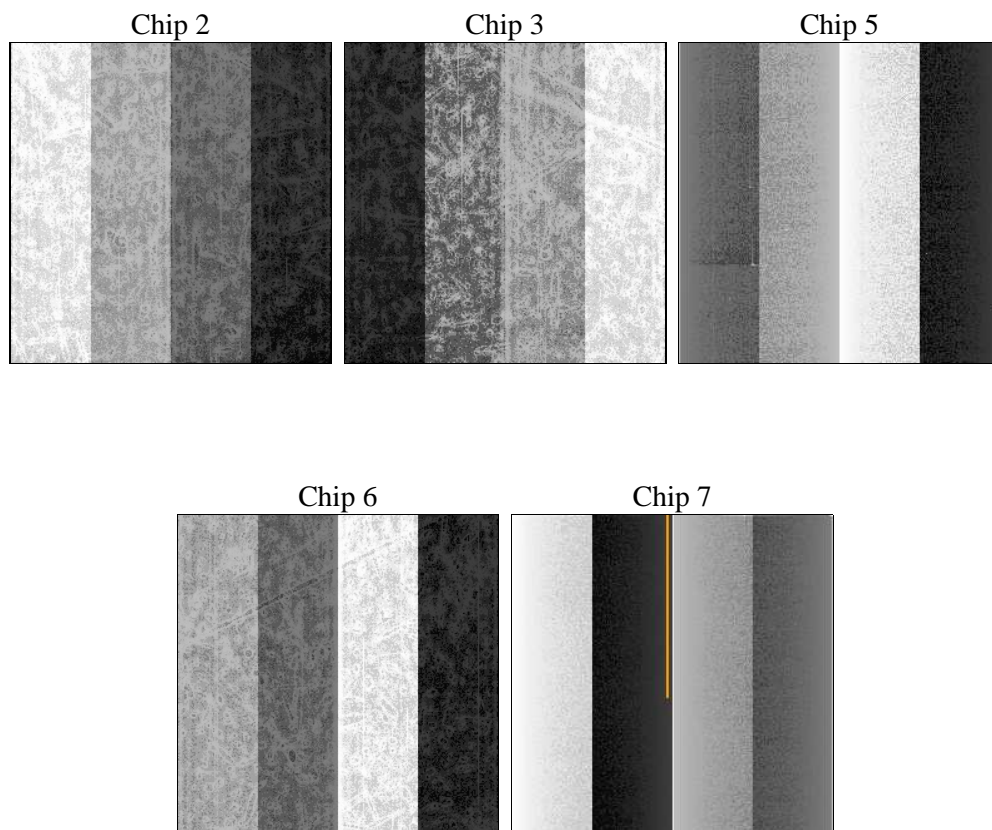
2 OBI

2.1 OBI

2.1.1 Images



2.1.2 Bias



2.1.3 Parameters

obi_num	0	Obi number	sched_exp_time	10000.000000	[s] Scheduled observation exposure time
ascdsver	10.5.1.1	Processing system revision	ontime	9774.3000752926	Sum of GTIs [s]
caldbver	4.7.2	 	ontime2	9774.3000752926	Sum of GTIs [s]
date	2016-10-09T01:34:57	Date and time of file creation	ontime3	9774.3000752926	Sum of GTIs [s]
revision	1	Processing version of data	ontime5	9774.3000752926	Sum of GTIs [s]
			ontime6	9774.3000752926	Sum of GTIs [s]
			ontime7	9774.3000752926	Sum of GTIs [s]
			l1events	395395	Number of level 1 events

2.1.4 Events

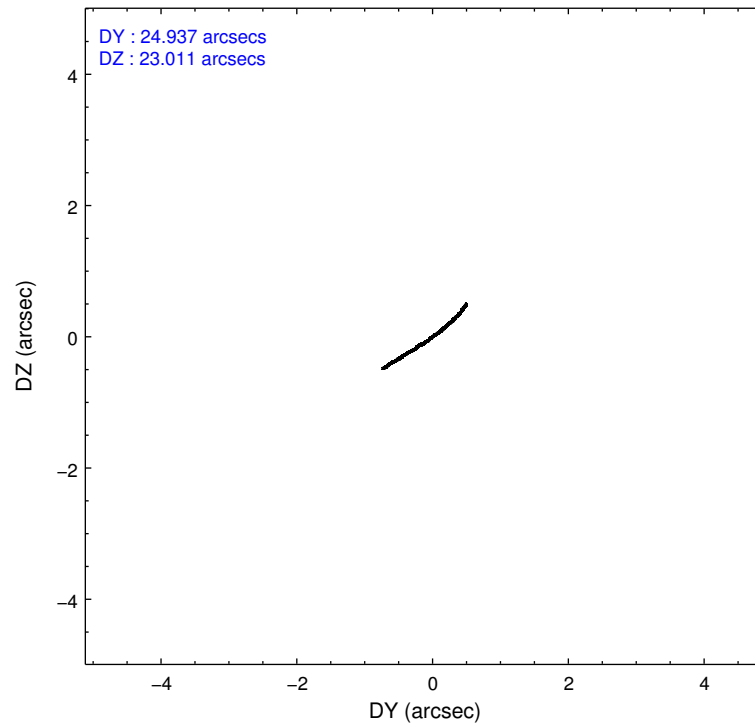
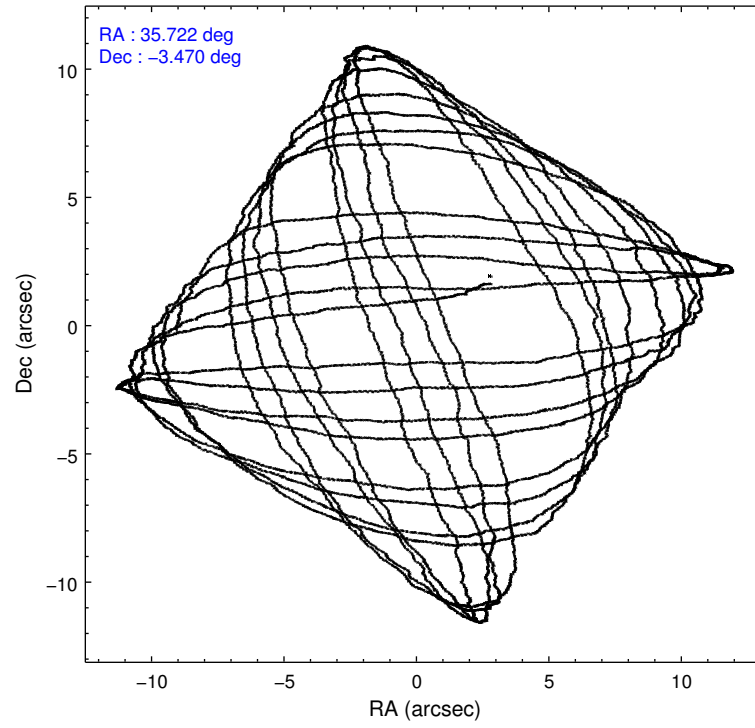
	ccd 2	ccd 3	ccd 5	ccd 6	ccd 7
level 1 events	64015	63930	115980	66110	85360
rejected events	57106	57255	58942	58511	48350
rejected %	89%	89%	50%	88%	56%

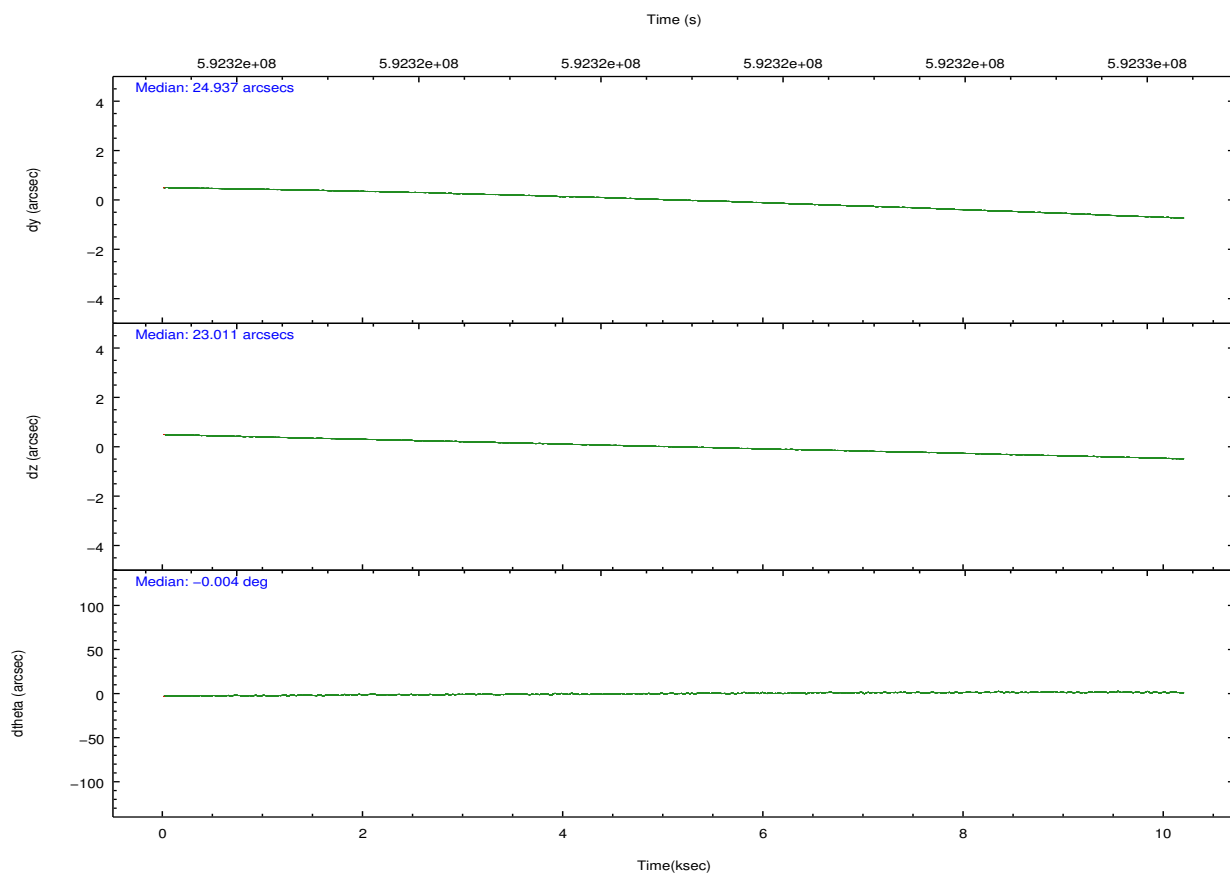
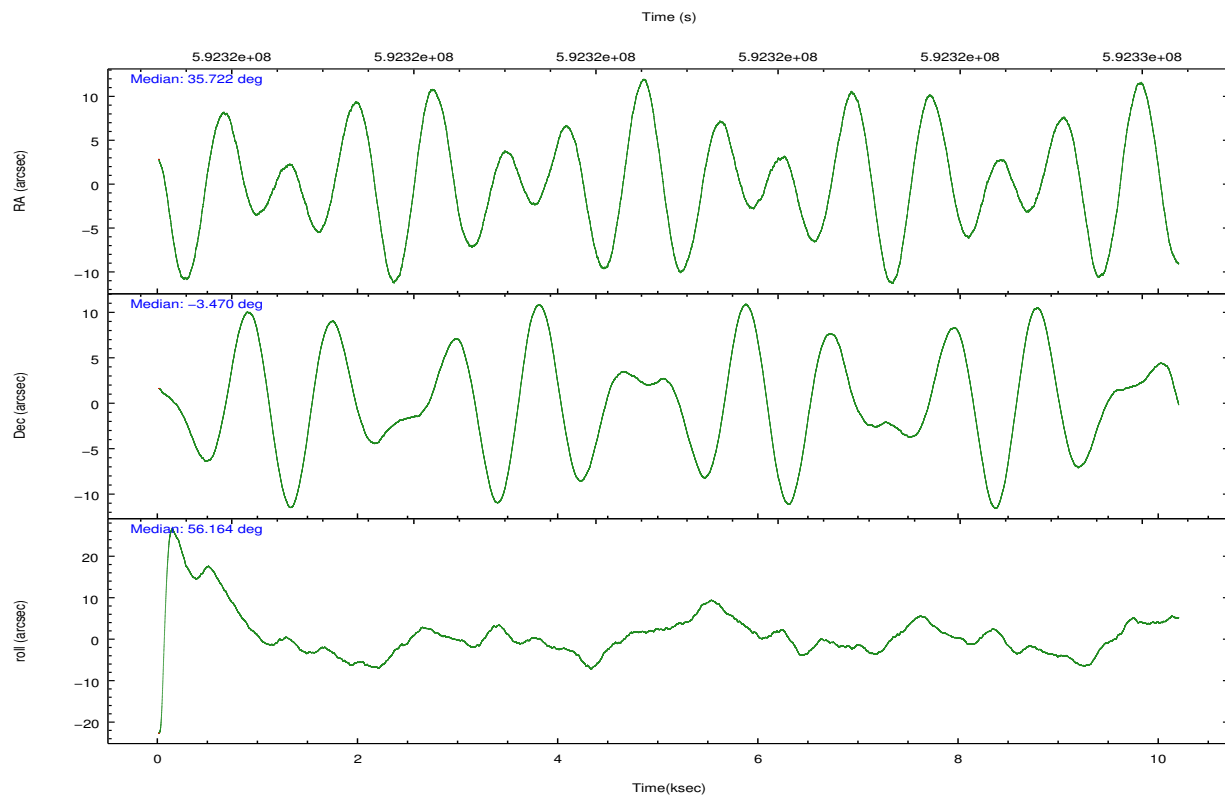
	ccd 2	ccd 3	ccd 5	ccd 6	ccd 7
grade 0 events	2369	2230	9741	2490	3084
	3%	3%	8%	3%	3%
grade 1 events	37	40	229	18	96
	0%	0%	0%	0%	0%
grade 2 events	1746	1471	16328	1896	7928
	2%	2%	14%	2%	9%
grade 3 events	742	731	1669	747	2850
	1%	1%	1%	1%	3%
grade 4 events	695	754	1520	720	2916
	1%	1%	1%	1%	3%
grade 5 events	2624	3242	7718	3281	8644
	4%	5%	6%	4%	10%
grade 6 events	1360	1494	27800	1746	20248
	2%	2%	23%	2%	23%
grade 7 events	54442	53968	50975	55212	39594
	85%	84%	43%	83%	46%

2.2 Compared Parameters

Parameter	Planned	Actual	Parameter	Planned	Actual
Instrument	ACIS	ACIS	Obspar format version number	7	7
Detector	ACIS-23567	ACIS-23567	Obspar file type	PREDICTED	ACTUAL
Grating	NONE	NONE	Obspar update status	NONE	UPDATED
Data mode	FAINT	FAINT	Number of optional ACIS chips dropped	0	0
Observation mode	POINTING	POINTING	On-chip summing requested	N	N
[deg] Pointing RA	35.720290	35.72172619018887	Subarray requested	NONE	NONE
[deg] Pointing Dec	-3.496743	-3.469318660402448	Alternating exposures requested	N	N
[deg] Pointing Roll	55.999843	56.15648334696793	[s] Primary exposure time	0.000000	3.1
[mm] SIM focus pos	-0.684267	-0.6828225247311905			
[mm] SIM defocus	0	0.001444936568705701			
[mm] SIM translation stage pos	-190.132523	-190.1425803651734			
[mm] SIM translation stage offset	0	0.01005778216563158			
[s] Observation start time (MET)	592315918.184000	592315385.6294			
Observation start date	2016-10-08T12:10:50	2016-10-08T12:03:05			
[s] Observation end time (MET)	592325918.184000	592326802.08005			
Observation end date	2016-10-08T14:57:30	2016-10-08T15:13:22			
Read mode	TIMED	TIMED			

2.3 Aspect



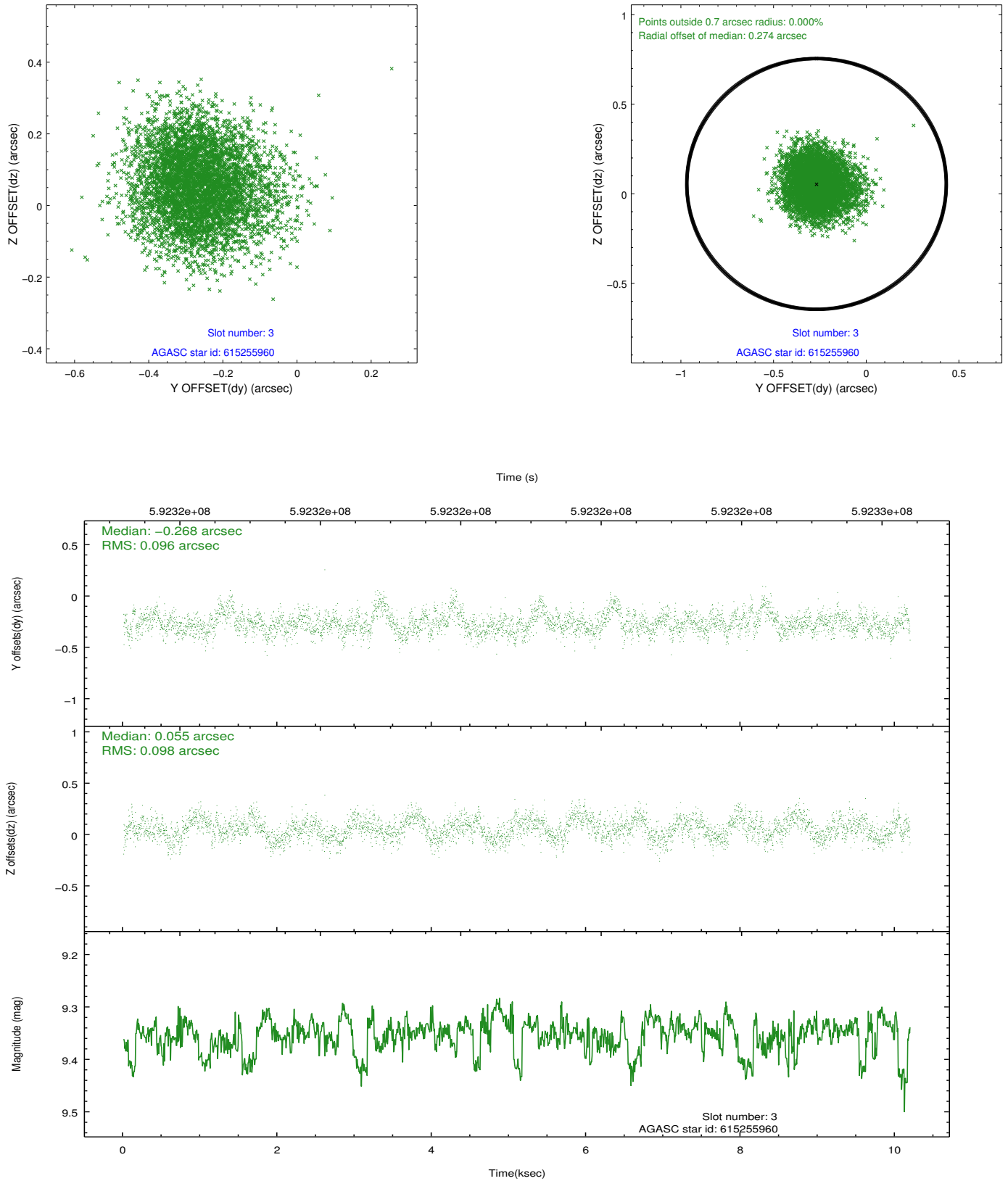


Slot Statistics

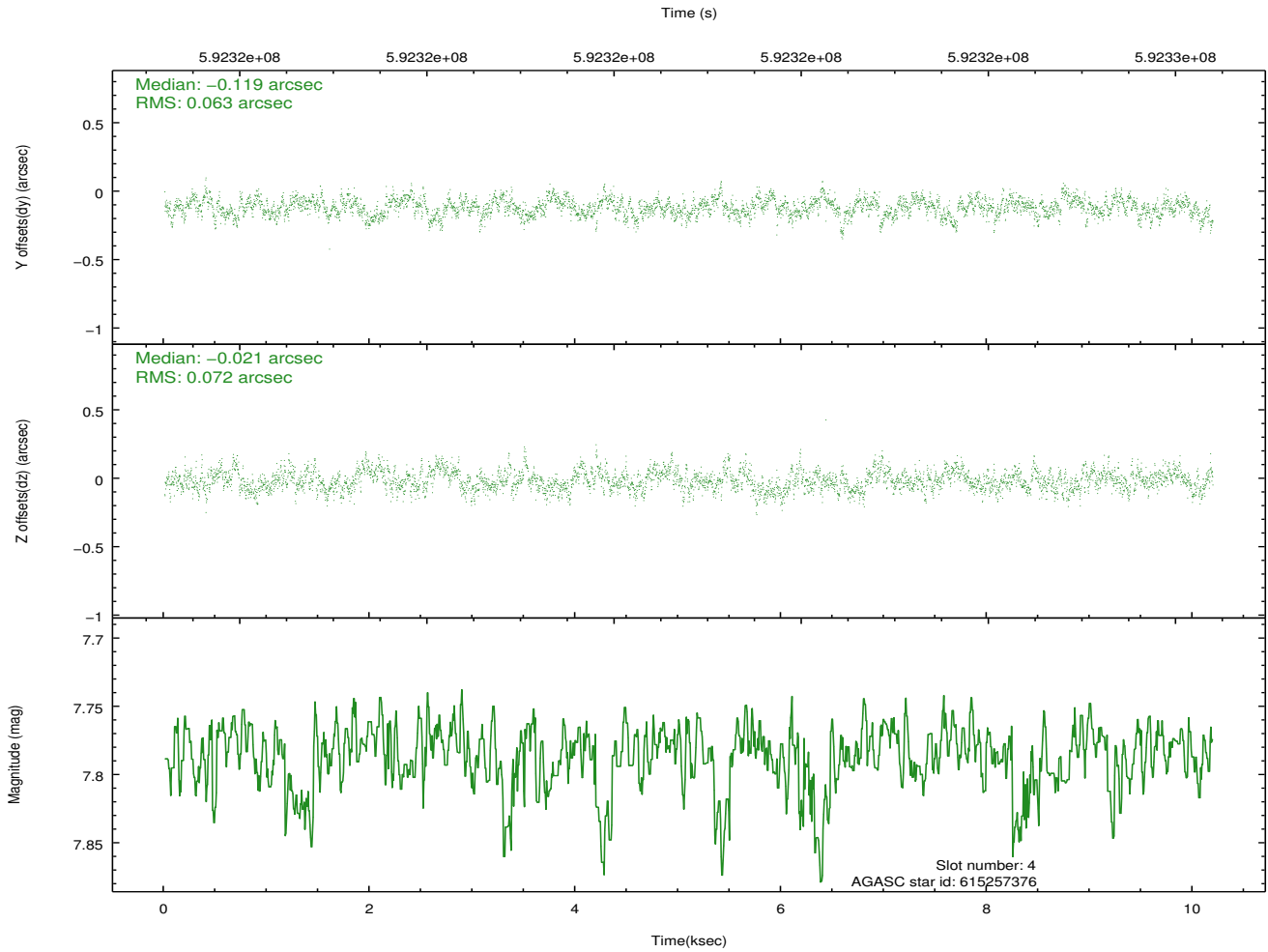
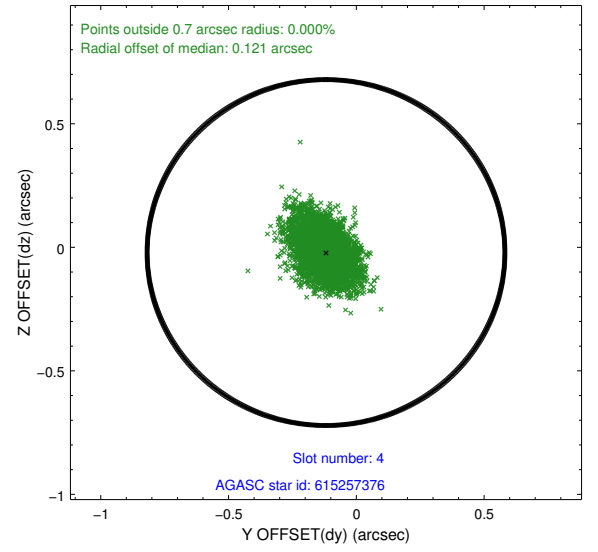
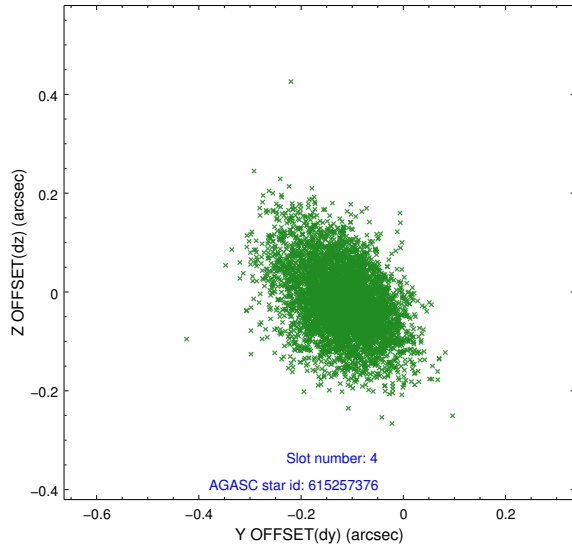
slot	status	used	id	mag	n_pts	med_dy	med_dz	dr1	dr2	ra	dec	mean_y	mean_z
0	FID		ACIS-S-2	7.00	2486	-0.287	-0.144	0.016	0.024	0.000000	0.000000	-778.42	-1744.70
1	FID		ACIS-S-4	7.09	2486	0.588	0.176	0.007	0.012	0.000000	0.000000	2135.48	163.57
2	FID		ACIS-S-5	7.11	2486	-0.333	-0.024	0.016	0.025	0.000000	0.000000	-1830.66	157.61
3	GUIDE	used	615255960	9.35	4967	-0.268	0.055	0.146	0.235	36.111932	-3.008783	2243.22	-185.14
4	GUIDE	used	615257376	7.79	4971	-0.119	-0.021	0.099	0.170	36.304696	-3.217497	2007.93	-1179.67
5	GUIDE	used	615258400	9.07	4959	0.023	-0.090	0.147	0.241	36.055370	-3.237933	1447.19	-477.62
6	GUIDE	used	615260160	9.70	4959	0.502	0.116	0.190	0.301	35.737387	-3.921265	-1232.82	-906.47
7	GUIDE	used	615260392	7.64	4969	-0.138	-0.066	0.110	0.175	35.914136	-3.376682	747.66	-335.92

2.4 Star Slots

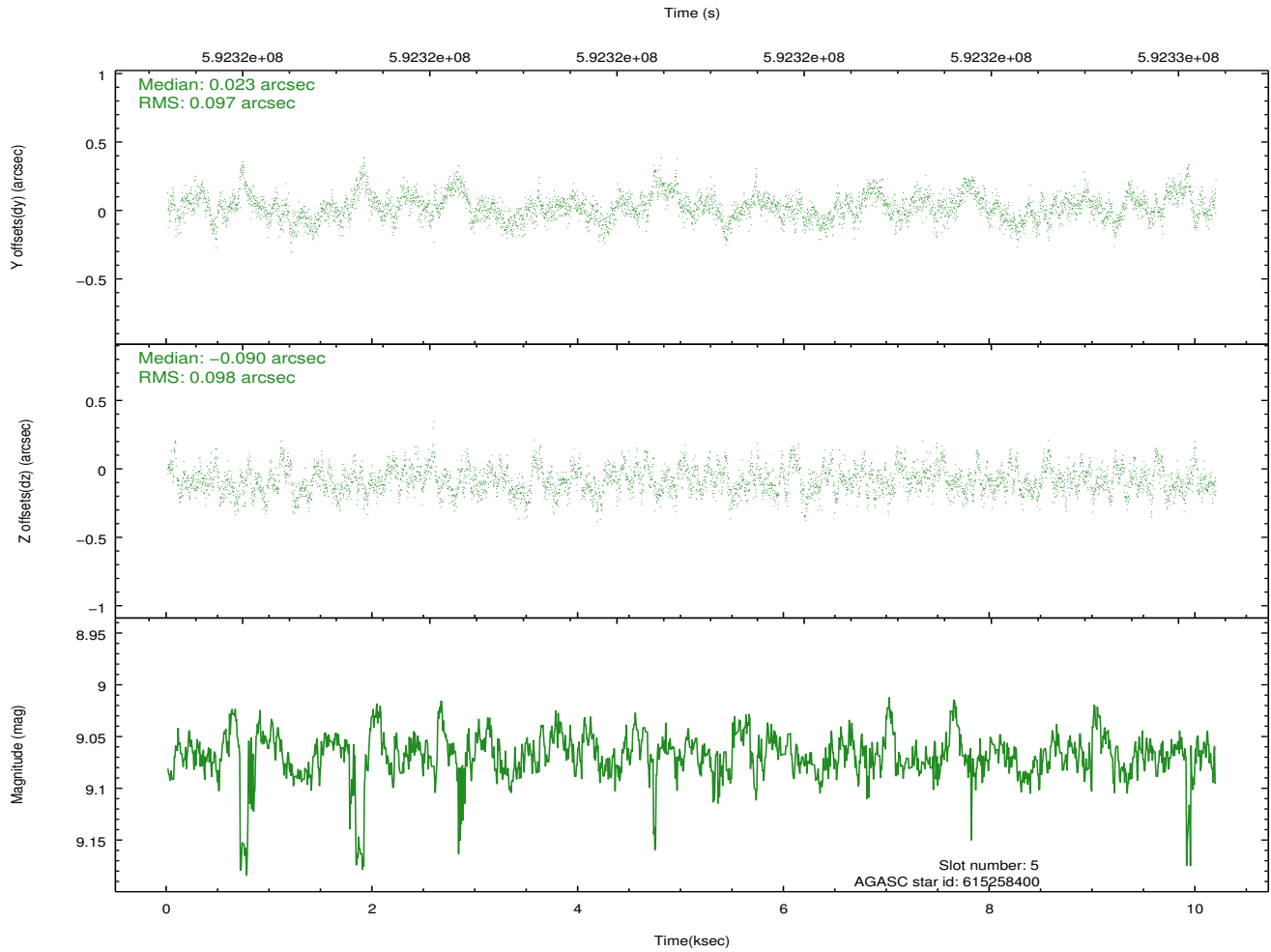
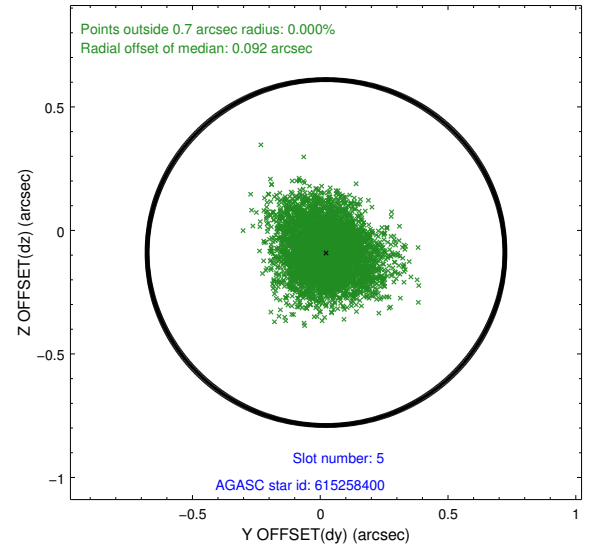
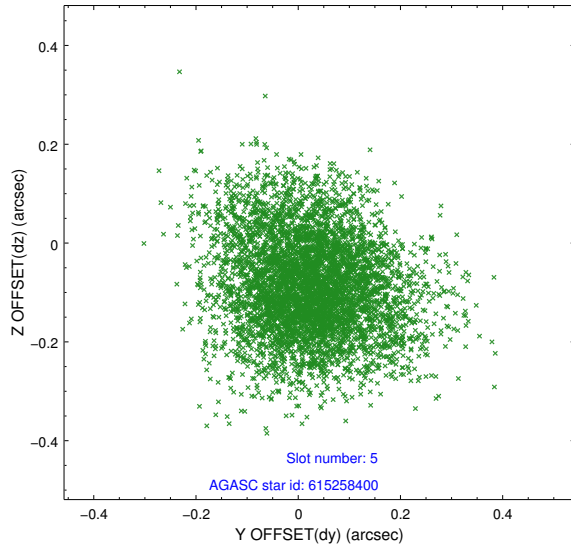
2.4.1 Slot 3



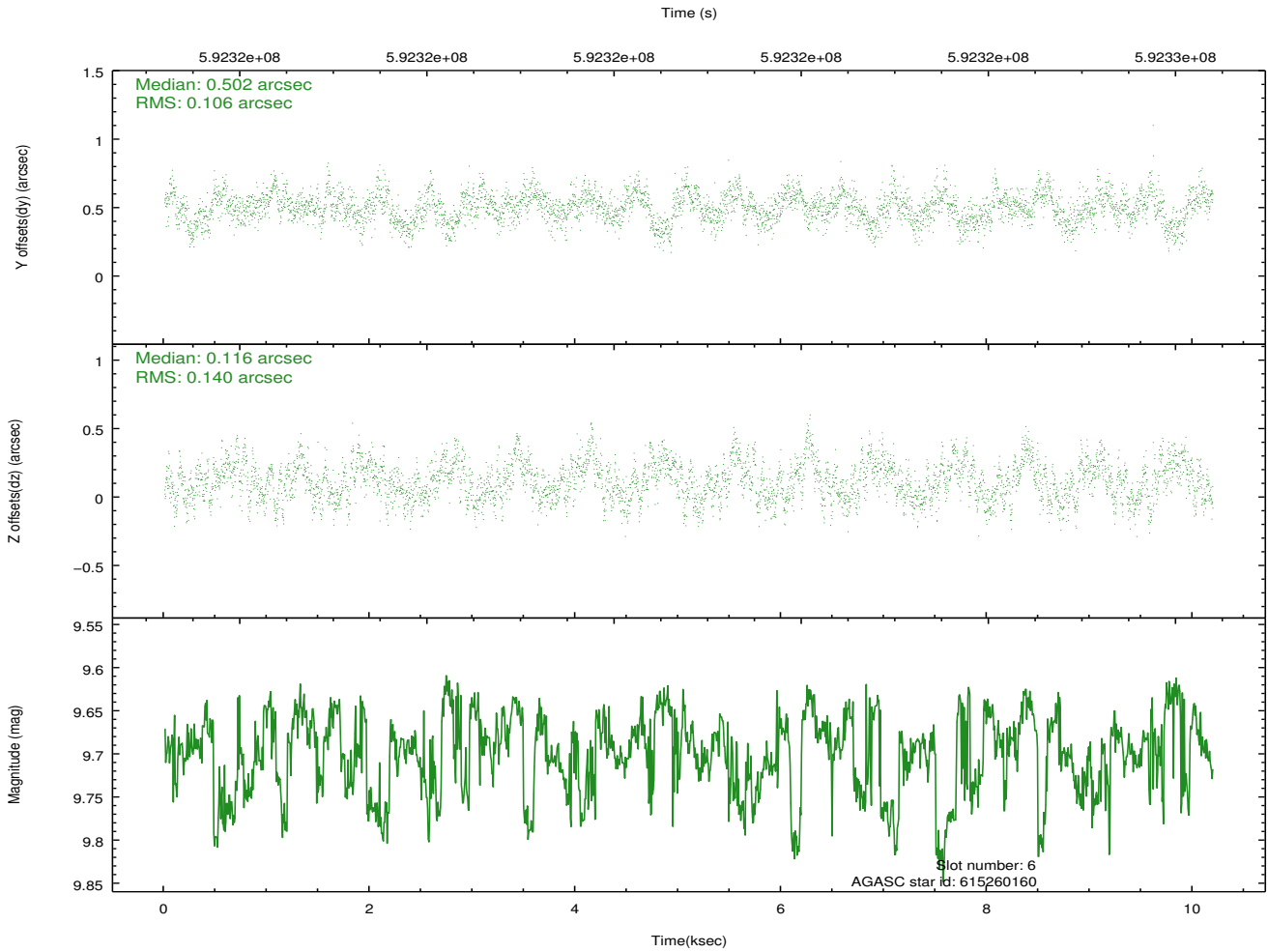
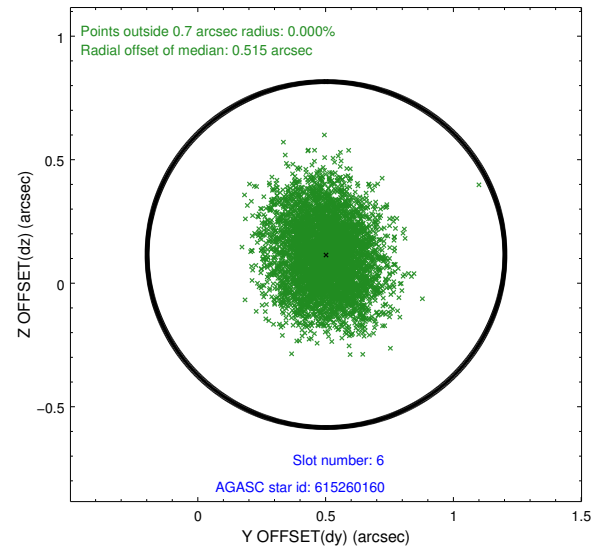
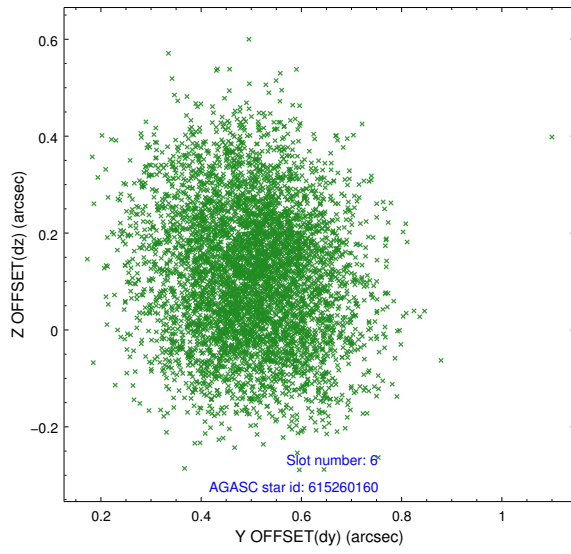
2.4.2 Slot 4



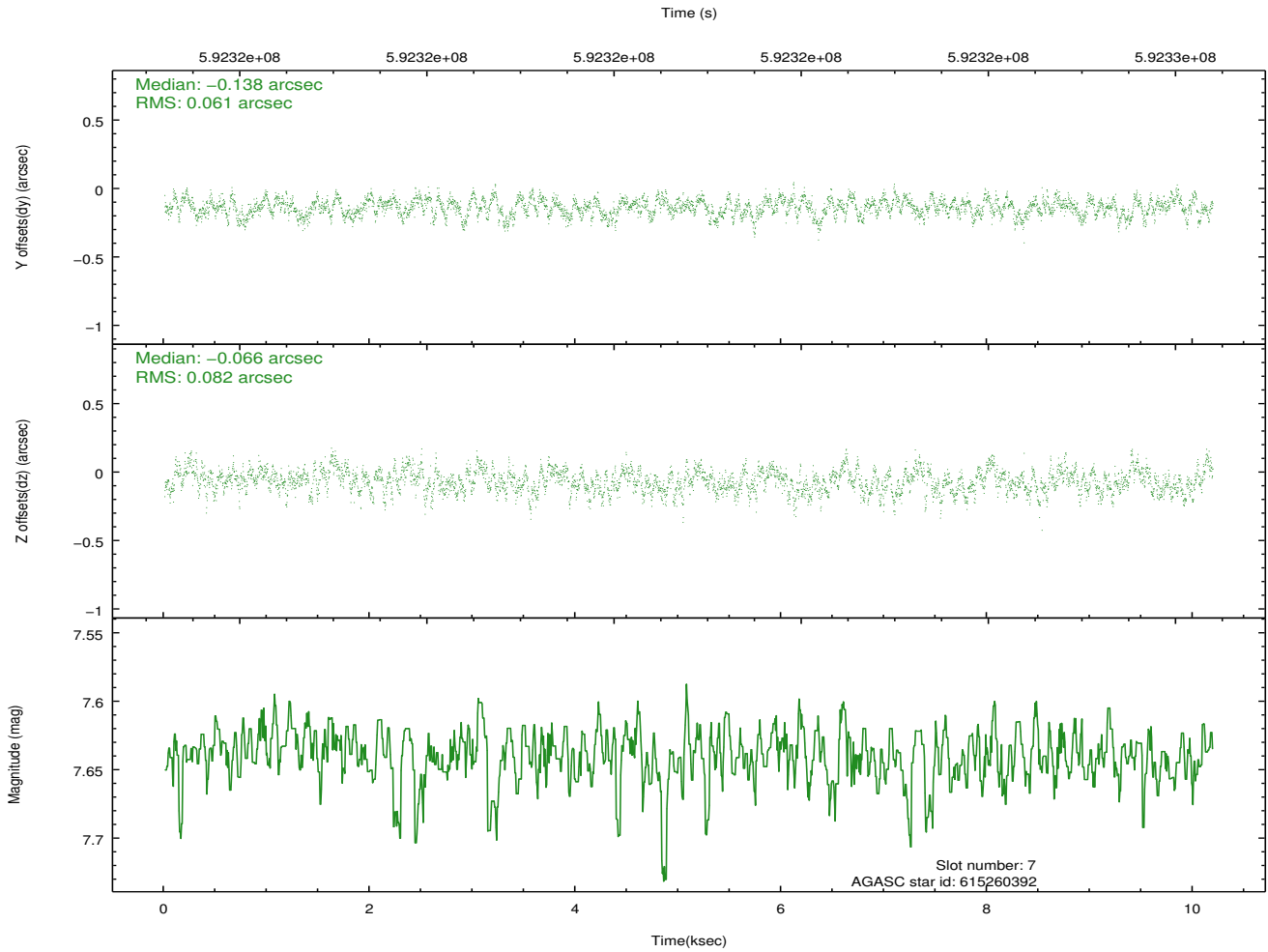
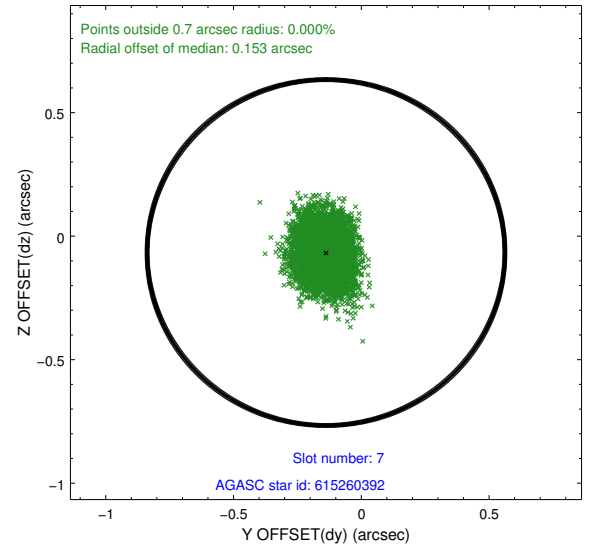
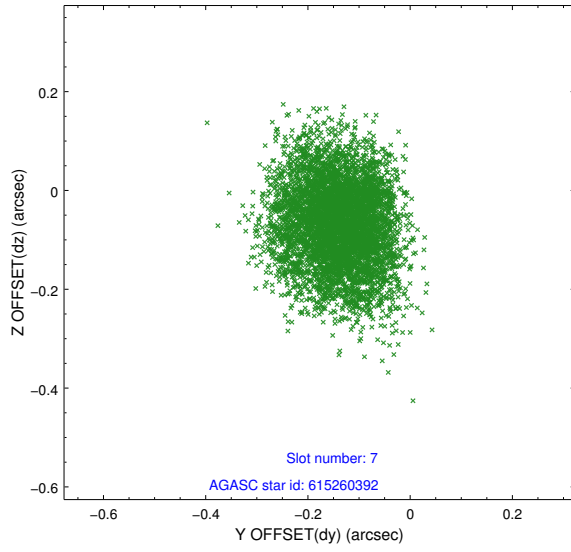
2.4.3 Slot 5



2.4.4 Slot 6

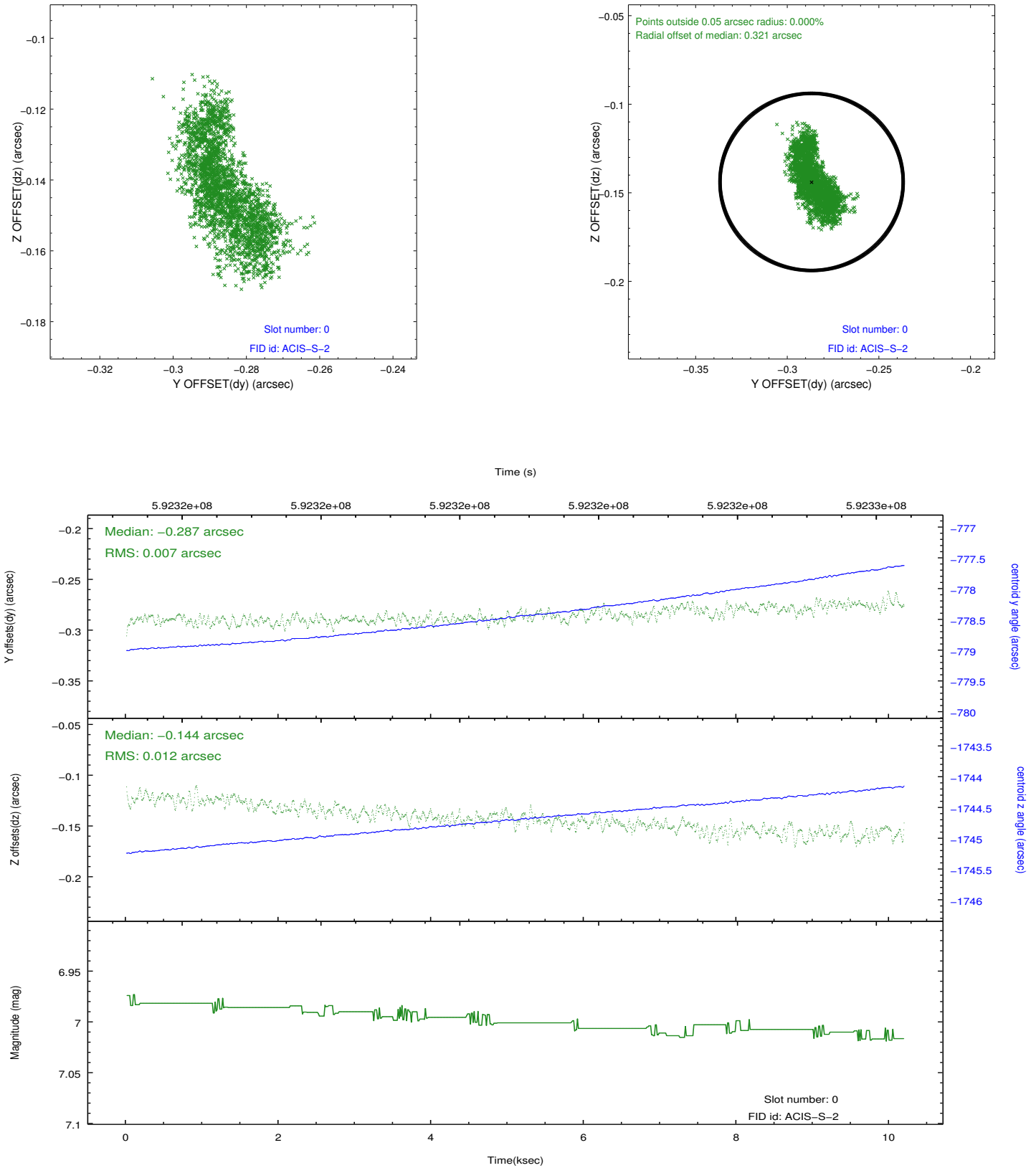


2.4.5 Slot 7

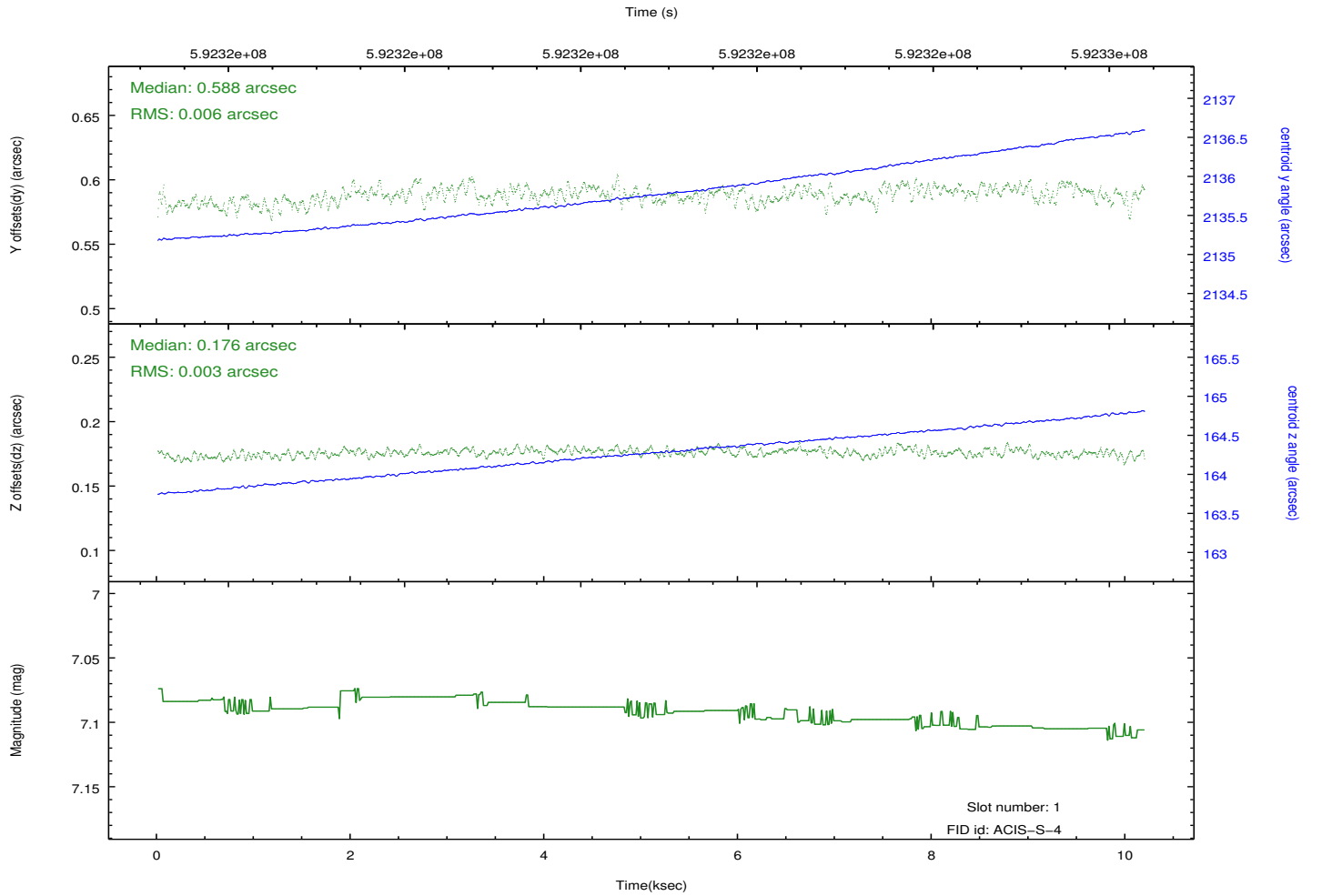
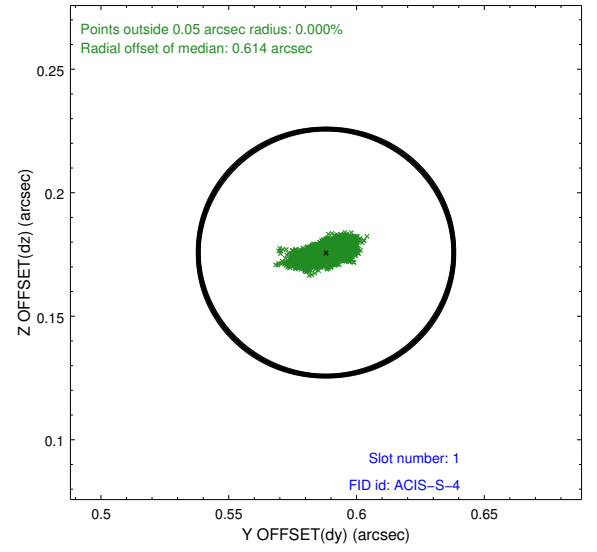
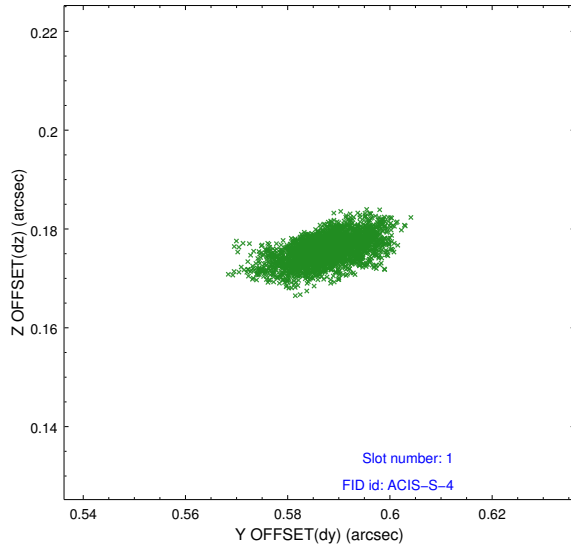


2.5 FID Slots

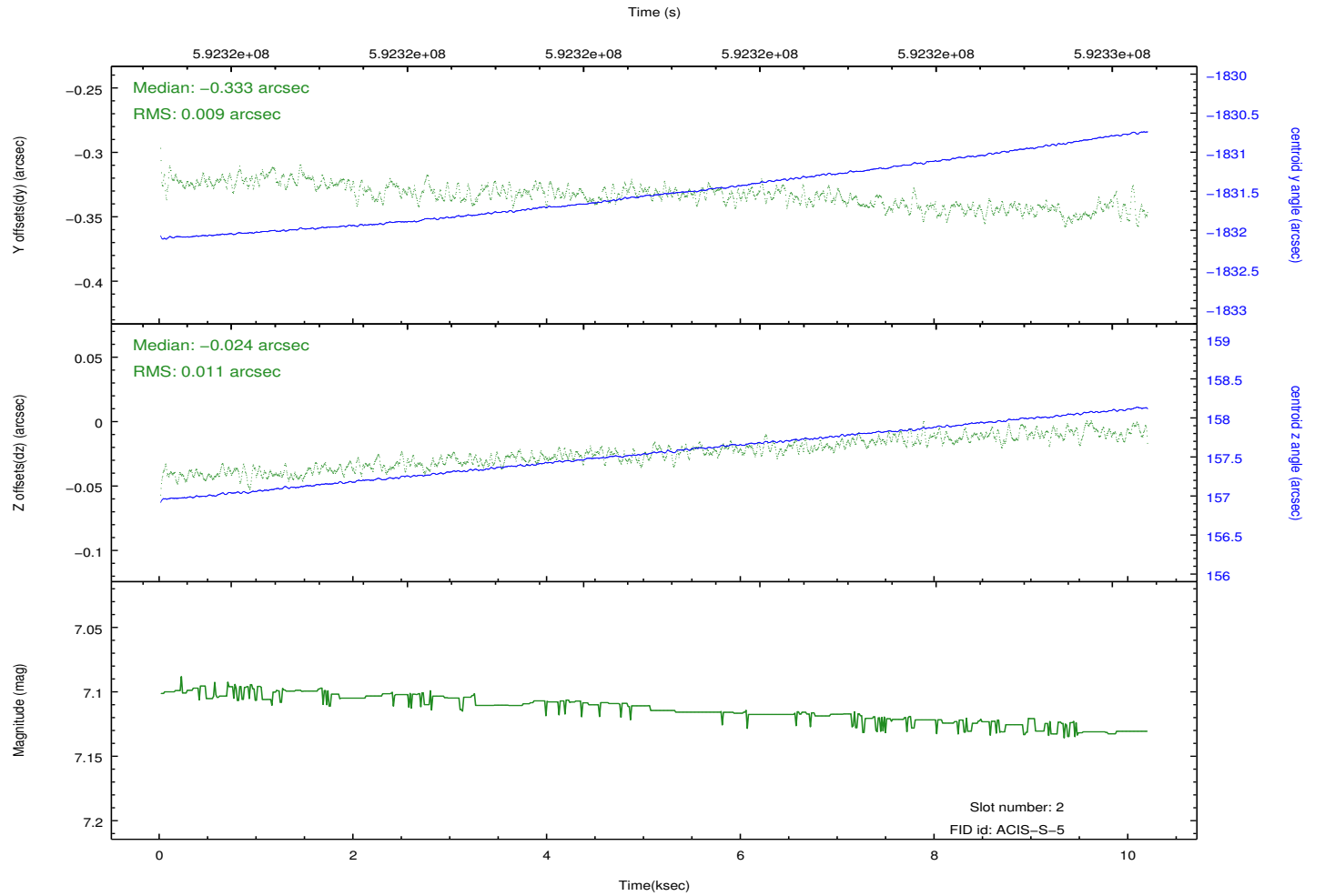
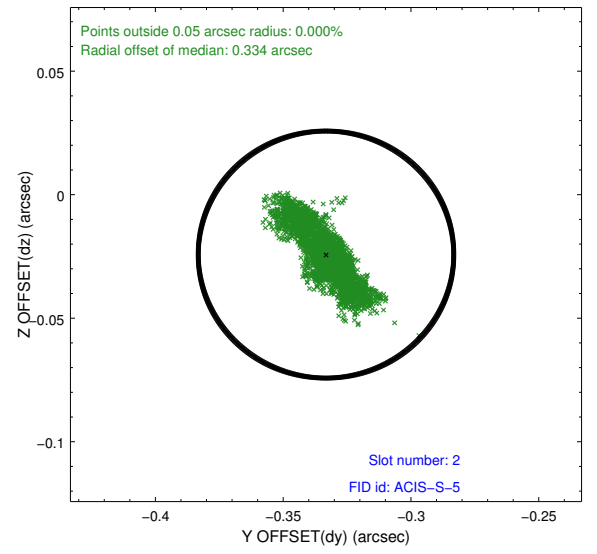
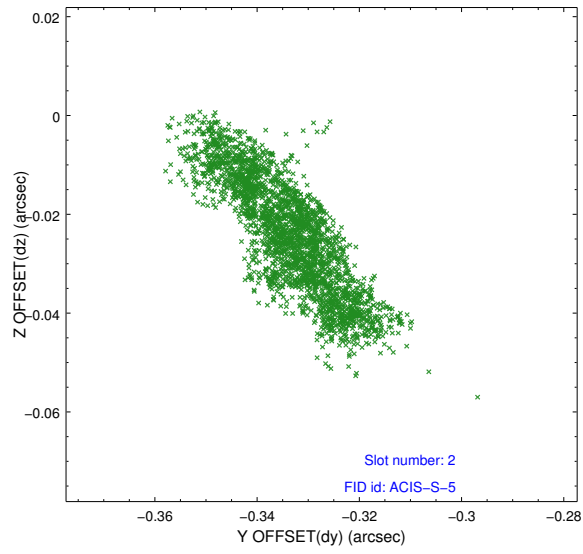
2.5.1 Slot 0



2.5.2 Slot 1



2.5.3 Slot 2



A Summary

A.1 Status

V&V Scientist	Jen Lauer
V&V Date (YYYY-MM-DD)	2016.10.11
V&V Edition	1
V&V Disposition and Status	OK
V&V Charge Time	9.7743000752926

A.2 Comments