

V&V Reference Report

L2 ASCDS Version : 10.5

Observation 18222 - L2 Version 1
Chandra X-Ray Center

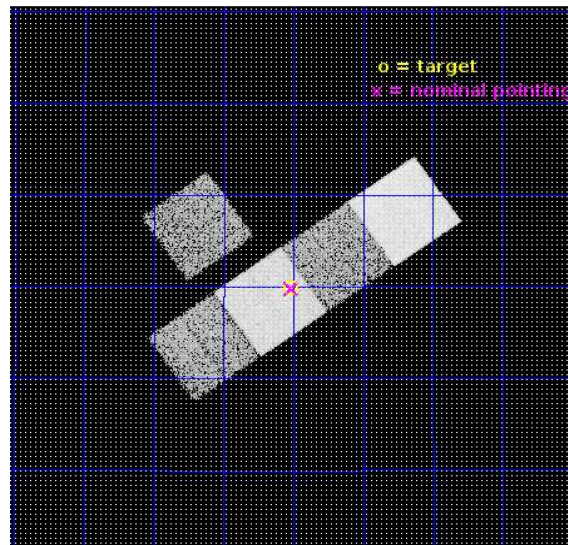
L2 Processing Date : Aug 9 2016

Contents

1	Front	2
2	OBI	3
2.1	OBI	3
2.1.1	Images	3
2.1.2	Bias	3
2.1.3	Parameters	4
2.1.4	Events	4
2.2	Compared Parameters	5
2.3	Aspect	6
2.4	Star Slots	9
2.4.1	Slot 3	9
2.4.2	Slot 4	10
2.4.3	Slot 5	11
2.4.4	Slot 6	12
2.4.5	Slot 7	13
2.5	FID Slots	14
2.5.1	Slot 0	14
2.5.2	Slot 1	15
2.5.3	Slot 2	16
A	Summary	17
A.1	Status	17
A.2	Comments	17

1 Front

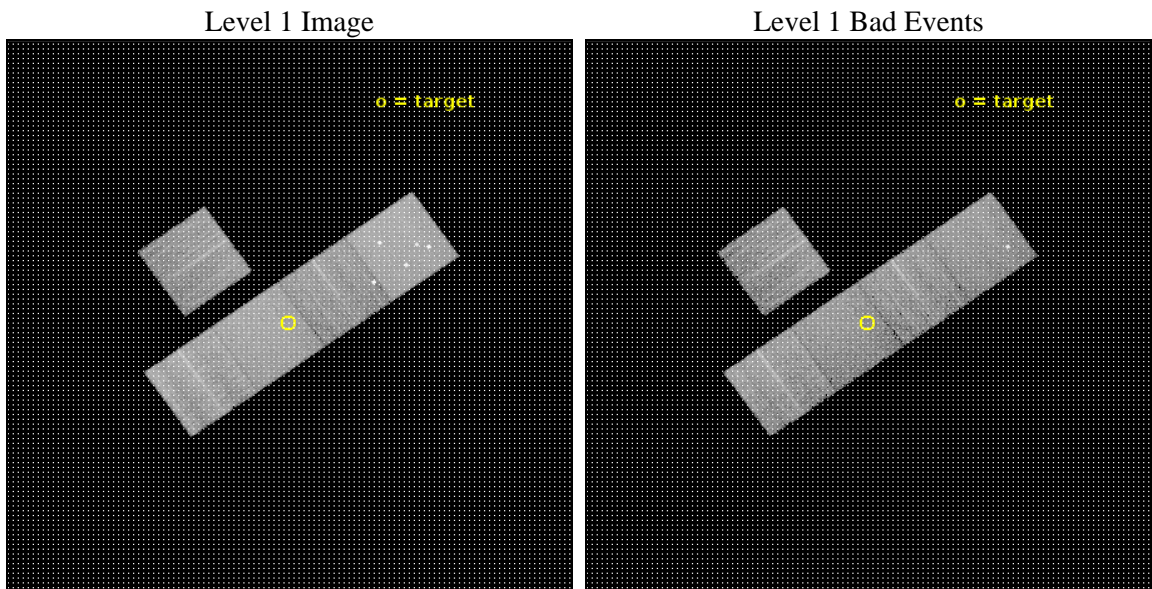
seq_num	801550	Sequence number
obs_id	18222	Observation id
title	Searching for Fossil Group Progenitors Via Strong Gravitational Lensing	Proposal title
observer	Lucas Johnson	Principal investigator
object	CSWA 10	Source name
dtcycle	0	
cycle	P	events from which exps? Prim/Second/Both
ra_targ	339.630417	Observer's specified target RA [deg]
dec_targ	13.332111	Observer's specified target Dec [deg]
ra_nom	339.62867243241	Nominal RA [deg]
dec_nom	13.330238055955	Nominal Dec [deg]
roll_nom	144.85697157899	Nominal Roll [deg]
revision	1	Processing version of data
ontime	12055.382430315	Sum of GTIs [s]
livetime	11897.86998382	Livetime [s]
ontime3	12055.259310365	Sum of GTIs [s]
ontime5	12055.341390371	Sum of GTIs [s]
ontime6	12055.300350308	Sum of GTIs [s]
ontime7	12055.382430315	Sum of GTIs [s]
ontime8	12048.936160088	Sum of GTIs [s]
l2events	120088	Number of level 2 events



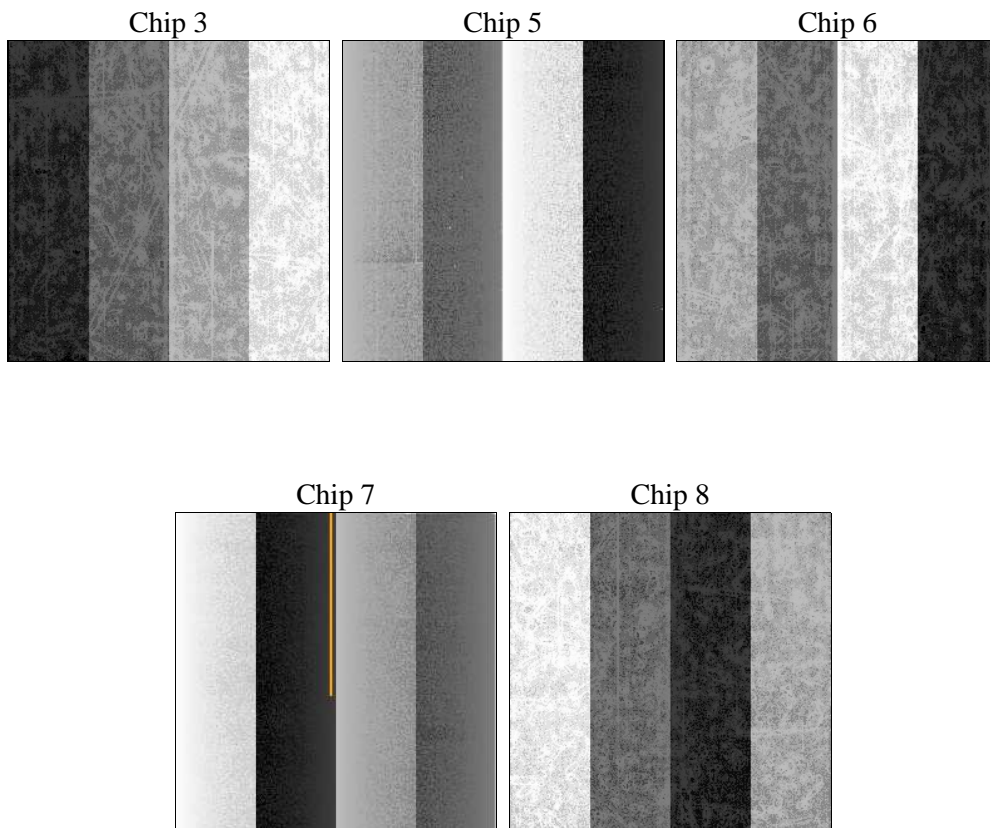
2 OBI

2.1 OBI

2.1.1 Images



2.1.2 Bias



2.1.3 Parameters

obi_num	0	Obi number	sched_exp_time	12000.000000	[s] Scheduled observation exposure time
ascdsver	10.5	Processing system revision	ontime	12055.382430315	Sum of GTIs [s]
caldsver	4.7.2	 	ontime3	12055.259310365	Sum of GTIs [s]
date	2016-08-10T00:50:40	Date and time of file creation	ontime5	12055.341390371	Sum of GTIs [s]
revision	1	Processing version of data	ontime6	12055.300350308	Sum of GTIs [s]
			ontime7	12055.382430315	Sum of GTIs [s]
			ontime8	12048.936160088	Sum of GTIs [s]
			l1events	480212	Number of level 1 events

2.1.4 Events

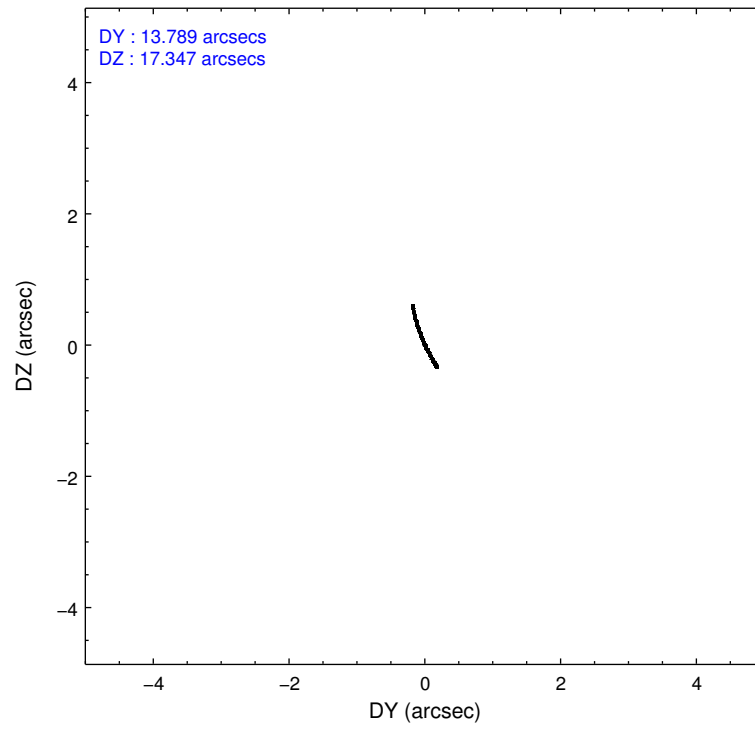
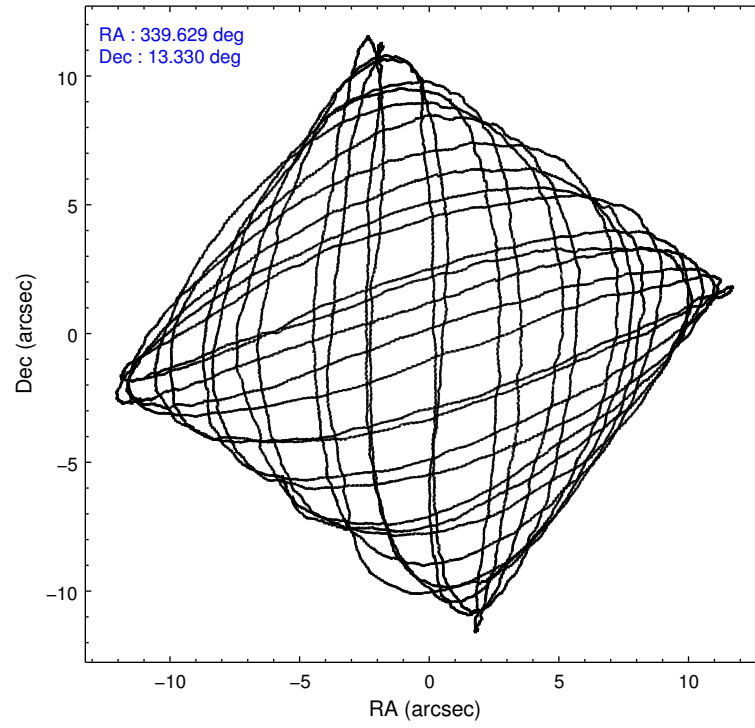
	ccd 3	ccd 5	ccd 6	ccd 7	ccd 8
level 1 events	71257	131602	77239	99617	100497
rejected events	63576	65641	64611	56600	73580
rejected %	89%	49%	83%	56%	73%

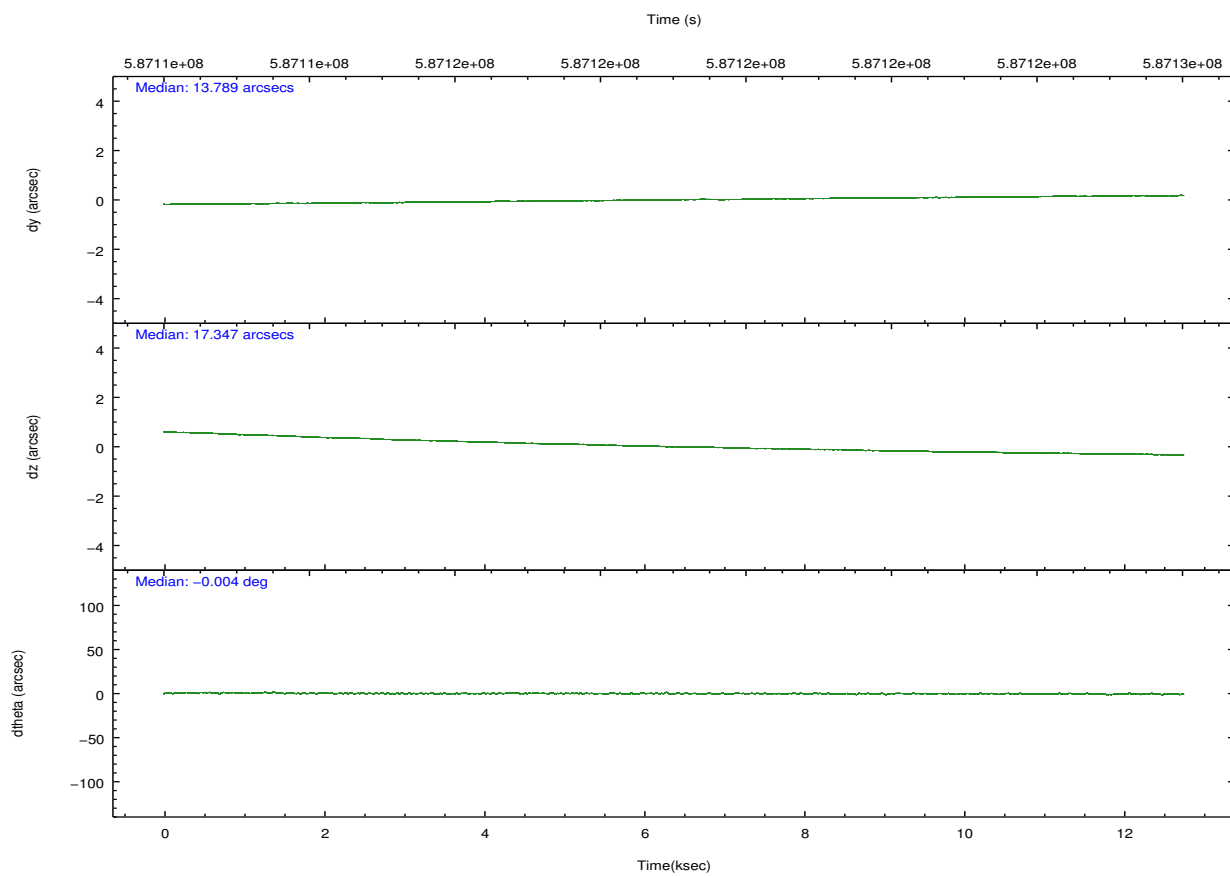
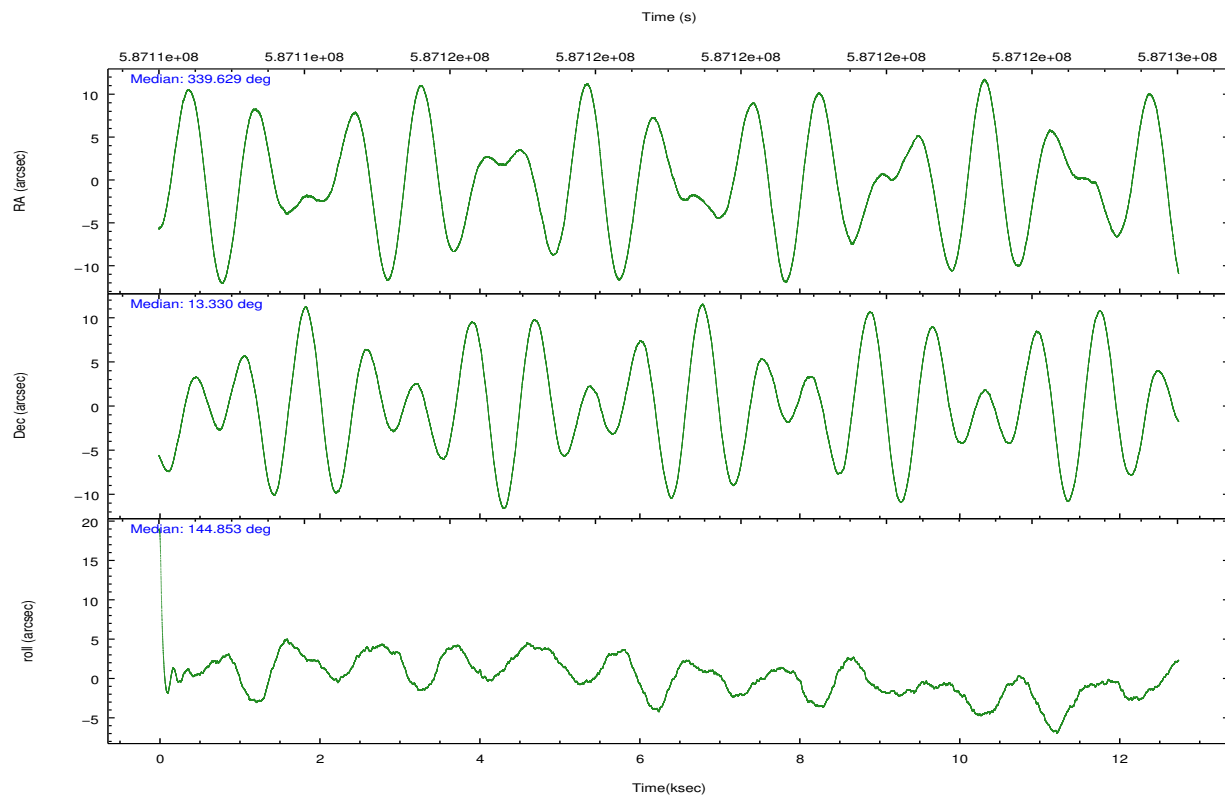
	ccd 3	ccd 5	ccd 6	ccd 7	ccd 8
grade 0 events	2599	11289	6723	3542	7281
	3%	8%	8%	3%	7%
grade 1 events	44	233	40	145	72
	0%	0%	0%	0%	0%
grade 2 events	1736	19057	2056	9212	6600
	2%	14%	2%	9%	6%
grade 3 events	875	1922	877	3359	2882
	1%	1%	1%	3%	2%
grade 4 events	842	1820	876	3488	2649
	1%	1%	1%	3%	2%
grade 5 events	3572	8894	3773	9999	5453
	5%	6%	4%	10%	5%
grade 6 events	1634	31915	2099	23438	7530
	2%	24%	2%	23%	7%
grade 7 events	59955	56472	60795	46434	68030
	84%	42%	78%	46%	67%

2.2 Compared Parameters

Parameter	Planned	Actual	Parameter	Planned	Actual
Instrument	ACIS	ACIS	Obspar format version number	7	7
Detector	ACIS-35678	ACIS-35678	Obspar file type	PREDICTED	ACTUAL
Grating	NONE	NONE	Obspar update status	NONE	UPDATED
Data mode	VFAINT	VFAINT	CCD I0 on	N	N
Observation mode	POINTING	POINTING	CCD I1 on	N	N
[deg] Pointing RA	339.656774	339.6286724324061	CCD I2 on	N	N
[deg] Pointing Dec	13.328164	13.33023805595517	CCD I3 on	Y	Y
[deg] Pointing Roll	144.693863	144.856971578991	CCD S0 on	N	N
[mm] SIM focus pos	-0.684267	-0.6828225247311905	CCD S1 on	Y	Y
[mm] SIM defocus	0	0.001444936568705701	CCD S2 on	Y	Y
[mm] SIM translation stage pos	-190.132523	-190.1425803651734	CCD S3 on	Y	Y
[mm] SIM translation stage offset	0	0.01005778216563158	CCD S4 on	O1	Y
[s] Observation start time (MET)	587113376.184000	587112156.81751	CCD S5 on	N	N
Observation start date	2016-08-09T07:01:48	2016-08-09T06:42:36	Number of optional ACIS chips dropped	0	0
[s] Observation end time (MET)	587125376.184000	587126322.31833	On-chip summing requested	N	N
Observation end date	2016-08-09T10:21:48	2016-08-09T10:38:42	Subarray requested	NONE	NONE
Read mode	TIMED	TIMED	Alternating exposures requested	N	N
			[s] Primary exposure time	0.000000	3.1

2.3 Aspect



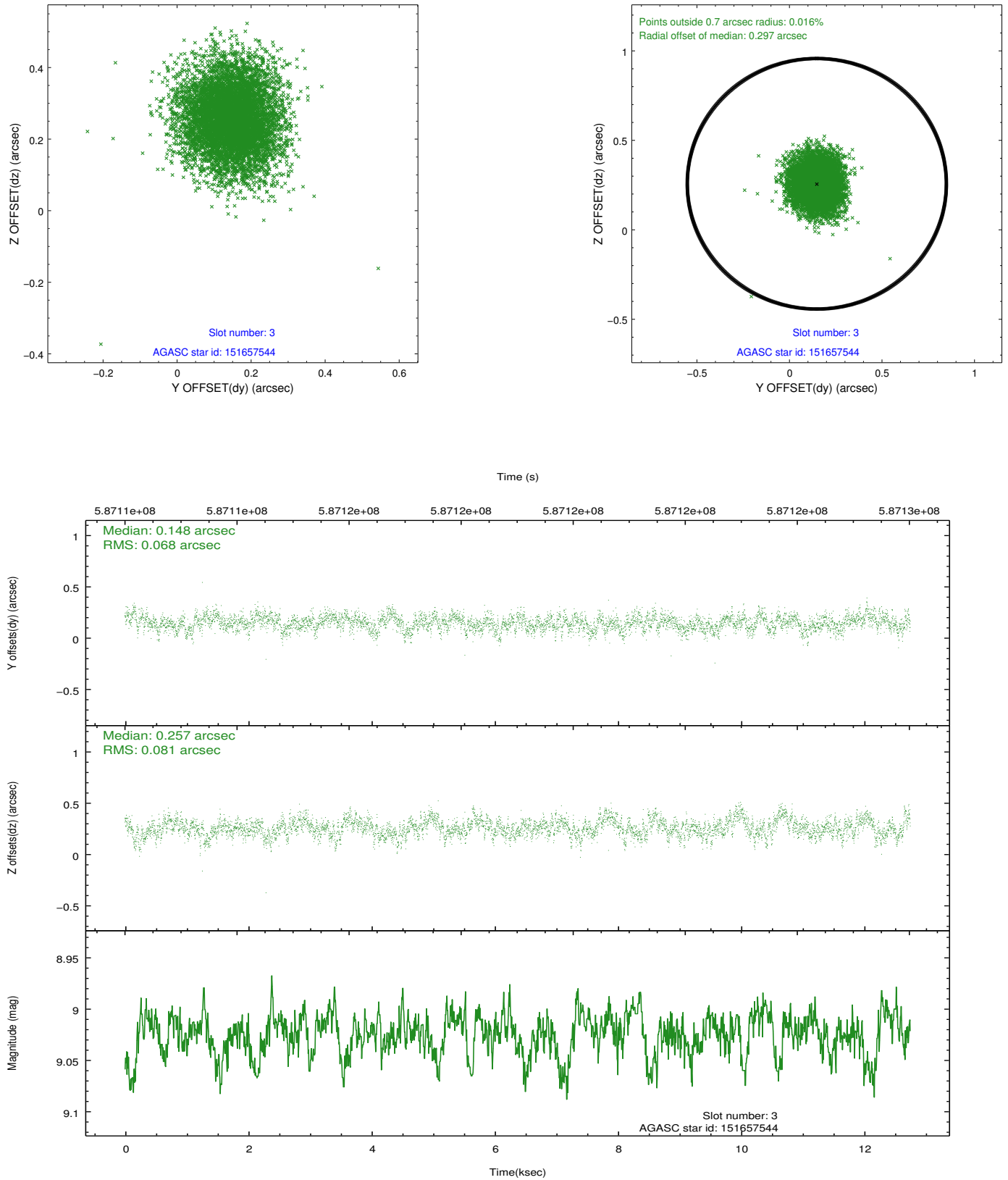


Slot Statistics

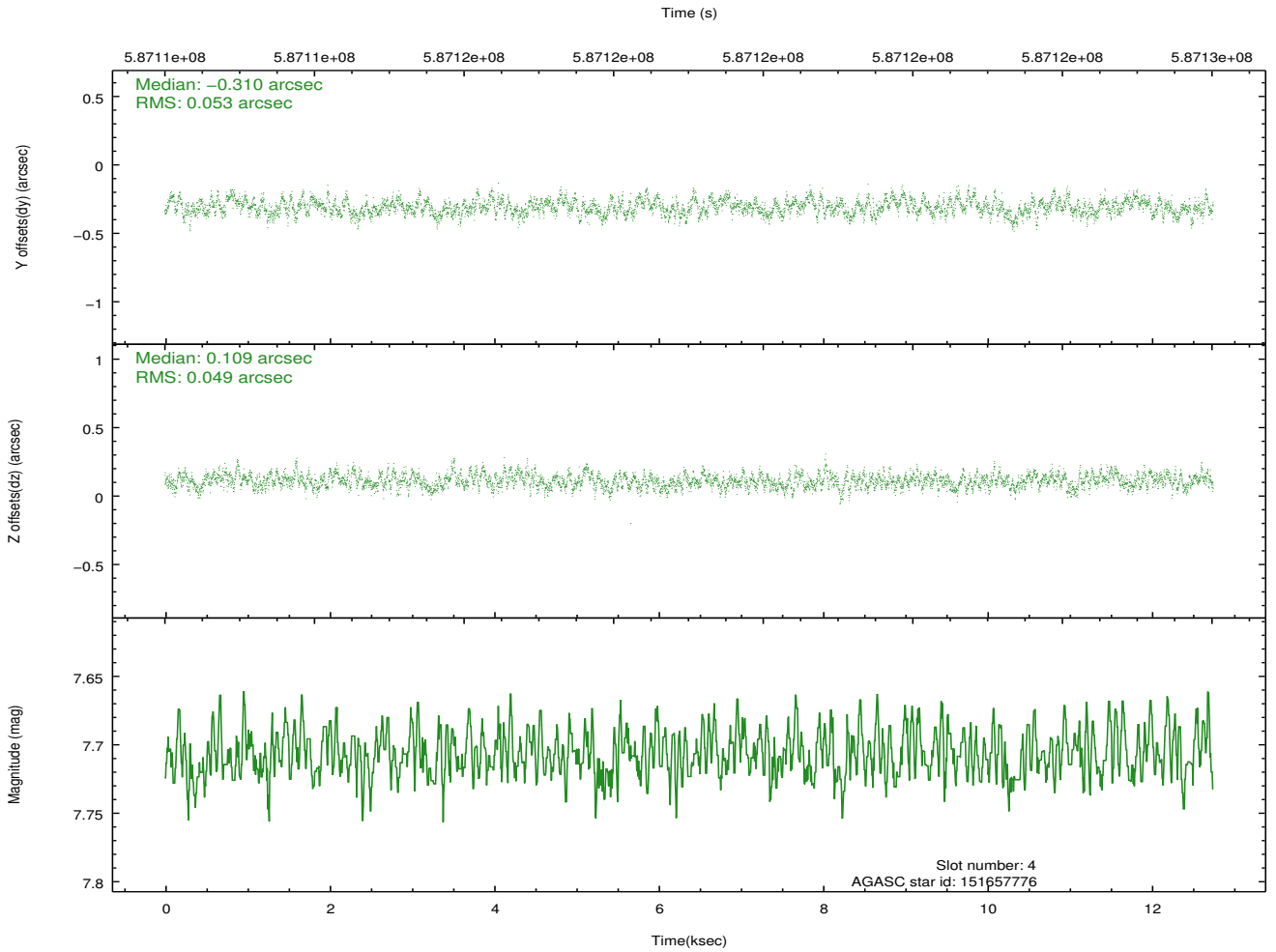
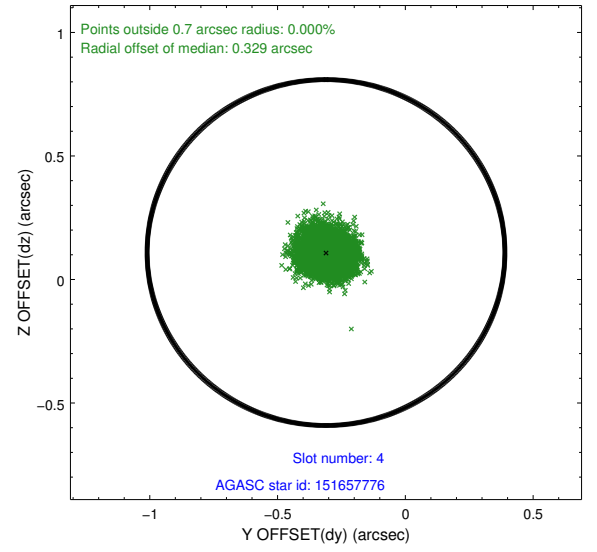
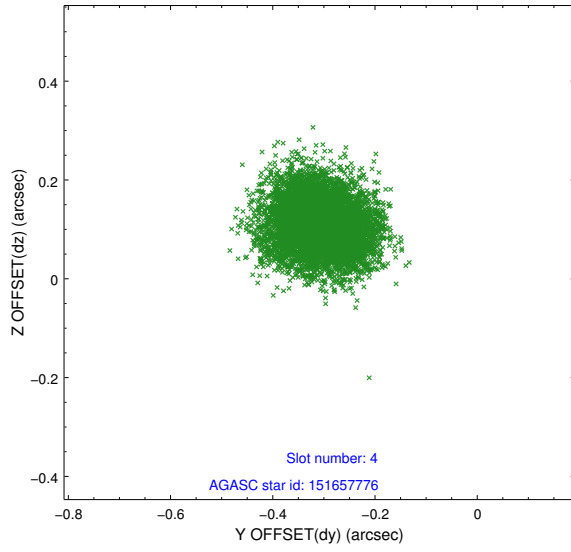
slot	status	used	id	mag	n_pts	med_dy	med_dz	dr1	dr2	ra	dec	mean_y	mean_z
0	FID		ACIS-S-2	6.99	3110	-0.128	-0.074	0.012	0.023	0.000000	0.000000	-766.86	-1738.86
1	FID		ACIS-S-4	7.10	3110	0.387	0.082	0.007	0.013	0.000000	0.000000	2146.76	169.37
2	FID		ACIS-S-5	7.11	3110	-0.291	0.001	0.011	0.021	0.000000	0.000000	-1819.37	163.41
3	GUIDE	used	151657544	9.02	6212	0.148	0.257	0.112	0.183	339.516159	13.558393	879.78	-391.14
4	GUIDE	used	151657776	7.71	6221	-0.310	0.109	0.077	0.124	339.157102	13.464593	1712.49	609.26
5	GUIDE	used	151658496	8.99	6217	-0.239	-0.247	0.173	0.254	339.261771	13.499765	1486.30	294.33
6	GUIDE	used	151788416	9.07	6216	0.245	-0.015	0.111	0.183	339.869851	12.708687	-1898.82	1387.45
7	GUIDE	used	151790472	8.80	6216	0.145	-0.093	0.118	0.195	339.871579	12.653045	-2020.34	1547.41

2.4 Star Slots

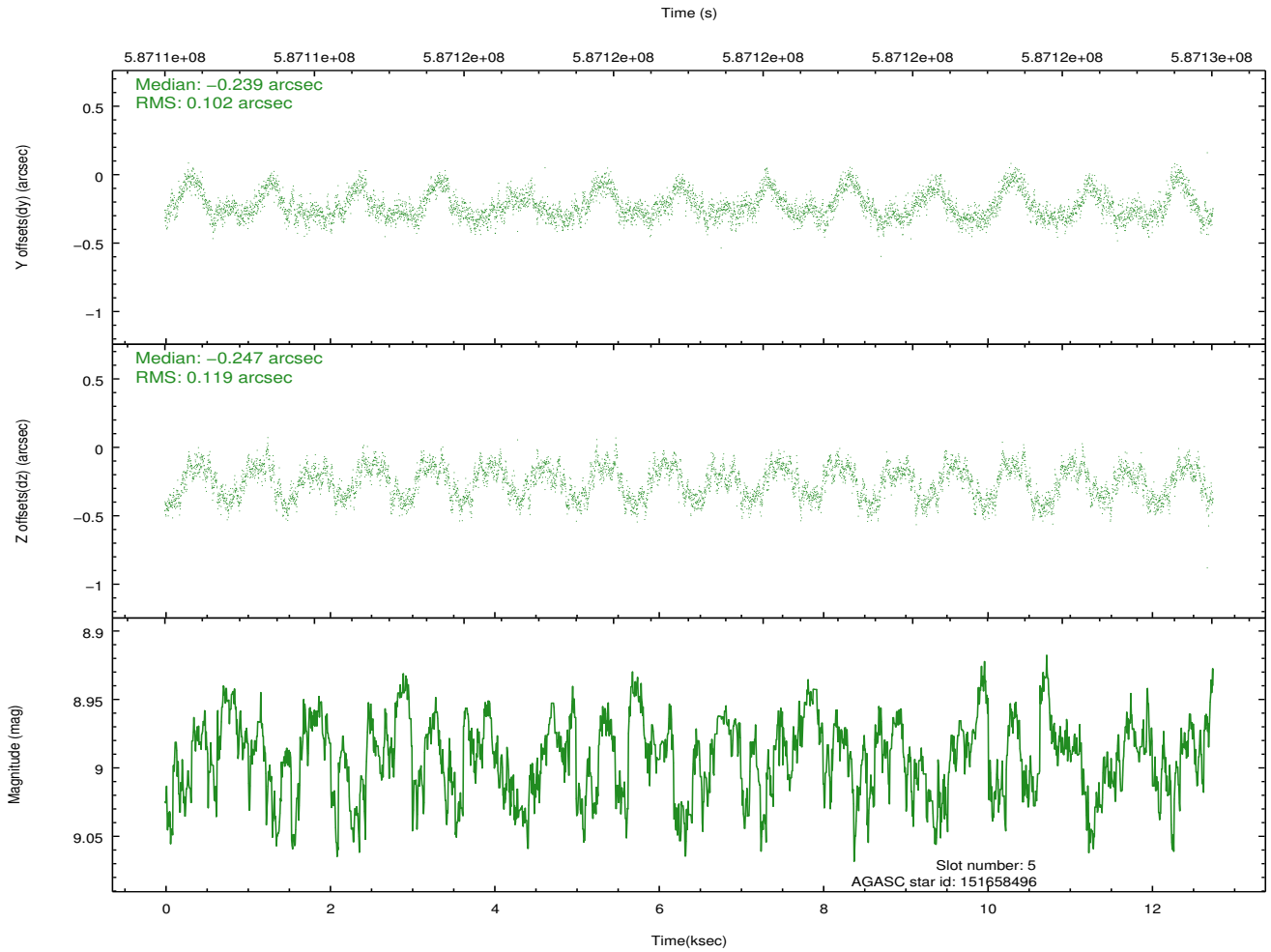
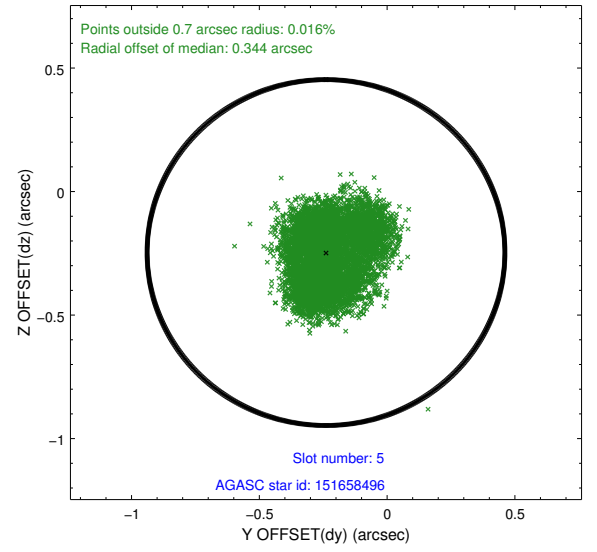
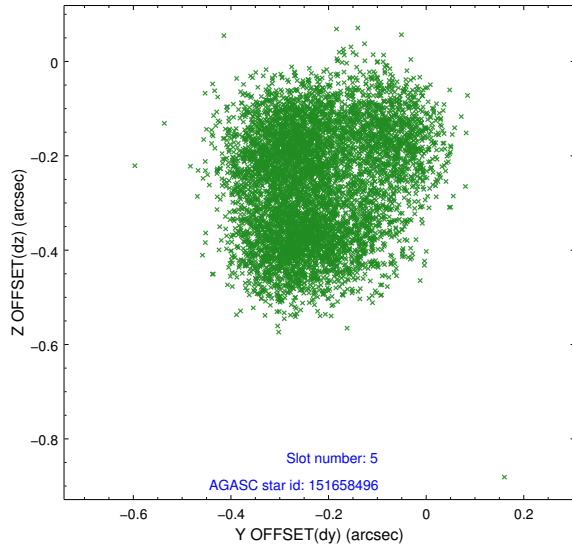
2.4.1 Slot 3



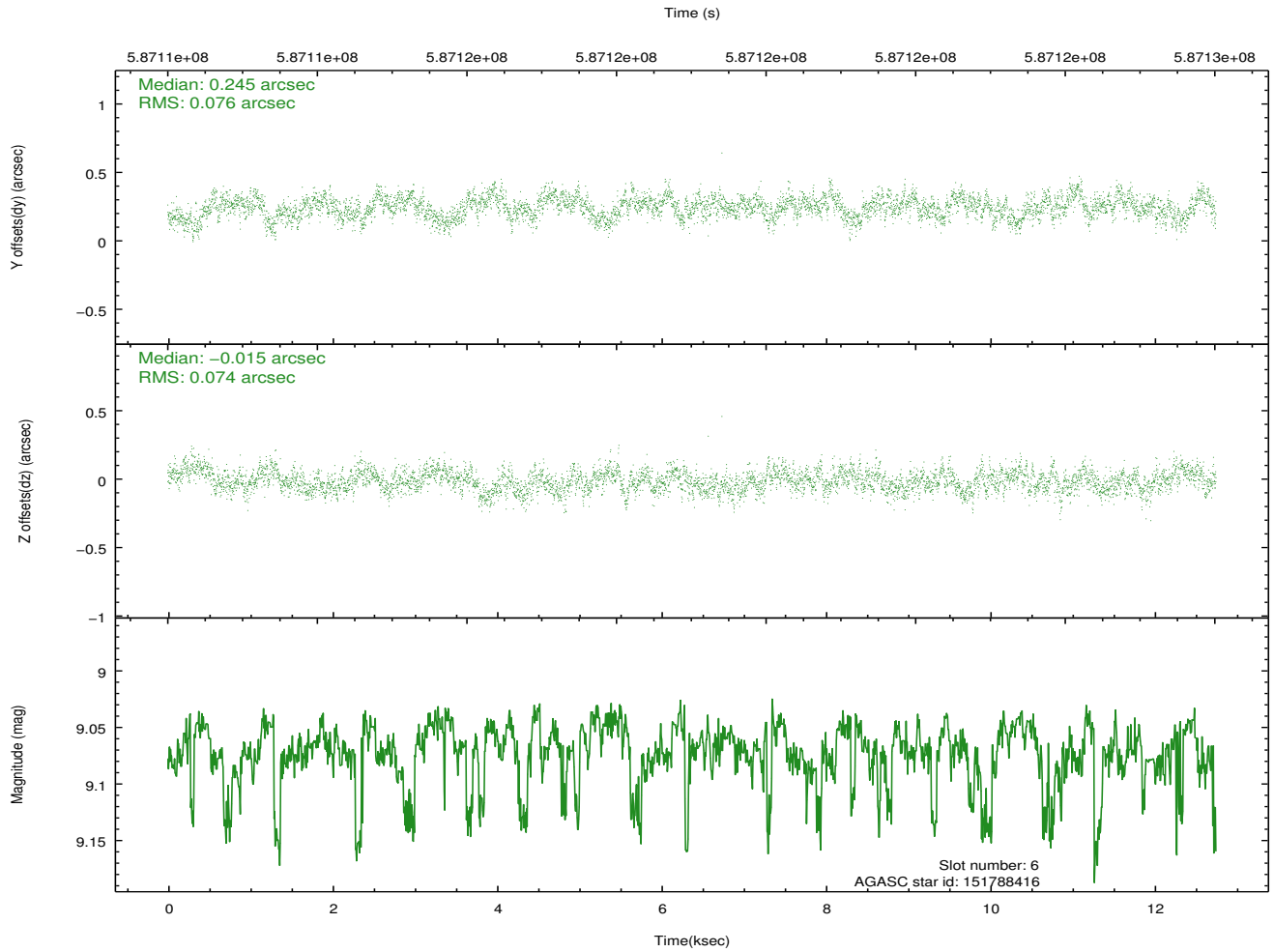
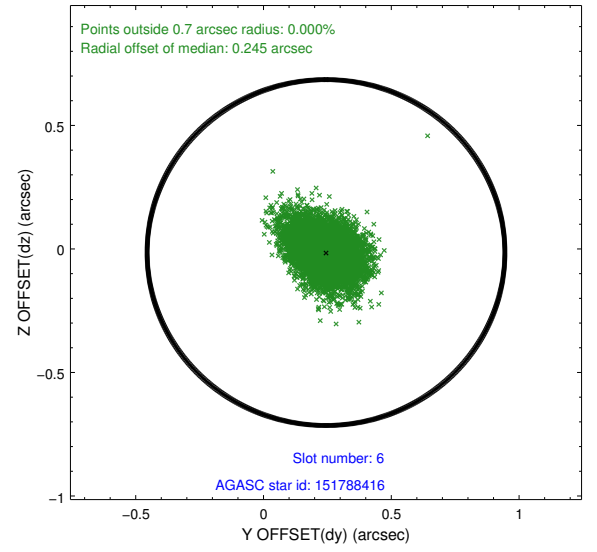
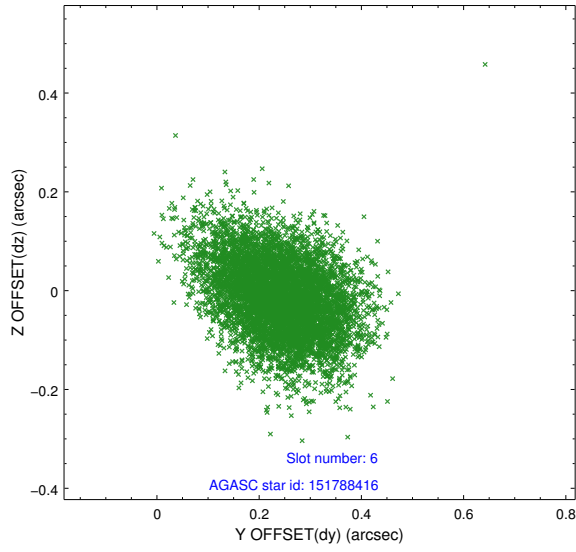
2.4.2 Slot 4



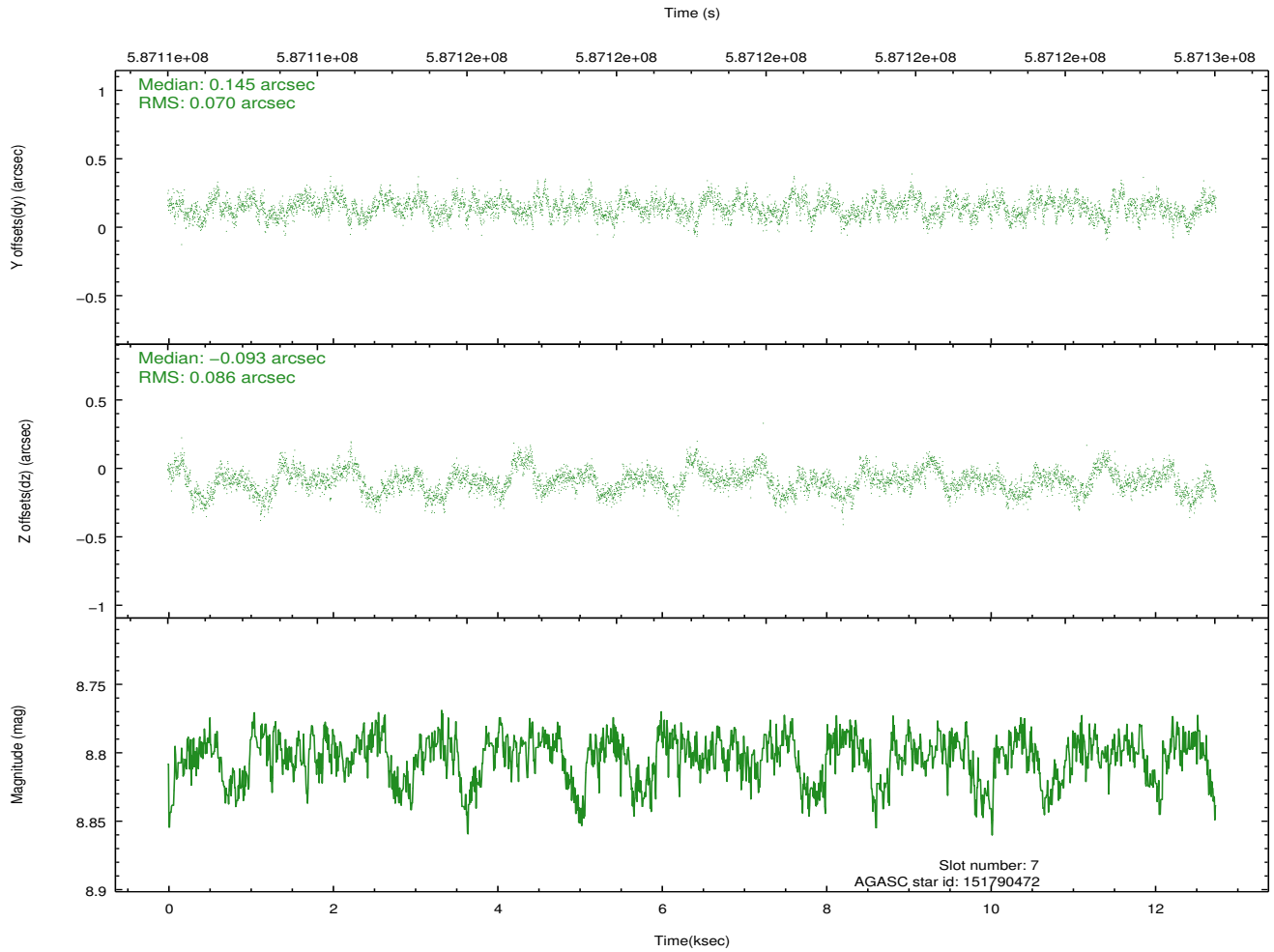
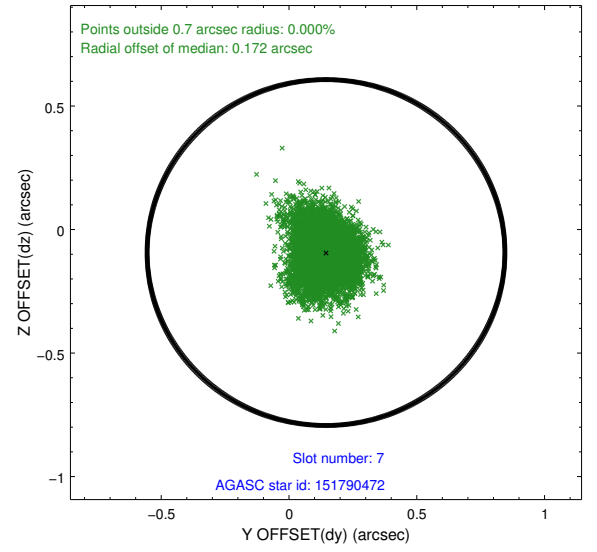
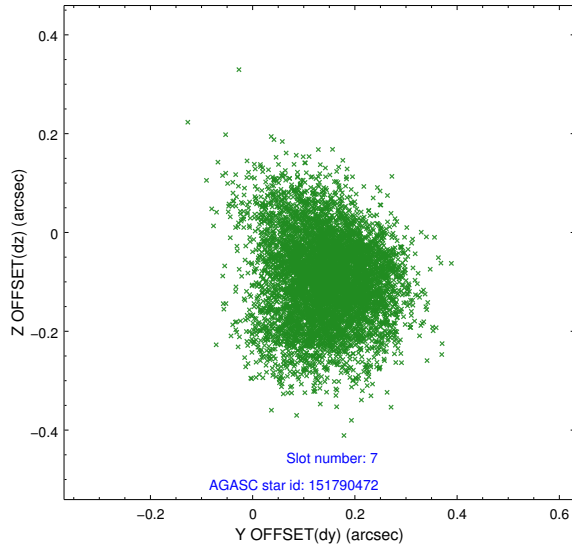
2.4.3 Slot 5



2.4.4 Slot 6

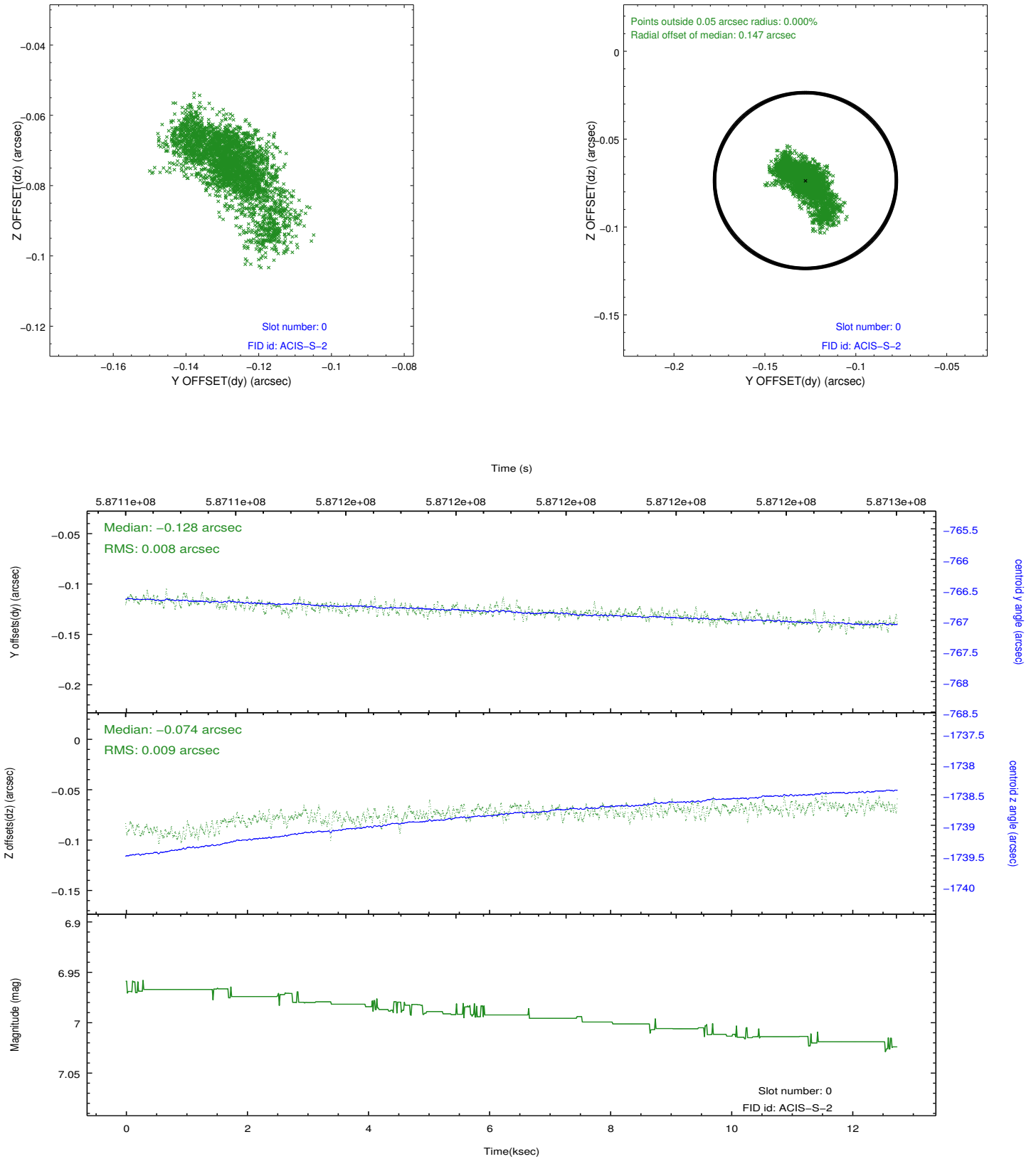


2.4.5 Slot 7

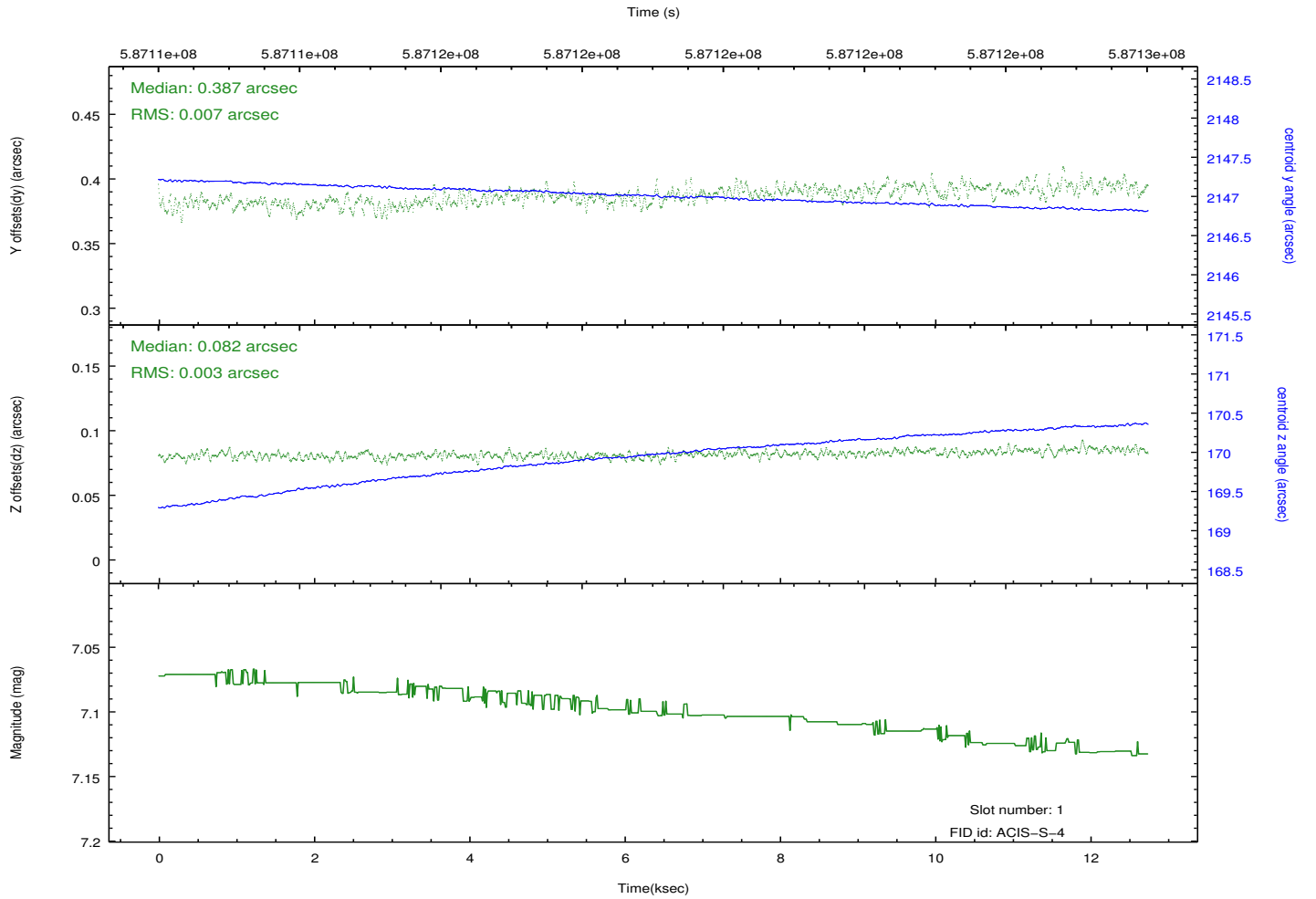
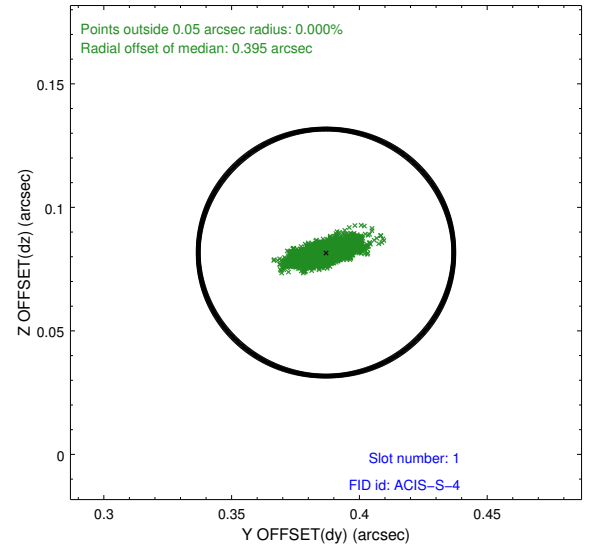
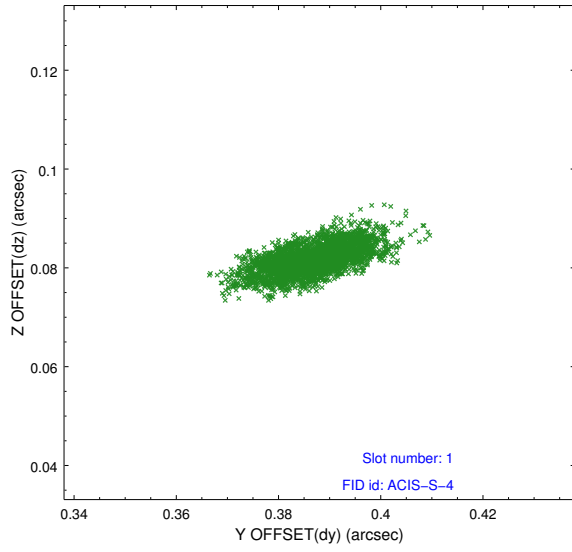


2.5 FID Slots

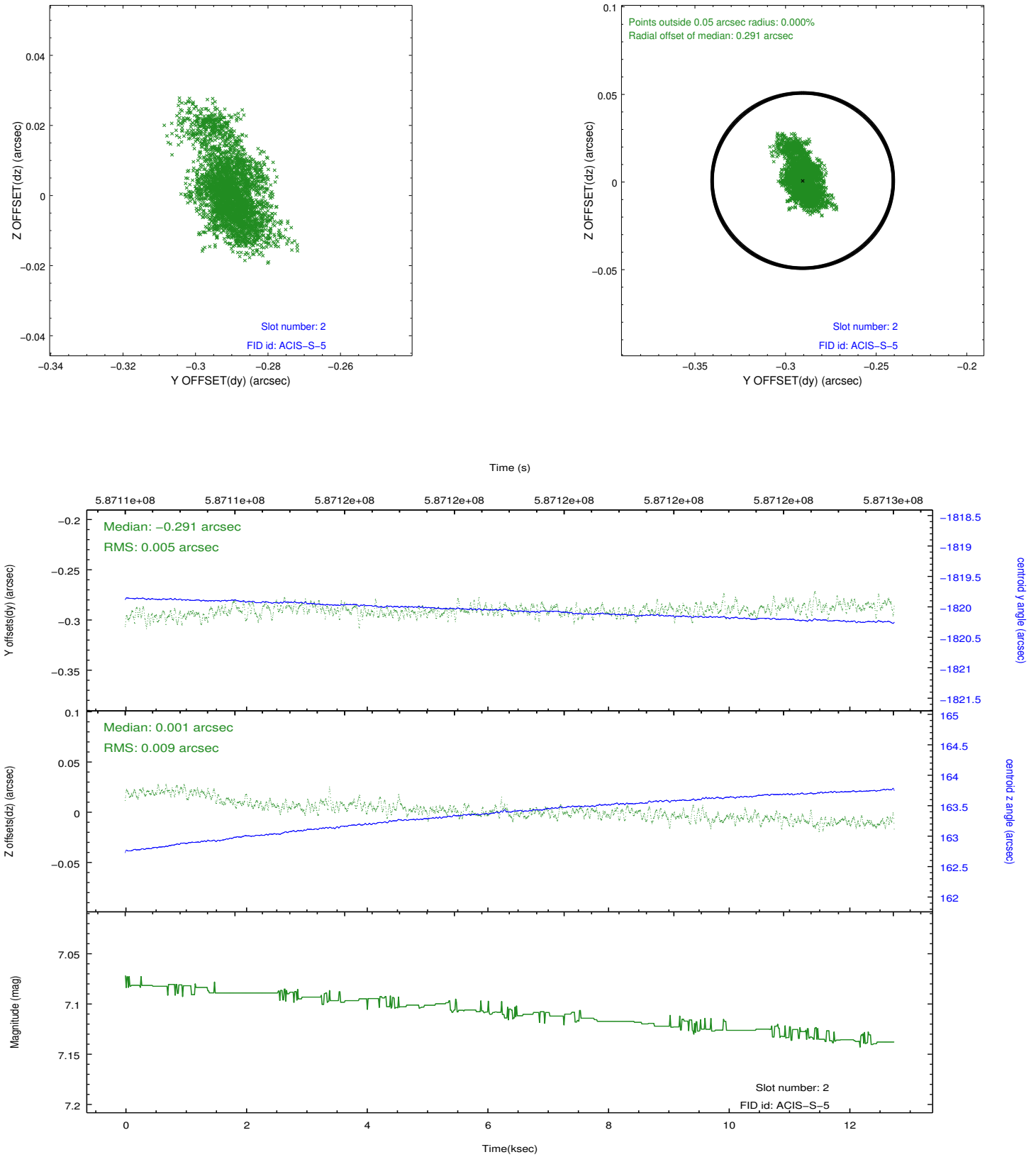
2.5.1 Slot 0



2.5.2 Slot 1



2.5.3 Slot 2



A Summary

A.1 Status

V&V Scientist	Beth Sundheim
V&V Date (YYYY-MM-DD)	2016.08.09
V&V Edition	1
V&V Disposition and Status	OK
V&V Charge Time	12.055382430315

A.2 Comments

Joint proposal with HST.