

# V&V Reference Report

## L2 ASCDS Version : 10.5.1.1

Observation 18175 - L2 Version 1  
Chandra X-Ray Center

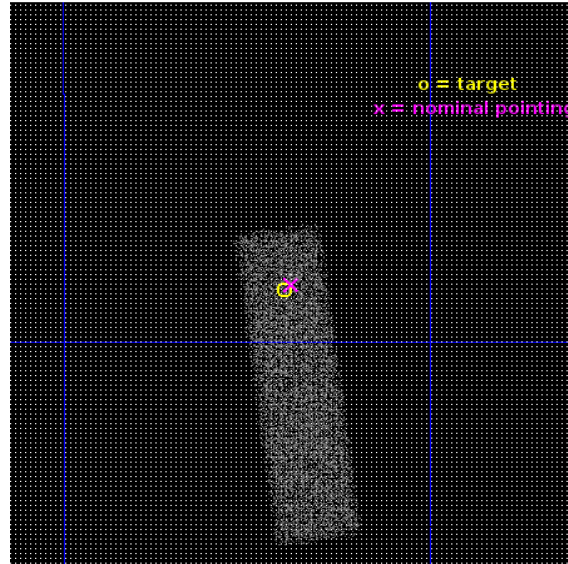
L2 Processing Date : Sep 4 2016

## Contents

<b>1</b>	<b>Front</b>	<b>2</b>
<b>2</b>	<b>OBI</b>	<b>3</b>
2.1	OBI . . . . .	3
2.1.1	Images . . . . .	3
2.1.2	Bias . . . . .	3
2.1.3	Parameters . . . . .	4
2.1.4	Events . . . . .	4
2.2	Compared Parameters . . . . .	5
2.3	Aspect . . . . .	6
2.4	Star Slots . . . . .	9
2.4.1	Slot 3 . . . . .	9
2.4.2	Slot 4 . . . . .	10
2.4.3	Slot 5 . . . . .	11
2.4.4	Slot 6 . . . . .	12
2.4.5	Slot 7 . . . . .	13
2.5	FID Slots . . . . .	14
2.5.1	Slot 0 . . . . .	14
2.5.2	Slot 1 . . . . .	15
2.5.3	Slot 2 . . . . .	16
<b>A</b>	<b>Summary</b>	<b>17</b>
A.1	Status . . . . .	17
A.2	Comments . . . . .	17

# 1 Front

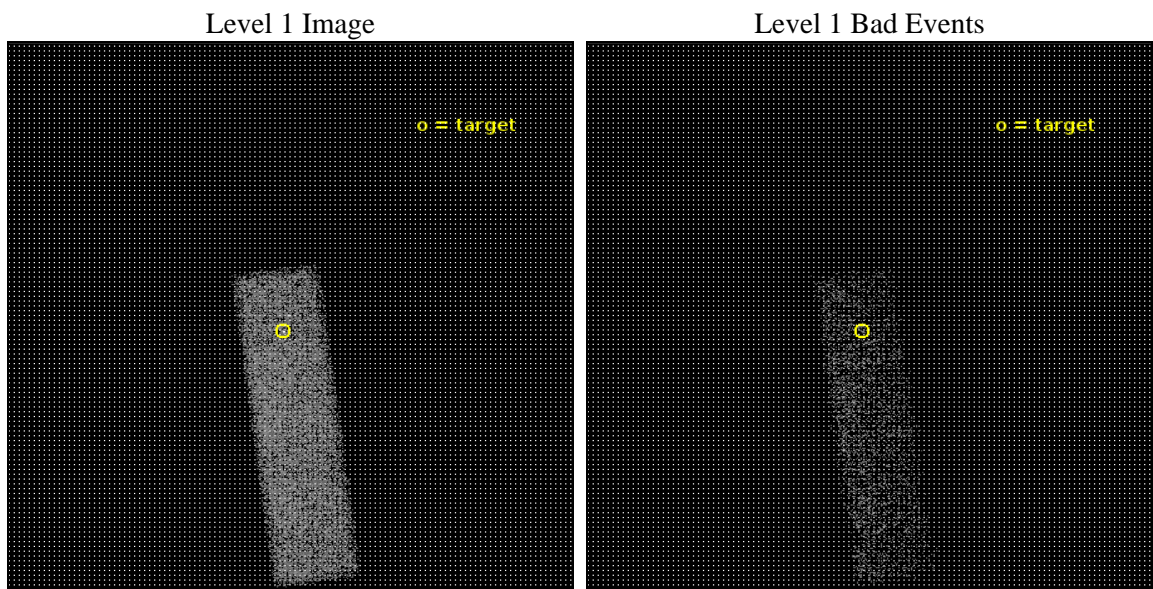
seq_num	703240	Sequence number
obs_id	18175	Observation id
title	Chandra Legacy Survey of Merger Driven AGN Activation in Nearby X-ray Selected AGN	Proposal title
observer	Dr Michael Koss	Principal investigator
object	2MASXJ03502377-5018354	Source name
dtcycle	0	&#160
cycle	P	events from which exps? Prim/Second/Both
ra_targ	57.599167	Observer's specified target RA [deg]
dec_targ	-50.309889	Observer's specified target Dec [deg]
ra_nom	57.59459554881	Nominal RA [deg]
dec_nom	-50.307312146331	Nominal Dec [deg]
roll_nom	82.509014438209	Nominal Roll [deg]
revision	1	Processing version of data
ontime	13060.799221516	Sum of GTIs [s]
livetime	12423.47495626	Livetime [s]
ontime7	13060.799221516	Sum of GTIs [s]
l2events	13789	Number of level 2 events



## 2 OBI

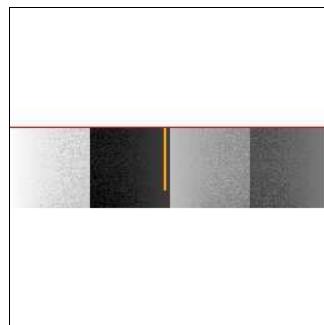
### 2.1 OBI

#### 2.1.1 Images



#### 2.1.2 Bias

Chip 7



### 2.1.3 Parameters

obi_num	0	Obi number	sched_exp_time	13000.000000	[s] Scheduled observation exposure time
ascdsver	10.5.1.1	Processing system revision	ontime	13060.799221516	Sum of GTIs [s]
caldsver	4.7.2	&#160	ontime7	13060.799221516	Sum of GTIs [s]
date	2016-09-04T16:24:54	Date and time of file creation	l1events	28459	Number of level 1 events
revision	1	Processing version of data			

### 2.1.4 Events

	<b>ccd 7</b>
level 1 events	28459
rejected events	14211
rejected %	49%

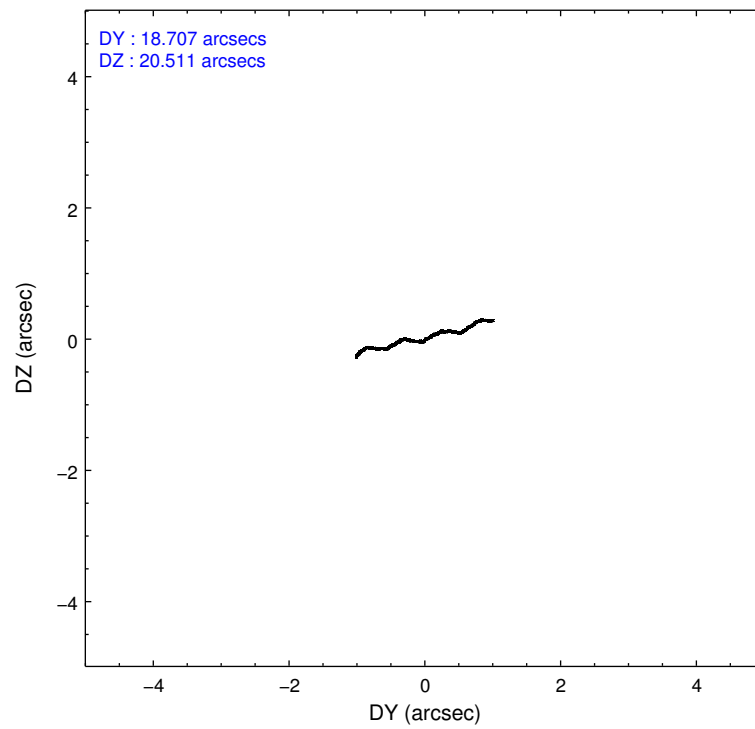
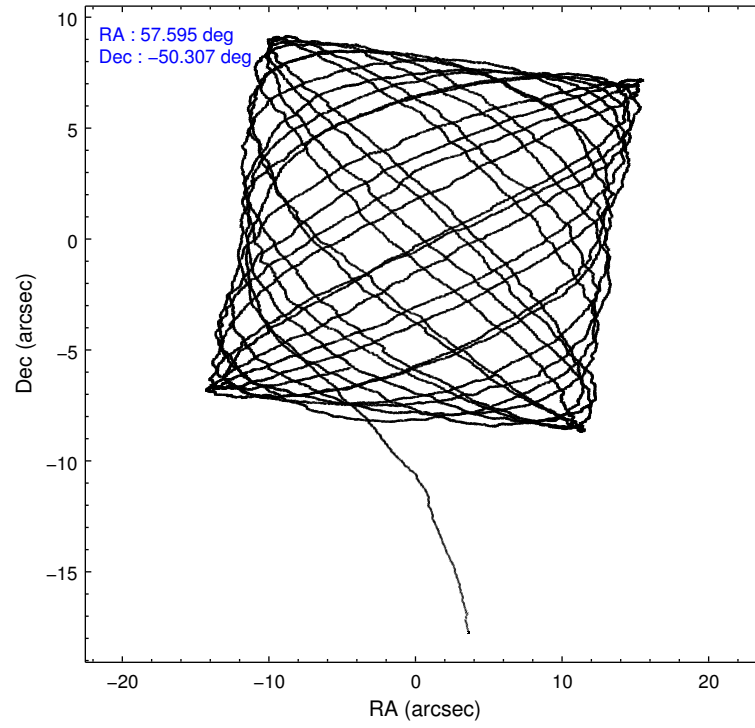
	<b>ccd 7</b>
grade 0 events	1496
	5%
grade 1 events	44
	0%
grade 2 events	2948
	10%
grade 3 events	1593
	5%
grade 4 events	1589
	5%
grade 5 events	2914
	10%
grade 6 events	6622
	23%
grade 7 events	11253
	39%

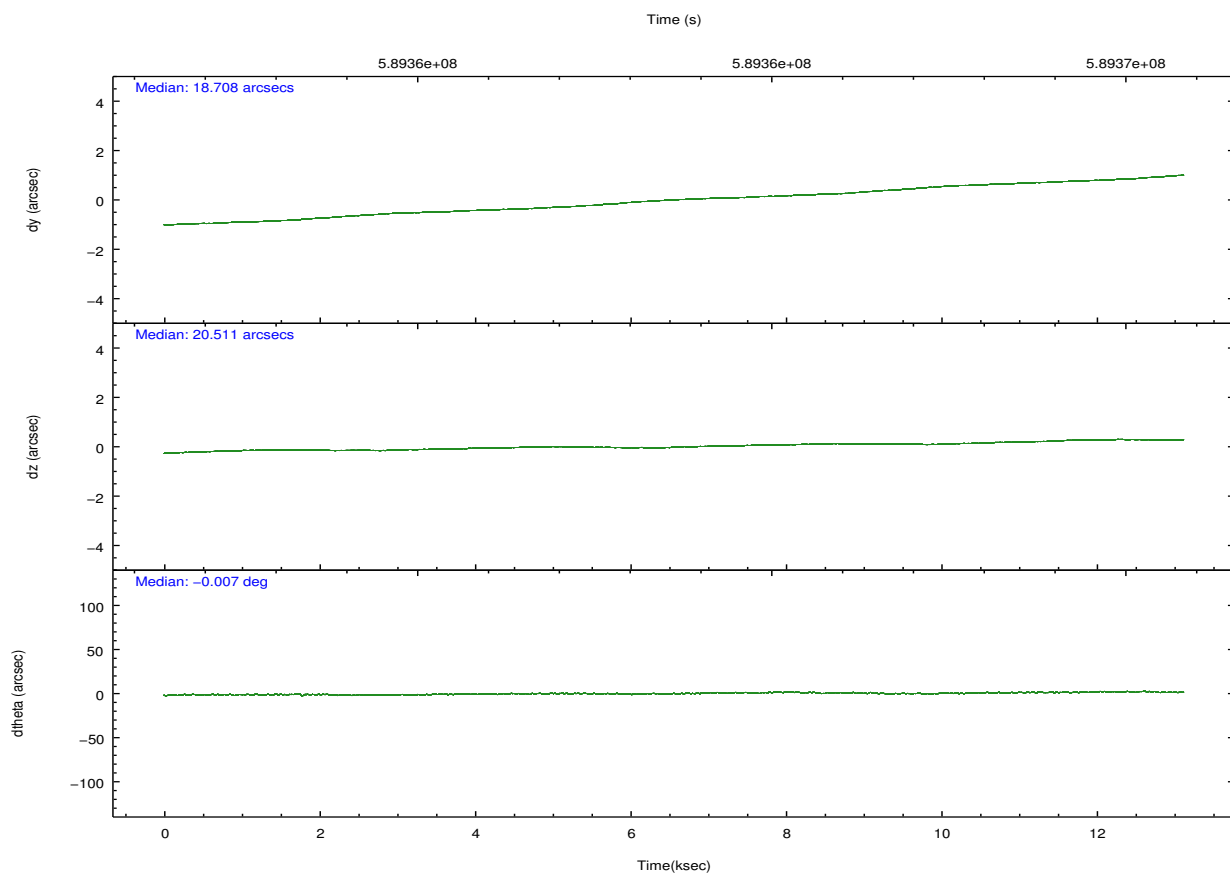
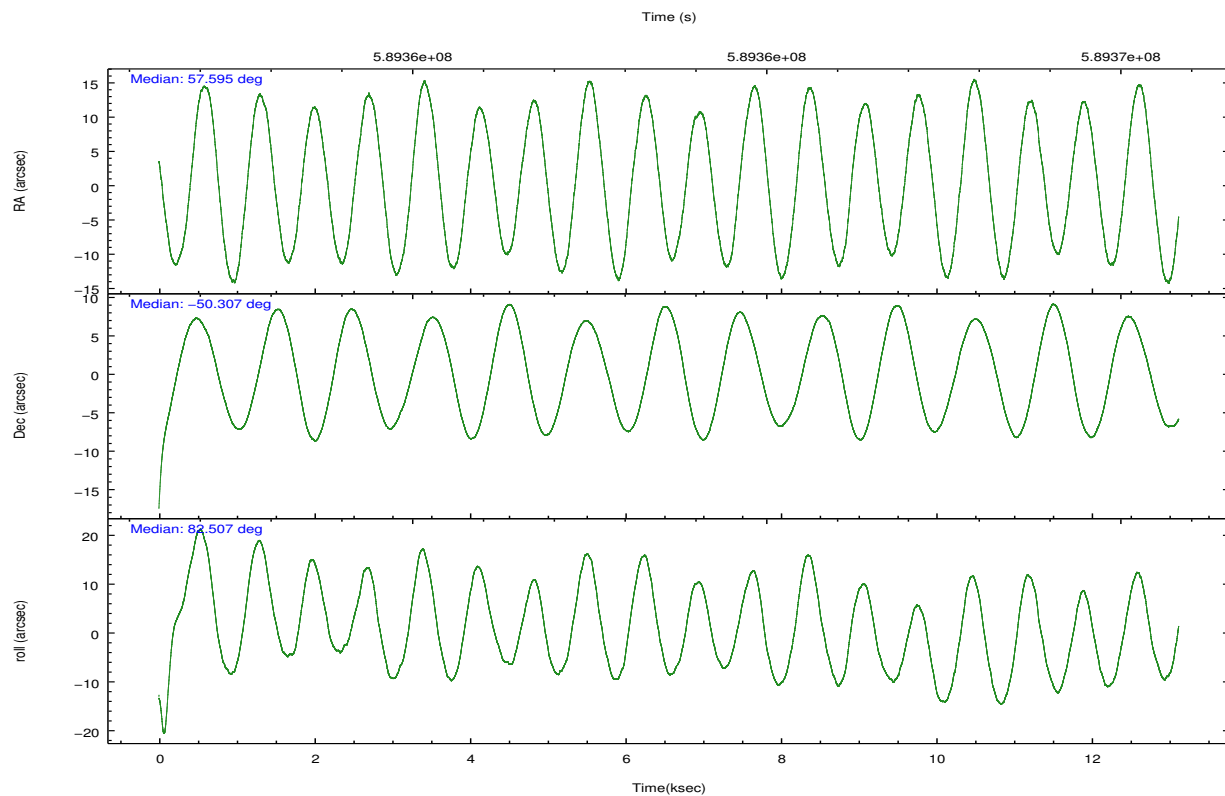


## 2.2 Compared Parameters

Parameter	Planned	Actual	Parameter	Planned	Actual
Instrument	ACIS	ACIS	Obspar format version number	7	7
Detector	ACIS-7	ACIS-7	Obspar file type	PREDICTED	ACTUAL
Grating	NONE	NONE	Obspar update status	NONE	UPDATED
Data mode	FAINT	FAINT	Number of optional ACIS chips dropped	0	0
Observation mode	POINTING	POINTING	On-chip summing requested	N	N
[deg] Pointing RA	57.611642	57.59459554880982	Subarray requested	CUSTOM	1/4
[deg] Pointing Dec	-50.332515	-50.30731214633097	Subarray start row	385	385
[deg] Pointing Roll	82.365511	82.50901443820919	Subarray row count	256	256
[mm] SIM focus pos	-0.684267	-0.6828225247311905	Alternating exposures requested	N	N
[mm] SIM defocus	0	0.001444936568705701	[s] Primary exposure time	0.000000	0.8
[mm] SIM translation stage pos	-190.132523	-190.1425803651734			
[mm] SIM translation stage offset	0	0.01005778216563158			
[s] Observation start time (MET)	589357166.184000	589355483.22148			
Observation start date	2016-09-04T06:18:18	2016-09-04T05:51:23			
[s] Observation end time (MET)	589370166.184000	589371063.73488			
Observation end date	2016-09-04T09:54:58	2016-09-04T10:11:03			
Read mode	TIMED	TIMED			

## 2.3 Aspect



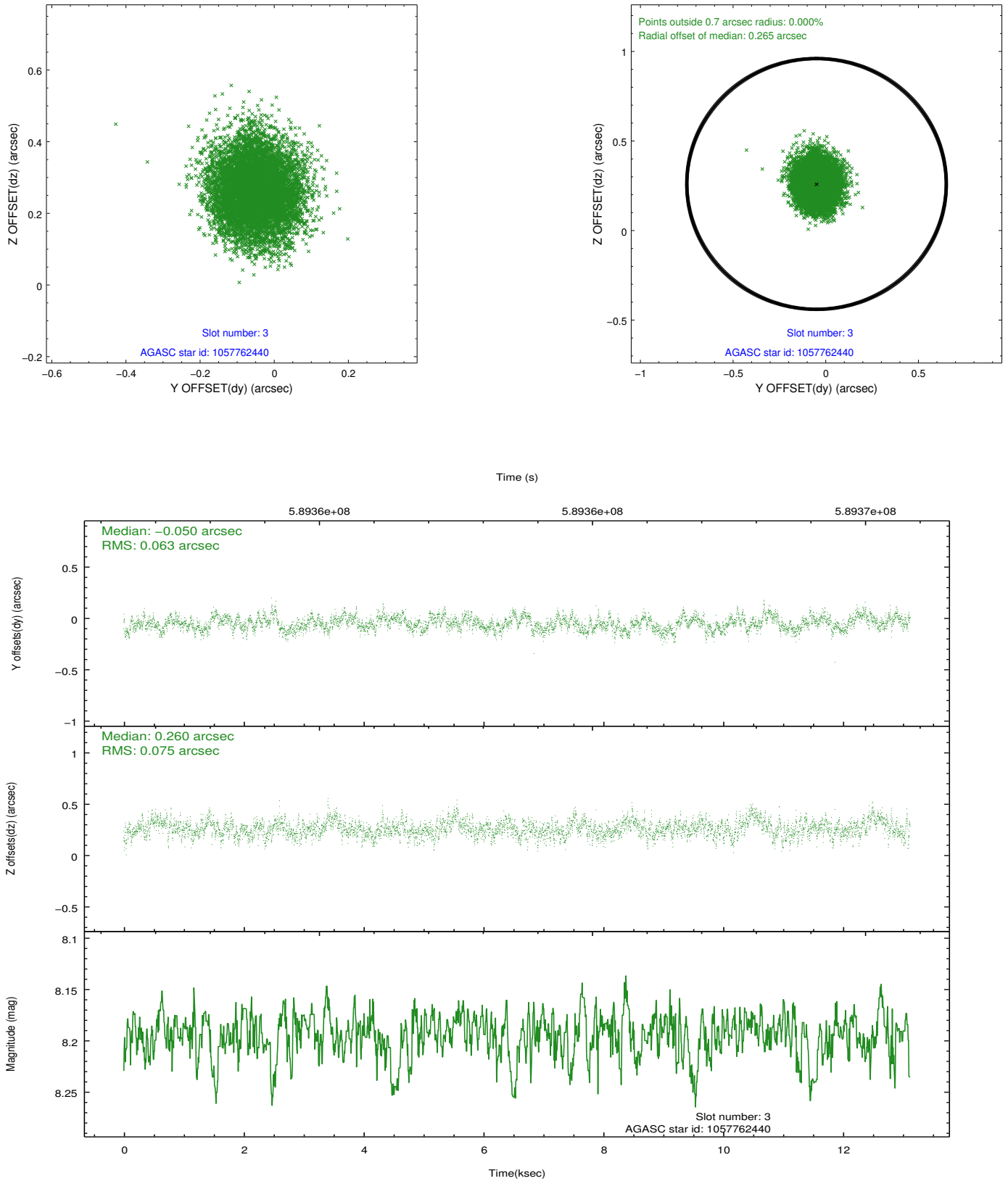


### Slot Statistics

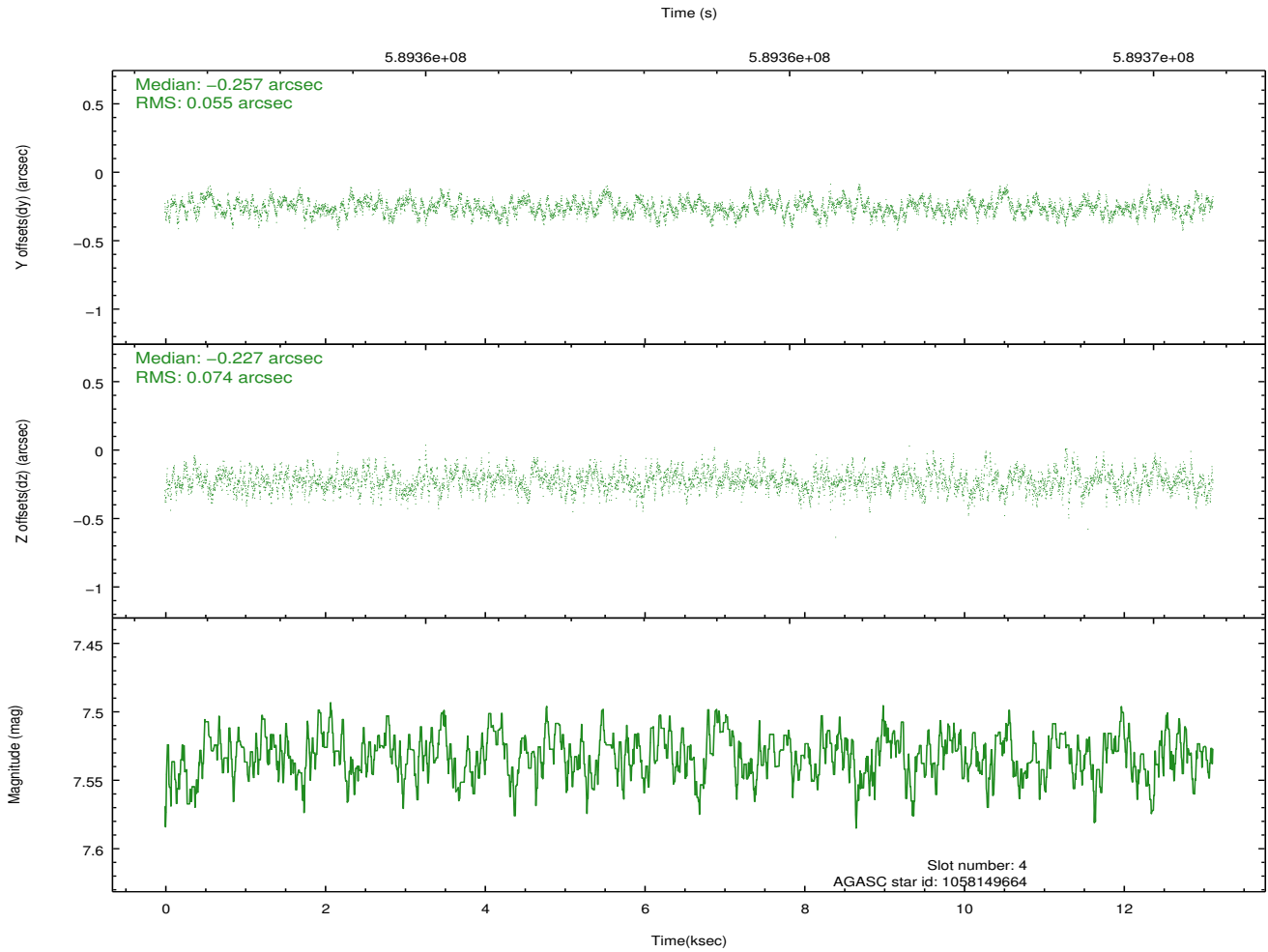
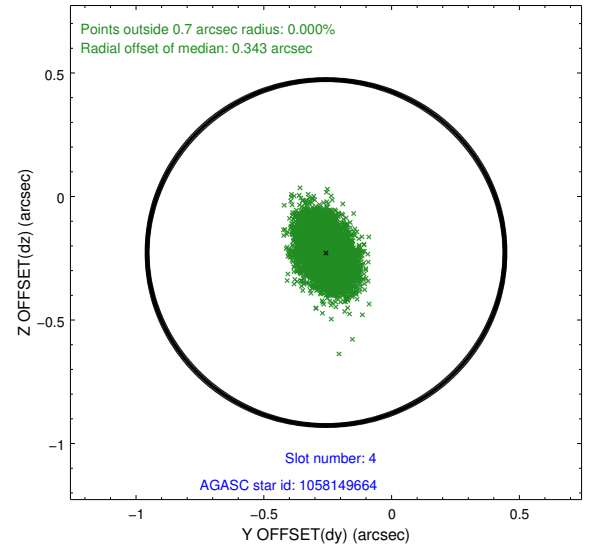
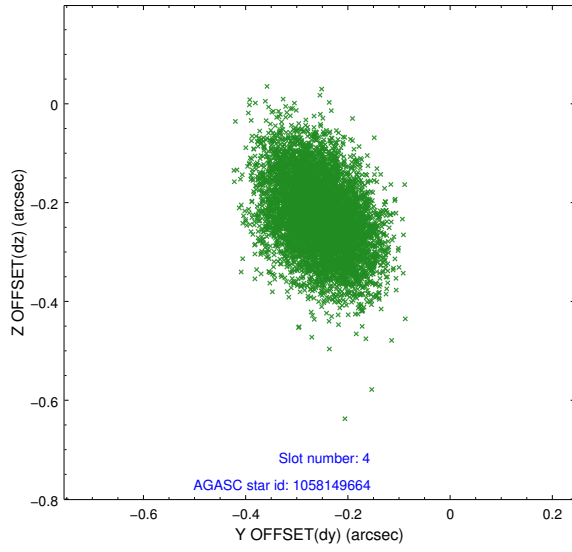
slot	status	used	id	mag	n_pts	med_dy	med_dz	dr1	dr2	ra	dec	mean_y	mean_z
0	FID		ACIS-S-1	7.10	3200	0.033	-0.088	0.017	0.027	0.000000	0.000000	924.37	-1737.70
1	FID		ACIS-S-4	7.11	3201	0.357	0.051	0.018	0.027	0.000000	0.000000	2142.24	166.26
2	FID		ACIS-S-5	7.12	3200	-0.410	0.049	0.012	0.018	0.000000	0.000000	-1824.53	160.12
3	GUIDE	used	1057762440	8.19	6399	-0.050	0.260	0.105	0.169	58.160854	-49.940049	1565.47	-1074.02
4	GUIDE	used	1058149664	7.53	6402	-0.257	-0.227	0.098	0.162	56.864872	-50.064735	718.16	1837.05
5	GUIDE	used	1057757136	8.91	6391	-0.178	-0.278	0.125	0.203	56.690080	-49.928892	1143.55	2308.08
6	GUIDE	used	1058148648	9.27	6395	0.277	0.109	0.199	0.296	56.798035	-50.637214	-1342.82	1693.95
7	GUIDE	used	1058151520	8.85	6398	0.227	0.130	0.164	0.249	57.355501	-50.413020	-365.68	543.88

## 2.4 Star Slots

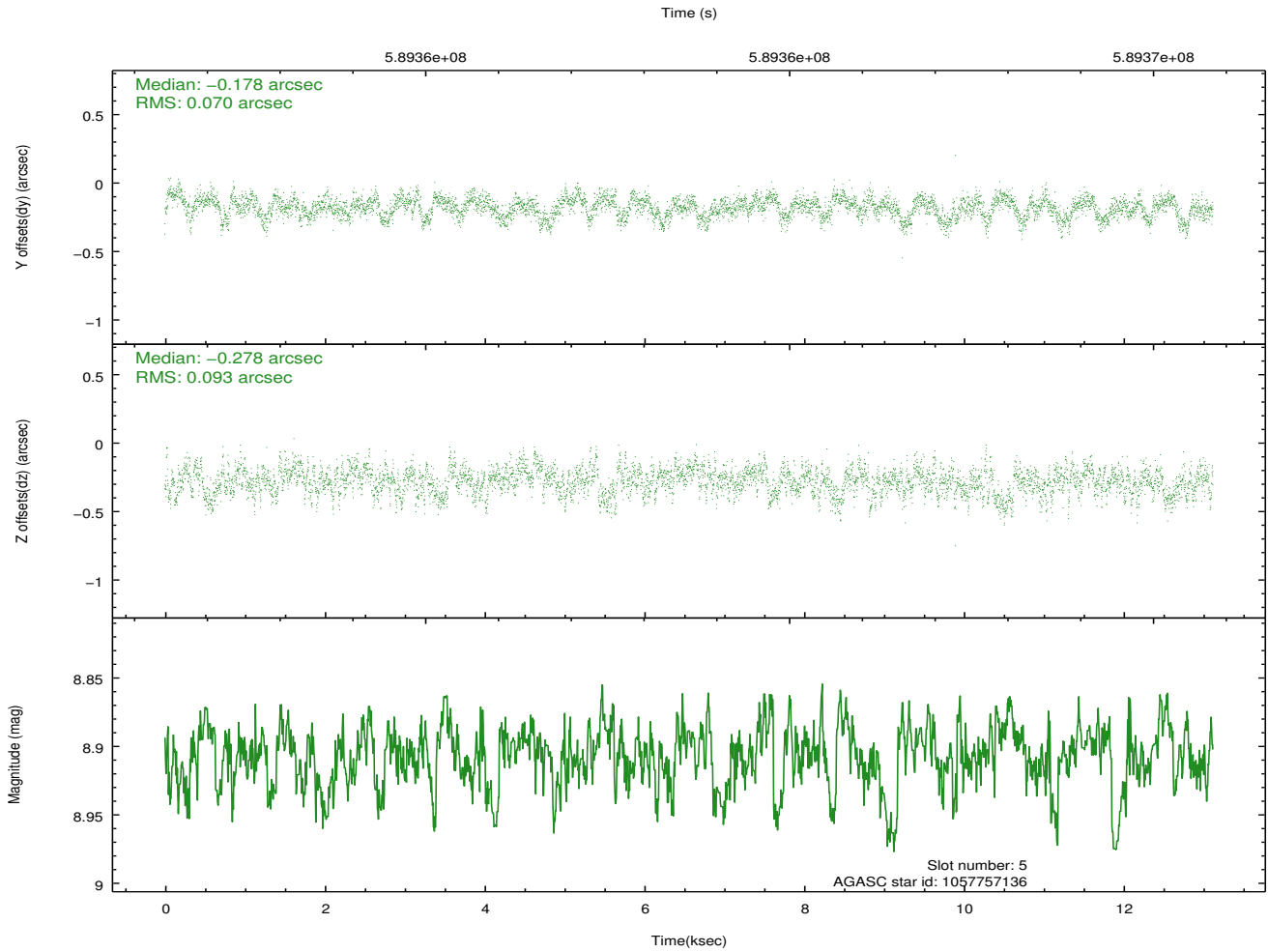
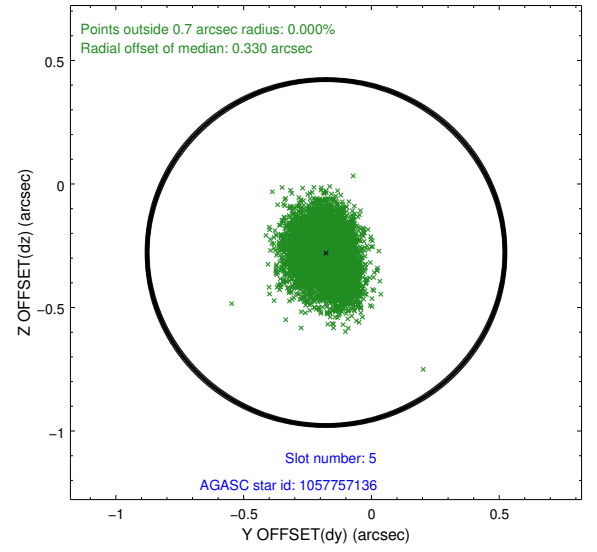
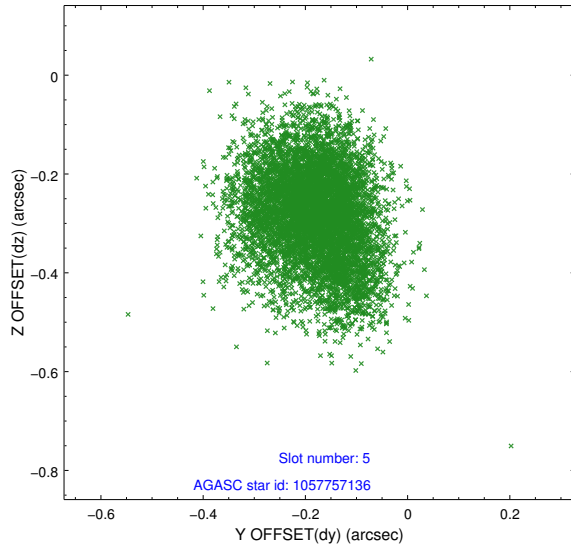
### 2.4.1 Slot 3



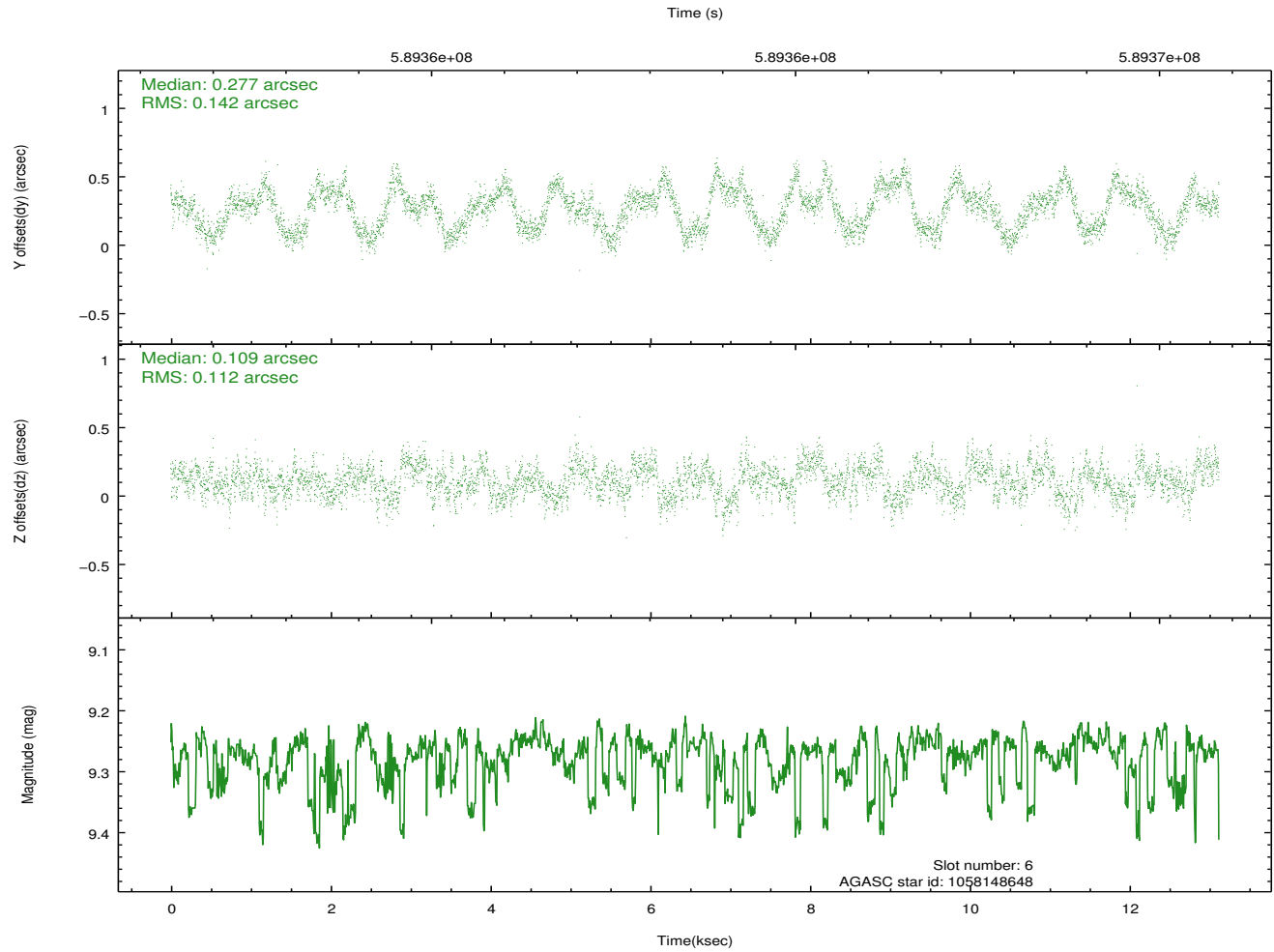
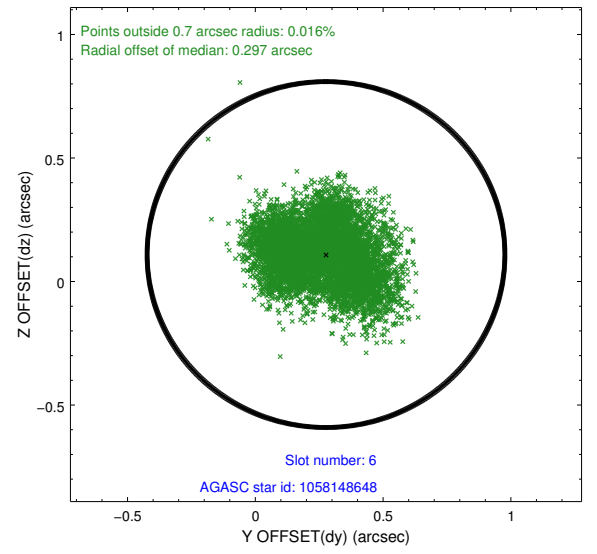
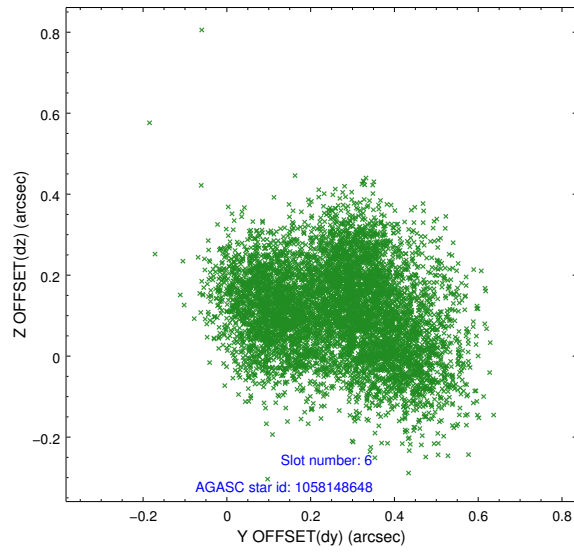
## 2.4.2 Slot 4



### 2.4.3 Slot 5

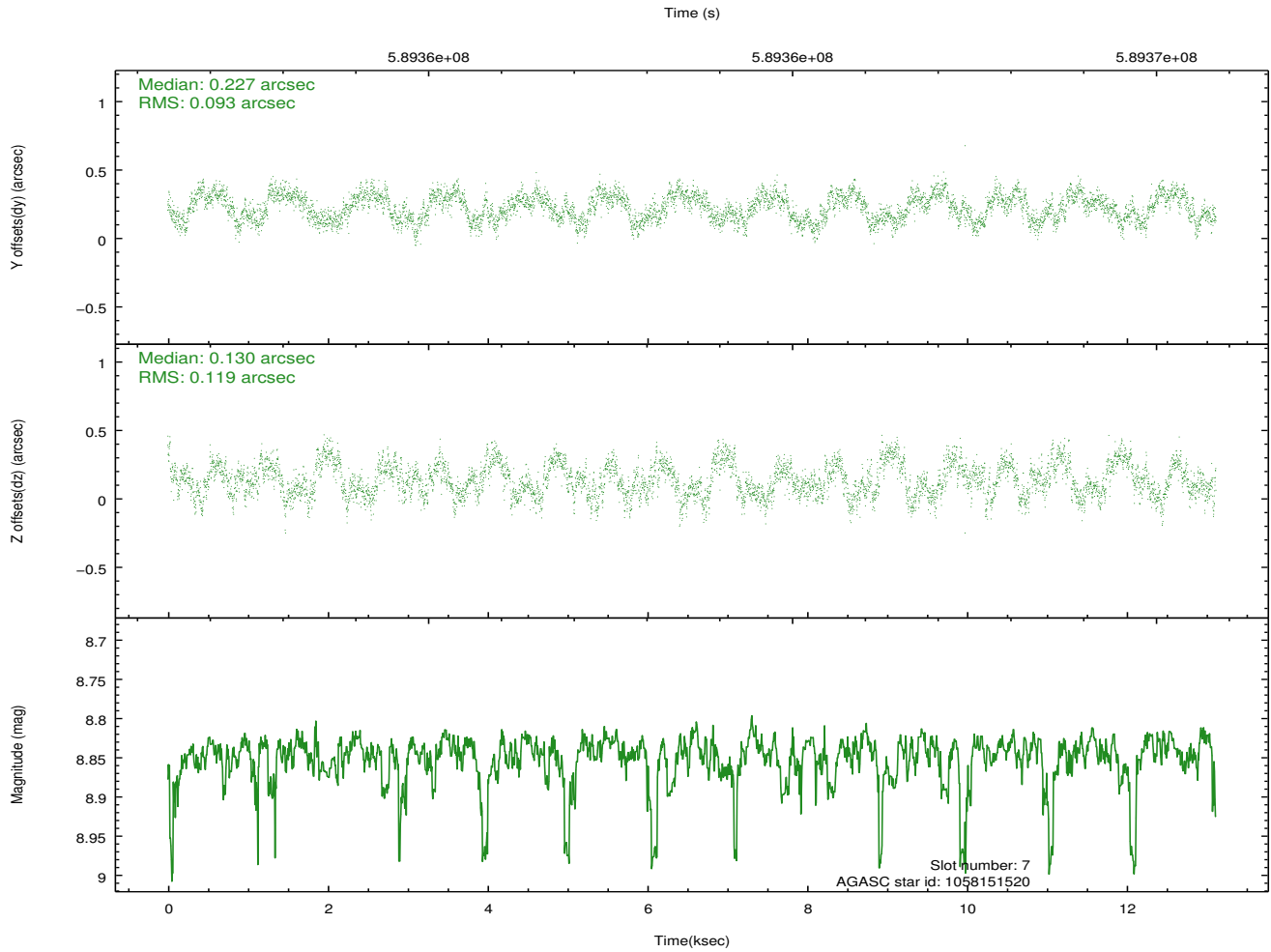
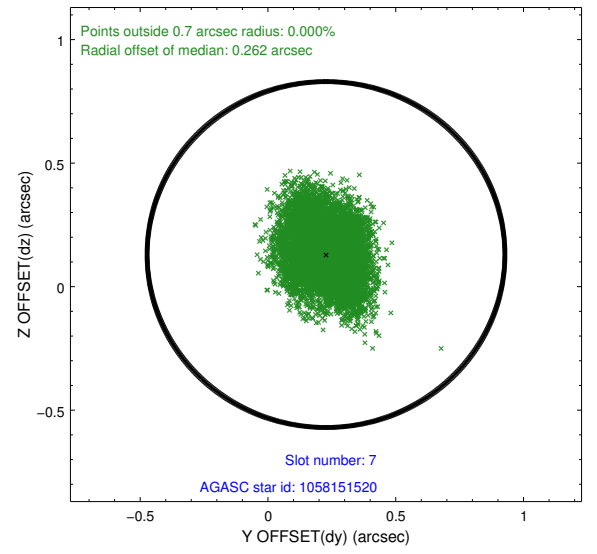
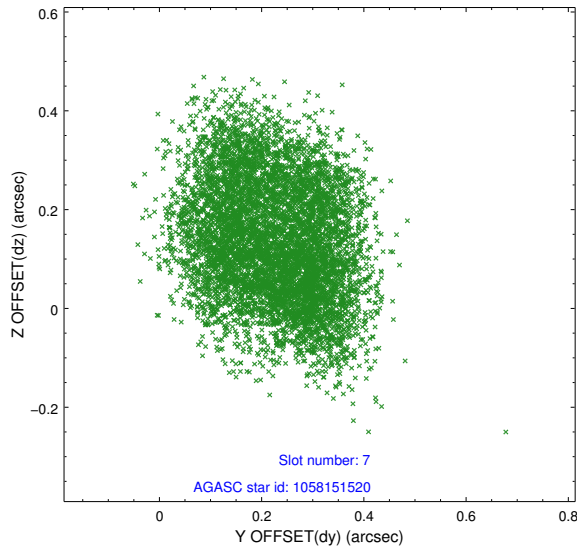


## 2.4.4 Slot 6



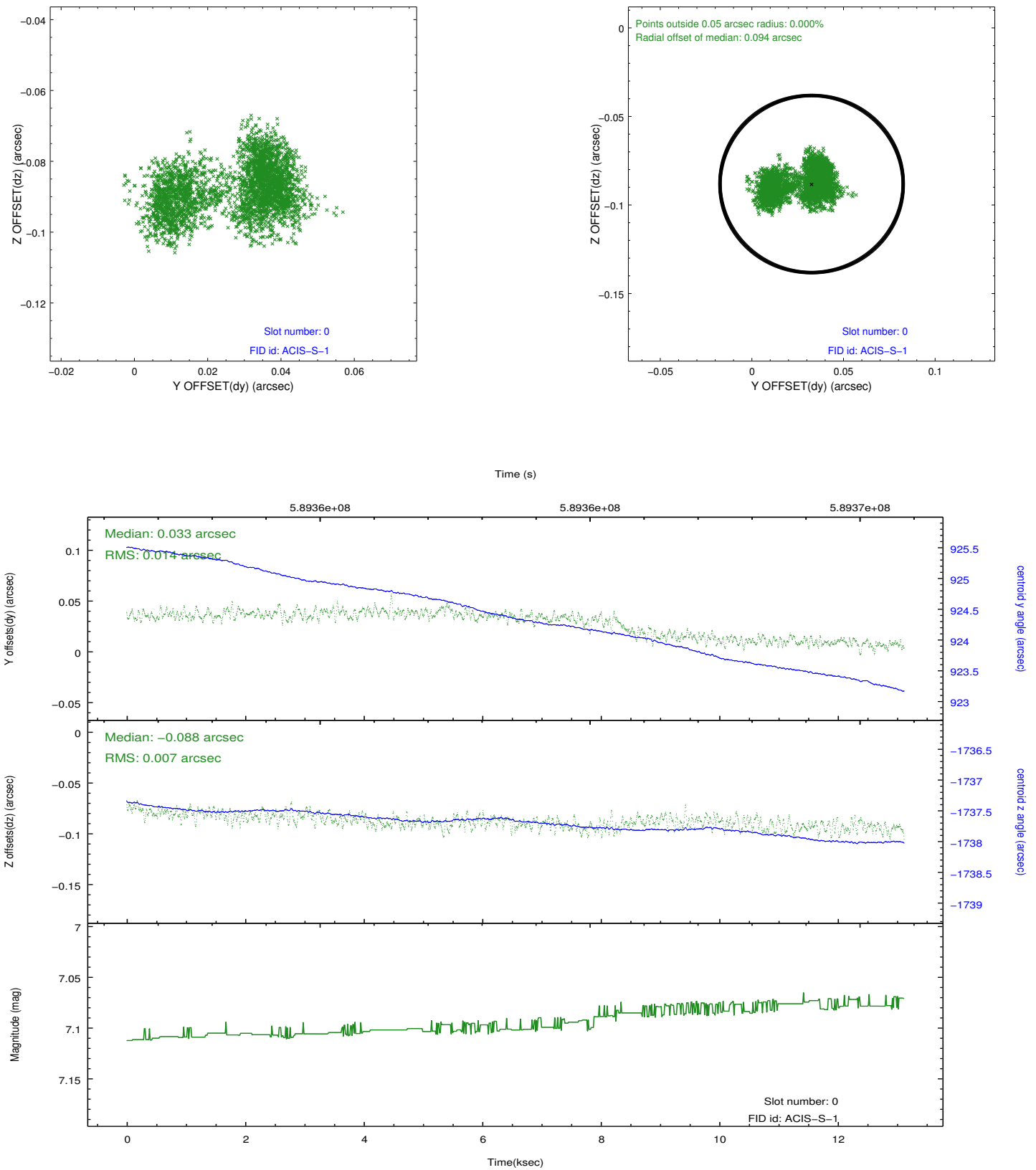


## 2.4.5 Slot 7

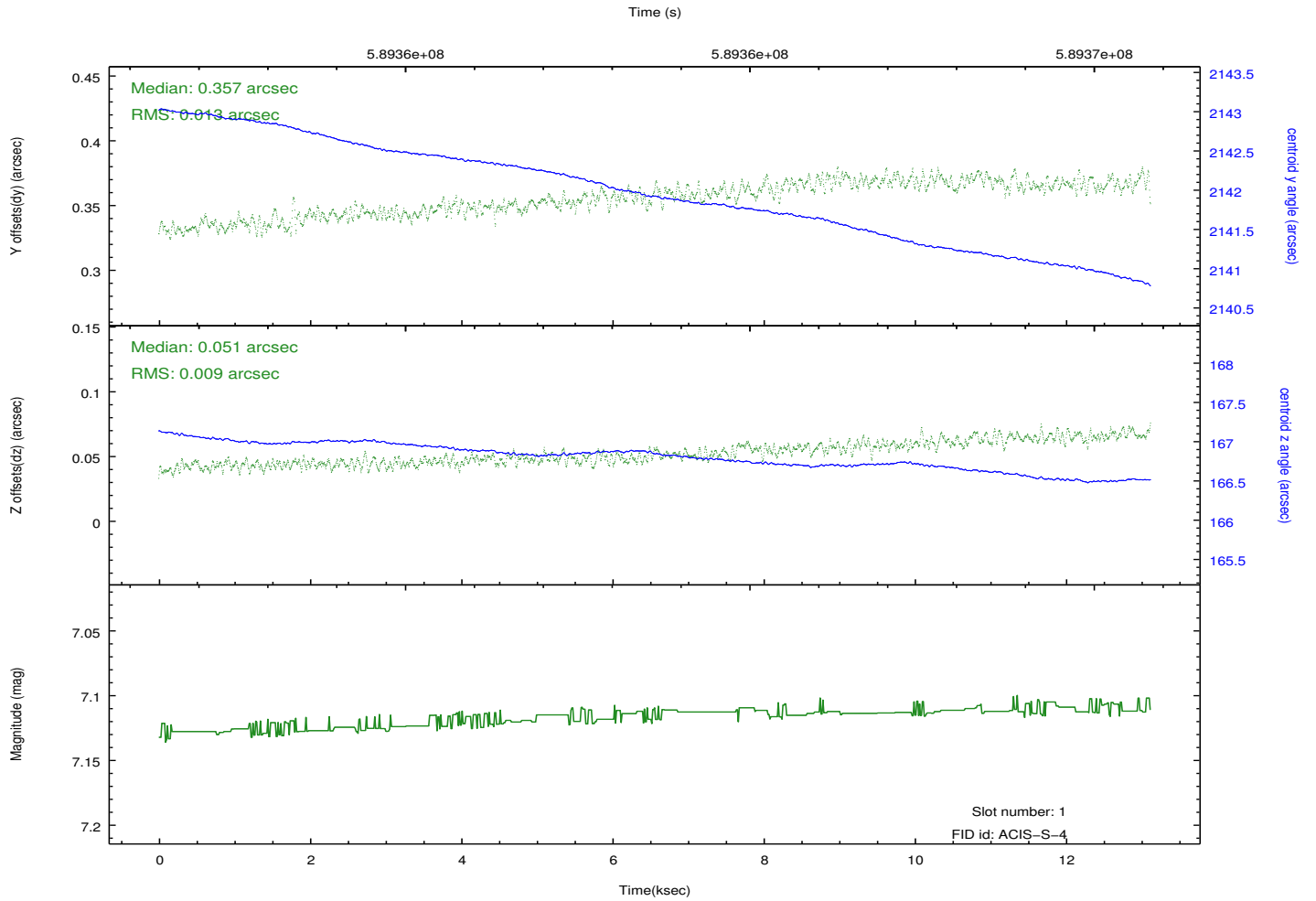
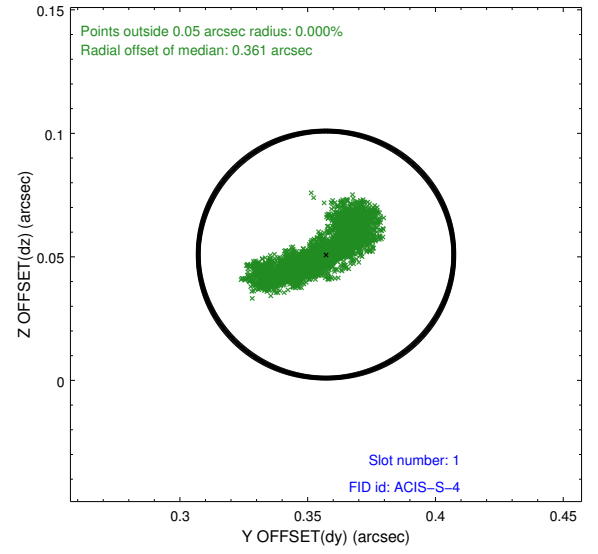
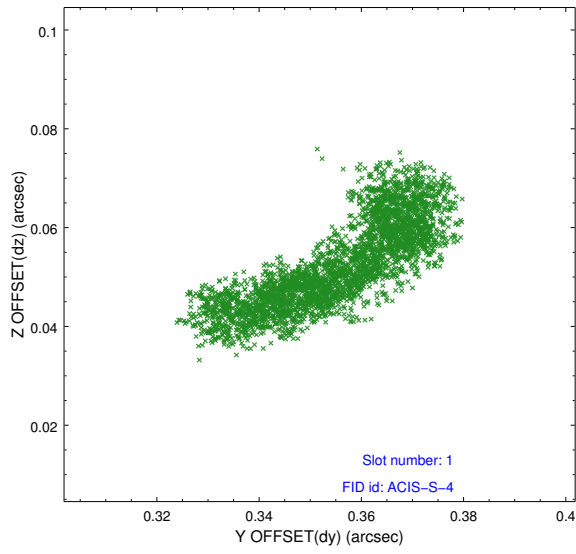


## 2.5 FID Slots

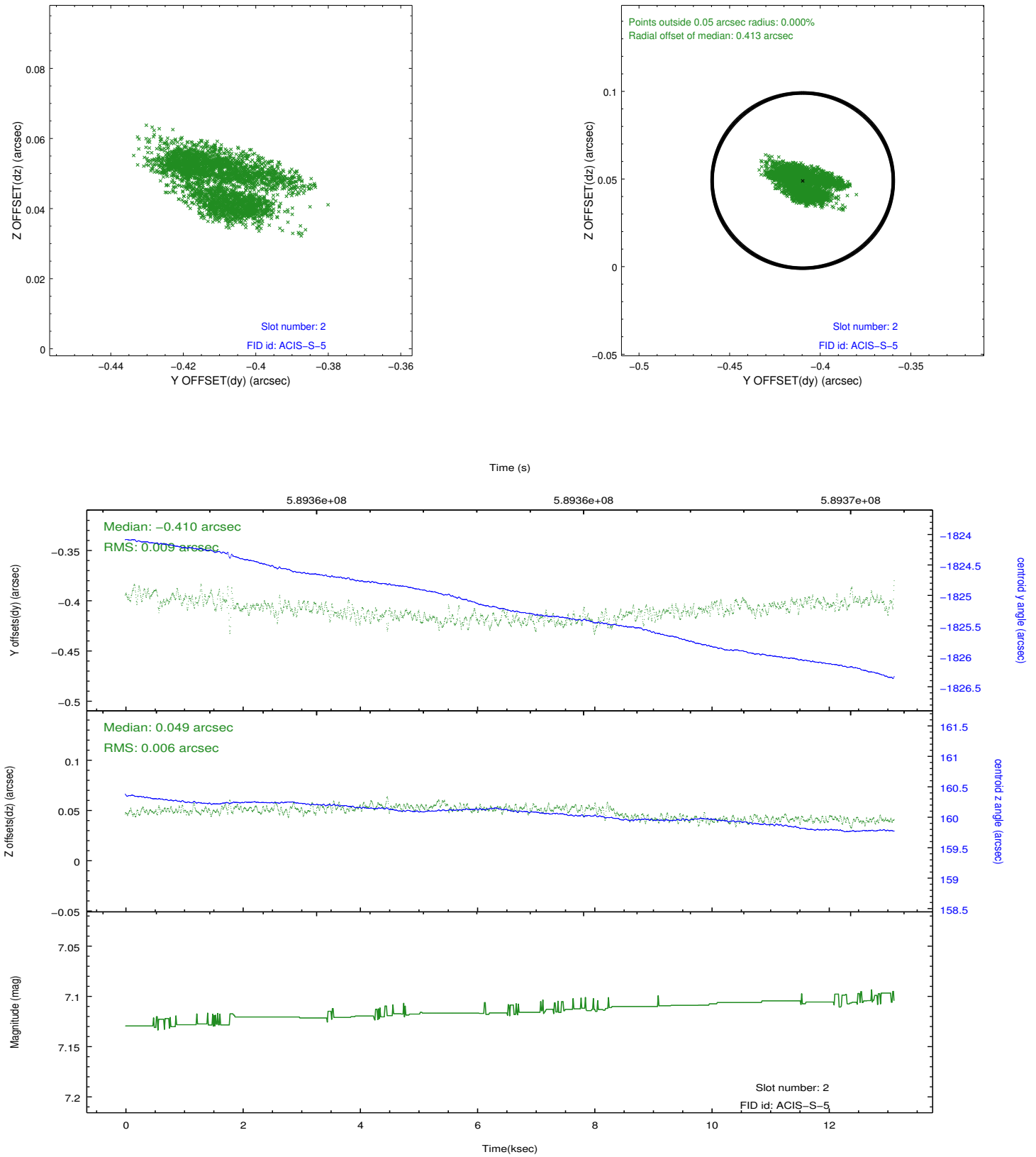
### 2.5.1 Slot 0



## 2.5.2 Slot 1



### 2.5.3 Slot 2



## A Summary

### A.1 Status

V&V Scientist	Beth Sundheim
V&V Date (YYYY-MM-DD)	2016.09.05
V&V Edition	1
V&V Disposition and Status	OK
V&V Charge Time	13.060799221516

### A.2 Comments