

V&V Reference Report

L2 ASCDS Version : 10.4.3

Observation 18153 - L2 Version 1
Chandra X-Ray Center

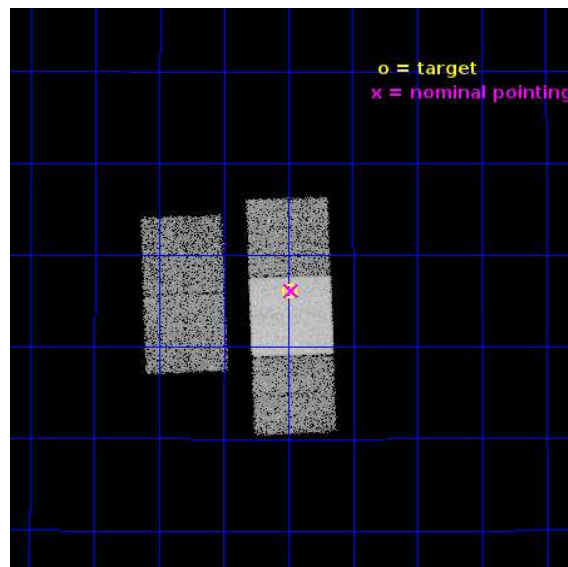
L2 Processing Date : Jan 5 2016

Contents

1	Front	2
2	OBI	3
2.1	OBI	3
2.1.1	Images	3
2.1.2	Bias	3
2.1.3	Parameters	4
2.1.4	Events	4
2.2	Compared Parameters	5
2.3	Aspect	6
2.4	Star Slots	9
2.4.1	Slot 3	9
2.4.2	Slot 4	10
2.4.3	Slot 5	11
2.4.4	Slot 6	12
2.4.5	Slot 7	13
2.5	FID Slots	14
2.5.1	Slot 0	14
2.5.2	Slot 1	15
2.5.3	Slot 2	16
A	Summary	17
A.1	Status	17
A.2	Comments	17

1 Front

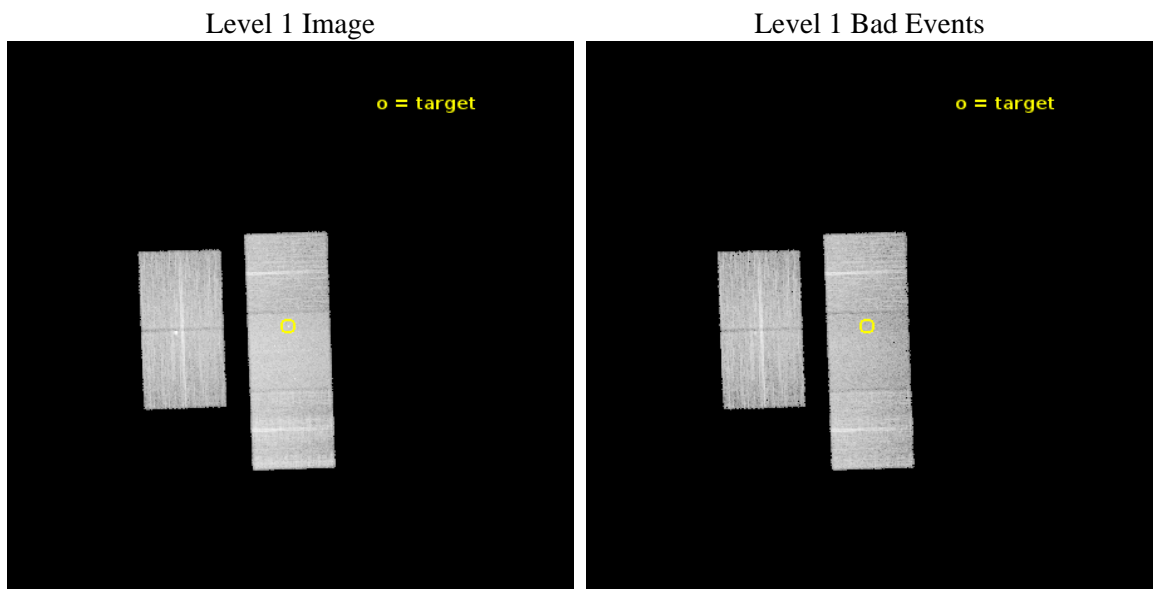
seq_num	703218	Sequence number
obs_id	18153	Observation id
title	Chandra Legacy Survey of Merger Driven AGN Activation in Nearby X-ray Selected AGN	Proposal title
observer	Dr Michael Koss	Principal investigator
object	Zw 121.071	Source name
dtcycle	0	
cycle	P	events from which exps? Prim/Second/Both
ra_targ	140.871667	Observer's specified target RA [deg]
dec_targ	25.768889	Observer's specified target Dec [deg]
ra_nom	140.86901522718	Nominal RA [deg]
dec_nom	25.769127516231	Nominal Dec [deg]
roll_nom	88.007238307815	Nominal Roll [deg]
revision	1	Processing version of data
ontime	15055.657212377	Sum of GTIs [s]
livetime	14858.943967083	Livetime [s]
ontime2	15052.351982117	Sum of GTIs [s]
ontime3	15055.57513237	Sum of GTIs [s]
ontime6	15055.616172433	Sum of GTIs [s]
ontime7	15055.657212377	Sum of GTIs [s]
ontime8	15055.534092426	Sum of GTIs [s]
l2events	82820	Number of level 2 events



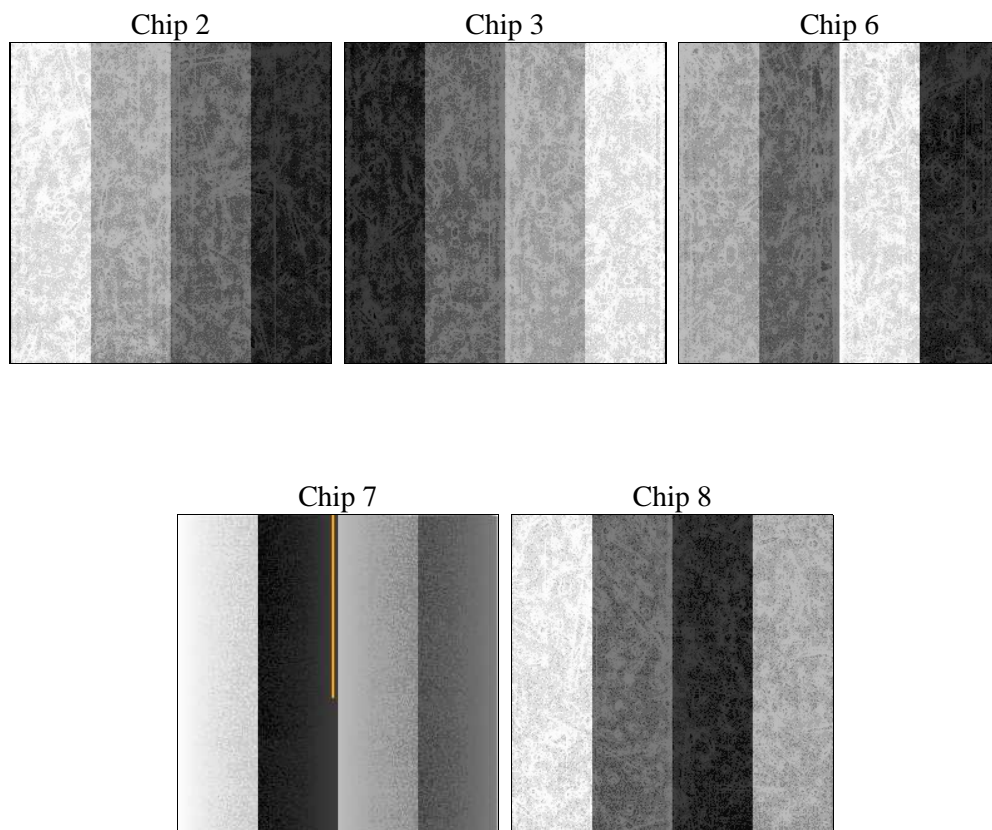
2 OBI

2.1 OBI

2.1.1 Images



2.1.2 Bias



2.1.3 Parameters

obi_num	0	Obi number	sched_exp_time	15000.000000	[s] Scheduled observation exposure time
ascdsver	10.4.3	Processing system revision	ontime	15055.657212377	Sum of GTIs [s]
caldsver	4.7.0	 	ontime2	15052.351982117	Sum of GTIs [s]
date	2016-01-06T00:52:21	Date and time of file creation	ontime3	15055.57513237	Sum of GTIs [s]
revision	1	Processing version of data	ontime6	15055.616172433	Sum of GTIs [s]
			ontime7	15055.657212377	Sum of GTIs [s]
			ontime8	15055.534092426	Sum of GTIs [s]
			l1events	500597	Number of level 1 events

2.1.4 Events

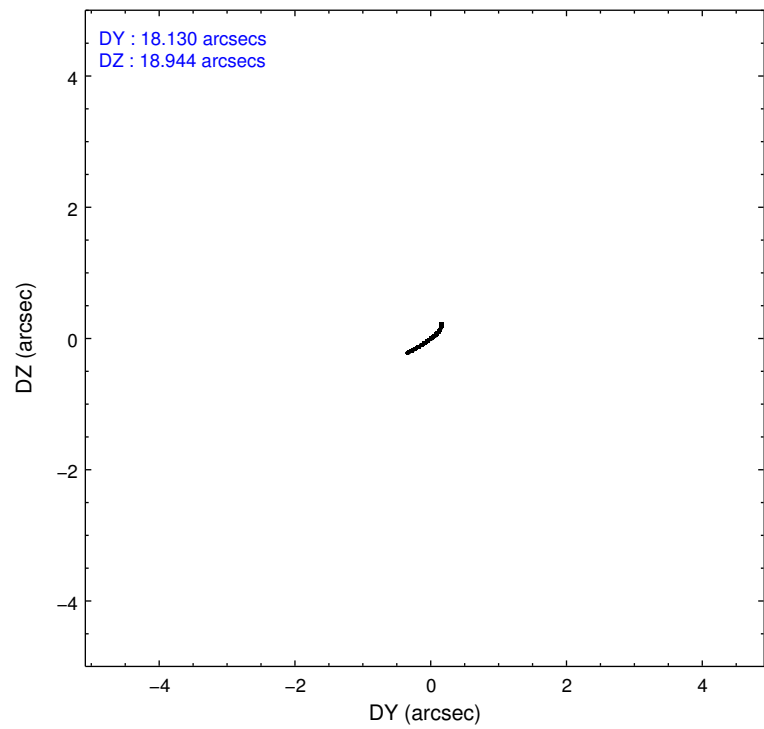
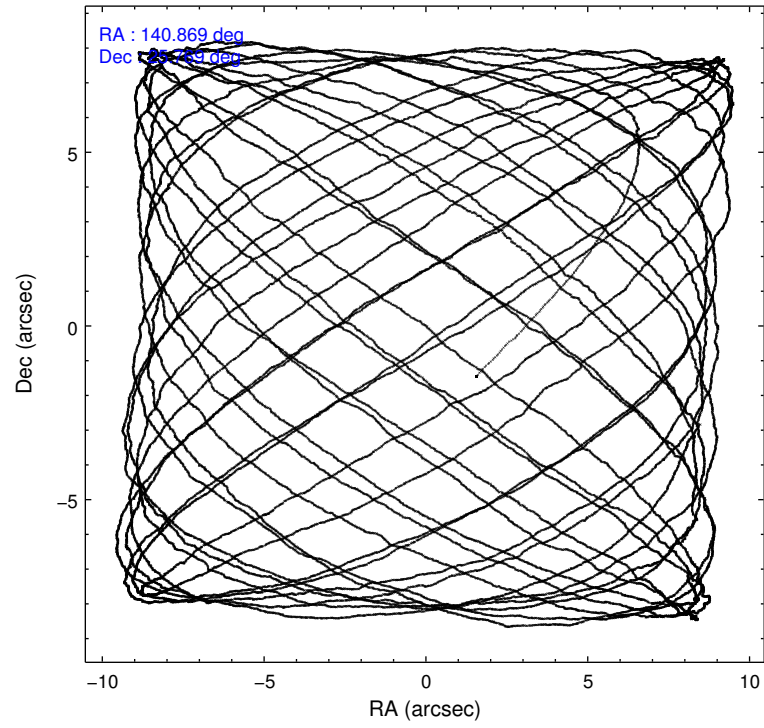
	ccd 2	ccd 3	ccd 6	ccd 7	ccd 8
level 1 events	87214	88369	89801	116723	118490
rejected events	77985	78321	79253	67144	88162
rejected %	89%	88%	88%	57%	74%

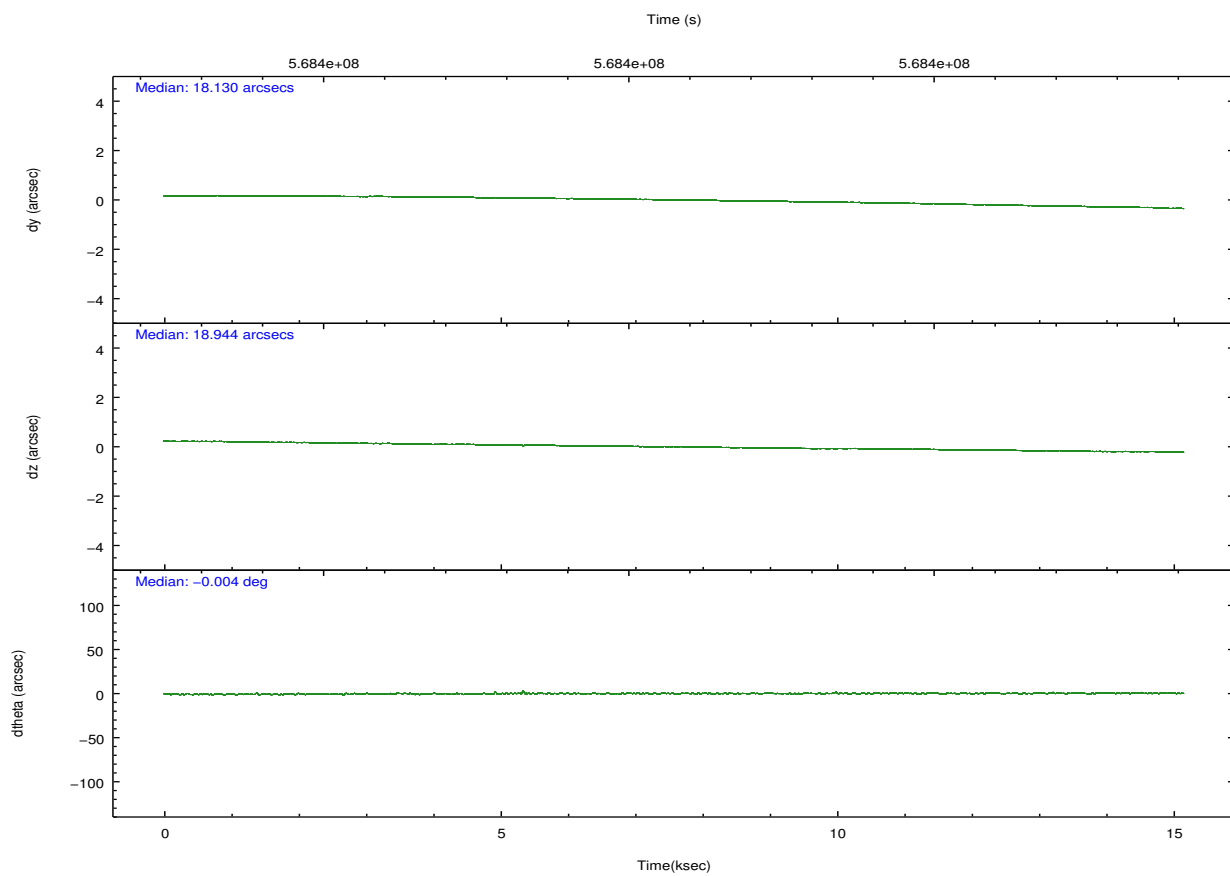
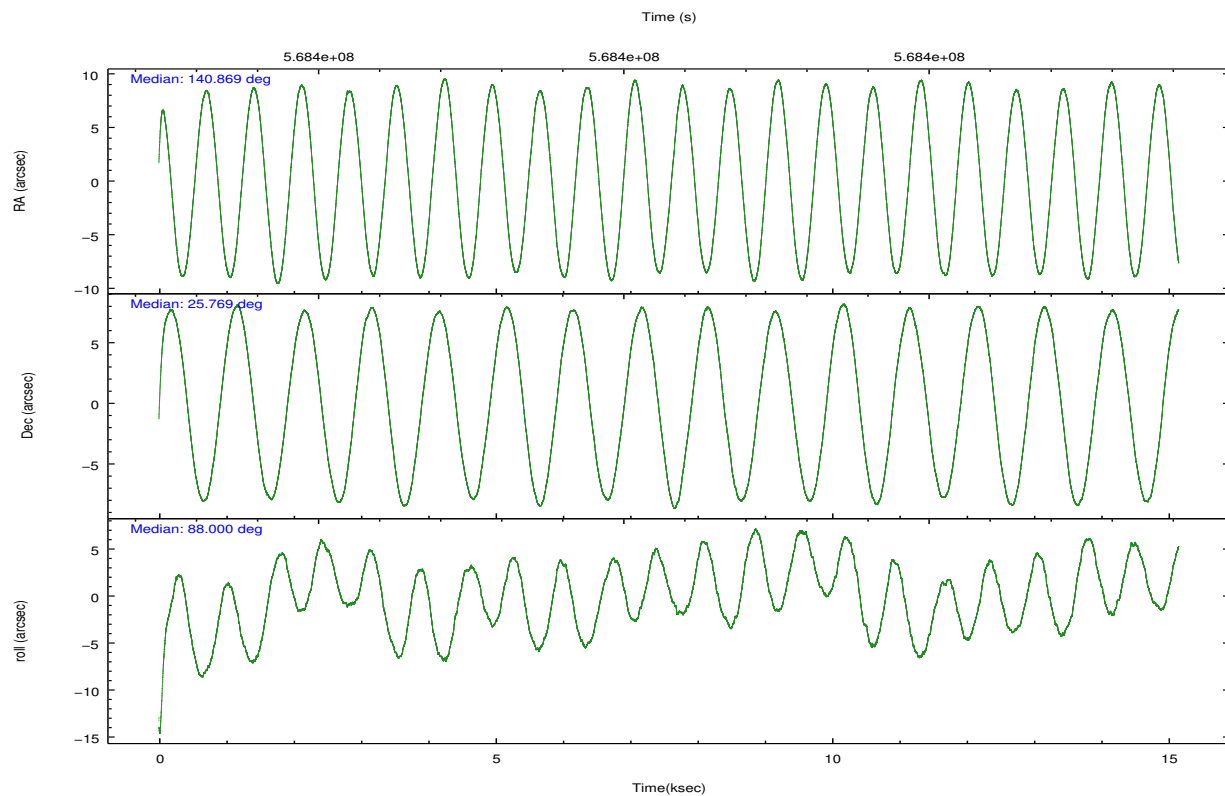
	ccd 2	ccd 3	ccd 6	ccd 7	ccd 8
grade 0 events	3266	3209	3423	4000	8184
	3%	3%	3%	3%	6%
grade 1 events	63	46	46	153	73
	0%	0%	0%	0%	0%
grade 2 events	2155	2723	2432	10436	7613
	2%	3%	2%	8%	6%
grade 3 events	960	1025	995	3961	3171
	1%	1%	1%	3%	2%
grade 4 events	997	1042	1024	3639	2888
	1%	1%	1%	3%	2%
grade 5 events	3615	4420	4389	11318	6365
	4%	5%	4%	9%	5%
grade 6 events	1855	2054	2678	27561	8517
	2%	2%	2%	23%	7%
grade 7 events	74303	73850	74814	55655	81679
	85%	83%	83%	47%	68%

2.2 Compared Parameters

Parameter	Planned	Actual	Parameter	Planned	Actual
Instrument	ACIS	ACIS	Obspar format version number	7	7
Detector	ACIS-23678	ACIS-23678	Obspar file type	PREDICTED	ACTUAL
Grating	NONE	NONE	Obspar update status	NONE	UPDATED
Data mode	FAINT	FAINT	CCD I0 on	N	N
Observation mode	POINTING	POINTING	CCD I1 on	N	N
[deg] Pointing RA	140.883676	140.8690152271807	CCD I2 on	O2	Y
[deg] Pointing Dec	25.745055	25.76912751623061	CCD I3 on	O3	Y
[deg] Pointing Roll	87.844254	88.00723830781547	CCD S0 on	N	N
[mm] SIM focus pos	-0.684267	-0.6828225247311905	CCD S1 on	O1	N
[mm] SIM defocus	0	0.001444936568705701	CCD S2 on	O4	Y
[mm] SIM translation stage pos	-190.132523	-190.1425803651734	CCD S3 on	Y	Y
[mm] SIM translation stage offset	0	0.01005778216563158	CCD S4 on	O5	Y
[s] Observation start time (MET)	568393291.184000	568392266.65	CCD S5 on	N	N
Observation start date	2016-01-05T15:00:23	2016-01-05T14:44:26	Number of optional ACIS chips dropped	1	1
[s] Observation end time (MET)	568408291.184000	568408982.35094	On-chip summing requested	N	N
Observation end date	2016-01-05T19:10:23	2016-01-05T19:23:02	Subarray requested	NONE	NONE
Read mode	TIMED	TIMED	Alternating exposures requested	N	N
			[s] Primary exposure time	0.000000	3.1

2.3 Aspect



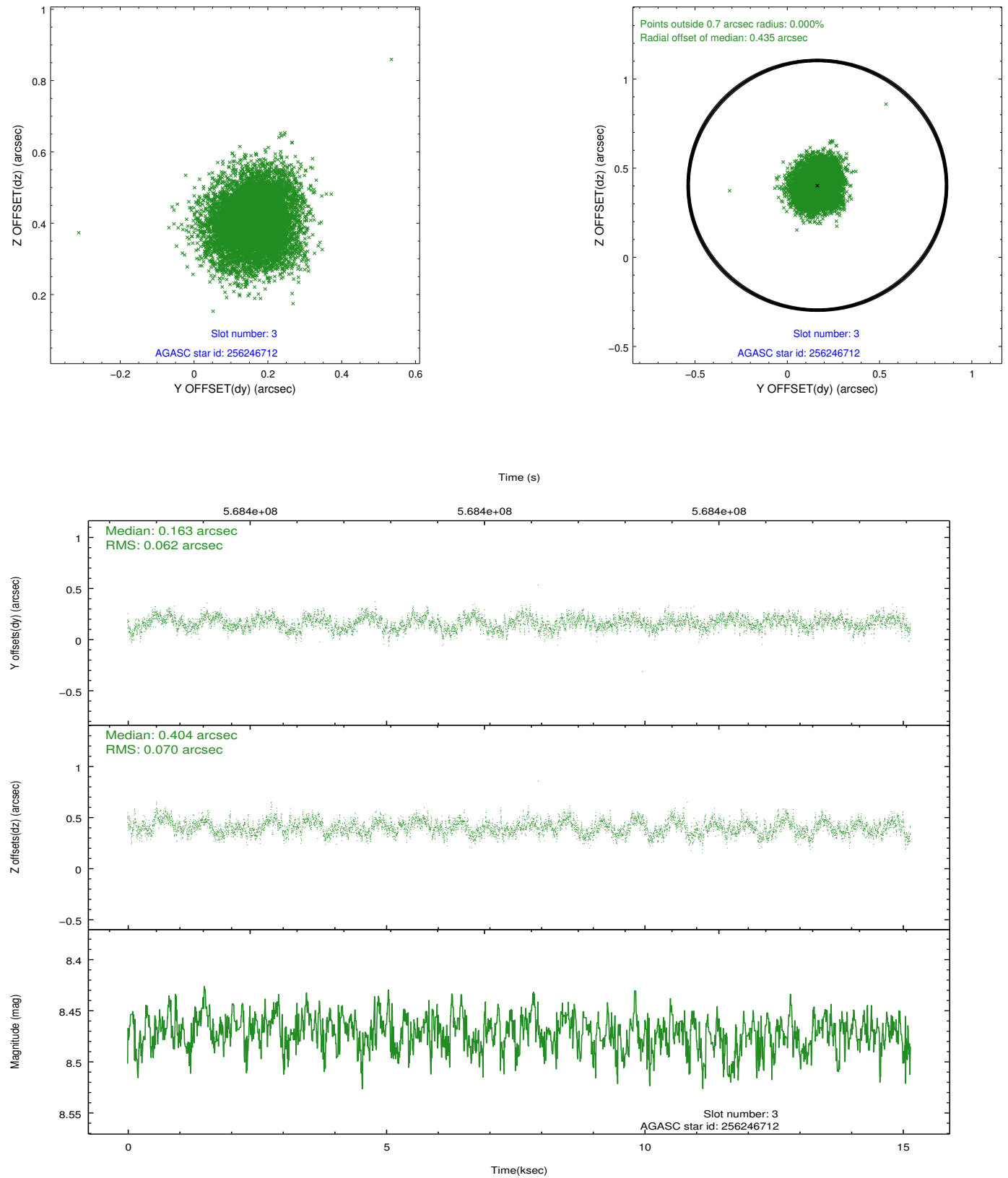


Slot Statistics

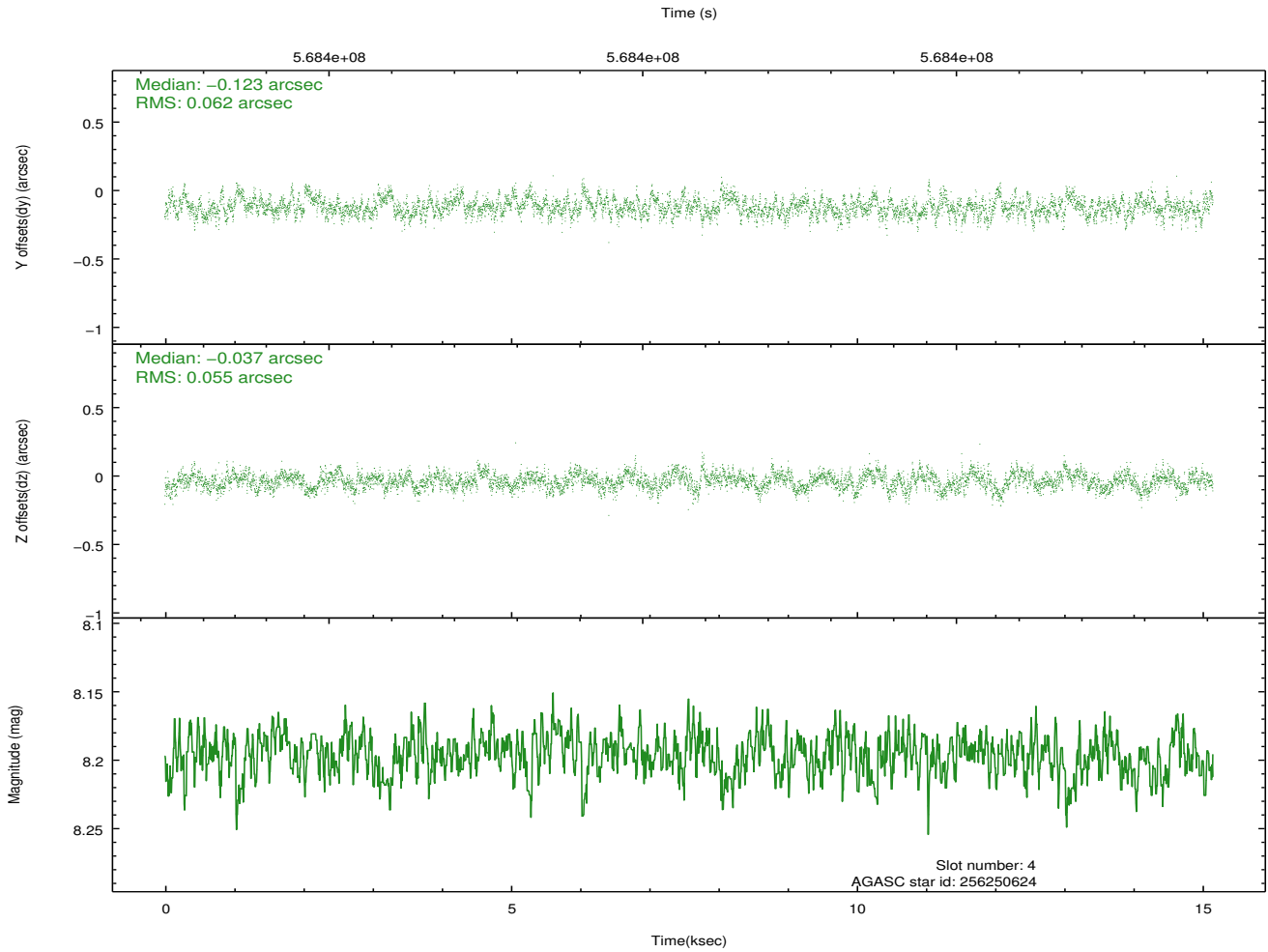
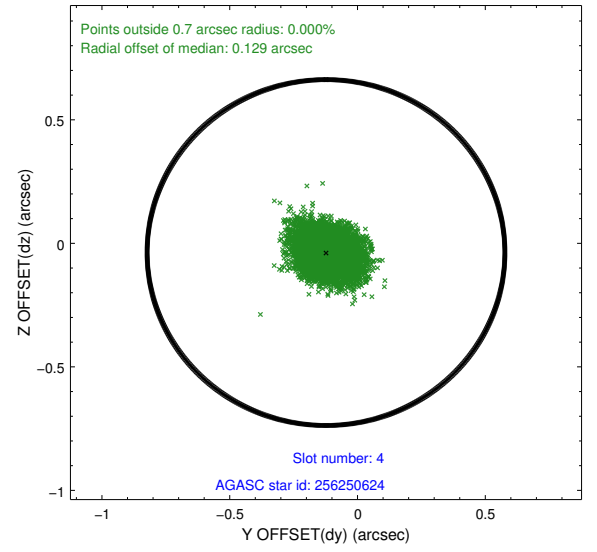
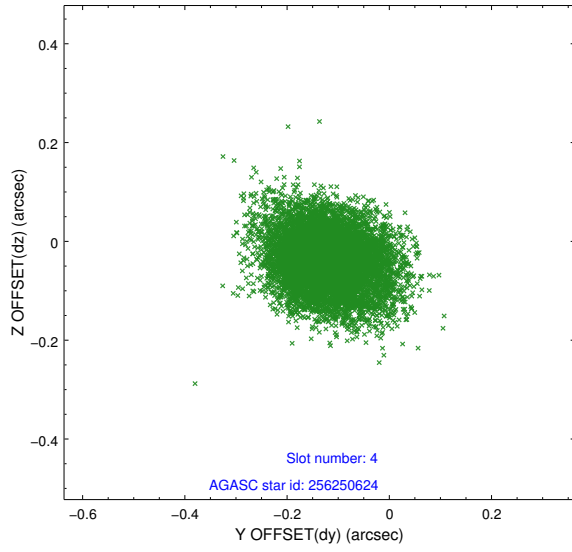
slot	status	used	id	mag	n_pts	med_dy	med_dz	dr1	dr2	ra	dec	mean_y	mean_z
0	FID		ACIS-S-2	7.13	3695	-0.169	-0.138	0.008	0.013	0.000000	0.000000	-771.32	-1740.52
1	FID		ACIS-S-4	7.23	3696	0.442	0.118	0.006	0.011	0.000000	0.000000	2142.42	167.92
2	FID		ACIS-S-5	7.24	3695	-0.304	0.028	0.008	0.012	0.000000	0.000000	-1823.92	161.82
3	GUIDE	used	256246712	8.47	7392	0.163	0.404	0.100	0.157	141.544163	25.575733	-523.08	-2165.03
4	GUIDE	used	256250624	8.20	7391	-0.123	-0.037	0.088	0.144	141.450106	26.204610	1726.38	-1765.49
5	GUIDE	used	256253976	9.24	7390	-0.132	-0.057	0.127	0.207	141.284458	26.262960	1913.90	-1223.43
6	GUIDE	used	256256256	7.37	7393	0.040	-0.150	0.091	0.153	140.294172	25.163221	-2163.20	1839.60
7	GUIDE	used	256256648	8.57	7390	0.044	-0.166	0.092	0.152	140.363498	25.358984	-1449.51	1639.04

2.4 Star Slots

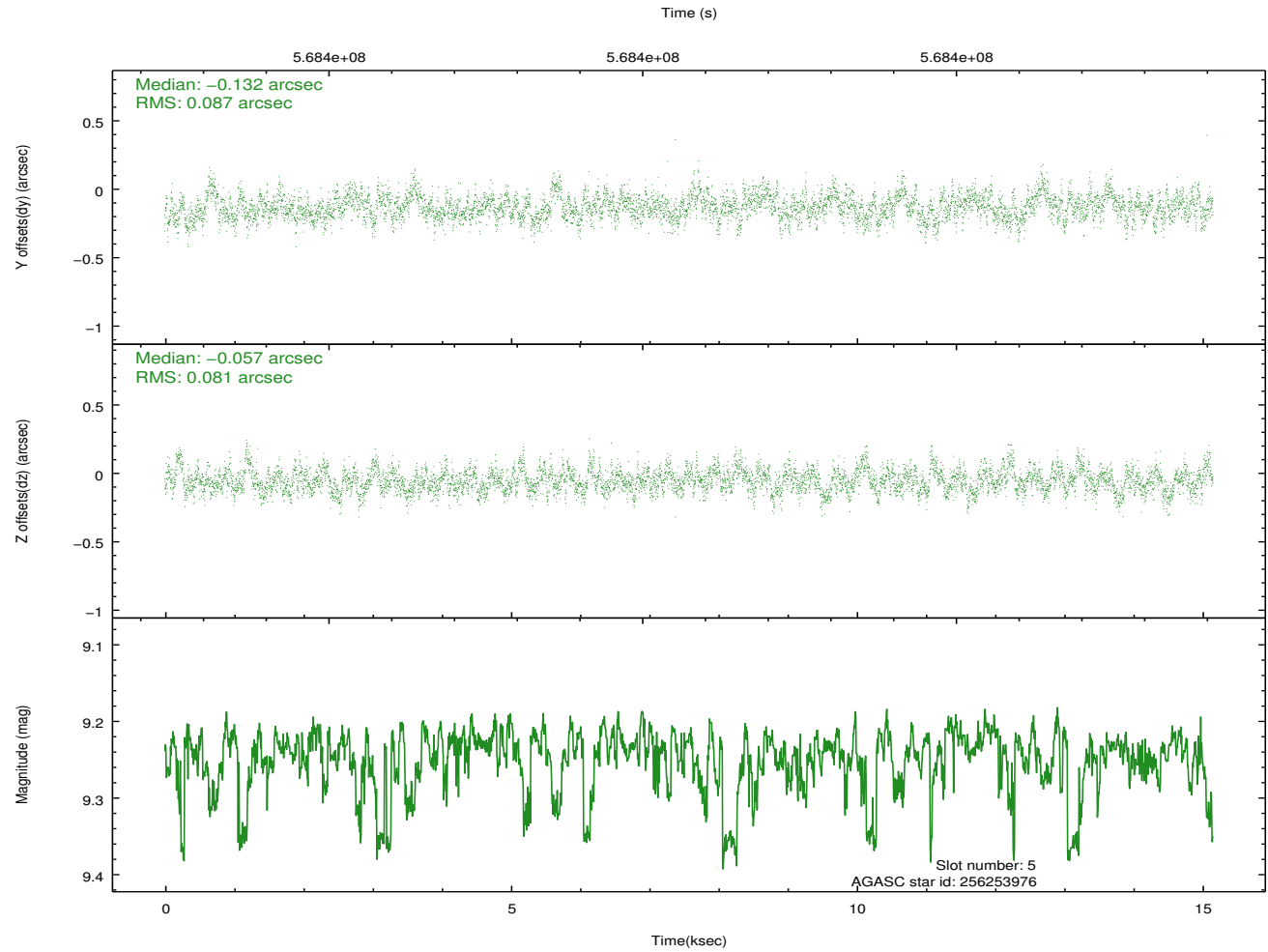
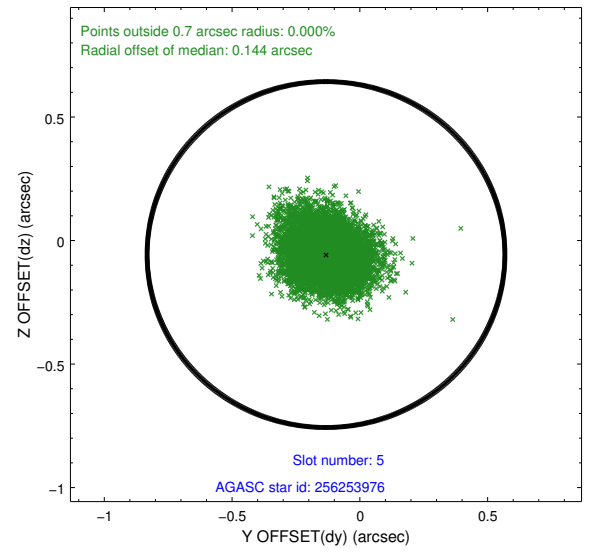
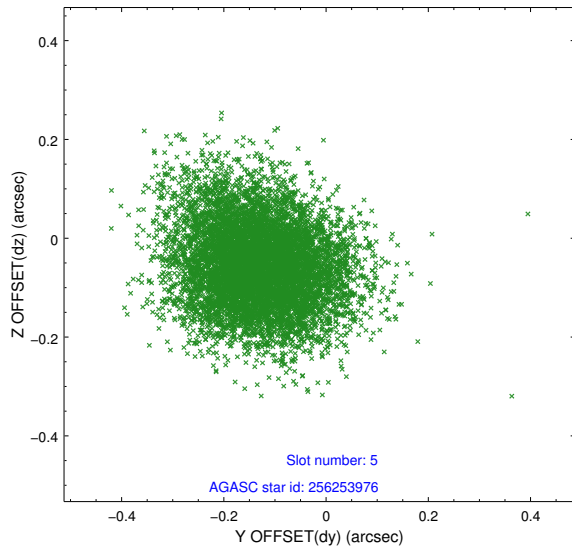
2.4.1 Slot 3



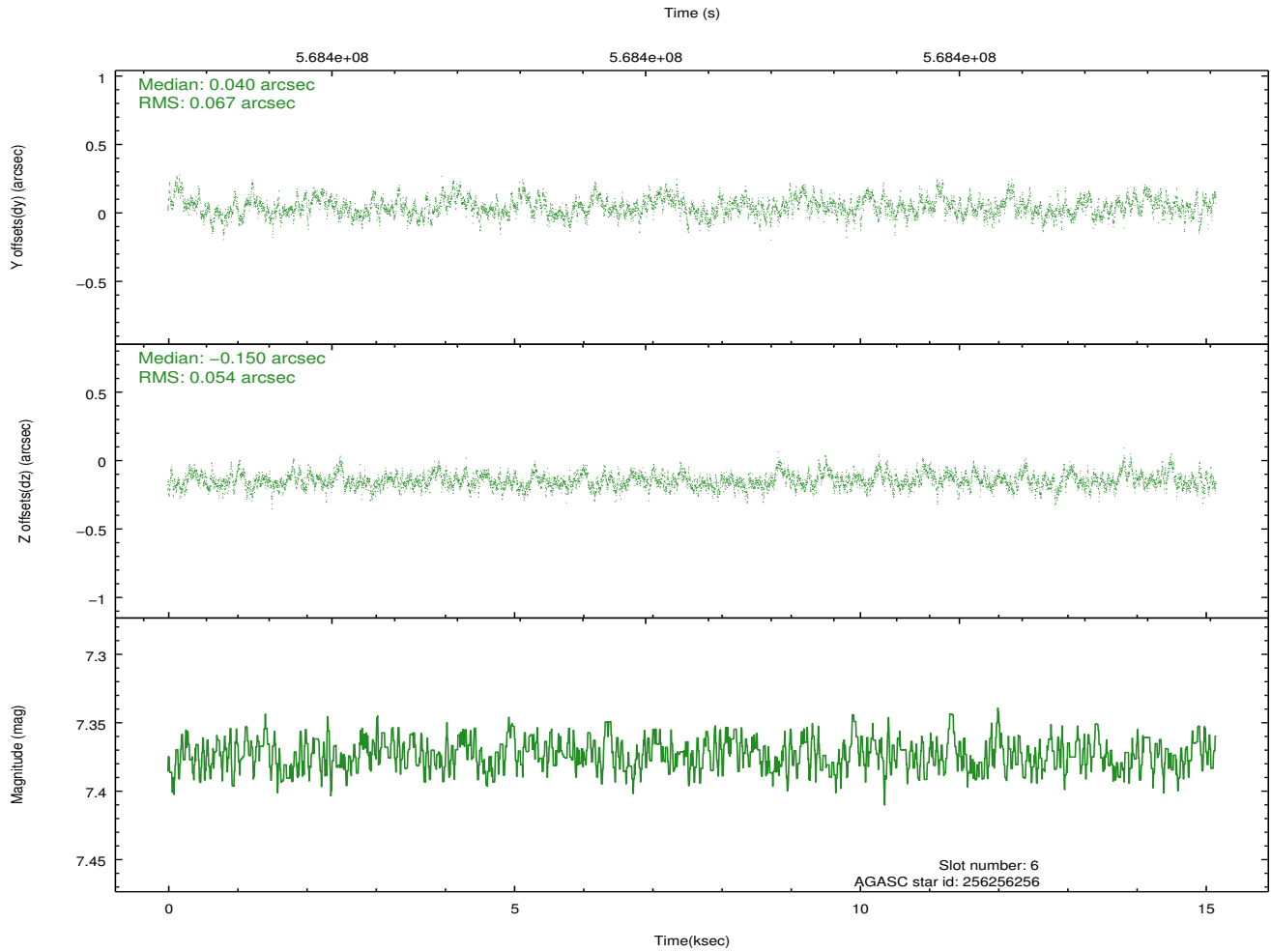
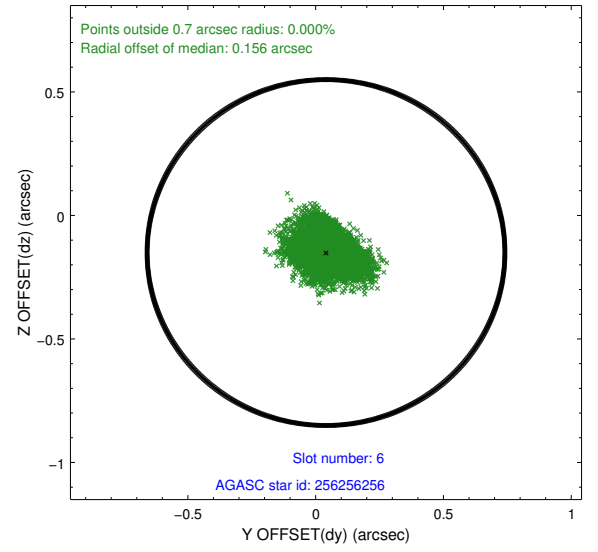
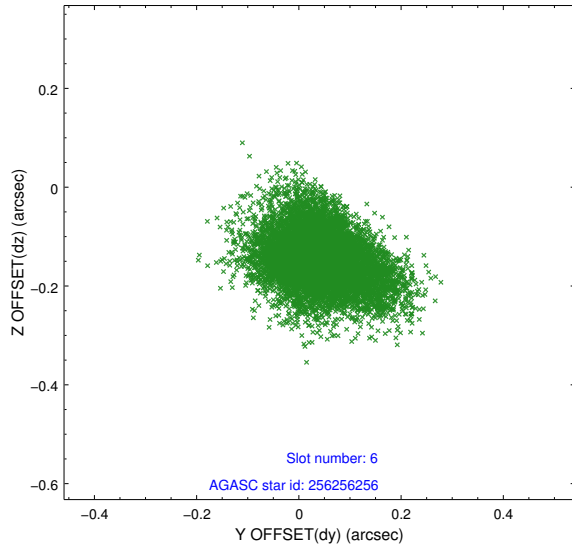
2.4.2 Slot 4



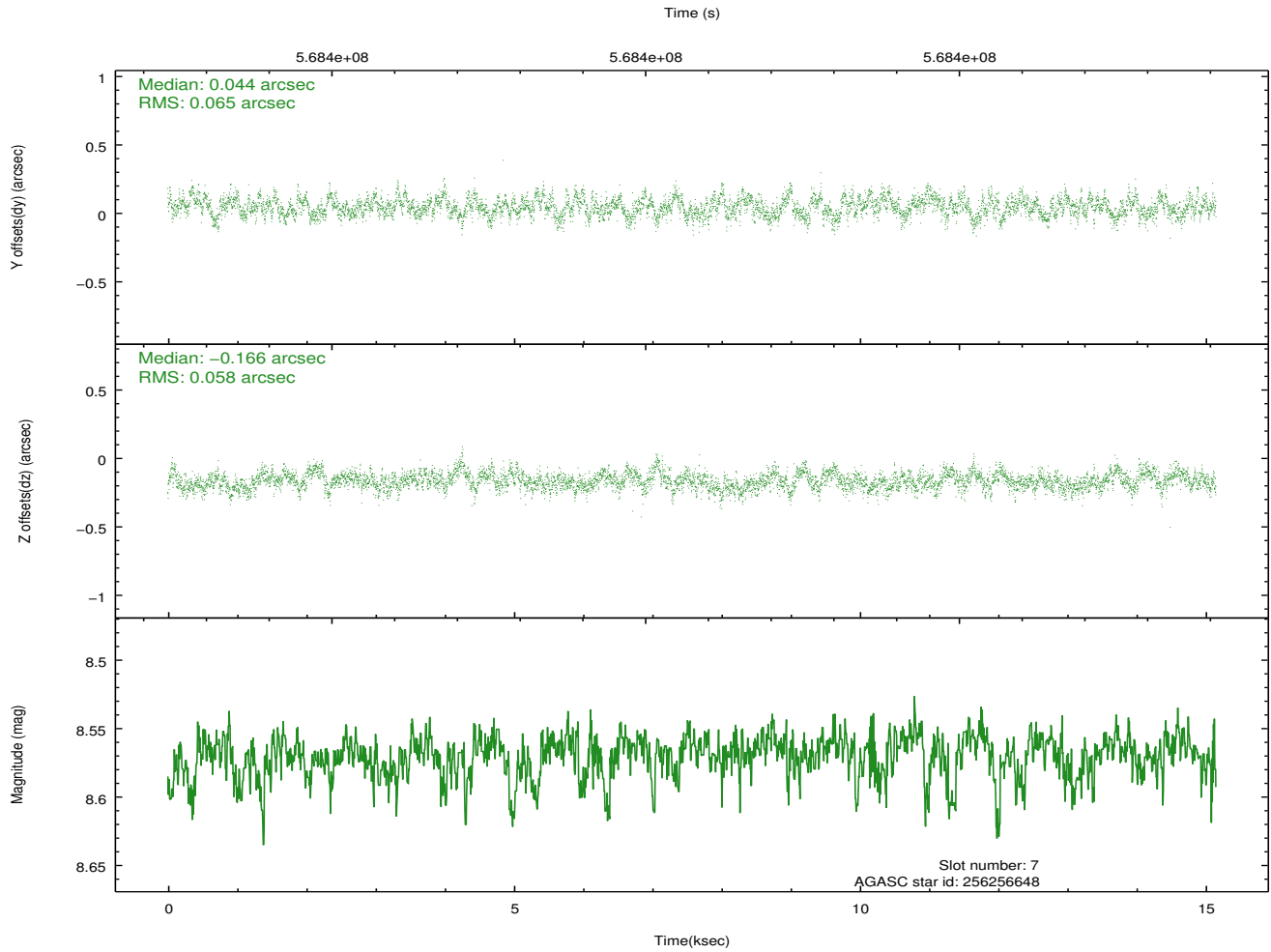
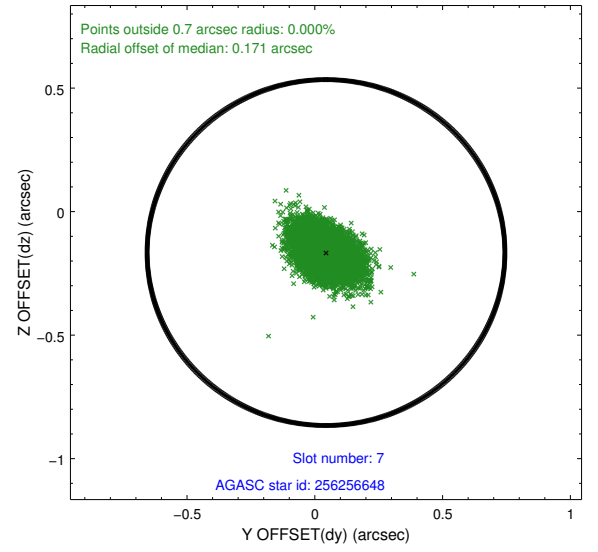
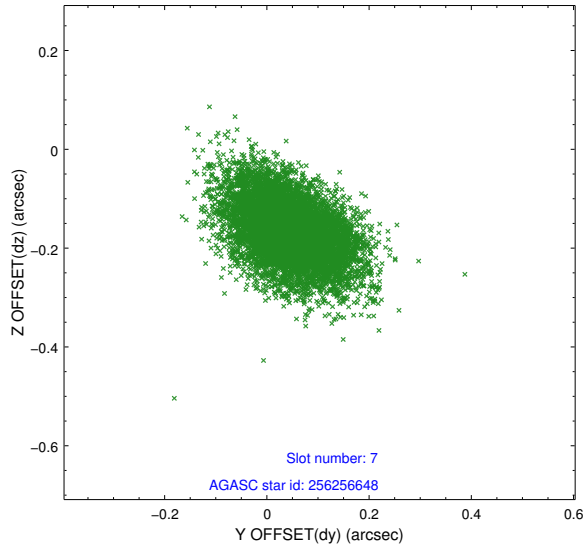
2.4.3 Slot 5



2.4.4 Slot 6

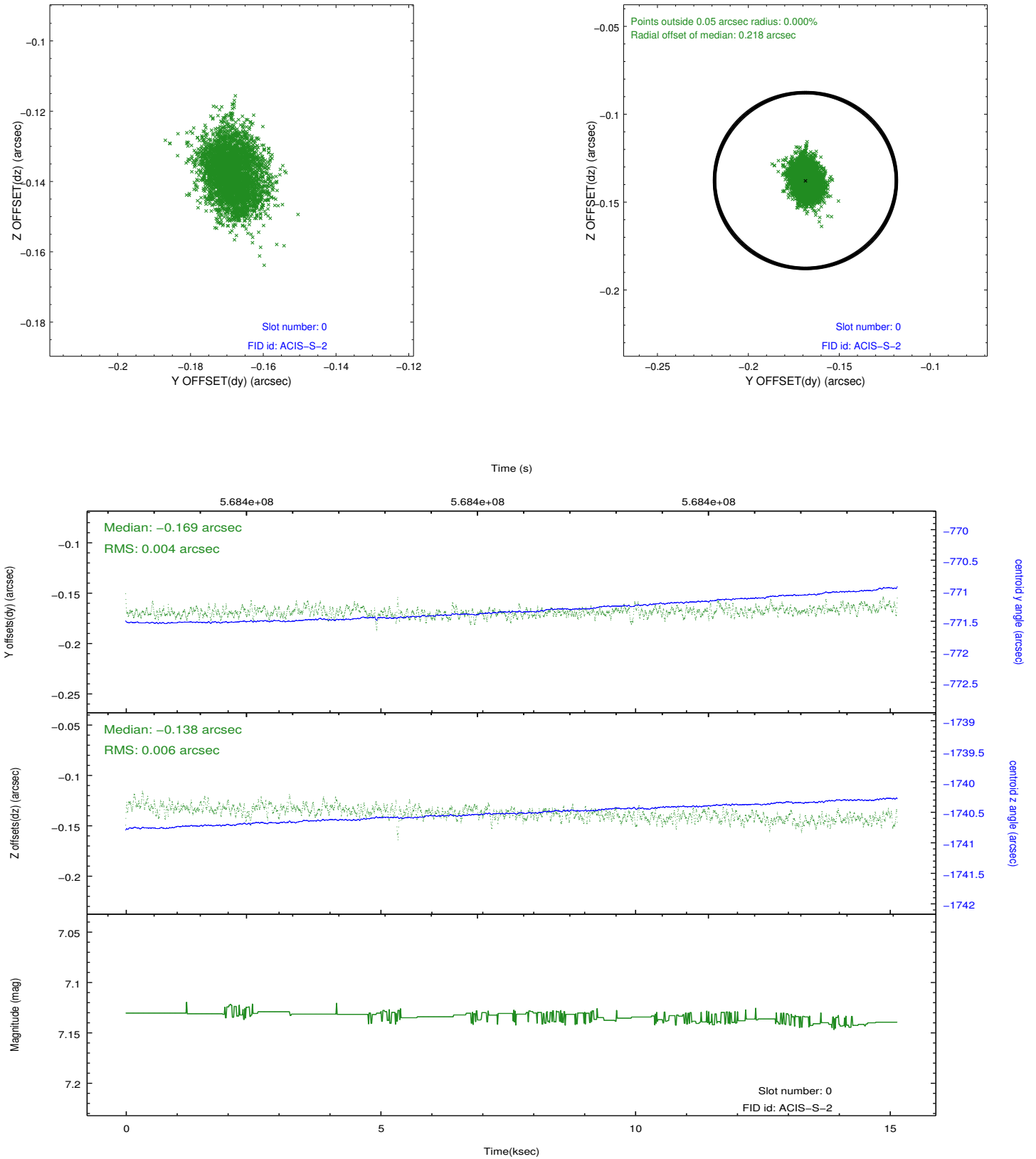


2.4.5 Slot 7

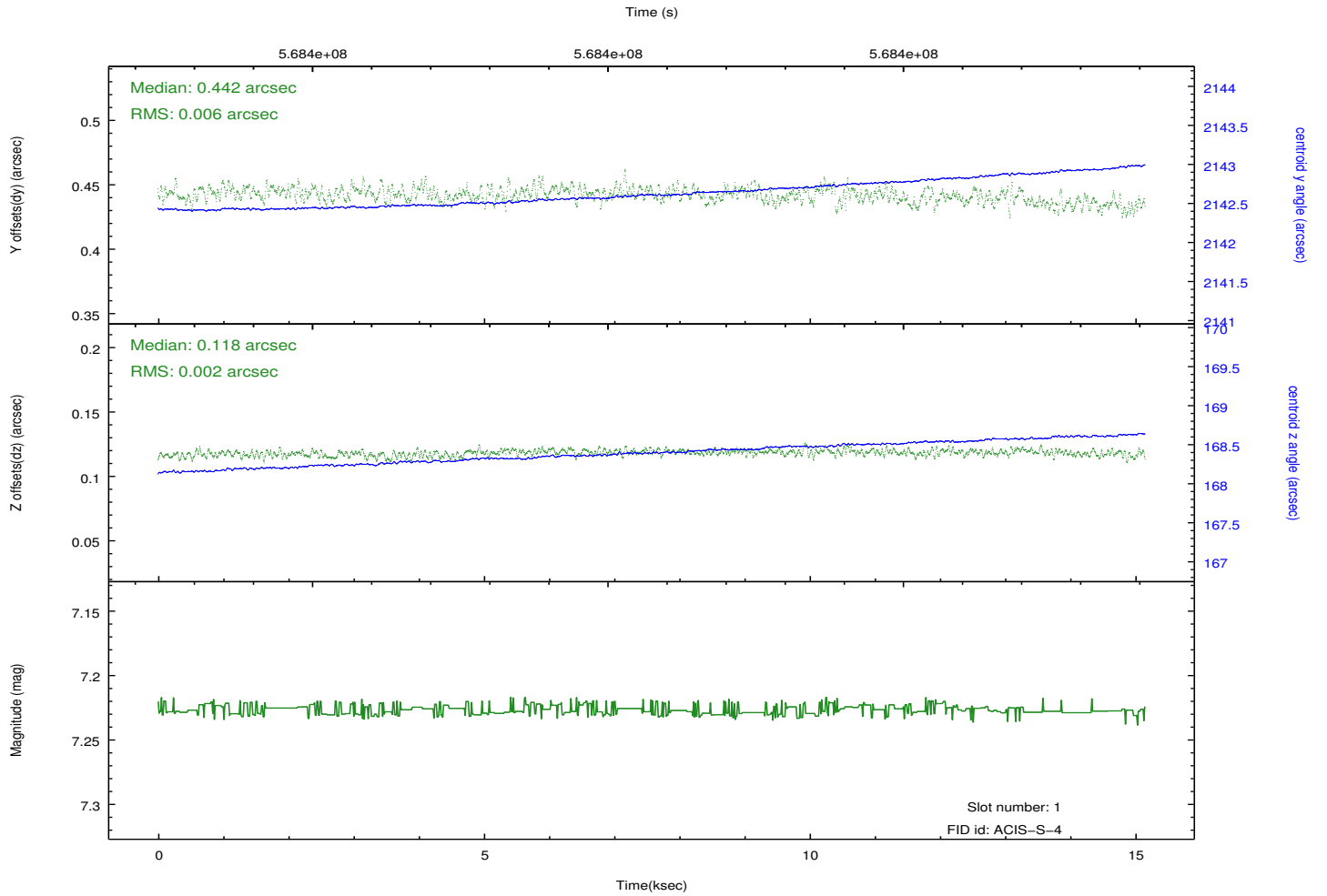
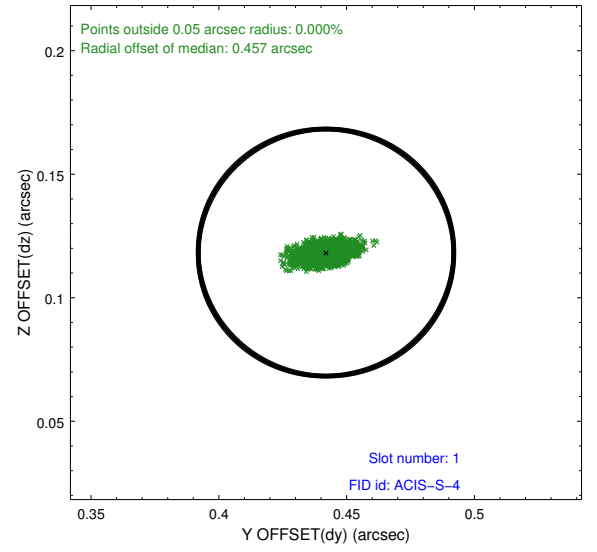
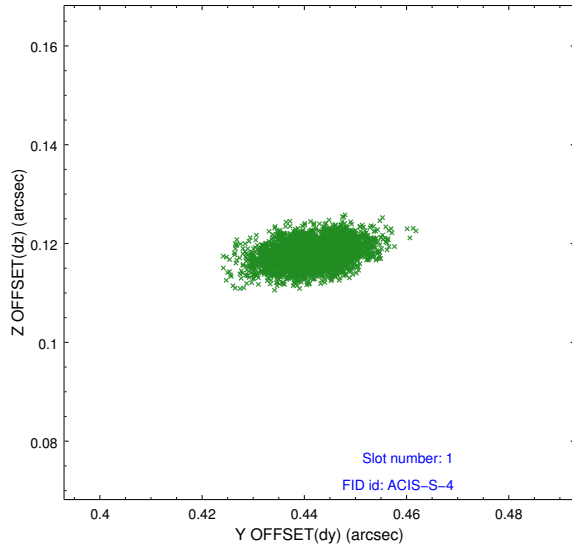


2.5 FID Slots

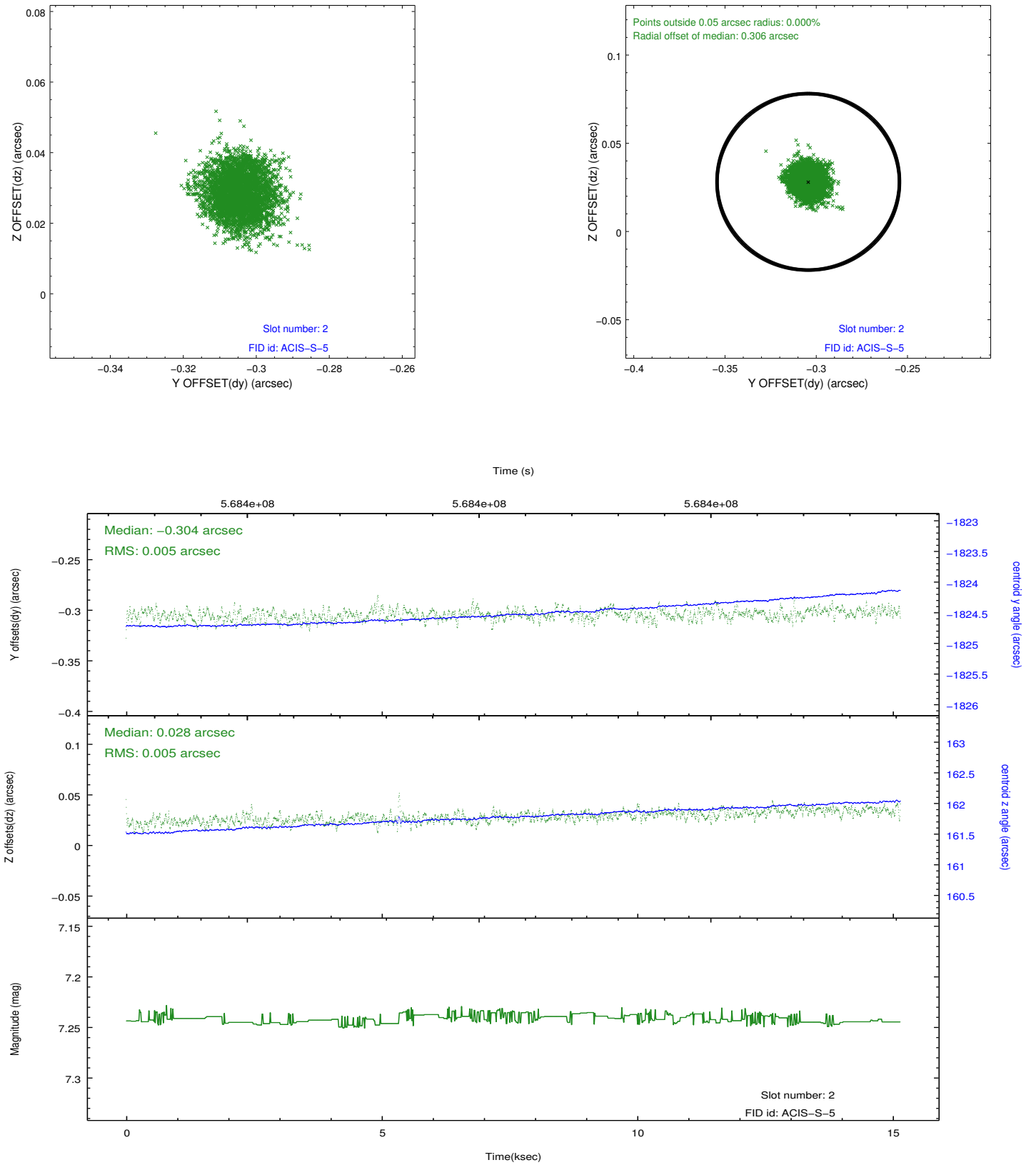
2.5.1 Slot 0



2.5.2 Slot 1



2.5.3 Slot 2



A Summary

A.1 Status

V&V Scientist	Beth Sundheim
V&V Date (YYYY-MM-DD)	2016.01.05
V&V Edition	1
V&V Disposition and Status	OK
V&V Charge Time	15.055657212377

A.2 Comments

Optional chip S1 was dropped.