

V&V Reference Report

L2 ASCDS Version : 10.4.2.1

Observation 18095 - L2 Version 1
Chandra X-Ray Center

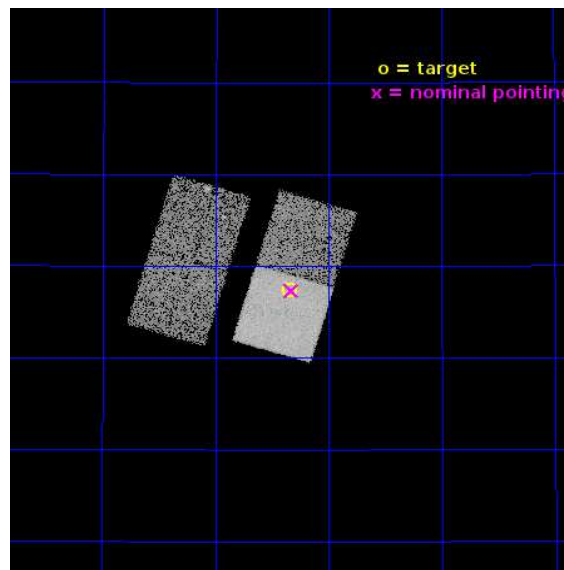
L2 Processing Date : Dec 4 2015

Contents

1	Front	2
2	OBI	3
2.1	OBI	3
2.1.1	Images	3
2.1.2	Bias	3
2.1.3	Parameters	4
2.1.4	Events	4
2.2	Compared Parameters	5
2.3	Aspect	6
2.4	Star Slots	9
2.4.1	Slot 3	9
2.4.2	Slot 4	10
2.4.3	Slot 5	11
2.4.4	Slot 6	12
2.4.5	Slot 7	13
2.5	FID Slots	14
2.5.1	Slot 0	14
2.5.2	Slot 1	15
2.5.3	Slot 2	16
A	Summary	17
A.1	Status	17
A.2	Comments	17

1 Front

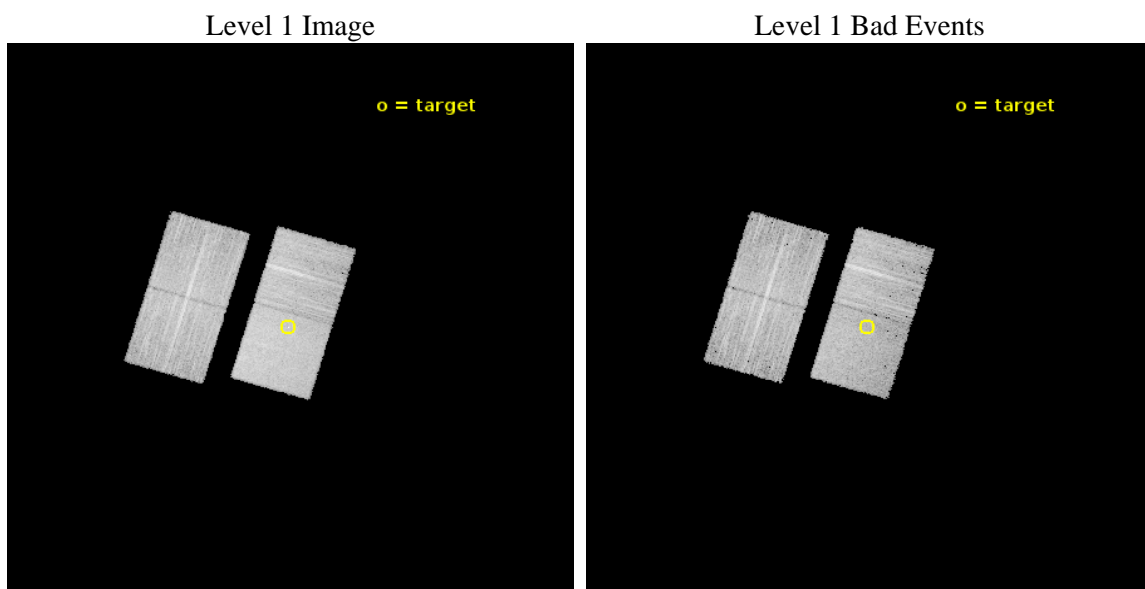
seq_num	703161	Sequence number
obs_id	18095	Observation id
title	Extending the Extragalactic 3CR Chandra Survey to z=1.5	Proposal t
observer	Francesco Massaro	Principal investigator
object	3CR 173	Source name
dtcycle	0	
cycle	P	events from which exps? Prim/Second/Both
ra_targ	105.585417	Observer's specified target RA [deg]
dec_targ	37.956278	Observer's specified target Dec [deg]
ra_nom	105.58251880143	Nominal RA [deg]
dec_nom	37.955543606573	Nominal Dec [deg]
roll_nom	106.6882159717	Nominal Roll [deg]
revision	1	Processing version of data
ontime	12566.132553697	Sum of GTIs [s]
livetime	12401.94678083	Livetime [s]
ontime2	12566.009433746	Sum of GTIs [s]
ontime3	12566.05047369	Sum of GTIs [s]
ontime6	12566.091513753	Sum of GTIs [s]
ontime7	12566.132553697	Sum of GTIs [s]
l2events	60538	Number of level 2 events



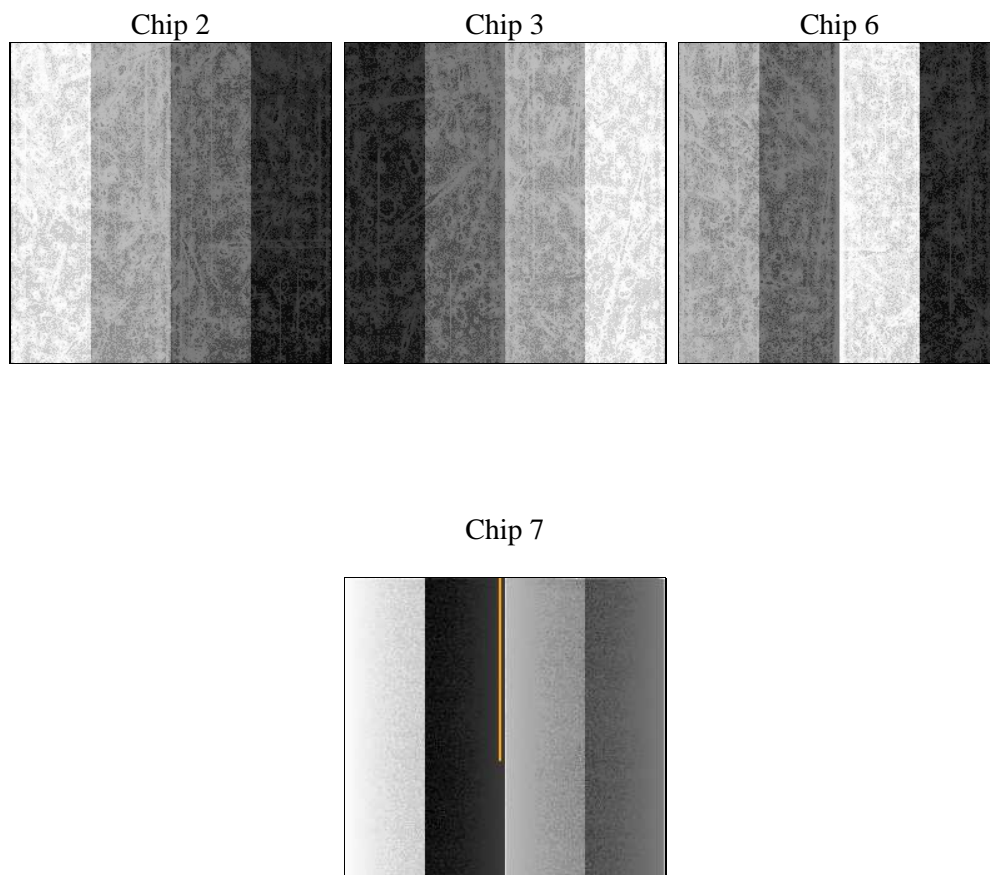
2 OBI

2.1 OBI

2.1.1 Images



2.1.2 Bias



2.1.3 Parameters

obi_num	1	Obi number	sched_exp_time	12500.000000	[s] Scheduled observation exposure time
ascdsver	10.4.2.1	Processing system revision	ontime	12566.132553697	Sum of GTIs [s]
caldsver	4.6.10a	 	ontime2	12566.009433746	Sum of GTIs [s]
date	2015-12-04T06:18:16	Date and time of file creation	ontime3	12566.05047369	Sum of GTIs [s]
revision	1	Processing version of data	ontime6	12566.091513753	Sum of GTIs [s]
			ontime7	12566.132553697	Sum of GTIs [s]
			l1events	309774	Number of level 1 events

2.1.4 Events

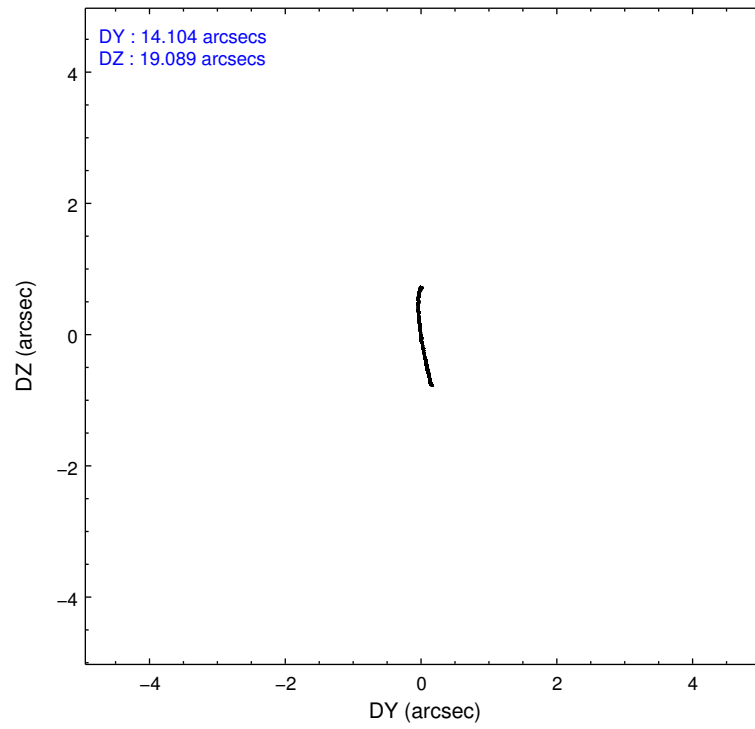
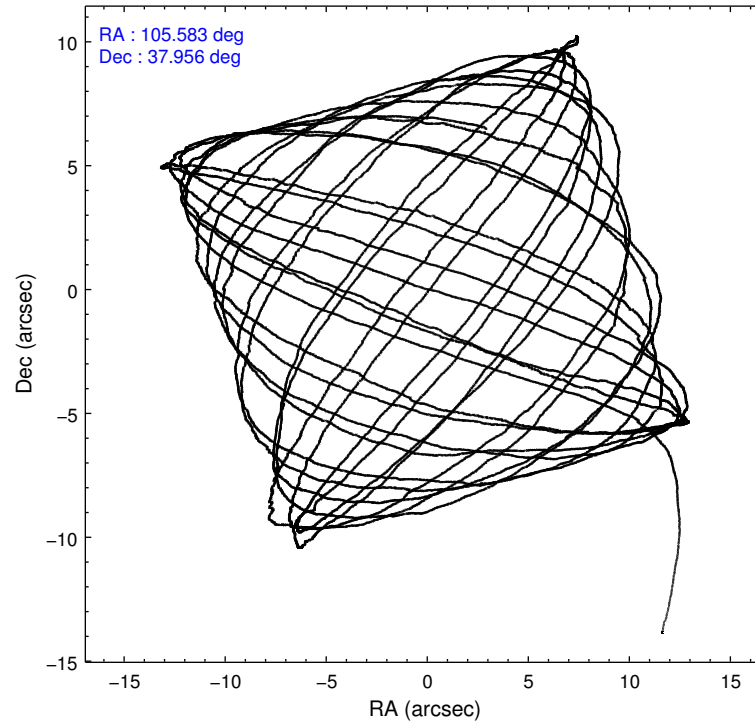
	ccd 2	ccd 3	ccd 6	ccd 7
level 1 events	71230	70051	74411	94082
rejected events	63233	62512	65855	53311
rejected %	88%	89%	88%	56%

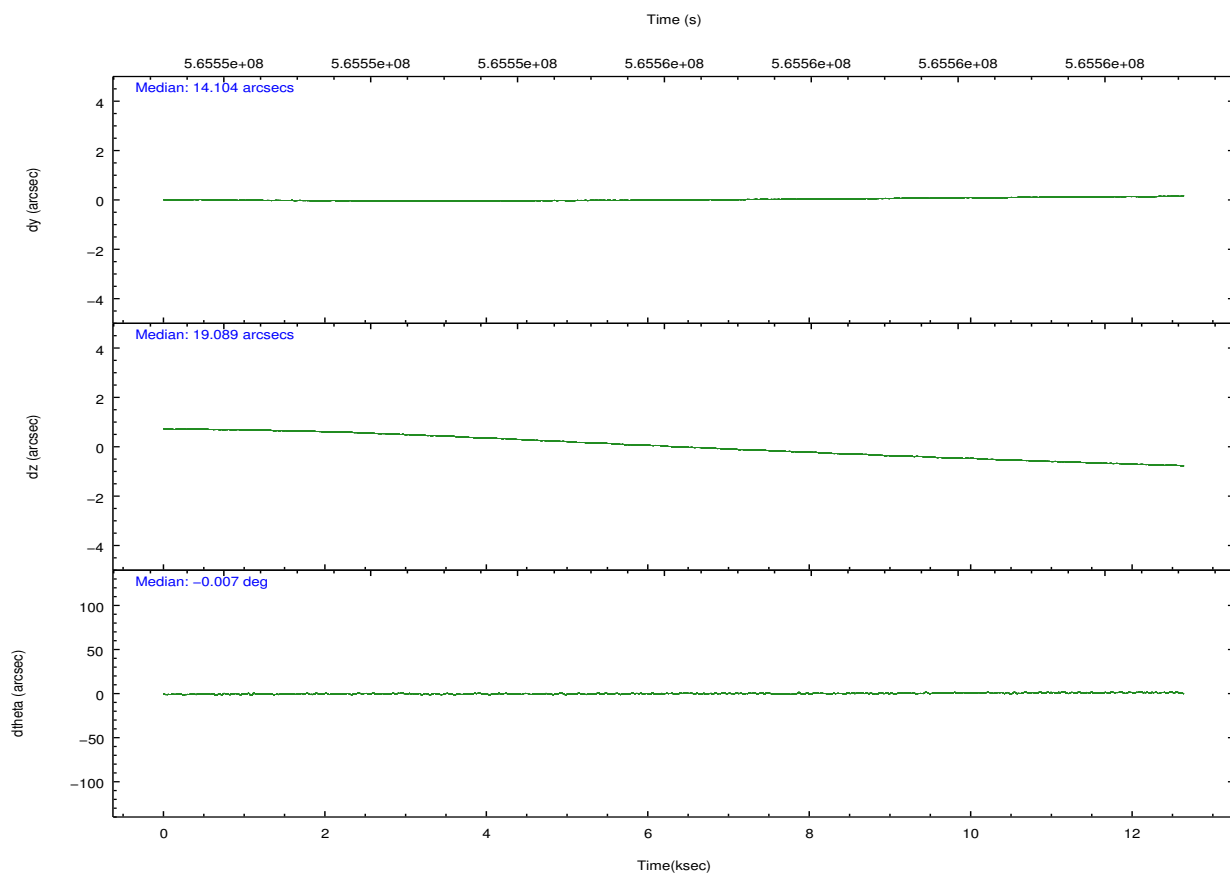
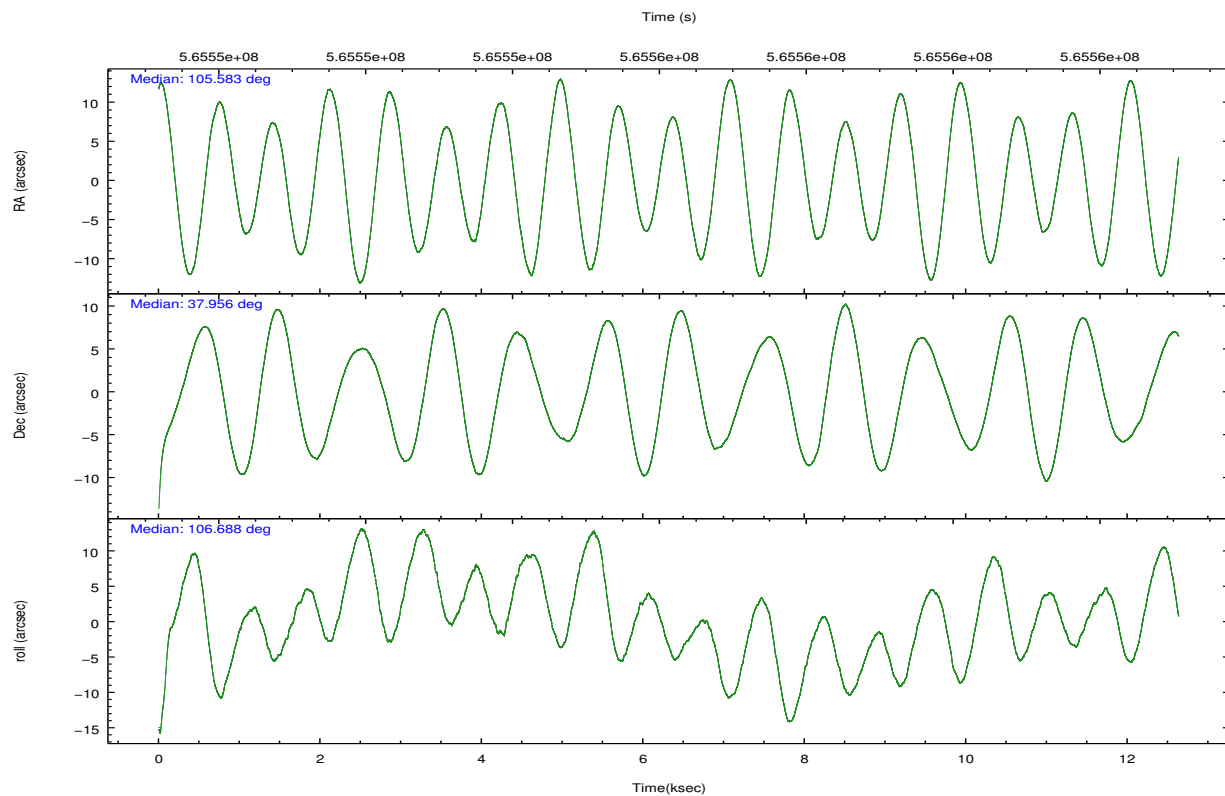
	ccd 2	ccd 3	ccd 6	ccd 7
grade 0 events	2890	2622	2798	3434
	4%	3%	3%	3%
grade 1 events	40	45	42	127
	0%	0%	0%	0%
grade 2 events	1970	1686	1944	8462
	2%	2%	2%	8%
grade 3 events	789	830	883	3335
	1%	1%	1%	3%
grade 4 events	812	798	871	3219
	1%	1%	1%	3%
grade 5 events	2926	3546	3648	9497
	4%	5%	4%	10%
grade 6 events	1538	1605	2060	22337
	2%	2%	2%	23%
grade 7 events	60265	58919	62165	43671
	84%	84%	83%	46%

2.2 Compared Parameters

Parameter	Planned	Actual	Parameter	Planned	Actual
Instrument	ACIS	ACIS	Obspar format version number	7	7
Detector	ACIS-2367	ACIS-2367	Obspar file type	PREDICTED	ACTUAL
Grating	NONE	NONE	Obspar update status	NONE	UPDATED
Data mode	VFAINT	VFAINT	CCD I0 on	N	N
Observation mode	POINTING	POINTING	CCD I1 on	N	N
[deg] Pointing RA	105.608200	105.5825188014268	CCD I2 on	O1	Y
[deg] Pointing Dec	37.936974	37.95554360657296	CCD I3 on	O2	Y
[deg] Pointing Roll	106.515804	106.688215971703	CCD S0 on	N	N
[mm] SIM focus pos	-0.684267	-0.6828225247311905	CCD S1 on	N	N
[mm] SIM defocus	0	0.001444936568705701	CCD S2 on	Y	Y
[mm] SIM translation stage pos	-190.132523	-190.1425803651734	CCD S3 on	Y	Y
[mm] SIM translation stage offset	0	0.01005778216563158	CCD S4 on	N	N
[s] Observation start time (MET)	565549963.184000	565548827.31372	CCD S5 on	N	N
Observation start date	2015-12-03T17:11:35	2015-12-03T16:53:47	Number of optional ACIS chips dropped	0	0
[s] Observation end time (MET)	565562463.184000	565563427.92705	On-chip summing requested	N	N
Observation end date	2015-12-03T20:39:55	2015-12-03T20:57:07	Subarray requested	NONE	NONE
Read mode	TIMED	TIMED	Alternating exposures requested	N	N
			[s] Primary exposure time	0.000000	3.1

2.3 Aspect



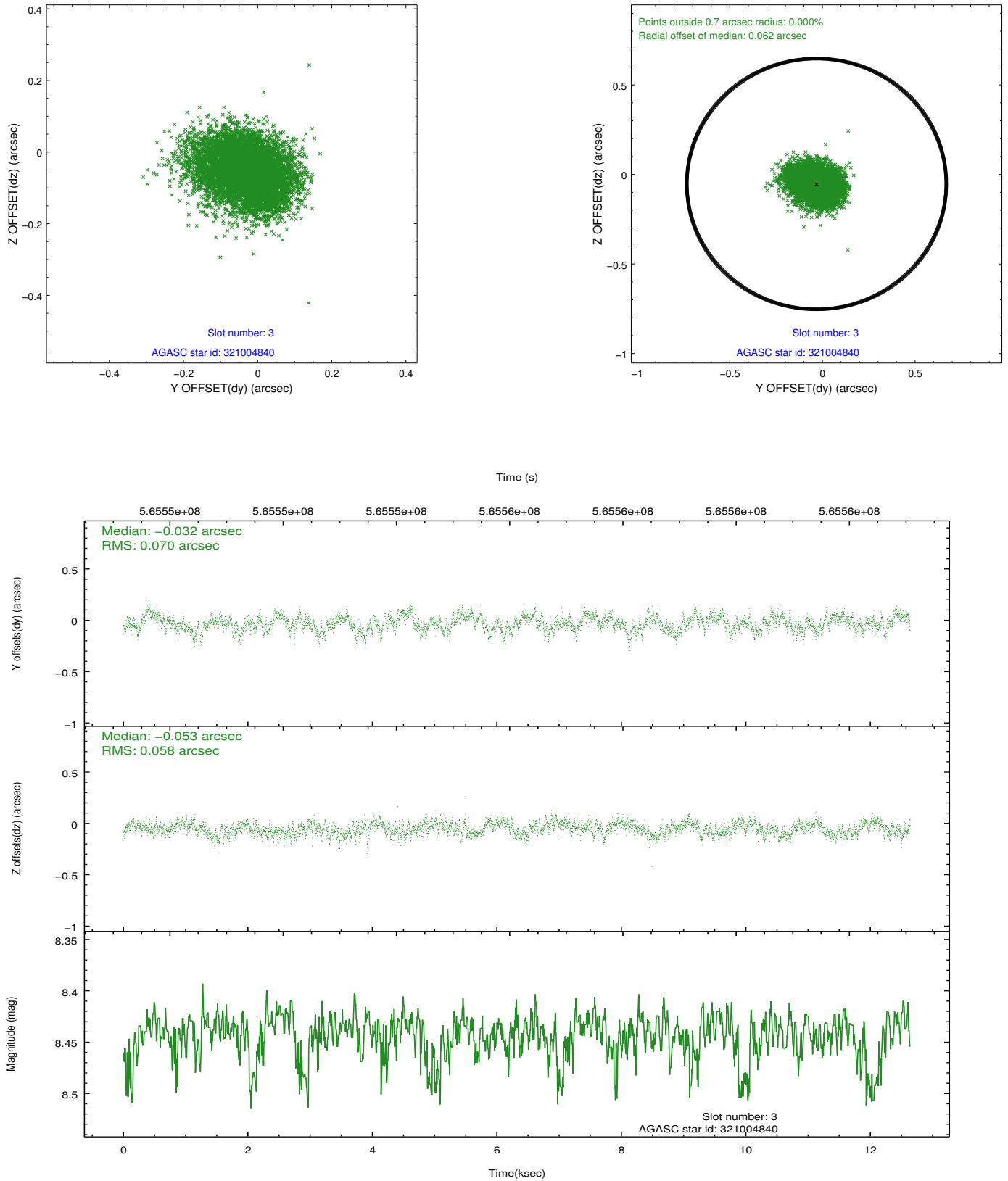


Slot Statistics

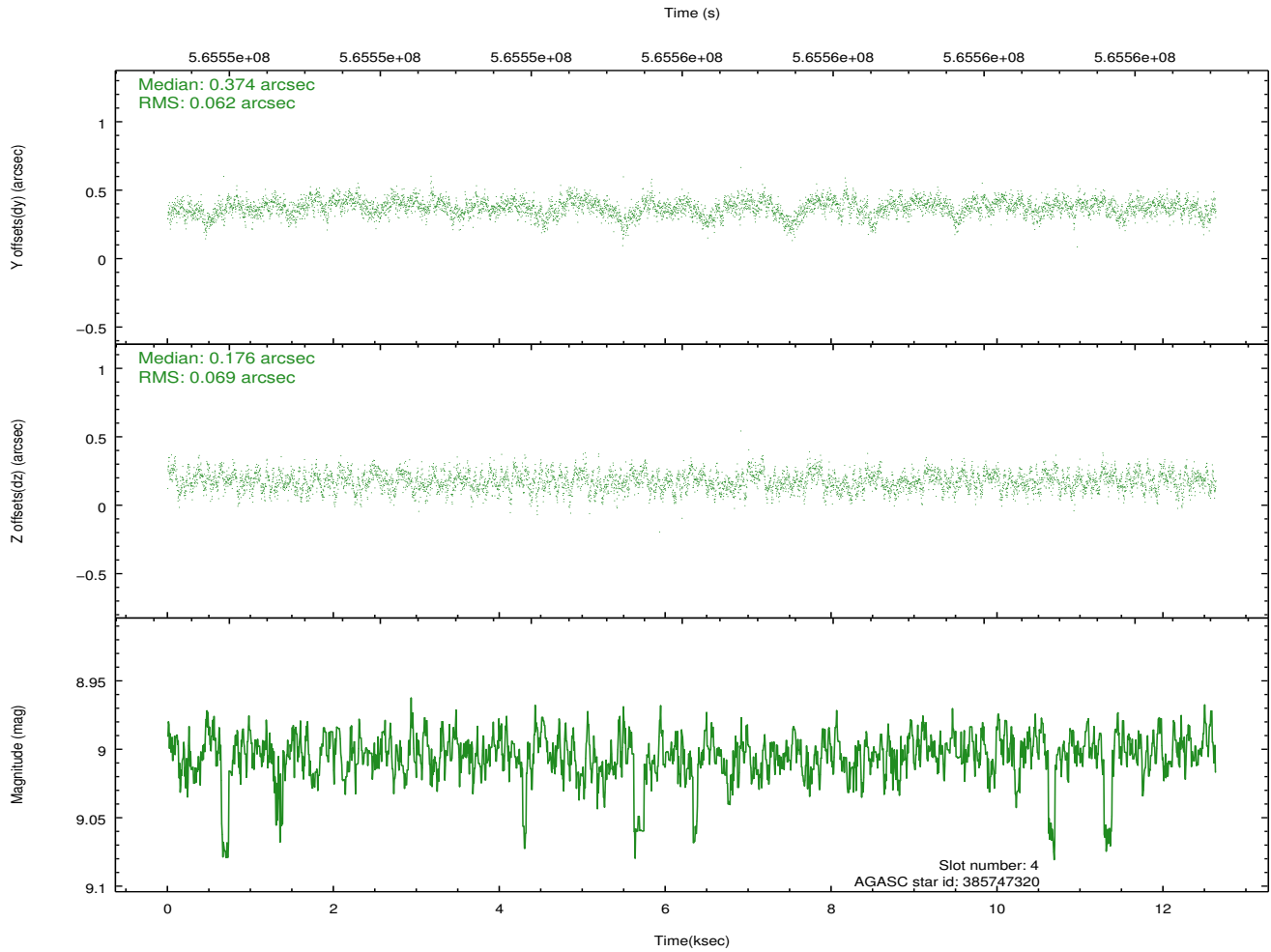
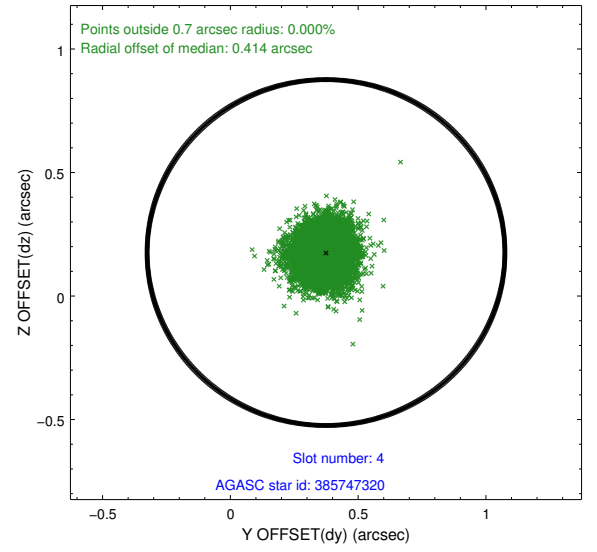
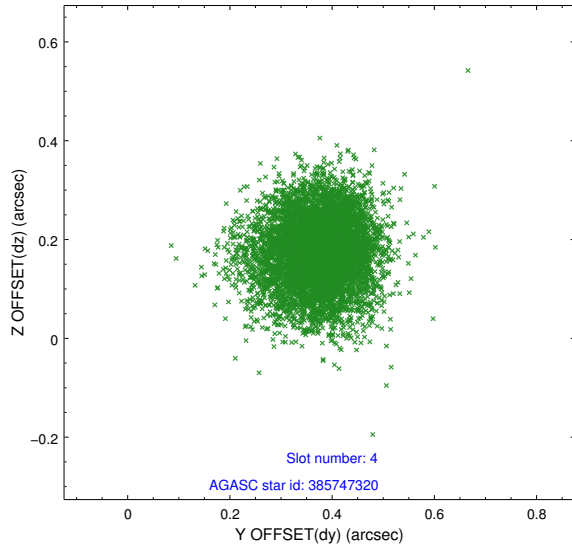
slot	status	used	id	mag	n_pts	med_dy	med_dz	dr1	dr2	ra	dec	mean_y	mean_z
0	FID		ACIS-S-1	7.21	3082	0.136	-0.054	0.016	0.025	0.000000	0.000000	929.15	-1736.20
1	FID		ACIS-S-5	7.23	3081	-0.285	0.074	0.013	0.020	0.000000	0.000000	-1820.11	161.00
2	FID		ACIS-S-6	7.35	3082	0.125	-0.012	0.023	0.042	0.000000	0.000000	394.20	805.38
3	GUIDE	used	321004840	8.44	6163	-0.032	-0.053	0.098	0.154	105.660250	37.366654	-2010.61	440.84
4	GUIDE	used	385747320	9.00	6161	0.374	0.176	0.099	0.158	106.218270	37.770128	-1063.74	-1495.05
5	GUIDE	used	385754400	8.94	6162	-0.069	0.033	0.099	0.161	105.932130	38.276731	913.89	-1226.03
6	GUIDE	used	321136504	8.49	6162	0.143	0.115	0.112	0.185	105.905853	37.330617	-2333.28	-196.83
7	GUIDE	used	385752376	9.34	6160	-0.411	-0.265	0.120	0.191	105.015853	38.480040	2353.44	1042.98

2.4 Star Slots

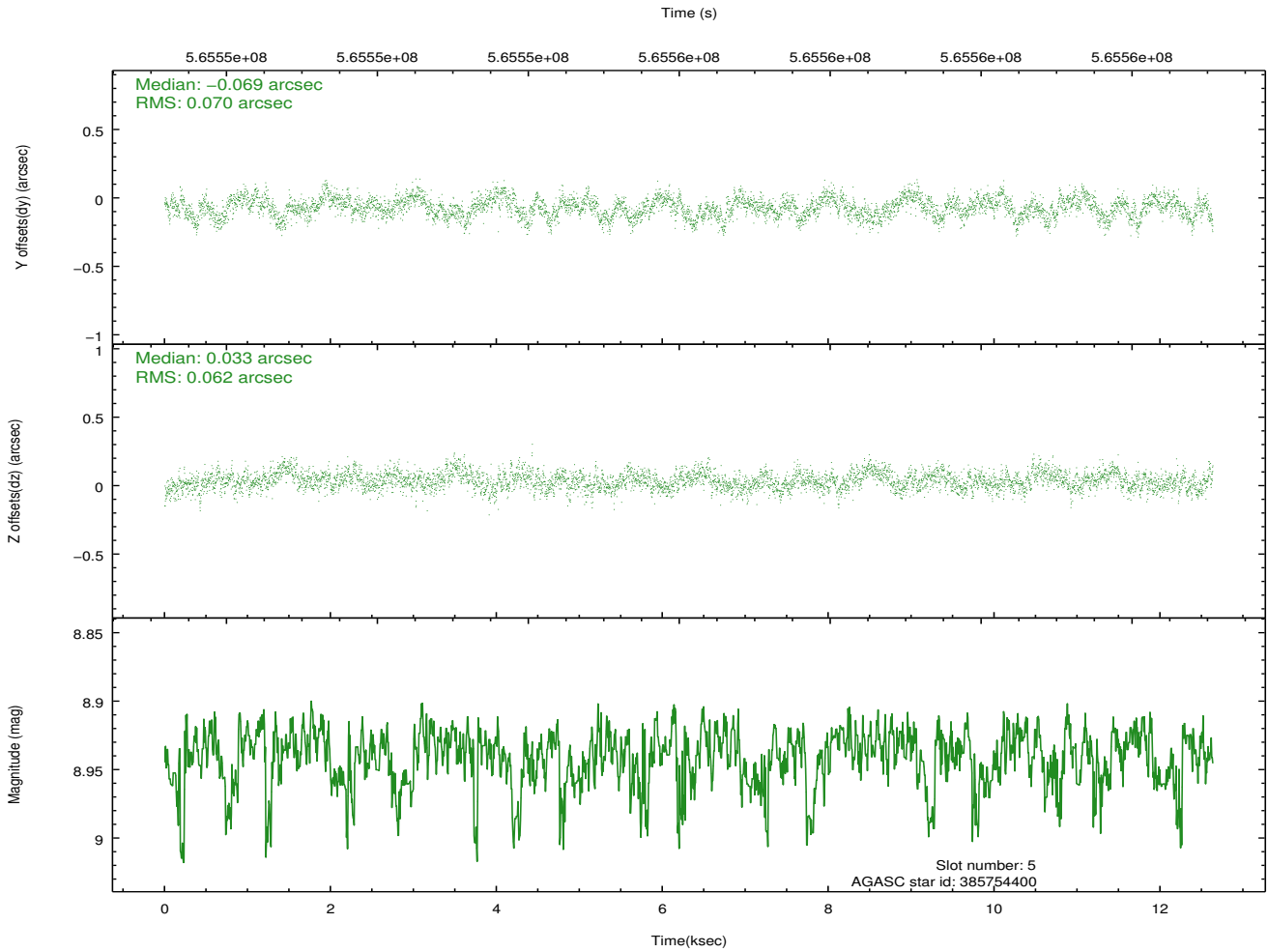
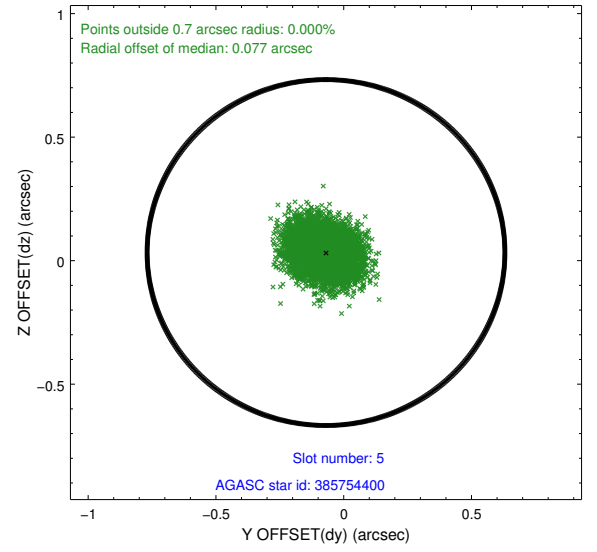
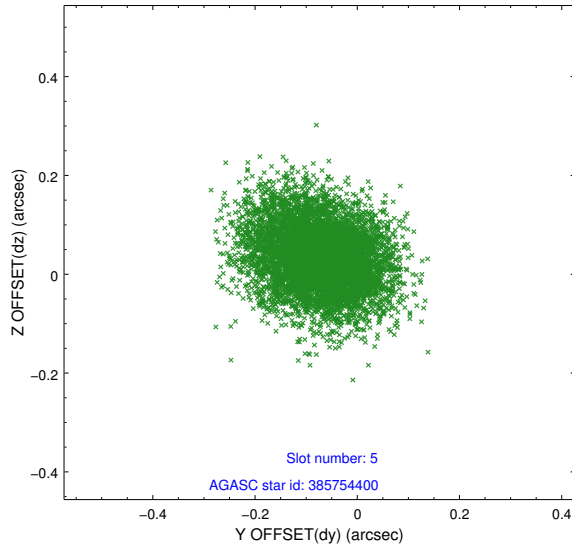
2.4.1 Slot 3



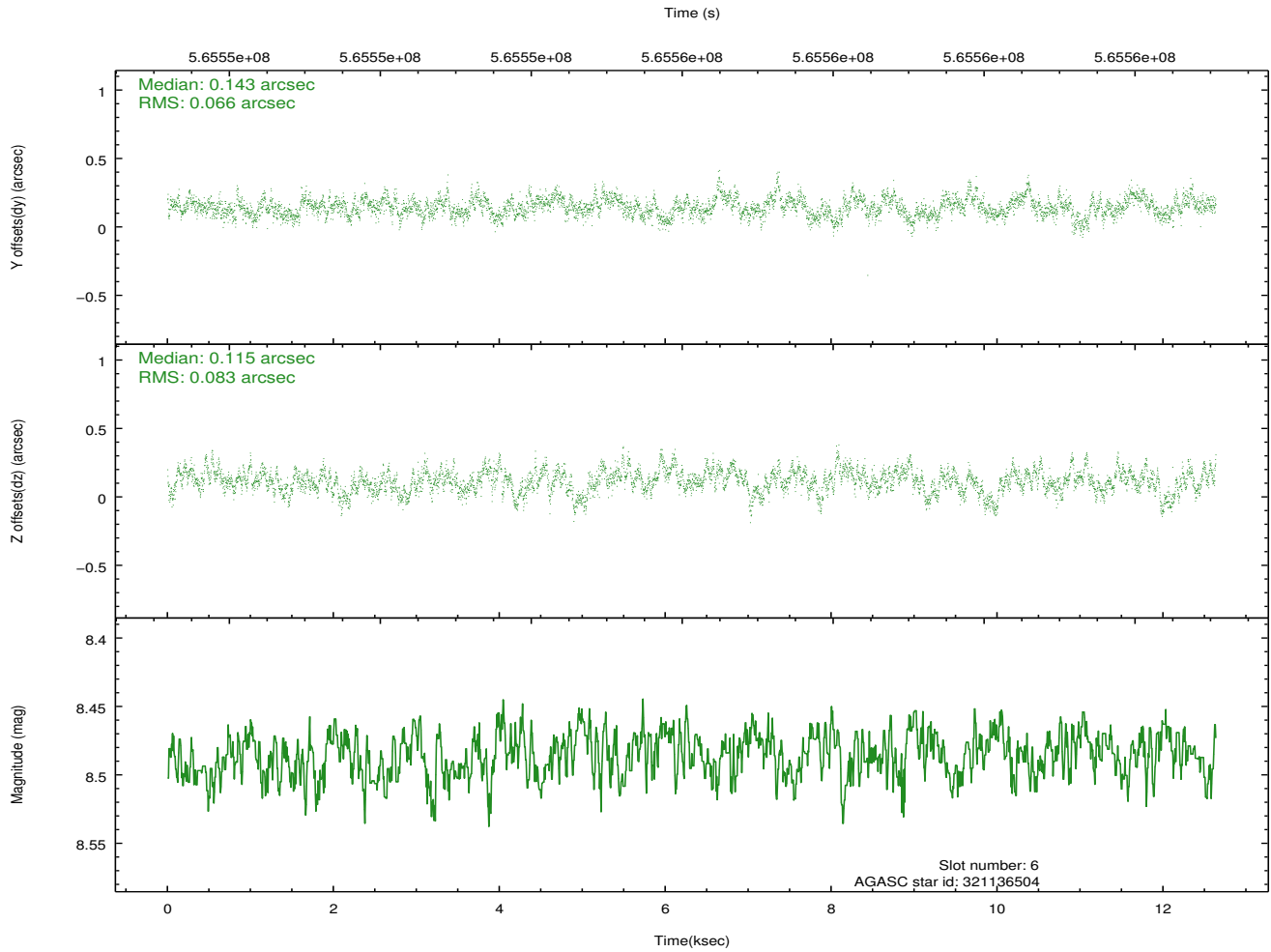
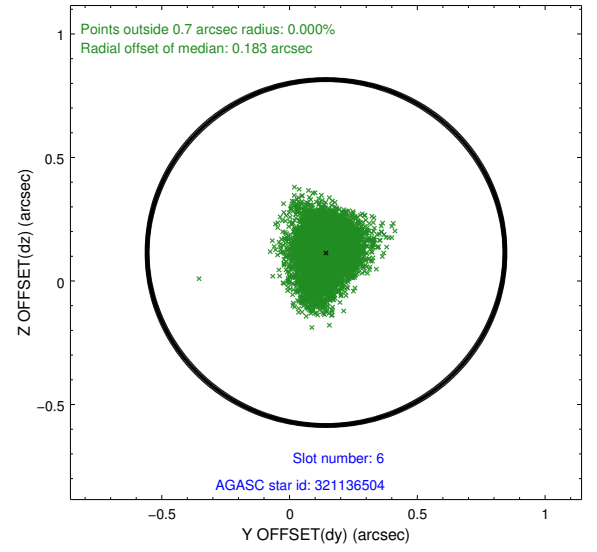
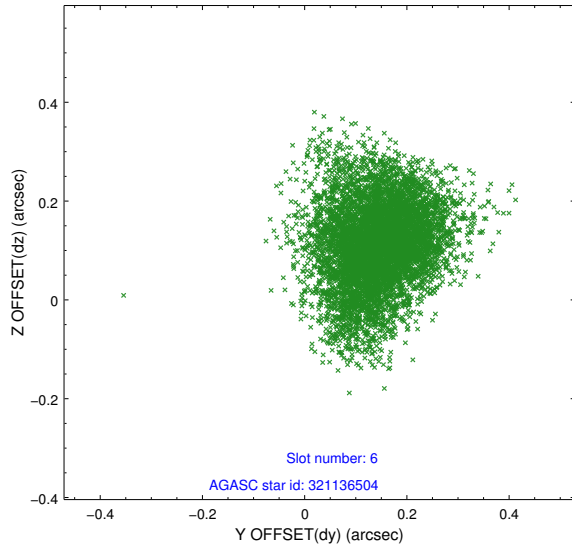
2.4.2 Slot 4



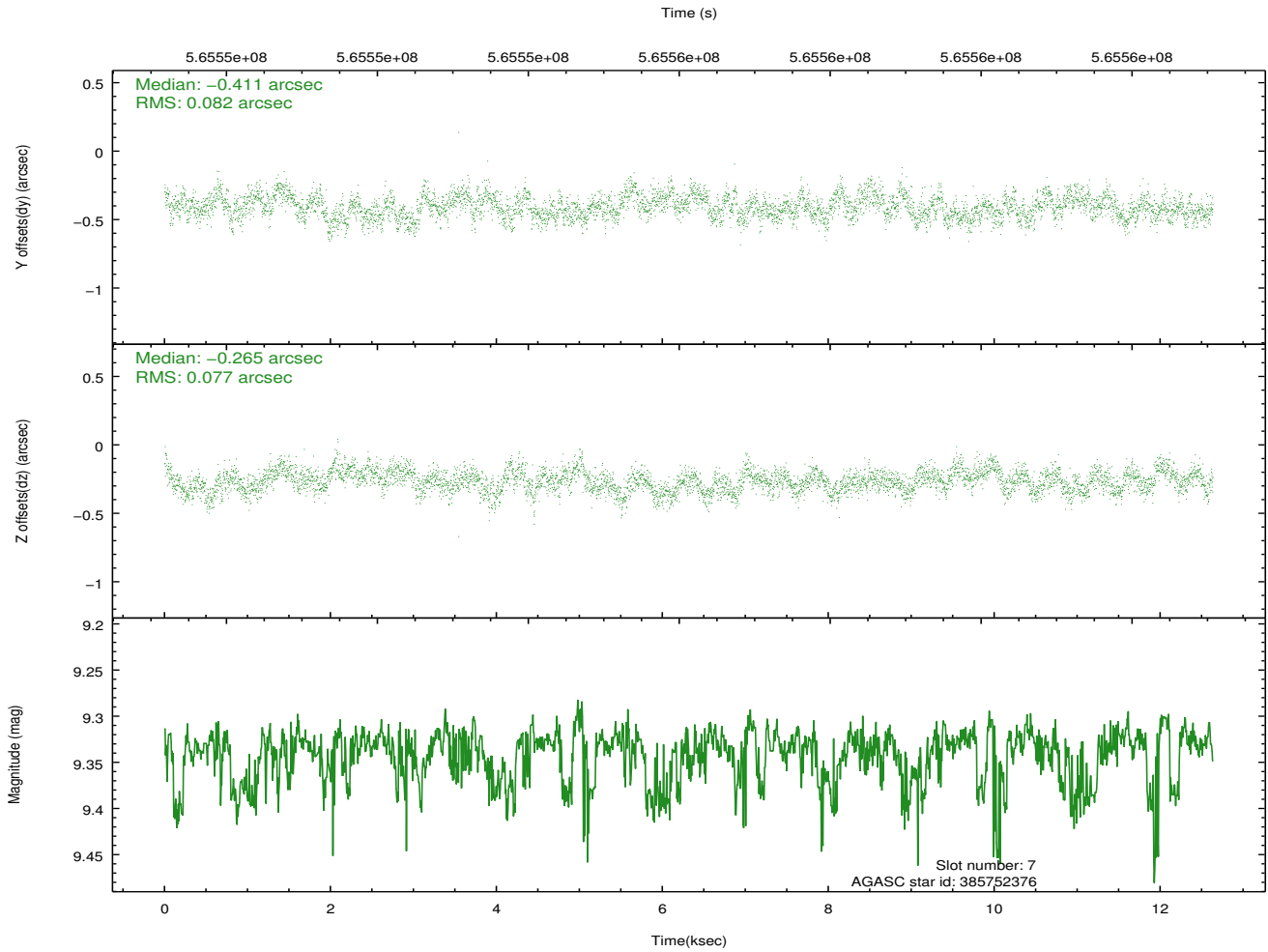
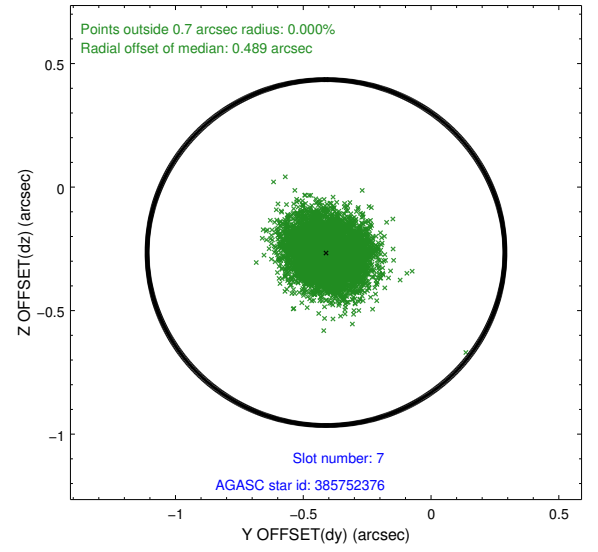
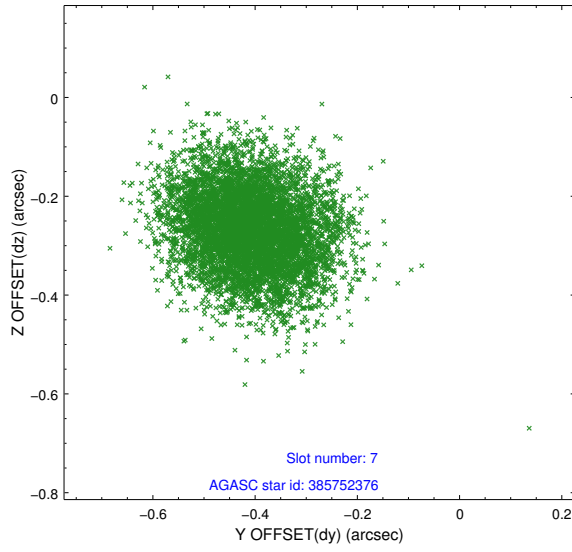
2.4.3 Slot 5



2.4.4 Slot 6

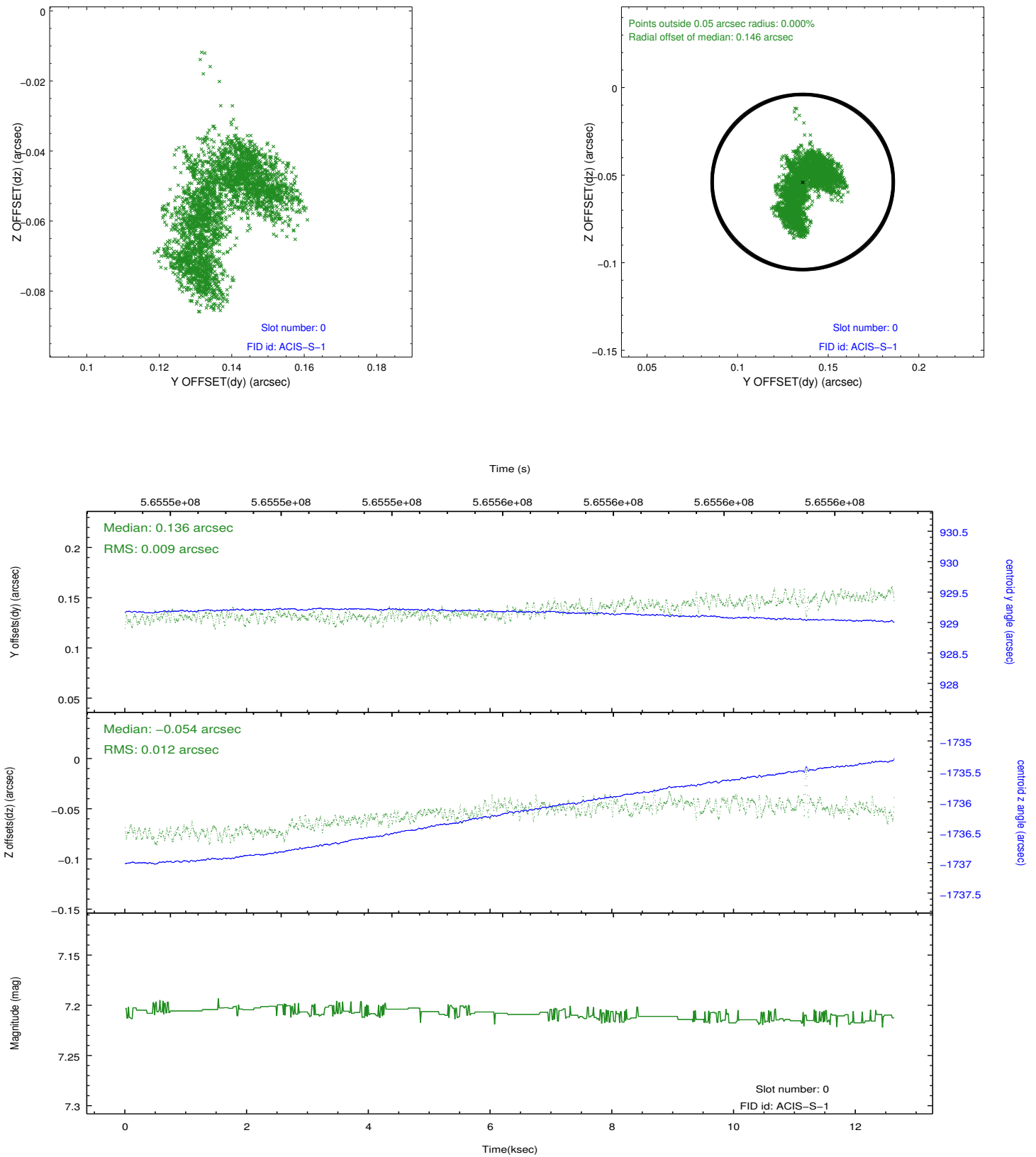


2.4.5 Slot 7

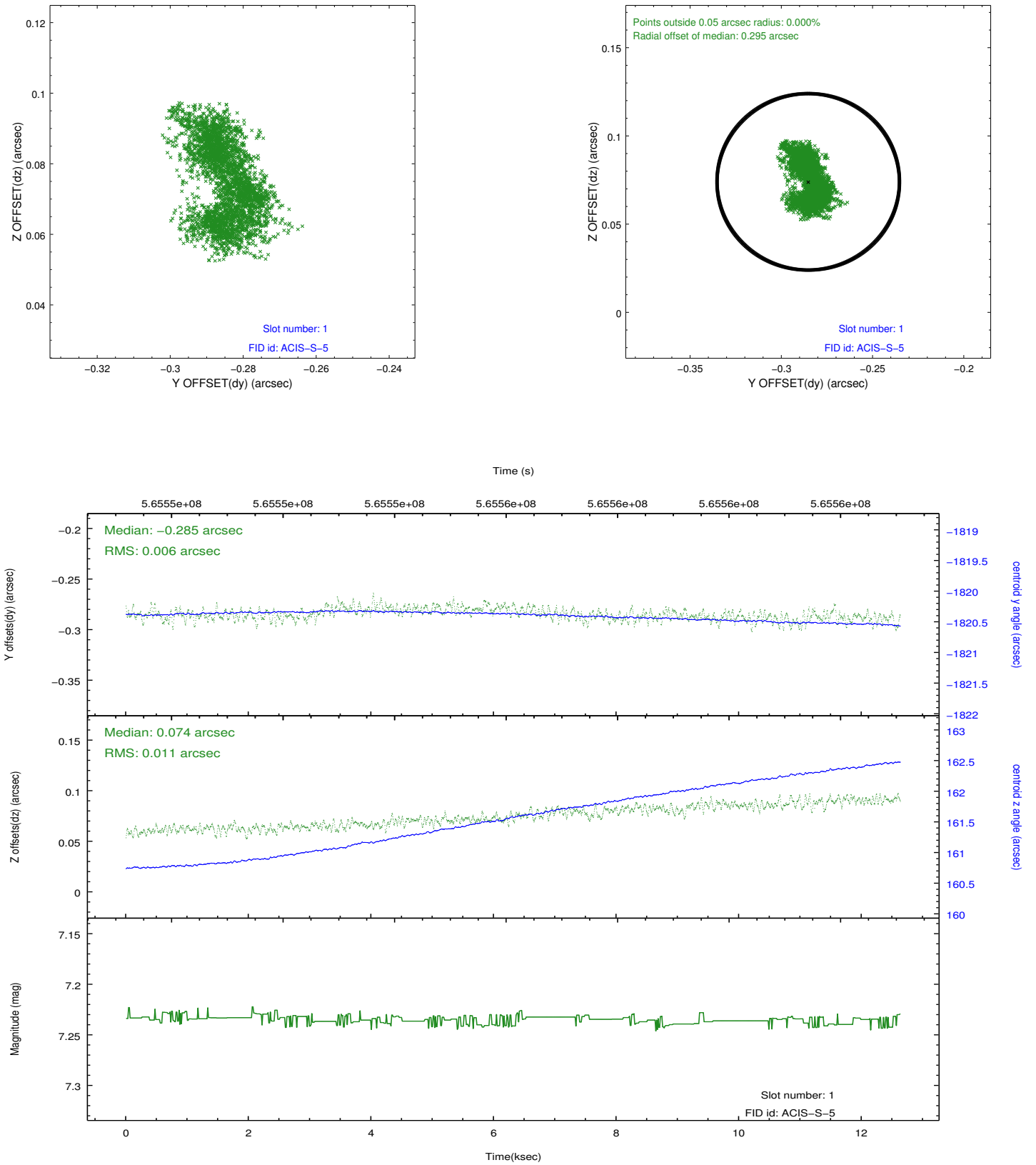


2.5 FID Slots

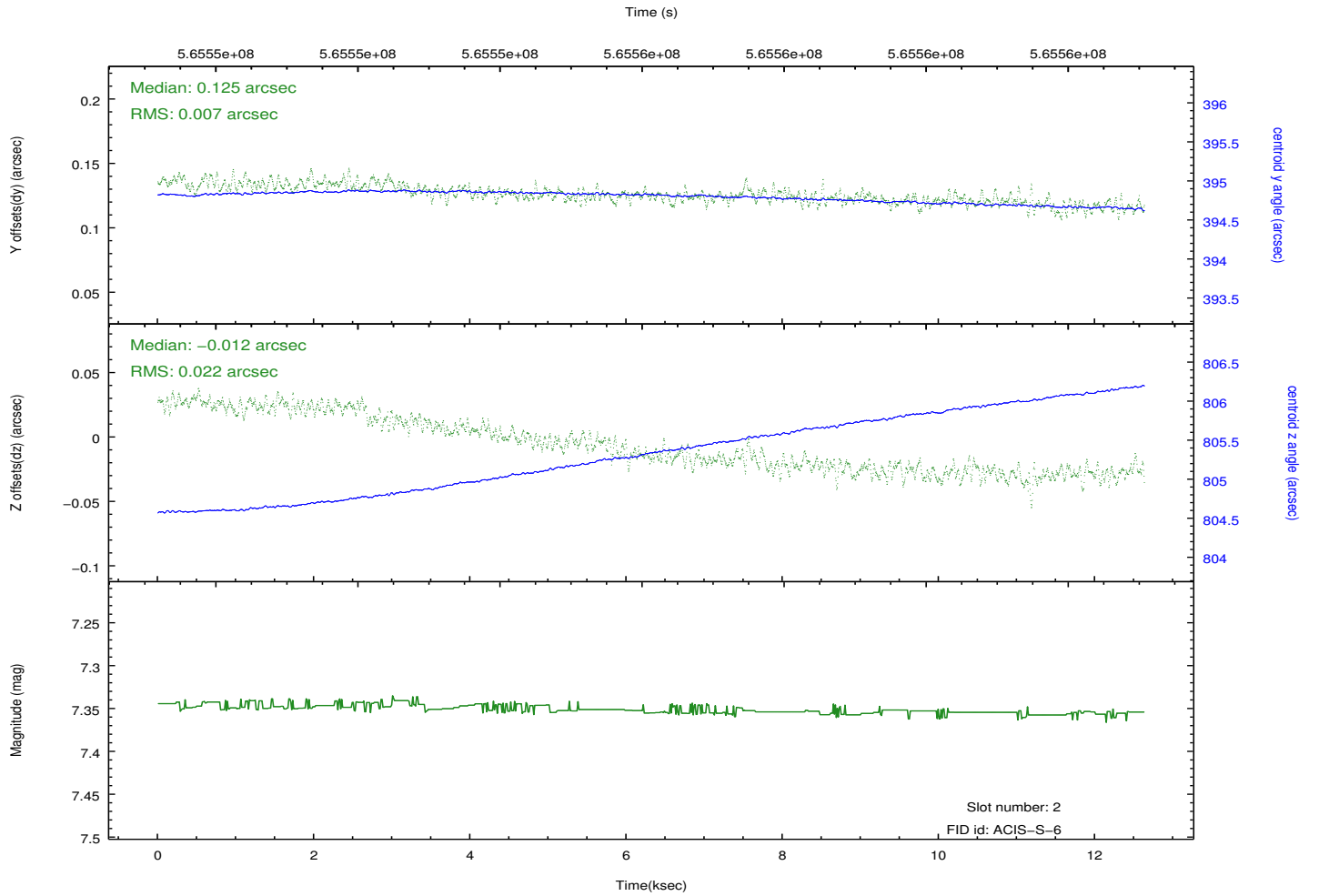
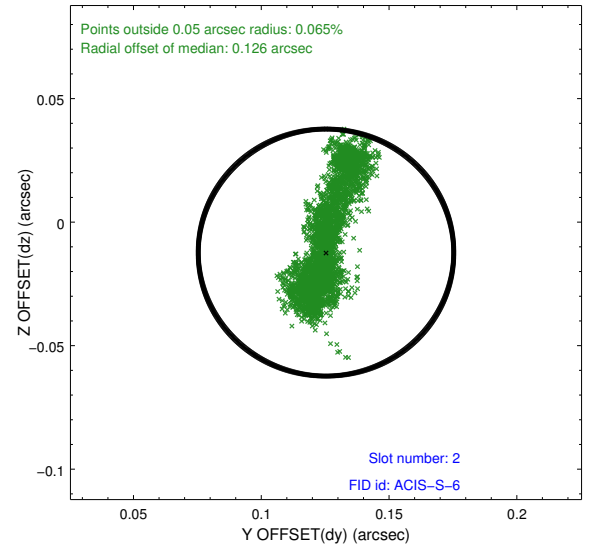
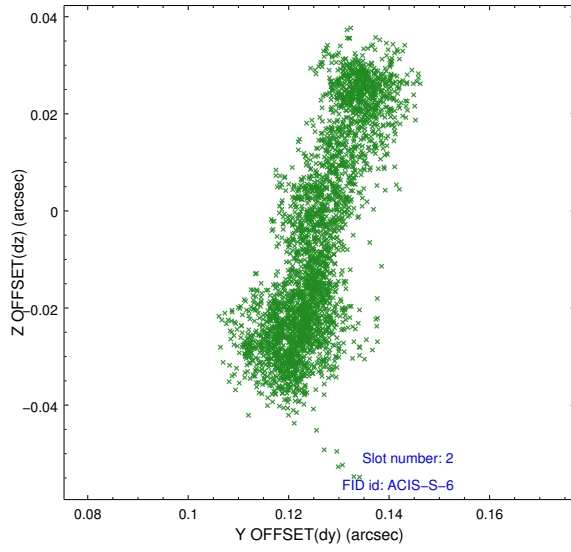
2.5.1 Slot 0



2.5.2 Slot 1



2.5.3 Slot 2



A Summary

A.1 Status

V&V Scientist	Joy Nichols
V&V Date (YYYY-MM-DD)	2015.12.04
V&V Edition	1
V&V Disposition and Status	OK
V&V Charge Time	12.566132553697

A.2 Comments