

# V&V Reference Report

## L2 ASCDS Version : 10.4.3.1

Observation 17889 - L2 Version 1  
Chandra X-Ray Center

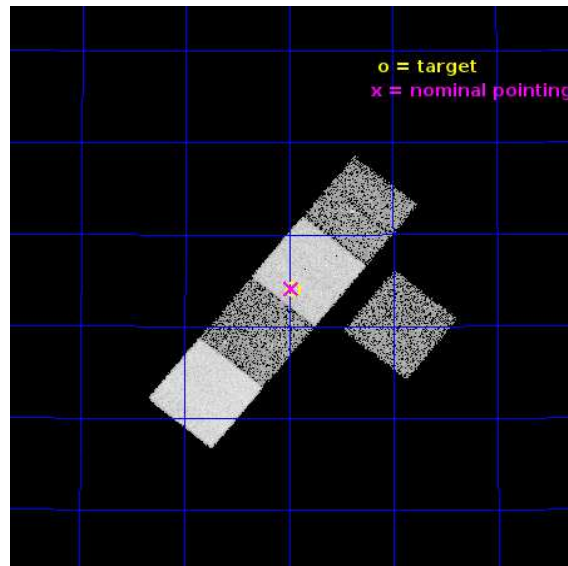
L2 Processing Date : Apr 2 2016

## Contents

<b>1</b>	<b>Front</b>	<b>2</b>
<b>2</b>	<b>OBI</b>	<b>3</b>
2.1	OBI . . . . .	3
2.1.1	Images . . . . .	3
2.1.2	Bias . . . . .	3
2.1.3	Parameters . . . . .	4
2.1.4	Events . . . . .	4
2.2	Compared Parameters . . . . .	5
2.3	Aspect . . . . .	6
2.4	Star Slots . . . . .	9
2.4.1	Slot 3 . . . . .	9
2.4.2	Slot 4 . . . . .	10
2.4.3	Slot 5 . . . . .	11
2.4.4	Slot 6 . . . . .	12
2.4.5	Slot 7 . . . . .	13
2.5	FID Slots . . . . .	14
2.5.1	Slot 0 . . . . .	14
2.5.2	Slot 1 . . . . .	15
2.5.3	Slot 2 . . . . .	16
<b>A</b>	<b>Summary</b>	<b>17</b>
A.1	Status . . . . .	17
A.2	Comments . . . . .	17

# 1 Front

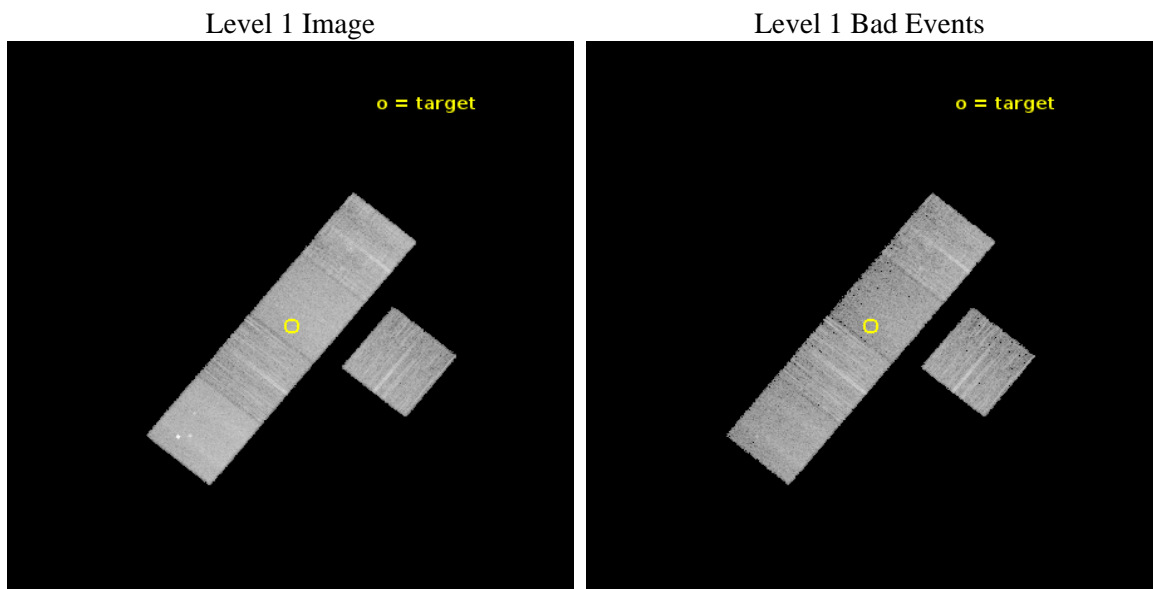
seq_num	502508	Sequence number
obs_id	17889	Observation id
title	Probing the Energetics and Environments of Hydrogen-poor Core-Collapse SNe	Proposal title
observer	Raffaella Margutti	Principal investigator
object	SN2016G	Source name
dtcycle	0	&#160
cycle	P	events from which exps? Prim/Second/Both
ra_targ	45.990583	Observer's specified target RA [deg]
dec_targ	43.400972	Observer's specified target Dec [deg]
ra_nom	45.994038790839	Nominal RA [deg]
dec_nom	43.401958878627	Nominal Dec [deg]
roll_nom	309.15426816809	Nominal Roll [deg]
revision	1	Processing version of data
ontime	10025.400077224	Sum of GTIs [s]
livetime	9894.4108446227	Livetime [s]
ontime3	10025.400077224	Sum of GTIs [s]
ontime5	10025.400077224	Sum of GTIs [s]
ontime6	10025.400077224	Sum of GTIs [s]
ontime7	10025.400077224	Sum of GTIs [s]
ontime8	10025.400077224	Sum of GTIs [s]
l2events	97147	Number of level 2 events



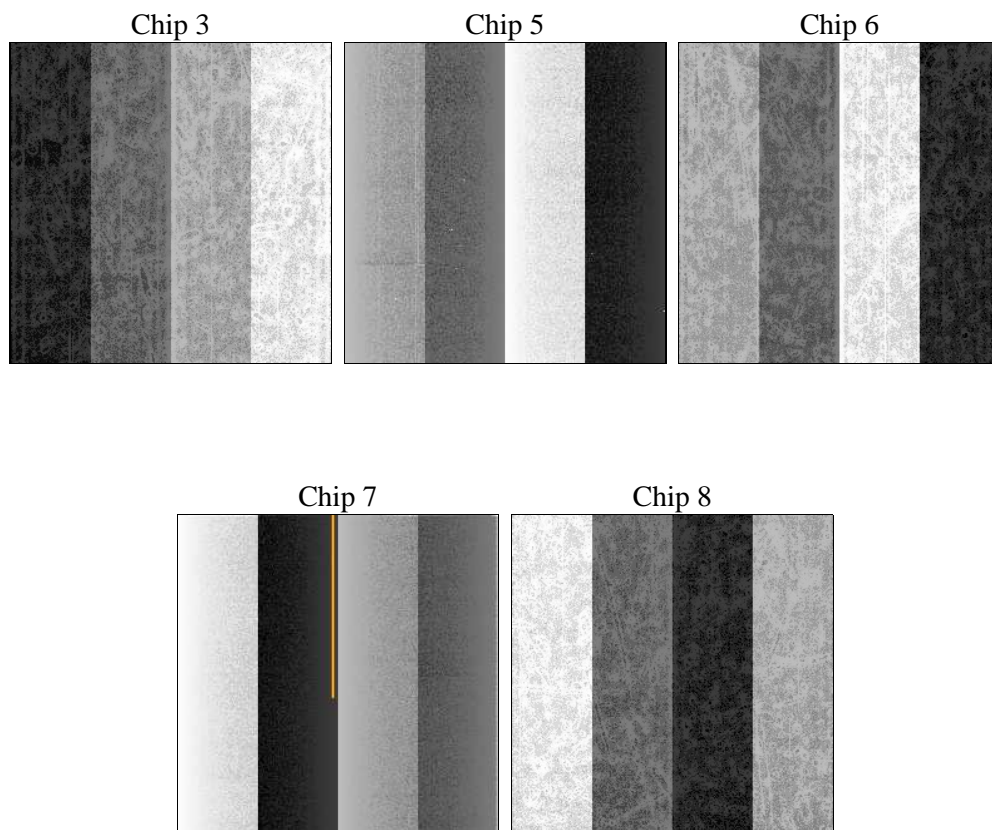
## 2 OBI

### 2.1 OBI

#### 2.1.1 Images



#### 2.1.2 Bias



### 2.1.3 Parameters

obi_num	2	Obi number	sched_exp_time	10000.000000	[s] Scheduled observation exposure time
ascdsver	10.4.3.1	Processing system revision	ontime	10025.400077224	Sum of GTIs [s]
caldsver	4.7.1	&#160	ontime3	10025.400077224	Sum of GTIs [s]
date	2016-04-02T15:42:00	Date and time of file creation	ontime5	10025.400077224	Sum of GTIs [s]
revision	1	Processing version of data	ontime6	10025.400077224	Sum of GTIs [s]
			ontime7	10025.400077224	Sum of GTIs [s]
			ontime8	10025.400077224	Sum of GTIs [s]
			l1events	394930	Number of level 1 events

### 2.1.4 Events

	ccd 3	ccd 5	ccd 6	ccd 7	ccd 8
level 1 events	60668	100554	70443	81649	81616
rejected events	54267	52386	63227	47279	62693
rejected %	89%	52%	89%	57%	76%

	ccd 3	ccd 5	ccd 6	ccd 7	ccd 8
grade 0 events	2190	4000	2244	2722	5342
	3%	3%	3%	3%	6%
grade 1 events	37	341	30	107	59
	0%	0%	0%	0%	0%
grade 2 events	1414	14677	1821	7317	4680
	2%	14%	2%	8%	5%
grade 3 events	638	1368	645	2520	1900
	1%	1%	0%	3%	2%
grade 4 events	722	1317	639	2459	1774
	1%	1%	0%	3%	2%
grade 5 events	2988	6615	2825	7673	4338
	4%	6%	4%	9%	5%
grade 6 events	1442	26822	1867	19366	5235
	2%	26%	2%	23%	6%
grade 7 events	51237	45414	60372	39485	58288
	84%	45%	85%	48%	71%

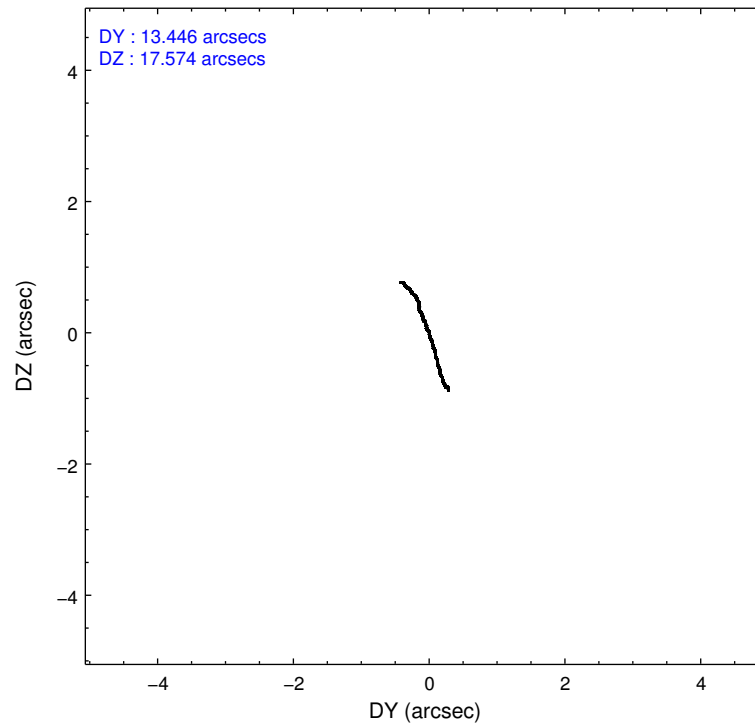
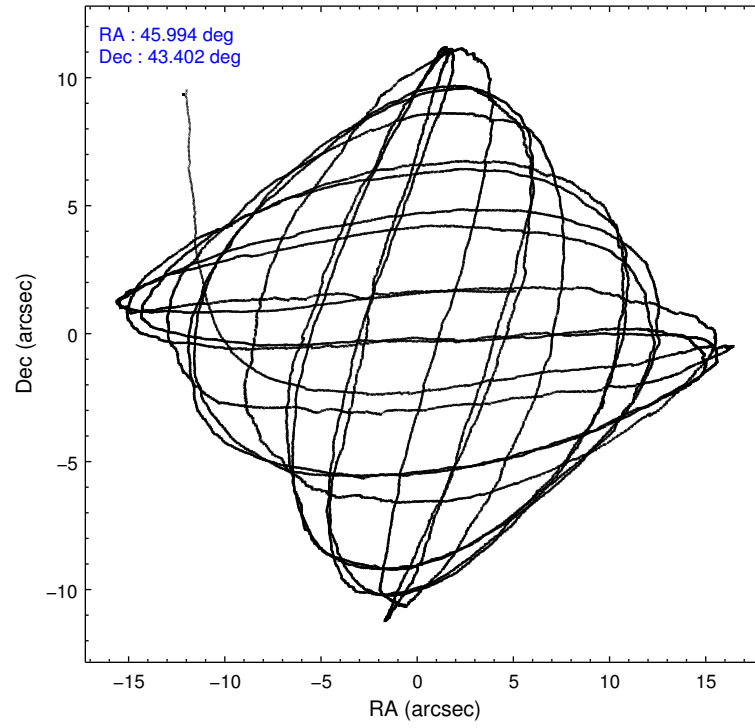


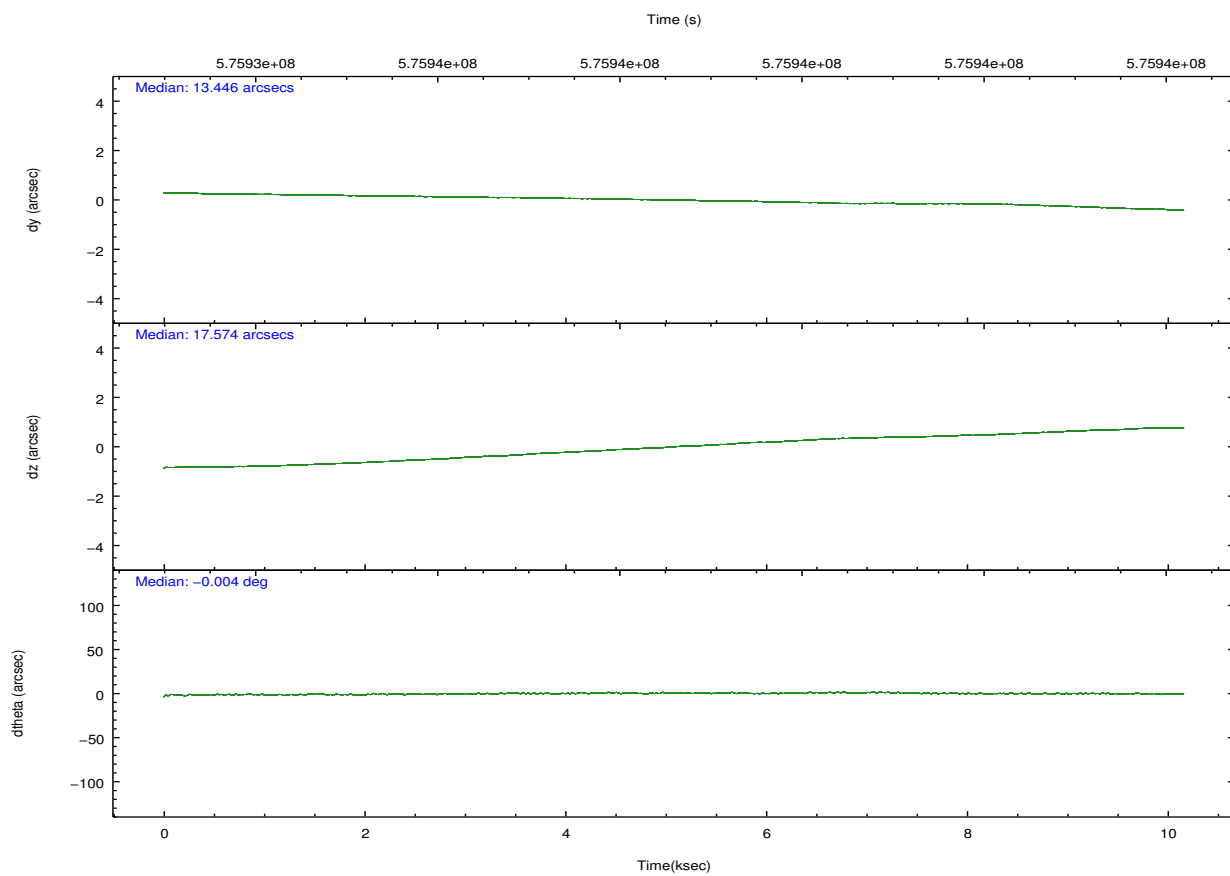
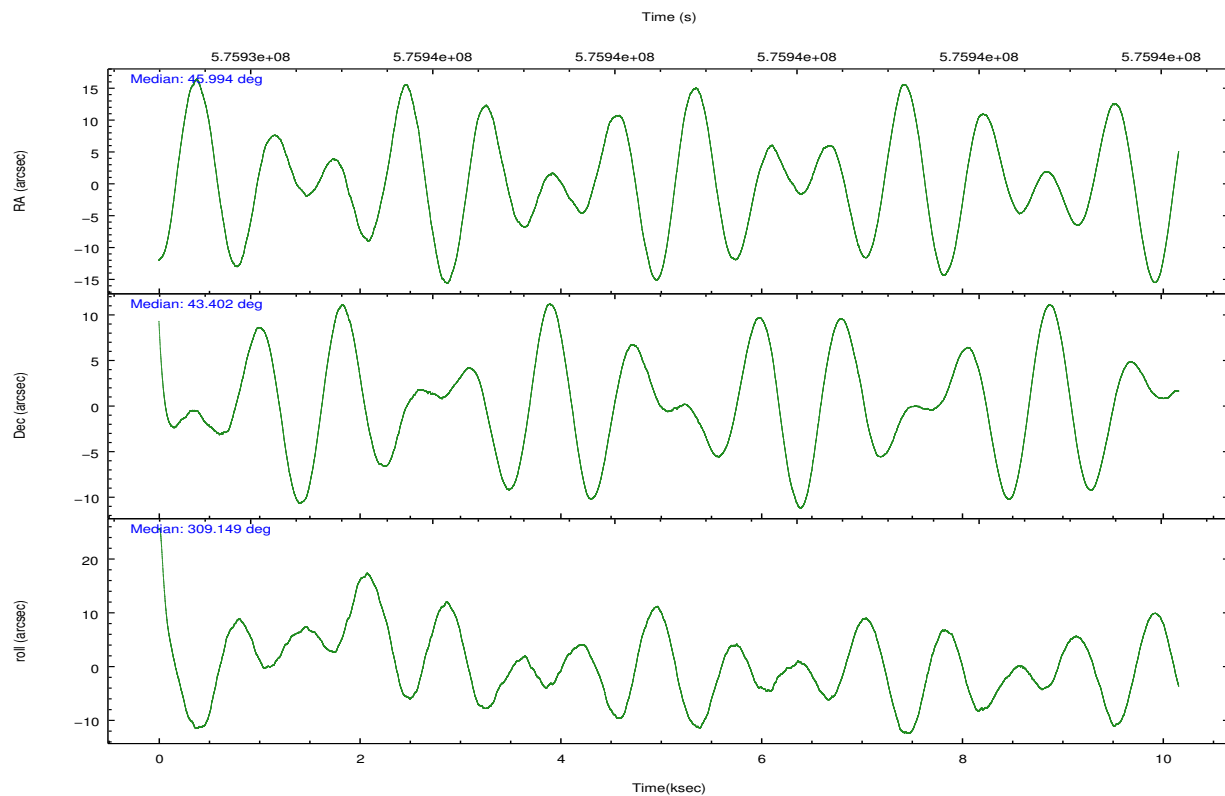
## 2.2 Compared Parameters

Parameter	Planned	Actual
Instrument	ACIS	ACIS
Detector	ACIS-35678	ACIS-35678
Grating	NONE	NONE
Data mode	FAINT	FAINT
Observation mode	POINTING	POINTING
[deg] Pointing RA	45.958593	45.99403879083907
[deg] Pointing Dec	43.411387	43.4019588786268
[deg] Pointing Roll	309.021984	309.154268168087
[mm] SIM focus pos	-0.684267	-0.6828225247311905
[mm] SIM defocus	0	0.001444936568705701
[mm] SIM translation stage pos	-190.132523	-190.1425803651734
[mm] SIM translation stage offset	0	0.01005778216563158
[s] Observation start time (MET)	575933657.184000	575932354.5897501
Observation start date	2016-04-01T21:33:09	2016-04-01T21:12:34
[s] Observation end time (MET)	575943657.184000	575944989.76548
Observation end date	2016-04-02T00:19:49	2016-04-02T00:43:09
Read mode	TIMED	TIMED

Parameter	Planned	Actual
Obspar format version number	7	7
Obspar file type	PREDICTED	ACTUAL
Obspar update status	NONE	UPDATED
CCD I0 on	N	N
CCD I1 on	N	N
CCD I2 on	N	N
CCD I3 on	O1	Y
CCD S0 on	N	N
CCD S1 on	Y	Y
CCD S2 on	Y	Y
CCD S3 on	Y	Y
CCD S4 on	Y	Y
CCD S5 on	N	N
Number of optional ACIS chips dropped	0	0
On-chip summing requested	N	N
Subarray requested	NONE	NONE
Alternating exposures requested	N	N
[s] Primary exposure time	0.000000	3.1

## 2.3 Aspect



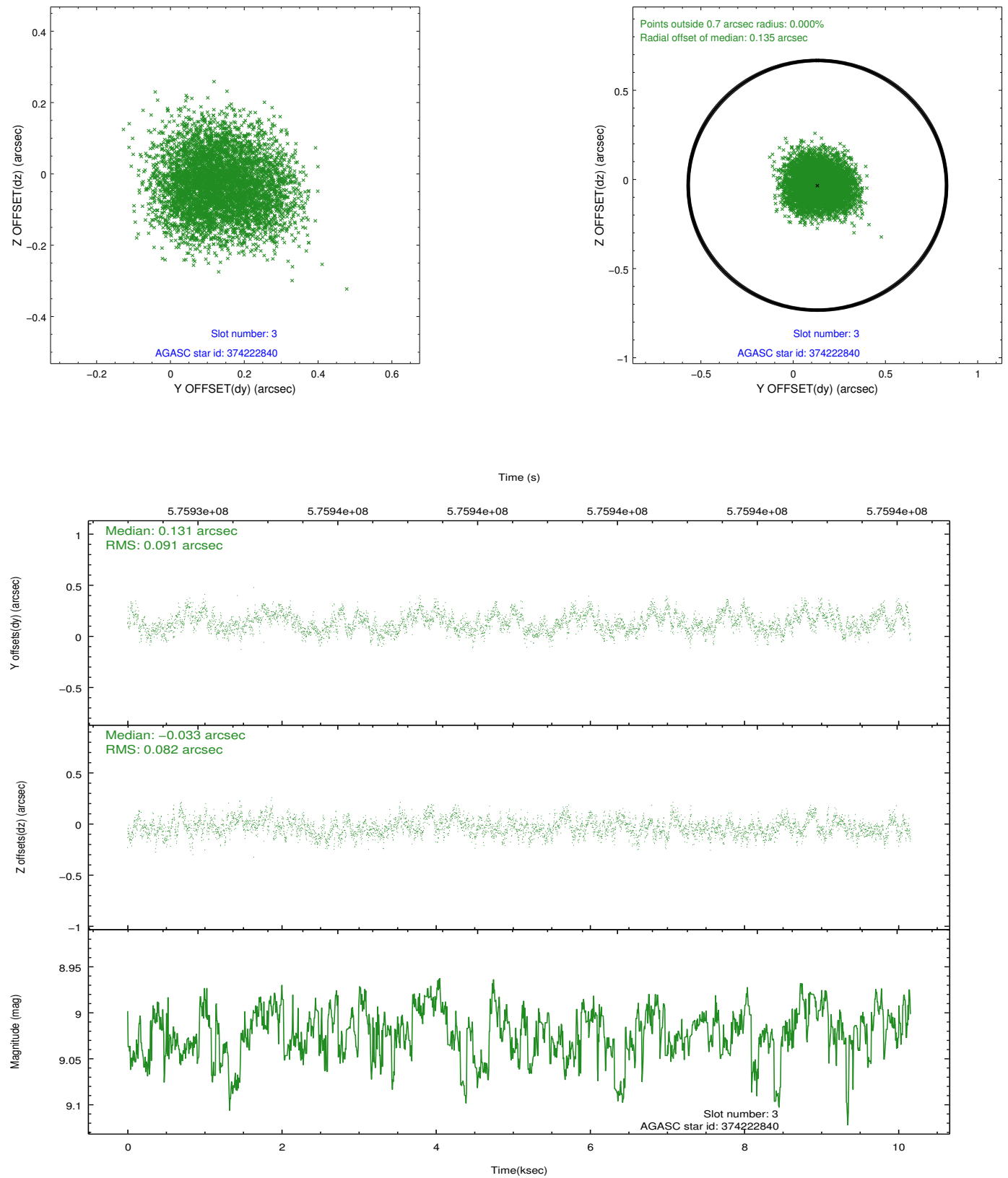


### Slot Statistics

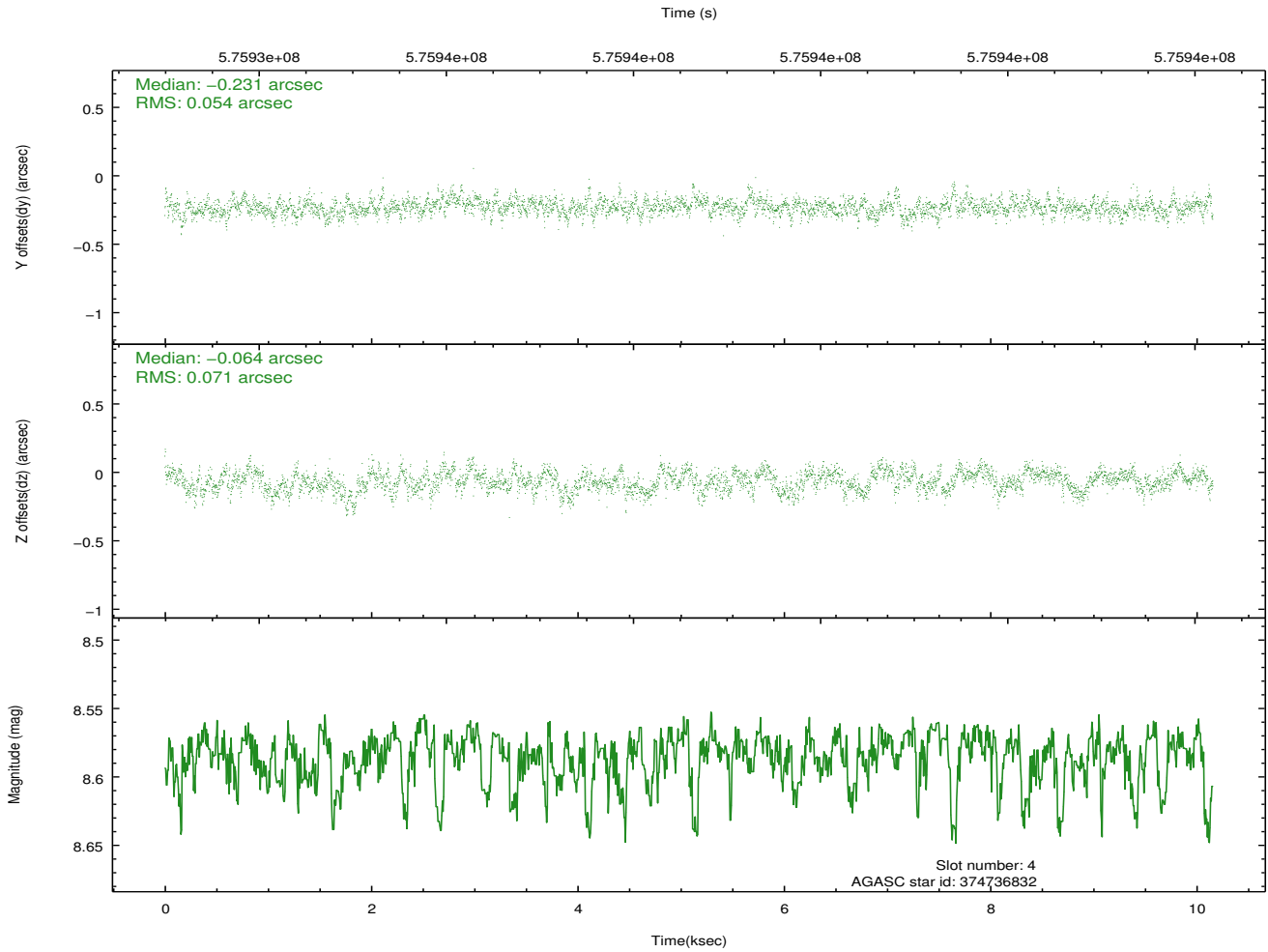
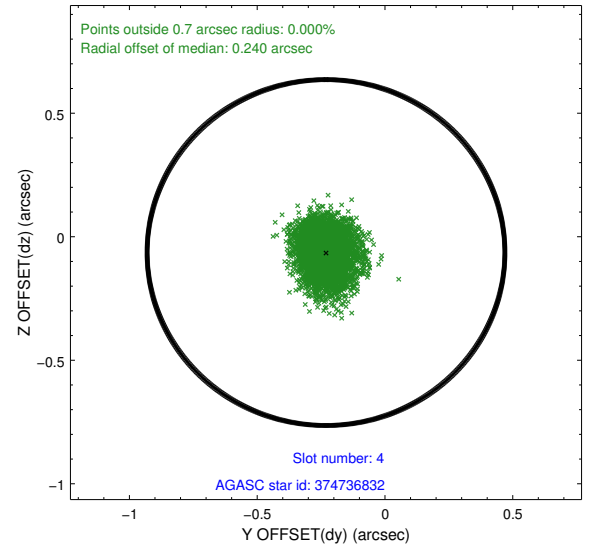
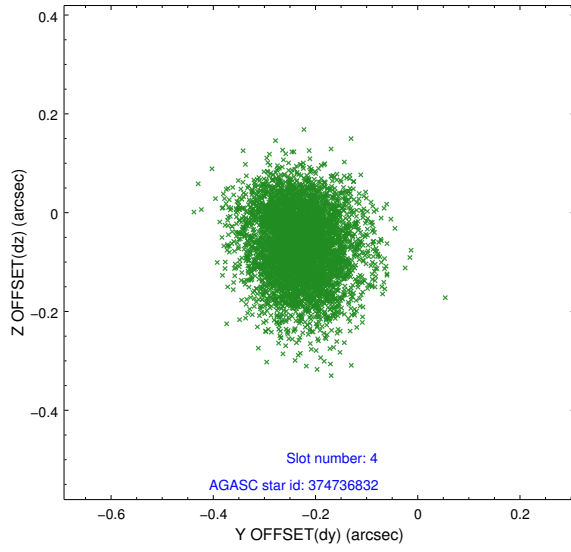
slot	status	used	id	mag	n_pts	med_dy	med_dz	dr1	dr2	ra	dec	mean_y	mean_z
0	FID		ACIS-S-2	7.12	2477	-0.132	-0.125	0.019	0.032	0.000000	0.000000	-766.49	-1739.05
1	FID		ACIS-S-4	7.22	2478	0.418	0.097	0.013	0.020	0.000000	0.000000	2147.10	169.11
2	FID		ACIS-S-5	7.25	2478	-0.316	0.036	0.017	0.028	0.000000	0.000000	-1818.85	163.30
3	GUIDE	used	374222840	9.02	4953	0.131	-0.033	0.134	0.205	45.739396	42.776130	1412.16	-1889.06
4	GUIDE	used	374736832	8.58	4954	-0.231	-0.064	0.095	0.155	46.013368	44.112951	-1872.83	1699.94
5	GUIDE	used	374745024	9.08	4954	-0.070	0.295	0.146	0.218	45.391856	43.879316	-2238.62	-78.02
6	GUIDE	used	374751720	7.75	4955	0.161	-0.019	0.093	0.150	45.466172	43.299428	-501.81	-1253.49
7	GUIDE	used	374749856	8.20	4955	0.004	-0.173	0.081	0.133	46.660139	43.259923	1575.83	1090.49

## 2.4 Star Slots

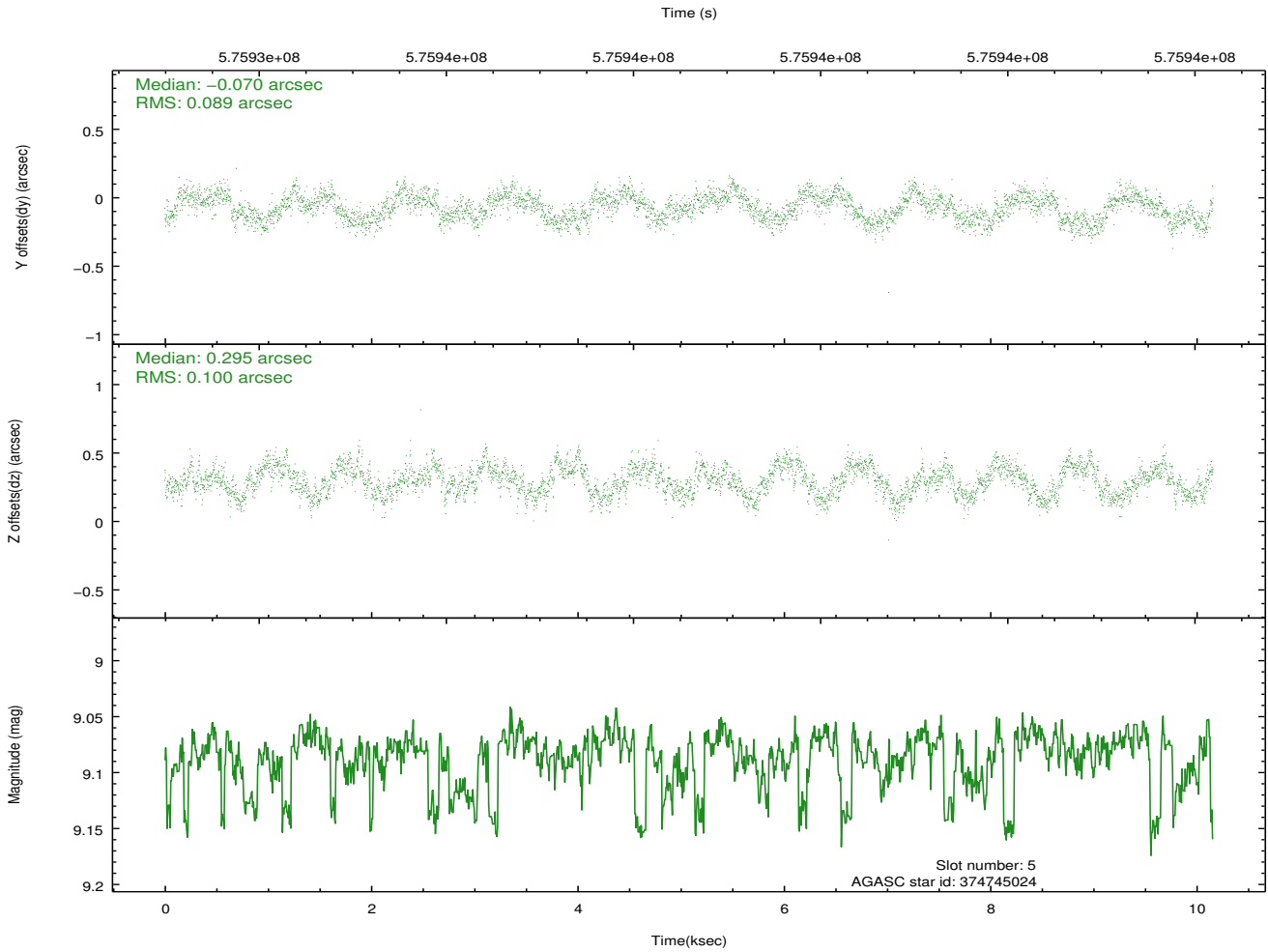
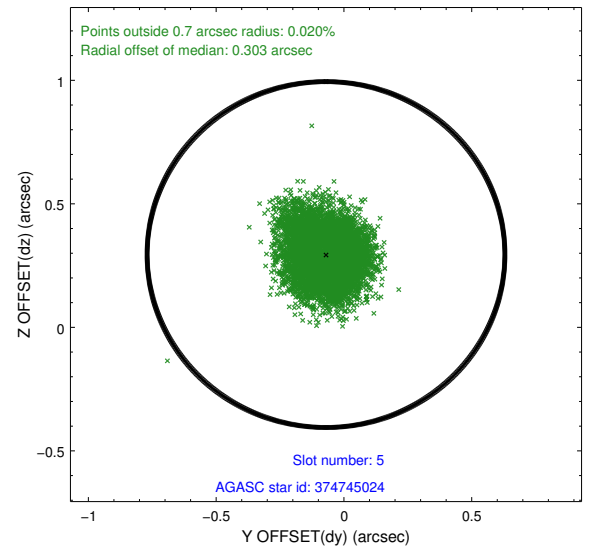
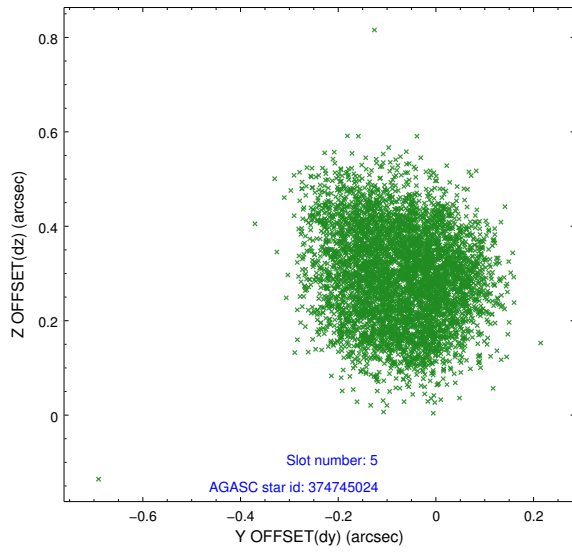
### 2.4.1 Slot 3



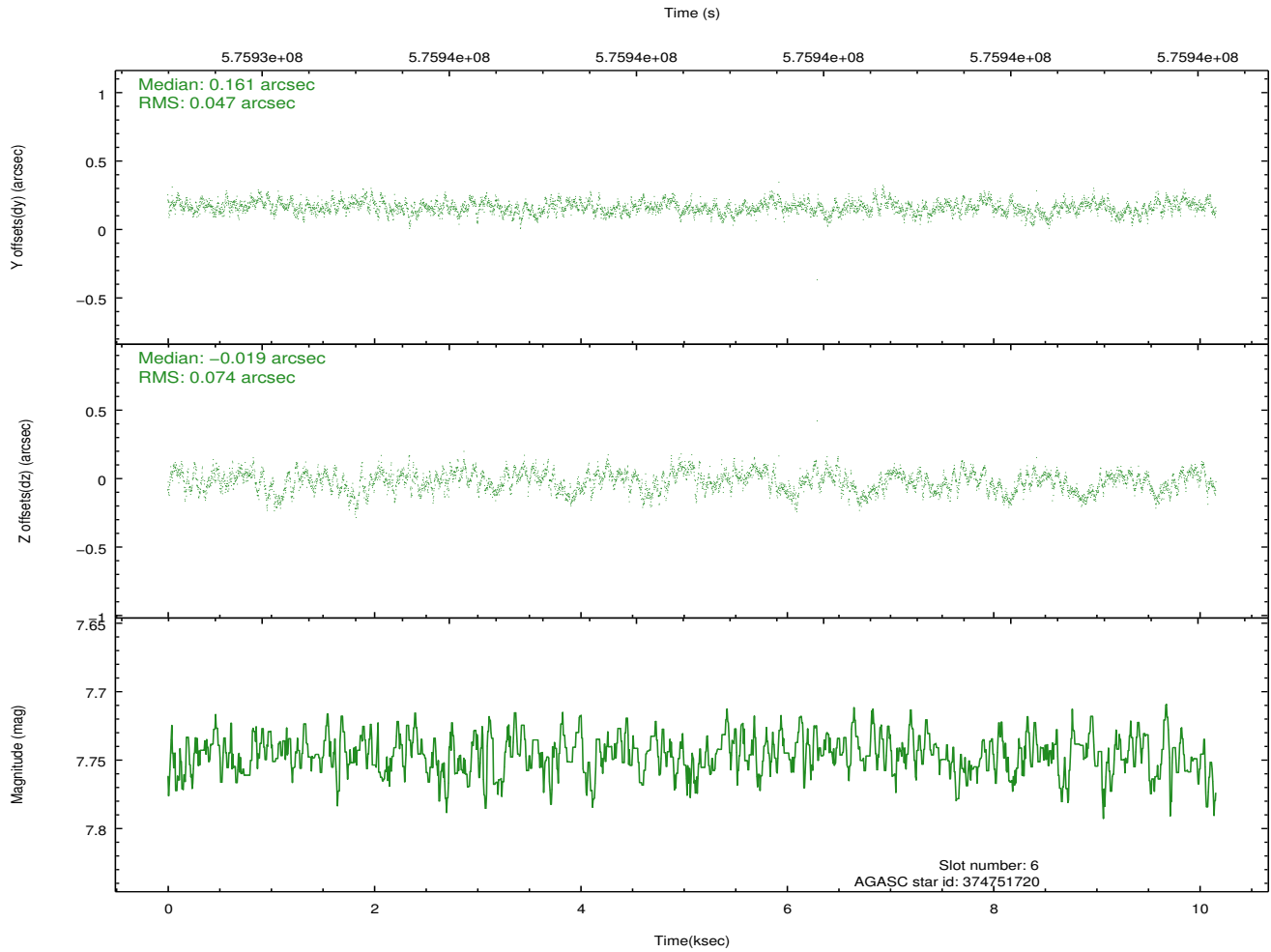
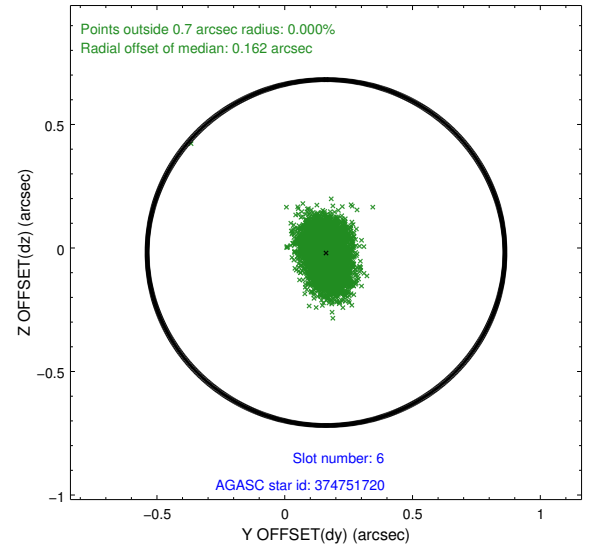
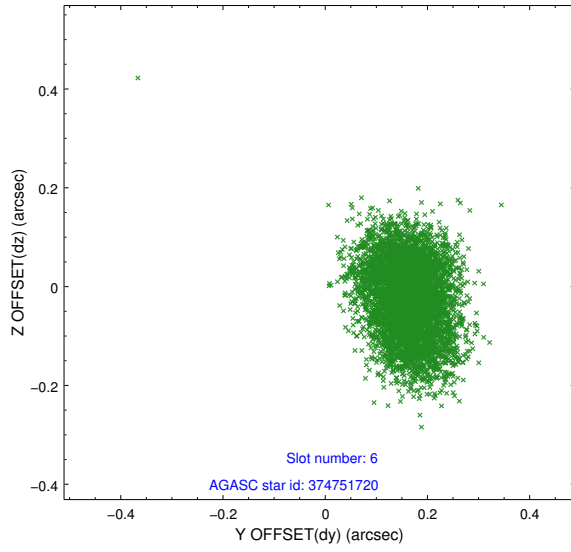
## 2.4.2 Slot 4



### 2.4.3 Slot 5

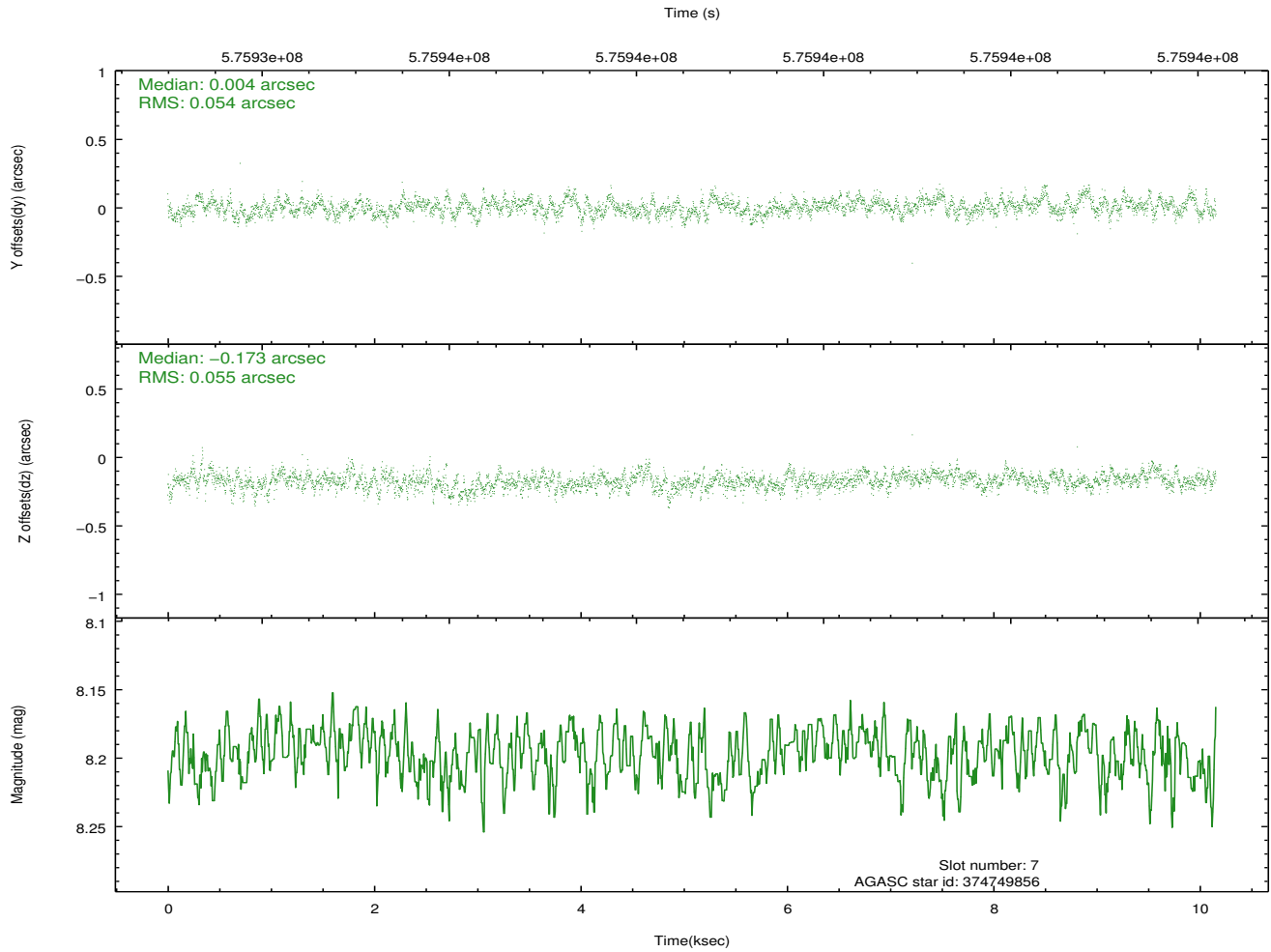
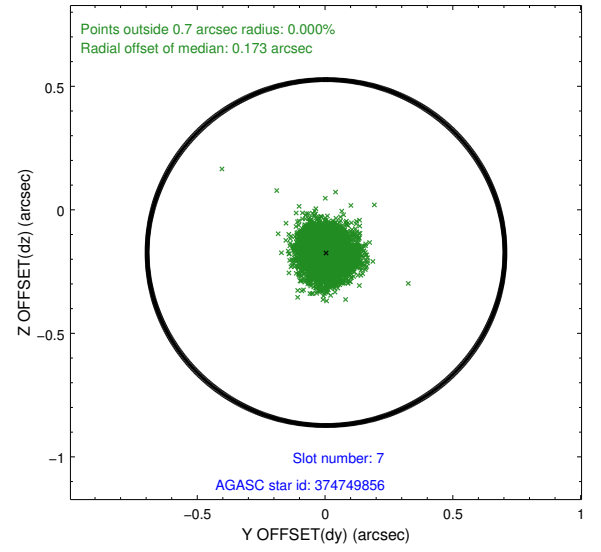
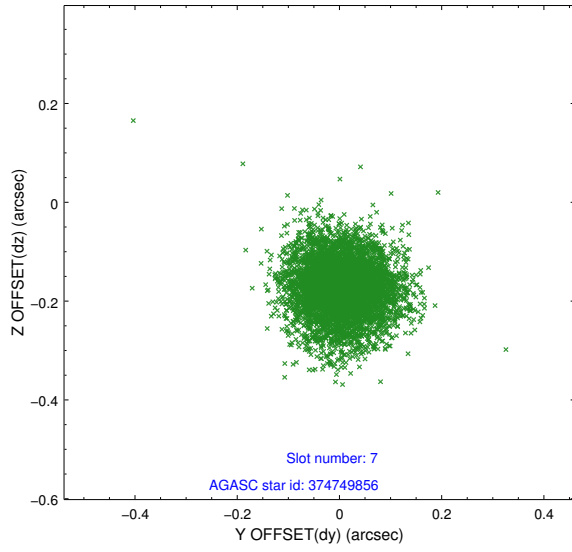


## 2.4.4 Slot 6



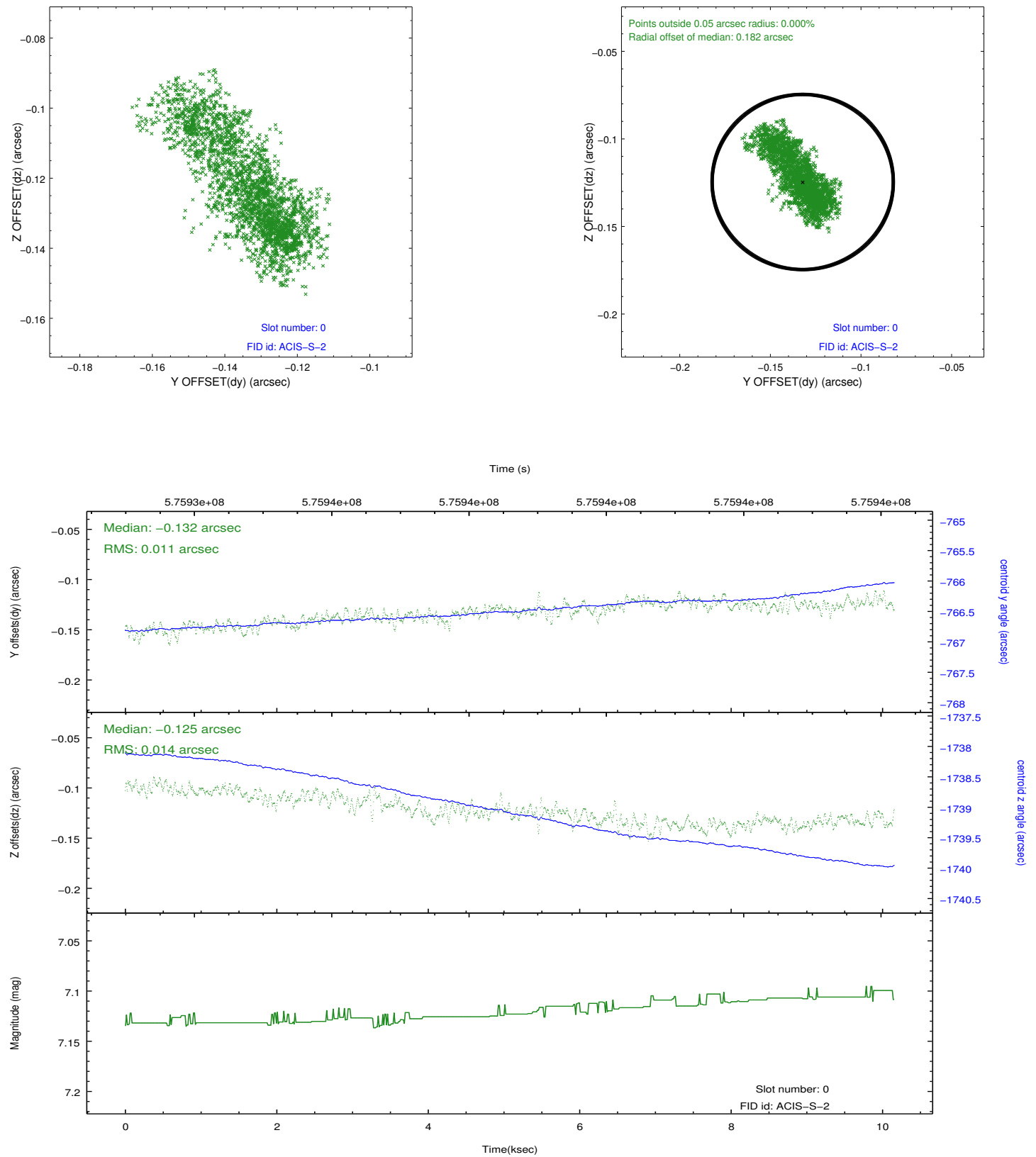


## 2.4.5 Slot 7

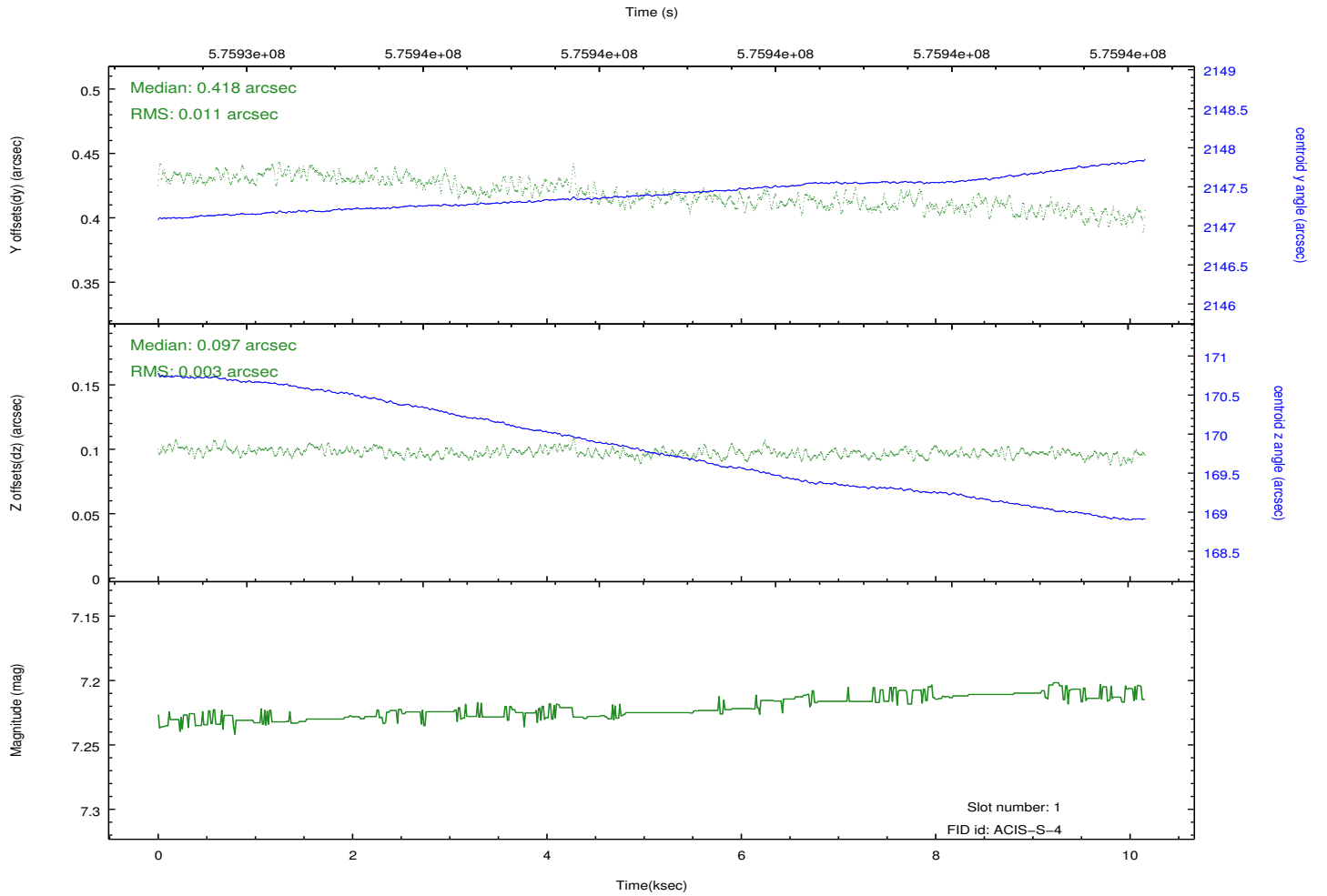
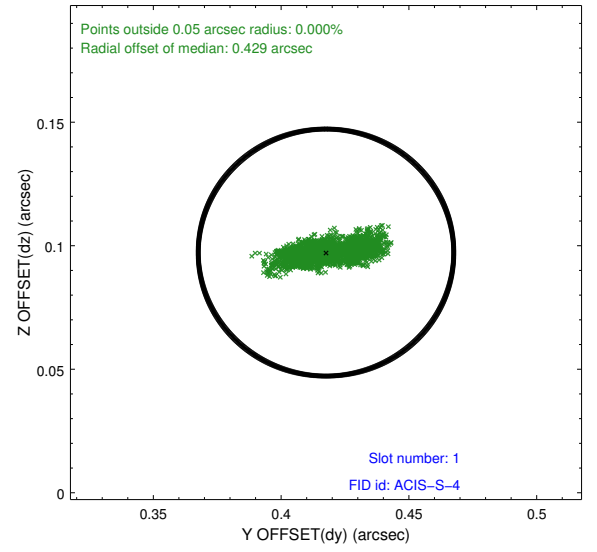
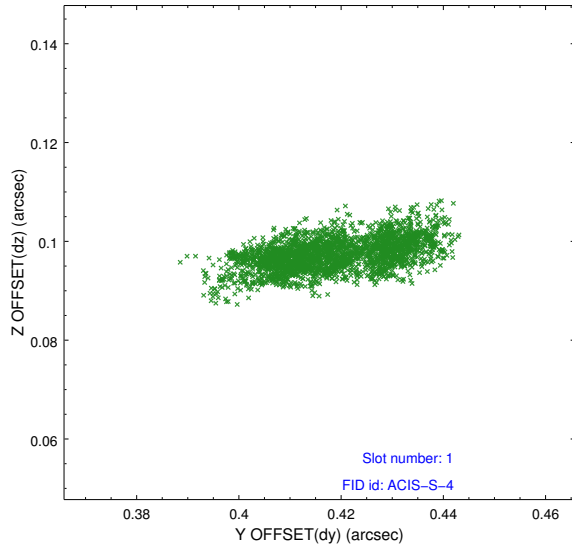


## 2.5 FID Slots

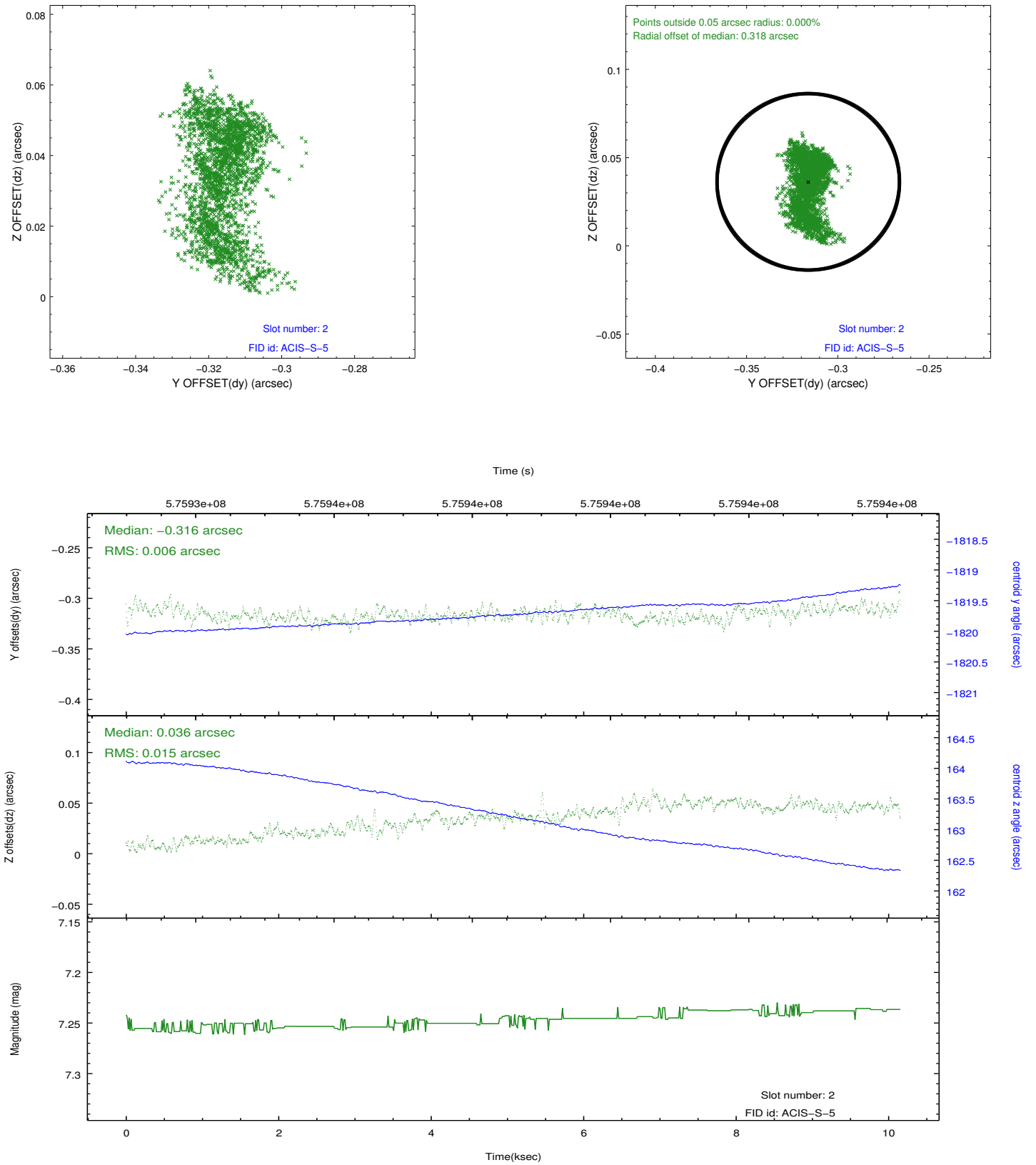
### 2.5.1 Slot 0



## 2.5.2 Slot 1



### 2.5.3 Slot 2



## **A Summary**

### **A.1 Status**

V&V Scientist	Joy Nichols
V&V Date (YYYY-MM-DD)	2016.04.04
V&V Edition	1
V&V Disposition and Status	OK
V&V Charge Time	10.025400077224

### **A.2 Comments**