

V&V Reference Report

L2 ASCDS Version : 10.4.3.1

Observation 17887 - L2 Version 1
Chandra X-Ray Center

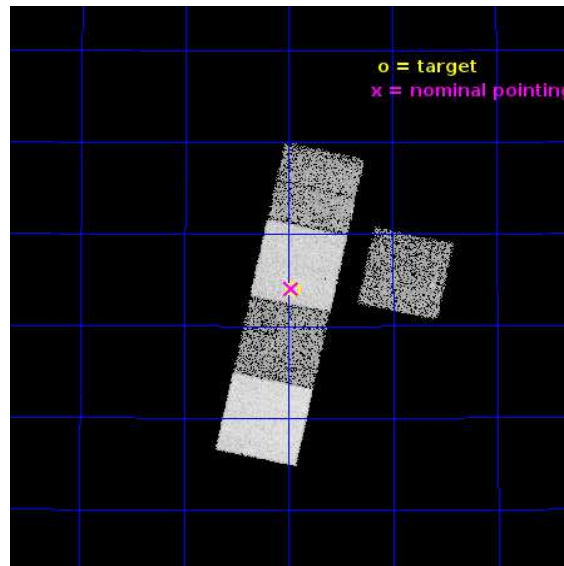
L2 Processing Date : Feb 2 2016

Contents

1	Front	2
2	OBI	3
2.1	OBI	3
2.1.1	Images	3
2.1.2	Bias	3
2.1.3	Parameters	4
2.1.4	Events	4
2.2	Compared Parameters	5
2.3	Aspect	6
2.4	Star Slots	9
2.4.1	Slot 3	9
2.4.2	Slot 4	10
2.4.3	Slot 5	11
2.4.4	Slot 6	12
2.4.5	Slot 7	13
2.5	FID Slots	14
2.5.1	Slot 0	14
2.5.2	Slot 1	15
2.5.3	Slot 2	16
A	Summary	17
A.1	Status	17
A.2	Comments	17

1 Front

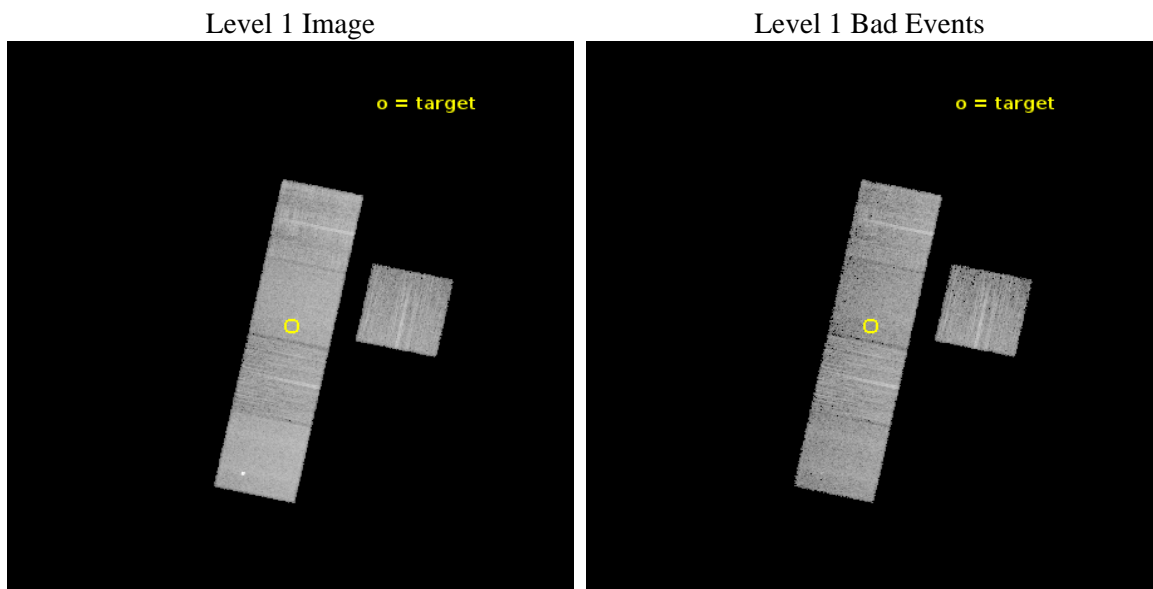
seq_num	502506	Sequence number
obs_id	17887	Observation id
title	Probing the Energetics and Environments of Hydrogen-poor Core-Collapse SNe	Proposal title
observer	Dr Raffaella Margutti	Principal investigator
object	SN2016G	Source name
dtcycle	0	
cycle	P	events from which exps? Prim/Second/Both
ra_targ	45.990583	Observer's specified target RA [deg]
dec_targ	43.400972	Observer's specified target Dec [deg]
ra_nom	45.99391912206	Nominal RA [deg]
dec_nom	43.401326420323	Nominal Dec [deg]
roll_nom	282.11647736117	Nominal Roll [deg]
revision	1	Processing version of data
ontime	10056.400077462	Sum of GTIs [s]
livetime	9925.0058070361	Livetime [s]
ontime3	10056.400077462	Sum of GTIs [s]
ontime5	10056.400077462	Sum of GTIs [s]
ontime6	10056.400077462	Sum of GTIs [s]
ontime7	10056.400077462	Sum of GTIs [s]
ontime8	10056.400077462	Sum of GTIs [s]
l2events	96723	Number of level 2 events



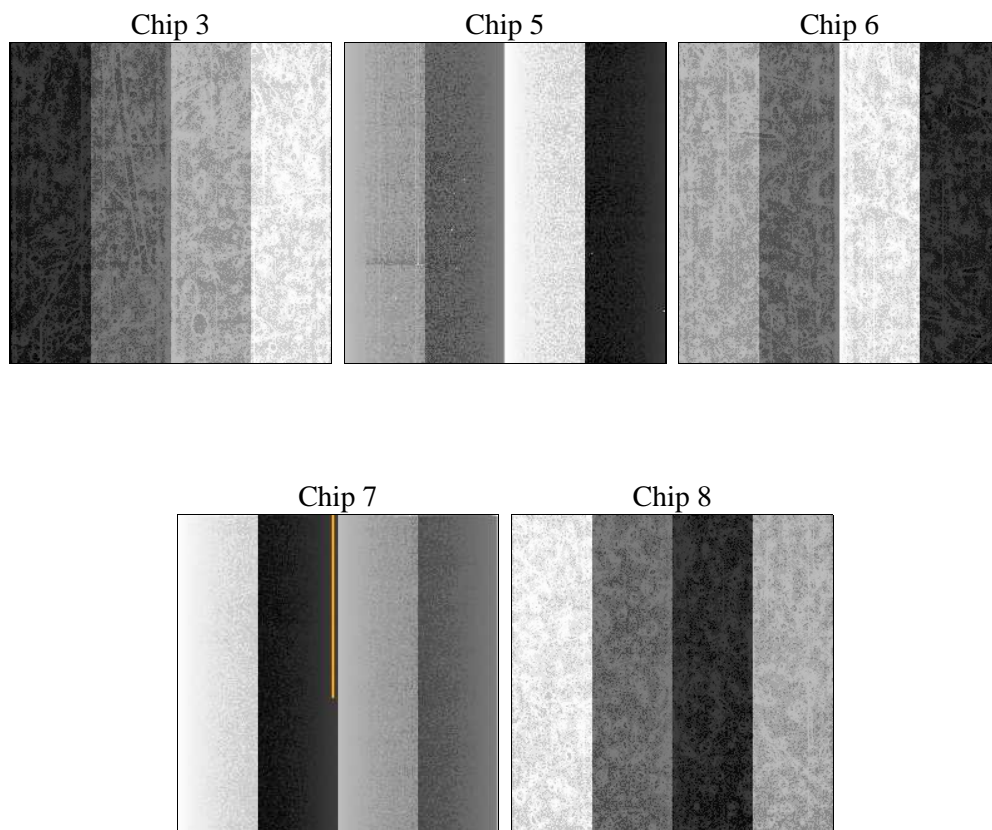
2 OBI

2.1 OBI

2.1.1 Images



2.1.2 Bias



2.1.3 Parameters

obi_num	0	Obi number	sched_exp_time	10000.000000	[s] Scheduled observation exposure time
ascdsver	10.4.3.1	Processing system revision	ontime	10056.400077462	Sum of GTIs [s]
caldsver	4.7.0	 	ontime3	10056.400077462	Sum of GTIs [s]
date	2016-02-02T17:34:24	Date and time of file creation	ontime5	10056.400077462	Sum of GTIs [s]
revision	1	Processing version of data	ontime6	10056.400077462	Sum of GTIs [s]
			ontime7	10056.400077462	Sum of GTIs [s]
			ontime8	10056.400077462	Sum of GTIs [s]
			l1events	385076	Number of level 1 events

2.1.4 Events

	ccd 3	ccd 5	ccd 6	ccd 7	ccd 8
level 1 events	59760	98910	66562	80589	79255
rejected events	53436	51622	59474	46532	58758
rejected %	89%	52%	89%	57%	74%

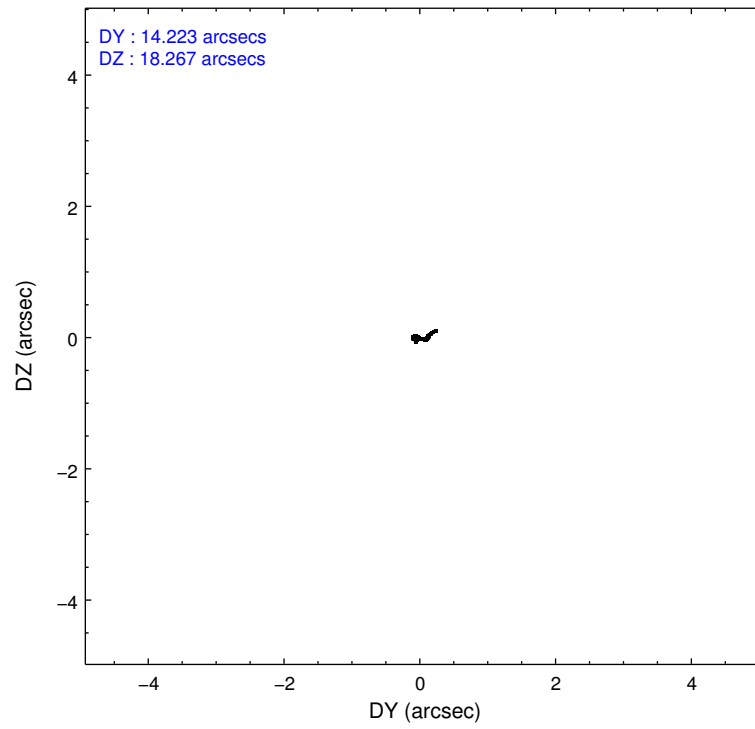
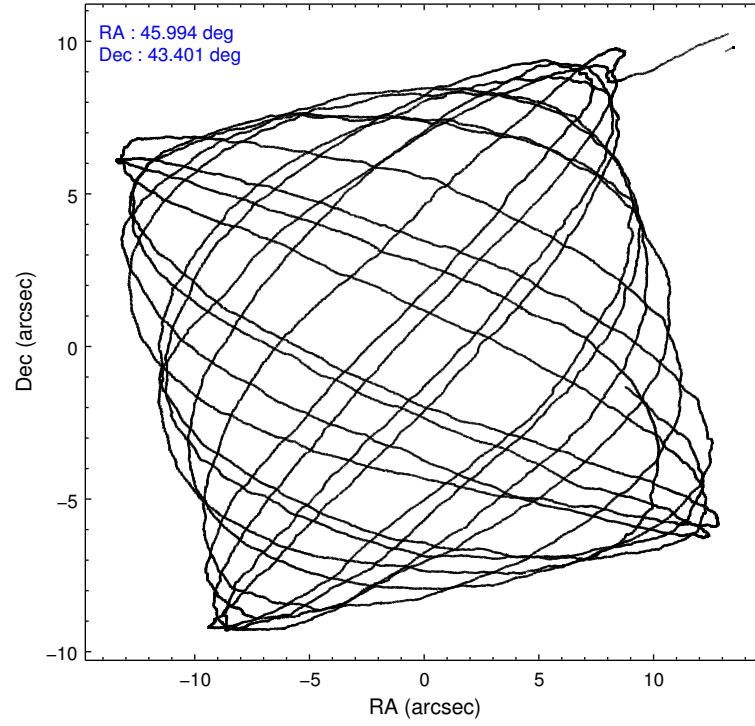
	ccd 3	ccd 5	ccd 6	ccd 7	ccd 8
grade 0 events	2204	3565	2255	2757	5762
	3%	3%	3%	3%	7%
grade 1 events	32	217	22	93	60
	0%	0%	0%	0%	0%
grade 2 events	1381	13965	1739	7187	5017
	2%	14%	2%	8%	6%
grade 3 events	687	1788	695	2591	2062
	1%	1%	1%	3%	2%
grade 4 events	720	1603	666	2555	1937
	1%	1%	1%	3%	2%
grade 5 events	3005	6300	2807	7574	4247
	5%	6%	4%	9%	5%
grade 6 events	1333	26385	1738	18974	5721
	2%	26%	2%	23%	7%
grade 7 events	50398	45087	56640	38858	54449
	84%	45%	85%	48%	68%

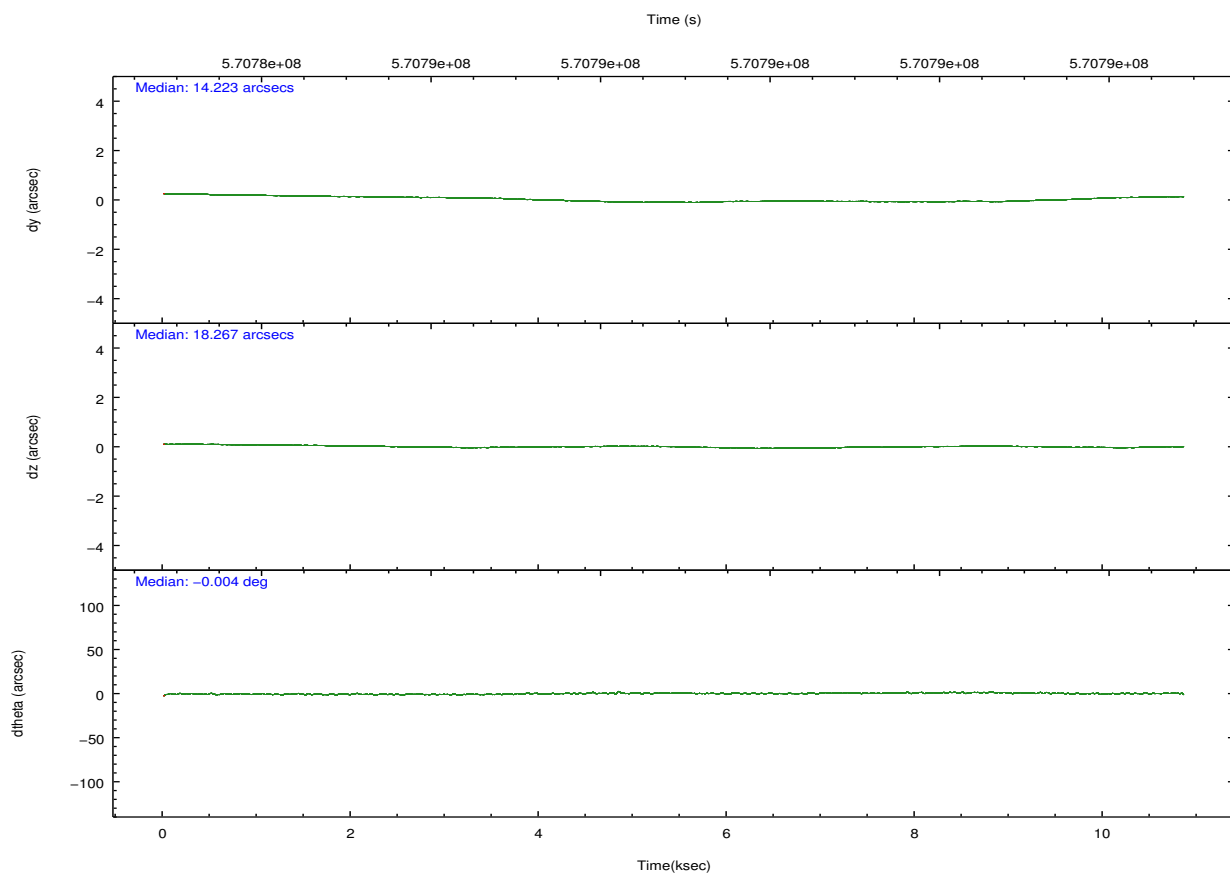
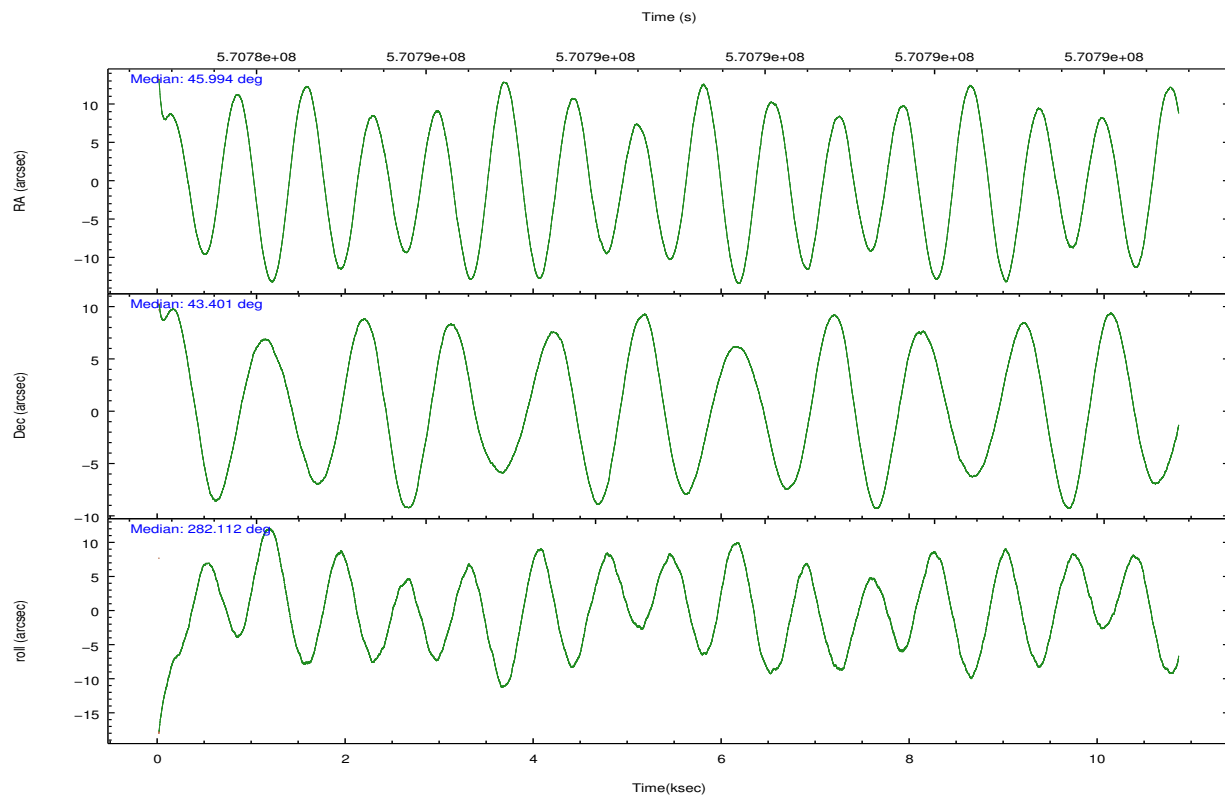
2.2 Compared Parameters

Parameter	Planned	Actual
Instrument	ACIS	ACIS
Detector	ACIS-35678	ACIS-35678
Grating	NONE	NONE
Data mode	FAINT	FAINT
Observation mode	POINTING	POINTING
[deg] Pointing RA	45.968139	45.99391912206008
[deg] Pointing Dec	43.421411	43.40132642032259
[deg] Pointing Roll	281.977571	282.1164773611656
[mm] SIM focus pos	-0.684267	-0.6828225247311905
[mm] SIM defocus	0	0.001444936568705701
[mm] SIM translation stage pos	-190.132523	-190.1400660498719
[mm] SIM translation stage offset	0	0.00754346686406393
[s] Observation start time (MET)	570784291.184000	570782653.3982199
Observation start date	2016-02-02T07:10:23	2016-02-02T06:44:13
[s] Observation end time (MET)	570794291.184000	570795112.27393
Observation end date	2016-02-02T09:57:03	2016-02-02T10:11:52
Read mode	TIMED	TIMED

Parameter	Planned	Actual
Obspar format version number	7	7
Obspar file type	PREDICTED	ACTUAL
Obspar update status	NONE	UPDATED
CCD I0 on	N	N
CCD I1 on	N	N
CCD I2 on	N	N
CCD I3 on	O1	Y
CCD S0 on	N	N
CCD S1 on	Y	Y
CCD S2 on	Y	Y
CCD S3 on	Y	Y
CCD S4 on	Y	Y
CCD S5 on	N	N
Number of optional ACIS chips dropped	0	0
On-chip summing requested	N	N
Subarray requested	NONE	NONE
Alternating exposures requested	N	N
[s] Primary exposure time	0.000000	3.1

2.3 Aspect



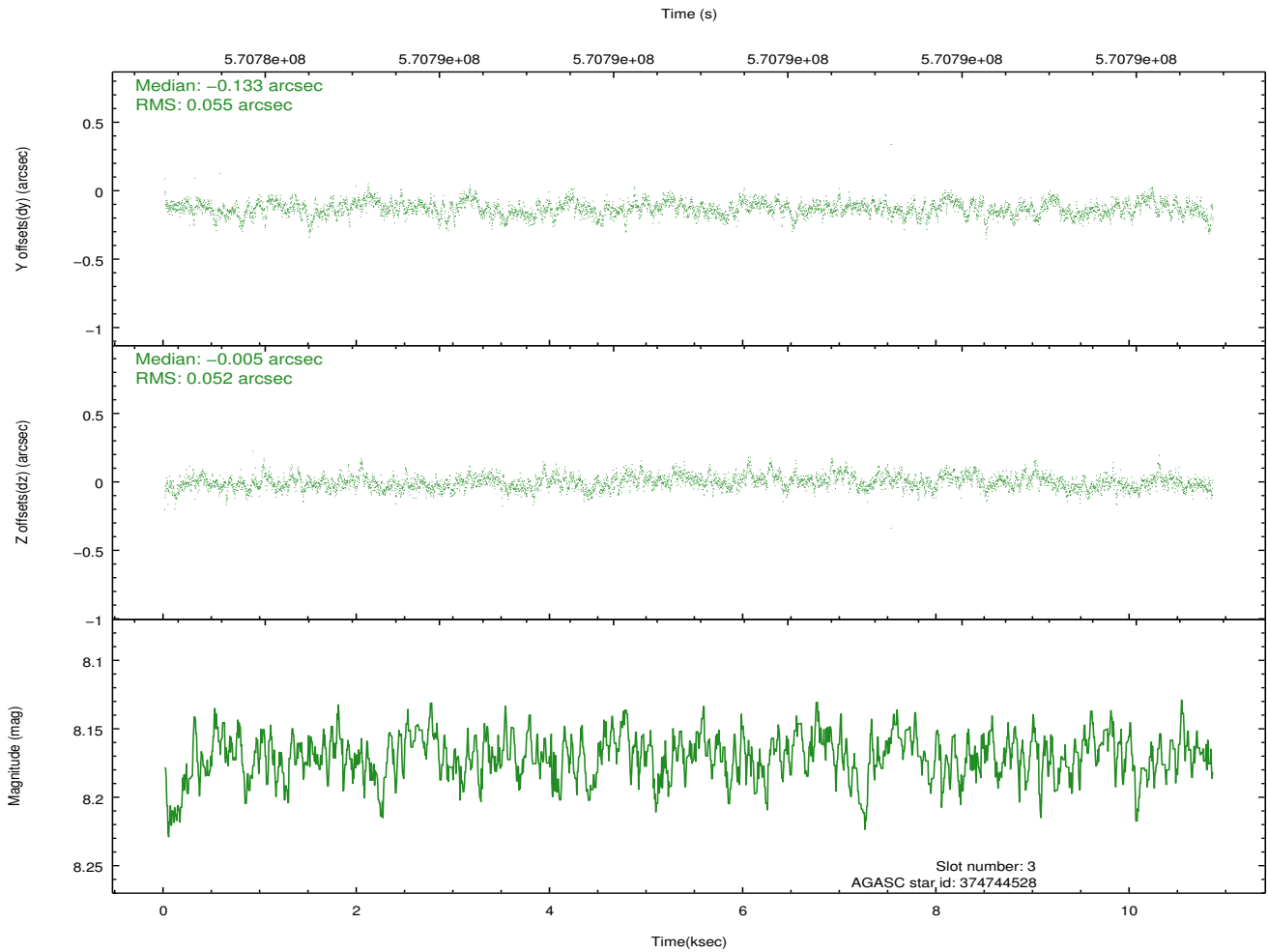
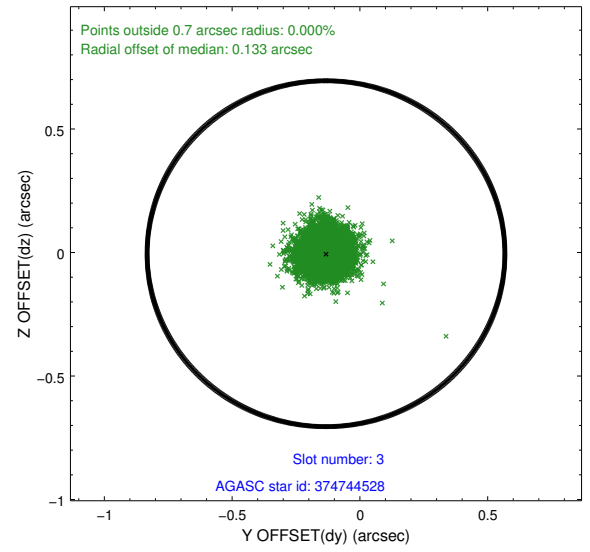
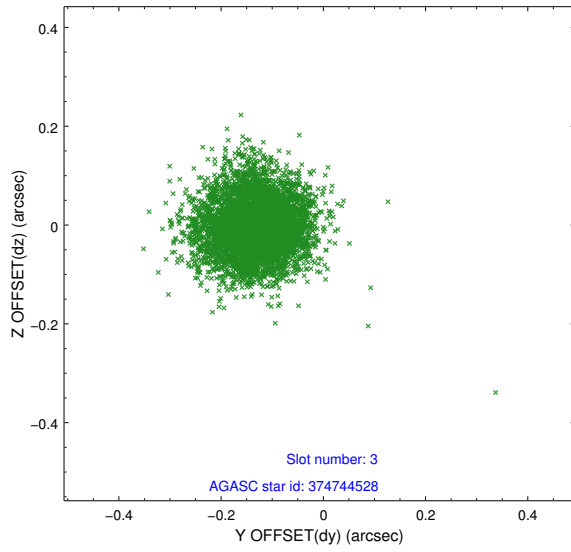


Slot Statistics

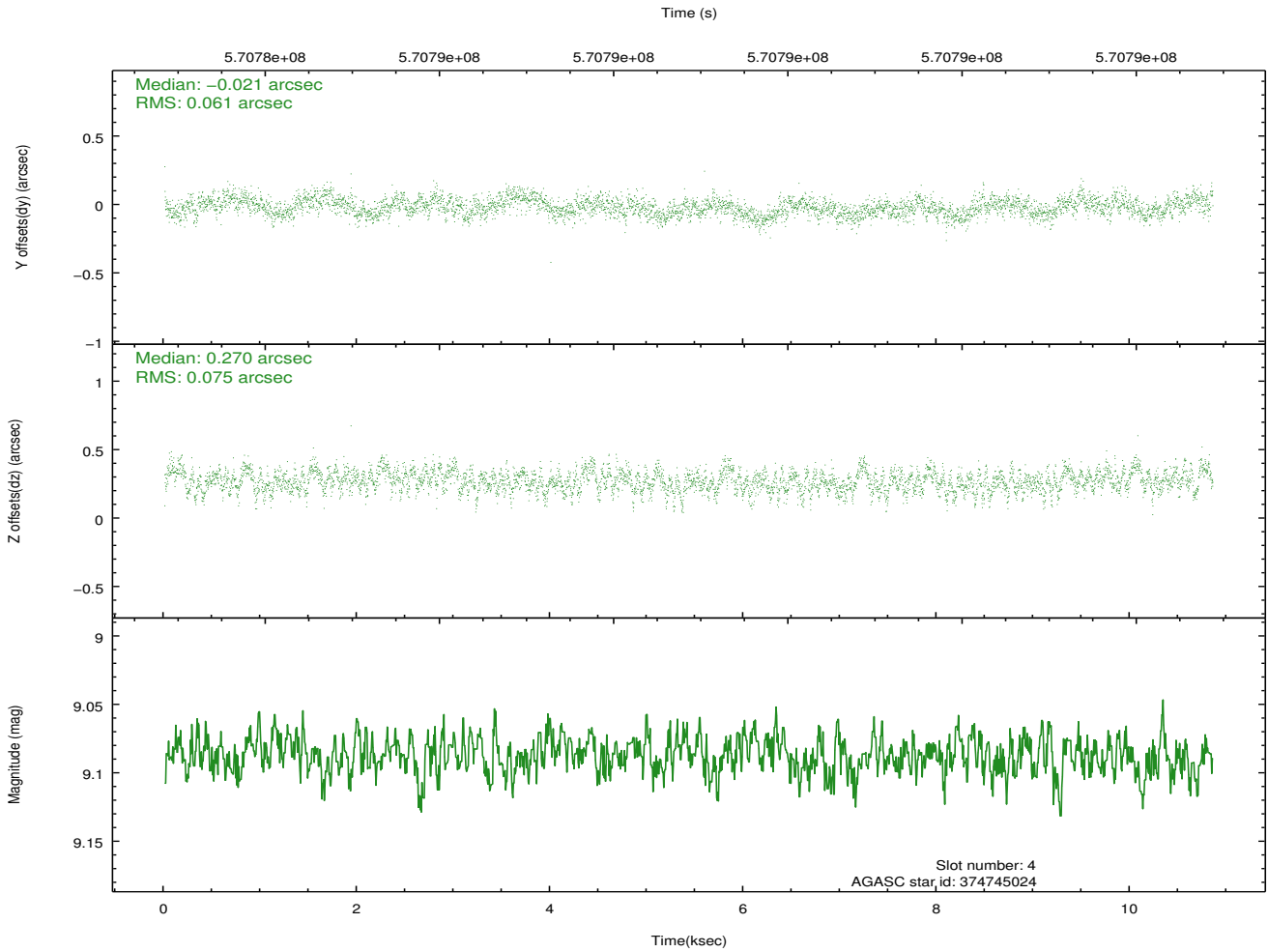
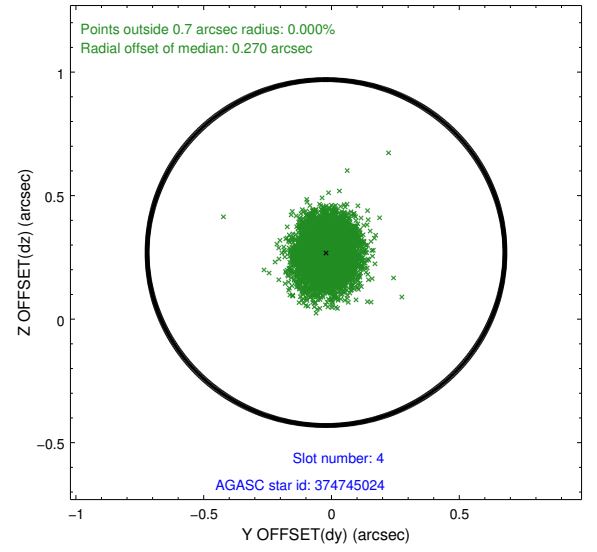
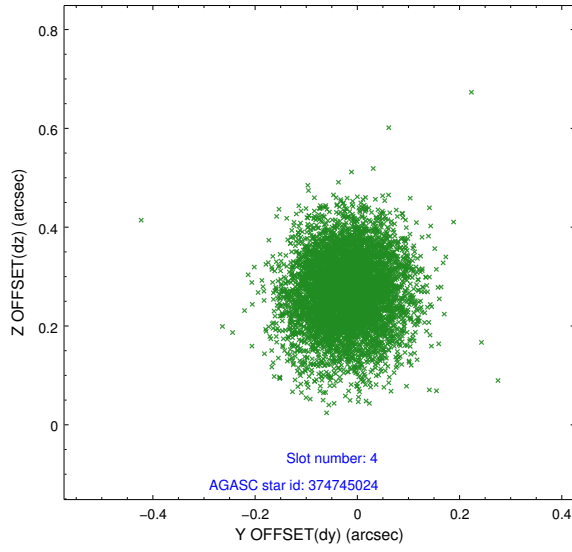
slot	status	used	id	mag	n_pts	med_dy	med_dz	dr1	dr2	ra	dec	mean_y	mean_z
0	FID		ACIS-S-2	7.12	2647	-0.144	-0.124	0.012	0.017	0.000000	0.000000	-767.36	-1739.86
1	FID		ACIS-S-4	7.21	2647	0.412	0.103	0.007	0.012	0.000000	0.000000	2146.27	168.34
2	FID		ACIS-S-5	7.23	2647	-0.299	0.030	0.012	0.019	0.000000	0.000000	-1819.73	162.50
3	GUIDE	used	374744528	8.17	5290	-0.133	-0.005	0.079	0.130	46.510491	43.508066	-15.55	1451.08
4	GUIDE	used	374745024	9.09	5291	-0.021	0.270	0.102	0.166	45.391856	43.879316	-1927.56	-1119.37
5	GUIDE	used	374749856	8.20	5287	-0.146	-0.003	0.086	0.132	46.660139	43.259923	937.59	1655.43
6	GUIDE	used	374751720	7.74	5293	-0.060	-0.026	0.081	0.130	45.466172	43.299428	153.48	-1376.55
7	GUIDE	used	374215288	9.04	5285	0.359	-0.239	0.134	0.229	45.400940	42.701538	2219.72	-2005.17

2.4 Star Slots

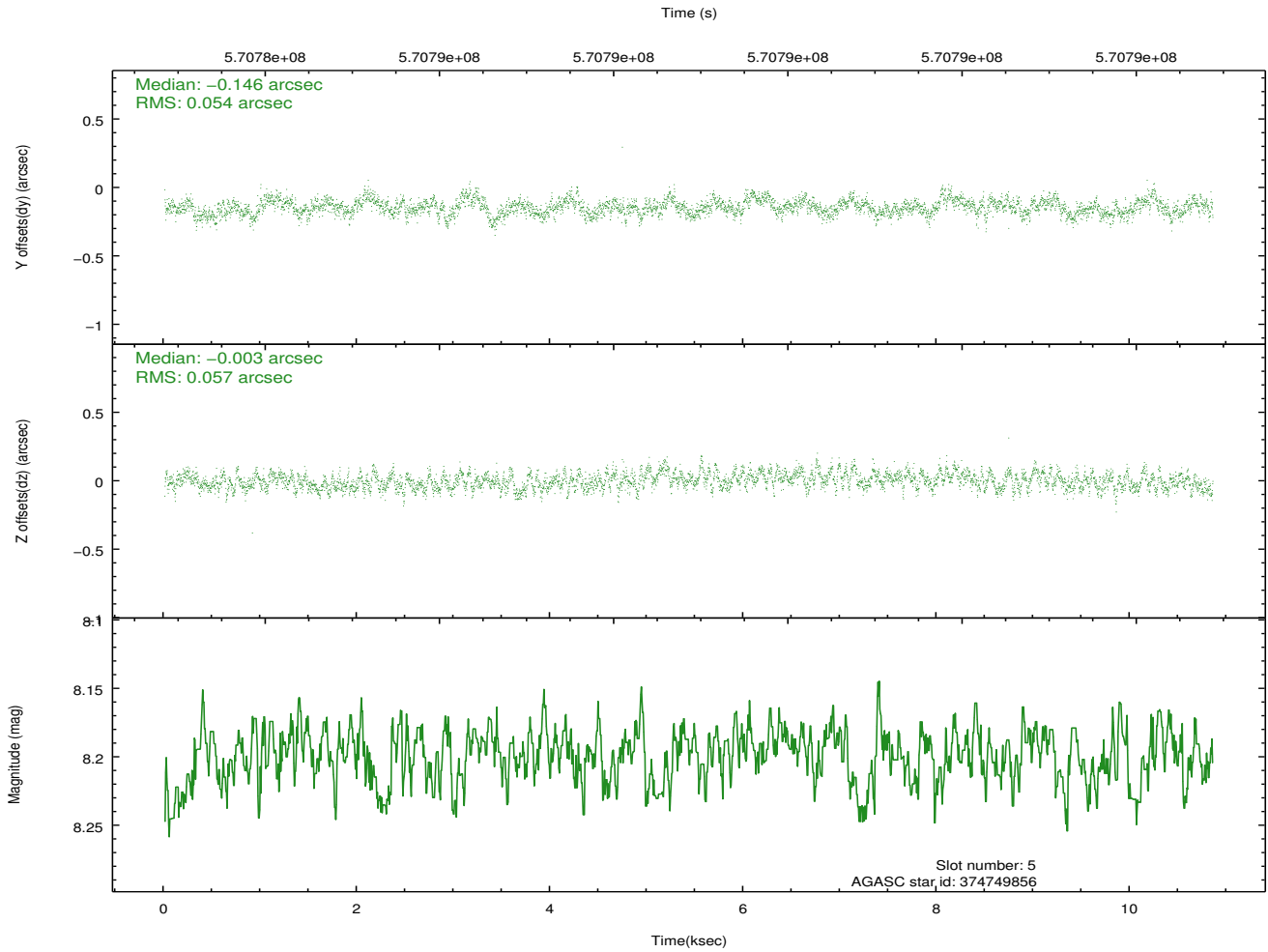
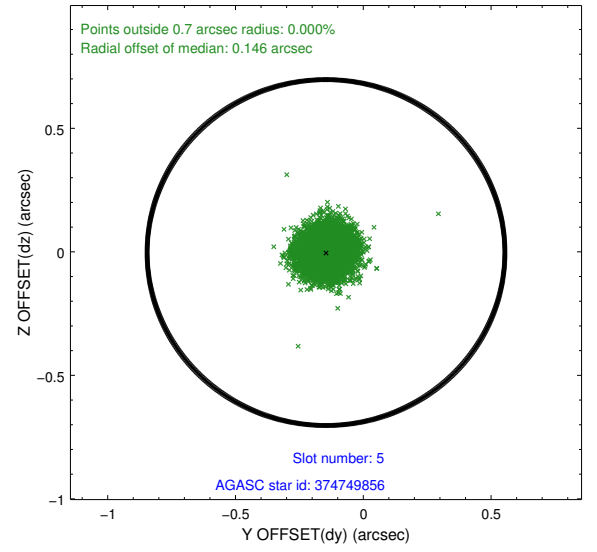
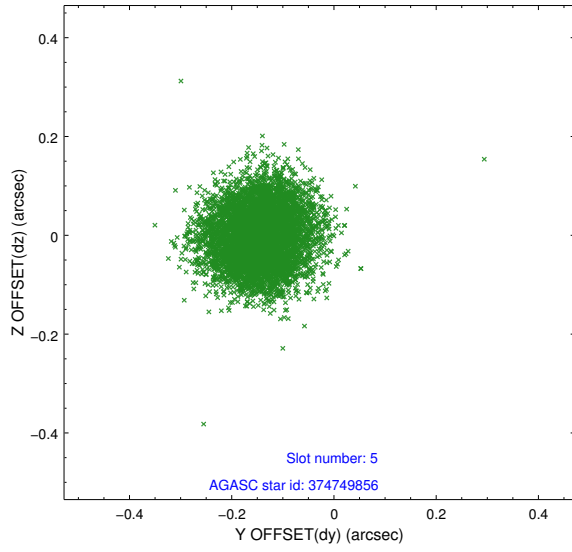
2.4.1 Slot 3



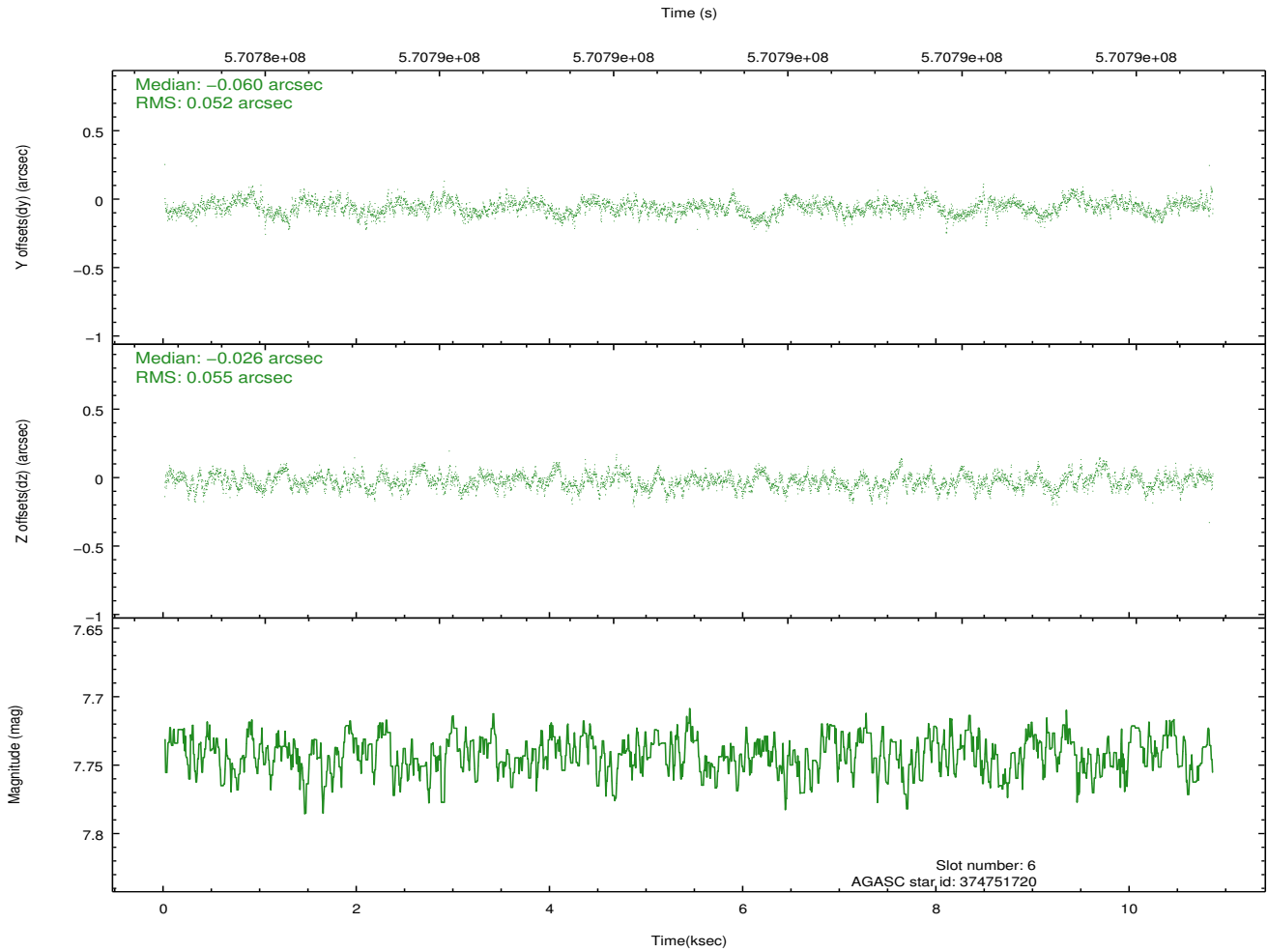
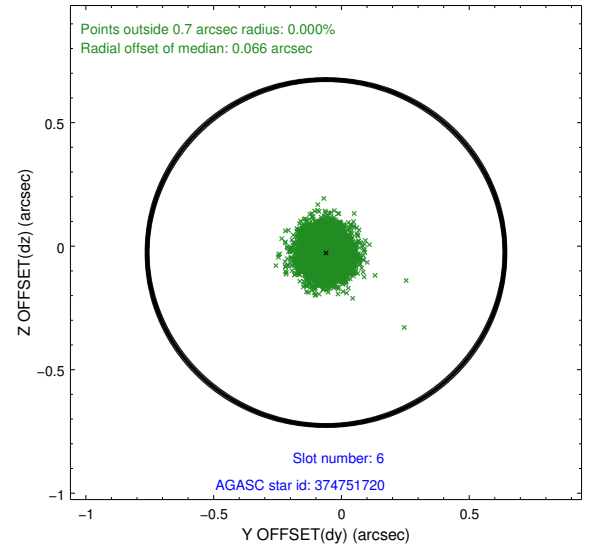
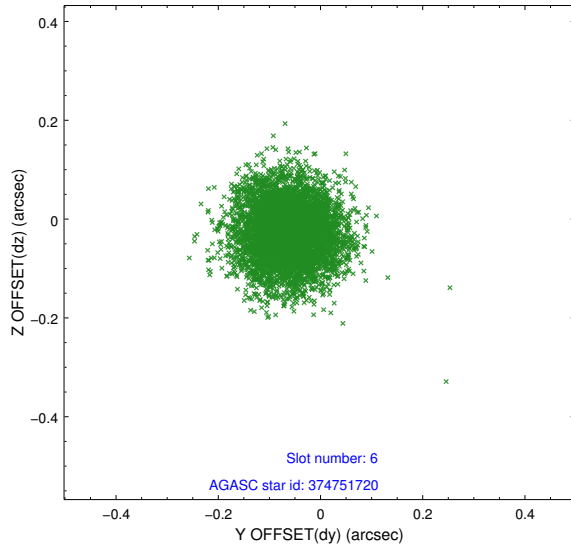
2.4.2 Slot 4



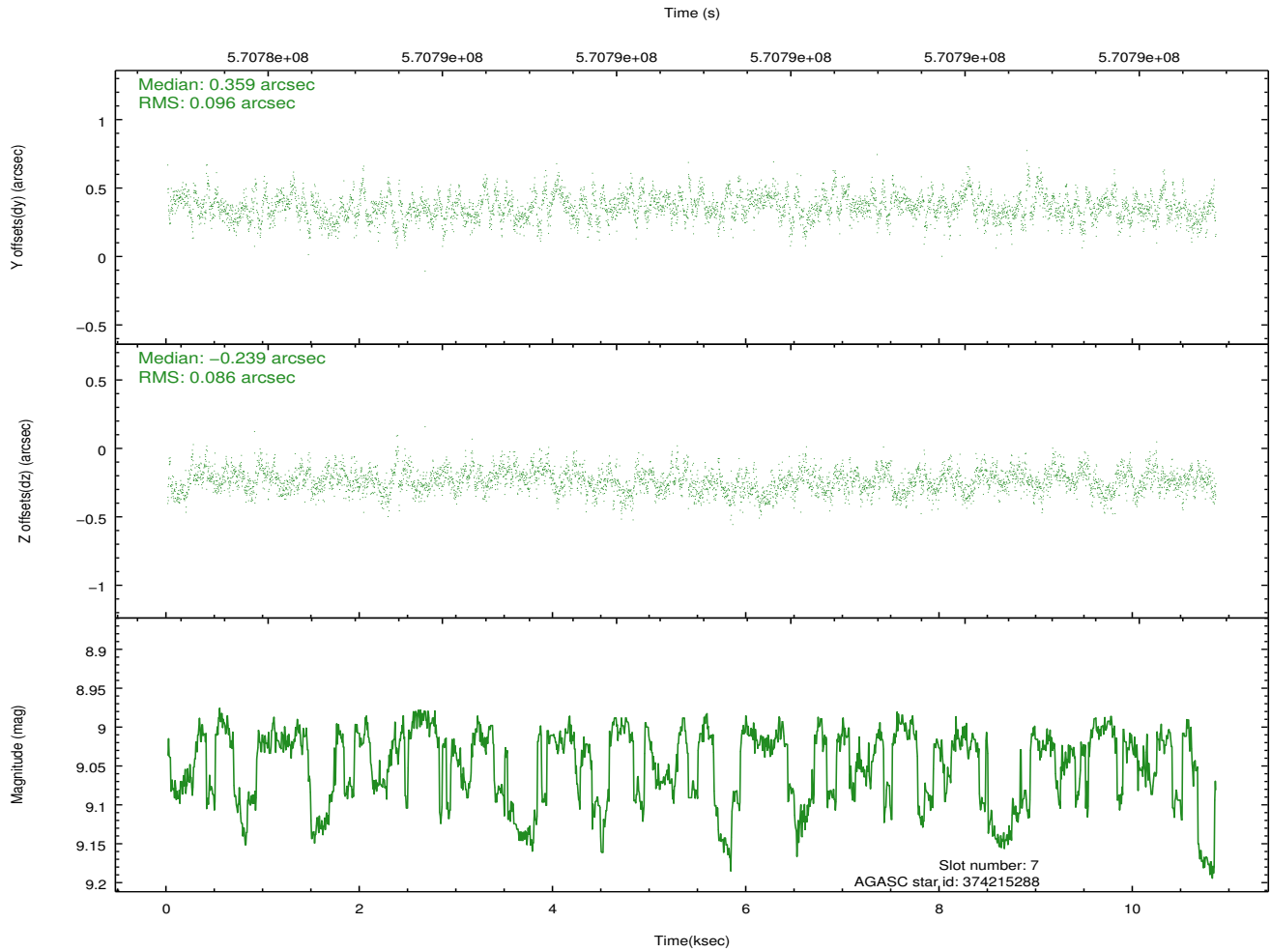
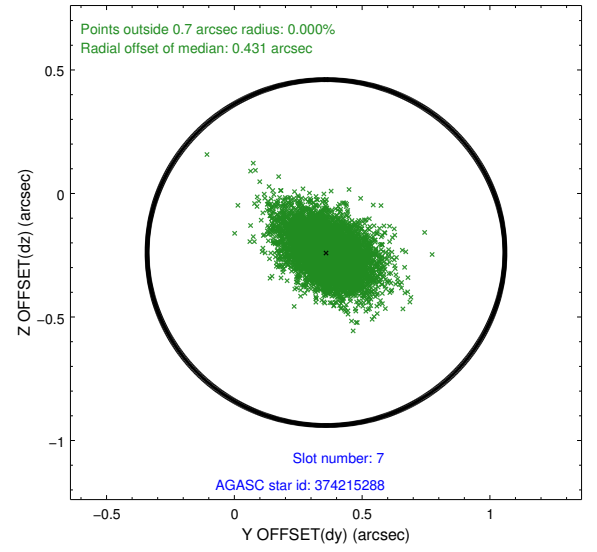
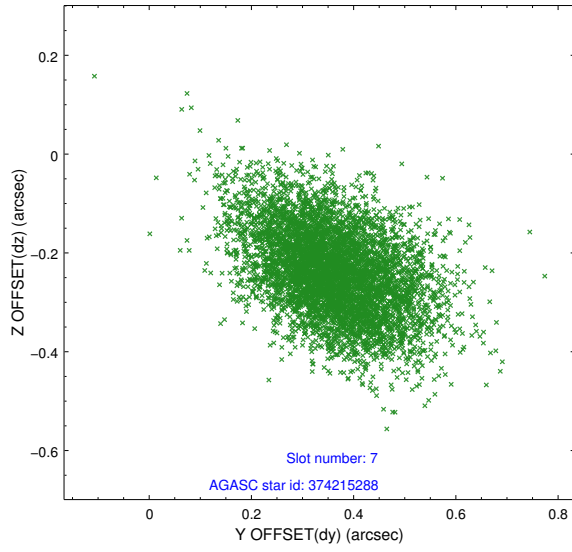
2.4.3 Slot 5



2.4.4 Slot 6

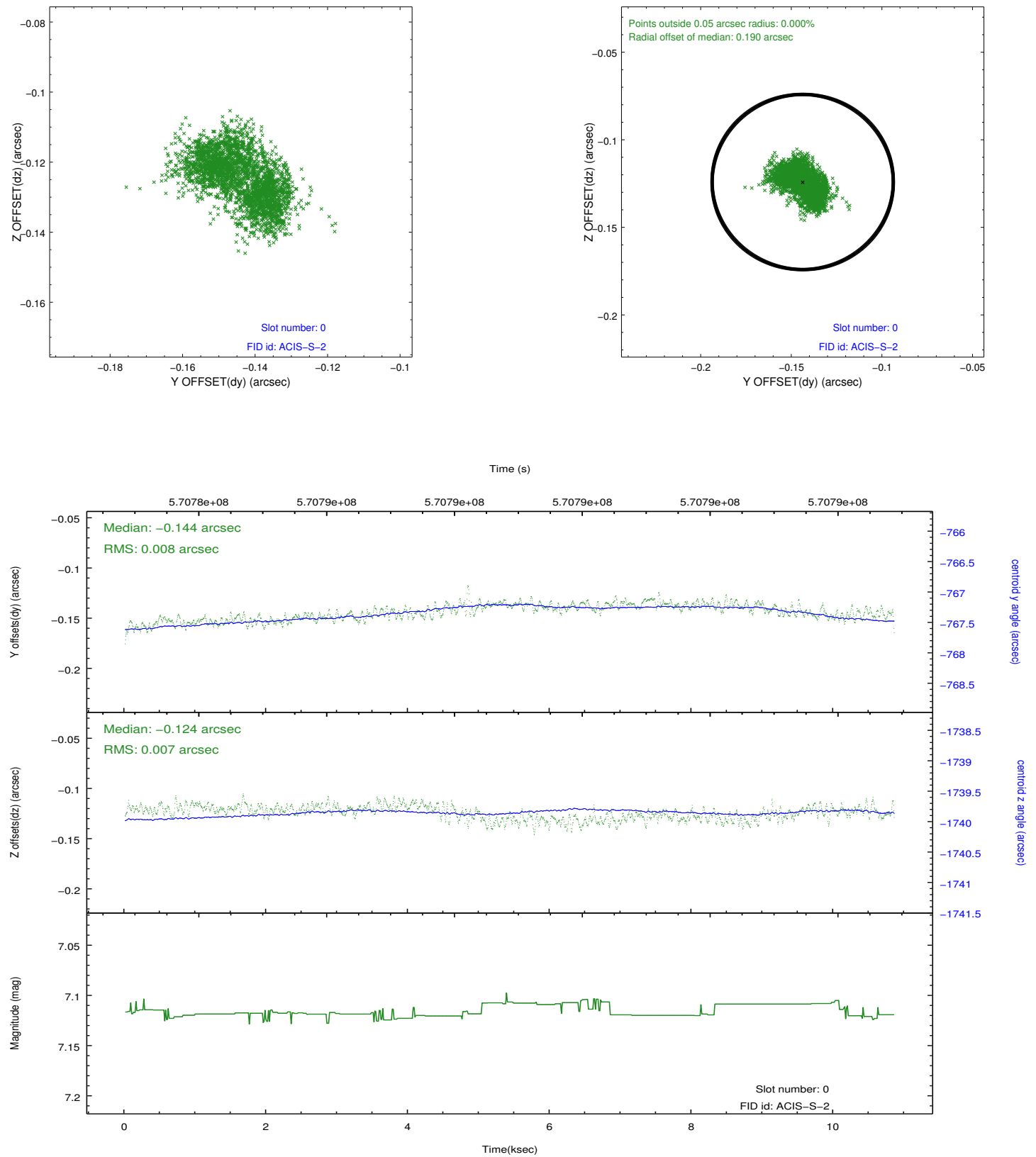


2.4.5 Slot 7

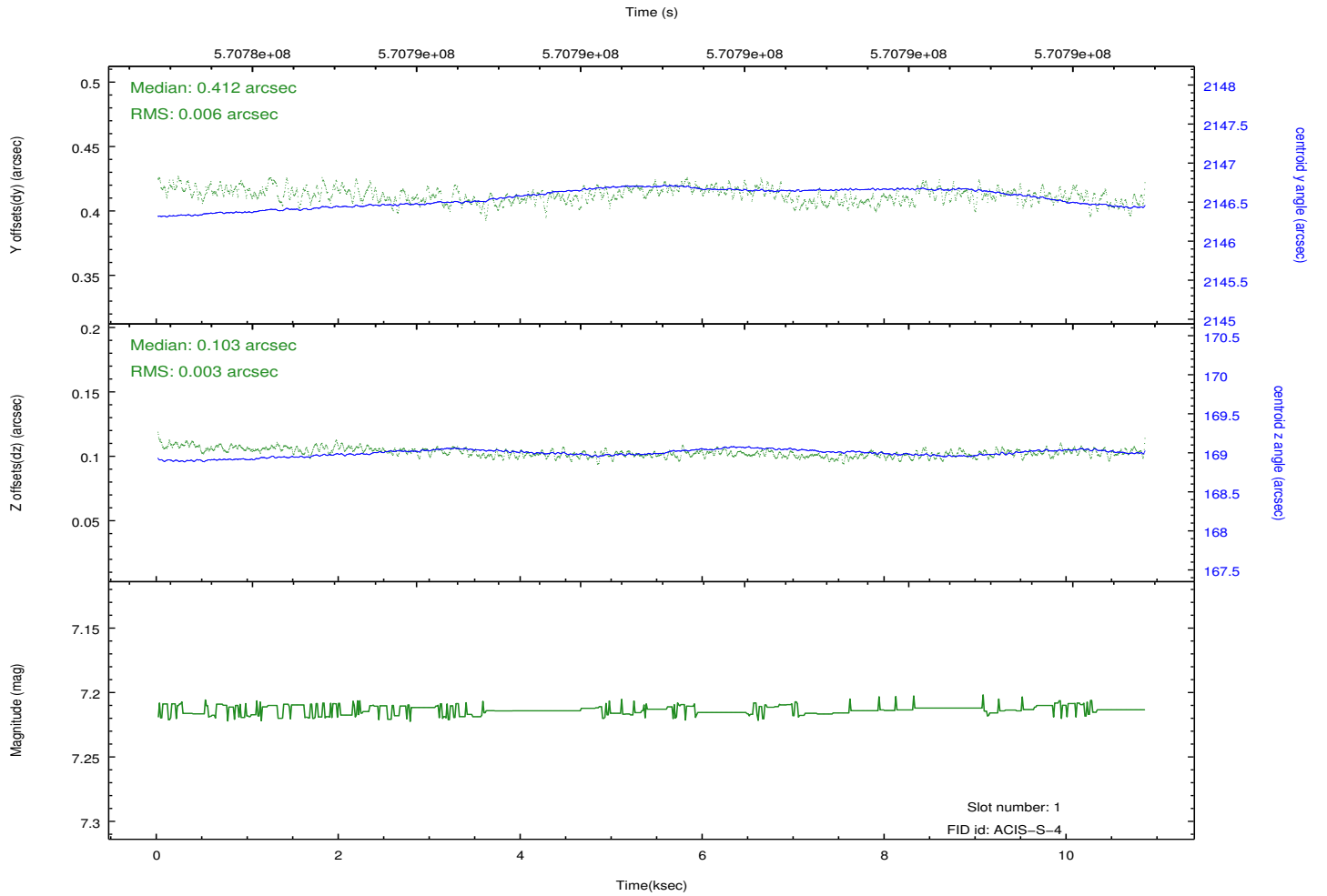
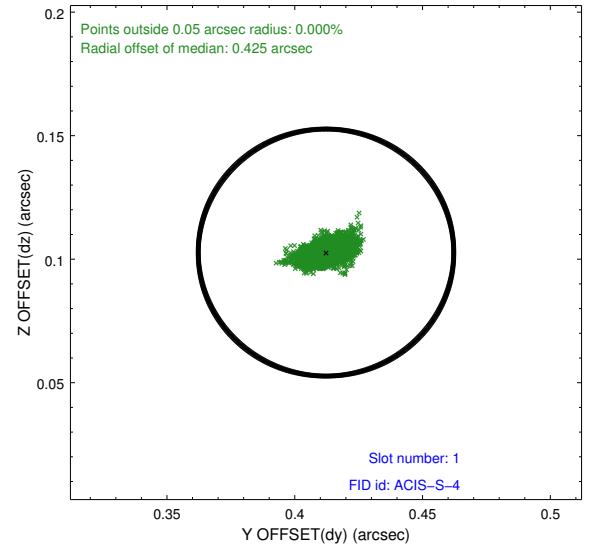
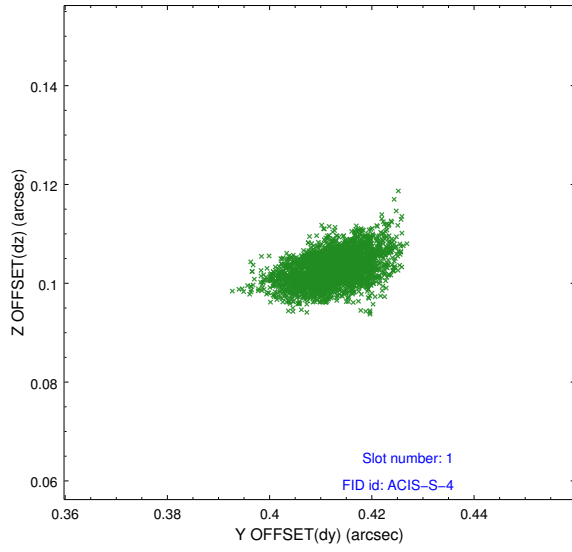


2.5 FID Slots

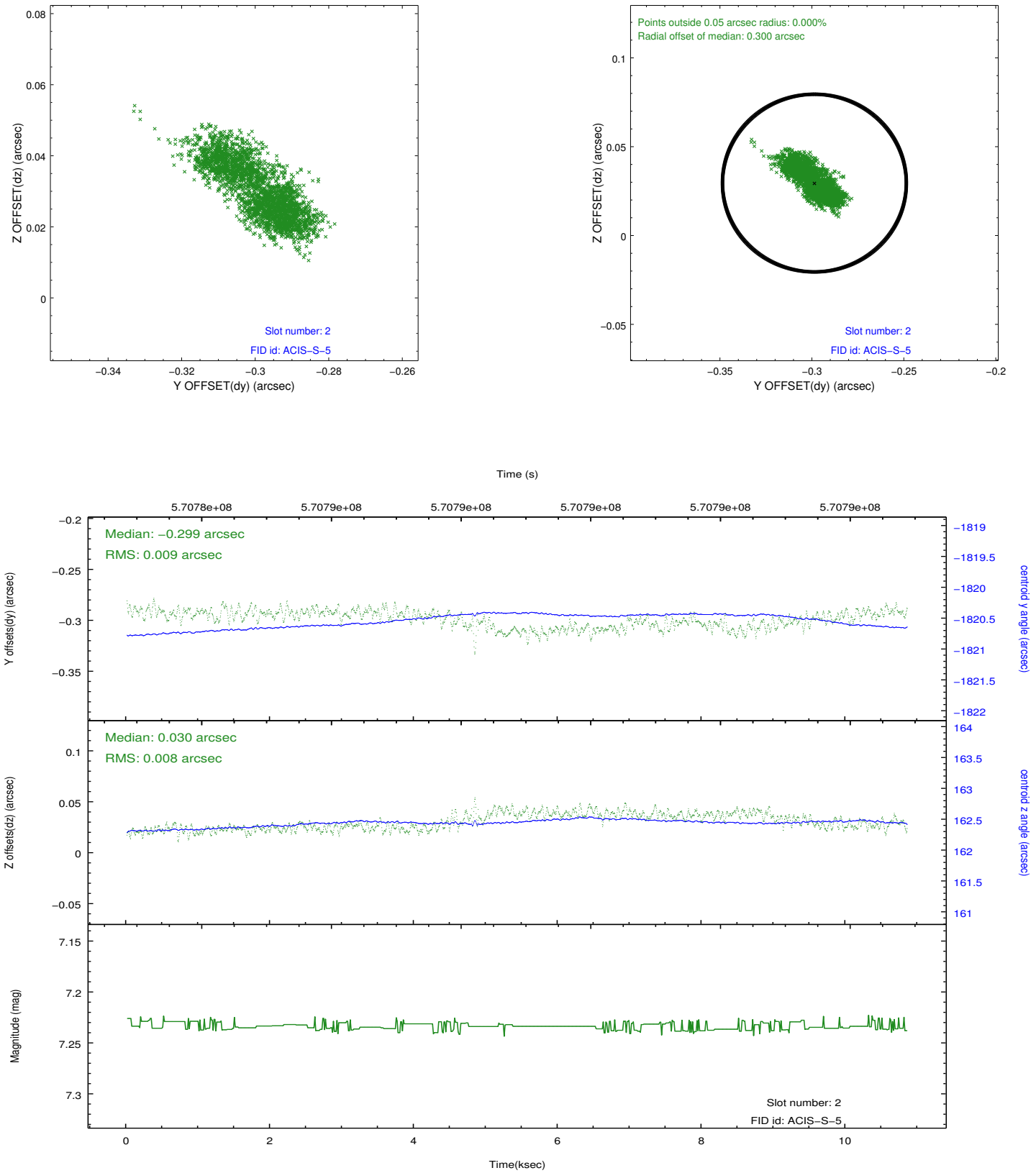
2.5.1 Slot 0



2.5.2 Slot 1



2.5.3 Slot 2



A Summary

A.1 Status

V&V Scientist	Jen Lauer
V&V Date (YYYY-MM-DD)	2016.02.02
V&V Edition	1
V&V Disposition and Status	OK
V&V Charge Time	10.056400077462

A.2 Comments

Joint Proposal: NRAO