

V&V Reference Report

L2 ASCDS Version : 10.4.3.1

Observation 17864 - L2 Version 1
Chandra X-Ray Center

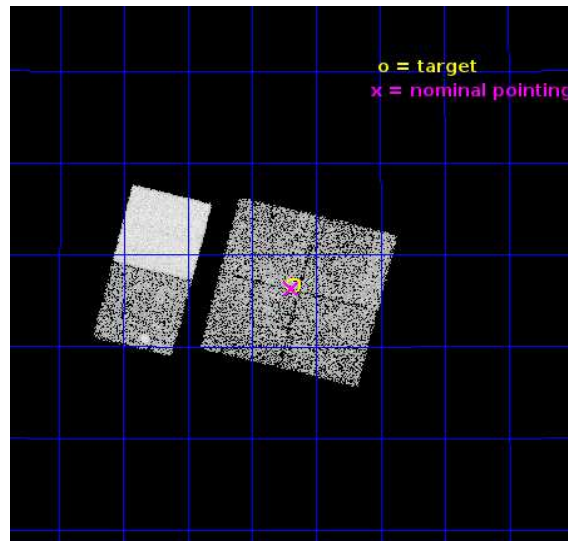
L2 Processing Date : Mar 27 2016

Contents

1	Front	2
2	OBI	3
2.1	OBI	3
2.1.1	Images	3
2.1.2	Bias	3
2.1.3	Parameters	4
2.1.4	Events	4
2.2	Compared Parameters	5
2.3	Aspect	6
2.4	Star Slots	9
2.4.1	Slot 3	9
2.4.2	Slot 4	10
2.4.3	Slot 5	11
2.4.4	Slot 6	12
2.4.5	Slot 7	13
2.5	FID Slots	14
2.5.1	Slot 0	14
2.5.2	Slot 1	15
2.5.3	Slot 2	16
A	Summary	17
A.1	Status	17
A.2	Comments	17

1 Front

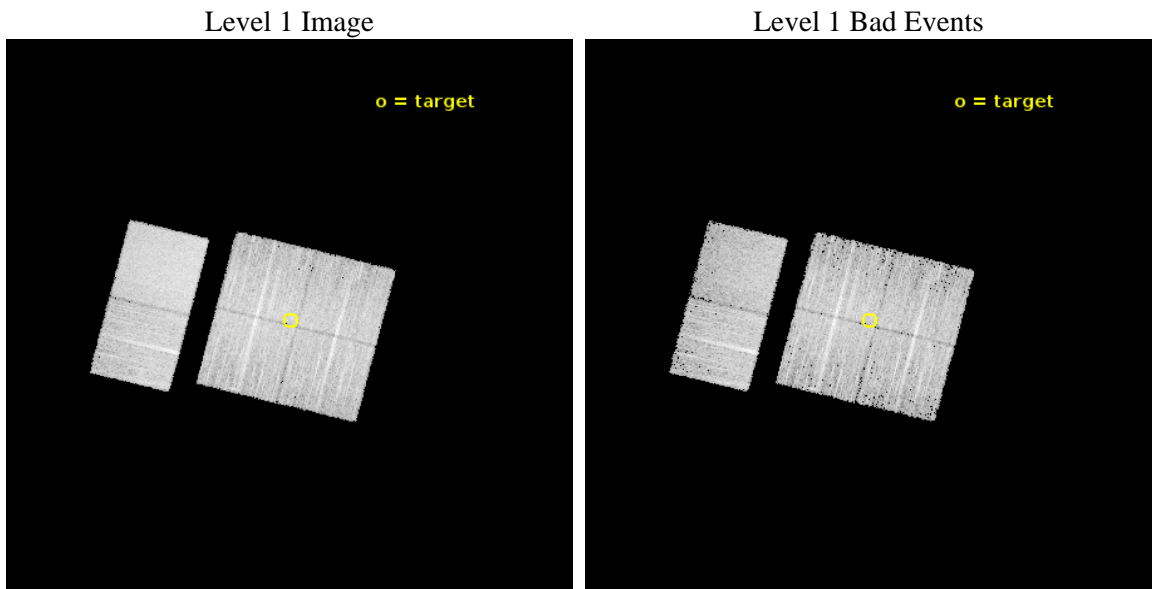
seq_num	401796	Sequence number
obs_id	17864	Observation id
title	X-ray Observations of New Gamma-Ray Bright Galactic Compact Binaries	
observer	Prof. Jay Strader	Principal investigator
object	3FGL J0402.7+2616	Source name
dtcycle	0	
cycle	P	events from which exps? Prim/Second/Both
ra_targ	60.668708	Observer's specified target RA [deg]
dec_targ	26.277833	Observer's specified target Dec [deg]
ra_nom	60.673438711161	Nominal RA [deg]
dec_nom	26.271931137014	Nominal Dec [deg]
roll_nom	284.20659686426	Nominal Roll [deg]
revision	1	Processing version of data
ontime	9941.0316359997	Sum of GTIs [s]
livetime	9815.152307654	Livetime [s]
ontime0	9944.1493669748	Sum of GTIs [s]
ontime1	9944.1904069185	Sum of GTIs [s]
ontime2	9944.2314469814	Sum of GTIs [s]
ontime3	9941.0316359997	Sum of GTIs [s]
ontime6	9944.3545669317	Sum of GTIs [s]
ontime7	9944.313526988	Sum of GTIs [s]
l2events	61988	Number of level 2 events



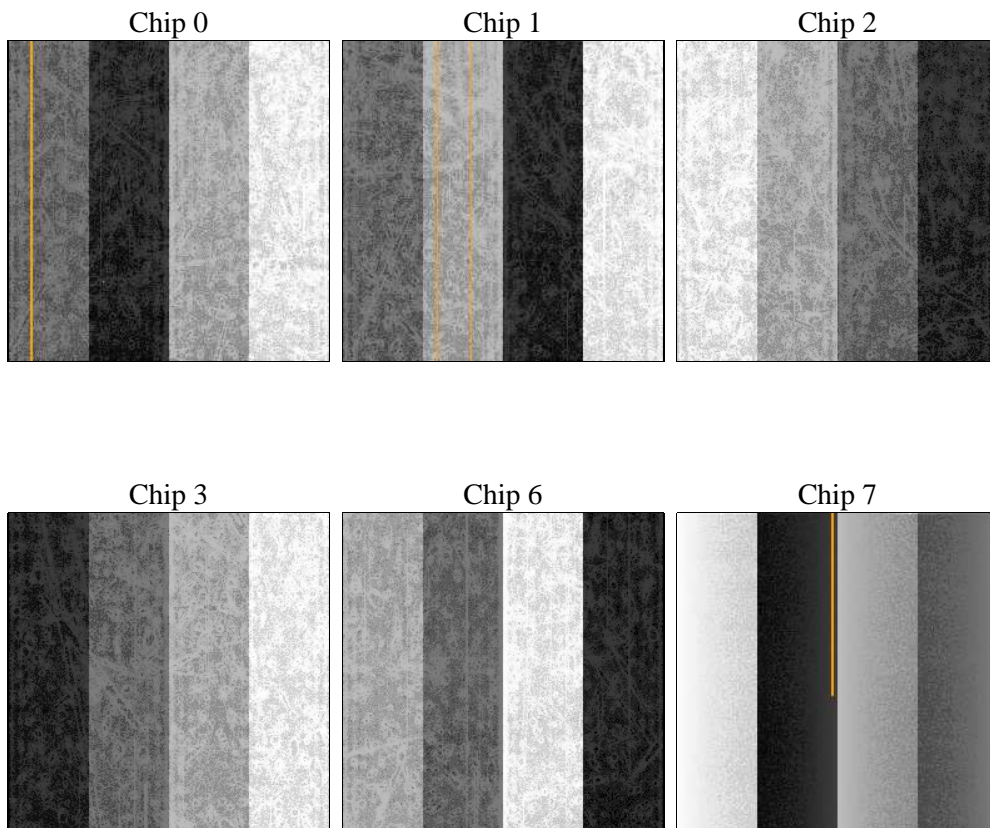
2 OBI

2.1 OBI

2.1.1 Images



2.1.2 Bias



2.1.3 Parameters

obi_num	1	Obi number	sched_exp_time	10000.000000	[s] Scheduled observation exposure time
ascdsver	10.4.3.1	Processing system revision	ontime	9941.0316359997	Sum of GTIs [s]
caldsver	4.7.1	 	ontime0	9944.1493669748	Sum of GTIs [s]
date	2016-03-27T11:06:22	Date and time of file creation	ontime1	9944.1904069185	Sum of GTIs [s]
revision	1	Processing version of data	ontime2	9944.2314469814	Sum of GTIs [s]
			ontime3	9941.0316359997	Sum of GTIs [s]
			ontime6	9944.3545669317	Sum of GTIs [s]
			ontime7	9944.313526988	Sum of GTIs [s]
			l1events	360903	Number of level 1 events

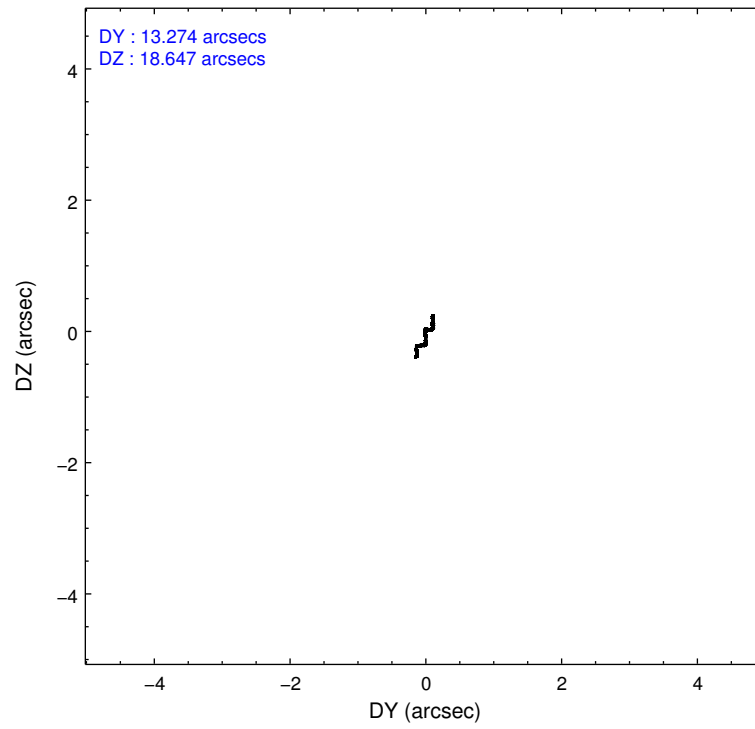
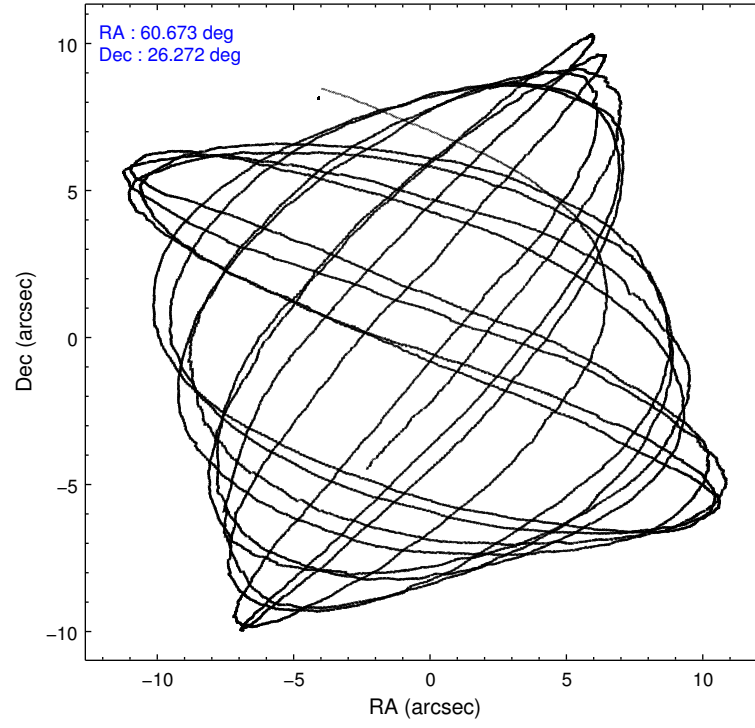
2.1.4 Events

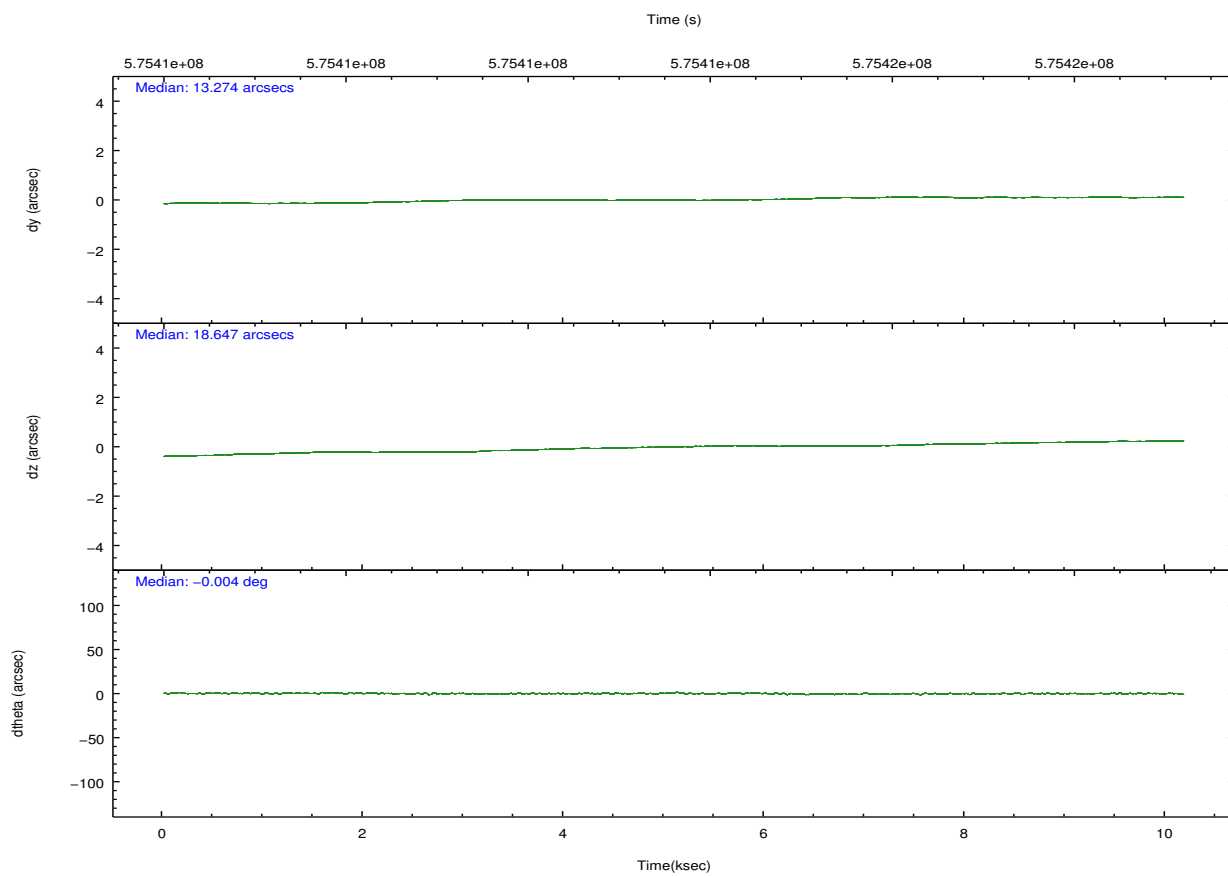
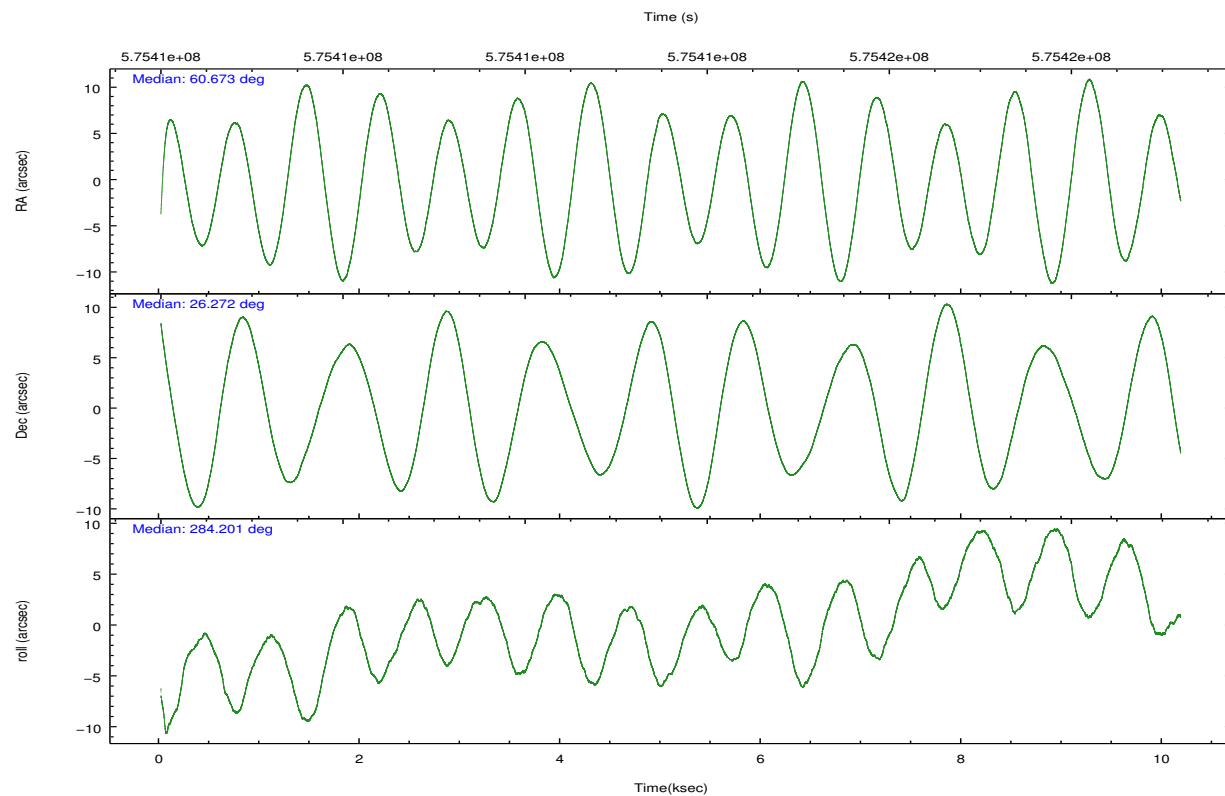
	ccd 0	ccd 1	ccd 2	ccd 3	ccd 6	ccd 7		ccd 0	ccd 1	ccd 2	ccd 3	ccd 6	ccd 7
level 1 events	53235	54685	58358	58095	59727	76803	grade 0 events	2265	2657	2351	2461	2592	2830
rejected events	46533	47108	51609	51533	52579	43317		4%	4%	4%	4%	4%	3%
rejected %	87%	86%	88%	88%	88%	56%	grade 1 events	15	25	29	40	28	103
								0%	0%	0%	0%	0%	0%
							grade 2 events	1657	1923	1695	1389	1585	7020
								3%	3%	2%	2%	2%	9%
							grade 3 events	671	725	688	712	694	2839
								1%	1%	1%	1%	1%	3%
							grade 4 events	690	706	704	655	664	2838
								1%	1%	1%	1%	1%	3%
							grade 5 events	2649	2701	2469	3016	2988	7955
								4%	4%	4%	5%	5%	10%
							grade 6 events	1421	1571	1311	1351	1619	17978
								2%	2%	2%	2%	2%	23%
							grade 7 events	43867	44377	49111	48471	49557	35240
								82%	81%	84%	83%	82%	45%

2.2 Compared Parameters

Parameter	Planned	Actual	Parameter	Planned	Actual
Instrument	ACIS	ACIS	Obspar format version number	7	7
Detector	ACIS-012367	ACIS-012367	Obspar file type	PREDICTED	ACTUAL
Grating	NONE	NONE	Obspar update status	NONE	UPDATED
Data mode	VFAINT	VFAINT	CCD I0 on	Y	Y
Observation mode	POINTING	POINTING	CCD I1 on	Y	Y
[deg] Pointing RA	60.651863	60.67343871116061	CCD I2 on	Y	Y
[deg] Pointing Dec	26.291617	26.27193113701439	CCD I3 on	Y	Y
[deg] Pointing Roll	284.007459	284.206596864264	CCD S0 on	N	N
[mm] SIM focus pos	-0.782348	-0.7809083437167272	CCD S1 on	N	N
[mm] SIM defocus	0	0.001439871863259334	CCD S2 on	O2	Y
[mm] SIM translation stage pos	-233.592463	-233.5874344608287	CCD S3 on	O1	Y
[mm] SIM translation stage offset	0	-0.005018542100998502	CCD S4 on	N	N
[s] Observation start time (MET)	575408706.184000	575407520.73482	CCD S5 on	N	N
Observation start date	2016-03-26T19:43:58	2016-03-26T19:25:20	Number of optional ACIS chips dropped	0	0
[s] Observation end time (MET)	575418706.184000	575419799.21052	On-chip summing requested	N	N
Observation end date	2016-03-26T22:30:38	2016-03-26T22:49:59	Subarray requested	NONE	NONE
Read mode	TIMED	TIMED	Alternating exposures requested	N	N
			[s] Primary exposure time	0.000000	3.2

2.3 Aspect



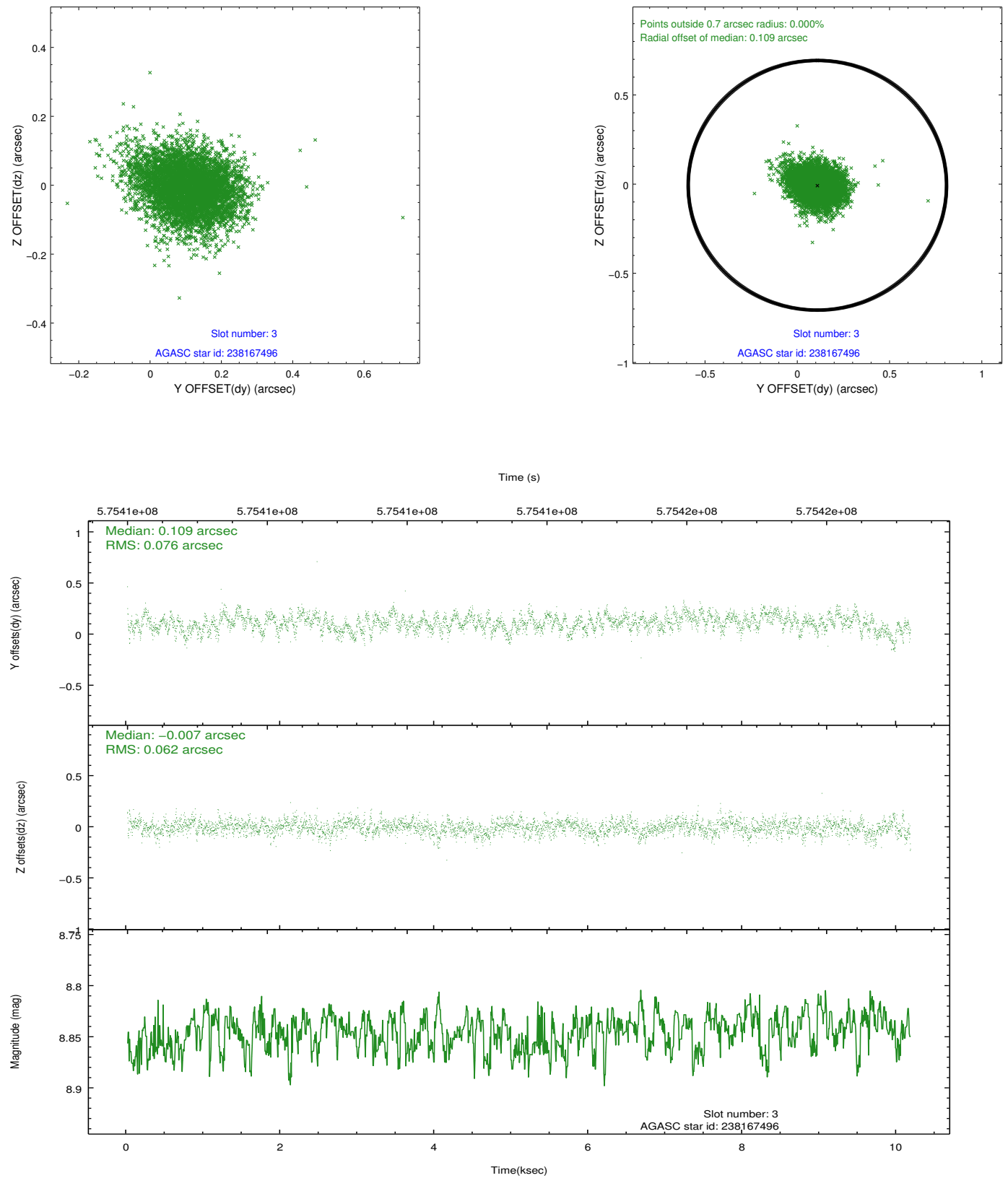


Slot Statistics

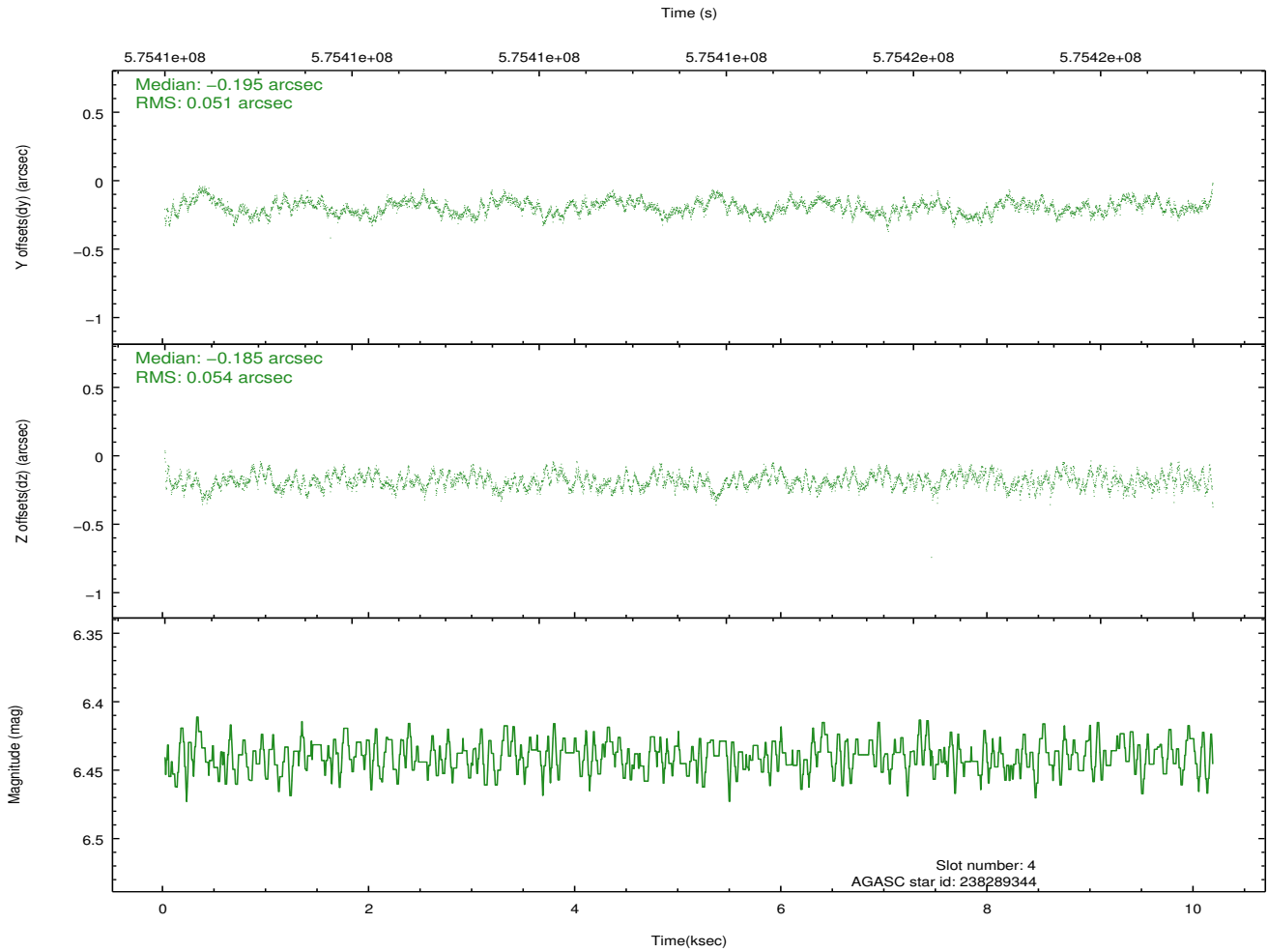
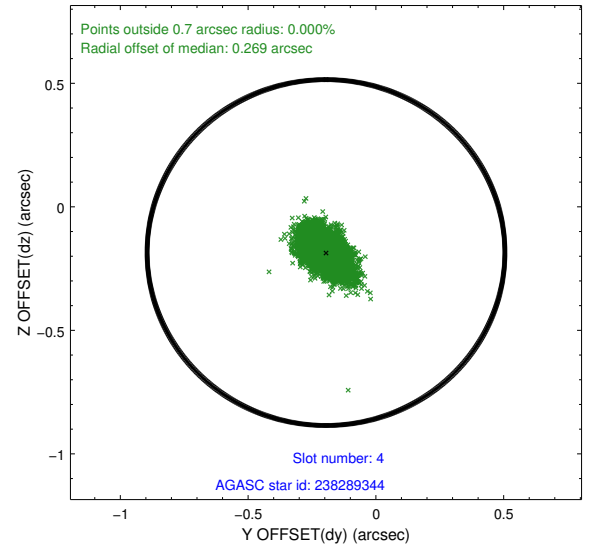
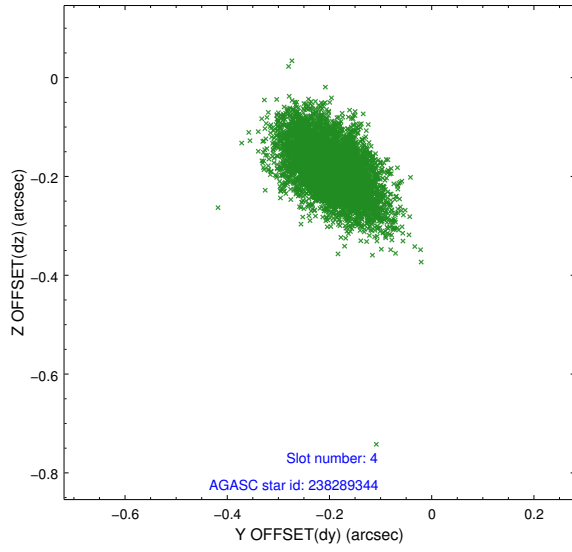
slot	status	used	id	mag	n_pts	med_dy	med_dz	dr1	dr2	ra	dec	mean_y	mean_z
0	FID		ACIS-I-1	7.24	2481	0.074	-0.006	0.007	0.012	0.000000	0.000000	926.33	-842.28
1	FID		ACIS-I-5	7.25	2481	-0.315	0.054	0.007	0.012	0.000000	0.000000	-1821.94	1054.92
2	FID		ACIS-I-6	7.24	2481	0.150	0.023	0.007	0.012	0.000000	0.000000	391.30	1700.05
3	GUIDE	used	238167496	8.85	4957	0.109	-0.007	0.103	0.169	60.112263	25.793648	1313.50	-2129.64
4	GUIDE	used	238289344	6.44	4962	-0.195	-0.185	0.078	0.130	61.193787	26.200575	738.45	1619.42
5	GUIDE	used	238683888	8.90	4957	0.163	0.242	0.095	0.159	59.917366	26.387415	-913.58	-2212.70
6	GUIDE	used	238820712	9.18	4960	-0.125	0.134	0.148	0.240	61.059010	26.861252	-1675.36	1765.10
7	GUIDE	used	238293120	8.96	4958	0.044	-0.173	0.097	0.163	61.497738	25.788215	2414.19	2225.98

2.4 Star Slots

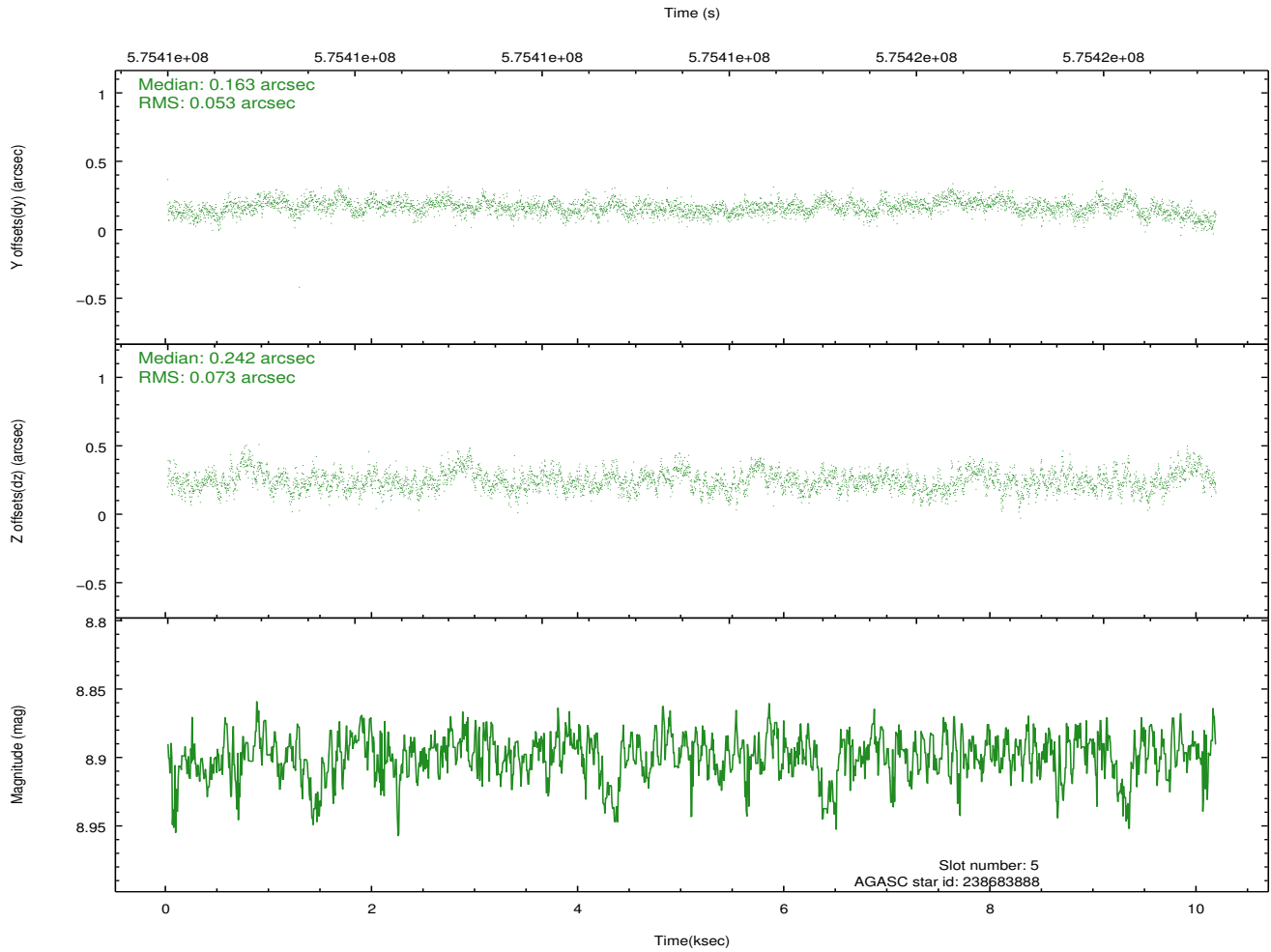
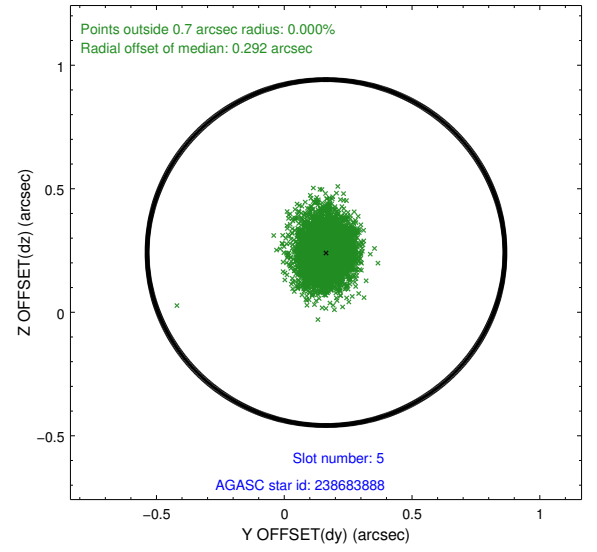
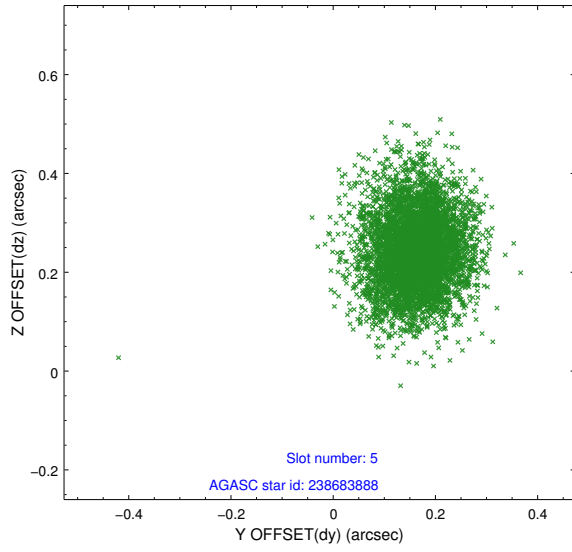
2.4.1 Slot 3



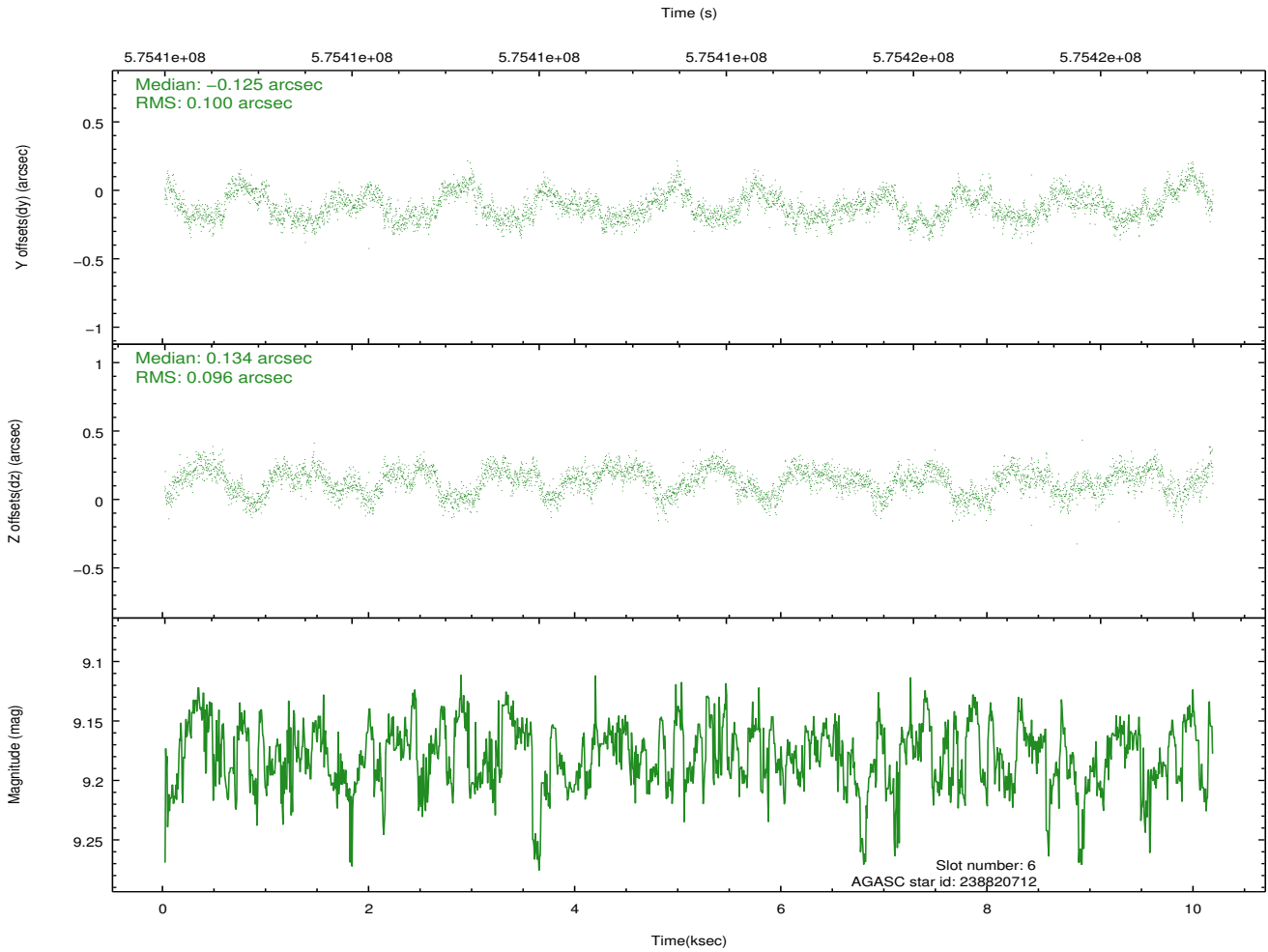
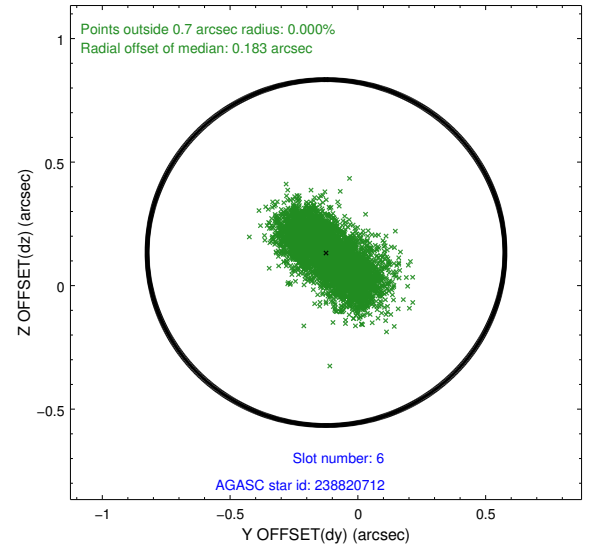
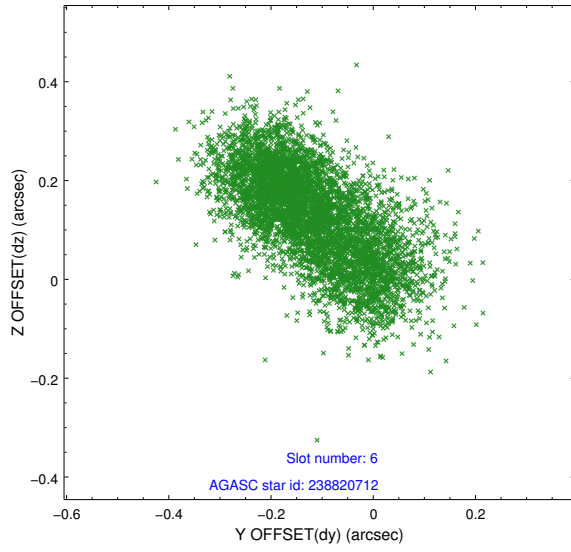
2.4.2 Slot 4



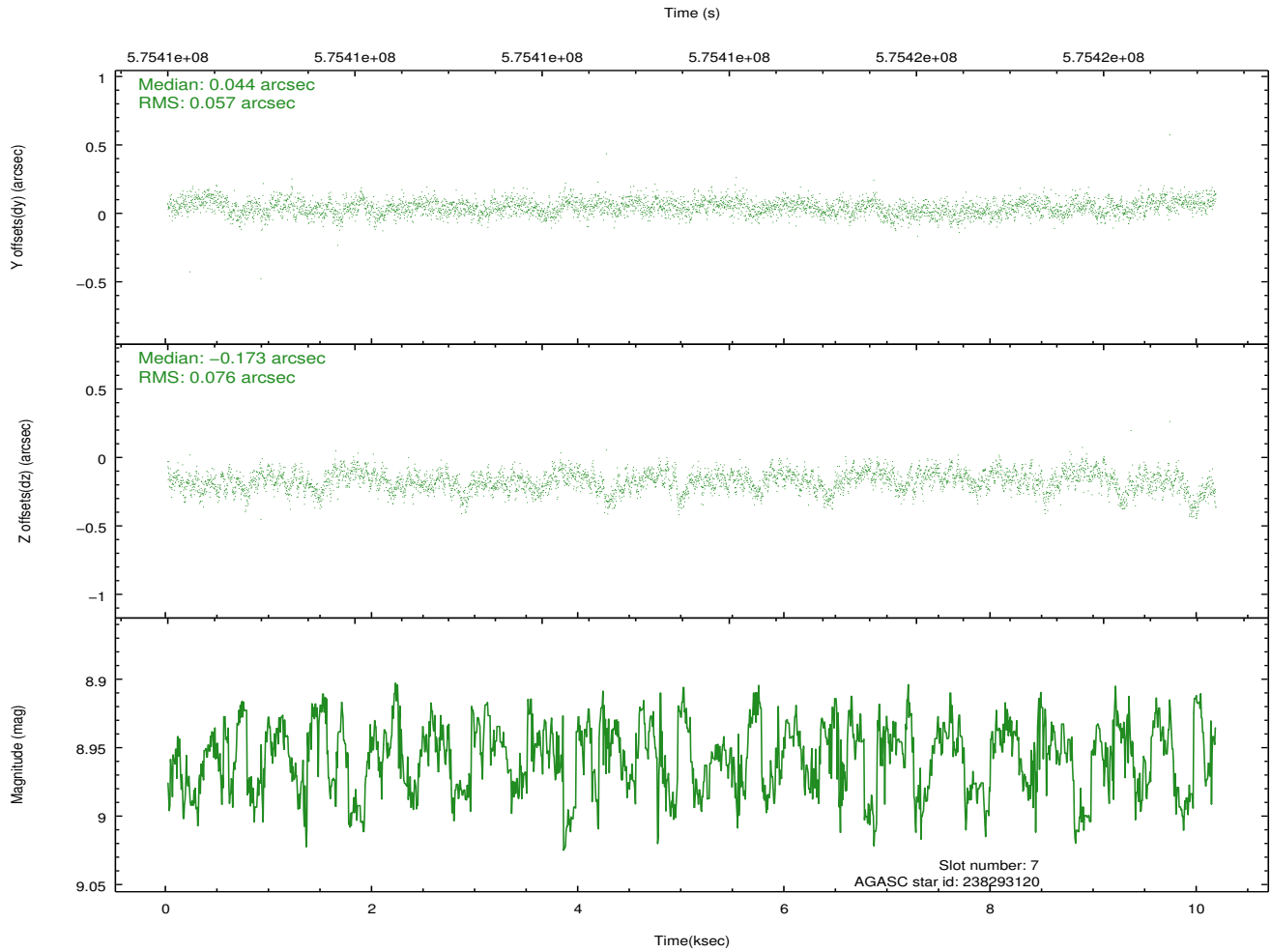
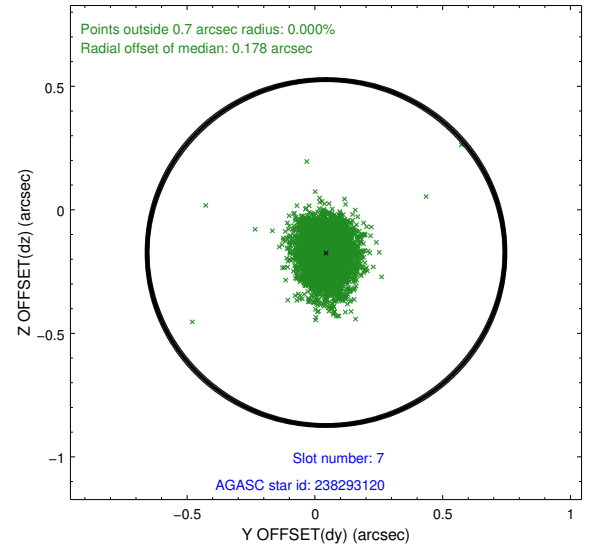
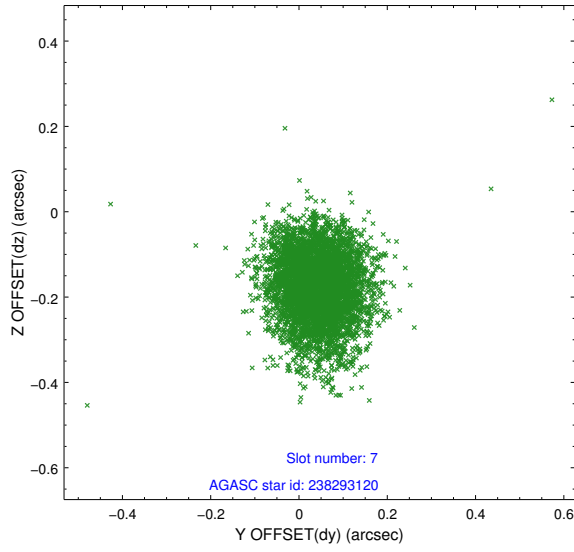
2.4.3 Slot 5



2.4.4 Slot 6

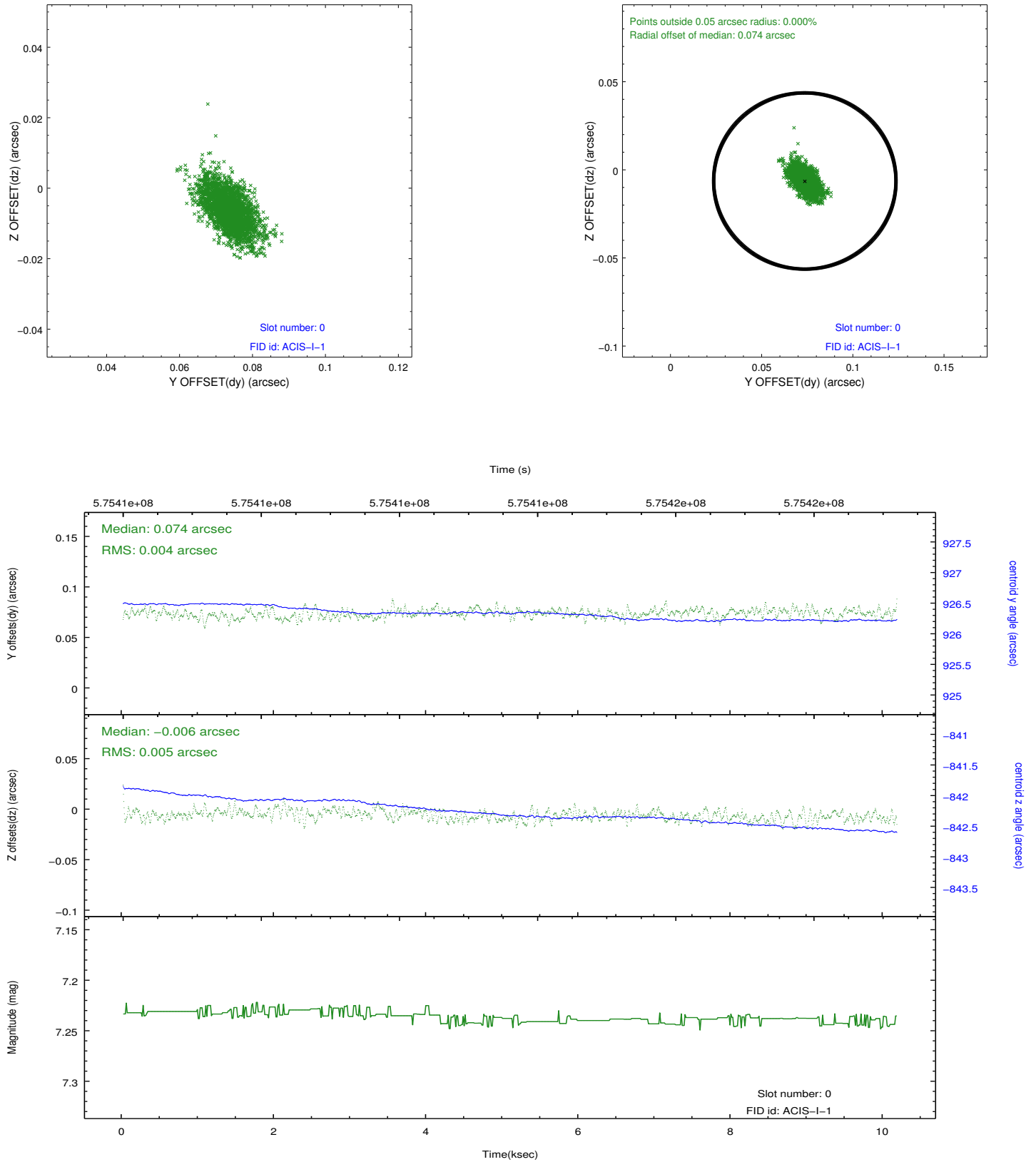


2.4.5 Slot 7

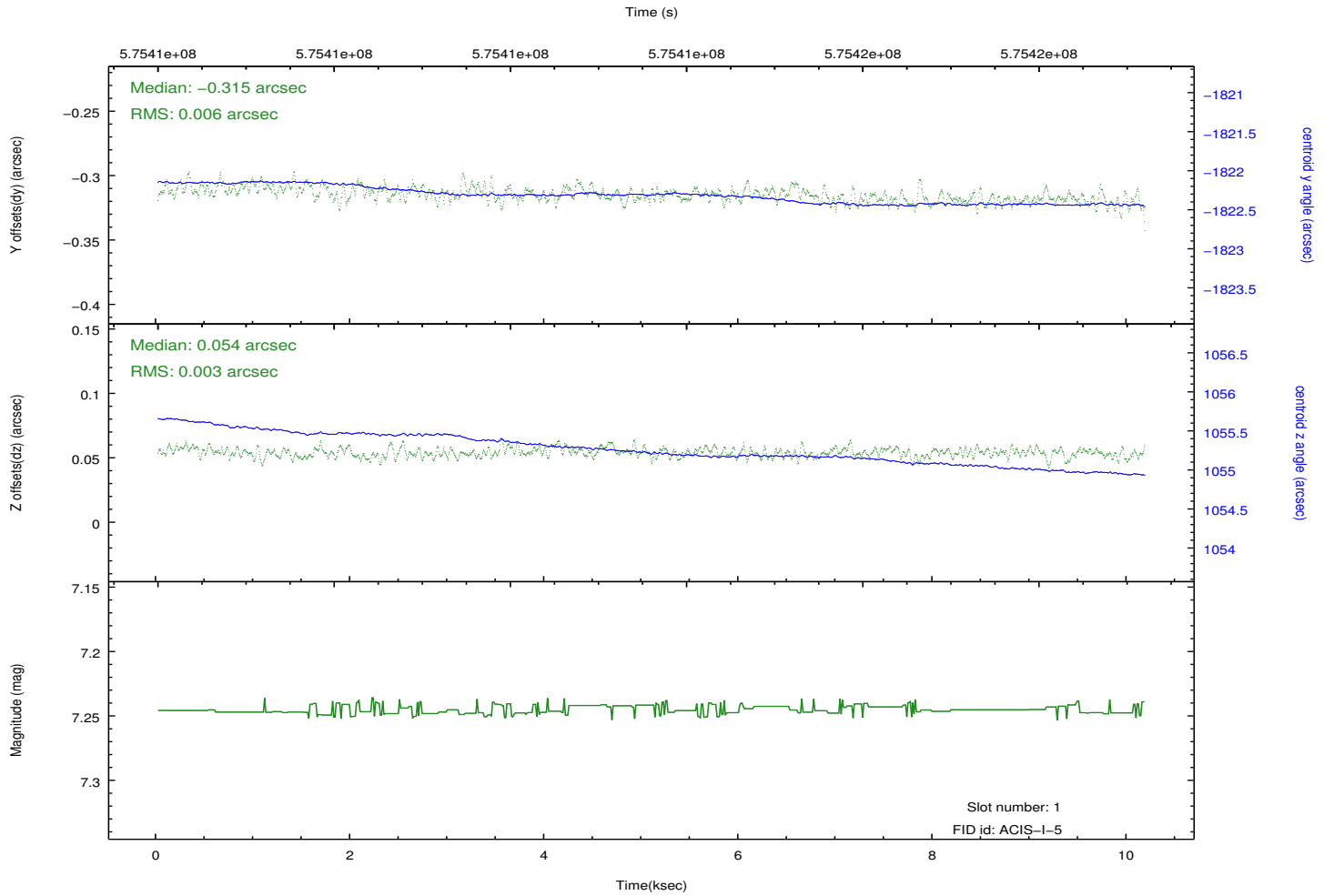
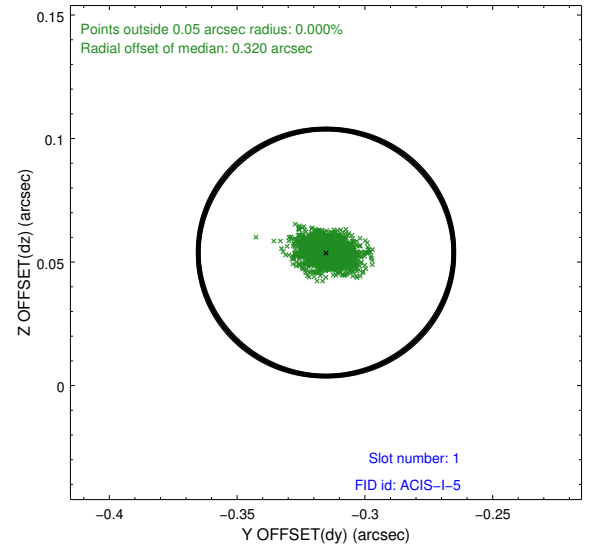
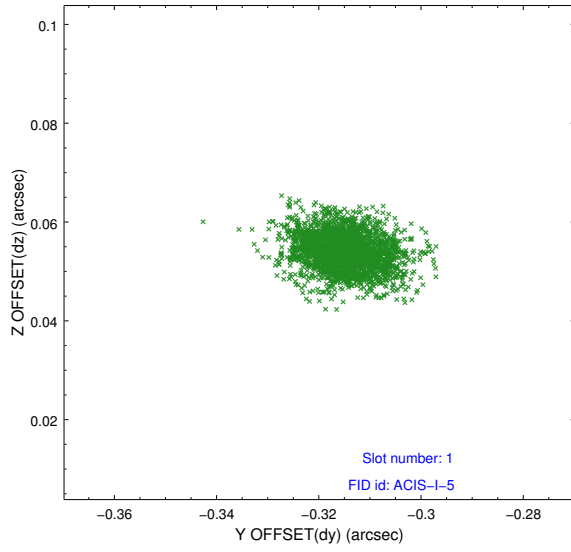


2.5 FID Slots

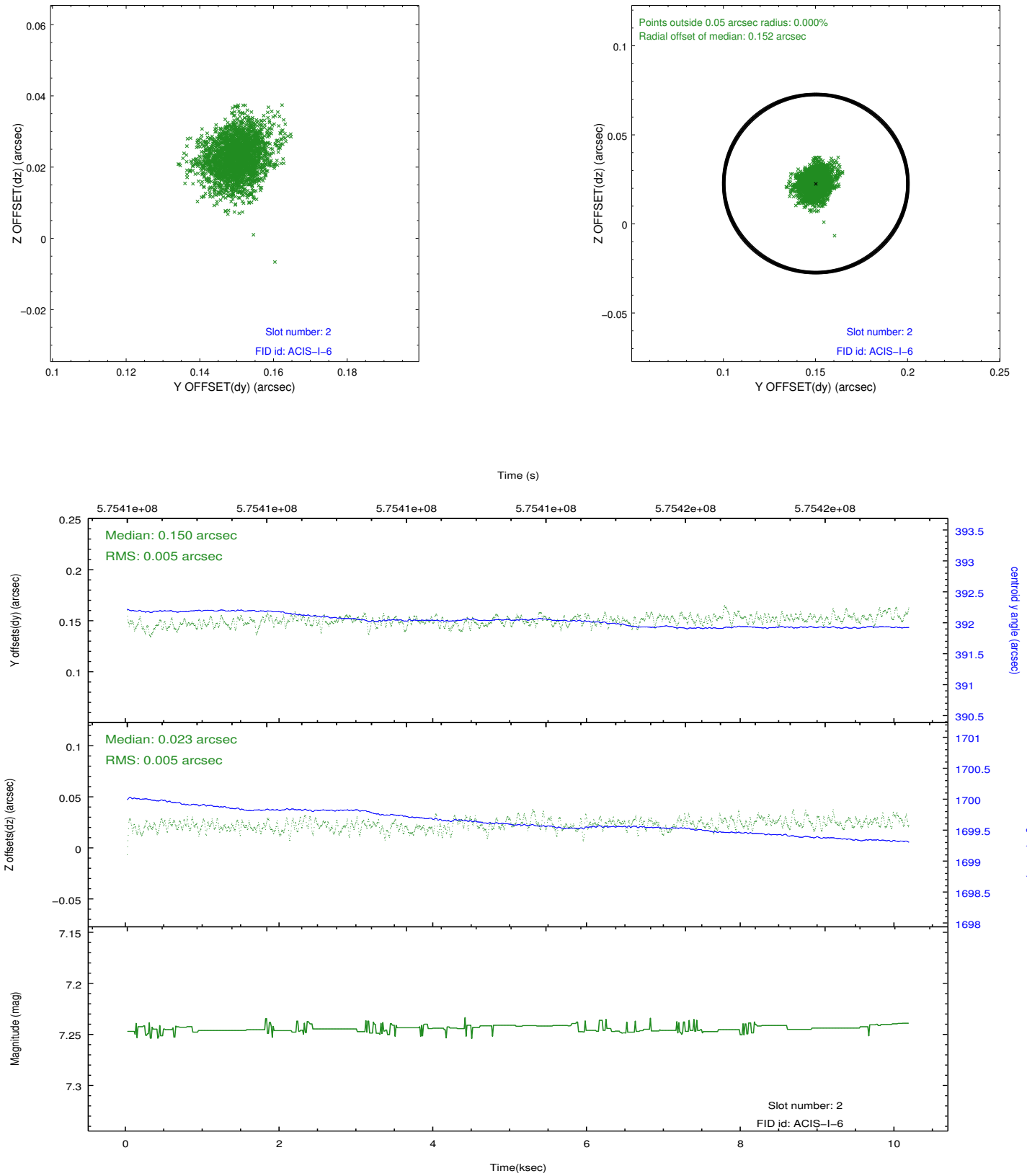
2.5.1 Slot 0



2.5.2 Slot 1



2.5.3 Slot 2



A Summary

A.1 Status

V&V Scientist	Beth Sundheim
V&V Date (YYYY-MM-DD)	2016.03.27
V&V Edition	1
V&V Disposition and Status	OK
V&V Charge Time	9.9410316359997

A.2 Comments