

V&V Reference Report

L2 ASCDS Version : 10.5

Observation 18883 - L2 Version 1
Chandra X-Ray Center

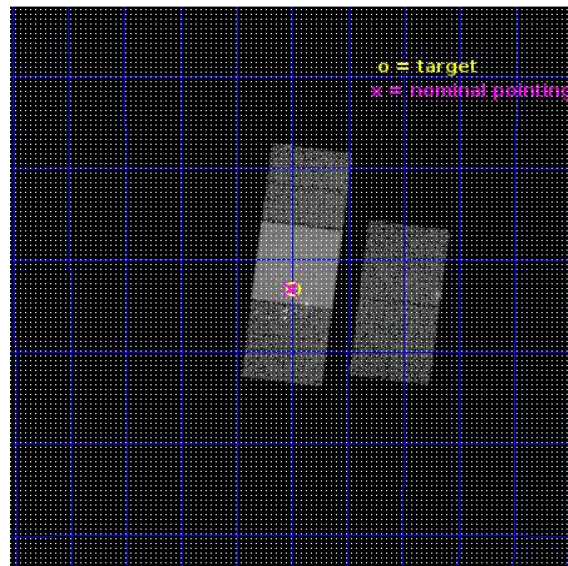
L2 Processing Date : Jul 13 2016

Contents

1	Front	2
2	OBI	3
2.1	OBI	3
2.1.1	Images	3
2.1.2	Bias	3
2.1.3	Parameters	4
2.1.4	Events	4
2.2	Compared Parameters	5
2.3	Aspect	6
2.4	Star Slots	9
2.4.1	Slot 3	9
2.4.2	Slot 4	10
2.4.3	Slot 5	11
2.4.4	Slot 6	12
2.4.5	Slot 7	13
2.5	FID Slots	14
2.5.1	Slot 0	14
2.5.2	Slot 1	15
2.5.3	Slot 2	16
A	Summary	17
A.1	Status	17
A.2	Comments	17

1 Front

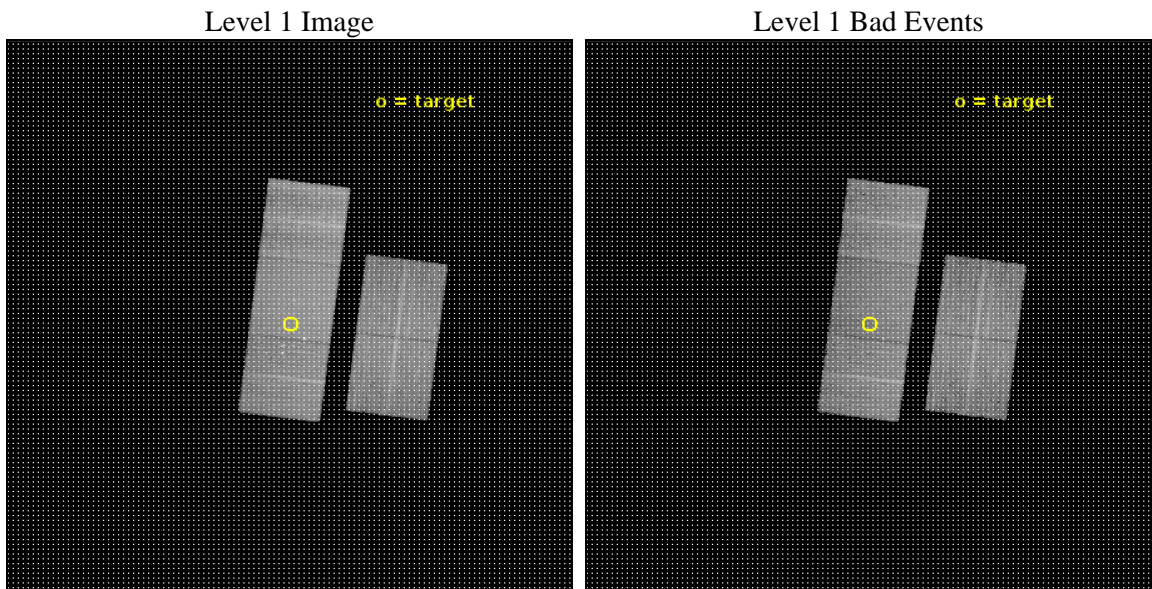
seq_num	201058	Sequence number
obs_id	18883	Observation id
title	X-rays reveal a new, hot jet component: The case of Sz 102	Proposa
observer	Christian Schneider	Principal investigator
object	Sz 102	Source name
dtcycle	0	
cycle	P	events from which exps? Prim/Second/Both
ra_targ	242.12375	Observer's specified target RA [deg]
dec_targ	-39.053056	Observer's specified target Dec [deg]
ra_nom	242.12696962723	Nominal RA [deg]
dec_nom	-39.053083073528	Nominal Dec [deg]
roll_nom	277.15868073671	Nominal Roll [deg]
revision	1	Processing version of data
ontime	18175.300139904	Sum of GTIs [s]
livetime	17937.826463115	Livetime [s]
ontime2	18175.300139904	Sum of GTIs [s]
ontime3	18175.300139904	Sum of GTIs [s]
ontime6	18175.300139904	Sum of GTIs [s]
ontime7	18175.300139904	Sum of GTIs [s]
ontime8	18175.300139904	Sum of GTIs [s]
l2events	116033	Number of level 2 events



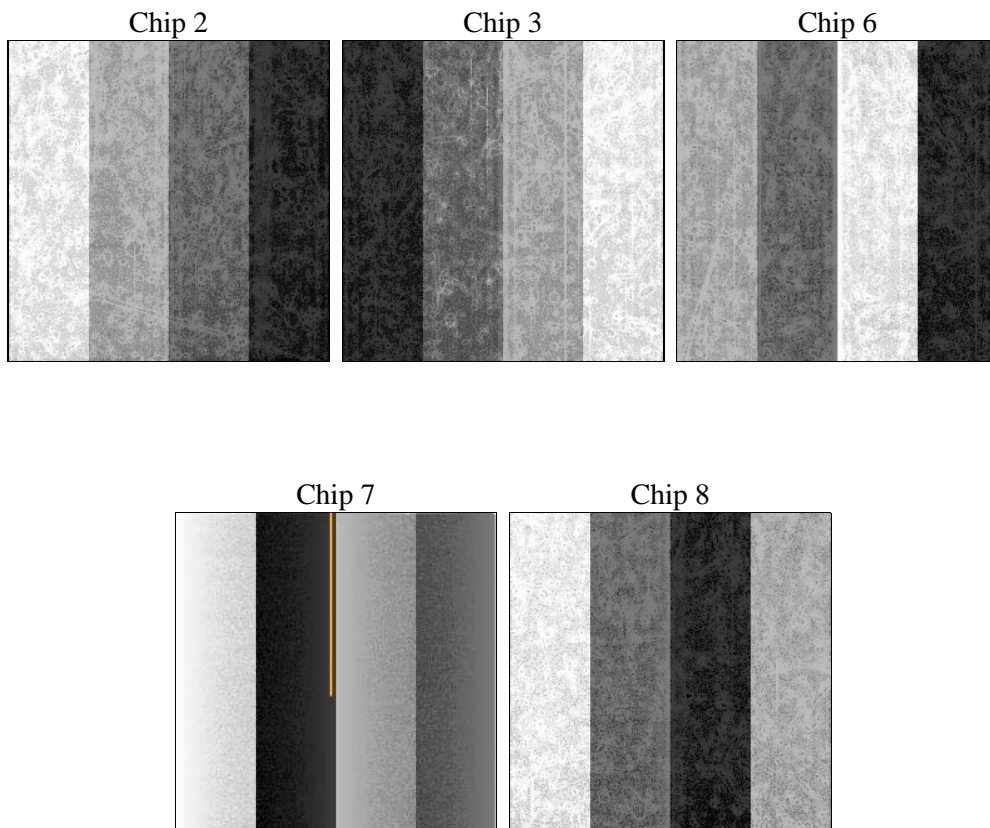
2 OBI

2.1 OBI

2.1.1 Images



2.1.2 Bias



2.1.3 Parameters

obi_num	0	Obi number	sched_exp_time	18114.000000	[s] Scheduled observation exposure time
ascdsver	10.5	Processing system revision	ontime	18175.300139904	Sum of GTIs [s]
caldsver	4.7.2	 	ontime2	18175.300139904	Sum of GTIs [s]
date	2016-07-13T10:59:10	Date and time of file creation	ontime3	18175.300139904	Sum of GTIs [s]
revision	1	Processing version of data	ontime6	18175.300139904	Sum of GTIs [s]
			ontime7	18175.300139904	Sum of GTIs [s]
			ontime8	18175.300139904	Sum of GTIs [s]
			l1events	629084	Number of level 1 events

2.1.4 Events

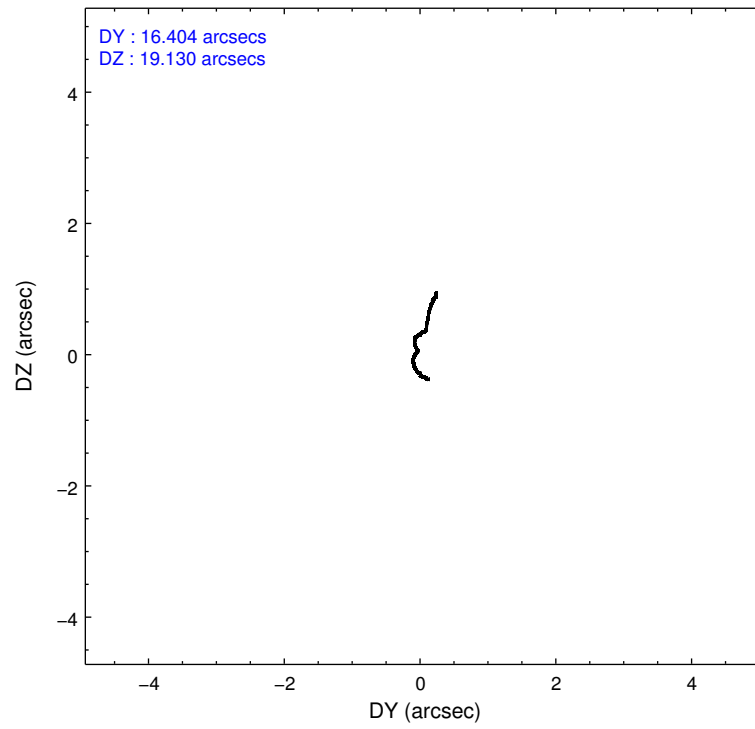
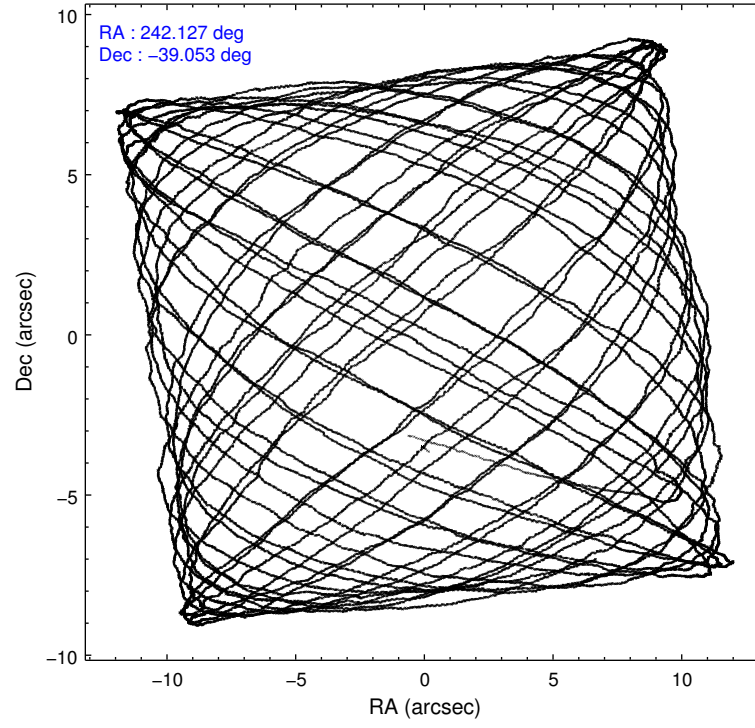
	ccd 2	ccd 3	ccd 6	ccd 7	ccd 8
level 1 events	108777	105408	118954	149355	146590
rejected events	96451	93604	99723	83224	106429
rejected %	88%	88%	83%	55%	72%

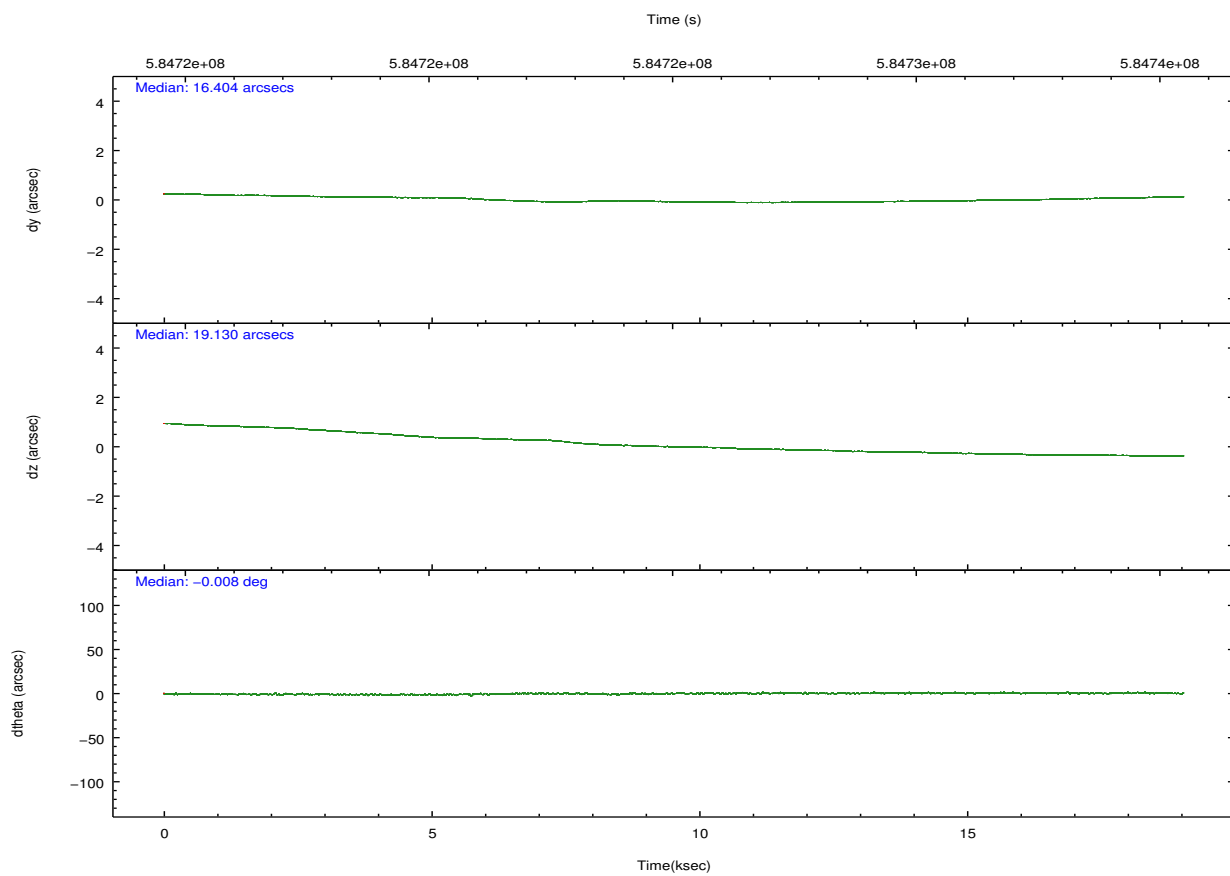
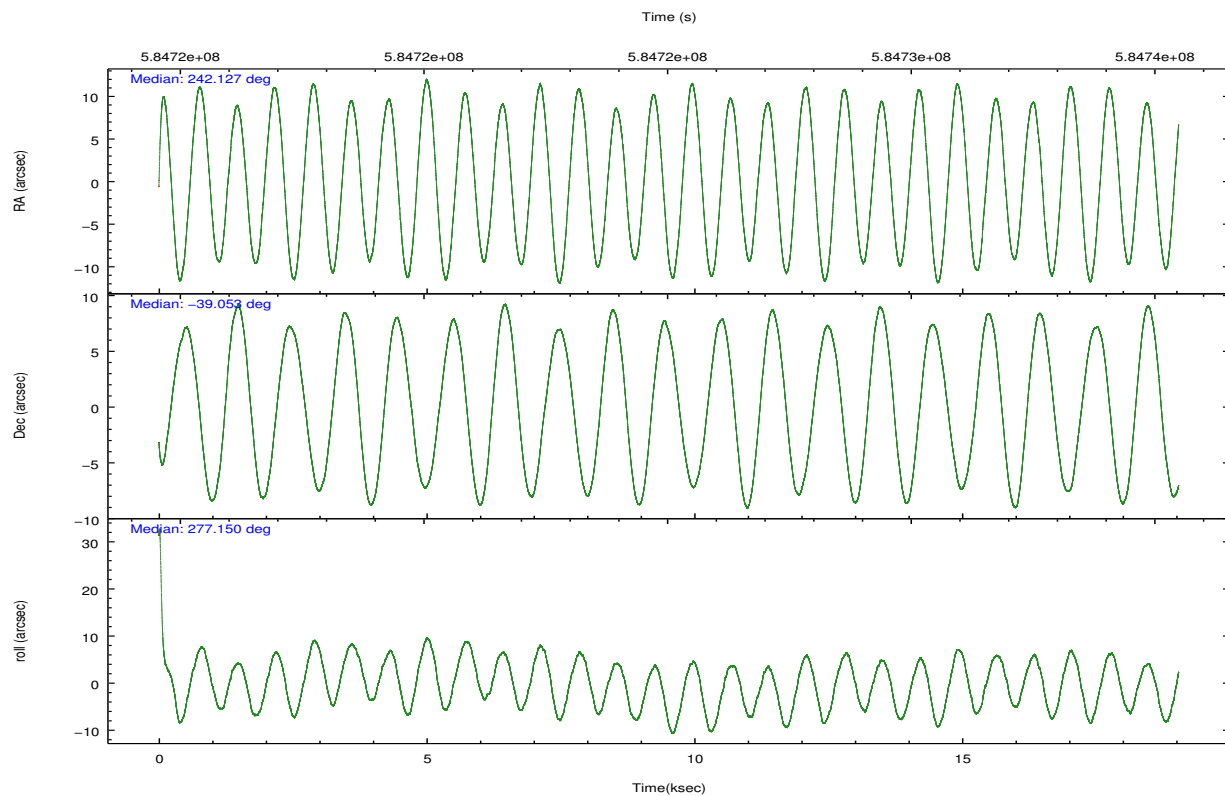
	ccd 2	ccd 3	ccd 6	ccd 7	ccd 8
grade 0 events	4340	4285	9419	6151	11358
	3%	4%	7%	4%	7%
grade 1 events	53	69	185	219	117
	0%	0%	0%	0%	0%
grade 2 events	3097	2637	3709	13962	9937
	2%	2%	3%	9%	6%
grade 3 events	1234	1283	1415	5423	3954
	1%	1%	1%	3%	2%
grade 4 events	1260	1197	1518	5514	3877
	1%	1%	1%	3%	2%
grade 5 events	4541	5421	5436	14990	8191
	4%	5%	4%	10%	5%
grade 6 events	2395	2402	3171	35089	11037
	2%	2%	2%	23%	7%
grade 7 events	91857	88114	94101	68007	98119
	84%	83%	79%	45%	66%

2.2 Compared Parameters

Parameter	Planned	Actual	Parameter	Planned	Actual
Instrument	ACIS	ACIS	Obspar format version number	7	7
Detector	ACIS-23678	ACIS-23678	Obspar file type	PREDICTED	ACTUAL
Grating	NONE	NONE	Obspar update status	NONE	UPDATED
Data mode	VFAINT	VFAINT	CCD I0 on	N	N
Observation mode	POINTING	POINTING	CCD I1 on	N	N
[deg] Pointing RA	242.105265	242.1269696272332	CCD I2 on	O1	Y
[deg] Pointing Dec	-39.031430	-39.05308307352807	CCD I3 on	Y	Y
[deg] Pointing Roll	276.988348	277.1586807367092	CCD S0 on	N	N
[mm] SIM focus pos	-0.684267	-0.6828225247311905	CCD S1 on	N	N
[mm] SIM defocus	0	0.001444936568705701	CCD S2 on	Y	Y
[mm] SIM translation stage pos	-190.132523	-190.1400660498719	CCD S3 on	Y	Y
[mm] SIM translation stage offset	0	0.00754346686406393	CCD S4 on	Y	Y
[s] Observation start time (MET)	584716439.184000	584714541.76738	CCD S5 on	N	N
Observation start date	2016-07-12T13:12:51	2016-07-12T12:42:21	Number of optional ACIS chips dropped	0	0
[s] Observation end time (MET)	584734553.184000	584735039.71856	On-chip summing requested	N	N
Observation end date	2016-07-12T18:14:45	2016-07-12T18:23:59	Subarray requested	NONE	NONE
Read mode	TIMED	TIMED	Alternating exposures requested	N	N
			[s] Primary exposure time	0.000000	3.1

2.3 Aspect



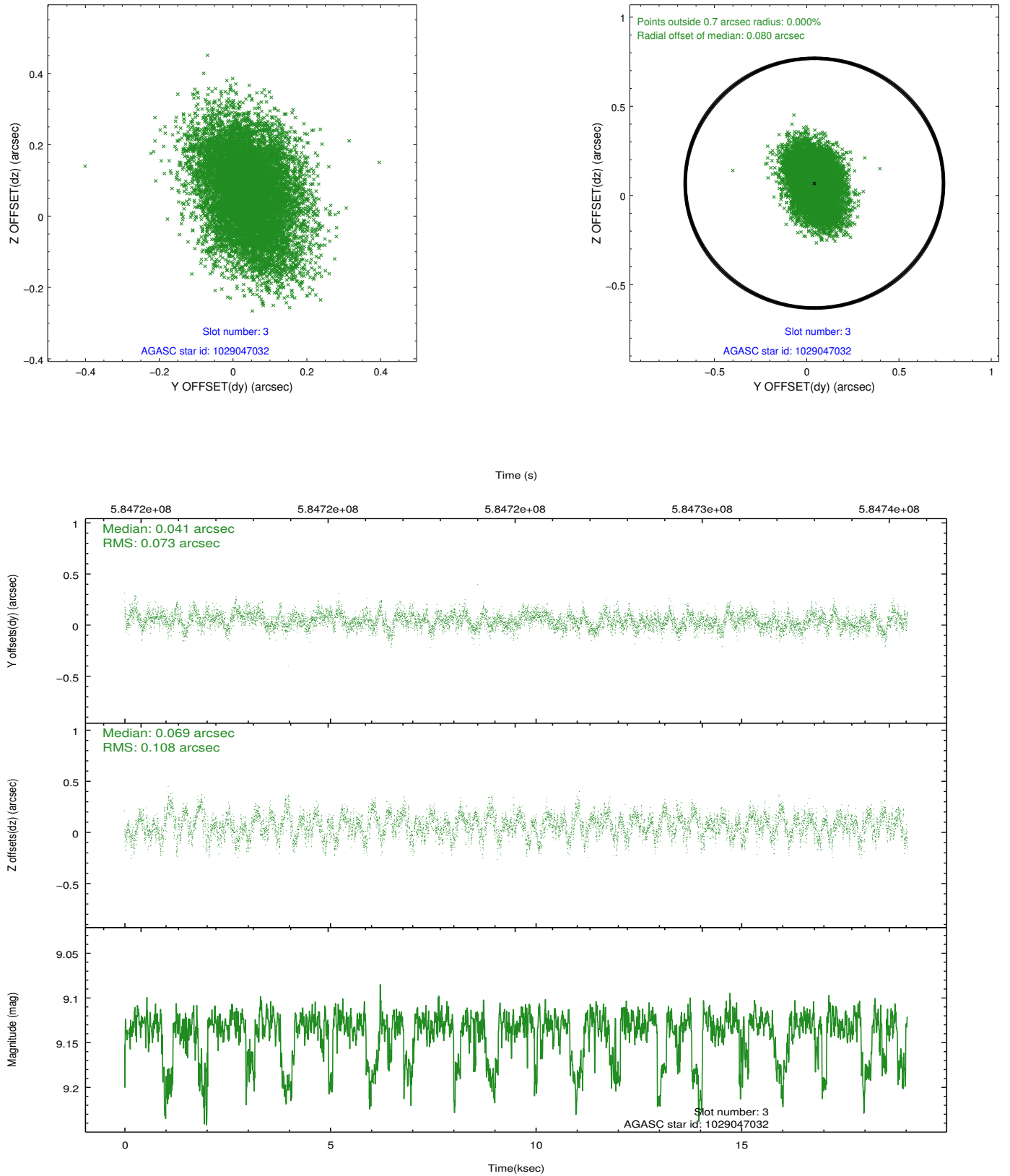


Slot Statistics

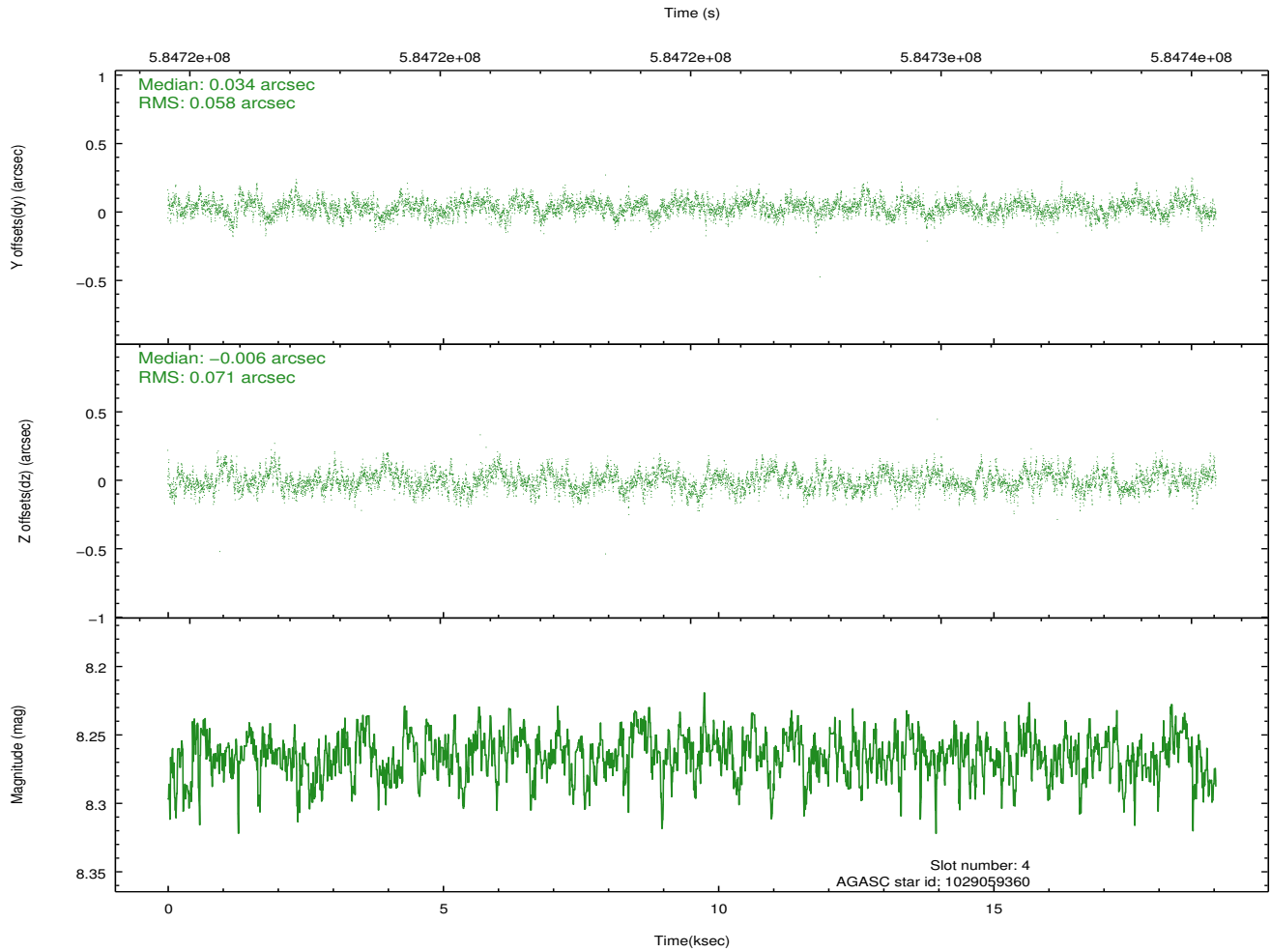
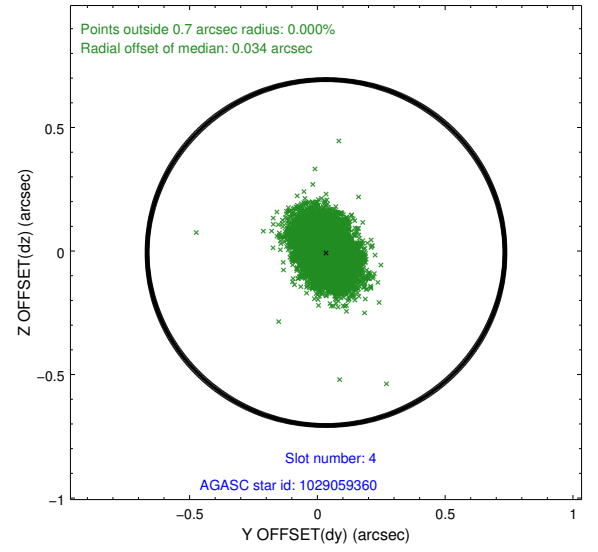
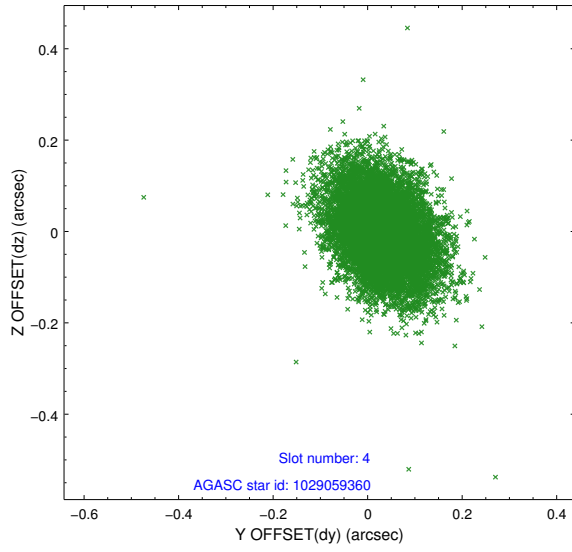
slot	status	used	id	mag	n_pts	med_dy	med_dz	dr1	dr2	ra	dec	mean_y	mean_z
0	FID		ACIS-S-1	7.20	4645	0.129	-0.059	0.014	0.037	0.000000	0.000000	926.80	-1736.40
1	FID		ACIS-S-5	7.23	4645	-0.284	0.063	0.009	0.014	0.000000	0.000000	-1822.57	160.97
2	FID		ACIS-S-6	7.36	4644	0.134	0.008	0.019	0.043	0.000000	0.000000	392.04	805.19
3	GUIDE	used	1029047032	9.13	9277	0.041	0.069	0.139	0.230	241.657214	-39.145122	258.18	-1291.54
4	GUIDE	used	1029059360	8.26	9286	0.034	-0.006	0.096	0.160	241.638388	-39.259513	661.04	-1391.84
5	GUIDE	used	1029580280	9.15	9276	-0.082	-0.317	0.143	0.229	242.322361	-39.646406	2271.78	327.69
6	GUIDE	used	1029048712	9.22	9276	0.196	0.249	0.140	0.232	241.237794	-38.954366	-557.46	-2377.93
7	GUIDE	used	1029179512	7.26	9220	-0.185	0.005	0.077	0.127	242.579529	-38.325821	-2355.07	1638.14

2.4 Star Slots

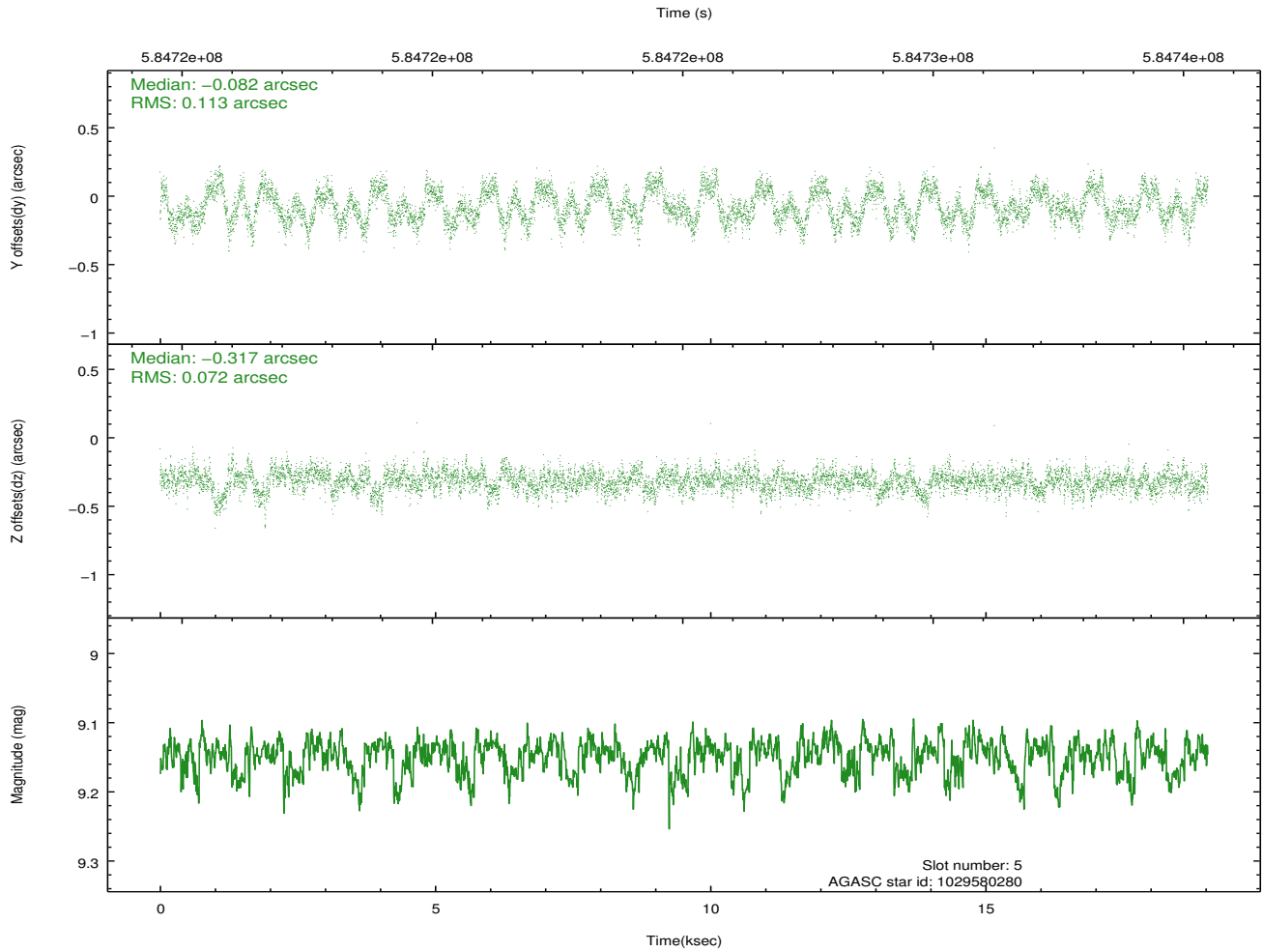
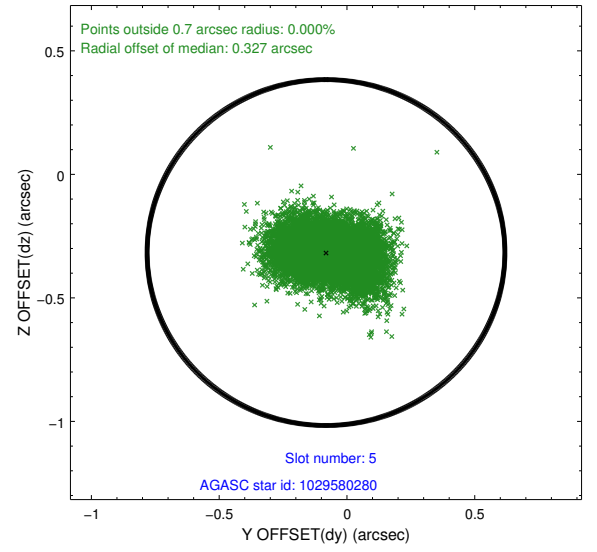
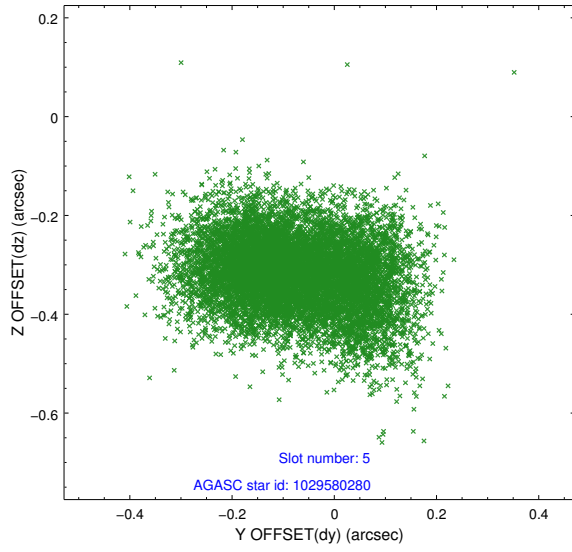
2.4.1 Slot 3



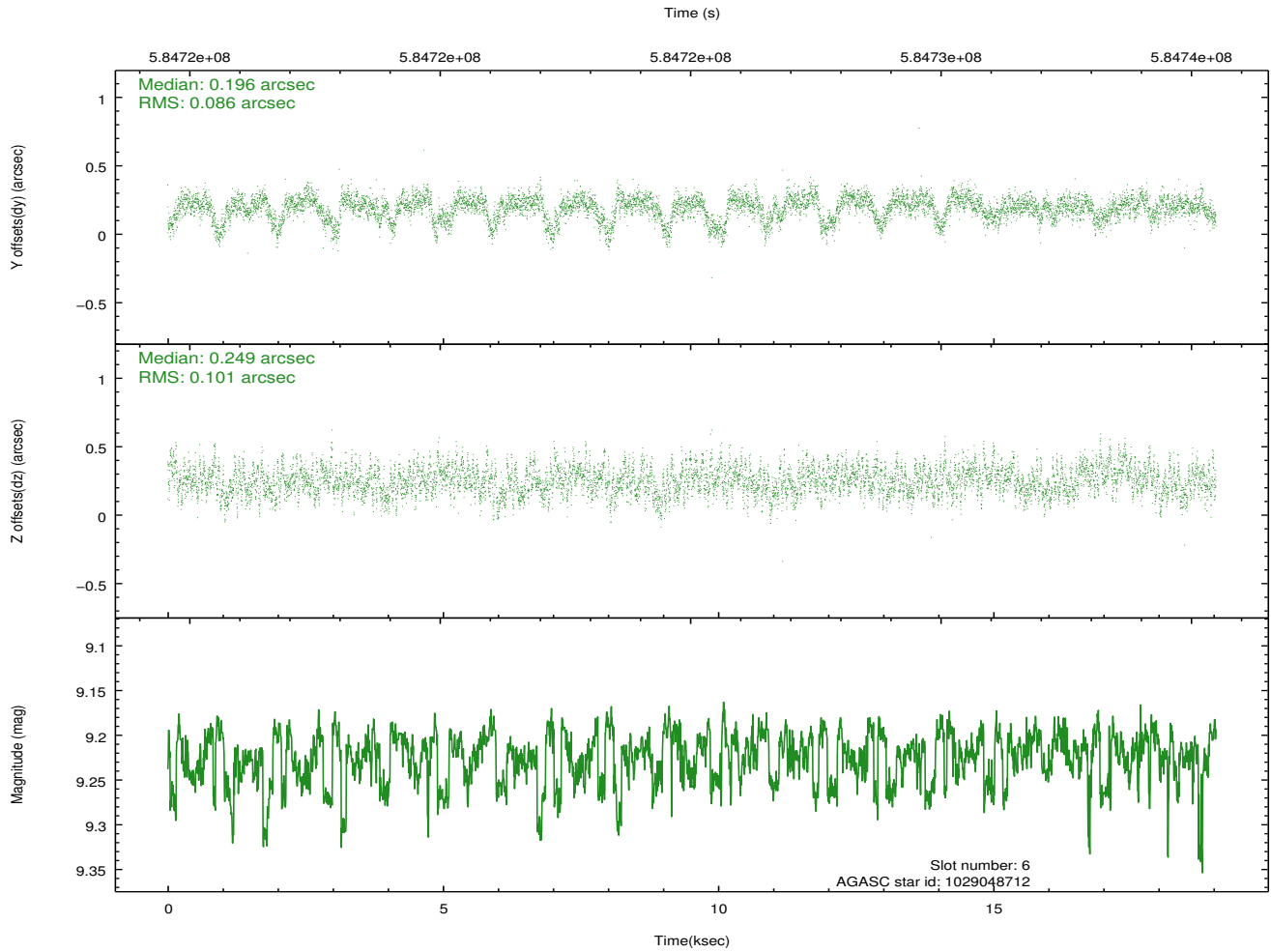
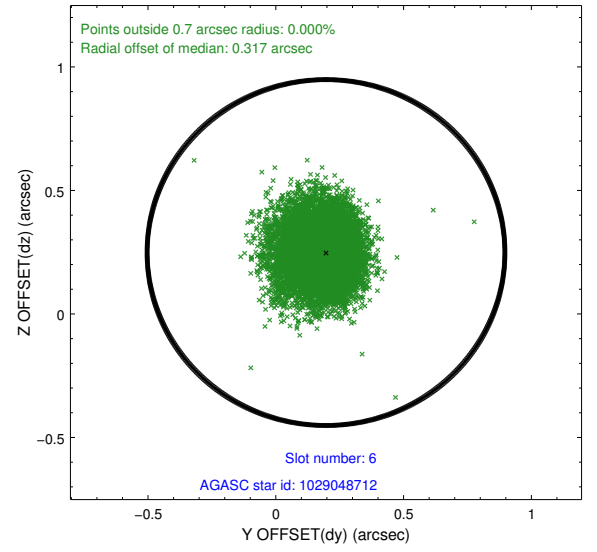
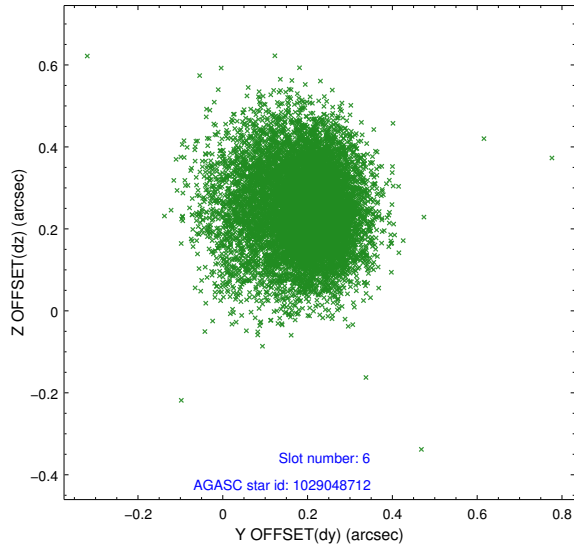
2.4.2 Slot 4



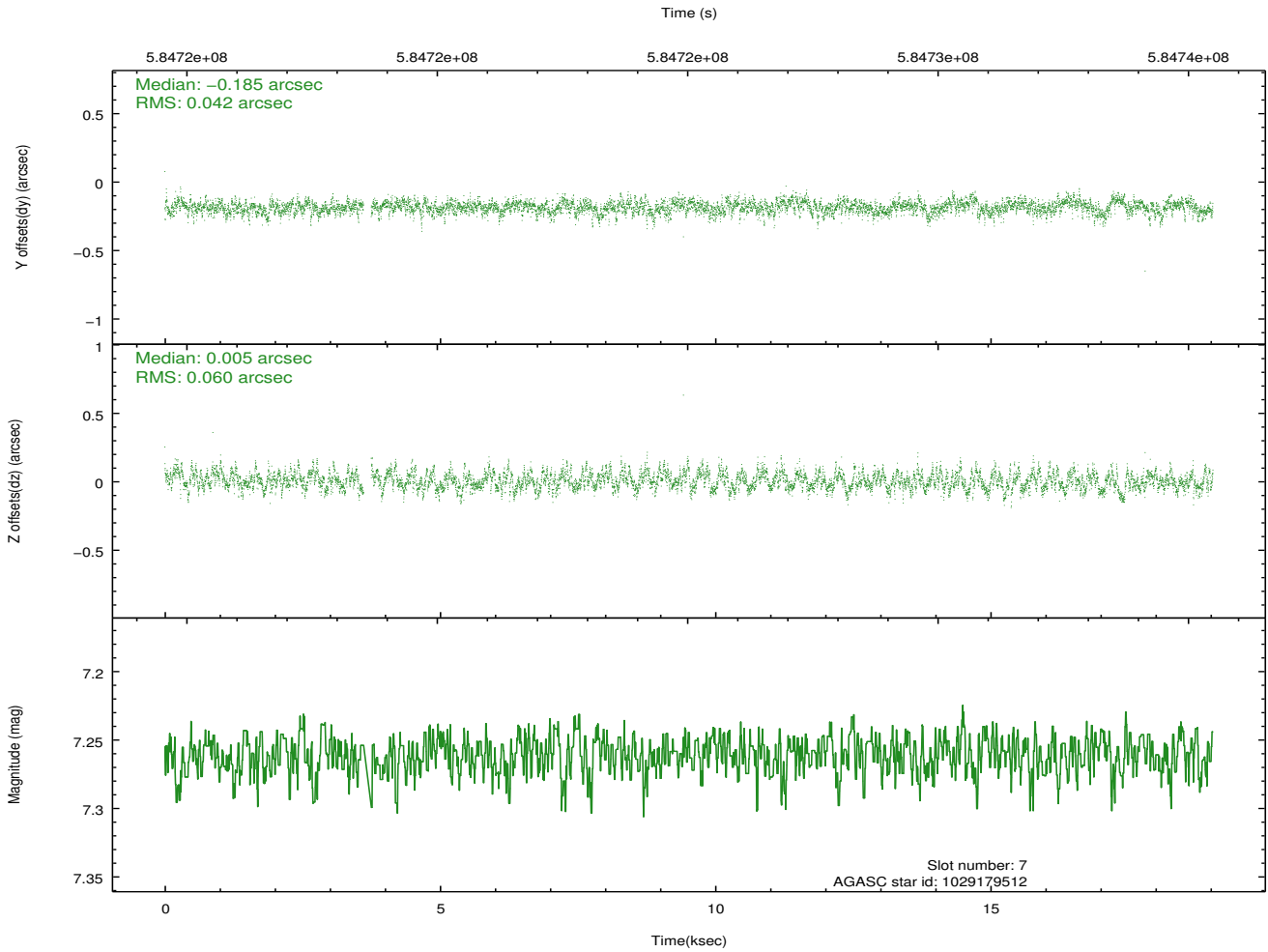
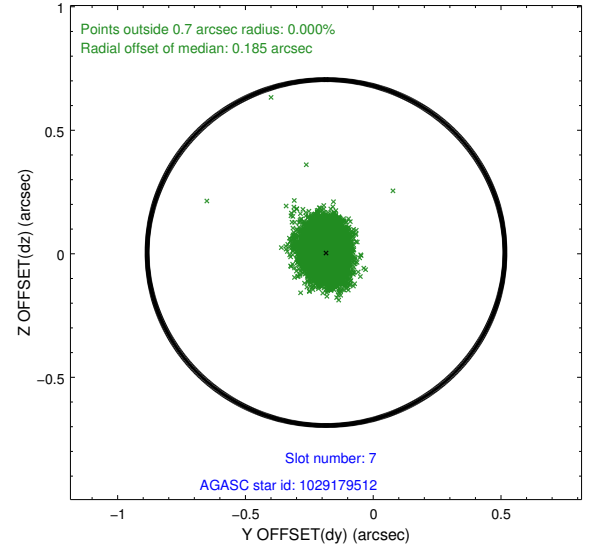
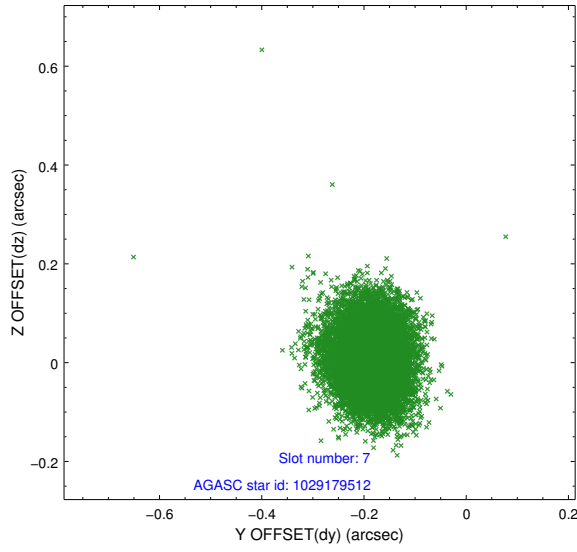
2.4.3 Slot 5



2.4.4 Slot 6

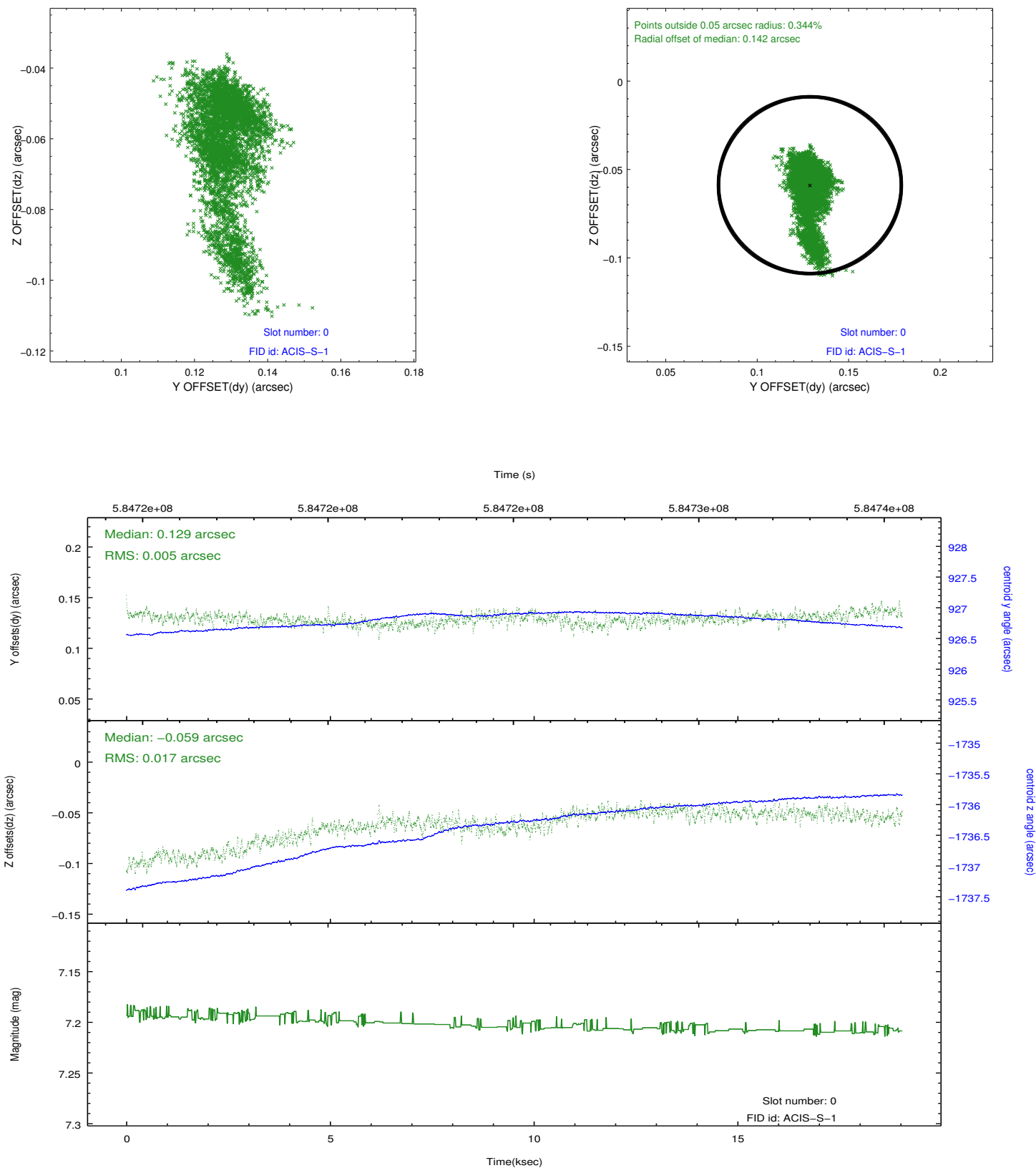


2.4.5 Slot 7

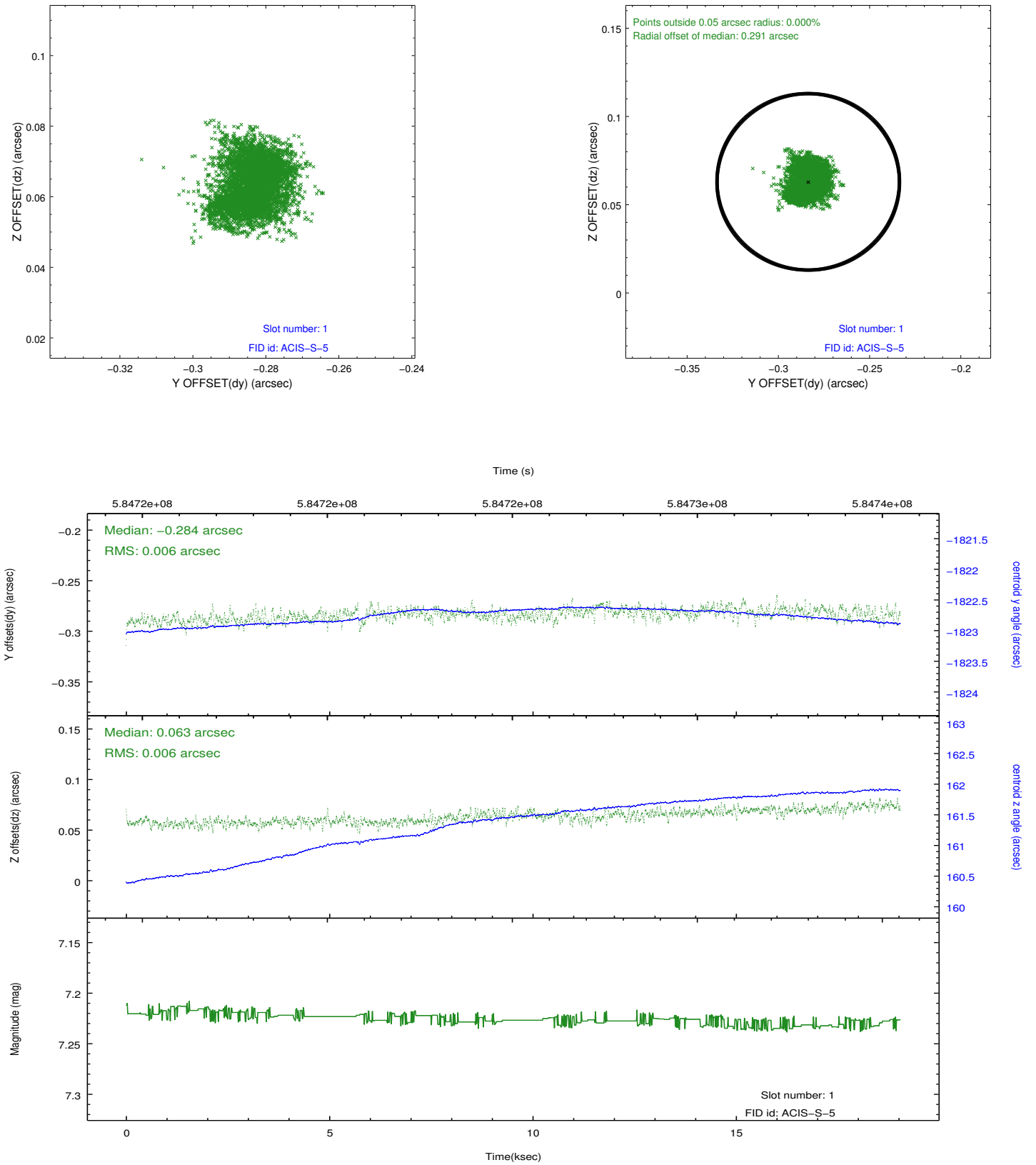


2.5 FID Slots

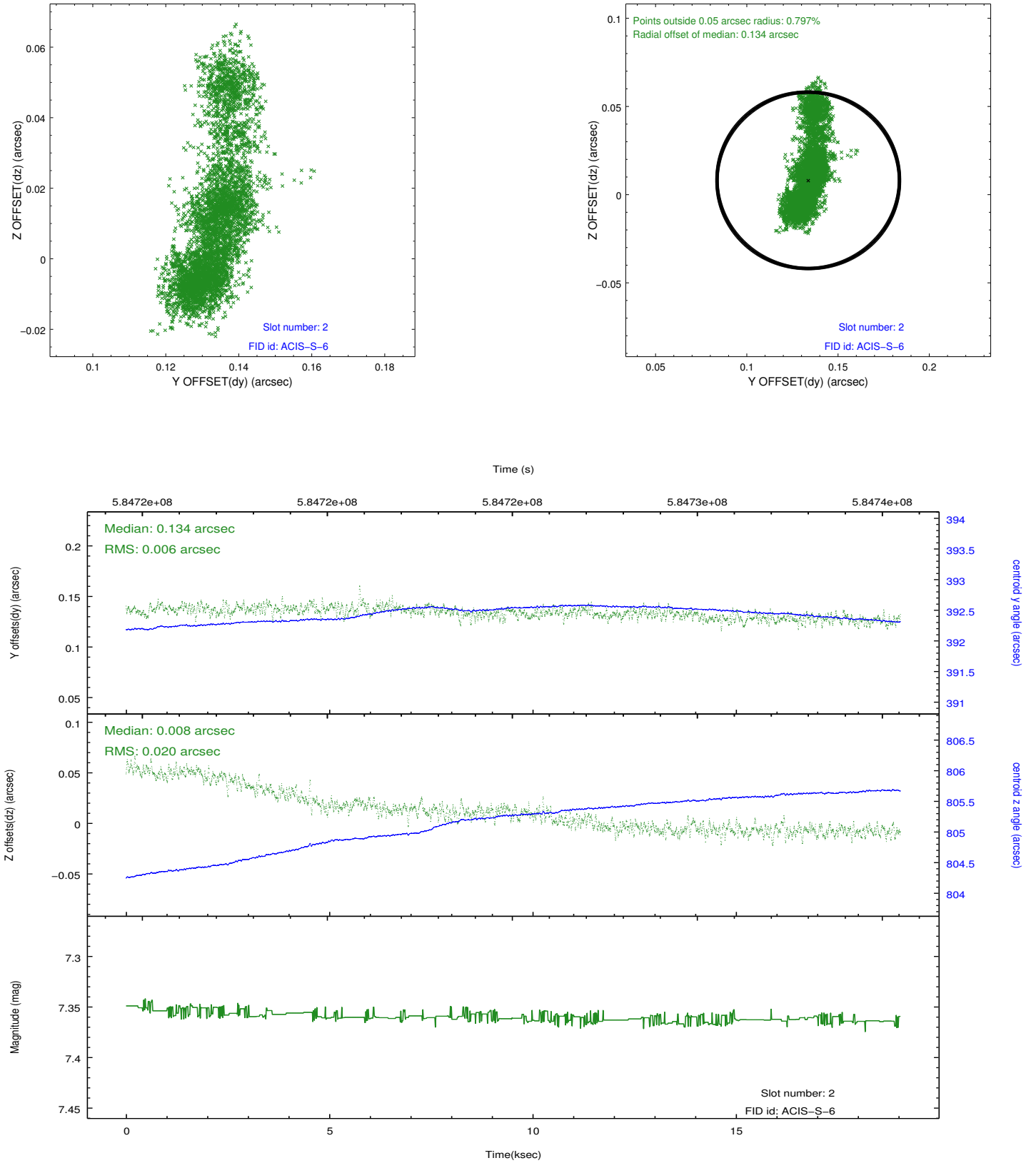
2.5.1 Slot 0



2.5.2 Slot 1



2.5.3 Slot 2



A Summary

A.1 Status

V&V Scientist	Jen Lauer
V&V Date (YYYY-MM-DD)	2016.07.13
V&V Edition	1
V&V Disposition and Status	OK
V&V Charge Time	18.175300139904

A.2 Comments