

V&V Reference Report

L2 ASCDS Version : 10.4.3.1

Observation 17759 - L2 Version 1
Chandra X-Ray Center

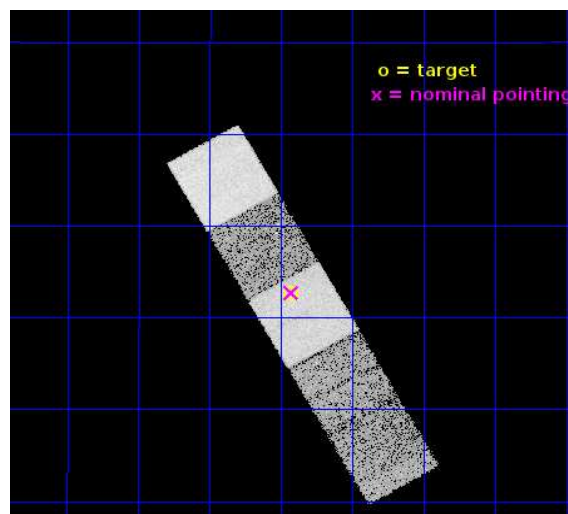
L2 Processing Date : Jan 29 2016

Contents

1	Front	2
2	OBI	3
2.1	OBI	3
2.1.1	Images	3
2.1.2	Bias	3
2.1.3	Parameters	4
2.1.4	Events	4
2.2	Compared Parameters	5
2.3	Aspect	6
2.4	Star Slots	9
2.4.1	Slot 3	9
2.4.2	Slot 4	10
2.4.3	Slot 5	11
2.4.4	Slot 6	12
2.4.5	Slot 7	13
2.5	FID Slots	14
2.5.1	Slot 0	14
2.5.2	Slot 1	15
2.5.3	Slot 2	16
A	Summary	17
A.1	Status	17
A.2	Comments	17

1 Front

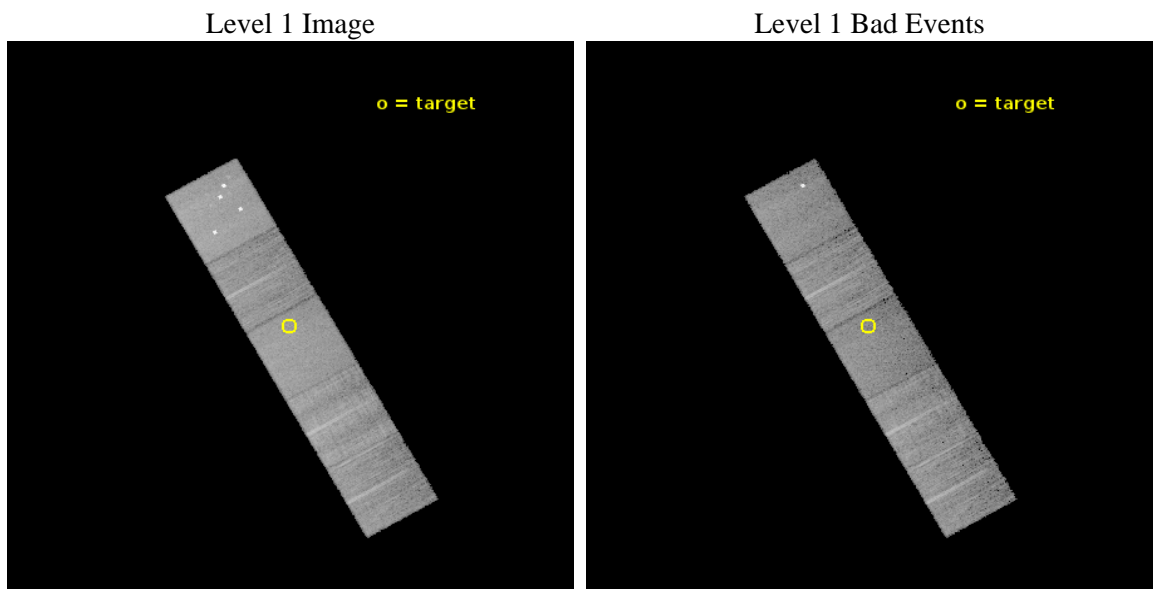
seq_num	201068	Sequence number
obs_id	17759	Observation id
title	Understanding the Rotation/Activity Relation: A New Low-Mass, Extreme-Spin Sample	Proposal title
observer	Dr. Peter Williams	Principal investigator
object	2MASS J10252645+0512391	Source name
dtcycle	0	
cycle	P	events from which exps? Prim/Second/Both
ra_targ	156.359167	Observer's specified target RA [deg]
dec_targ	5.210694	Observer's specified target Dec [deg]
ra_nom	156.35716006436	Nominal RA [deg]
dec_nom	5.2120167817702	Nominal Dec [deg]
roll_nom	60.398447743911	Nominal Roll [deg]
revision	1	Processing version of data
ontime	12052.800092816	Sum of GTIs [s]
livetime	11895.321386461	Livetime [s]
ontime5	12052.800092816	Sum of GTIs [s]
ontime6	12049.658941984	Sum of GTIs [s]
ontime7	12052.800092816	Sum of GTIs [s]
ontime8	12052.800092816	Sum of GTIs [s]
ontime9	12049.659012556	Sum of GTIs [s]
l2events	117491	Number of level 2 events



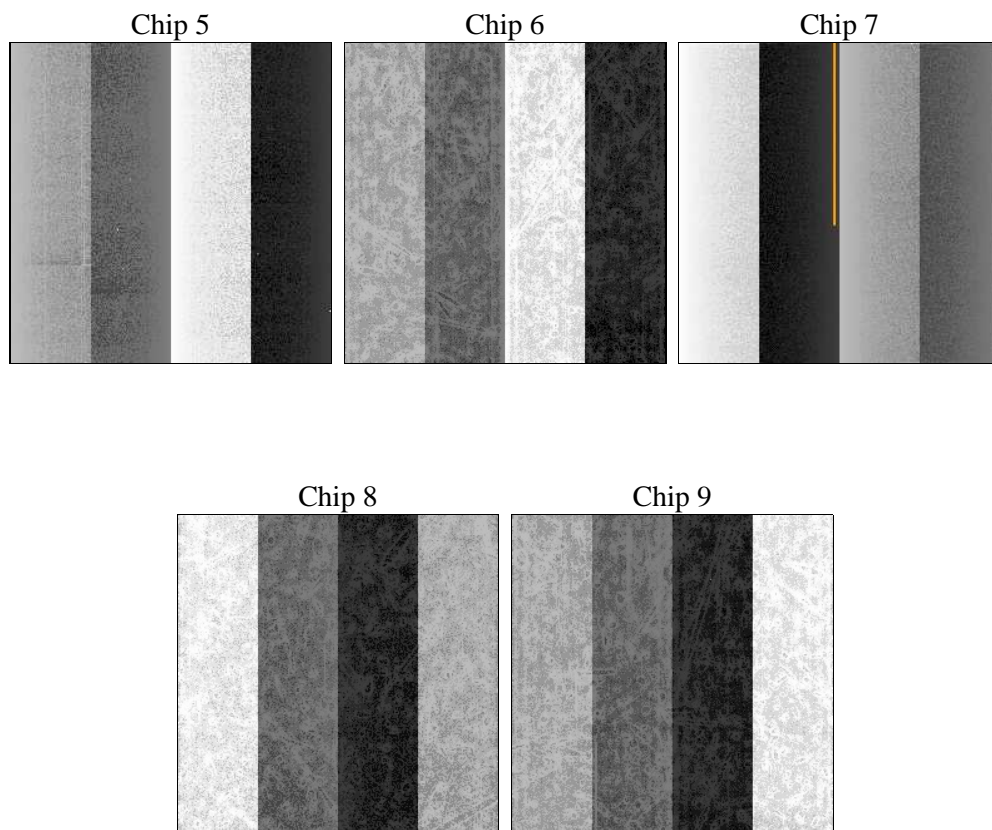
2 OBI

2.1 OBI

2.1.1 Images



2.1.2 Bias



2.1.3 Parameters

obi_num	0	Obi number	sched_exp_time	12000.000000	[s] Scheduled observation exposure time
ascdsver	10.4.3.1	Processing system revision	ontime	12052.800092816	Sum of GTIs [s]
caldsver	4.7.0	 	ontime5	12052.800092816	Sum of GTIs [s]
date	2016-01-29T18:09:01	Date and time of file creation	ontime6	12049.658941984	Sum of GTIs [s]
revision	1	Processing version of data	ontime7	12052.800092816	Sum of GTIs [s]
			ontime8	12052.800092816	Sum of GTIs [s]
			ontime9	12049.659012556	Sum of GTIs [s]
			l1events	485737	Number of level 1 events

2.1.4 Events

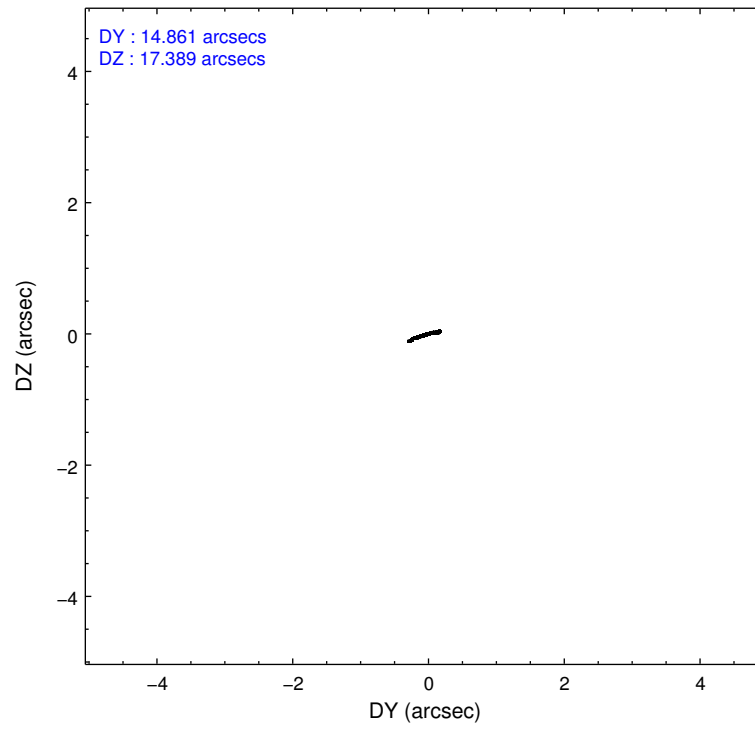
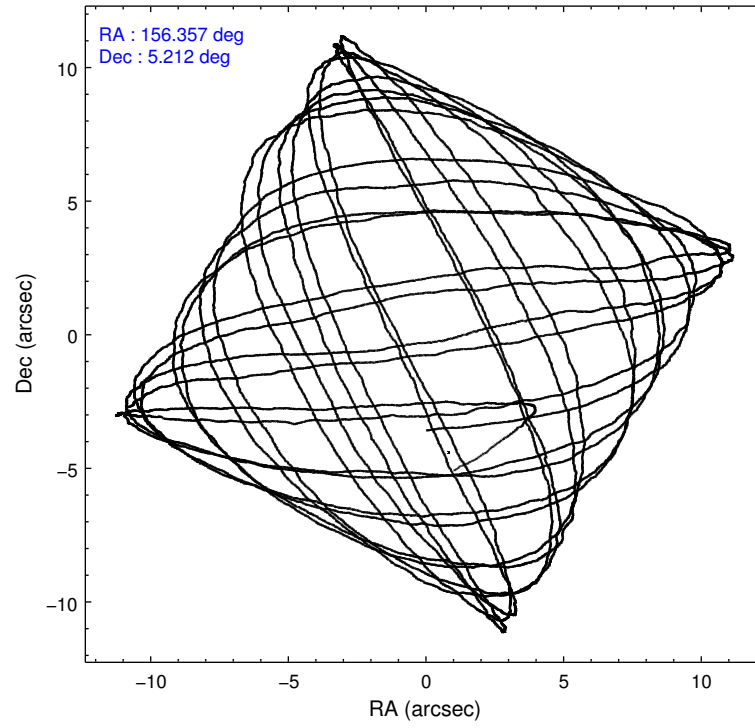
	ccd 5	ccd 6	ccd 7	ccd 8	ccd 9
level 1 events	134234	76724	98203	99886	76690
rejected events	66781	68347	56699	75514	67530
rejected %	49%	89%	57%	75%	88%

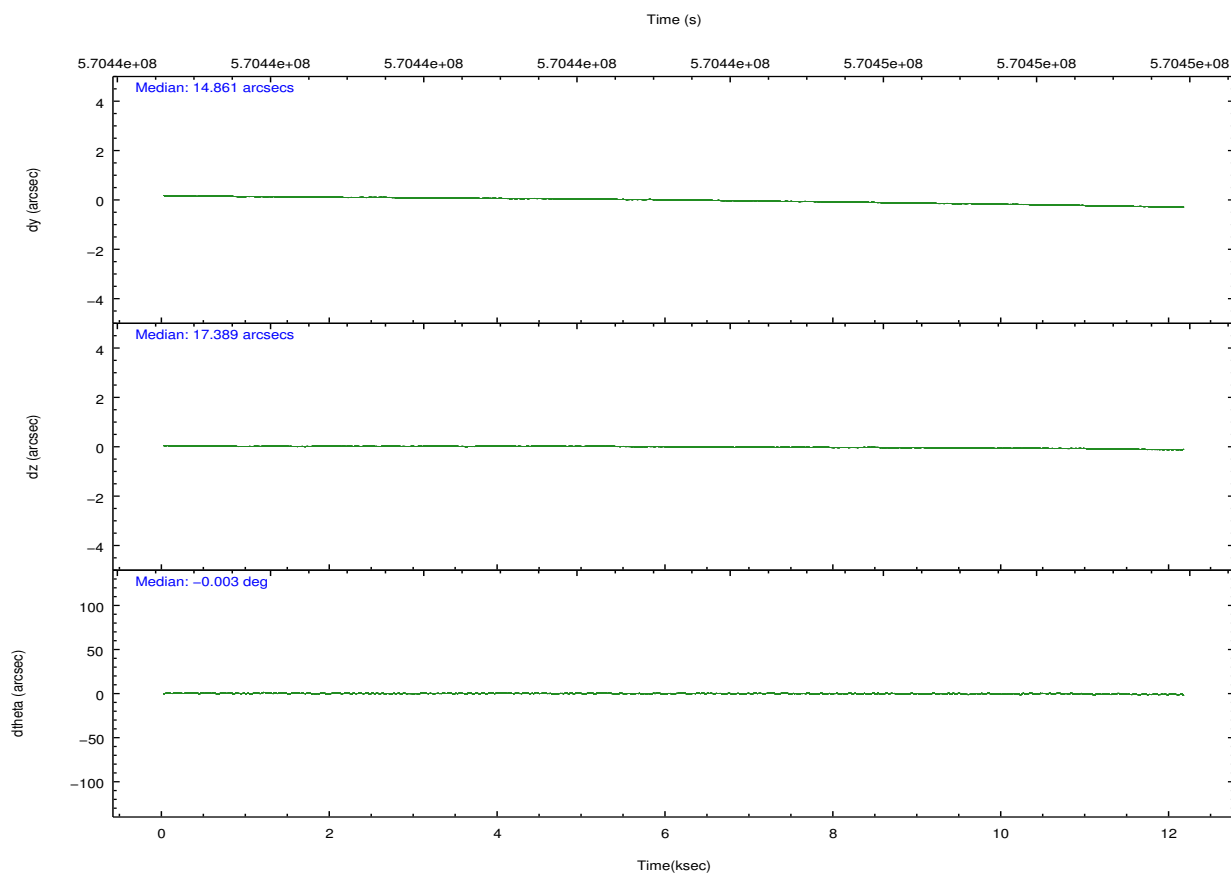
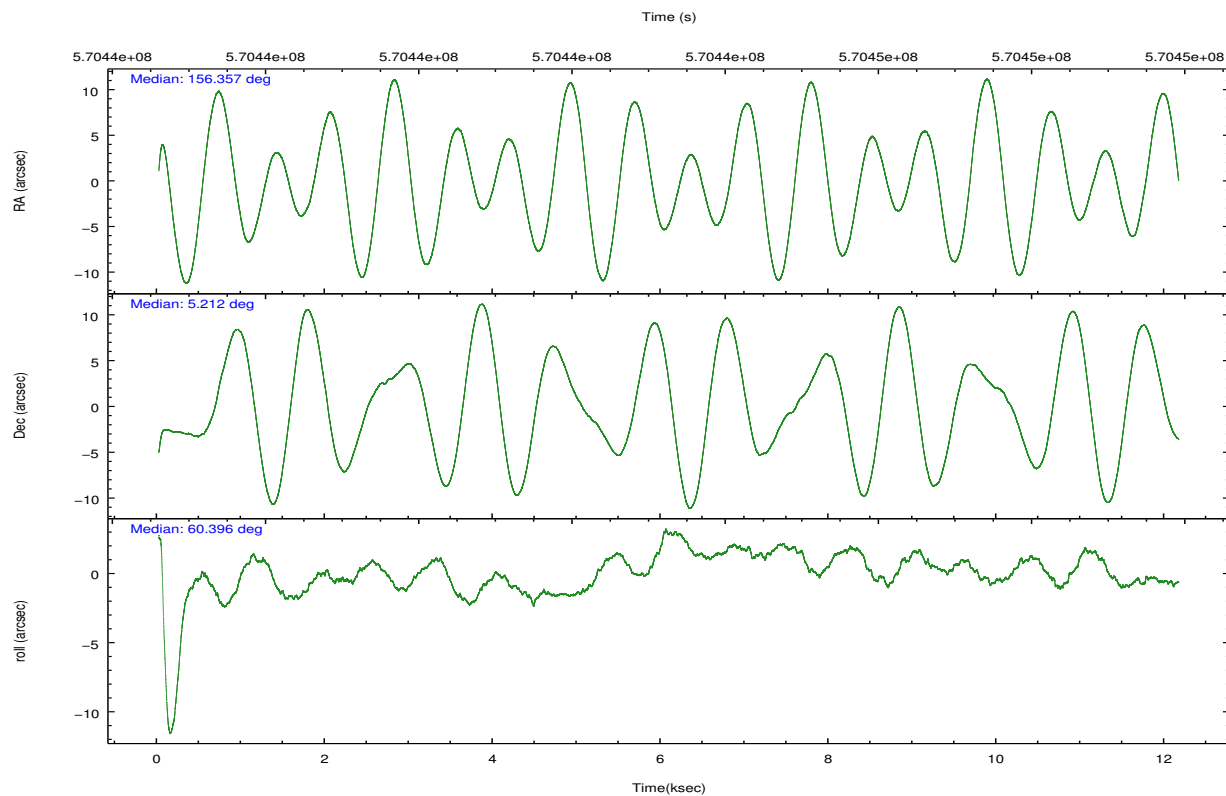
	ccd 5	ccd 6	ccd 7	ccd 8	ccd 9
grade 0 events	14568	2602	3342	7002	3167
	10%	3%	3%	7%	4%
grade 1 events	279	29	131	57	47
	0%	0%	0%	0%	0%
grade 2 events	18043	2148	8543	5929	2117
	13%	2%	8%	5%	2%
grade 3 events	1659	792	3179	2466	881
	1%	1%	3%	2%	1%
grade 4 events	1521	791	3003	2301	923
	1%	1%	3%	2%	1%
grade 5 events	7947	3410	9374	5162	4005
	5%	4%	9%	5%	5%
grade 6 events	31705	2053	23456	6681	2074
	23%	2%	23%	6%	2%
grade 7 events	58512	64899	47175	70288	63476
	43%	84%	48%	70%	82%

2.2 Compared Parameters

Parameter	Planned	Actual	Parameter	Planned	Actual
Instrument	ACIS	ACIS	Obspar format version number	7	7
Detector	ACIS-56789	ACIS-56789	Obspar file type	PREDICTED	ACTUAL
Grating	NONE	NONE	Obspar update status	NONE	UPDATED
Data mode	VFAINT	VFAINT	CCD I0 on	N	N
Observation mode	POINTING	POINTING	CCD I1 on	N	N
[deg] Pointing RA	156.357719	156.3571600643602	CCD I2 on	O1	N
[deg] Pointing Dec	5.184586	5.212016781770208	CCD I3 on	N	N
[deg] Pointing Roll	60.241752	60.398447743911	CCD S0 on	N	N
[mm] SIM focus pos	-0.684267	-0.6828225247311905	CCD S1 on	O3	Y
[mm] SIM defocus	0	0.001444936568705701	CCD S2 on	O5	Y
[mm] SIM translation stage pos	-190.132523	-190.1425803651734	CCD S3 on	Y	Y
[mm] SIM translation stage offset	0	0.01005778216563158	CCD S4 on	O4	Y
[s] Observation start time (MET)	570437364.184000	570436087.04103	CCD S5 on	O2	Y
Observation start date	2016-01-29T06:48:16	2016-01-29T06:28:07	Number of optional ACIS chips dropped	1	1
[s] Observation end time (MET)	570449364.184000	570449982.45432	On-chip summing requested	N	N
Observation end date	2016-01-29T10:08:16	2016-01-29T10:19:42	Subarray requested	NONE	NONE
Read mode	TIMED	TIMED	Alternating exposures requested	N	N
			[s] Primary exposure time	0.000000	3.1

2.3 Aspect



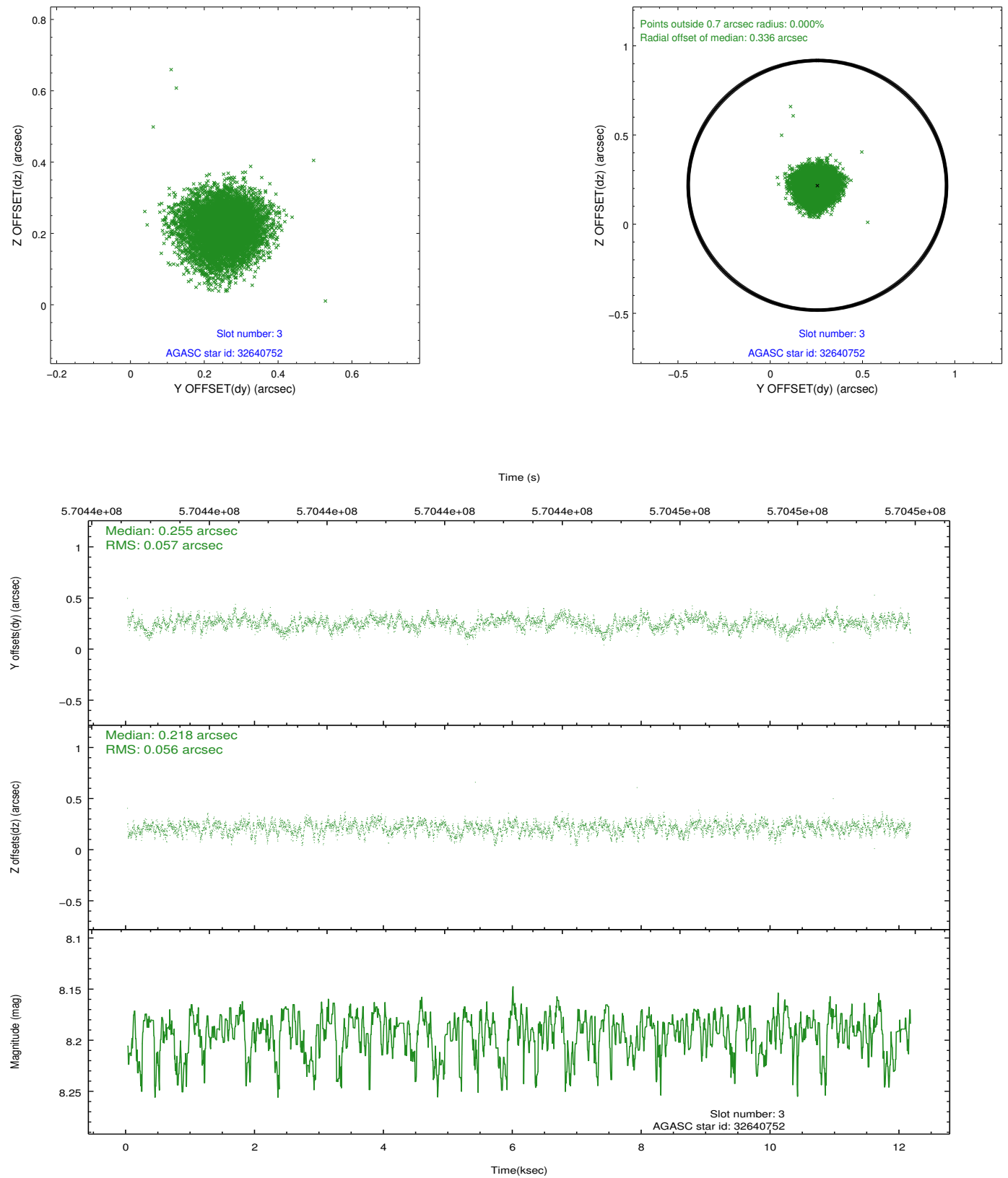


Slot Statistics

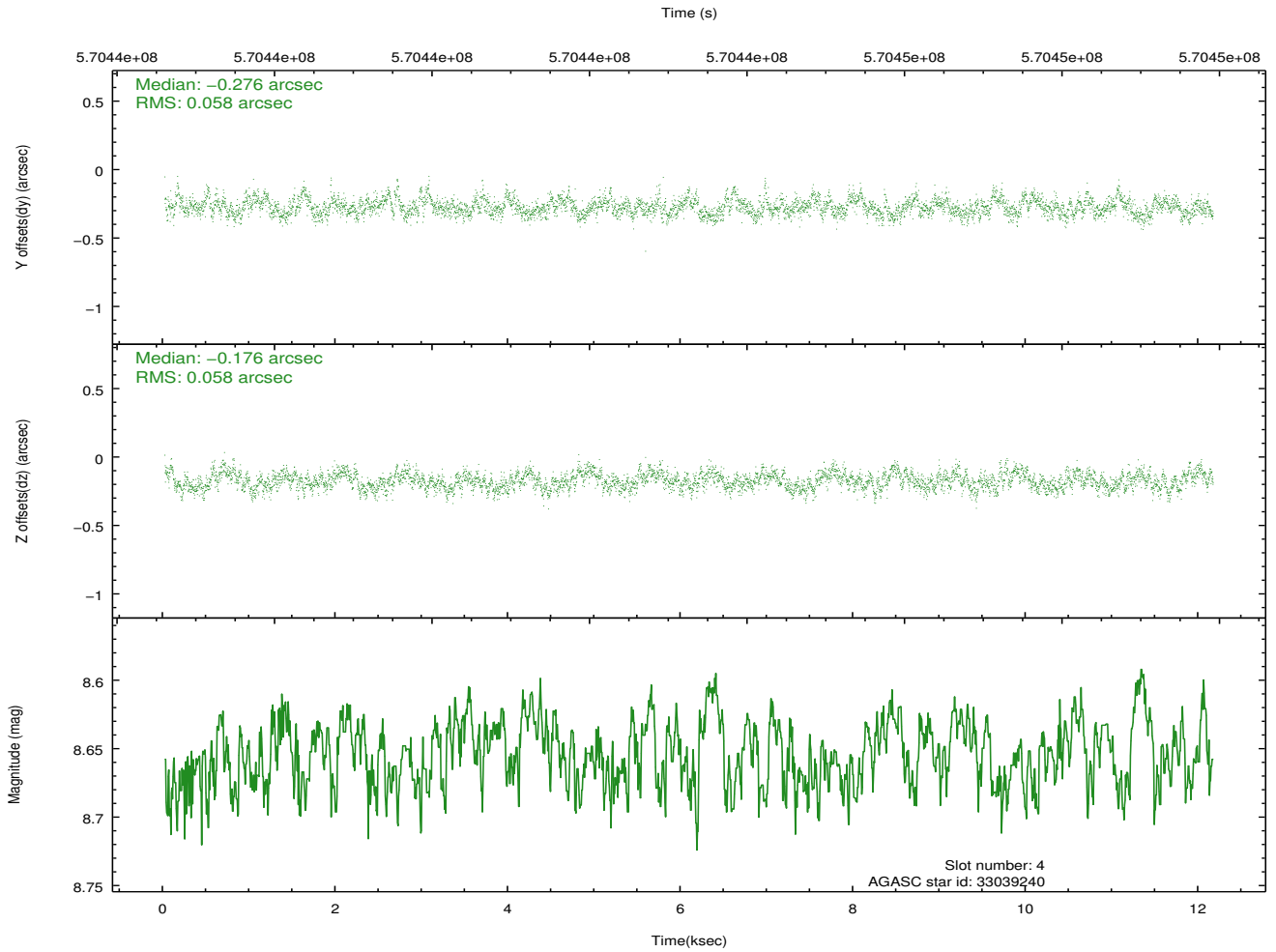
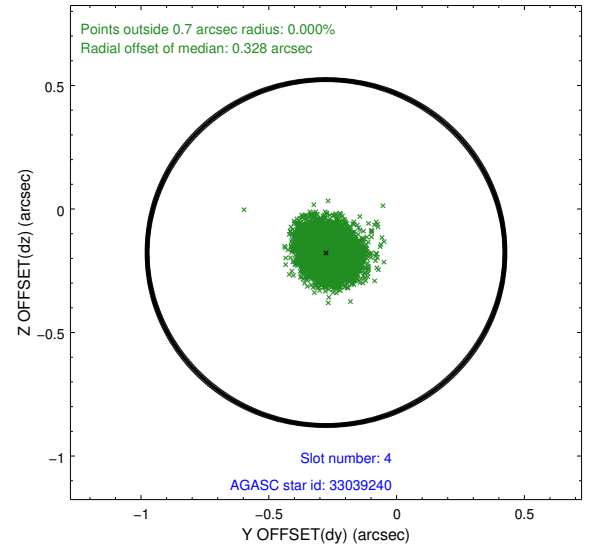
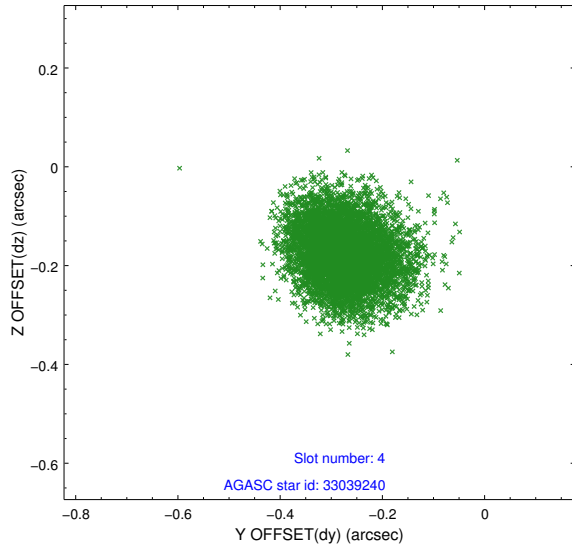
slot	status	used	id	mag	n_pts	med_dy	med_dz	dr1	dr2	ra	dec	mean_y	mean_z
0	FID		ACIS-S-2	7.13	2963	-0.157	-0.116	0.007	0.012	0.000000	0.000000	-767.97	-1738.87
1	FID		ACIS-S-4	7.22	2964	0.414	0.107	0.006	0.011	0.000000	0.000000	2145.71	169.38
2	FID		ACIS-S-5	7.24	2964	-0.289	0.019	0.007	0.012	0.000000	0.000000	-1820.41	163.46
3	GUIDE	used	32640752	8.19	5927	0.255	0.218	0.085	0.134	156.390412	4.571973	-1855.57	-1195.41
4	GUIDE	used	33039240	8.65	5924	-0.276	-0.176	0.087	0.140	156.351910	5.865675	2117.86	1234.62
5	GUIDE	used	33039728	9.39	5921	-0.346	0.076	0.143	0.234	156.323867	5.285313	255.01	285.78
6	GUIDE	used	33040976	8.65	5923	0.220	0.142	0.126	0.201	156.365965	5.106141	-230.26	-164.86
7	GUIDE	used	33041200	7.77	5927	0.146	-0.244	0.122	0.190	156.339084	5.177039	-56.26	44.77

2.4 Star Slots

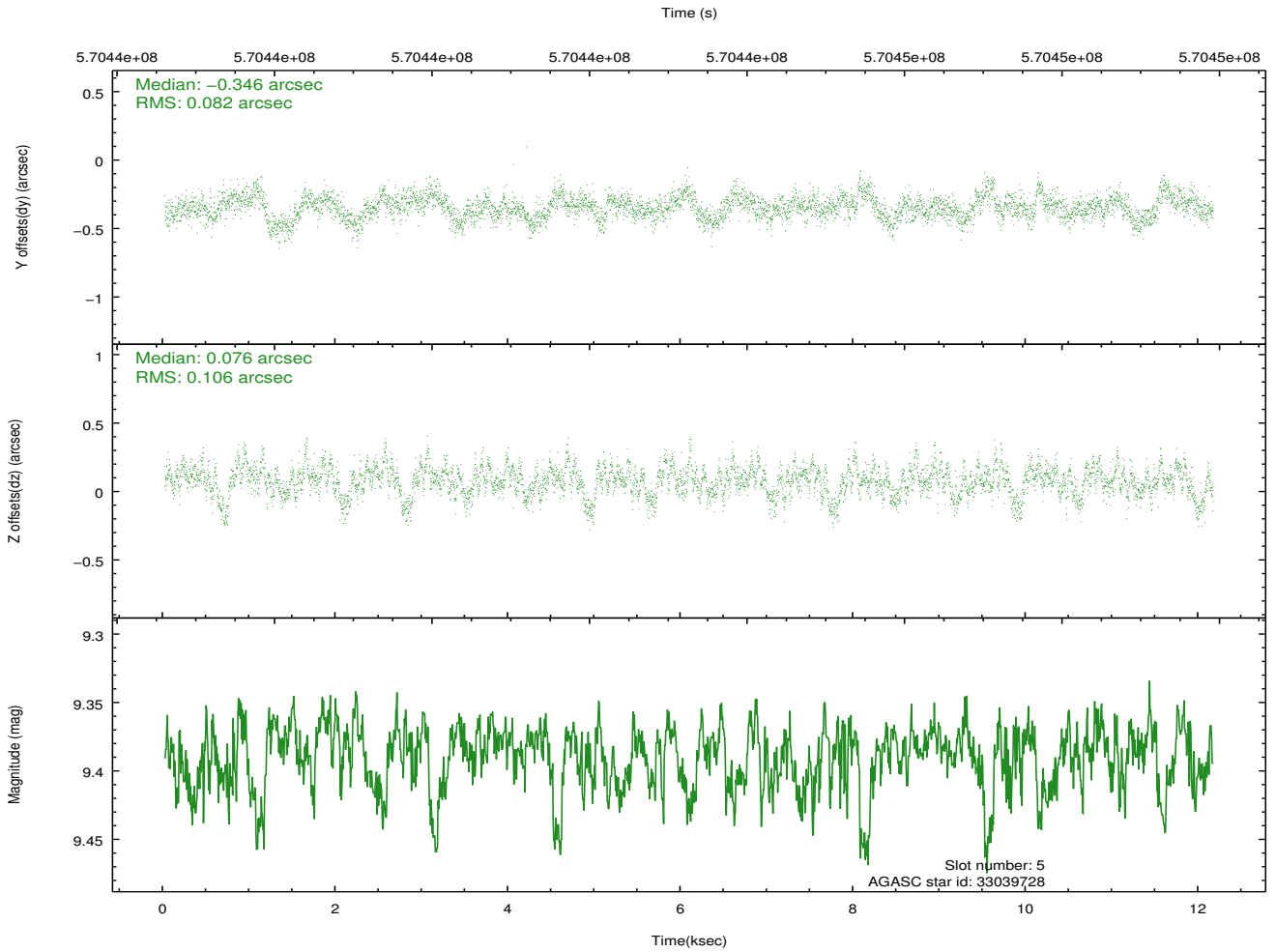
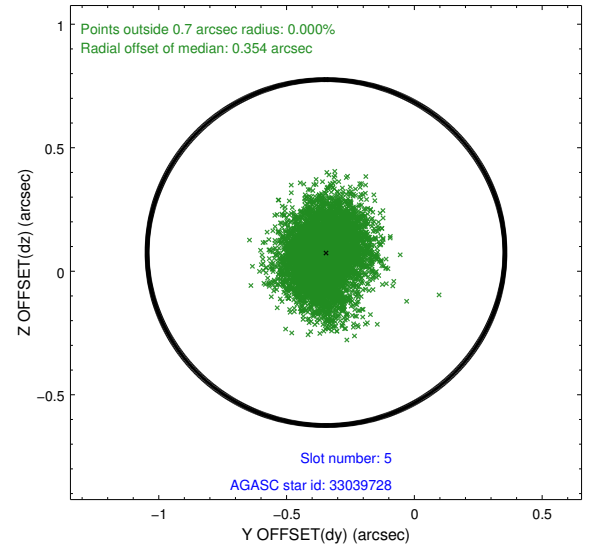
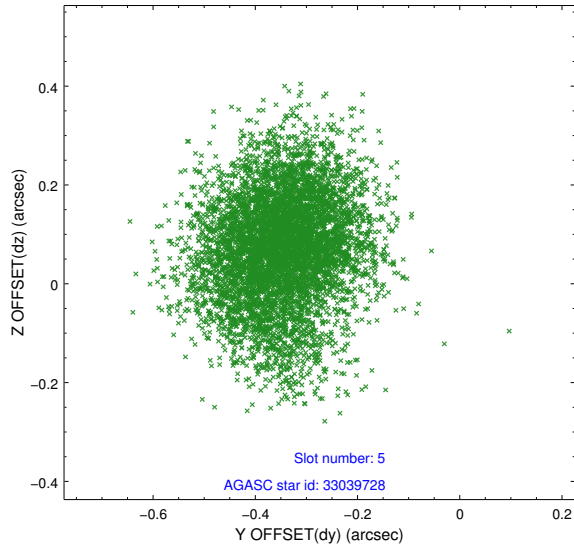
2.4.1 Slot 3



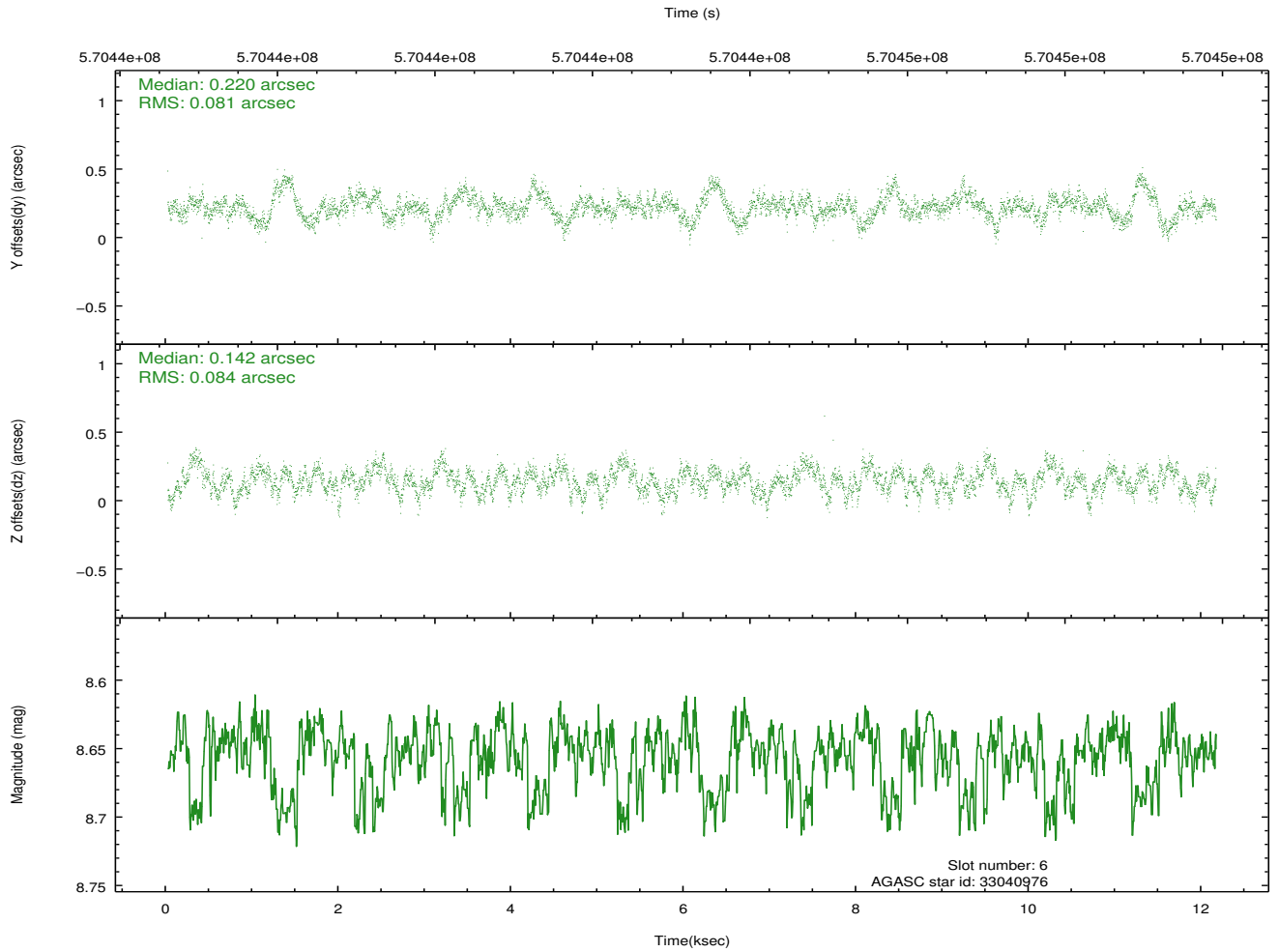
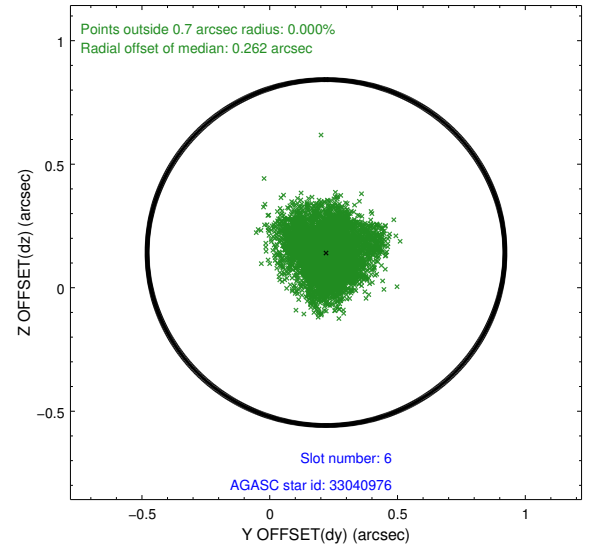
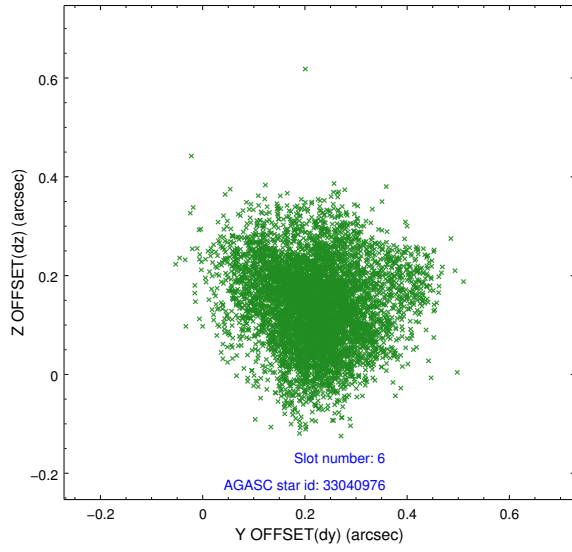
2.4.2 Slot 4



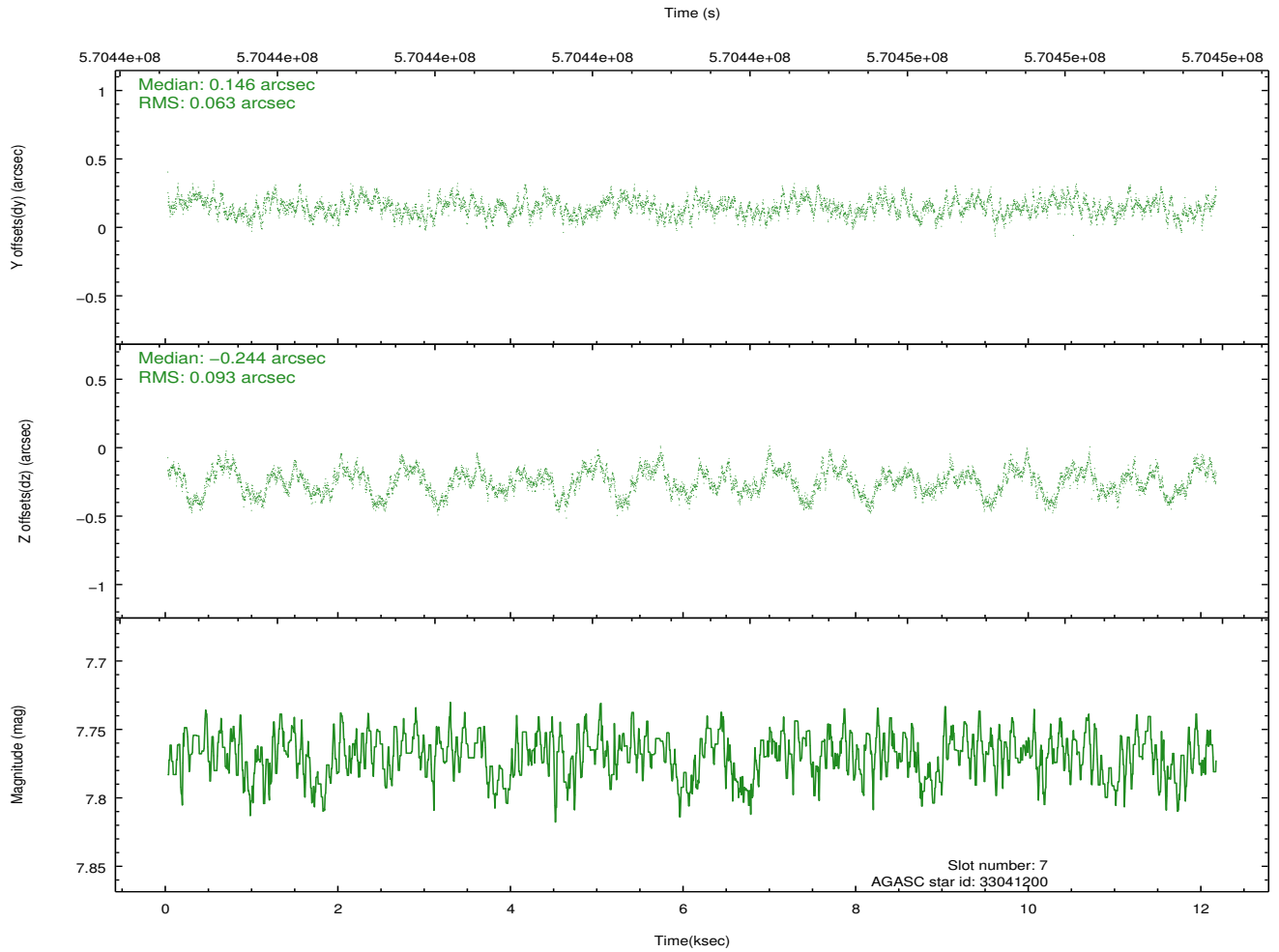
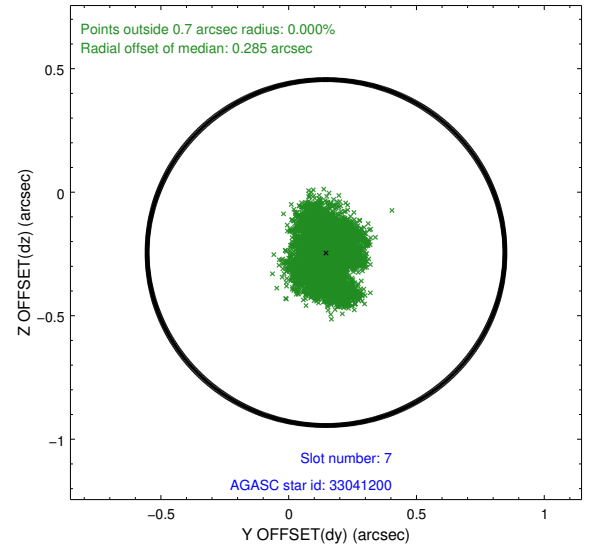
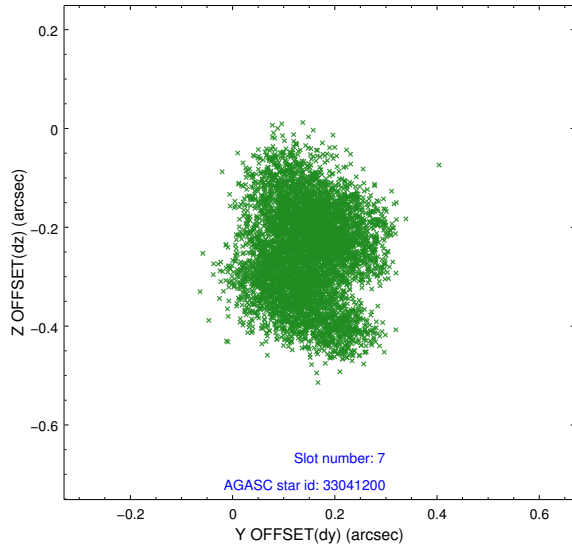
2.4.3 Slot 5



2.4.4 Slot 6

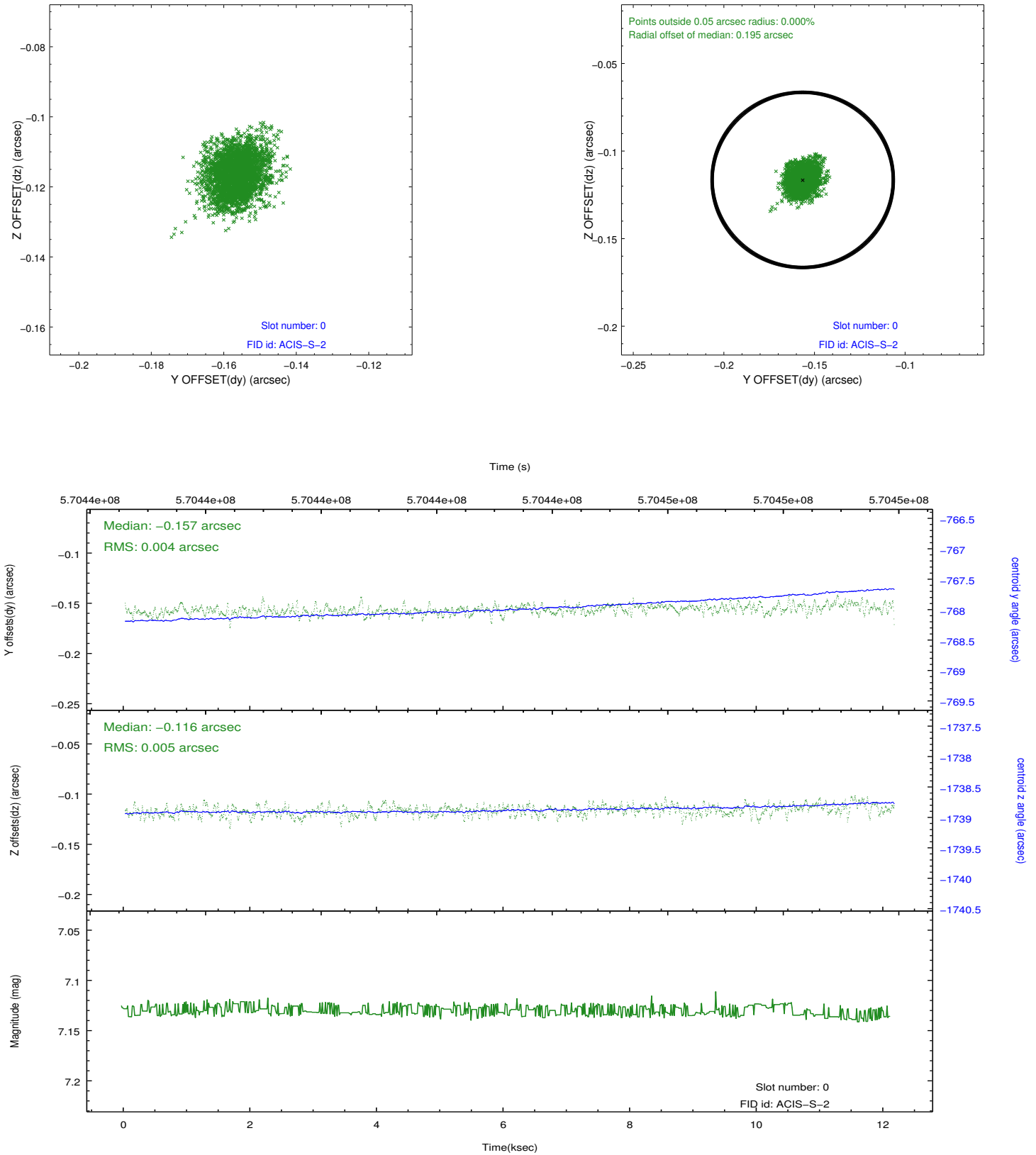


2.4.5 Slot 7

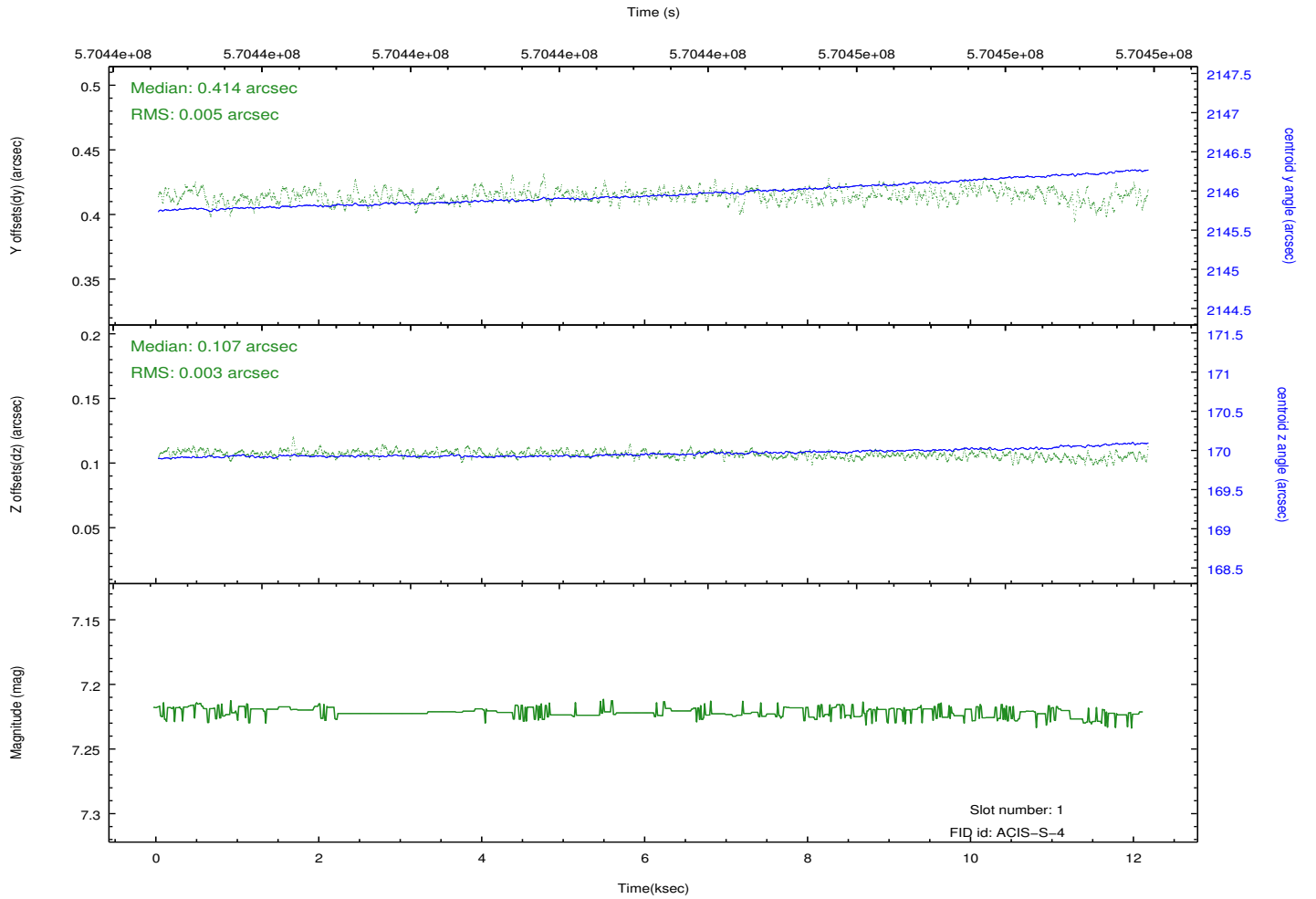
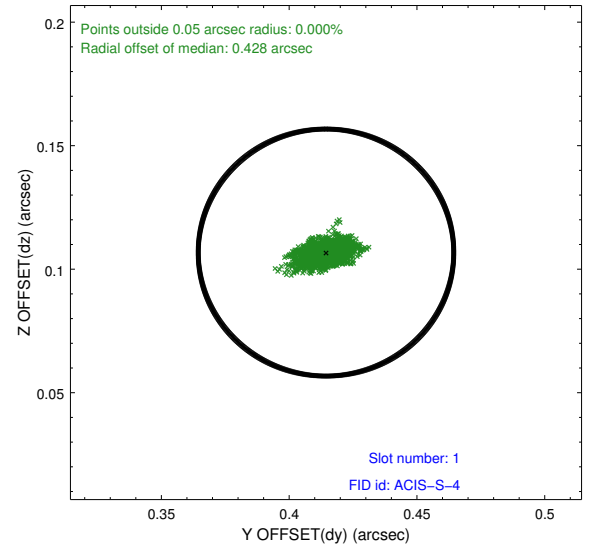
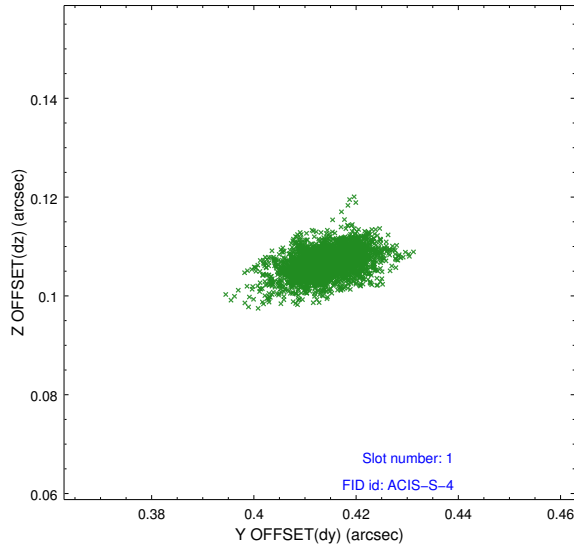


2.5 FID Slots

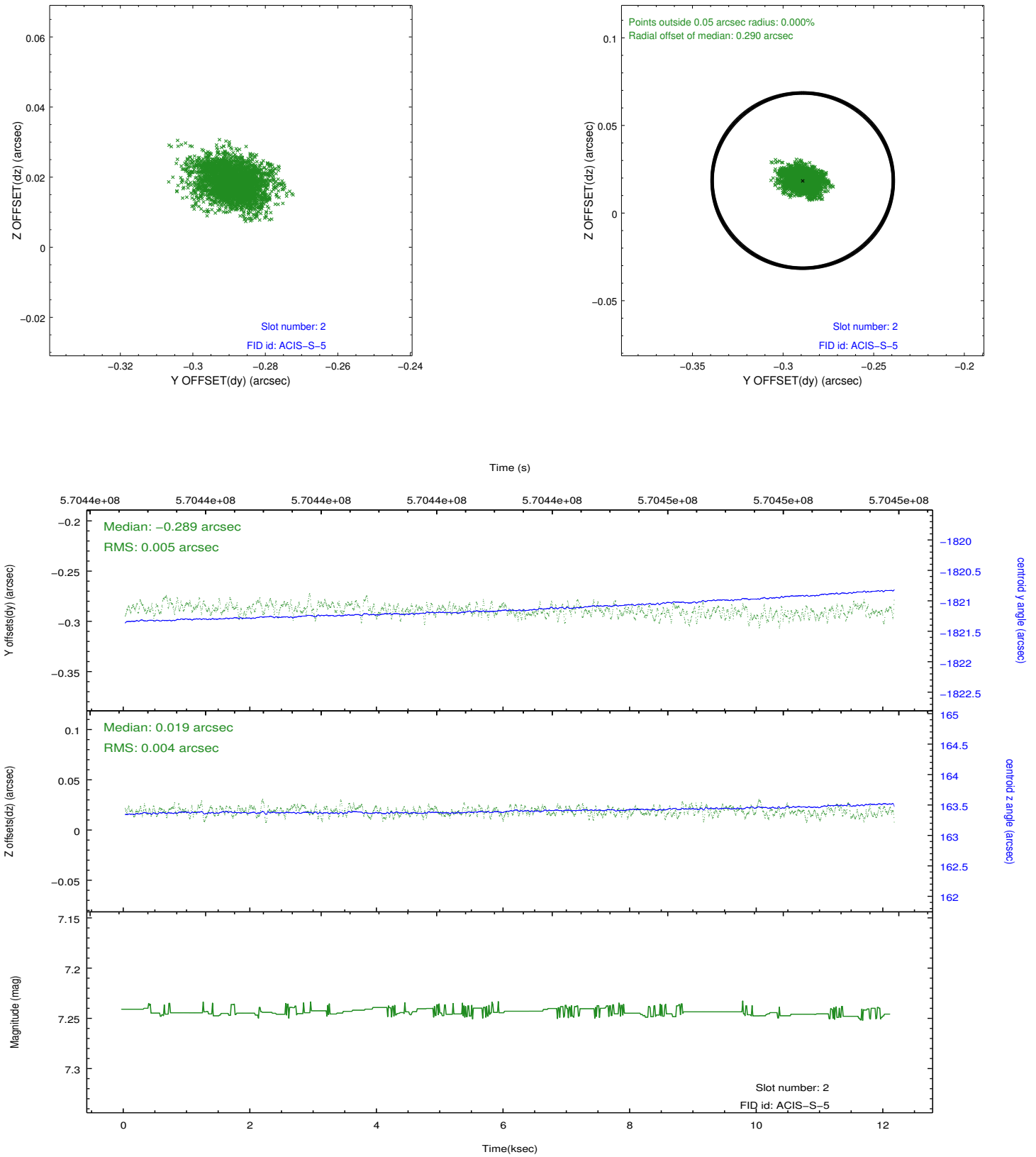
2.5.1 Slot 0



2.5.2 Slot 1



2.5.3 Slot 2



A Summary

A.1 Status

V&V Scientist	Jen Lauer
V&V Date (YYYY-MM-DD)	2016.01.29
V&V Edition	1
V&V Disposition and Status	OK
V&V Charge Time	12.052800092816

A.2 Comments

Joint Proposal: Swift. Optional chip I2 not used.