

V&V Reference Report

L2 ASCDS Version : 10.4.3

Observation 17757 - L2 Version 1
Chandra X-Ray Center

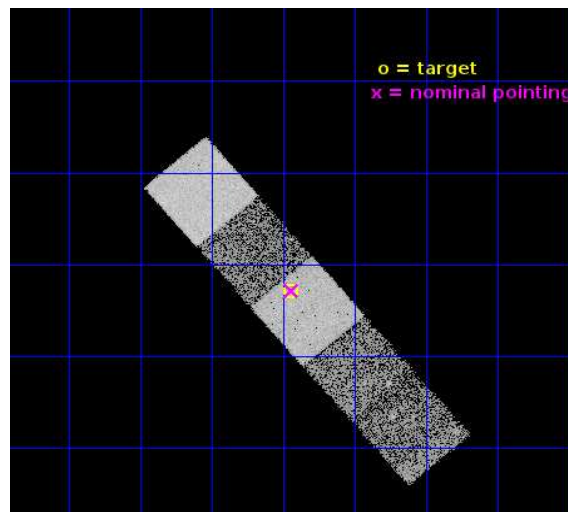
L2 Processing Date : Dec 28 2015

Contents

1	Front	2
2	OBI	3
2.1	OBI	3
2.1.1	Images	3
2.1.2	Bias	3
2.1.3	Parameters	4
2.1.4	Events	4
2.2	Compared Parameters	5
2.3	Aspect	6
2.4	Star Slots	9
2.4.1	Slot 3	9
2.4.2	Slot 4	10
2.4.3	Slot 5	11
2.4.4	Slot 6	12
2.4.5	Slot 7	13
2.5	FID Slots	14
2.5.1	Slot 0	14
2.5.2	Slot 1	15
2.5.3	Slot 2	16
A	Summary	17
A.1	Status	17
A.2	Comments	17

1 Front

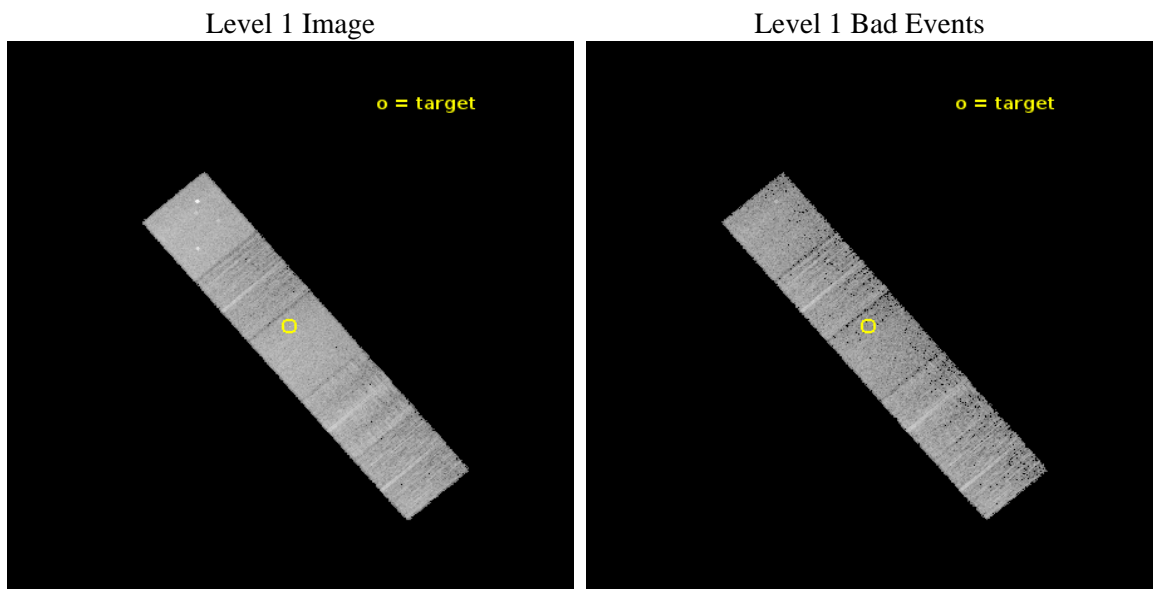
seq_num	201066	Sequence number
obs_id	17757	Observation id
title	Understanding the Rotation/Activity Relation: A New Low-Mass, Extreme-Spin Sample	Proposal title
observer	Dr. Peter Williams	Principal investigator
object	2MASS J08055713+0417035	Source name
dtcycle	0	
cycle	P	events from which exps? Prim/Second/Both
ra_targ	121.487083	Observer's specified target RA [deg]
dec_targ	4.284306	Observer's specified target Dec [deg]
ra_nom	121.48537816758	Nominal RA [deg]
dec_nom	4.2860350854736	Nominal Dec [deg]
roll_nom	49.499195956997	Nominal Roll [deg]
revision	1	Processing version of data
ontime	7573.1609617472	Sum of GTIs [s]
livetime	7474.212038502	Livetime [s]
ontime5	7573.1199218035	Sum of GTIs [s]
ontime6	7573.0788817406	Sum of GTIs [s]
ontime7	7573.1609617472	Sum of GTIs [s]
ontime8	7573.0378417969	Sum of GTIs [s]
ontime9	7572.996801734	Sum of GTIs [s]
l2events	73082	Number of level 2 events



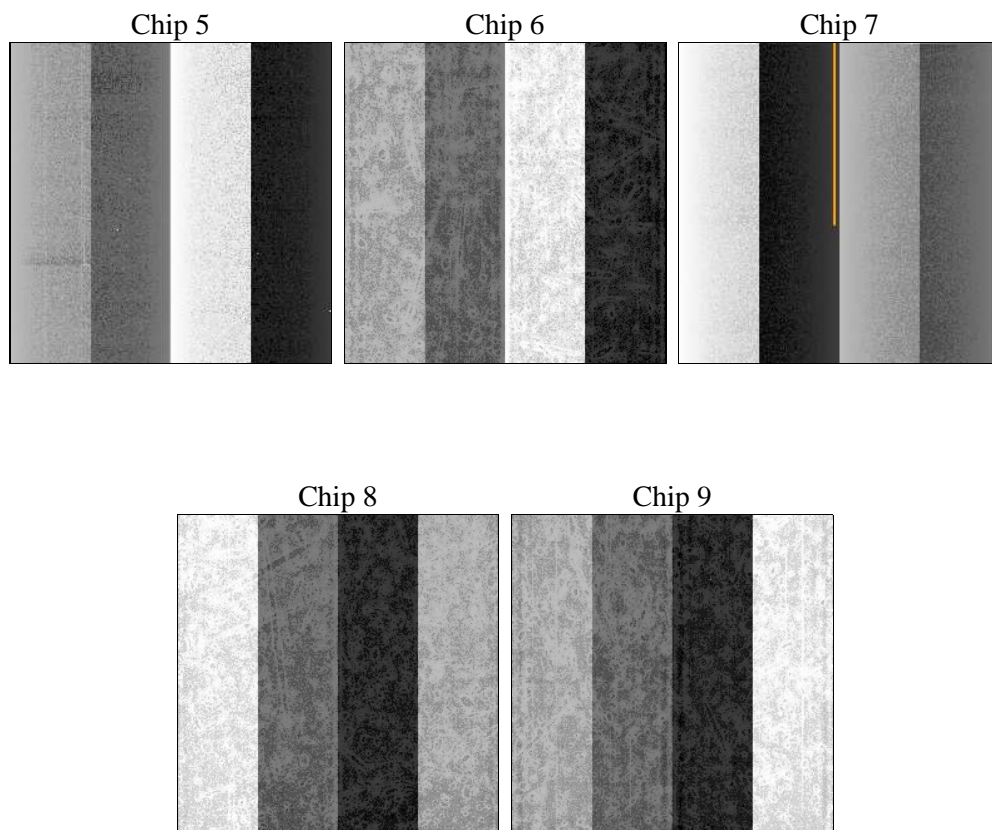
2 OBI

2.1 OBI

2.1.1 Images



2.1.2 Bias



2.1.3 Parameters

obi_num	0	Obi number	sched_exp_time	7520.000000	[s] Scheduled observation exposure time
ascdsver	10.4.3	Processing system revision	ontime	7573.1609617472	Sum of GTIs [s]
caldsver	4.7.0	 	ontime5	7573.1199218035	Sum of GTIs [s]
date	2015-12-28T14:17:59	Date and time of file creation	ontime6	7573.0788817406	Sum of GTIs [s]
revision	1	Processing version of data	ontime7	7573.1609617472	Sum of GTIs [s]
			ontime8	7573.0378417969	Sum of GTIs [s]
			ontime9	7572.996801734	Sum of GTIs [s]
			l1events	286787	Number of level 1 events

2.1.4 Events

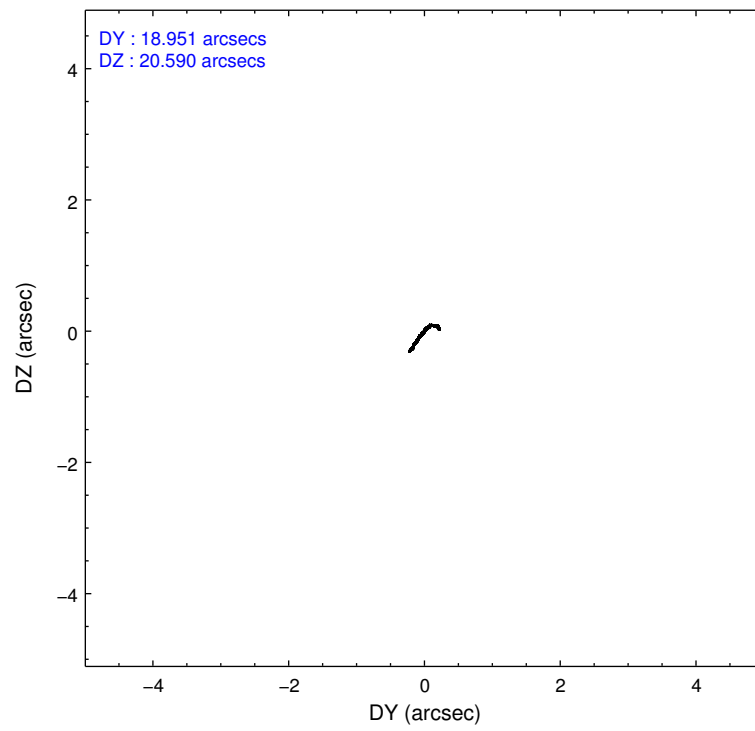
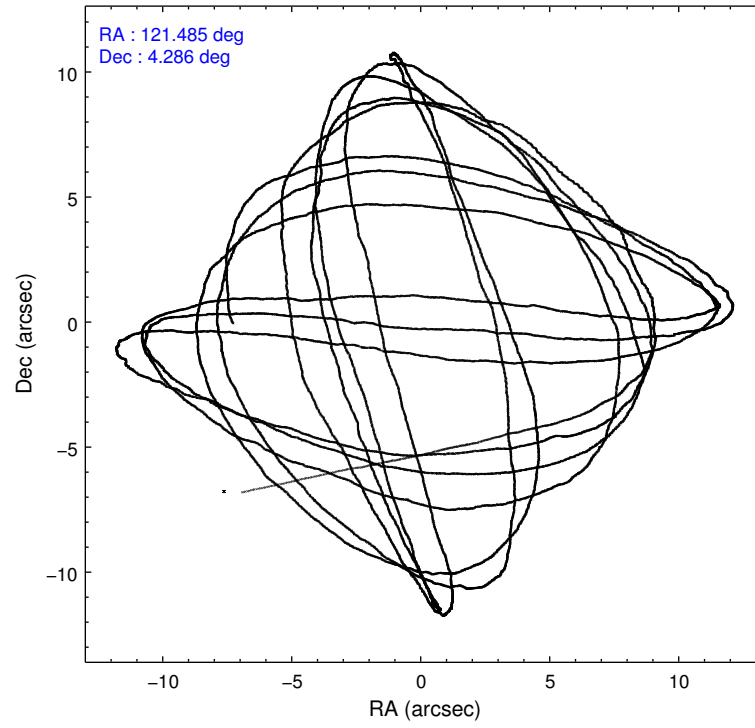
	ccd 5	ccd 6	ccd 7	ccd 8	ccd 9
level 1 events	73419	46511	60446	58463	47948
rejected events	37519	41218	34583	43582	42277
rejected %	51%	88%	57%	74%	88%

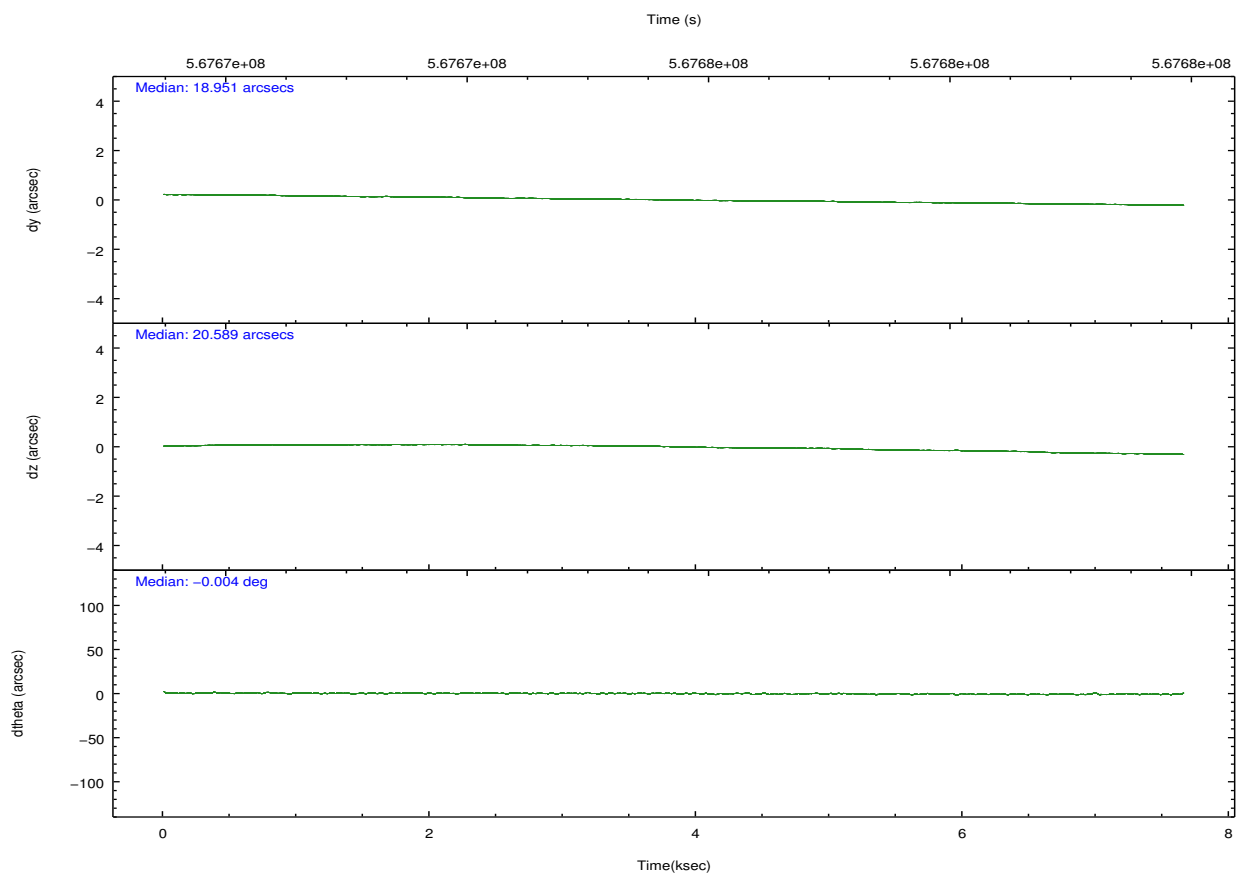
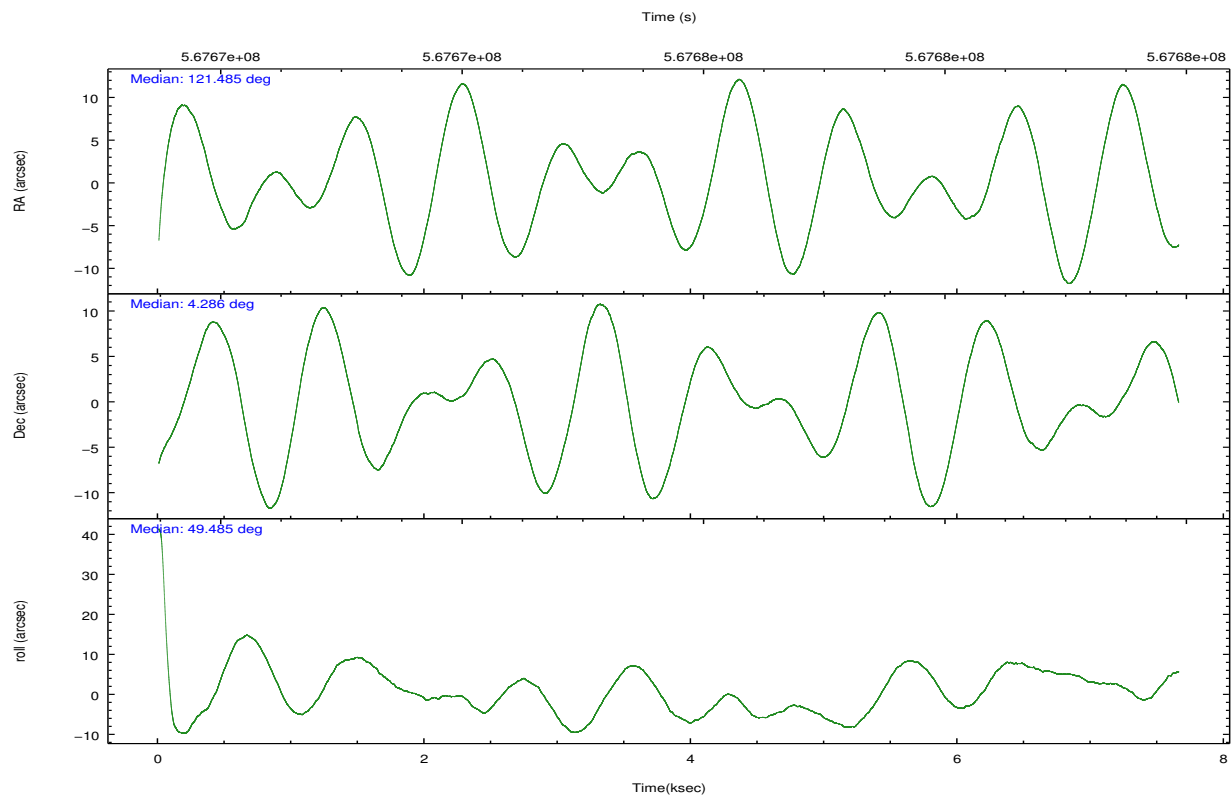
	ccd 5	ccd 6	ccd 7	ccd 8	ccd 9
grade 0 events	3346	1800	2168	4266	1963
	4%	3%	3%	7%	4%
grade 1 events	153	22	80	38	35
	0%	0%	0%	0%	0%
grade 2 events	11328	1207	5456	3711	1277
	15%	2%	9%	6%	2%
grade 3 events	1015	506	2006	1482	616
	1%	1%	3%	2%	1%
grade 4 events	1014	523	2010	1398	542
	1%	1%	3%	2%	1%
grade 5 events	4907	2135	5695	3188	2424
	6%	4%	9%	5%	5%
grade 6 events	19216	1265	14242	4030	1282
	26%	2%	23%	6%	2%
grade 7 events	32440	39053	28789	40350	39809
	44%	83%	47%	69%	83%

2.2 Compared Parameters

Parameter	Planned	Actual	Parameter	Planned	Actual
Instrument	ACIS	ACIS	Obspar format version number	7	7
Detector	ACIS-56789	ACIS-56789	Obspar file type	PREDICTED	ACTUAL
Grating	NONE	NONE	Obspar update status	NONE	UPDATED
Data mode	VFAINT	VFAINT	CCD I0 on	N	N
Observation mode	POINTING	POINTING	CCD I1 on	N	N
[deg] Pointing RA	121.480692	121.4853781675777	CCD I2 on	O1	N
[deg] Pointing Dec	4.258917	4.286035085473572	CCD I3 on	N	N
[deg] Pointing Roll	49.342826	49.49919595699673	CCD S0 on	N	N
[mm] SIM focus pos	-0.684267	-0.6828225247311905	CCD S1 on	O3	Y
[mm] SIM defocus	0	0.001444936568705701	CCD S2 on	O5	Y
[mm] SIM translation stage pos	-190.132523	-190.1400660498719	CCD S3 on	Y	Y
[mm] SIM translation stage offset	0	0.00754346686406393	CCD S4 on	O4	Y
[s] Observation start time (MET)	567672017.184000	567670714.27153	CCD S5 on	O2	Y
Observation start date	2015-12-28T06:39:09	2015-12-28T06:18:34	Number of optional ACIS chips dropped	1	1
[s] Observation end time (MET)	567679537.184000	567679892.12205	On-chip summing requested	N	N
Observation end date	2015-12-28T08:44:29	2015-12-28T08:51:32	Subarray requested	NONE	NONE
Read mode	TIMED	TIMED	Alternating exposures requested	N	N
			[s] Primary exposure time	0.000000	3.1

2.3 Aspect



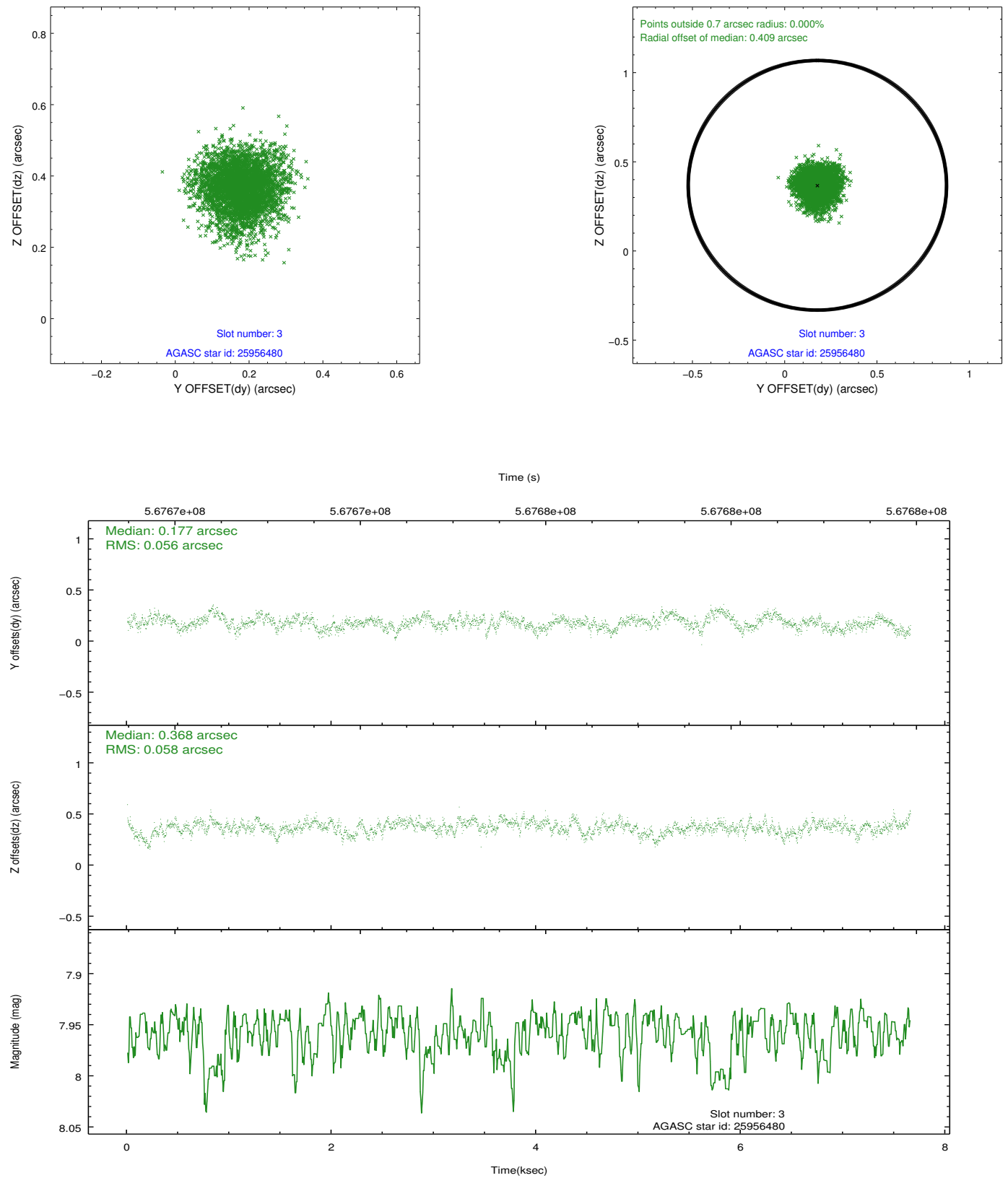


Slot Statistics

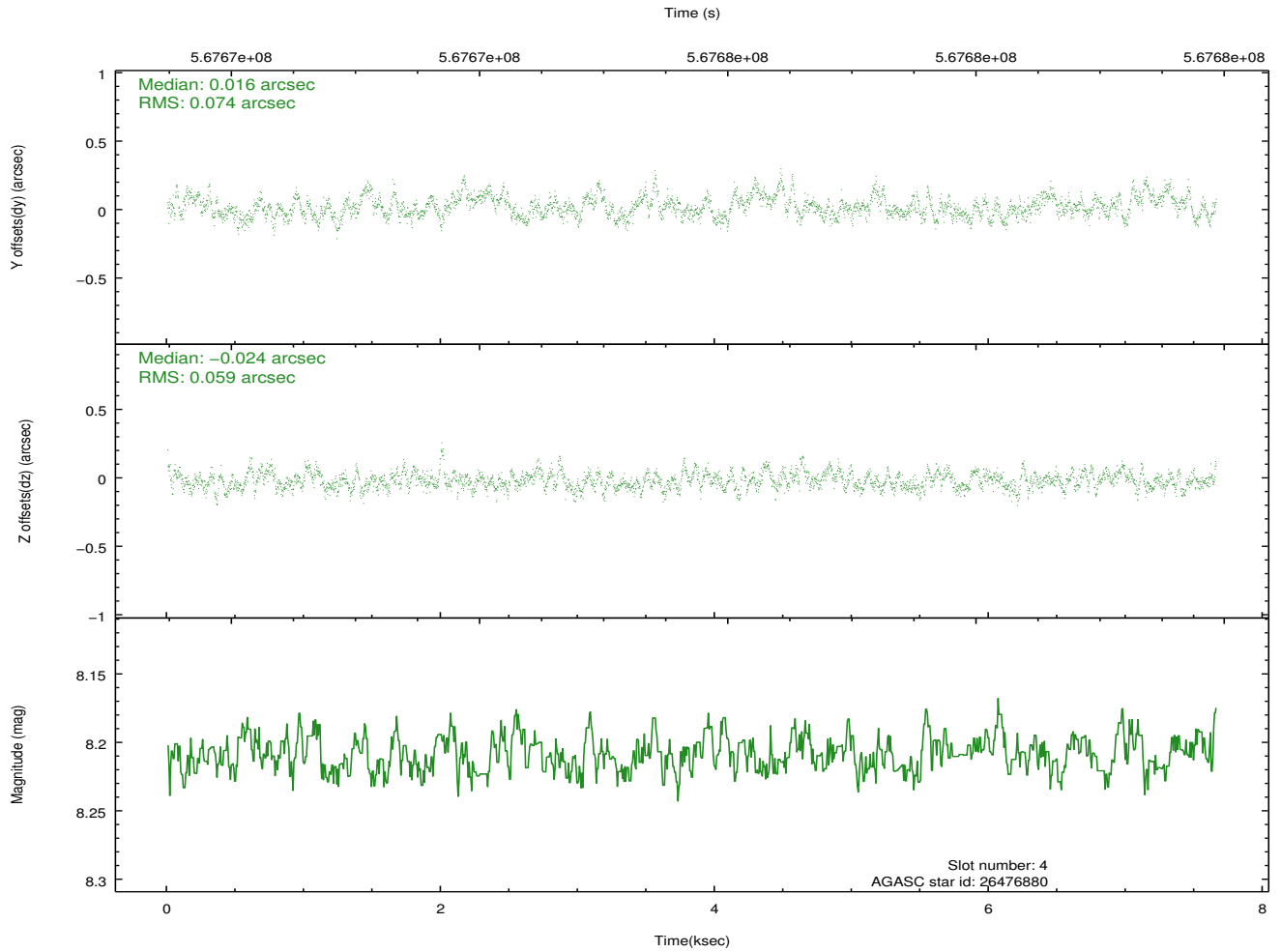
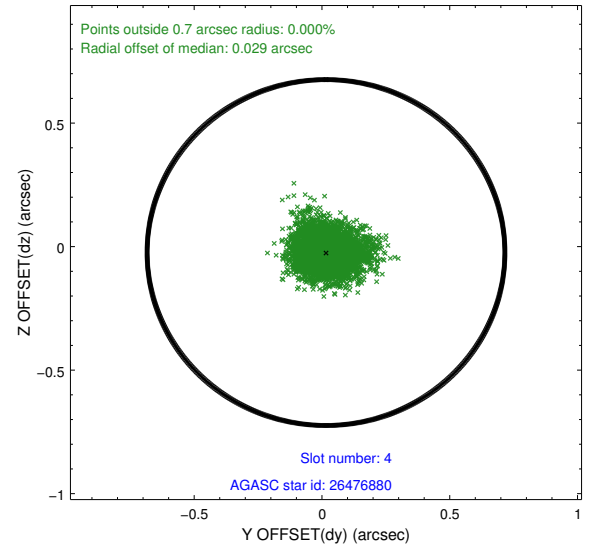
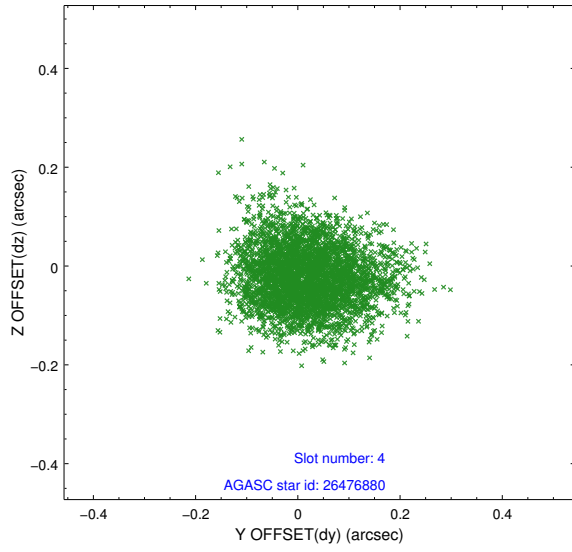
slot	status	used	id	mag	n_pts	med_dy	med_dz	dr1	dr2	ra	dec	mean_y	mean_z
0	FID		ACIS-S-2	7.13	1867	-0.211	-0.116	0.009	0.014	0.000000	0.000000	-772.23	-1742.20
1	FID		ACIS-S-4	7.22	1866	0.464	0.133	0.007	0.013	0.000000	0.000000	2141.37	165.78
2	FID		ACIS-S-5	7.24	1867	-0.283	-0.008	0.007	0.012	0.000000	0.000000	-1824.21	160.13
3	GUIDE	used	25956480	7.96	3734	0.177	0.368	0.086	0.140	121.395310	3.515880	-2228.57	-1510.03
4	GUIDE	used	26476880	8.21	3734	0.016	-0.024	0.100	0.165	121.215500	4.141438	-941.72	446.51
5	GUIDE	used	26481744	8.11	3732	-0.152	-0.258	0.100	0.161	121.009255	4.301706	-986.07	1384.47
6	GUIDE	used	26487648	9.34	3734	0.024	-0.304	0.167	0.278	121.080640	4.583420	-49.42	1850.73
7	GUIDE	used	26616072	9.38	3726	-0.078	0.224	0.149	0.237	121.985102	4.189999	992.35	-1533.46

2.4 Star Slots

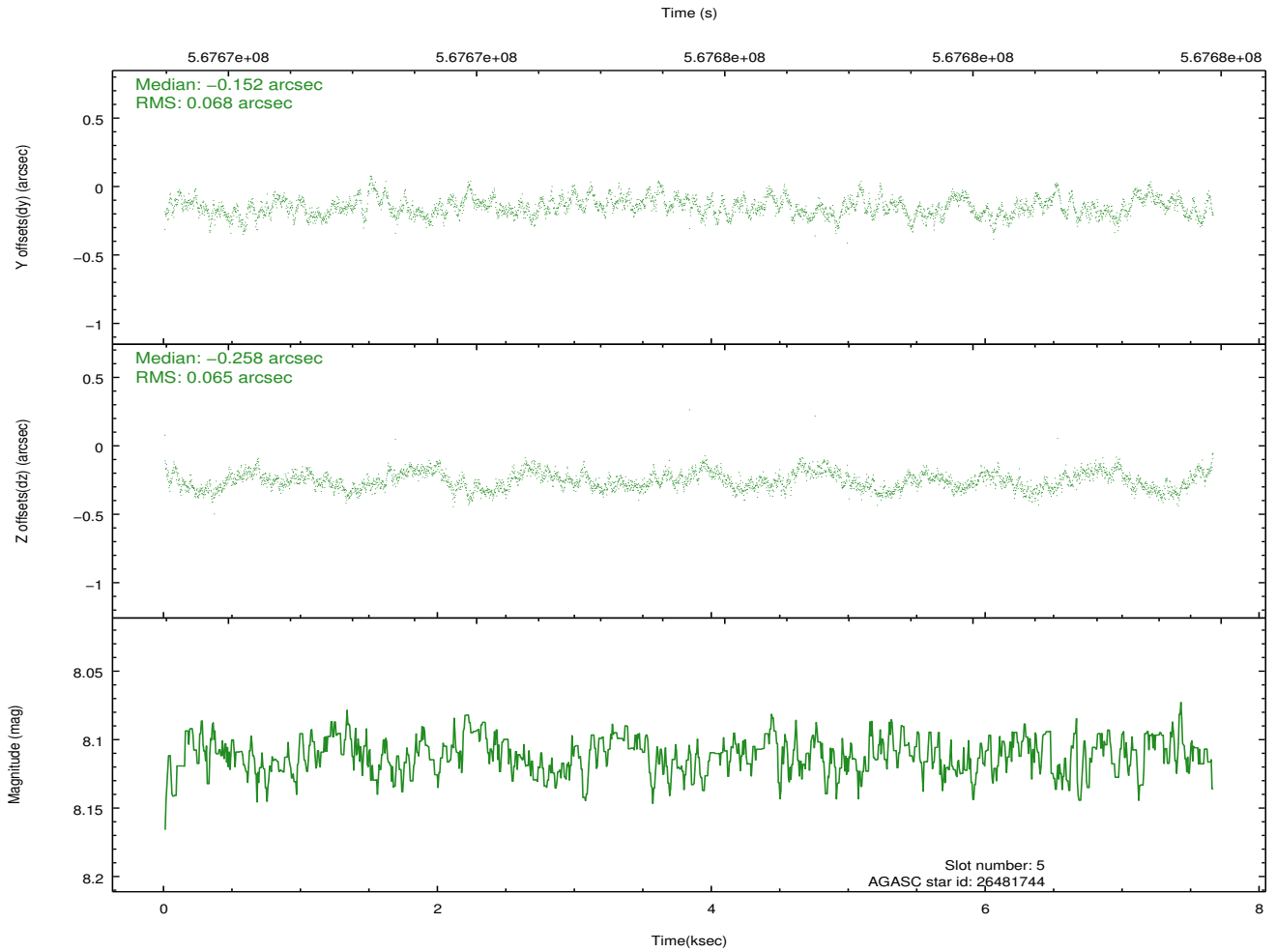
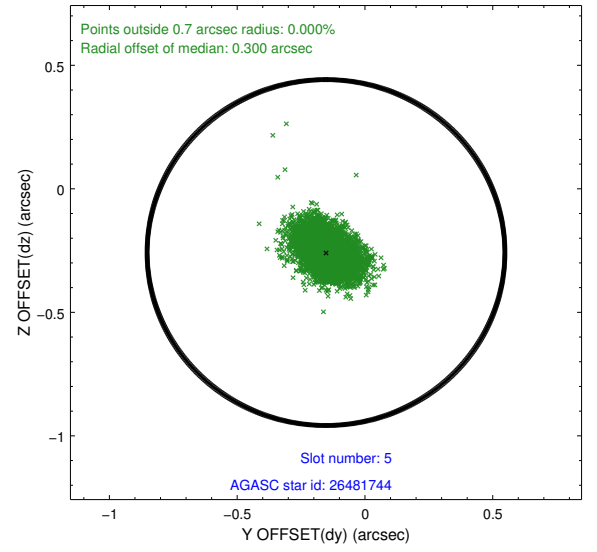
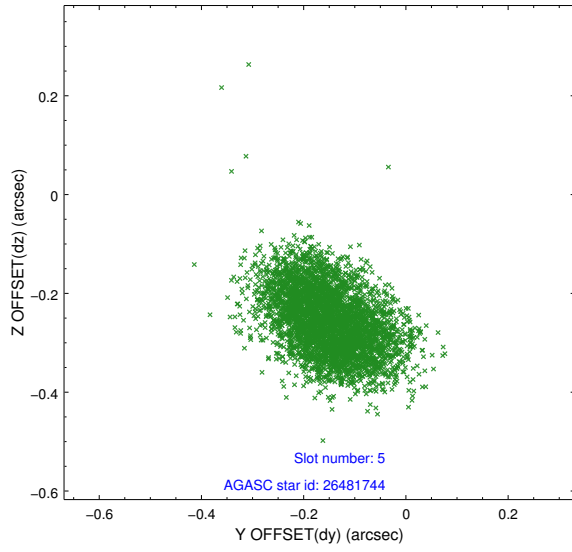
2.4.1 Slot 3



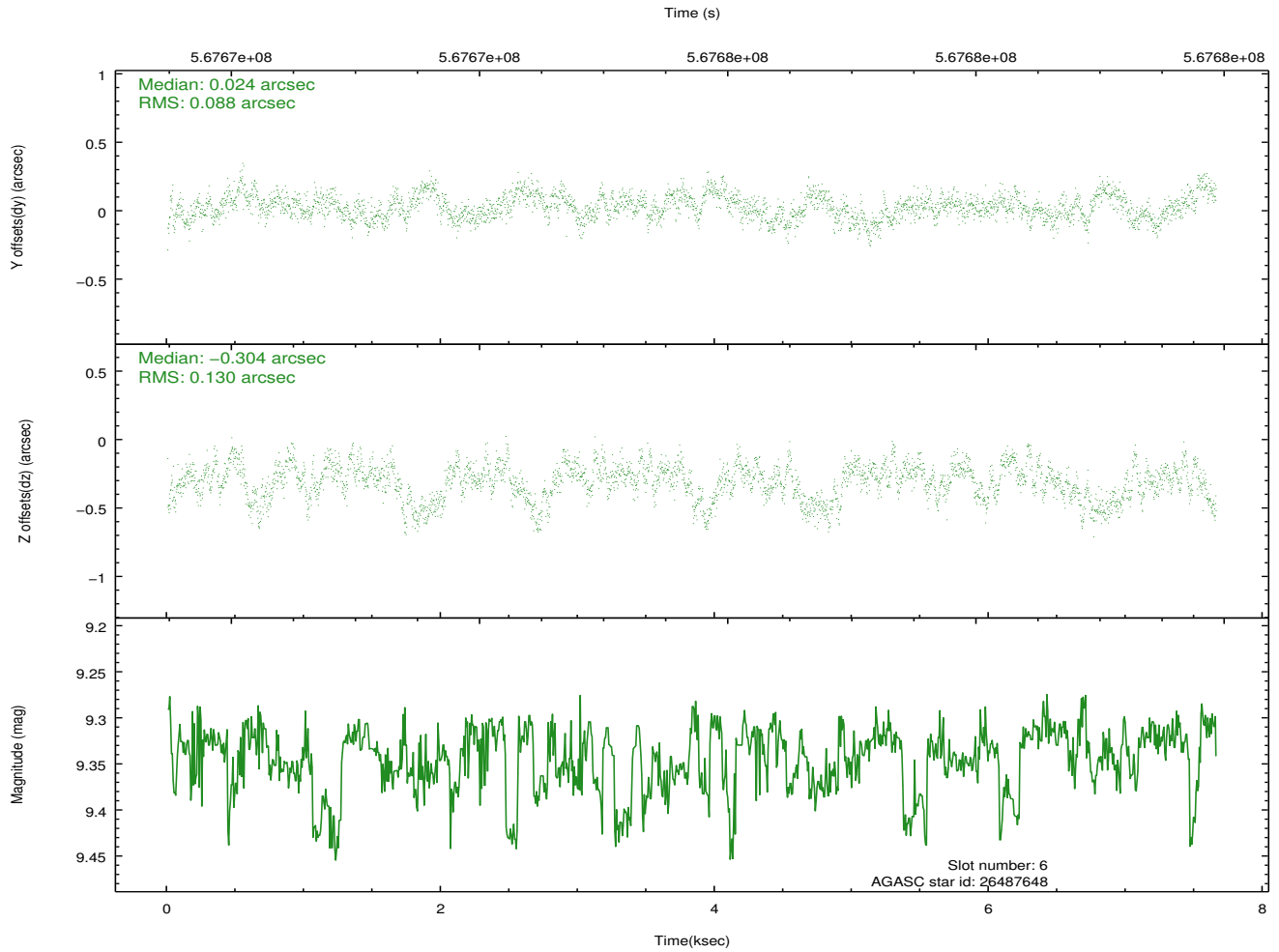
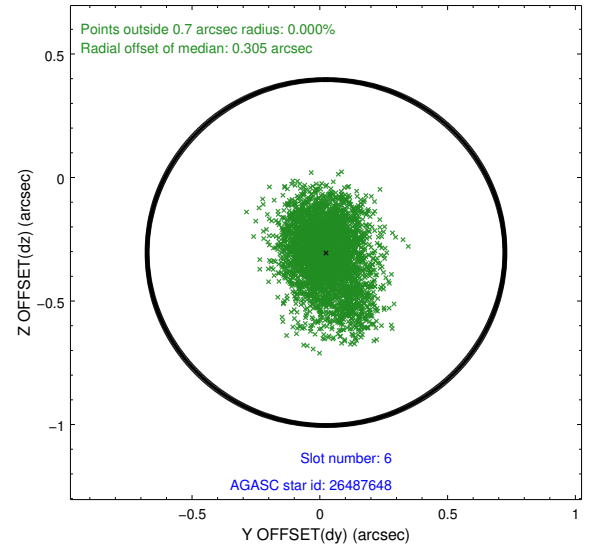
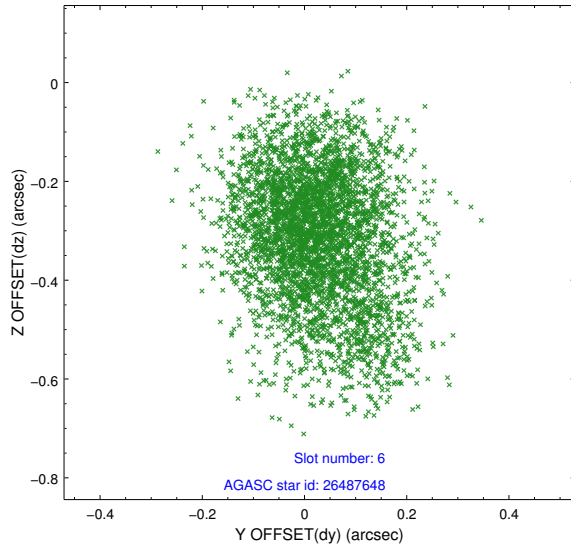
2.4.2 Slot 4



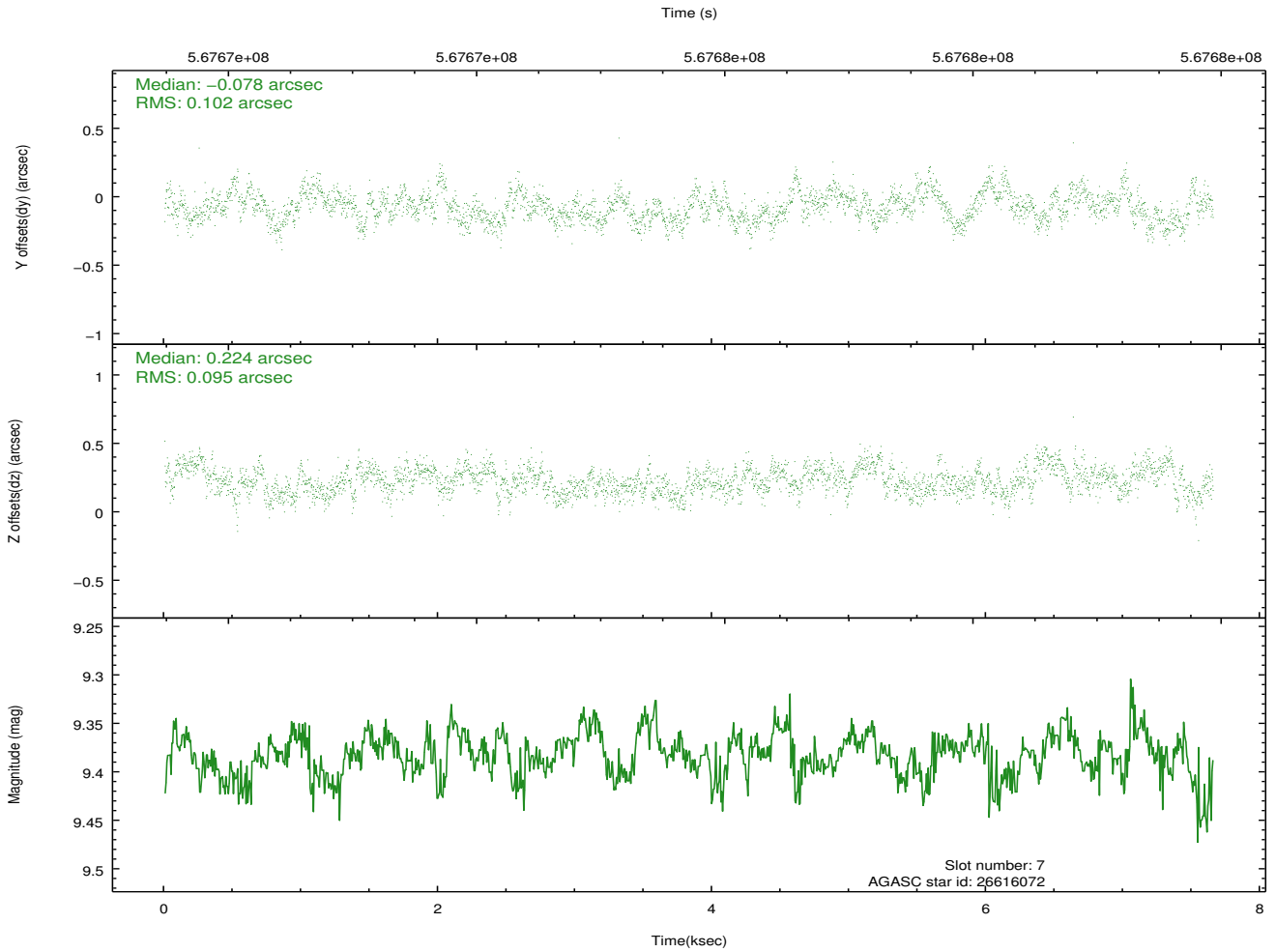
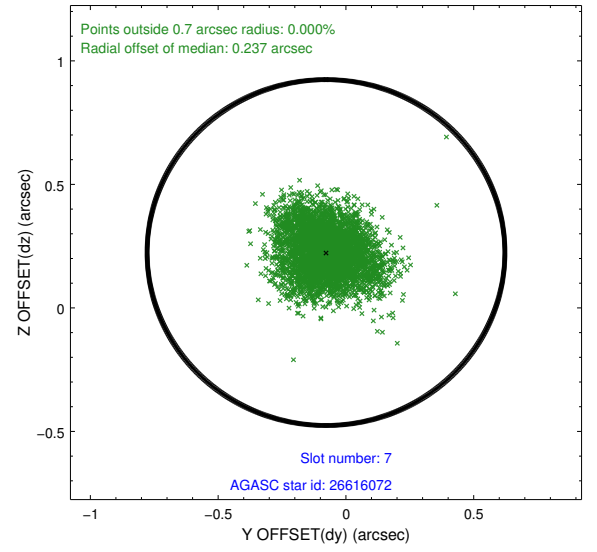
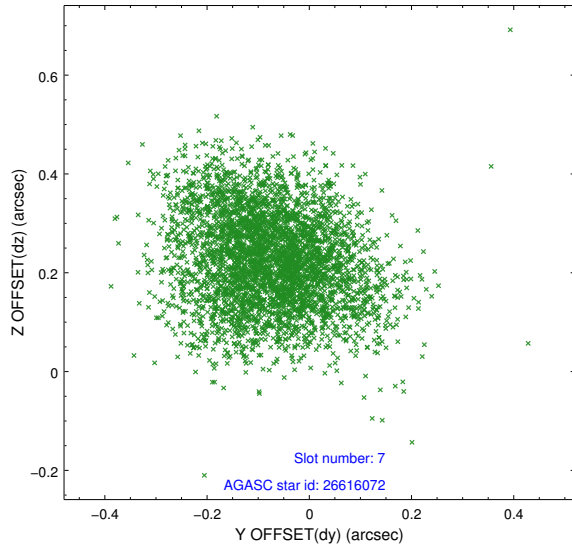
2.4.3 Slot 5



2.4.4 Slot 6

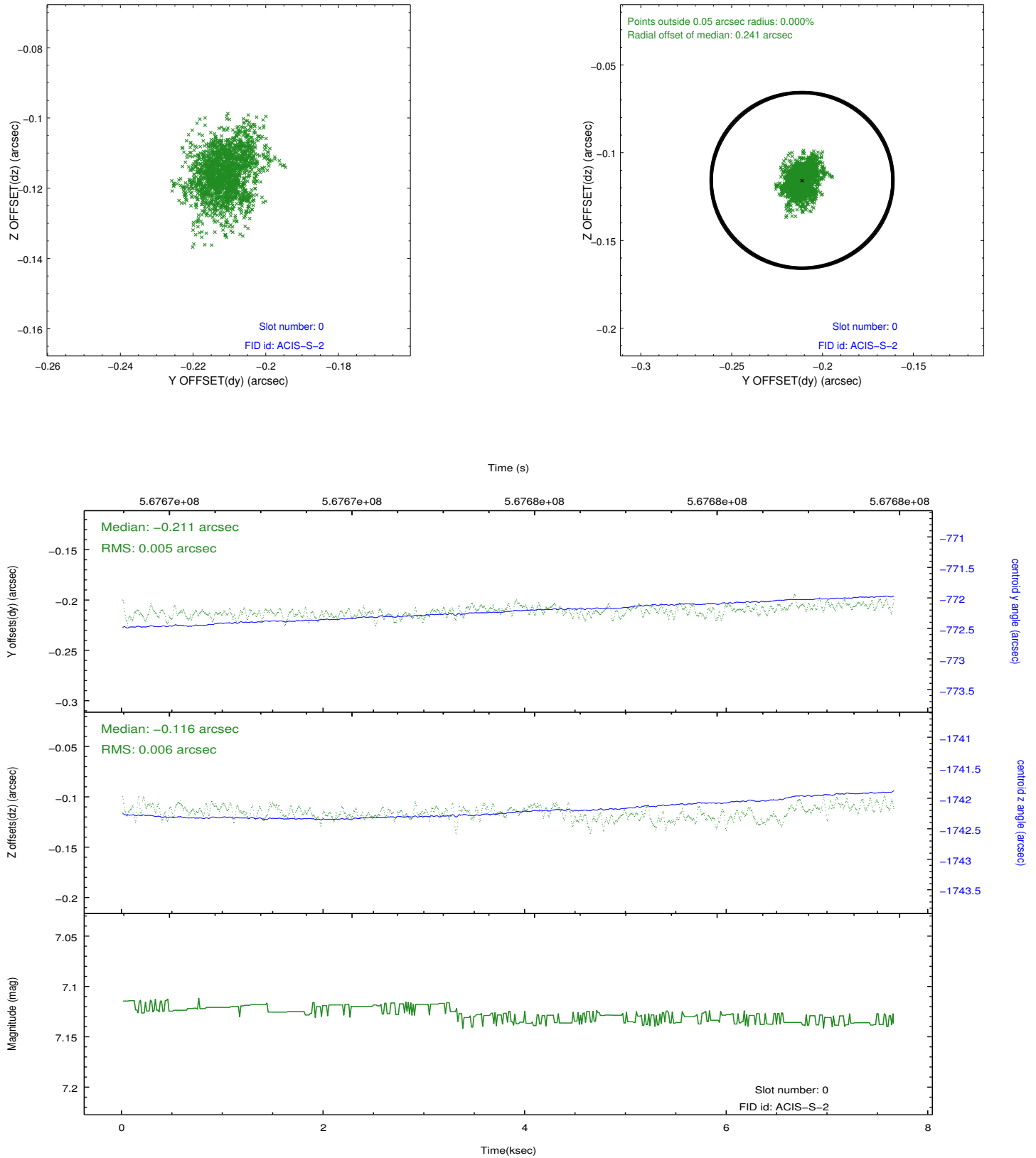


2.4.5 Slot 7

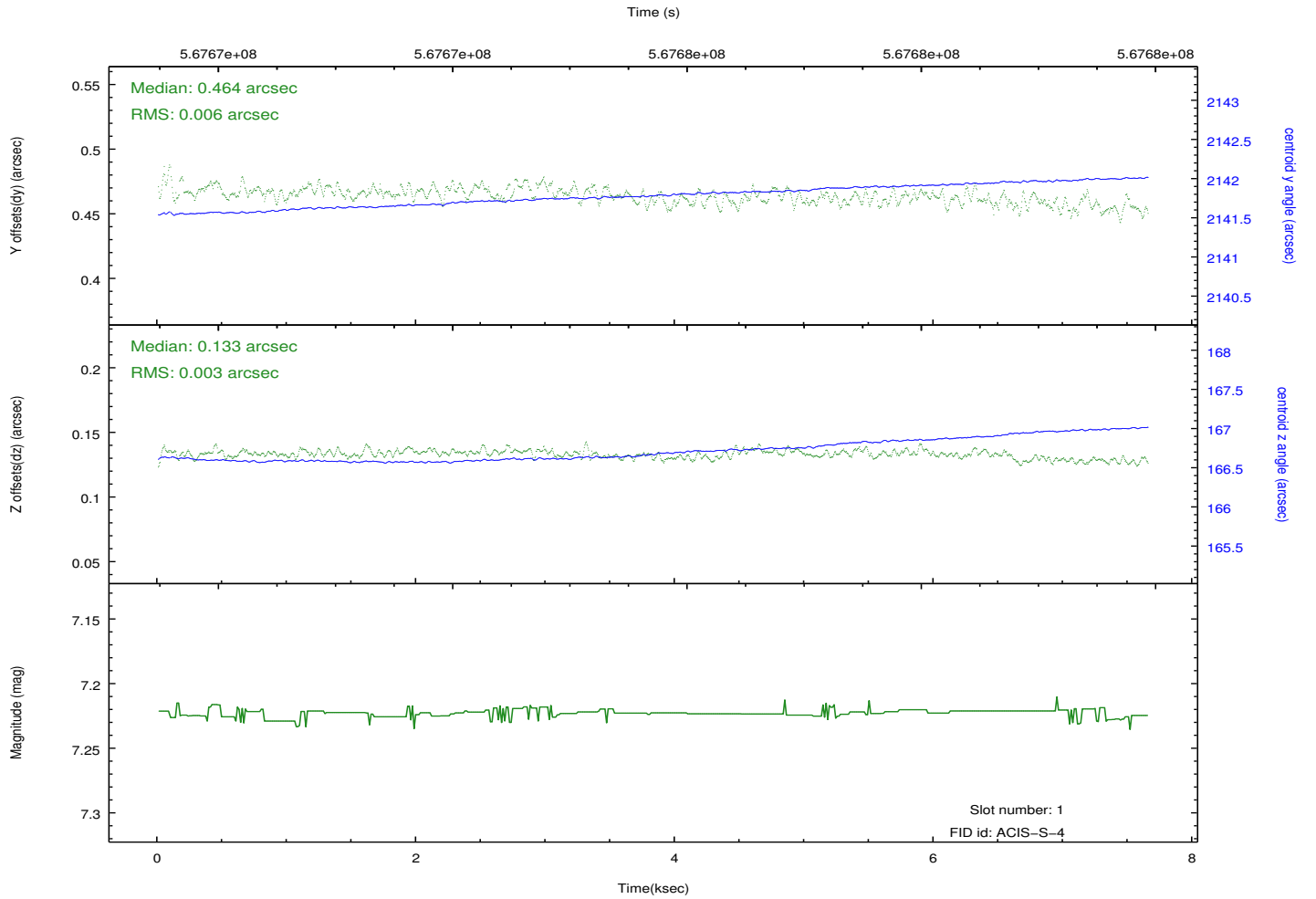
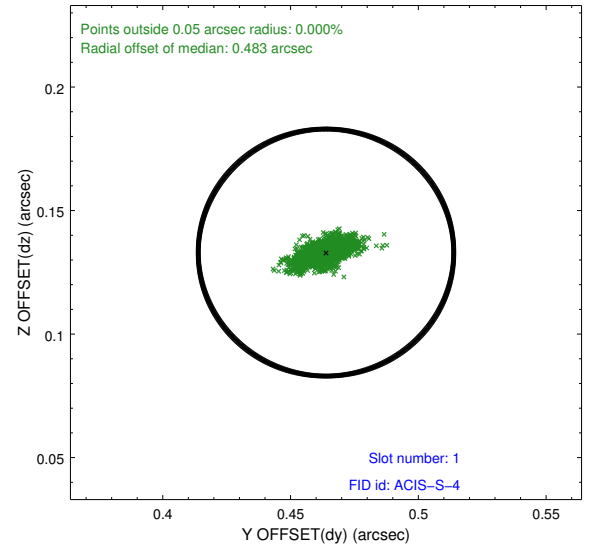
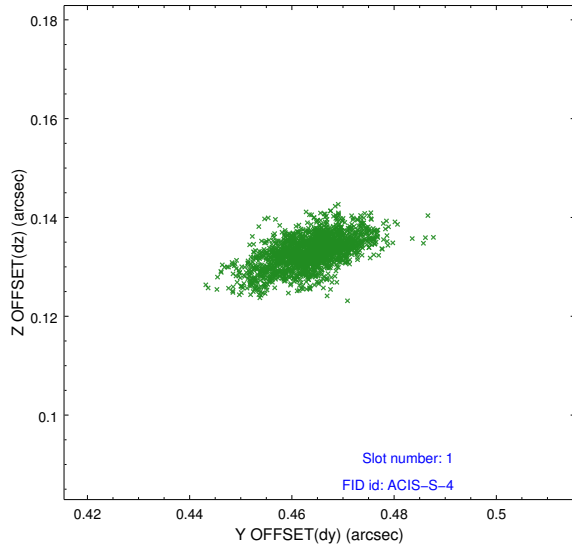


2.5 FID Slots

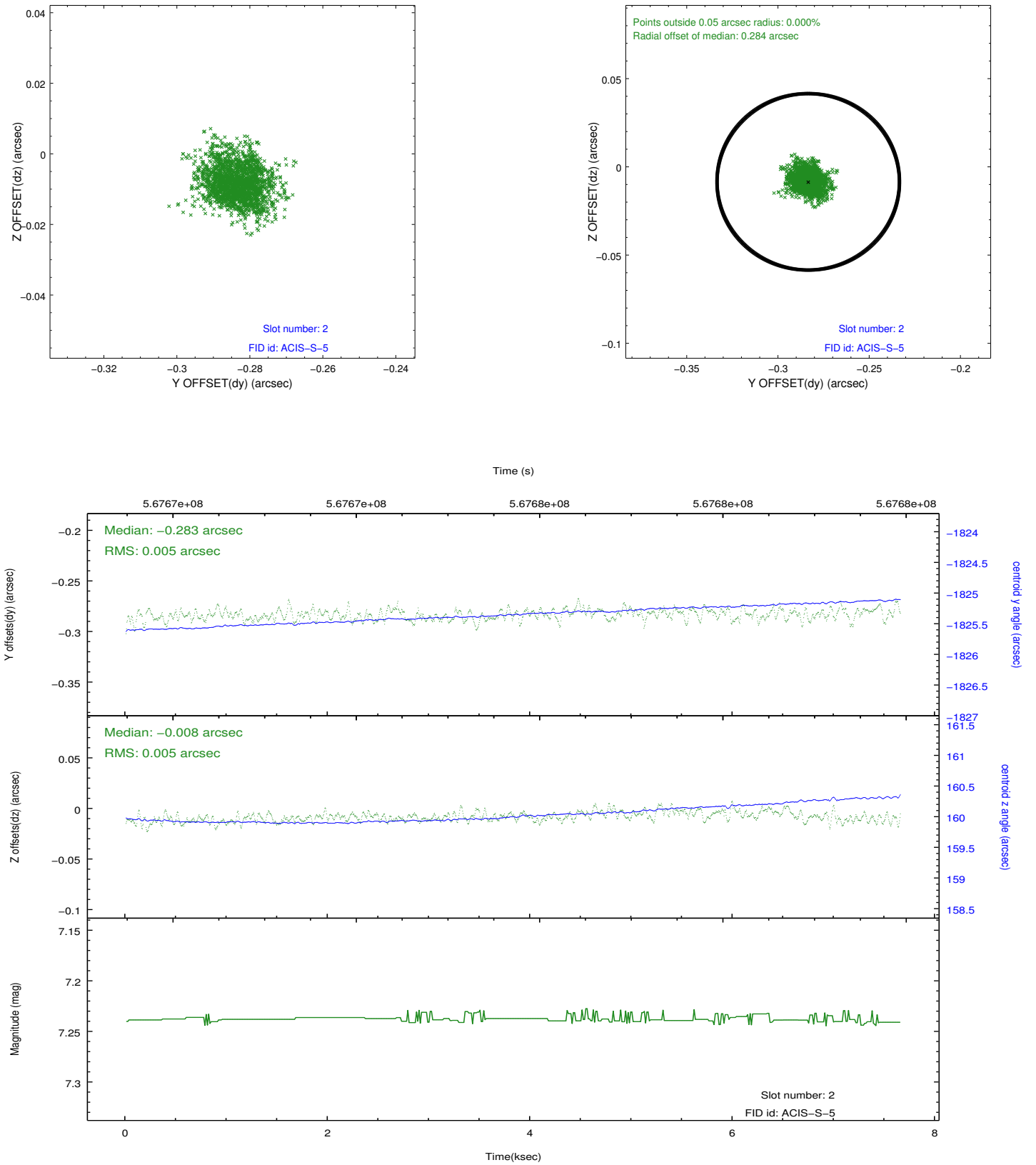
2.5.1 Slot 0



2.5.2 Slot 1



2.5.3 Slot 2



A Summary

A.1 Status

V&V Scientist	Beth Sundheim
V&V Date (YYYY-MM-DD)	2015.12.28
V&V Edition	1
V&V Disposition and Status	OK
V&V Charge Time	7.5731609617472

A.2 Comments

Joint proposal with Swift.
Optional chip I2 was dropped.