

V&V Reference Report

L2 ASCDS Version : 10.5

Observation 17749 - L2 Version 1
Chandra X-Ray Center

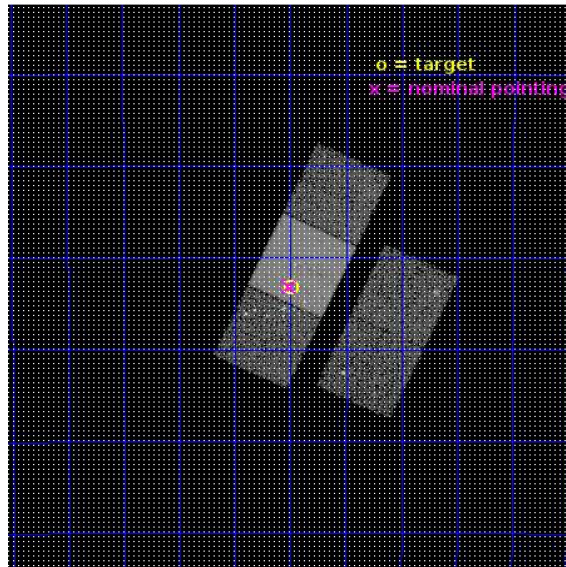
L2 Processing Date : Jun 20 2016

Contents

1	Front	2
2	OBI	3
2.1	OBI	3
2.1.1	Images	3
2.1.2	Bias	3
2.1.3	Parameters	4
2.1.4	Events	4
2.2	Compared Parameters	5
2.3	Aspect	6
2.4	Star Slots	9
2.4.1	Slot 3	9
2.4.2	Slot 4	10
2.4.3	Slot 5	11
2.4.4	Slot 6	12
2.4.5	Slot 7	13
2.5	FID Slots	14
2.5.1	Slot 0	14
2.5.2	Slot 1	15
2.5.3	Slot 2	16
A	Summary	17
A.1	Status	17
A.2	Comments	17

1 Front

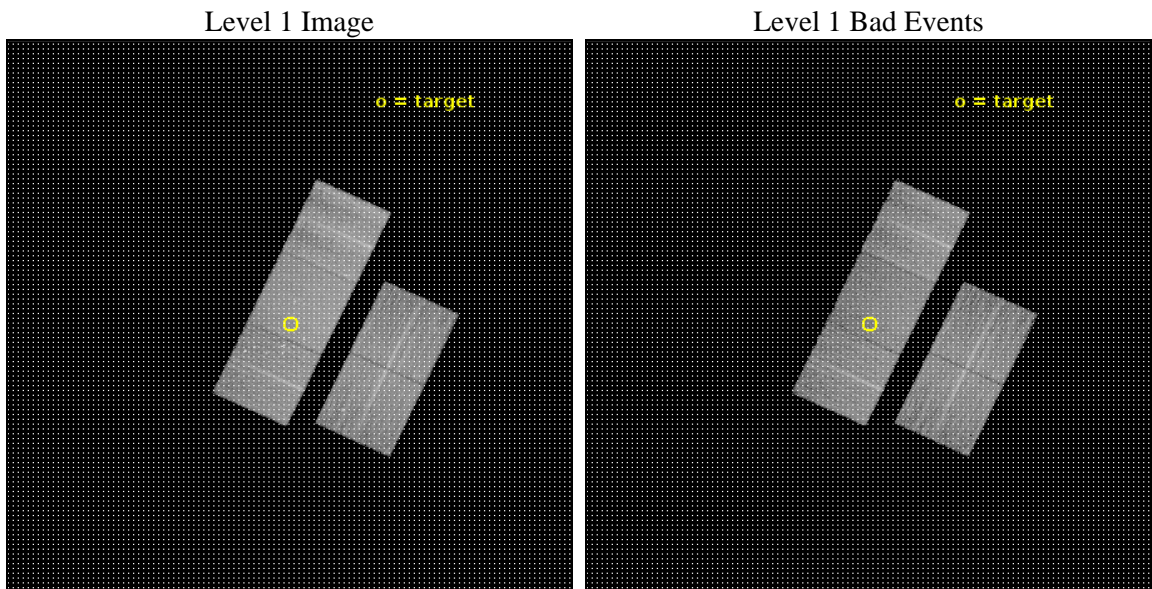
seq_num	201058	Sequence number
obs_id	17749	Observation id
title	X-rays reveal a new, hot jet component: The case of Sz 102	Proposa
observer	Christian Schneider	Principal investigator
object	Sz 102	Source name
dtcycle	0	
cycle	P	events from which exps? Prim/Second/Both
ra_targ	242.12375	Observer's specified target RA [deg]
dec_targ	-39.053056	Observer's specified target Dec [deg]
ra_nom	242.12716719688	Nominal RA [deg]
dec_nom	-39.052809070361	Nominal Dec [deg]
roll_nom	295.158774705	Nominal Roll [deg]
revision	1	Processing version of data
ontime	16060.477236152	Sum of GTIs [s]
livetime	15850.63527751	Livetime [s]
ontime2	16057.172046065	Sum of GTIs [s]
ontime3	16060.395156145	Sum of GTIs [s]
ontime6	16060.436196208	Sum of GTIs [s]
ontime7	16060.477236152	Sum of GTIs [s]
ontime8	16057.213125944	Sum of GTIs [s]
l2events	102544	Number of level 2 events



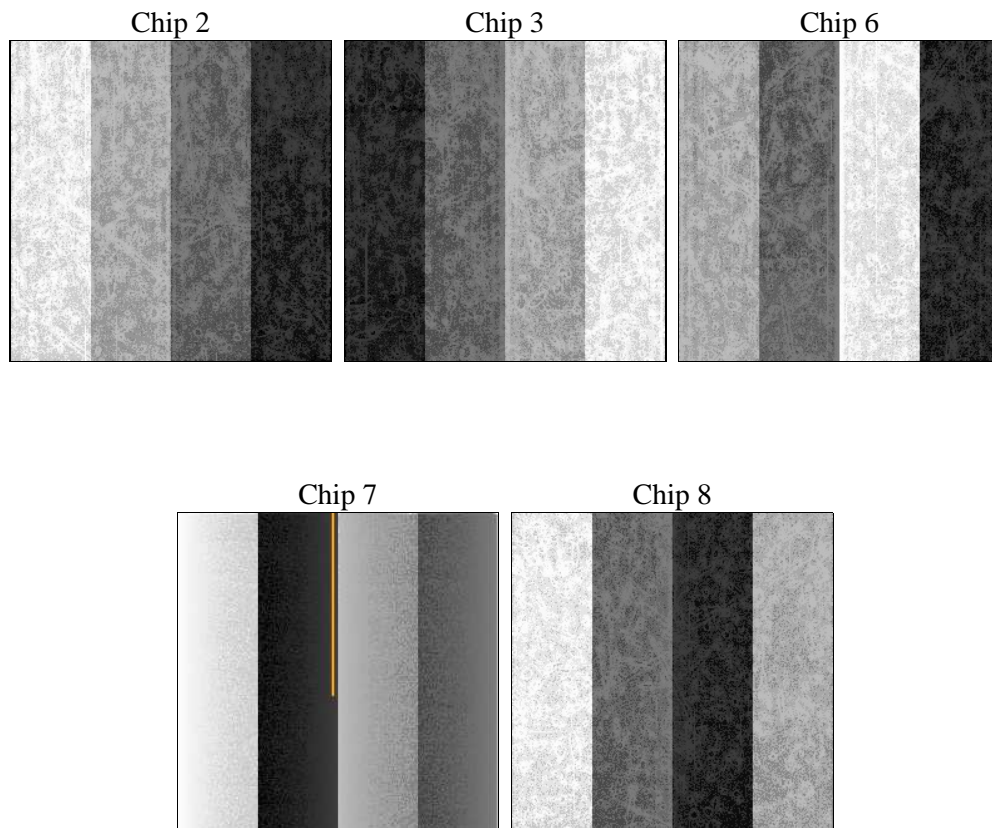
2 OBI

2.1 OBI

2.1.1 Images



2.1.2 Bias



2.1.3 Parameters

obi_num	0	Obi number	sched_exp_time	16000.000000	[s] Scheduled observation exposure time
ascdsver	10.5	Processing system revision	ontime	16060.477236152	Sum of GTIs [s]
caldsver	4.7.2	 	ontime2	16057.172046065	Sum of GTIs [s]
date	2016-06-20T18:59:04	Date and time of file creation	ontime3	16060.395156145	Sum of GTIs [s]
revision	1	Processing version of data	ontime6	16060.436196208	Sum of GTIs [s]
			ontime7	16060.477236152	Sum of GTIs [s]
			ontime8	16057.213125944	Sum of GTIs [s]
			l1events	567209	Number of level 1 events

2.1.4 Events

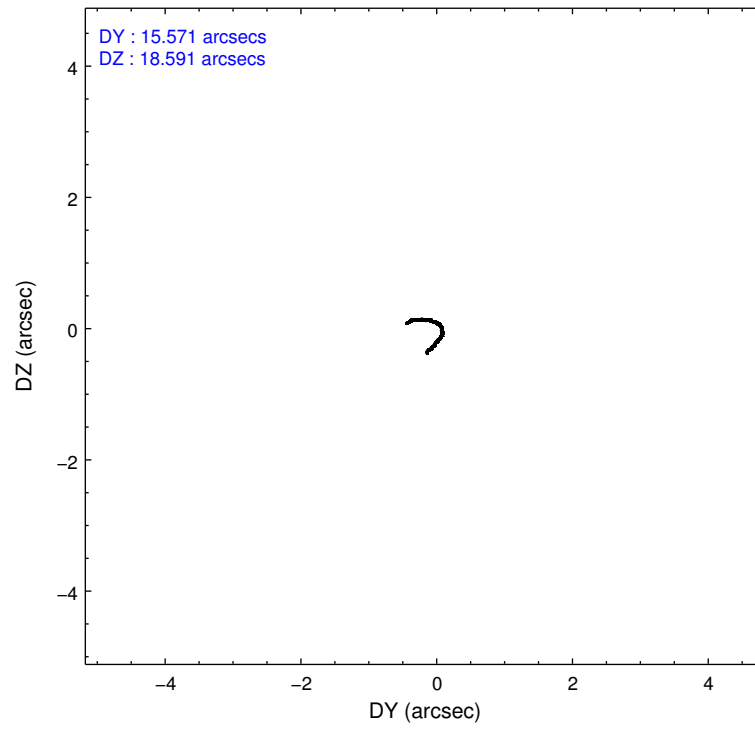
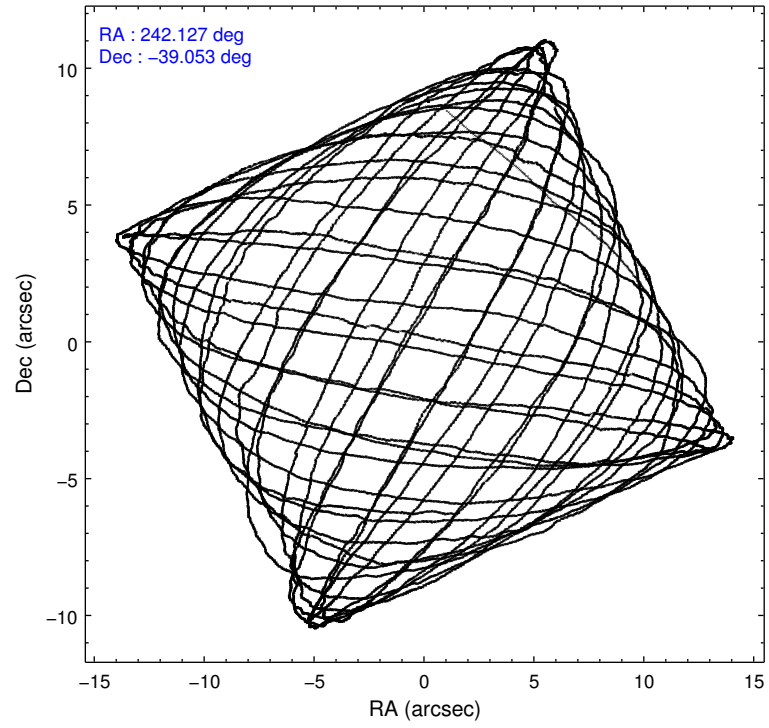
	ccd 2	ccd 3	ccd 6	ccd 7	ccd 8
level 1 events	100247	95278	106166	133213	132305
rejected events	89058	84590	89497	74646	97856
rejected %	88%	88%	84%	56%	73%

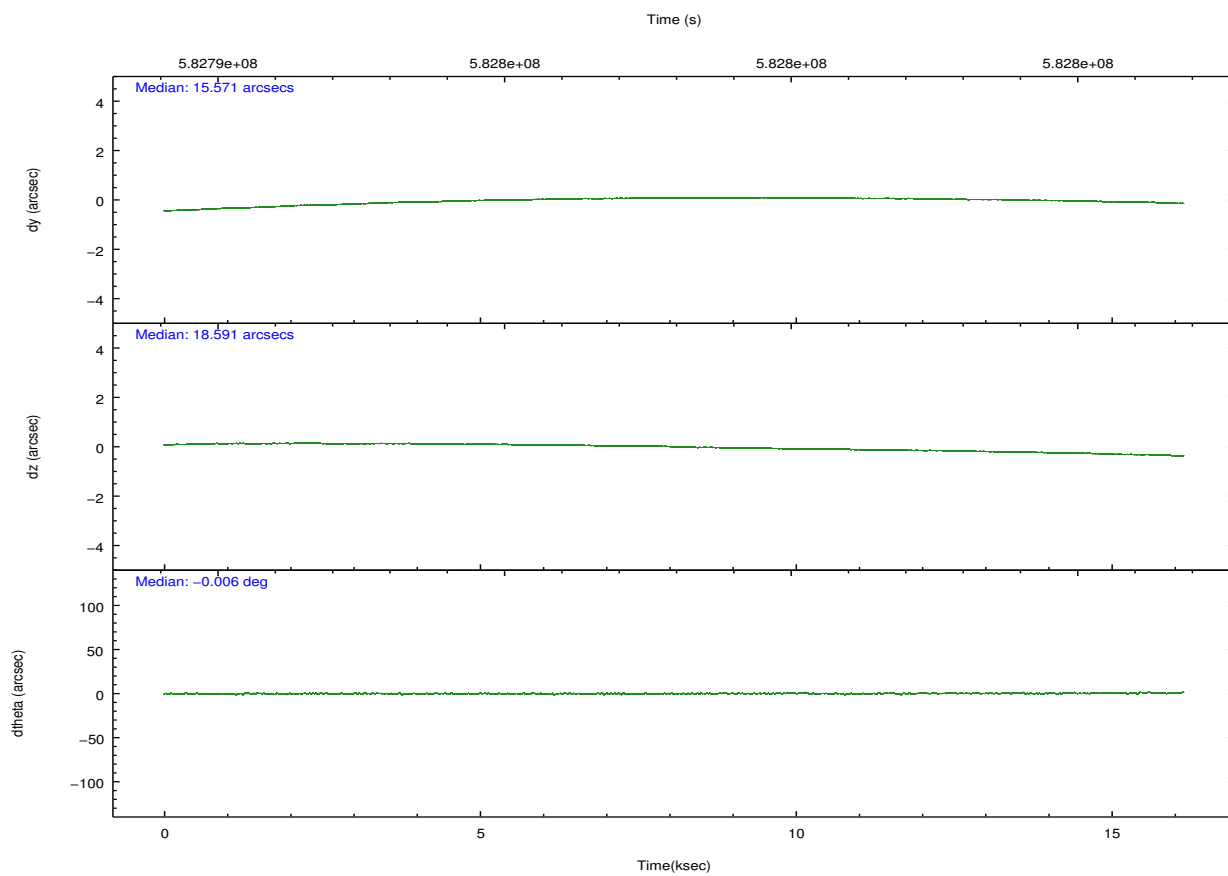
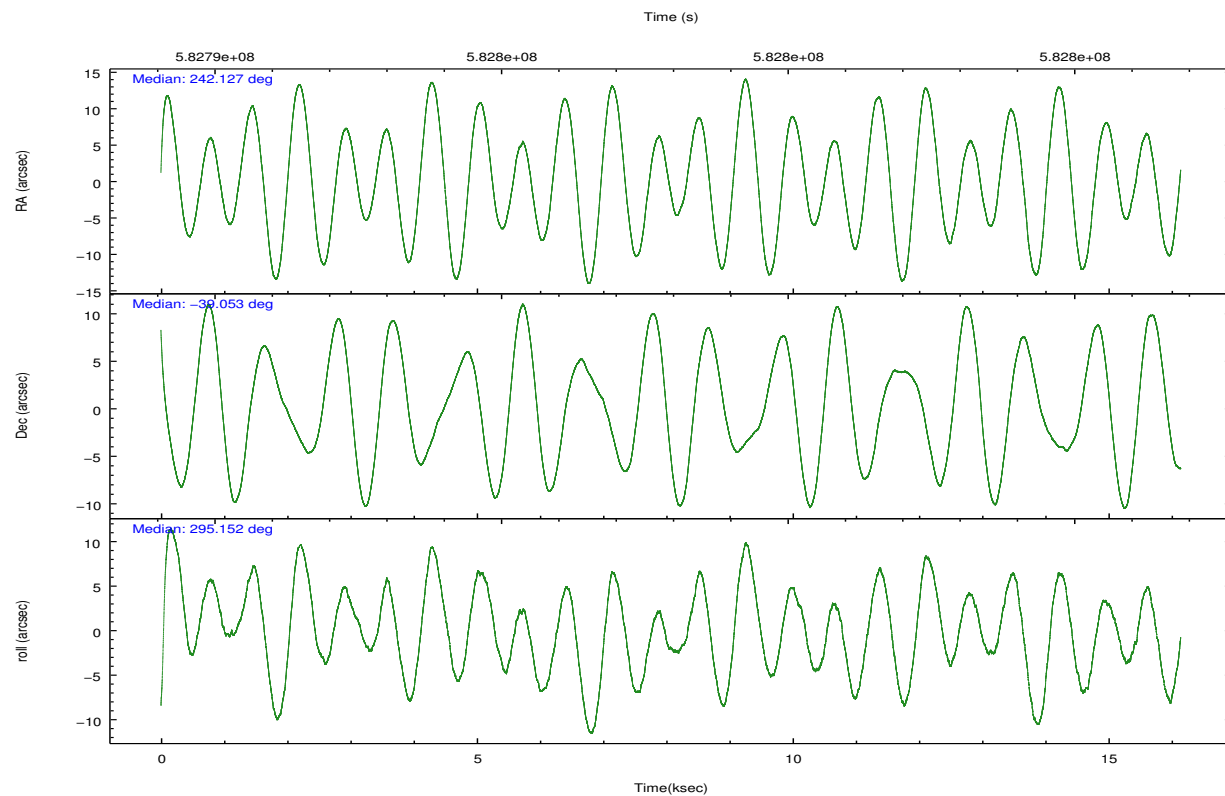
	ccd 2	ccd 3	ccd 6	ccd 7	ccd 8
grade 0 events	4227	3850	8059	5307	10256
	4%	4%	7%	3%	7%
grade 1 events	44	58	123	150	96
	0%	0%	0%	0%	0%
grade 2 events	2672	2368	3133	12188	8382
	2%	2%	2%	9%	6%
grade 3 events	1063	1088	1275	4781	3457
	1%	1%	1%	3%	2%
grade 4 events	1086	1132	1350	4667	3294
	1%	1%	1%	3%	2%
grade 5 events	3809	4882	4892	13132	7190
	3%	5%	4%	9%	5%
grade 6 events	2145	2255	2859	31656	9075
	2%	2%	2%	23%	6%
grade 7 events	85201	79645	84475	61332	90555
	84%	83%	79%	46%	68%

2.2 Compared Parameters

Parameter	Planned	Actual	Parameter	Planned	Actual
Instrument	ACIS	ACIS	Obspar format version number	7	7
Detector	ACIS-23678	ACIS-23678	Obspar file type	PREDICTED	ACTUAL
Grating	NONE	NONE	Obspar update status	NONE	UPDATED
Data mode	VFAINT	VFAINT	CCD I0 on	N	N
Observation mode	POINTING	POINTING	CCD I1 on	N	N
[deg] Pointing RA	242.097894	242.1271671968818	CCD I2 on	O1	Y
[deg] Pointing Dec	-39.037423	-39.0528090703615	CCD I3 on	Y	Y
[deg] Pointing Roll	294.983709	295.1587747049996	CCD S0 on	N	N
[mm] SIM focus pos	-0.684267	-0.6828225247311905	CCD S1 on	N	N
[mm] SIM defocus	0	0.001444936568705701	CCD S2 on	Y	Y
[mm] SIM translation stage pos	-190.132523	-190.1425803651734	CCD S3 on	Y	Y
[mm] SIM translation stage offset	0	0.01005778216563158	CCD S4 on	Y	Y
[s] Observation start time (MET)	582790020.184000	582788288.88191	CCD S5 on	N	N
Observation start date	2016-06-20T06:05:52	2016-06-20T05:38:08	Number of optional ACIS chips dropped	0	0
[s] Observation end time (MET)	582806020.184000	582806994.62049	On-chip summing requested	N	N
Observation end date	2016-06-20T10:32:32	2016-06-20T10:49:54	Subarray requested	NONE	NONE
Read mode	TIMED	TIMED	Alternating exposures requested	N	N
			[s] Primary exposure time	0.000000	3.1

2.3 Aspect



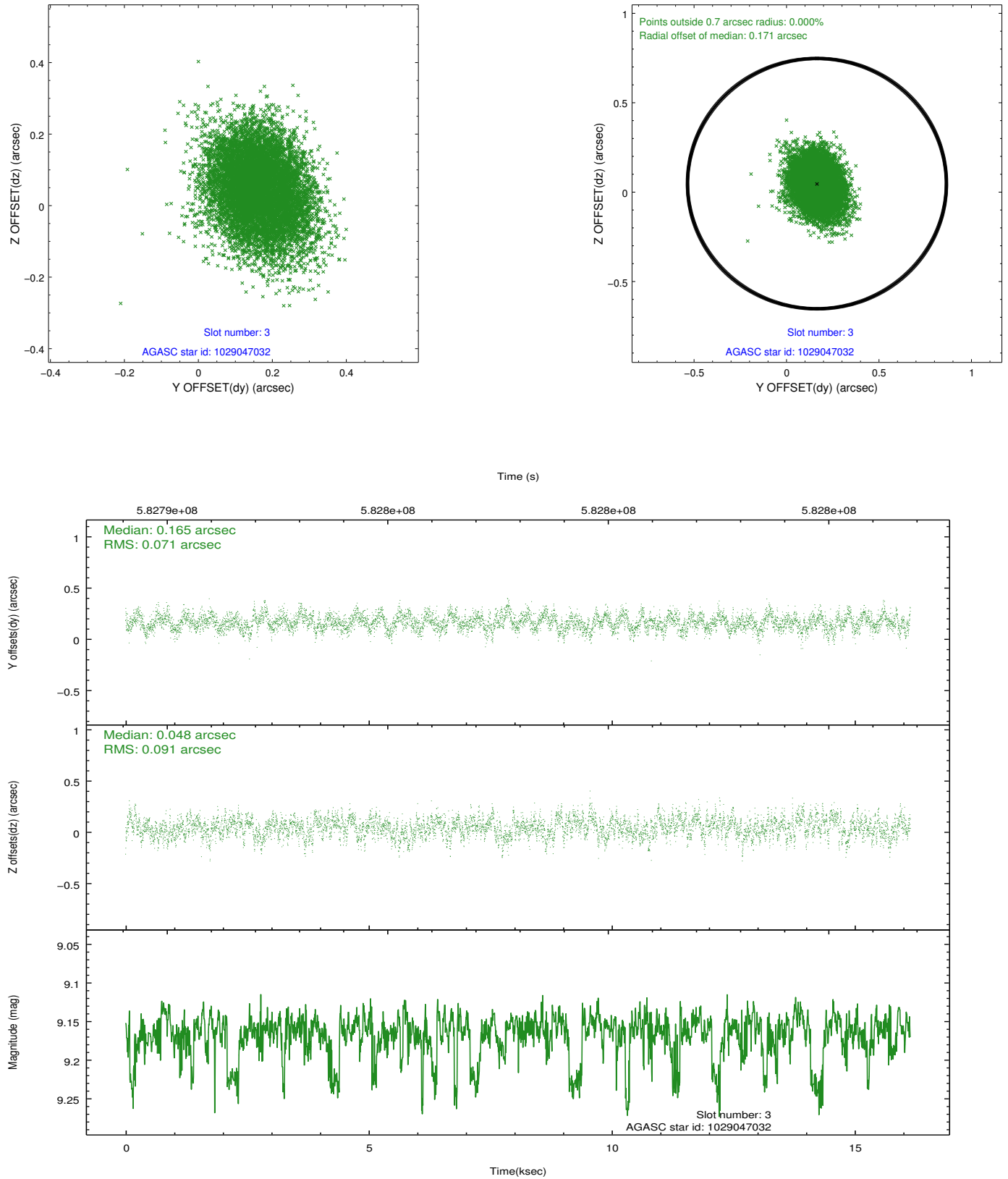


Slot Statistics

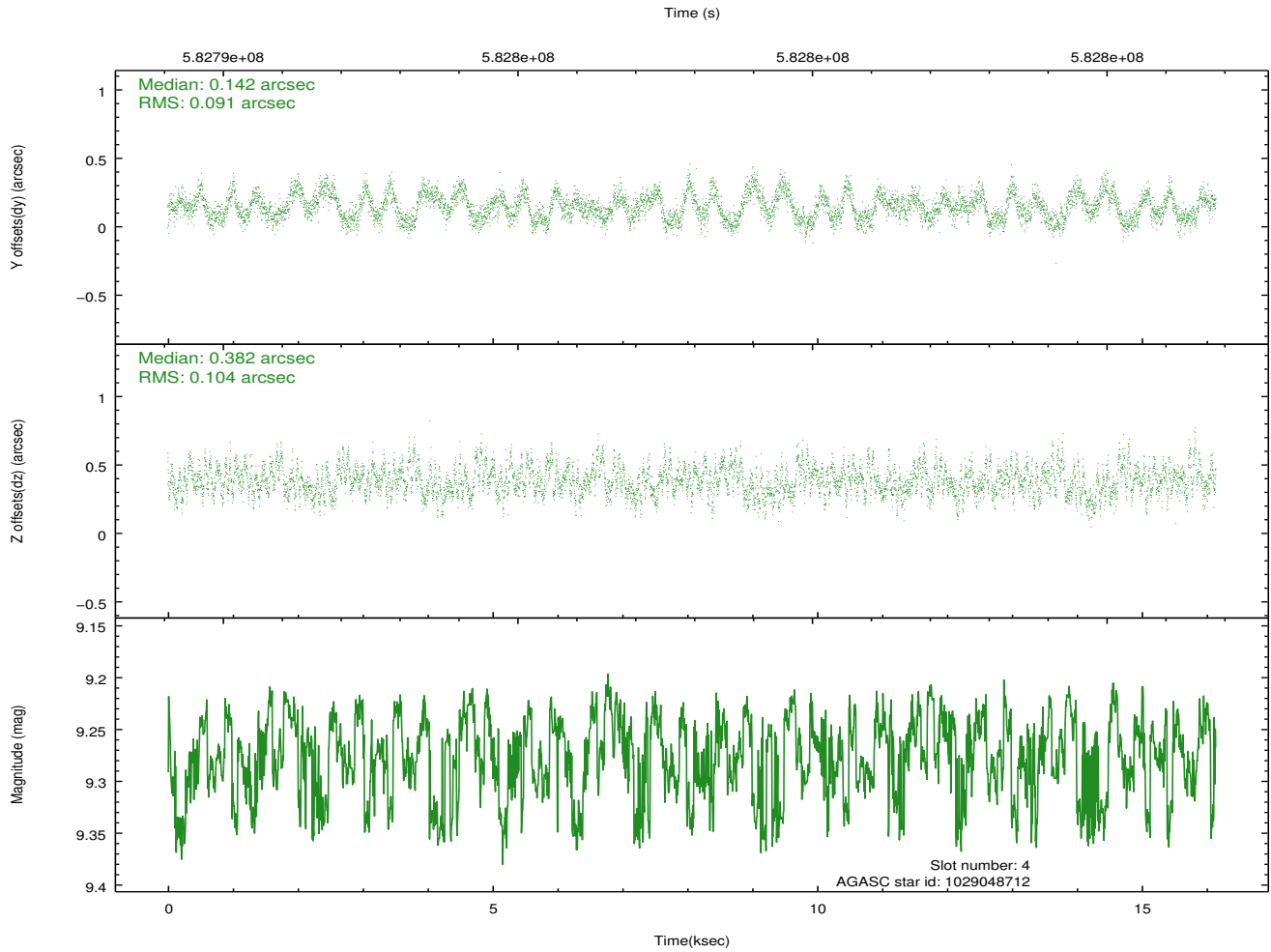
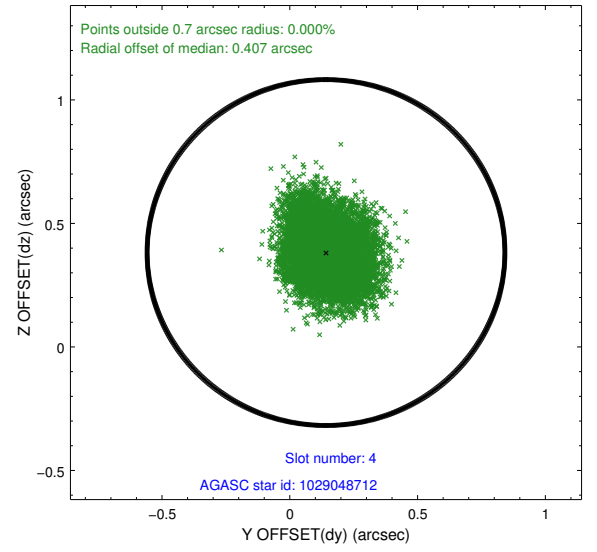
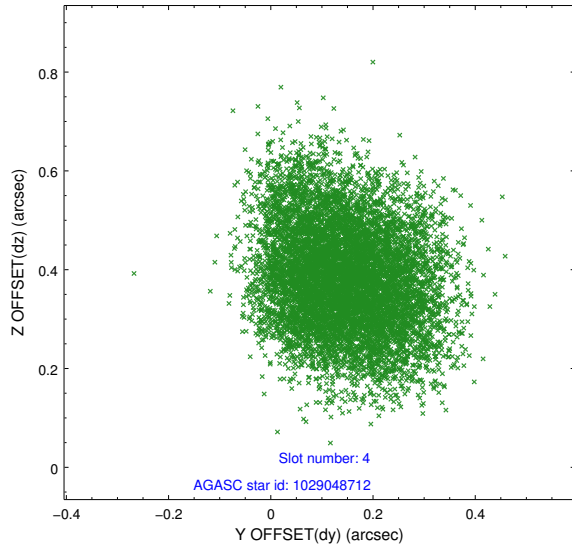
slot	status	used	id	mag	n_pts	med_dy	med_dz	dr1	dr2	ra	dec	mean_y	mean_z
0	FID		ACIS-S-1	7.20	3938	0.039	-0.030	0.009	0.014	0.000000	0.000000	927.58	-1735.64
1	FID		ACIS-S-4	7.22	3938	0.344	0.007	0.007	0.011	0.000000	0.000000	2145.42	168.29
2	FID		ACIS-S-5	7.22	3938	-0.411	0.036	0.008	0.015	0.000000	0.000000	-1821.42	162.18
3	GUIDE	used	1029047032	9.16	7867	0.165	0.048	0.123	0.200	241.657214	-39.145122	-164.58	-1280.36
4	GUIDE	used	1029048712	9.27	7867	0.142	0.382	0.149	0.236	241.237794	-38.954366	-1276.53	-2061.43
5	GUIDE	used	1029059360	8.26	7874	-0.150	-0.055	0.102	0.165	241.638388	-39.259513	187.14	-1500.41
6	GUIDE	used	1029580280	9.16	7867	-0.072	-0.152	0.151	0.245	242.322361	-39.646406	2250.86	-362.62
7	GUIDE	used	1029179512	7.27	7874	-0.088	-0.226	0.079	0.136	242.579529	-38.325821	-1744.11	2313.35

2.4 Star Slots

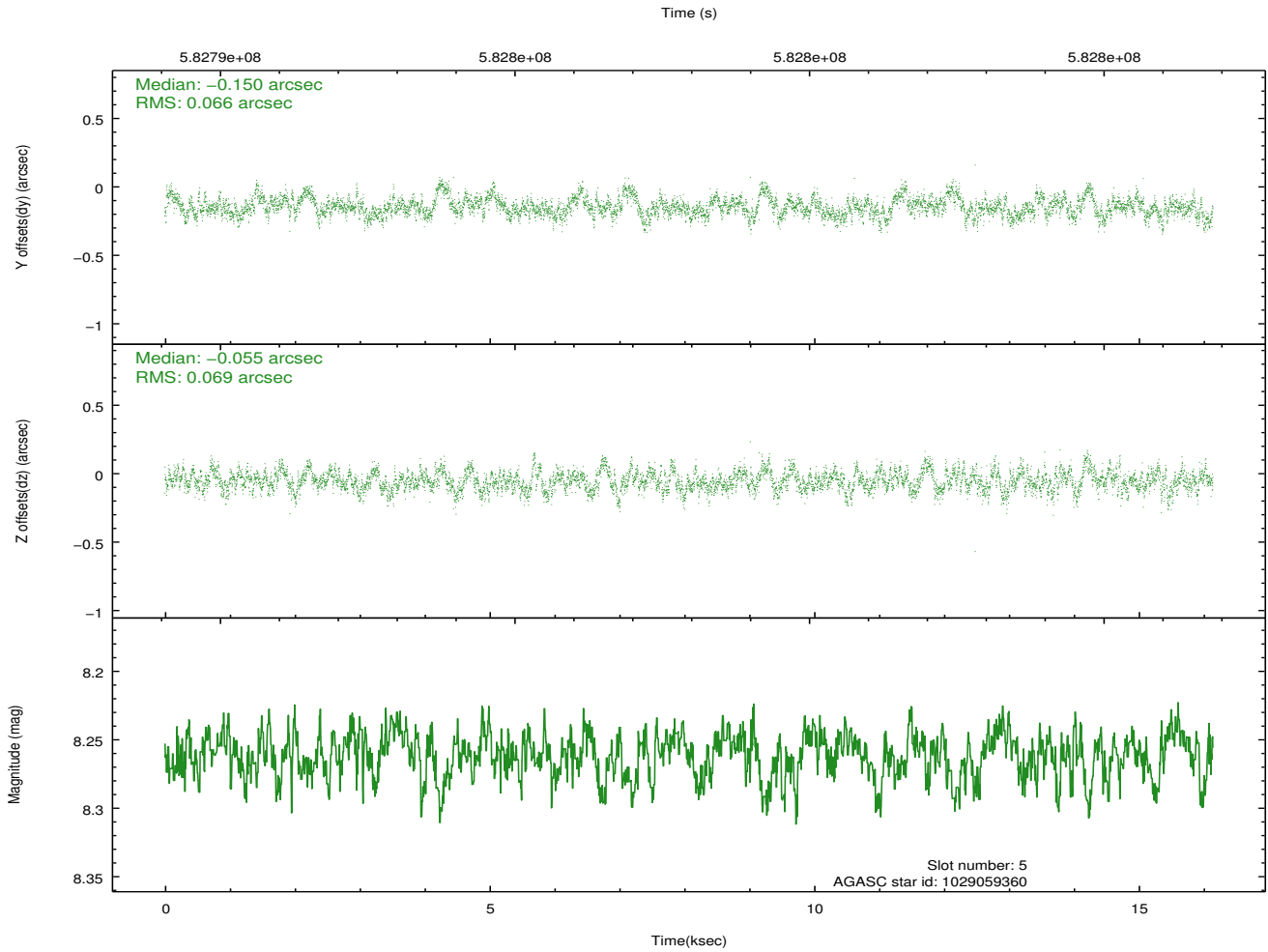
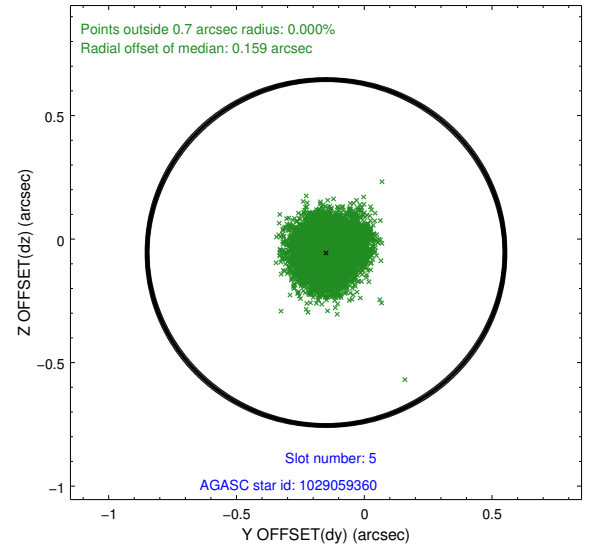
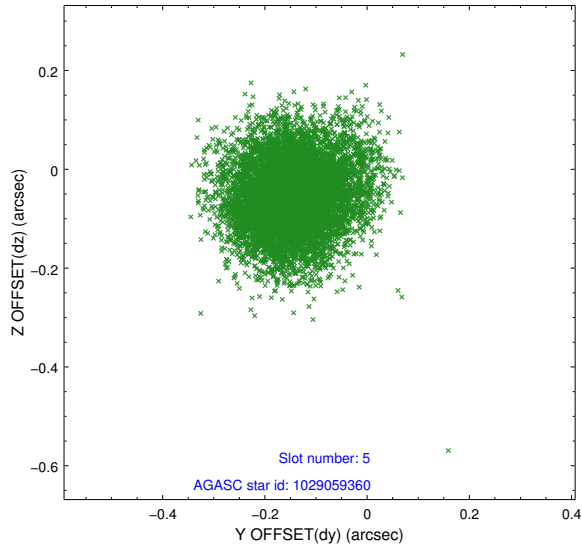
2.4.1 Slot 3



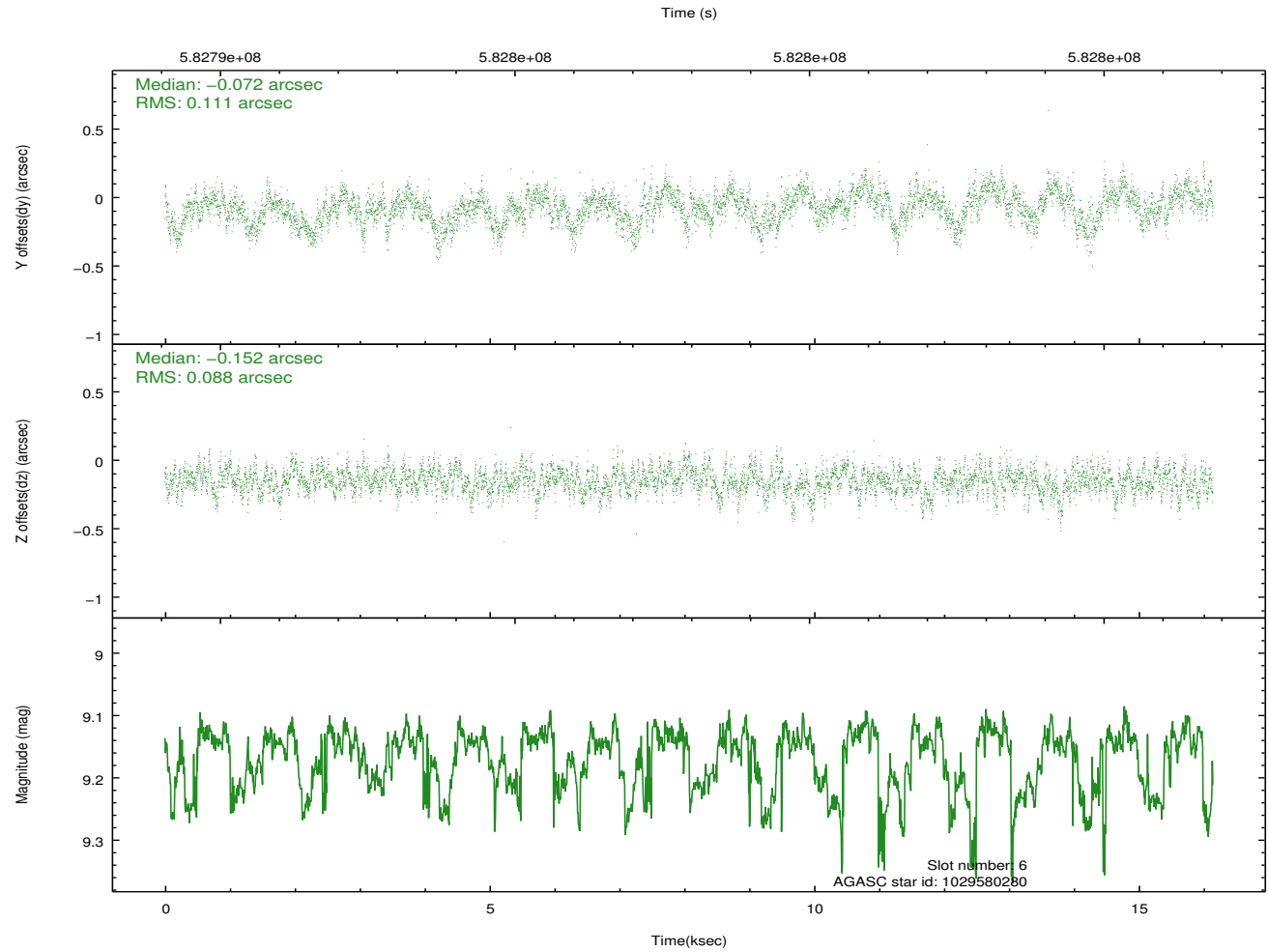
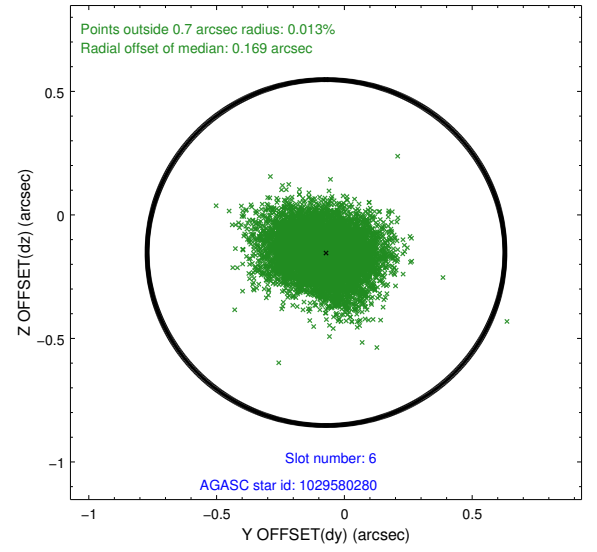
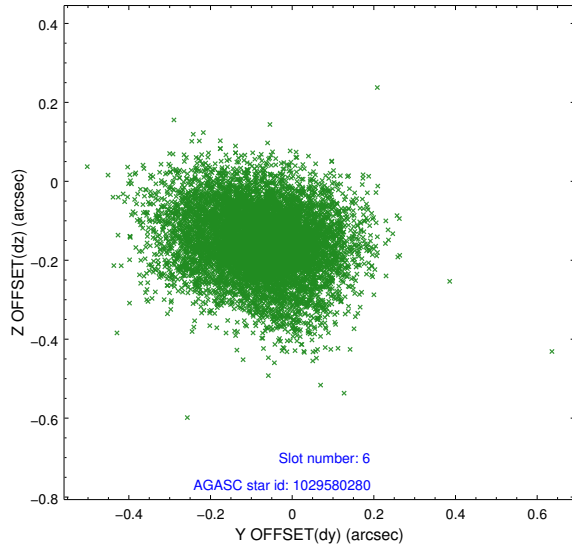
2.4.2 Slot 4



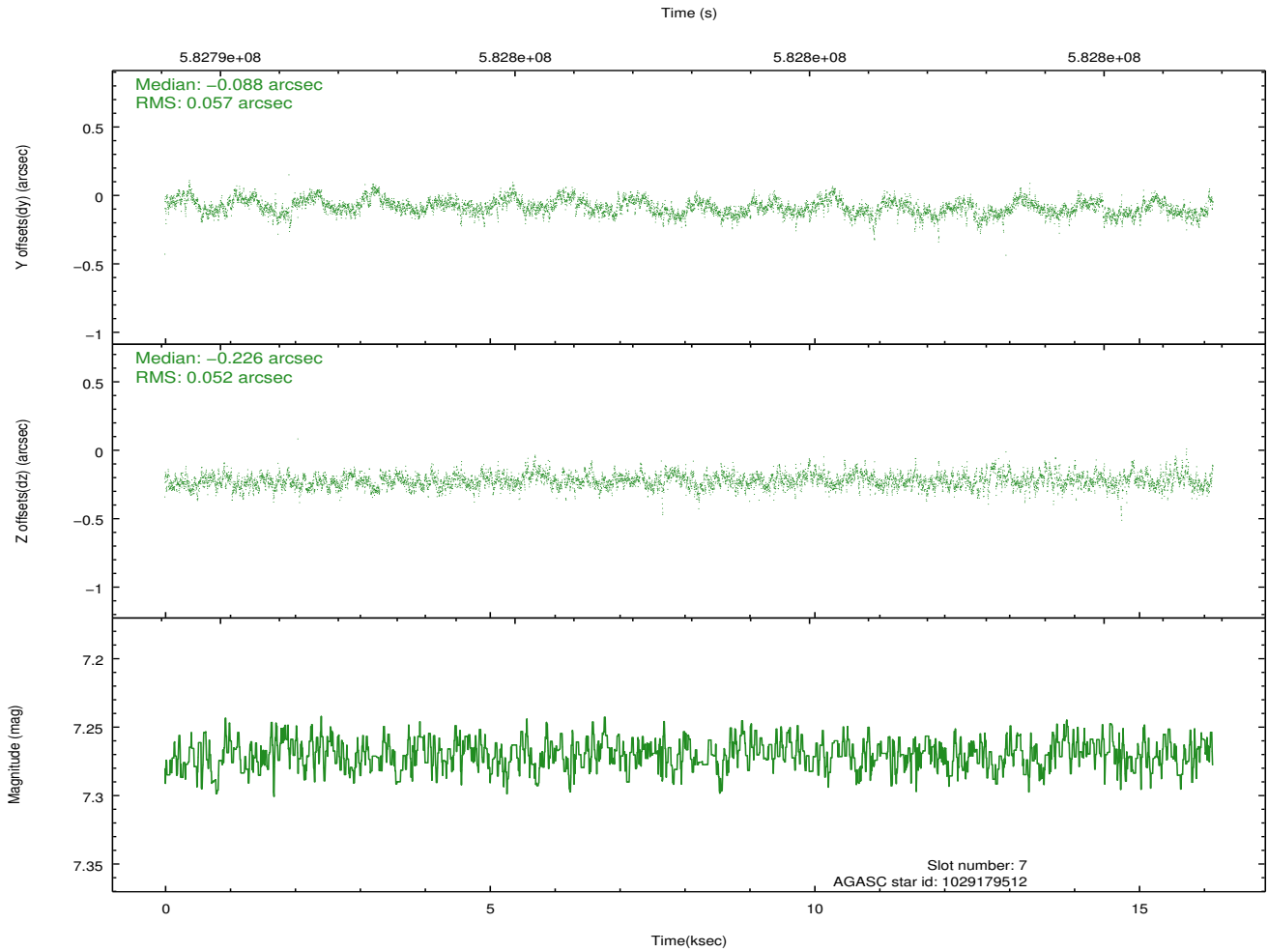
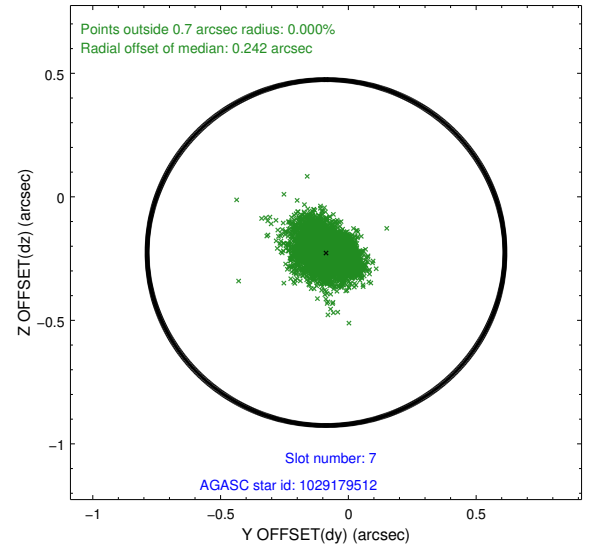
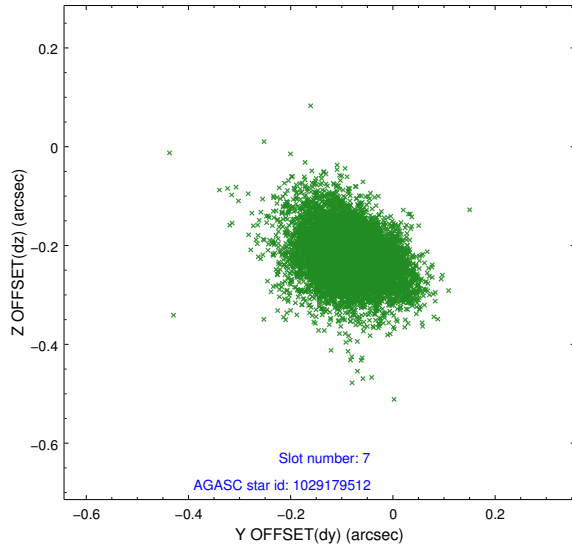
2.4.3 Slot 5



2.4.4 Slot 6

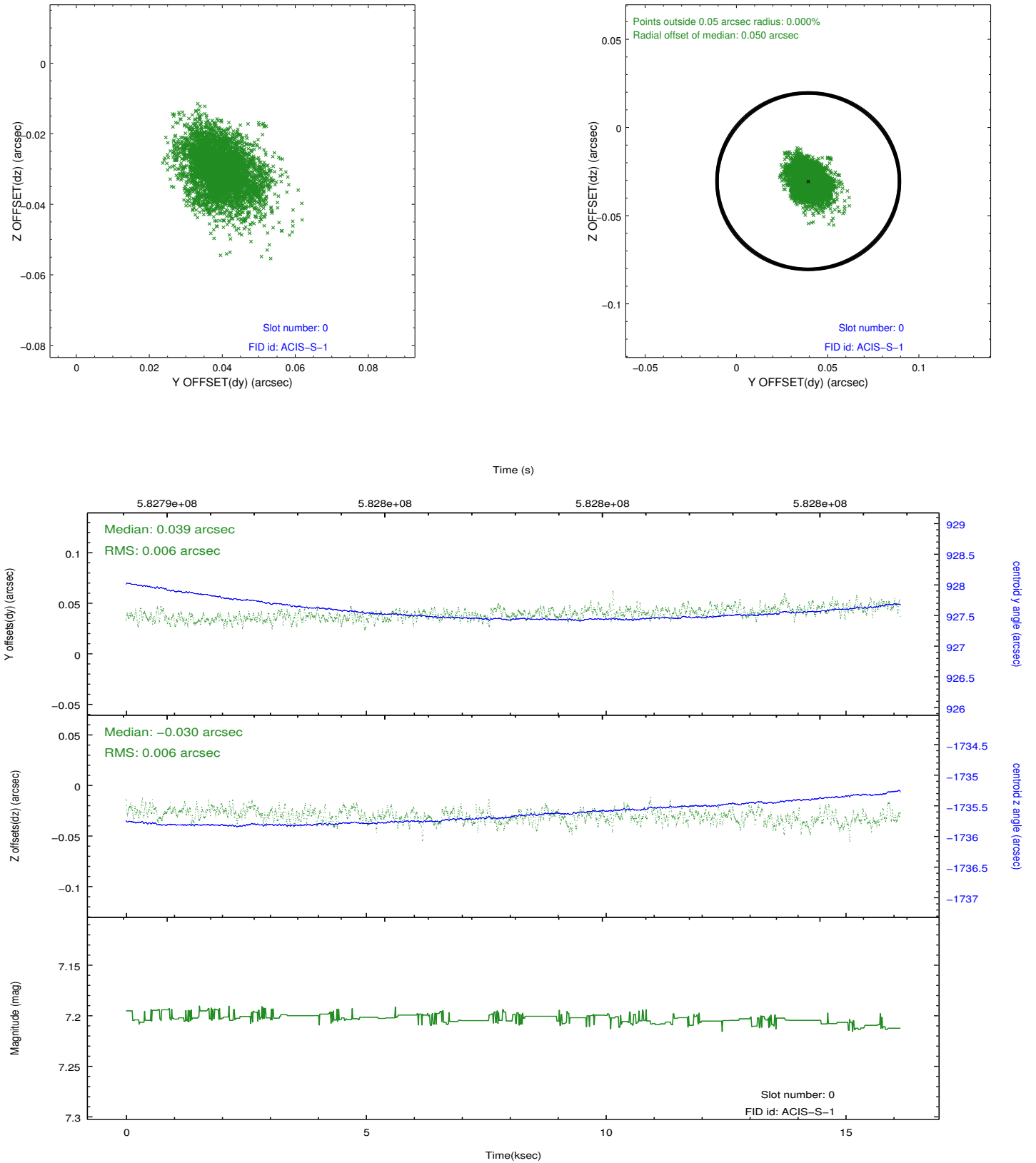


2.4.5 Slot 7

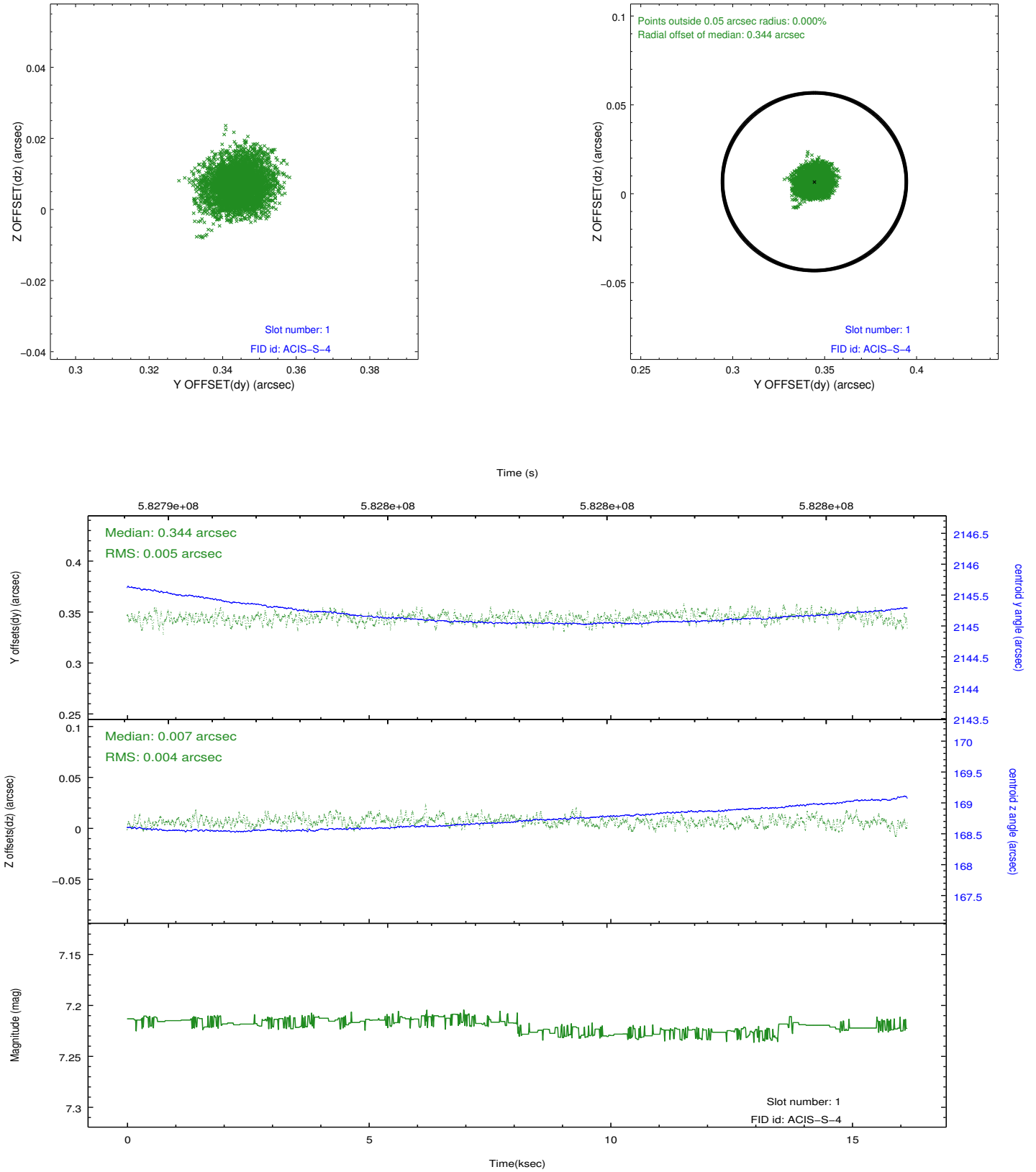


2.5 FID Slots

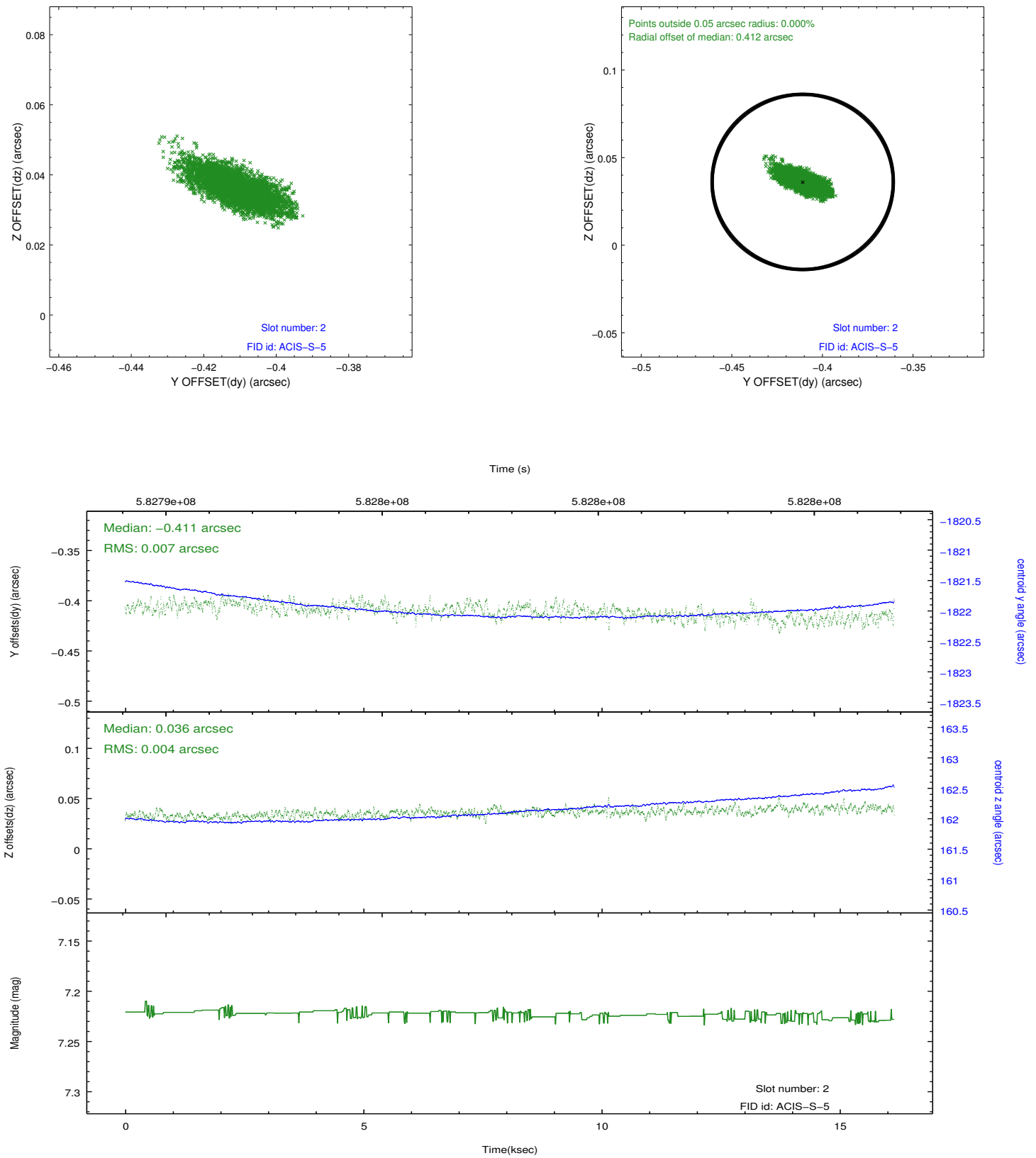
2.5.1 Slot 0



2.5.2 Slot 1



2.5.3 Slot 2



A Summary

A.1 Status

V&V Scientist	Joy Nichols
V&V Date (YYYY-MM-DD)	2016.06.21
V&V Edition	1
V&V Disposition and Status	OK
V&V Charge Time	16.060477236152

A.2 Comments