

V&V Reference Report

L2 ASCDS Version : 10.4.2.1

Observation 17434 - L2 Version 1
Chandra X-Ray Center

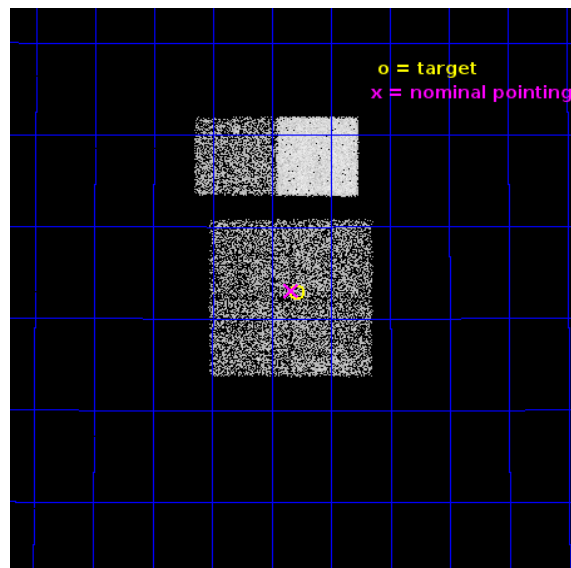
L2 Processing Date : Nov 4 2015

Contents

1	Front	2
2	OBI	3
2.1	OBI	3
2.1.1	Images	3
2.1.2	Bias	3
2.1.3	Parameters	4
2.1.4	Events	4
2.2	Compared Parameters	5
2.3	Aspect	6
2.4	Star Slots	9
2.4.1	Slot 3	9
2.4.2	Slot 4	10
2.4.3	Slot 5	11
2.4.4	Slot 6	12
2.4.5	Slot 7	13
2.5	FID Slots	14
2.5.1	Slot 0	14
2.5.2	Slot 1	15
2.5.3	Slot 2	16
A	Summary	17
A.1	Status	17
A.2	Comments	17

1 Front

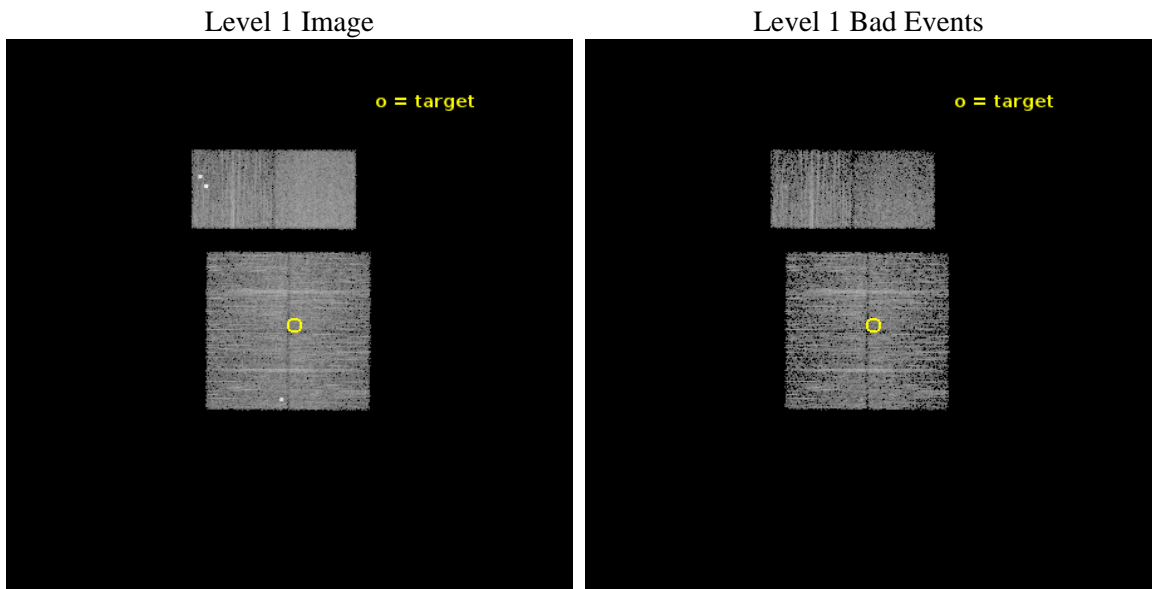
seq_num	901181	Sequence number
obs_id	17434	Observation id
title	A new moderate-depth contiguous layer of the Chandra Bootes field	
observer	Dr. Stephen Murray	Principal investigator
object	Bootes mod depth 3	Source name
dtcycle	0	
cycle	P	events from which exps? Prim/Second/Both
ra_targ	217.197083	Observer's specified target RA [deg]
dec_targ	34.214222	Observer's specified target Dec [deg]
ra_nom	217.20857976729	Nominal RA [deg]
dec_nom	34.2174978878	Nominal Dec [deg]
roll_nom	0.20227468406723	Nominal Roll [deg]
revision	1	Processing version of data
ontime	6054.4000902176	Sum of GTIs [s]
livetime	5977.7356307532	Livetime [s]
ontime0	6054.4000902176	Sum of GTIs [s]
ontime1	6054.4000902176	Sum of GTIs [s]
ontime2	6054.4000902176	Sum of GTIs [s]
ontime3	6054.4000902176	Sum of GTIs [s]
ontime6	6054.4000902176	Sum of GTIs [s]
ontime7	6054.4000902176	Sum of GTIs [s]
l2events	34644	Number of level 2 events



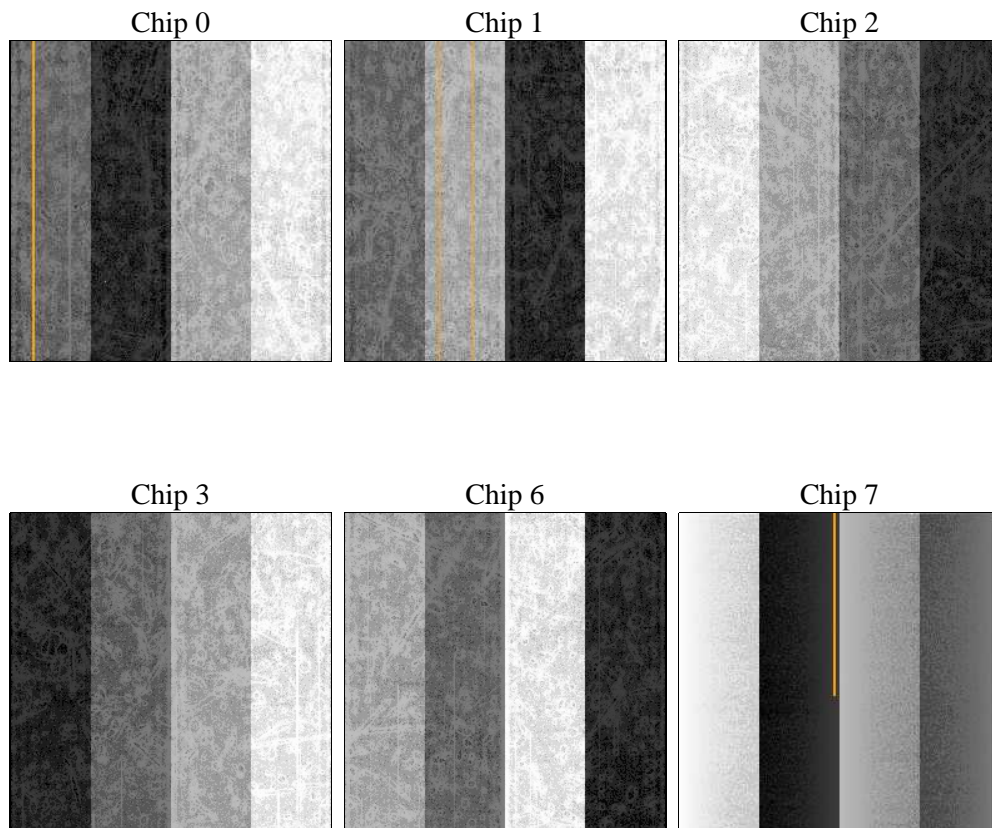
2 OBI

2.1 OBI

2.1.1 Images



2.1.2 Bias



2.1.3 Parameters

obi_num	0	Obi number	sched_exp_time	6296.664000	[s] Scheduled observation exposure time
ascdsver	10.4.2.1	Processing system revision	ontime	6054.4000902176	Sum of GTIs [s]
caldsver	4.6.10a	 	ontime0	6054.4000902176	Sum of GTIs [s]
date	2015-11-04T12:59:48	Date and time of file creation	ontime1	6054.4000902176	Sum of GTIs [s]
revision	1	Processing version of data	ontime2	6054.4000902176	Sum of GTIs [s]
			ontime3	6054.4000902176	Sum of GTIs [s]
			ontime6	6054.4000902176	Sum of GTIs [s]
			ontime7	6054.4000902176	Sum of GTIs [s]
			l1events	208543	Number of level 1 events

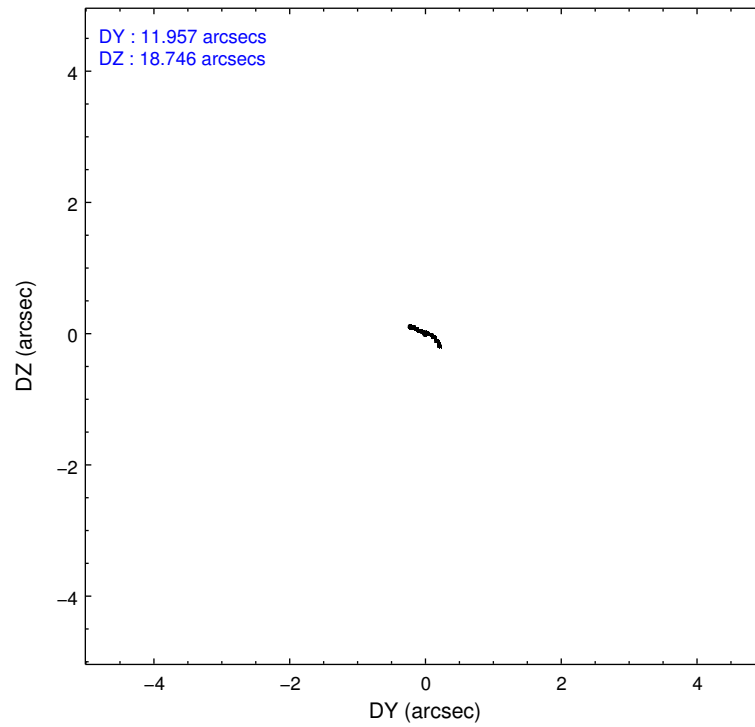
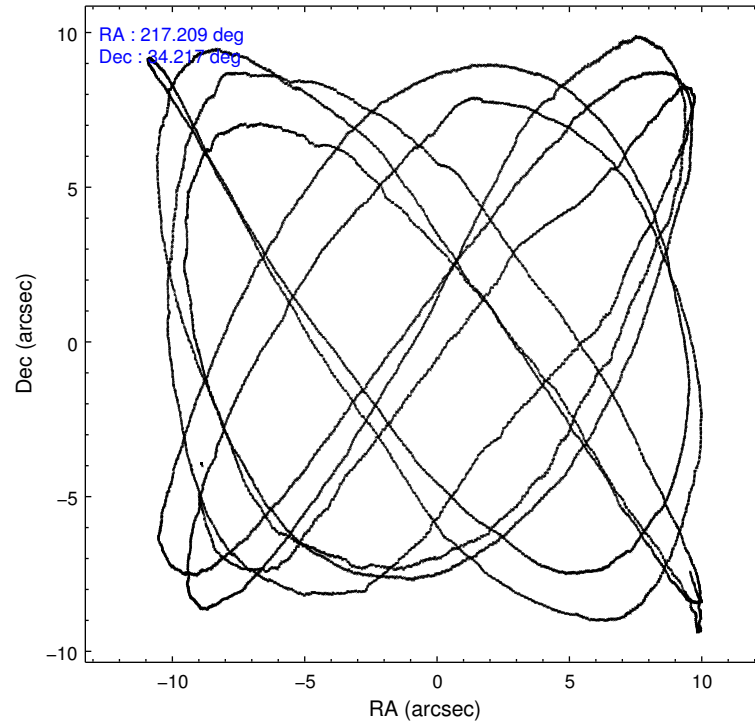
2.1.4 Events

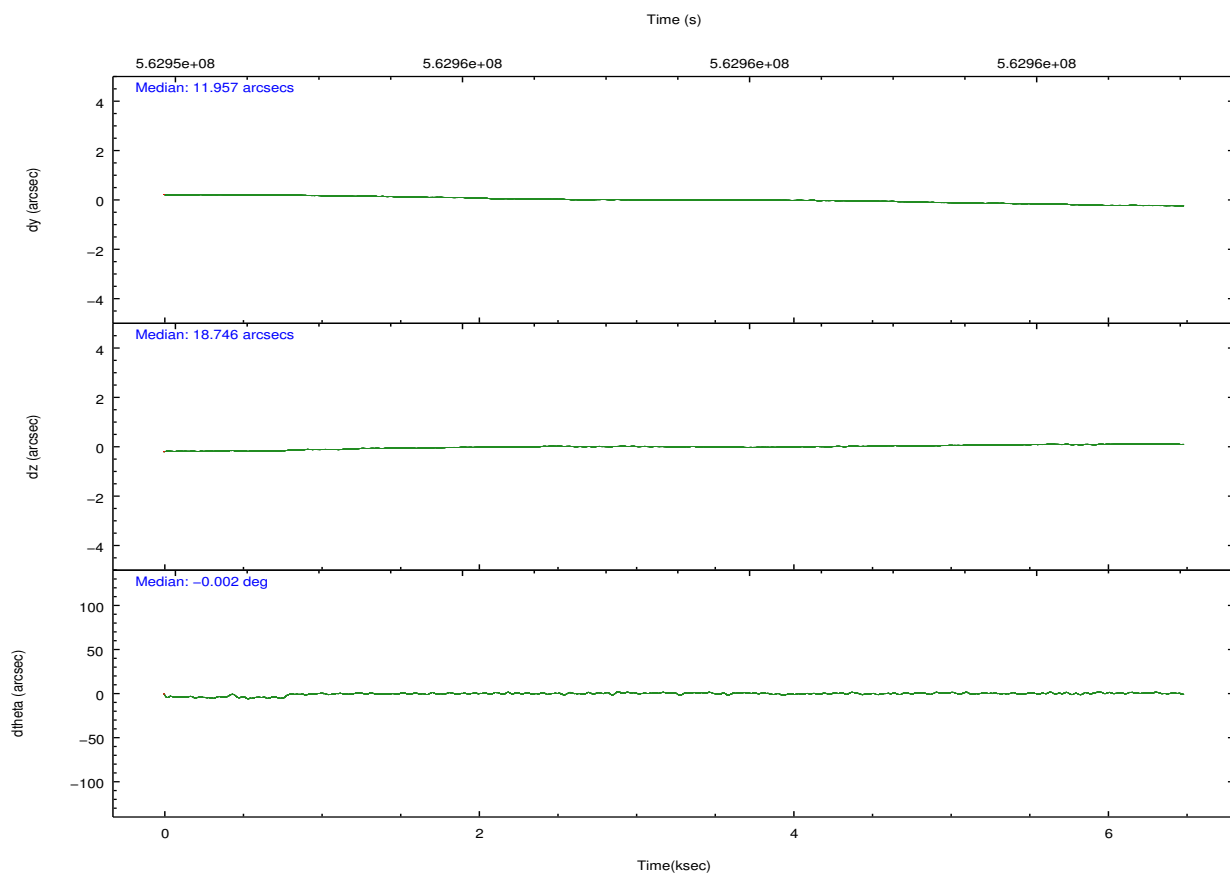
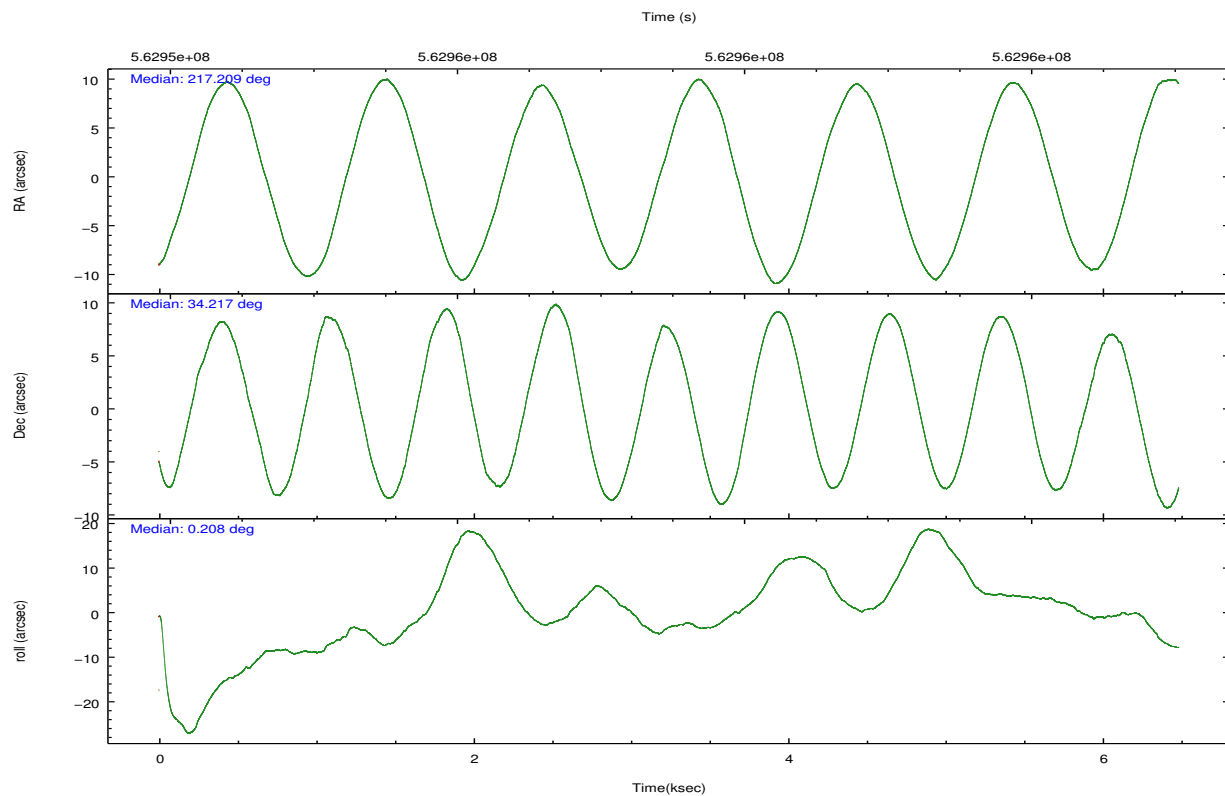
	ccd 0	ccd 1	ccd 2	ccd 3	ccd 6	ccd 7		ccd 0	ccd 1	ccd 2	ccd 3	ccd 6	ccd 7
level 1 events	31111	30635	33626	30770	38546	43855	grade 0 events	2829	1441	1272	1298	5145	1676
rejected events	25842	26510	29962	27236	29041	24779		9%	4%	3%	4%	13%	3%
rejected %	83%	86%	89%	88%	75%	56%	grade 1 events	31	14	22	25	40	50
								0%	0%	0%	0%	0%	0%
							grade 2 events	944	1049	953	789	2664	4009
								3%	3%	2%	2%	6%	9%
							grade 3 events	358	383	358	369	392	1626
								1%	1%	1%	1%	1%	3%
							grade 4 events	355	384	393	375	370	1551
								1%	1%	1%	1%	0%	3%
							grade 5 events	1459	1465	1364	1690	1696	4540
								4%	4%	4%	5%	4%	10%
							grade 6 events	786	870	692	707	945	10229
								2%	2%	2%	2%	2%	23%
							grade 7 events	24349	25029	28572	25517	27294	20174
								78%	81%	84%	82%	70%	46%

2.2 Compared Parameters

Parameter	Planned	Actual	Parameter	Planned	Actual
Instrument	ACIS	ACIS	Obspar format version number	7	7
Detector	ACIS-012367	ACIS-012367	Obspar file type	PREDICTED	ACTUAL
Grating	NONE	NONE	Obspar update status	NONE	UPDATED
Data mode	VFAINT	VFAINT	CCD I0 on	Y	Y
Observation mode	POINTING	POINTING	CCD I1 on	Y	Y
[deg] Pointing RA	217.179752	217.2085797672867	CCD I2 on	Y	Y
[deg] Pointing Dec	34.203556	34.21749788780033	CCD I3 on	Y	Y
[deg] Pointing Roll	0.009739	0.2022746840672295	CCD S0 on	N	N
[mm] SIM focus pos	-0.782348	-0.7809083437167272	CCD S1 on	N	N
[mm] SIM defocus	0	0.001439871863259334	CCD S2 on	O2	Y
[mm] SIM translation stage pos	-233.592463	-233.5874344608287	CCD S3 on	O1	Y
[mm] SIM translation stage offset	0	-0.005018542100998502	CCD S4 on	N	N
[s] Observation start time (MET)	562954423.184000	562954047.35425	CCD S5 on	N	N
Observation start date	2015-11-03T16:12:35	2015-11-03T16:07:27	Number of optional ACIS chips dropped	0	0
[s] Observation end time (MET)	562960719.184000	562960956.87964	On-chip summing requested	N	N
Observation end date	2015-11-03T17:57:31	2015-11-03T18:02:36	Subarray requested	NONE	NONE
Read mode	TIMED	TIMED	Alternating exposures requested	N	N
			[s] Primary exposure time	0.000000	3.2

2.3 Aspect



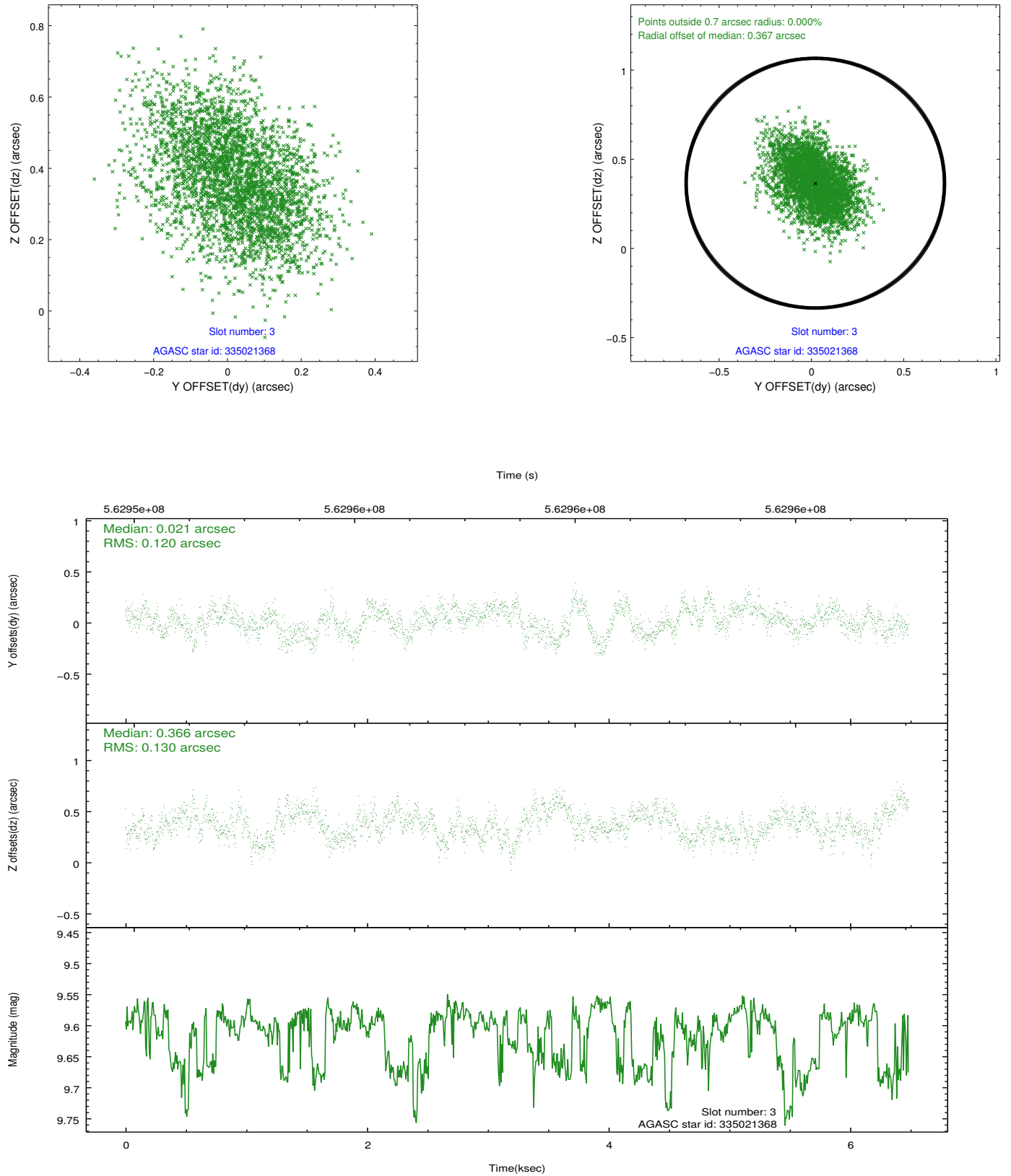


Slot Statistics

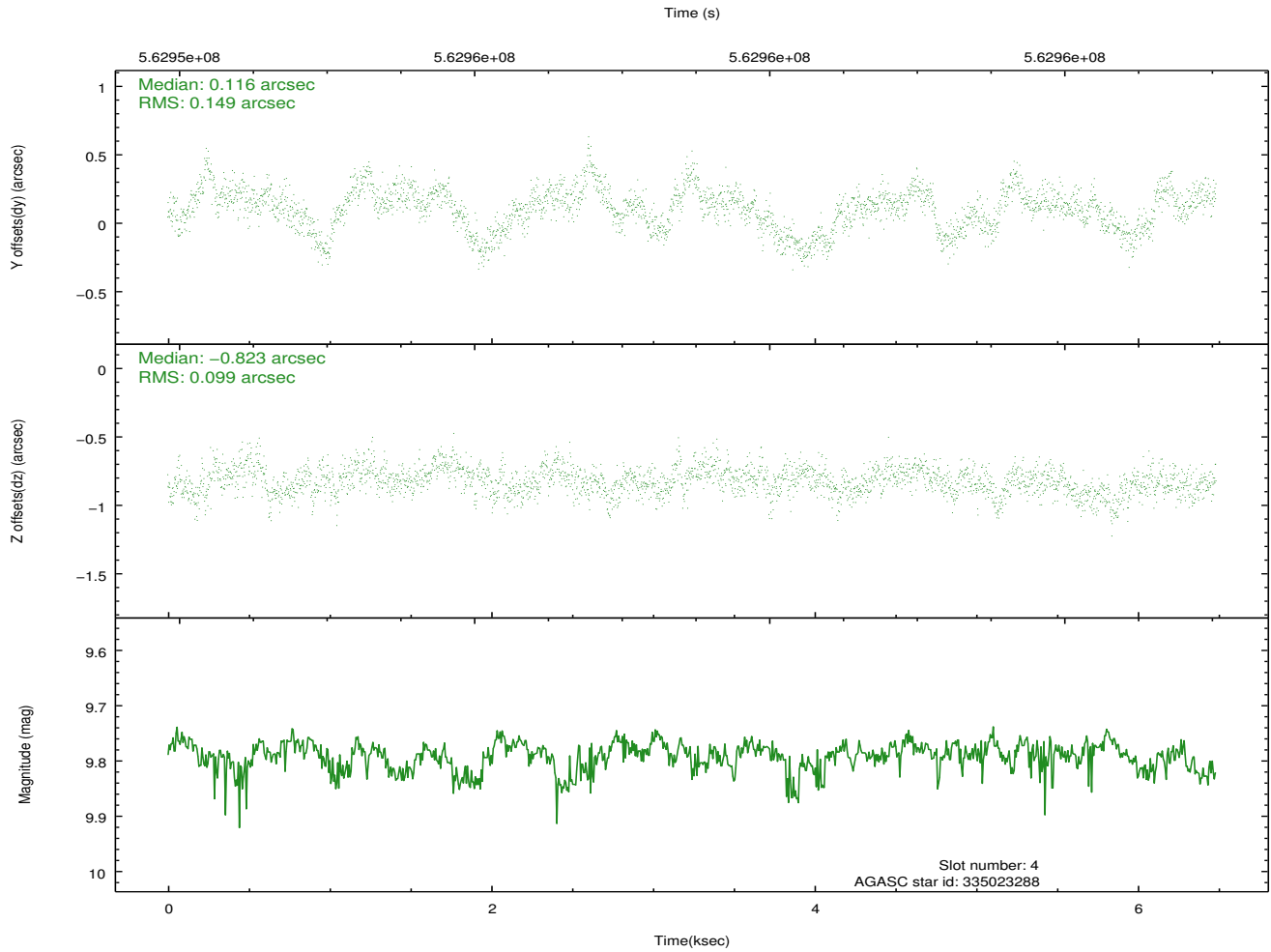
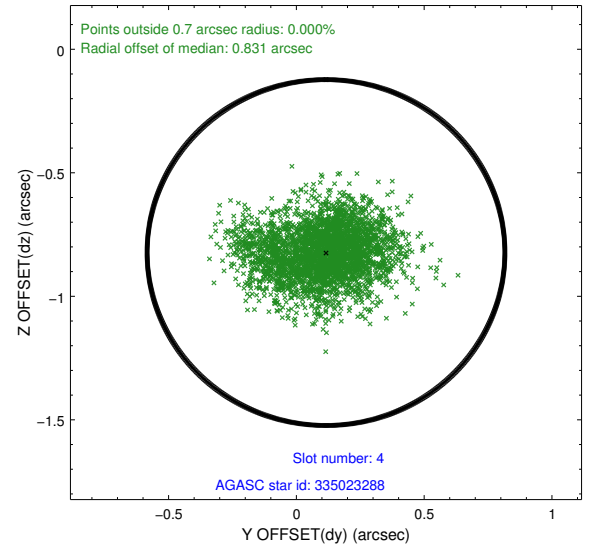
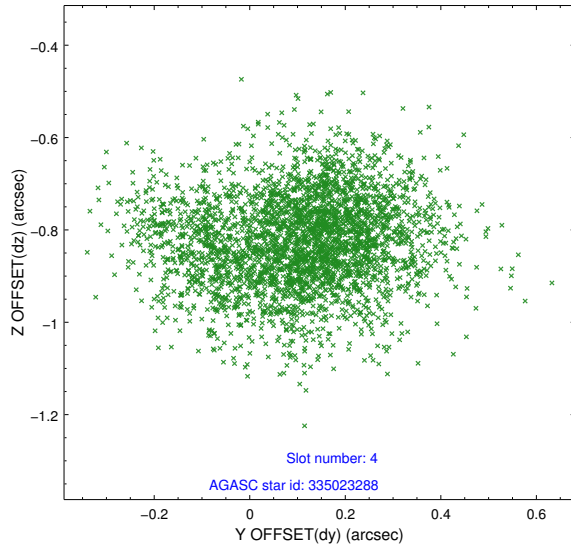
slot	status	used	id	mag	n_pts	med_dy	med_dz	dr1	dr2	ra	dec	mean_y	mean_z
0	FID		ACIS-I-2	7.14	1582	-0.172	-0.039	0.011	0.038	0.000000	0.000000	-766.77	-848.84
1	FID		ACIS-I-4	7.19	1580	0.387	0.104	0.012	0.021	0.000000	0.000000	2147.44	1057.02
2	FID		ACIS-I-5	7.25	1581	-0.314	0.004	0.012	0.019	0.000000	0.000000	-1819.58	1055.79
3	GUIDE	used	335021368	9.61	3160	0.021	0.366	0.190	0.303	217.529643	33.934817	1044.81	-965.26
4	GUIDE	used	335023288	9.79	3160	0.116	-0.823	0.191	0.316	217.791365	34.425735	1816.84	804.03
5	GUIDE	used	335025848	9.68	3161	0.328	0.605	0.196	0.338	217.530531	33.778292	1050.15	-1528.26
6	GUIDE	used	335028696	9.19	3159	-0.424	0.245	0.135	0.212	217.260519	33.844112	241.04	-1293.88
7	GUIDE	used	335030384	8.81	3163	-0.041	-0.397	0.118	0.187	216.806407	34.722197	-1104.19	1869.00

2.4 Star Slots

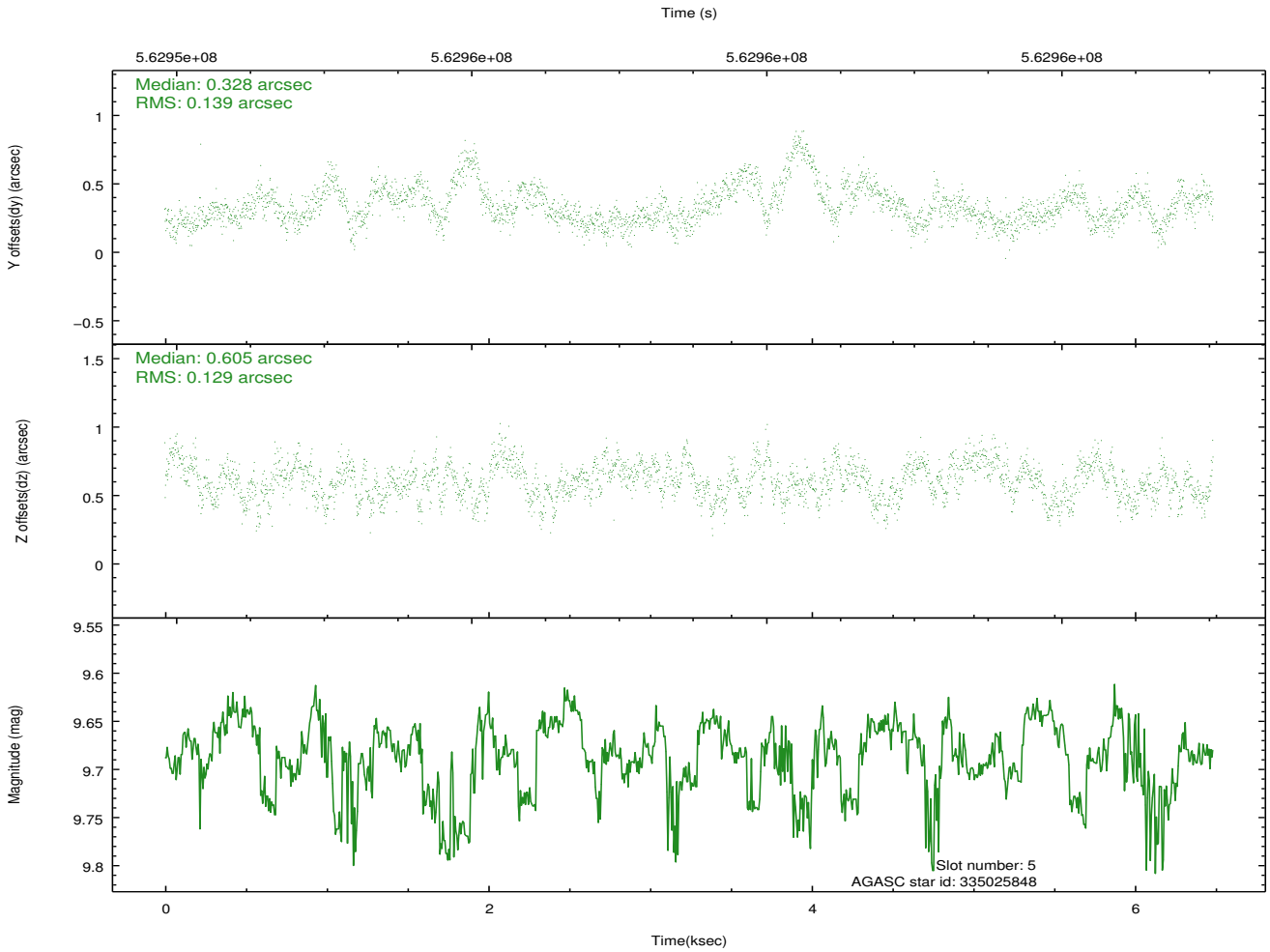
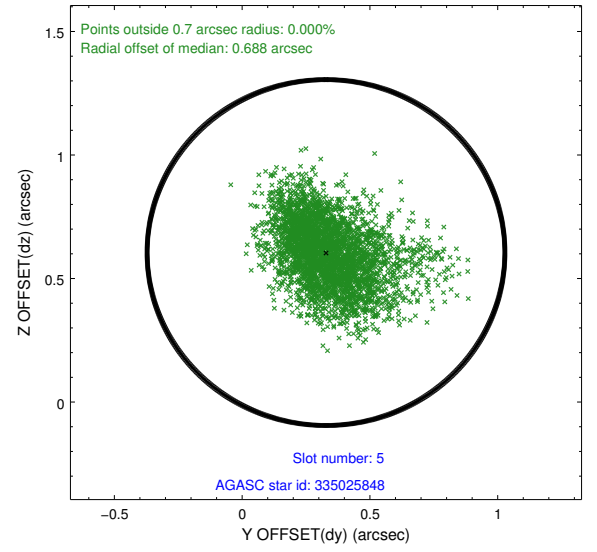
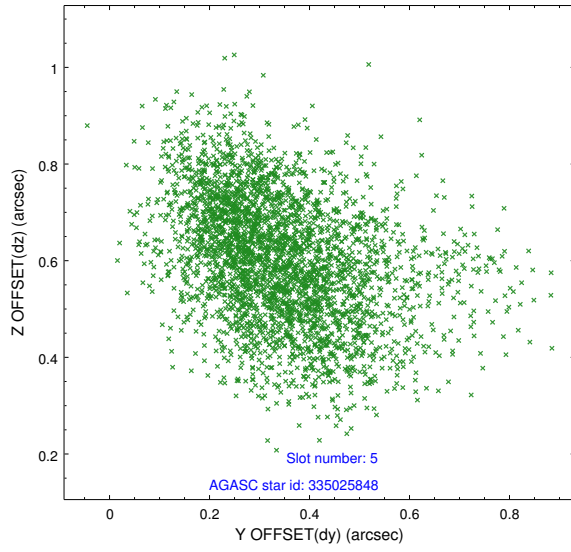
2.4.1 Slot 3



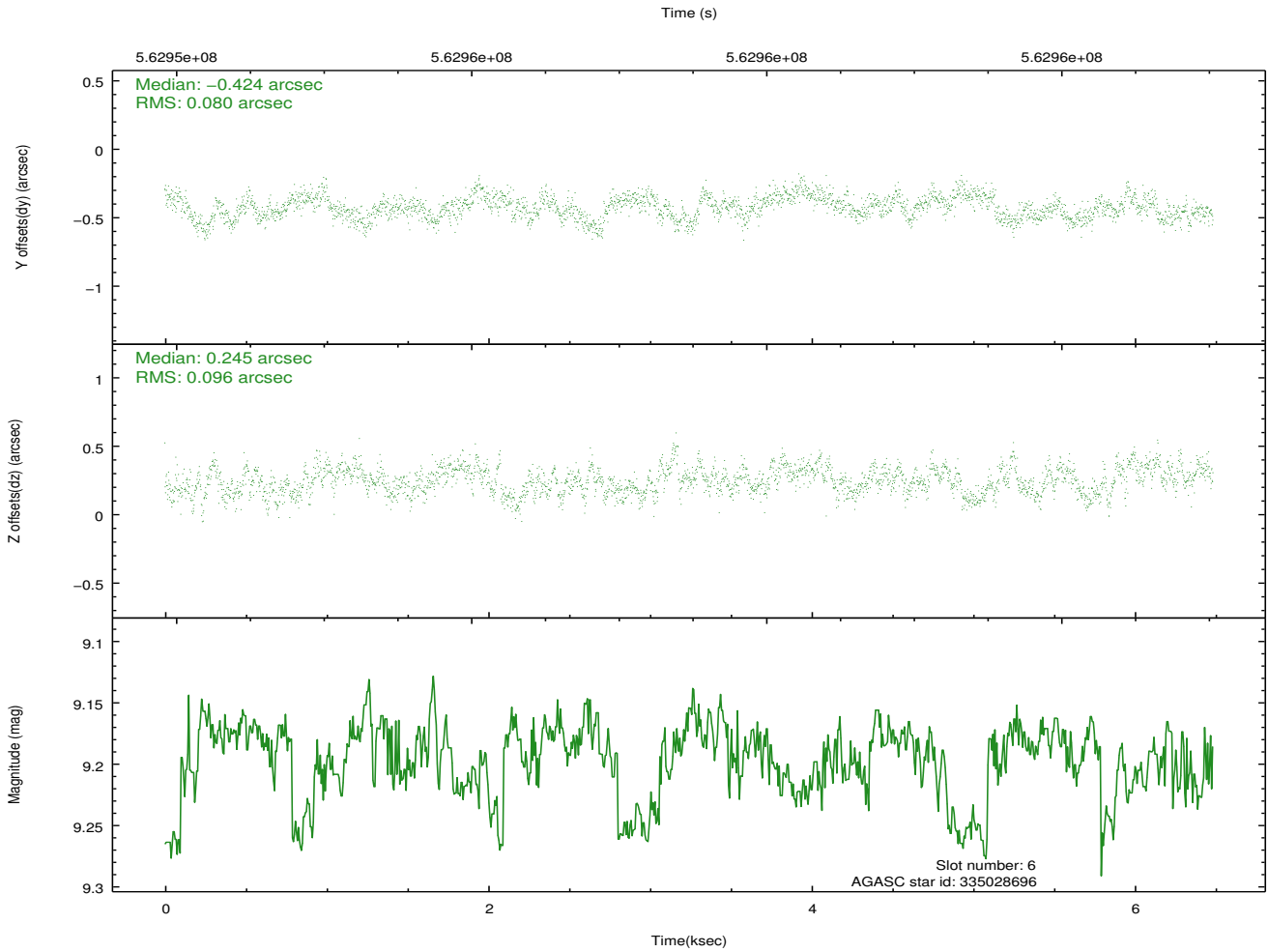
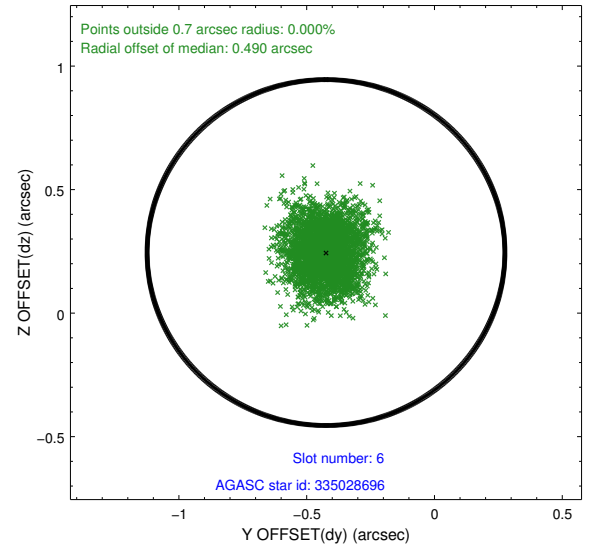
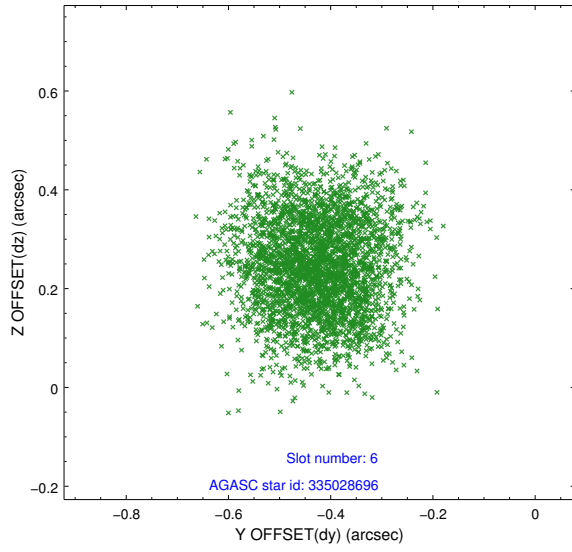
2.4.2 Slot 4



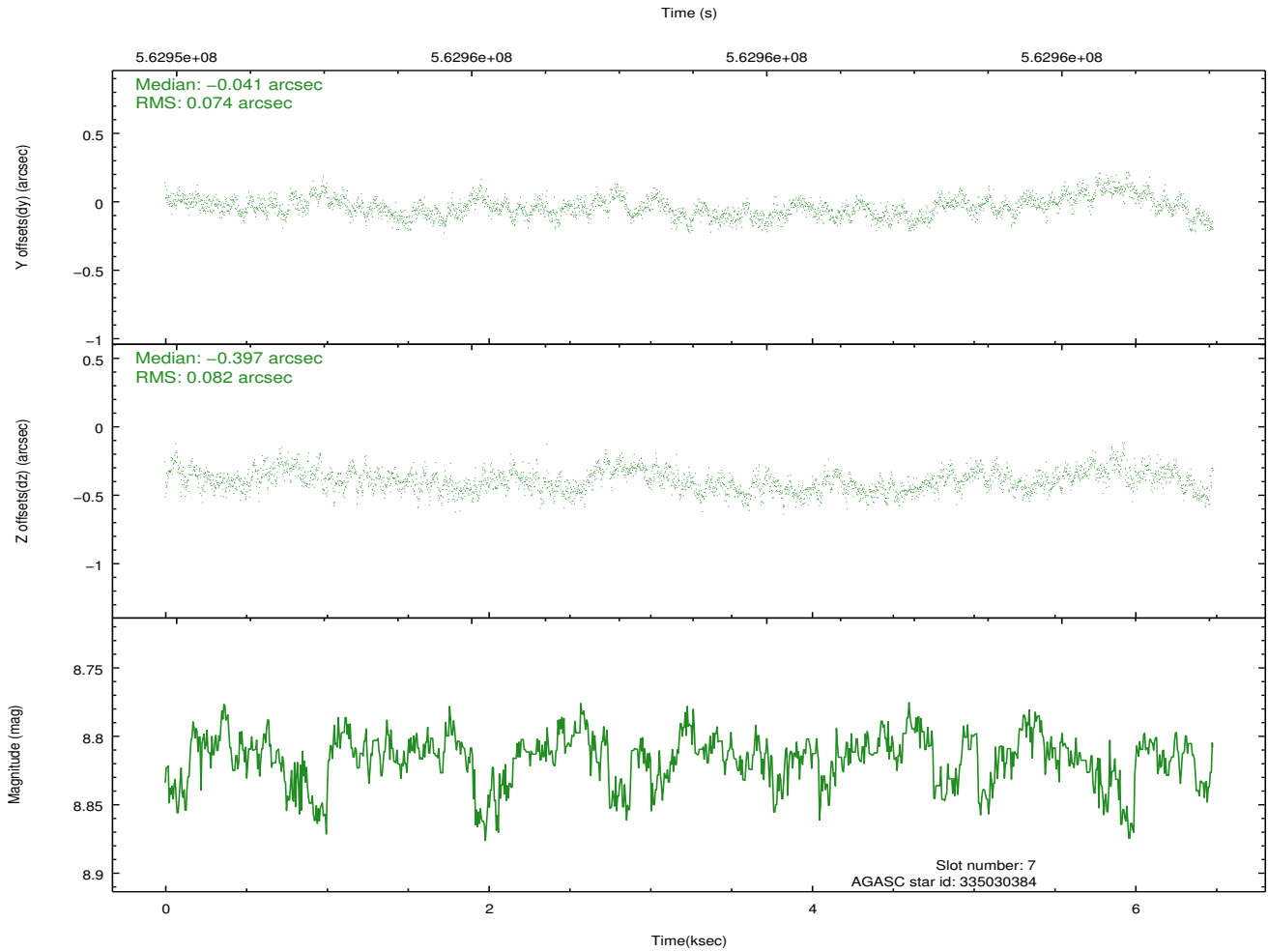
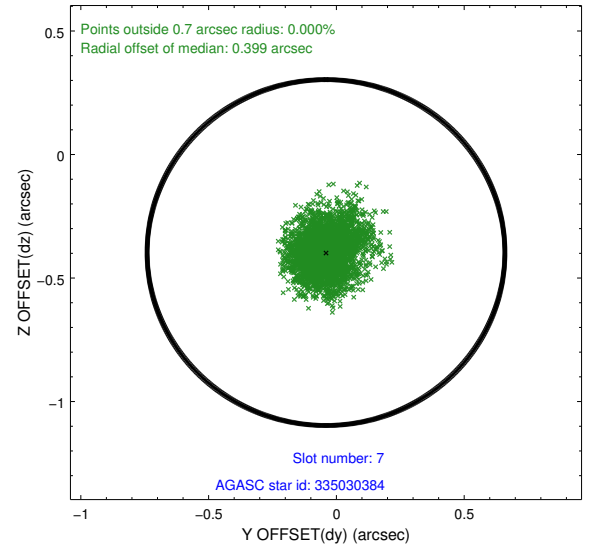
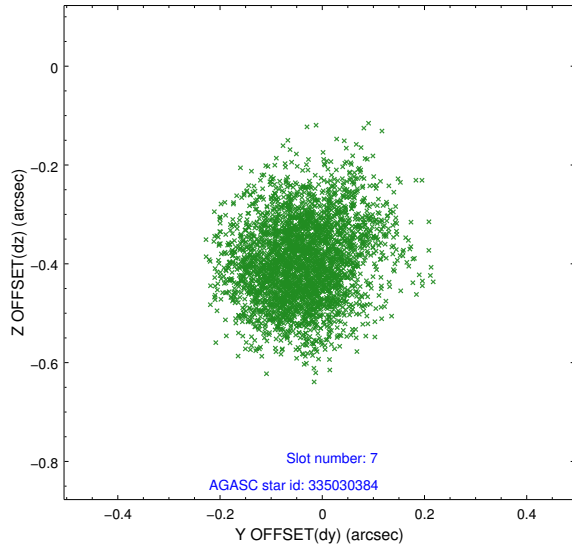
2.4.3 Slot 5



2.4.4 Slot 6

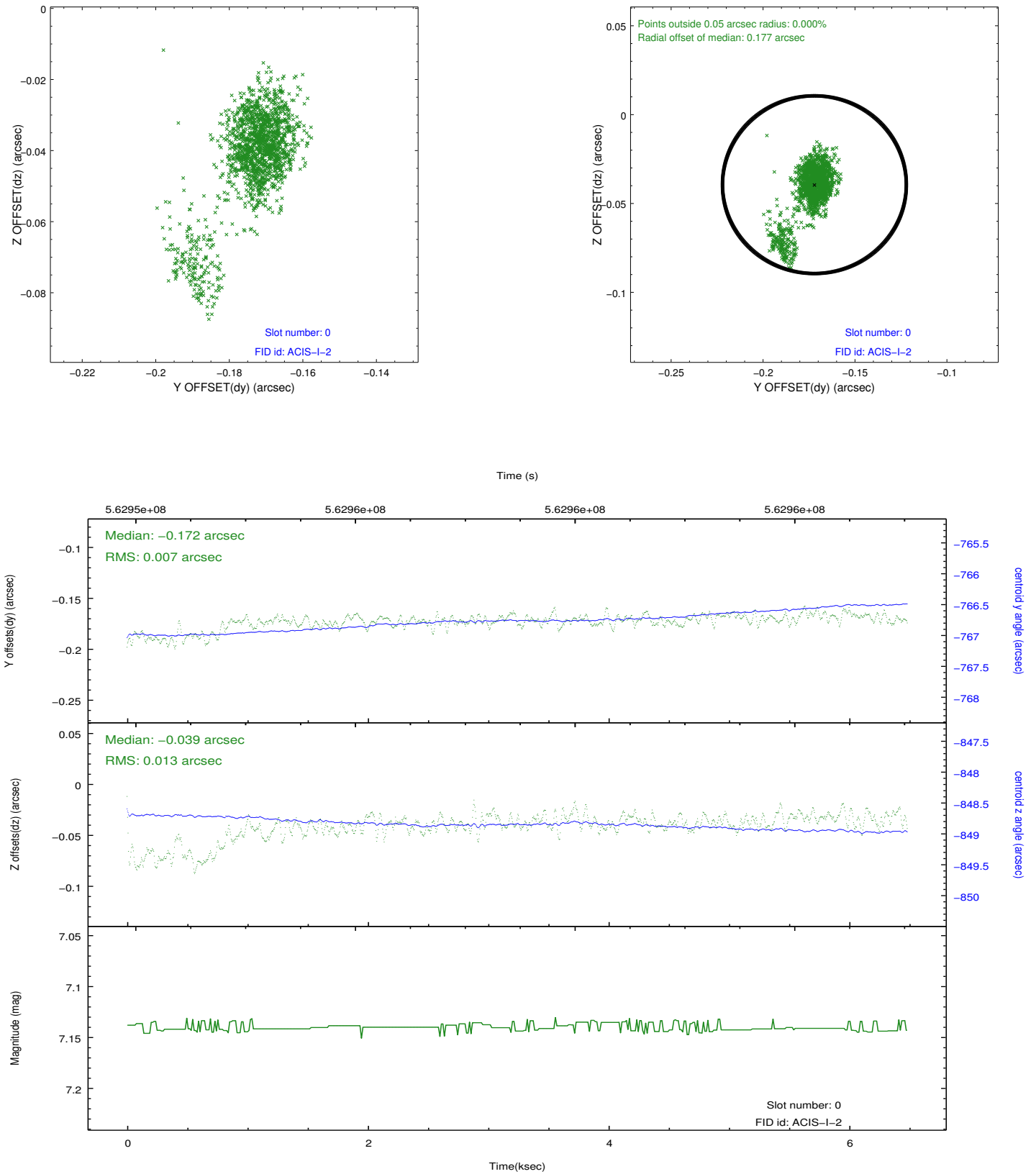


2.4.5 Slot 7

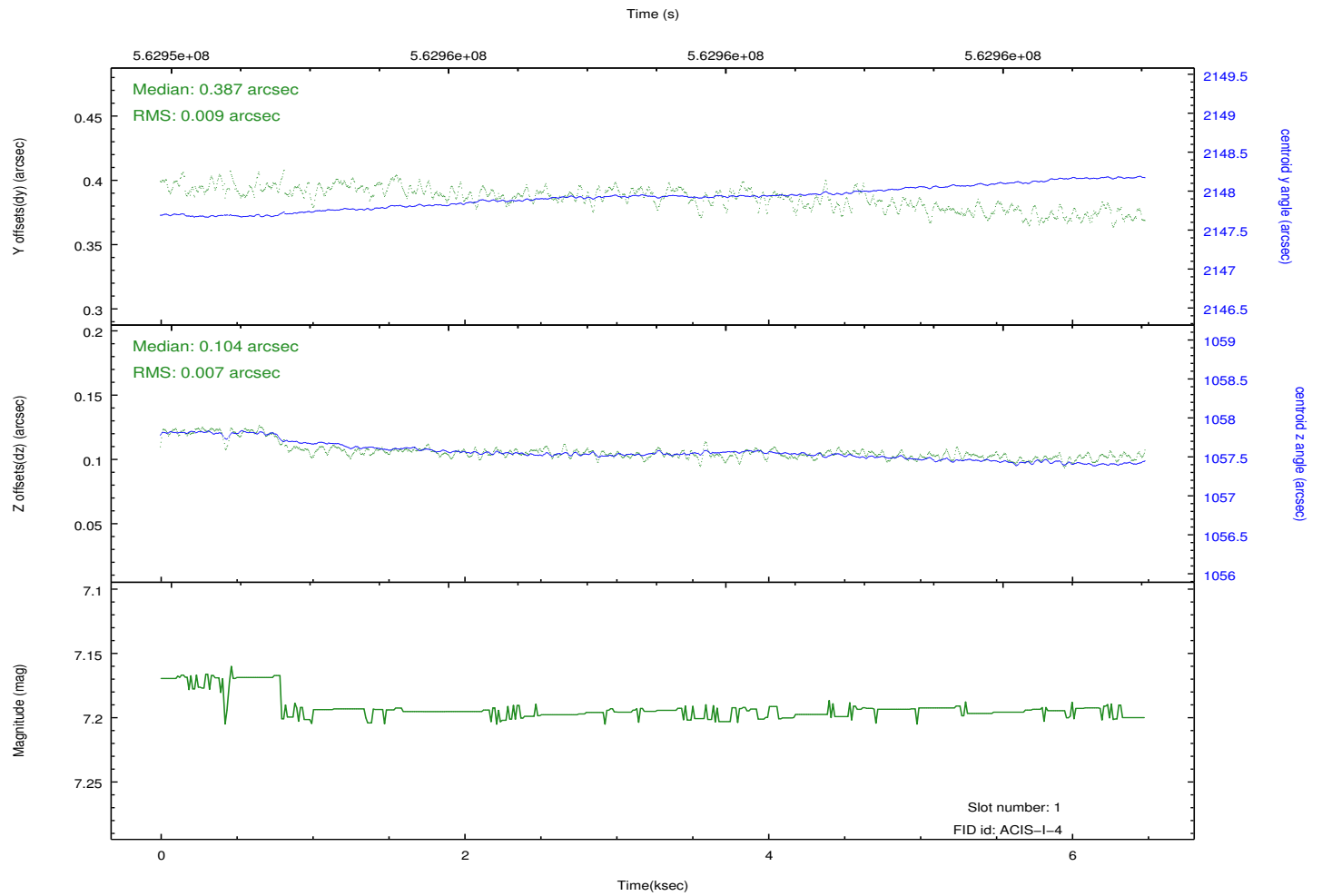
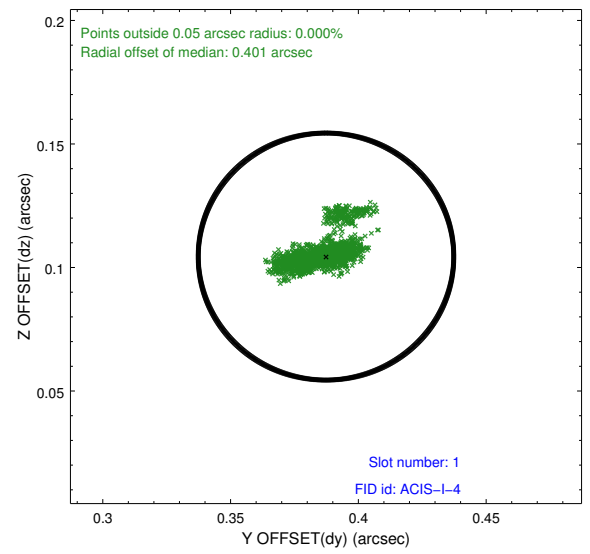
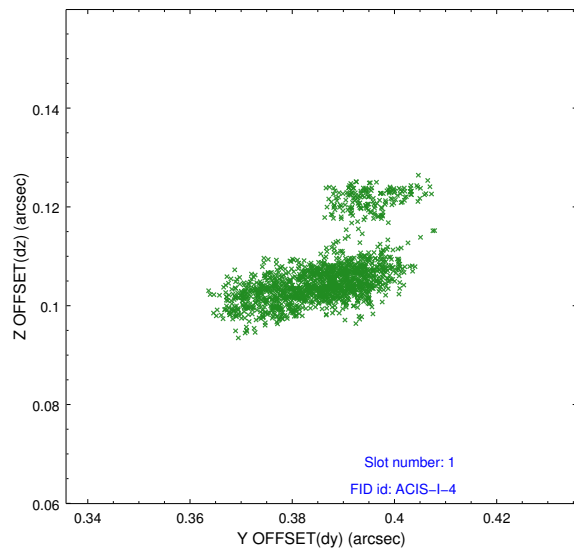


2.5 FID Slots

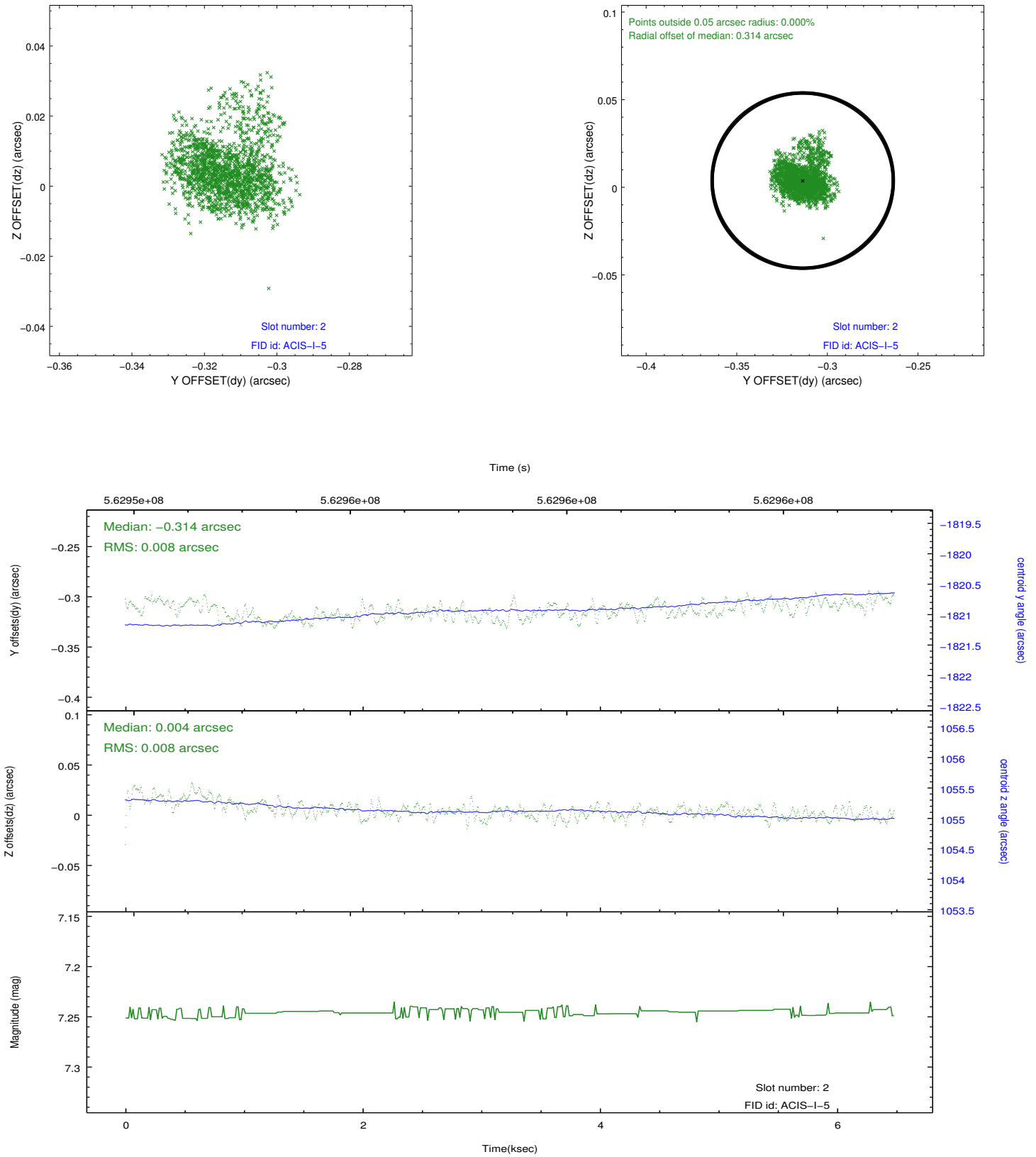
2.5.1 Slot 0



2.5.2 Slot 1



2.5.3 Slot 2



A Summary

A.1 Status

V&V Scientist	Jen Lauer
V&V Date (YYYY-MM-DD)	2015.11.04
V&V Edition	1
V&V Disposition and Status	OK
V&V Charge Time	6.0544000902176

A.2 Comments

Roll preference met.