

V&V Reference Report

L2 ASCDS Version : 10.4.2.1

Observation 17433 - L2 Version 1
Chandra X-Ray Center

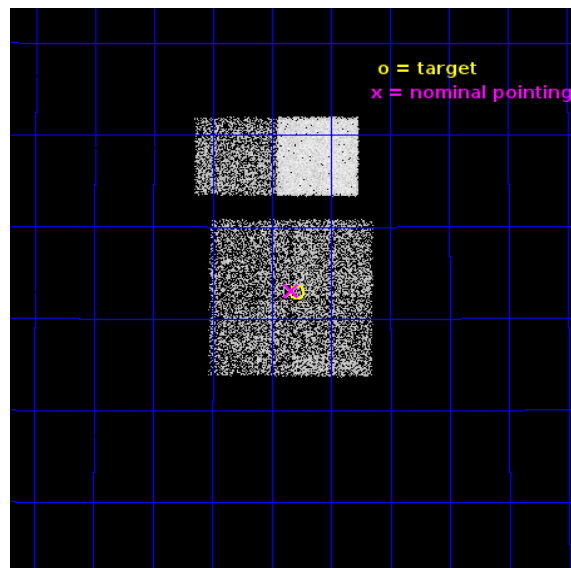
L2 Processing Date : Nov 4 2015

Contents

1	Front	2
2	OBI	3
2.1	OBI	3
2.1.1	Images	3
2.1.2	Bias	3
2.1.3	Parameters	4
2.1.4	Events	4
2.2	Compared Parameters	5
2.3	Aspect	6
2.4	Star Slots	9
2.4.1	Slot 3	9
2.4.2	Slot 4	10
2.4.3	Slot 5	11
2.4.4	Slot 6	12
2.4.5	Slot 7	13
2.5	FID Slots	14
2.5.1	Slot 0	14
2.5.2	Slot 1	15
2.5.3	Slot 2	16
A	Summary	17
A.1	Status	17
A.2	Comments	17

1 Front

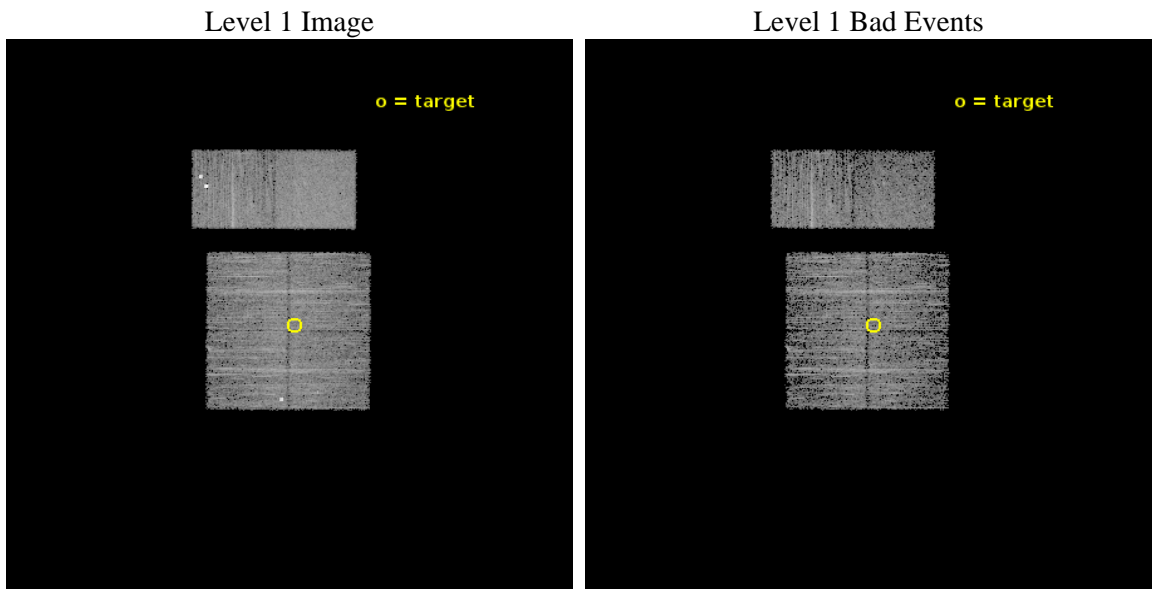
seq_num	901180	Sequence number
obs_id	17433	Observation id
title	A new moderate-depth contiguous layer of the Chandra Bootes field	
observer	Dr. Stephen Murray	Principal investigator
object	Bootes mod depth 3	Source name
dtcycle	0	
cycle	P	events from which exps? Prim/Second/Both
ra_targ	217.197083	Observer's specified target RA [deg]
dec_targ	34.214222	Observer's specified target Dec [deg]
ra_nom	217.20867142947	Nominal RA [deg]
dec_nom	34.217559181665	Nominal Dec [deg]
roll_nom	0.20203166411048	Nominal Roll [deg]
revision	1	Processing version of data
ontime	6002.6133240461	Sum of GTIs [s]
livetime	5926.6046197972	Livetime [s]
ontime0	6002.4902040958	Sum of GTIs [s]
ontime1	5999.2902736664	Sum of GTIs [s]
ontime2	6002.5722841024	Sum of GTIs [s]
ontime3	6002.6133240461	Sum of GTIs [s]
ontime6	6002.6954040527	Sum of GTIs [s]
ontime7	6002.654364109	Sum of GTIs [s]
l2events	34418	Number of level 2 events



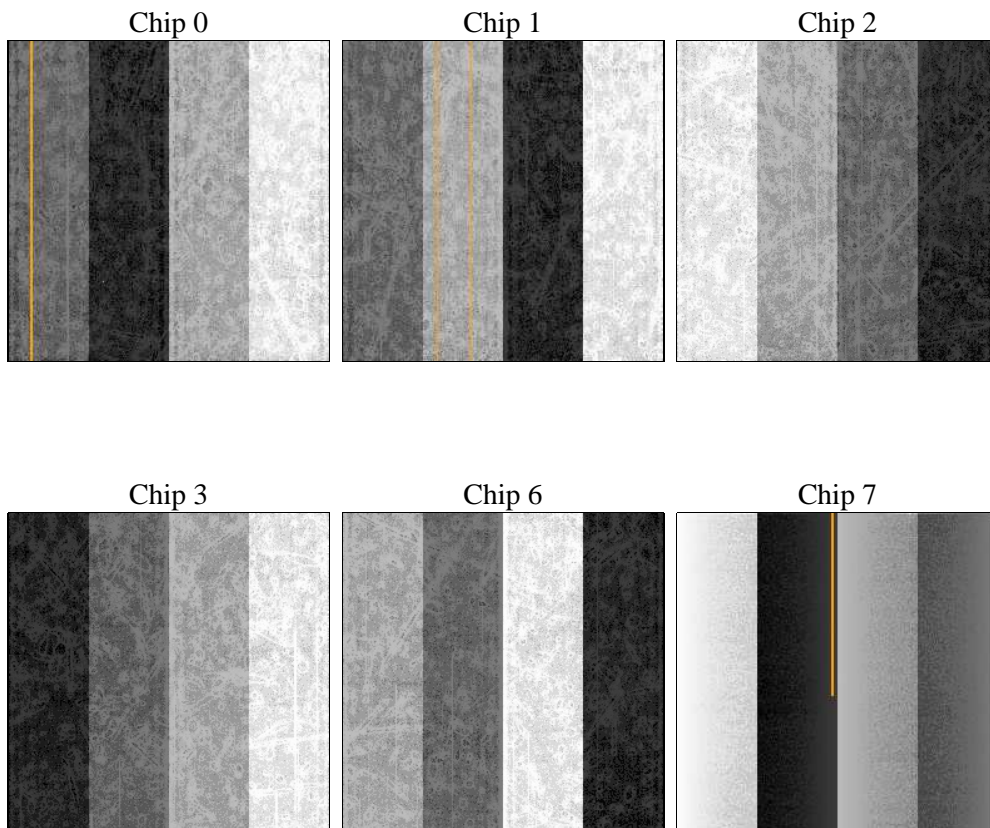
2 OBI

2.1 OBI

2.1.1 Images



2.1.2 Bias



2.1.3 Parameters

obi_num	0	Obi number	sched_exp_time	6250.000000	[s] Scheduled observation exposure time
ascdsver	10.4.2.1	Processing system revision	ontime	6002.6133240461	Sum of GTIs [s]
caldsver	4.6.10a	 	ontime0	6002.4902040958	Sum of GTIs [s]
date	2015-11-04T12:59:44	Date and time of file creation	ontime1	5999.2902736664	Sum of GTIs [s]
revision	1	Processing version of data	ontime2	6002.5722841024	Sum of GTIs [s]
			ontime3	6002.6133240461	Sum of GTIs [s]
			ontime6	6002.6954040527	Sum of GTIs [s]
			ontime7	6002.654364109	Sum of GTIs [s]
			l1events	211092	Number of level 1 events

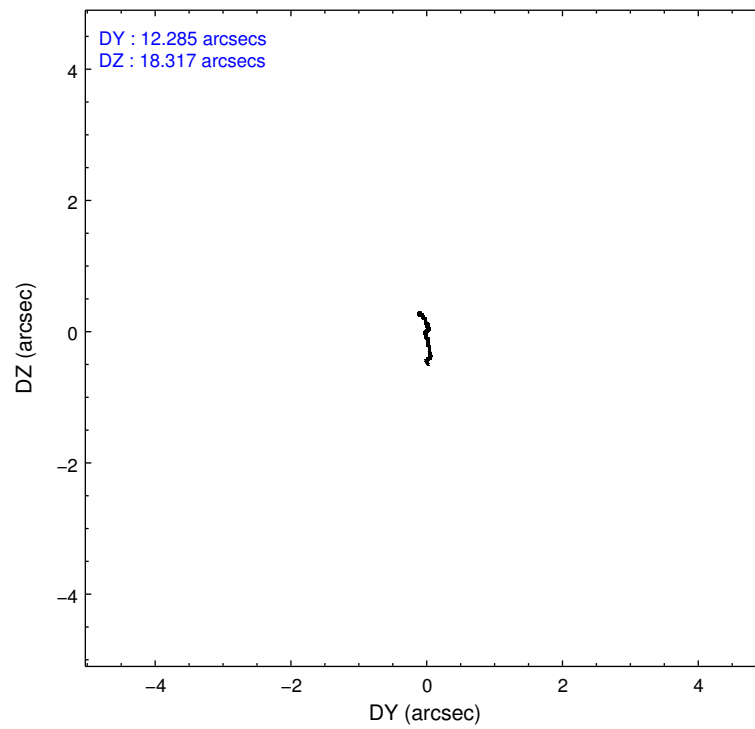
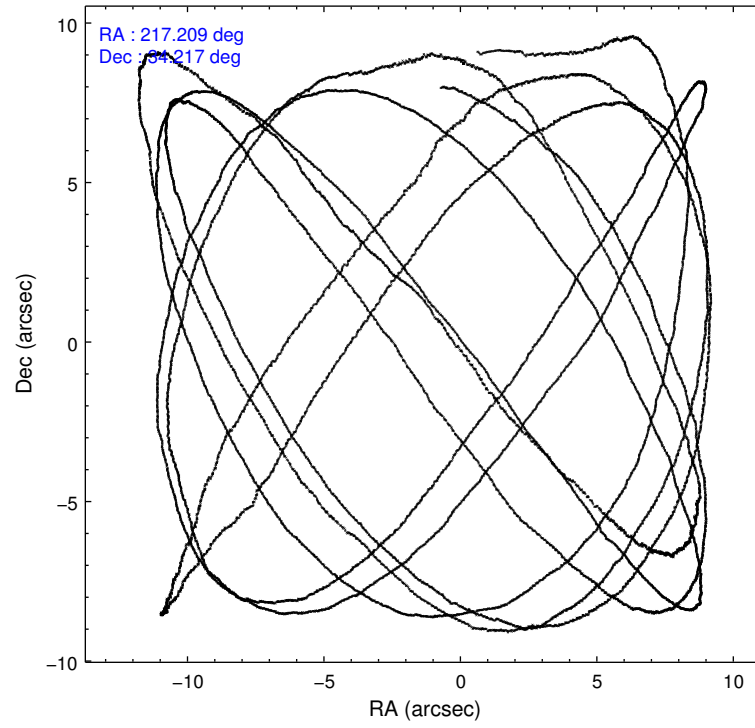
2.1.4 Events

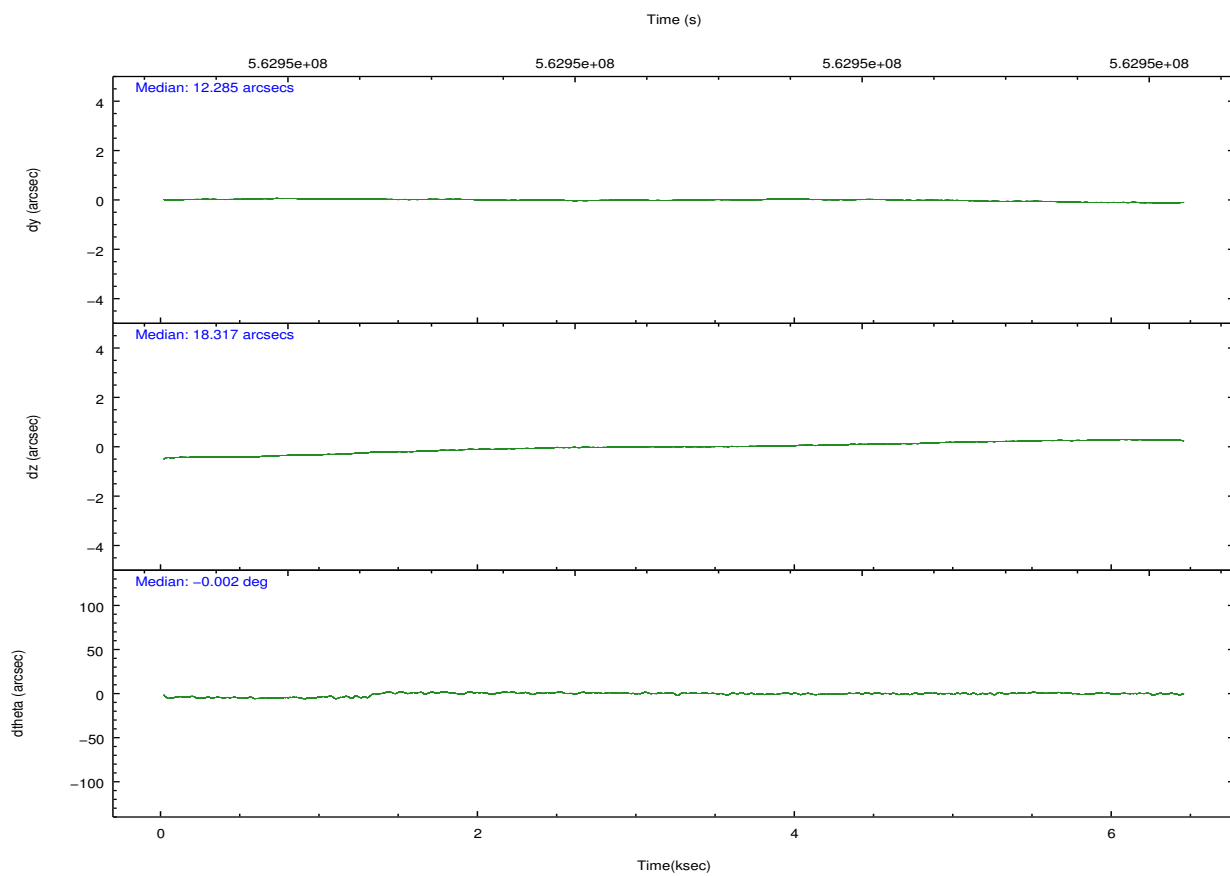
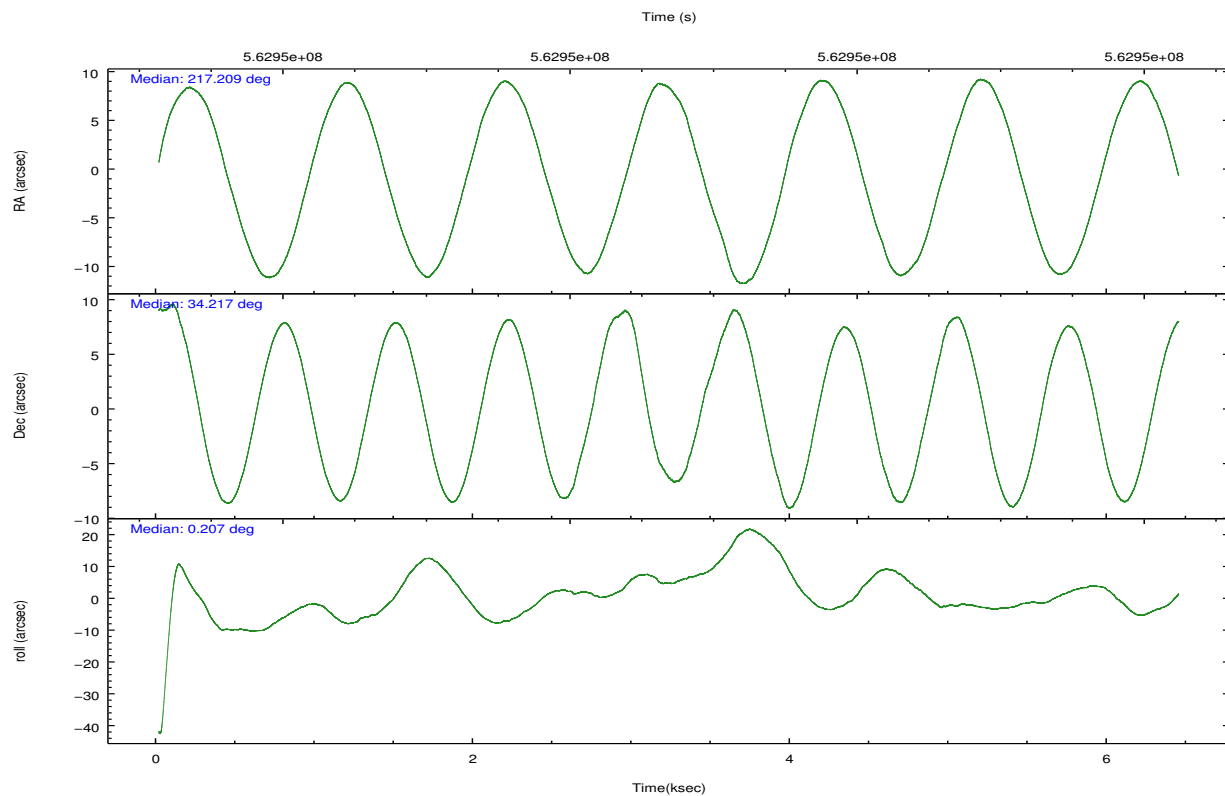
	ccd 0	ccd 1	ccd 2	ccd 3	ccd 6	ccd 7		ccd 0	ccd 1	ccd 2	ccd 3	ccd 6	ccd 7
level 1 events	33138	29282	33341	31166	40506	43659	grade 0 events	2804	1489	1238	1332	5145	1620
rejected events	27967	25059	29774	27425	31022	24836		8%	5%	3%	4%	12%	3%
rejected %	84%	85%	89%	87%	76%	56%	grade 1 events	23	22	21	13	33	66
								0%	0%	0%	0%	0%	0%
							grade 2 events	908	1037	850	828	2686	3849
								2%	3%	2%	2%	6%	8%
							grade 3 events	419	384	361	387	367	1624
								1%	1%	1%	1%	0%	3%
							grade 4 events	334	394	398	383	373	1546
								1%	1%	1%	1%	0%	3%
							grade 5 events	1488	1483	1335	1659	1733	4507
								4%	5%	4%	5%	4%	10%
							grade 6 events	711	924	724	819	923	10197
								2%	3%	2%	2%	2%	23%
							grade 7 events	26451	23549	28414	25745	29246	20250
								79%	80%	85%	82%	72%	46%

2.2 Compared Parameters

Parameter	Planned	Actual	Parameter	Planned	Actual
Instrument	ACIS	ACIS	Obspar format version number	7	7
Detector	ACIS-012367	ACIS-012367	Obspar file type	PREDICTED	ACTUAL
Grating	NONE	NONE	Obspar update status	NONE	UPDATED
Data mode	VFAINT	VFAINT	CCD I0 on	Y	Y
Observation mode	POINTING	POINTING	CCD I1 on	Y	Y
[deg] Pointing RA	217.179752	217.2086714294702	CCD I2 on	Y	Y
[deg] Pointing Dec	34.203556	34.21755918166531	CCD I3 on	Y	Y
[deg] Pointing Roll	0.009739	0.2020316641104806	CCD S0 on	N	N
[mm] SIM focus pos	-0.782348	-0.7809083437167272	CCD S1 on	N	N
[mm] SIM defocus	0	0.001439871863259334	CCD S2 on	O2	Y
[mm] SIM translation stage pos	-233.592463	-233.5874344608287	CCD S3 on	O1	Y
[mm] SIM translation stage offset	0	-0.005018542100998502	CCD S4 on	N	N
[s] Observation start time (MET)	562947663.184000	562947219.31637	CCD S5 on	N	N
Observation start date	2015-11-03T14:19:55	2015-11-03T14:13:39	Number of optional ACIS chips dropped	0	0
[s] Observation end time (MET)	562953913.184000	562954047.35425	On-chip summing requested	N	N
Observation end date	2015-11-03T16:04:05	2015-11-03T16:07:27	Subarray requested	NONE	NONE
Read mode	TIMED	TIMED	Alternating exposures requested	N	N
			[s] Primary exposure time	0.000000	3.2

2.3 Aspect



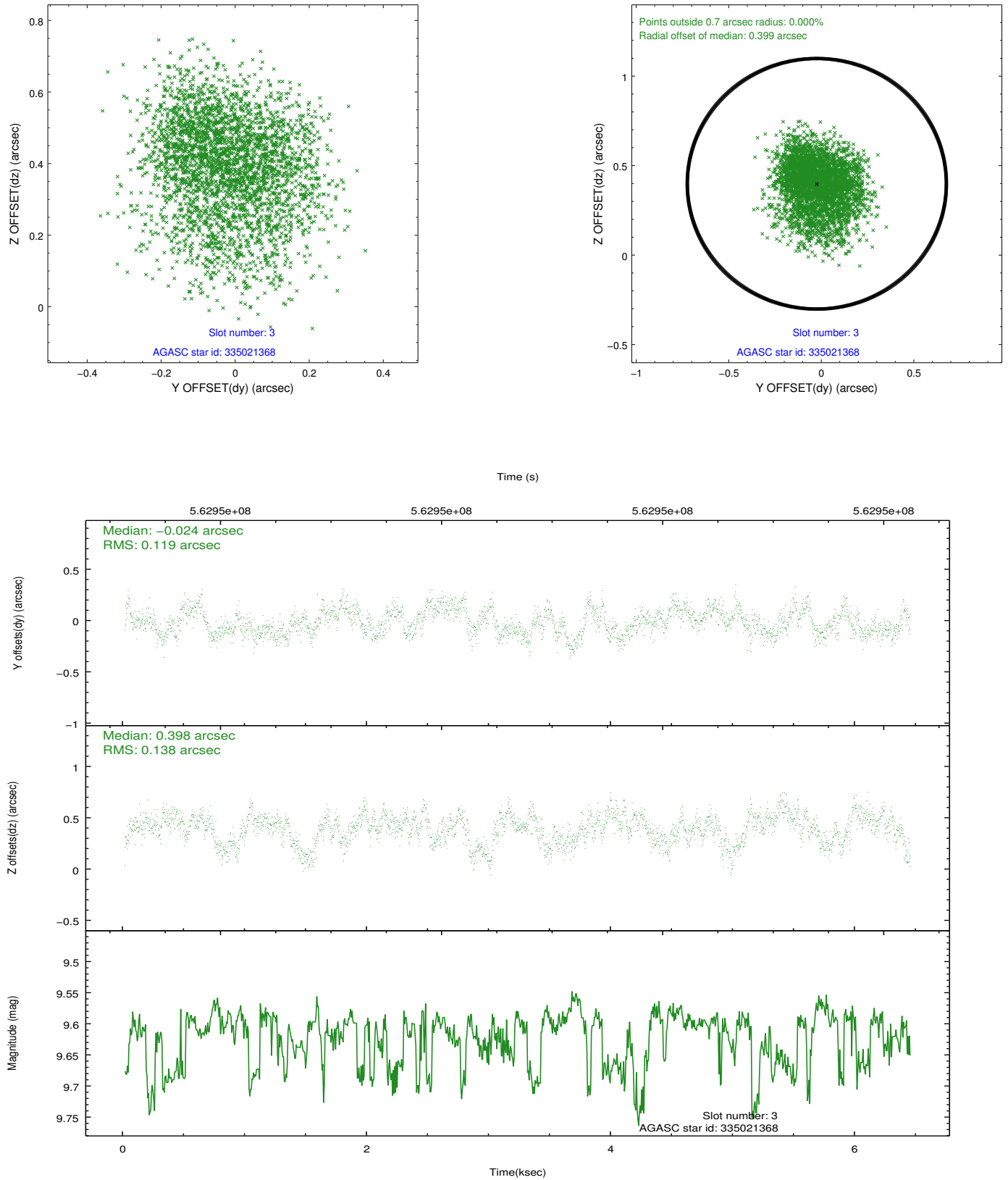


Slot Statistics

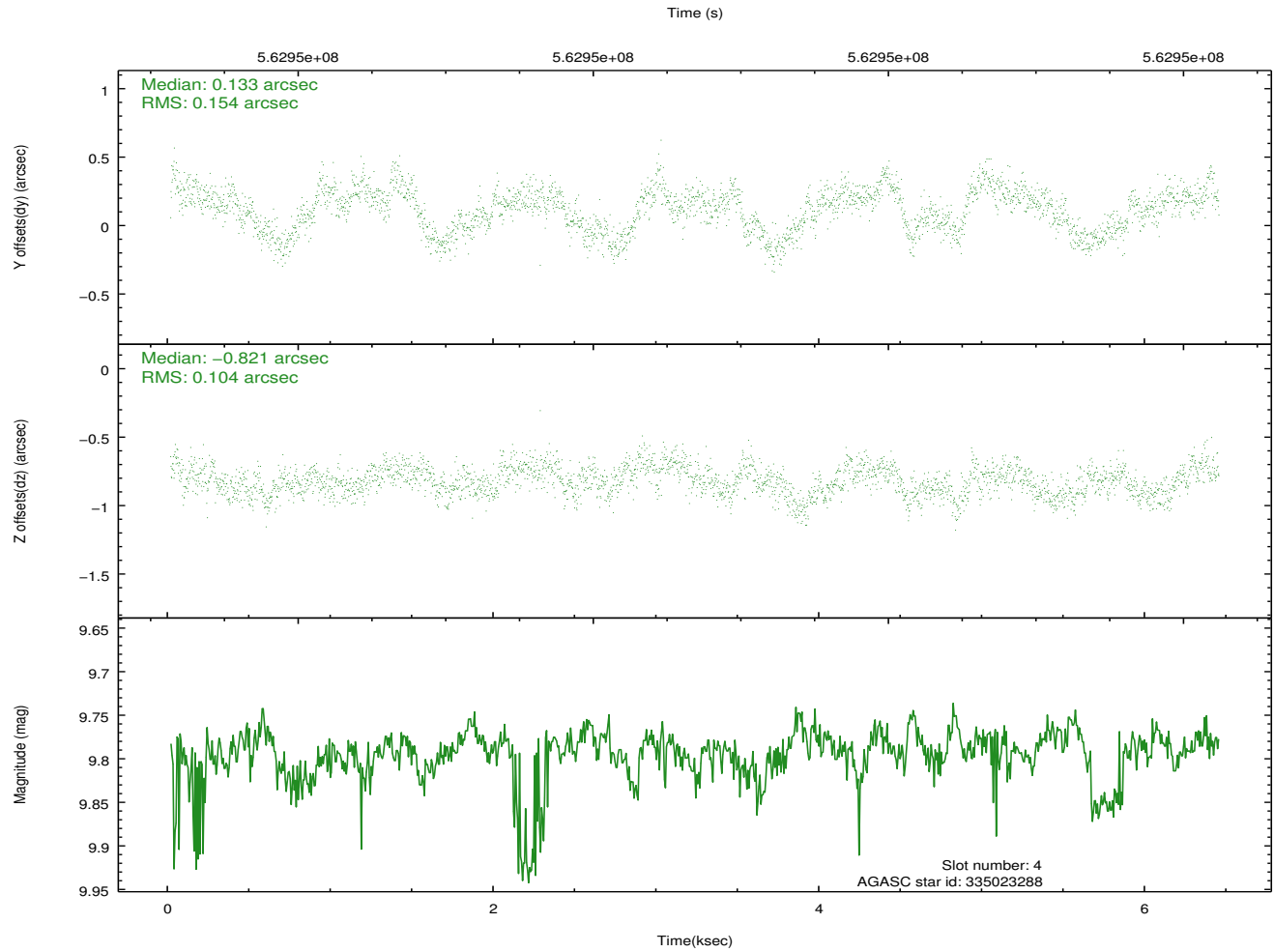
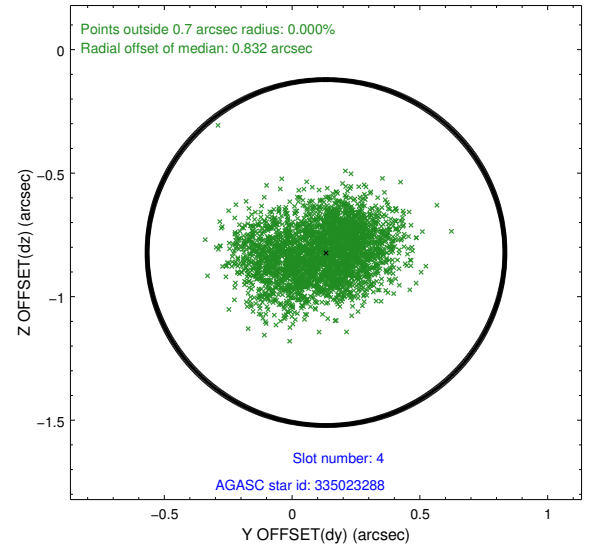
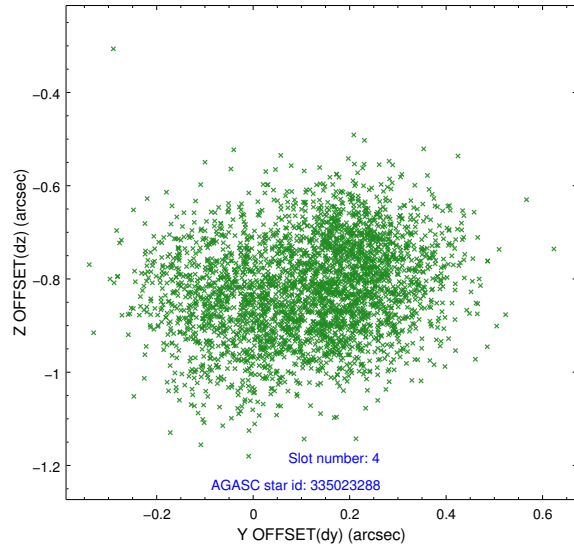
slot	status	used	id	mag	n_pts	med_dy	med_dz	dr1	dr2	ra	dec	mean_y	mean_z
0	FID		ACIS-I-2	7.14	1570	-0.179	-0.066	0.014	0.055	0.000000	0.000000	-767.10	-848.42
1	FID		ACIS-I-4	7.20	1570	0.407	0.115	0.010	0.029	0.000000	0.000000	2147.13	1057.49
2	FID		ACIS-I-5	7.25	1570	-0.327	0.021	0.013	0.030	0.000000	0.000000	-1819.90	1056.27
3	GUIDE	used	335021368	9.62	3140	-0.024	0.398	0.196	0.310	217.529643	33.934817	1044.50	-965.42
4	GUIDE	used	335023288	9.79	3138	0.133	-0.821	0.199	0.320	217.791365	34.425735	1816.54	803.86
5	GUIDE	used	335025848	9.68	3137	0.358	0.593	0.189	0.309	217.530531	33.778292	1049.90	-1528.45
6	GUIDE	used	335028696	9.20	3138	-0.428	0.244	0.131	0.218	217.260519	33.844112	240.77	-1294.07
7	GUIDE	used	335030384	8.82	3138	-0.036	-0.391	0.108	0.170	216.806407	34.722197	-1104.51	1868.79

2.4 Star Slots

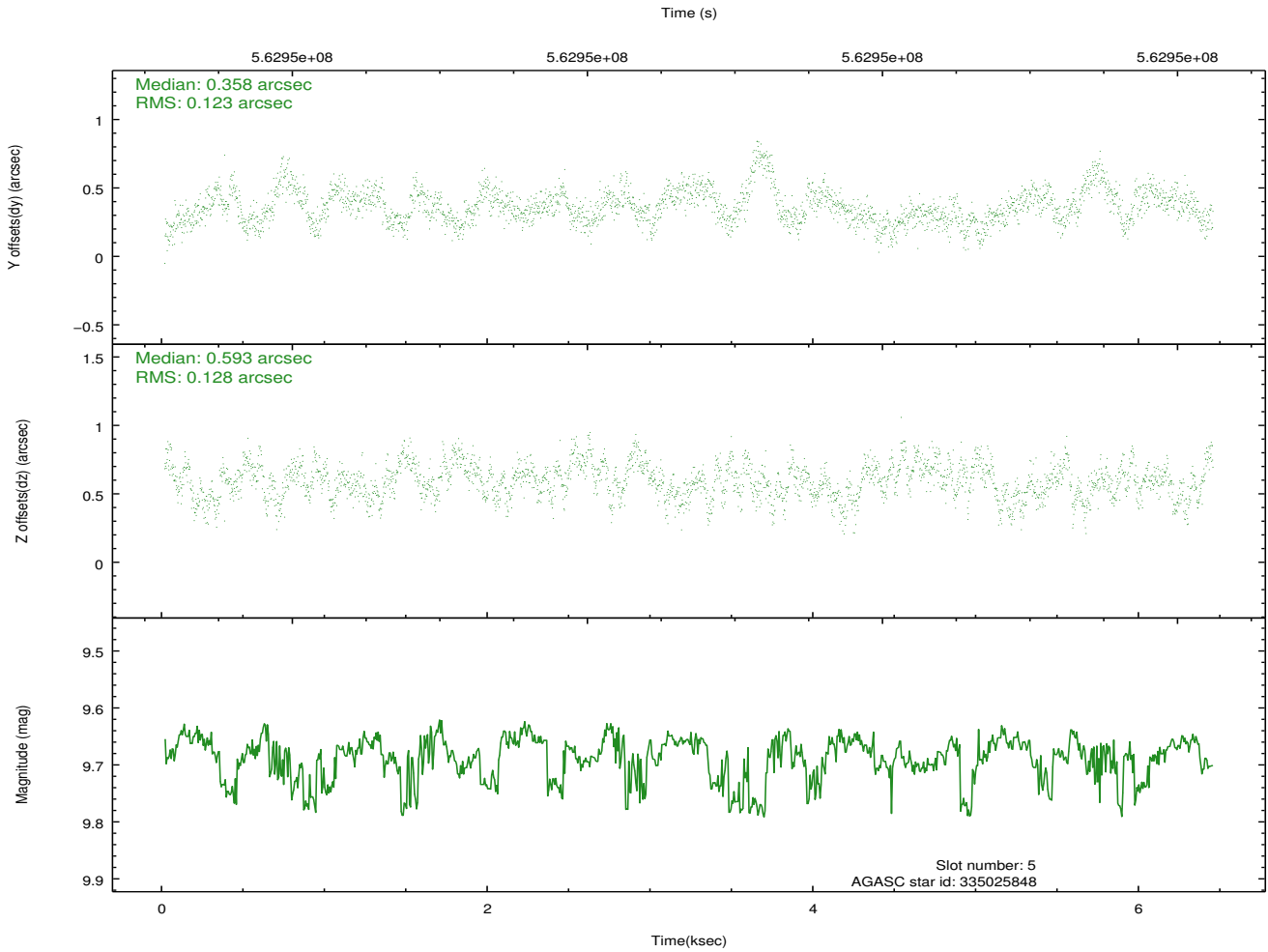
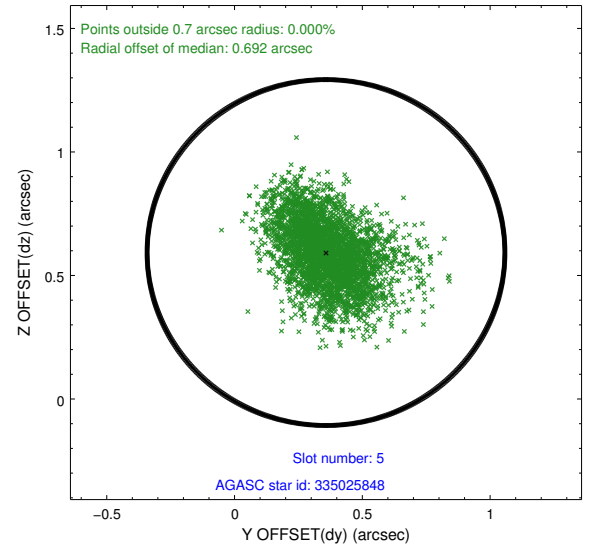
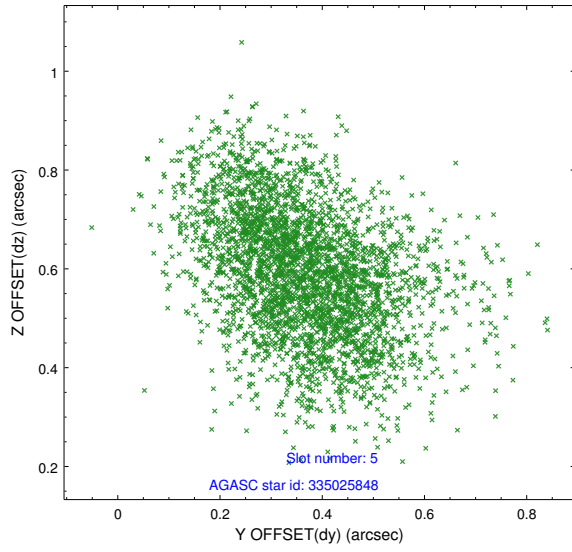
2.4.1 Slot 3



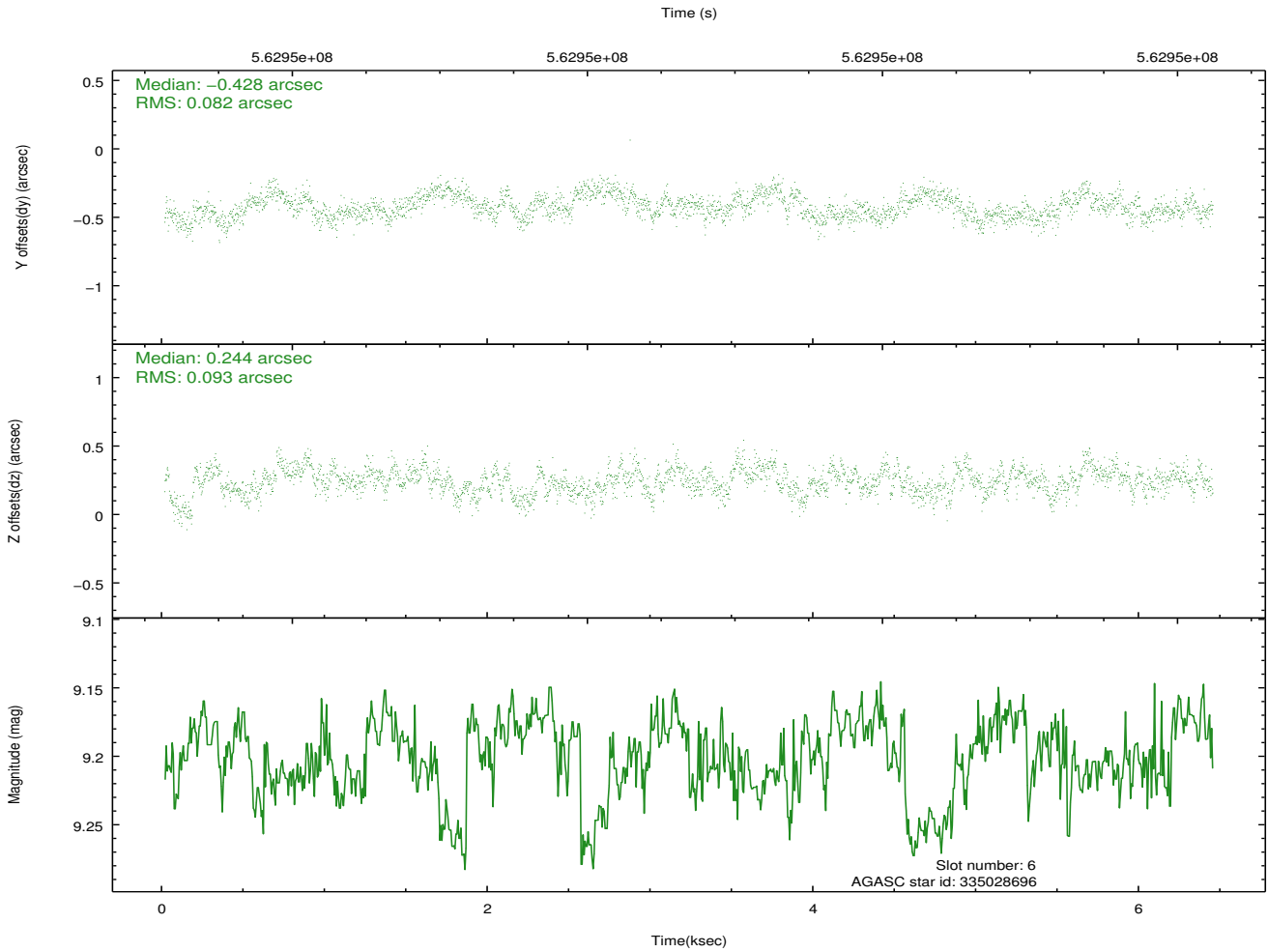
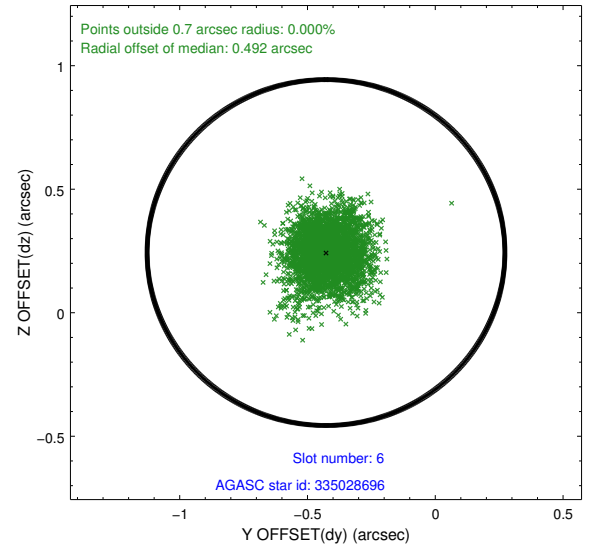
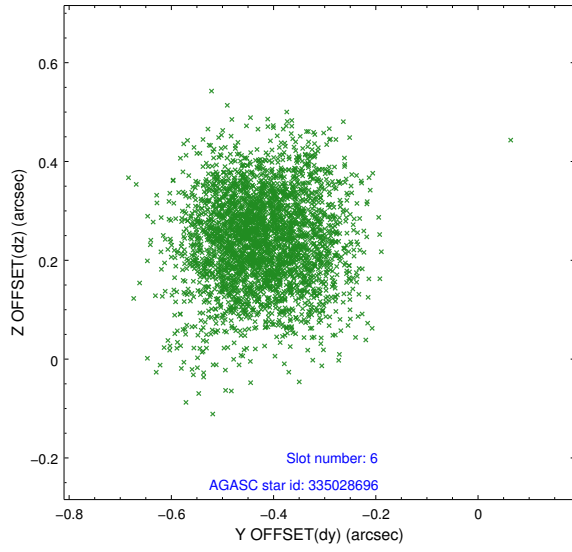
2.4.2 Slot 4



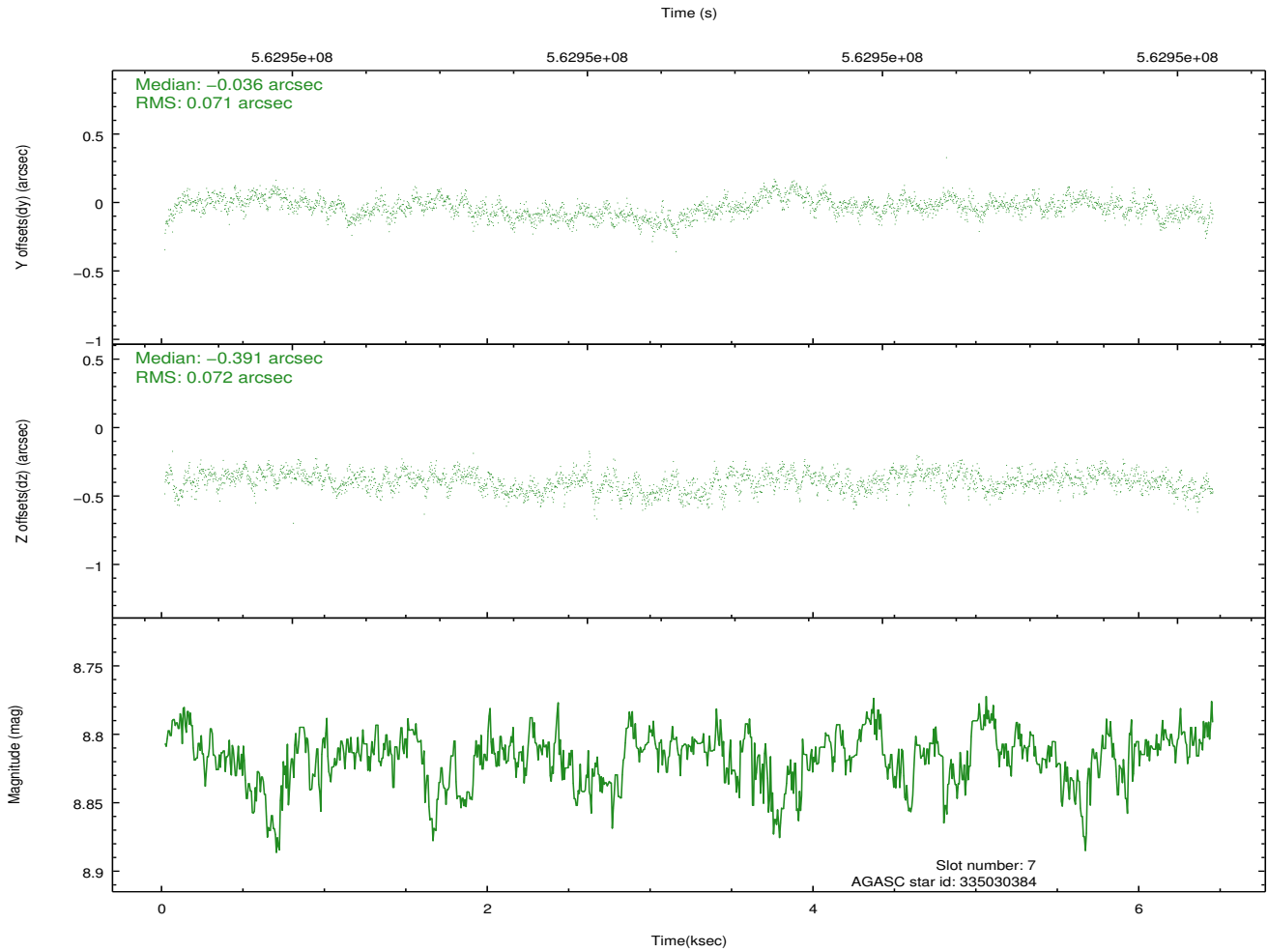
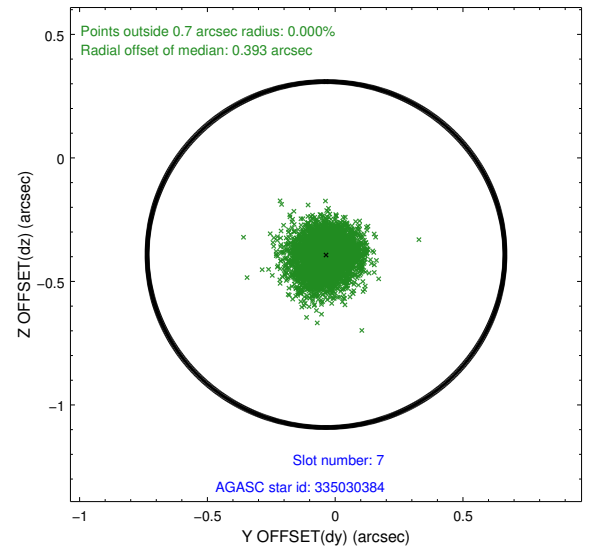
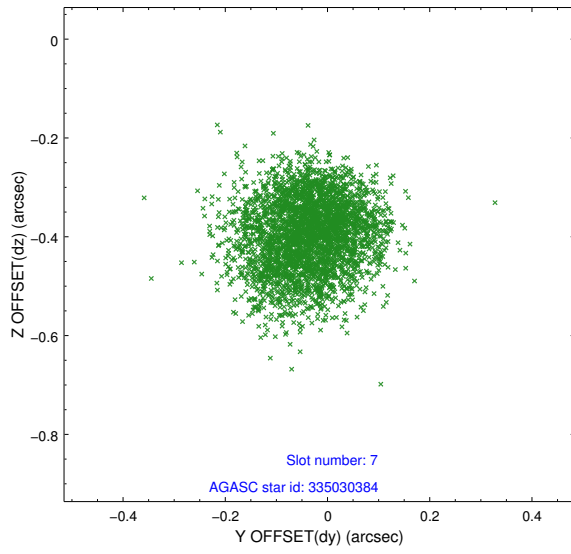
2.4.3 Slot 5



2.4.4 Slot 6

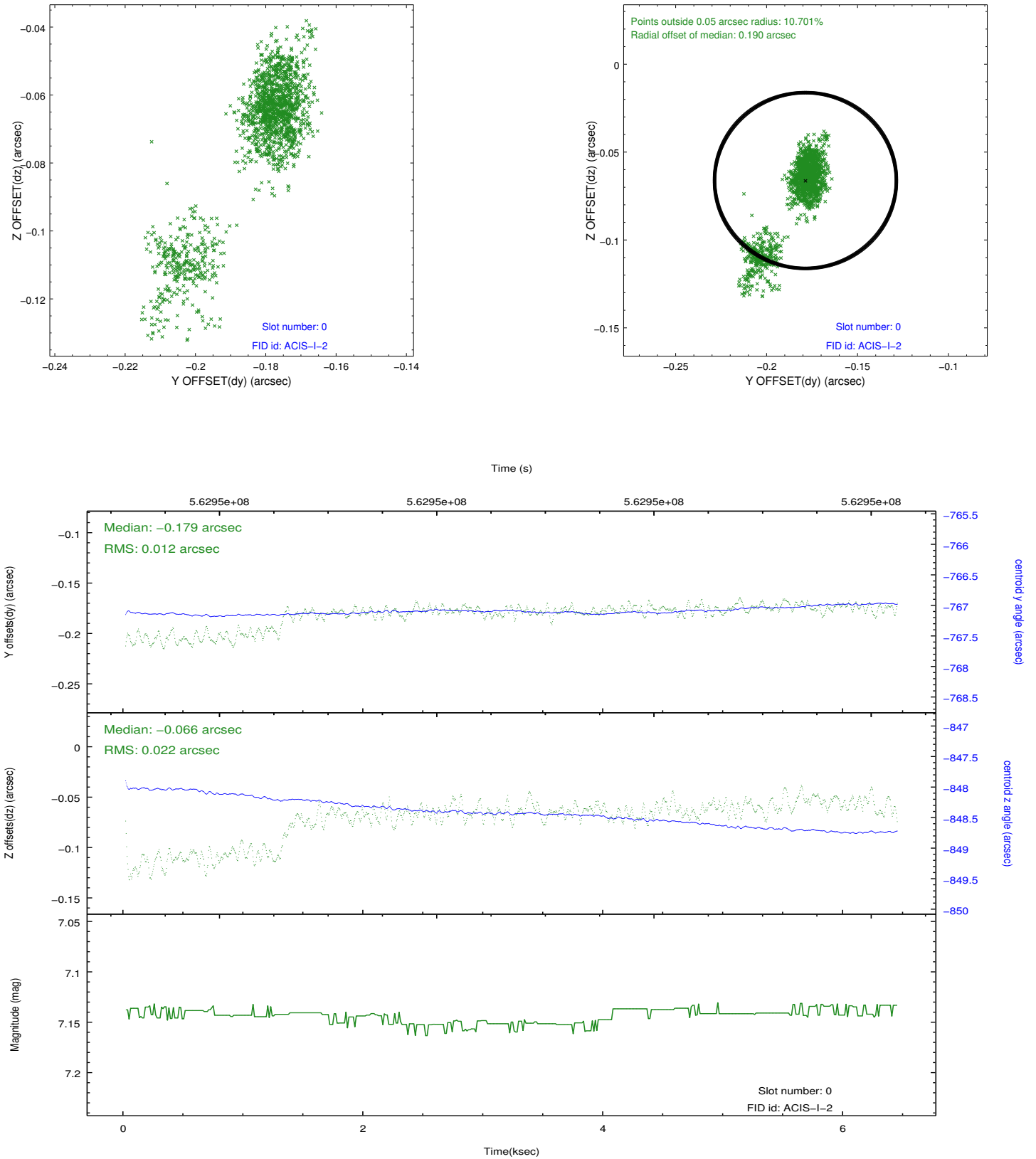


2.4.5 Slot 7

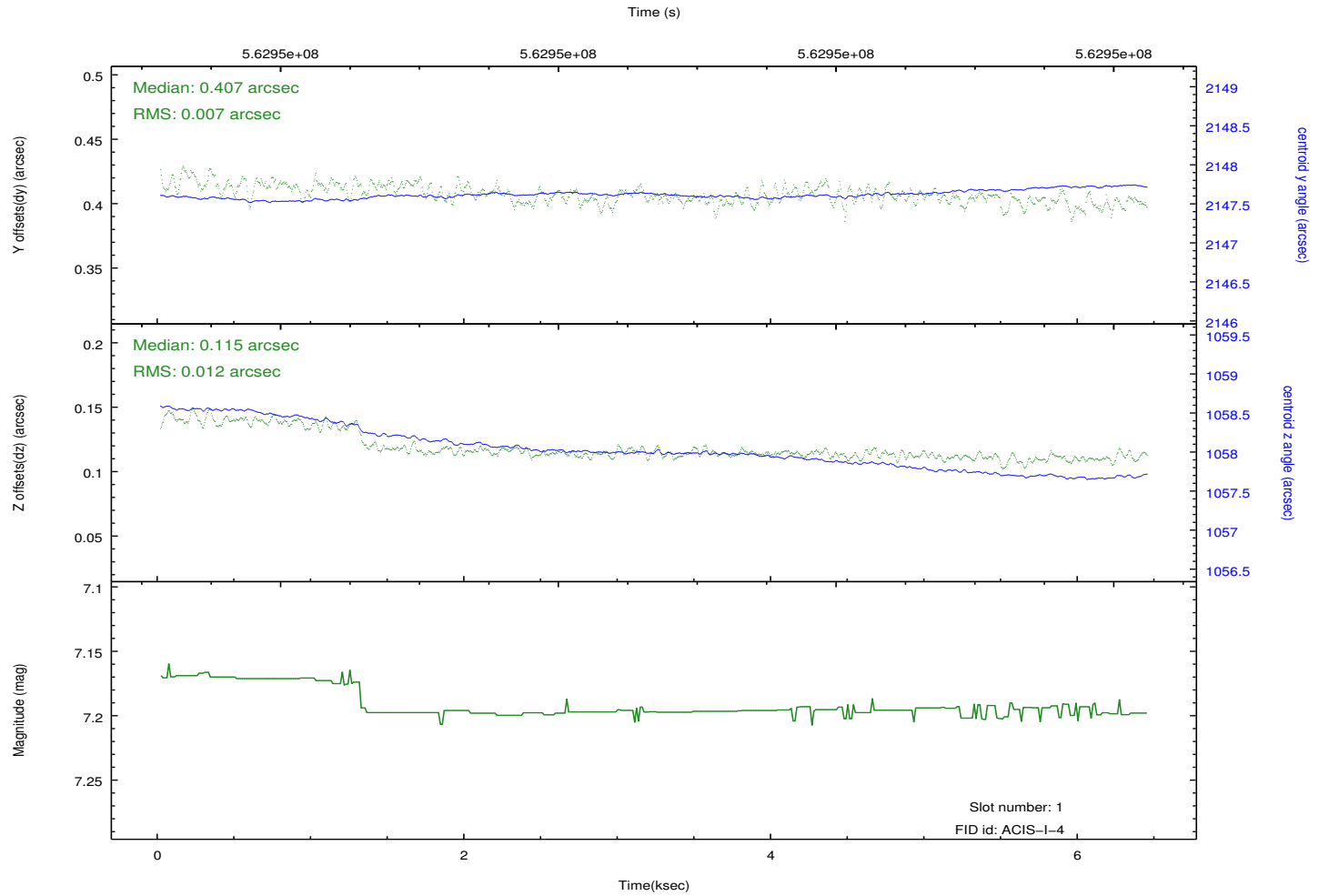
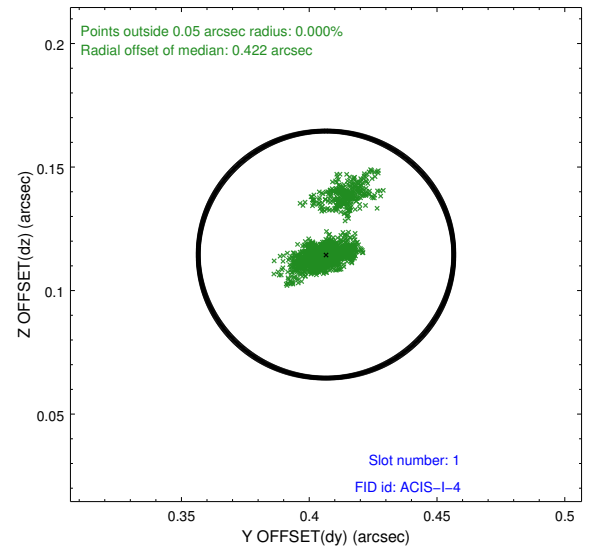
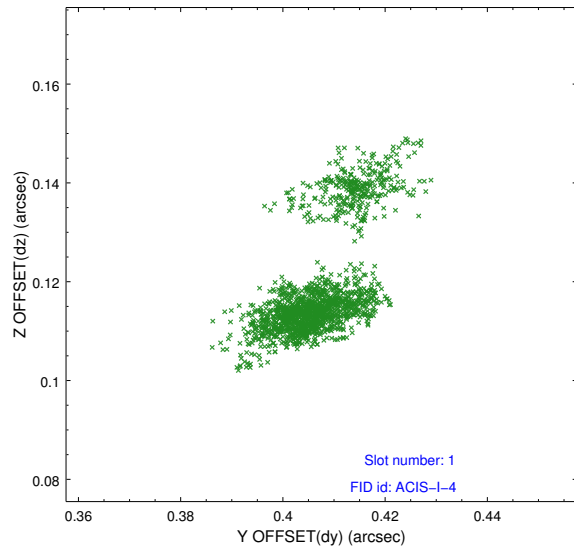


2.5 FID Slots

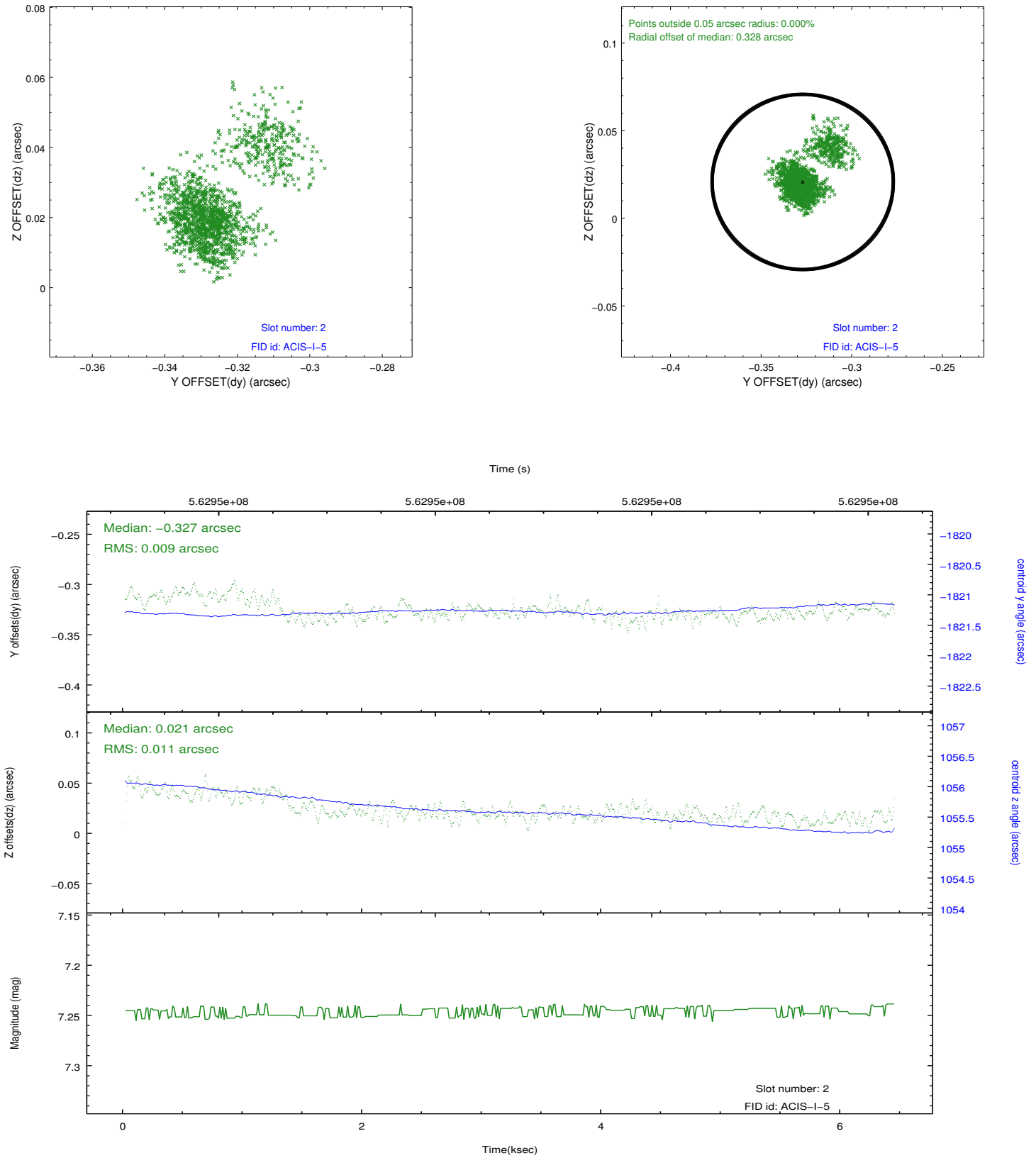
2.5.1 Slot 0



2.5.2 Slot 1



2.5.3 Slot 2



A Summary

A.1 Status

V&V Scientist	Jen Lauer
V&V Date (YYYY-MM-DD)	2015.11.04
V&V Edition	1
V&V Disposition and Status	OK
V&V Charge Time	6.0026133240461

A.2 Comments

Roll preference met.