

V&V Reference Report

L2 ASCDS Version : 10.3.3

Observation 17176 - L2 Version 1
Chandra X-Ray Center

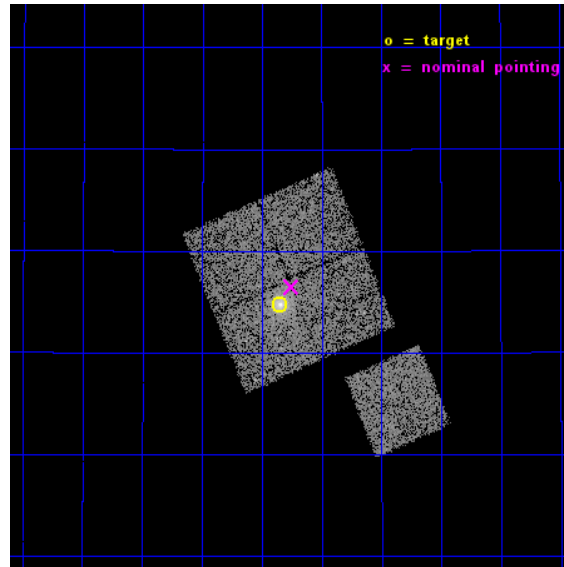
L2 Processing Date : Mar 2 2015

Contents

1	Front	2
2	OBI	3
2.1	OBI	3
2.1.1	Images	3
2.1.2	Bias	3
2.1.3	Parameters	4
2.1.4	Events	4
2.2	Compared Parameters	5
2.3	Aspect	6
2.4	Star Slots	9
2.4.1	Slot 3	9
2.4.2	Slot 4	10
2.4.3	Slot 5	11
2.4.4	Slot 6	12
2.4.5	Slot 7	13
2.5	FID Slots	14
2.5.1	Slot 0	14
2.5.2	Slot 1	15
2.5.3	Slot 2	16
A	Summary	17
A.1	Status	17
A.2	Comments	17

1 Front

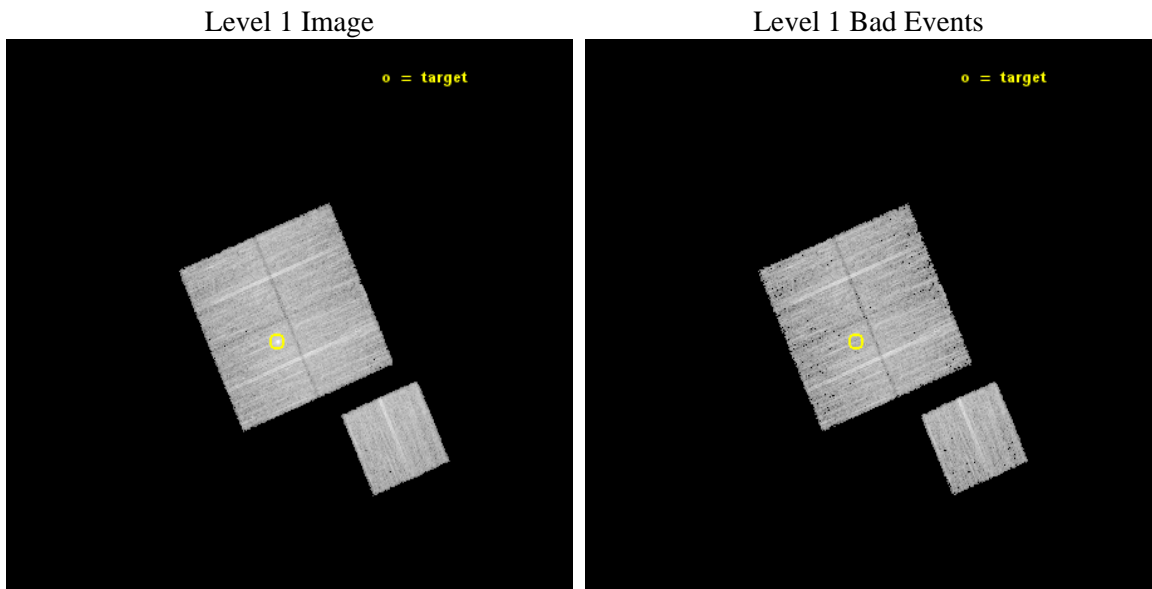
seq_num	801459	Sequence number
obs_id	17176	Observation id
title	UNMASKING GALAXY CLUSTERS MASQUERADING AS QUASARS	Proposal title
observer	Dr Megan Donahue	Principal investigator
object	J113121.4+333447	Source name
dtcycle	0	
cycle	P	events from which exps? Prim/Second/Both
ra_targ	172.837083	Observer's specified target RA [deg]
dec_targ	33.57975	Observer's specified target Dec [deg]
ra_nom	172.81327605924	Nominal RA [deg]
dec_nom	33.608254720021	Nominal Dec [deg]
roll_nom	156.93839253879	Nominal Roll [deg]
revision	1	Processing version of data
ontime	14082.274001598	Sum of GTIs [s]
livetime	13898.278724548	Livetime [s]
ontime0	14082.150881648	Sum of GTIs [s]
ontime1	14082.191921592	Sum of GTIs [s]
ontime2	14082.232961655	Sum of GTIs [s]
ontime3	14082.274001598	Sum of GTIs [s]
ontime6	14082.109841585	Sum of GTIs [s]
l2events	35050	Number of level 2 events



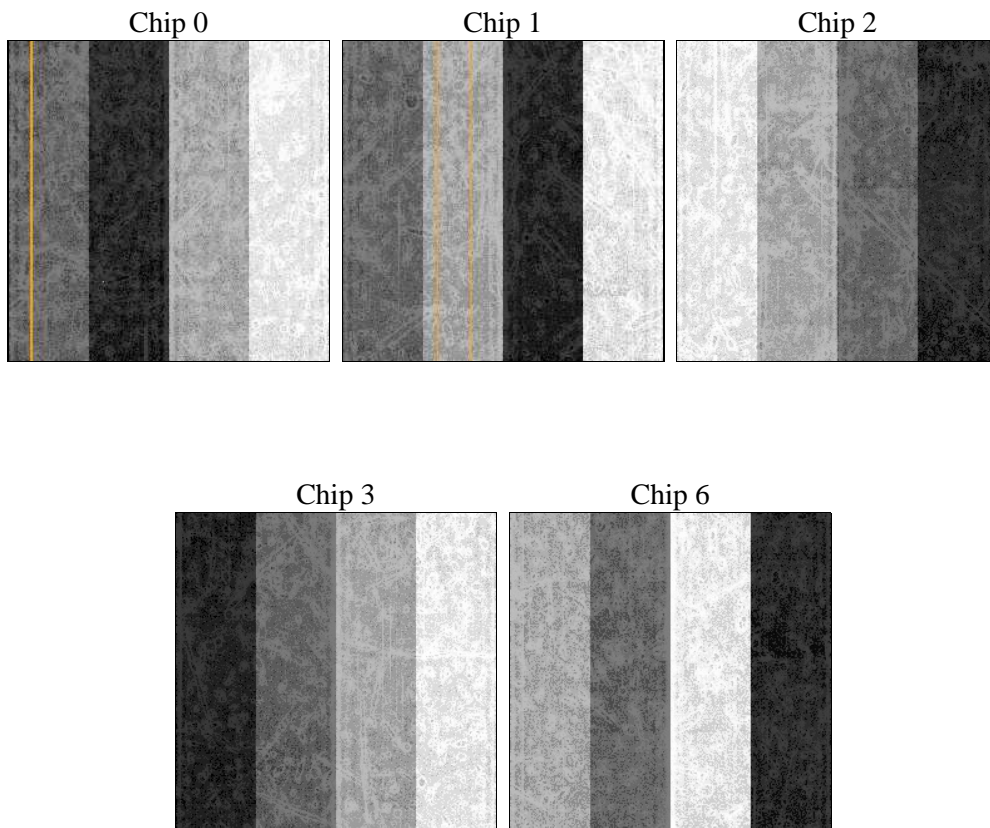
2 OBI

2.1 OBI

2.1.1 Images



2.1.2 Bias



2.1.3 Parameters

obi_num	1	Obi number	sched_exp_time	14000.000000	[s] Scheduled observation exposure time
ascdsver	10.3.3	Processing system revision	ontime	14082.274001598	Sum of GTIs [s]
caldbver	4.6.7	 	ontime0	14082.150881648	Sum of GTIs [s]
date	2015-03-02T05:36:36	Date and time of file creation	ontime1	14082.191921592	Sum of GTIs [s]
revision	1	Processing version of data	ontime2	14082.232961655	Sum of GTIs [s]
			ontime3	14082.274001598	Sum of GTIs [s]
			ontime6	14082.109841585	Sum of GTIs [s]
			l1events	309107	Number of level 1 events

2.1.4 Events

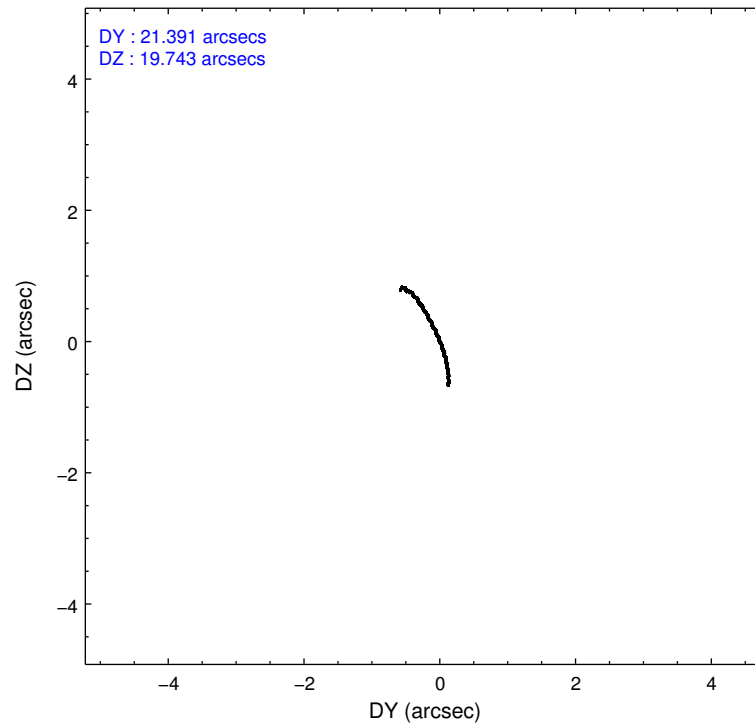
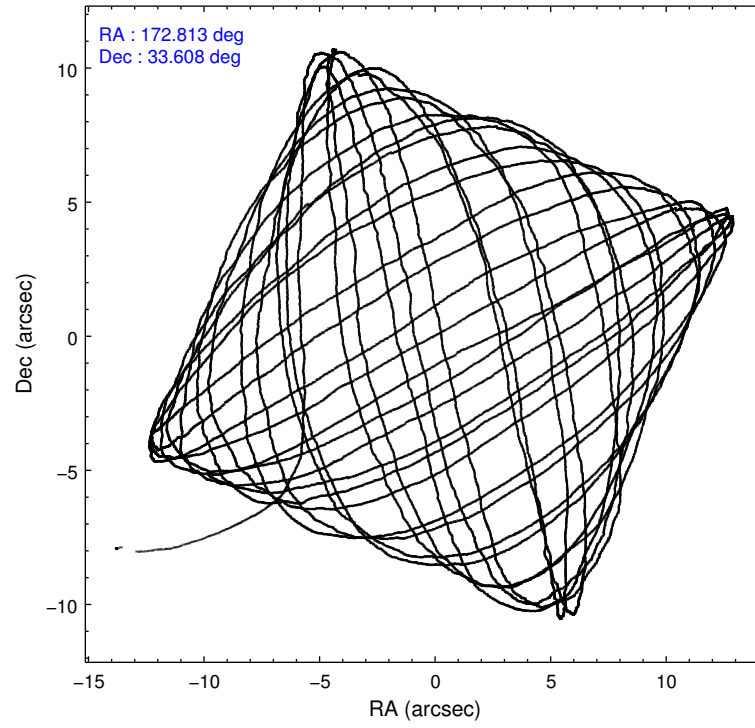
	ccd 0	ccd 1	ccd 2	ccd 3	ccd 6
level 1 events	57265	58901	64803	65197	62941
rejected events	49890	51358	57214	54198	55219
rejected %	87%	87%	88%	83%	87%

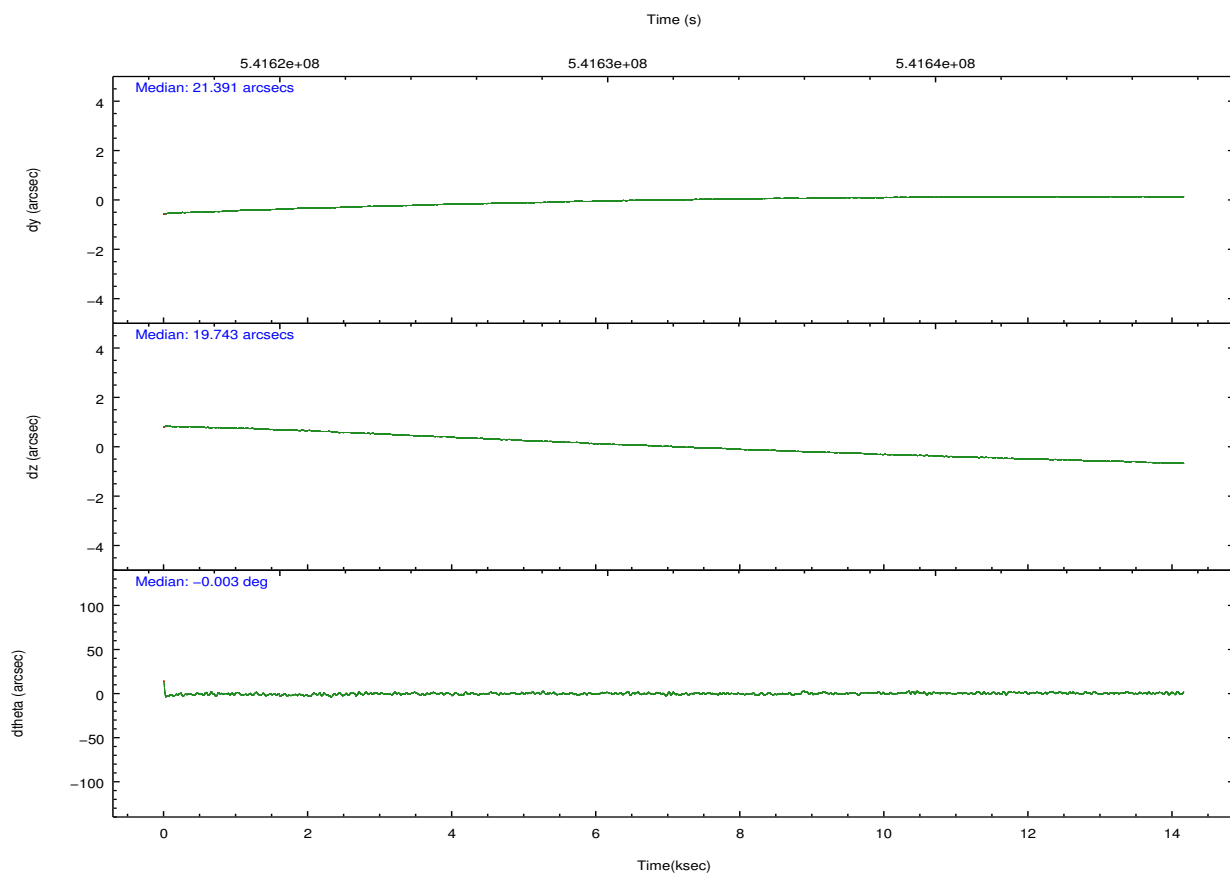
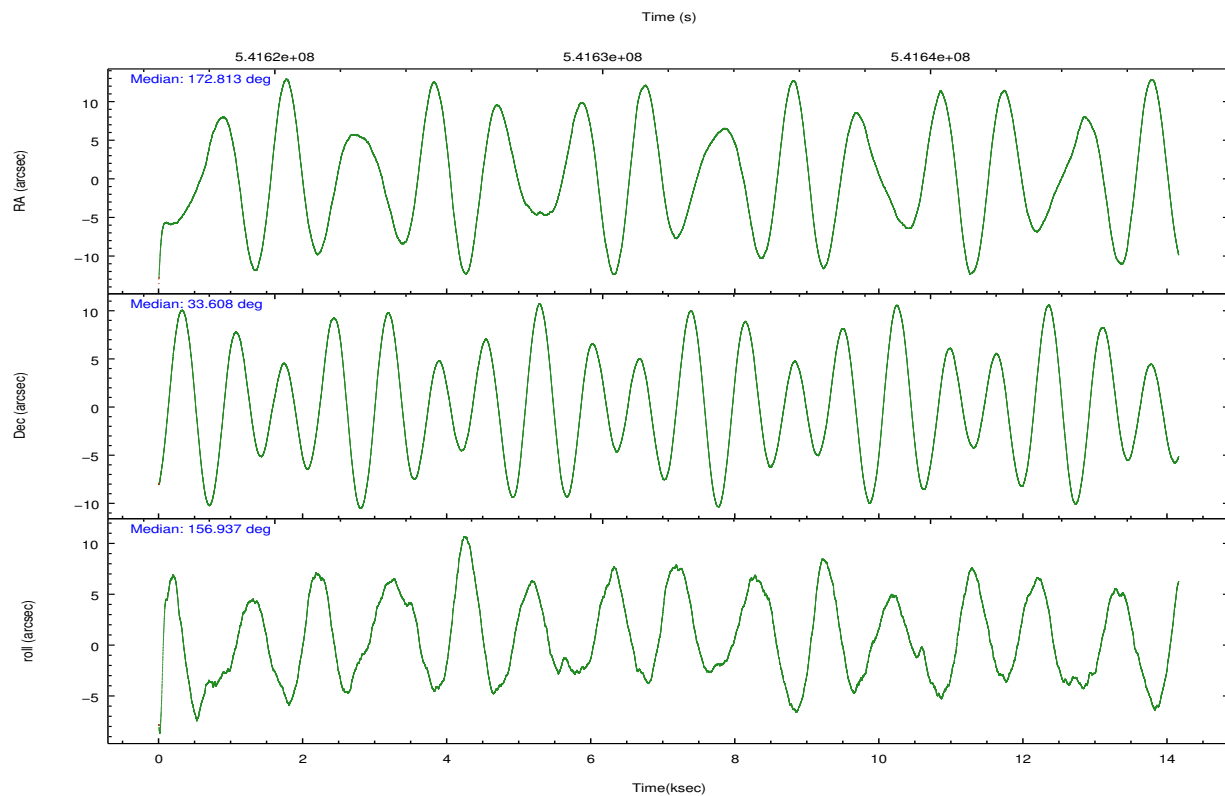
	ccd 0	ccd 1	ccd 2	ccd 3	ccd 6
grade 0 events	2542	2531	2846	5761	2832
	4%	4%	4%	8%	4%
grade 1 events	44	18	34	39	44
	0%	0%	0%	0%	0%
grade 2 events	1865	1774	1890	1998	1732
	3%	3%	2%	3%	2%
grade 3 events	761	753	711	872	780
	1%	1%	1%	1%	1%
grade 4 events	731	843	772	891	784
	1%	1%	1%	1%	1%
grade 5 events	2451	2671	2449	2885	2756
	4%	4%	3%	4%	4%
grade 6 events	1479	1644	1376	1480	1596
	2%	2%	2%	2%	2%
grade 7 events	47392	48667	54725	51271	52417
	82%	82%	84%	78%	83%

2.2 Compared Parameters

Parameter	Planned	Actual	Parameter	Planned	Actual
Instrument	ACIS	ACIS	Obspar format version number	7	7
Detector	ACIS-01236	ACIS-01236	Obspar file type	PREDICTED	ACTUAL
Grating	NONE	NONE	Obspar update status	NONE	UPDATED
Data mode	VFAINT	VFAINT	CCD I0 on	Y	Y
Observation mode	POINTING	POINTING	CCD I1 on	Y	Y
[deg] Pointing RA	172.846182	172.8132760592387	CCD I2 on	Y	Y
[deg] Pointing Dec	33.611685	33.60825472002092	CCD I3 on	Y	Y
[deg] Pointing Roll	156.711515	156.938392538786	CCD S0 on	N	N
[mm] SIM focus pos	-0.782348	-0.7809083437167272	CCD S1 on	N	N
[mm] SIM defocus	0	0.001439871863259334	CCD S2 on	O1	Y
[mm] SIM translation stage pos	-233.592463	-233.5874344608287	CCD S3 on	N	N
[mm] SIM translation stage offset	0	-0.005018542100998502	CCD S4 on	N	N
[s] Observation start time (MET)	541624099.184000	541622939.49049	CCD S5 on	N	N
Observation start date	2015-03-01T19:07:12	2015-03-01T18:48:59	Number of optional ACIS chips dropped	0	0
[s] Observation end time (MET)	541638099.184000	541638490.79136	On-chip summing requested	N	N
Observation end date	2015-03-01T23:00:32	2015-03-01T23:08:10	Subarray requested	NONE	NONE
Read mode	TIMED	TIMED	Alternating exposures requested	N	N
			[s] Primary exposure time	0.000000	3.1

2.3 Aspect



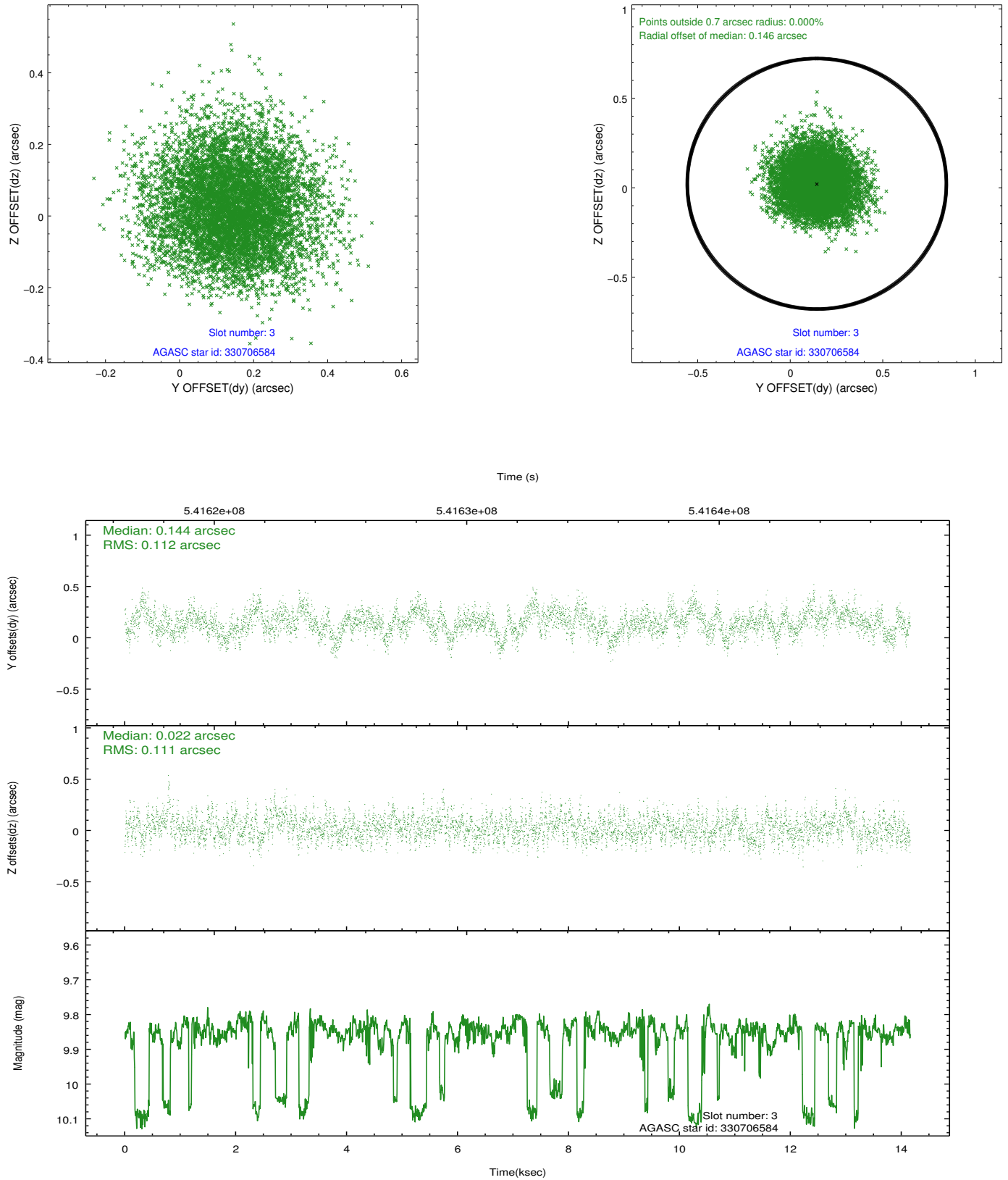


Slot Statistics

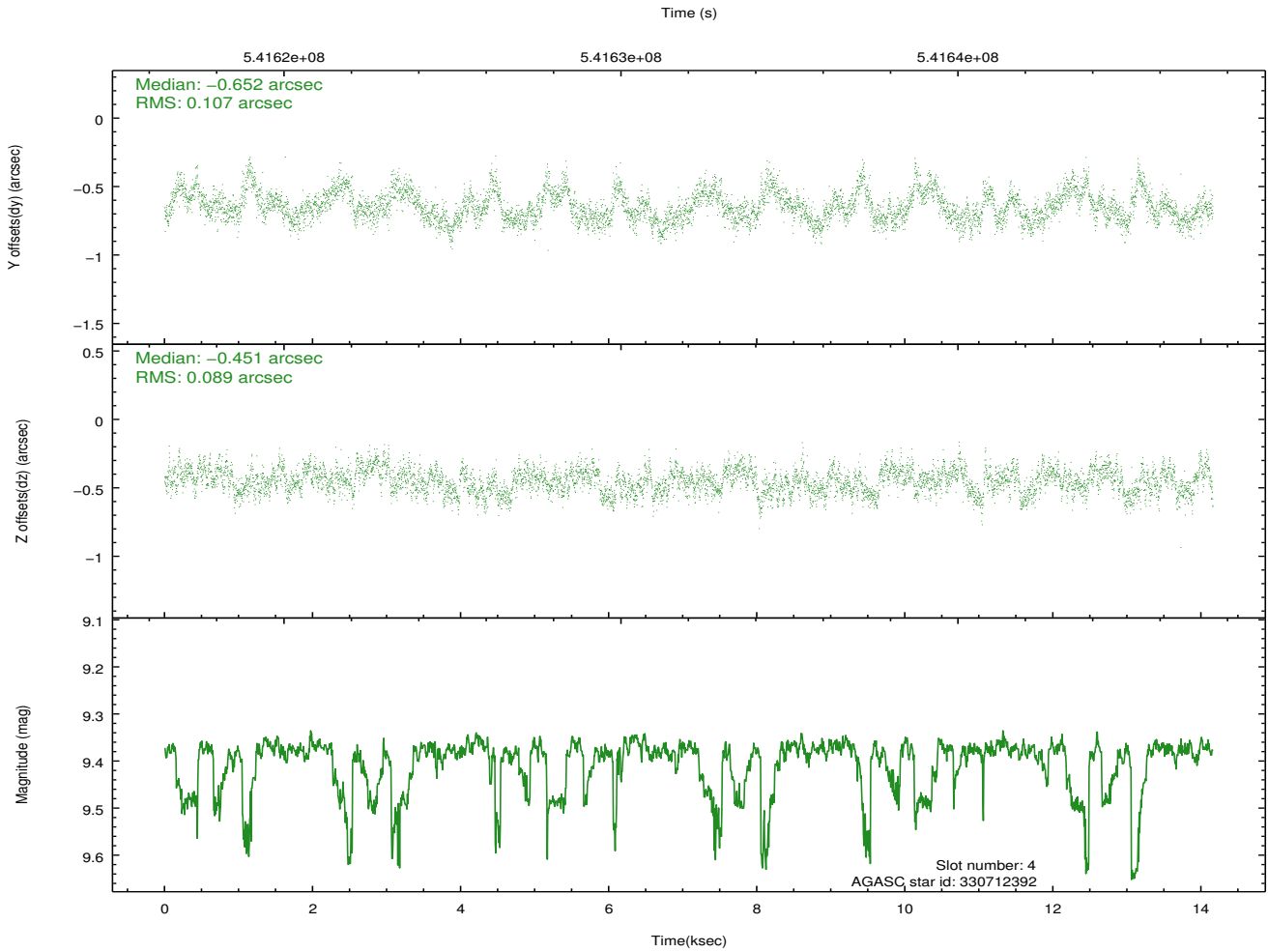
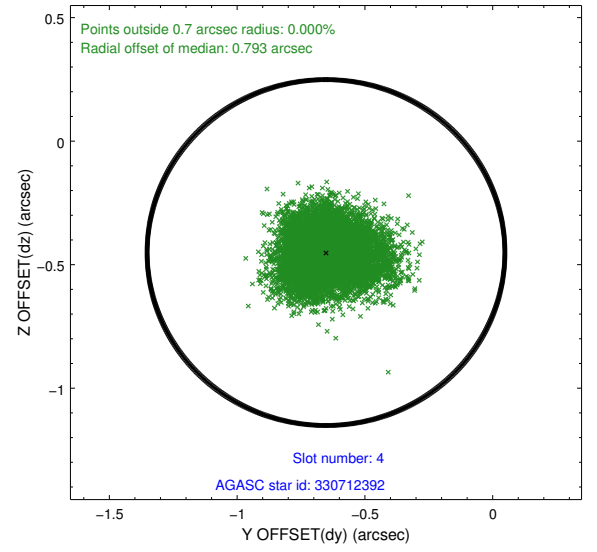
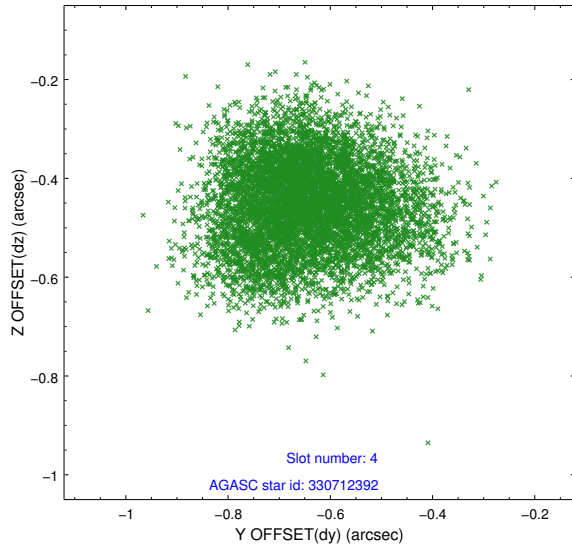
slot	status	used	id	mag	n_pts	med_dy	med_dz	dr1	dr2	ra	dec	mean_y	mean_z
0	FID		ACIS-I-1	7.08	3453	-0.080	0.027	0.027	0.057	0.000000	0.000000	917.90	-843.47
1	FID		ACIS-I-2	6.98	3454	-0.198	-0.120	0.018	0.033	0.000000	0.000000	-776.13	-850.24
2	FID		ACIS-I-4	7.01	3454	0.179	0.161	0.014	0.026	0.000000	0.000000	2137.86	1056.32
3	GUIDE	used	330706584	9.85	6890	0.144	0.022	0.169	0.271	173.123453	33.560691	-835.66	-161.01
4	GUIDE	used	330712392	9.39	6899	-0.652	-0.451	0.149	0.237	171.982874	33.415195	2106.98	1665.30
5	GUIDE	used	330959648	6.94	6906	0.157	-0.049	0.100	0.158	173.258632	34.051452	-502.22	-1942.13
6	GUIDE	used	330964528	9.08	6904	0.104	0.425	0.150	0.226	173.743421	33.801939	-2189.63	-1700.72
7	GUIDE	used	330966112	9.13	6903	0.242	0.058	0.131	0.205	173.675067	33.827083	-1966.74	-1701.38

2.4 Star Slots

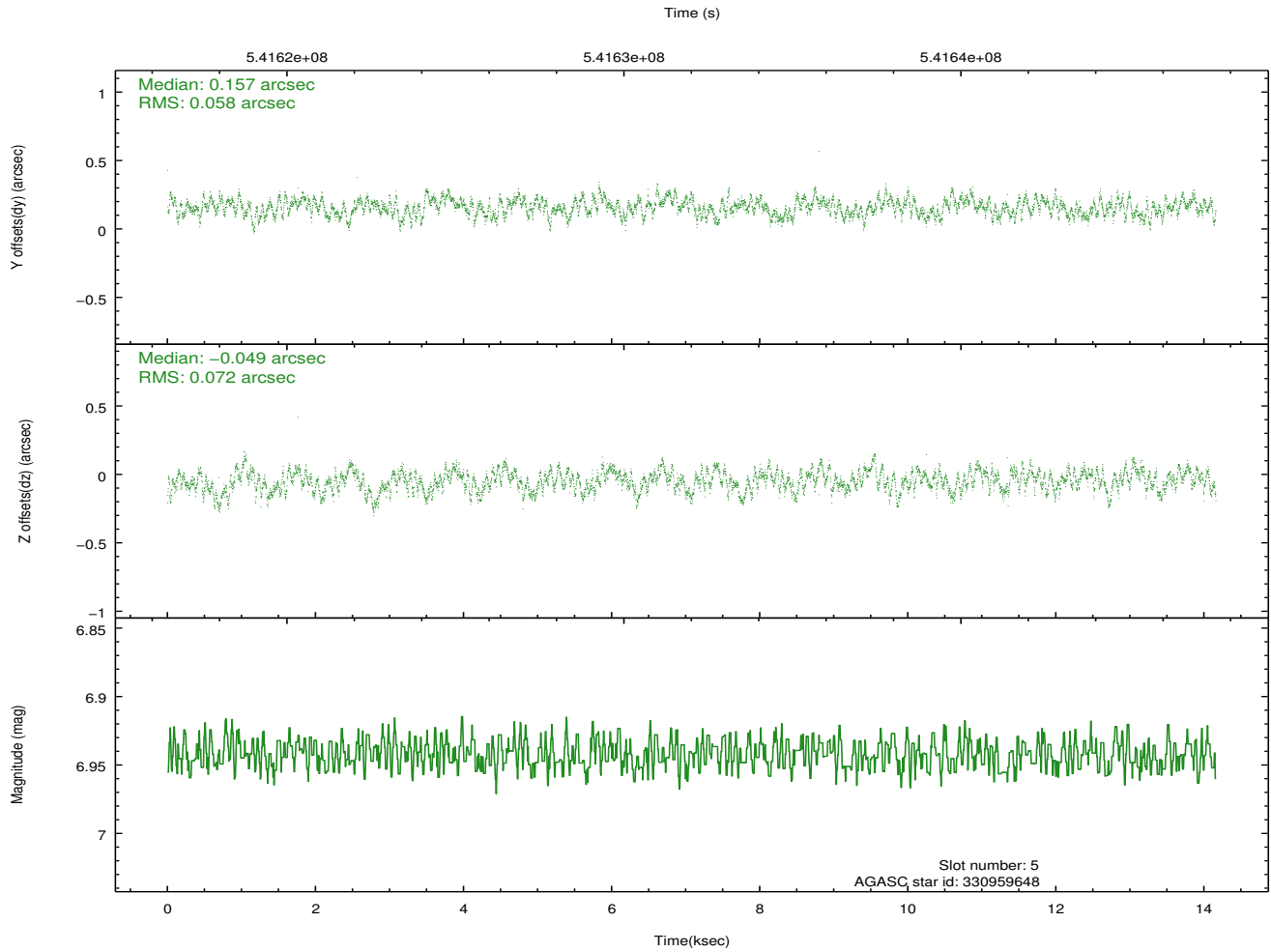
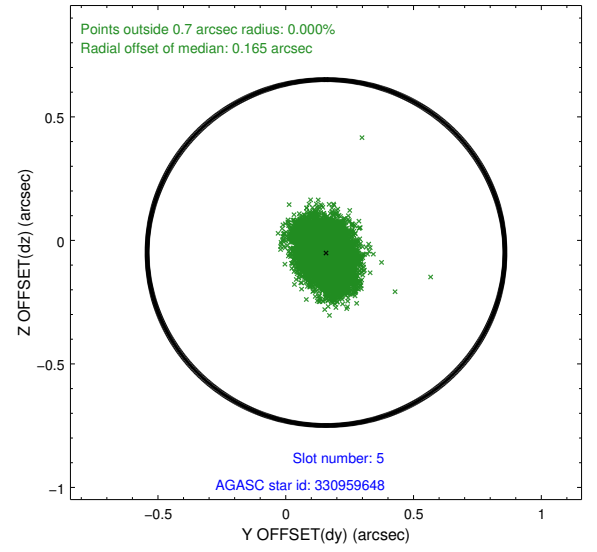
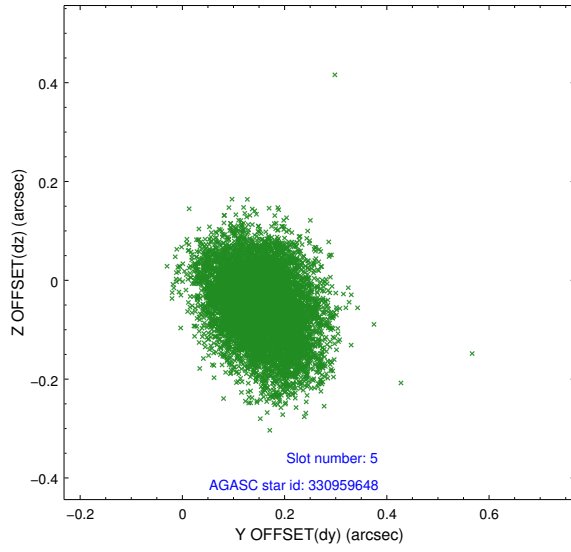
2.4.1 Slot 3



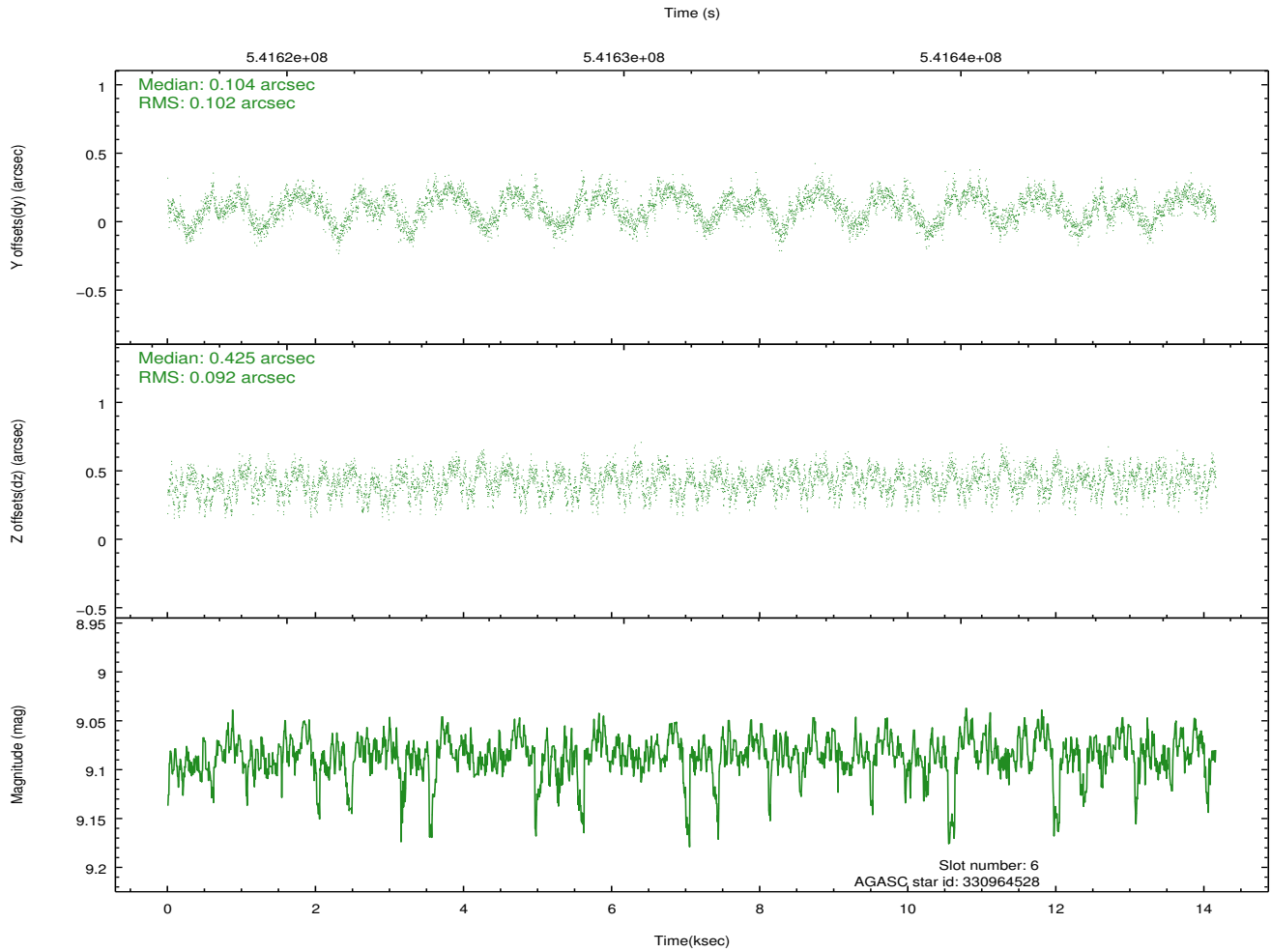
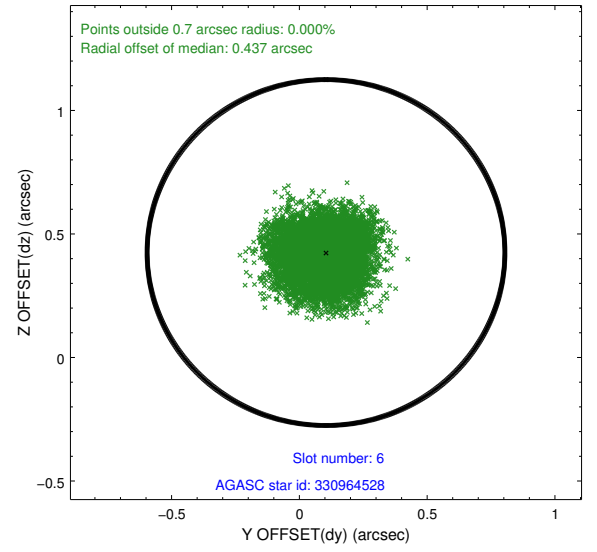
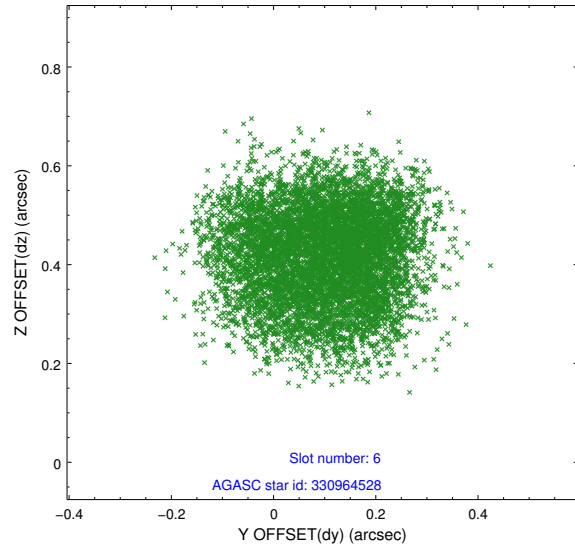
2.4.2 Slot 4



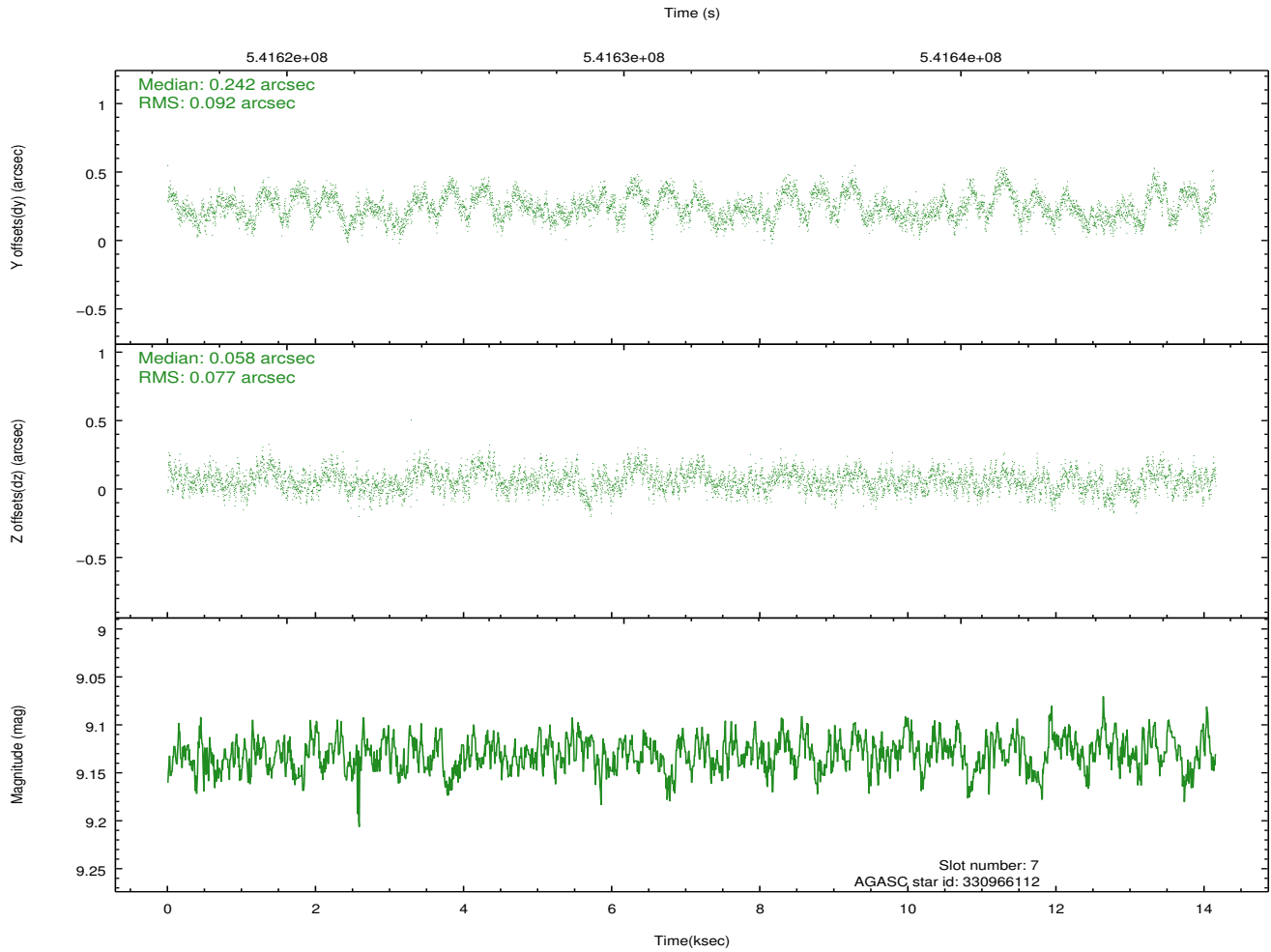
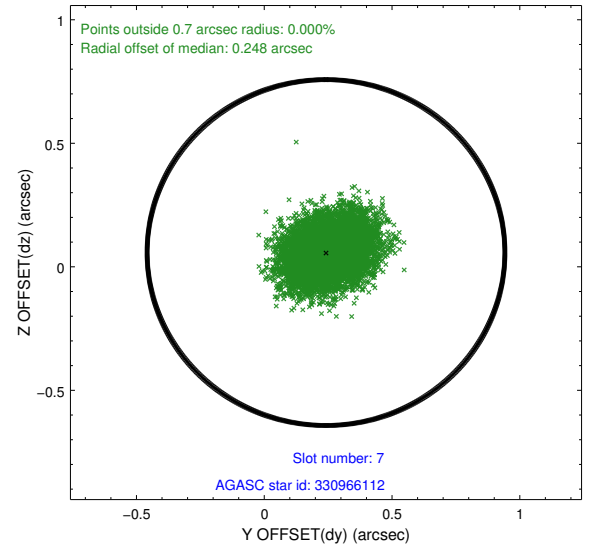
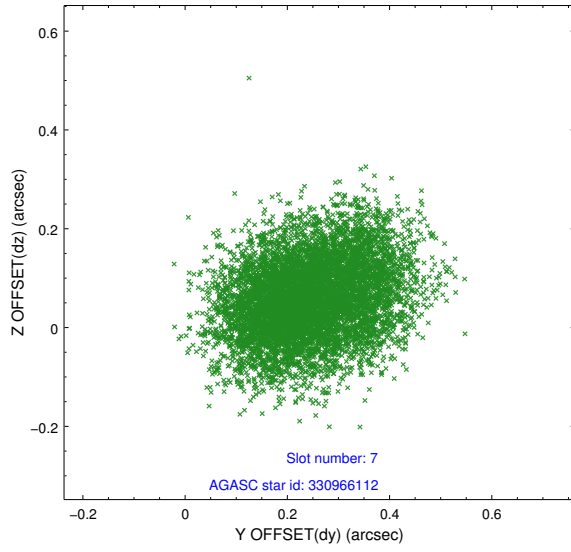
2.4.3 Slot 5



2.4.4 Slot 6

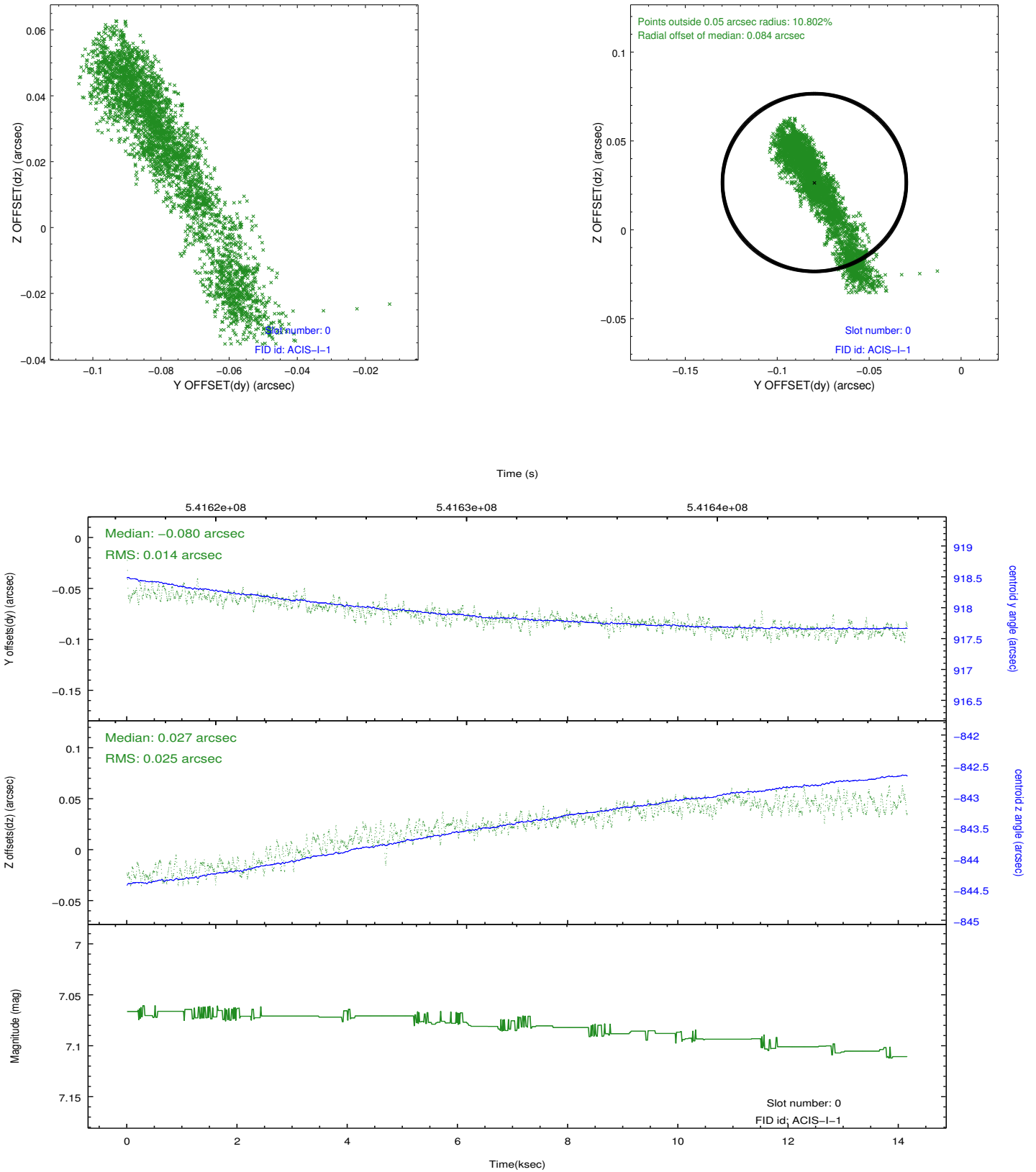


2.4.5 Slot 7

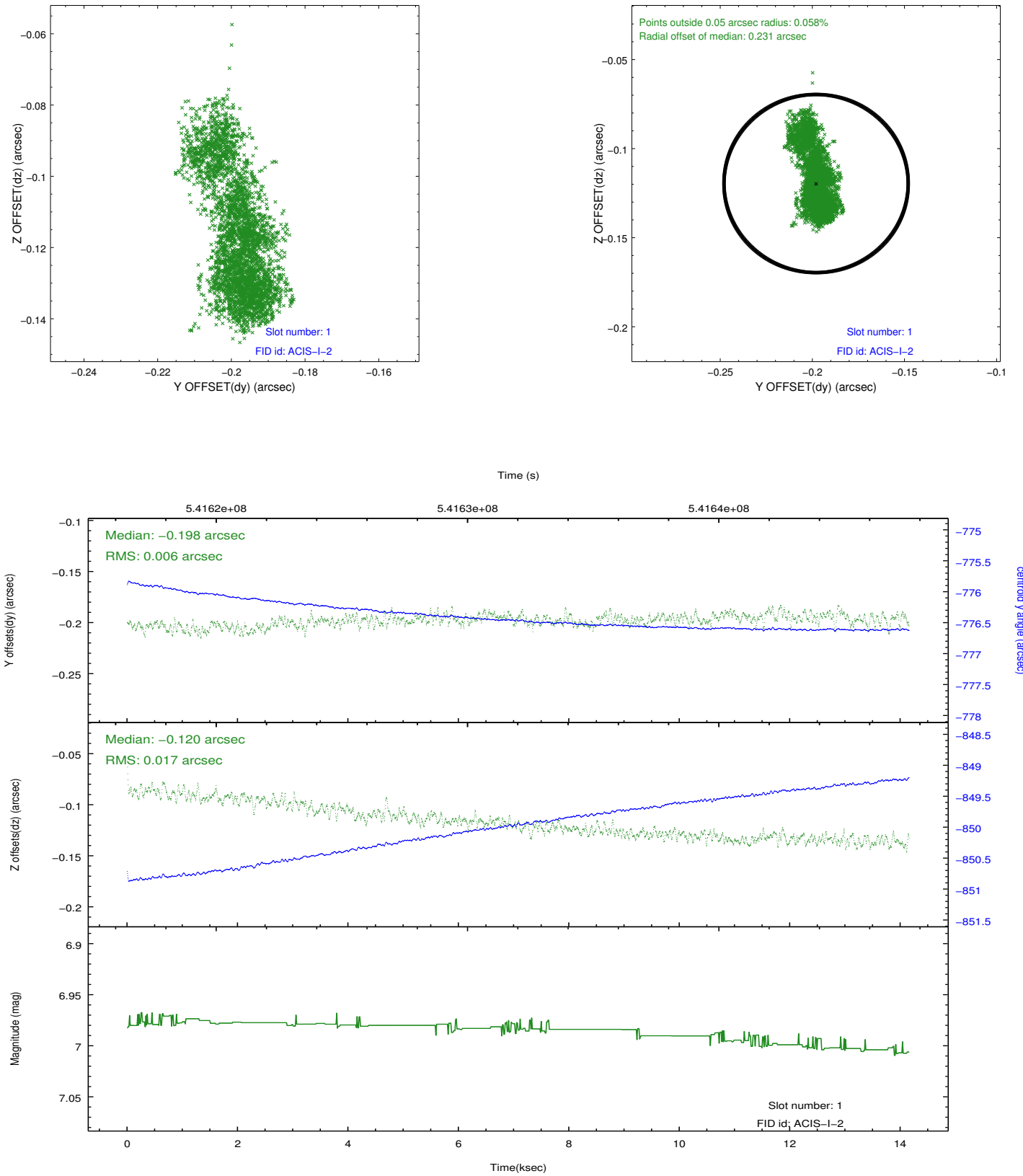


2.5 FID Slots

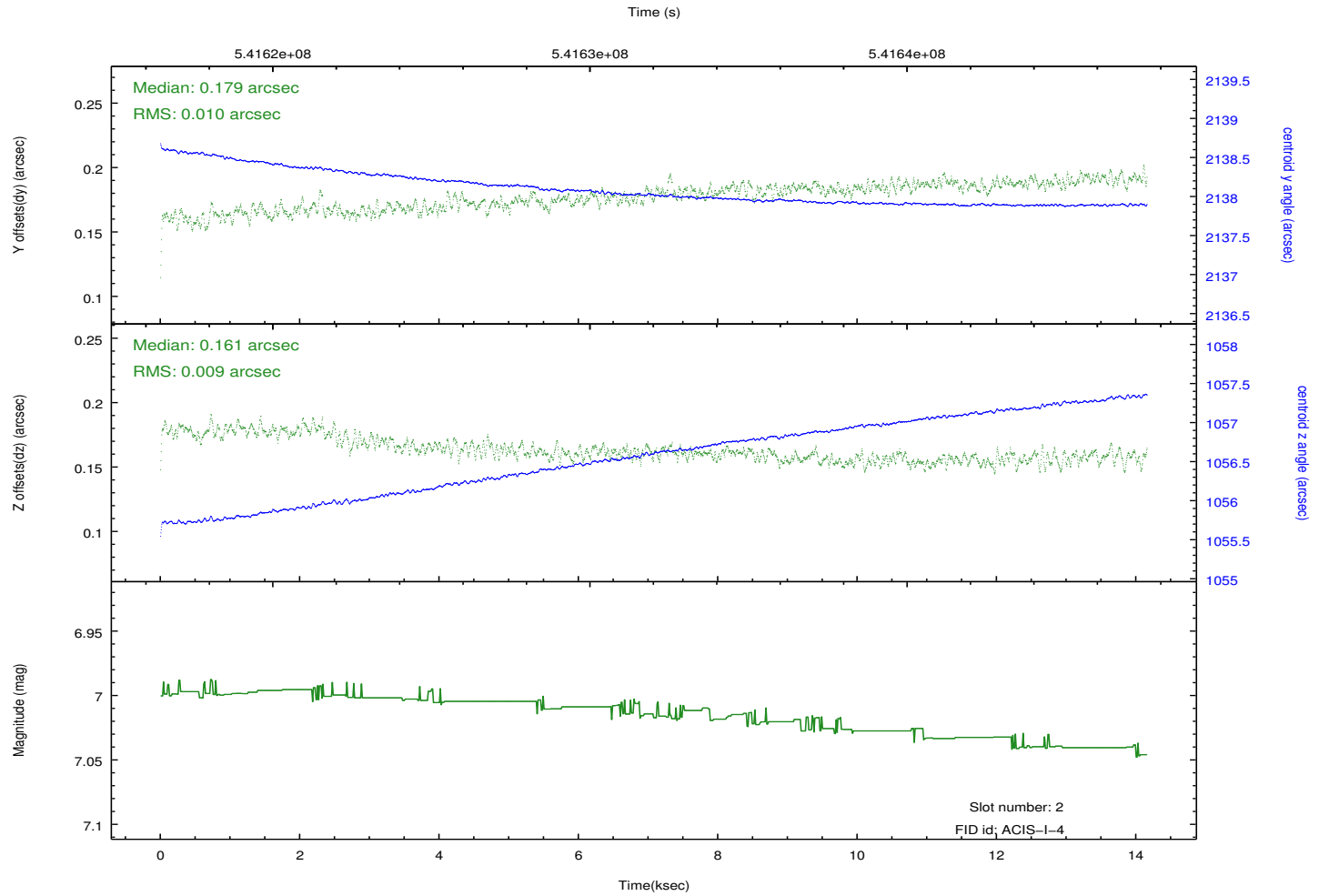
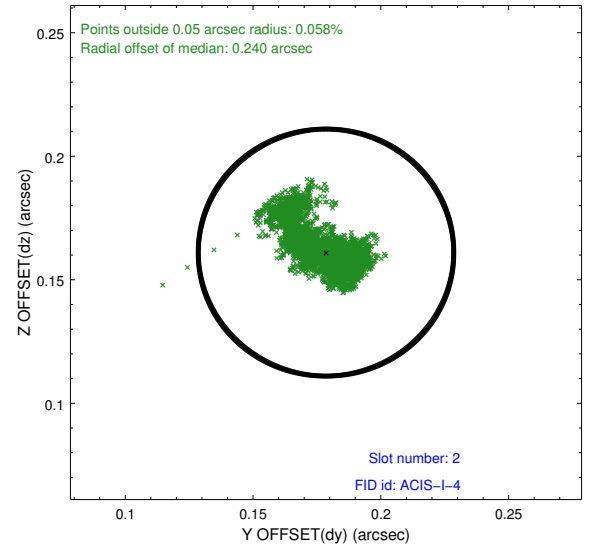
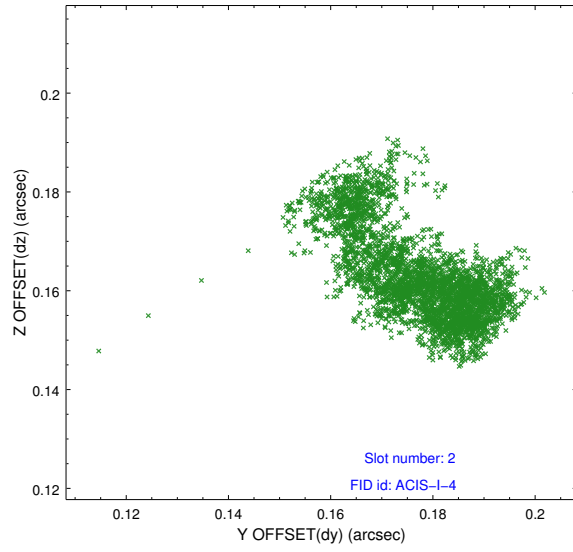
2.5.1 Slot 0



2.5.2 Slot 1



2.5.3 Slot 2



A Summary

A.1 Status

V&V Scientist	Jen Lauer
V&V Date (YYYY-MM-DD)	2015.03.02
V&V Edition	1
V&V Disposition and Status	OK
V&V Charge Time	14.082274001598

A.2 Comments