

# V&V Reference Report

## L2 ASCDS Version : 10.3.3

Observation 17075 - L2 Version 1  
Chandra X-Ray Center

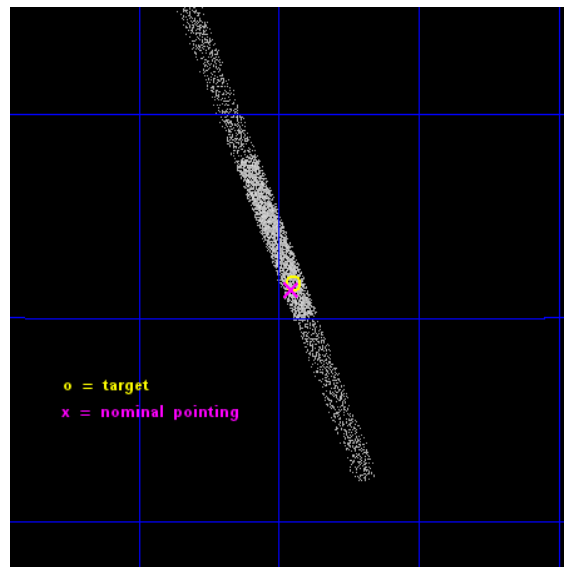
L2 Processing Date : Apr 1 2015

## Contents

<b>1</b>	<b>Front</b>	<b>2</b>
<b>2</b>	<b>OBI</b>	<b>3</b>
2.1	OBI . . . . .	3
2.1.1	Images . . . . .	3
2.1.2	Bias . . . . .	3
2.1.3	Parameters . . . . .	4
2.1.4	Events . . . . .	4
2.2	Compared Parameters . . . . .	5
2.3	Aspect . . . . .	6
2.4	Star Slots . . . . .	9
2.4.1	Slot 3 . . . . .	9
2.4.2	Slot 4 . . . . .	10
2.4.3	Slot 5 . . . . .	11
2.4.4	Slot 6 . . . . .	12
2.4.5	Slot 7 . . . . .	13
2.5	FID Slots . . . . .	14
2.5.1	Slot 0 . . . . .	14
2.5.2	Slot 1 . . . . .	15
2.5.3	Slot 2 . . . . .	16
<b>A</b>	<b>Summary</b>	<b>17</b>
A.1	Status . . . . .	17
A.2	Comments . . . . .	17

# 1 Front

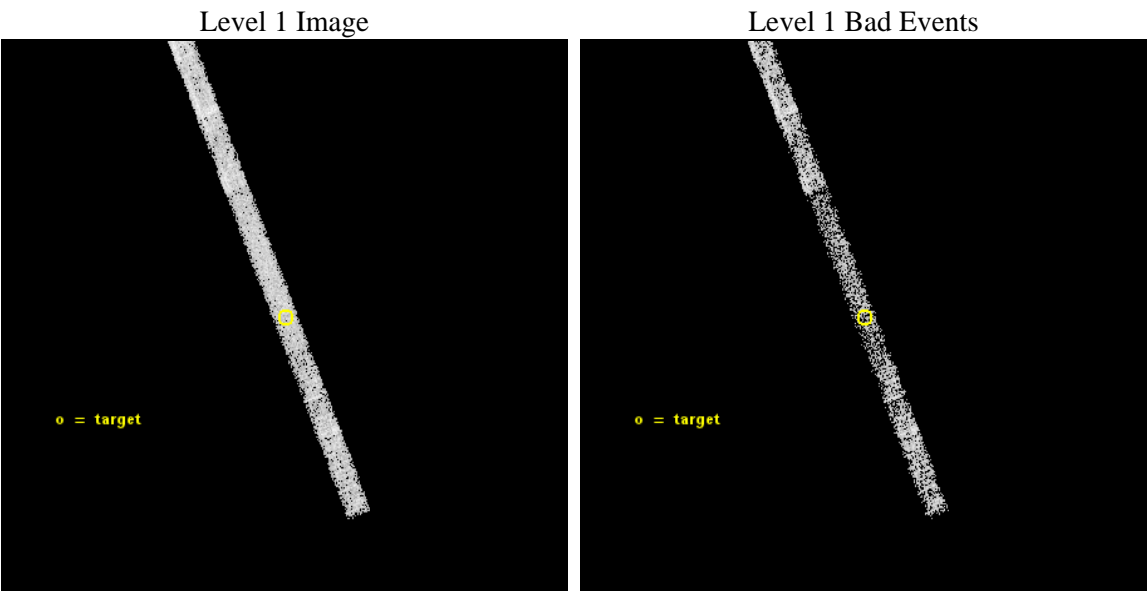
seq_num	703079	Sequence number
obs_id	17075	Observation id
title	MERGER-TRIGGERED NUCLEAR ACTIVITY AT SUB-KILOPARSEC SCALES	Proposa
observer	Dr. Giuseppina Fabbiano	Principal investigator
object	Mrk 1263	Source name
dtcycle	0	&#160
cycle	P	events from which exps? Prim/Second/Both
ra_targ	162.237083	Observer's specified target RA [deg]
dec_targ	12.194944	Observer's specified target Dec [deg]
ra_nom	162.23870216443	Nominal RA [deg]
dec_nom	12.189753296973	Nominal Dec [deg]
roll_nom	248.15617069723	Nominal Roll [deg]
revision	1	Processing version of data
ontime	10103.340379477	Sum of GTIs [s]
livetime	9456.5147692592	Livetime [s]
ontime6	10103.299339533	Sum of GTIs [s]
ontime7	10103.340379477	Sum of GTIs [s]
ontime8	10103.25829947	Sum of GTIs [s]
l2events	5560	Number of level 2 events



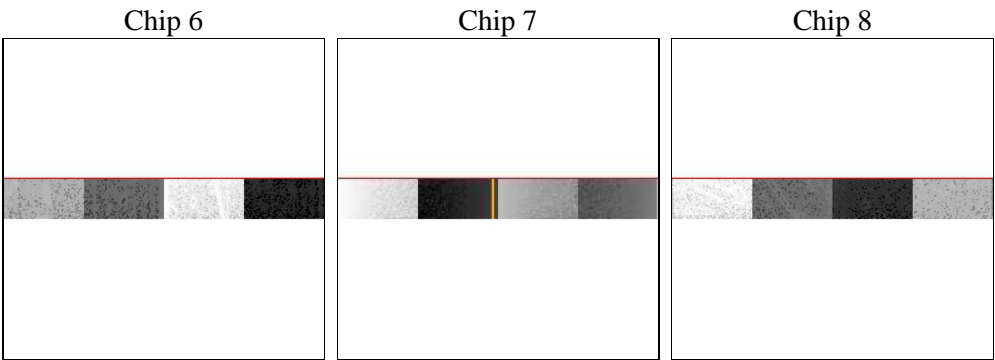
# 2 OBI

## 2.1 OBI

### 2.1.1 Images



### 2.1.2 Bias



### 2.1.3 Parameters

obi_num	0	Obi number	sched_exp_time	10000.000000	[s] Scheduled observation exposure time
ascdsver	10.3.3	Processing system revision	ontime	10103.340379477	Sum of GTIs [s]
caldsver	4.6.7	&#160	ontime6	10103.299339533	Sum of GTIs [s]
date	2015-04-01T14:41:40	Date and time of file creation	ontime7	10103.340379477	Sum of GTIs [s]
revision	1	Processing version of data	ontime8	10103.25829947	Sum of GTIs [s]
			l1events	28279	Number of level 1 events

### 2.1.4 Events

	ccd 6	ccd 7	ccd 8
level 1 events	8088	8779	11412
rejected events	7085	4639	8974
rejected %	87%	52%	78%

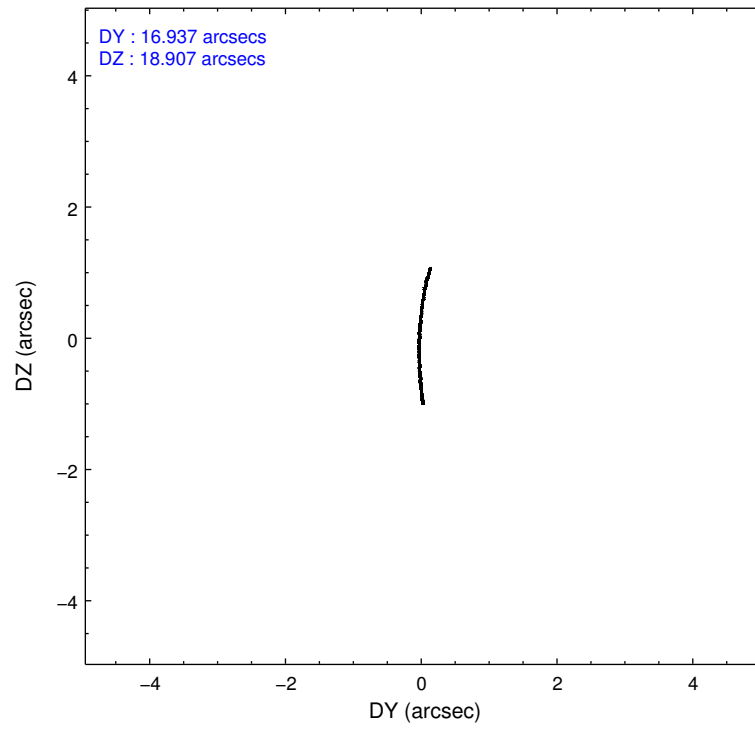
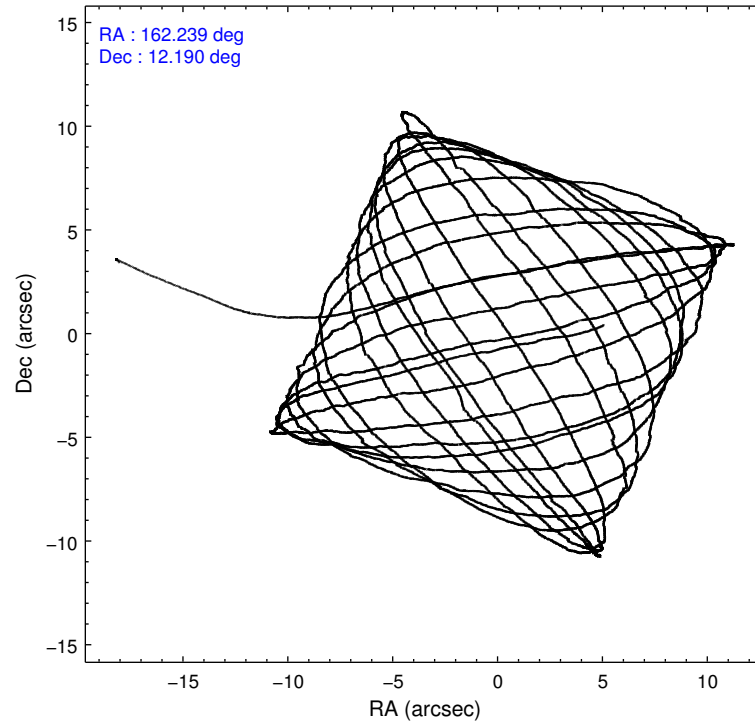
	ccd 6	ccd 7	ccd 8
grade 0 events	249	414	557
	3%	4%	4%
grade 1 events	1	6	7
	0%	0%	0%
grade 2 events	220	836	559
	2%	9%	4%
grade 3 events	177	501	271
	2%	5%	2%
grade 4 events	154	517	232
	1%	5%	2%
grade 5 events	293	934	430
	3%	10%	3%
grade 6 events	203	1873	819
	2%	21%	7%
grade 7 events	6791	3698	8537
	83%	42%	74%

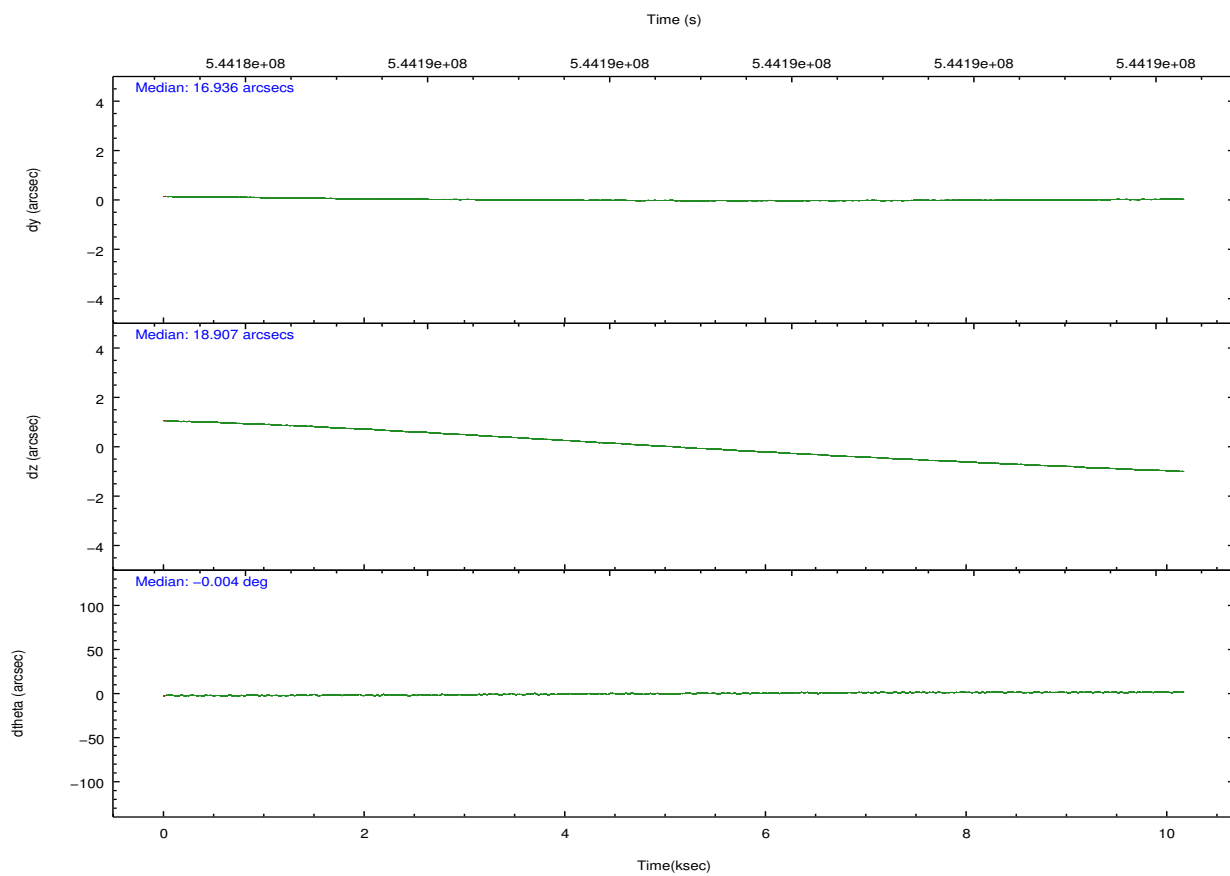
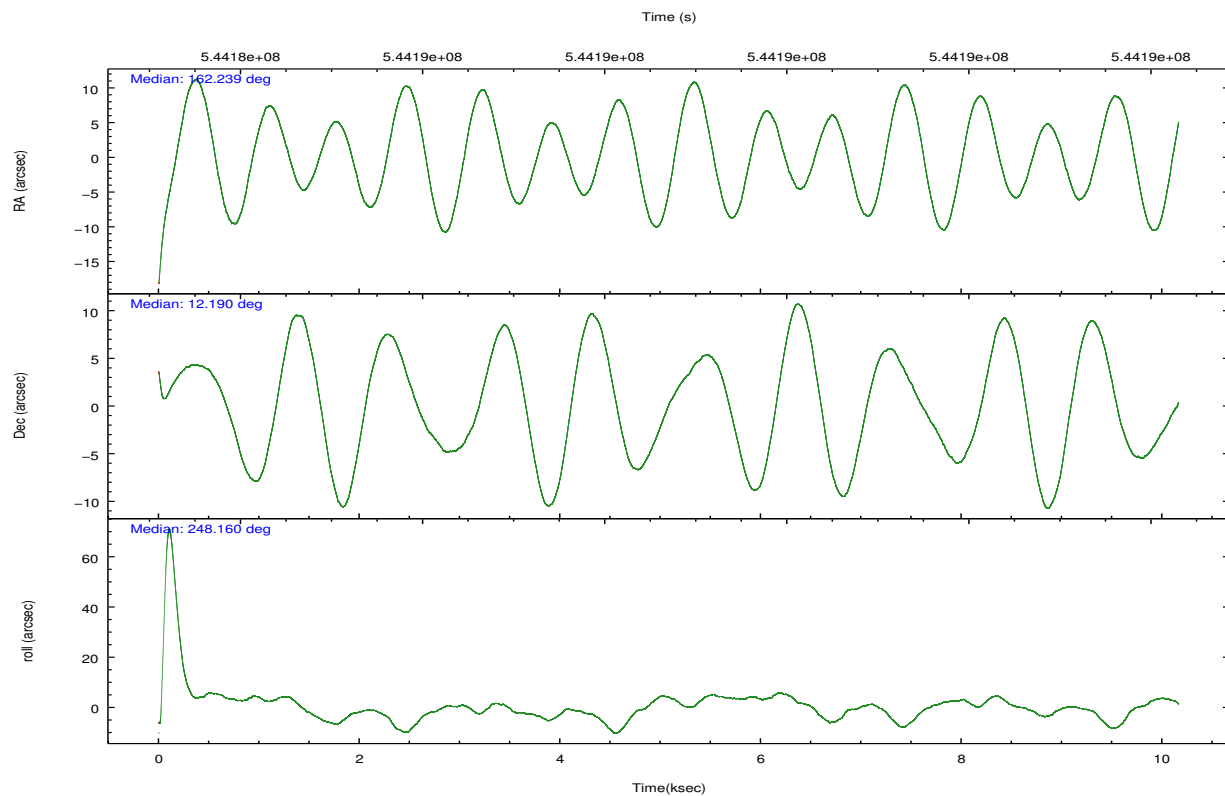


## 2.2 Compared Parameters

Parameter	Planned	Actual	Parameter	Planned	Actual
Instrument	ACIS	ACIS	Obspar format version number	7	7
Detector	ACIS-678	ACIS-678	Obspar file type	PREDICTED	ACTUAL
Grating	NONE	NONE	Obspar update status	NONE	UPDATED
Data mode	FAINT	FAINT	CCD I0 on	N	N
Observation mode	POINTING	POINTING	CCD I1 on	N	N
[deg] Pointing RA	162.234369	162.2387021644309	CCD I2 on	N	N
[deg] Pointing Dec	12.216865	12.18975329697335	CCD I3 on	N	N
[deg] Pointing Roll	248.000571	248.1561706972274	CCD S0 on	N	N
[mm] SIM focus pos	-0.684267	-0.6828225247311905	CCD S1 on	N	N
[mm] SIM defocus	0	0.001444936568705701	CCD S2 on	O2	Y
[mm] SIM translation stage pos	-190.132523	-190.1425803651734	CCD S3 on	Y	Y
[mm] SIM translation stage offset	0	0.01005778216563158	CCD S4 on	O1	Y
[s] Observation start time (MET)	544183785.184000	544182540.93376	CCD S5 on	N	N
Observation start date	2015-03-31T10:08:38	2015-03-31T09:49:00	Number of optional ACIS chips dropped	0	0
[s] Observation end time (MET)	544193785.184000	544194883.98446	On-chip summing requested	N	N
Observation end date	2015-03-31T12:55:18	2015-03-31T13:14:43	Subarray requested	CUSTOM	1/8
Read mode	TIMED	TIMED	Subarray start row	449	449
			Subarray row count	128	128
			Alternating exposures requested	N	N
			[s] Primary exposure time	0.000000	0.6

## 2.3 Aspect



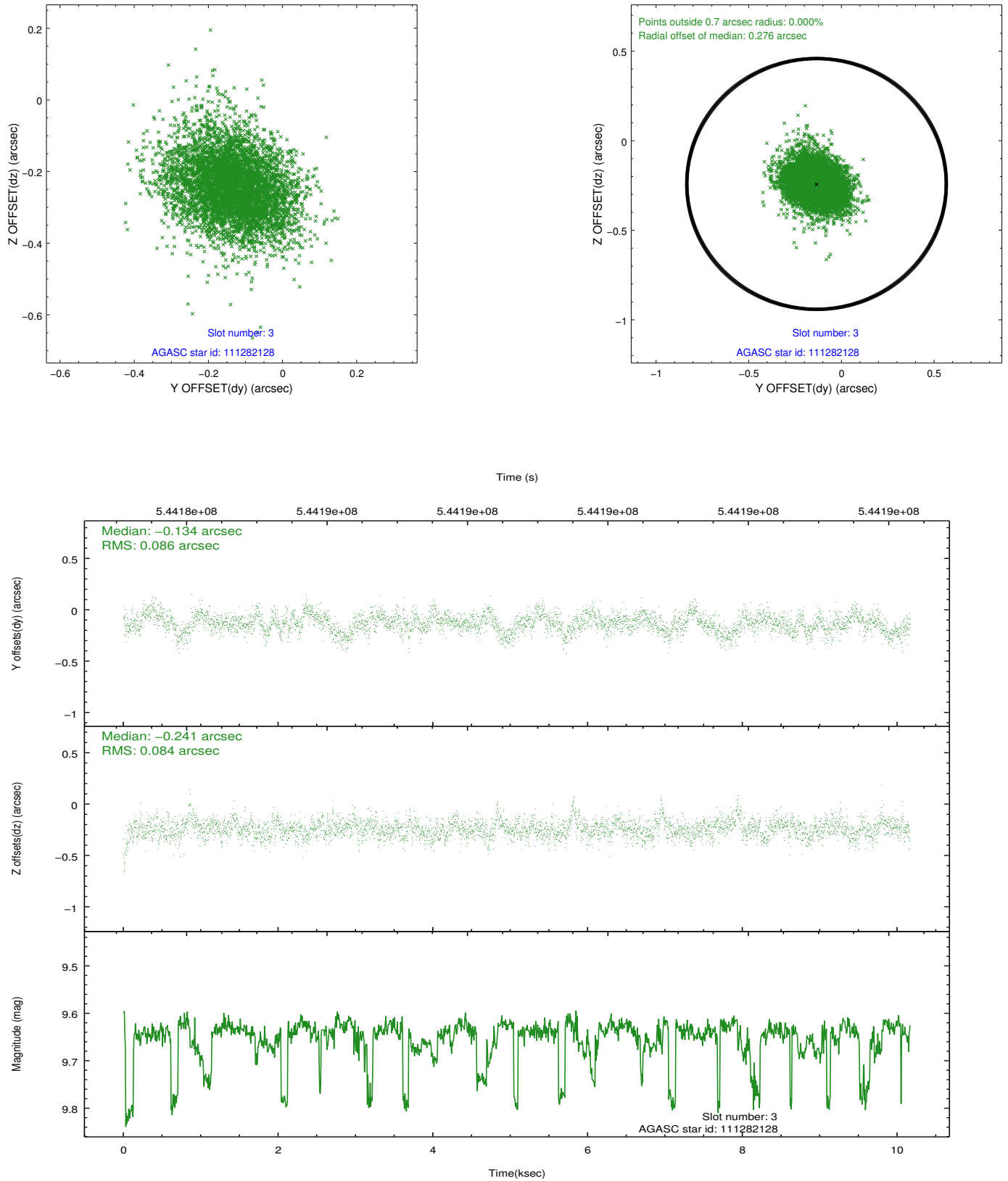


### Slot Statistics

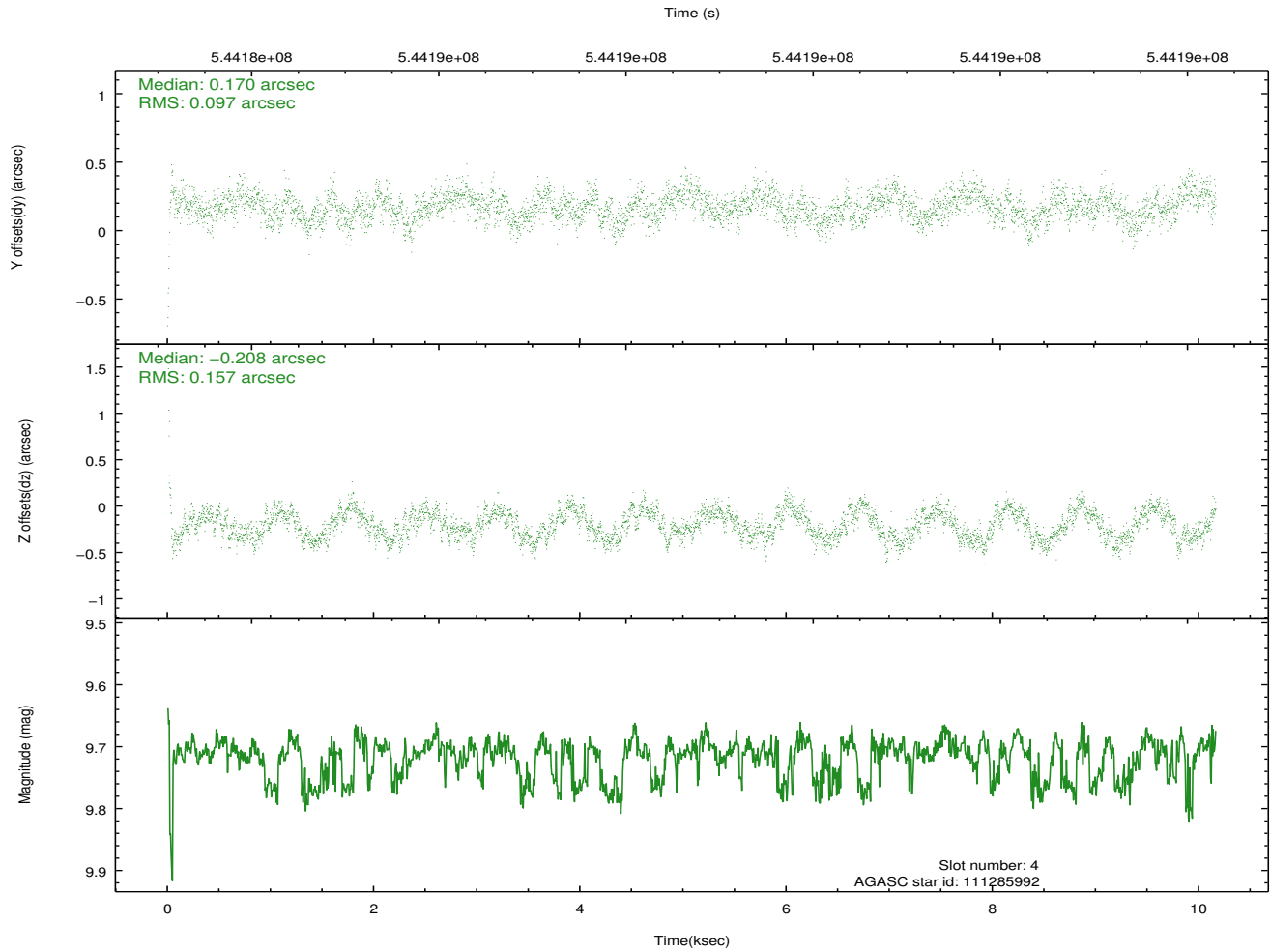
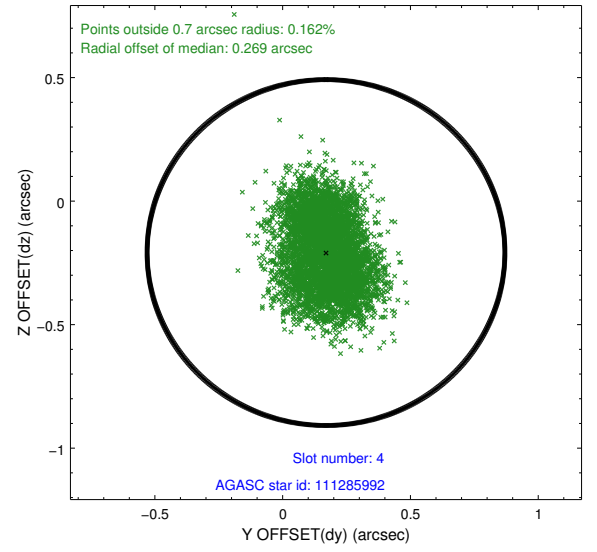
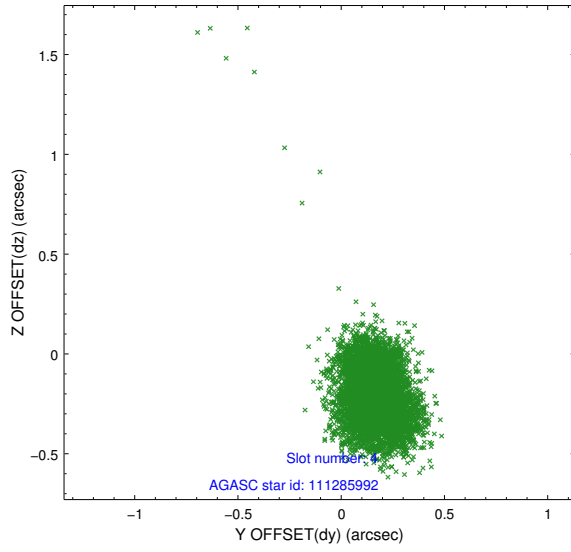
slot	status	used	id	mag	n_pts	med_dy	med_dz	dr1	dr2	ra	dec	mean_y	mean_z
0	FID		ACIS-S-2	6.95	2480	-0.097	-0.054	0.020	0.029	0.000000	0.000000	-770.06	-1740.41
1	FID		ACIS-S-4	7.04	2480	0.275	0.060	0.010	0.017	0.000000	0.000000	2143.34	167.65
2	FID		ACIS-S-5	7.06	2480	-0.209	0.001	0.017	0.027	0.000000	0.000000	-1822.36	161.84
3	GUIDE	used	111282128	9.64	4952	-0.134	-0.241	0.126	0.210	162.570224	12.424897	-1137.01	814.01
4	GUIDE	used	111285992	9.71	4941	0.170	-0.208	0.188	0.284	162.048017	11.891969	1330.56	-170.58
5	GUIDE	used	111290552	7.99	4959	-0.294	-0.063	0.116	0.178	162.689944	12.267517	-769.97	1417.69
6	GUIDE	used	111682048	8.84	4958	0.007	0.177	0.096	0.154	162.332050	12.842718	-2216.30	-527.39
7	GUIDE	used	111682128	10.16	4950	0.248	0.340	0.240	0.364	162.195207	12.576124	-1147.41	-611.57

## 2.4 Star Slots

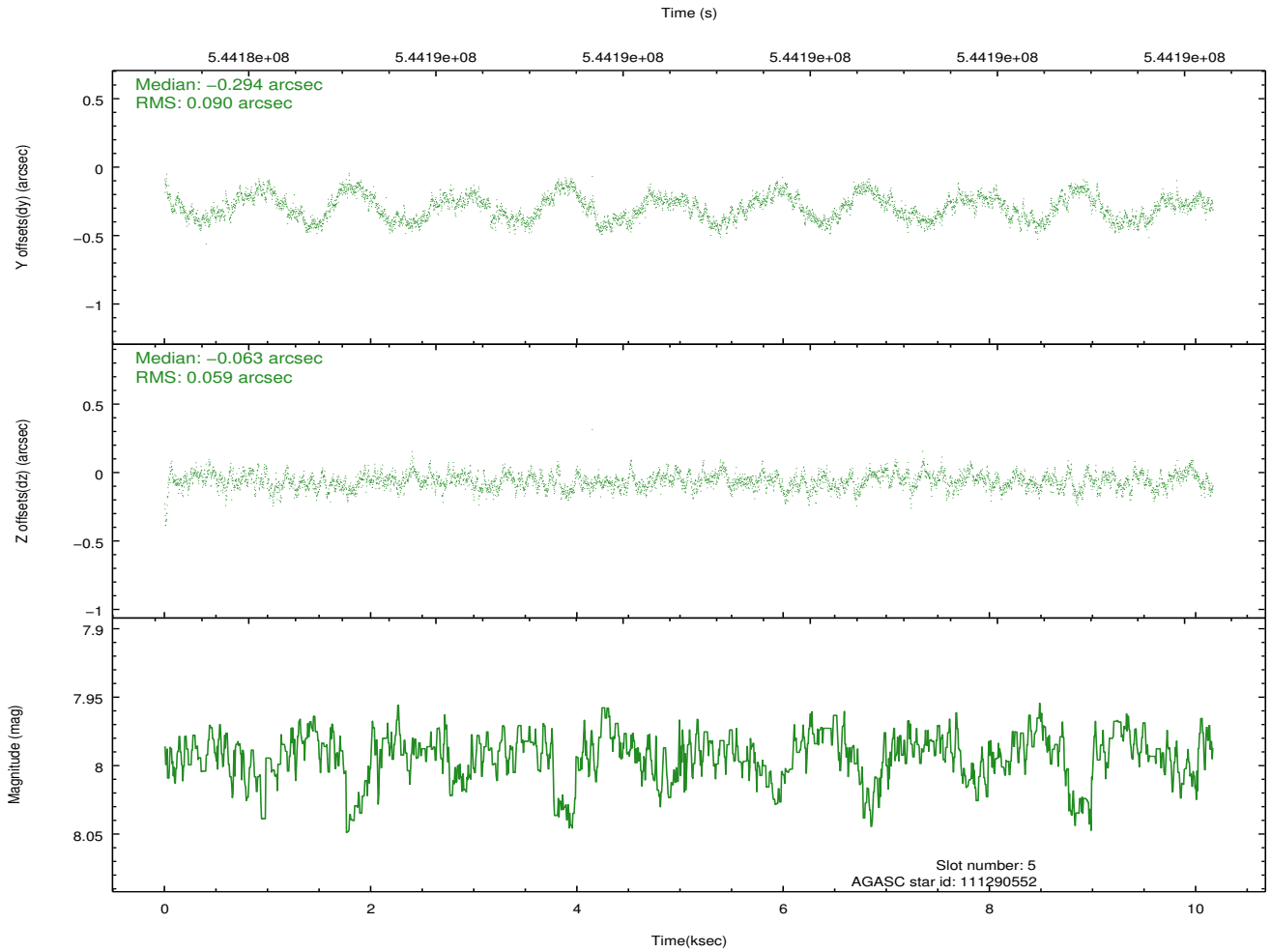
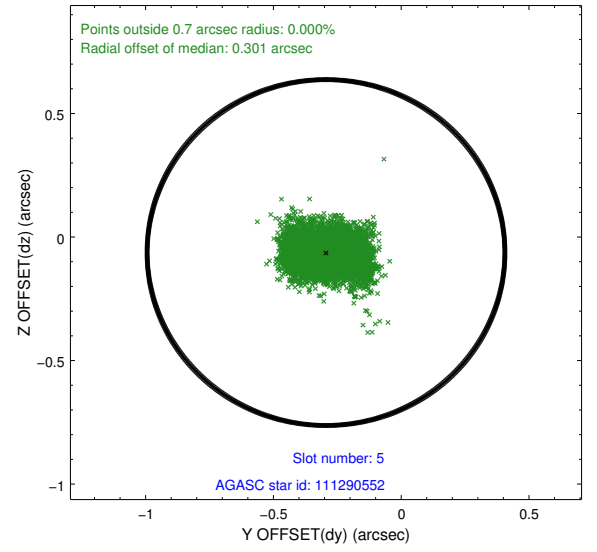
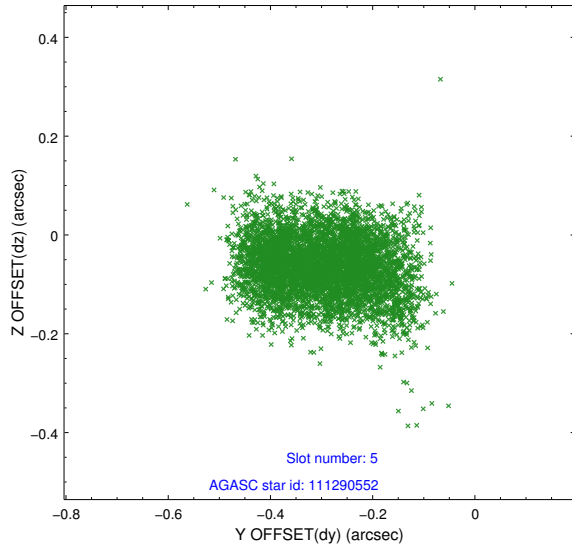
### 2.4.1 Slot 3



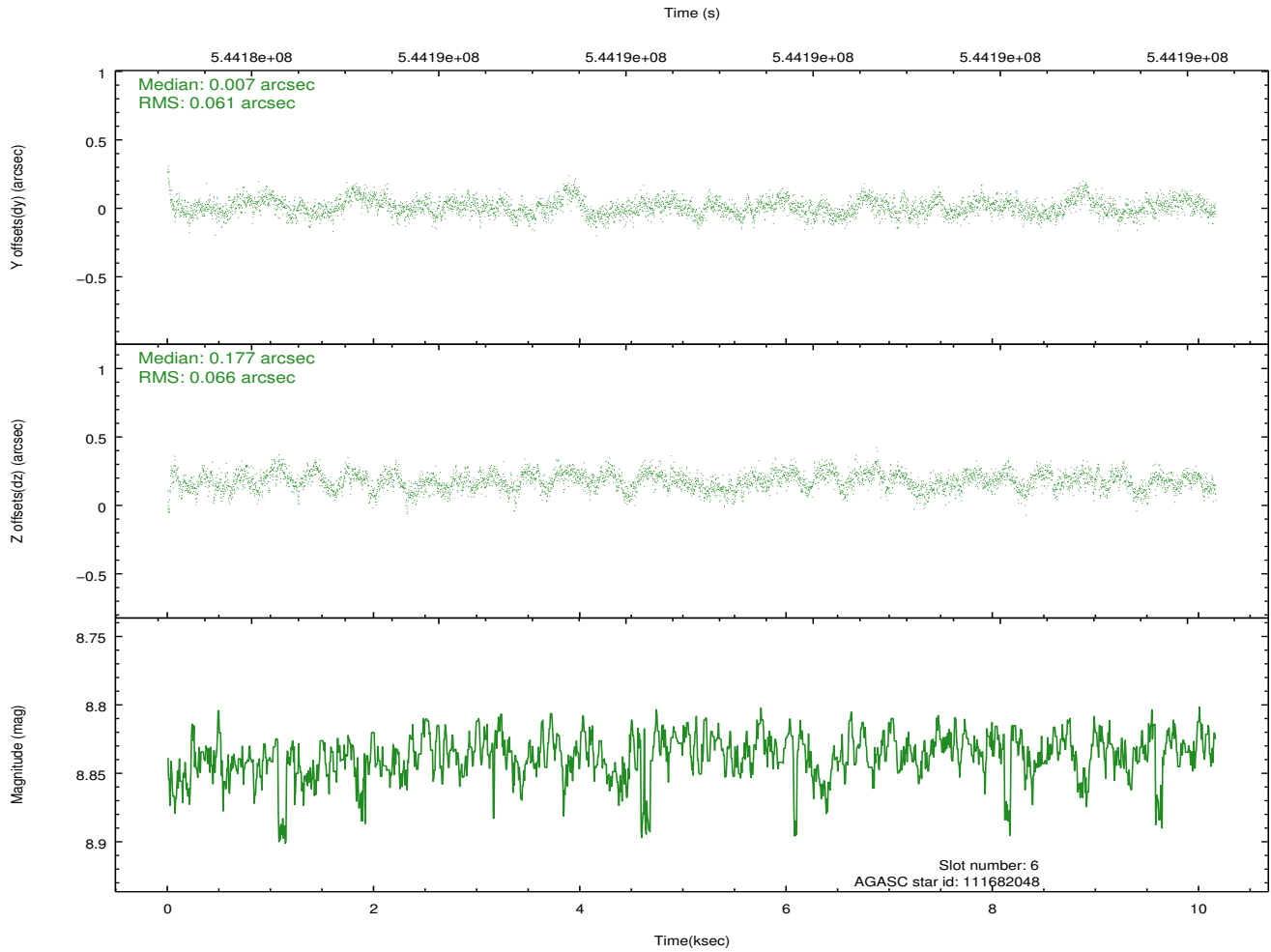
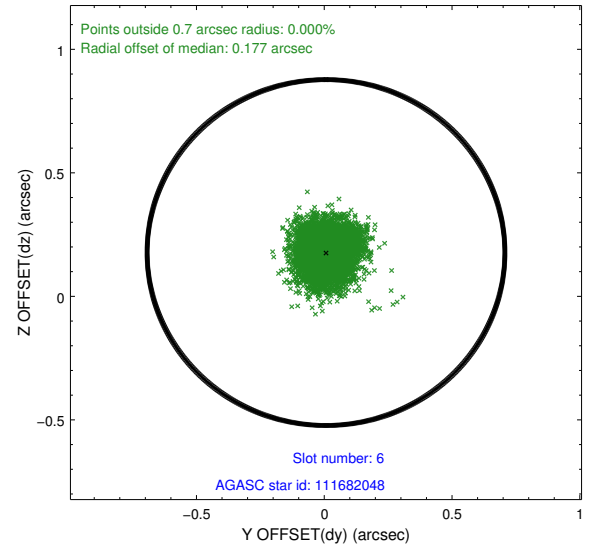
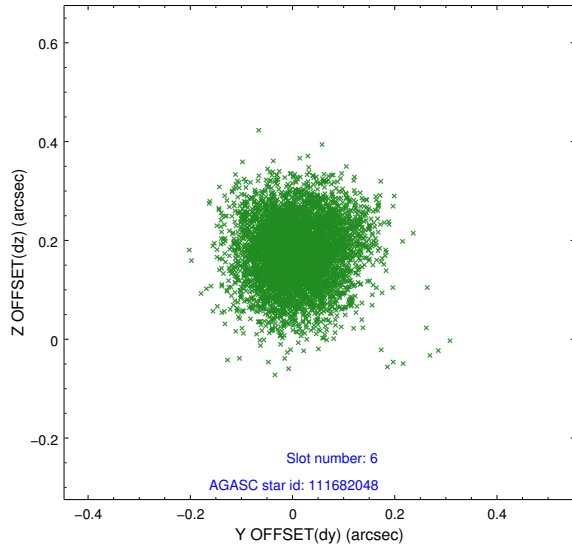
## 2.4.2 Slot 4



### 2.4.3 Slot 5

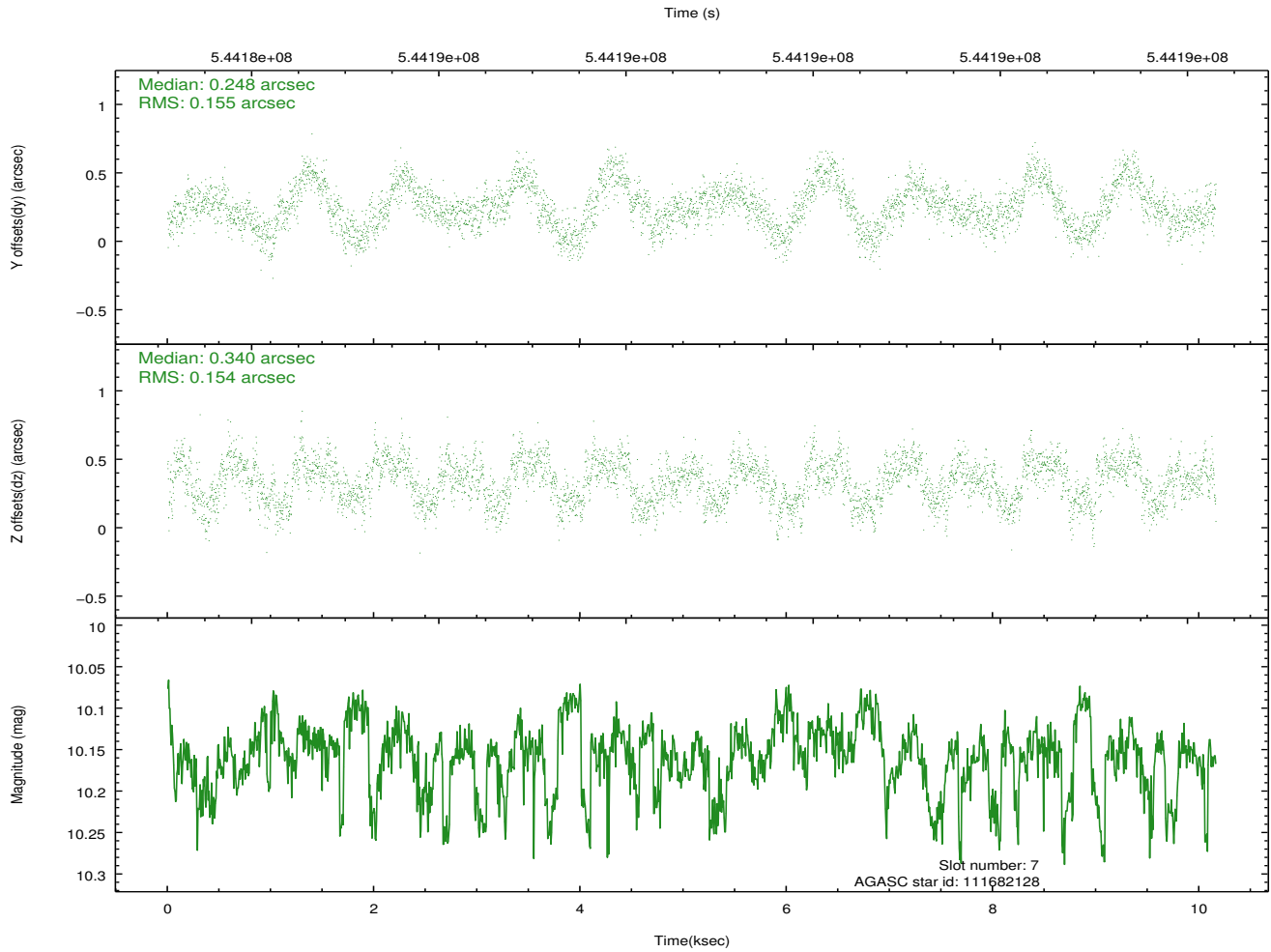
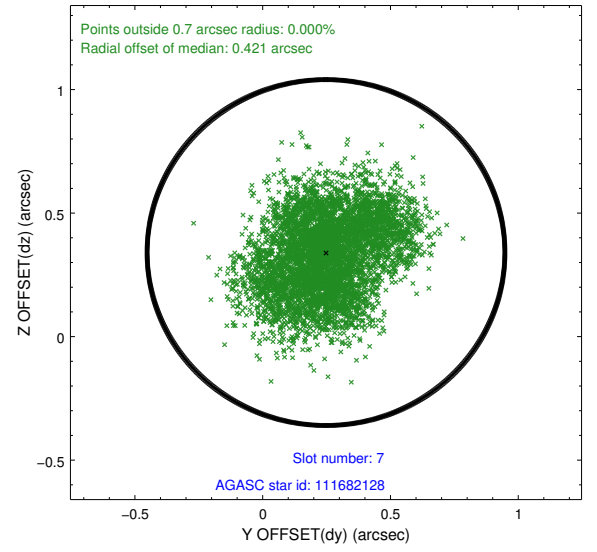
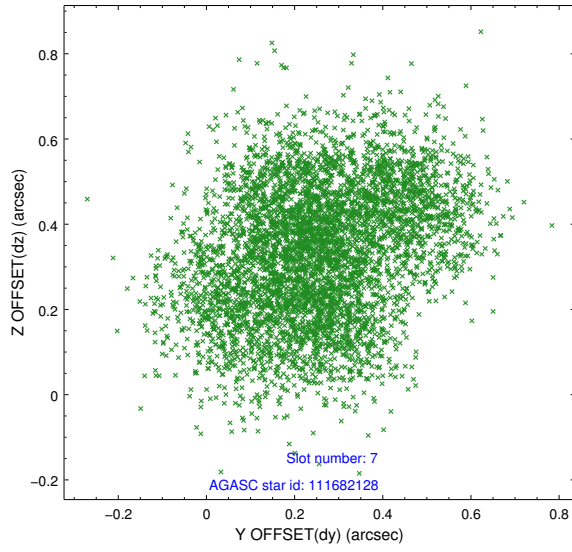


## 2.4.4 Slot 6



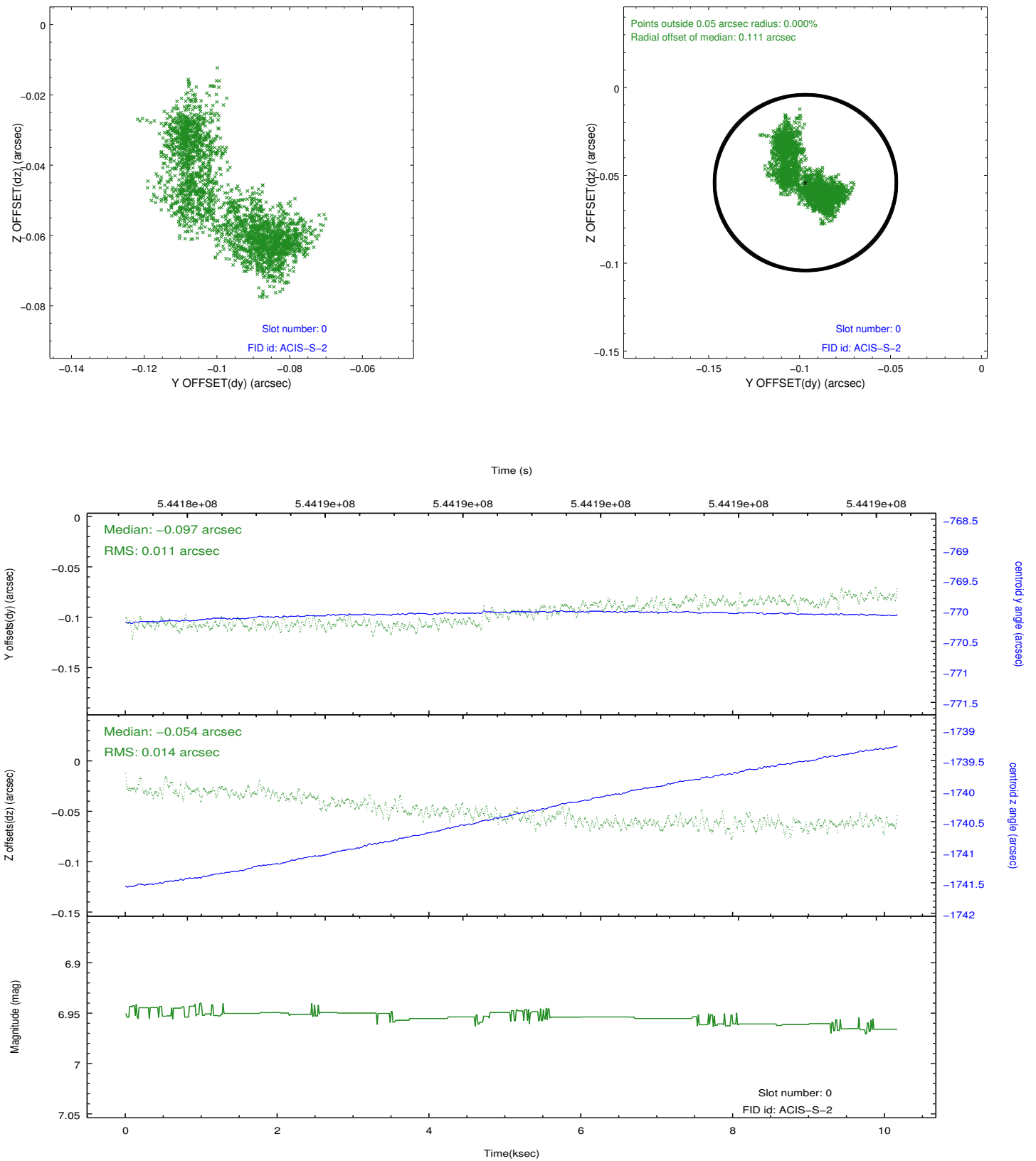


## 2.4.5 Slot 7

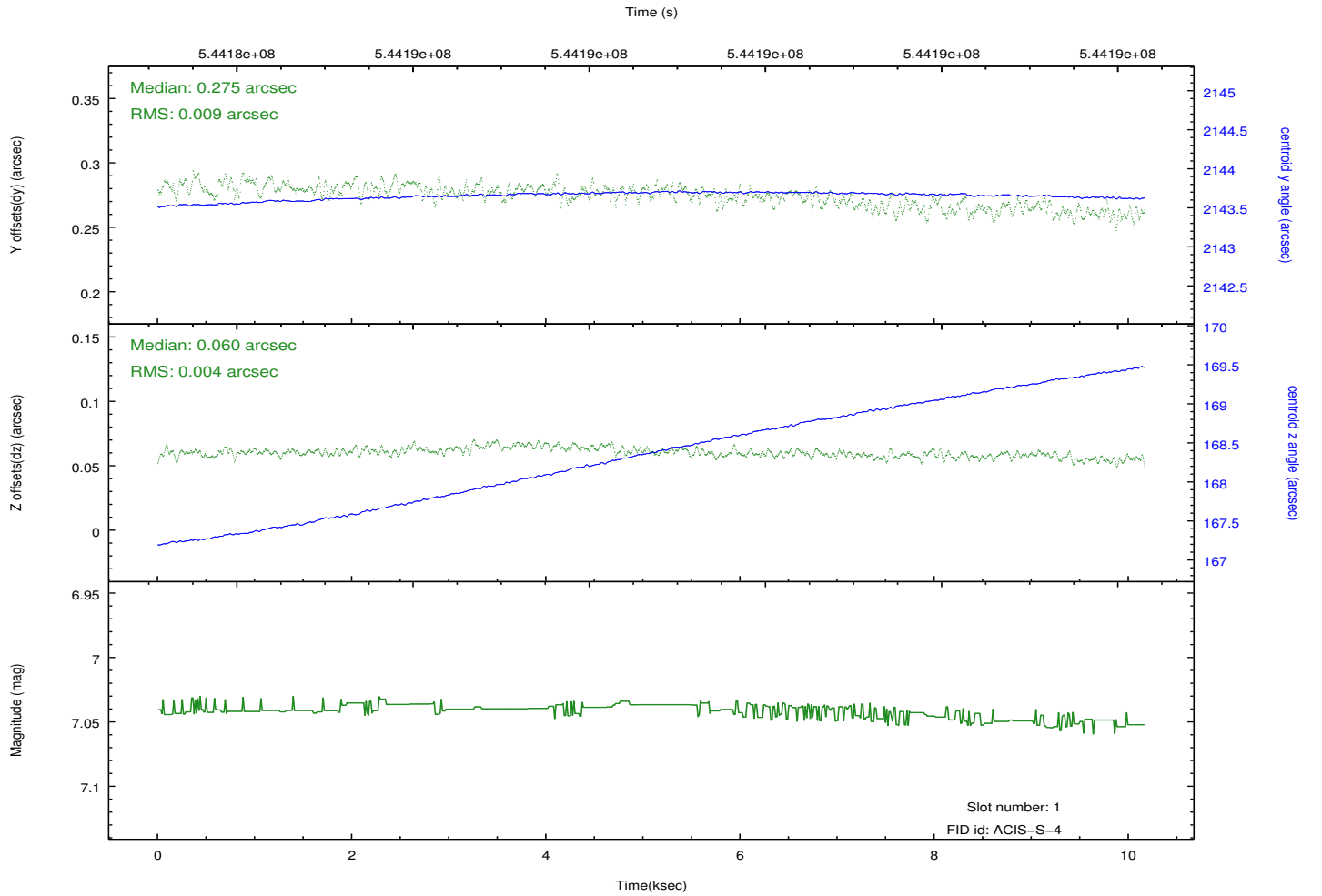
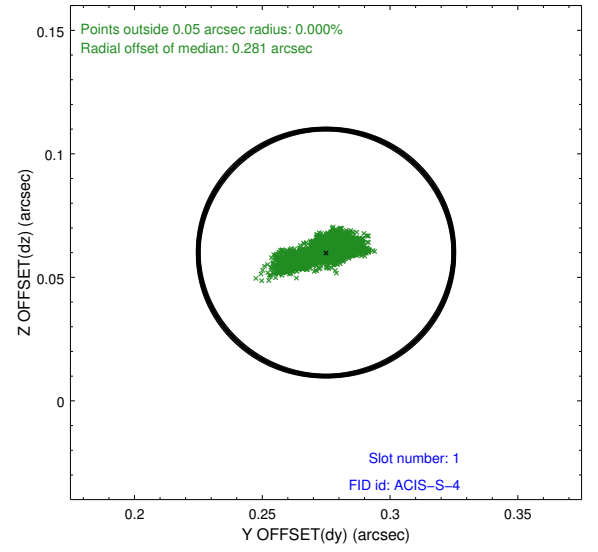
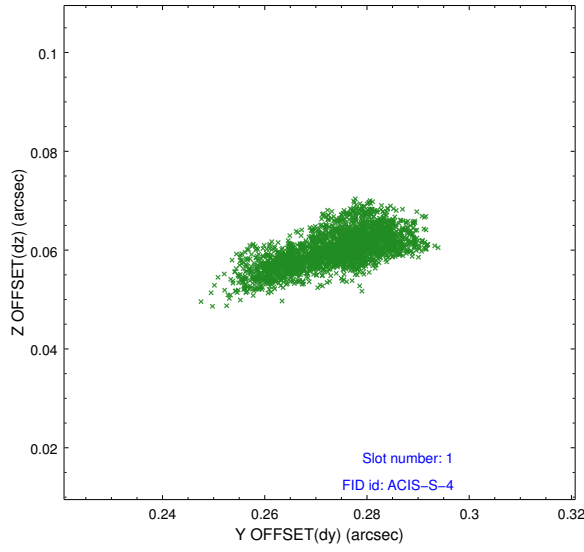


## 2.5 FID Slots

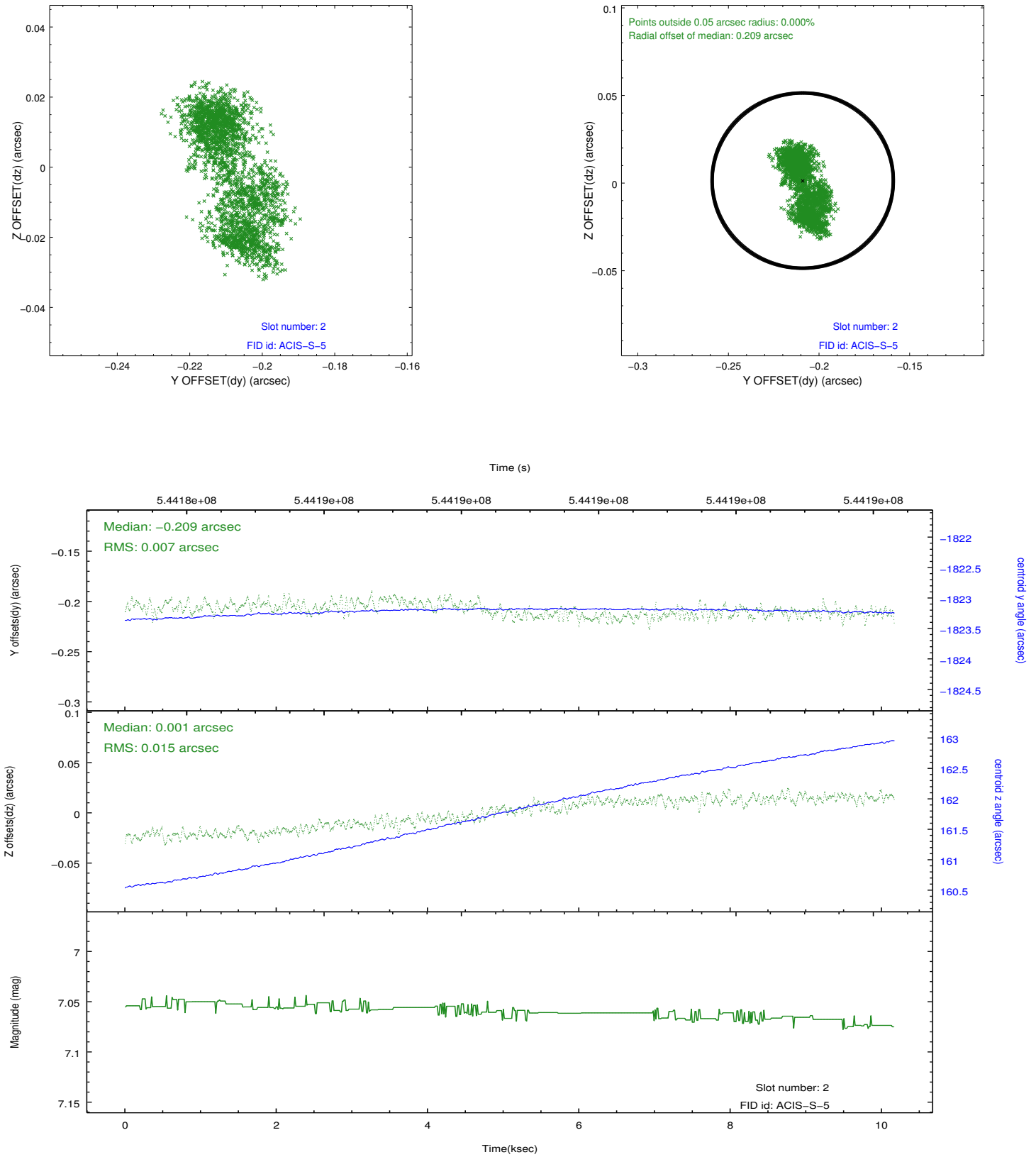
### 2.5.1 Slot 0



## 2.5.2 Slot 1



### 2.5.3 Slot 2



## A Summary

### A.1 Status

V&V Scientist	Beth Sundheim
V&V Date (YYYY-MM-DD)	2015.04.01
V&V Edition	1
V&V Disposition and Status	OK
V&V Charge Time	10.103340379477

### A.2 Comments