

V&V Reference Report

L2 ASCDS Version : 10.3.1

Observation 17004 - L2 Version 1
Chandra X-Ray Center

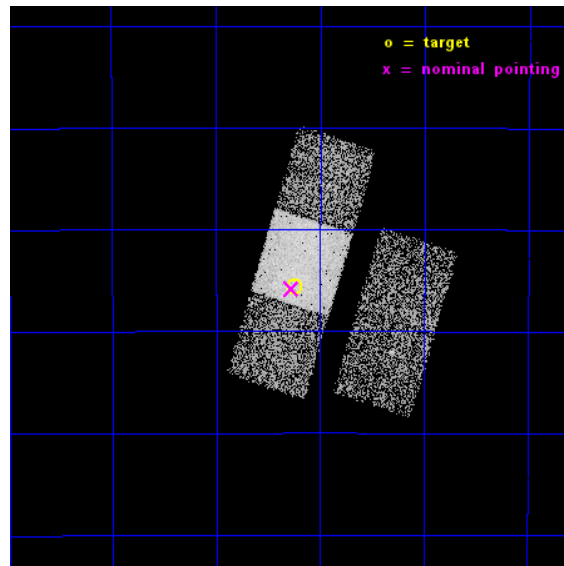
L2 Processing Date : Dec 22 2014

Contents

1	Front	2
2	OBI	3
2.1	OBI	3
2.1.1	Images	3
2.1.2	Bias	3
2.1.3	Parameters	4
2.1.4	Events	4
2.2	Compared Parameters	5
2.3	Aspect	6
2.4	Star Slots	9
2.4.1	Slot 3	9
2.4.2	Slot 4	10
2.4.3	Slot 5	11
2.4.4	Slot 6	12
2.4.5	Slot 7	13
2.5	FID Slots	14
2.5.1	Slot 0	14
2.5.2	Slot 1	15
2.5.3	Slot 2	16
A	Summary	17
A.1	Status	17
A.2	Comments	17

1 Front

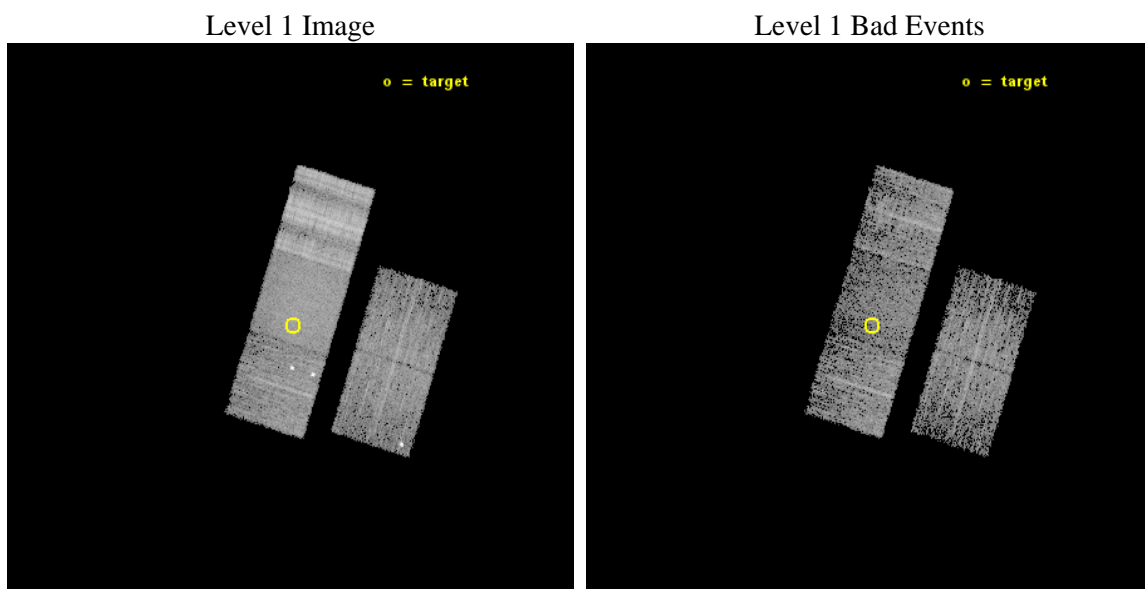
seq_num	601197	Sequence number
obs_id	17004	Observation id
title	Super-massive black holes and nuclear star clusters in late type galaxies	Proposal title
observer	Elena Gallo	Principal investigator
object	ESO241-6	Source name
dtcycle	0	
cycle	P	events from which exps? Prim/Second/Both
ra_targ	359.062917	Observer's specified target RA [deg]
dec_targ	-43.427528	Observer's specified target Dec [deg]
ra_nom	359.06913489279	Nominal RA [deg]
dec_nom	-43.430554061296	Nominal Dec [deg]
roll_nom	287.24718702297	Nominal Roll [deg]
revision	1	Processing version of data
ontime	4763.3759049773	Sum of GTIs [s]
livetime	4701.1388920325	Livetime [s]
ontime2	4763.2117449641	Sum of GTIs [s]
ontime3	4763.2938249707	Sum of GTIs [s]
ontime6	4763.334864974	Sum of GTIs [s]
ontime7	4763.3759049773	Sum of GTIs [s]
ontime8	4763.2527849674	Sum of GTIs [s]
l2events	33798	Number of level 2 events



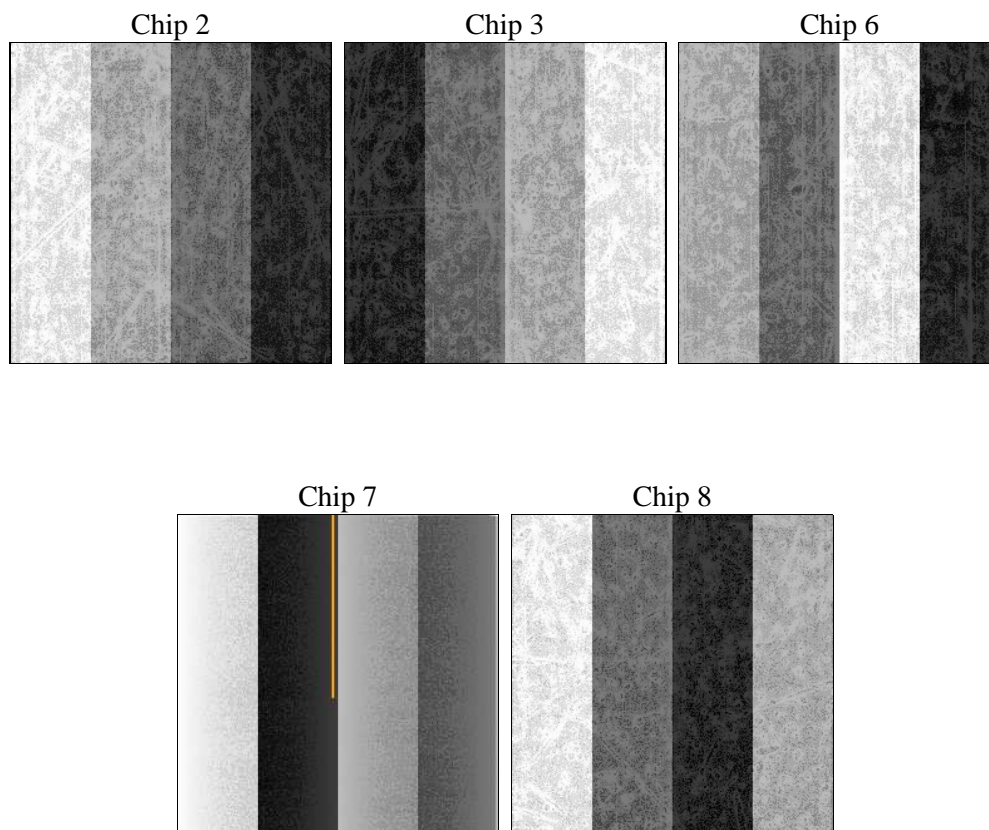
2 OBI

2.1 OBI

2.1.1 Images



2.1.2 Bias



2.1.3 Parameters

obi_num	0	Obi number	sched_exp_time	4700.000000	[s] Scheduled observation exposure time
ascdsver	10.3.1	Processing system revision	ontime	4763.3759049773	Sum of GTIs [s]
caldsver	4.6.5	 	ontime2	4763.2117449641	Sum of GTIs [s]
date	2014-12-22T11:46:30	Date and time of file creation	ontime3	4763.2938249707	Sum of GTIs [s]
revision	1	Processing version of data	ontime6	4763.334864974	Sum of GTIs [s]
			ontime7	4763.3759049773	Sum of GTIs [s]
			ontime8	4763.2527849674	Sum of GTIs [s]
			l1events	204758	Number of level 1 events

2.1.4 Events

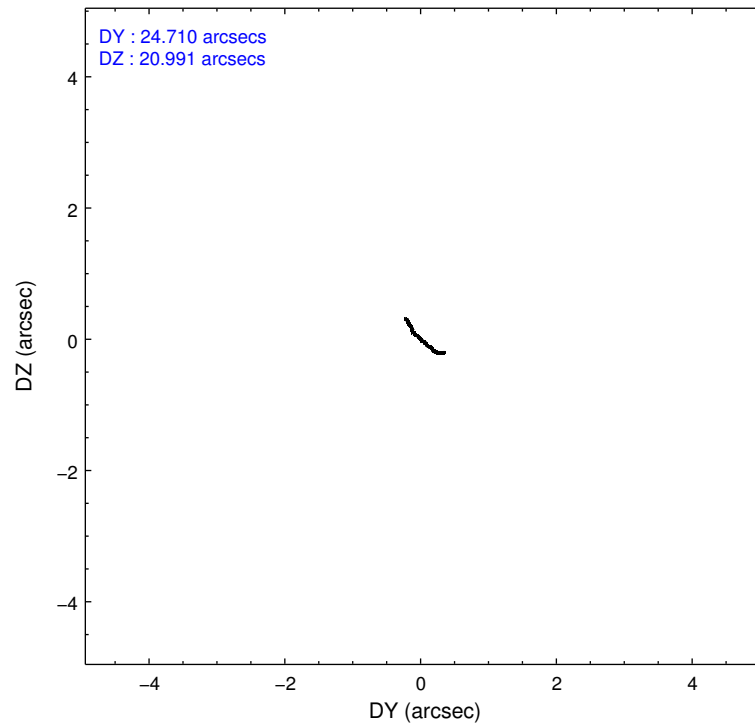
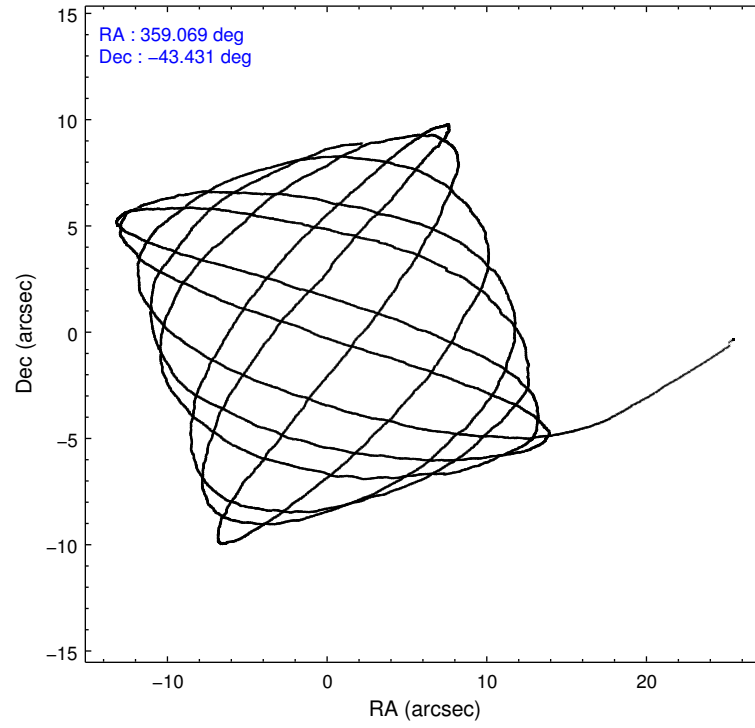
	ccd 2	ccd 3	ccd 6	ccd 7	ccd 8
level 1 events	28610	27513	34415	41037	73183
rejected events	23259	24387	27088	19631	28759
rejected %	81%	88%	78%	47%	39%

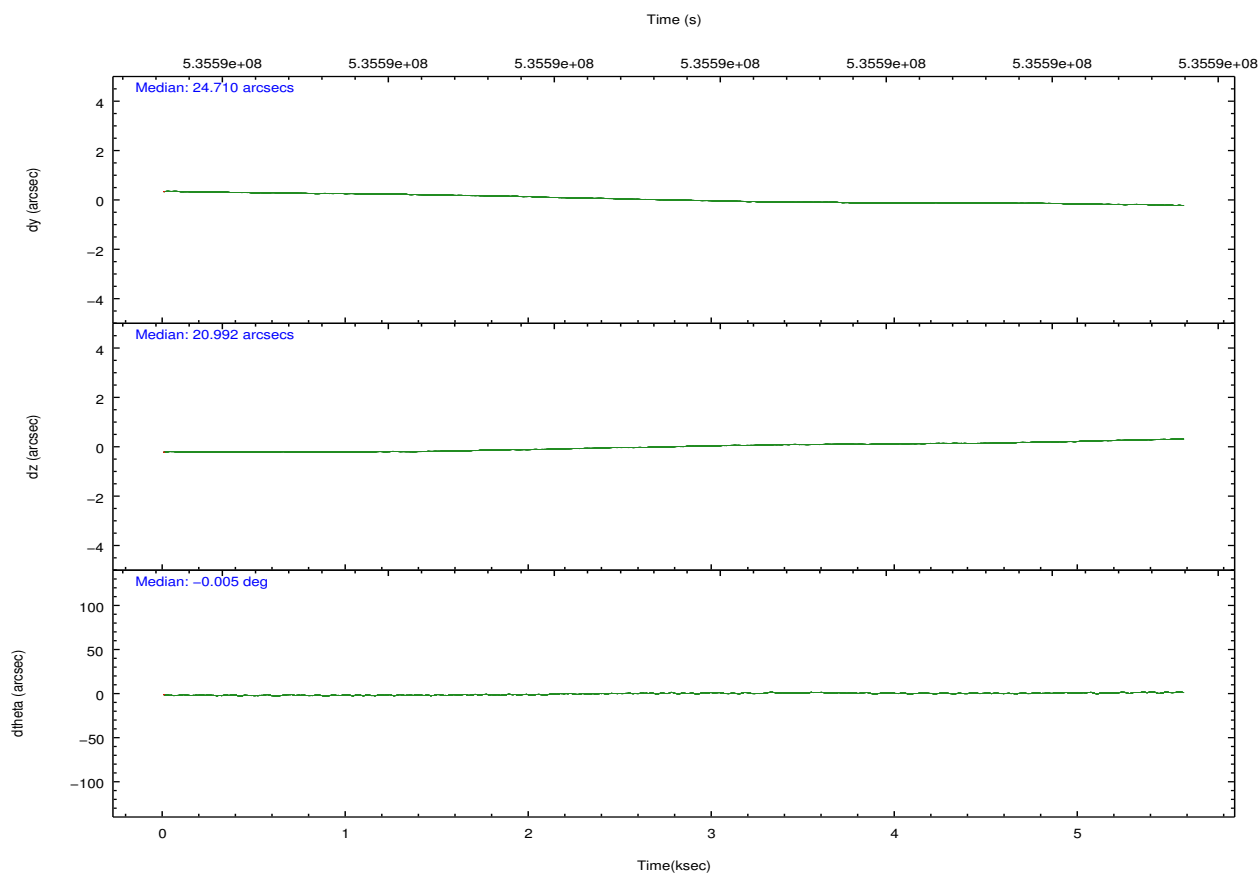
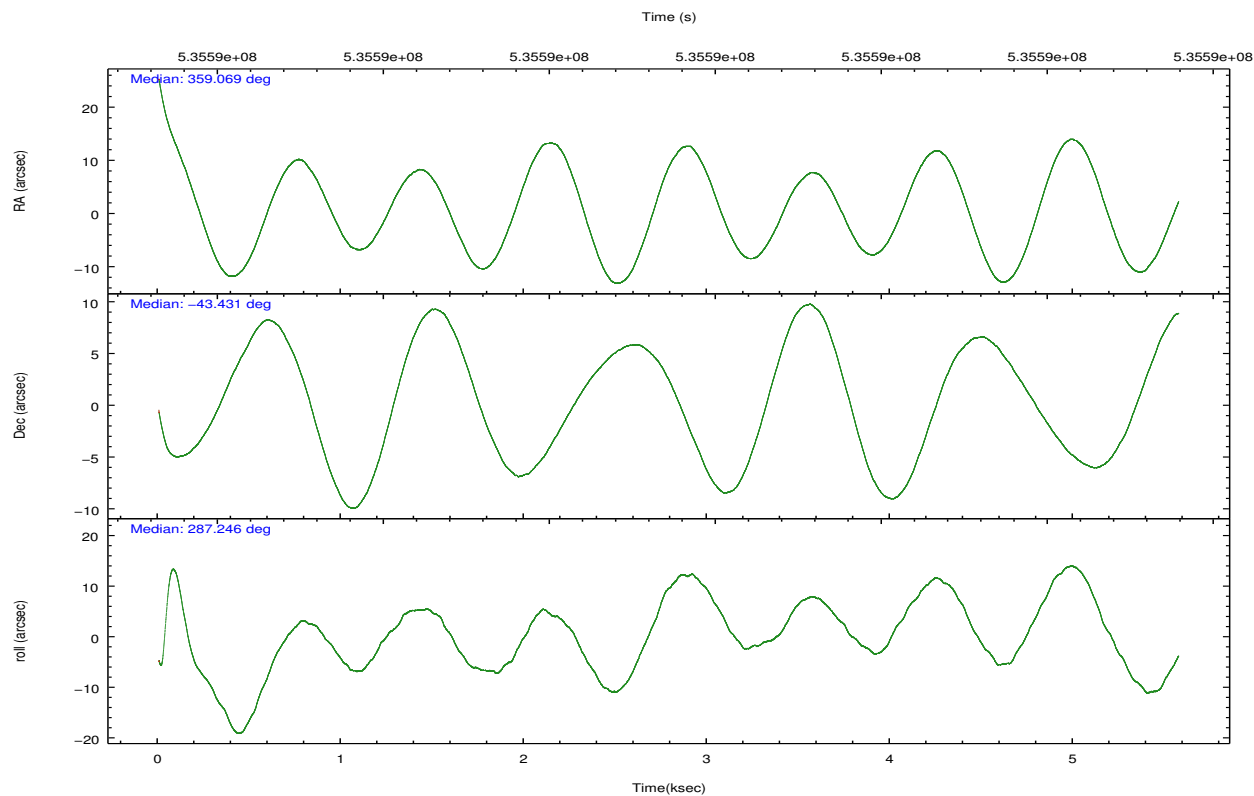
	ccd 2	ccd 3	ccd 6	ccd 7	ccd 8
grade 0 events	3206	1282	5056	2243	17602
	11%	4%	14%	5%	24%
grade 1 events	35	7	32	74	125
	0%	0%	0%	0%	0%
grade 2 events	886	662	974	4756	5117
	3%	2%	2%	11%	6%
grade 3 events	305	301	292	1666	8023
	1%	1%	0%	4%	10%
grade 4 events	362	292	300	1647	7306
	1%	1%	0%	4%	9%
grade 5 events	1011	1195	1220	3337	1960
	3%	4%	3%	8%	2%
grade 6 events	598	592	715	11114	6420
	2%	2%	2%	27%	8%
grade 7 events	22207	23182	25826	16200	26630
	77%	84%	75%	39%	36%

2.2 Compared Parameters

Parameter	Planned	Actual	Parameter	Planned	Actual
Instrument	ACIS	ACIS	Obspar format version number	7	7
Detector	ACIS-23678	ACIS-23678	Obspar file type	PREDICTED	ACTUAL
Grating	NONE	NONE	Obspar update status	NONE	UPDATED
Data mode	FAINT	FAINT	CCD I0 on	N	N
Observation mode	POINTING	POINTING	CCD I1 on	N	N
[deg] Pointing RA	359.041061	359.0691348927869	CCD I2 on	O2	Y
[deg] Pointing Dec	-43.412184	-43.43055406129566	CCD I3 on	O1	Y
[deg] Pointing Roll	287.071327	287.2471870229684	CCD S0 on	N	N
[mm] SIM focus pos	-0.684267	-0.6828225247311905	CCD S1 on	N	N
[mm] SIM defocus	0	0.001444936568705701	CCD S2 on	Y	Y
[mm] SIM translation stage pos	-190.132523	-190.1400660498719	CCD S3 on	Y	Y
[mm] SIM translation stage offset	0	0.00754346686406393	CCD S4 on	Y	Y
[s] Observation start time (MET)	535588818.184000	535587010.37843	CCD S5 on	N	N
Observation start date	2014-12-21T22:39:11	2014-12-21T22:10:10	Number of optional ACIS chips dropped	0	0
[s] Observation end time (MET)	535593518.184000	535594316.57884	On-chip summing requested	N	N
Observation end date	2014-12-21T23:57:31	2014-12-22T00:11:56	Subarray requested	NONE	NONE
Read mode	TIMED	TIMED	Alternating exposures requested	N	N
			[s] Primary exposure time	0.000000	3.1

2.3 Aspect



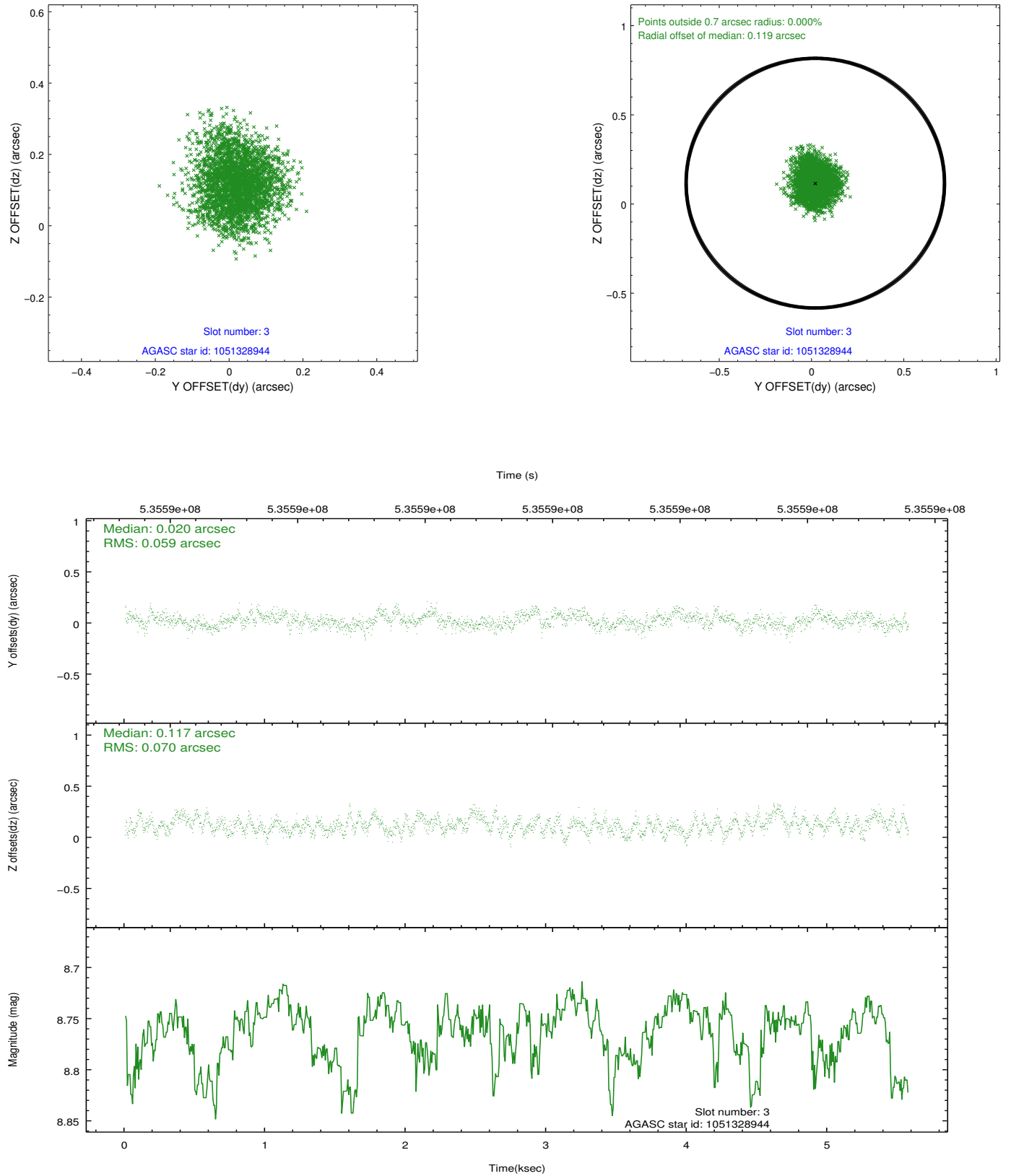


Slot Statistics

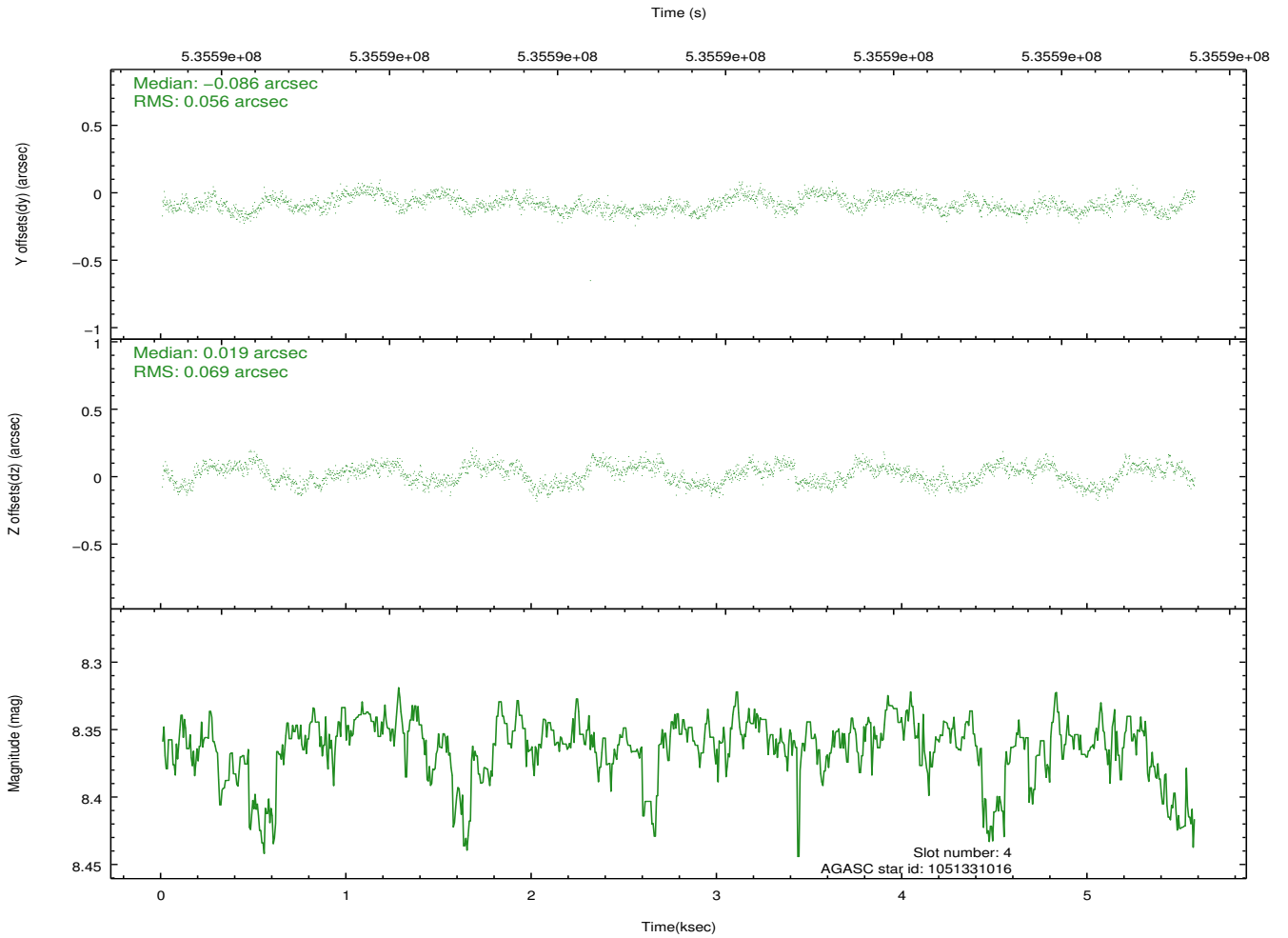
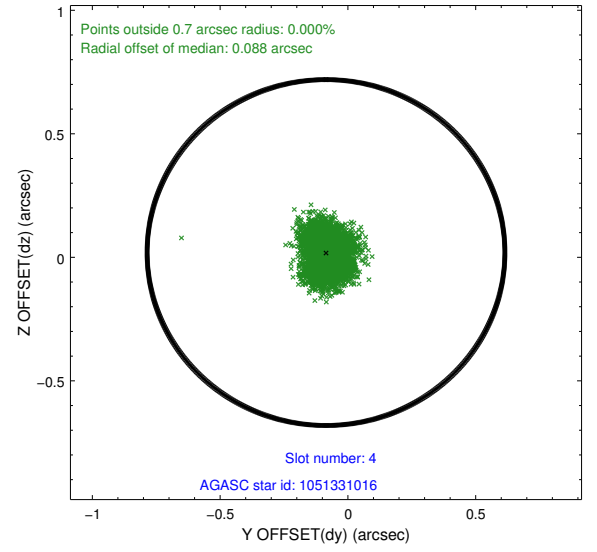
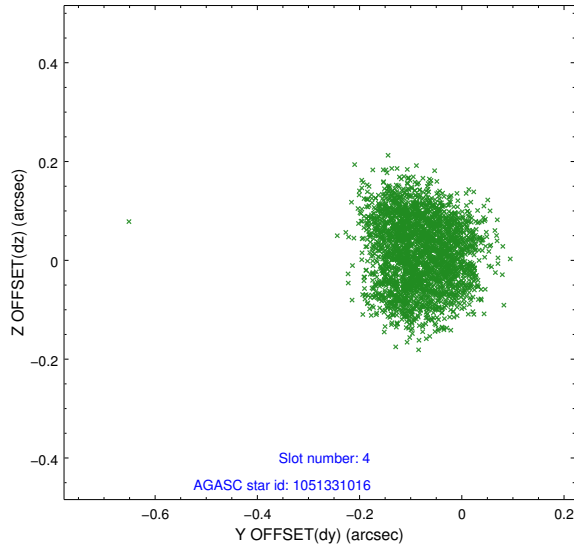
slot	status	used	id	mag	n_pts	med_dy	med_dz	dr1	dr2	ra	dec	mean_y	mean_z
0	FID		ACIS-S-1	7.13	1360	-0.000	-0.073	0.010	0.016	0.000000	0.000000	918.04	-1738.23
1	FID		ACIS-S-4	7.14	1360	0.278	0.056	0.007	0.014	0.000000	0.000000	2136.32	164.93
2	FID		ACIS-S-5	7.15	1359	-0.304	0.030	0.008	0.014	0.000000	0.000000	-1829.76	159.73
3	GUIDE	used	1051328944	8.76	2719	0.020	0.117	0.099	0.155	359.000213	-42.848164	-1971.65	494.55
4	GUIDE	used	1051331016	8.36	2718	-0.086	0.019	0.098	0.143	359.355189	-43.034220	-1057.04	1189.12
5	GUIDE	used	1051331624	9.84	2637	0.058	0.136	0.195	0.328	358.523921	-43.556896	106.16	-1443.18
6	GUIDE	used	1051333208	8.44	2718	0.187	-0.082	0.089	0.142	359.221561	-43.337645	-115.21	530.30
7	GUIDE	used	986846280	9.21	2714	-0.184	-0.182	0.121	0.195	0.061384	-43.607067	1467.52	2332.36

2.4 Star Slots

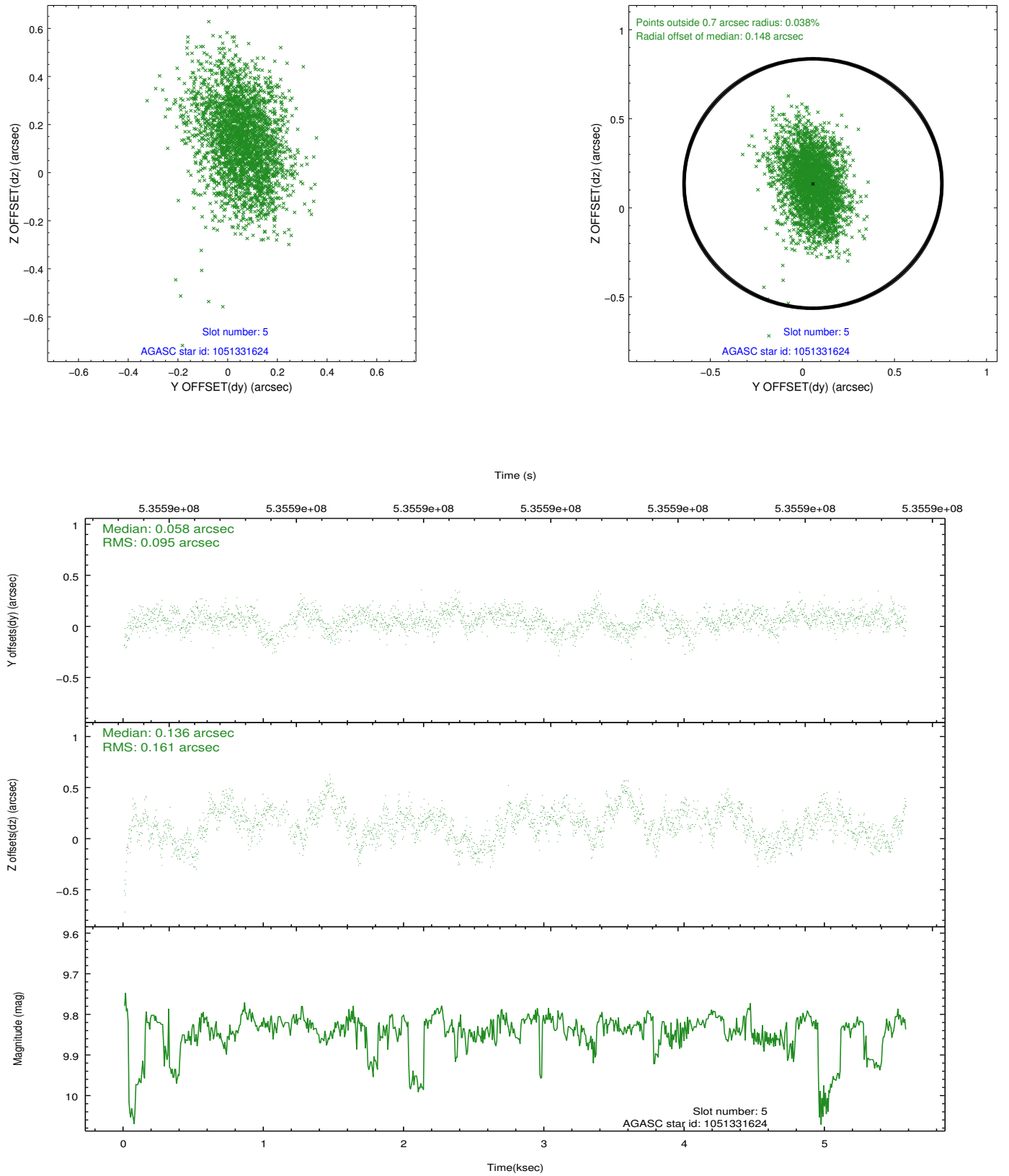
2.4.1 Slot 3



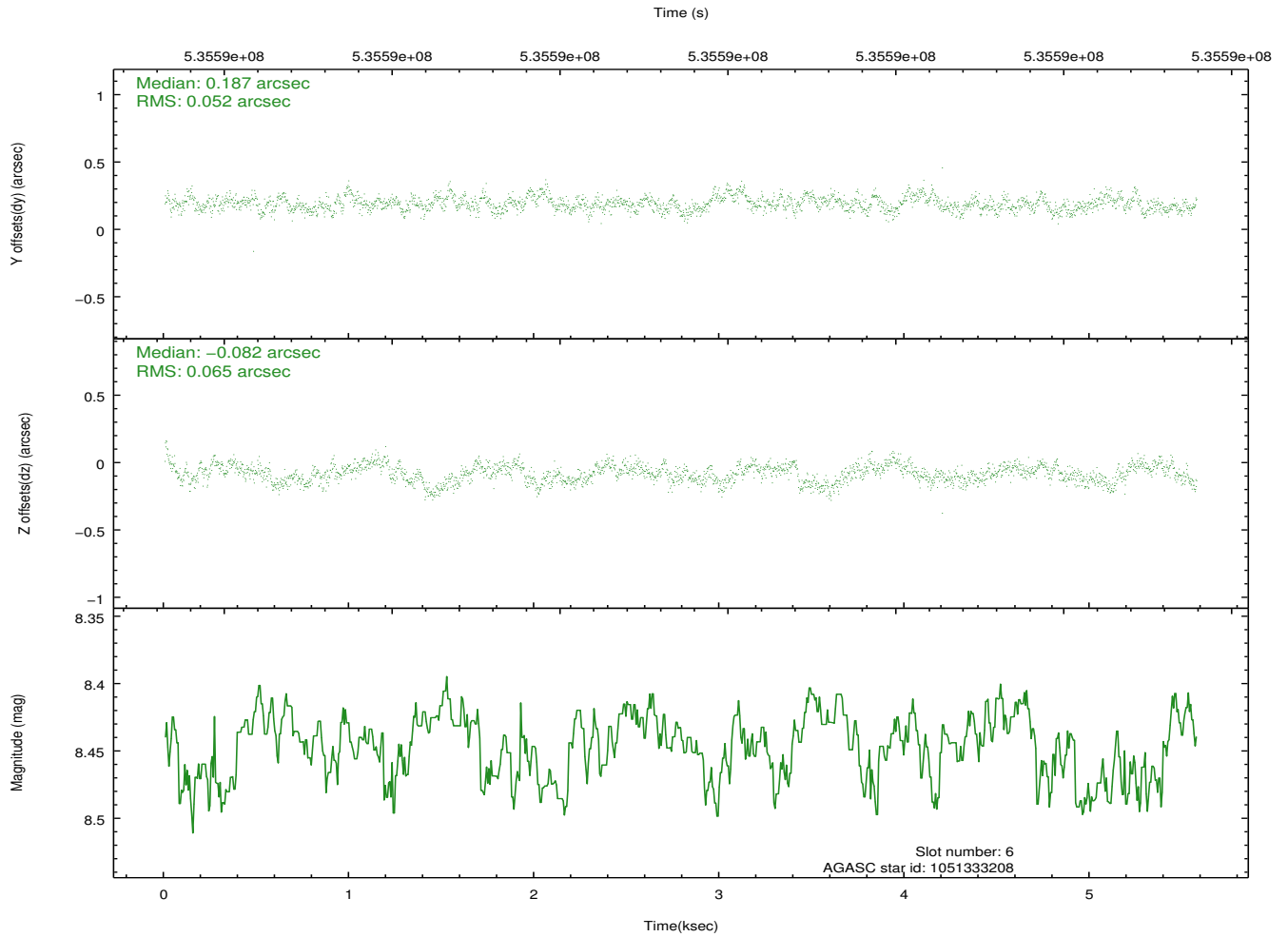
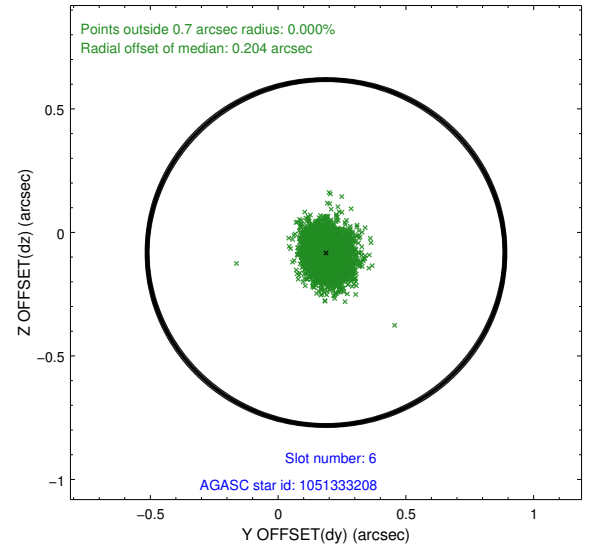
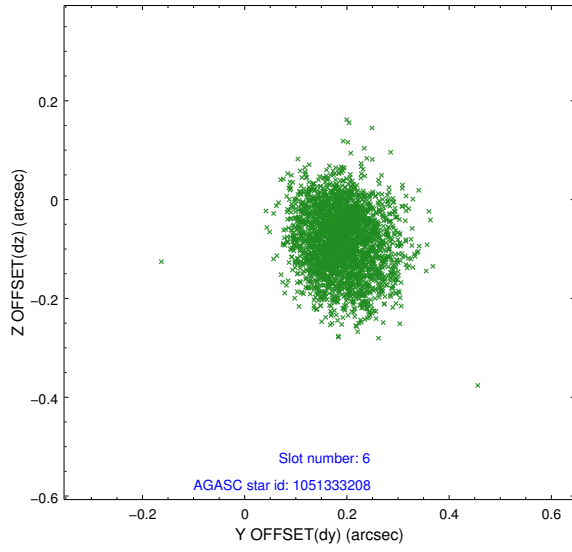
2.4.2 Slot 4



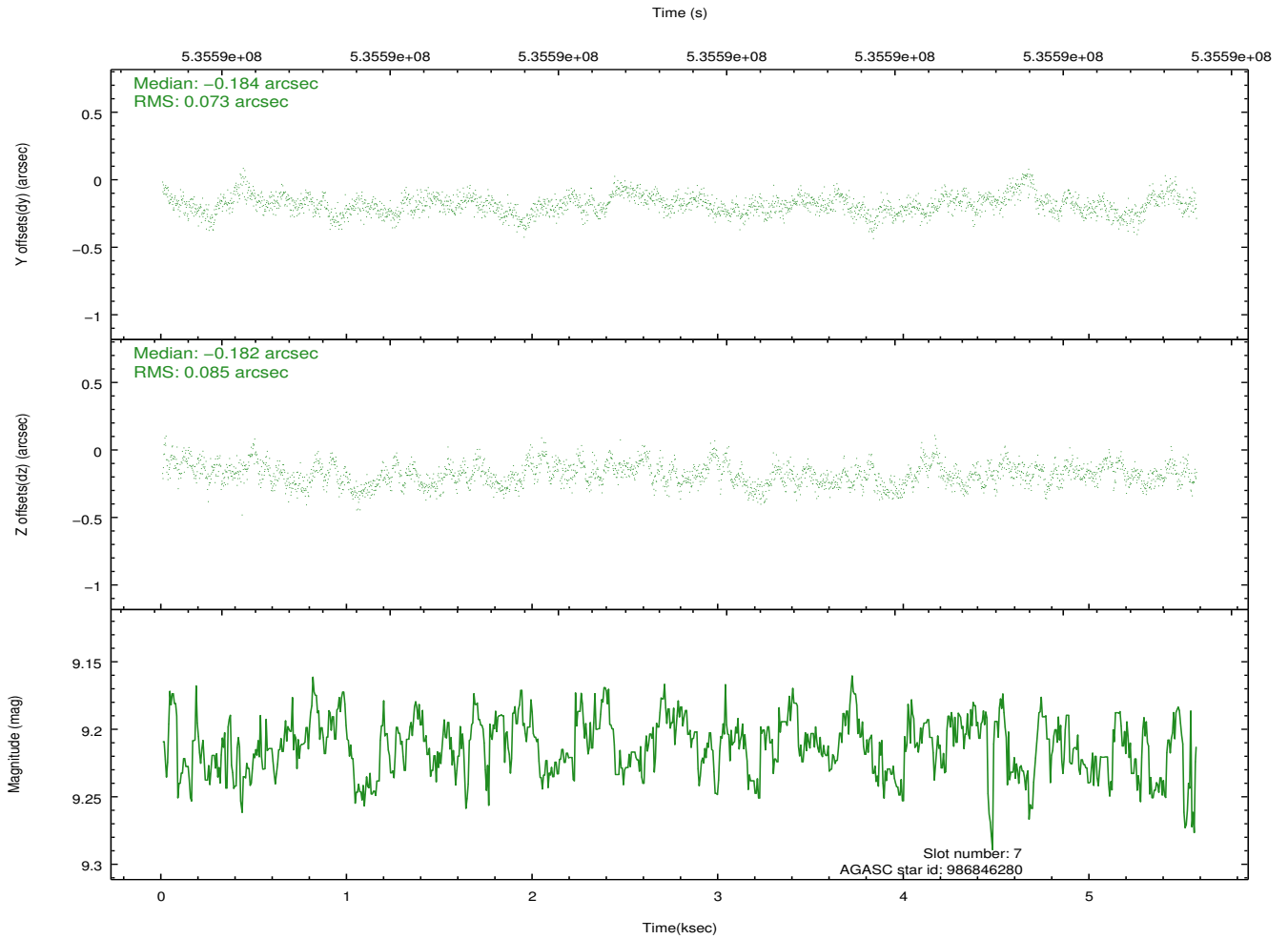
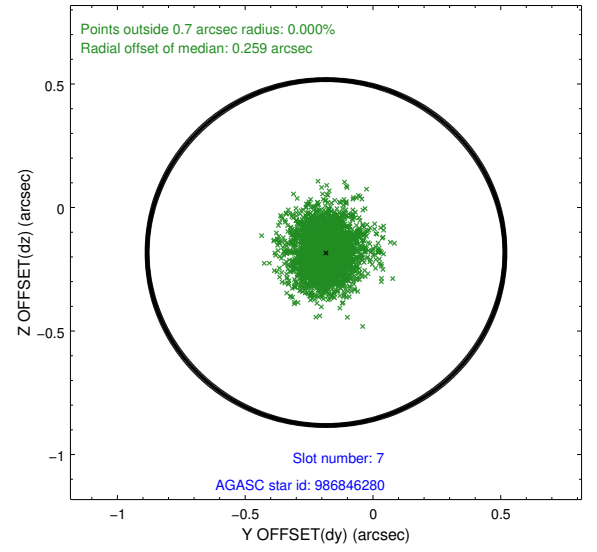
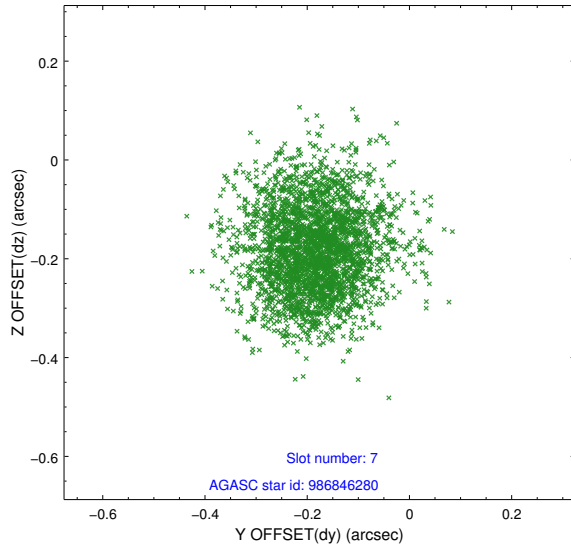
2.4.3 Slot 5



2.4.4 Slot 6

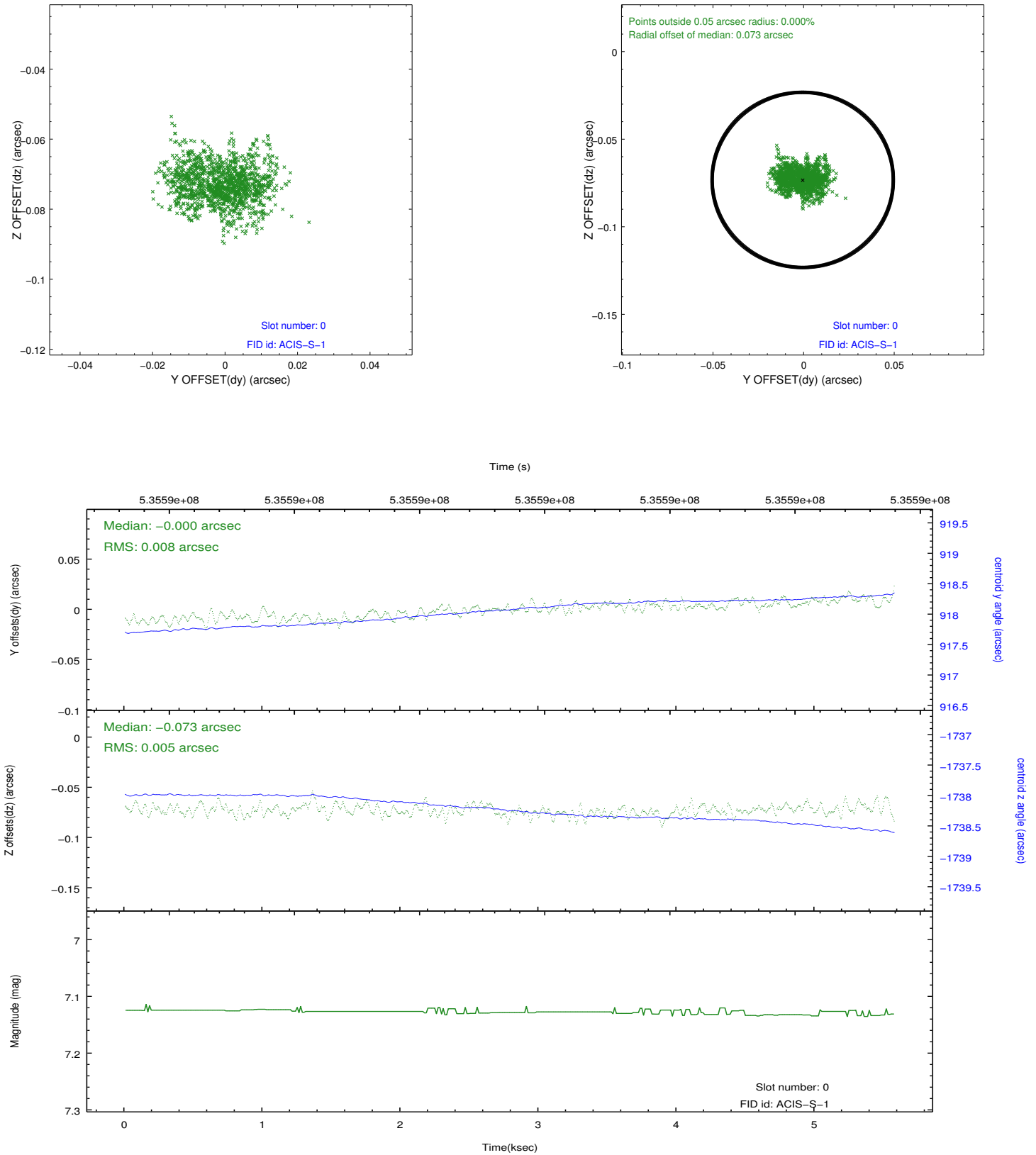


2.4.5 Slot 7

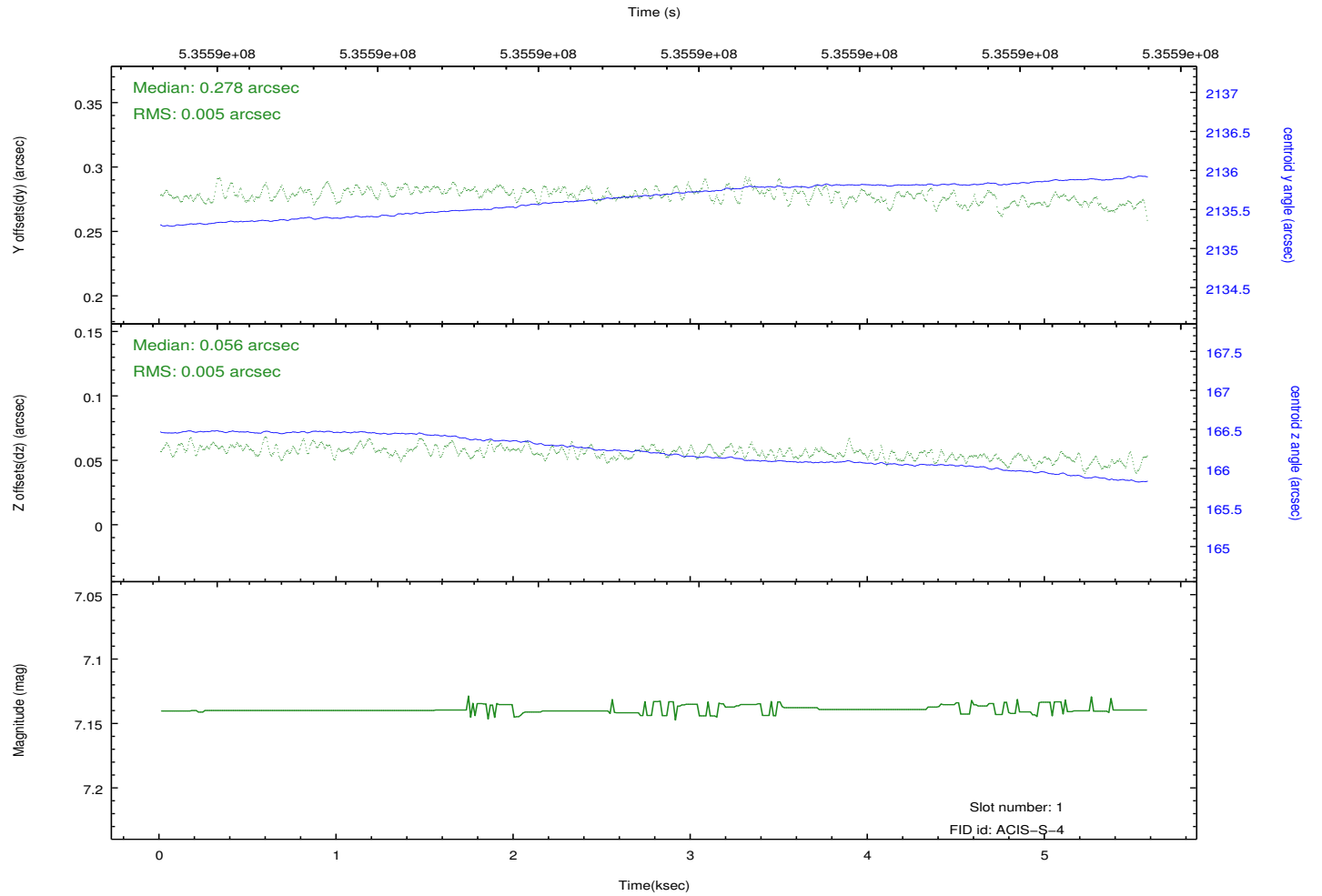
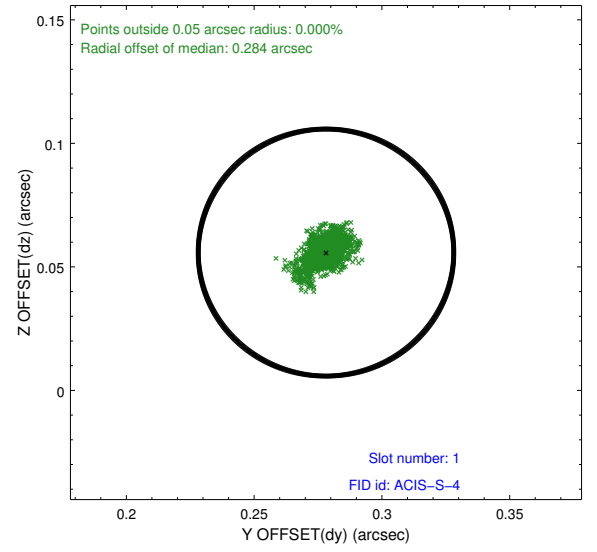
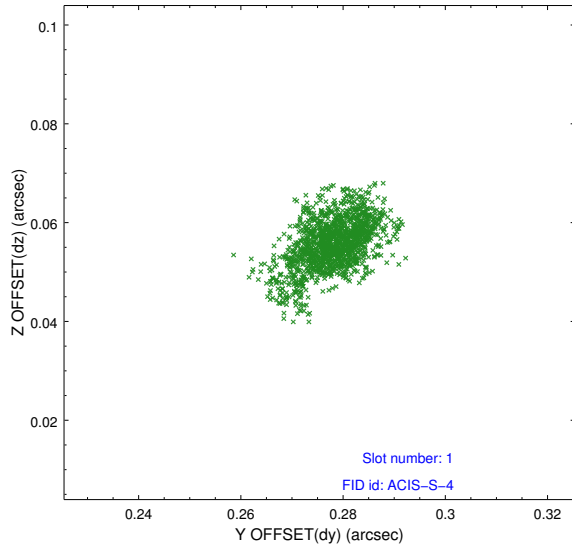


2.5 FID Slots

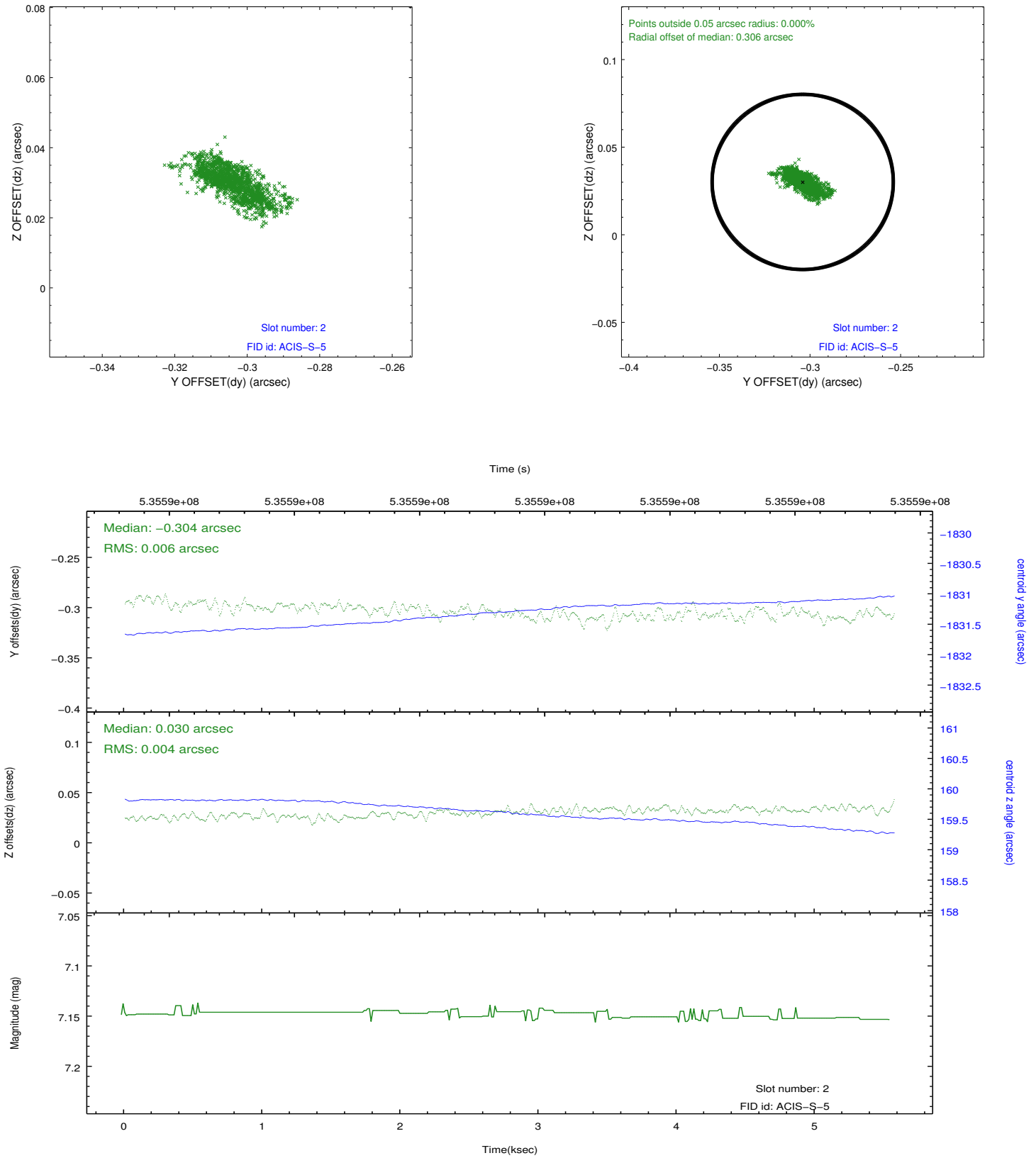
2.5.1 Slot 0



2.5.2 Slot 1



2.5.3 Slot 2



A Summary

A.1 Status

V&V Scientist	Jen Lauer
V&V Date (YYYY-MM-DD)	2014.12.22
V&V Edition	1
V&V Disposition and Status	OK
V&V Charge Time	4.7633759049773

A.2 Comments