

V&V Reference Report

L2 ASCDS Version : 10.4.3.1

Observation 16969 - L2 Version 1
Chandra X-Ray Center

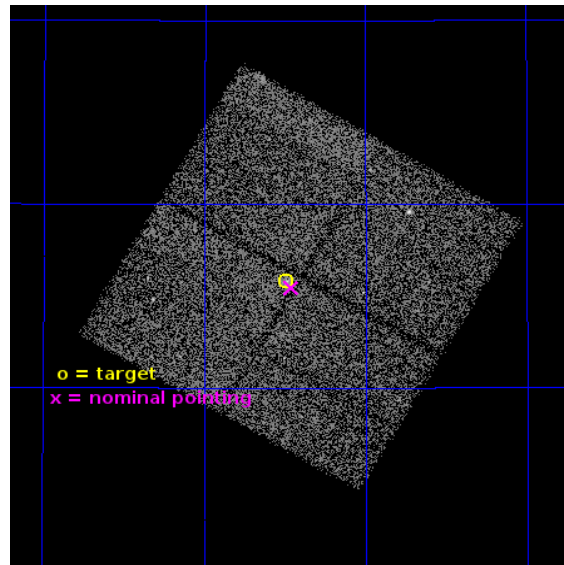
L2 Processing Date : Jun 11 2016

Contents

1	Front	2
2	OBI	3
2.1	OBI	3
2.1.1	Images	3
2.1.2	Bias	3
2.1.3	Parameters	4
2.1.4	Events	4
2.2	Compared Parameters	5
2.3	Aspect	6
2.4	Star Slots	9
2.4.1	Slot 3	9
2.4.2	Slot 4	10
2.4.3	Slot 5	11
2.4.4	Slot 6	12
2.4.5	Slot 7	13
2.5	FID Slots	14
2.5.1	Slot 0	14
2.5.2	Slot 1	15
2.5.3	Slot 2	16
A	Summary	17
A.1	Status	17
A.2	Comments	17

1 Front

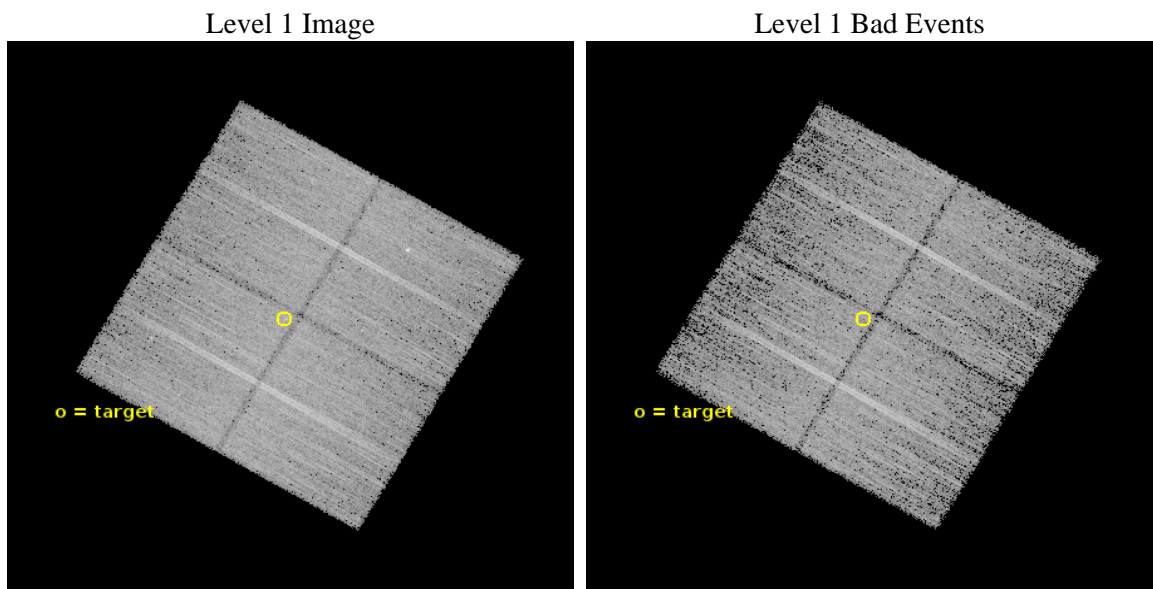
seq_num	601162	Sequence number
obs_id	16969	Observation id
title	AN EFFICIENT SURVEY FOR GLOBULAR CLUSTER BLACK HOLES WITHIN 20 MPC	
observer	Thomas Maccarone	Principal investigator
object	NGC 5866	Source name
dtcycle	0	
cycle	P	events from which exps? Prim/Second/Both
ra_targ	226.623333	Observer's specified target RA [deg]
dec_targ	55.763306	Observer's specified target Dec [deg]
ra_nom	226.61504688539	Nominal RA [deg]
dec_nom	55.757655171405	Nominal Dec [deg]
roll_nom	210.22559406019	Nominal Roll [deg]
revision	1	Processing version of data
ontime	20084.900154591	Sum of GTIs [s]
livetime	19822.476147782	Livetime [s]
ontime0	20084.900154591	Sum of GTIs [s]
ontime1	20084.900154591	Sum of GTIs [s]
ontime2	20084.900154591	Sum of GTIs [s]
ontime3	20084.900154591	Sum of GTIs [s]
l2events	51349	Number of level 2 events



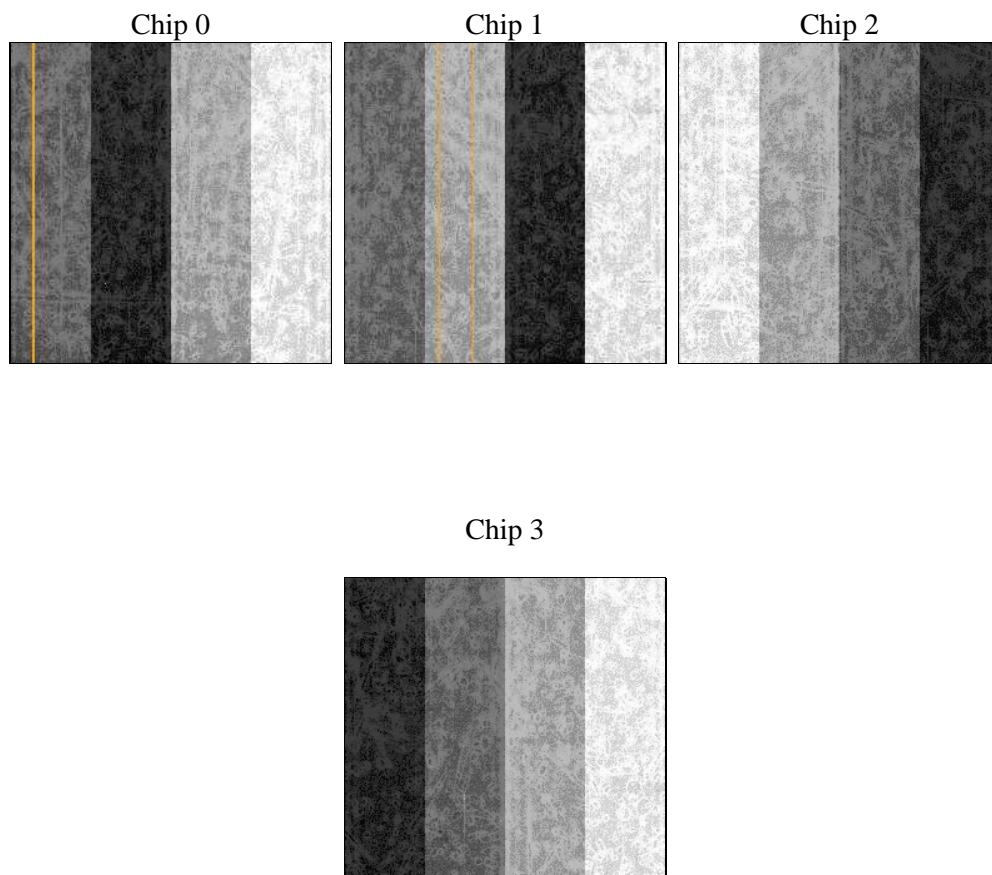
2 OBI

2.1 OBI

2.1.1 Images



2.1.2 Bias



2.1.3 Parameters

obi_num	0	Obi number	sched_exp_time	20000.000000	[s] Scheduled observation exposure time
ascdsver	10.4.3.1	Processing system revision	ontime	20084.900154591	Sum of GTIs [s]
caldsver	4.7.2	 	ontime0	20084.900154591	Sum of GTIs [s]
date	2016-06-11T16:09:28	Date and time of file creation	ontime1	20084.900154591	Sum of GTIs [s]
revision	1	Processing version of data	ontime2	20084.900154591	Sum of GTIs [s]
			ontime3	20084.900154591	Sum of GTIs [s]
			l1events	510394	Number of level 1 events

2.1.4 Events

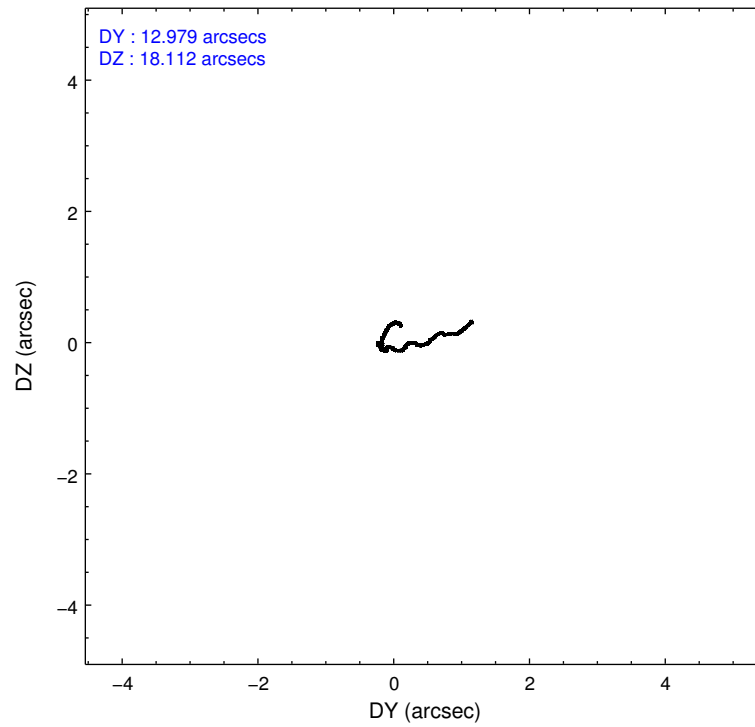
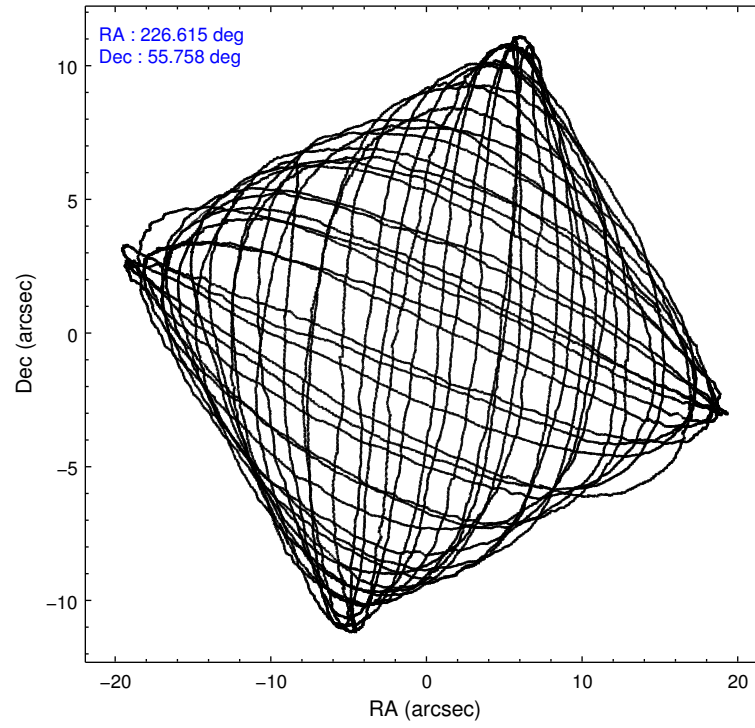
	ccd 0	ccd 1	ccd 2	ccd 3
level 1 events	123250	122534	136059	128551
rejected events	107747	106011	121133	113697
rejected %	87%	86%	89%	88%

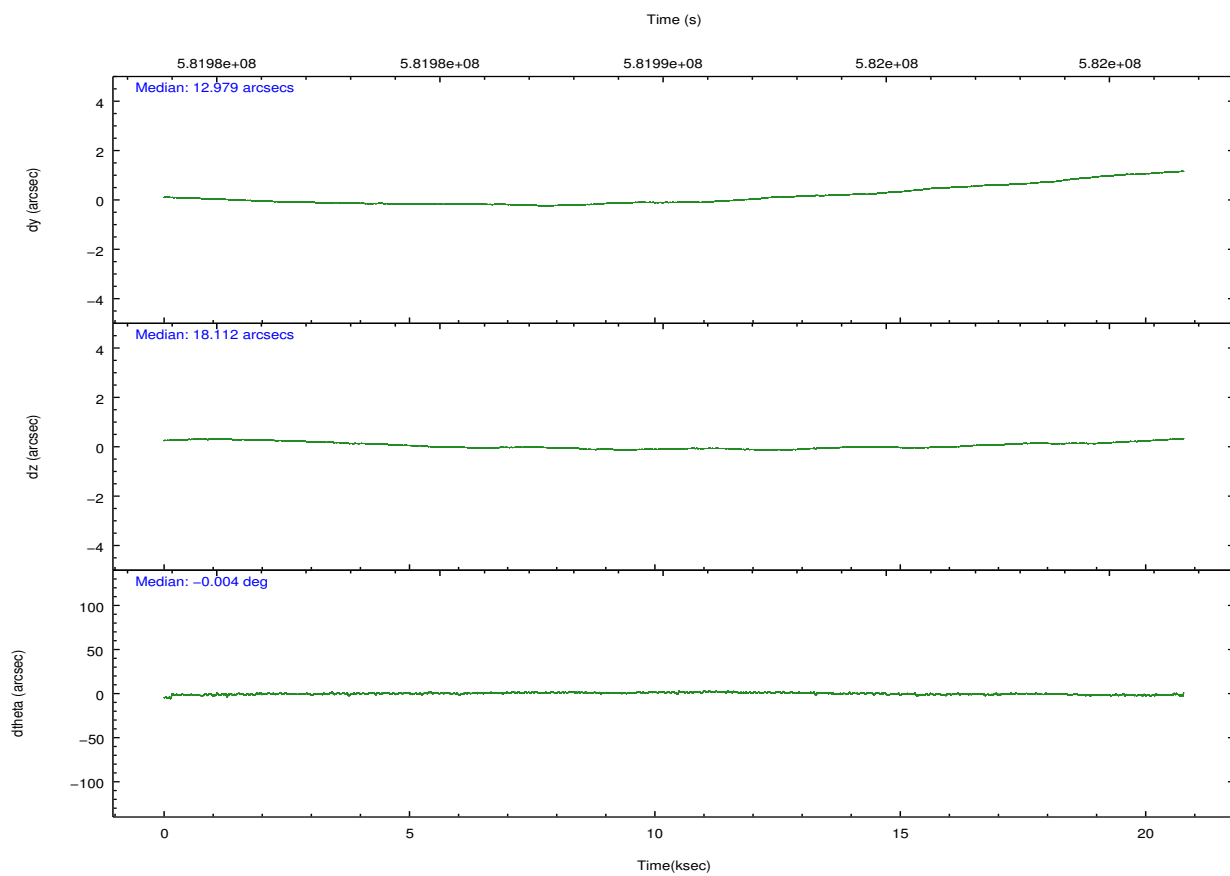
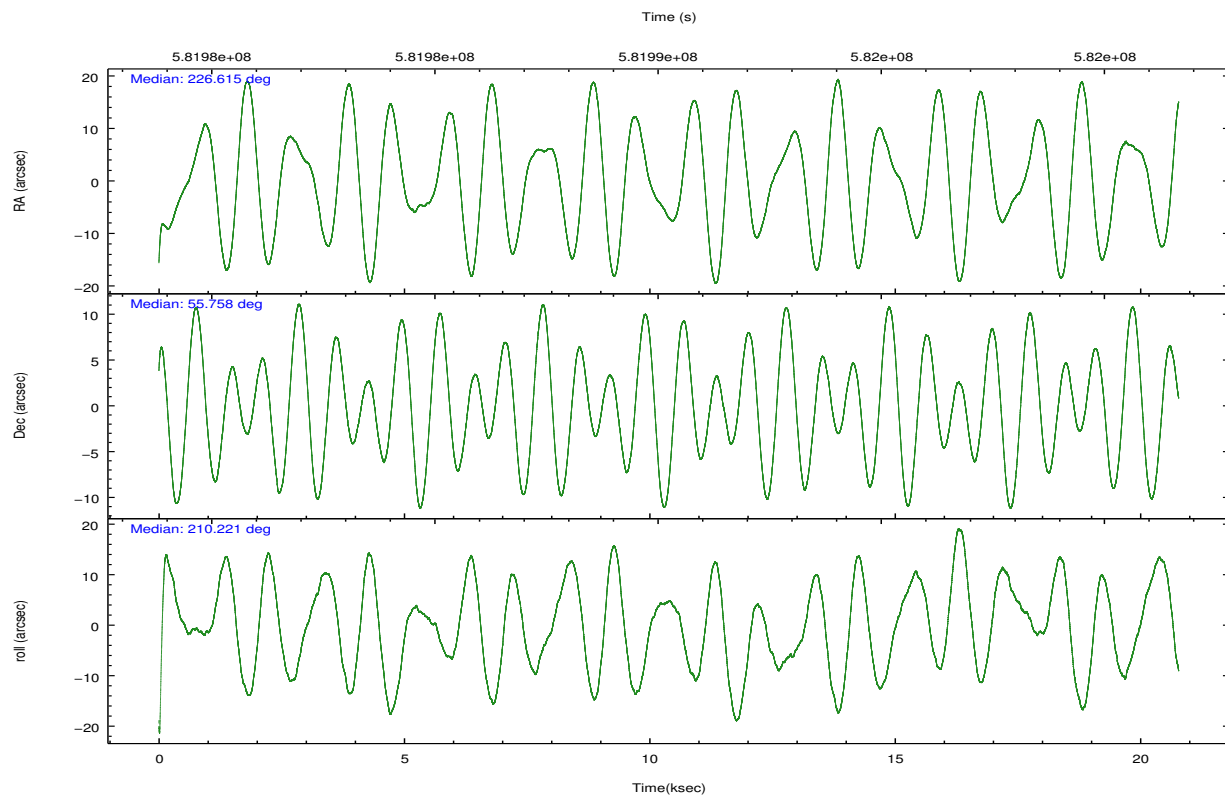
	ccd 0	ccd 1	ccd 2	ccd 3
grade 0 events	5626	5714	5252	5530
	4%	4%	3%	4%
grade 1 events	78	65	89	99
	0%	0%	0%	0%
grade 2 events	3912	4172	3749	3271
	3%	3%	2%	2%
grade 3 events	1582	1628	1457	1554
	1%	1%	1%	1%
grade 4 events	1441	1507	1537	1565
	1%	1%	1%	1%
grade 5 events	5878	6223	5468	6493
	4%	5%	4%	5%
grade 6 events	2944	3502	2932	2938
	2%	2%	2%	2%
grade 7 events	101789	99723	115575	107101
	82%	81%	84%	83%

2.2 Compared Parameters

Parameter	Planned	Actual	Parameter	Planned	Actual
Instrument	ACIS	ACIS	Obspar format version number	7	7
Detector	ACIS-0123	ACIS-0123	Obspar file type	PREDICTED	ACTUAL
Grating	NONE	NONE	Obspar update status	NONE	UPDATED
Data mode	FAINT	FAINT	Number of optional ACIS chips dropped	0	0
Observation mode	POINTING	POINTING	On-chip summing requested	N	N
[deg] Pointing RA	226.639319	226.6150468853864	Subarray requested	NONE	NONE
[deg] Pointing Dec	55.781665	55.75765517140458	Alternating exposures requested	N	N
[deg] Pointing Roll	209.996871	210.2255940601916	[s] Primary exposure time	0.000000	3.1
[mm] SIM focus pos	-0.782348	-0.7809083437167272			
[mm] SIM defocus	0	0.001439871863259334			
[mm] SIM translation stage pos	-233.592463	-233.5874344608287			
[mm] SIM translation stage offset	0	-0.005018542100998502			
[s] Observation start time (MET)	581980614.184000	581979123.08557			
Observation start date	2016-06-10T21:15:46	2016-06-10T20:52:03			
[s] Observation end time (MET)	582000614.184000	582001992.88688			
Observation end date	2016-06-11T02:49:06	2016-06-11T03:13:12			
Read mode	TIMED	TIMED			

2.3 Aspect



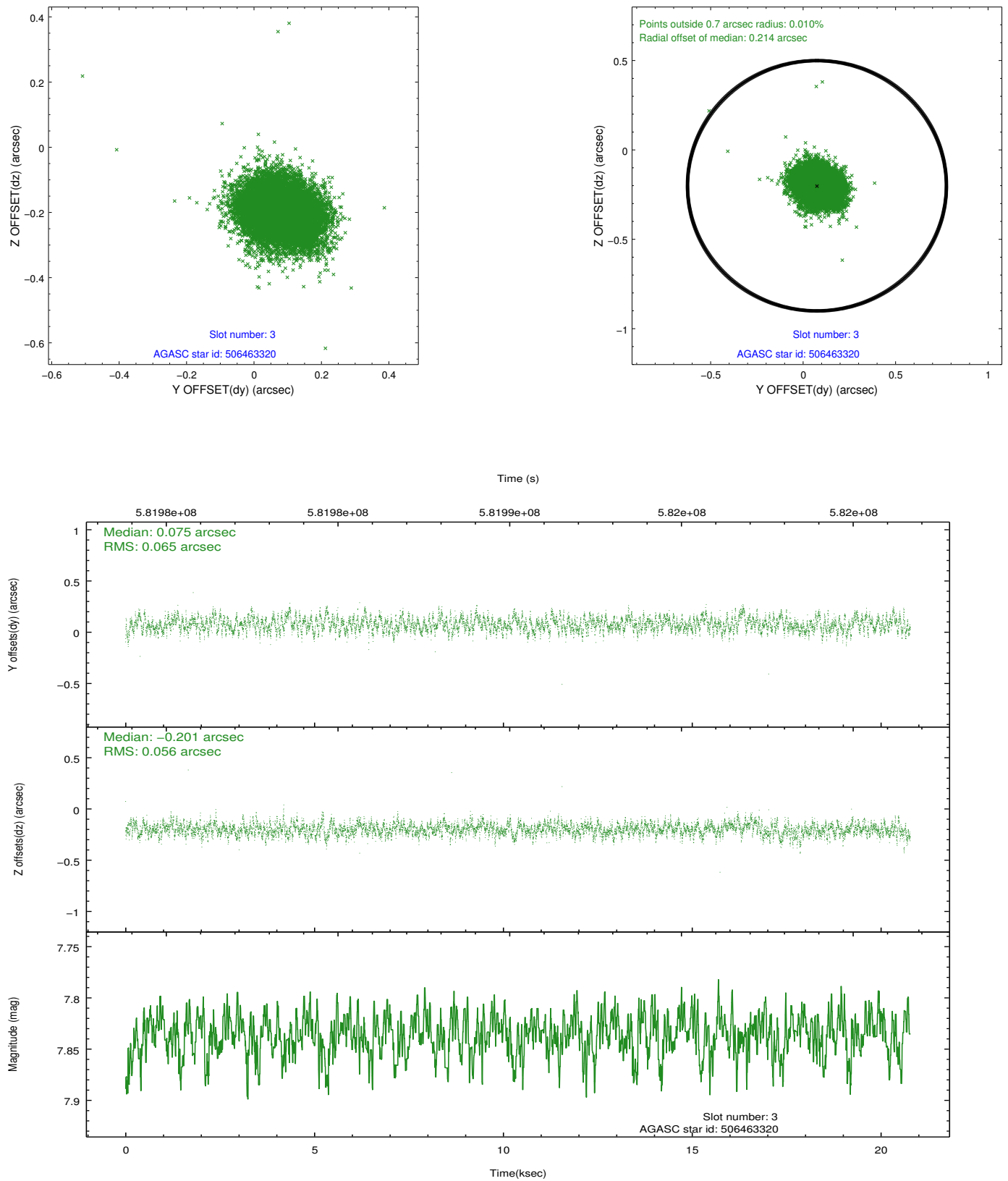


Slot Statistics

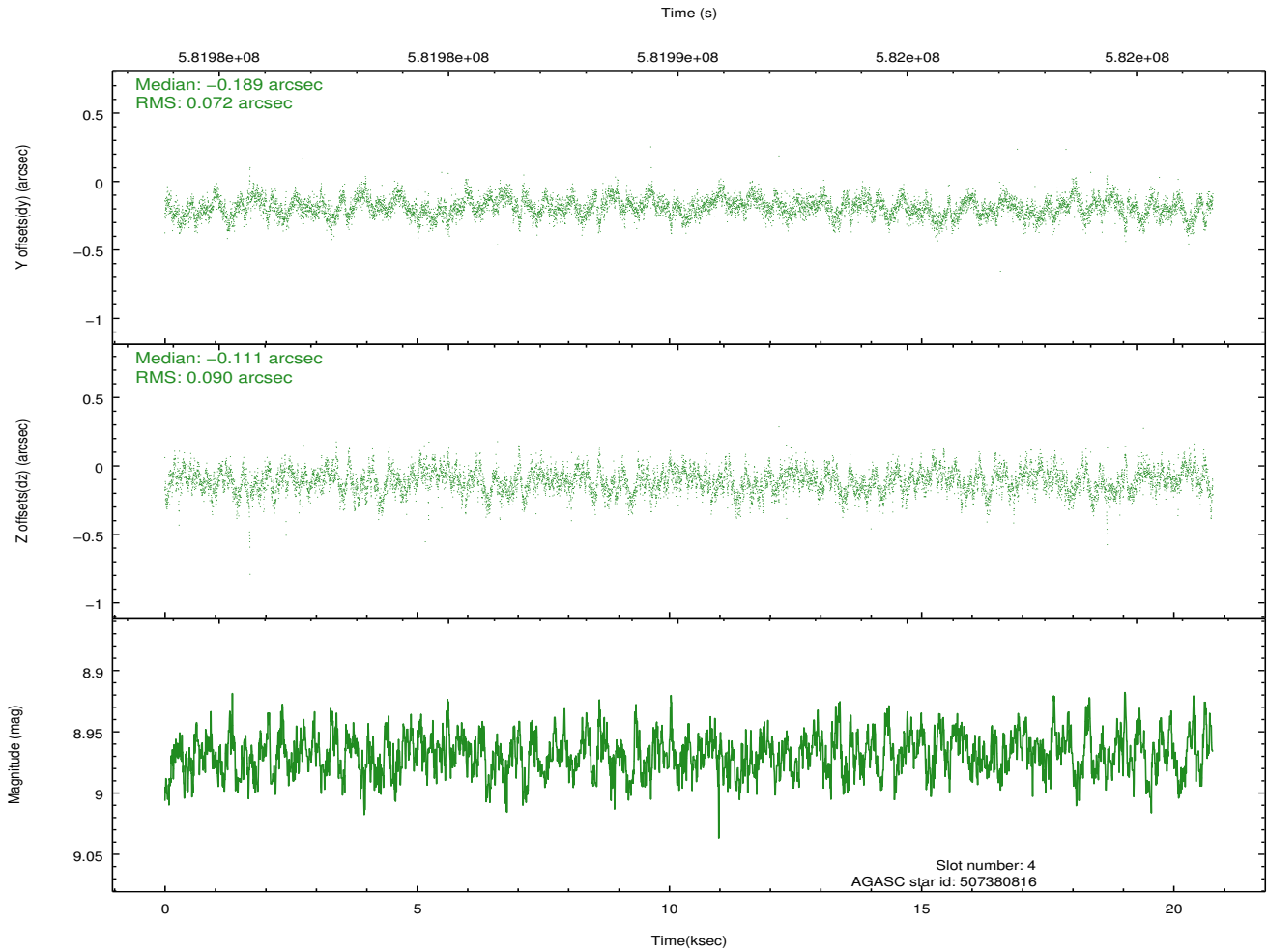
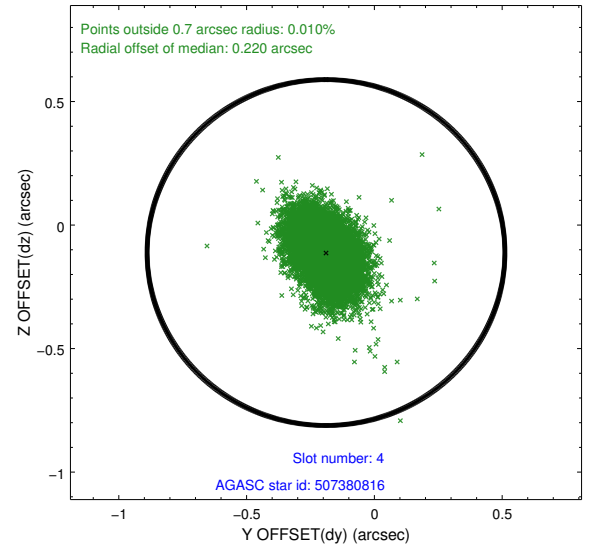
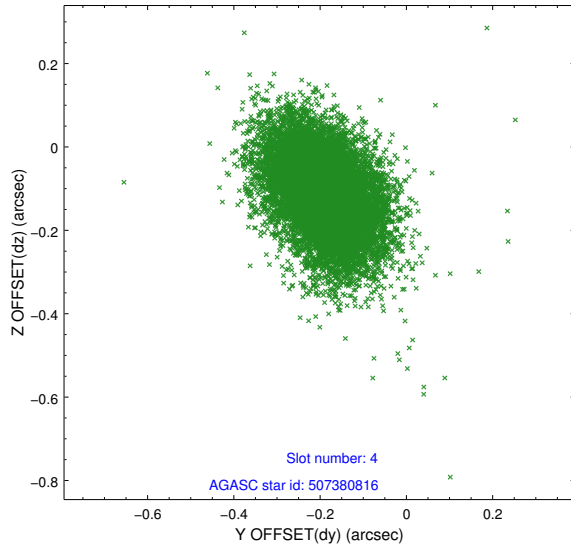
slot	status	used	id	mag	n_pts	med_dy	med_dz	dr1	dr2	ra	dec	mean_y	mean_z
0	FID		ACIS-I-1	7.23	5068	-0.041	-0.021	0.012	0.023	0.000000	0.000000	926.34	-841.84
1	FID		ACIS-I-4	7.20	5068	0.373	0.058	0.011	0.017	0.000000	0.000000	2146.84	1057.99
2	FID		ACIS-I-5	7.24	5068	-0.431	0.034	0.009	0.016	0.000000	0.000000	-1821.88	1055.89
3	GUIDE	used	506463320	7.84	10134	0.075	-0.201	0.091	0.143	226.349027	55.677313	697.65	29.19
4	GUIDE	used	507380816	8.97	10128	-0.189	-0.111	0.121	0.200	226.866183	55.265818	524.76	1839.59
5	GUIDE	used	507382224	8.44	10134	0.010	-0.088	0.106	0.172	227.706518	55.422449	-1250.24	2195.25
6	GUIDE	used	506465640	6.69	10137	0.058	0.212	0.083	0.137	225.840137	56.035085	931.92	-1599.87
7	GUIDE	used	507381208	9.19	10125	0.046	0.188	0.123	0.211	228.099016	55.627478	-2305.63	1933.06

2.4 Star Slots

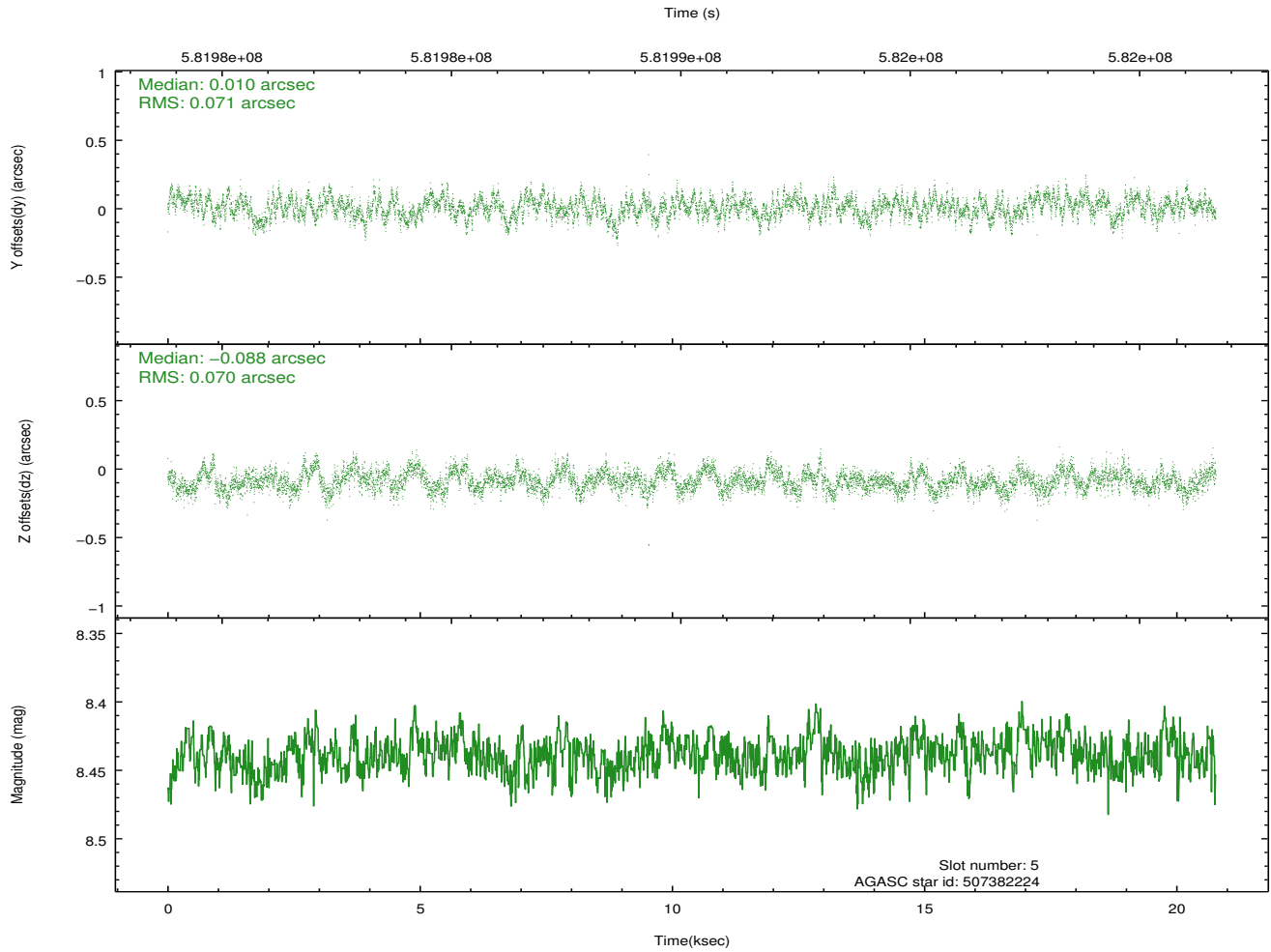
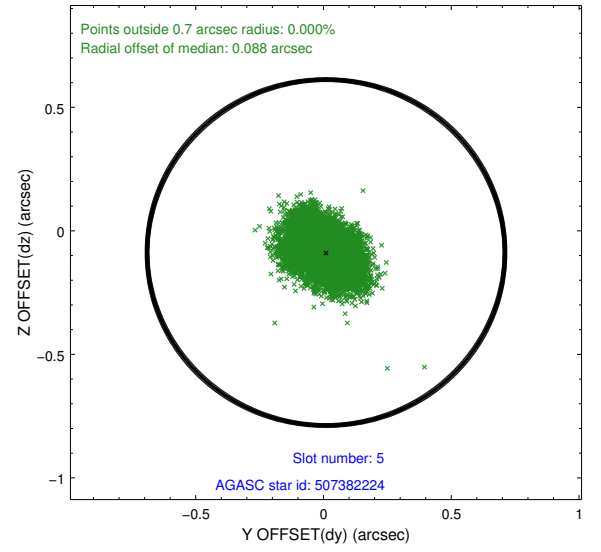
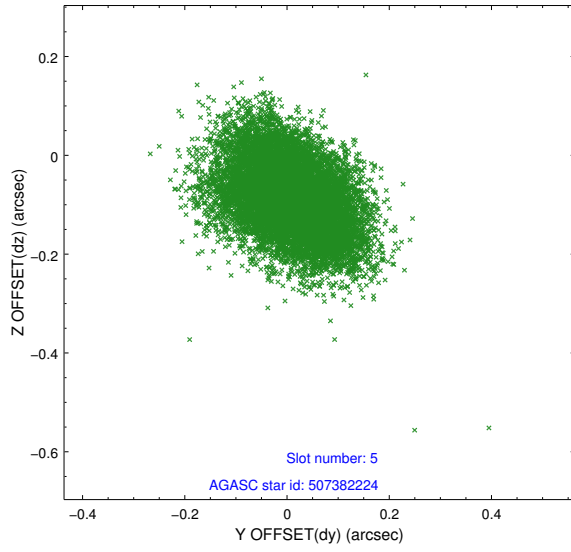
2.4.1 Slot 3



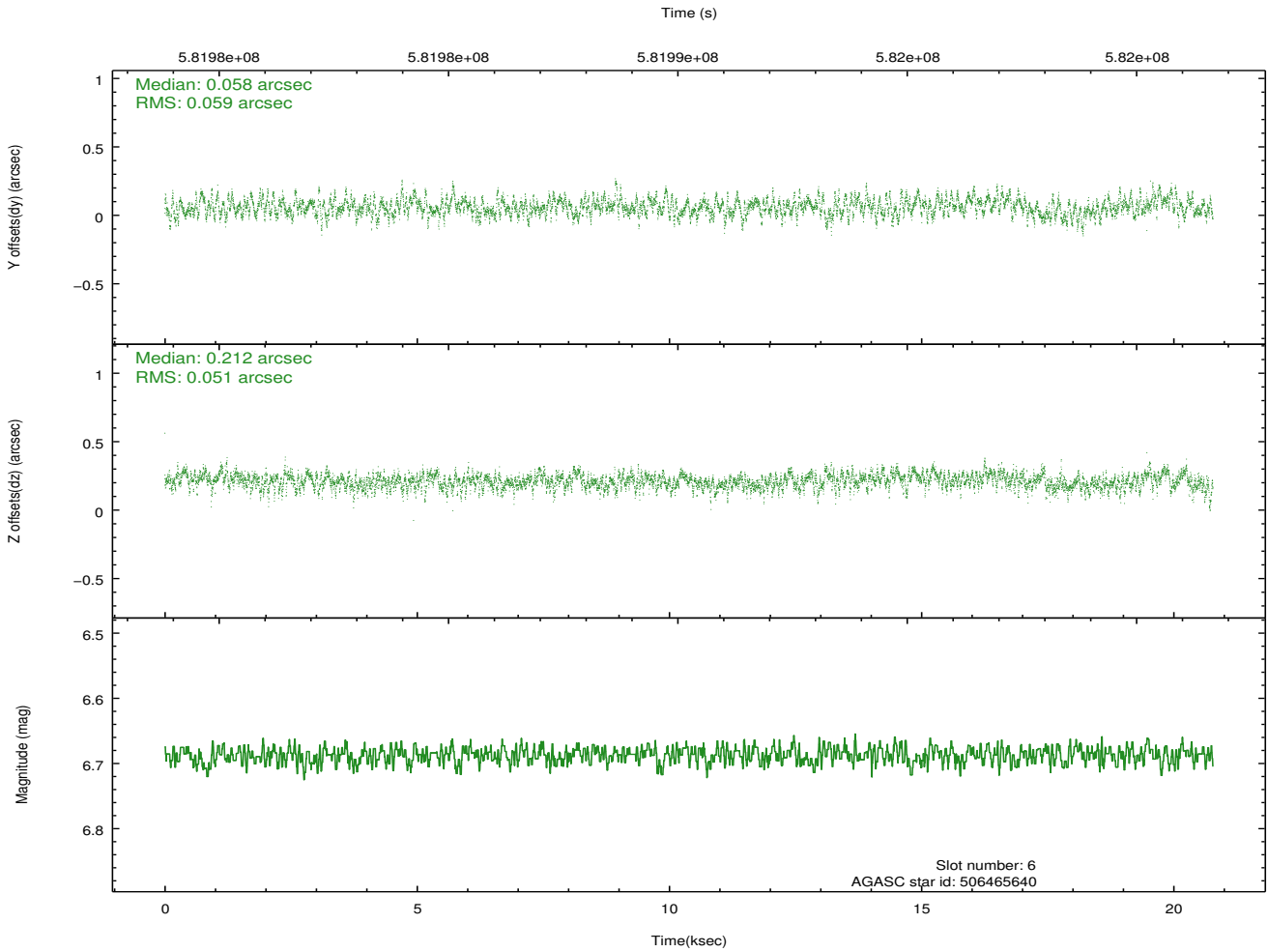
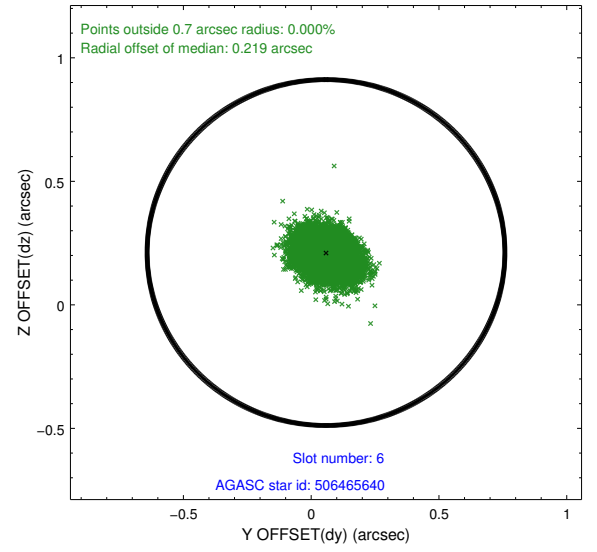
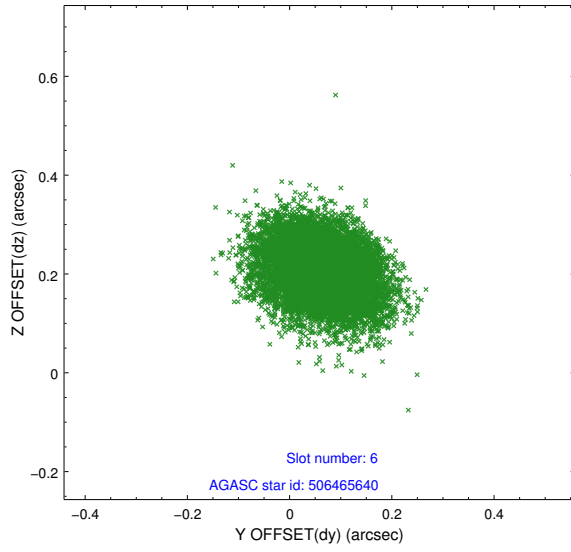
2.4.2 Slot 4



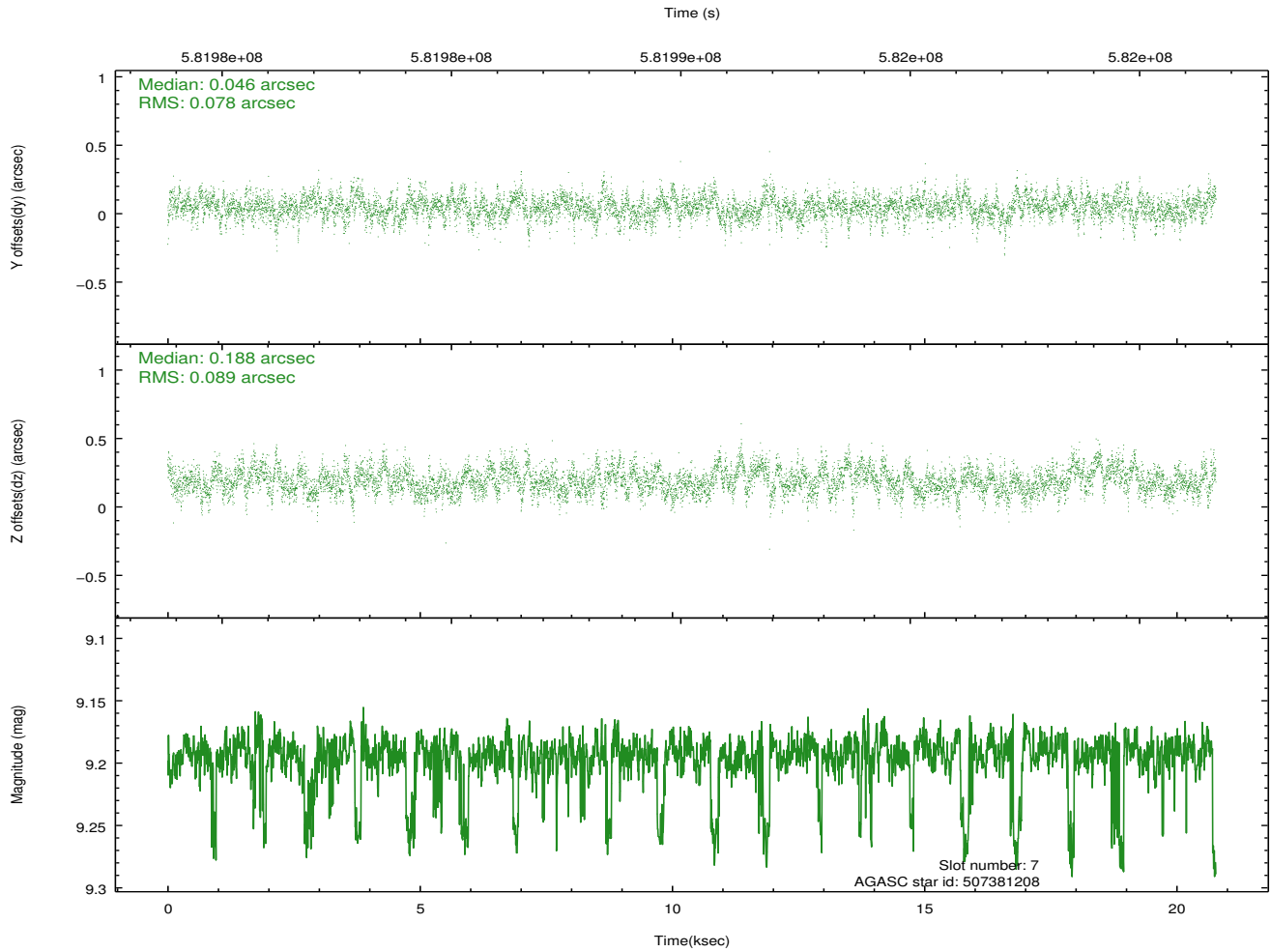
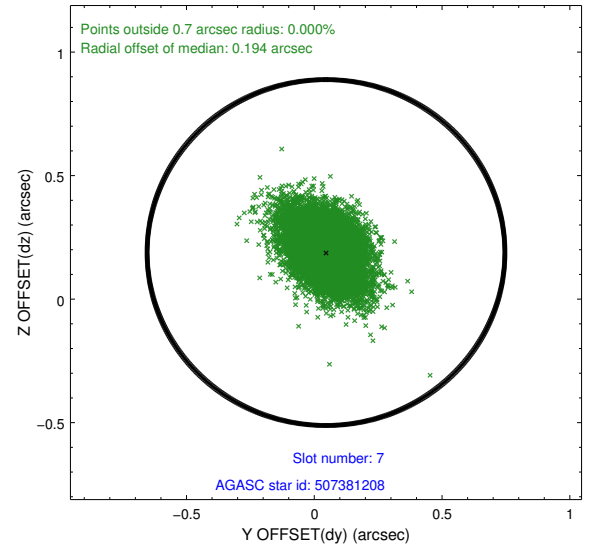
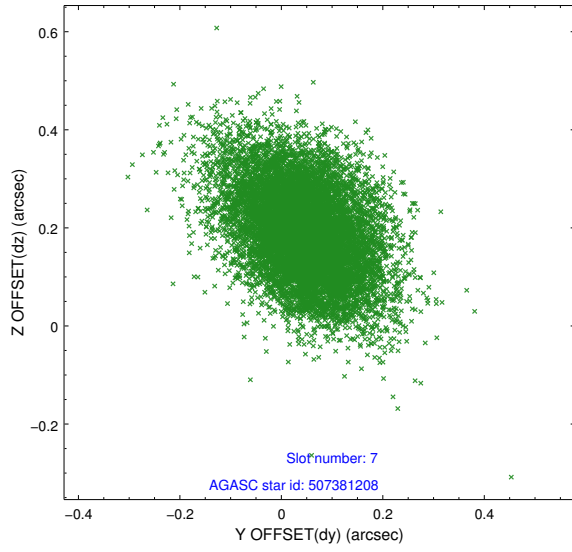
2.4.3 Slot 5



2.4.4 Slot 6

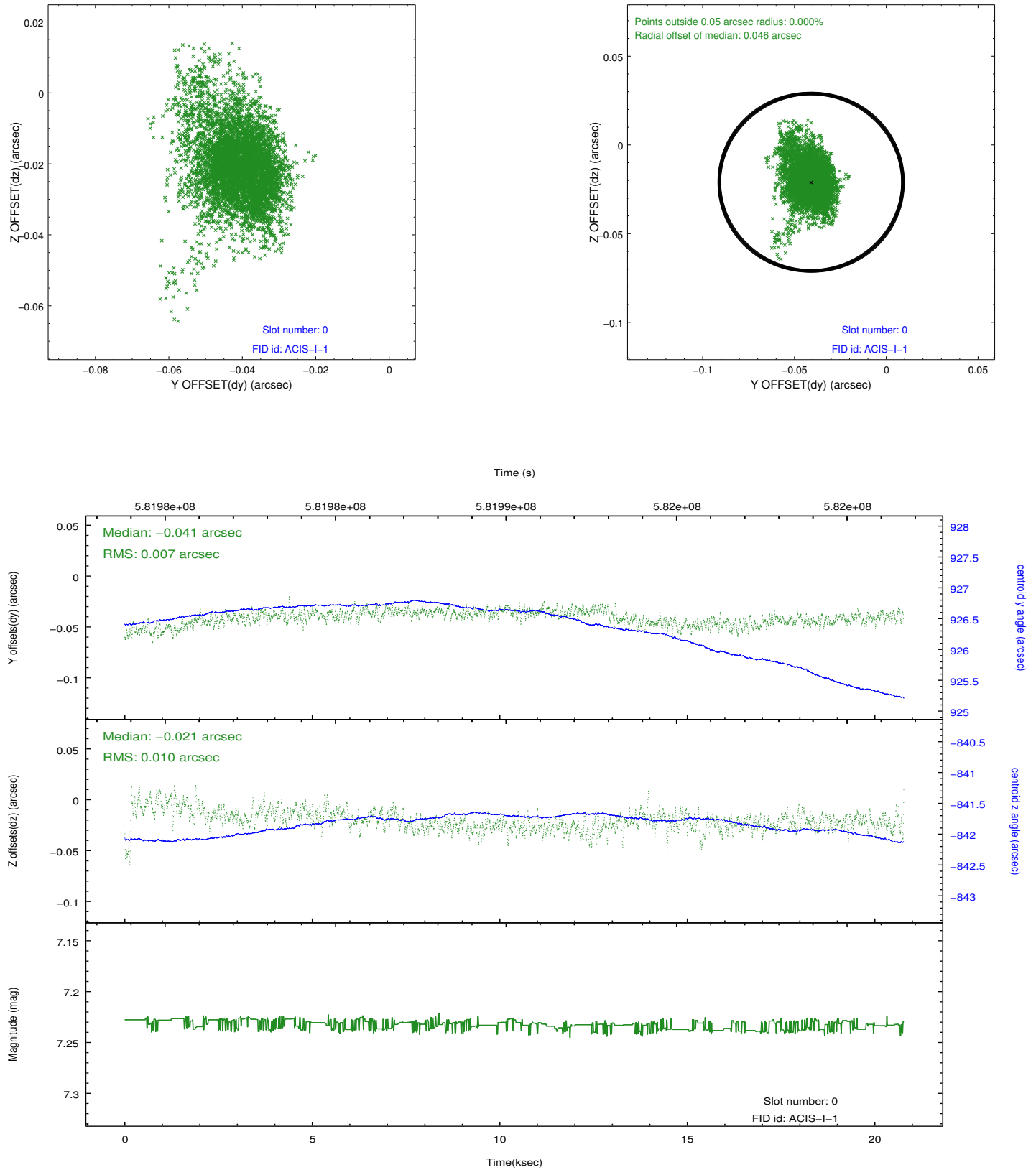


2.4.5 Slot 7

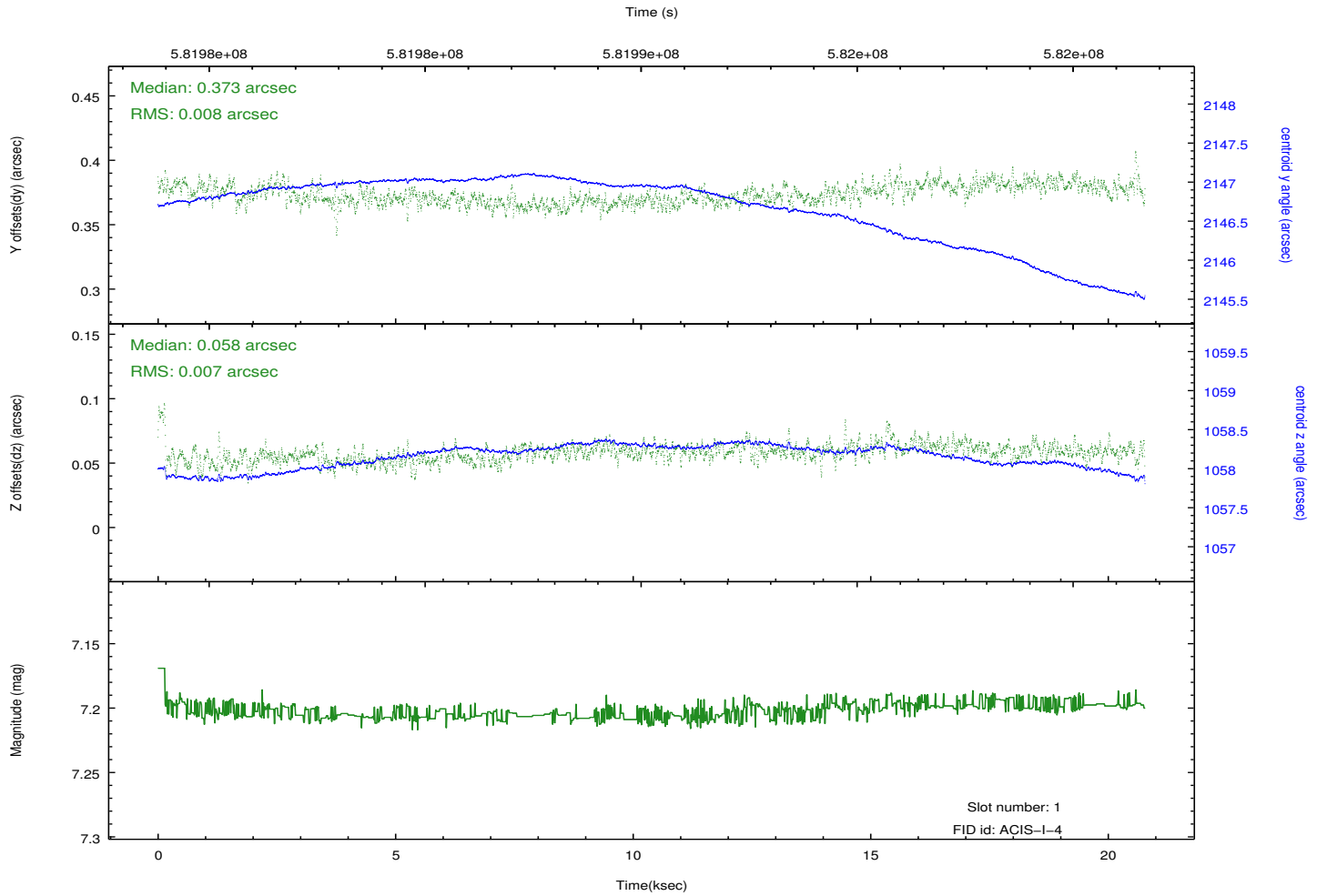
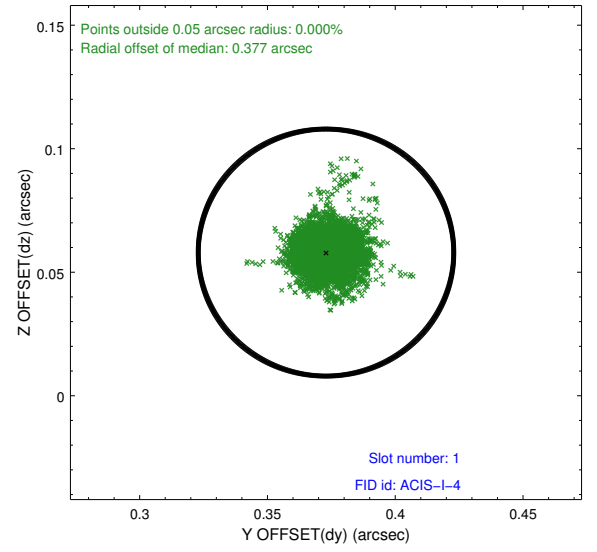
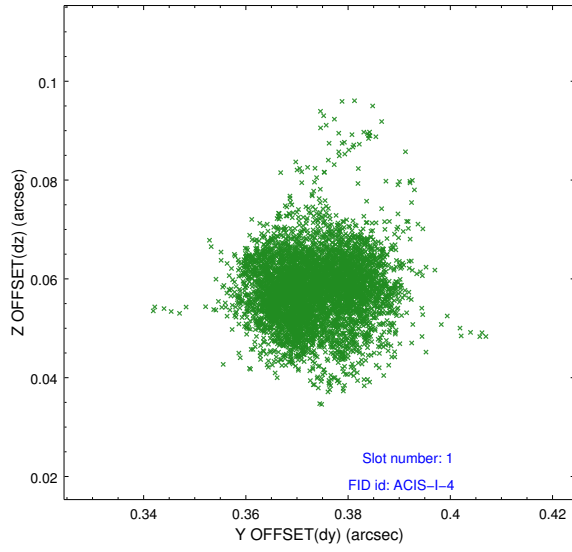


2.5 FID Slots

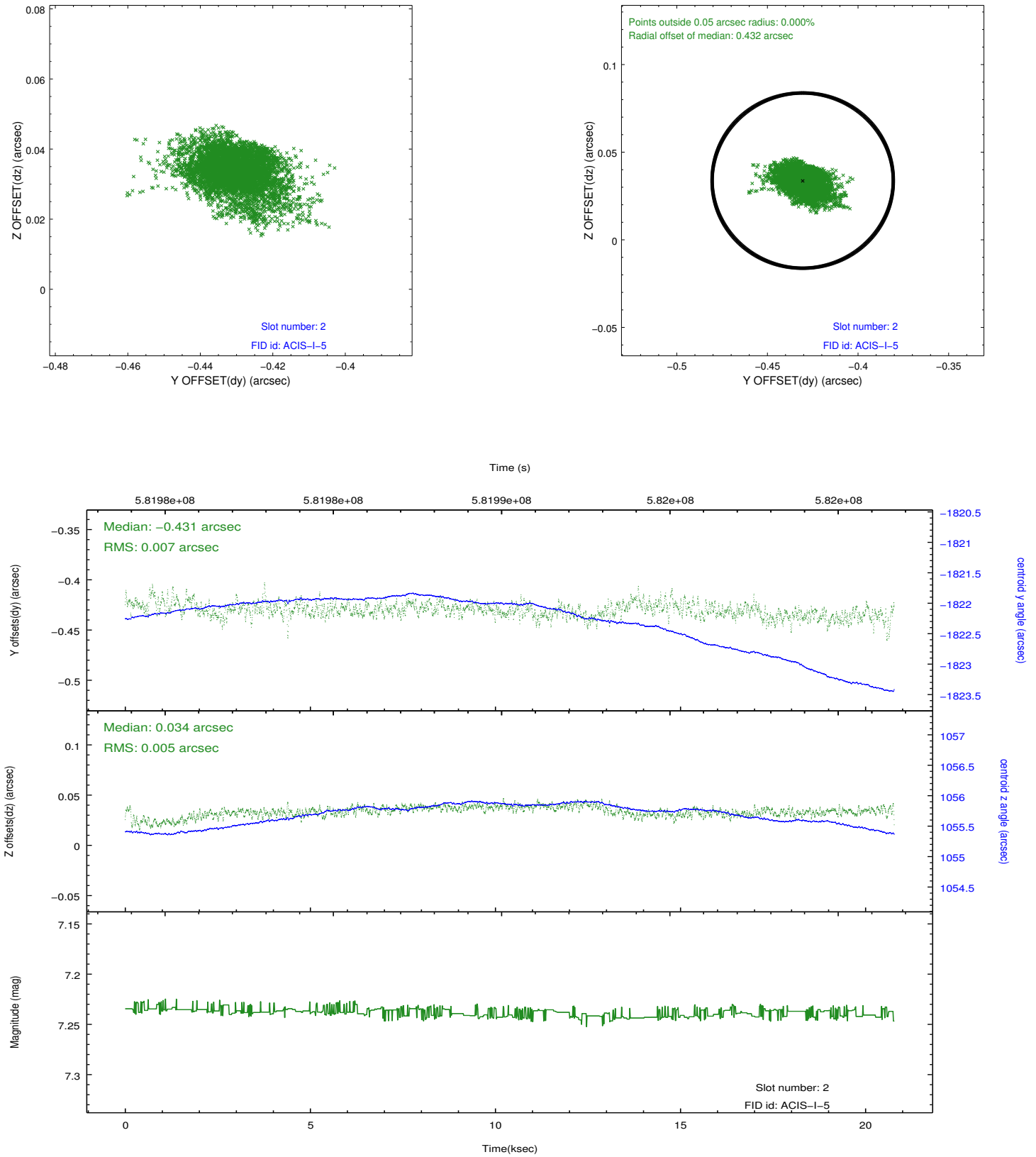
2.5.1 Slot 0



2.5.2 Slot 1



2.5.3 Slot 2



A Summary

A.1 Status

V&V Scientist	Joy Nichols
V&V Date (YYYY-MM-DD)	2016.06.13
V&V Edition	1
V&V Disposition and Status	OK
V&V Charge Time	20.084900154591

A.2 Comments