

# V&V Reference Report

## L2 ASCDS Version : 10.3.1

Observation 17586 - L2 Version 1  
Chandra X-Ray Center

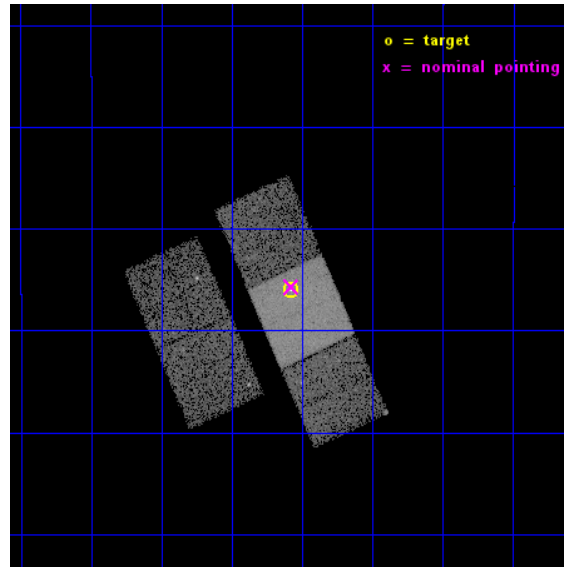
L2 Processing Date : Jan 9 2015

## Contents

<b>1</b>	<b>Front</b>	<b>2</b>
<b>2</b>	<b>OBI</b>	<b>3</b>
2.1	OBI . . . . .	3
2.1.1	Images . . . . .	3
2.1.2	Bias . . . . .	3
2.1.3	Parameters . . . . .	4
2.1.4	Events . . . . .	4
2.2	Compared Parameters . . . . .	5
2.3	Aspect . . . . .	6
2.4	Star Slots . . . . .	9
2.4.1	Slot 3 . . . . .	9
2.4.2	Slot 4 . . . . .	10
2.4.3	Slot 5 . . . . .	11
2.4.4	Slot 6 . . . . .	12
2.4.5	Slot 7 . . . . .	13
2.5	FID Slots . . . . .	14
2.5.1	Slot 0 . . . . .	14
2.5.2	Slot 1 . . . . .	15
2.5.3	Slot 2 . . . . .	16
<b>A</b>	<b>Summary</b>	<b>17</b>
A.1	Status . . . . .	17
A.2	Comments . . . . .	17

# 1 Front

seq_num	502489	Sequence number
obs_id	17586	Observation id
title	Understanding the nature of the peculiar transient Swift J123205.1-105602	Proposal title
observer	ELEONORA TROJA	Principal investigator
object	Swift J123205.1-105602	Source name
dtcycle	0	&#160
cycle	P	events from which exps? Prim/Second/Both
ra_targ	188.020417	Observer's specified target RA [deg]
dec_targ	-10.933528	Observer's specified target Dec [deg]
ra_nom	188.01901978318	Nominal RA [deg]
dec_nom	-10.928277861454	Nominal Dec [deg]
roll_nom	65.921007509331	Nominal Roll [deg]
revision	1	Processing version of data
ontime	15066.000115991	Sum of GTIs [s]
livetime	14869.151733047	Livetime [s]
ontime2	15066.000115991	Sum of GTIs [s]
ontime3	15066.000115991	Sum of GTIs [s]
ontime6	15066.000115991	Sum of GTIs [s]
ontime7	15066.000115991	Sum of GTIs [s]
ontime8	15066.000115991	Sum of GTIs [s]
l2events	75103	Number of level 2 events

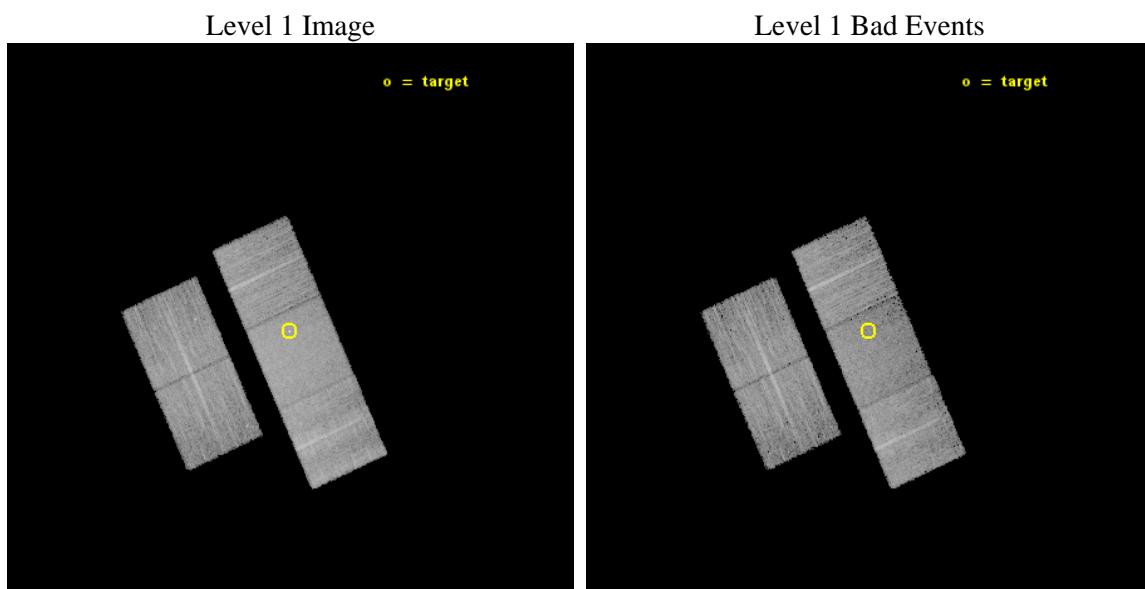




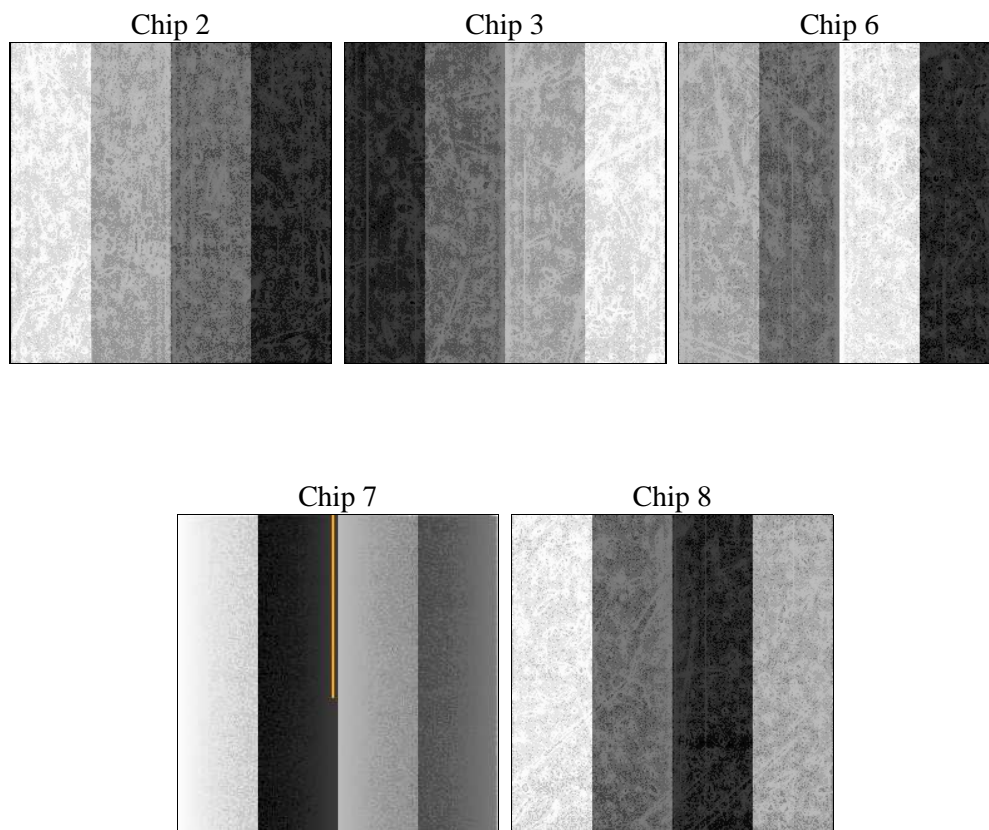
## 2 OBI

### 2.1 OBI

#### 2.1.1 Images



#### 2.1.2 Bias



### 2.1.3 Parameters

obi_num	0	Obi number	sched_exp_time	15000.000000	[s] Scheduled observation exposure time
ascdsver	10.3.1	Processing system revision	ontime	15066.000115991	Sum of GTIs [s]
caldsver	4.6.5	&#160	ontime2	15066.000115991	Sum of GTIs [s]
date	2015-01-10T03:55:40	Date and time of file creation	ontime3	15066.000115991	Sum of GTIs [s]
revision	1	Processing version of data	ontime6	15066.000115991	Sum of GTIs [s]
			ontime7	15066.000115991	Sum of GTIs [s]
			ontime8	15066.000115991	Sum of GTIs [s]
			l1events	424945	Number of level 1 events

### 2.1.4 Events

	ccd 2	ccd 3	ccd 6	ccd 7	ccd 8
level 1 events	74988	70780	78659	100863	99655
rejected events	66504	62518	69591	56506	73243
rejected %	88%	88%	88%	56%	73%

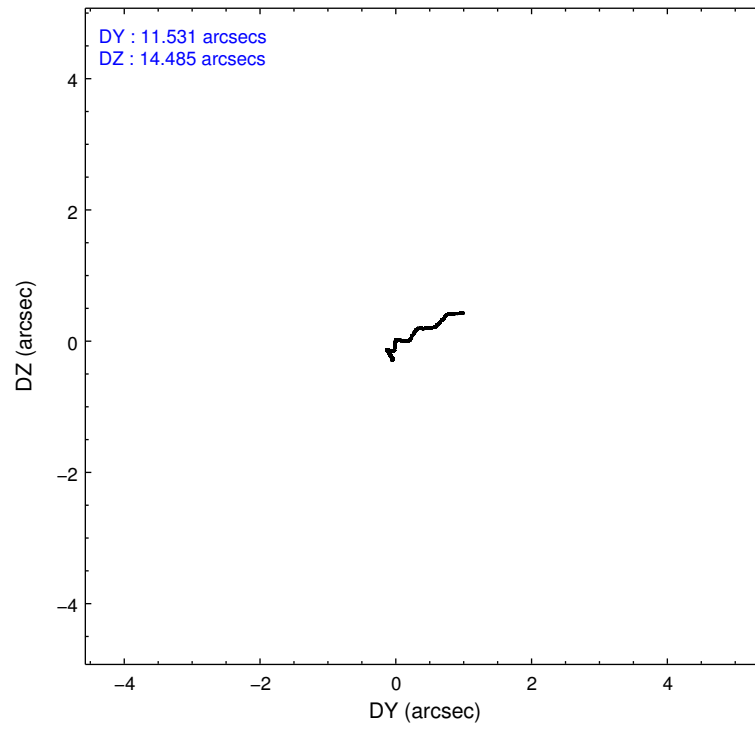
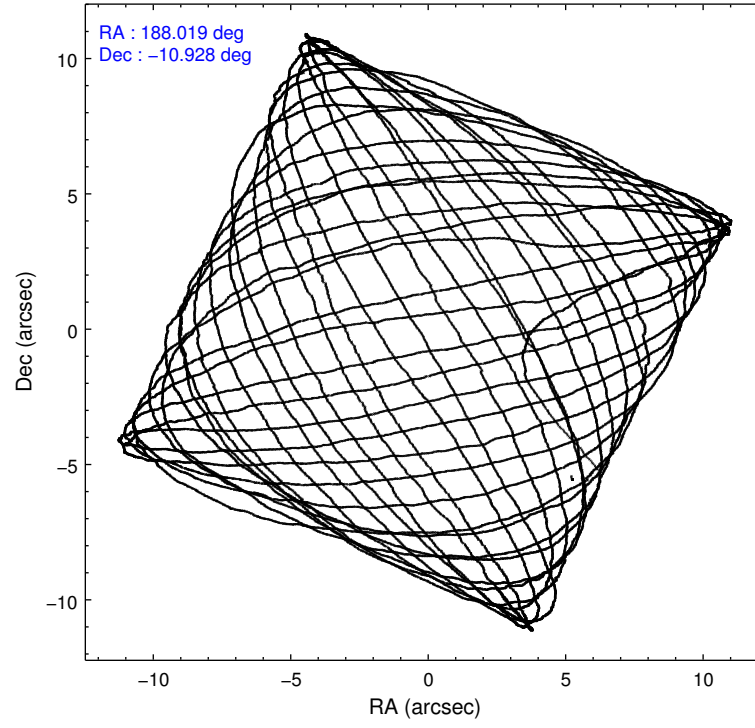
	ccd 2	ccd 3	ccd 6	ccd 7	ccd 8
grade 0 events	3059	2929	3000	3976	7787
	4%	4%	3%	3%	7%
grade 1 events	27	31	34	120	67
	0%	0%	0%	0%	0%
grade 2 events	2034	1843	2111	9194	6393
	2%	2%	2%	9%	6%
grade 3 events	887	834	942	3604	2606
	1%	1%	1%	3%	2%
grade 4 events	901	925	843	3626	2482
	1%	1%	1%	3%	2%
grade 5 events	3250	3956	3929	10080	5813
	4%	5%	4%	9%	5%
grade 6 events	1606	1734	2172	23969	7147
	2%	2%	2%	23%	7%
grade 7 events	63224	58528	65628	46294	67360
	84%	82%	83%	45%	67%

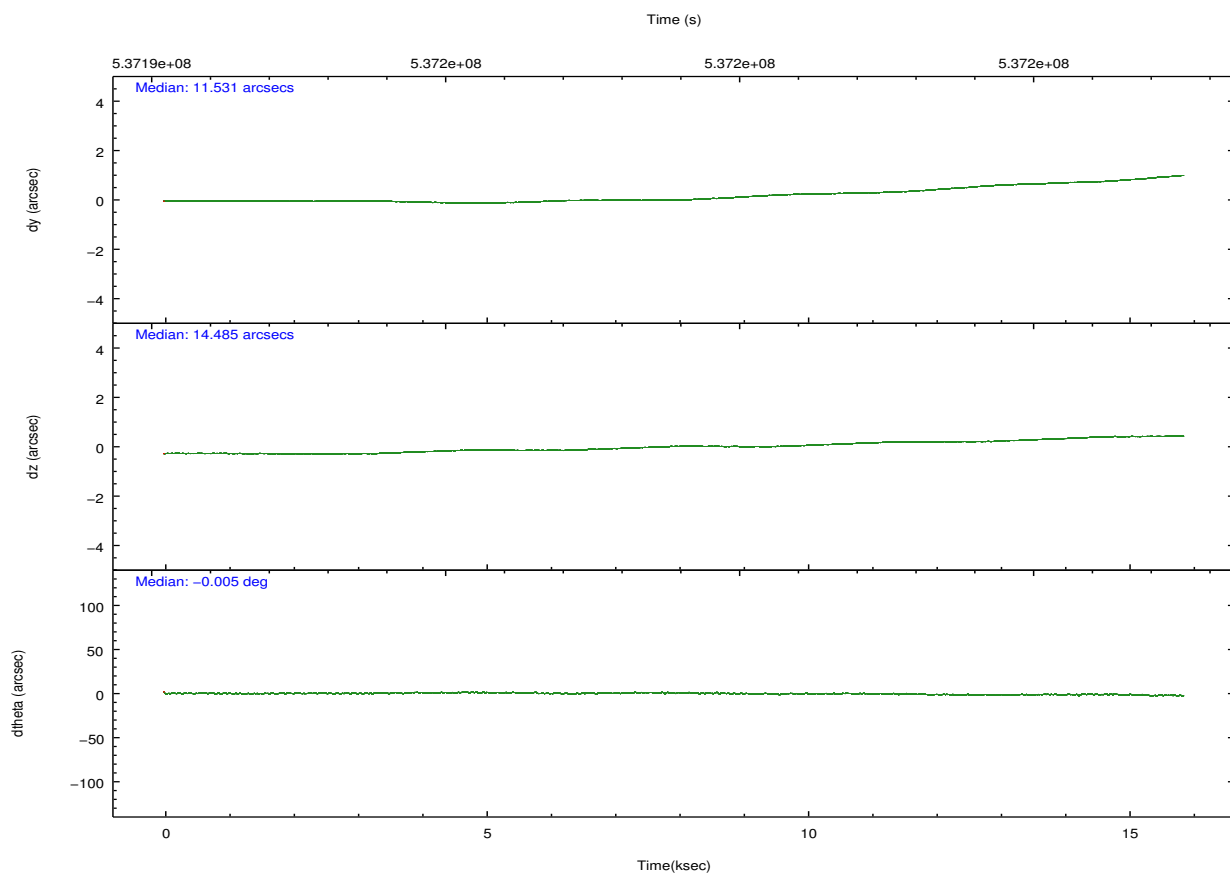
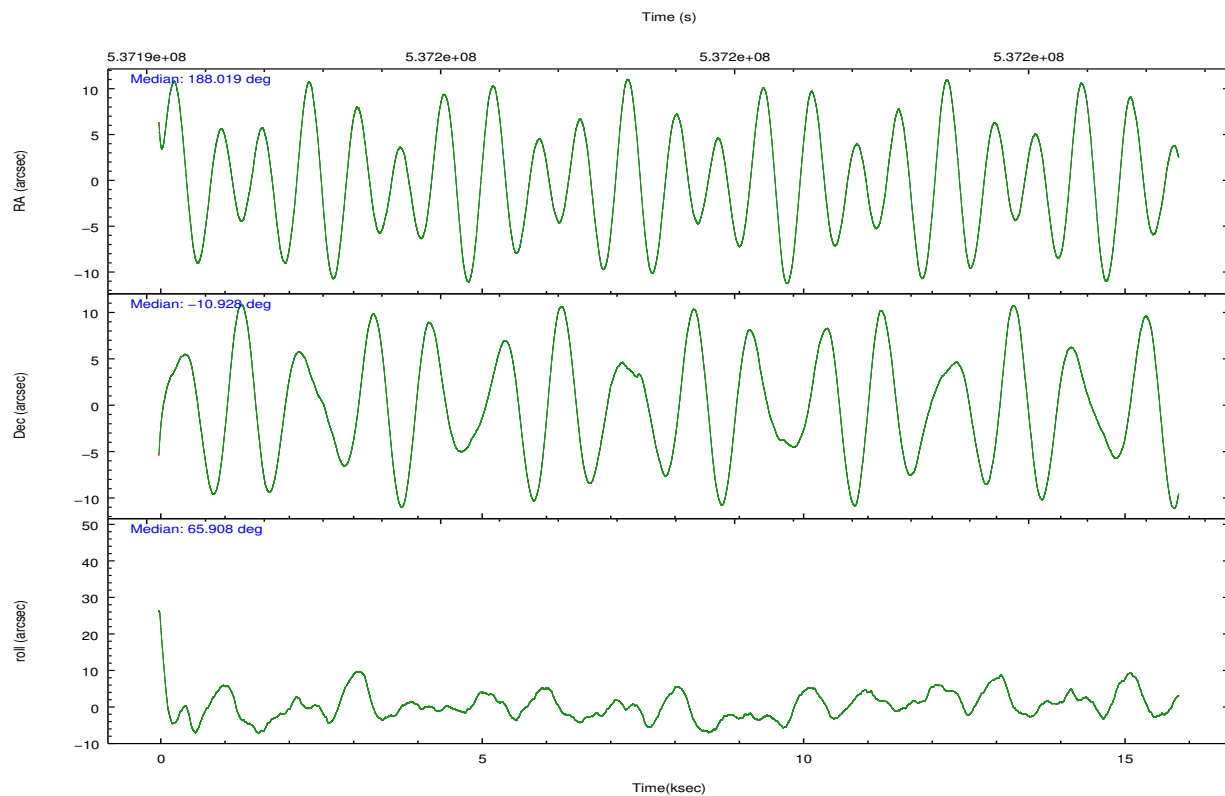
## 2.2 Compared Parameters

Parameter	Planned	Actual
Instrument	ACIS	ACIS
Detector	ACIS-23678	ACIS-23678
Grating	NONE	NONE
Data mode	VFAINT	VFAINT
Observation mode	POINTING	POINTING
[deg] Pointing RA	188.022239	188.0190197831803
[deg] Pointing Dec	-10.955537	-10.92827786145373
[deg] Pointing Roll	65.764970	65.92100750933096
[mm] SIM focus pos	-0.684267	-0.6828225247311905
[mm] SIM defocus	0	0.001444936568705701
[mm] SIM translation stage pos	-190.132523	-190.1400660498719
[mm] SIM translation stage offset	0	0.00754346686406393
[s] Observation start time (MET)	537191810.184000	537190157.6178401
Observation start date	2015-01-09T11:55:43	2015-01-09T11:29:17
[s] Observation end time (MET)	537206810.184000	537207829.13133
Observation end date	2015-01-09T16:05:43	2015-01-09T16:23:49
Read mode	TIMED	TIMED

Parameter	Planned	Actual
Obspar format version number	7	7
Obspar file type	PREDICTED	ACTUAL
Obspar update status	NONE	UPDATED
CCD I0 on	N	N
CCD I1 on	N	N
CCD I2 on	Y	Y
CCD I3 on	O1	Y
CCD S0 on	N	N
CCD S1 on	N	N
CCD S2 on	Y	Y
CCD S3 on	Y	Y
CCD S4 on	Y	Y
CCD S5 on	N	N
Number of optional ACIS chips dropped	0	0
On-chip summing requested	N	N
Subarray requested	NONE	NONE
Alternating exposures requested	N	N
[s] Primary exposure time	0.000000	3.1

## 2.3 Aspect



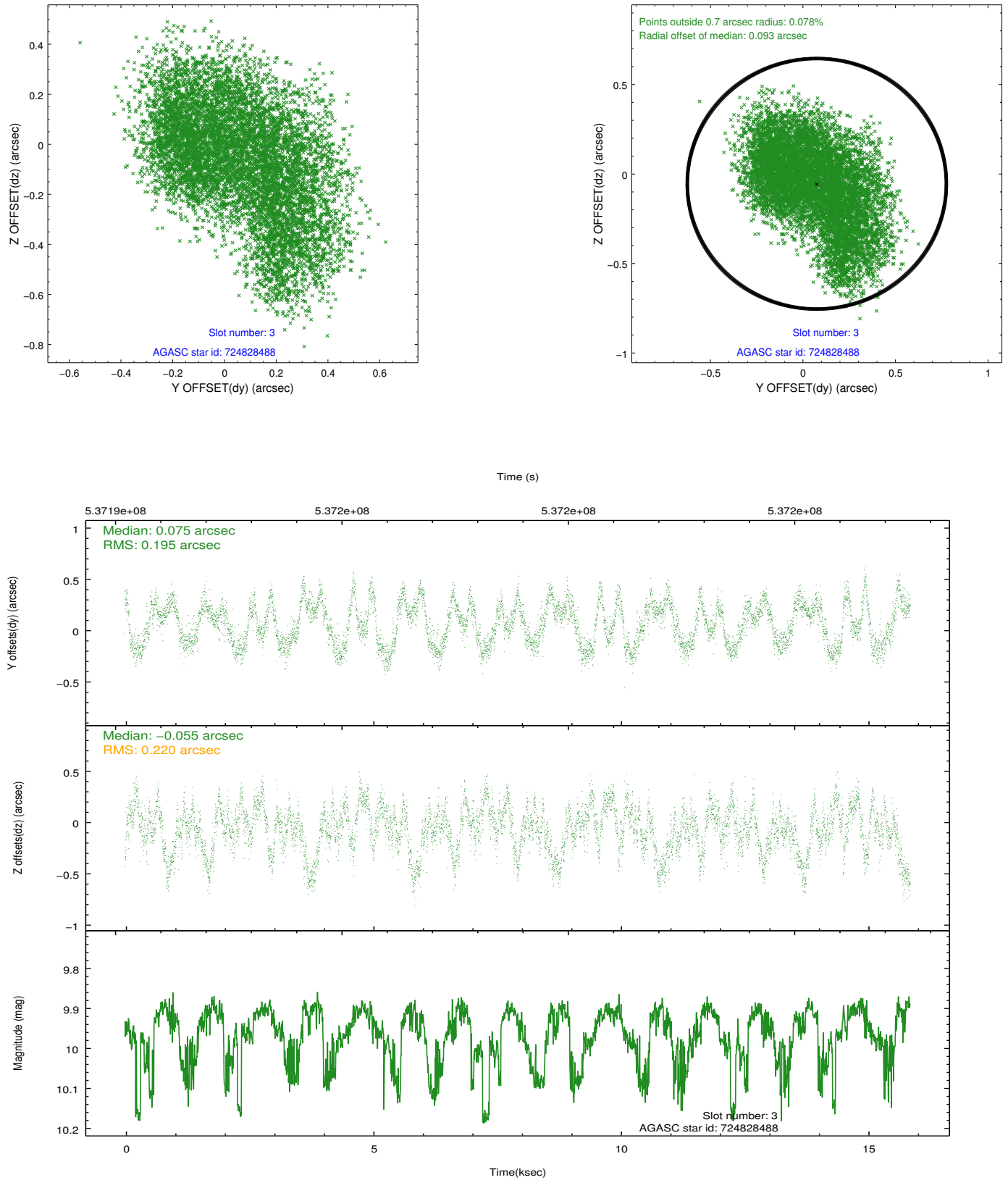


### Slot Statistics

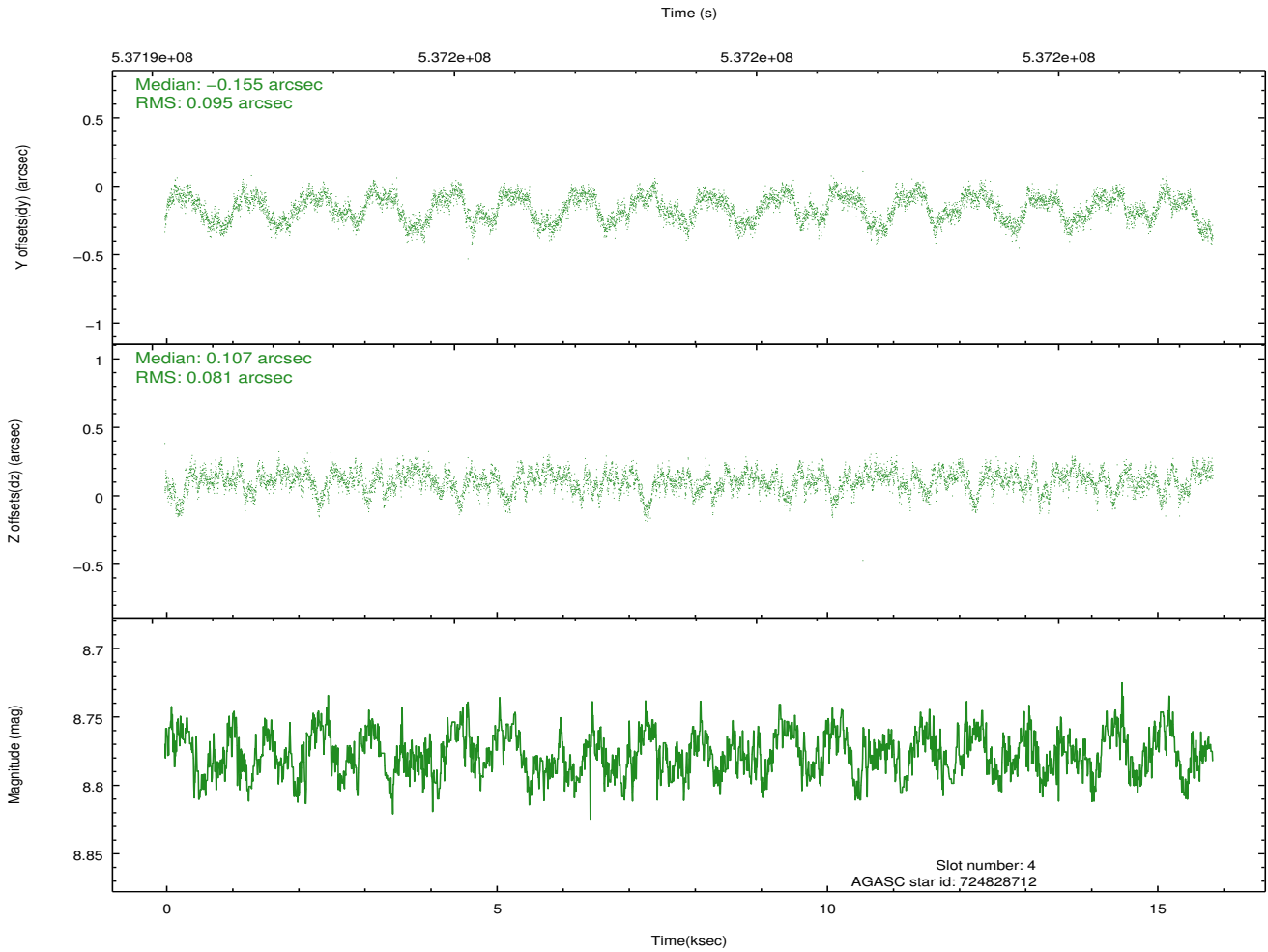
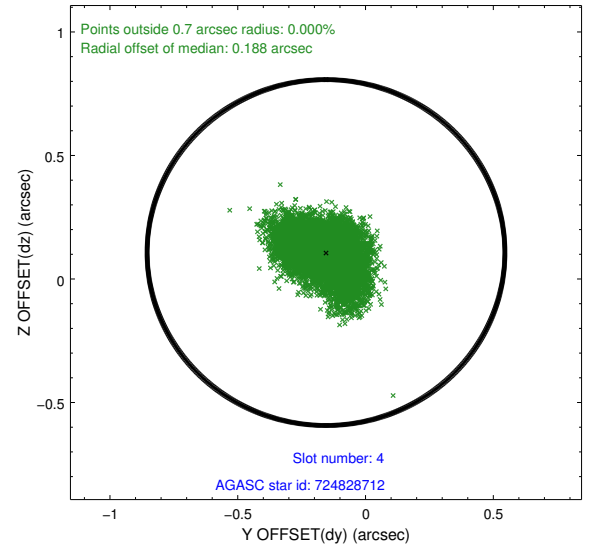
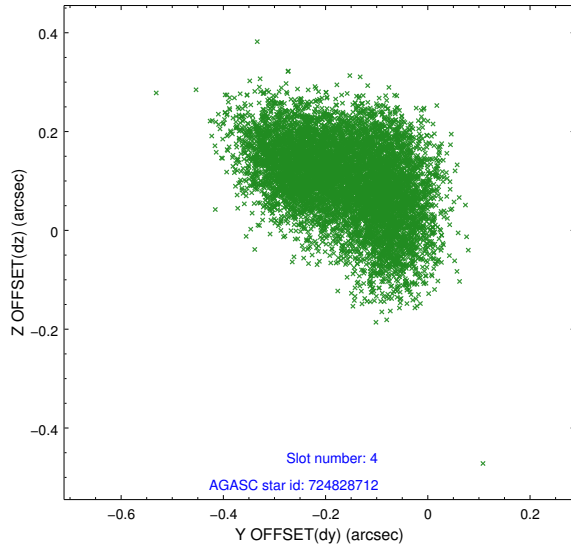
slot	status	used	id	mag	n_pts	med_dy	med_dz	dr1	dr2	ra	dec	mean_y	mean_z
0	FID		ACIS-S-2	7.00	3870	-0.076	-0.036	0.012	0.020	0.000000	0.000000	-764.66	-1735.90
1	FID		ACIS-S-4	7.10	3870	0.213	0.047	0.008	0.014	0.000000	0.000000	2148.76	172.42
2	FID		ACIS-S-5	7.12	3870	-0.168	-0.003	0.010	0.019	0.000000	0.000000	-1817.26	166.30
3	GUIDE	used	724828488	9.96	7727	0.075	-0.055	0.319	0.500	187.416655	-10.738707	-169.67	2272.89
4	GUIDE	used	724828712	8.78	7735	-0.155	0.107	0.135	0.208	188.578565	-10.882907	1044.48	-1685.21
5	GUIDE	used	724834176	9.84	7681	0.137	-0.187	0.163	0.278	187.499703	-11.249672	-1724.25	1246.65
6	GUIDE	used	724844544	8.40	7735	0.233	-0.045	0.120	0.203	188.295031	-11.134249	-191.43	-1142.82
7	GUIDE	used	724833408	9.70	7723	-0.264	0.192	0.185	0.312	188.839570	-10.612979	2308.49	-2132.32

## 2.4 Star Slots

### 2.4.1 Slot 3

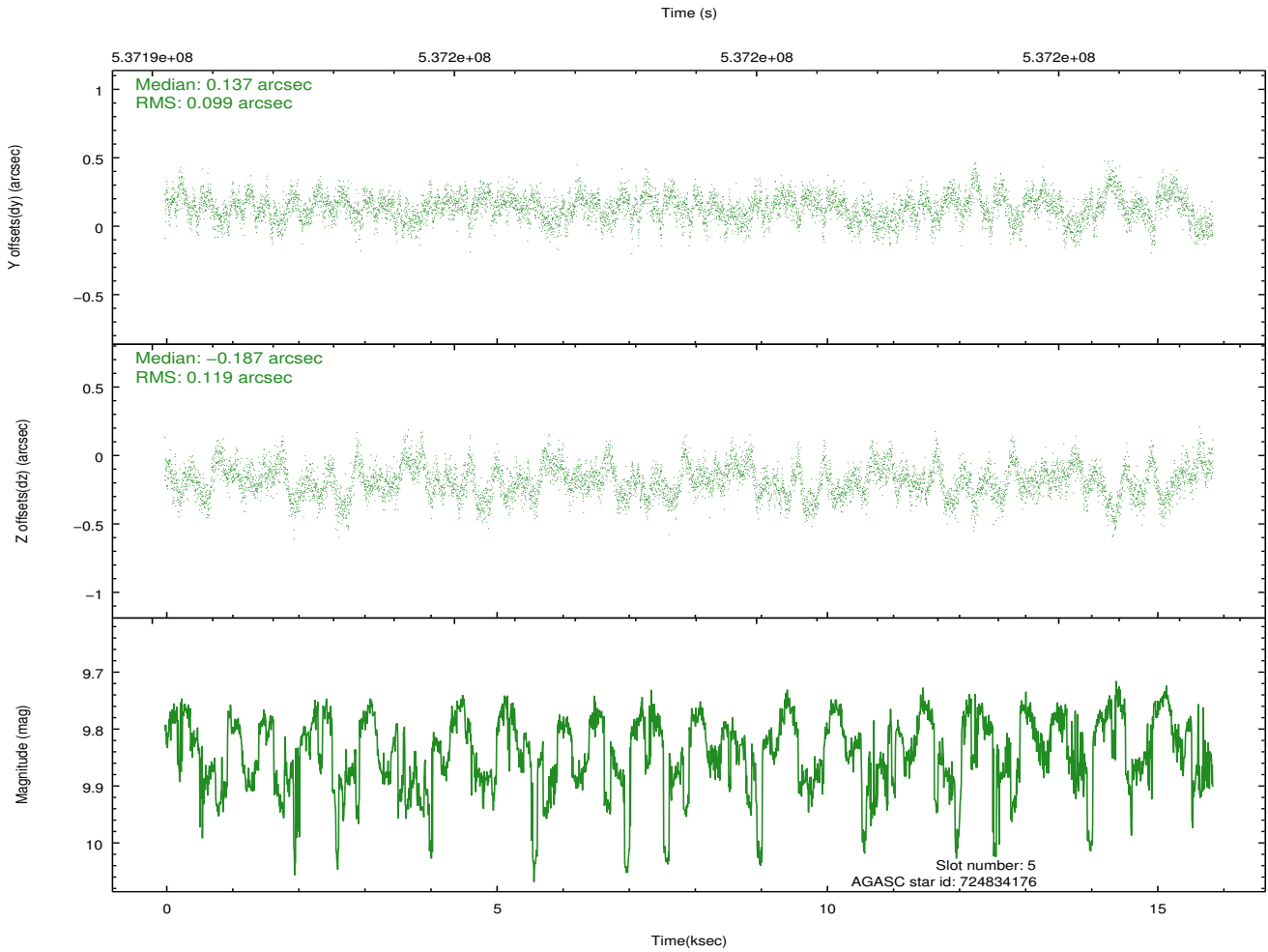
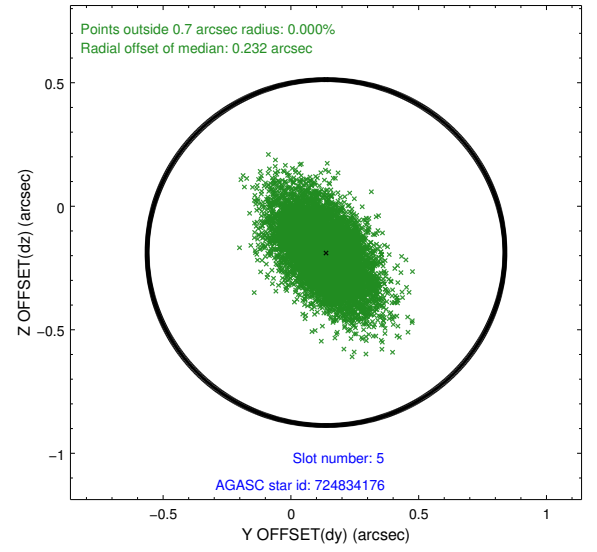
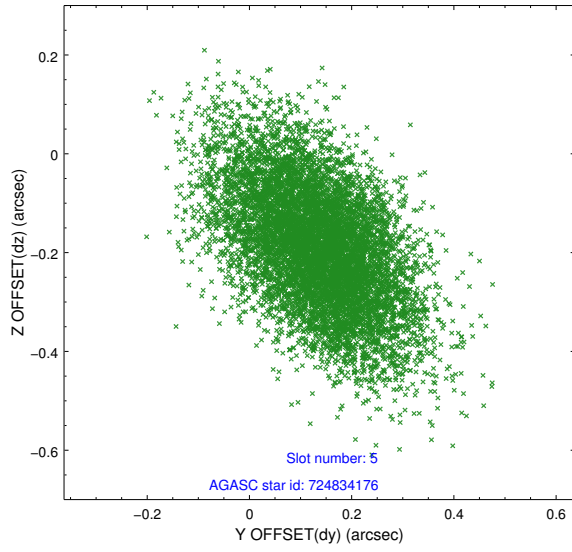


## 2.4.2 Slot 4

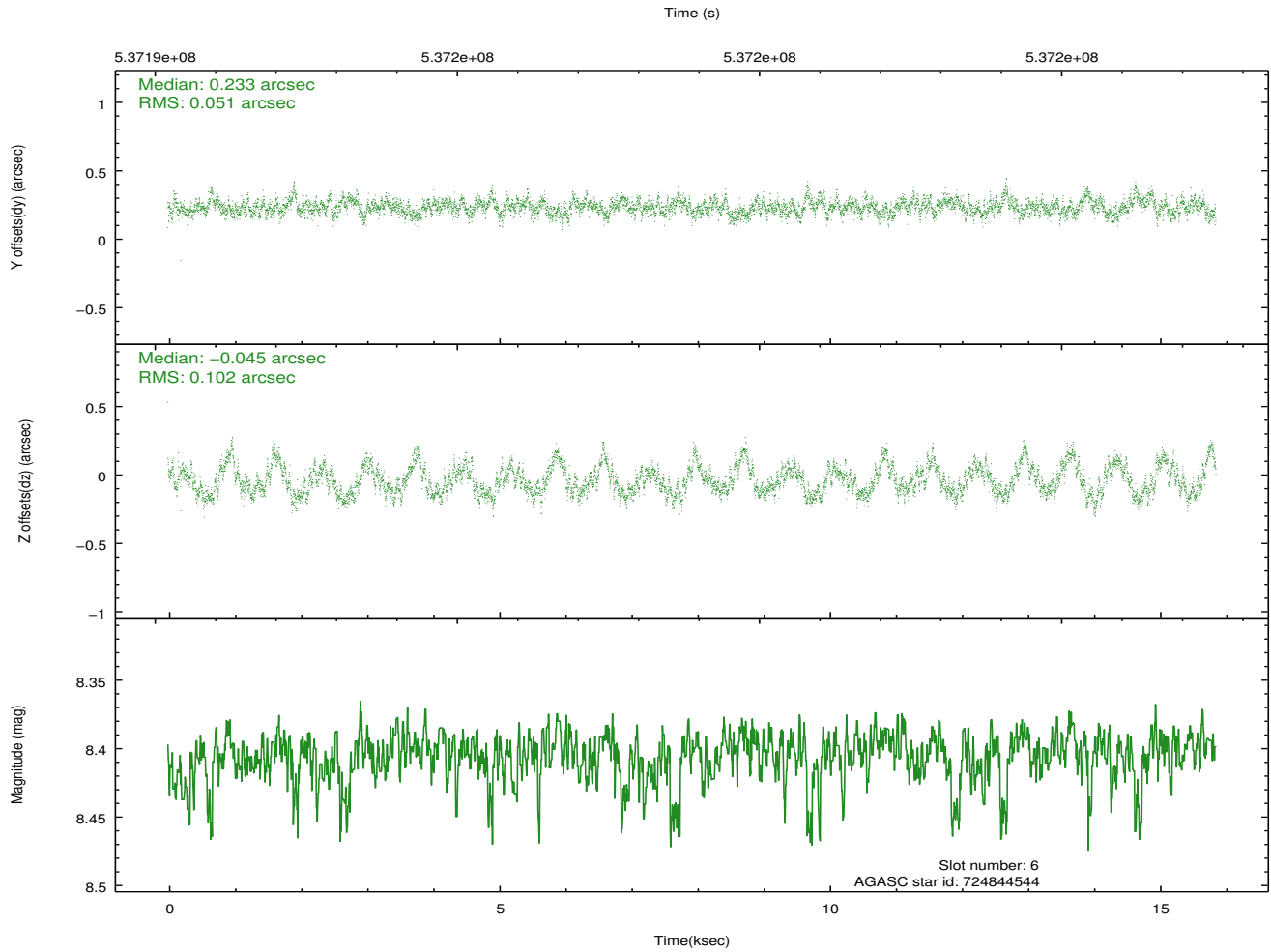
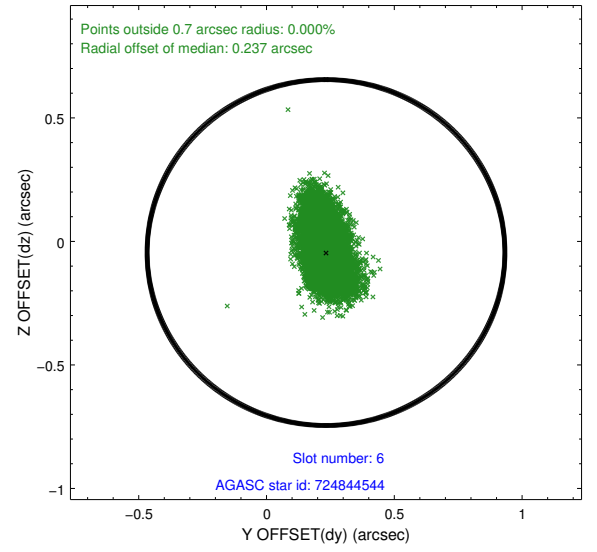
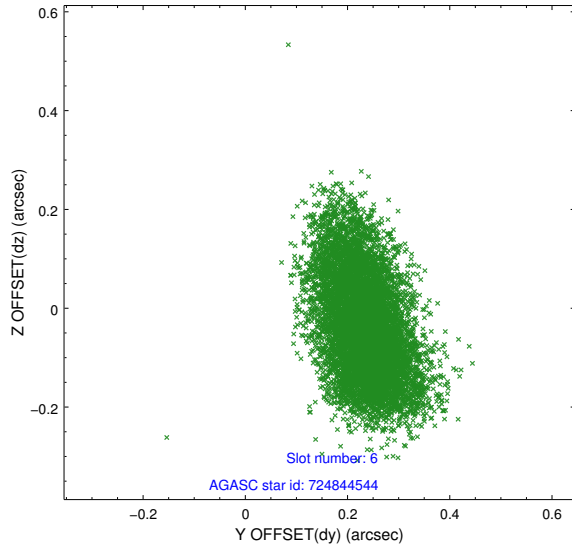




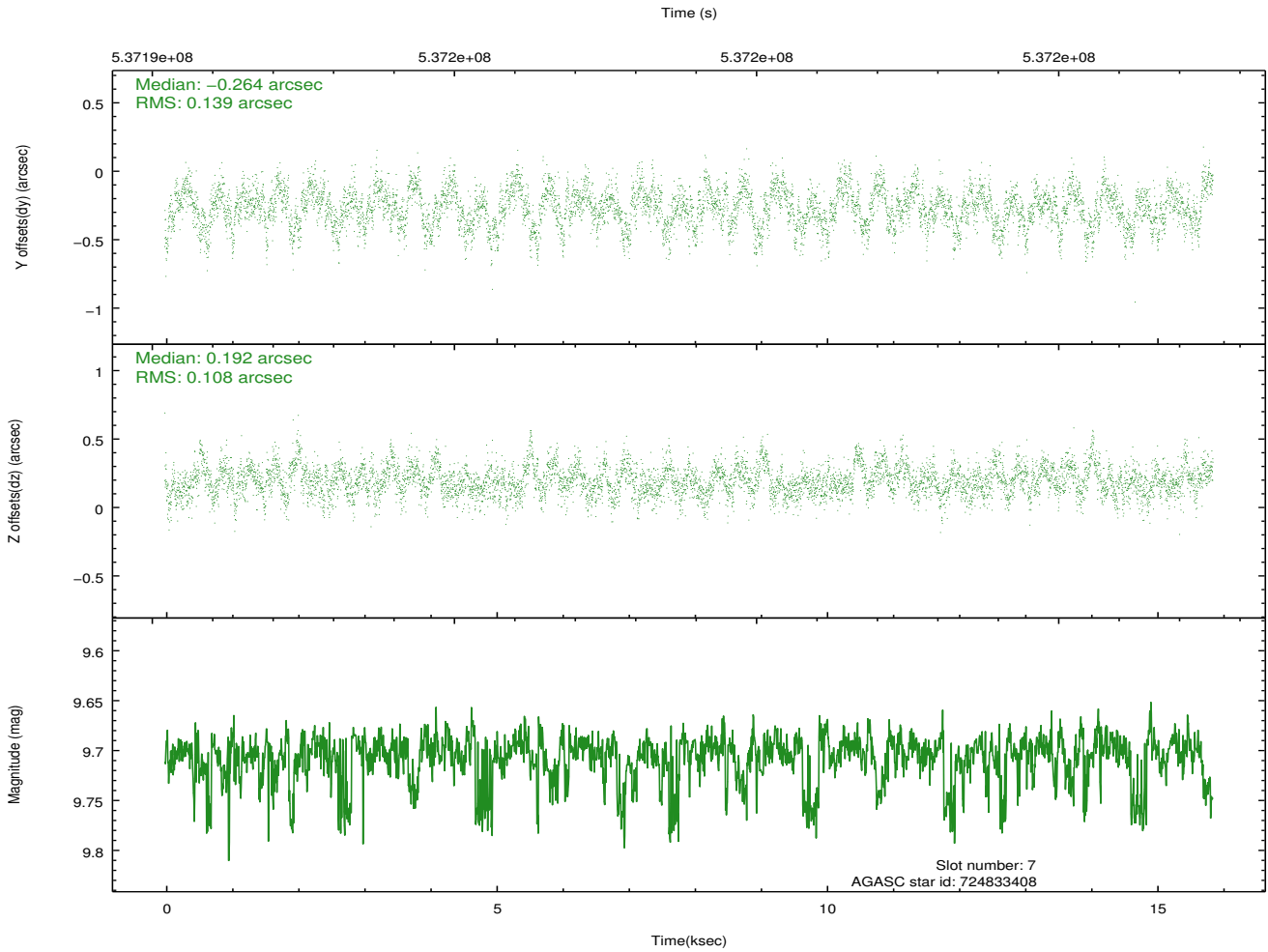
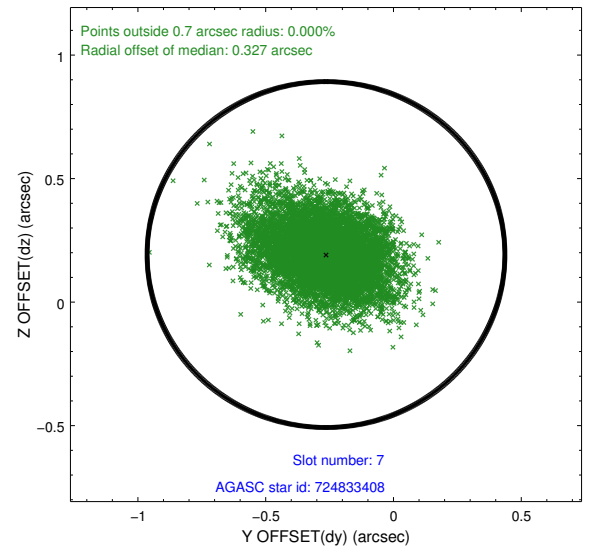
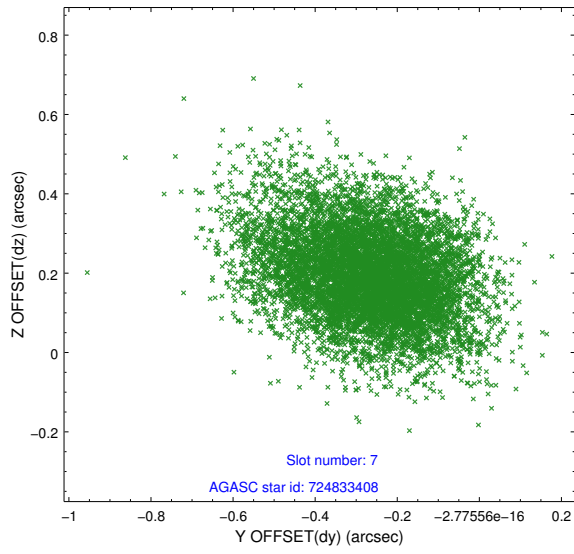
### 2.4.3 Slot 5



## 2.4.4 Slot 6

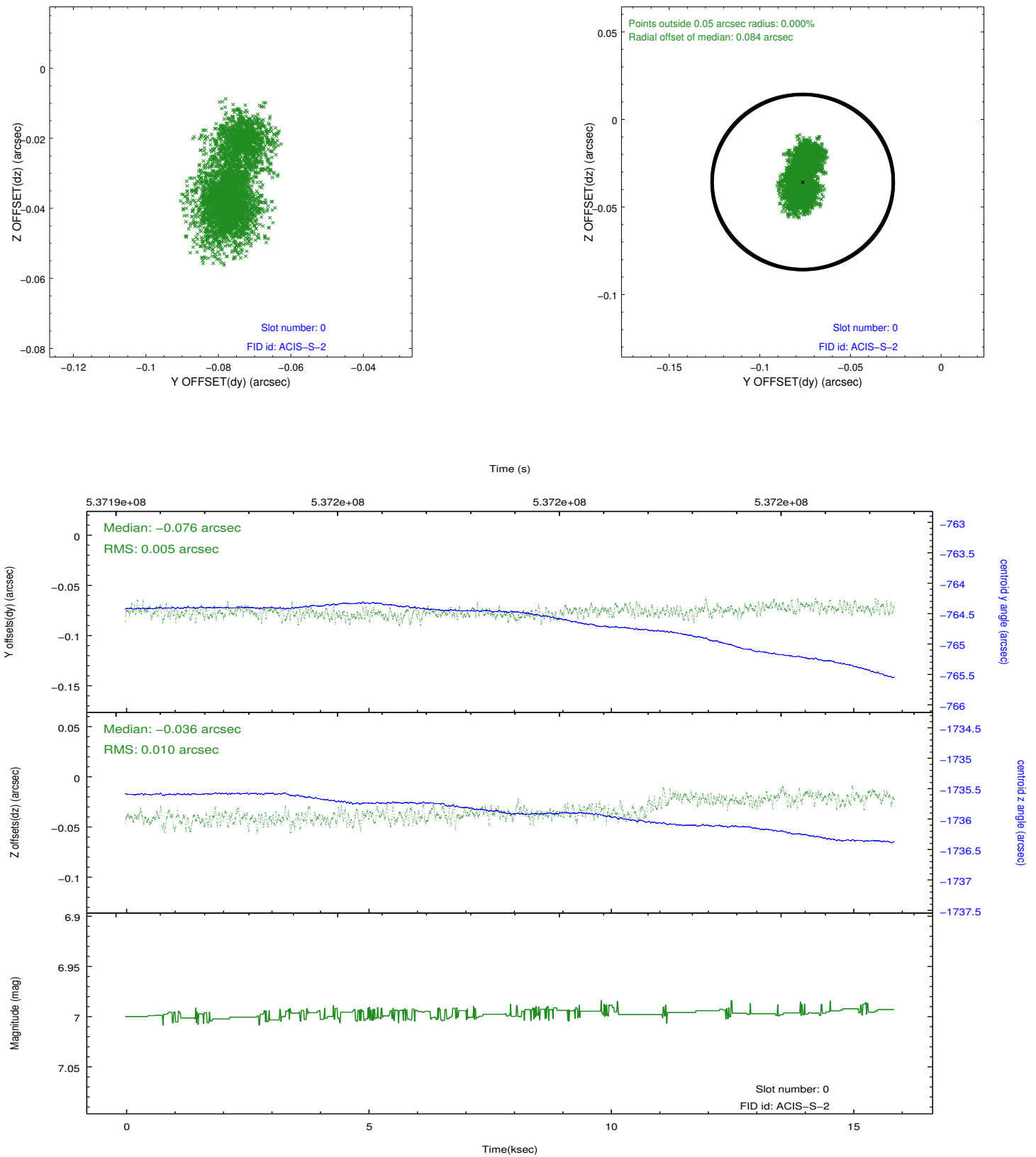


## 2.4.5 Slot 7

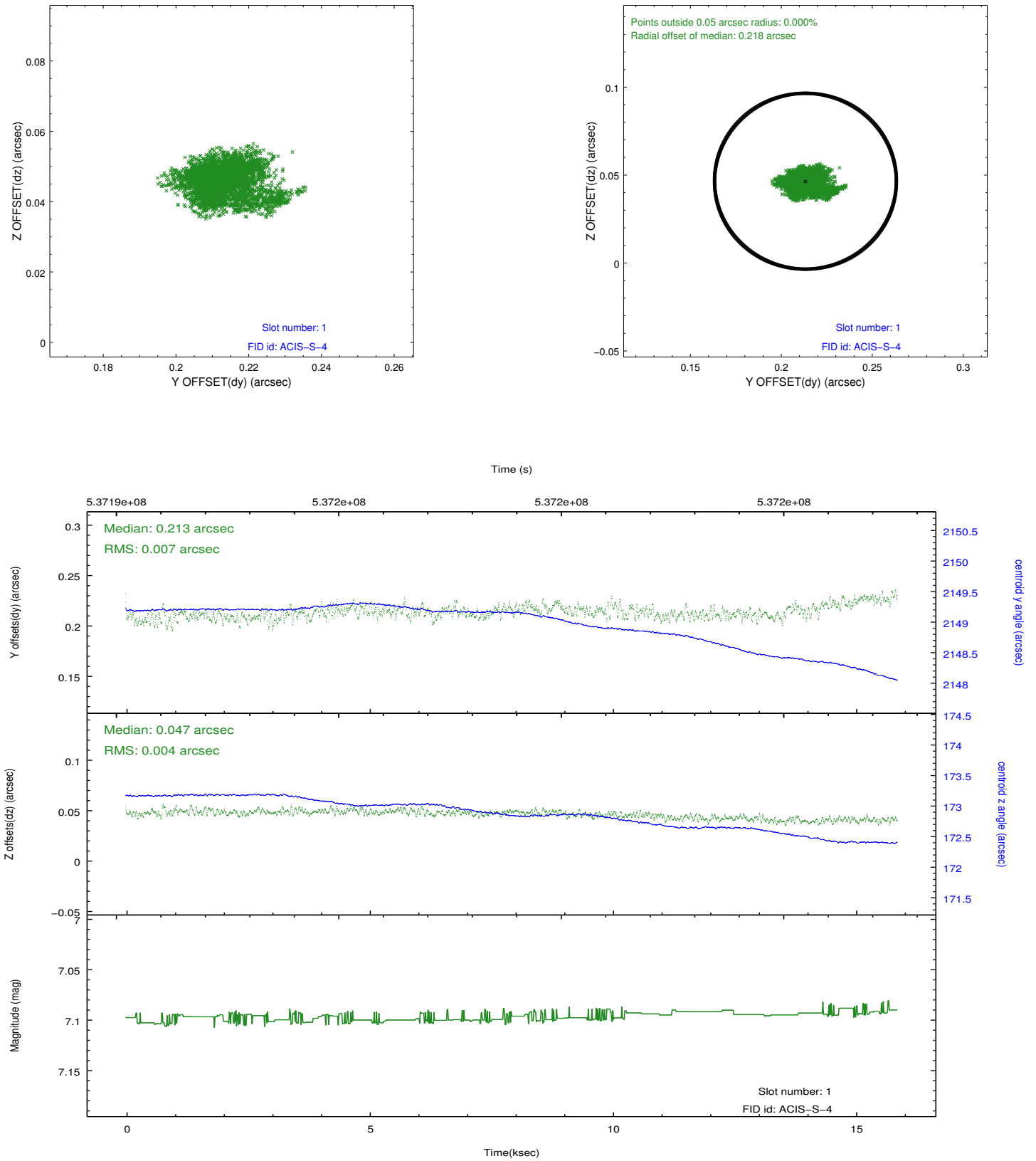


## 2.5 FID Slots

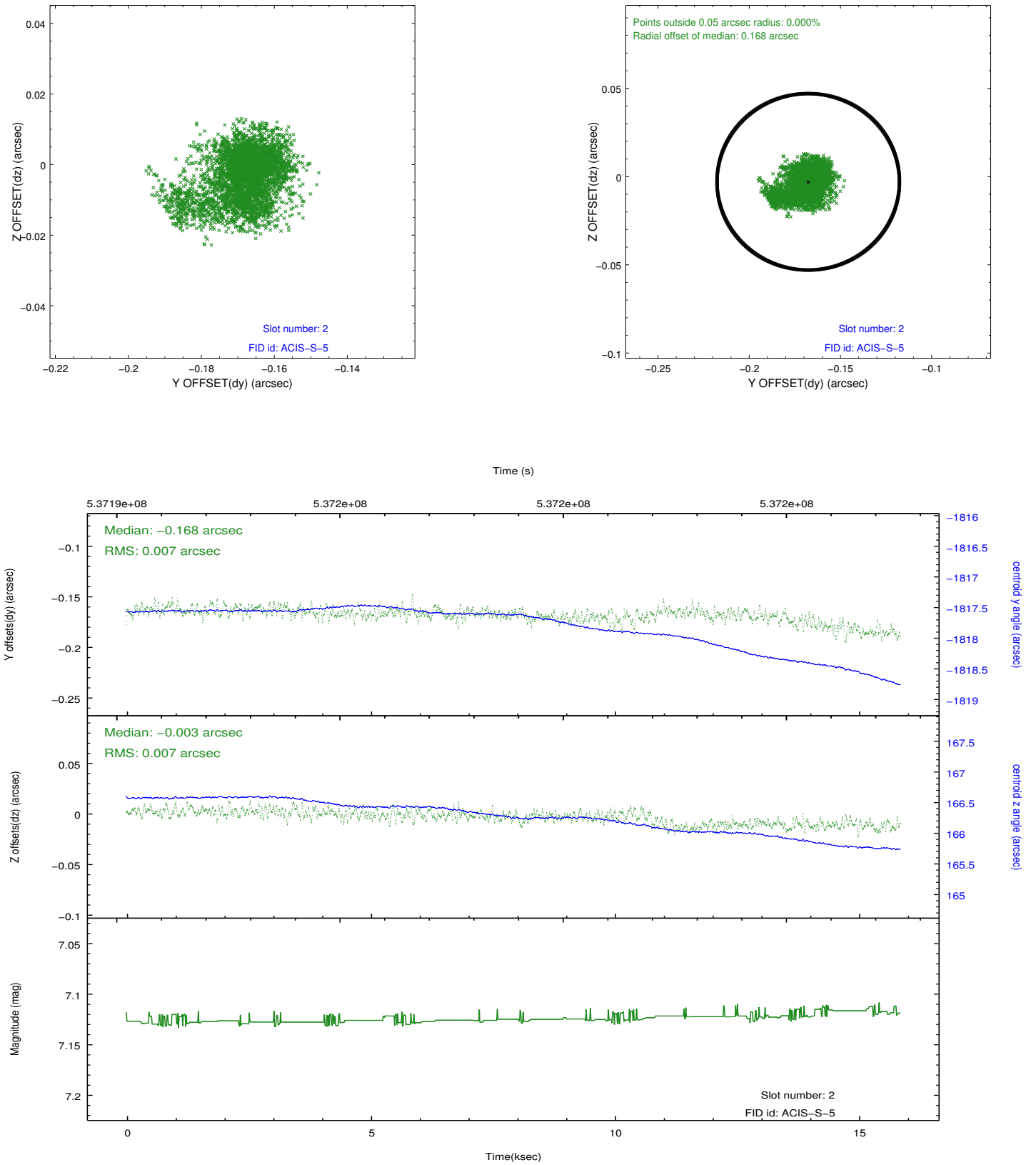
### 2.5.1 Slot 0



## 2.5.2 Slot 1



### 2.5.3 Slot 2



## A Summary

### A.1 Status

V&V Scientist	Joy Nichols
V&V Date (YYYY-MM-DD)	2015.01.10
V&V Edition	1
V&V Disposition and Status	OK
V&V Charge Time	15.066000115991

### A.2 Comments