

V&V Reference Report

L2 ASCDS Version : 10.3.3

Observation 16826 - L2 Version 1
Chandra X-Ray Center

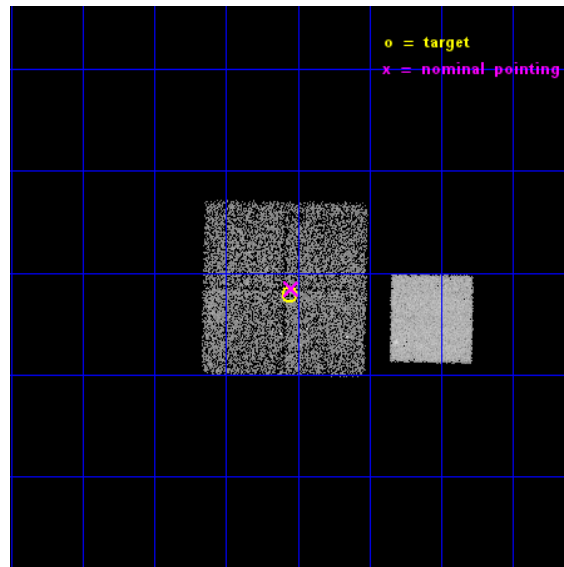
L2 Processing Date : Mar 23 2015

Contents

1	Front	2
2	OBI	3
2.1	OBI	3
2.1.1	Images	3
2.1.2	Bias	3
2.1.3	Parameters	4
2.1.4	Events	4
2.2	Compared Parameters	5
2.3	Aspect	6
2.4	Star Slots	9
2.4.1	Slot 3	9
2.4.2	Slot 4	10
2.4.3	Slot 5	11
2.4.4	Slot 6	12
2.4.5	Slot 7	13
2.5	FID Slots	14
2.5.1	Slot 0	14
2.5.2	Slot 1	15
2.5.3	Slot 2	16
A	Summary	17
A.1	Status	17
A.2	Comments	17

1 Front

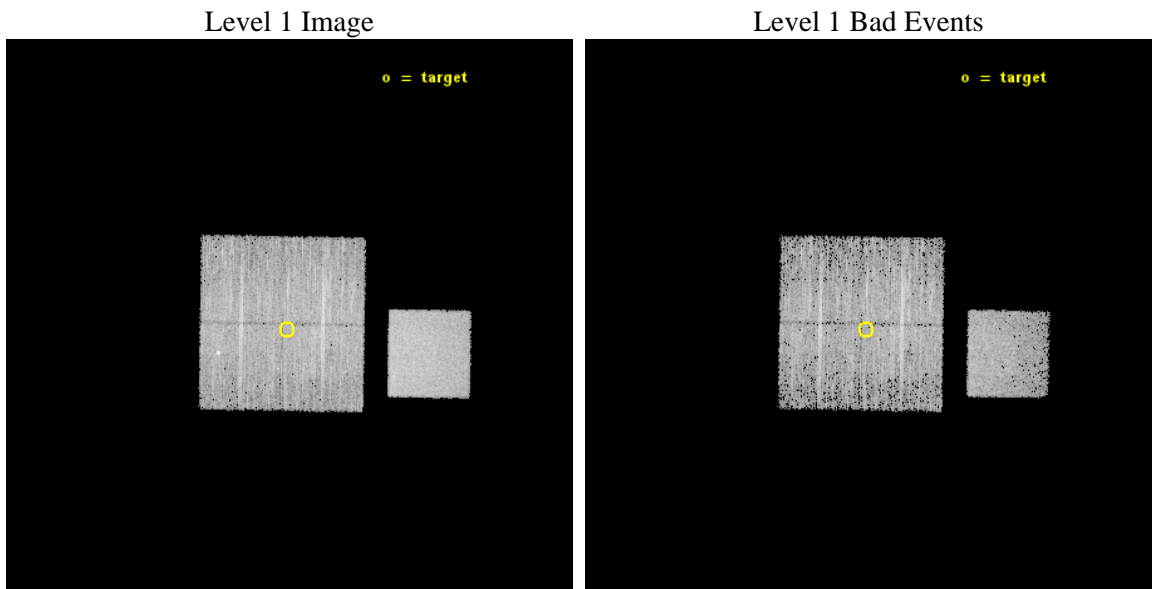
seq_num	502344	Sequence number
obs_id	16826	Observation id
title	Snap-shot survey of unidentified Fermi sources	Proposal title
observer	Dr. Blagoy Rangelov	Principal investigator
object	2FGL J1839.0-0102	Source name
dtcycle	0	
cycle	P	events from which exps? Prim/Second/Both
ra_targ	279.764583	Observer's specified target RA [deg]
dec_targ	-1.035278	Observer's specified target Dec [deg]
ra_nom	279.76113204575	Nominal RA [deg]
dec_nom	-1.025869968352	Nominal Dec [deg]
roll_nom	90.926113493927	Nominal Roll [deg]
revision	1	Processing version of data
ontime	10065.700077534	Sum of GTIs [s]
livetime	9934.1842957602	Livetime [s]
ontime0	10062.559107304	Sum of GTIs [s]
ontime1	10065.700077534	Sum of GTIs [s]
ontime2	10065.700077534	Sum of GTIs [s]
ontime3	10065.700077534	Sum of GTIs [s]
ontime7	10065.700077534	Sum of GTIs [s]
l2events	44113	Number of level 2 events



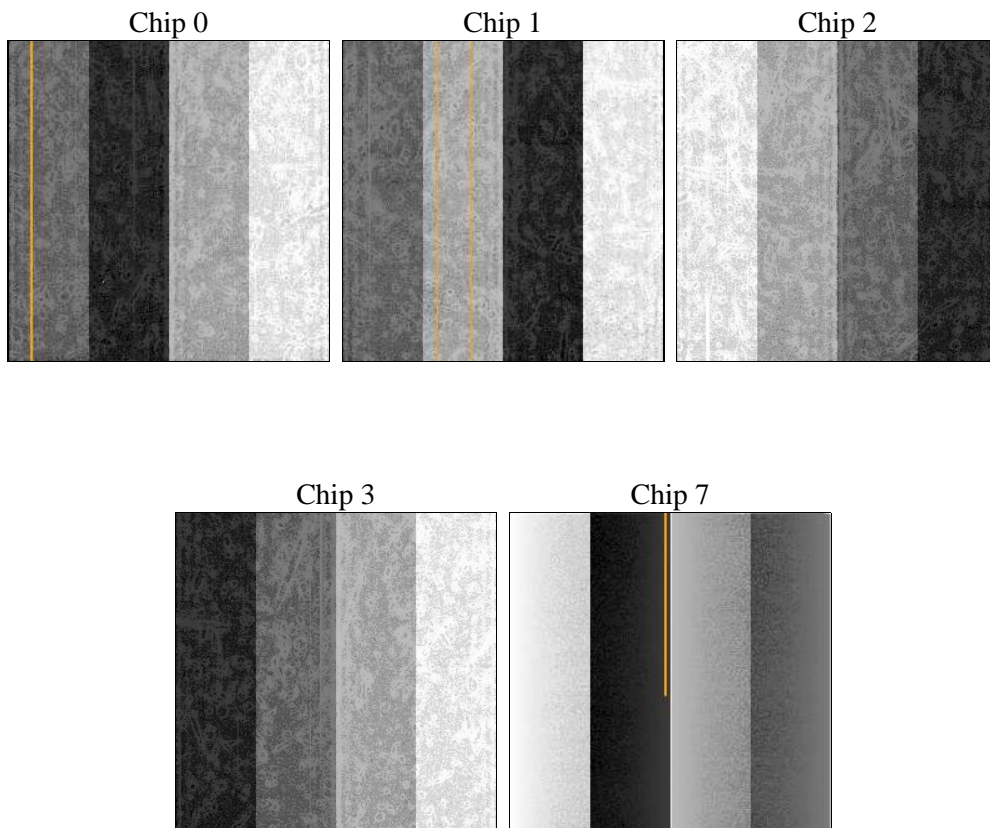
2 OBI

2.1 OBI

2.1.1 Images



2.1.2 Bias



2.1.3 Parameters

obi_num	4	Obi number	sched_exp_time	10000.000000	[s] Scheduled observation exposure time
ascdsver	10.3.3	Processing system revision	ontime	10065.700077534	Sum of GTIs [s]
caldsver	4.6.7	 	ontime0	10062.559107304	Sum of GTIs [s]
date	2015-03-23T04:54:27	Date and time of file creation	ontime1	10065.700077534	Sum of GTIs [s]
revision	1	Processing version of data	ontime2	10065.700077534	Sum of GTIs [s]
			ontime3	10065.700077534	Sum of GTIs [s]
			ontime7	10065.700077534	Sum of GTIs [s]
			l1events	227013	Number of level 1 events

2.1.4 Events

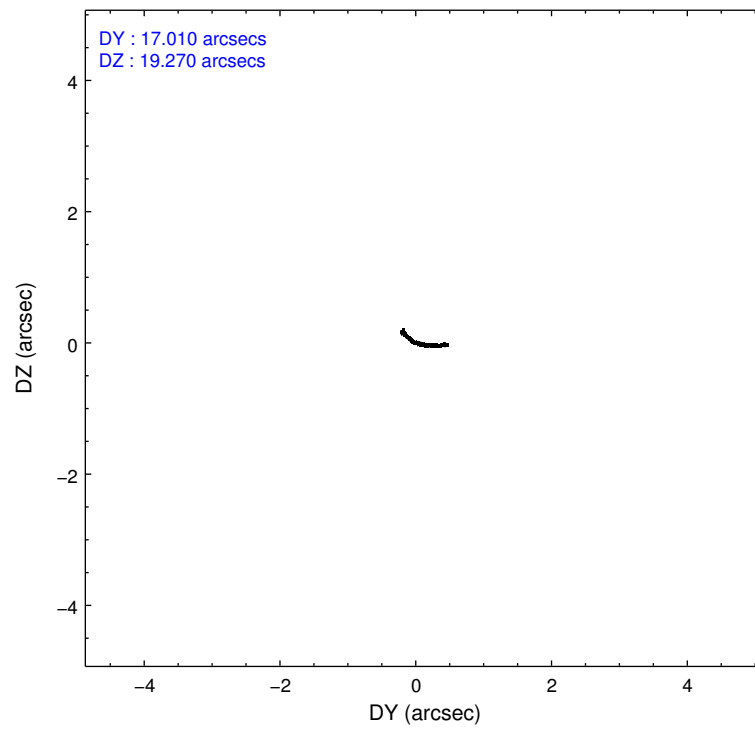
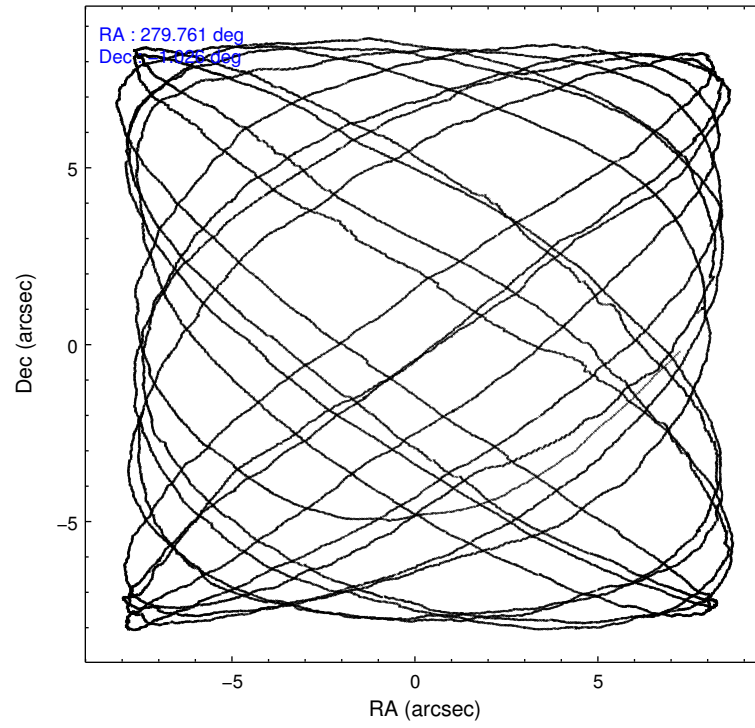
	ccd 0	ccd 1	ccd 2	ccd 3	ccd 7
level 1 events	39403	39161	45623	42247	60579
rejected events	34157	32801	40524	36917	33991
rejected %	86%	83%	88%	87%	56%

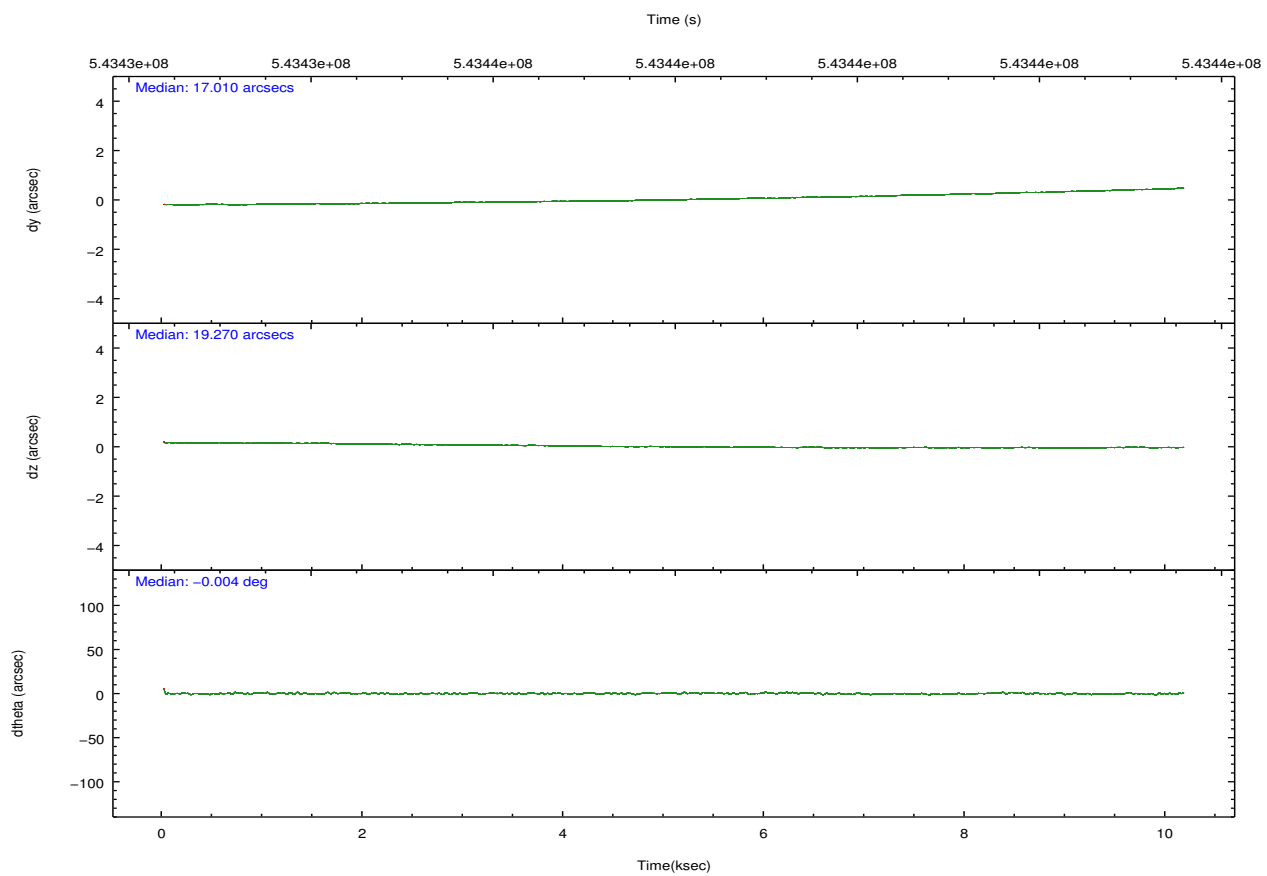
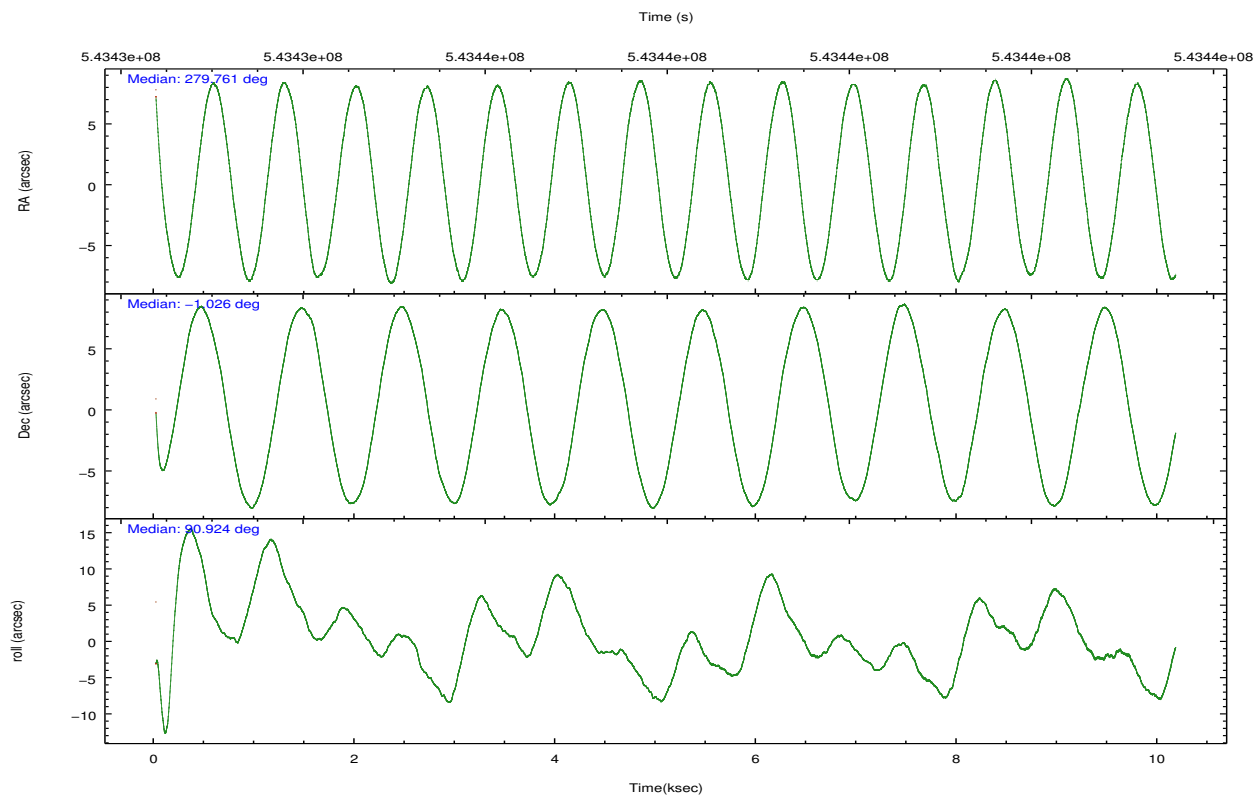
	ccd 0	ccd 1	ccd 2	ccd 3	ccd 7
grade 0 events	1787	2674	1813	1956	2446
	4%	6%	3%	4%	4%
grade 1 events	21	23	33	29	77
	0%	0%	0%	0%	0%
grade 2 events	1376	1331	1285	1238	5495
	3%	3%	2%	2%	9%
grade 3 events	513	565	504	533	2221
	1%	1%	1%	1%	3%
grade 4 events	509	555	513	523	2124
	1%	1%	1%	1%	3%
grade 5 events	2022	2194	1960	2407	6083
	5%	5%	4%	5%	10%
grade 6 events	1064	1237	985	1081	14313
	2%	3%	2%	2%	23%
grade 7 events	32111	30582	38530	34480	27820
	81%	78%	84%	81%	45%

2.2 Compared Parameters

Parameter	Planned	Actual	Parameter	Planned	Actual
Instrument	ACIS	ACIS	Obspar format version number	7	7
Detector	ACIS-01237	ACIS-01237	Obspar file type	PREDICTED	ACTUAL
Grating	NONE	NONE	Obspar update status	NONE	UPDATED
Data mode	VFAINT	VFAINT	CCD I0 on	Y	Y
Observation mode	POINTING	POINTING	CCD I1 on	Y	Y
[deg] Pointing RA	279.775431	279.7611320457457	CCD I2 on	Y	Y
[deg] Pointing Dec	-1.049476	-1.02586996835195	CCD I3 on	Y	Y
[deg] Pointing Roll	90.717684	90.92611349392669	CCD S0 on	N	N
[mm] SIM focus pos	-0.782348	-0.7809083437167272	CCD S1 on	N	N
[mm] SIM defocus	0	0.001439871863259334	CCD S2 on	N	N
[mm] SIM translation stage pos	-233.592463	-233.5874344608287	CCD S3 on	O1	Y
[mm] SIM translation stage offset	0	-0.005018542100998502	CCD S4 on	N	N
[s] Observation start time (MET)	543433085.184000	543431521.34163	CCD S5 on	N	N
Observation start date	2015-03-22T17:36:58	2015-03-22T17:12:01	Number of optional ACIS chips dropped	0	0
[s] Observation end time (MET)	543443085.184000	543443955.10483	On-chip summing requested	N	N
Observation end date	2015-03-22T20:23:38	2015-03-22T20:39:15	Subarray requested	NONE	NONE
Read mode	TIMED	TIMED	Alternating exposures requested	N	N
			[s] Primary exposure time	0.000000	3.1

2.3 Aspect



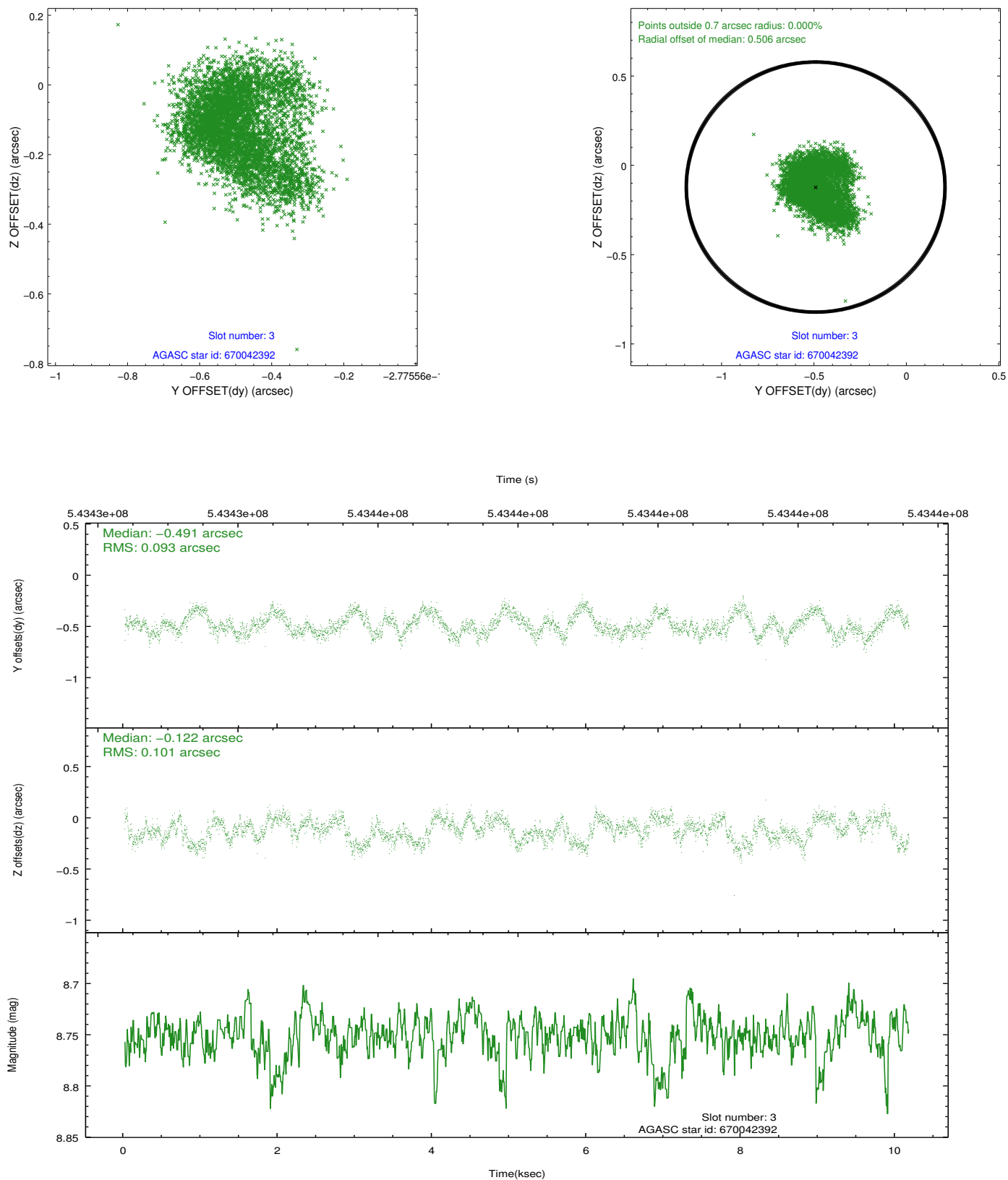


Slot Statistics

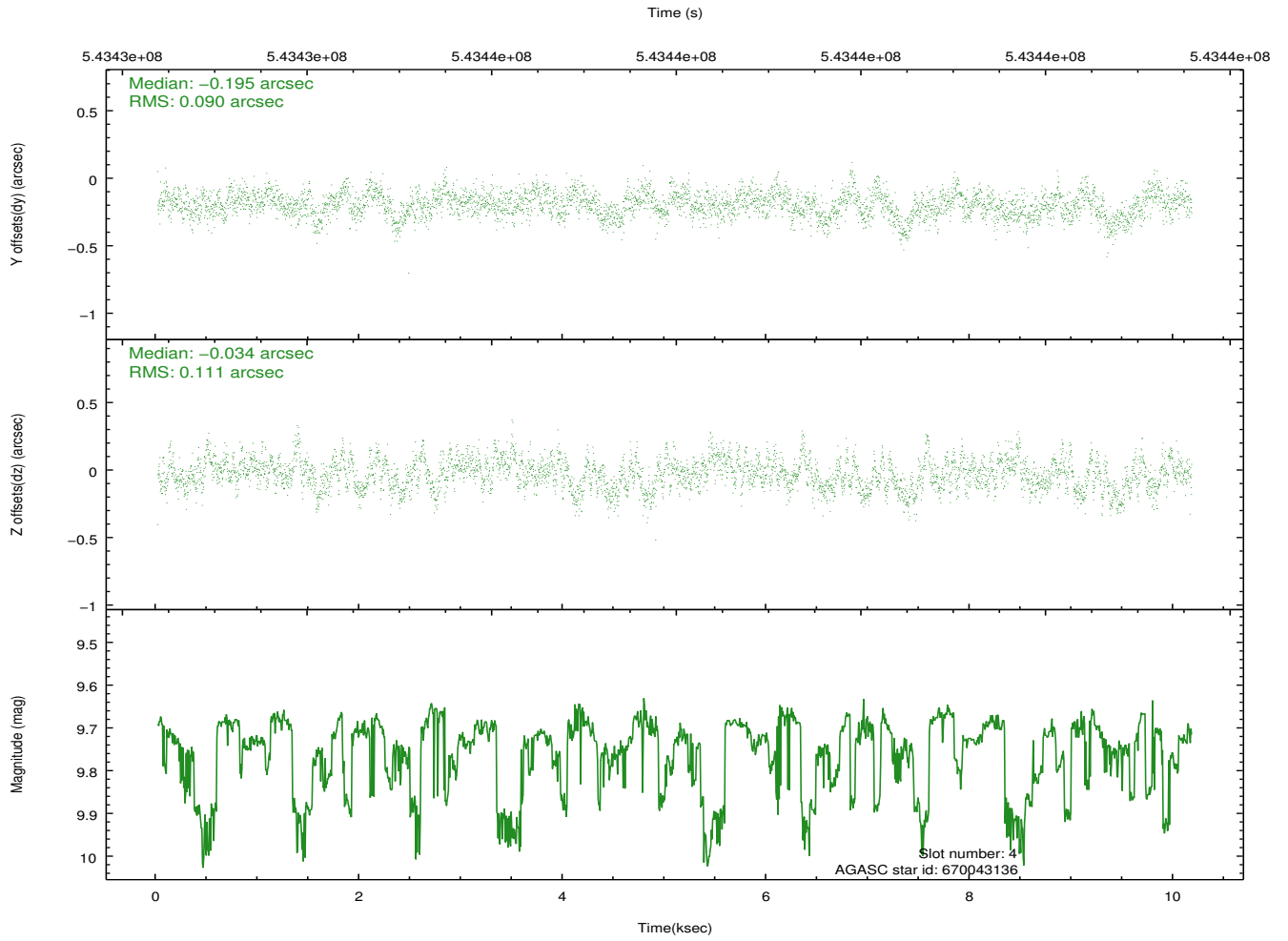
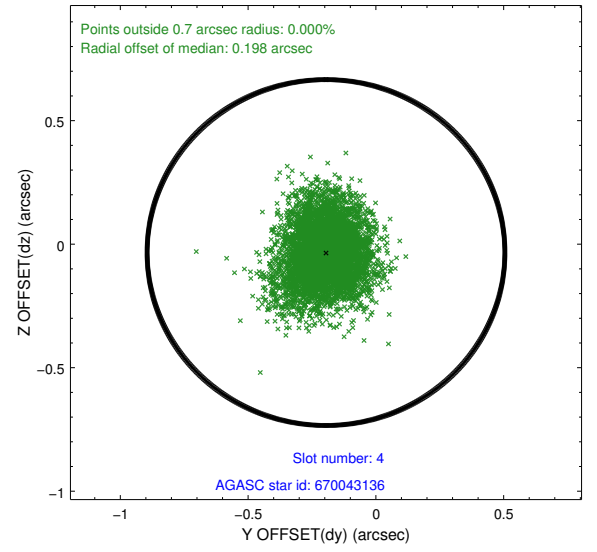
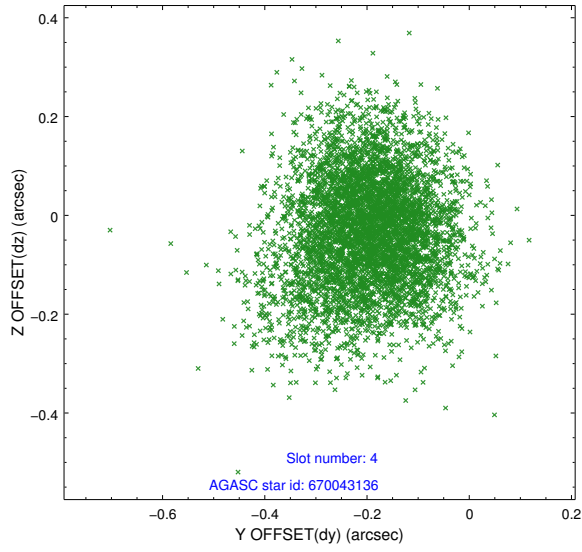
slot	status	used	id	mag	n_pts	med_dy	med_dz	dr1	dr2	ra	dec	mean_y	mean_z
0	FID		ACIS-I-1	7.25	2479	-0.030	0.003	0.011	0.017	0.000000	0.000000	922.34	-842.98
1	FID		ACIS-I-4	7.18	2479	0.303	0.036	0.012	0.018	0.000000	0.000000	2142.94	1056.64
2	FID		ACIS-I-5	7.23	2479	-0.370	0.032	0.009	0.015	0.000000	0.000000	-1825.39	1054.95
3	GUIDE	used	670042392	8.75	4951	-0.491	-0.122	0.147	0.233	279.315464	-0.922358	477.17	1650.09
4	GUIDE	used	670043136	9.74	4953	-0.195	-0.034	0.151	0.251	279.177670	-0.494181	2025.44	2126.77
5	GUIDE	used	670177864	8.65	4956	0.315	0.333	0.124	0.202	279.958633	-1.289079	-869.98	-647.68
6	GUIDE	used	670043504	9.83	4953	0.311	-0.145	0.199	0.311	279.132346	-0.568773	1759.41	2293.07
7	GUIDE	used	670042784	9.28	4954	0.058	-0.033	0.136	0.232	279.320532	-1.467092	-1482.31	1656.01

2.4 Star Slots

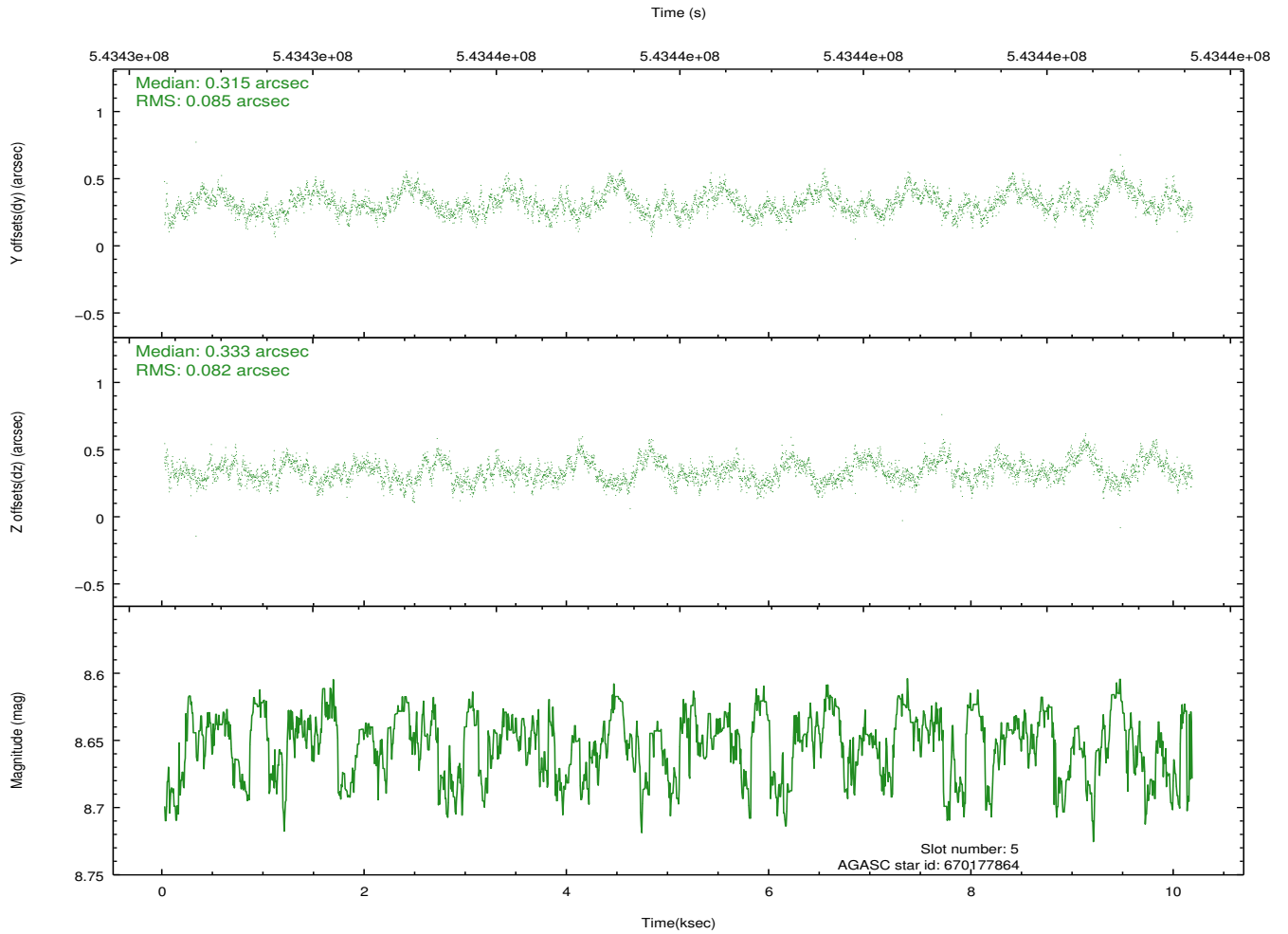
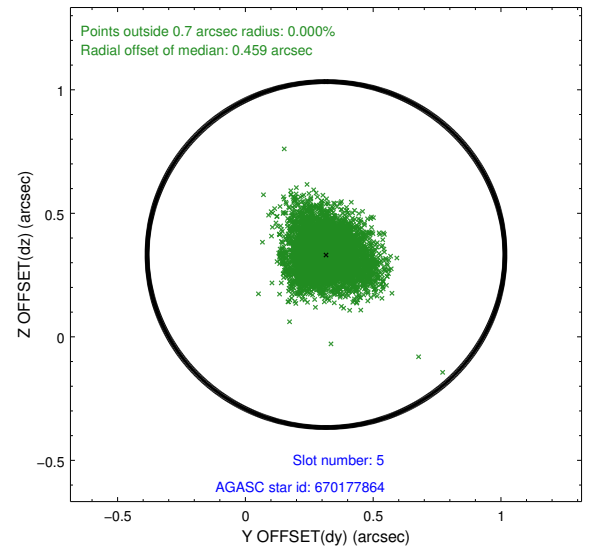
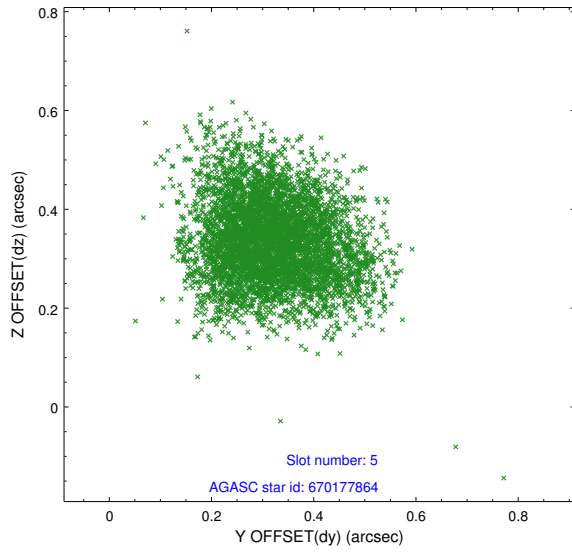
2.4.1 Slot 3



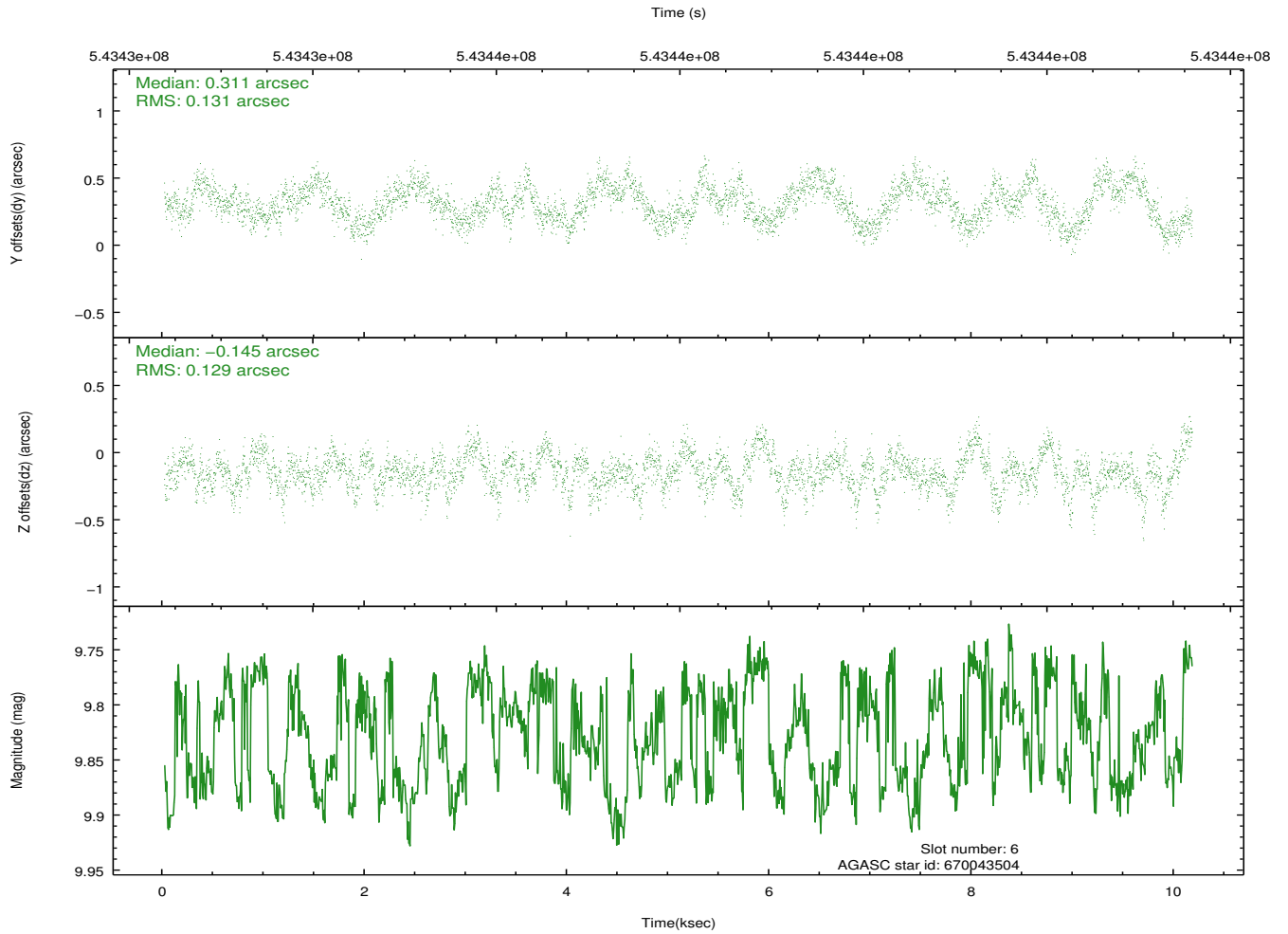
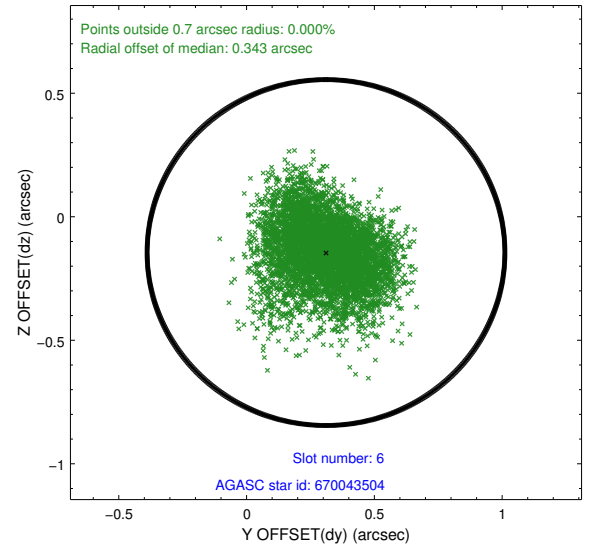
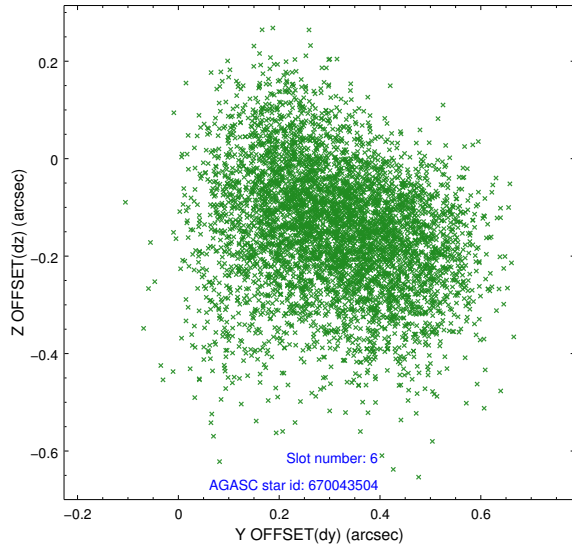
2.4.2 Slot 4



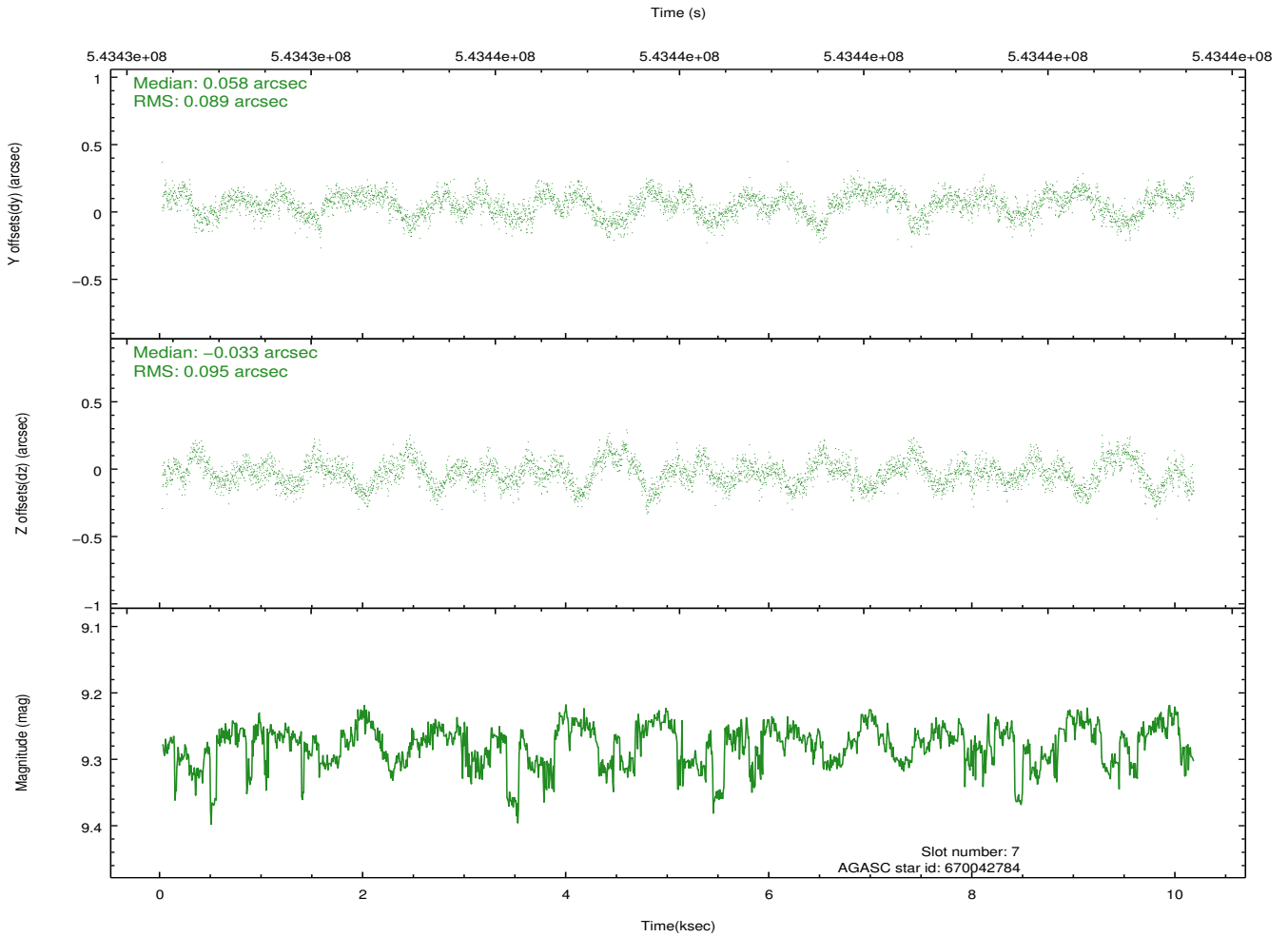
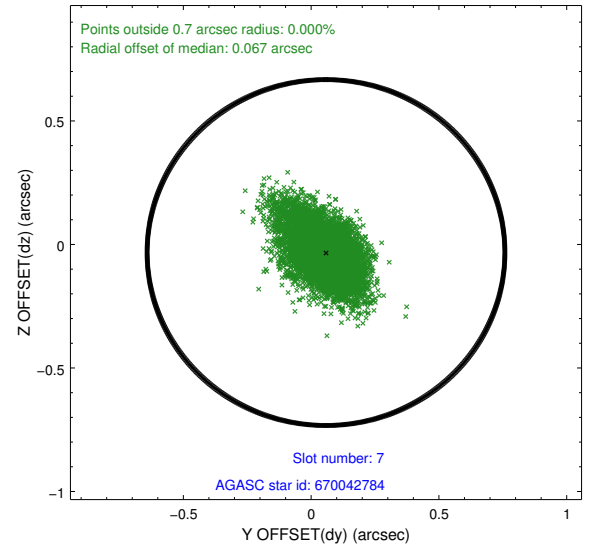
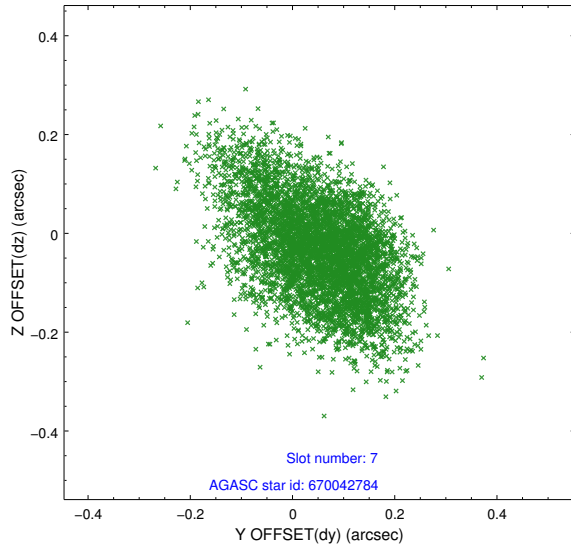
2.4.3 Slot 5



2.4.4 Slot 6

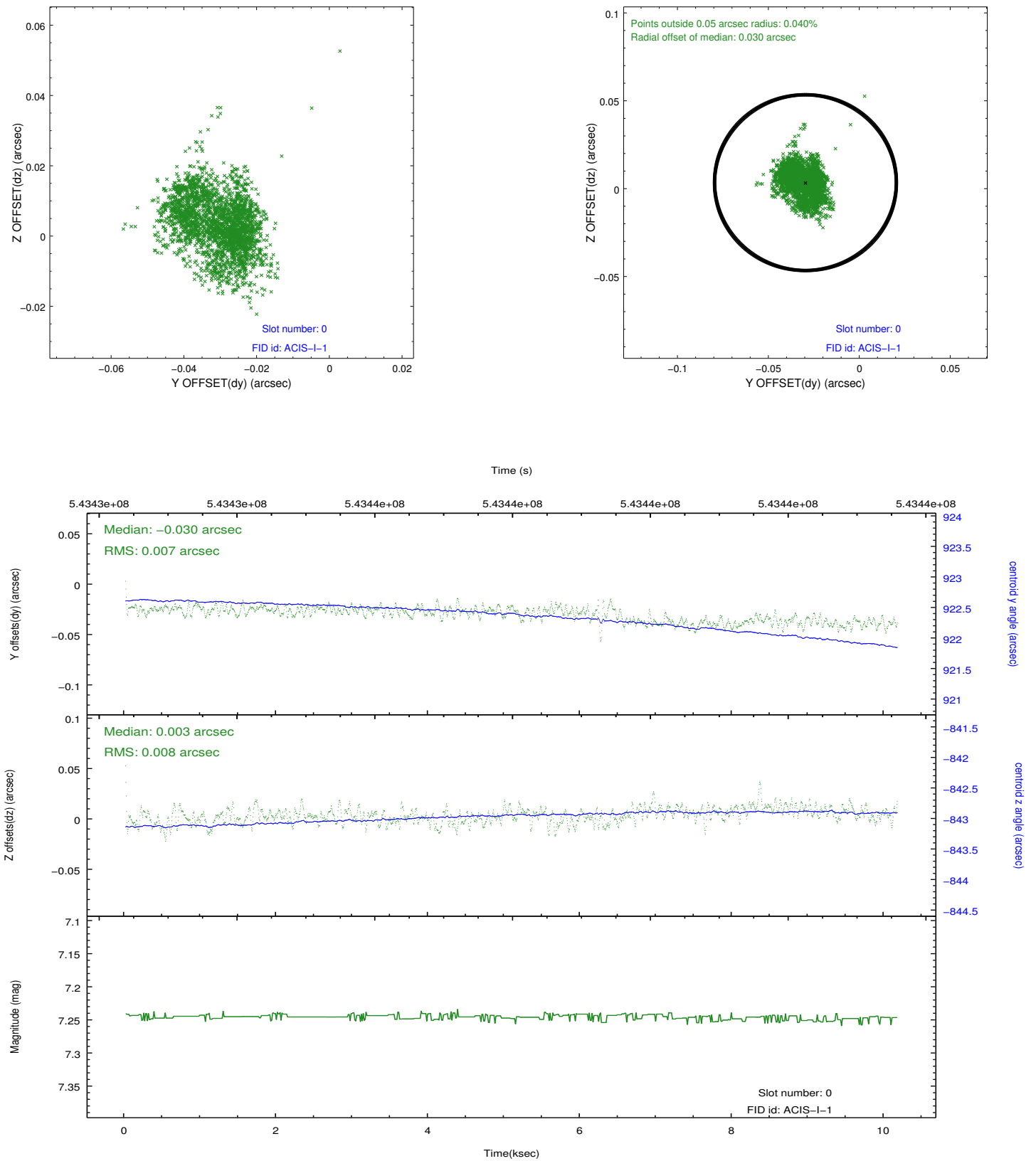


2.4.5 Slot 7

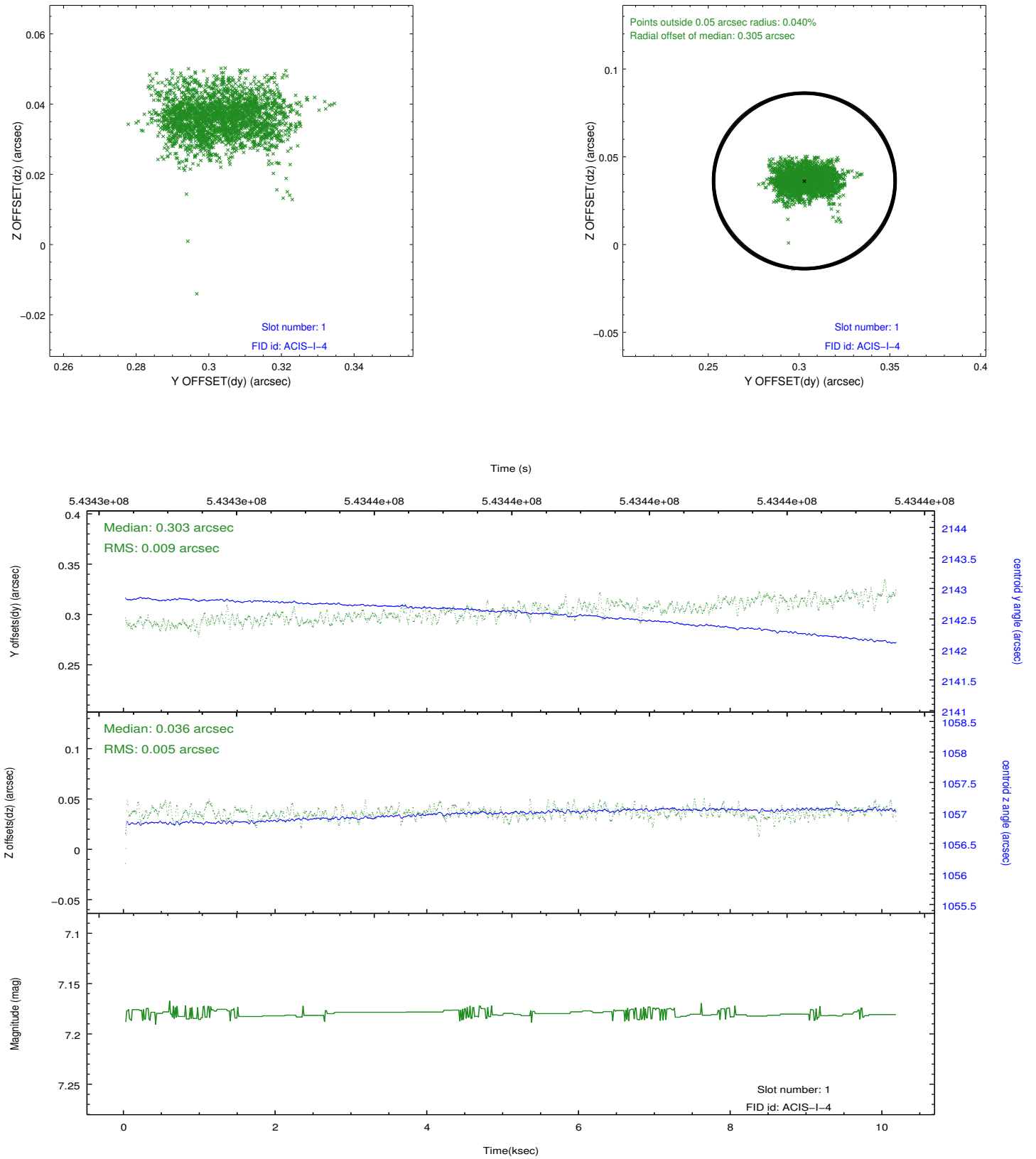


2.5 FID Slots

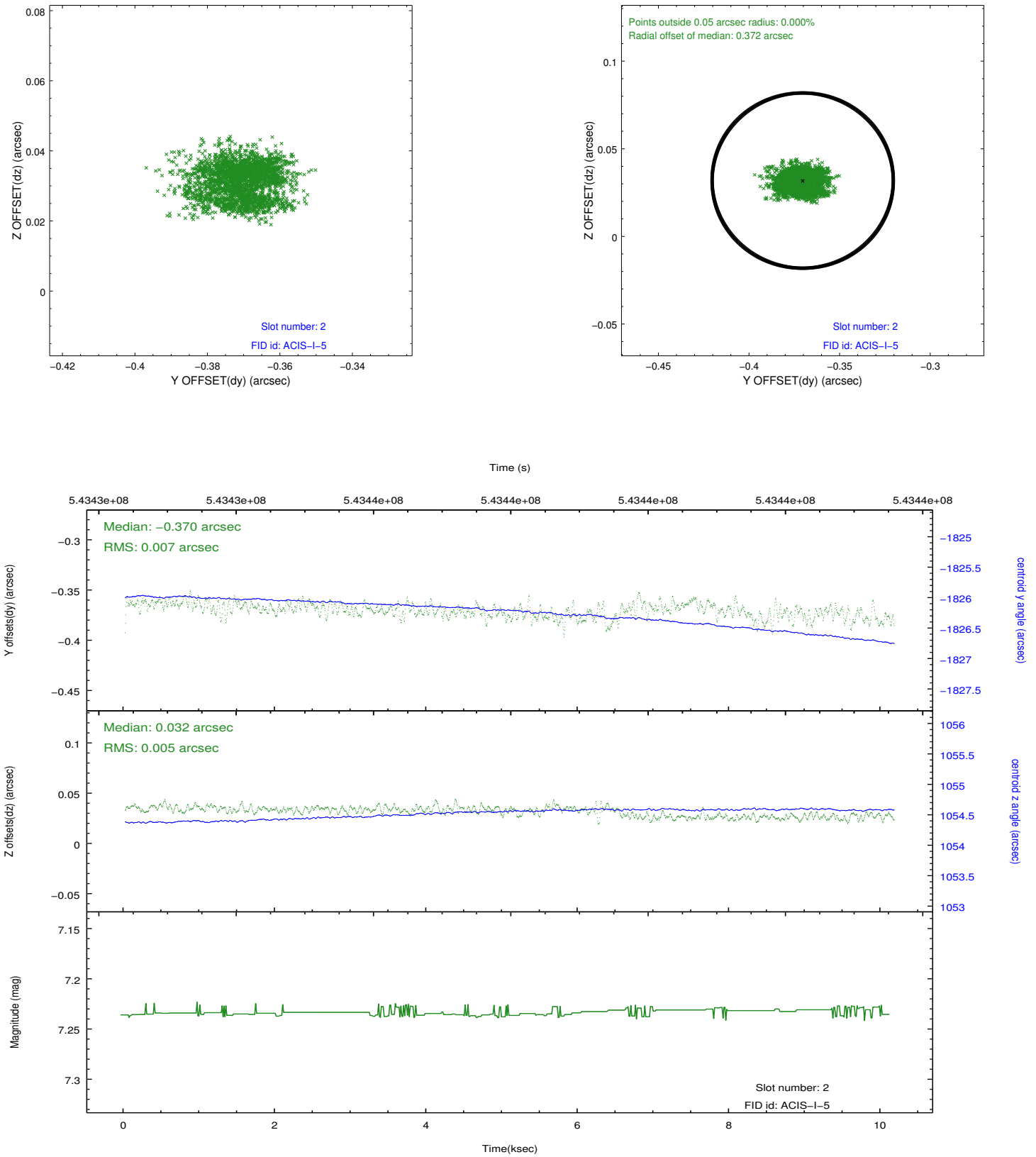
2.5.1 Slot 0



2.5.2 Slot 1



2.5.3 Slot 2



A Summary

A.1 Status

V&V Scientist	Joy Nichols
V&V Date (YYYY-MM-DD)	2015.03.23
V&V Edition	1
V&V Disposition and Status	OK
V&V Charge Time	10.065700077534

A.2 Comments