

V&V Reference Report

L2 ASCDS Version : 10.4.2.1

Observation 16825 - L2 Version 1
Chandra X-Ray Center

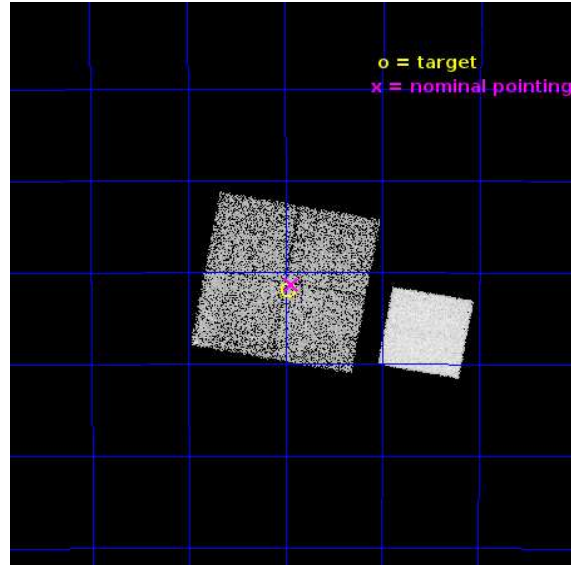
L2 Processing Date : Oct 15 2015

Contents

1	Front	2
2	OBI	3
2.1	OBI	3
2.1.1	Images	3
2.1.2	Bias	3
2.1.3	Parameters	4
2.1.4	Events	4
2.2	Compared Parameters	5
2.3	Aspect	6
2.4	Star Slots	9
2.4.1	Slot 3	9
2.4.2	Slot 4	10
2.4.3	Slot 5	11
2.4.4	Slot 6	12
2.4.5	Slot 7	13
2.5	FID Slots	14
2.5.1	Slot 0	14
2.5.2	Slot 1	15
2.5.3	Slot 2	16
A	Summary	17
A.1	Status	17
A.2	Comments	17

1 Front

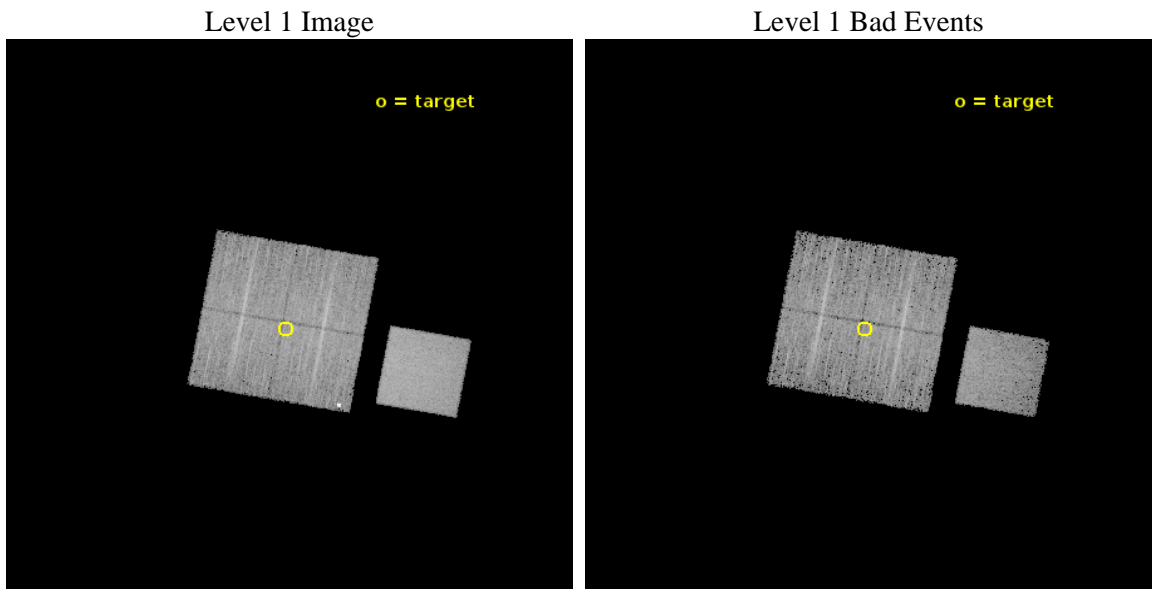
seq_num	502343	Sequence number
obs_id	16825	Observation id
title	Snap-shot survey of unidentified Fermi sources	Proposal title
observer	Dr. Blagoy Rangelov	Principal investigator
object	2FGL J0842.9-4721	Source name
dtcycle	0	
cycle	P	events from which exps? Prim/Second/Both
ra_targ	130.74125	Observer's specified target RA [deg]
dec_targ	-47.364806	Observer's specified target Dec [deg]
ra_nom	130.73392607011	Nominal RA [deg]
dec_nom	-47.356111798315	Nominal Dec [deg]
roll_nom	100.39960963331	Nominal Roll [deg]
revision	1	Processing version of data
ontime	10062.60007751	Sum of GTIs [s]
livetime	9931.1247995188	Livetime [s]
ontime0	10062.60007751	Sum of GTIs [s]
ontime1	10062.60007751	Sum of GTIs [s]
ontime2	10056.318037033	Sum of GTIs [s]
ontime3	10062.60007751	Sum of GTIs [s]
ontime7	10062.60007751	Sum of GTIs [s]
l2events	56069	Number of level 2 events



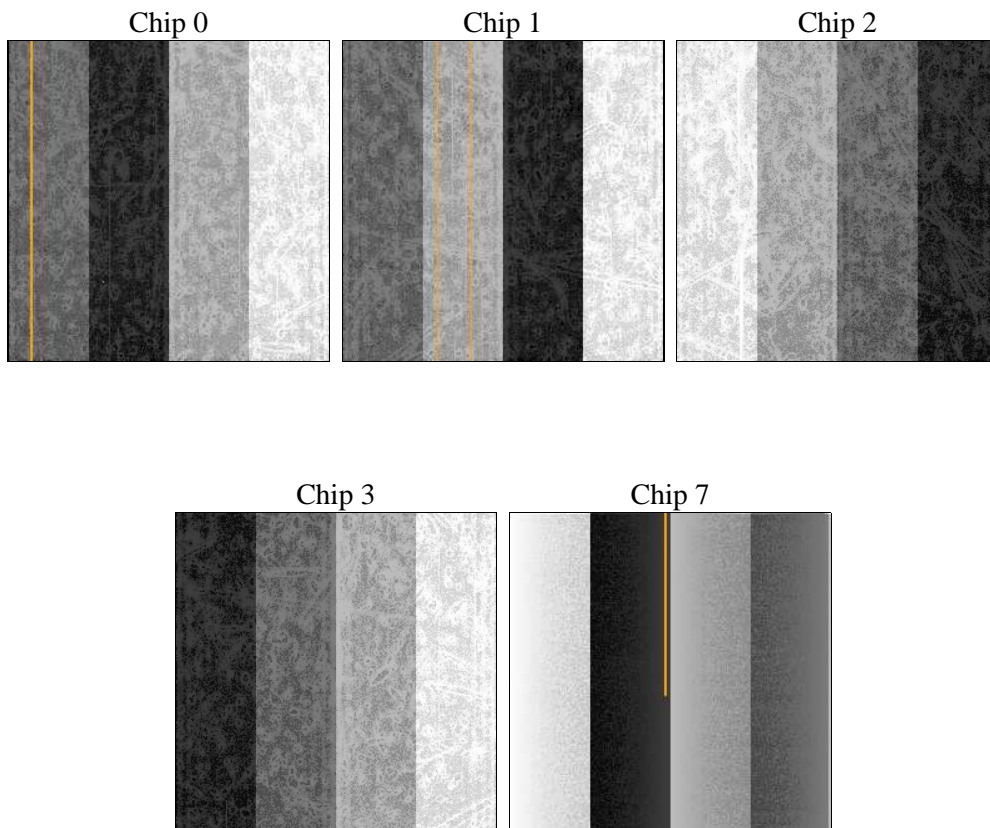
2 OBI

2.1 OBI

2.1.1 Images



2.1.2 Bias



2.1.3 Parameters

obi_num	0	Obi number	sched_exp_time	10000.000000	[s] Scheduled observation exposure time
ascdsver	10.4.2.1	Processing system revision	ontime	10062.60007751	Sum of GTIs [s]
caldsver	4.6.10a	 	ontime0	10062.60007751	Sum of GTIs [s]
date	2015-10-15T14:51:07	Date and time of file creation	ontime1	10062.60007751	Sum of GTIs [s]
revision	1	Processing version of data	ontime2	10056.318037033	Sum of GTIs [s]
			ontime3	10062.60007751	Sum of GTIs [s]
			ontime7	10062.60007751	Sum of GTIs [s]
			l1events	287248	Number of level 1 events

2.1.4 Events

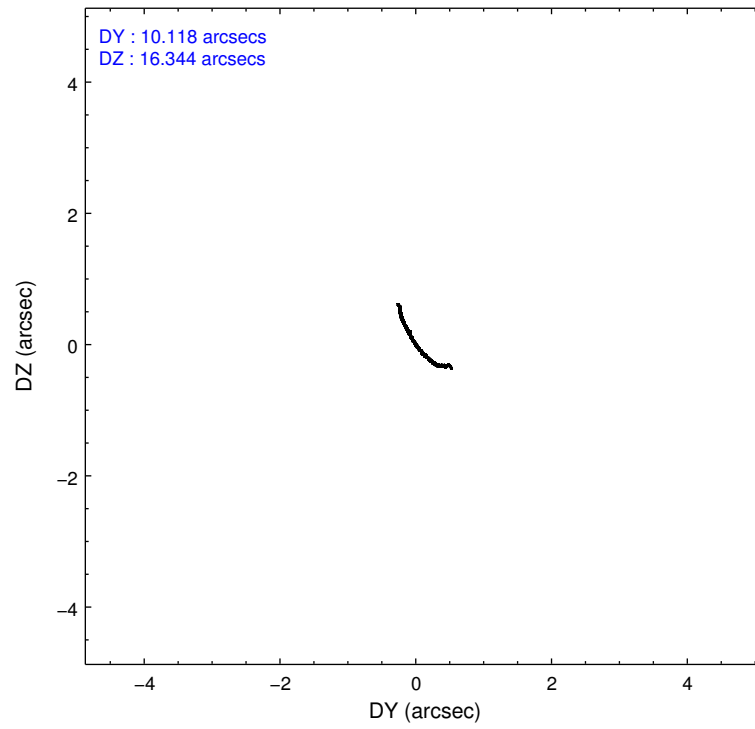
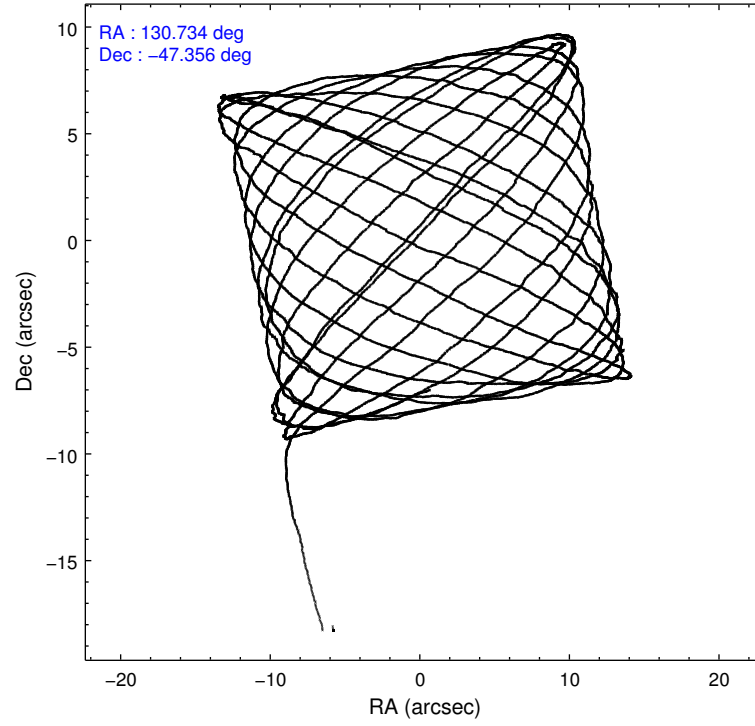
	ccd 0	ccd 1	ccd 2	ccd 3	ccd 7
level 1 events	50582	51416	53493	56759	74998
rejected events	43973	43884	46867	47438	41814
rejected %	86%	85%	87%	83%	55%

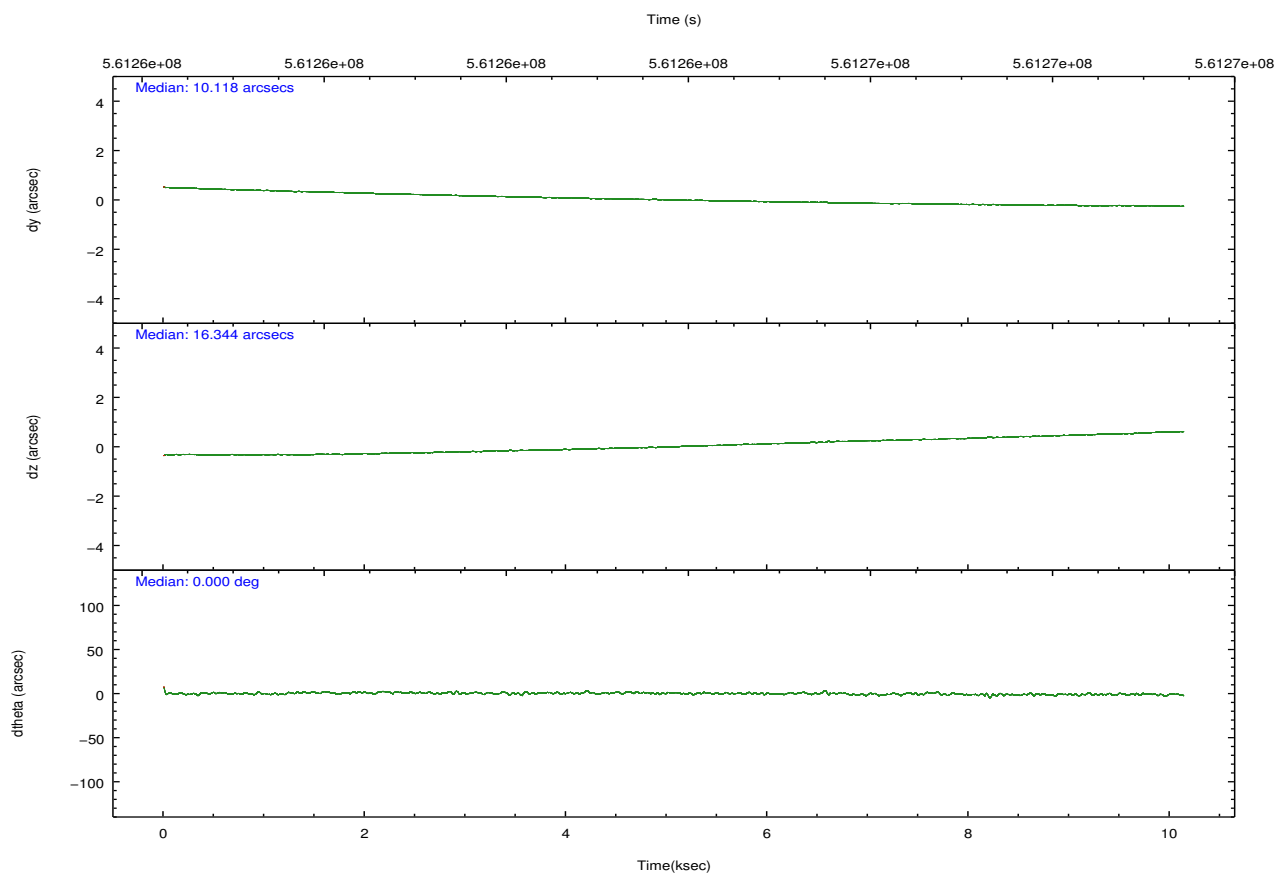
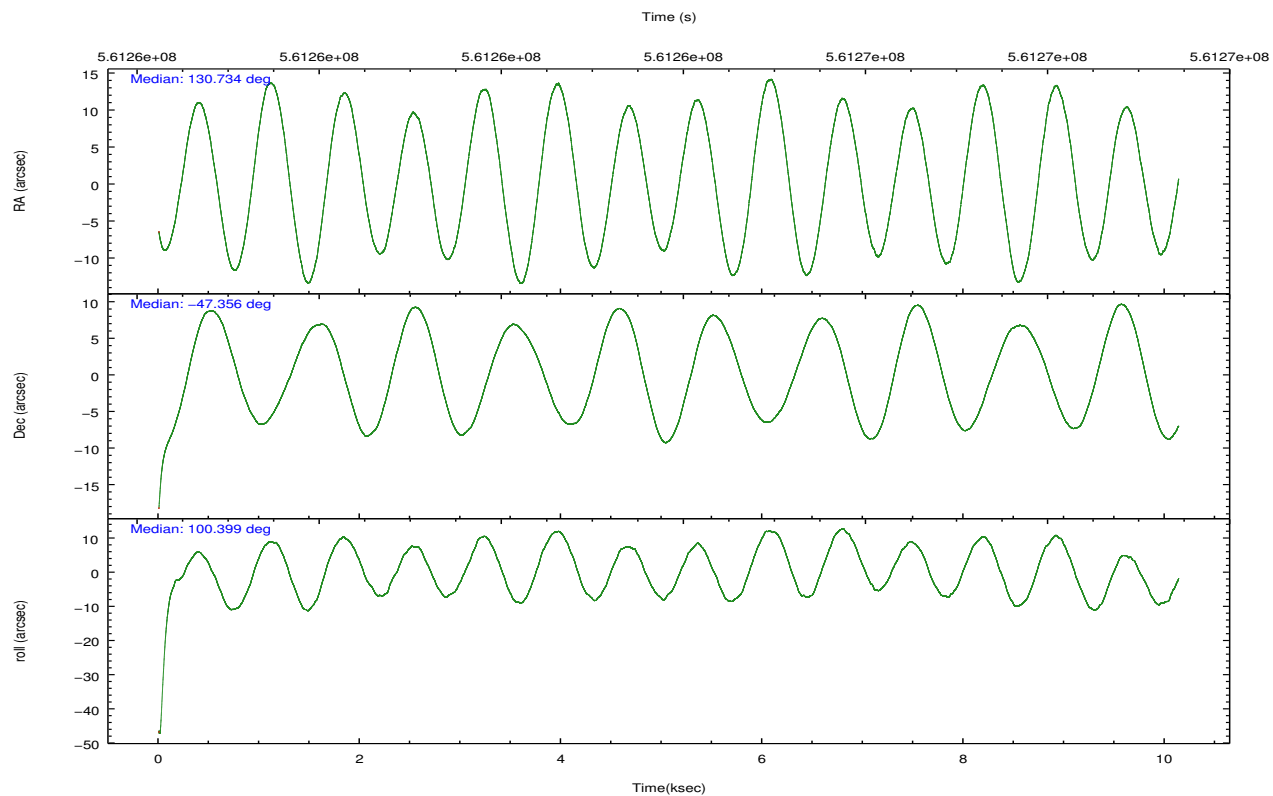
	ccd 0	ccd 1	ccd 2	ccd 3	ccd 7
grade 0 events	2601	2977	2951	5489	3665
	5%	5%	5%	9%	4%
grade 1 events	33	30	31	37	101
	0%	0%	0%	0%	0%
grade 2 events	1482	1752	1326	1337	7251
	2%	3%	2%	2%	9%
grade 3 events	652	602	632	586	2559
	1%	1%	1%	1%	3%
grade 4 events	593	623	596	646	2506
	1%	1%	1%	1%	3%
grade 5 events	2303	2311	2108	2643	6852
	4%	4%	3%	4%	9%
grade 6 events	1282	1581	1122	1265	17211
	2%	3%	2%	2%	22%
grade 7 events	41636	41540	44727	44756	34853
	82%	80%	83%	78%	46%

2.2 Compared Parameters

Parameter	Planned	Actual	Parameter	Planned	Actual
Instrument	ACIS	ACIS	Obspar format version number	7	7
Detector	ACIS-01237	ACIS-01237	Obspar file type	PREDICTED	ACTUAL
Grating	NONE	NONE	Obspar update status	NONE	UPDATED
Data mode	VFAINT	VFAINT	CCD I0 on	Y	Y
Observation mode	POINTING	POINTING	CCD I1 on	Y	Y
[deg] Pointing RA	130.760501	130.7339260701143	CCD I2 on	Y	Y
[deg] Pointing Dec	-47.377029	-47.35611179831496	CCD I3 on	Y	Y
[deg] Pointing Roll	100.210534	100.3996096333124	CCD S0 on	N	N
[mm] SIM focus pos	-0.782348	-0.7809083437167272	CCD S1 on	N	N
[mm] SIM defocus	0	0.001439871863259334	CCD S2 on	N	N
[mm] SIM translation stage pos	-233.592463	-233.5874344608287	CCD S3 on	O1	Y
[mm] SIM translation stage offset	0	-0.005018542100998502	CCD S4 on	N	N
[s] Observation start time (MET)	561258897.184000	561257741.44582	CCD S5 on	N	N
Observation start date	2015-10-15T01:13:49	2015-10-15T00:55:41	Number of optional ACIS chips dropped	0	0
[s] Observation end time (MET)	561268897.184000	561269709.859	On-chip summing requested	N	N
Observation end date	2015-10-15T04:00:29	2015-10-15T04:15:09	Subarray requested	NONE	NONE
Read mode	TIMED	TIMED	Alternating exposures requested	N	N
			[s] Primary exposure time	0.000000	3.1

2.3 Aspect



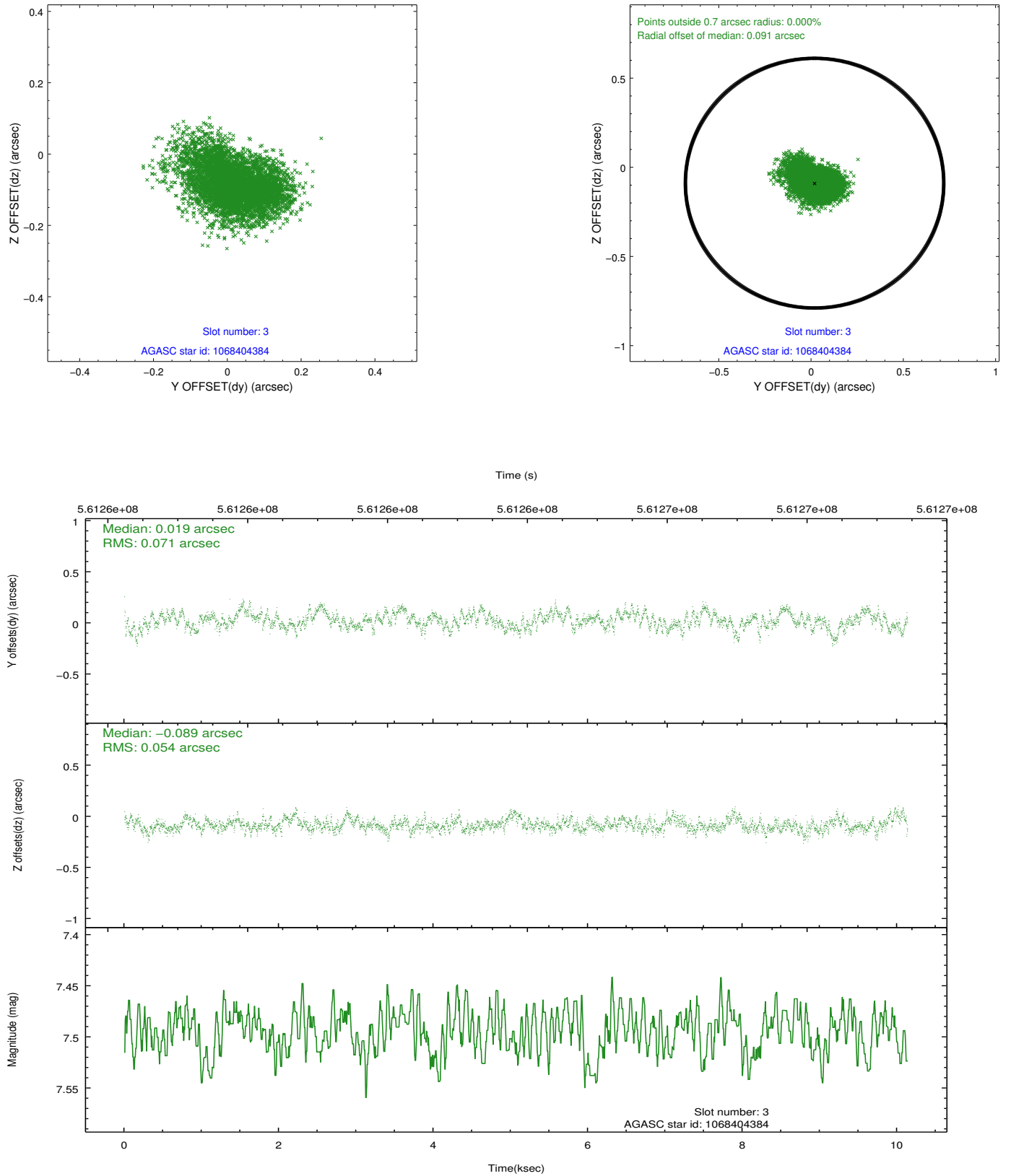


Slot Statistics

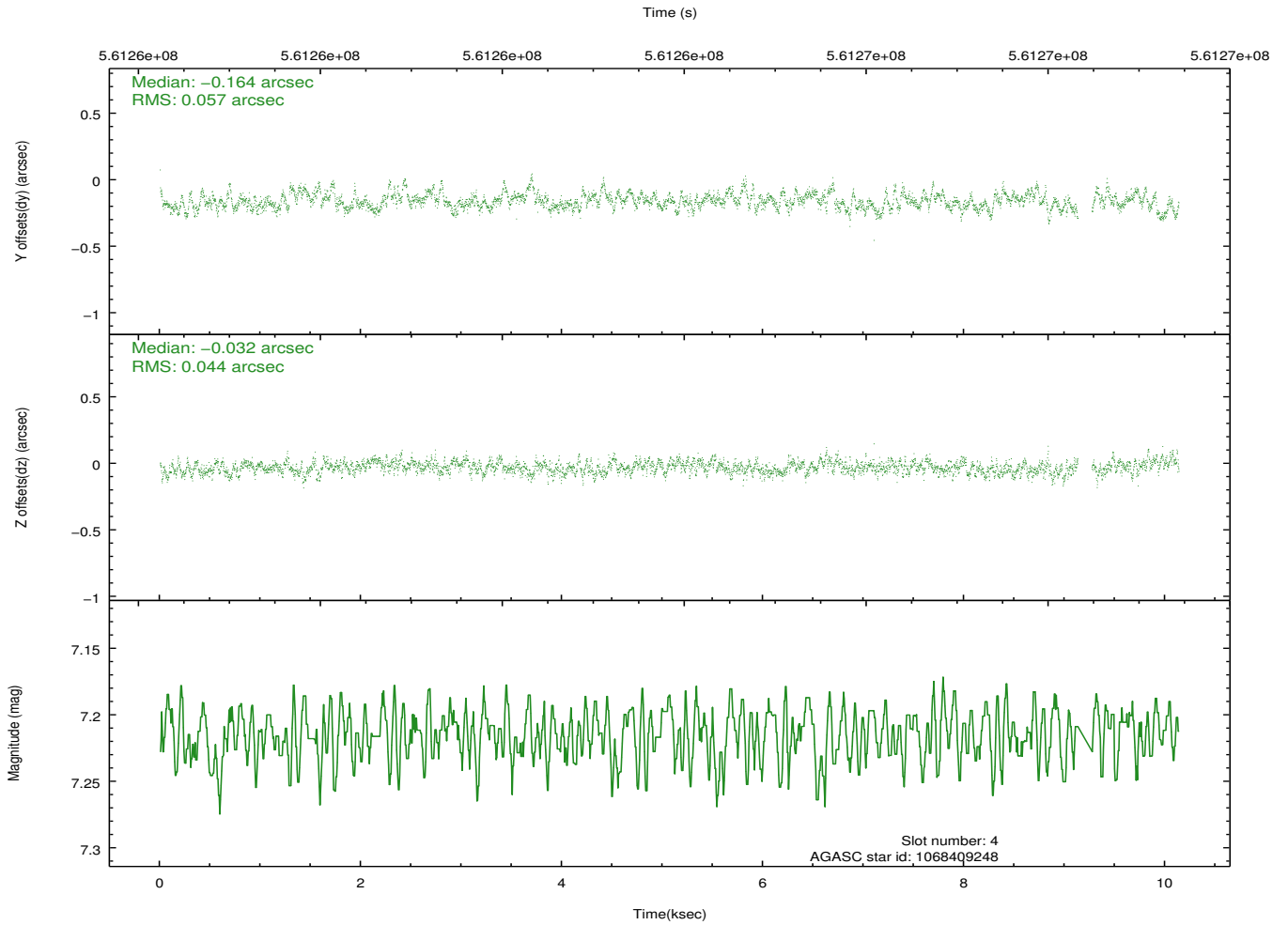
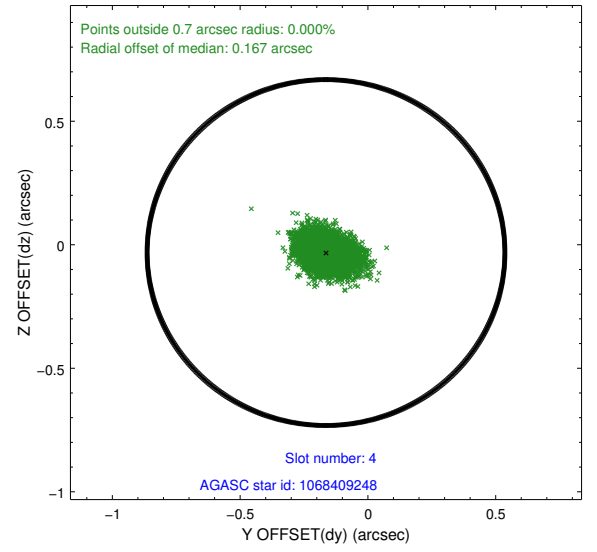
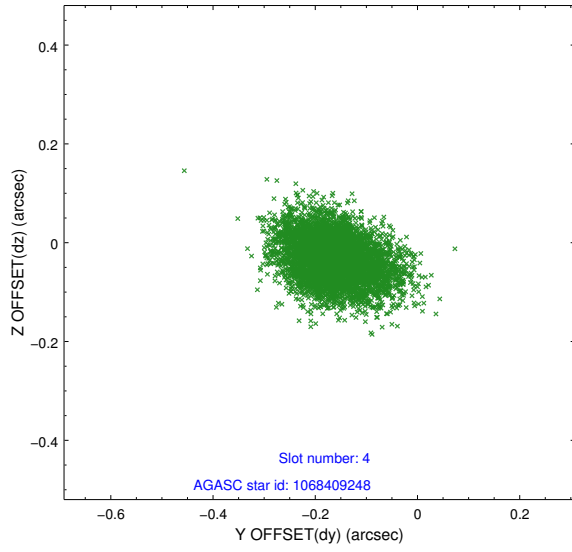
slot	status	used	id	mag	n_pts	med_dy	med_dz	dr1	dr2	ra	dec	mean_y	mean_z
0	FID		ACIS-I-2	7.17	2473	-0.300	-0.191	0.011	0.018	0.000000	0.000000	-765.08	-846.55
1	FID		ACIS-I-4	7.19	2473	0.226	0.173	0.011	0.017	0.000000	0.000000	2149.35	1059.60
2	FID		ACIS-I-6	7.25	2473	-0.025	0.080	0.016	0.026	0.000000	0.000000	396.06	1702.36
3	GUIDE	used	1068404384	7.49	4944	0.019	-0.089	0.095	0.160	130.947952	-46.798995	1965.95	-823.39
4	GUIDE	used	1068409248	7.21	4878	-0.164	-0.032	0.075	0.128	130.697365	-46.807258	2048.29	-209.35
5	GUIDE	used	1068899584	9.73	4939	-0.177	-0.356	0.187	0.302	130.040927	-48.080611	-2193.51	2153.29
6	GUIDE	used	1068912352	8.24	4941	0.183	0.144	0.081	0.130	130.532143	-47.924641	-1843.34	892.32
7	GUIDE	used	1068905184	8.82	4944	0.135	0.336	0.091	0.151	131.803136	-47.906162	-2337.37	-2135.22

2.4 Star Slots

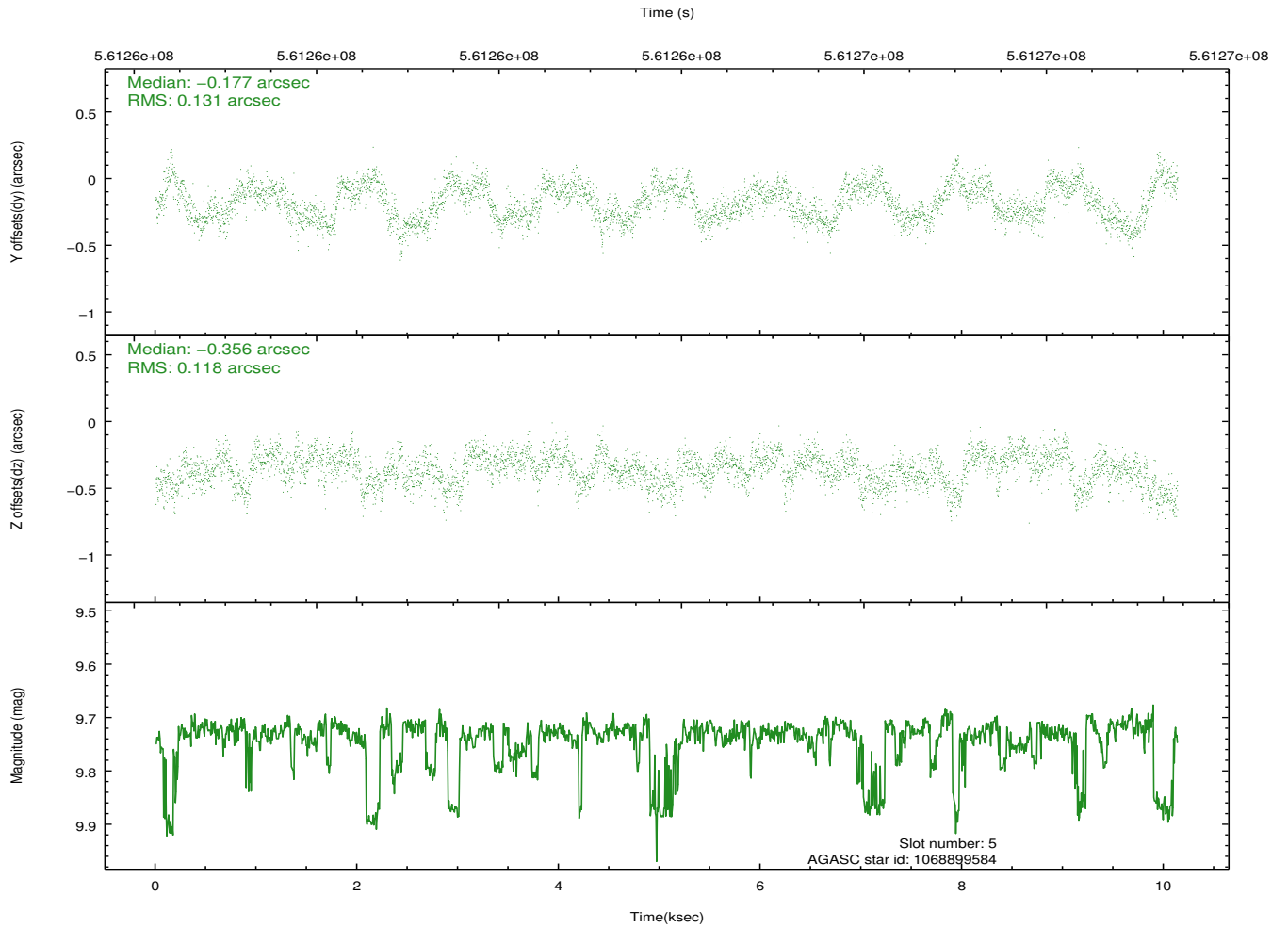
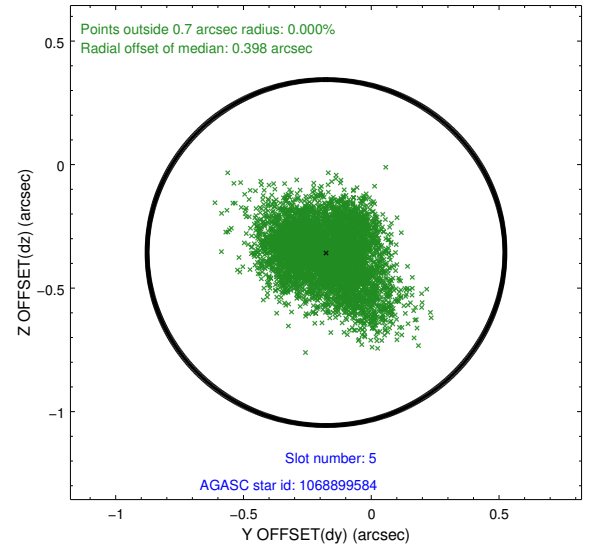
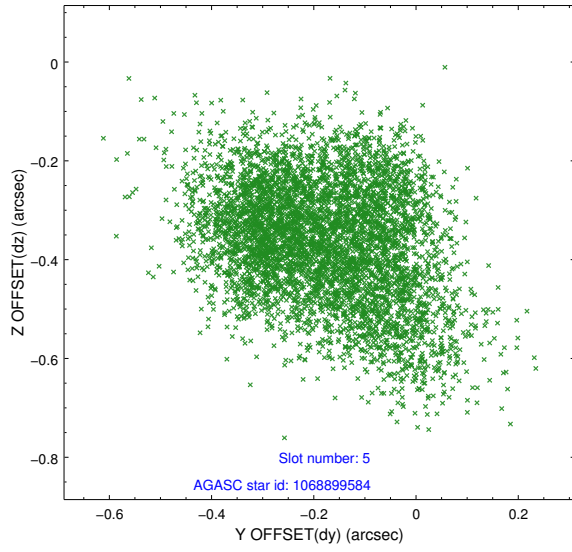
2.4.1 Slot 3



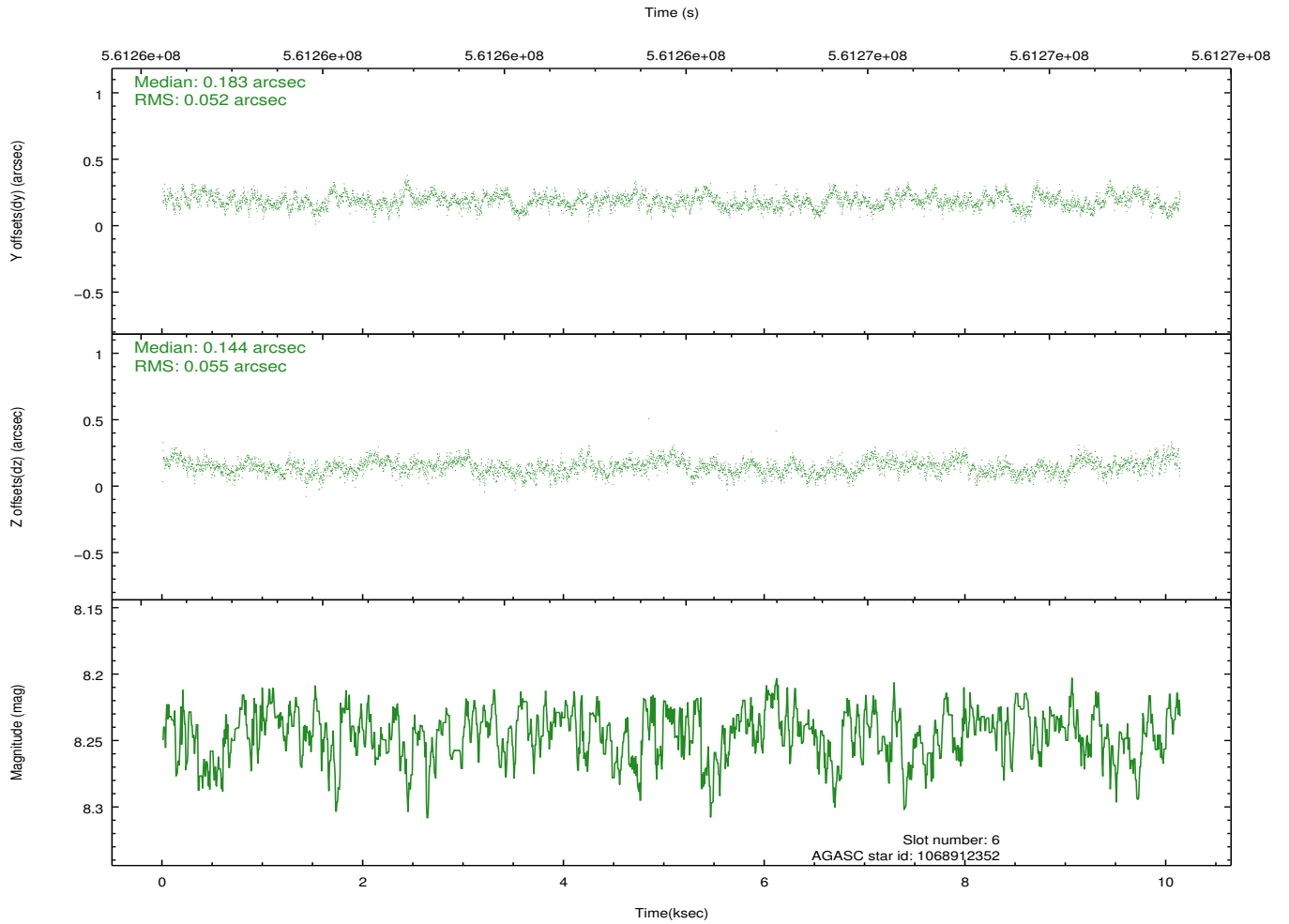
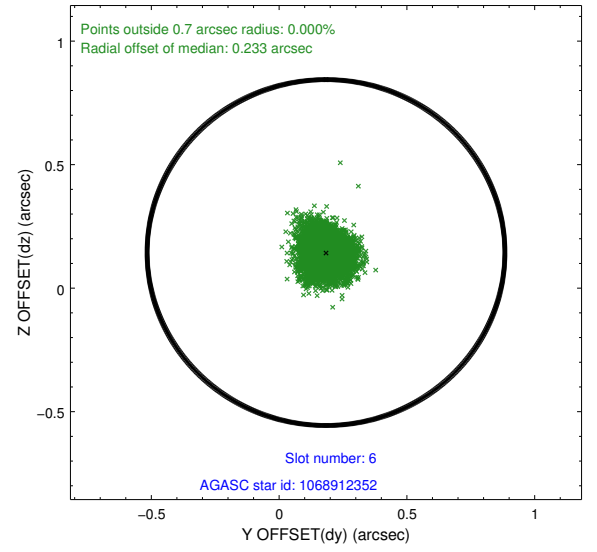
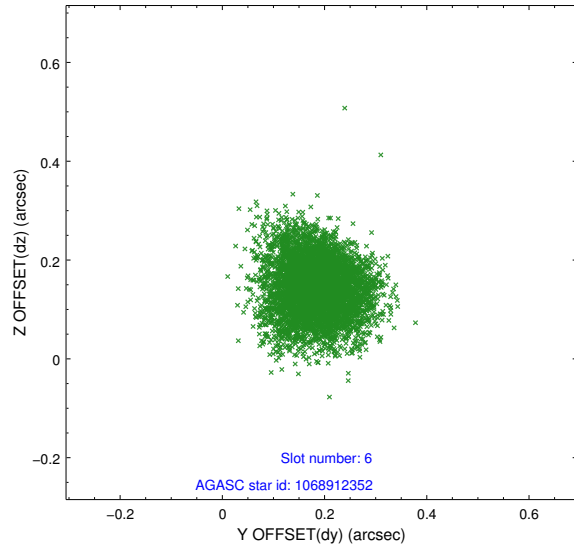
2.4.2 Slot 4



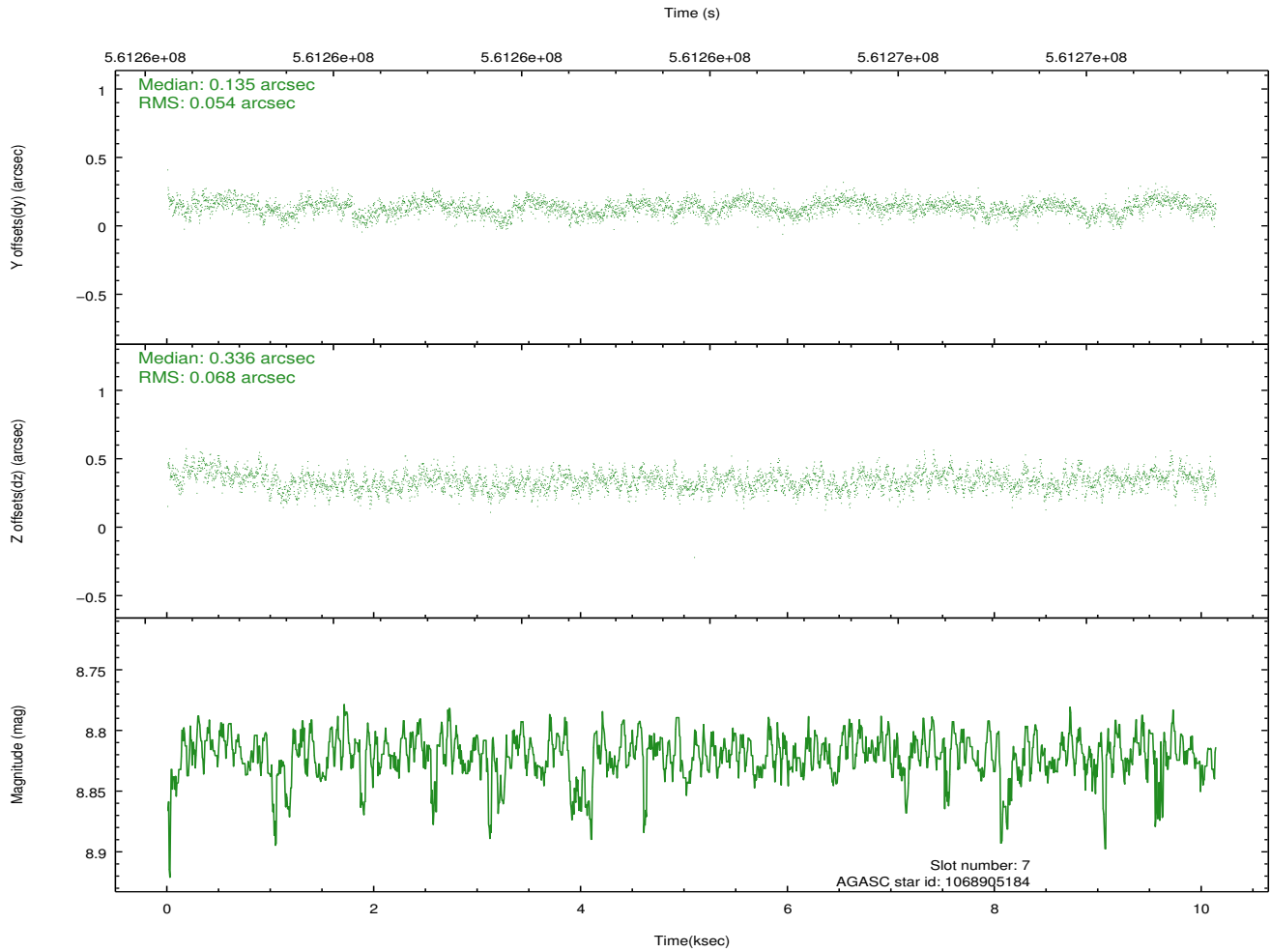
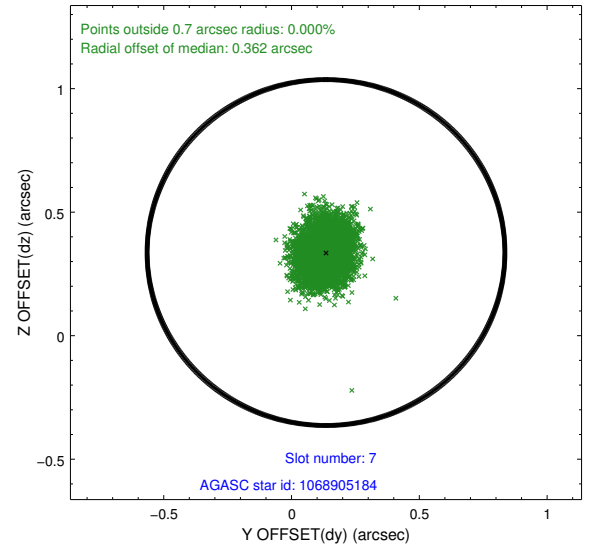
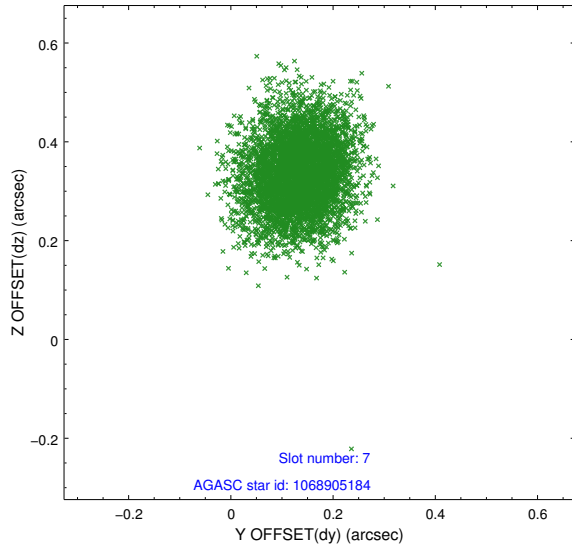
2.4.3 Slot 5



2.4.4 Slot 6

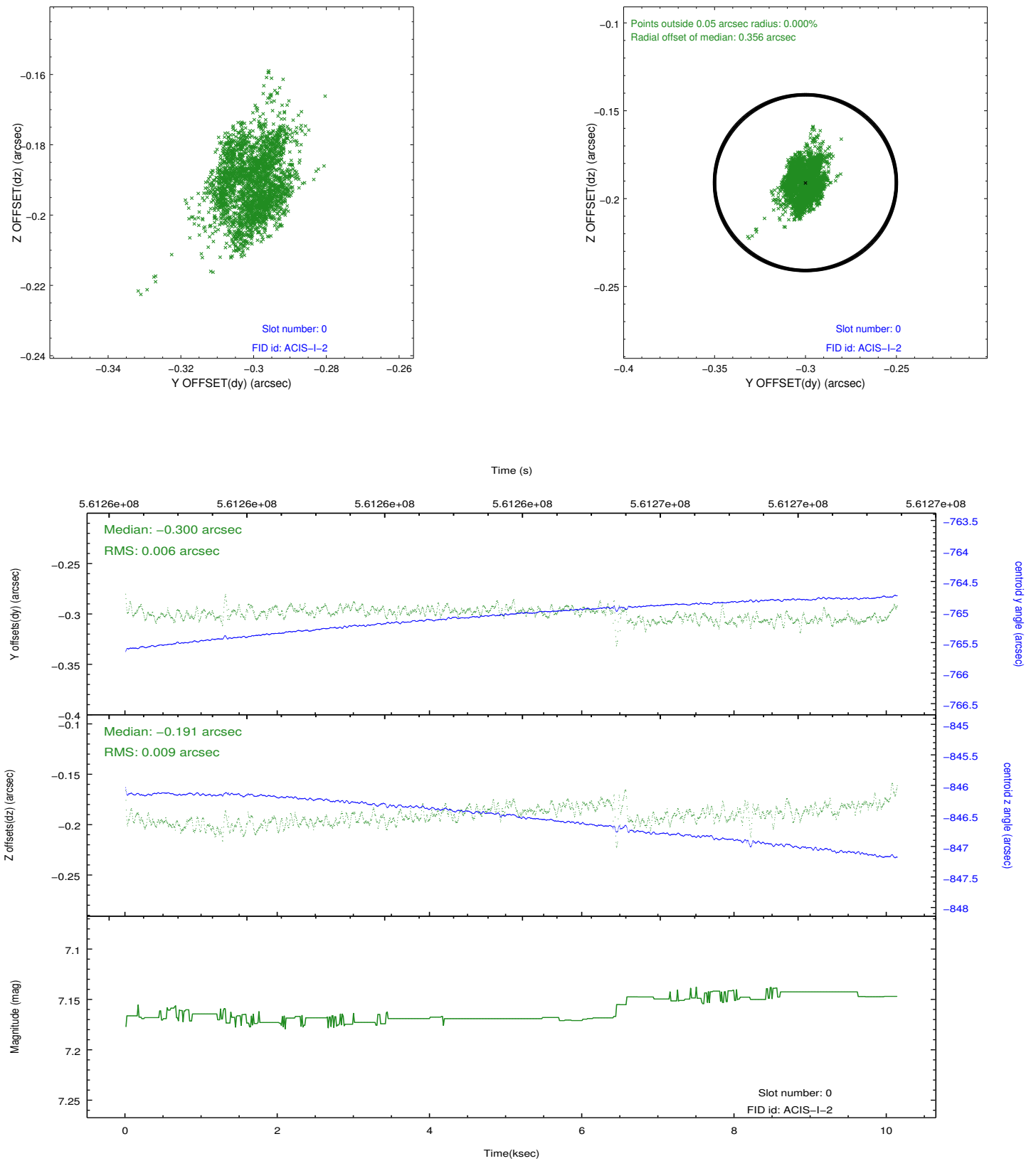


2.4.5 Slot 7

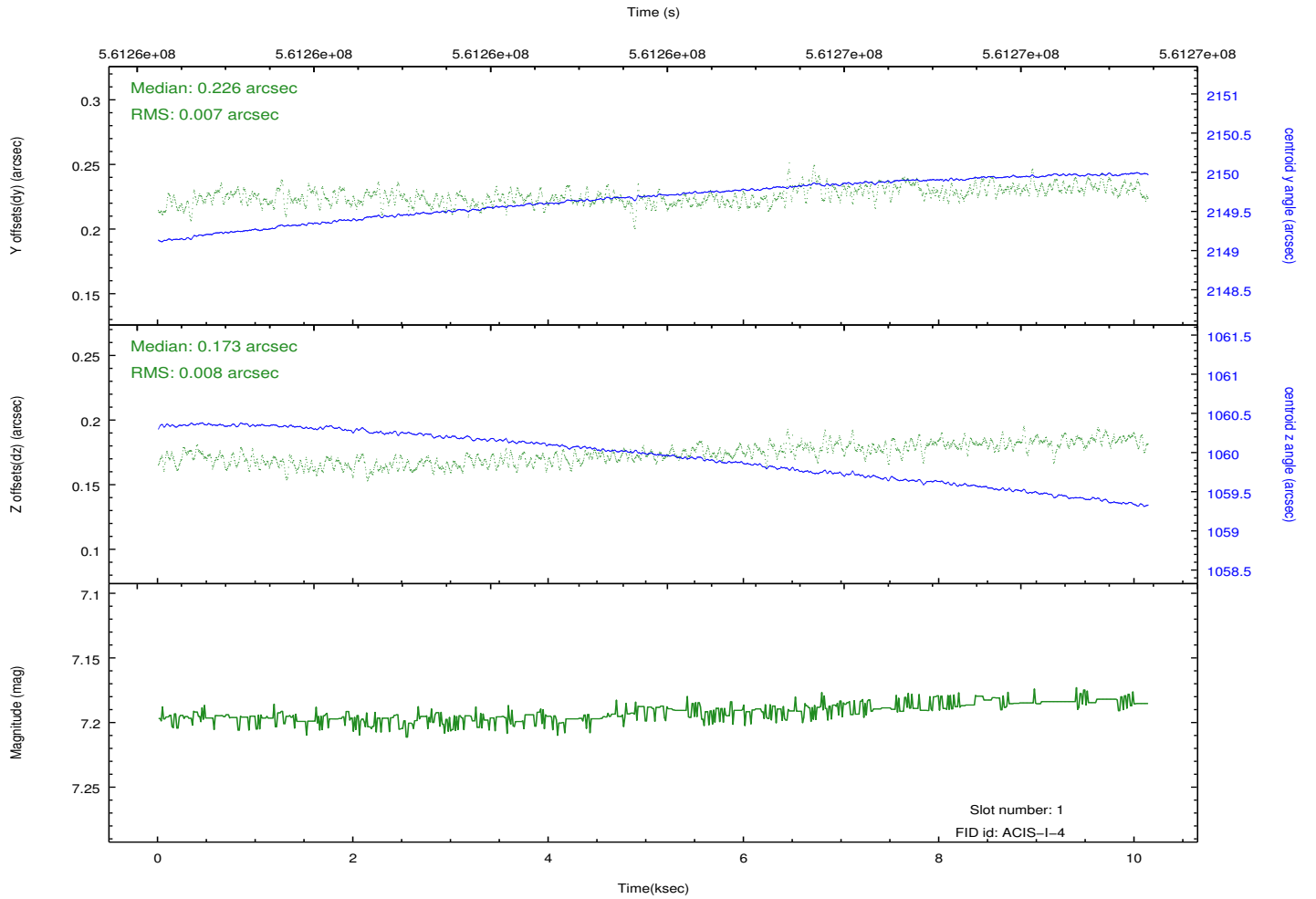
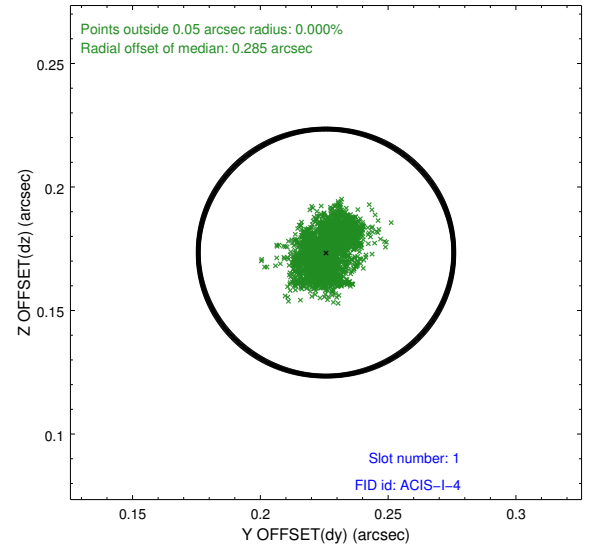
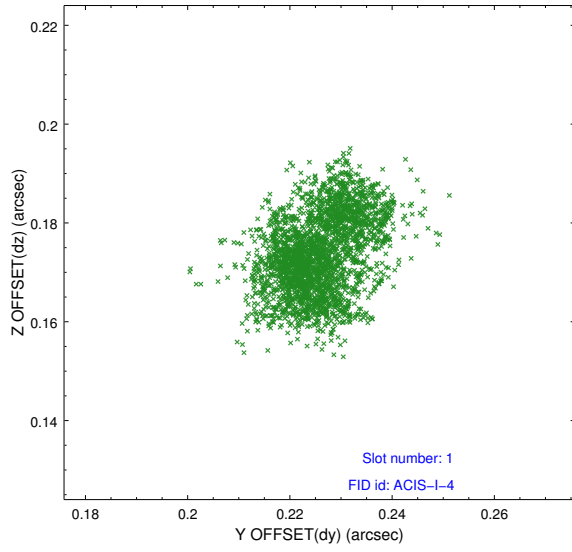


2.5 FID Slots

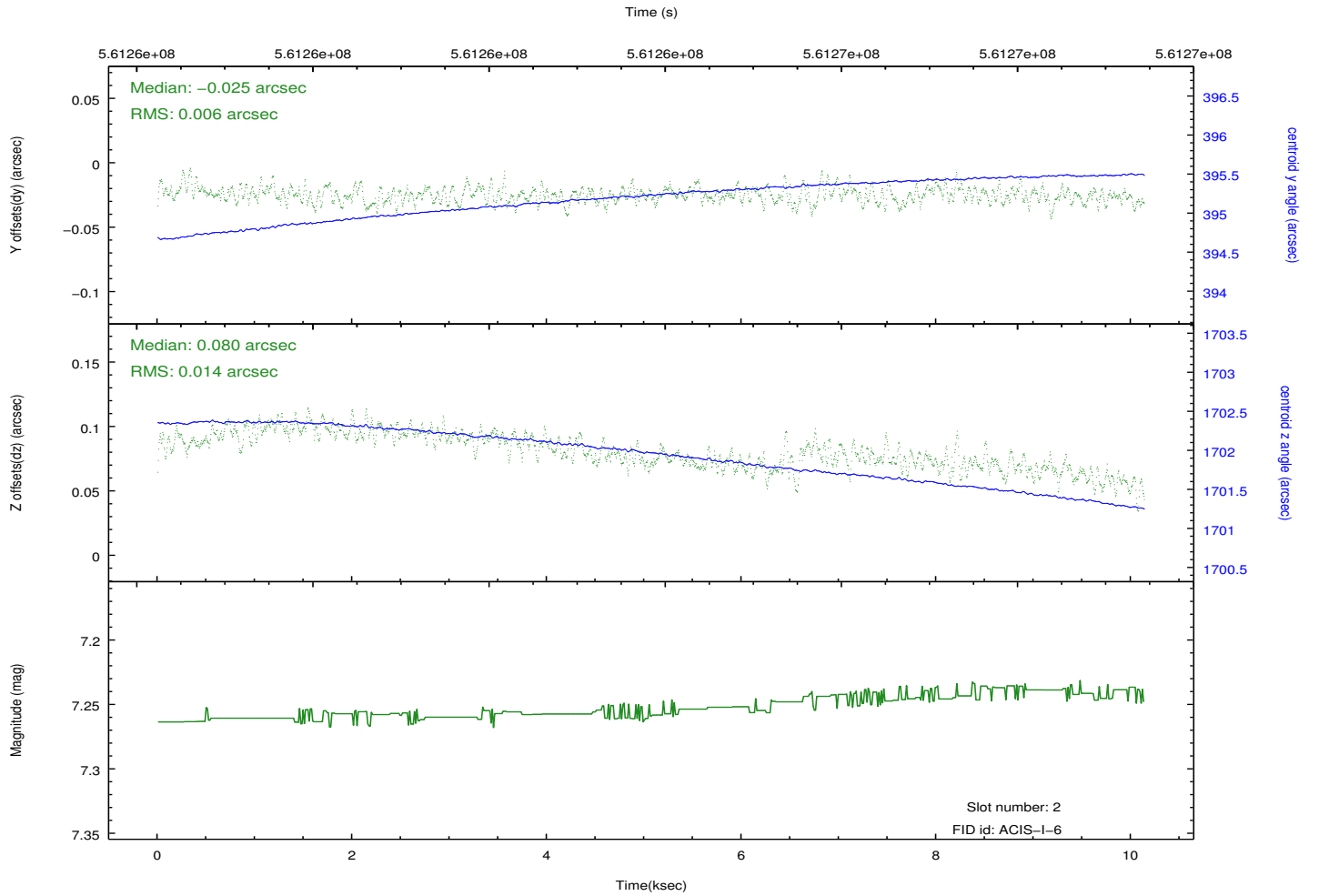
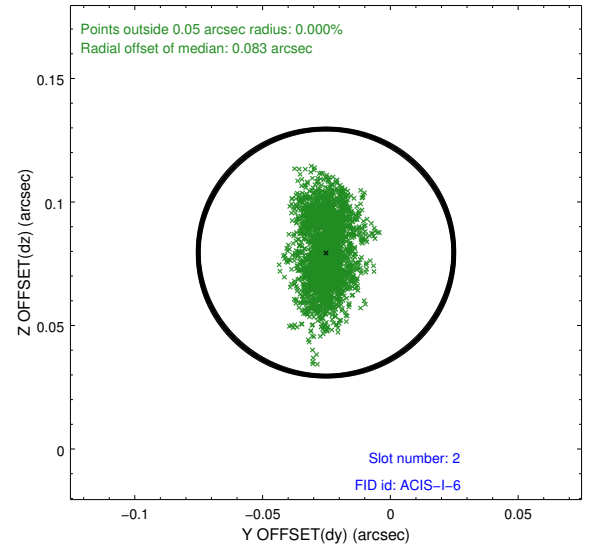
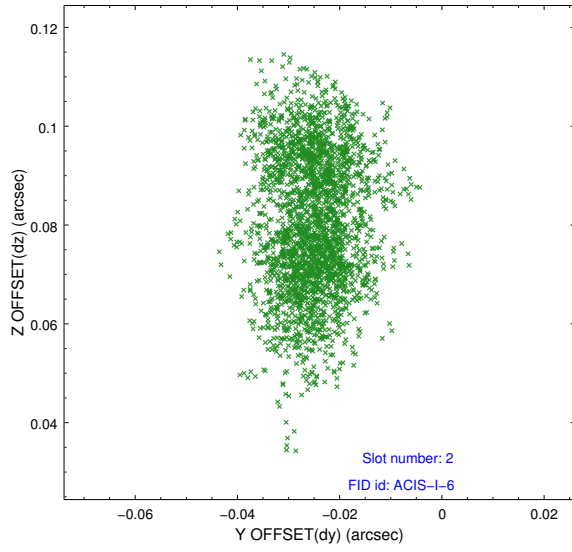
2.5.1 Slot 0



2.5.2 Slot 1



2.5.3 Slot 2



A Summary

A.1 Status

V&V Scientist	Jen Lauer
V&V Date (YYYY-MM-DD)	2015.10.15
V&V Edition	1
V&V Disposition and Status	OK
V&V Charge Time	10.06260007751

A.2 Comments