

V&V Reference Report

L2 ASCDS Version : 10.4.3.1

Observation 18830 - L2 Version 1
Chandra X-Ray Center

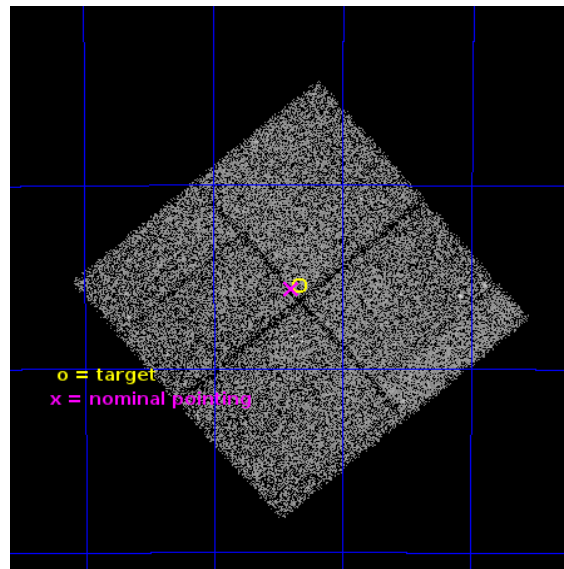
L2 Processing Date : Apr 29 2016

Contents

1	Front	2
2	OBI	3
2.1	OBI	3
2.1.1	Images	3
2.1.2	Bias	3
2.1.3	Parameters	4
2.1.4	Events	4
2.2	Compared Parameters	5
2.3	Aspect	6
2.4	Star Slots	9
2.4.1	Slot 3	9
2.4.2	Slot 4	10
2.4.3	Slot 5	11
2.4.4	Slot 6	12
2.4.5	Slot 7	13
2.5	FID Slots	14
2.5.1	Slot 0	14
2.5.2	Slot 1	15
2.5.3	Slot 2	16
A	Summary	17
A.1	Status	17
A.2	Comments	17

1 Front

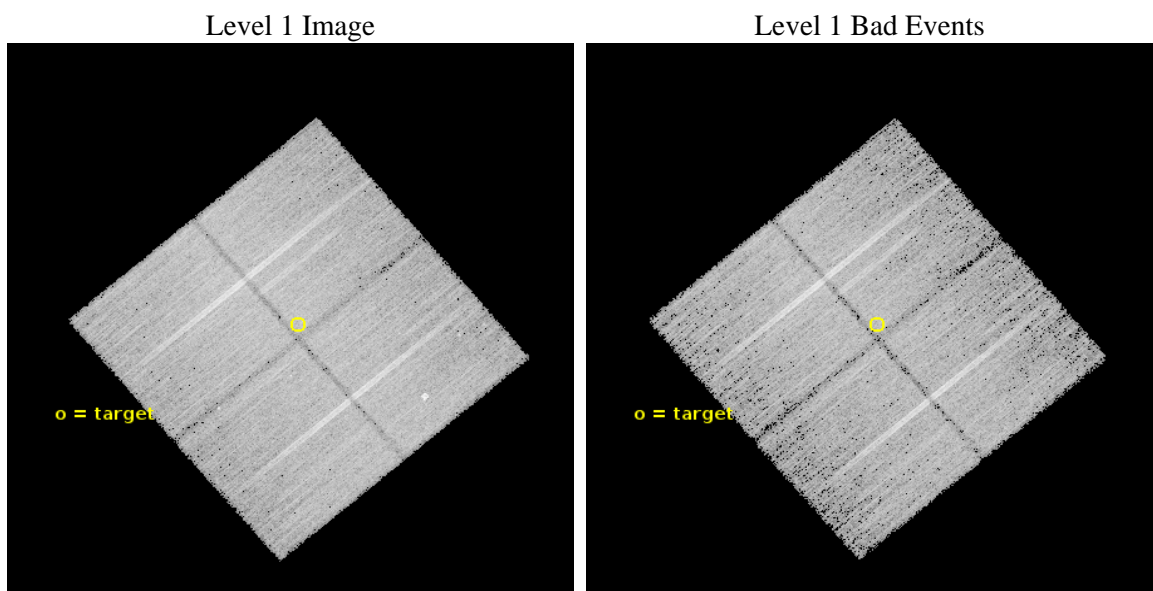
seq_num	200996	Sequence number
obs_id	18830	Observation id
title	X-Ray Investigation of the Most Luminous OB Association in the Galaxy	Proposal title
observer	Mubdi Rahman	Principal investigator
object	Dragonfish Association	Source name
dtcycle	0	
cycle	P	events from which exps? Prim/Second/Both
ra_targ	183.08375	Observer's specified target RA [deg]
dec_targ	-63.258583	Observer's specified target Dec [deg]
ra_nom	183.09901219547	Nominal RA [deg]
dec_nom	-63.260956123615	Nominal Dec [deg]
roll_nom	319.72231289284	Nominal Roll [deg]
revision	1	Processing version of data
ontime	28346.136555433	Sum of GTIs [s]
livetime	27975.773413214	Livetime [s]
ontime0	28349.154465675	Sum of GTIs [s]
ontime1	28346.054475427	Sum of GTIs [s]
ontime2	28349.236545682	Sum of GTIs [s]
ontime3	28346.136555433	Sum of GTIs [s]
l2events	67721	Number of level 2 events



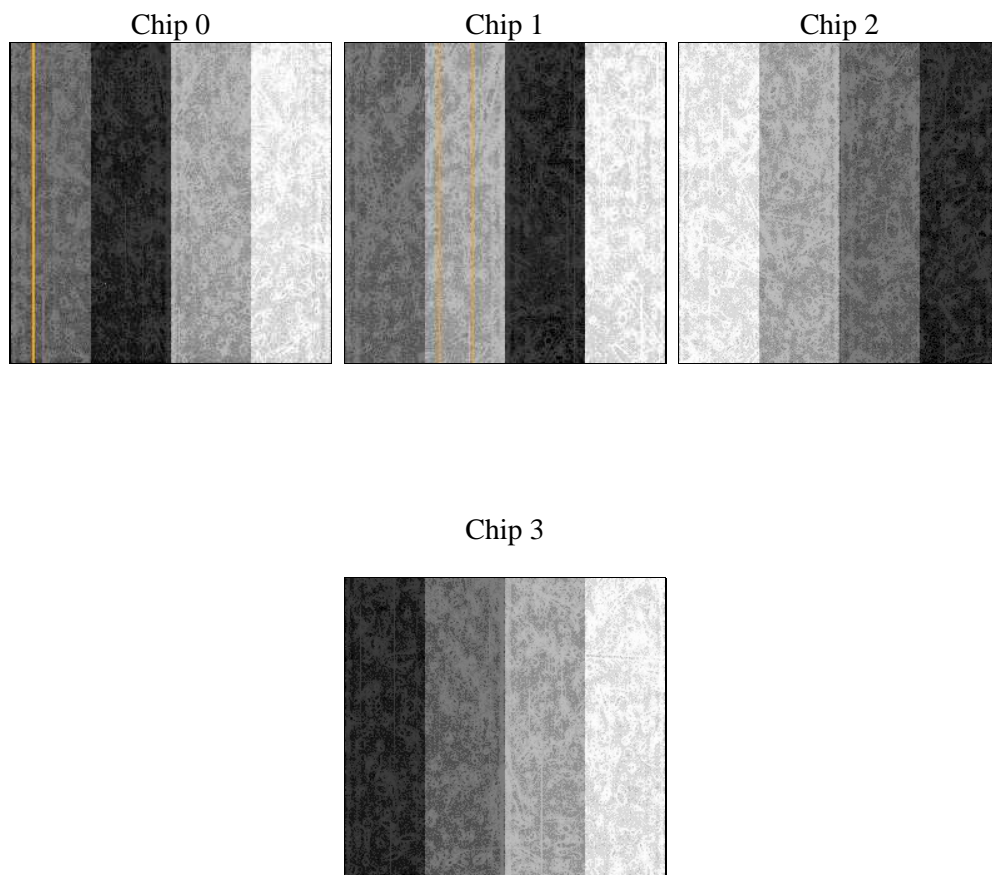
2 OBI

2.1 OBI

2.1.1 Images



2.1.2 Bias



2.1.3 Parameters

obi_num	0	Obi number	sched_exp_time	28278.480000	[s] Scheduled observation exposure time
ascdsver	10.4.3.1	Processing system revision	ontime	28346.136555433	Sum of GTIs [s]
caldsver	4.7.1	 	ontime0	28349.154465675	Sum of GTIs [s]
date	2016-04-29T06:42:49	Date and time of file creation	ontime1	28346.054475427	Sum of GTIs [s]
revision	1	Processing version of data	ontime2	28349.236545682	Sum of GTIs [s]
			ontime3	28346.136555433	Sum of GTIs [s]
			l1events	678922	Number of level 1 events

2.1.4 Events

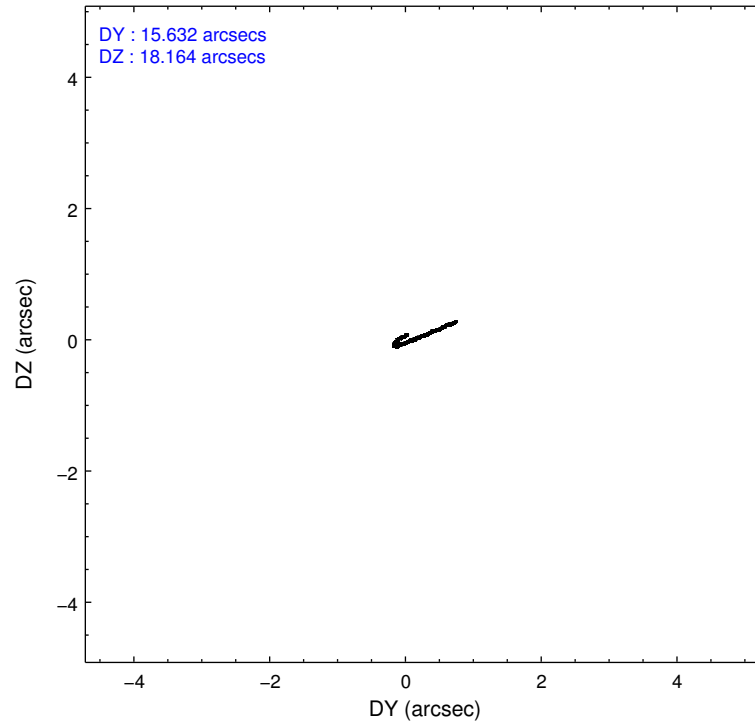
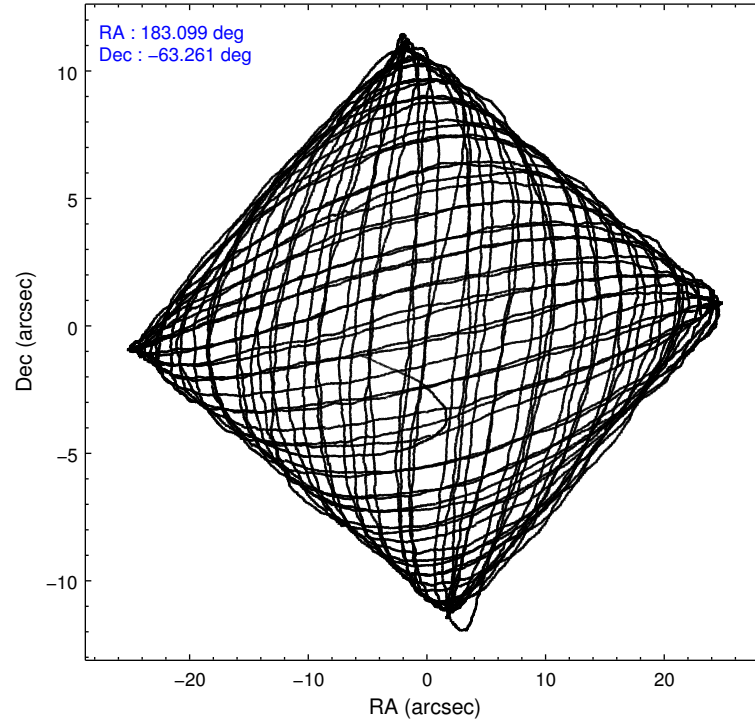
	ccd 0	ccd 1	ccd 2	ccd 3
level 1 events	161229	167596	178269	171828
rejected events	141001	144314	159290	152736
rejected %	87%	86%	89%	88%

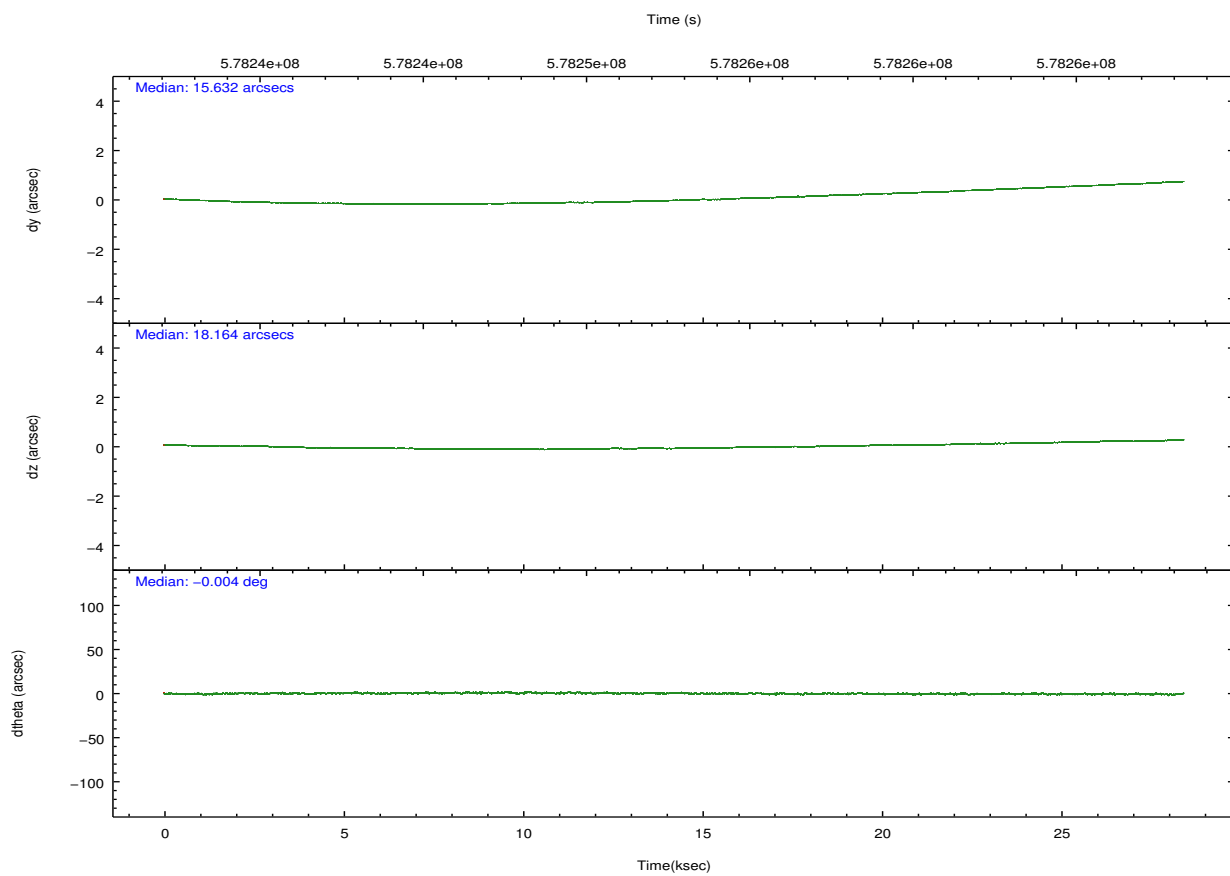
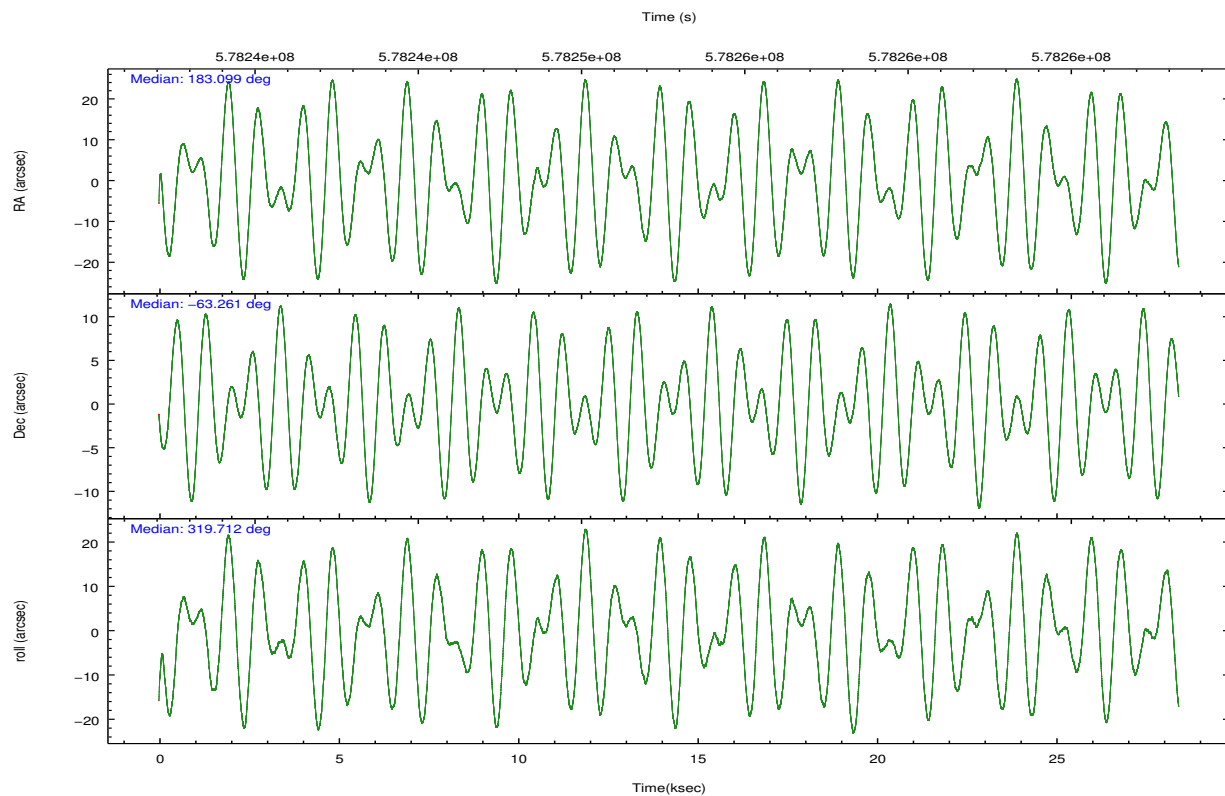
	ccd 0	ccd 1	ccd 2	ccd 3
grade 0 events	7063	8436	6937	6879
	4%	5%	3%	4%
grade 1 events	80	81	94	114
	0%	0%	0%	0%
grade 2 events	4908	5688	4450	4184
	3%	3%	2%	2%
grade 3 events	2086	2128	1860	2009
	1%	1%	1%	1%
grade 4 events	2006	2099	1974	2030
	1%	1%	1%	1%
grade 5 events	7324	7879	6907	8475
	4%	4%	3%	4%
grade 6 events	4176	4941	3761	3992
	2%	2%	2%	2%
grade 7 events	133586	136344	152286	144145
	82%	81%	85%	83%

2.2 Compared Parameters

Parameter	Planned	Actual	Parameter	Planned	Actual
Instrument	ACIS	ACIS	Obspar format version number	7	7
Detector	ACIS-0123	ACIS-0123	Obspar file type	PREDICTED	ACTUAL
Grating	NONE	NONE	Obspar update status	NONE	UPDATED
Data mode	VFAINT	VFAINT	Number of optional ACIS chips dropped	0	0
Observation mode	POINTING	POINTING	On-chip summing requested	N	N
[deg] Pointing RA	183.038650	183.0990121954736	Subarray requested	NONE	NONE
[deg] Pointing Dec	-63.256122	-63.2609561236149	Alternating exposures requested	N	N
[deg] Pointing Roll	319.459725	319.7223128928377	[s] Primary exposure time	0.000000	3.1
[mm] SIM focus pos	-0.782348	-0.7809083437167272			
[mm] SIM defocus	0	0.001439871863259334			
[mm] SIM translation stage pos	-233.592463	-233.5874344608287			
[mm] SIM translation stage offset	0	-0.005018542100998502			
[s] Observation start time (MET)	578238577.184000	578237230.19645			
Observation start date	2016-04-28T13:48:29	2016-04-28T13:27:10			
[s] Observation end time (MET)	578266856.184000	578267088.96066			
Observation end date	2016-04-28T21:39:48	2016-04-28T21:44:48			
Read mode	TIMED	TIMED			

2.3 Aspect



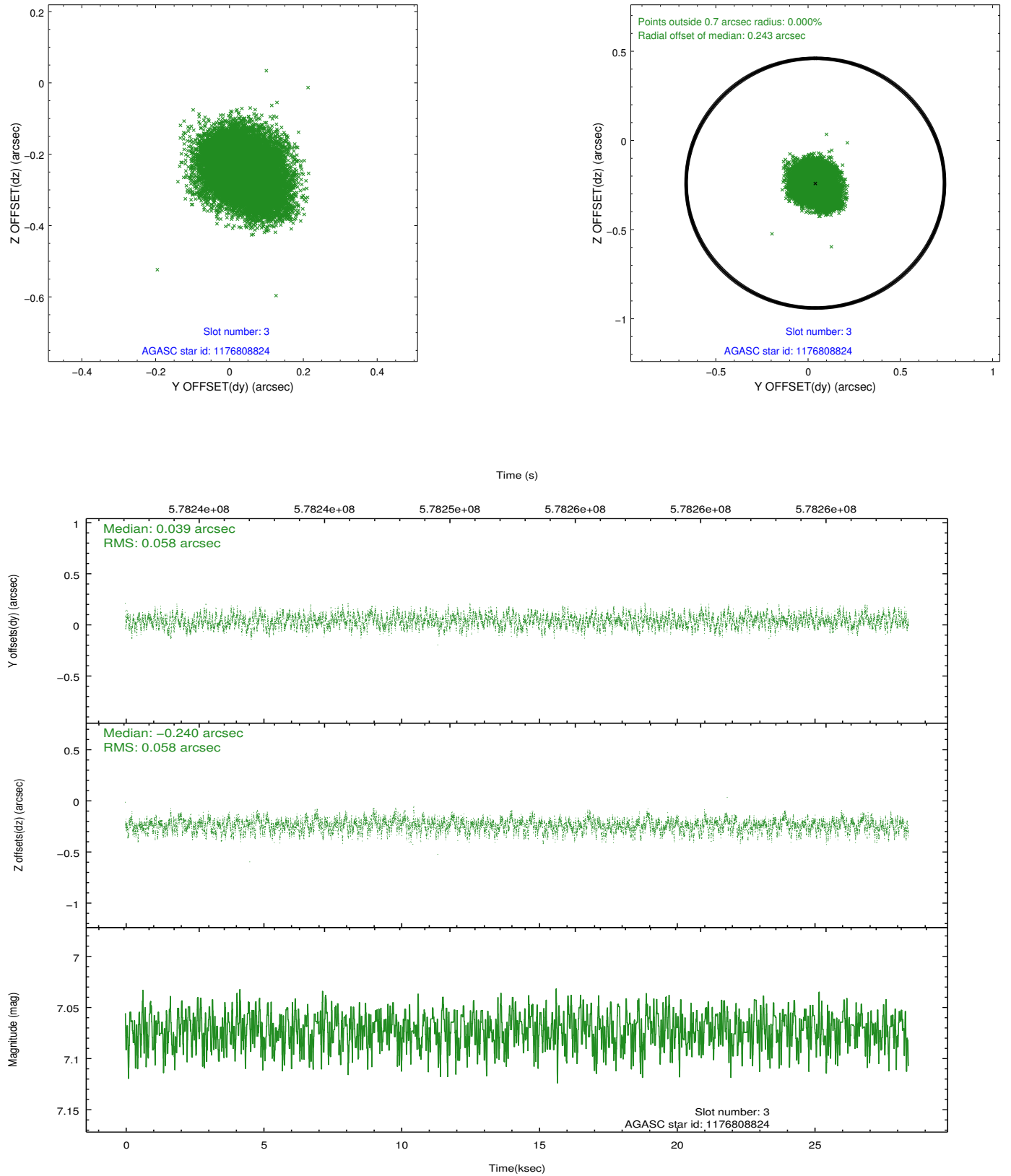


Slot Statistics

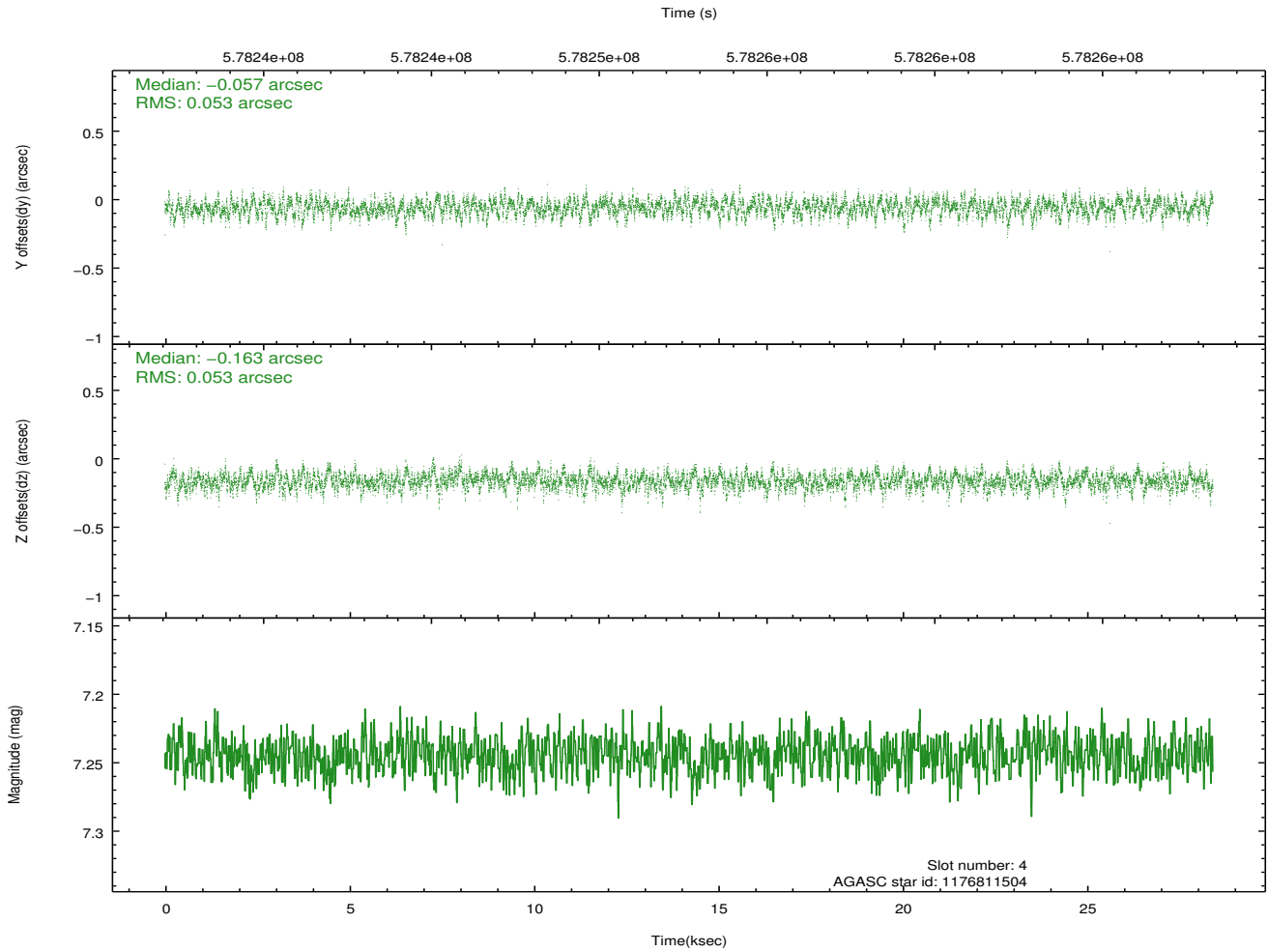
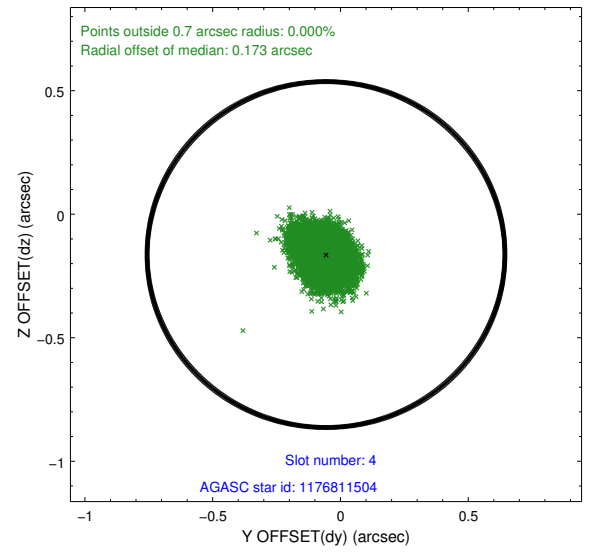
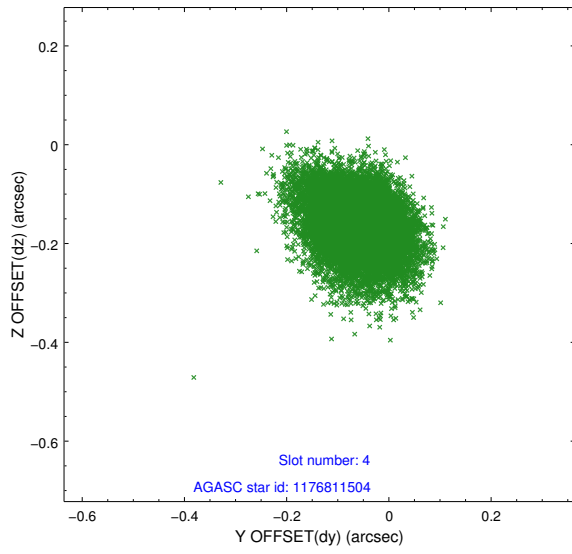
slot	status	used	id	mag	n_pts	med_dy	med_dz	dr1	dr2	ra	dec	mean_y	mean_z
0	FID		ACIS-I-1	7.25	6933	0.065	-0.005	0.008	0.016	0.000000	0.000000	923.80	-841.84
1	FID		ACIS-I-5	7.26	6932	-0.356	0.032	0.007	0.012	0.000000	0.000000	-1824.77	1055.53
2	FID		ACIS-I-6	7.27	6933	0.199	0.044	0.008	0.013	0.000000	0.000000	389.27	1700.24
3	GUIDE	used	1176808824	7.07	13863	0.039	-0.240	0.089	0.139	184.159290	-63.197902	1254.86	1328.32
4	GUIDE	used	1176811504	7.24	13864	-0.057	-0.163	0.078	0.132	183.821836	-62.887748	119.78	1837.17
5	GUIDE	used	1177318928	7.60	13864	-0.118	0.200	0.088	0.145	183.098145	-63.852646	1468.28	-1569.89
6	GUIDE	used	1176803184	9.13	13845	0.183	-0.245	0.112	0.183	183.384889	-62.526794	-1268.27	2367.54
7	GUIDE	used	1177316904	8.51	13854	-0.048	0.449	0.112	0.190	182.458956	-63.915853	849.92	-2403.53

2.4 Star Slots

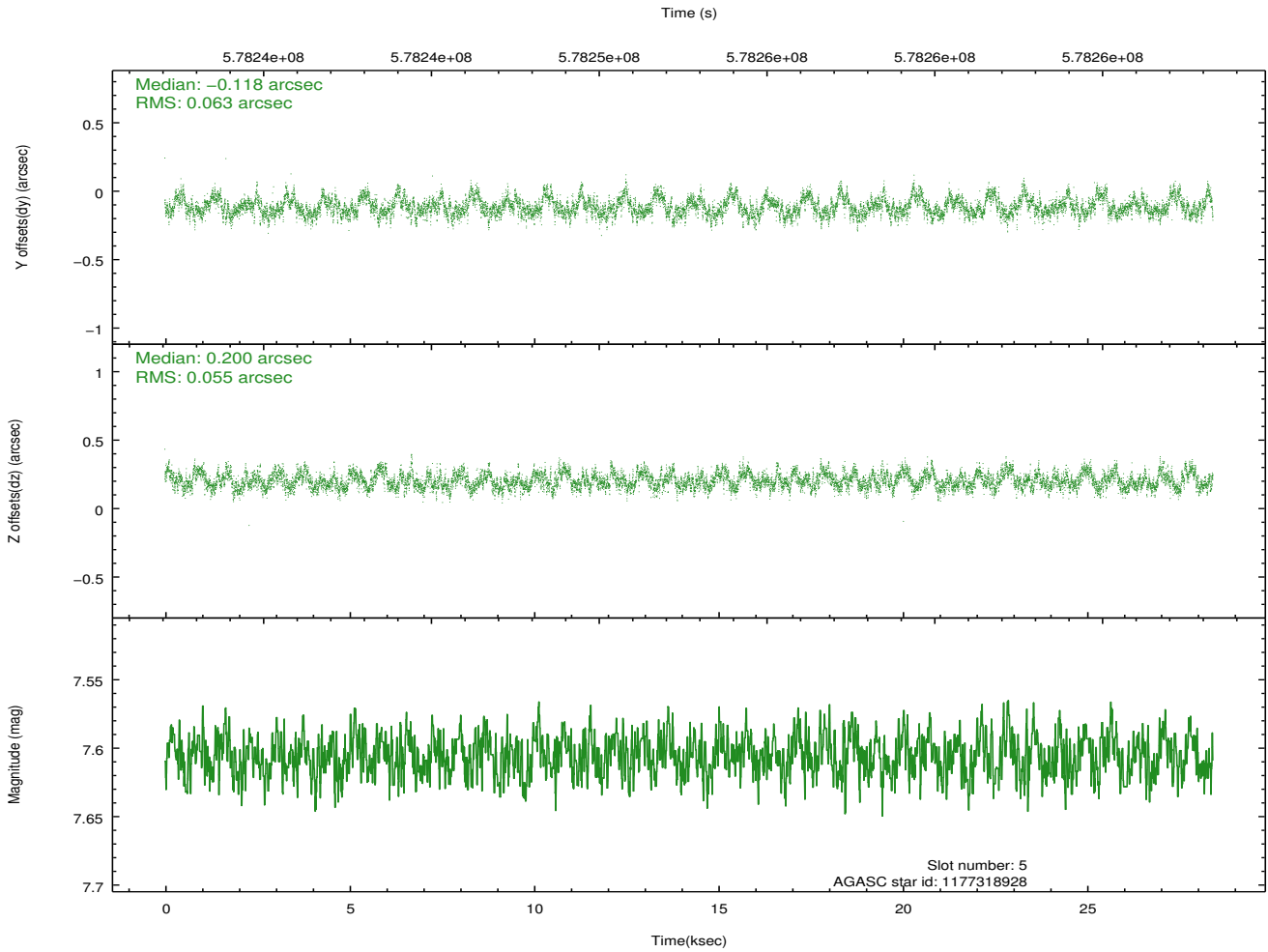
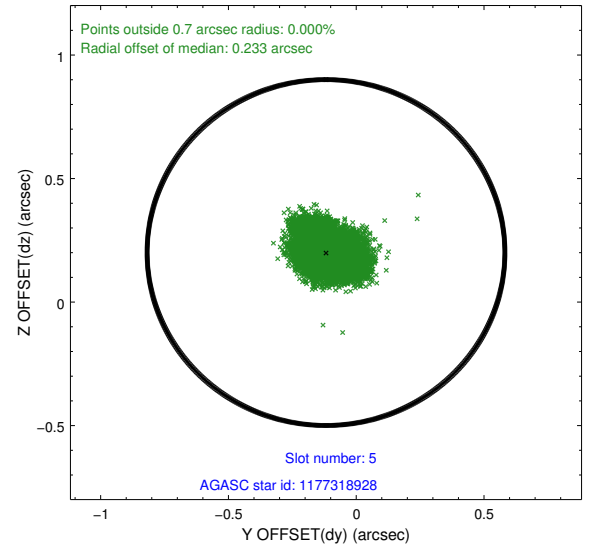
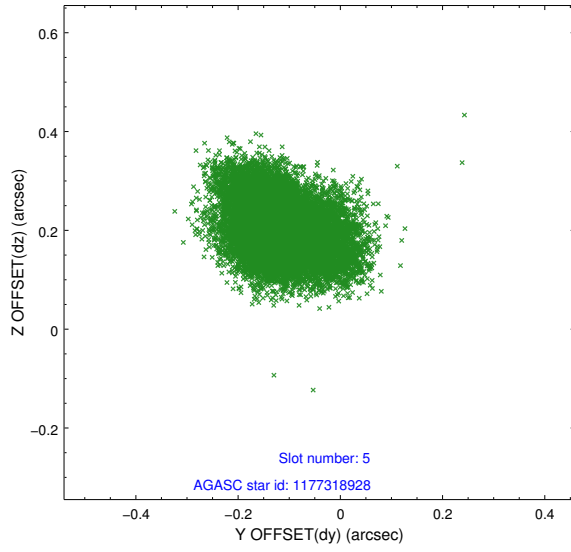
2.4.1 Slot 3



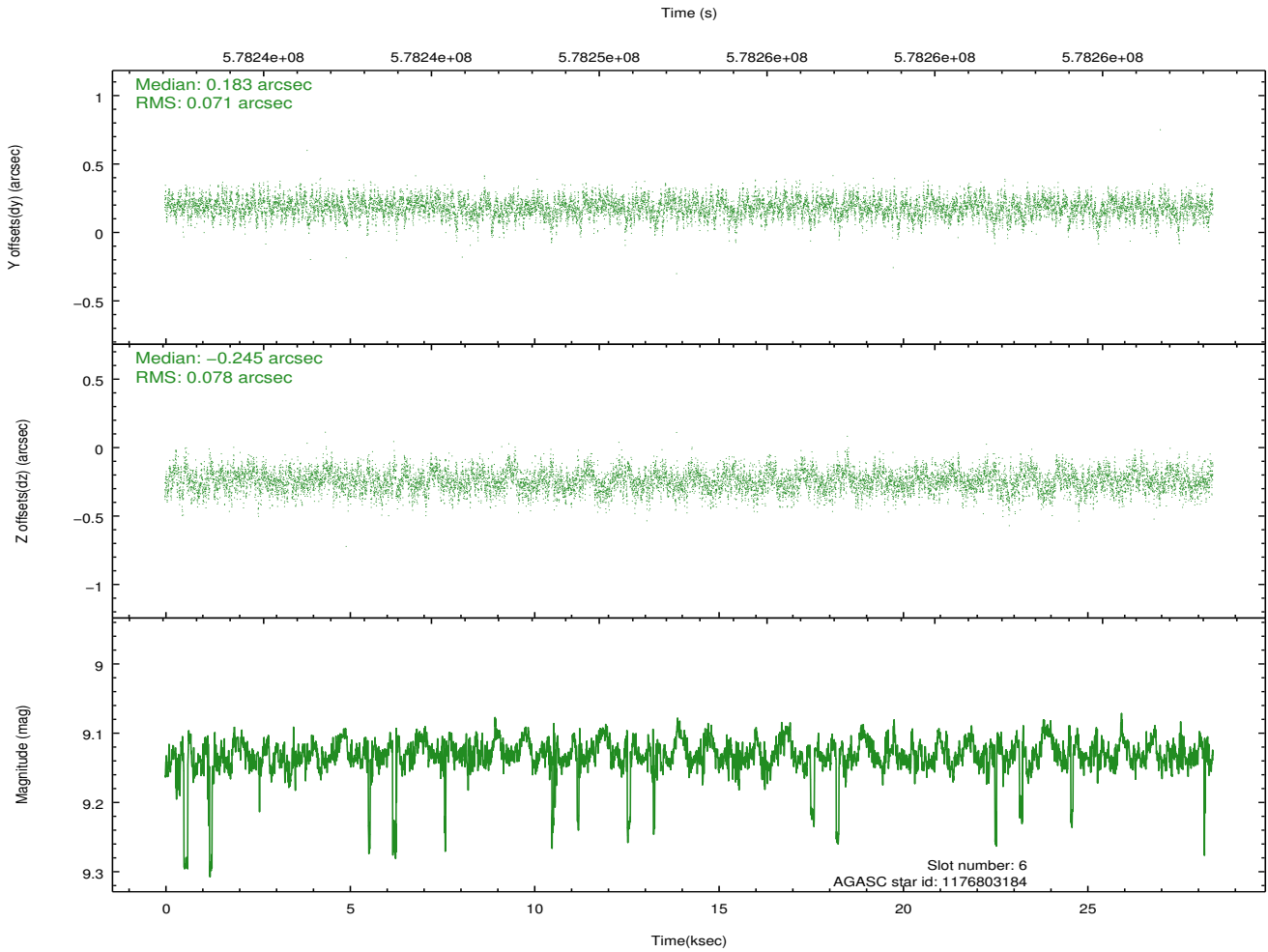
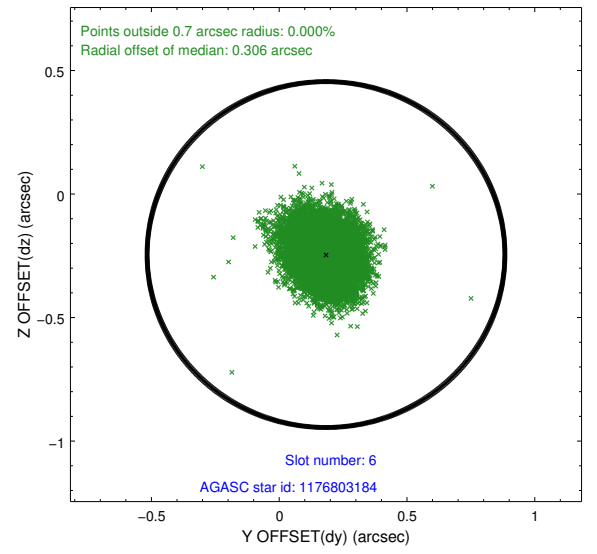
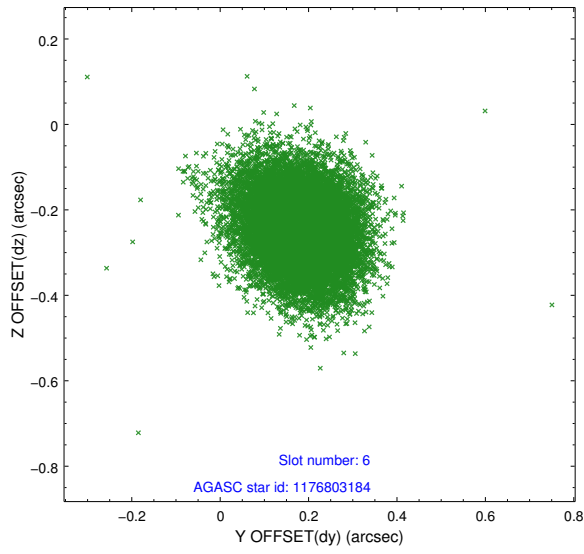
2.4.2 Slot 4



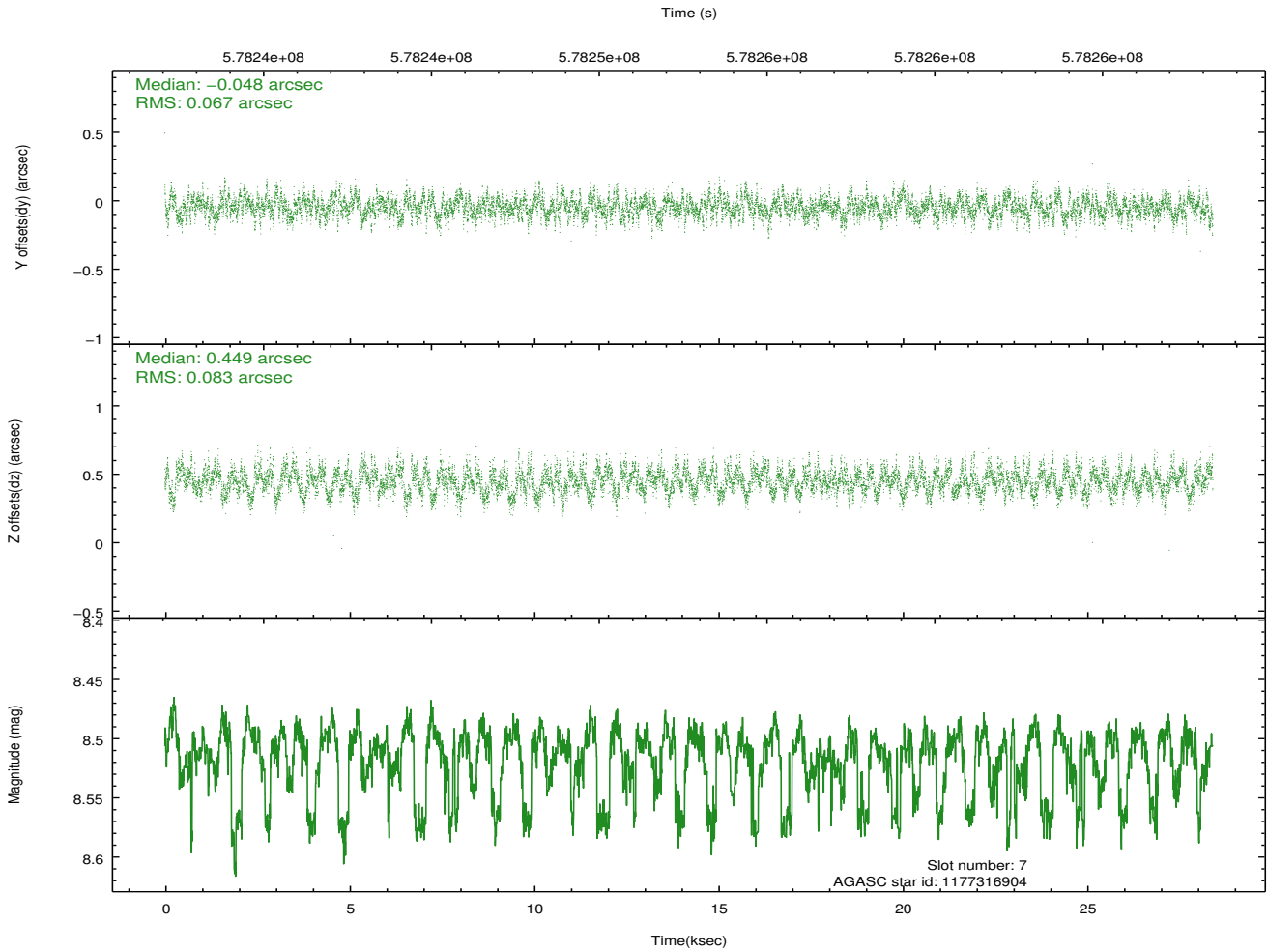
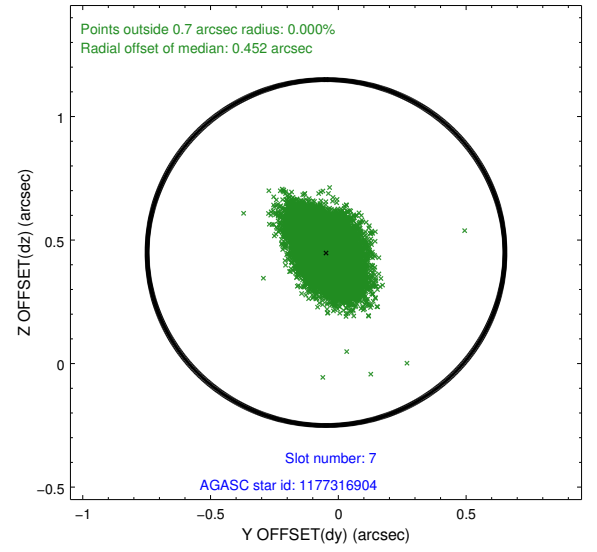
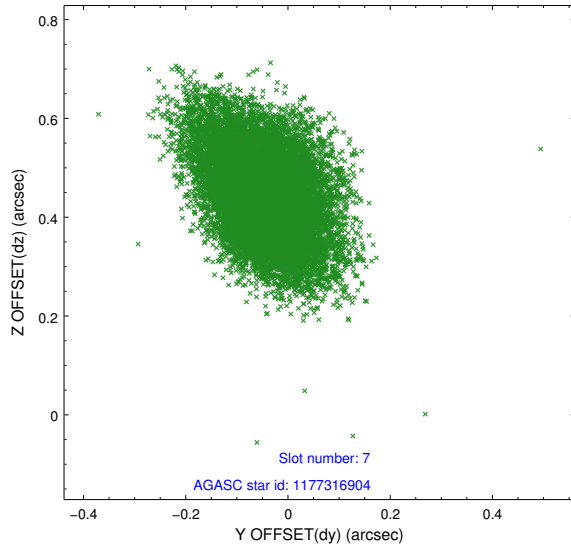
2.4.3 Slot 5



2.4.4 Slot 6

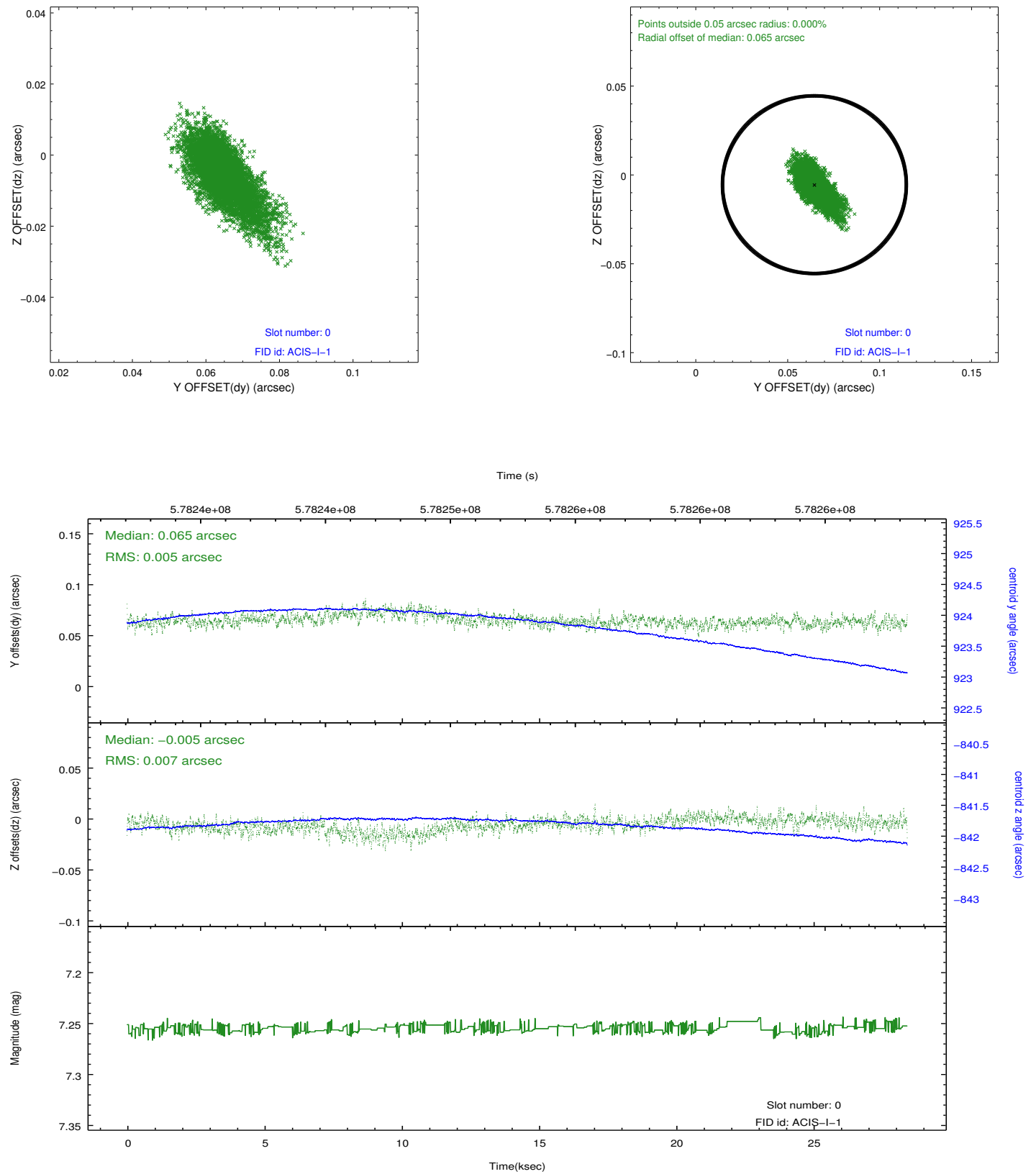


2.4.5 Slot 7

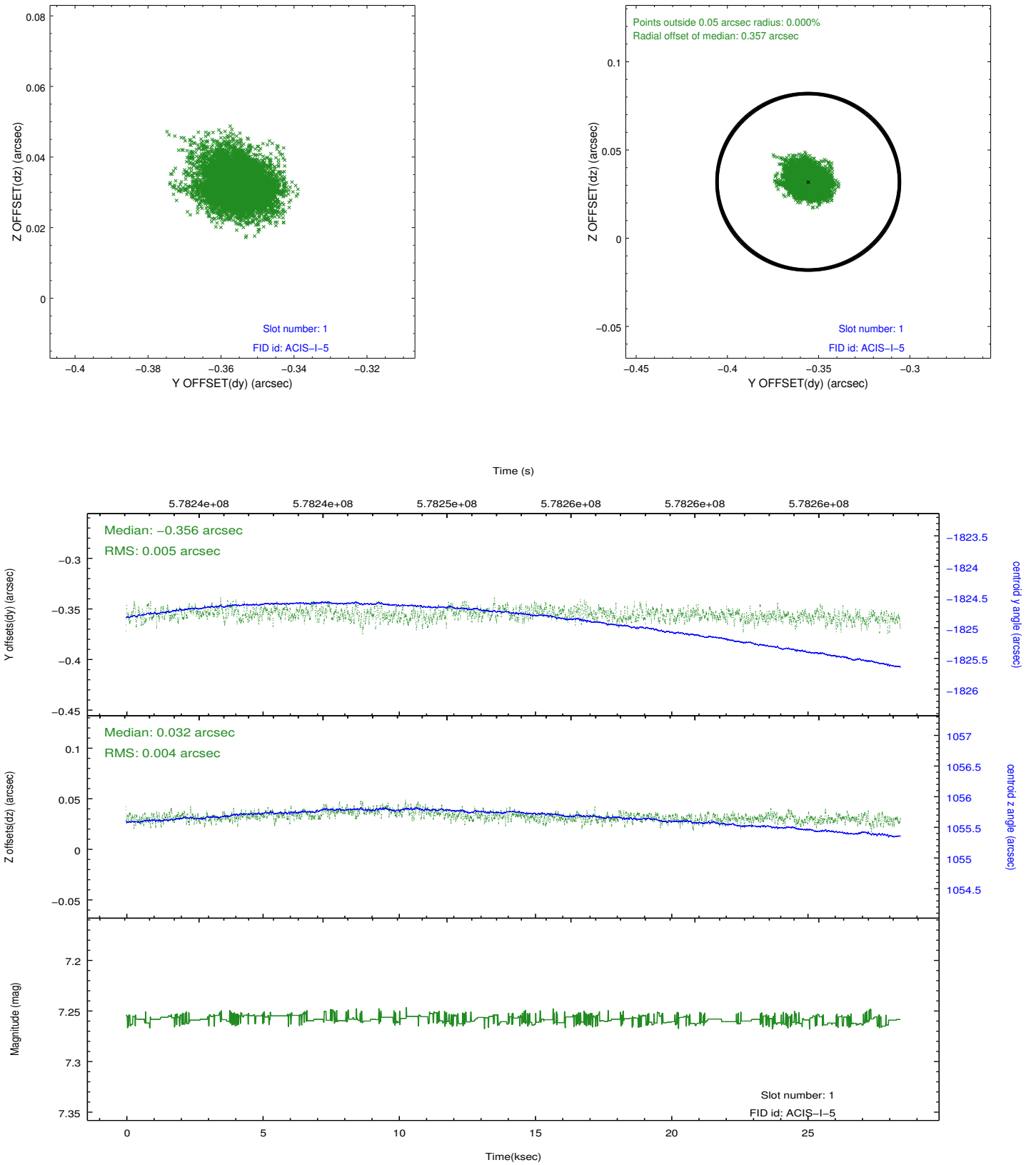


2.5 FID Slots

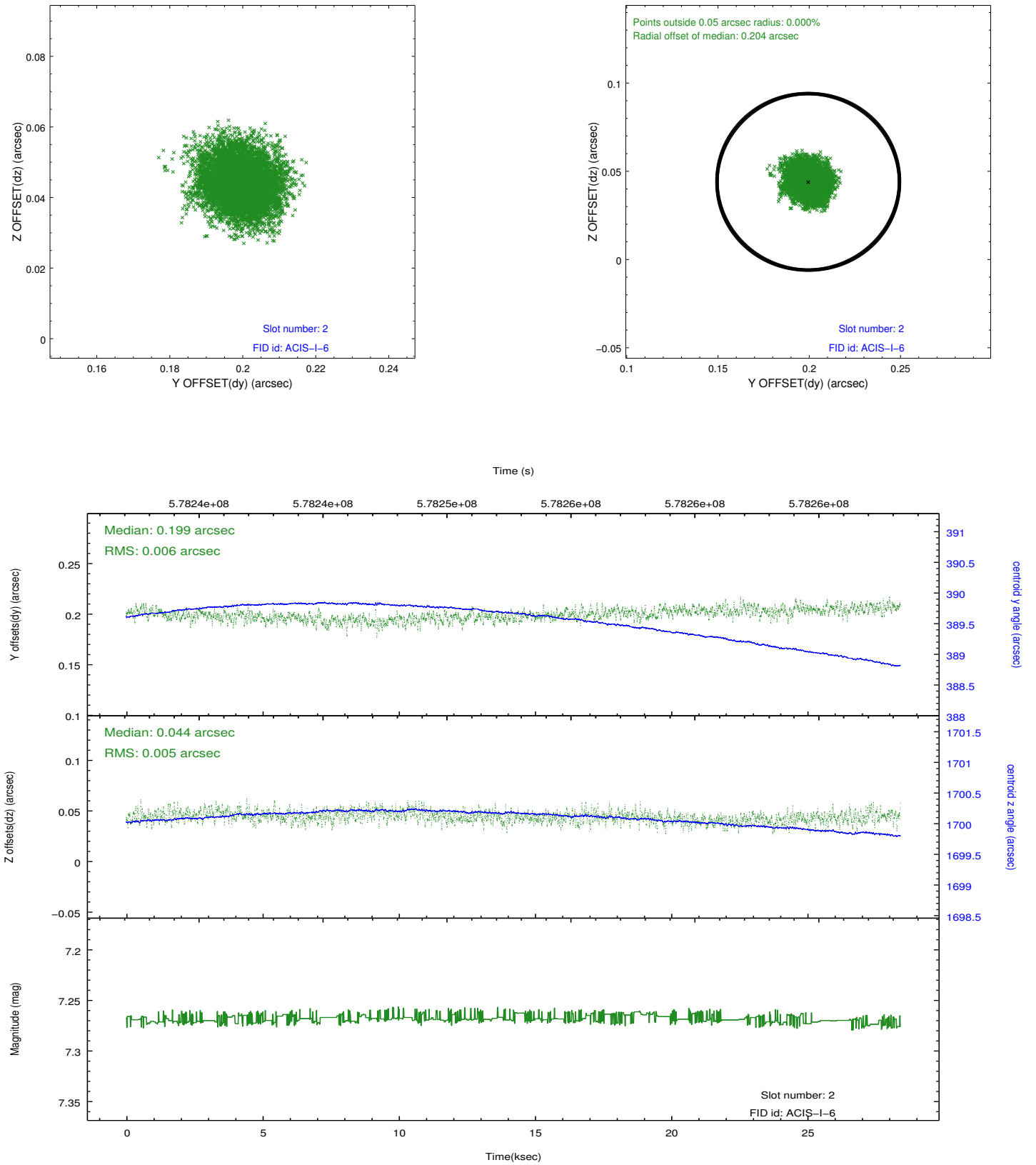
2.5.1 Slot 0



2.5.2 Slot 1



2.5.3 Slot 2



A Summary

A.1 Status

V&V Scientist	Joy Nichols
V&V Date (YYYY-MM-DD)	2016.04.29
V&V Edition	1
V&V Disposition and Status	OK
V&V Charge Time	28.346136555433

A.2 Comments