

V&V Reference Report

L2 ASCDS Version : 10.3.1

Observation 17442 - L2 Version 1
Chandra X-Ray Center

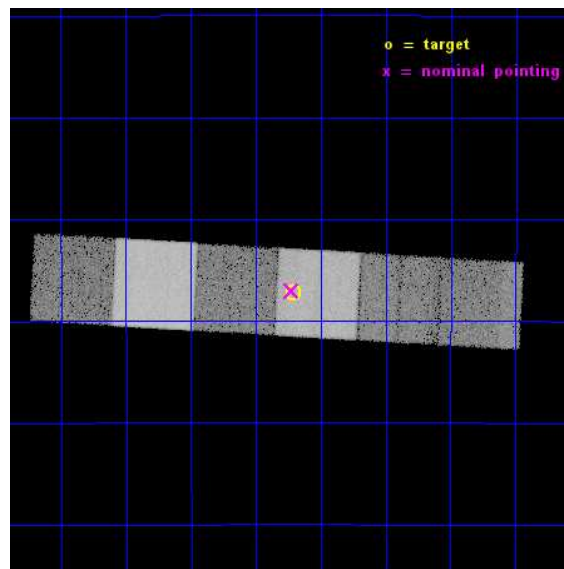
L2 Processing Date : Jan 14 2015

Contents

1	Front	2
2	OBI	3
2.1	OBI	3
2.1.1	Images	3
2.1.2	Bias	3
2.1.3	Parameters	4
2.1.4	Events	4
2.2	Compared Parameters	5
2.3	Aspect	6
2.4	Star Slots	9
2.4.1	Slot 3	9
2.4.2	Slot 4	10
2.4.3	Slot 5	11
2.4.4	Slot 6	12
2.4.5	Slot 7	13
2.5	FID Slots	14
2.5.1	Slot 0	14
2.5.2	Slot 1	15
2.5.3	Slot 2	16
3	Gratings	17
3.1	HEG Arm	17
3.2	MEG Arm	19
A	Summary	21
A.1	Status	21
A.2	Comments	21

1 Front

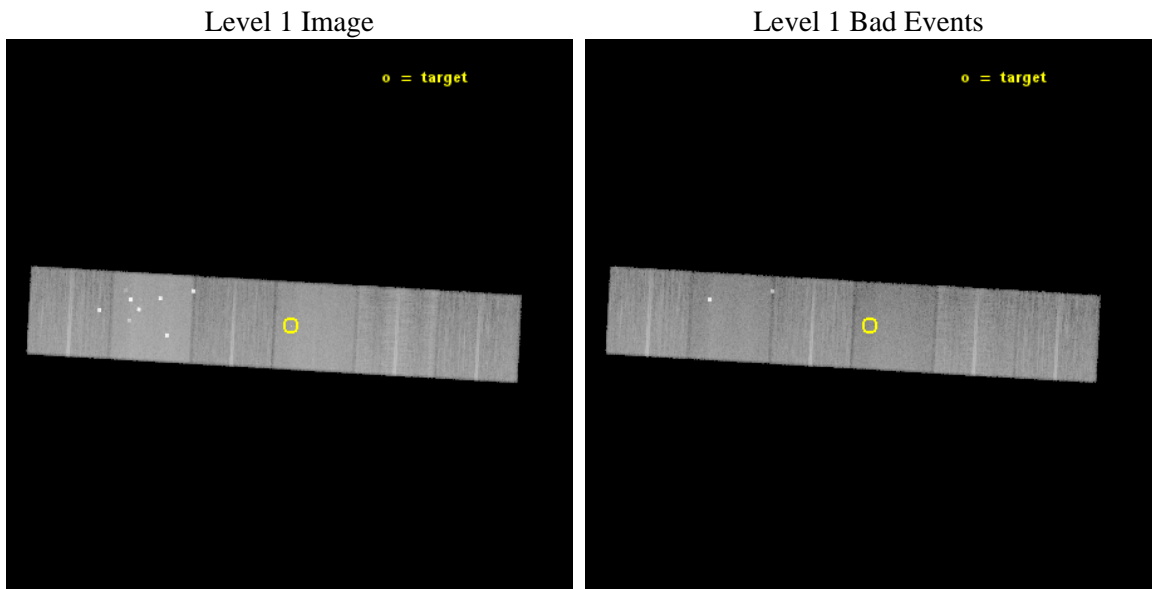
seq_num	201024	Sequence number
obs_id	17442	Observation id
title	Characterizing Hot Star Winds	Proposal title
observer	Prof. Claude Canizares	Principal investigator
object	tau CMa	Source name
dtcycle	0	
cycle	P	events from which exps? Prim/Second/Both
ra_targ	109.677083	Observer's specified target RA [deg]
dec_targ	-24.954361	Observer's specified target Dec [deg]
ra_nom	109.68153256976	Nominal RA [deg]
dec_nom	-24.950699097242	Nominal Dec [deg]
roll_nom	3.1385065149966	Nominal Roll [deg]
revision	1	Processing version of data
ontime	29961.600446463	Sum of GTIs [s]
livetime	29582.2086209	Livetime [s]
ontime4	29961.600446463	Sum of GTIs [s]
ontime5	29961.600446463	Sum of GTIs [s]
ontime6	29961.600446463	Sum of GTIs [s]
ontime7	29961.600446463	Sum of GTIs [s]
ontime8	29961.600446463	Sum of GTIs [s]
ontime9	29961.600446463	Sum of GTIs [s]
l2events	270908	Number of level 2 events



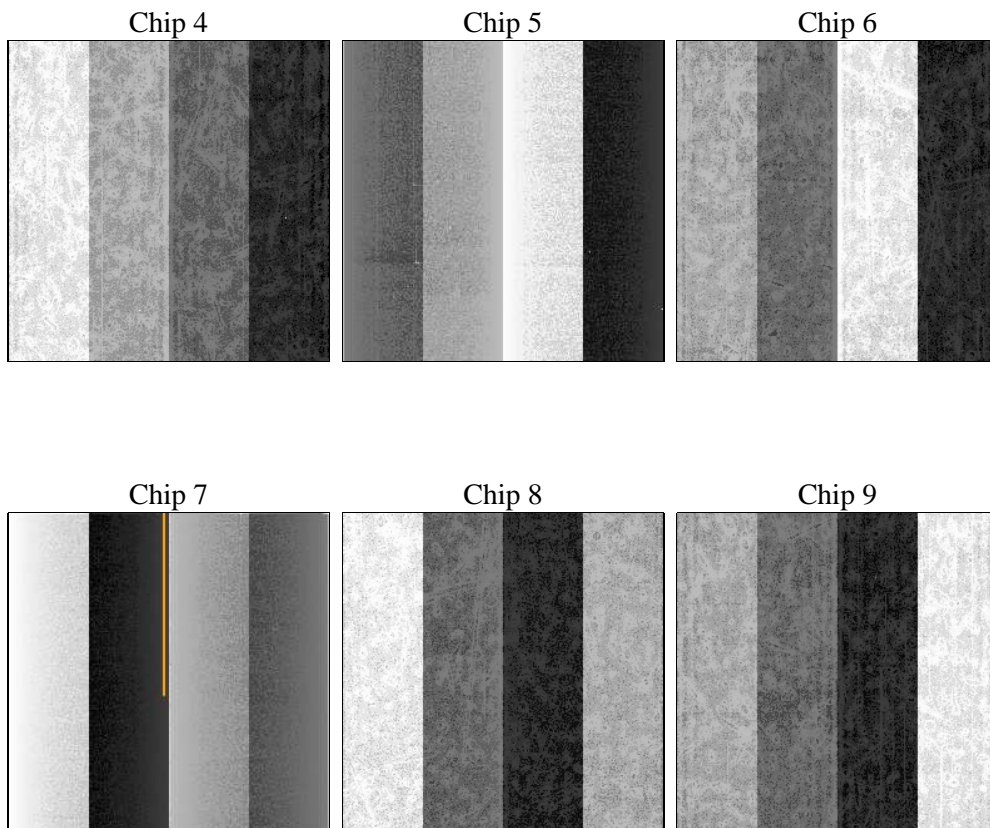
2 OBI

2.1 OBI

2.1.1 Images



2.1.2 Bias



2.1.3 Parameters

obi_num	0	Obi number	sched_exp_time	30000.000000	[s] Scheduled observation exposure time
ascdsver	10.3.1	Processing system revision	ontime	29961.600446463	Sum of GTIs [s]
caldsver	4.6.5	 	ontime4	29961.600446463	Sum of GTIs [s]
date	2015-01-14T11:50:12	Date and time of file creation	ontime5	29961.600446463	Sum of GTIs [s]
revision	1	Processing version of data	ontime6	29961.600446463	Sum of GTIs [s]
			ontime7	29961.600446463	Sum of GTIs [s]
			ontime8	29961.600446463	Sum of GTIs [s]
			ontime9	29961.600446463	Sum of GTIs [s]
			l1events	1222090	Number of level 1 events
			tgmetho	TGDETECT	Method used to create src1a file
			ra_pos	(4126.02, 4070.10)	src1a sky pixel position

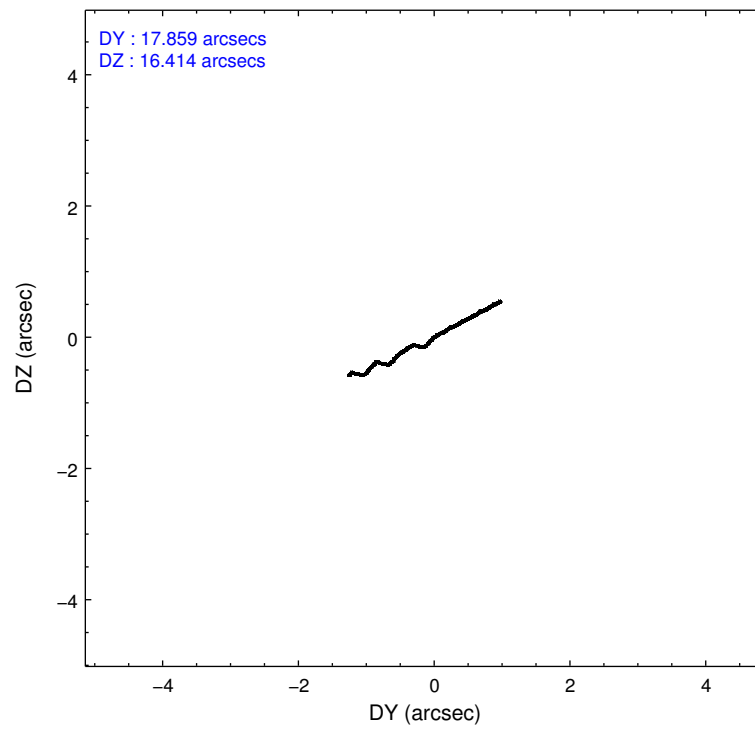
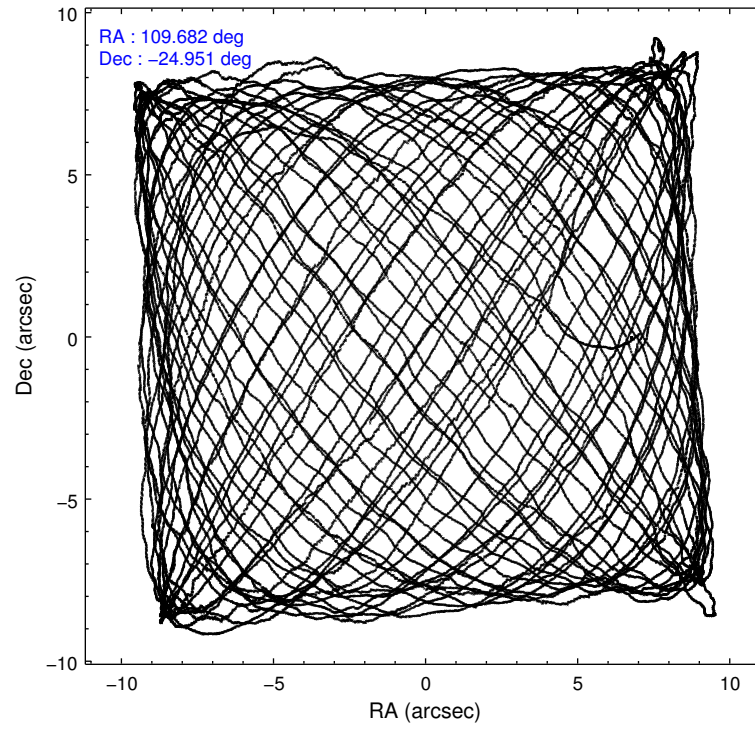
2.1.4 Events

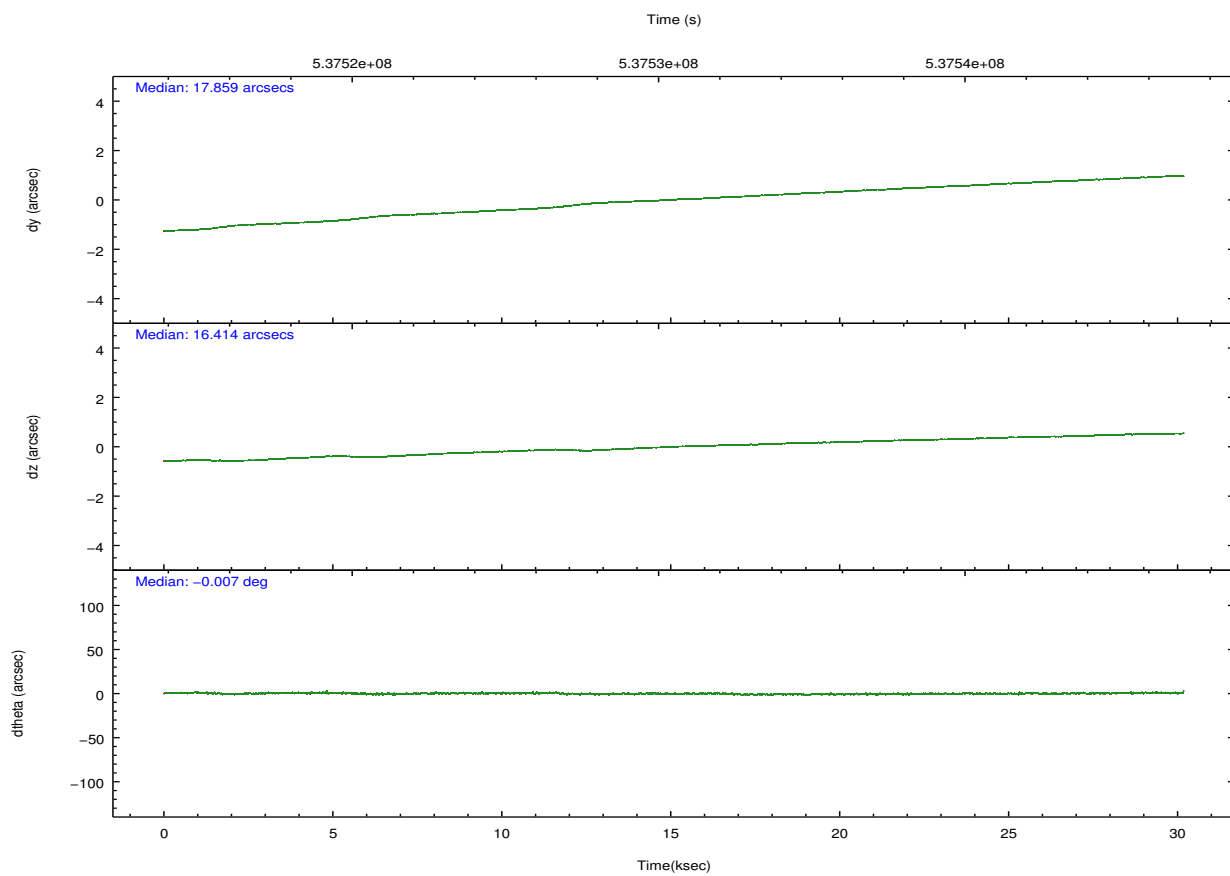
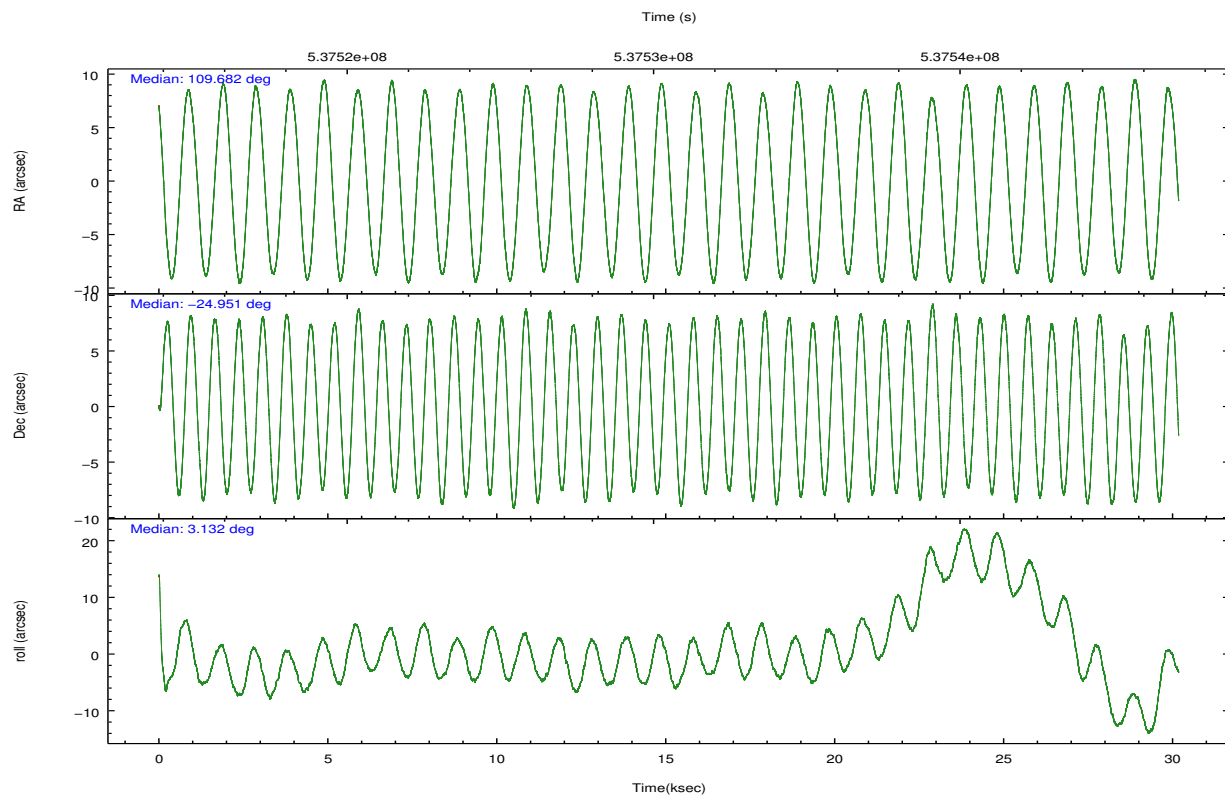
	ccd 4	ccd 5	ccd 6	ccd 7	ccd 8	ccd 9		ccd 4	ccd 5	ccd 6	ccd 7	ccd 8	ccd 9
level 1 events	186771	295660	162398	210845	206533	159883	grade 0 events	13995	31465	6280	7888	15080	6953
rejected events	160588	143844	143722	119676	152685	140117		7%	10%	3%	3%	7%	4%
rejected %	85%	48%	88%	56%	73%	87%	grade 1 events	181	857	76	263	129	109
								0%	0%	0%	0%	0%	0%
							grade 2 events	4579	41558	4280	18964	13077	4338
								2%	14%	2%	8%	6%	2%
							grade 3 events	2105	5139	1891	7406	5628	2078
								1%	1%	1%	3%	2%	1%
							grade 4 events	2019	4386	1813	7309	5292	1991
								1%	1%	1%	3%	2%	1%
							grade 5 events	8088	19627	7922	21527	11675	9122
								4%	6%	4%	10%	5%	5%
							grade 6 events	3485	69277	4415	49607	14773	4408
								1%	23%	2%	23%	7%	2%
							grade 7 events	152319	123351	135721	97881	140879	130884
								81%	41%	83%	46%	68%	81%

2.2 Compared Parameters

Parameter	Planned	Actual	Parameter	Planned	Actual
Instrument	ACIS	ACIS	Obspar format version number	7	7
Detector	ACIS-456789	ACIS-456789	Obspar file type	PREDICTED	ACTUAL
Grating	HETG	HETG	Obspar update status	NONE	UPDATED
Data mode	FAINT	FAINT	CCD I0 on	N	N
Observation mode	POINTING	POINTING	CCD I1 on	N	N
[deg] Pointing RA	109.656400	109.6815325697617	CCD I2 on	N	N
[deg] Pointing Dec	-24.966022	-24.95069909724218	CCD I3 on	N	N
[deg] Pointing Roll	2.971266	3.138506514996611	CCD S0 on	O1	Y
[mm] SIM focus pos	-0.684267	-0.6828225247311905	CCD S1 on	Y	Y
[mm] SIM defocus	0	0.001444936568705701	CCD S2 on	Y	Y
[mm] SIM translation stage pos	-190.132523	-190.1400660498719	CCD S3 on	Y	Y
[mm] SIM translation stage offset	0	0.00754346686406393	CCD S4 on	Y	Y
[s] Observation start time (MET)	537515573.184000	537514492.74845	CCD S5 on	O2	Y
Observation start date	2015-01-13T05:51:46	2015-01-13T05:34:52	Number of optional ACIS chips dropped	0	0
[s] Observation end time (MET)	537545573.184000	537546545.01273	On-chip summing requested	N	N
Observation end date	2015-01-13T14:11:46	2015-01-13T14:29:05	Subarray requested	NONE	NONE
Read mode	TIMED	TIMED	Alternating exposures requested	N	N
			[s] Primary exposure time	0.000000	3.2

2.3 Aspect



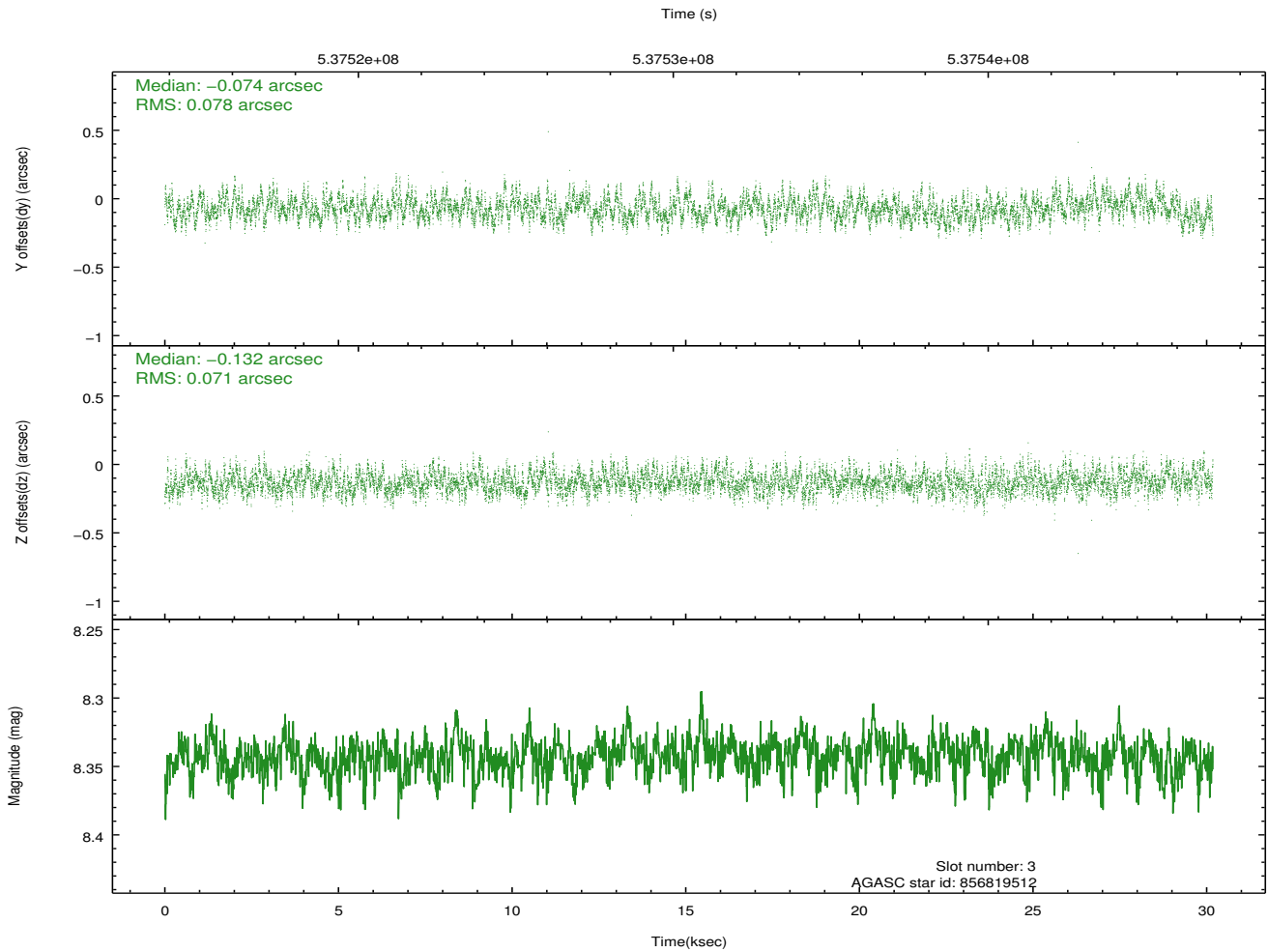
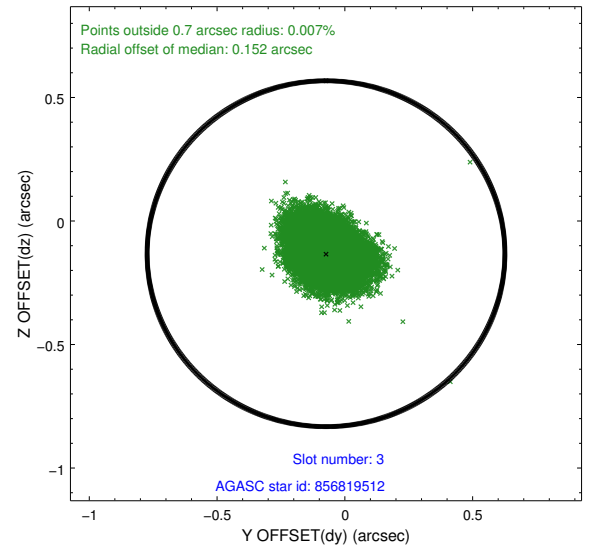
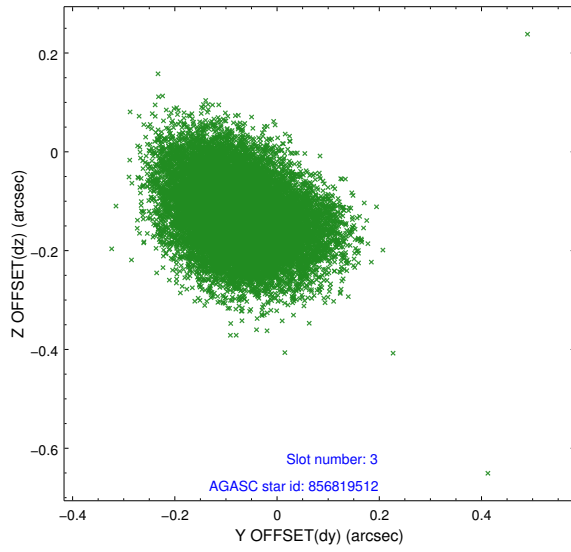


Slot Statistics

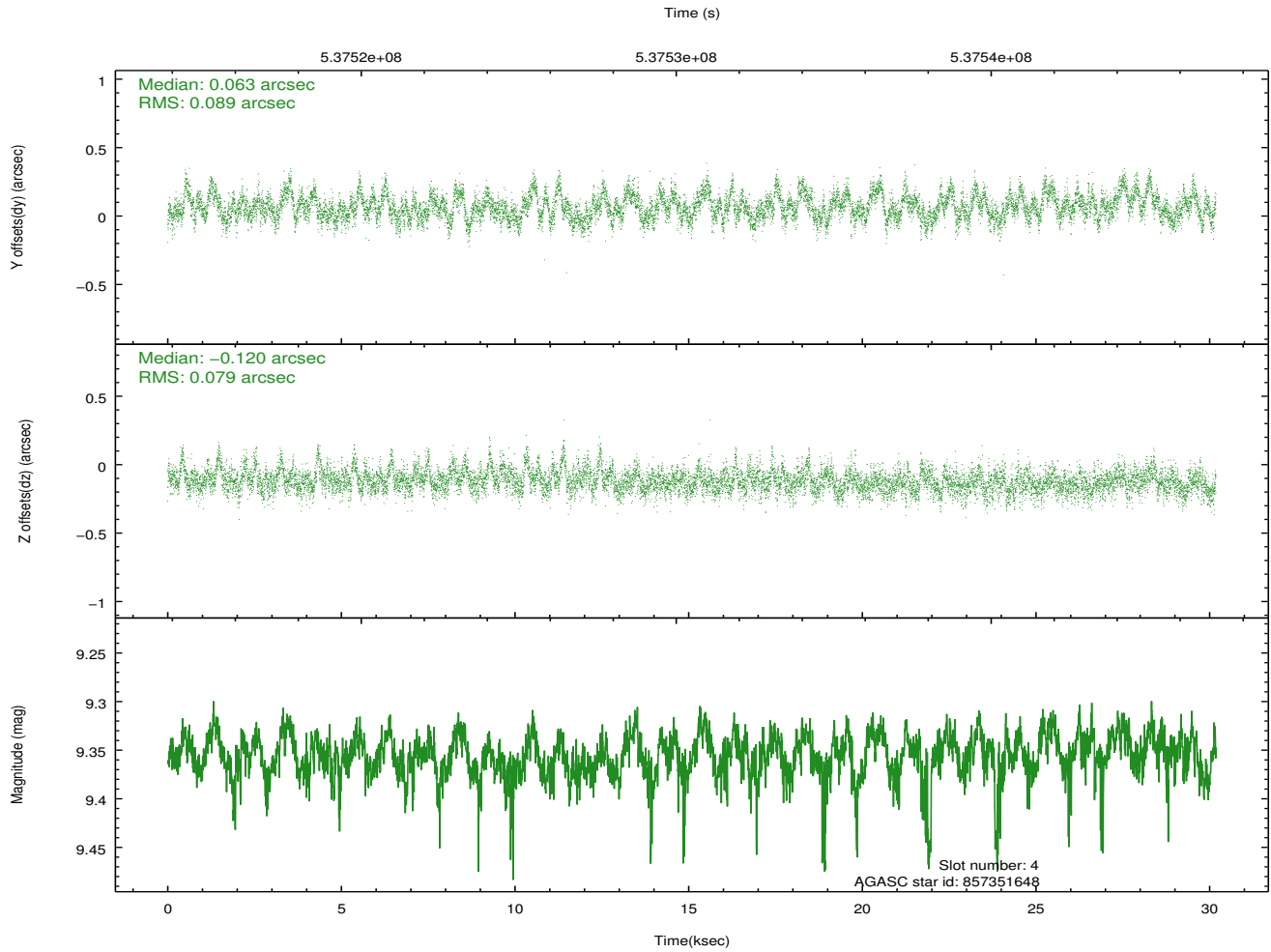
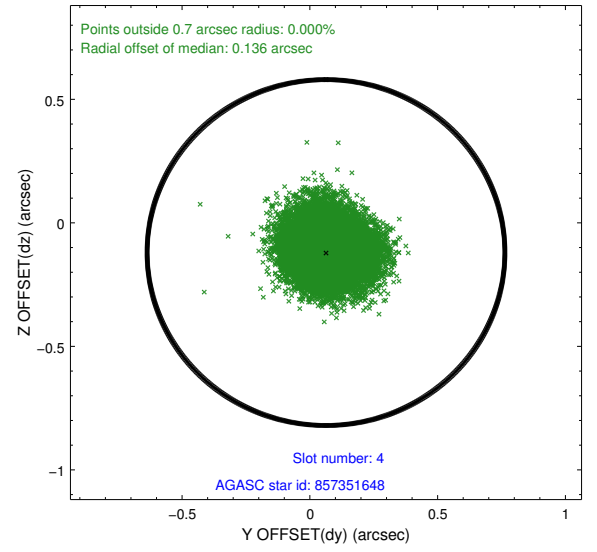
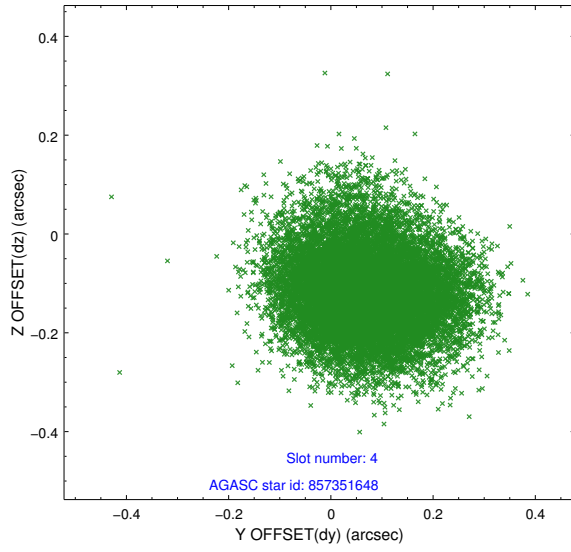
slot	status	used	id	mag	n_pts	med_dy	med_dz	dr1	dr2	ra	dec	mean_y	mean_z
0	FID		ACIS-S-1	7.09	7362	0.248	-0.112	0.016	0.034	0.000000	0.000000	925.49	-1733.52
1	FID		ACIS-S-2	7.01	7362	-0.105	0.031	0.016	0.040	0.000000	0.000000	-770.73	-1738.07
2	FID		ACIS-S-5	7.11	7361	-0.164	0.096	0.018	0.042	0.000000	0.000000	-1824.17	164.07
3	GUIDE	used	856819512	8.34	14720	-0.074	-0.132	0.114	0.180	109.292794	-24.352083	-1076.71	2267.43
4	GUIDE	used	857351648	9.35	14718	0.063	-0.120	0.127	0.206	109.161947	-24.543697	-1538.48	1599.45
5	GUIDE	used	857362176	7.45	14722	0.101	0.280	0.107	0.172	109.209415	-25.159020	-1490.50	-620.33
6	GUIDE	used	857355920	8.53	14720	-0.204	0.071	0.073	0.120	109.209605	-24.691775	-1408.71	1059.43
7	GUIDE	used	857375848	8.79	14715	0.099	-0.108	0.102	0.171	109.695507	-24.655080	185.79	1111.44

2.4 Star Slots

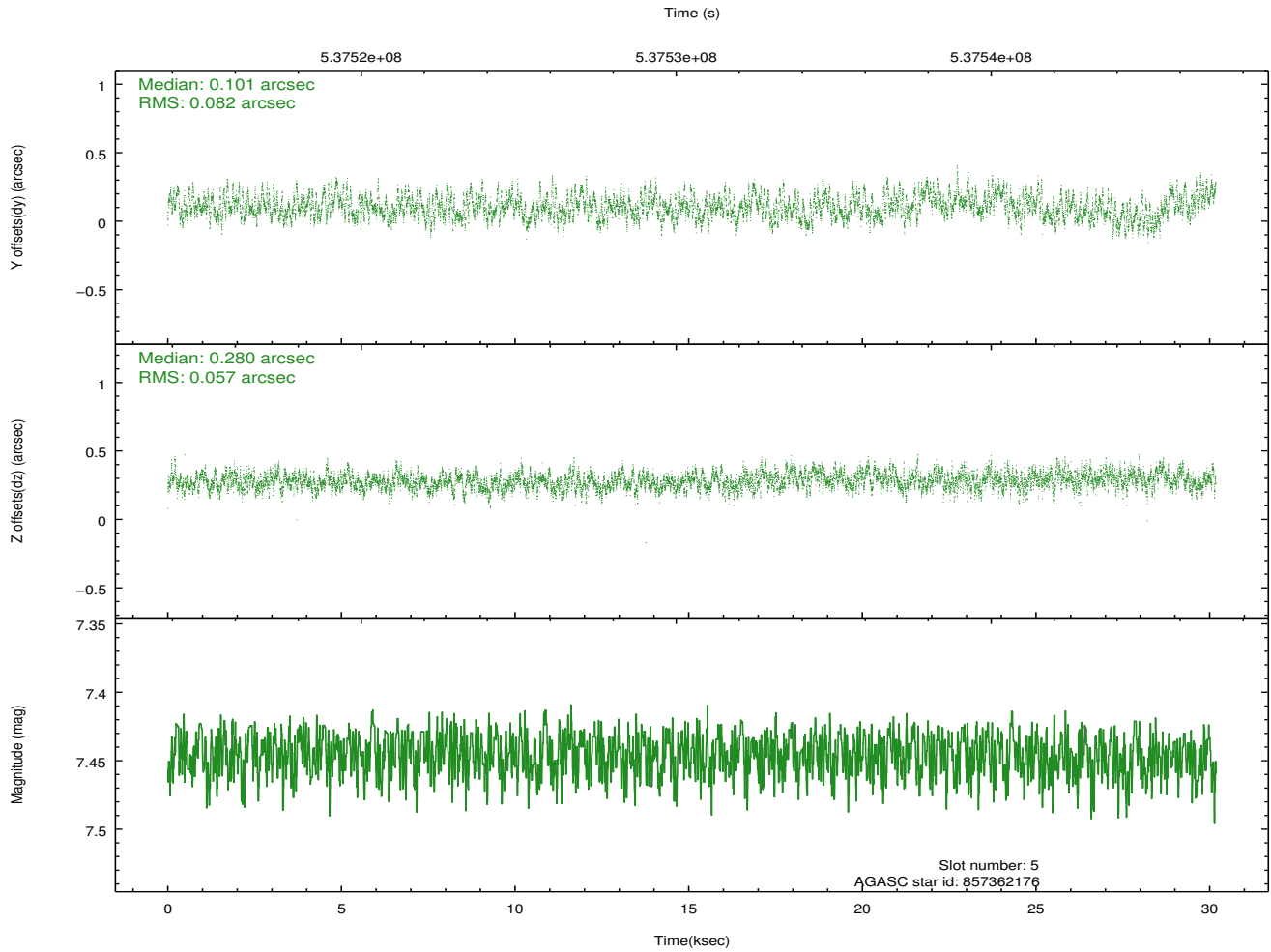
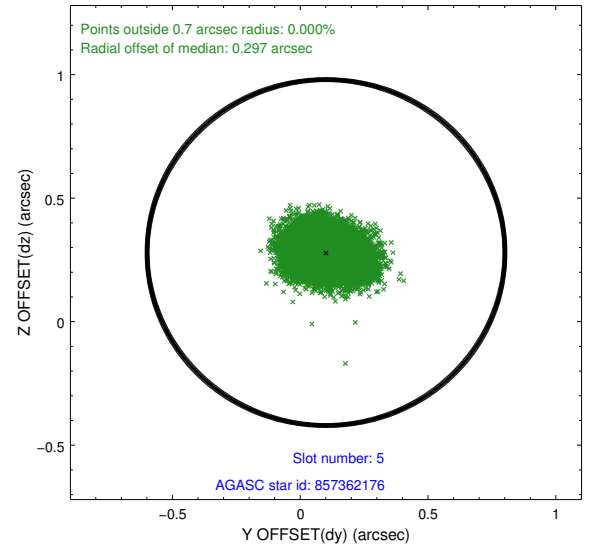
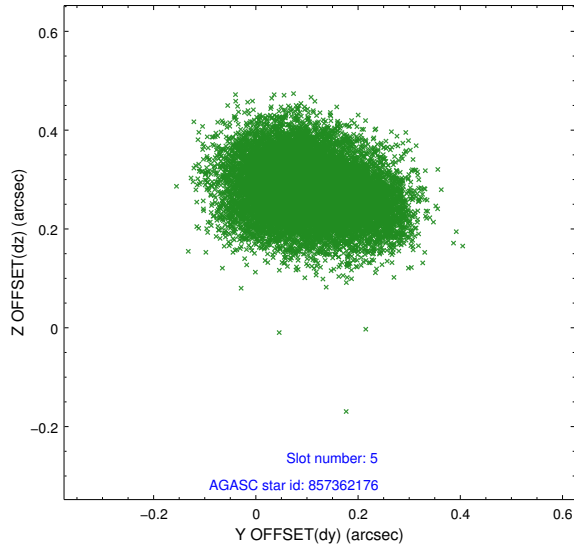
2.4.1 Slot 3



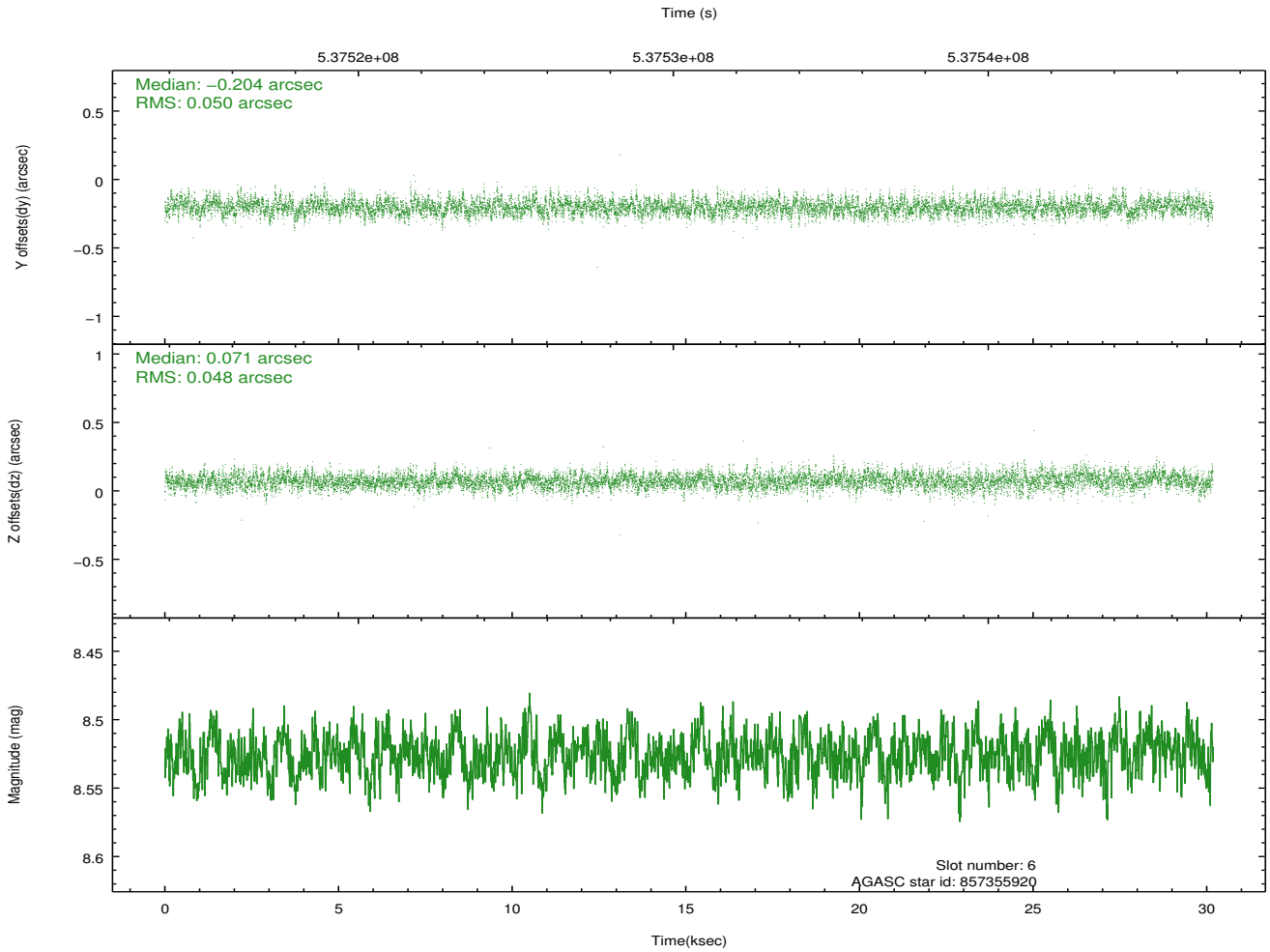
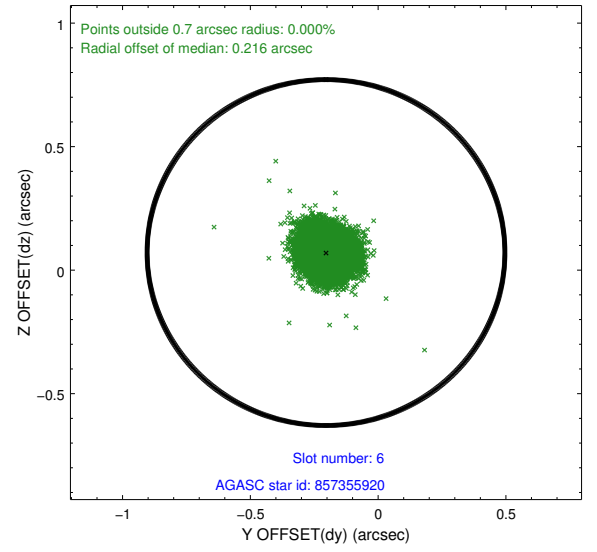
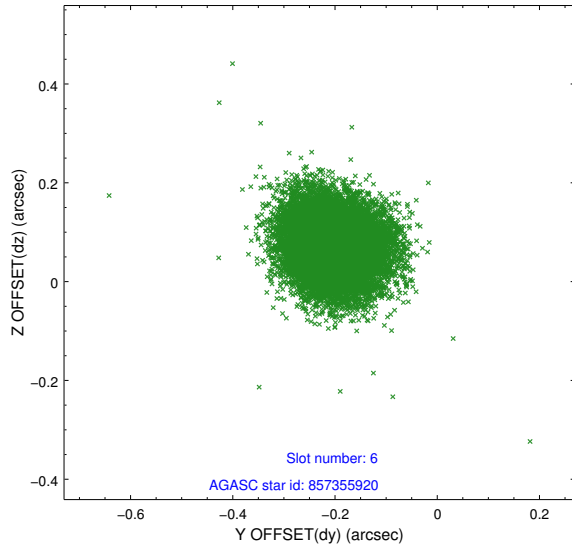
2.4.2 Slot 4



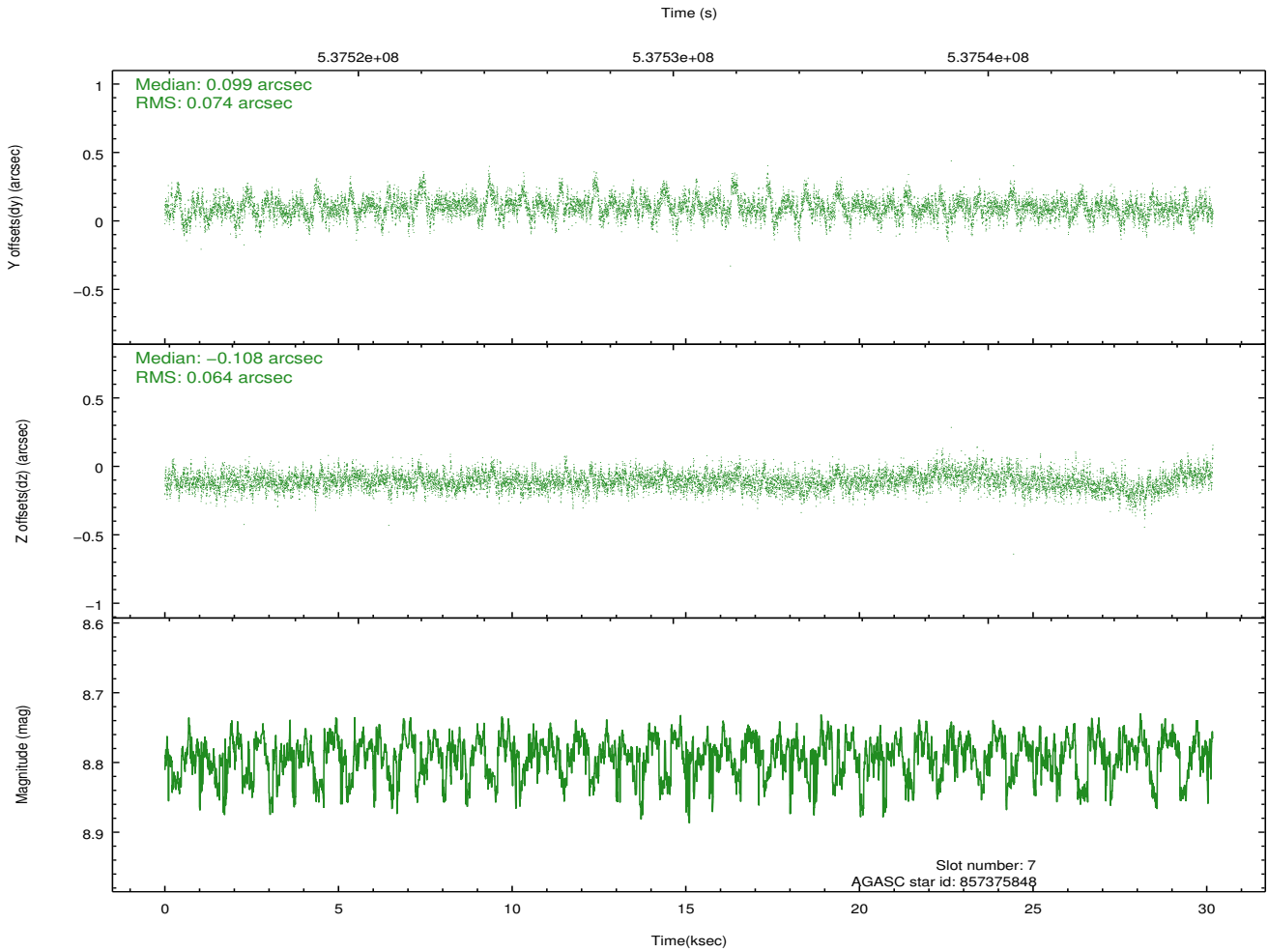
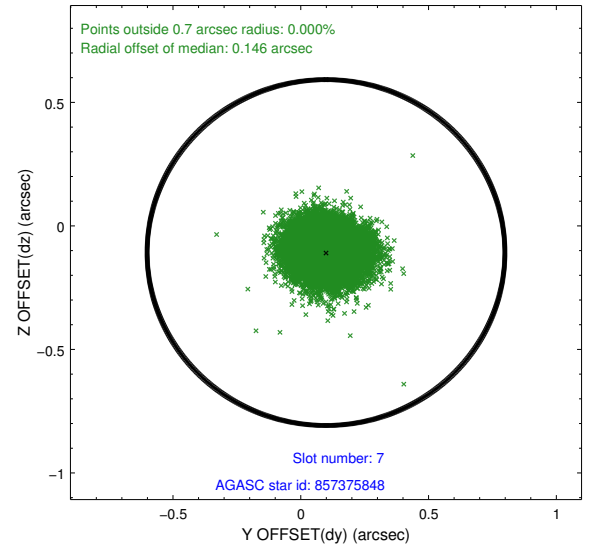
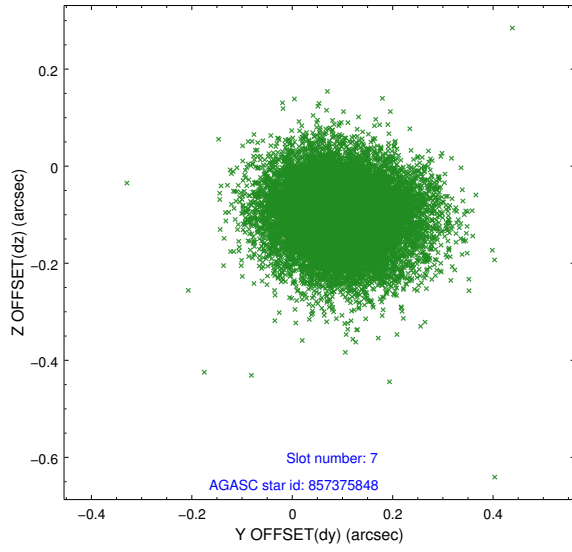
2.4.3 Slot 5



2.4.4 Slot 6

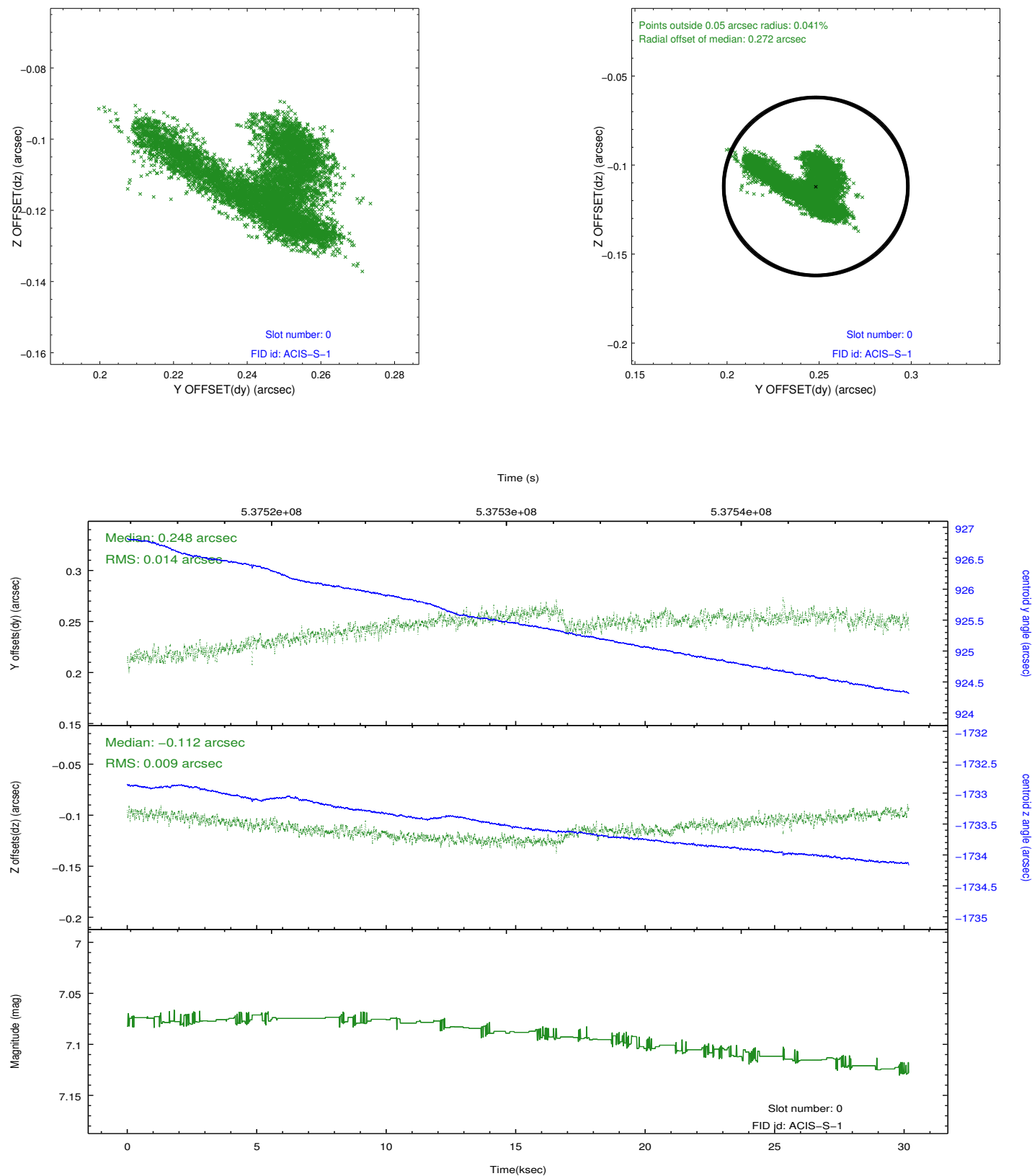


2.4.5 Slot 7

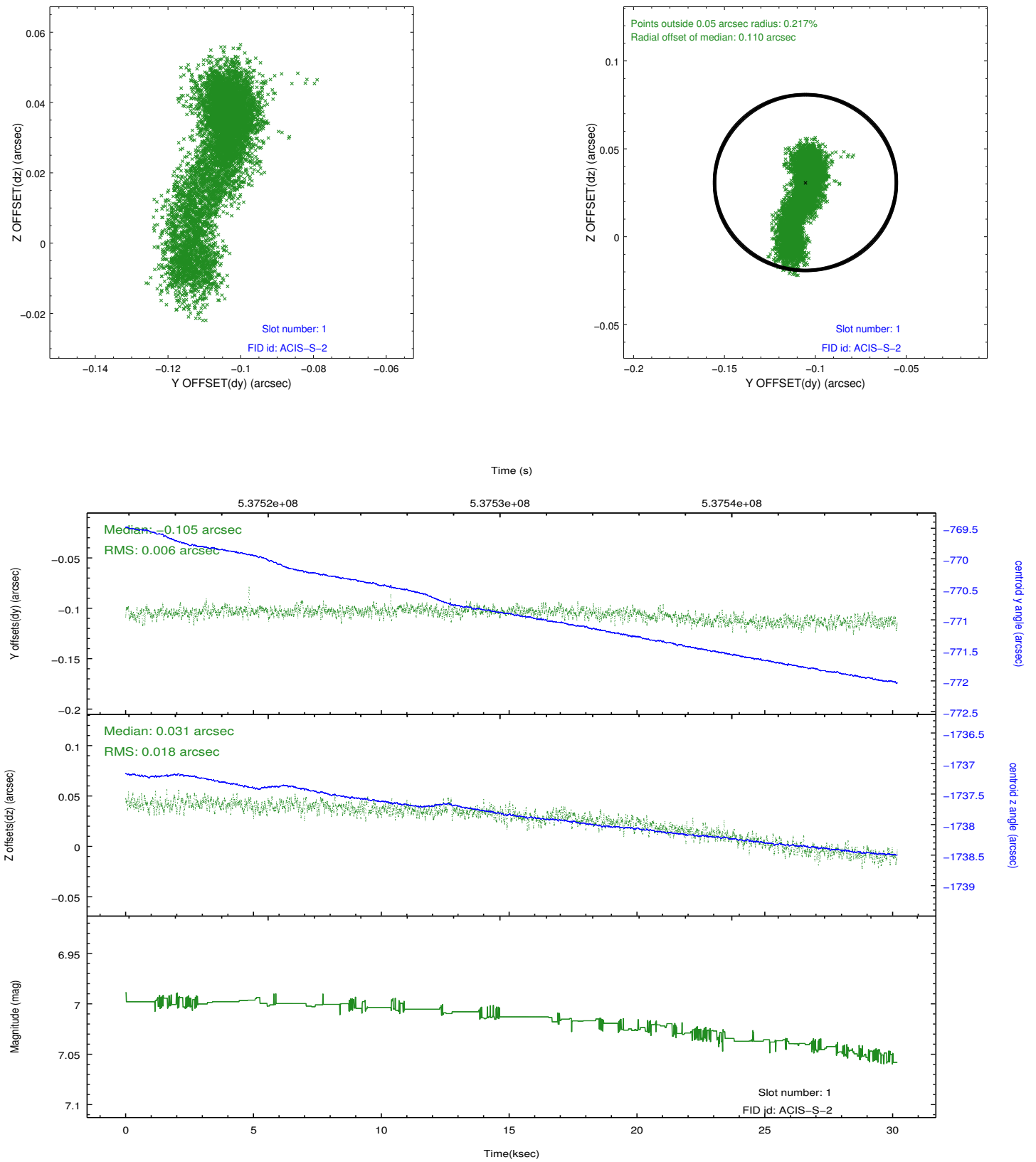


2.5 FID Slots

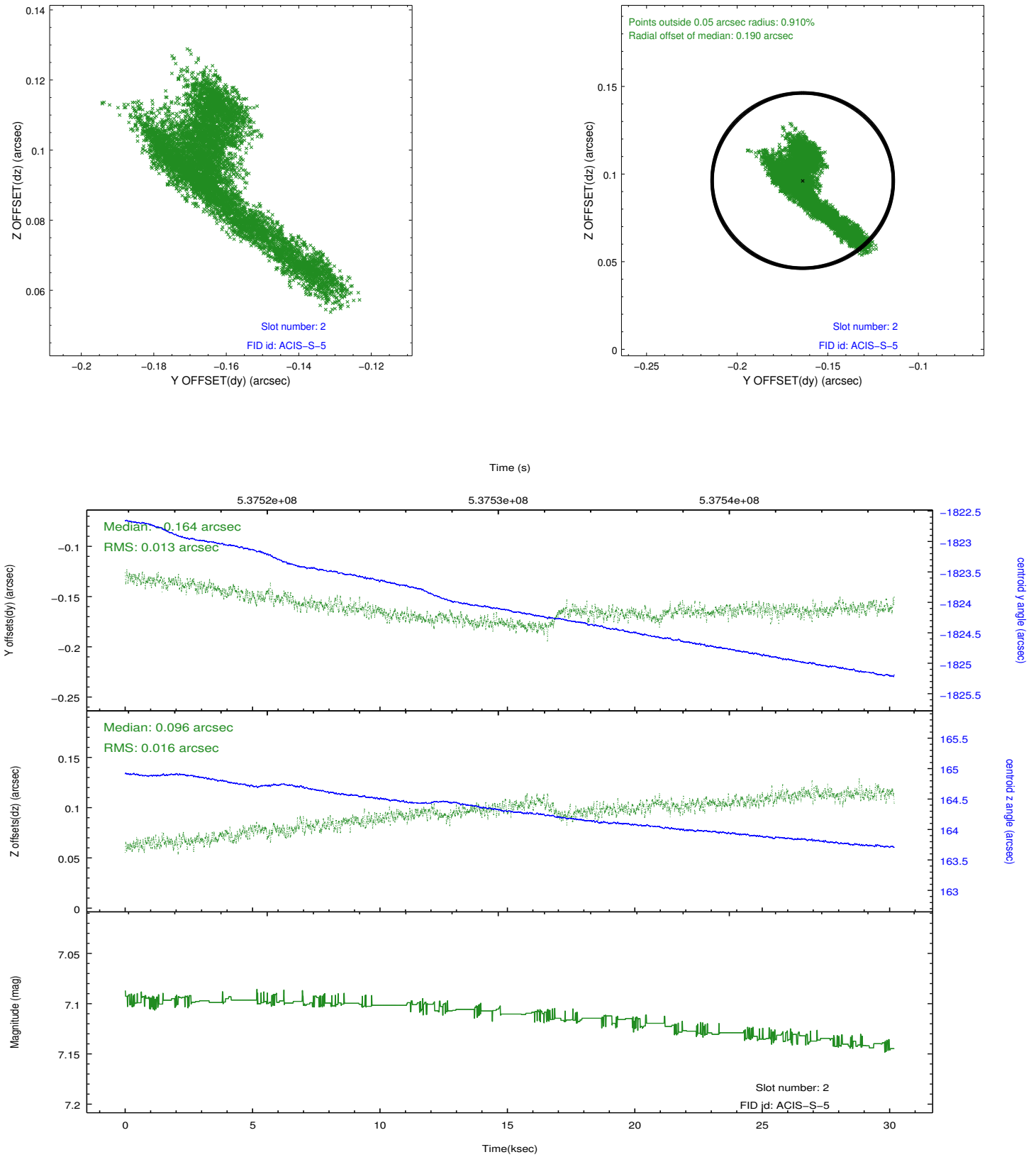
2.5.1 Slot 0



2.5.2 Slot 1

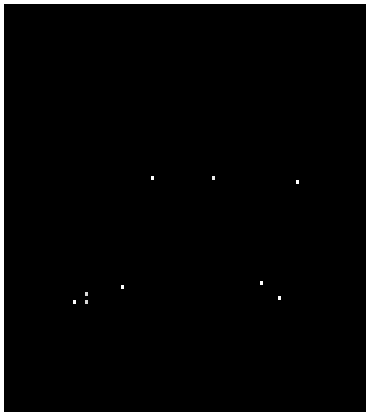


2.5.3 Slot 2

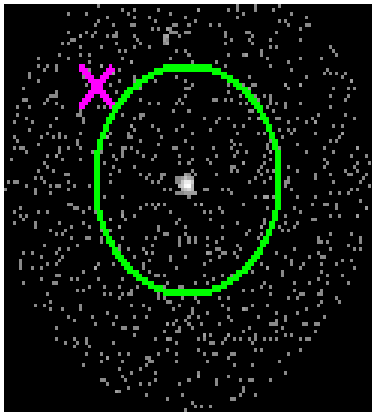


3 Gratings

3.1 HEG Arm



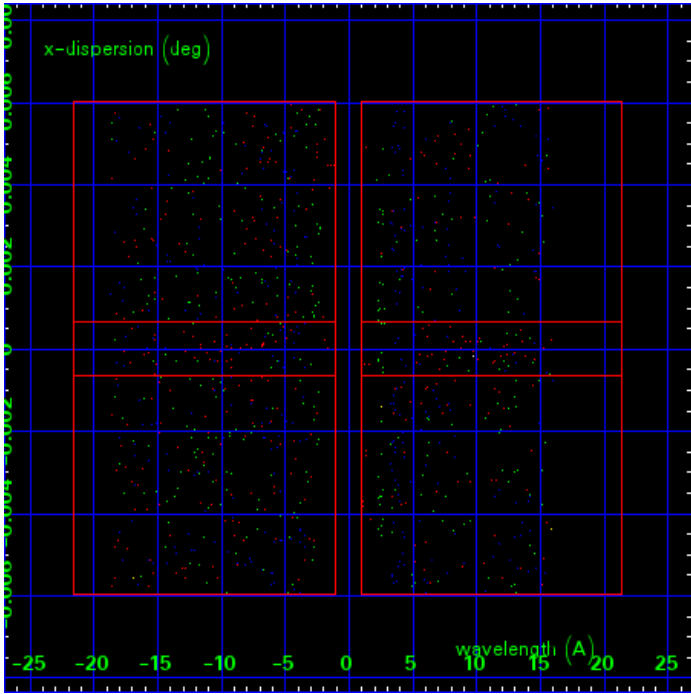
HEG Order Sort 123



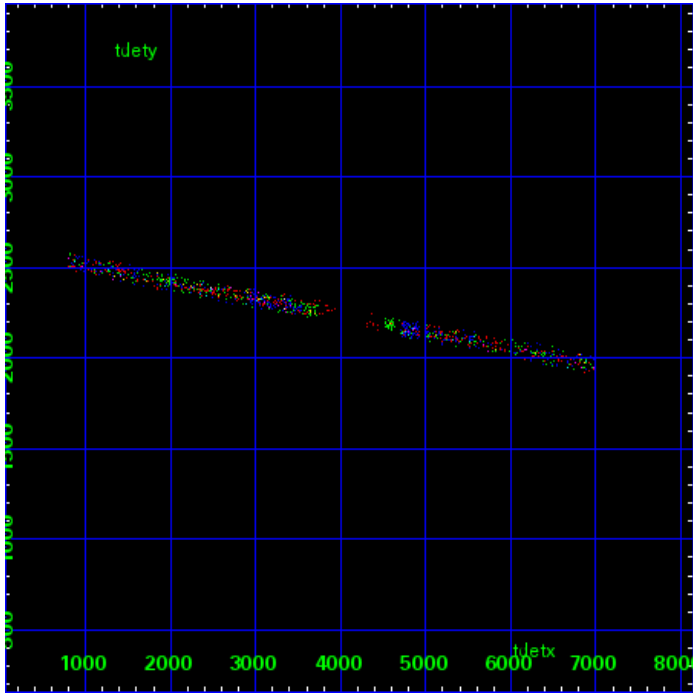
HEG Zero Order



HEG Order Sort ALL

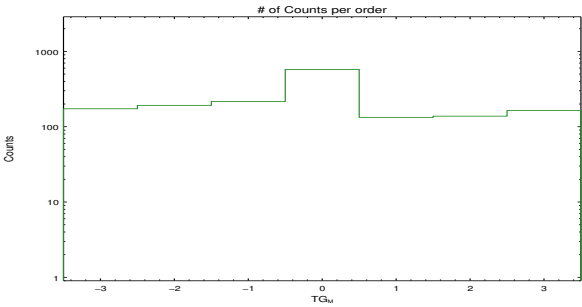


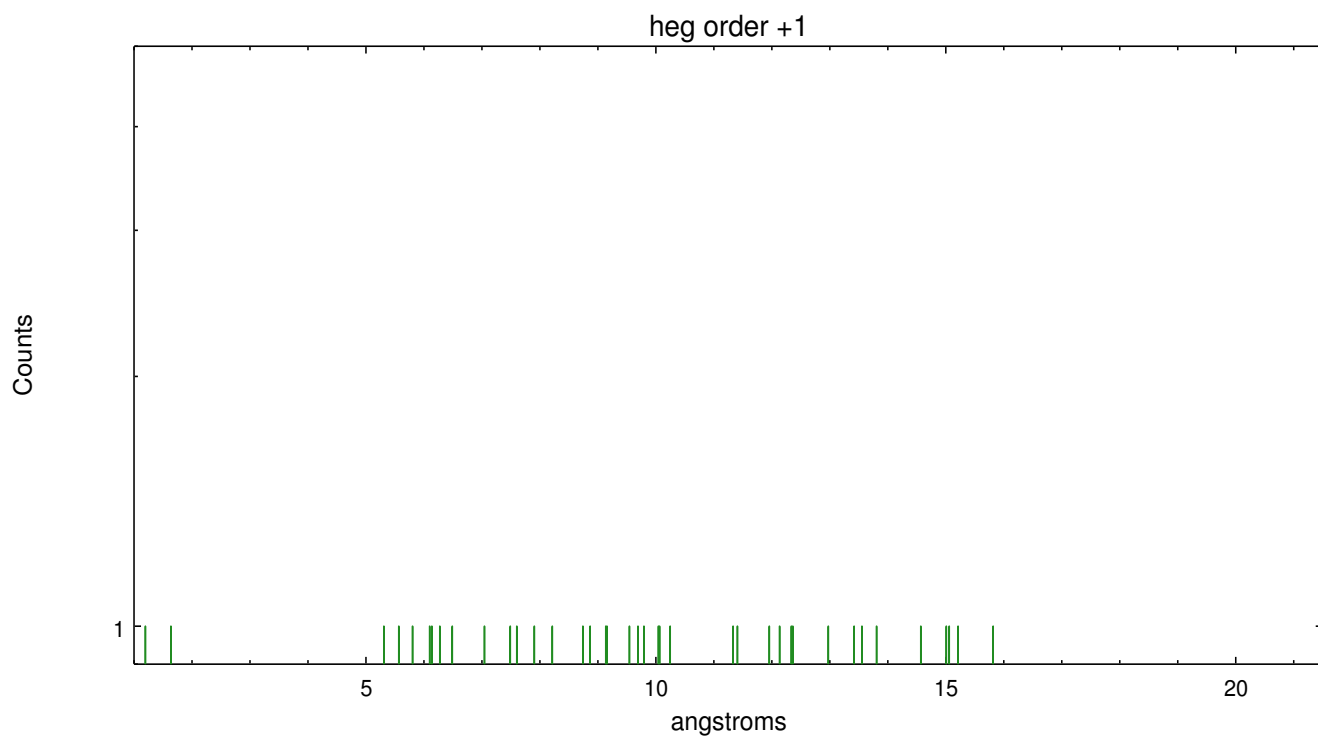
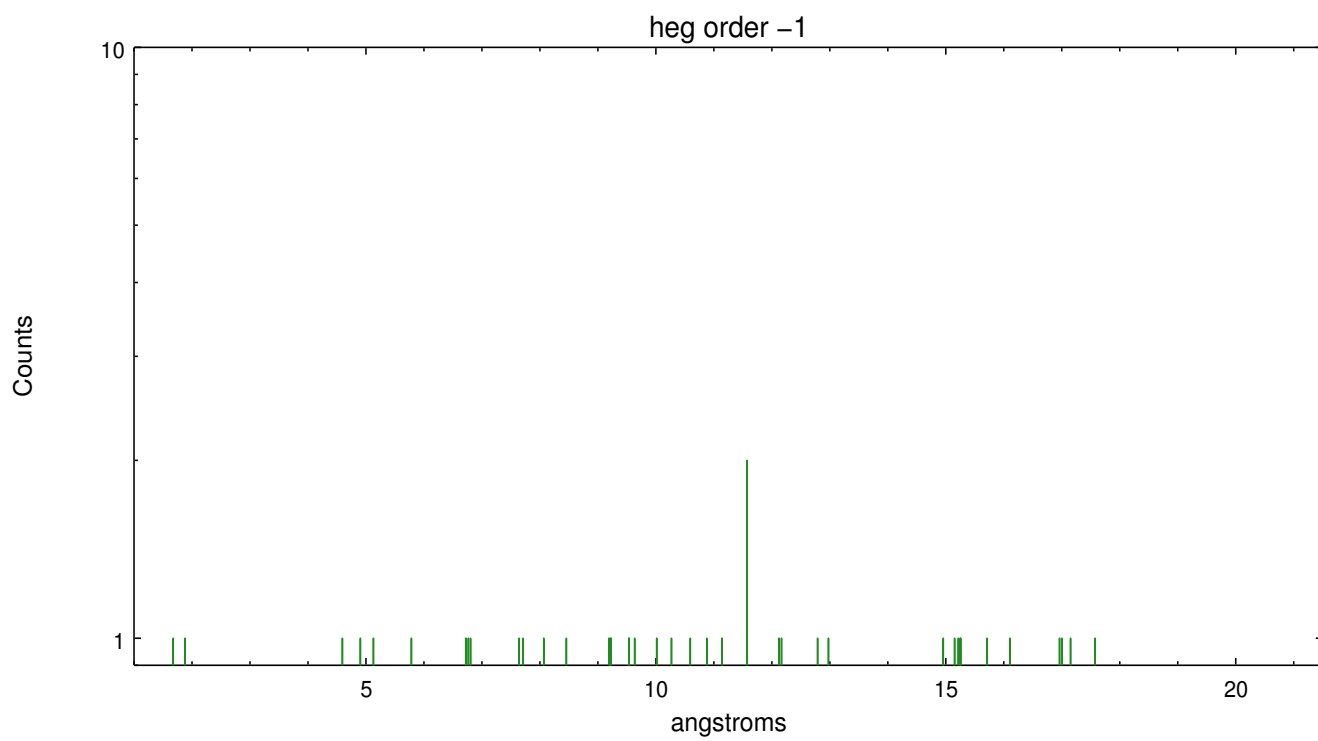
Spot Image HEG



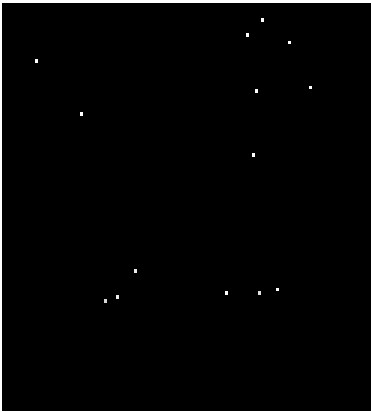
Full Detector HEG

	order -3	order -2	order -1	order 0	order 1	order 2	order 3
Events	173	192	216	576	133	138	164

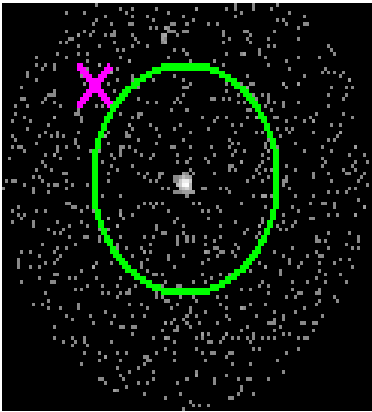




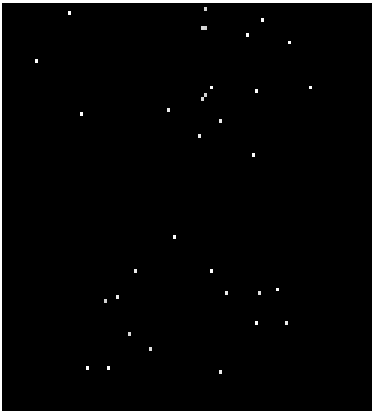
3.2 MEG Arm



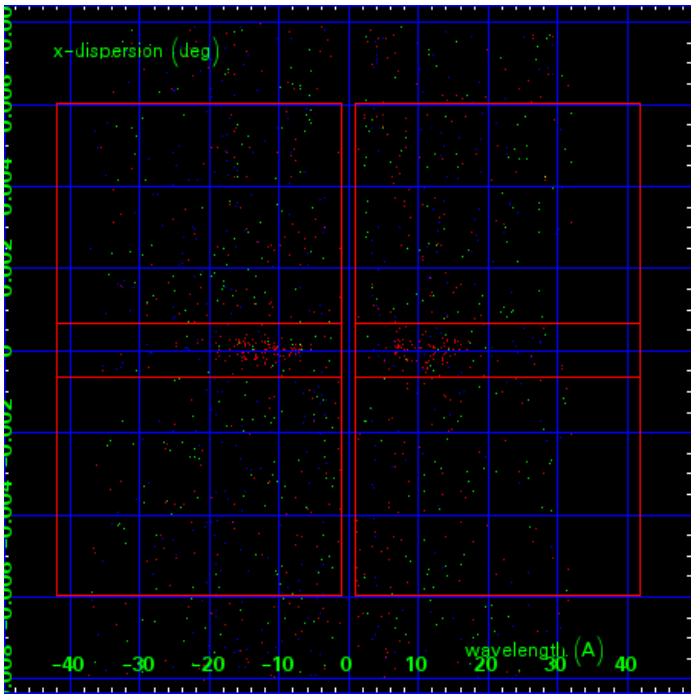
MEG Order Sort 123



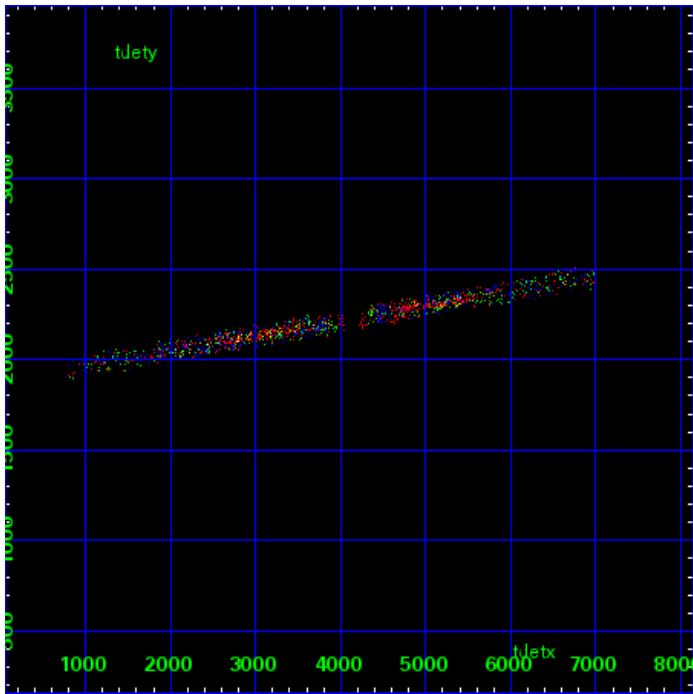
MEG Zero Order



MEG Order Sort ALL

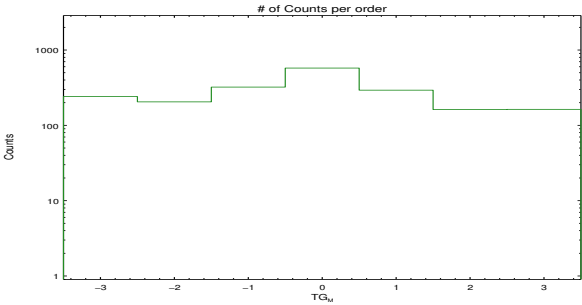


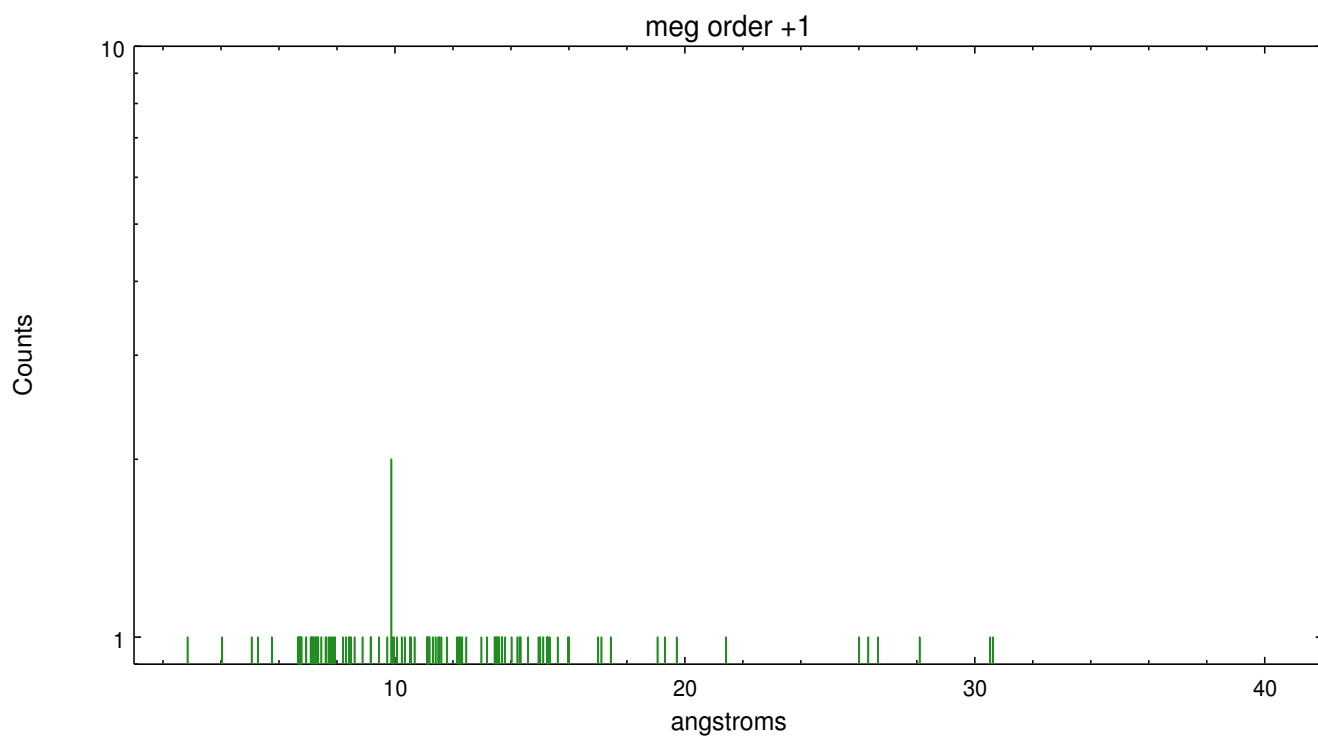
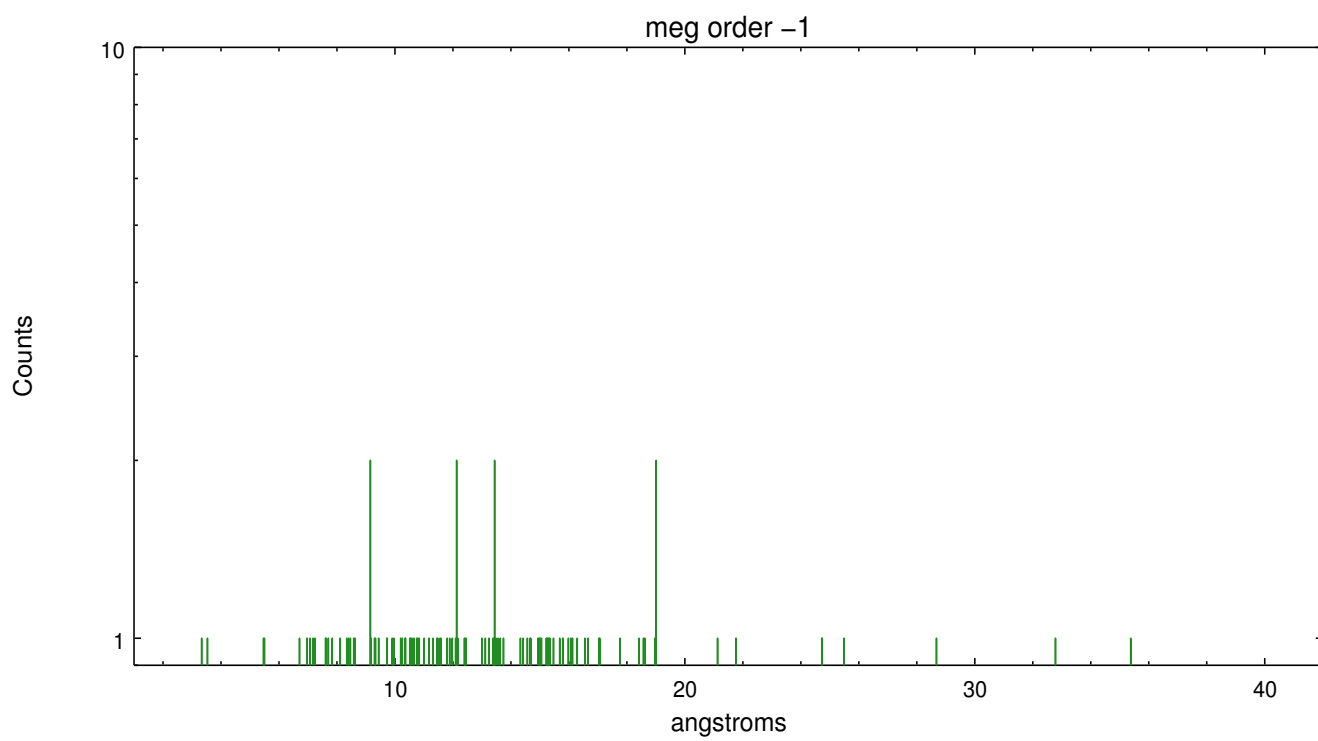
Spot Image MEG



Full Detector MEG

	order -3	order -2	order -1	order 0	order 1	order 2	order 3
Events	241	205	322	576	293	162	163





A Summary

A.1 Status

V&V Scientist	Joy Nichols
V&V Date (YYYY-MM-DD)	2015.01.14
V&V Edition	1
V&V Disposition and Status	OK
V&V Charge Time	29.961600446463

A.2 Comments