

V&V Reference Report

L2 ASCDS Version : 10.4.3.1

Observation 17440 - L2 Version 1
Chandra X-Ray Center

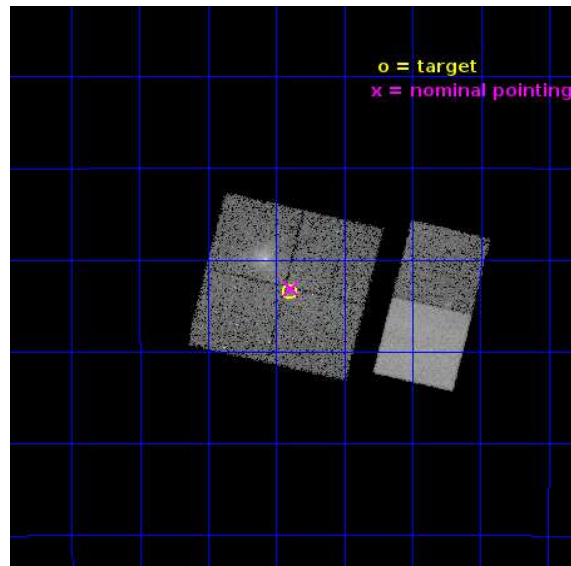
L2 Processing Date : Jun 6 2016

Contents

1	Front	2
2	OBI	3
2.1	OBI	3
2.1.1	Images	3
2.1.2	Bias	3
2.1.3	Parameters	4
2.1.4	Events	4
2.2	Compared Parameters	5
2.3	Aspect	6
2.4	Star Slots	9
2.4.1	Slot 3	9
2.4.2	Slot 4	10
2.4.3	Slot 5	11
2.4.4	Slot 6	12
2.4.5	Slot 7	13
2.5	FID Slots	14
2.5.1	Slot 0	14
2.5.2	Slot 1	15
2.5.3	Slot 2	16
A	Summary	17
A.1	Status	17
A.2	Comments	17

1 Front

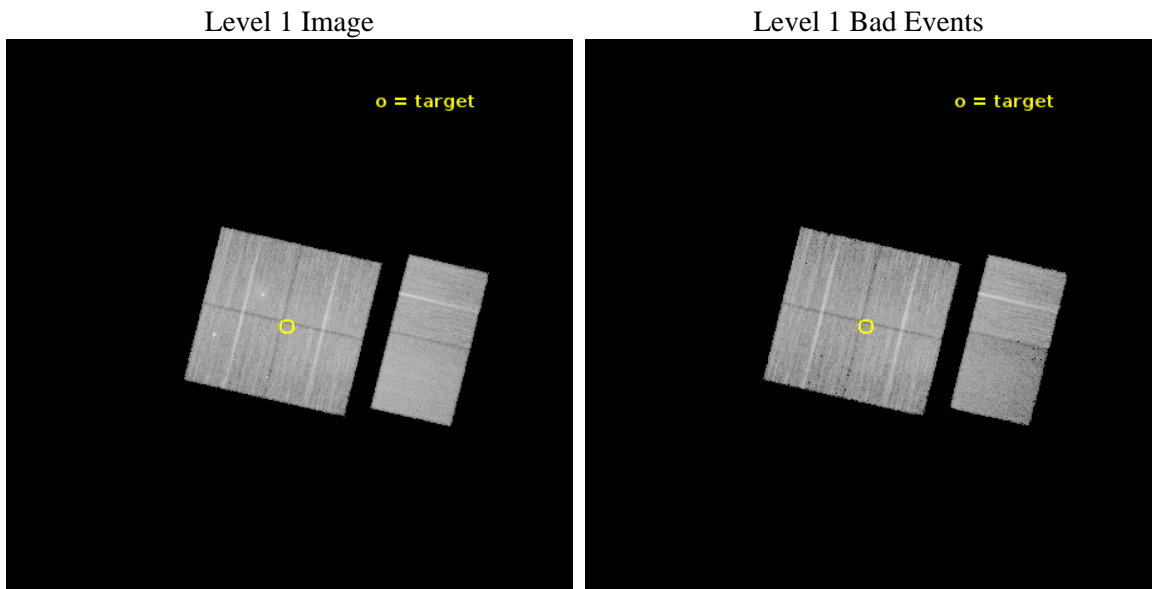
seq_num	201023	Sequence number
obs_id	17440	Observation id
title	X-rays from the Young Massive Cluster Cl 1813-178	Proposal title
observer	Gordon Garmire	Principal investigator
object	Cl 1813-178	Source name
dtcycle	0	
cycle	P	events from which exps? Prim/Second/Both
ra_targ	273.35125	Observer's specified target RA [deg]
dec_targ	-17.891889	Observer's specified target Dec [deg]
ra_nom	273.34691606373	Nominal RA [deg]
dec_nom	-17.885714561496	Nominal Dec [deg]
roll_nom	103.44735300271	Nominal Roll [deg]
revision	1	Processing version of data
ontime	16940.266658187	Sum of GTIs [s]
livetime	16725.758801557	Livetime [s]
ontime0	16949.866669178	Sum of GTIs [s]
ontime1	16949.907709122	Sum of GTIs [s]
ontime2	16949.948749185	Sum of GTIs [s]
ontime3	16940.266658187	Sum of GTIs [s]
ontime6	16950.071869135	Sum of GTIs [s]
ontime7	16950.030829191	Sum of GTIs [s]
l2events	113178	Number of level 2 events



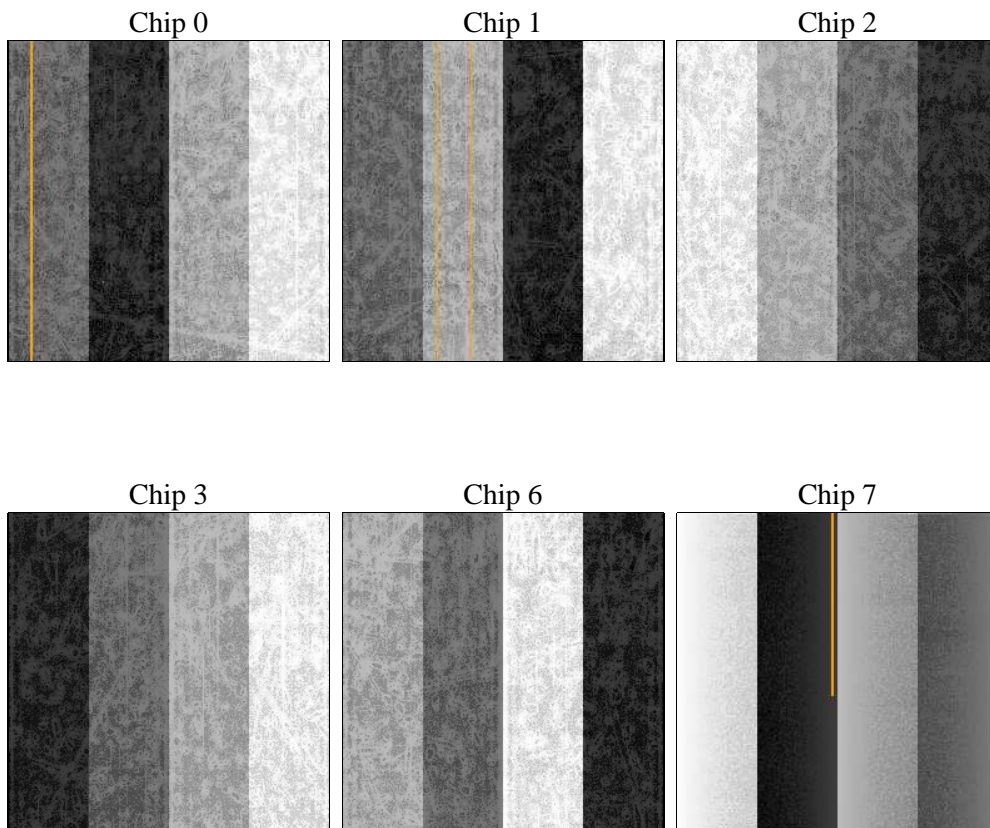
2 OBI

2.1 OBI

2.1.1 Images



2.1.2 Bias



2.1.3 Parameters

obi_num	2	Obi number	sched_exp_time	17000.000000	[s] Scheduled observation exposure time
ascdsver	10.4.3.1	Processing system revision	ontime	16940.266658187	Sum of GTIs [s]
caldsver	4.7.2	 	ontime0	16949.866669178	Sum of GTIs [s]
date	2016-06-06T13:27:14	Date and time of file creation	ontime1	16949.907709122	Sum of GTIs [s]
revision	1	Processing version of data	ontime2	16949.948749185	Sum of GTIs [s]
			ontime3	16940.266658187	Sum of GTIs [s]
			ontime6	16950.071869135	Sum of GTIs [s]
			ontime7	16950.030829191	Sum of GTIs [s]
			l1events	621408	Number of level 1 events

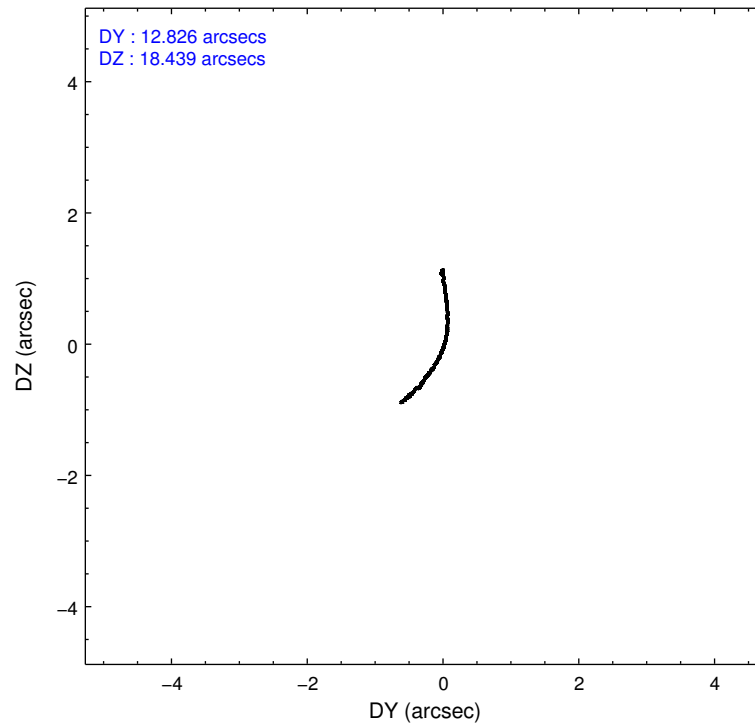
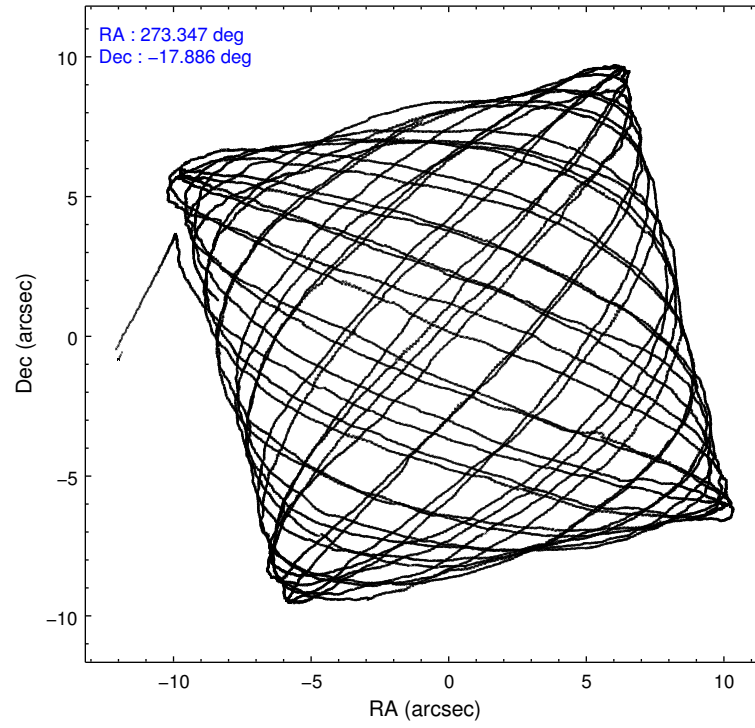
2.1.4 Events

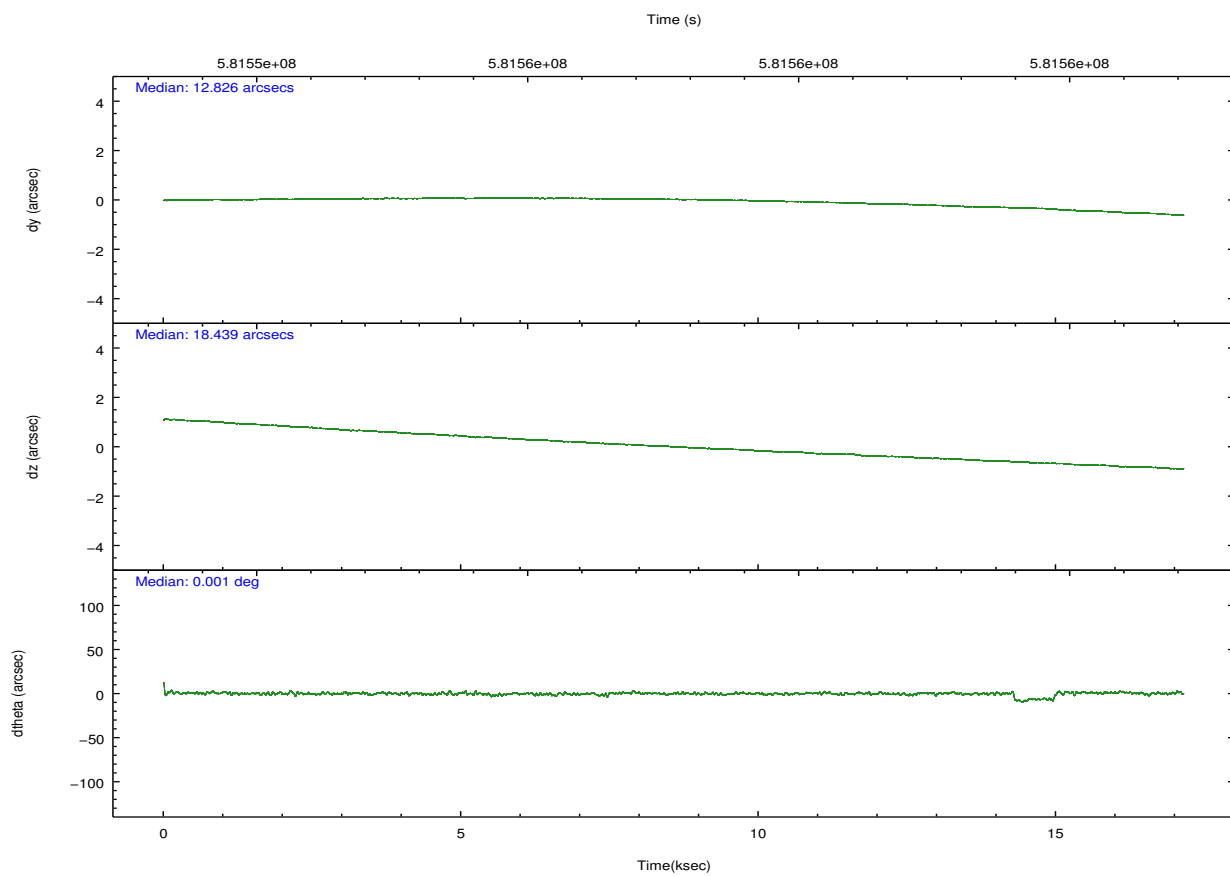
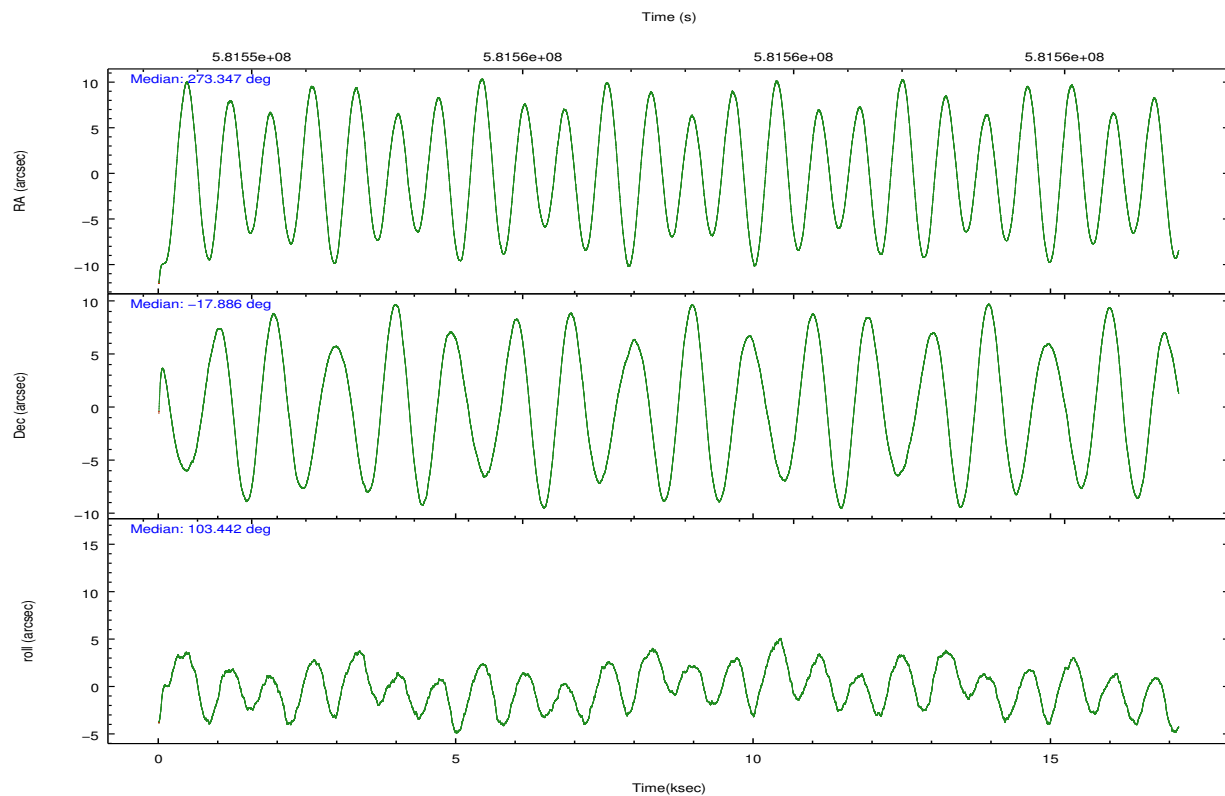
	ccd 0	ccd 1	ccd 2	ccd 3	ccd 6	ccd 7		ccd 0	ccd 1	ccd 2	ccd 3	ccd 6	ccd 7
level 1 events	100167	95191	102986	102481	106129	114454	grade 0 events	8756	6566	5812	5490	4766	5124
rejected events	81954	80341	90009	89835	93726	60296		8%	6%	5%	5%	4%	4%
rejected %	81%	84%	87%	87%	88%	52%	grade 1 events	81	60	75	46	46	176
								0%	0%	0%	0%	0%	0%
							grade 2 events	3828	3086	2955	2609	2777	12024
								3%	3%	2%	2%	2%	10%
							grade 3 events	1459	1233	1093	1198	1148	4543
								1%	1%	1%	1%	1%	3%
							grade 4 events	1427	1240	1140	1121	1152	4574
								1%	1%	1%	1%	1%	3%
							grade 5 events	3725	3962	3412	4124	4388	11751
								3%	4%	3%	4%	4%	10%
							grade 6 events	2748	2729	1978	2232	2567	27903
								2%	2%	1%	2%	2%	24%
							grade 7 events	78143	76315	86521	85661	89285	48359
								78%	80%	84%	83%	84%	42%

2.2 Compared Parameters

Parameter	Planned	Actual	Parameter	Planned	Actual
Instrument	ACIS	ACIS	Obspar format version number	7	7
Detector	ACIS-012367	ACIS-012367	Obspar file type	PREDICTED	ACTUAL
Grating	NONE	NONE	Obspar update status	NONE	UPDATED
Data mode	VFAINT	VFAINT	CCD I0 on	Y	Y
Observation mode	POINTING	POINTING	CCD I1 on	Y	Y
[deg] Pointing RA	273.366964	273.3469160637338	CCD I2 on	Y	Y
[deg] Pointing Dec	-17.905686	-17.88571456149646	CCD I3 on	Y	Y
[deg] Pointing Roll	103.244830	103.4473530027138	CCD S0 on	N	N
[mm] SIM focus pos	-0.782348	-0.7809083437167272	CCD S1 on	N	N
[mm] SIM defocus	0	0.001439871863259334	CCD S2 on	O1	Y
[mm] SIM translation stage pos	-233.592463	-233.5874344608287	CCD S3 on	O2	Y
[mm] SIM translation stage offset	0	-0.005018542100998502	CCD S4 on	N	N
[s] Observation start time (MET)	581549275.184000	581547945.02337	CCD S5 on	N	N
Observation start date	2016-06-05T21:26:47	2016-06-05T21:05:45	Number of optional ACIS chips dropped	0	0
[s] Observation end time (MET)	581566275.184000	581567374.92448	On-chip summing requested	N	N
Observation end date	2016-06-06T02:10:07	2016-06-06T02:29:34	Subarray requested	NONE	NONE
Read mode	TIMED	TIMED	Alternating exposures requested	N	N
			[s] Primary exposure time	0.000000	3.2

2.3 Aspect



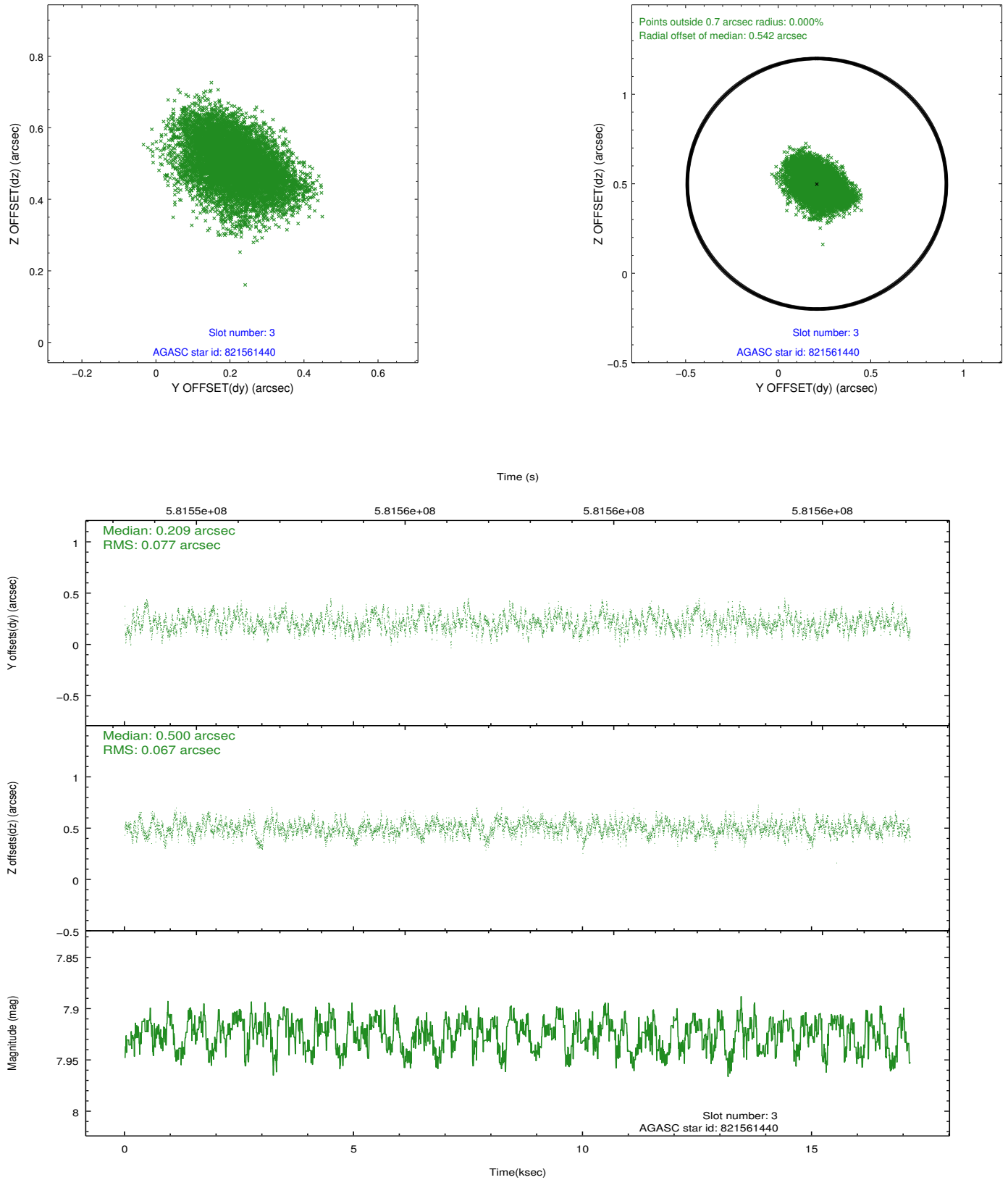


Slot Statistics

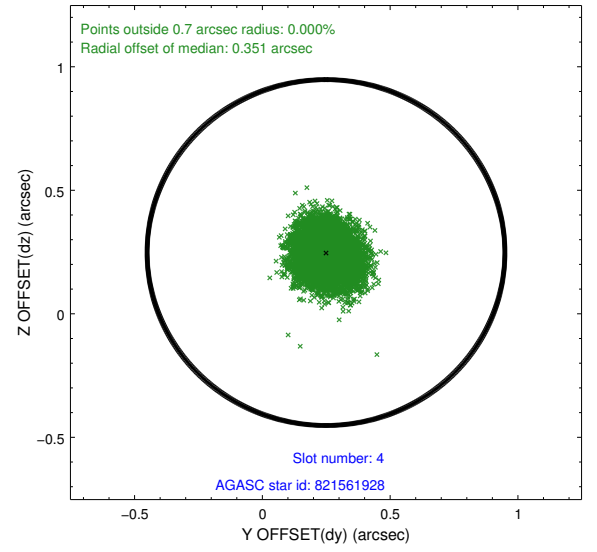
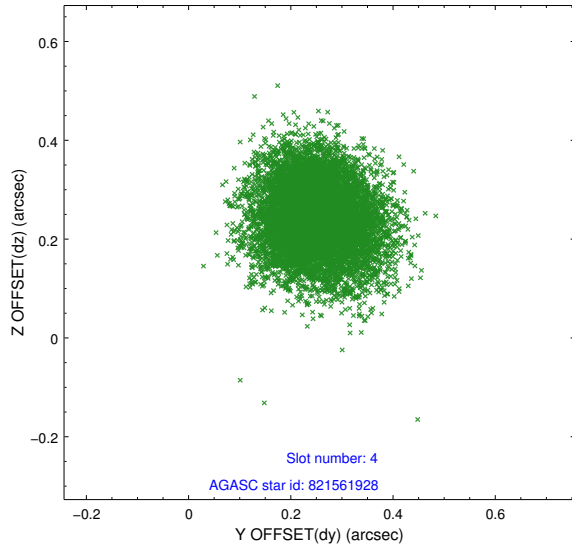
slot	status	used	id	mag	n_pts	med_dy	med_dz	dr1	dr2	ra	dec	mean_y	mean_z
0	FID		ACIS-I-1	7.24	4182	-0.019	0.027	0.013	0.034	0.000000	0.000000	926.73	-842.20
1	FID		ACIS-I-2	7.15	4181	-0.295	-0.145	0.014	0.028	0.000000	0.000000	-767.50	-848.84
2	FID		ACIS-I-4	7.20	4182	0.217	0.185	0.011	0.025	0.000000	0.000000	2146.84	1057.58
3	GUIDE	used	821561440	7.92	8361	0.209	0.500	0.111	0.178	273.991252	-17.607934	549.76	-2329.51
4	GUIDE	used	821561928	8.17	8357	0.249	0.248	0.098	0.159	273.412393	-18.388173	-1725.86	246.58
5	GUIDE	used	821570064	6.60	8364	-0.219	-0.269	0.062	0.101	273.185111	-17.414521	1863.71	202.84
6	GUIDE	used	821569872	8.39	8356	-0.048	-0.260	0.134	0.202	272.633264	-17.757585	1090.66	2327.31
7	GUIDE	used	821564256	8.58	8356	-0.189	-0.213	0.097	0.154	272.675357	-17.918139	494.41	2317.13

2.4 Star Slots

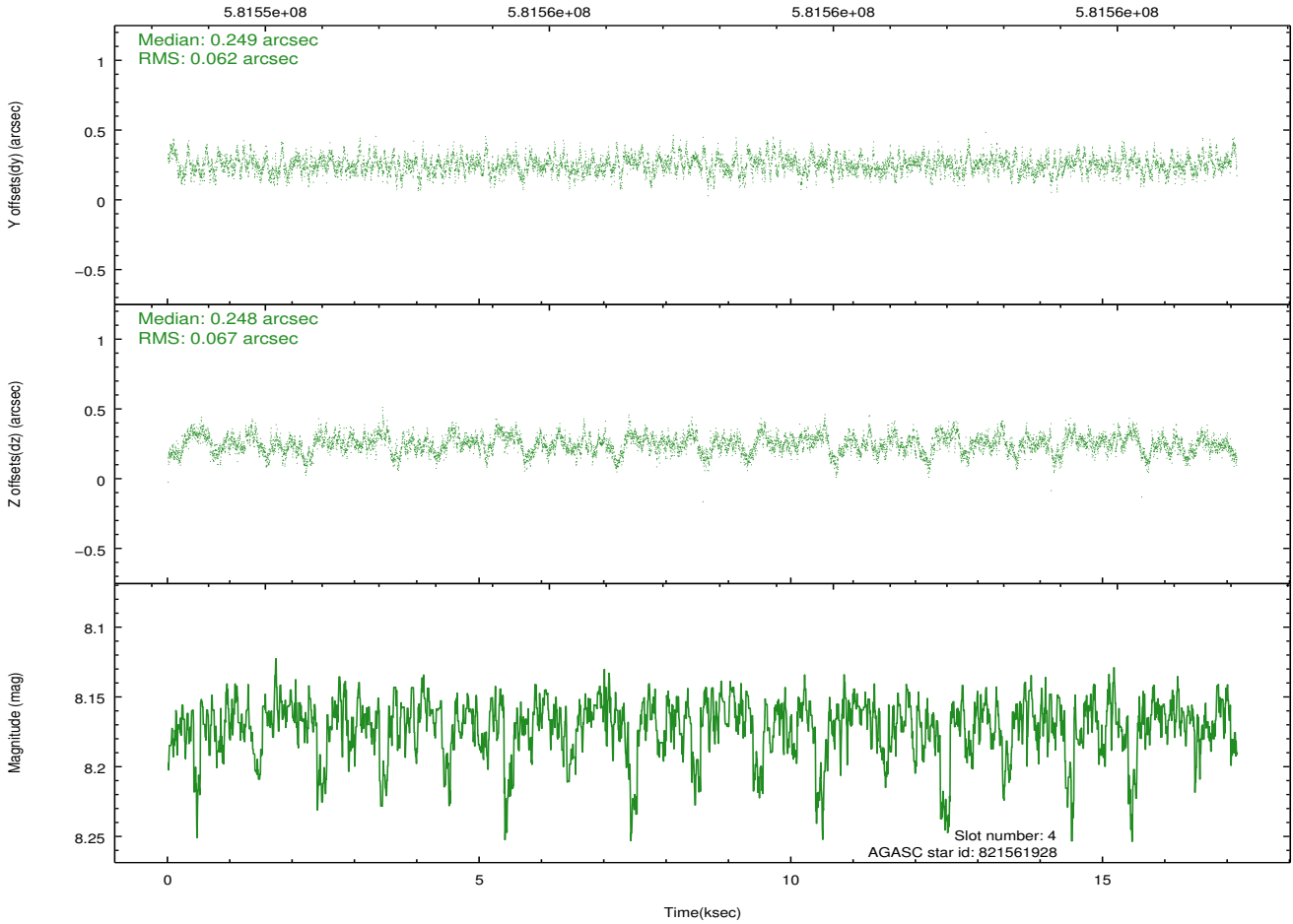
2.4.1 Slot 3



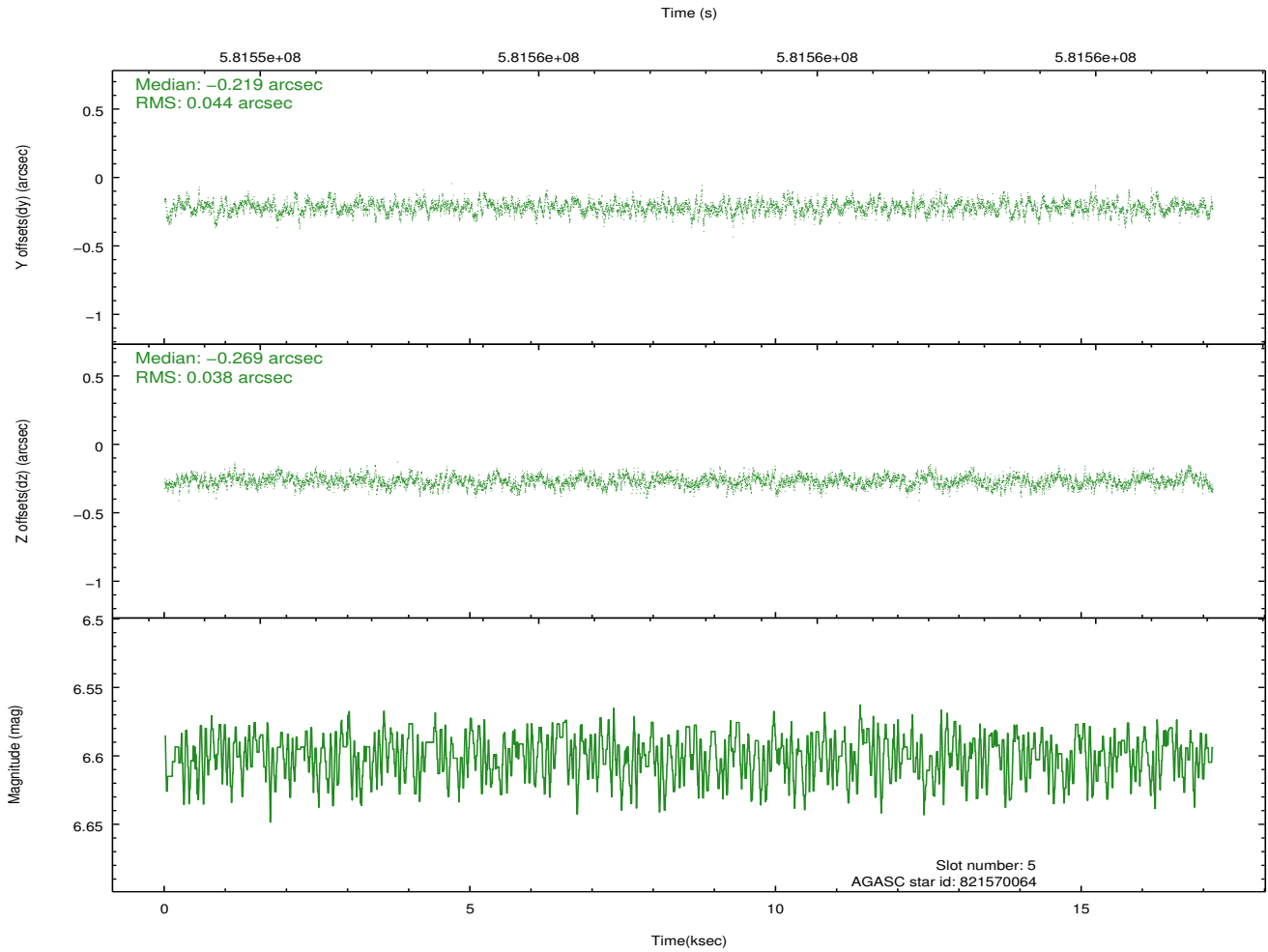
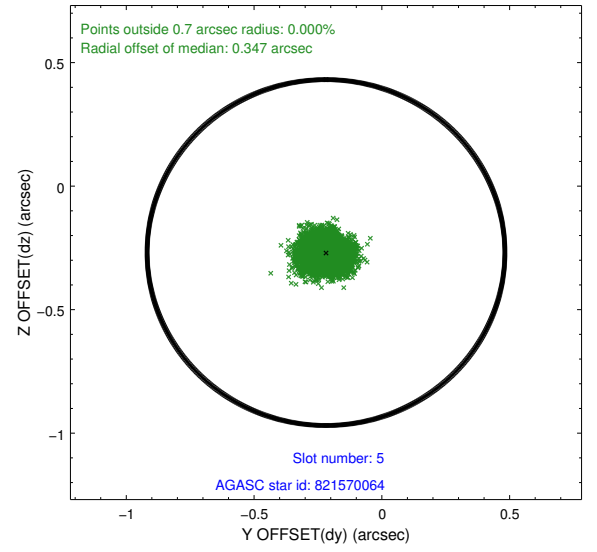
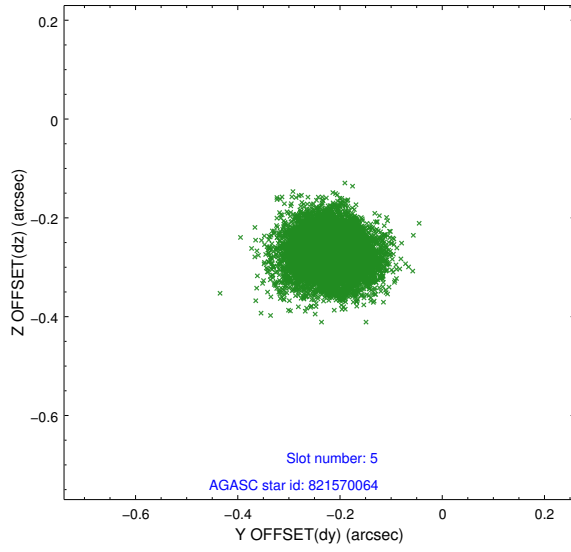
2.4.2 Slot 4



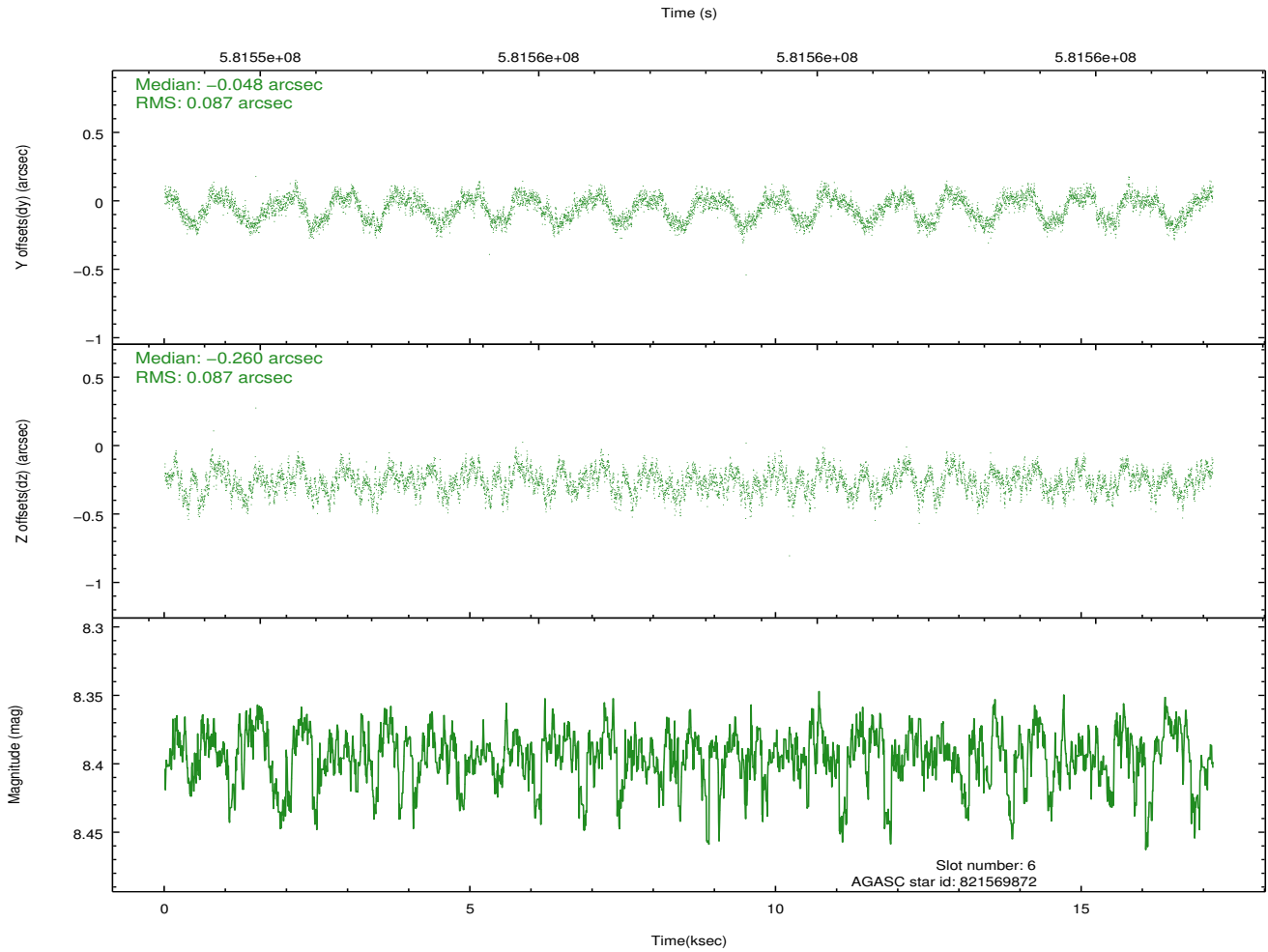
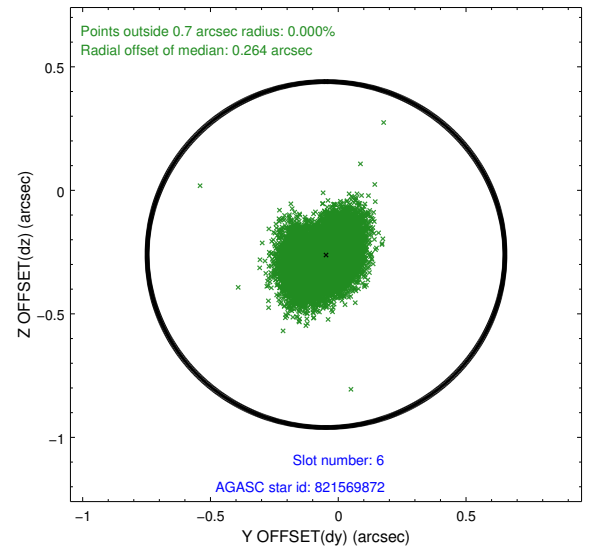
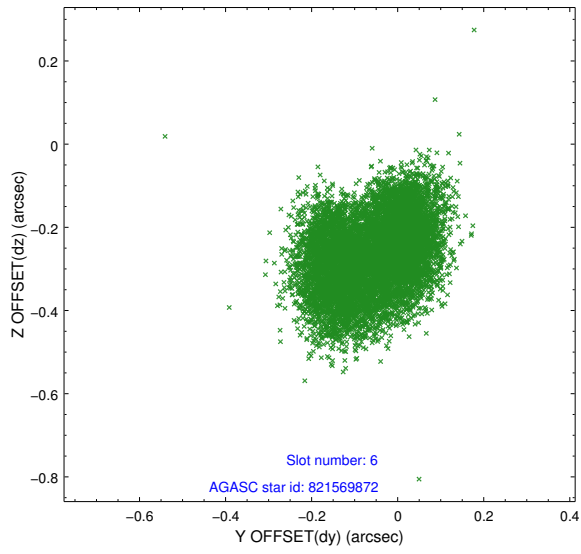
Time (s)



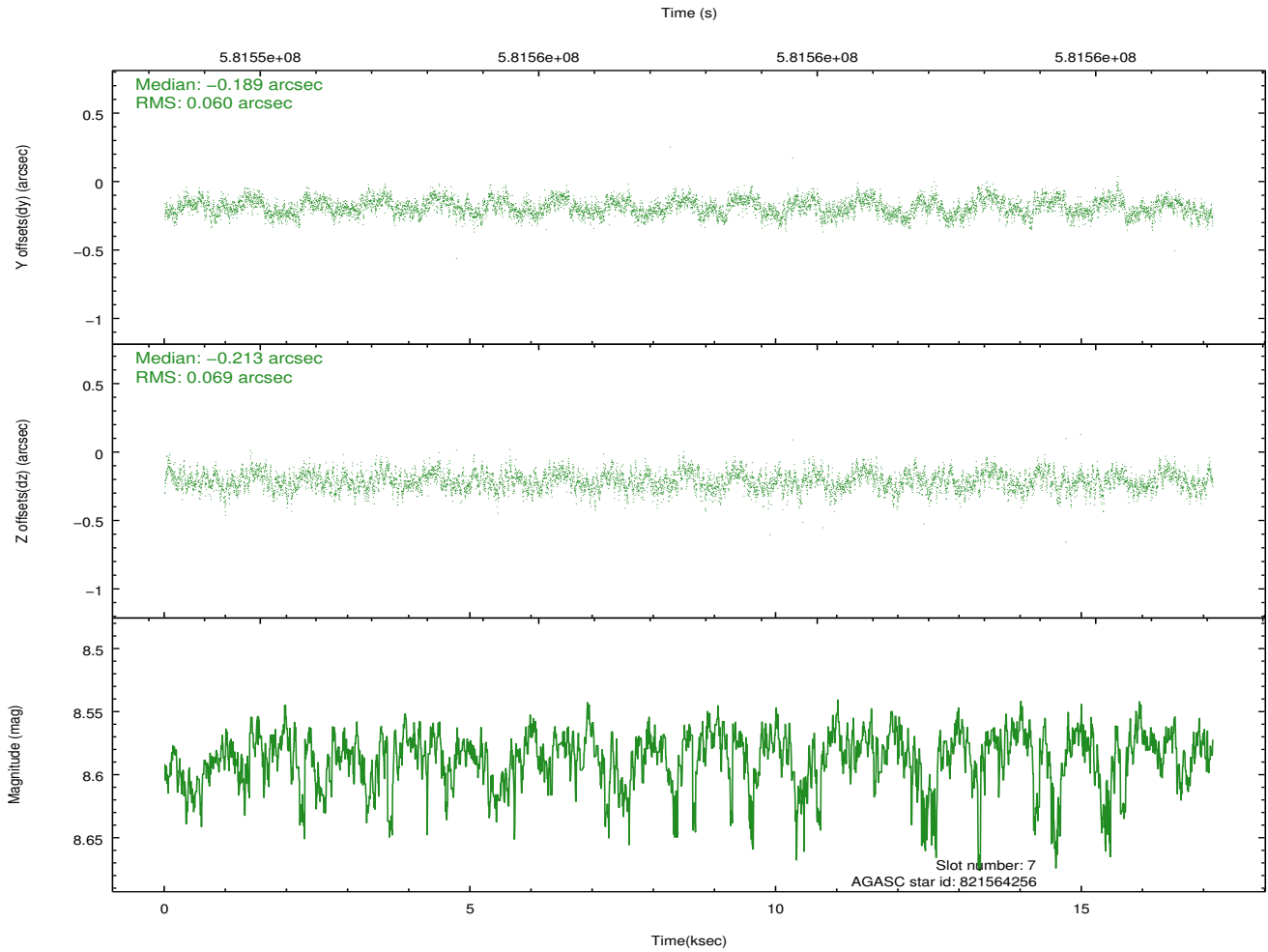
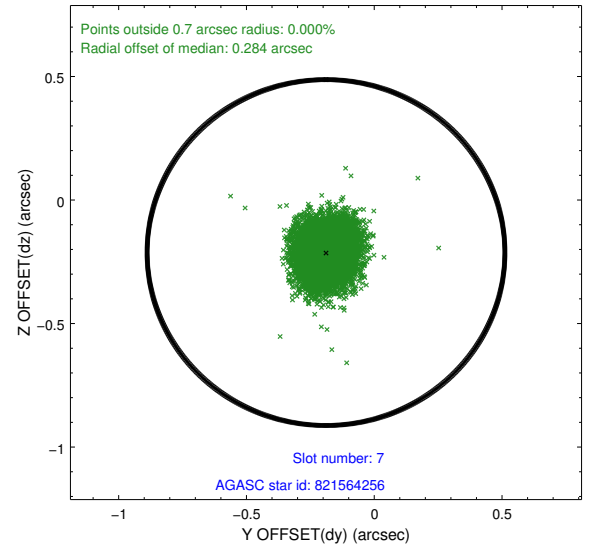
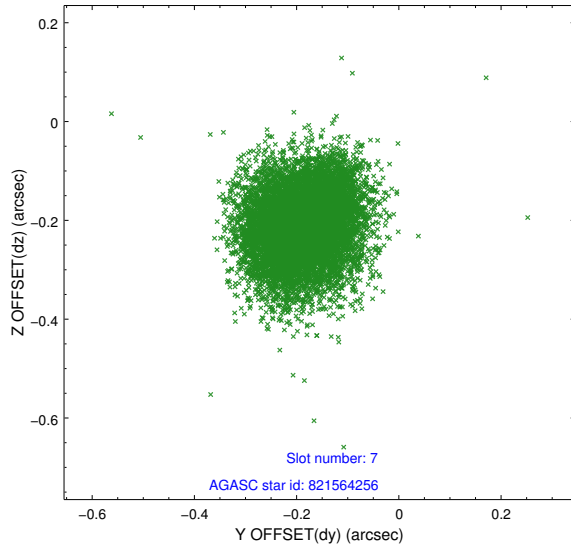
2.4.3 Slot 5



2.4.4 Slot 6

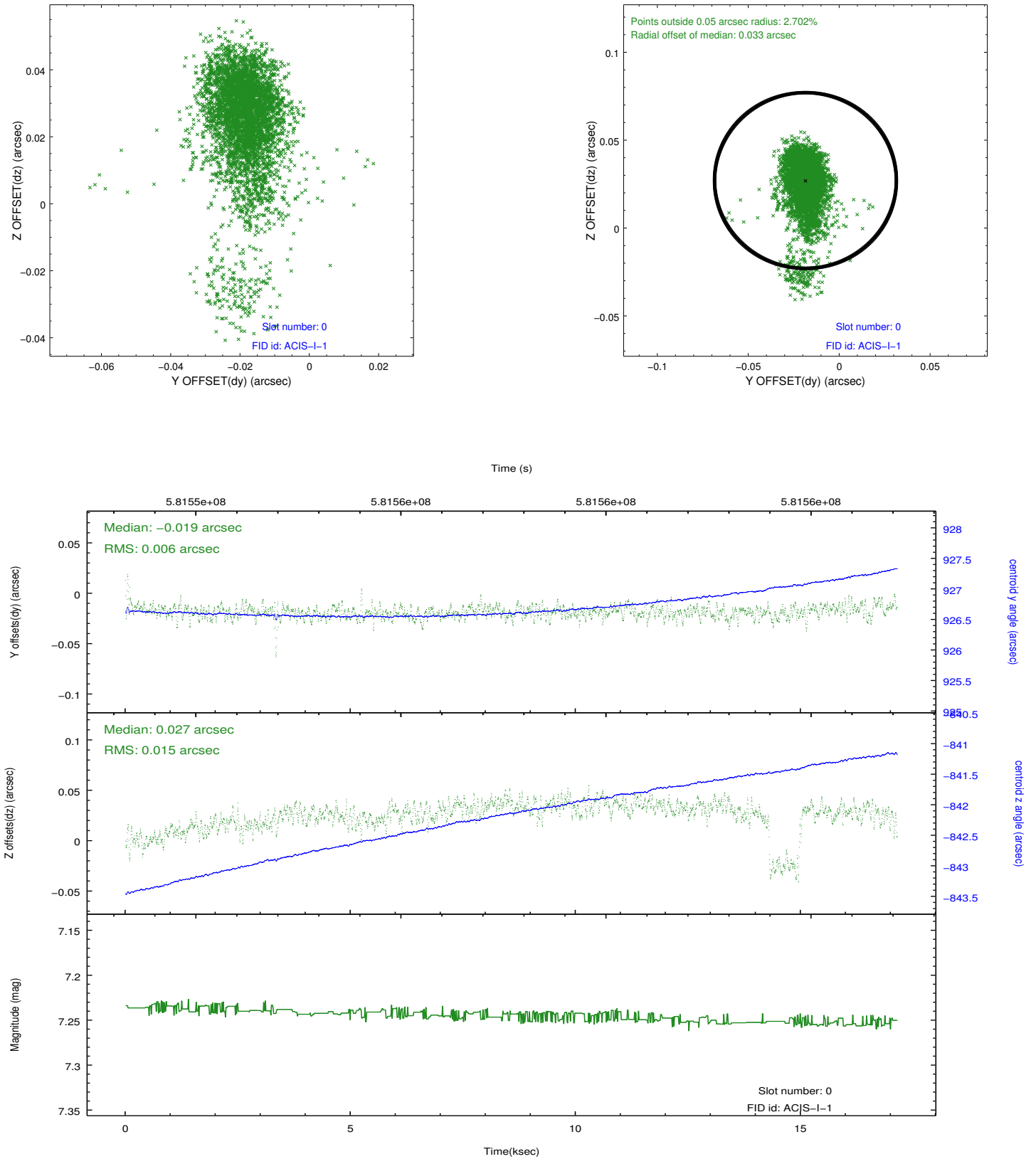


2.4.5 Slot 7

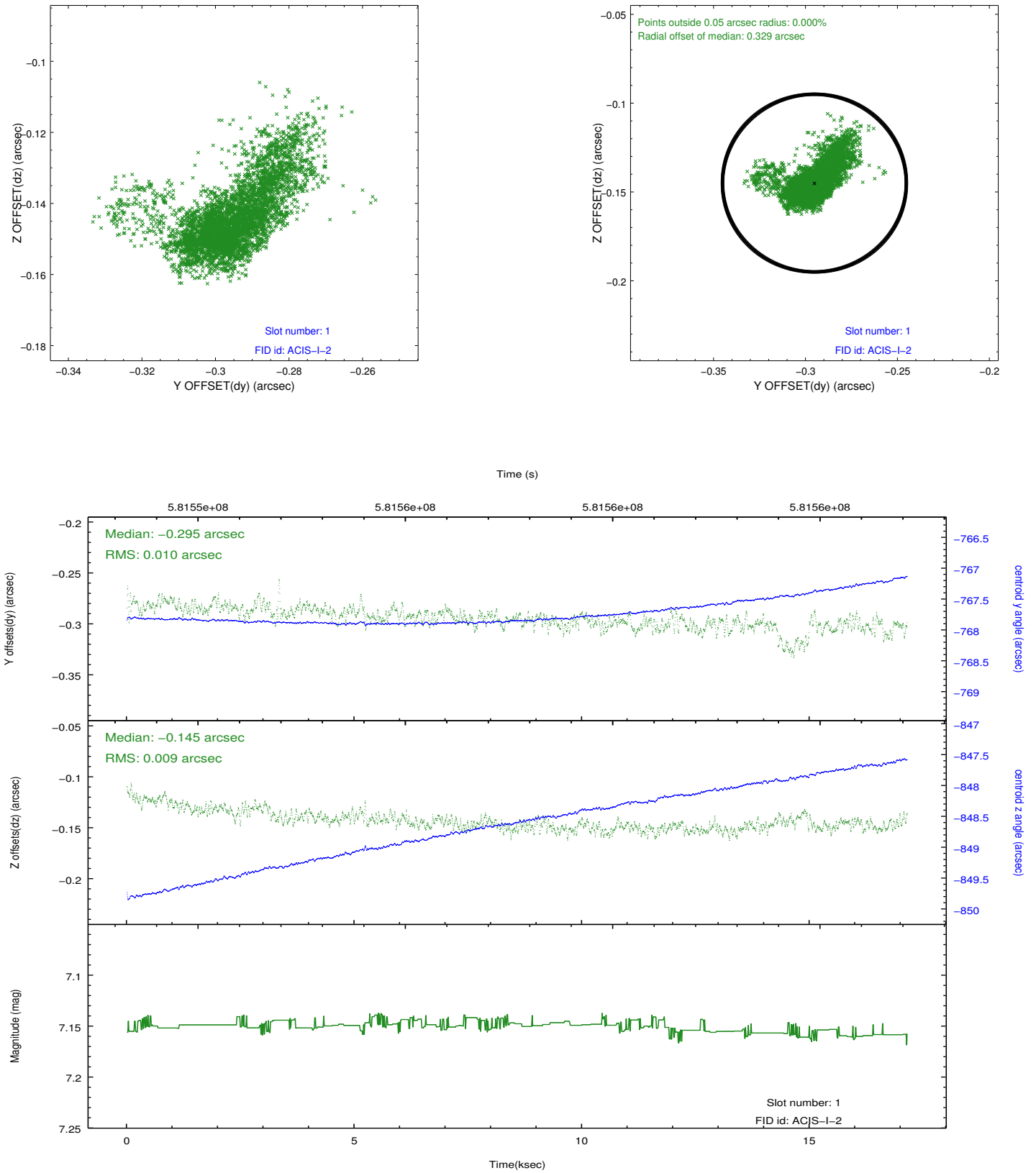


2.5 FID Slots

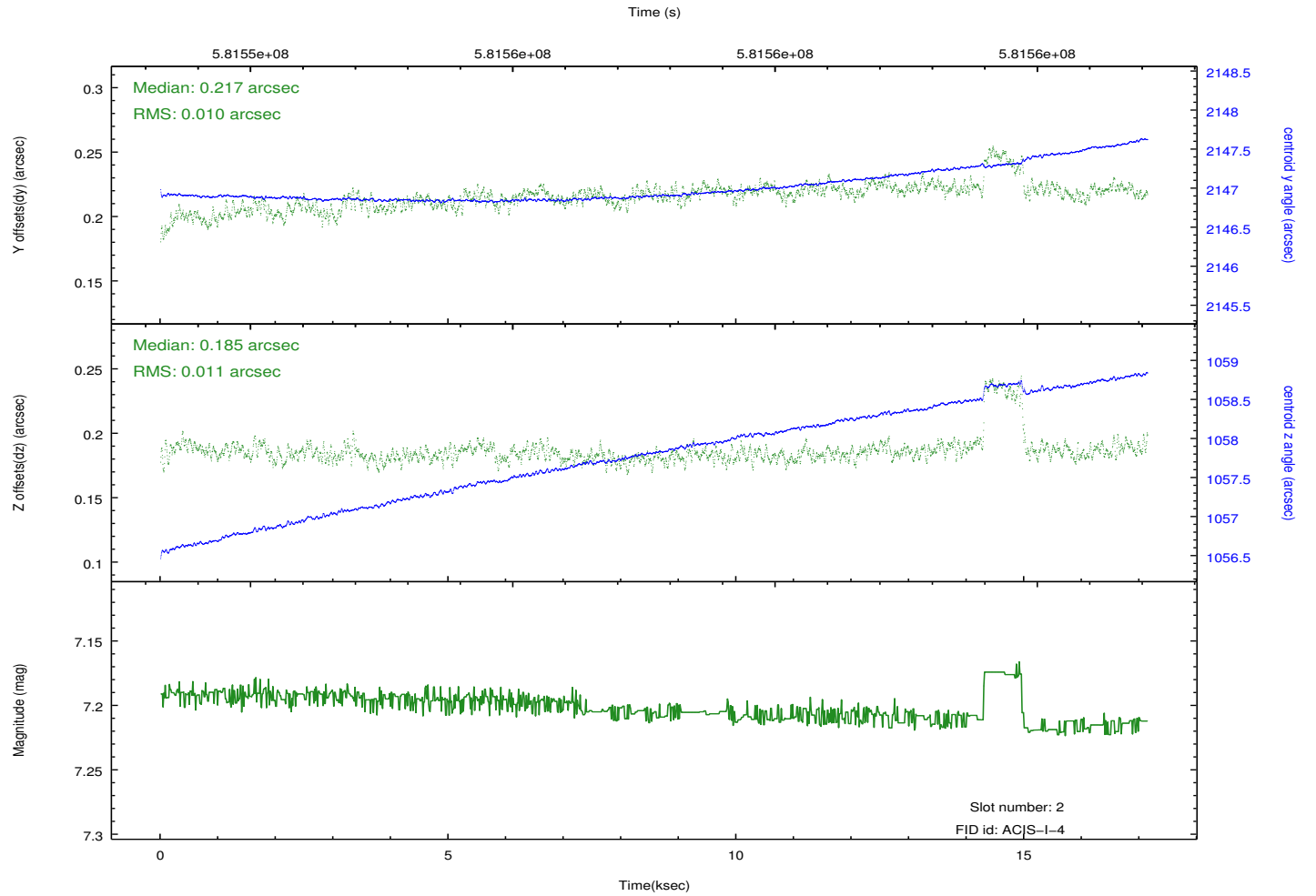
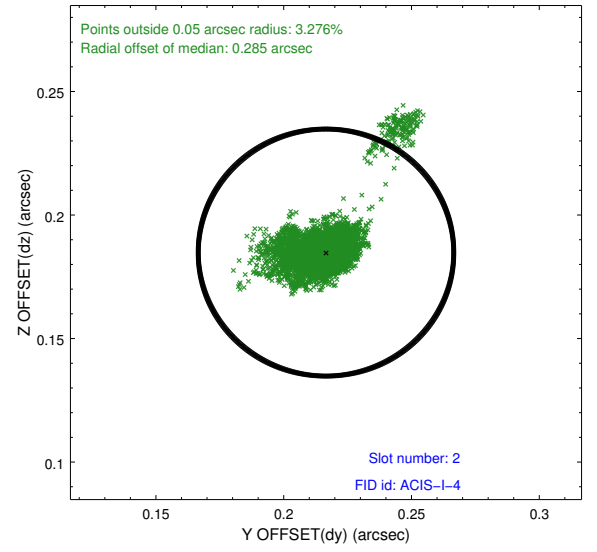
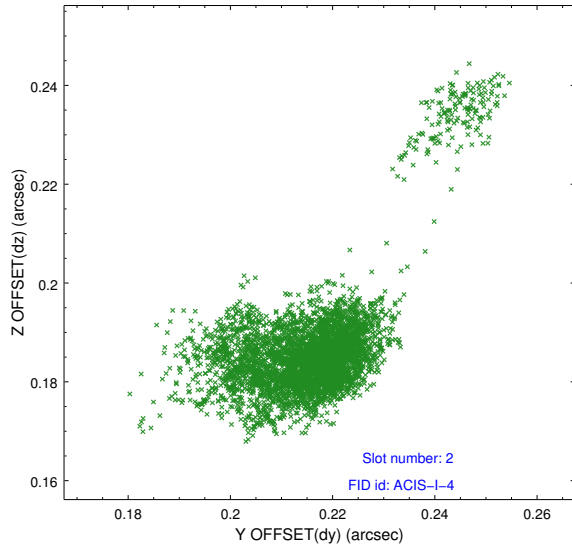
2.5.1 Slot 0



2.5.2 Slot 1



2.5.3 Slot 2



A Summary

A.1 Status

V&V Scientist	Beth Sundheim
V&V Date (YYYY-MM-DD)	2016.06.06
V&V Edition	1
V&V Disposition and Status	OK
V&V Charge Time	16.940266658187

A.2 Comments