

V&V Reference Report

L2 ASCDS Version : 10.2.4

Observation 17414 - L2 Version 1
Chandra X-Ray Center

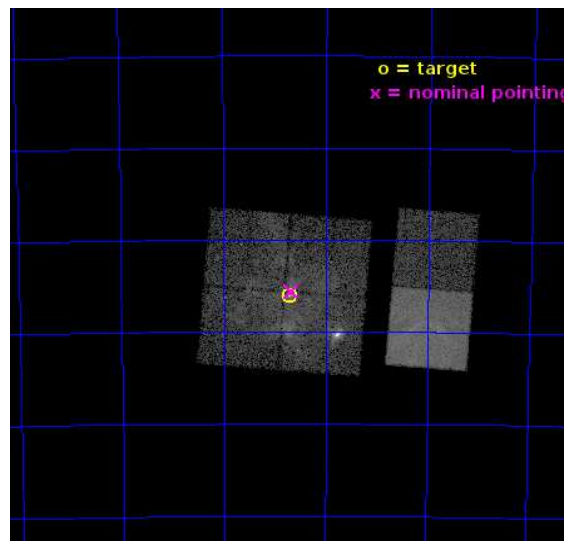
L2 Processing Date : Sep 14 2014

Contents

1	Front	2
2	OBI	3
2.1	OBI	3
2.1.1	Images	3
2.1.2	Bias	3
2.1.3	Parameters	4
2.1.4	Events	4
2.2	Compared Parameters	5
2.3	Aspect	6
2.4	Star Slots	9
2.4.1	Slot 3	9
2.4.2	Slot 4	10
2.4.3	Slot 5	11
2.4.4	Slot 6	12
2.4.5	Slot 7	13
2.5	FID Slots	14
2.5.1	Slot 0	14
2.5.2	Slot 1	15
2.5.3	Slot 2	16
A	Summary	17
A.1	Status	17
A.2	Comments	17

1 Front

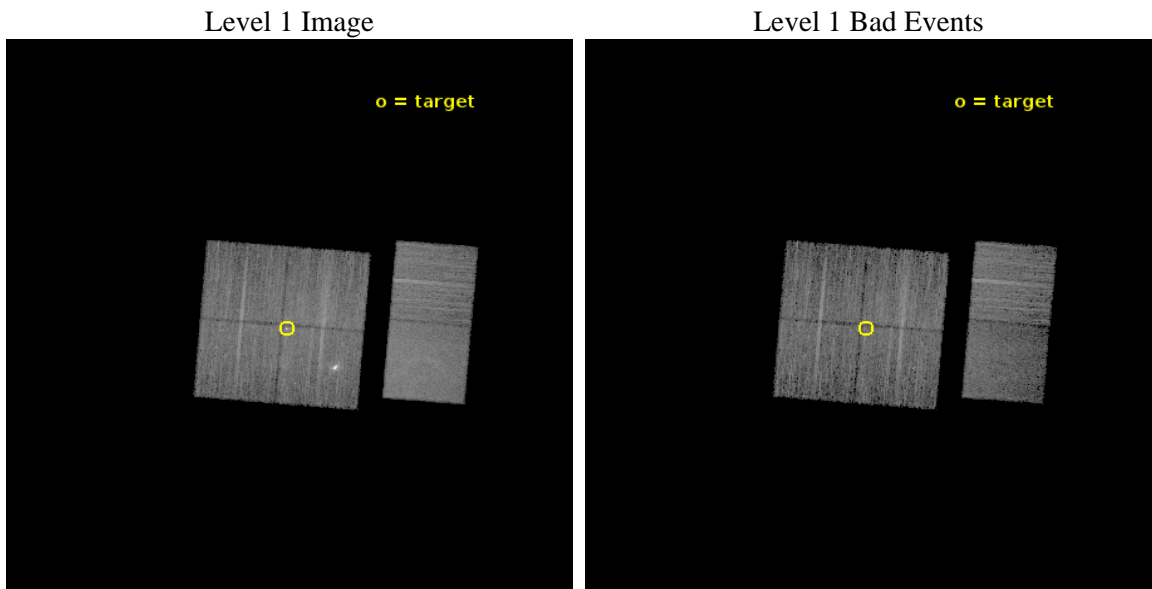
seq_num	901116	Sequence number
obs_id	17414	Observation id
title	The Tarantula -- Revealed by X-rays (T-ReX): A Definitive Chandra Investigation of 30 Doradus	Proposal title
observer	Dr. Leisa Townsley	Principal investigator
object	30 Doradus	Source name
dtcycle	0	
cycle	P	events from which exps? Prim/Second/Both
ra_targ	84.676667	Observer's specified target RA [deg]
dec_targ	-69.100806	Observer's specified target Dec [deg]
ra_nom	84.668028975851	Nominal RA [deg]
dec_nom	-69.093195889596	Nominal Dec [deg]
roll_nom	94.75399288823	Nominal Roll [deg]
revision	1	Processing version of data
ontime	17539.199934721	Sum of GTIs [s]
livetime	17317.108024309	Livetime [s]
ontime0	17539.199934721	Sum of GTIs [s]
ontime1	17539.199934721	Sum of GTIs [s]
ontime2	17539.199934721	Sum of GTIs [s]
ontime3	17539.199934721	Sum of GTIs [s]
ontime6	17539.199934721	Sum of GTIs [s]
ontime7	17539.199934721	Sum of GTIs [s]
l2events	113867	Number of level 2 events



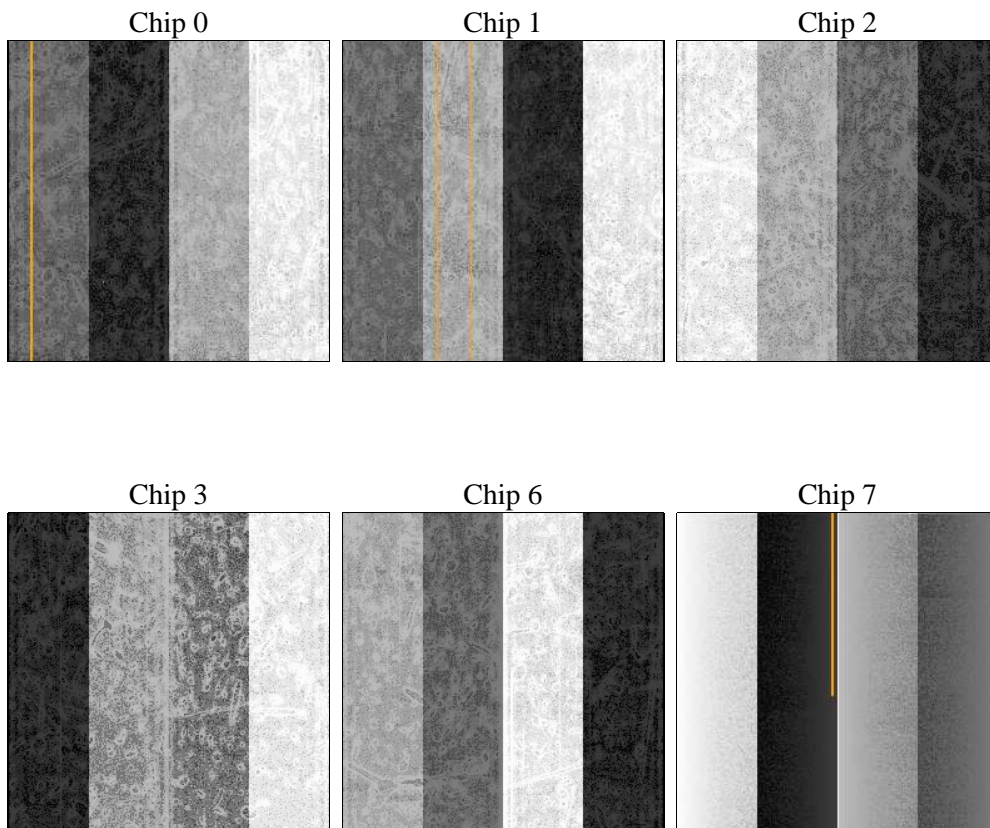
2 OBI

2.1 OBI

2.1.1 Images



2.1.2 Bias



2.1.3 Parameters

obi_num	2	Obi number	sched_exp_time	17570.000000	[s] Scheduled observation exposure time
ascdsver	10.2.4	Processing system revision	ontime	17539.199934721	Sum of GTIs [s]
caldsver	4.6.3	 	ontime0	17539.199934721	Sum of GTIs [s]
date	2014-09-14T17:56:46	Date and time of file creation	ontime1	17539.199934721	Sum of GTIs [s]
revision	1	Processing version of data	ontime2	17539.199934721	Sum of GTIs [s]
			ontime3	17539.199934721	Sum of GTIs [s]
			ontime6	17539.199934721	Sum of GTIs [s]
			ontime7	17539.199934721	Sum of GTIs [s]
			l1events	475335	Number of level 1 events

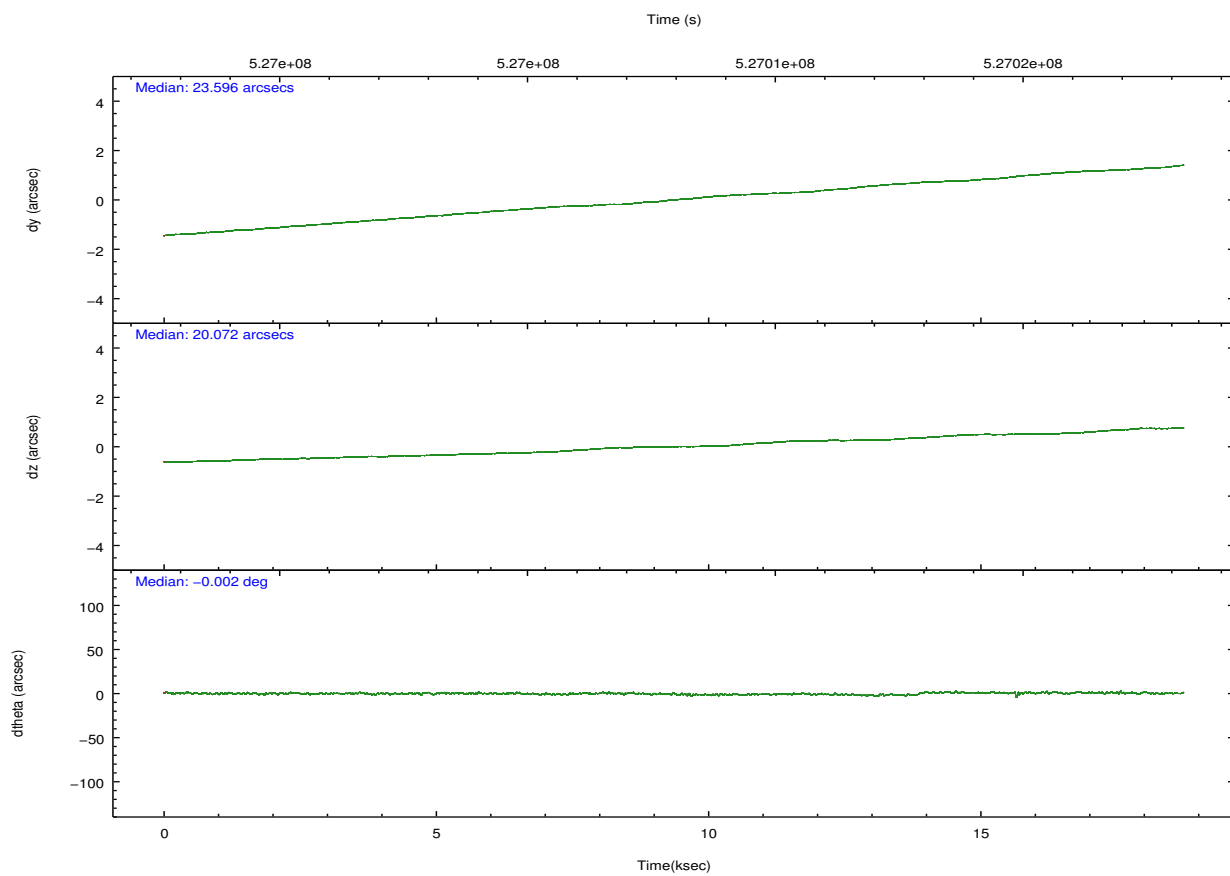
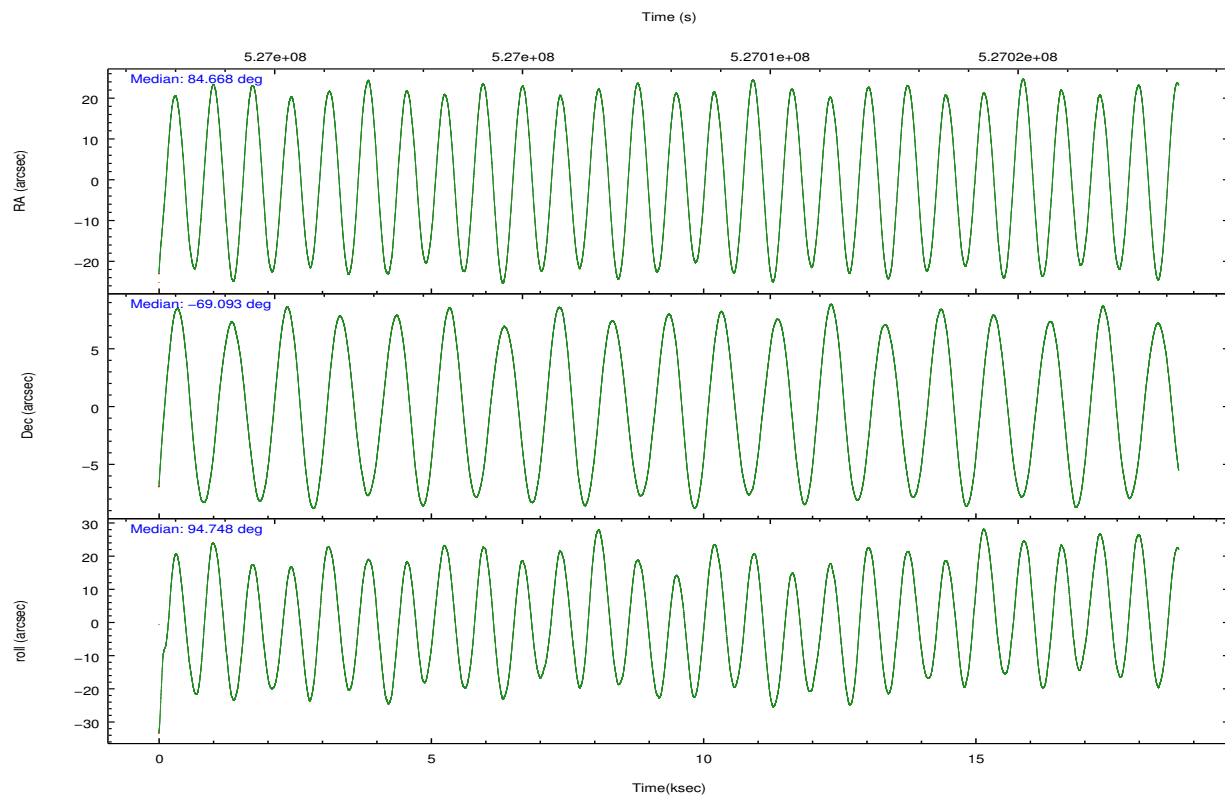
2.1.4 Events

	ccd 0	ccd 1	ccd 2	ccd 3	ccd 6	ccd 7		ccd 0	ccd 1	ccd 2	ccd 3	ccd 6	ccd 7
level 1 events	68168	69575	81959	85960	77723	91950	grade 0 events	6598	6930	8308	18357	4547	5869
rejected events	55467	56341	67561	59333	67124	45047		9%	9%	10%	21%	5%	6%
rejected %	81%	80%	82%	69%	86%	48%	grade 1 events	47	41	59	152	58	134
								0%	0%	0%	0%	0%	0%
							grade 2 events	2599	2503	2571	3544	2257	10546
								3%	3%	3%	4%	2%	11%
							grade 3 events	932	957	915	1406	878	4252
								1%	1%	1%	1%	1%	4%
							grade 4 events	899	933	972	1378	927	4223
								1%	1%	1%	1%	1%	4%
							grade 5 events	2837	3045	2723	3312	3180	8890
								4%	4%	3%	3%	4%	9%
							grade 6 events	1682	1918	1636	1955	1994	22031
								2%	2%	1%	2%	2%	23%
							grade 7 events	52574	53248	64775	55856	63882	36005
								77%	76%	79%	64%	82%	39%

2.2 Compared Parameters

Parameter	Planned	Actual	Parameter	Planned	Actual
Instrument	ACIS	ACIS	Obspar format version number	7	7
Detector	ACIS-012367	ACIS-012367	Obspar file type	PREDICTED	ACTUAL
Grating	NONE	NONE	Obspar update status	NONE	UPDATED
Data mode	VFAINT	VFAINT	CCD I0 on	Y	Y
Observation mode	POINTING	POINTING	CCD I1 on	Y	Y
[deg] Pointing RA	84.712377	84.66802897585123	CCD I2 on	Y	Y
[deg] Pointing Dec	-69.115832	-69.09319588959642	CCD I3 on	Y	Y
[deg] Pointing Roll	94.586740	94.75399288822967	CCD S0 on	N	N
[mm] SIM focus pos	-0.782348	-0.7809083437167272	CCD S1 on	N	N
[mm] SIM defocus	0	0.001439871863259334	CCD S2 on	O1	Y
[mm] SIM translation stage pos	-233.592463	-233.5874344608287	CCD S3 on	O2	Y
[mm] SIM translation stage offset	0	-0.005018542100998502	CCD S4 on	N	N
[s] Observation start time (MET)	526999747.184000	526998299.66317	CCD S5 on	N	N
Observation start date	2014-09-13T12:48:00	2014-09-13T12:24:59	Number of optional ACIS chips dropped	0	0
[s] Observation end time (MET)	527017317.184000	527018724.3268	On-chip summing requested	N	N
Observation end date	2014-09-13T17:40:50	2014-09-13T18:05:24	Subarray requested	NONE	NONE
Read mode	TIMED	TIMED	Alternating exposures requested	N	N
			[s] Primary exposure time	0.000000	3.2

2.3 Aspect

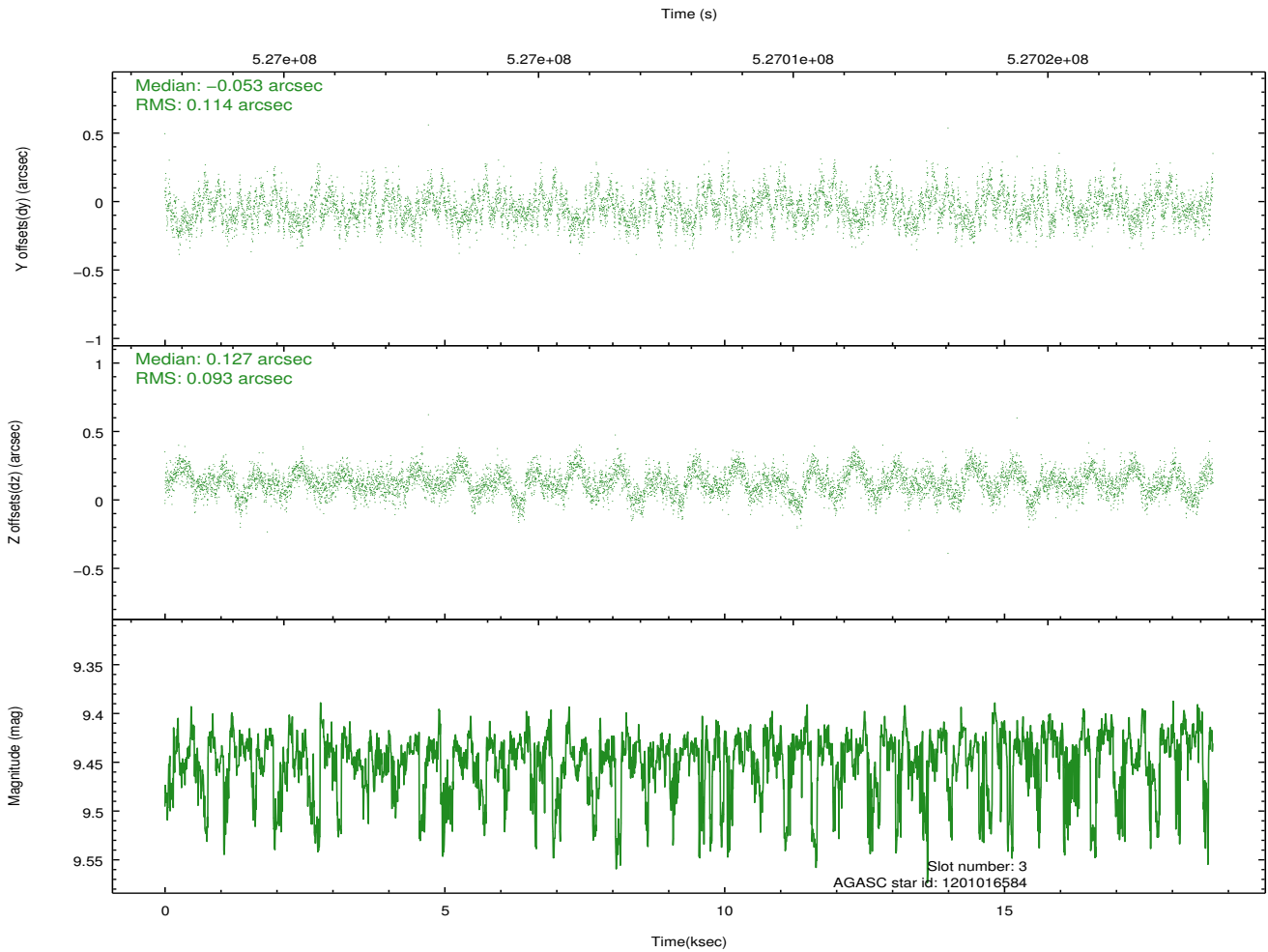
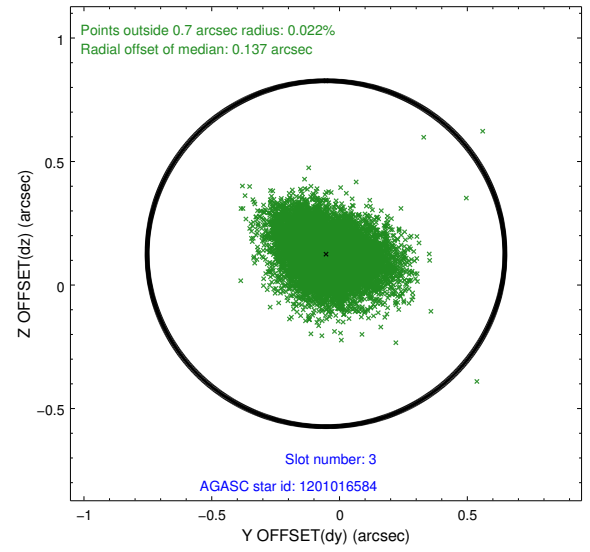
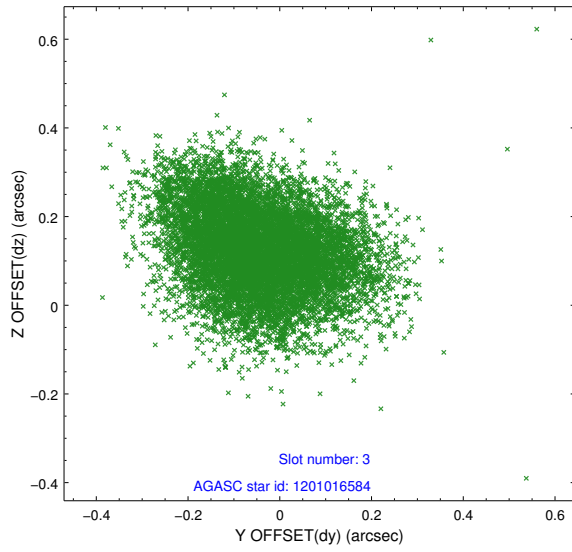


Slot Statistics

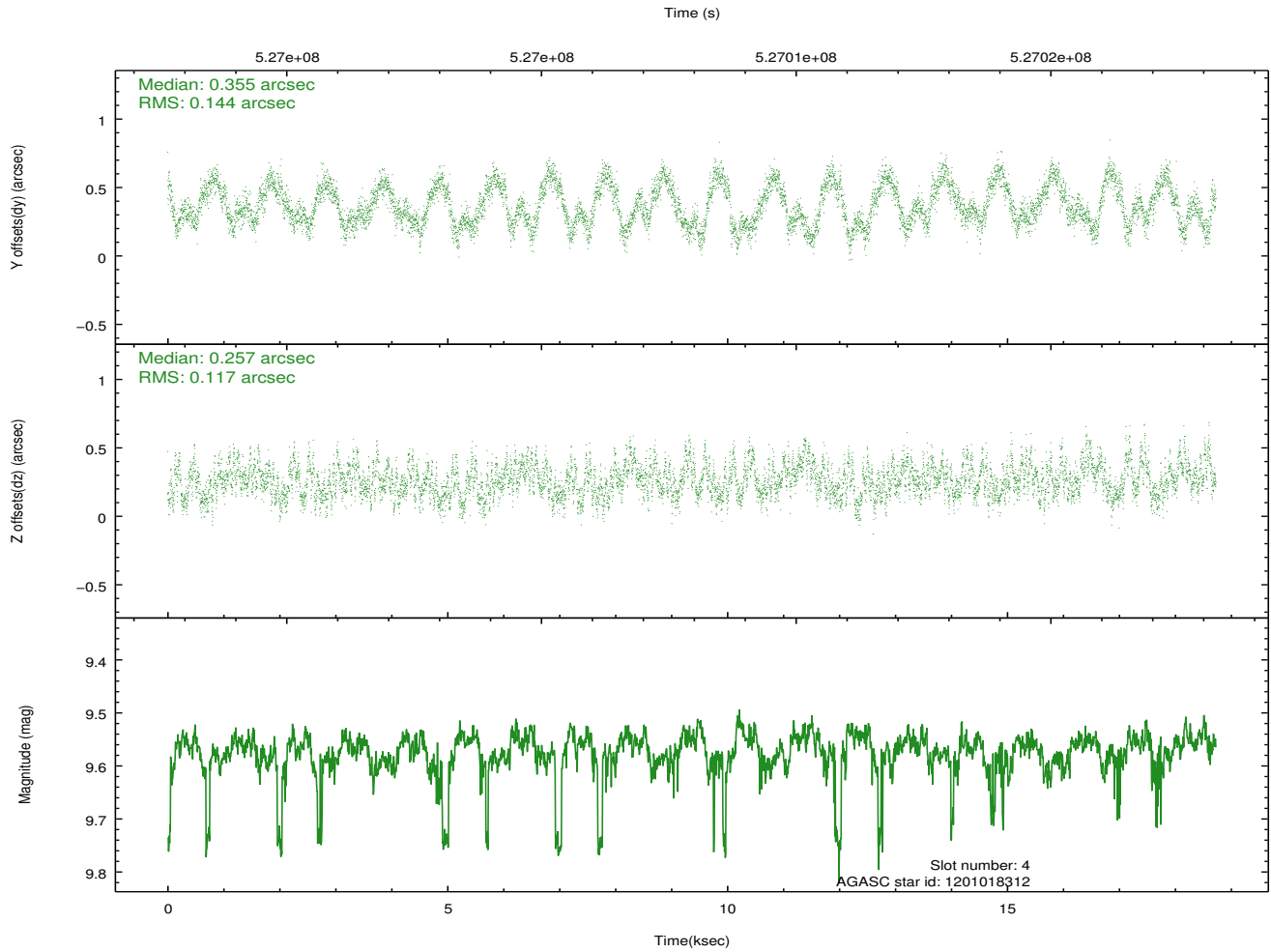
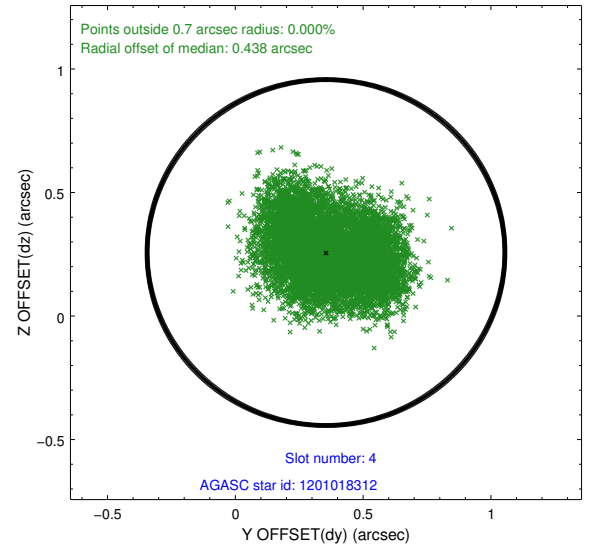
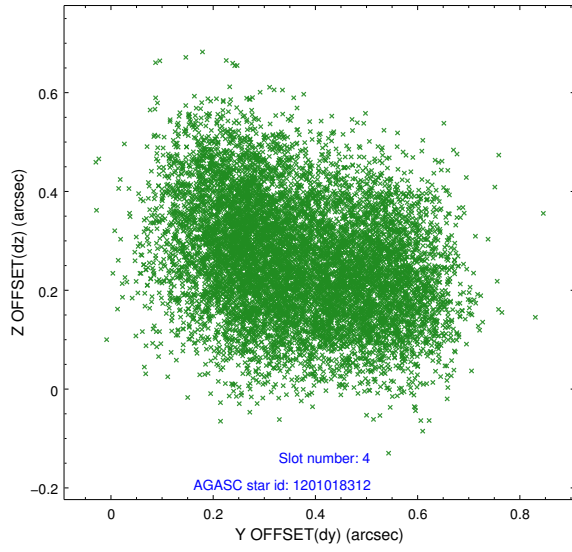
slot	status	id	mag	n_pts	med_dy	med_dz	dr1	dr2	ra	dec	mean_y	mean_z
0	FID	ACIS-I-1	6.99	4568	-0.114	-0.022	0.017	0.034	0.000000	0.000000	915.52	-843.84
1	FID	ACIS-I-4	6.93	4567	0.107	0.102	0.025	0.033	0.000000	0.000000	2135.90	1055.98
2	FID	ACIS-I-6	6.99	4568	-0.091	-0.013	0.021	0.030	0.000000	0.000000	381.71	1698.29
3	GUIDE	1201016584	9.44	9130	-0.053	0.127	0.156	0.252	85.677603	-68.415933	2400.02	-1474.37
4	GUIDE	1201018312	9.57	9123	0.355	0.257	0.204	0.304	86.298231	-69.115627	-186.85	-2026.16
5	GUIDE	1201018384	9.07	9133	-0.042	-0.034	0.128	0.204	85.801362	-68.593260	1748.92	-1576.29
6	GUIDE	1200884248	9.40	9128	-0.106	-0.380	0.256	0.346	83.880915	-68.565170	2056.92	931.82
7	GUIDE	1201020040	8.59	9131	-0.148	0.044	0.087	0.137	85.379163	-68.879396	775.31	-929.48

2.4 Star Slots

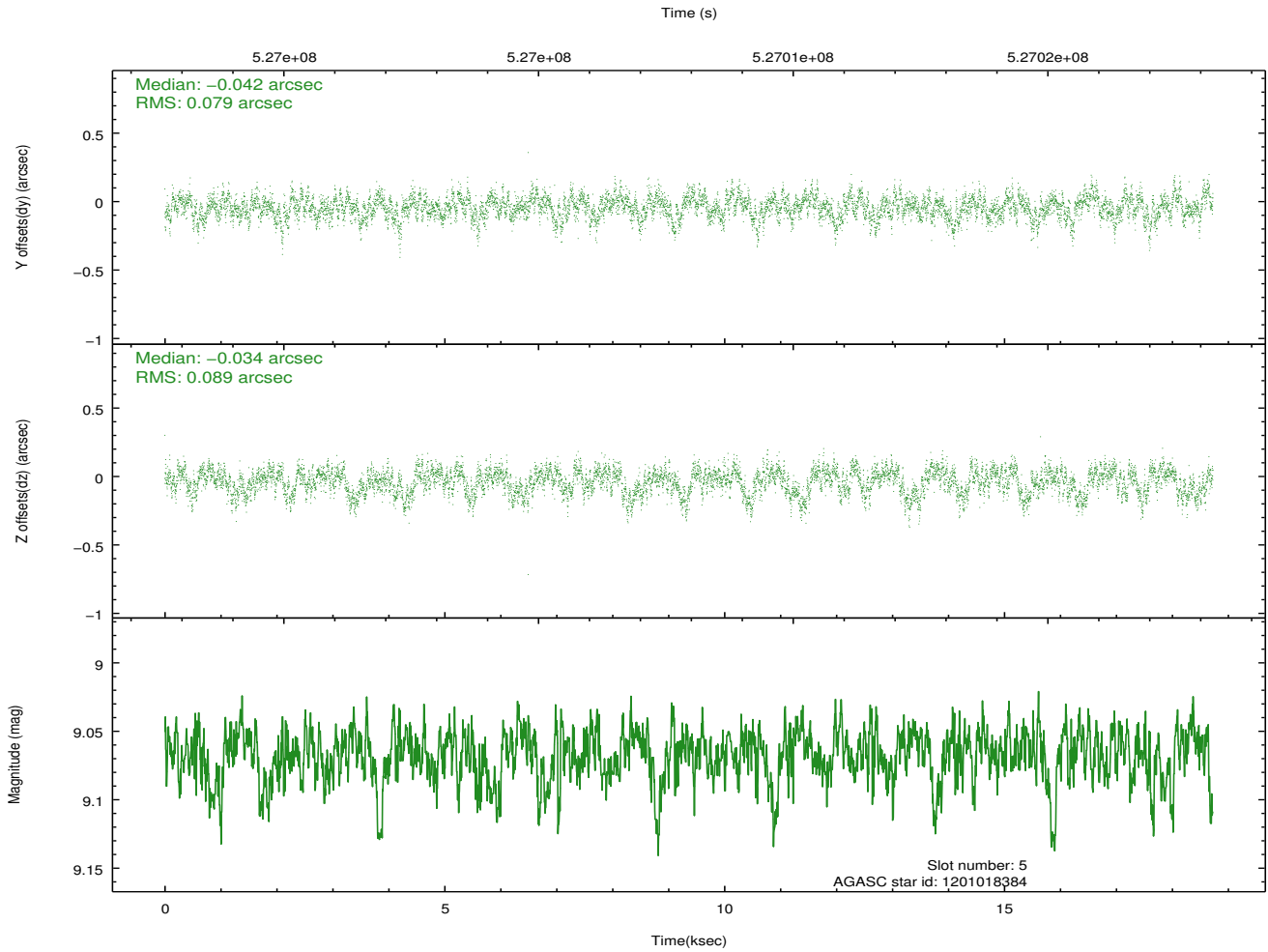
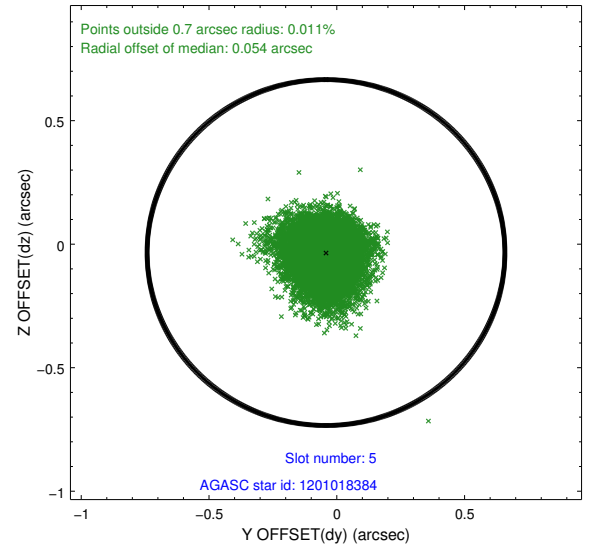
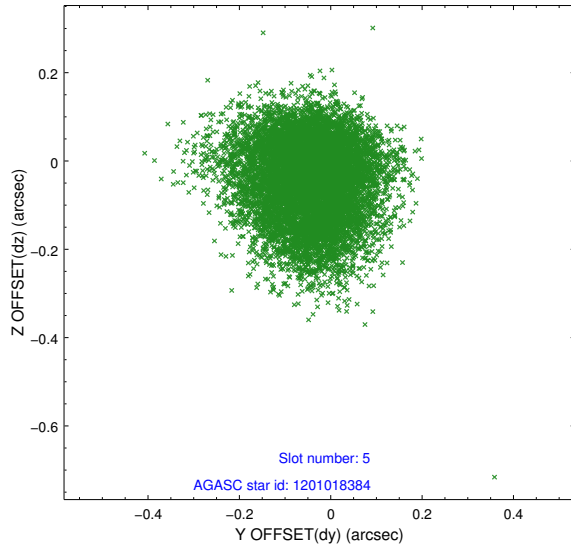
2.4.1 Slot 3



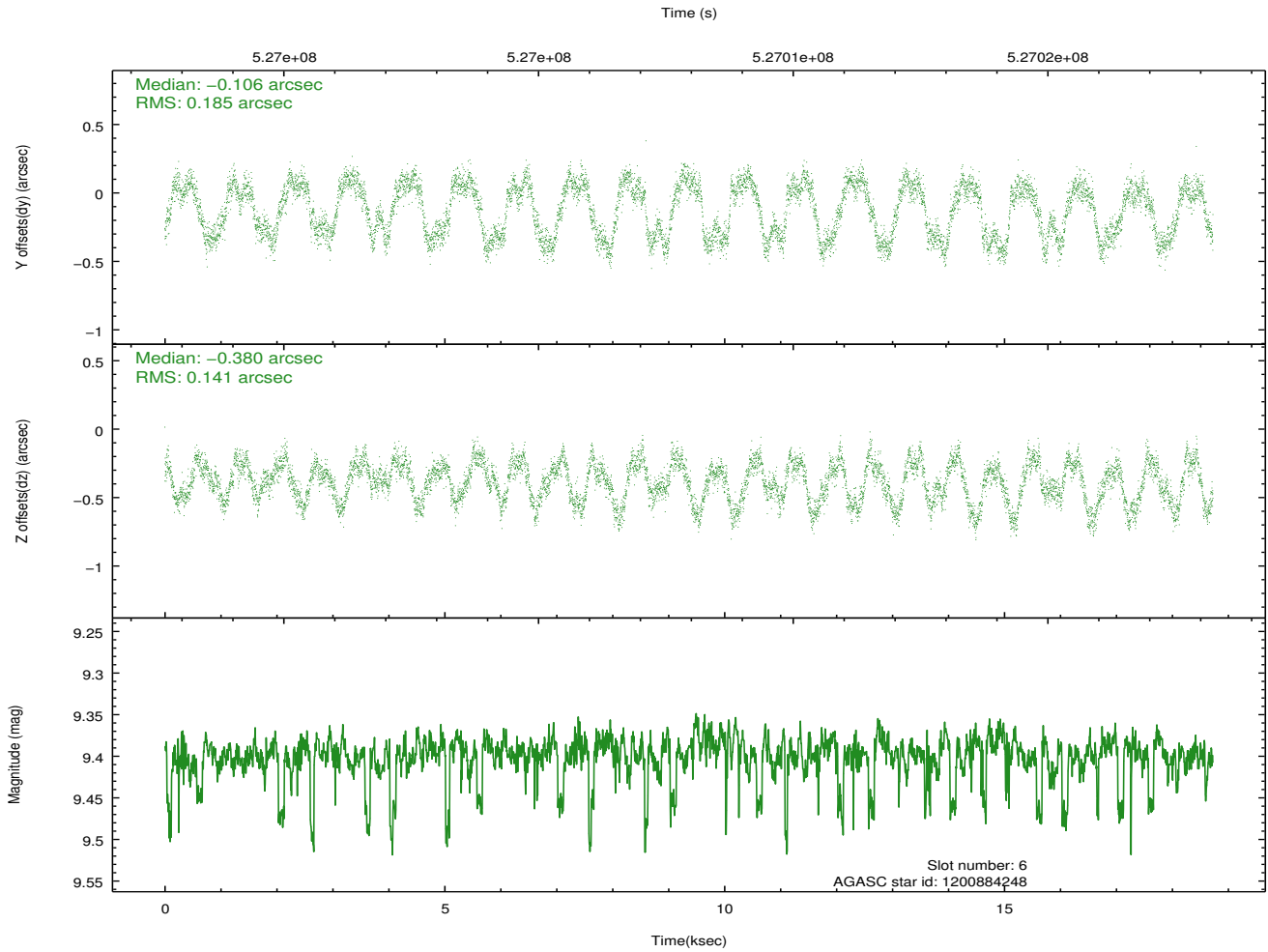
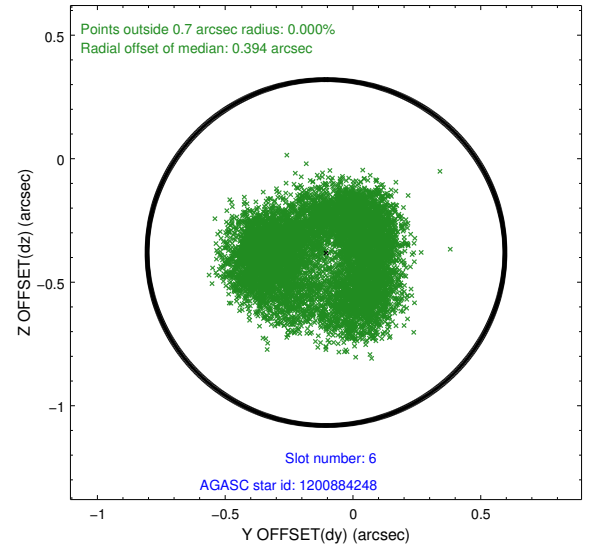
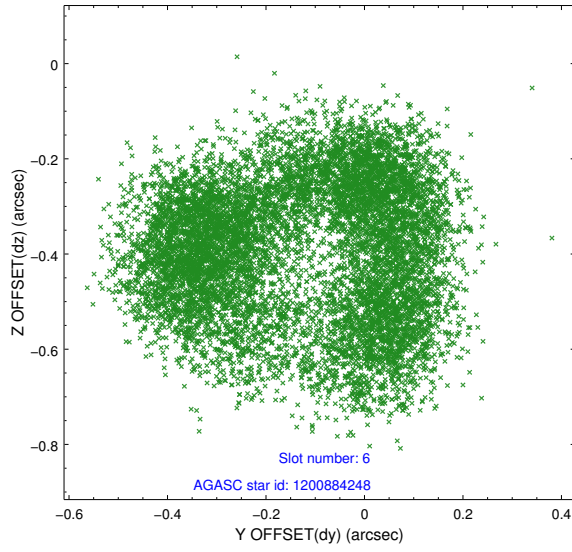
2.4.2 Slot 4



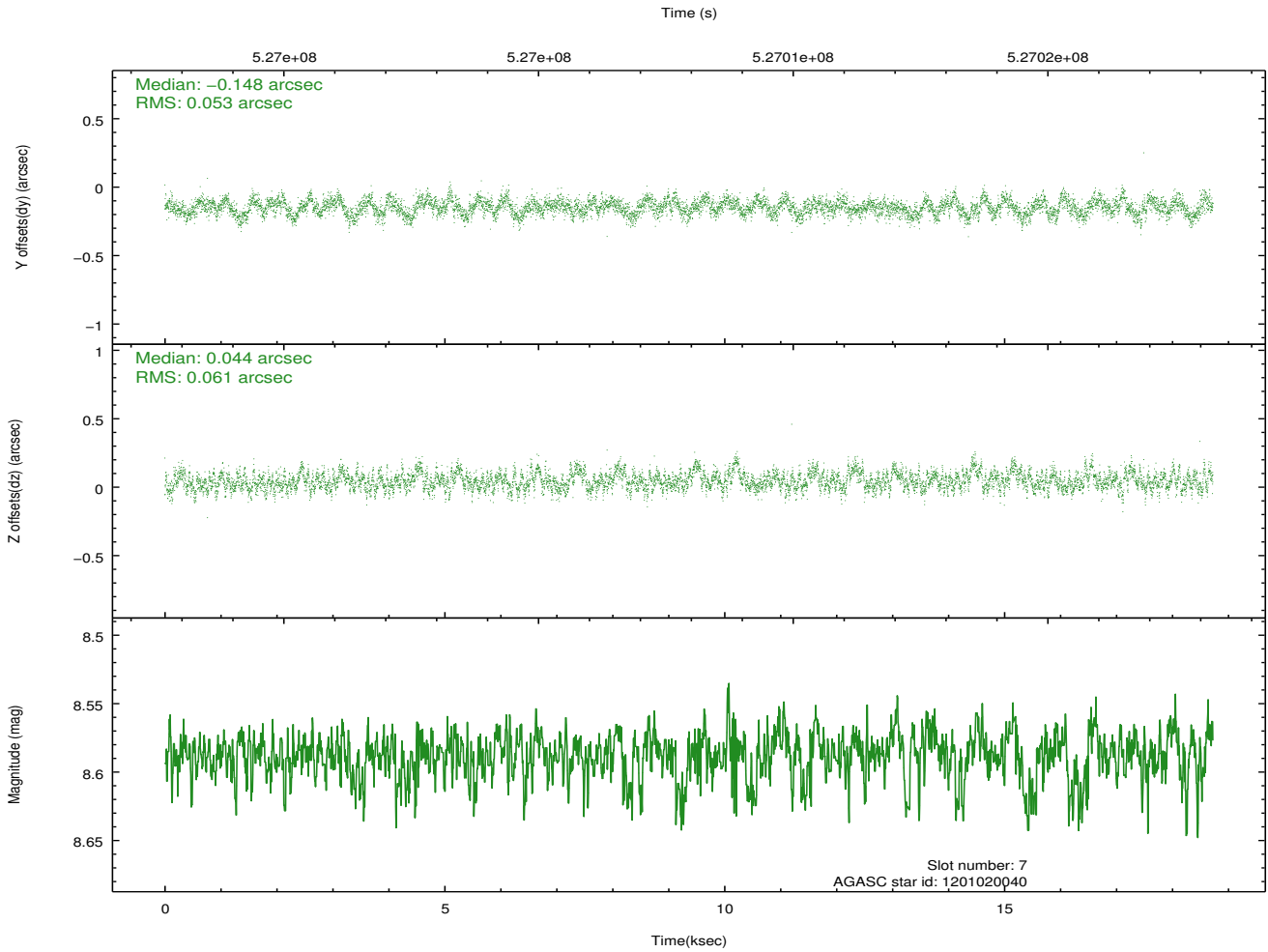
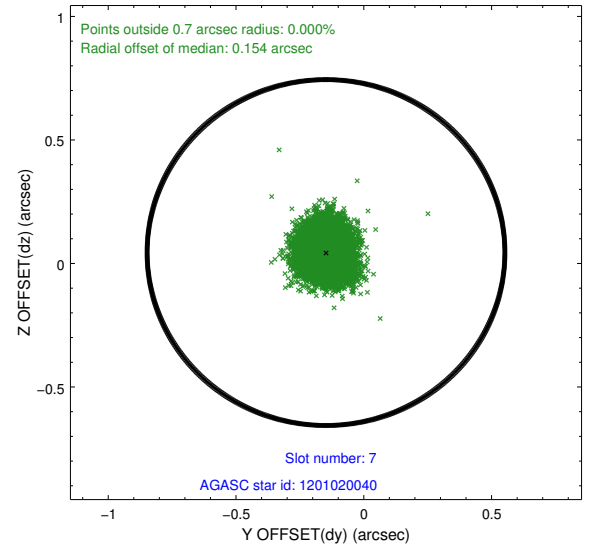
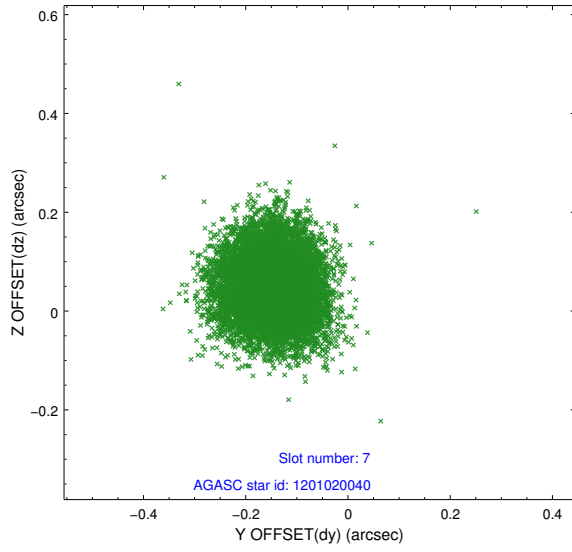
2.4.3 Slot 5



2.4.4 Slot 6

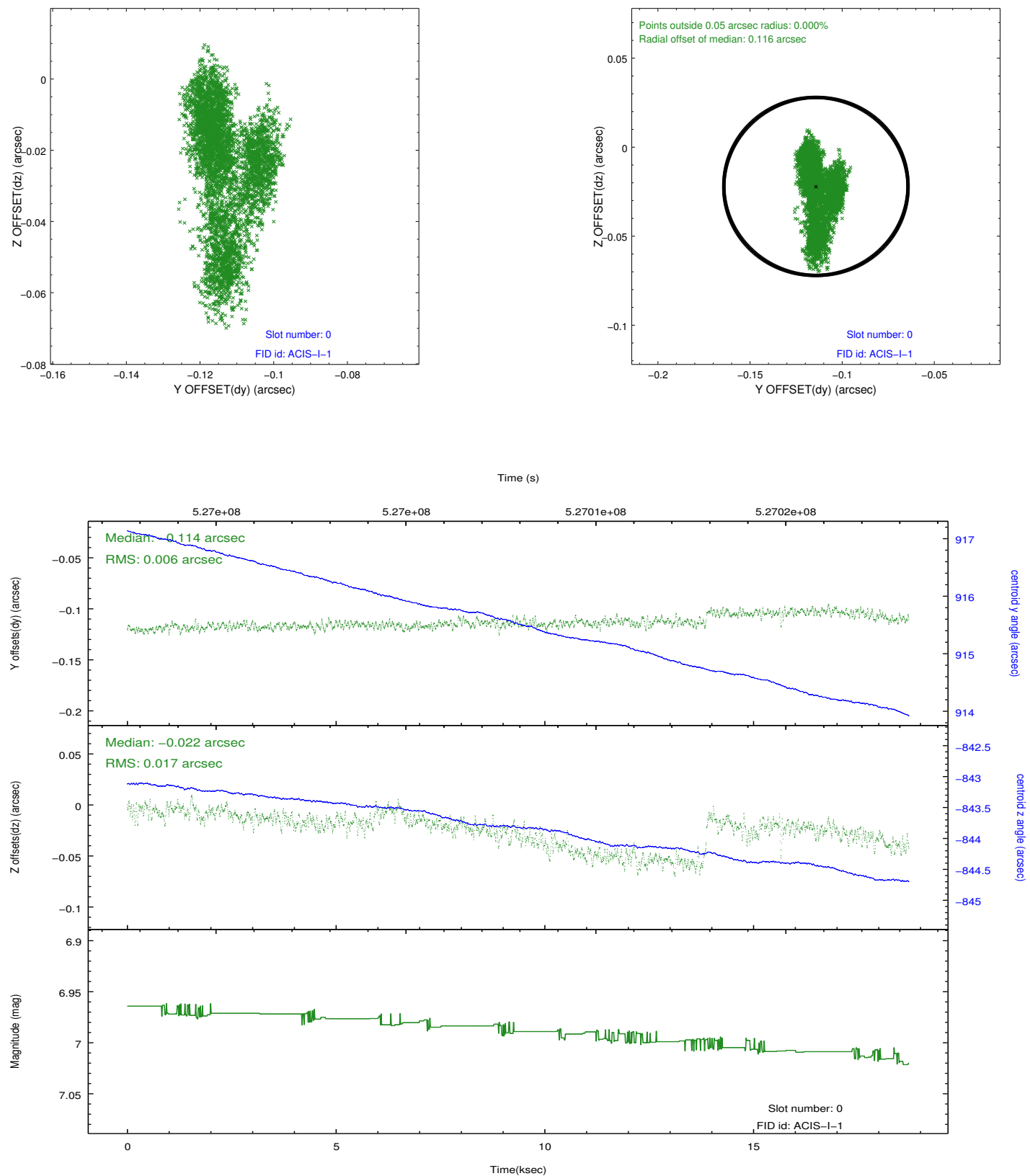


2.4.5 Slot 7

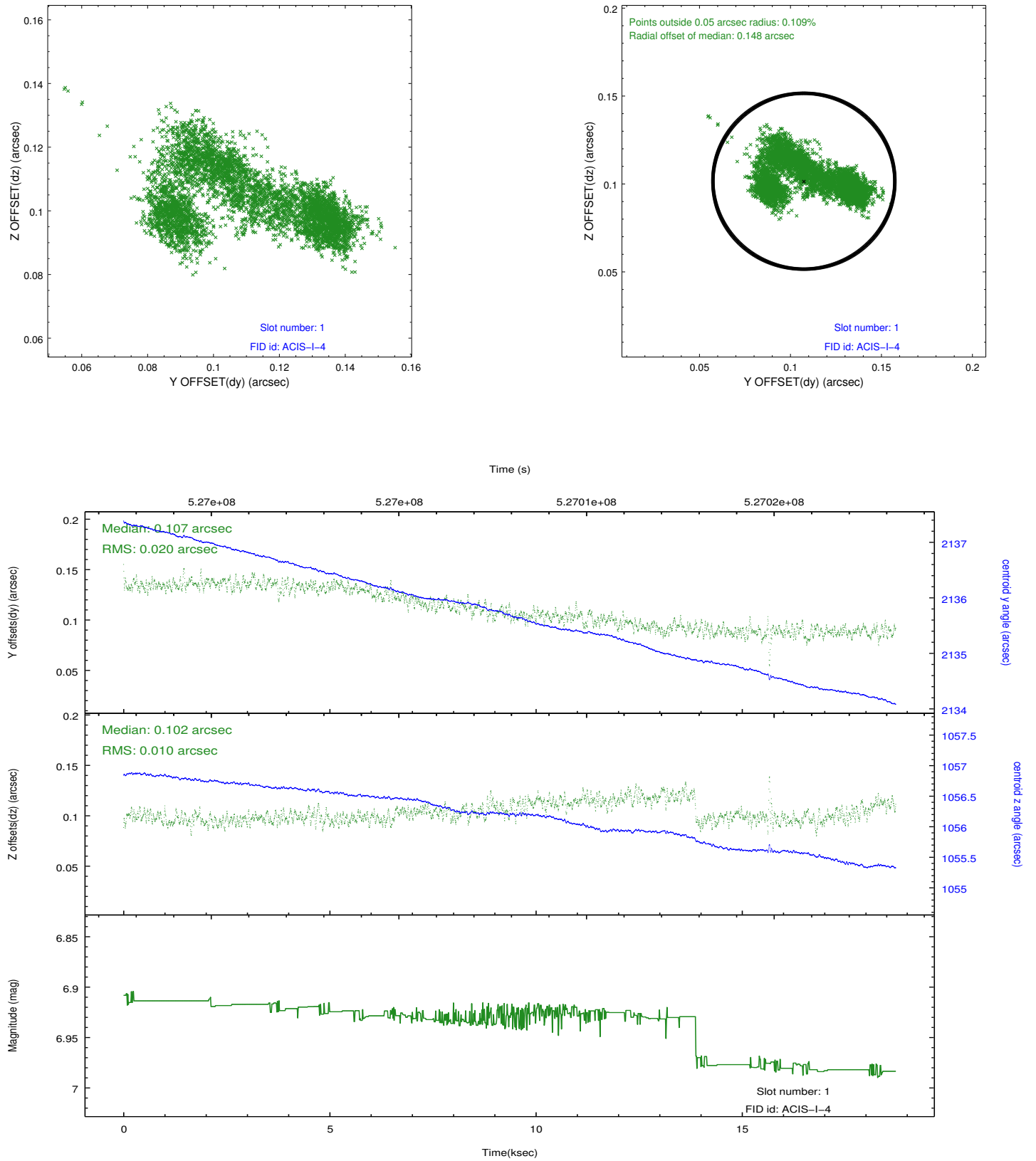


2.5 FID Slots

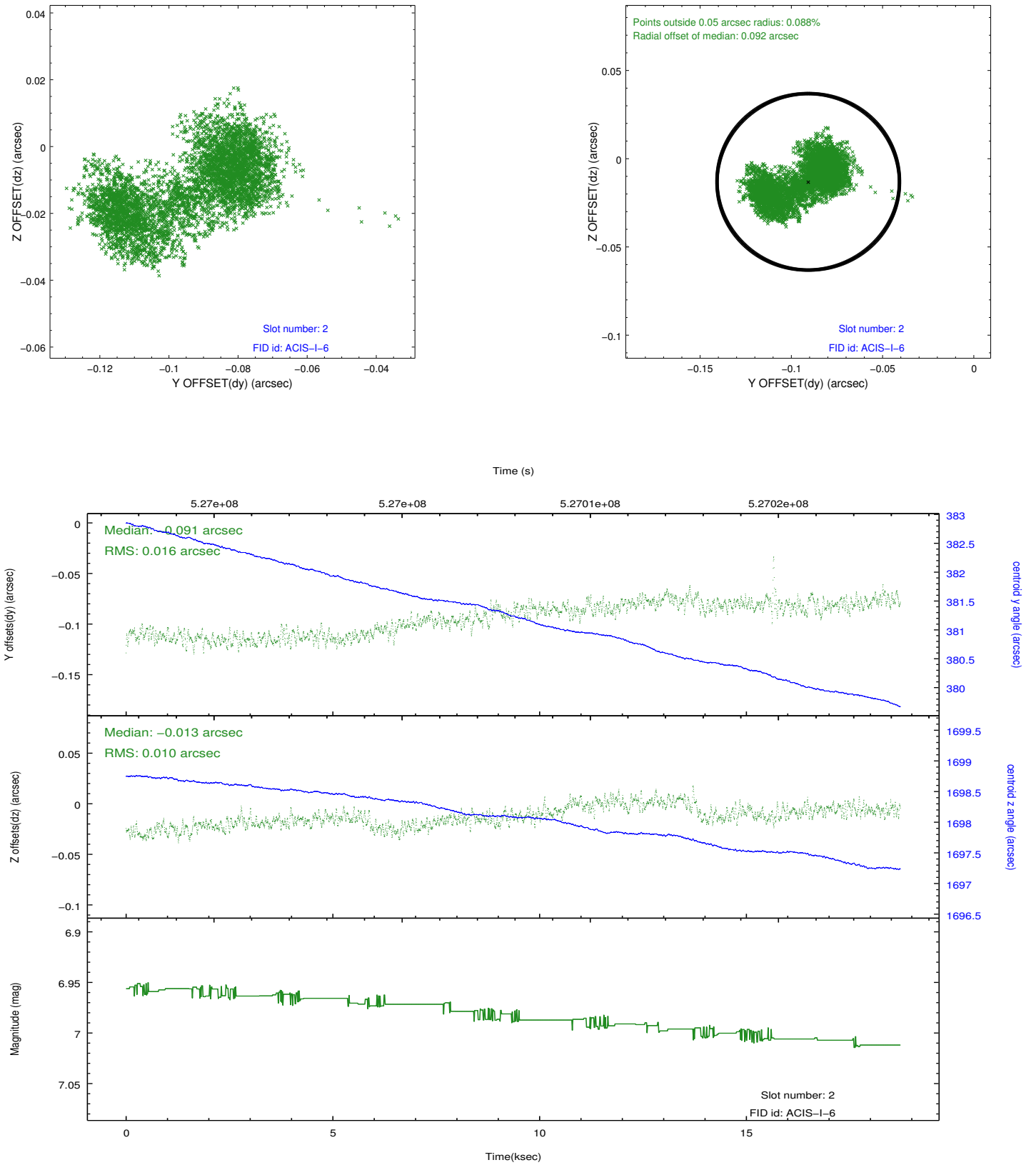
2.5.1 Slot 0



2.5.2 Slot 1



2.5.3 Slot 2



A Summary

A.1 Status

V&V Scientist	Jen Lauer
V&V Date (YYYY-MM-DD)	2014.09.15
V&V Edition	1
V&V Disposition and Status	OK
V&V Charge Time	17.539199934721

A.2 Comments