

V&V Reference Report

L2 ASCDS Version : 10.2.4

Observation 16642 - L2 Version 1
Chandra X-Ray Center

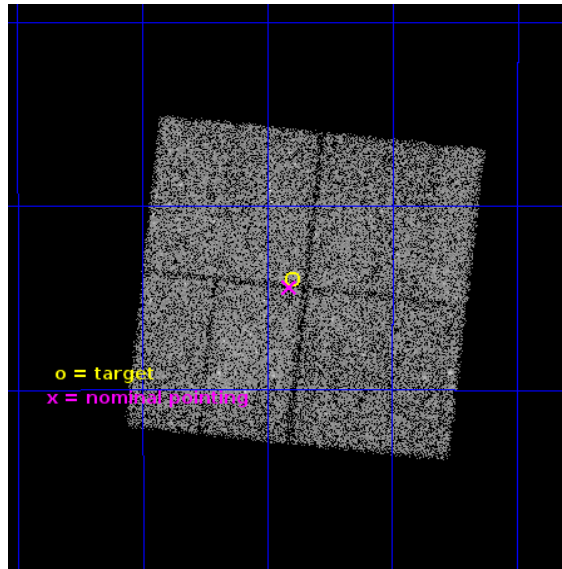
L2 Processing Date : Aug 2 2014

Contents

1	Front	2
2	OBI	3
2.1	OBI	3
2.1.1	Images	3
2.1.2	Bias	3
2.1.3	Parameters	4
2.1.4	Events	4
2.2	Compared Parameters	5
2.3	Aspect	6
2.4	Star Slots	9
2.4.1	Slot 3	9
2.4.2	Slot 4	10
2.4.3	Slot 5	11
2.4.4	Slot 6	12
2.4.5	Slot 7	13
2.5	FID Slots	14
2.5.1	Slot 0	14
2.5.2	Slot 1	15
2.5.3	Slot 2	16
A	Summary	17
A.1	Status	17
A.2	Comments	17

1 Front

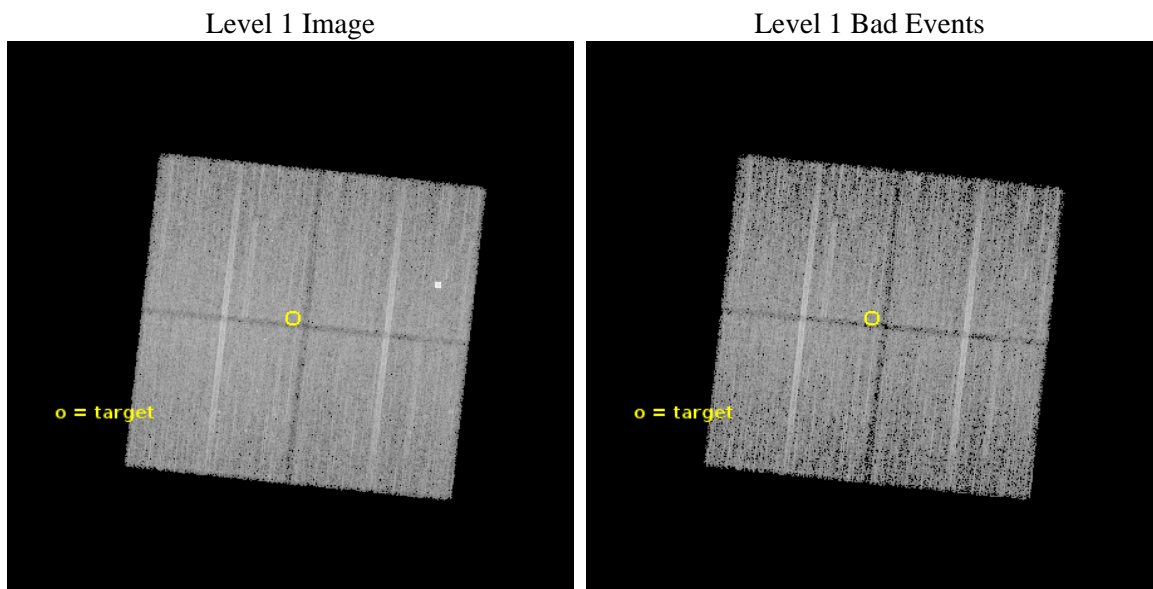
seq_num	901114	Sequence number
obs_id	16642	Observation id
title	The Sgr C complex: a cosmic ray dominated region?	Proposal title
observer	Dr Simona Soldi	Principal investigator
object	Sgr C	Source name
dtcycle	0	
cycle	P	events from which exps? Prim/Second/Both
ra_targ	266.099167	Observer's specified target RA [deg]
dec_targ	-29.399694	Observer's specified target Dec [deg]
ra_nom	266.1029369605	Nominal RA [deg]
dec_nom	-29.407198738639	Nominal Dec [deg]
roll_nom	276.21053864279	Nominal Roll [deg]
revision	1	Processing version of data
ontime	30206.400232315	Sum of GTIs [s]
livetime	29811.731375652	Livetime [s]
ontime0	30206.400232315	Sum of GTIs [s]
ontime1	30203.25919199	Sum of GTIs [s]
ontime2	30206.400232315	Sum of GTIs [s]
ontime3	30206.400232315	Sum of GTIs [s]
l2events	88904	Number of level 2 events



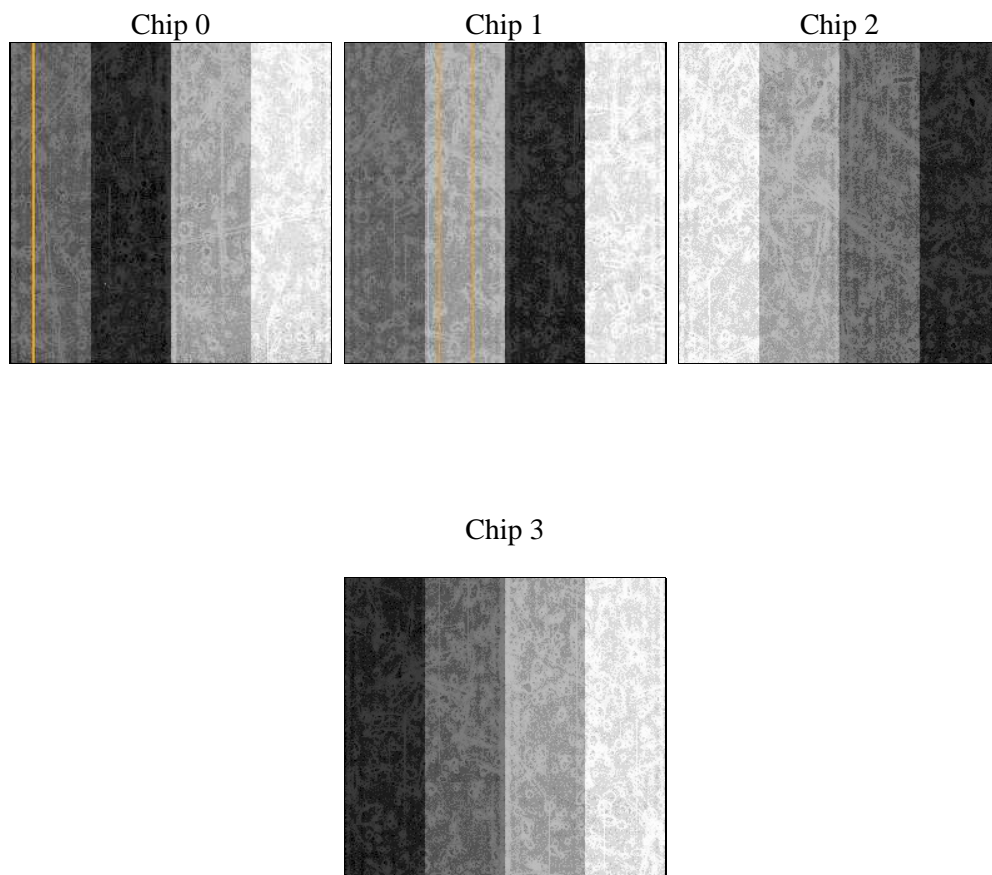
2 OBI

2.1 OBI

2.1.1 Images



2.1.2 Bias



2.1.3 Parameters

obi_num	1	Obi number	sched_exp_time	30118.000000	[s] Scheduled observation exposure time
ascdsver	10.2.4	Processing system revision	ontime	30206.400232315	Sum of GTIs [s]
caldsver	4.6.2	 	ontime0	30206.400232315	Sum of GTIs [s]
date	2014-08-02T03:43:41	Date and time of file creation	ontime1	30203.25919199	Sum of GTIs [s]
revision	1	Processing version of data	ontime2	30206.400232315	Sum of GTIs [s]
			ontime3	30206.400232315	Sum of GTIs [s]
			l1events	595265	Number of level 1 events

2.1.4 Events

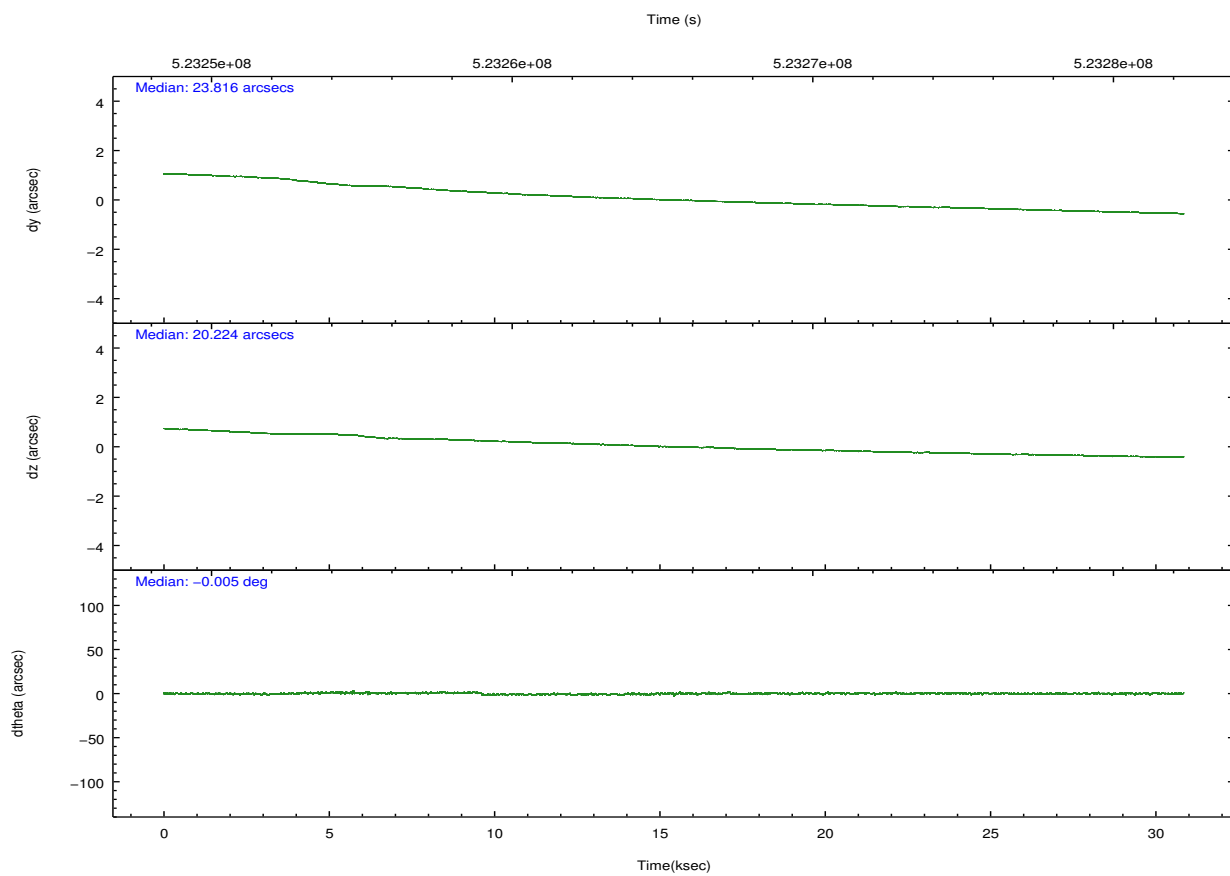
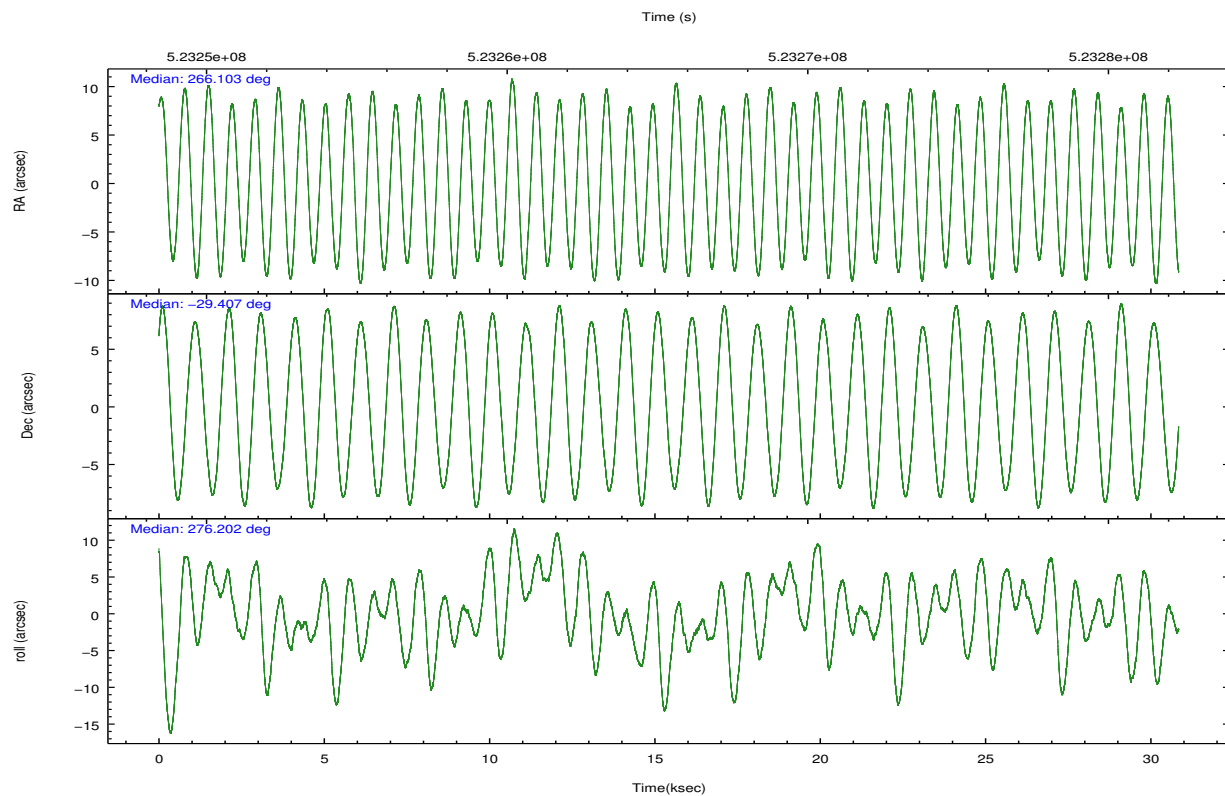
	ccd 0	ccd 1	ccd 2	ccd 3
level 1 events	139589	149163	157258	149255
rejected events	115493	119267	130007	124265
rejected %	82%	79%	82%	83%

	ccd 0	ccd 1	ccd 2	ccd 3
grade 0 events	10463	15031	12748	11129
	7%	10%	8%	7%
grade 1 events	92	111	109	114
	0%	0%	0%	0%
grade 2 events	5324	5710	5787	4945
	3%	3%	3%	3%
grade 3 events	2091	2264	2150	2253
	1%	1%	1%	1%
grade 4 events	1968	2190	2317	2238
	1%	1%	1%	1%
grade 5 events	7213	7696	6799	8050
	5%	5%	4%	5%
grade 6 events	4260	4710	4257	4434
	3%	3%	2%	2%
grade 7 events	108178	111451	123091	116092
	77%	74%	78%	77%

2.2 Compared Parameters

Parameter	Planned	Actual	Parameter	Planned	Actual
Instrument	ACIS	ACIS	Obspar format version number	7	7
Detector	ACIS-0123	ACIS-0123	Obspar file type	PREDICTED	ACTUAL
Grating	NONE	NONE	Obspar update status	NONE	UPDATED
Data mode	FAINT	FAINT	Number of optional ACIS chips dropped	0	0
Observation mode	POINTING	POINTING	On-chip summing requested	N	N
[deg] Pointing RA	266.084120	266.1029369604978	Subarray requested	NONE	NONE
[deg] Pointing Dec	-29.384980	-29.40719873863877	Alternating exposures requested	N	N
[deg] Pointing Roll	275.992618	276.2105386427946	[s] Primary exposure time	0.000000	3.1
[mm] SIM focus pos	-0.782348	-0.7809083437167272			
[mm] SIM defocus	0	0.001439871863259334			
[mm] SIM translation stage pos	-233.592463	-233.5874344608287			
[mm] SIM translation stage offset	0	-0.005018542100998502			
[s] Observation start time (MET)	523250673.184000	523249494.69269			
Observation start date	2014-08-01T03:23:26	2014-08-01T03:04:54			
[s] Observation end time (MET)	523280791.184000	523281830.36948			
Observation end date	2014-08-01T11:45:24	2014-08-01T12:03:50			
Read mode	TIMED	TIMED			

2.3 Aspect

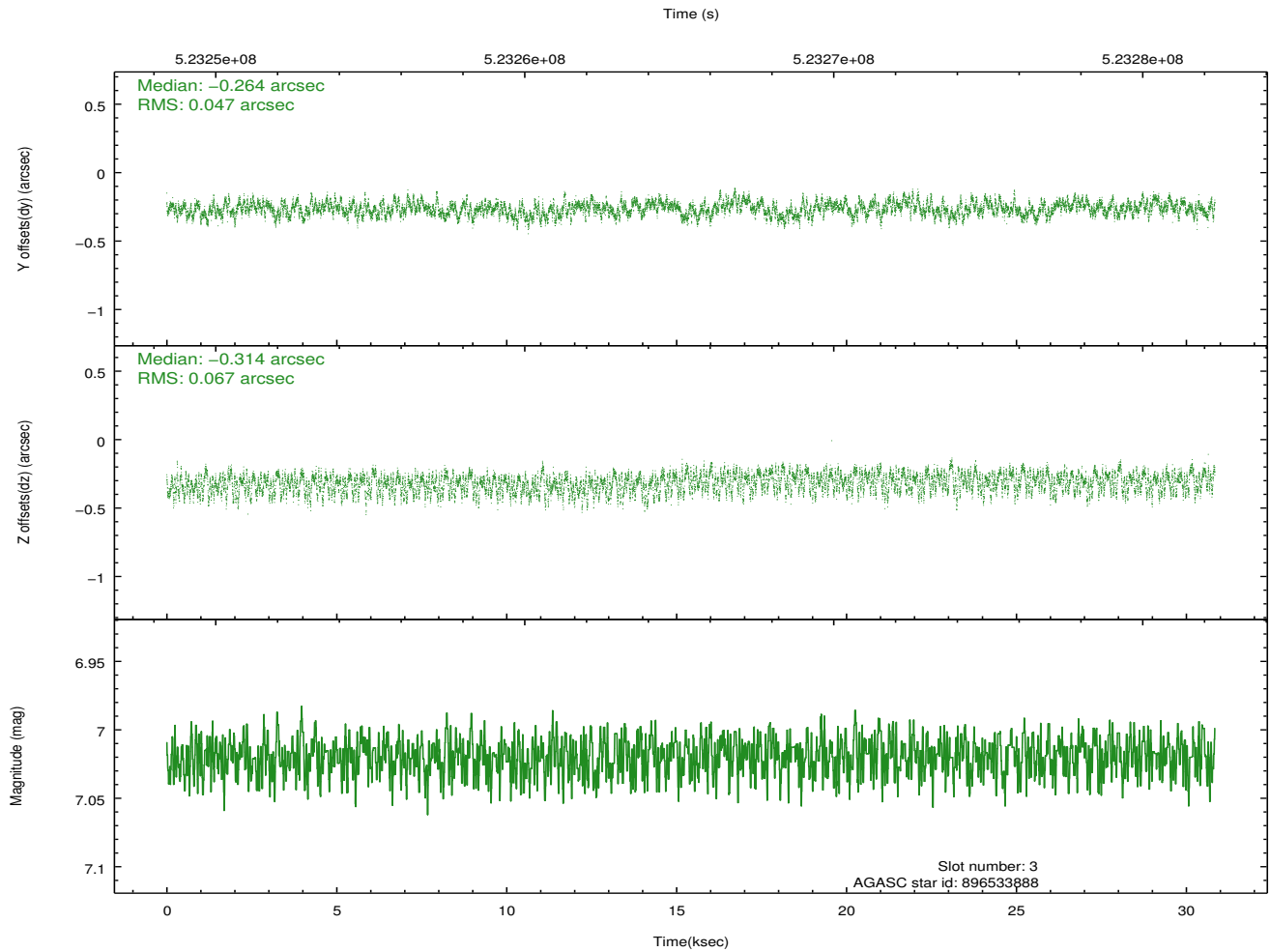
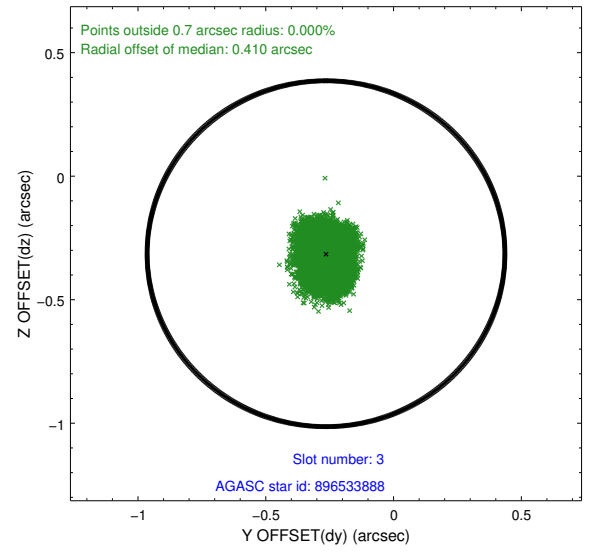
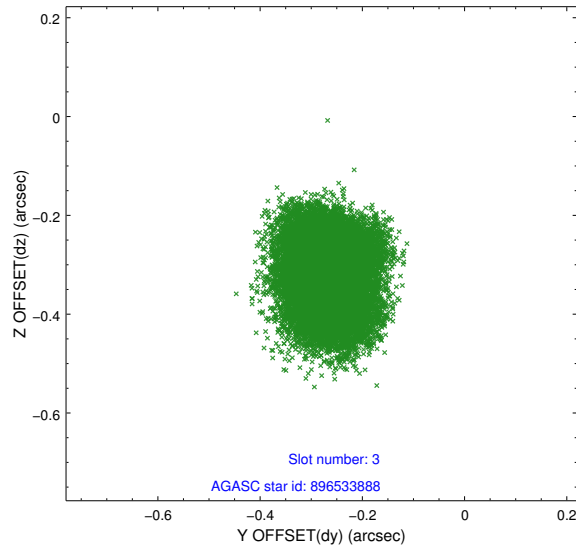


Slot Statistics

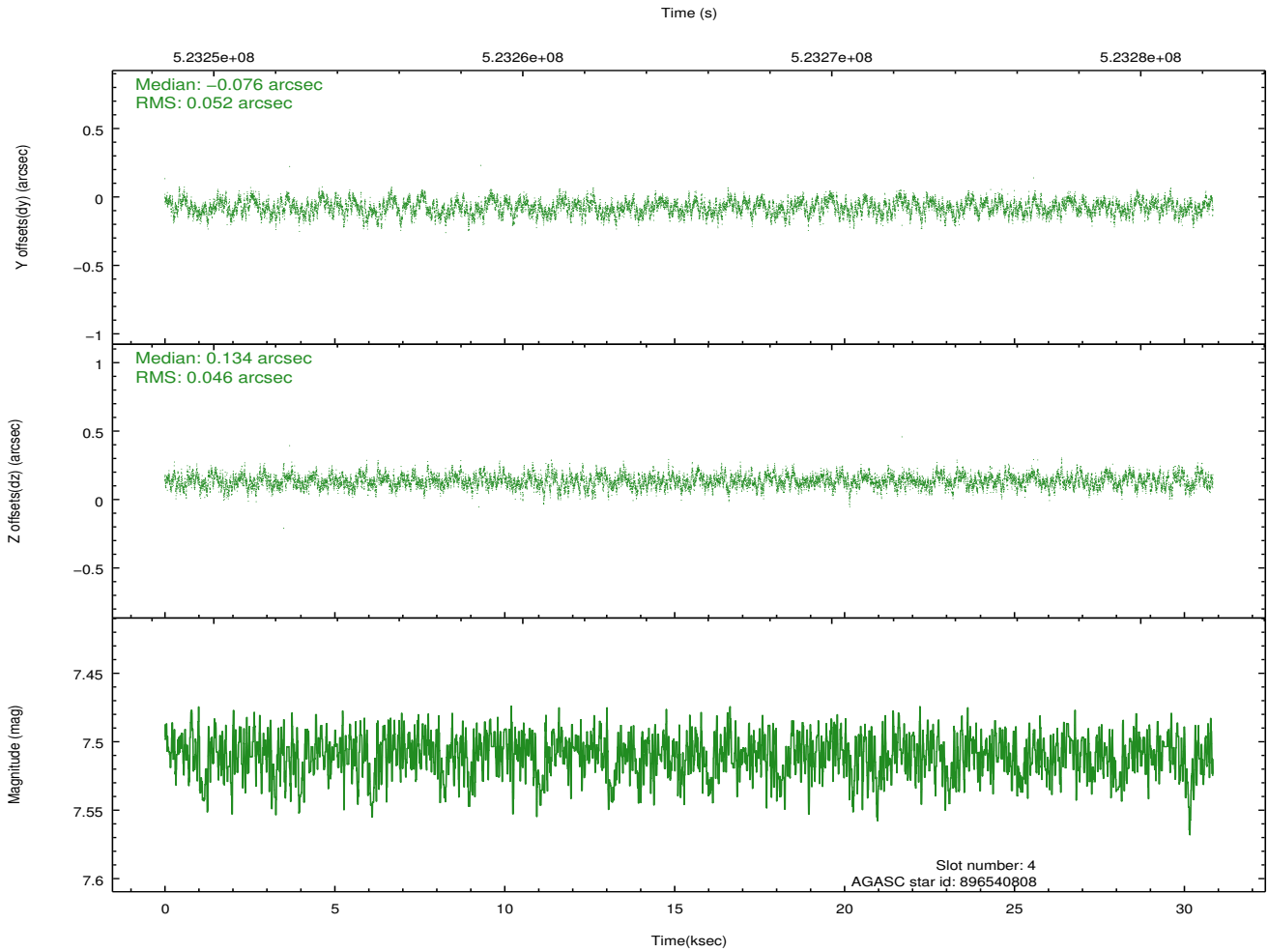
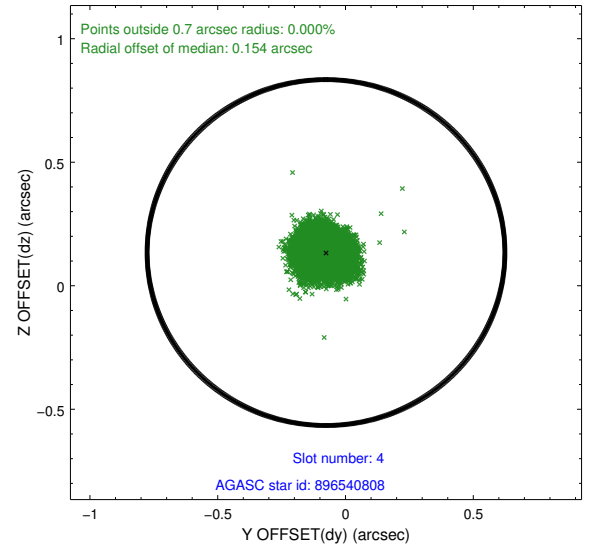
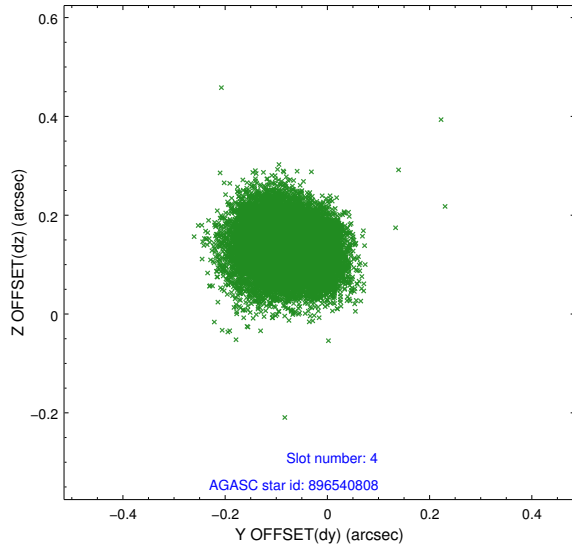
slot	status	id	mag	n_pts	med_dy	med_dz	dr1	dr2	ra	dec	mean_y	mean_z
0	FID	ACIS-I-1	7.09	7523	-0.035	-0.030	0.017	0.028	0.000000	0.000000	915.30	-844.00
1	FID	ACIS-I-4	7.04	7523	0.296	0.061	0.019	0.027	0.000000	0.000000	2135.63	1055.91
2	FID	ACIS-I-5	7.07	7521	-0.358	0.039	0.014	0.021	0.000000	0.000000	-1833.02	1053.65
3	GUIDE	896533888	7.02	15043	-0.264	-0.314	0.089	0.138	266.666434	-29.392757	222.81	1813.02
4	GUIDE	896540808	7.51	15044	-0.076	0.134	0.074	0.117	265.985401	-29.308604	-305.43	-279.09
5	GUIDE	896404784	9.30	15038	-0.049	0.255	0.154	0.237	265.491289	-29.092670	-1235.63	-1745.52
6	GUIDE	896532952	8.99	15030	-0.090	0.248	0.100	0.164	266.383644	-28.787617	-2038.82	1164.47
7	GUIDE	966791536	9.31	15027	0.486	-0.322	0.222	0.343	265.423122	-30.013043	2040.40	-2285.77

2.4 Star Slots

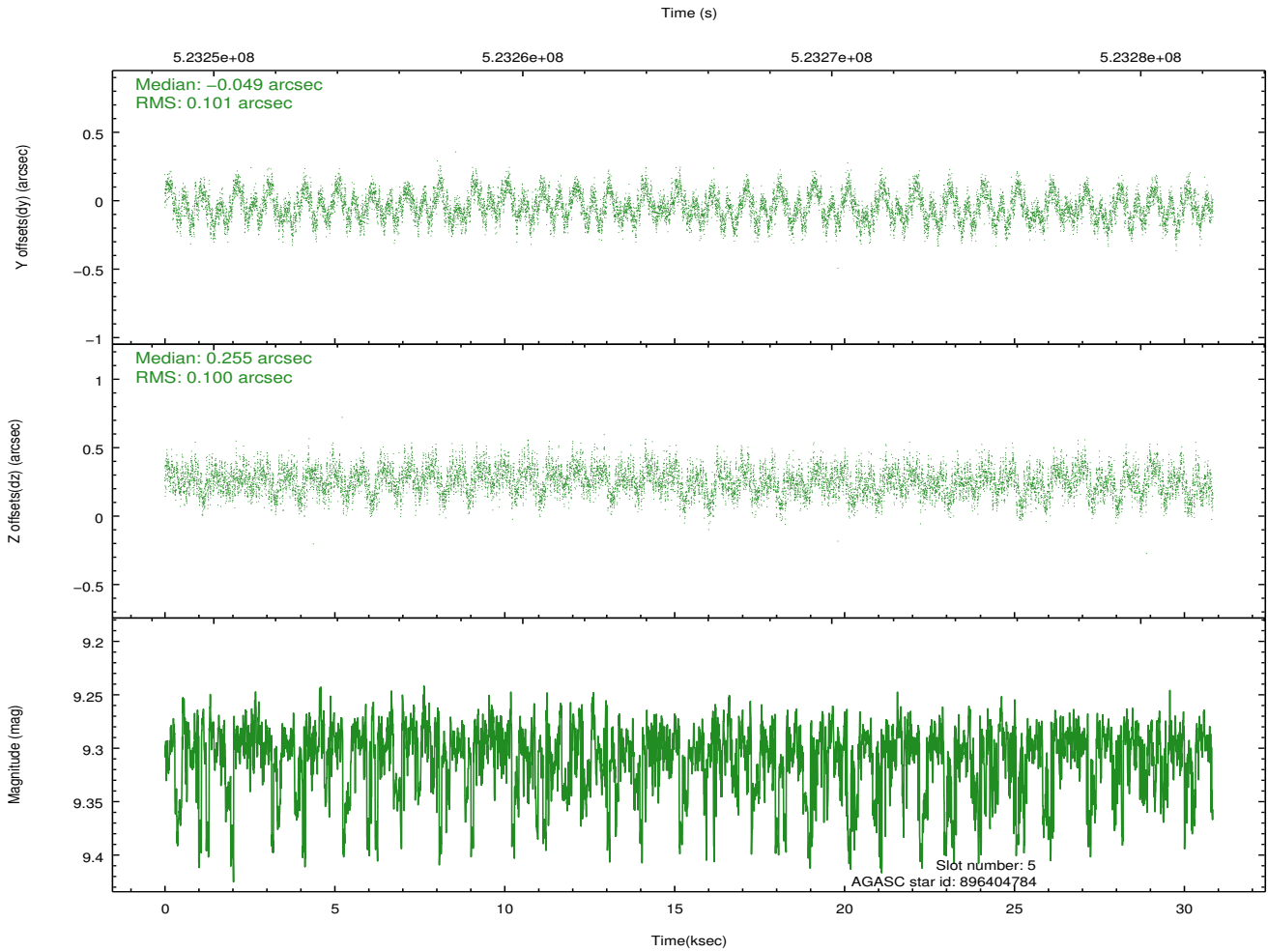
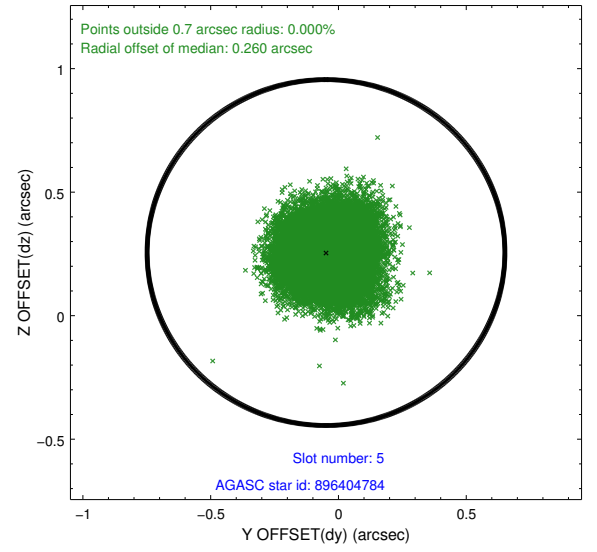
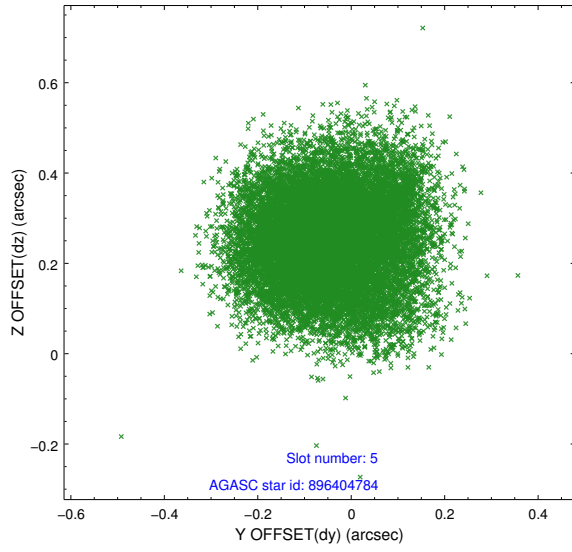
2.4.1 Slot 3



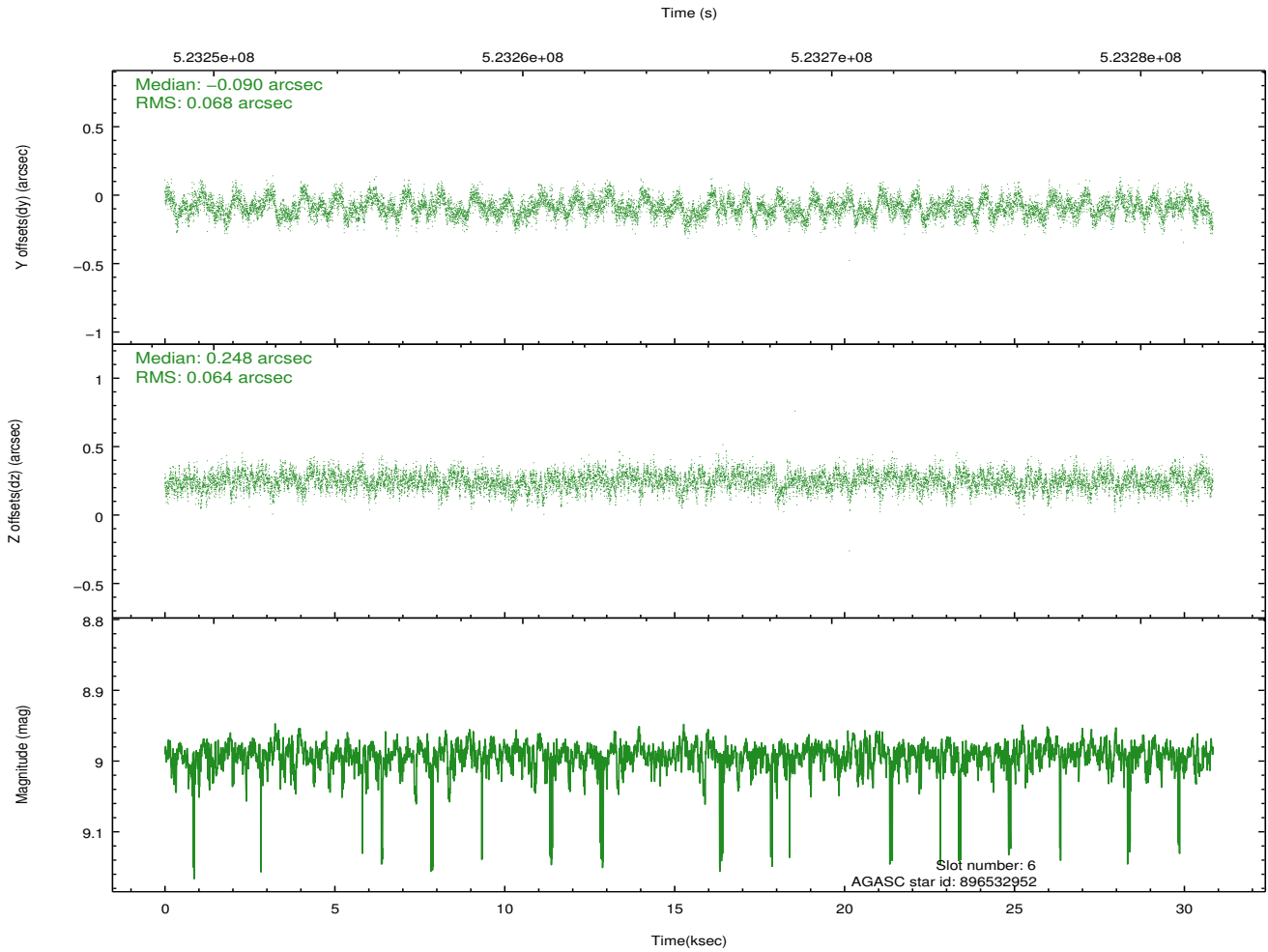
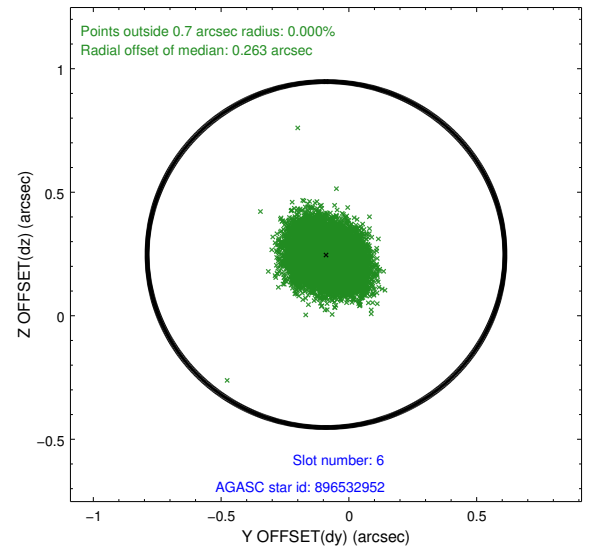
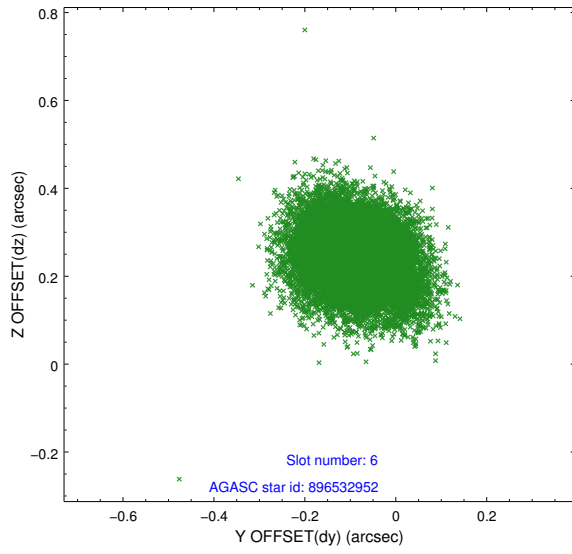
2.4.2 Slot 4



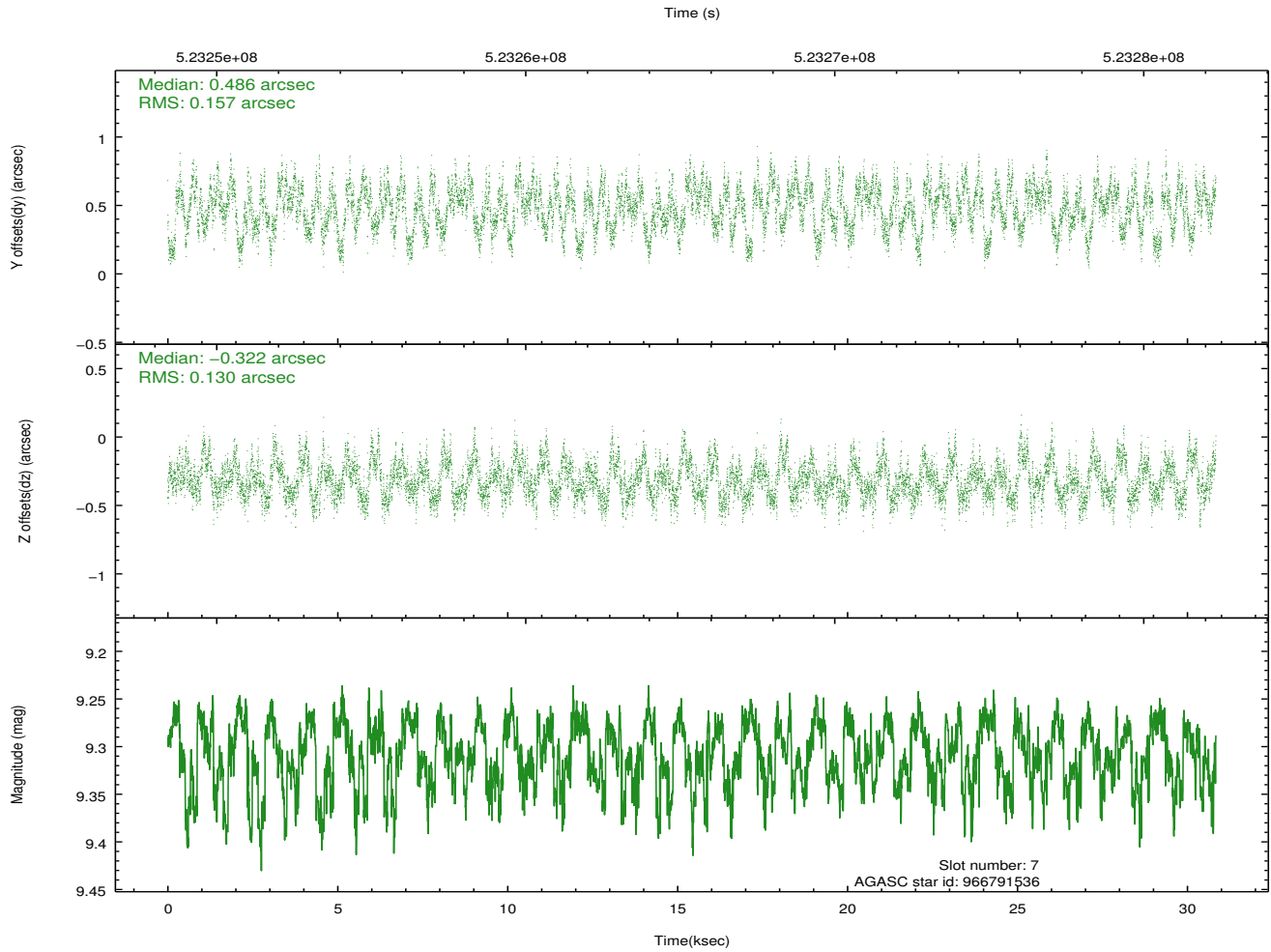
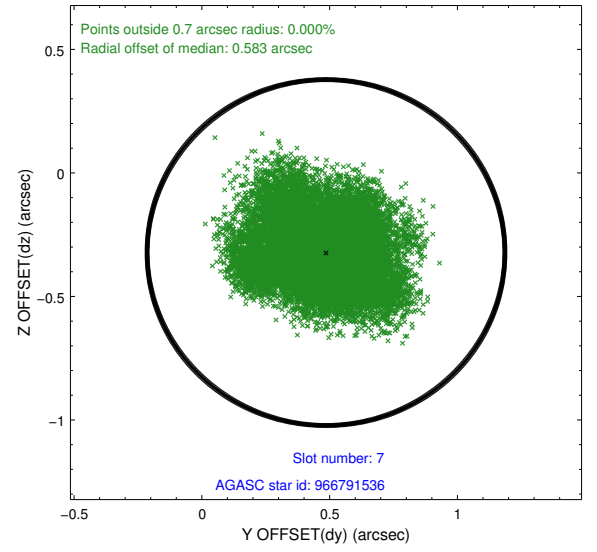
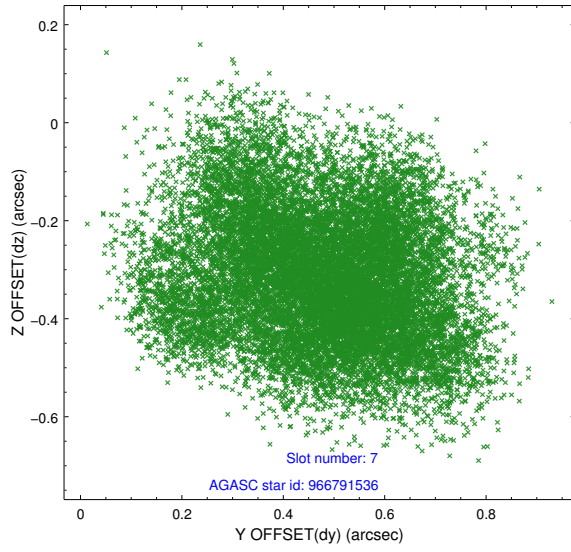
2.4.3 Slot 5



2.4.4 Slot 6

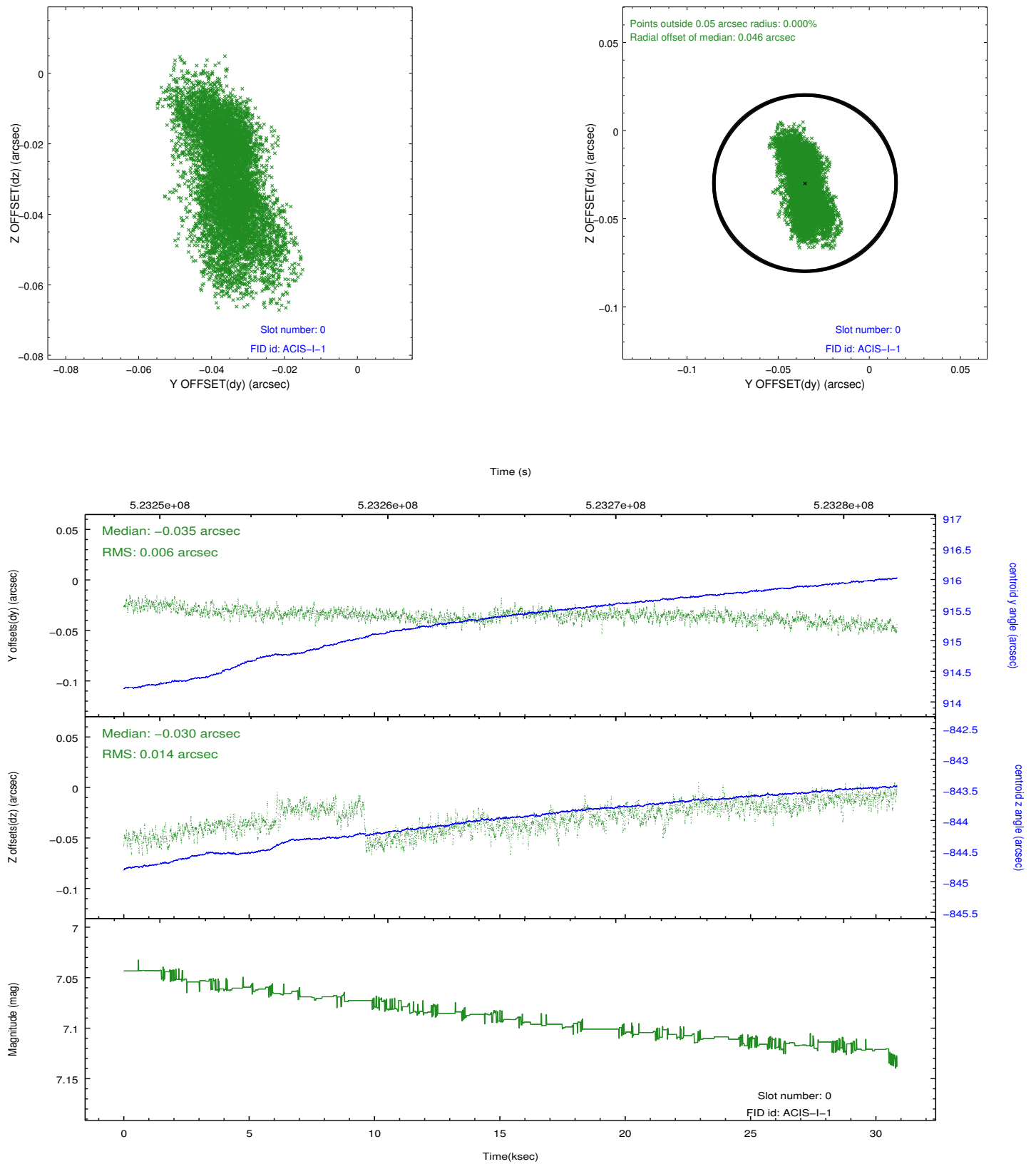


2.4.5 Slot 7

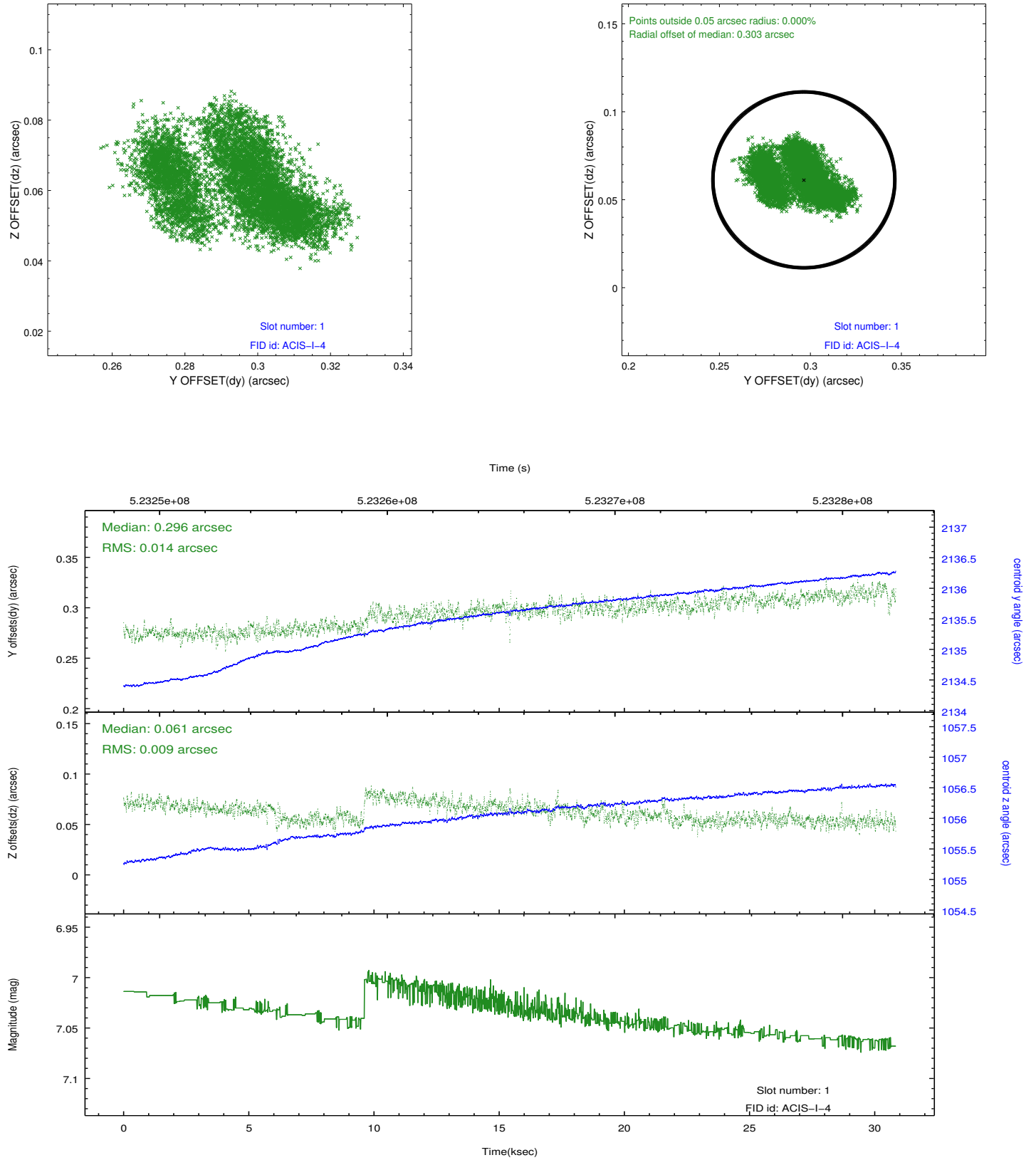


2.5 FID Slots

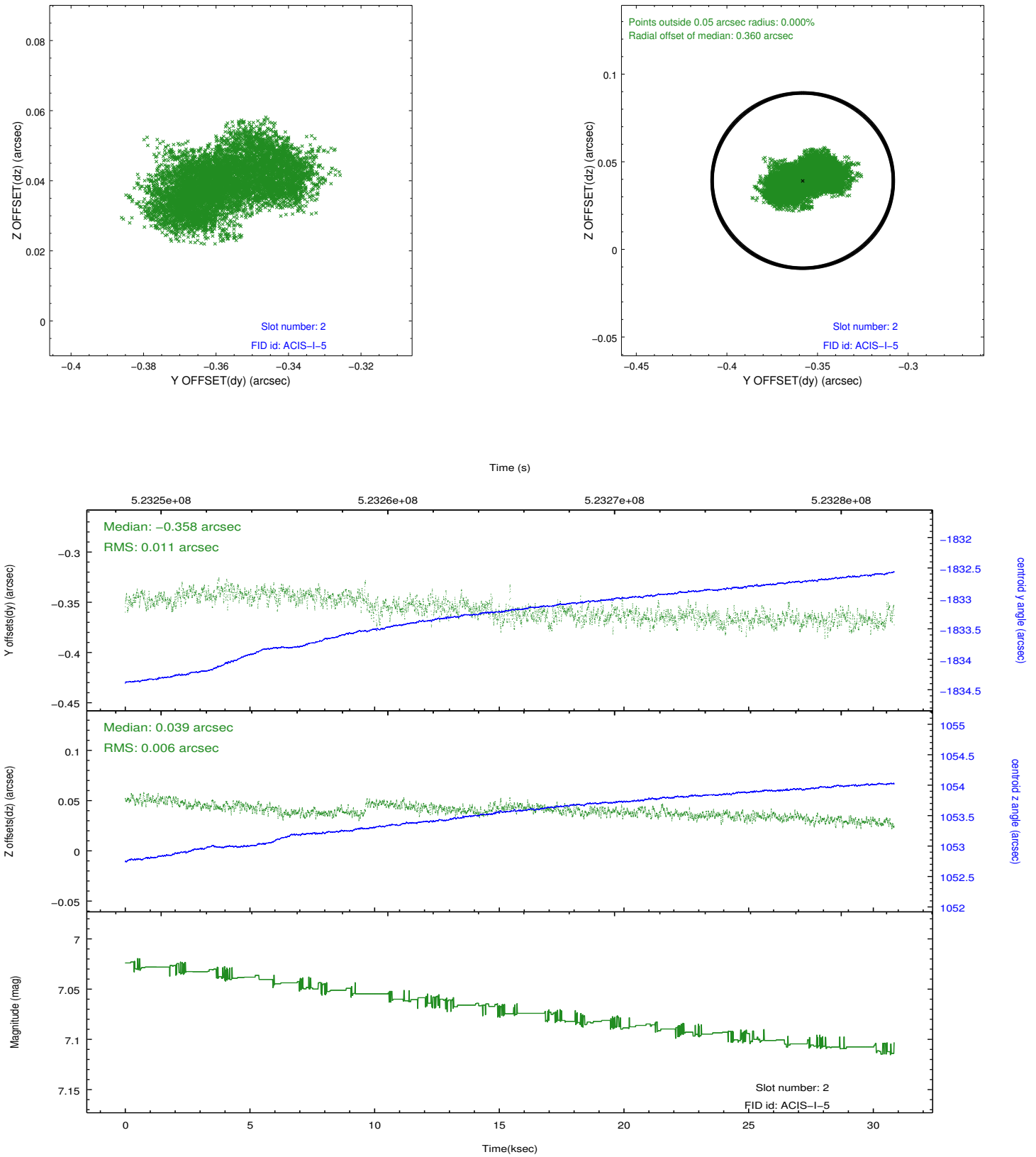
2.5.1 Slot 0



2.5.2 Slot 1



2.5.3 Slot 2



A Summary

A.1 Status

V&V Scientist	Joy Nichols
V&V Date (YYYY-MM-DD)	2014.08.04
V&V Edition	1
V&V Disposition and Status	OK
V&V Charge Time	30.206400232315

A.2 Comments