

V&V Reference Report

L2 ASCDS Version : 10.2.4

Observation 16526 - L2 Version 1
Chandra X-Ray Center

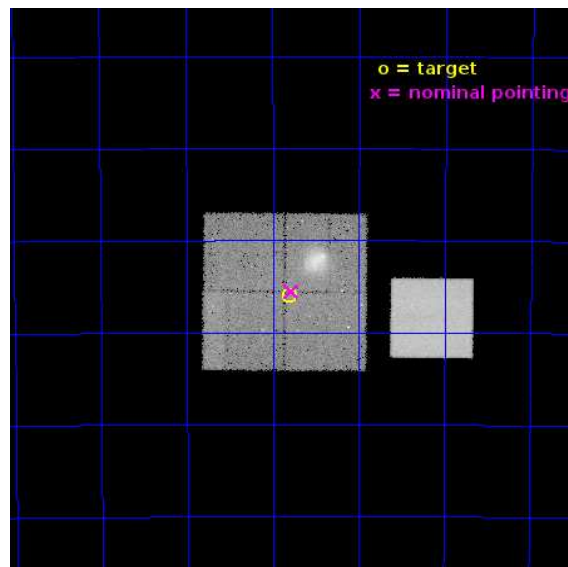
L2 Processing Date : Aug 13 2014

Contents

1	Front	2
2	OBI	3
2.1	OBI	3
2.1.1	Images	3
2.1.2	Bias	3
2.1.3	Parameters	4
2.1.4	Events	4
2.2	Compared Parameters	5
2.3	Aspect	6
2.4	Star Slots	9
2.4.1	Slot 3	9
2.4.2	Slot 4	10
2.4.3	Slot 5	11
2.4.4	Slot 6	12
2.4.5	Slot 7	13
2.5	FID Slots	14
2.5.1	Slot 0	14
2.5.2	Slot 1	15
2.5.3	Slot 2	16
A	Summary	17
A.1	Status	17
A.2	Comments	17

1 Front

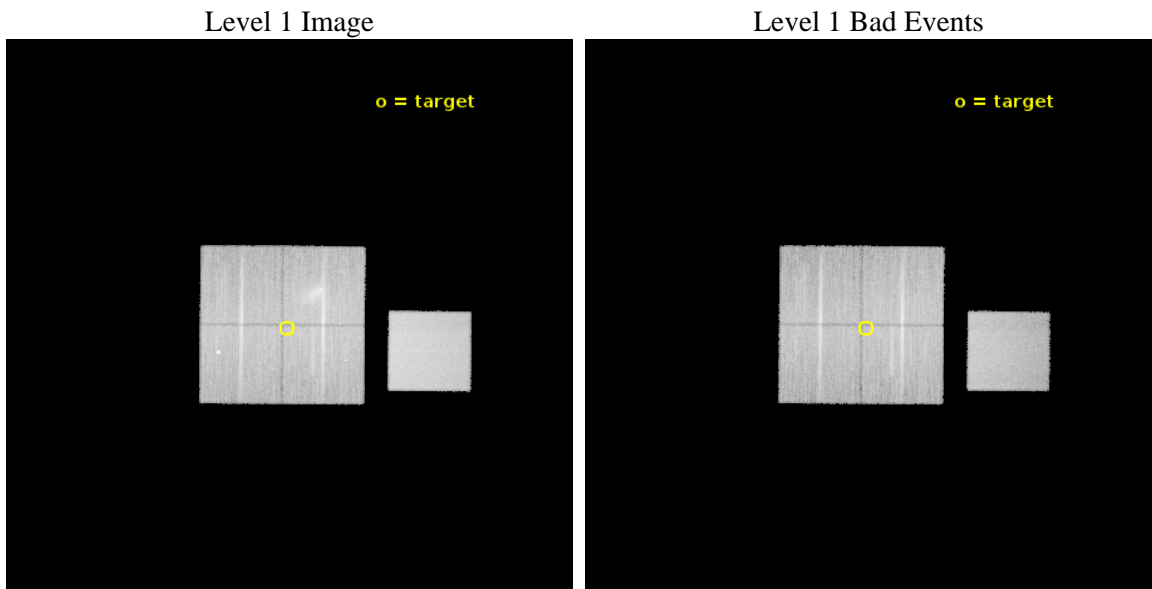
seq_num	801381	Sequence number
obs_id	16526	Observation id
title	SNAPSHOTS IN THE HISTORY OF DISSOCIATIVE MAJOR MERGERS	Proposal ti
observer	Dr Florian Pacaud	Principal investigator
object	Abell S0295	Source name
dtcycle	0	
cycle	P	events from which exps? Prim/Second/Both
ra_targ	41.45	Observer's specified target RA [deg]
dec_targ	-53.1	Observer's specified target Dec [deg]
ra_nom	41.445831660212	Nominal RA [deg]
dec_nom	-53.092194254617	Nominal Dec [deg]
roll_nom	90.479239678913	Nominal Roll [deg]
revision	1	Processing version of data
ontime	45067.800346613	Sum of GTIs [s]
livetime	44478.956356652	Livetime [s]
ontime0	45067.800346613	Sum of GTIs [s]
ontime1	45058.377355337	Sum of GTIs [s]
ontime2	45067.800346613	Sum of GTIs [s]
ontime3	45067.800346613	Sum of GTIs [s]
ontime7	45067.800346613	Sum of GTIs [s]
l2events	231085	Number of level 2 events



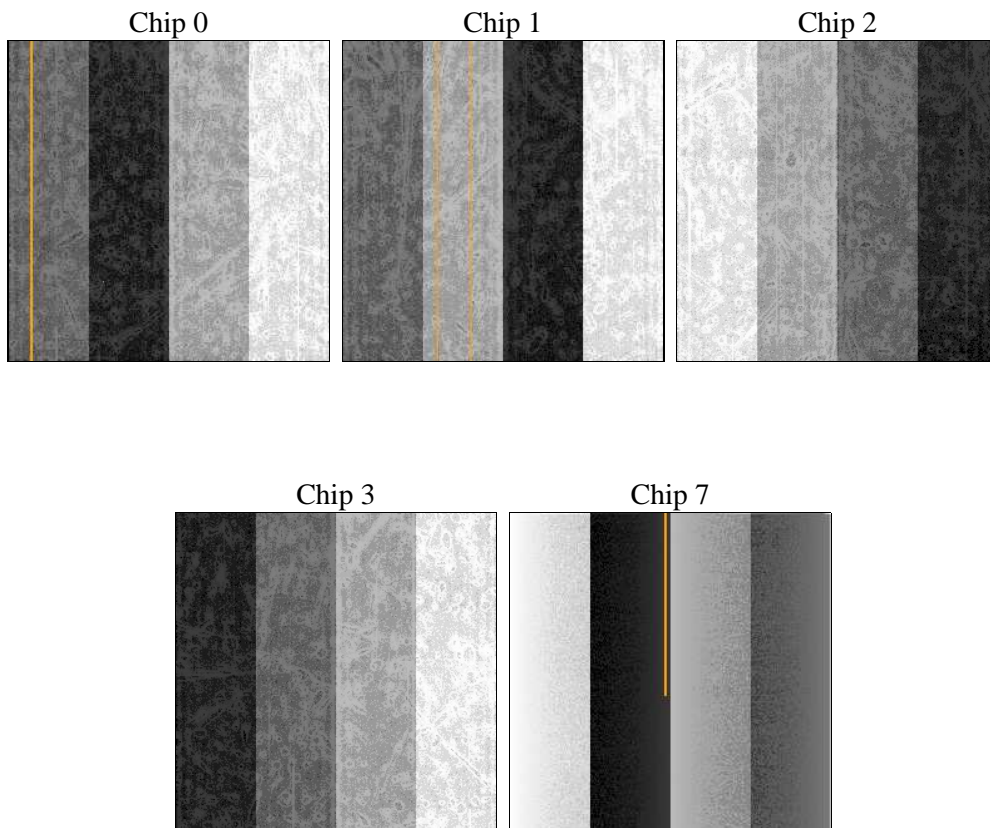
2 OBI

2.1 OBI

2.1.1 Images



2.1.2 Bias



2.1.3 Parameters

obi_num	0	Obi number	sched_exp_time	45000.000000	[s] Scheduled observation exposure time
ascdsver	10.2.4	Processing system revision	ontime	45067.800346613	Sum of GTIs [s]
caldbver	4.6.2	 	ontime0	45067.800346613	Sum of GTIs [s]
date	2014-08-13T23:13:48	Date and time of file creation	ontime1	45058.377355337	Sum of GTIs [s]
revision	1	Processing version of data	ontime2	45067.800346613	Sum of GTIs [s]
			ontime3	45067.800346613	Sum of GTIs [s]
			ontime7	45067.800346613	Sum of GTIs [s]
			l1events	1151623	Number of level 1 events

2.1.4 Events

	ccd 0	ccd 1	ccd 2	ccd 3	ccd 7
level 1 events	192694	203737	238979	216037	300176
rejected events	166881	172878	195073	190646	172178
rejected %	86%	84%	81%	88%	57%

	ccd 0	ccd 1	ccd 2	ccd 3	ccd 7
grade 0 events	8852	11707	24086	9080	10832
	4%	5%	10%	4%	3%
grade 1 events	103	116	164	141	335
	0%	0%	0%	0%	0%
grade 2 events	6536	7140	7962	5625	26456
	3%	3%	3%	2%	8%
grade 3 events	2639	2782	3141	2756	10539
	1%	1%	1%	1%	3%
grade 4 events	2424	2945	3245	2638	10307
	1%	1%	1%	1%	3%
grade 5 events	10149	11212	9715	11746	30509
	5%	5%	4%	5%	10%
grade 6 events	5367	6292	5481	5293	69885
	2%	3%	2%	2%	23%
grade 7 events	156624	161543	185185	178758	141313
	81%	79%	77%	82%	47%

2.2 Compared Parameters

Parameter	Planned	Actual	Parameter	Planned	Actual
Instrument	ACIS	ACIS	Obspar format version number	7	7
Detector	ACIS-01237	ACIS-01237	Obspar file type	PREDICTED	ACTUAL
Grating	NONE	NONE	Obspar update status	NONE	UPDATED
Data mode	VFAINT	VFAINT	Number of optional ACIS chips dropped	0	0
Observation mode	POINTING	POINTING	On-chip summing requested	N	N
[deg] Pointing RA	41.469285	41.44583166021214	Subarray requested	NONE	NONE
[deg] Pointing Dec	-53.115945	-53.09219425461666	Alternating exposures requested	N	N
[deg] Pointing Roll	90.289299	90.479239678913	[s] Primary exposure time	0.000000	3.1
[mm] SIM focus pos	-0.782348	-0.7809083437167272			
[mm] SIM defocus	0	0.001439871863259334			
[mm] SIM translation stage pos	-233.592463	-233.5874344608287			
[mm] SIM translation stage offset	0	-0.005018542100998502			
[s] Observation start time (MET)	524284627.184000	524283543.45003			
Observation start date	2014-08-13T02:36:00	2014-08-13T02:19:03			
[s] Observation end time (MET)	524329627.184000	524330591.46513			
Observation end date	2014-08-13T15:06:00	2014-08-13T15:23:11			
Read mode	TIMED	TIMED			

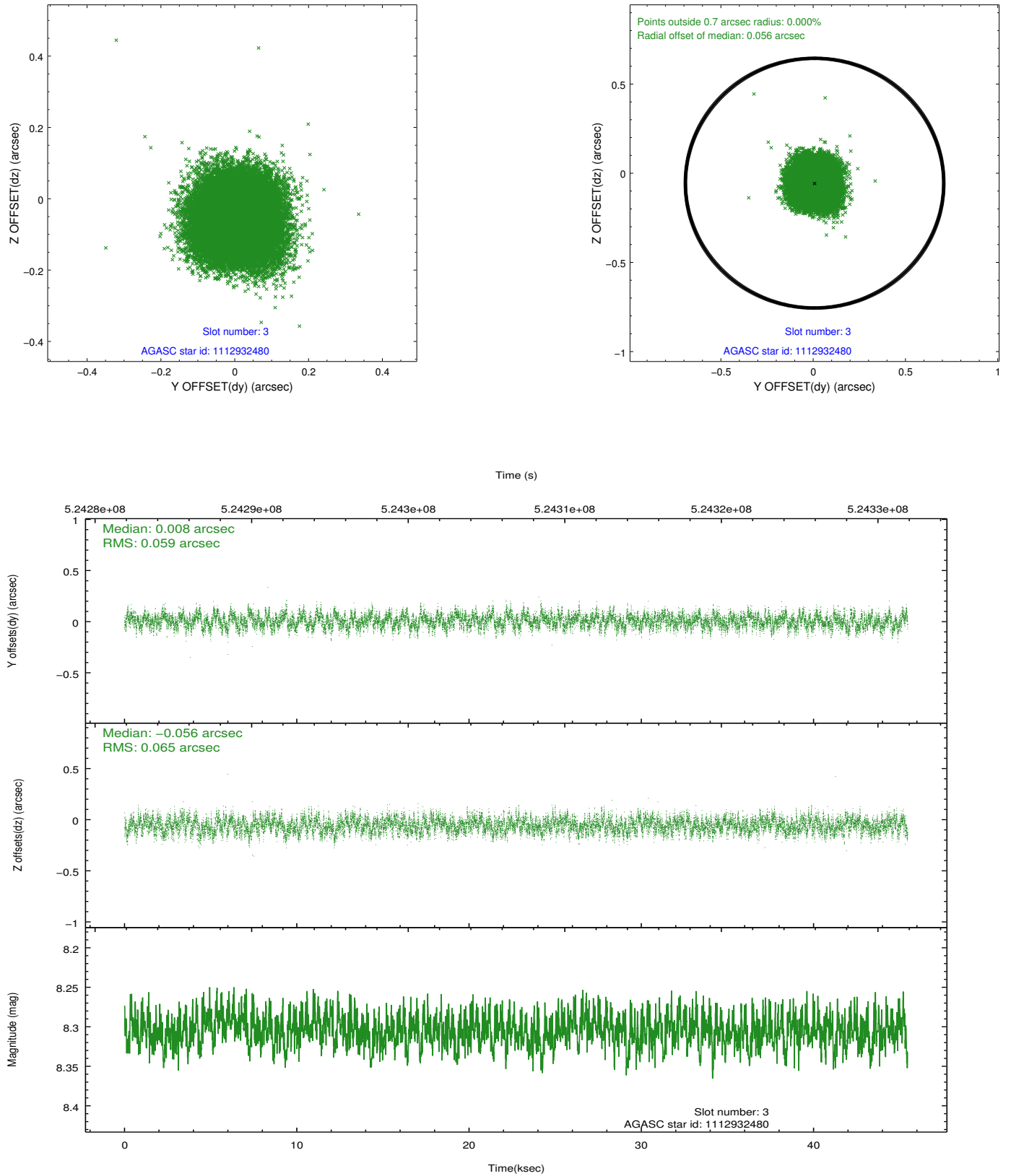
2.3 Aspect

Slot Statistics

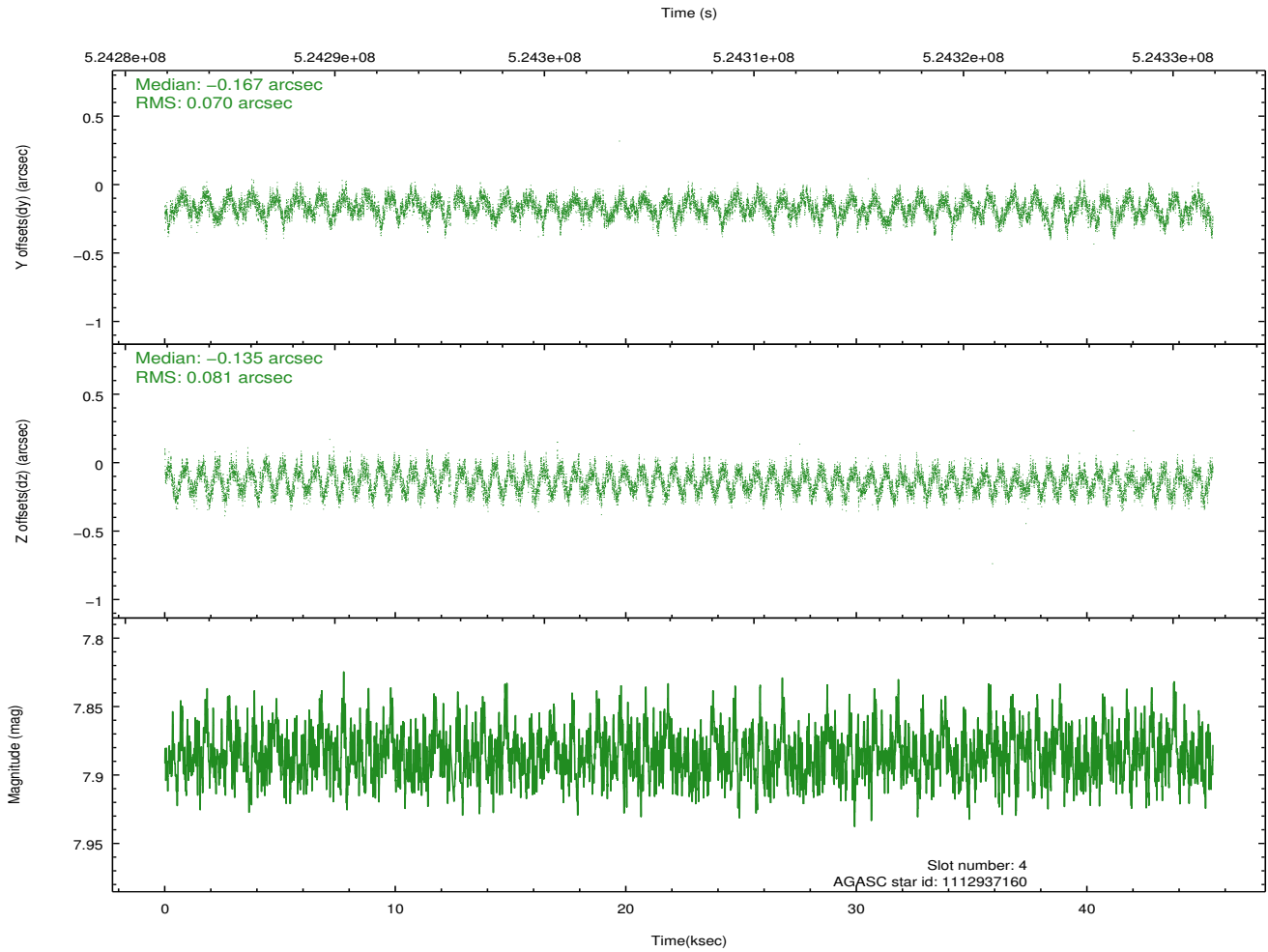
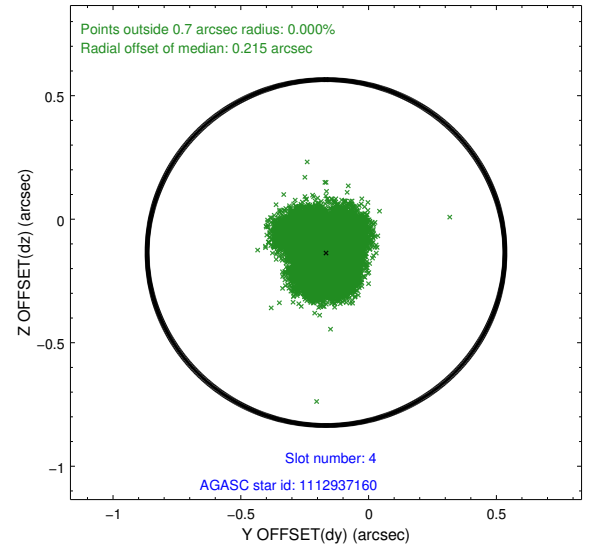
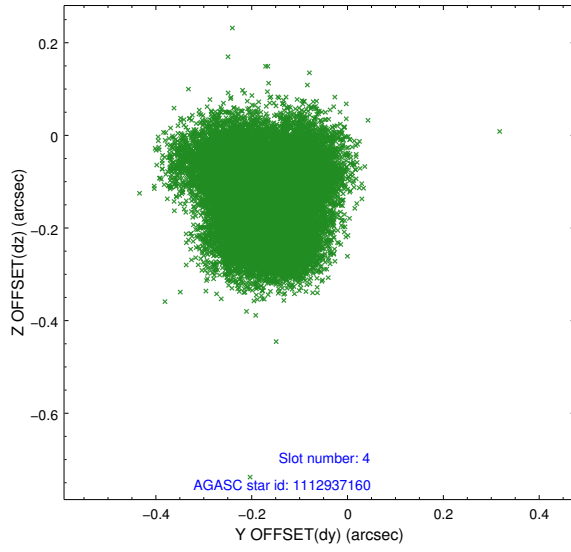
slot	status	id	mag	n_pts	med_dy	med_dz	dr1	dr2	ra	dec	mean_y	mean_z
0	FID	ACIS-I-1	7.14	11088	-0.033	-0.016	0.024	0.058	0.000000	0.000000	918.27	-842.46
1	FID	ACIS-I-4	7.07	11087	0.263	0.054	0.032	0.050	0.000000	0.000000	2138.53	1057.48
2	FID	ACIS-I-5	7.12	11087	-0.333	0.035	0.026	0.037	0.000000	0.000000	-1830.12	1055.13
3	GUIDE	1112932480	8.30	22170	0.008	-0.056	0.095	0.148	41.121788	-52.787610	1183.76	750.83
4	GUIDE	1112937160	7.89	22106	-0.167	-0.135	0.117	0.177	40.691929	-52.972857	513.83	1682.42
5	GUIDE	1112939176	8.79	22167	0.427	0.552	0.102	0.166	41.725683	-53.516285	-1444.64	-541.25
6	GUIDE	1112936088	7.47	22172	0.007	-0.260	0.083	0.134	40.359428	-53.320074	-741.33	2389.95
7	GUIDE	1112943208	7.93	22176	-0.272	-0.097	0.082	0.129	40.899521	-52.856390	935.28	1233.94

2.4 Star Slots

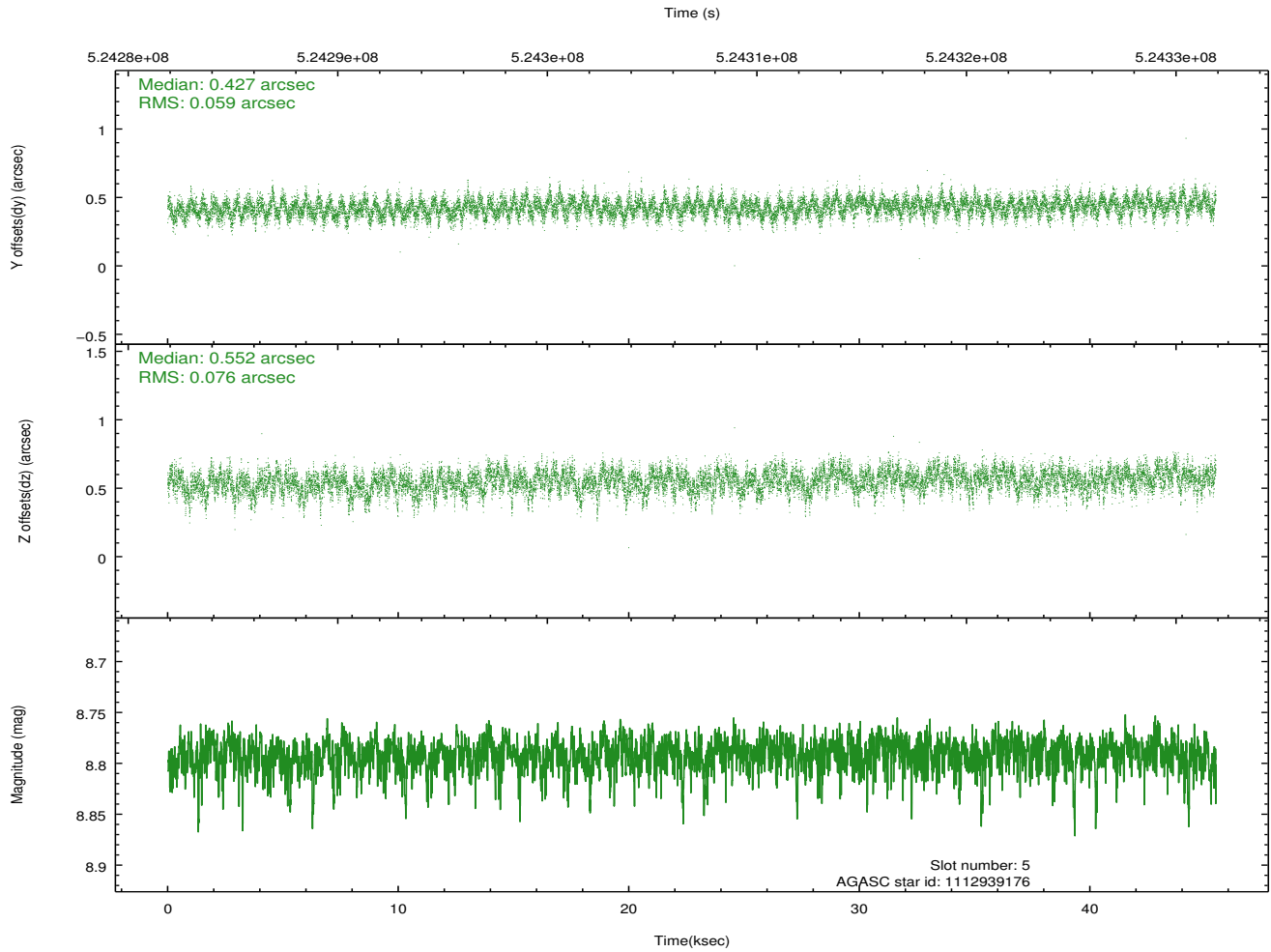
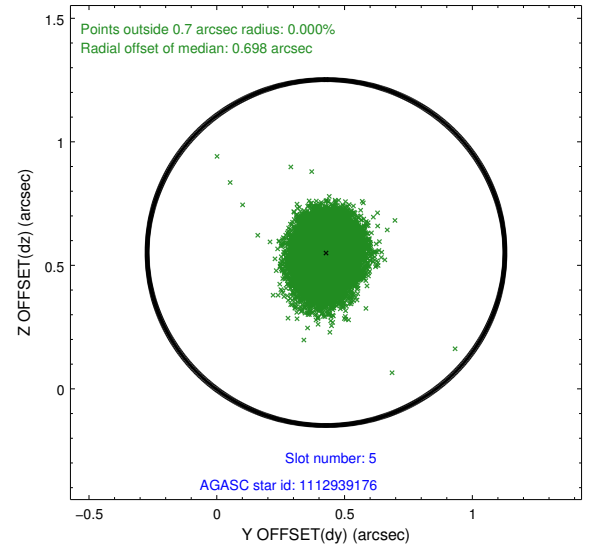
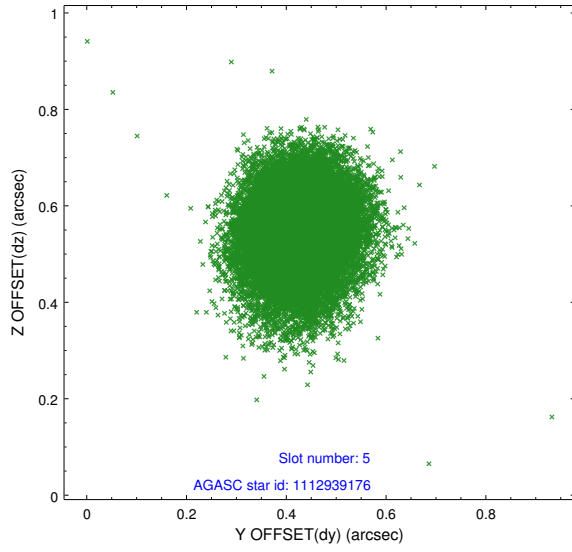
2.4.1 Slot 3



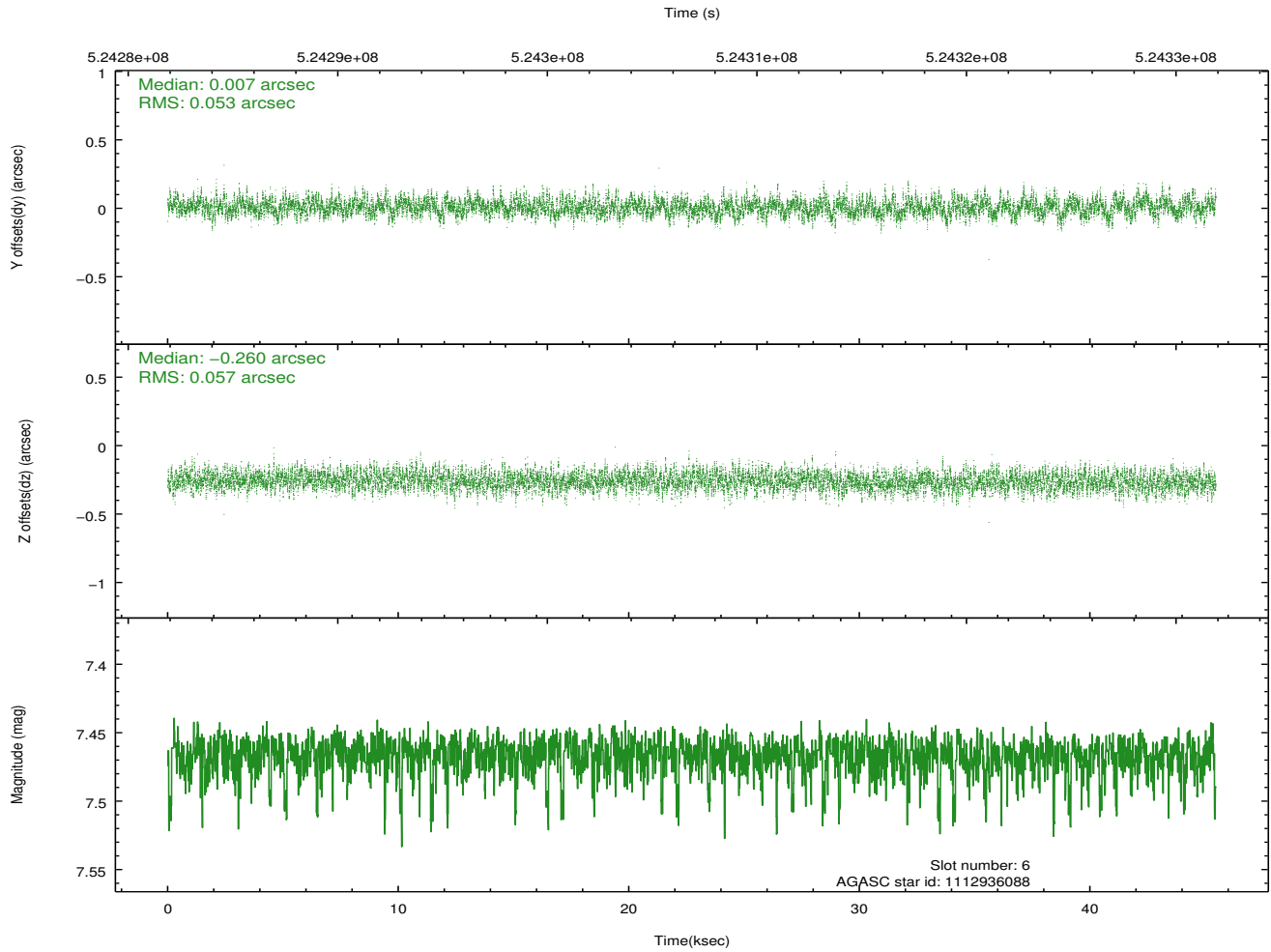
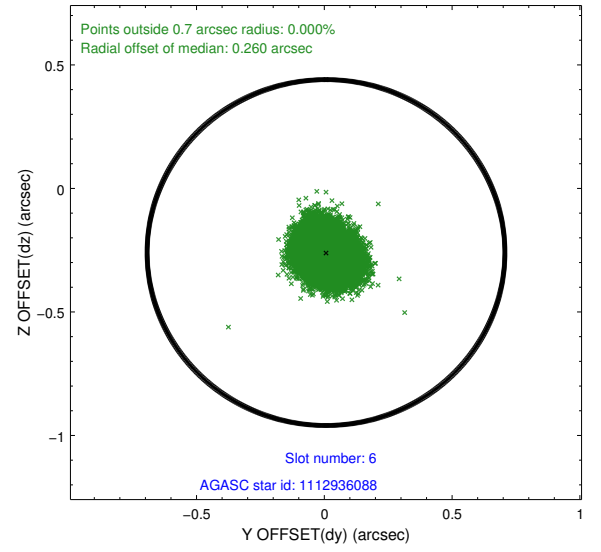
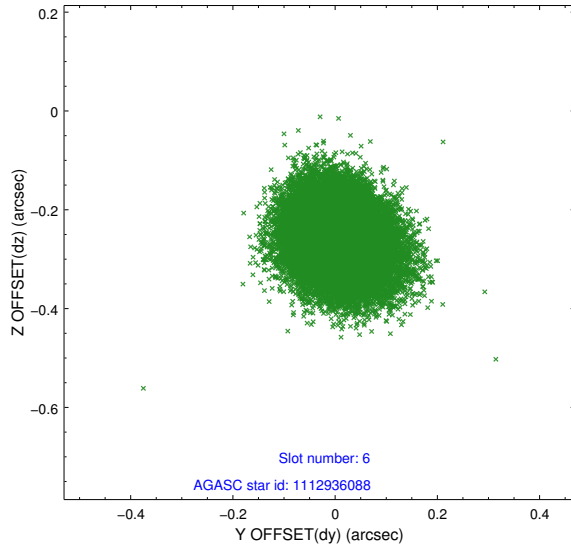
2.4.2 Slot 4



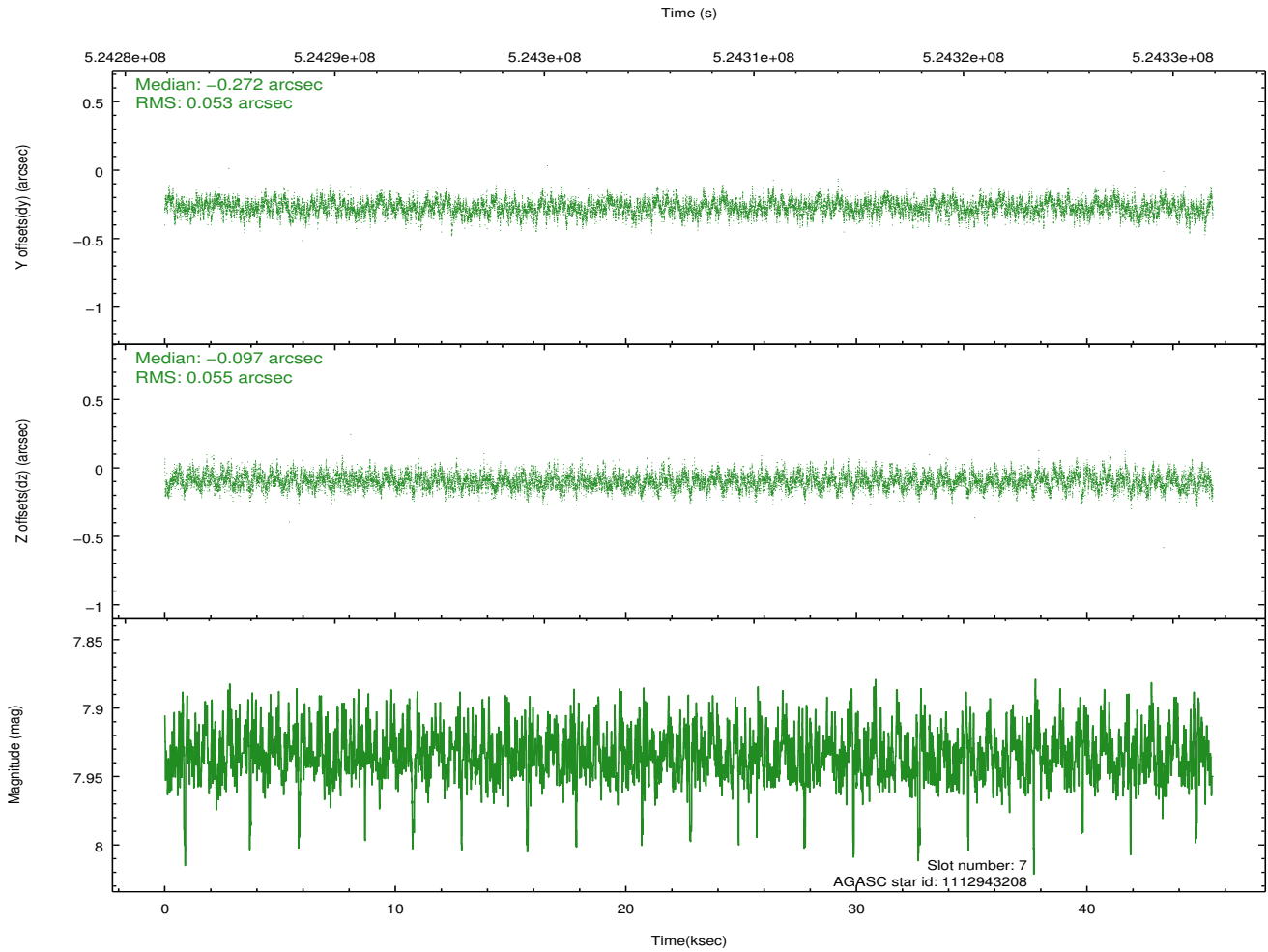
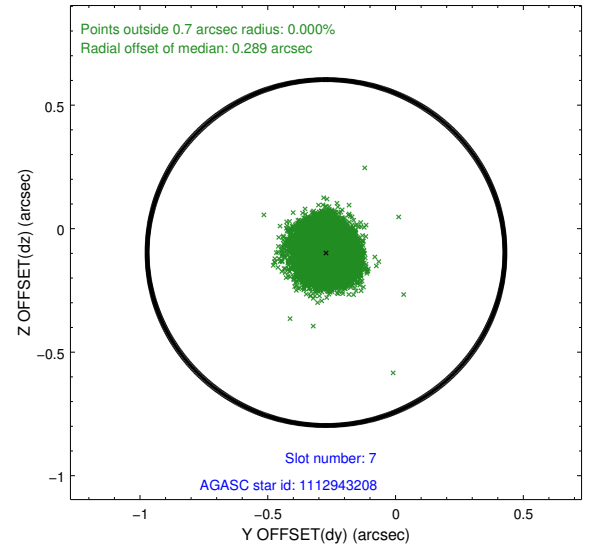
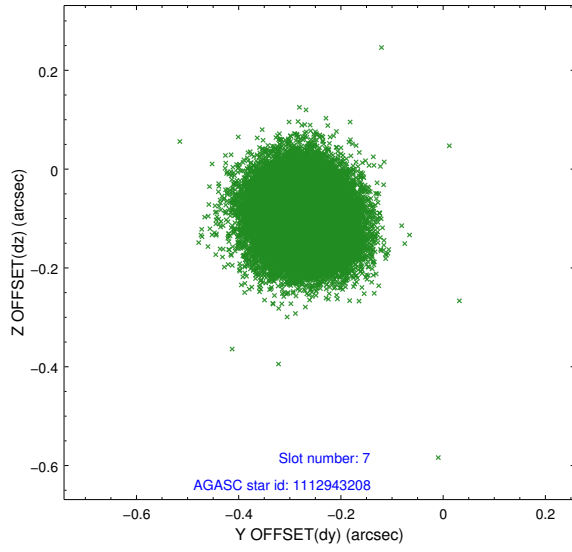
2.4.3 Slot 5



2.4.4 Slot 6

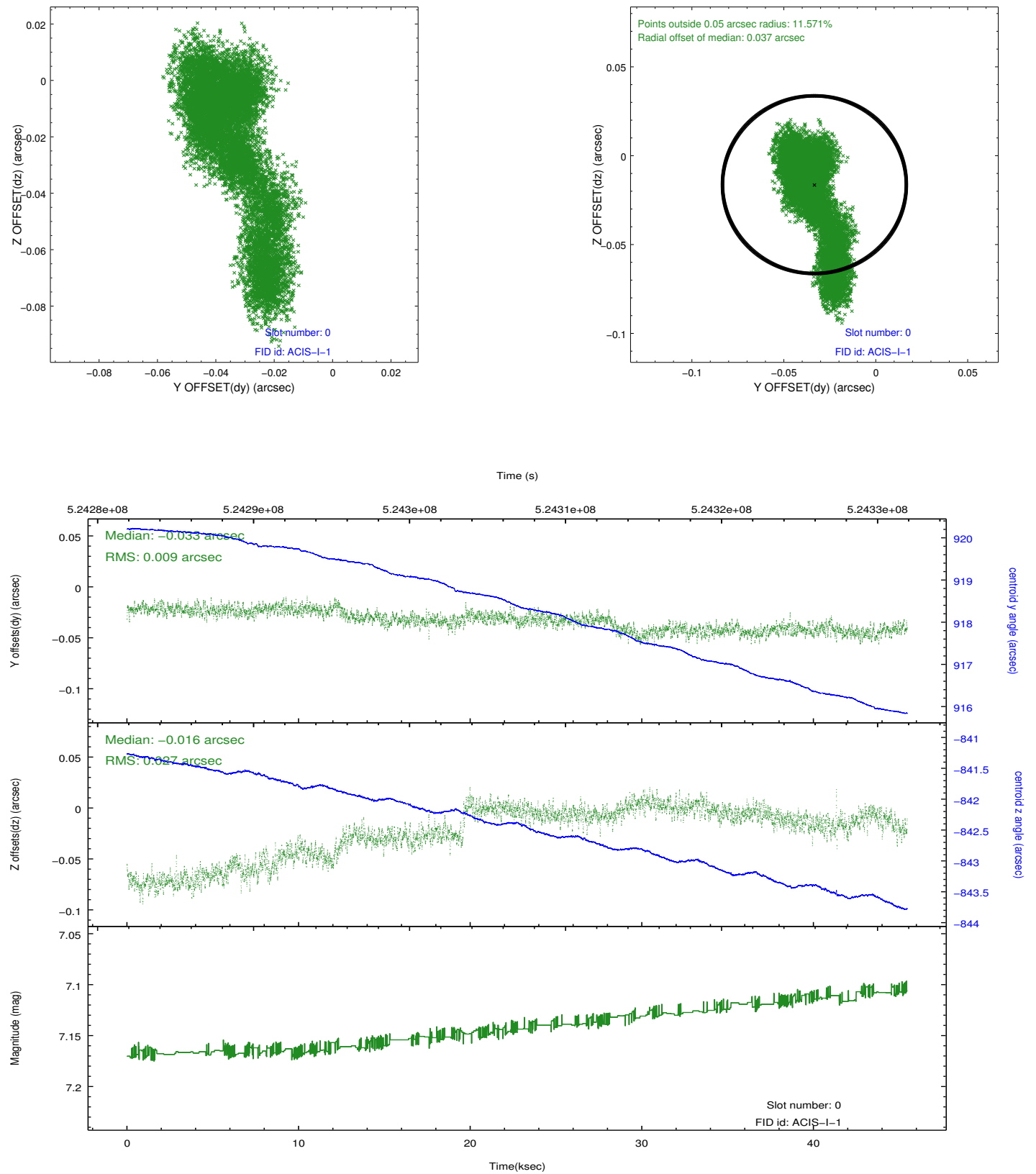


2.4.5 Slot 7

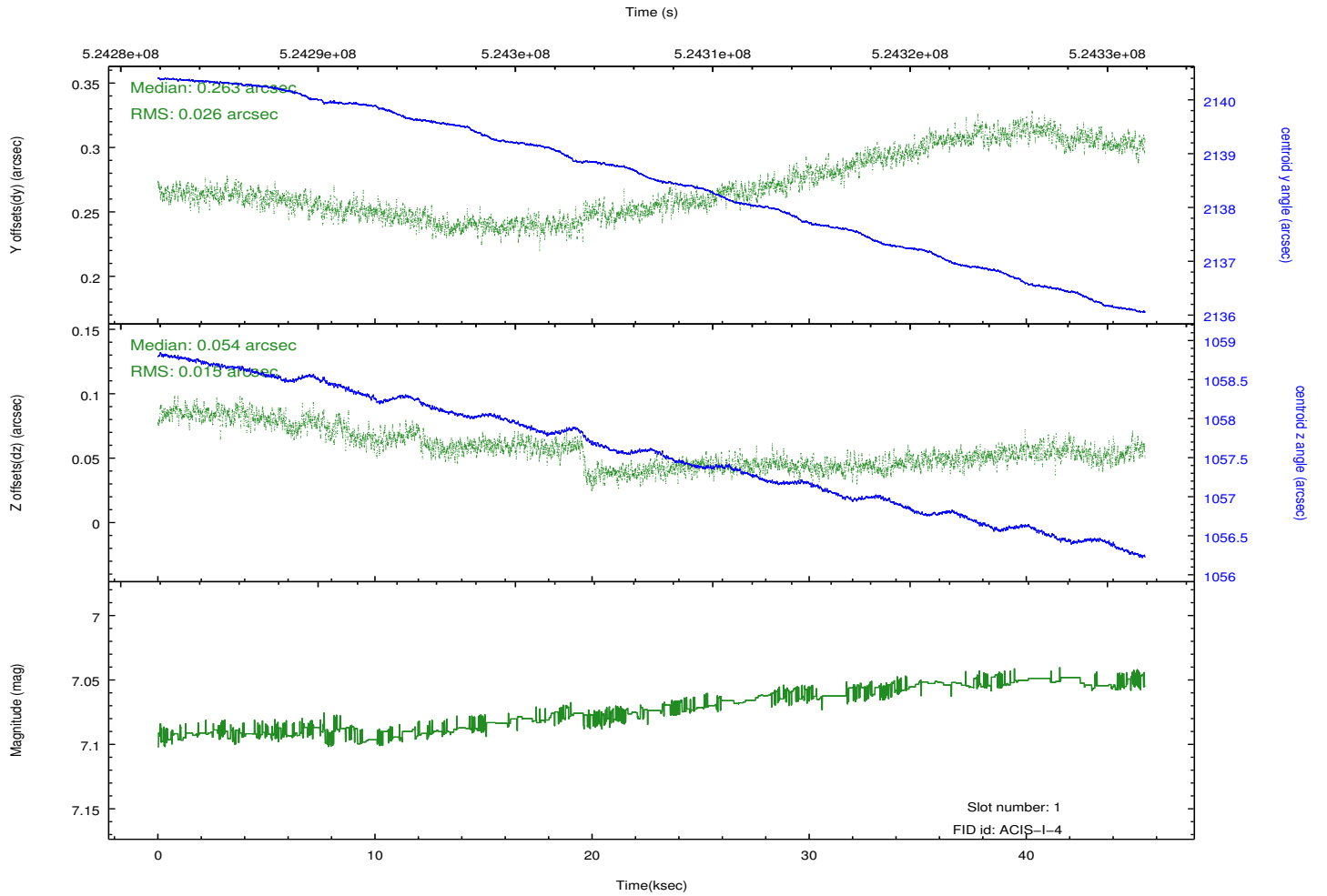
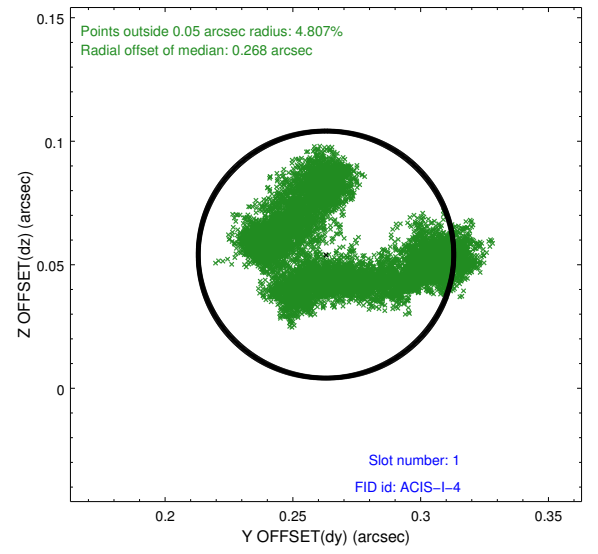
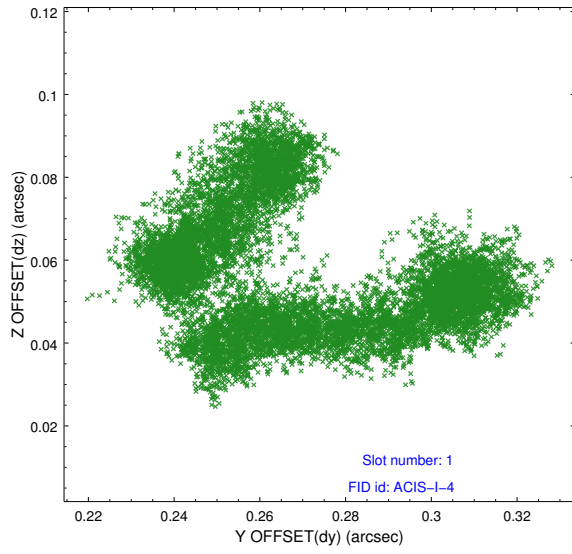


2.5 FID Slots

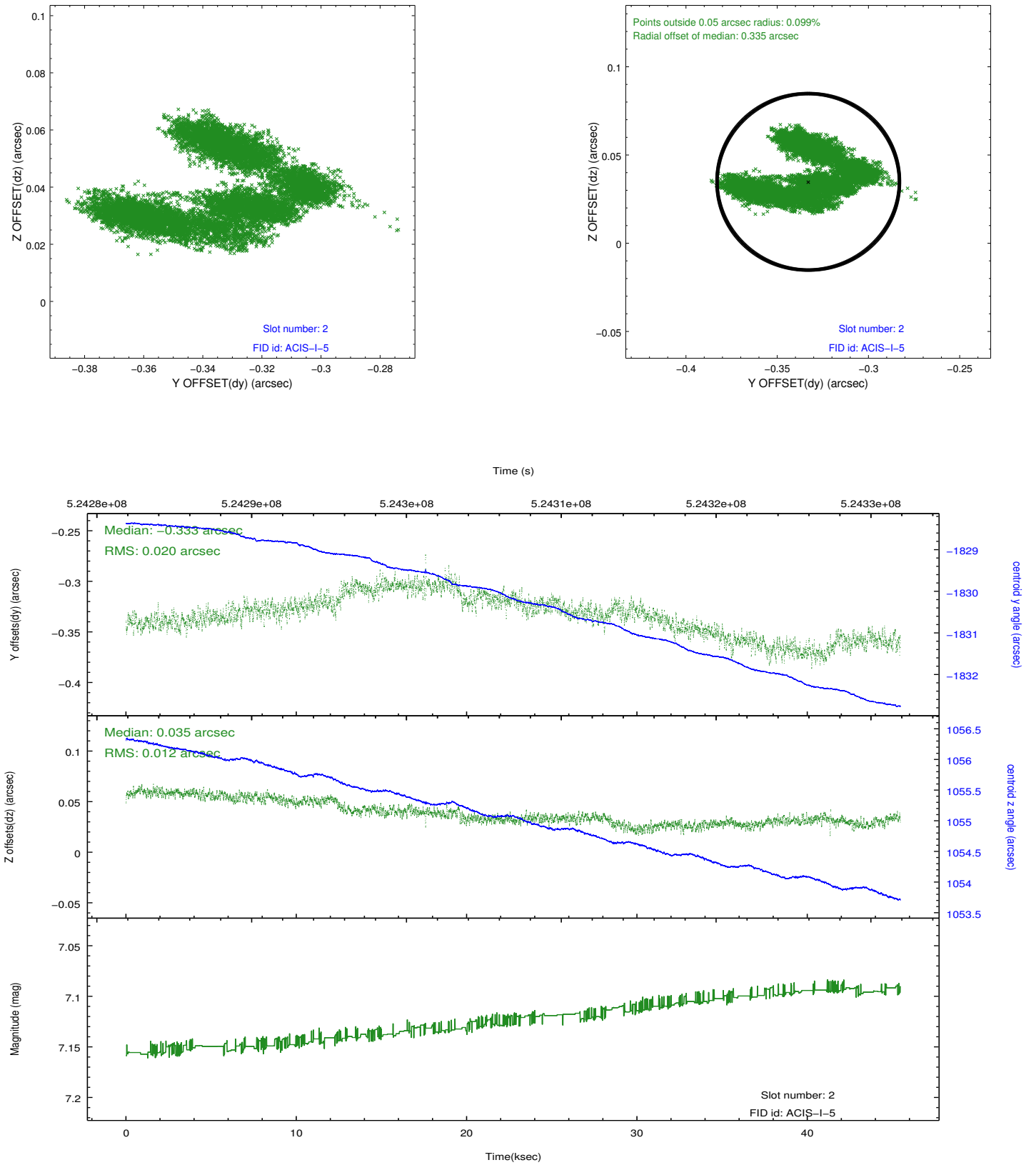
2.5.1 Slot 0



2.5.2 Slot 1



2.5.3 Slot 2



A Summary

A.1 Status

V&V Scientist	Joy Nichols
V&V Date (YYYY-MM-DD)	2014.08.14
V&V Edition	1
V&V Disposition and Status	OK
V&V Charge Time	45.067800346613

A.2 Comments