

V&V Reference Report

L2 ASCDS Version : 10.3

Observation 16268 - L2 Version 1
Chandra X-Ray Center

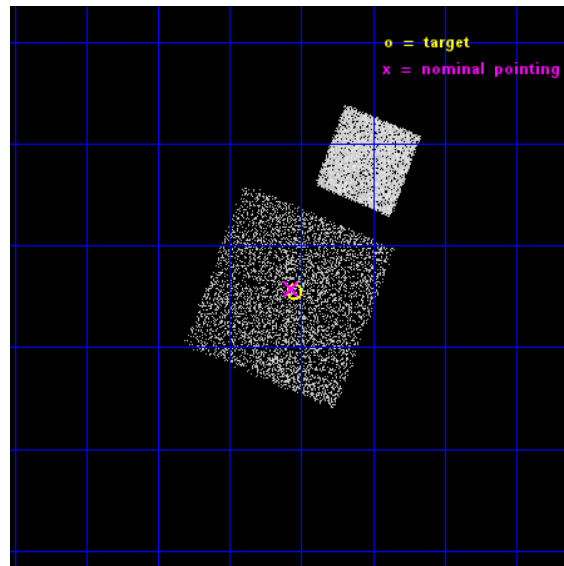
L2 Processing Date : Nov 15 2014

Contents

1	Front	2
2	OBI	3
2.1	OBI	3
2.1.1	Images	3
2.1.2	Bias	3
2.1.3	Parameters	4
2.1.4	Events	4
2.2	Compared Parameters	5
2.3	Aspect	6
2.4	Star Slots	9
2.4.1	Slot 3	9
2.4.2	Slot 4	10
2.4.3	Slot 5	11
2.4.4	Slot 6	12
2.4.5	Slot 7	13
2.5	FID Slots	14
2.5.1	Slot 0	14
2.5.2	Slot 1	15
2.5.3	Slot 2	16
A	Summary	17
A.1	Status	17
A.2	Comments	17

1 Front

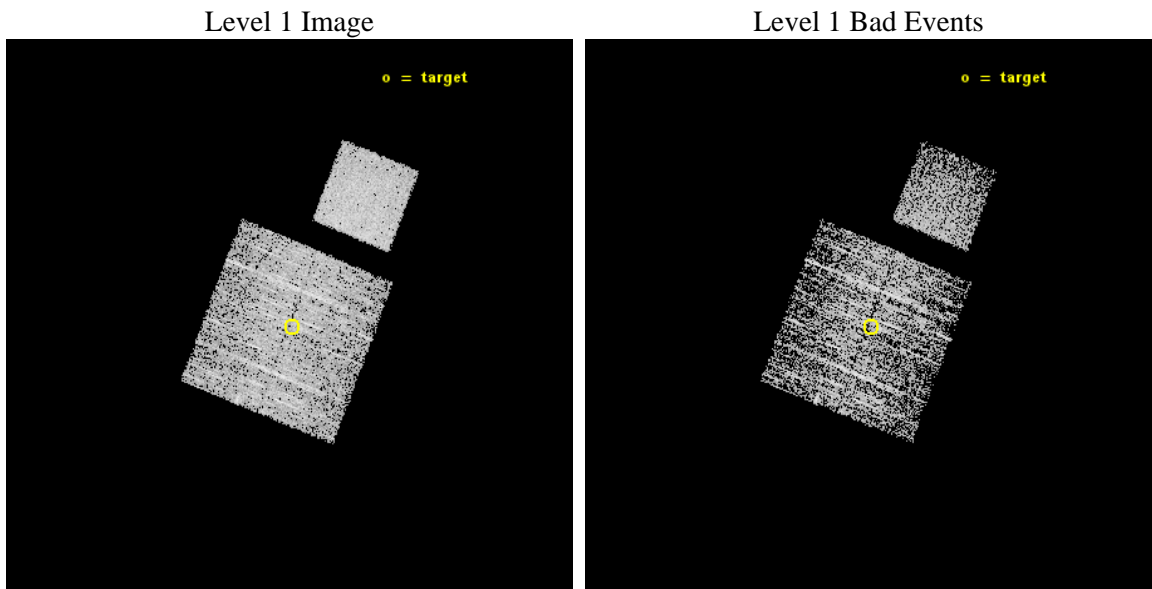
seq_num	703012	Sequence number
obs_id	16268	Observation id
title	X-ray Properties of Selected SDSS Stripe 82 Red Quasars	Proposal t
observer	Dr. Stephen Murray	Principal investigator
object	J034902.64+005430.4	Source name
dtcycle	0	
cycle	P	events from which exps? Prim/Second/Both
ra_targ	57.260833	Observer's specified target RA [deg]
dec_targ	0.090833	Observer's specified target Dec [deg]
ra_nom	57.267147236798	Nominal RA [deg]
dec_nom	0.095944792721545	Nominal Dec [deg]
roll_nom	21.629739833381	Nominal Roll [deg]
revision	1	Processing version of data
ontime	3069.0000236034	Sum of GTIs [s]
livetime	3028.9012789301	Livetime [s]
ontime0	3069.0000236034	Sum of GTIs [s]
ontime1	3069.0000236034	Sum of GTIs [s]
ontime2	3069.0000236034	Sum of GTIs [s]
ontime3	3069.0000236034	Sum of GTIs [s]
ontime7	3069.0000236034	Sum of GTIs [s]
l2events	14987	Number of level 2 events



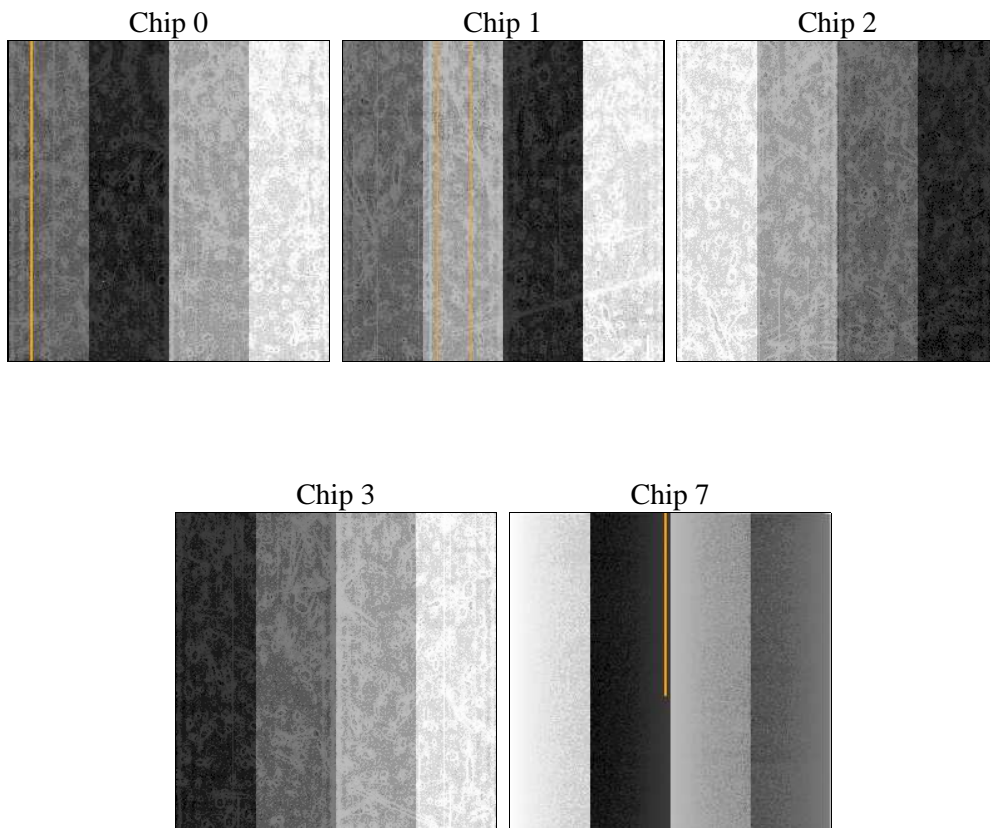
2 OBI

2.1 OBI

2.1.1 Images



2.1.2 Bias



2.1.3 Parameters

obi_num	1	Obi number	sched_exp_time	3000.000000	[s] Scheduled observation exposure time
ascdsver	10.3	Processing system revision	ontime	3069.0000236034	Sum of GTIs [s]
caldsver	4.6.4	 	ontime0	3069.0000236034	Sum of GTIs [s]
date	2014-11-15T05:57:23	Date and time of file creation	ontime1	3069.0000236034	Sum of GTIs [s]
revision	1	Processing version of data	ontime2	3069.0000236034	Sum of GTIs [s]
			ontime3	3069.0000236034	Sum of GTIs [s]
			ontime7	3069.0000236034	Sum of GTIs [s]
			l1events	78762	Number of level 1 events

2.1.4 Events

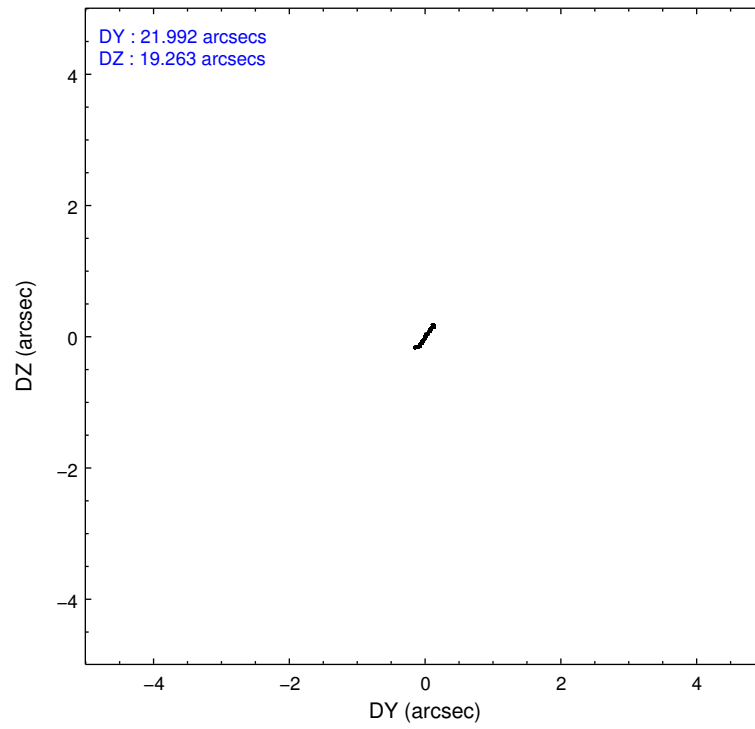
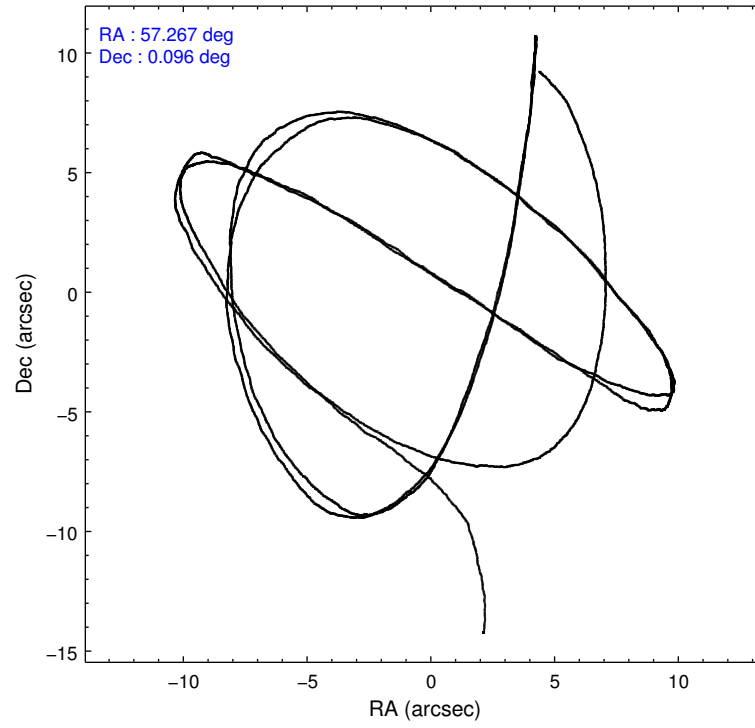
	ccd 0	ccd 1	ccd 2	ccd 3	ccd 7
level 1 events	13825	13940	15323	14570	21104
rejected events	12065	11837	13549	12859	12018
rejected %	87%	84%	88%	88%	56%

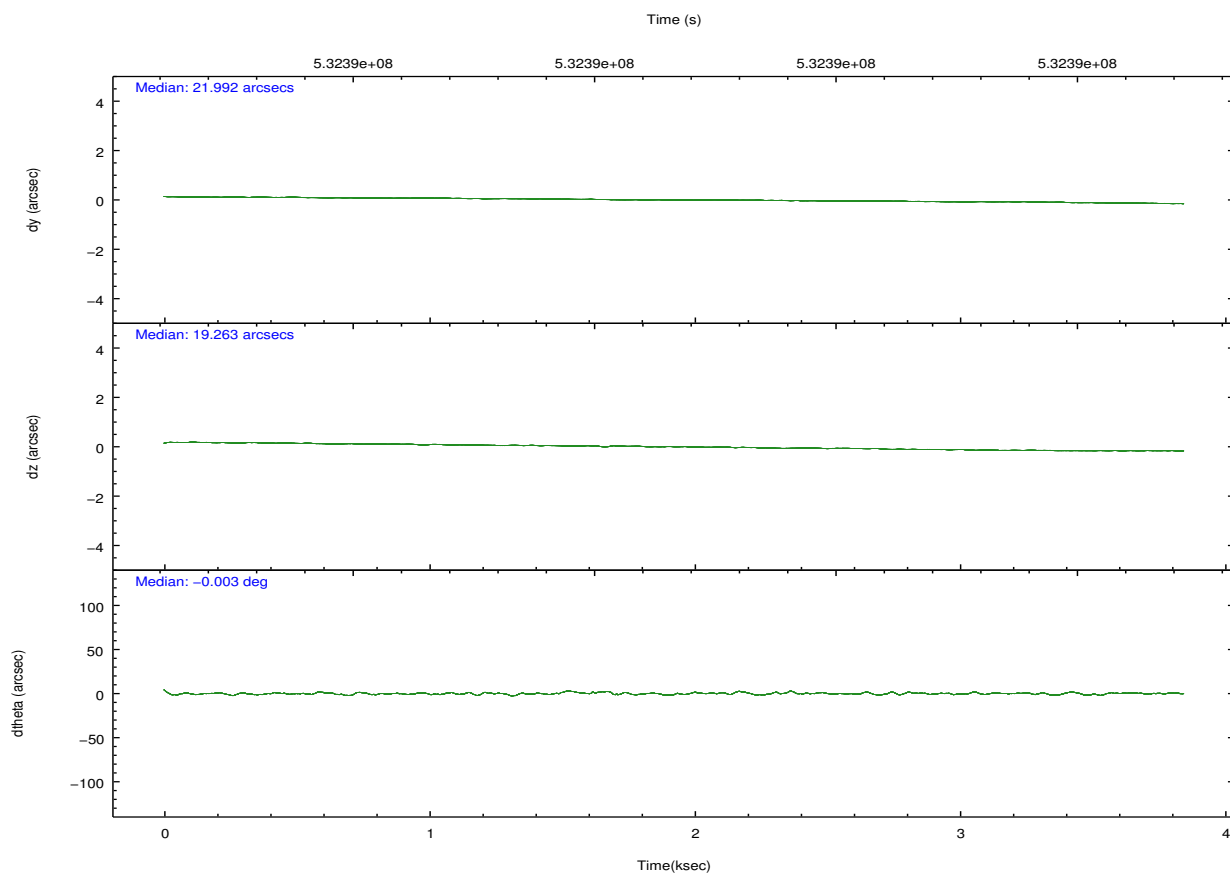
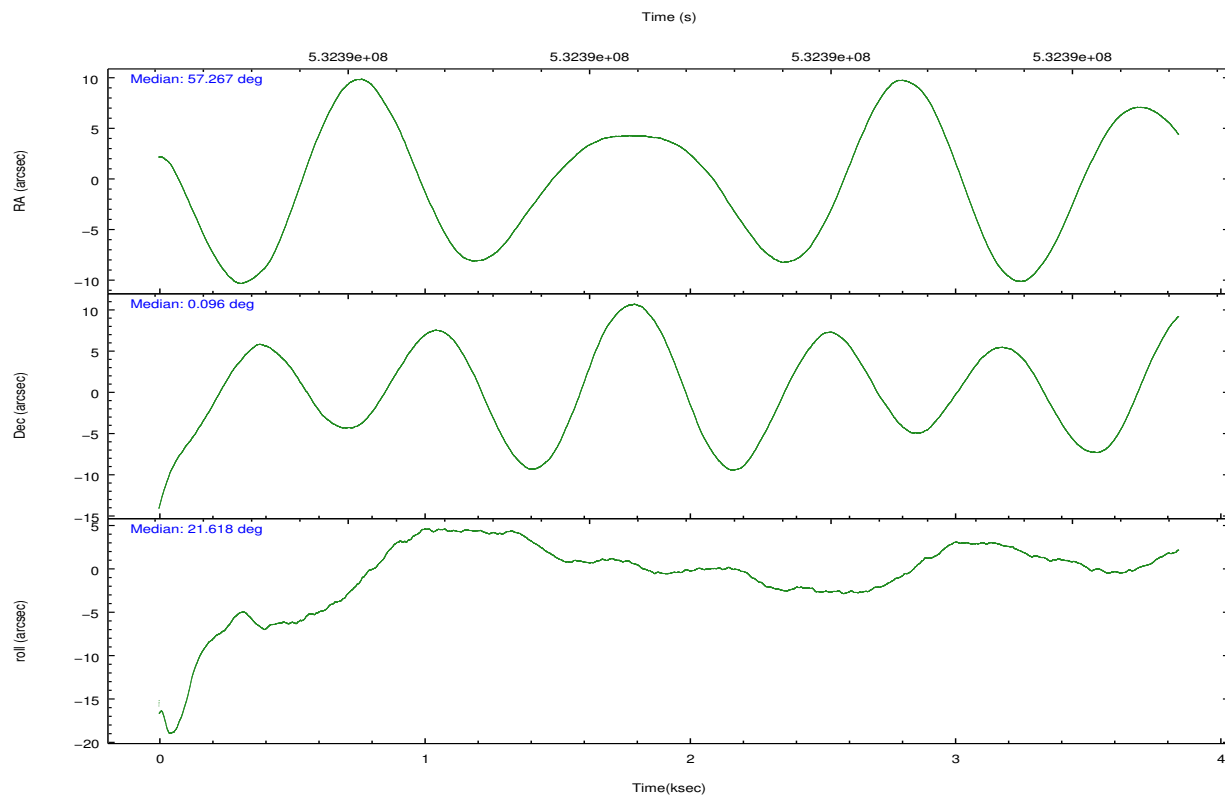
	ccd 0	ccd 1	ccd 2	ccd 3	ccd 7
grade 0 events	585	729	569	562	770
	4%	5%	3%	3%	3%
grade 1 events	4	9	4	9	21
	0%	0%	0%	0%	0%
grade 2 events	432	528	463	435	1862
	3%	3%	3%	2%	8%
grade 3 events	194	201	221	209	759
	1%	1%	1%	1%	3%
grade 4 events	181	210	170	185	771
	1%	1%	1%	1%	3%
grade 5 events	752	808	771	831	2194
	5%	5%	5%	5%	10%
grade 6 events	371	435	352	320	4941
	2%	3%	2%	2%	23%
grade 7 events	11306	11020	12773	12019	9786
	81%	79%	83%	82%	46%

2.2 Compared Parameters

Parameter	Planned	Actual	Parameter	Planned	Actual
Instrument	ACIS	ACIS	Obspar format version number	7	7
Detector	ACIS-01237	ACIS-01237	Obspar file type	PREDICTED	ACTUAL
Grating	NONE	NONE	Obspar update status	NONE	UPDATED
Data mode	FAINT	FAINT	CCD I0 on	Y	Y
Observation mode	POINTING	POINTING	CCD I1 on	Y	Y
[deg] Pointing RA	57.250144	57.26714723679768	CCD I2 on	Y	Y
[deg] Pointing Dec	0.074288	0.09594479272154513	CCD I3 on	Y	Y
[deg] Pointing Roll	21.421065	21.62973983338073	CCD S0 on	N	N
[mm] SIM focus pos	-0.782348	-0.7809083437167272	CCD S1 on	N	N
[mm] SIM defocus	0	0.001439871863259334	CCD S2 on	N	N
[mm] SIM translation stage pos	-233.592463	-233.5874344608287	CCD S3 on	O1	Y
[mm] SIM translation stage offset	0	-0.005018542100998502	CCD S4 on	N	N
[s] Observation start time (MET)	532390250.184000	532388433.63774	CCD S5 on	N	N
Observation start date	2014-11-14T22:09:43	2014-11-14T21:40:33	Number of optional ACIS chips dropped	0	0
[s] Observation end time (MET)	532393250.184000	532394071.65055	On-chip summing requested	N	N
Observation end date	2014-11-14T22:59:43	2014-11-14T23:14:31	Subarray requested	NONE	NONE
Read mode	TIMED	TIMED	Alternating exposures requested	N	N
			[s] Primary exposure time	0.000000	3.1

2.3 Aspect



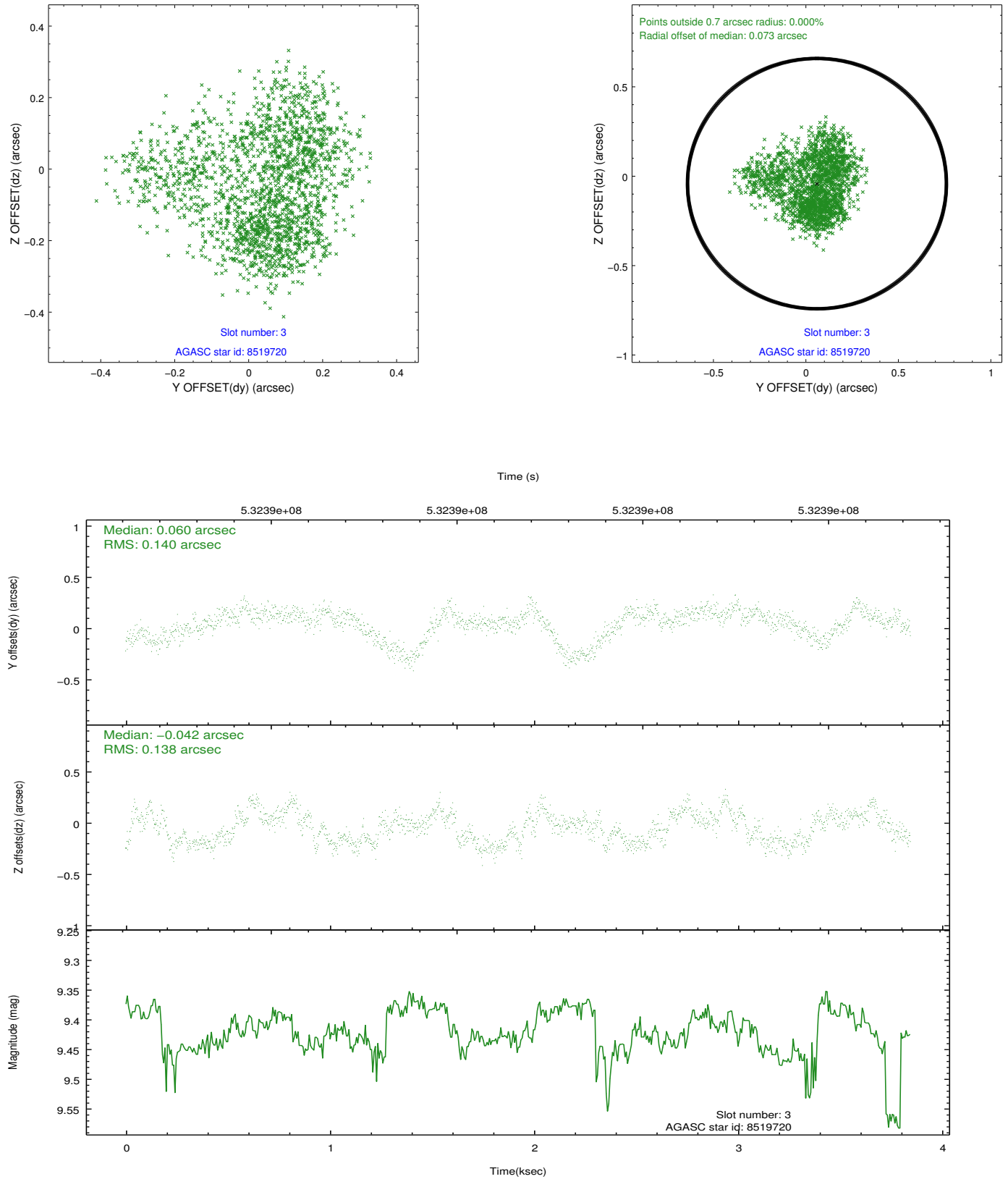


Slot Statistics

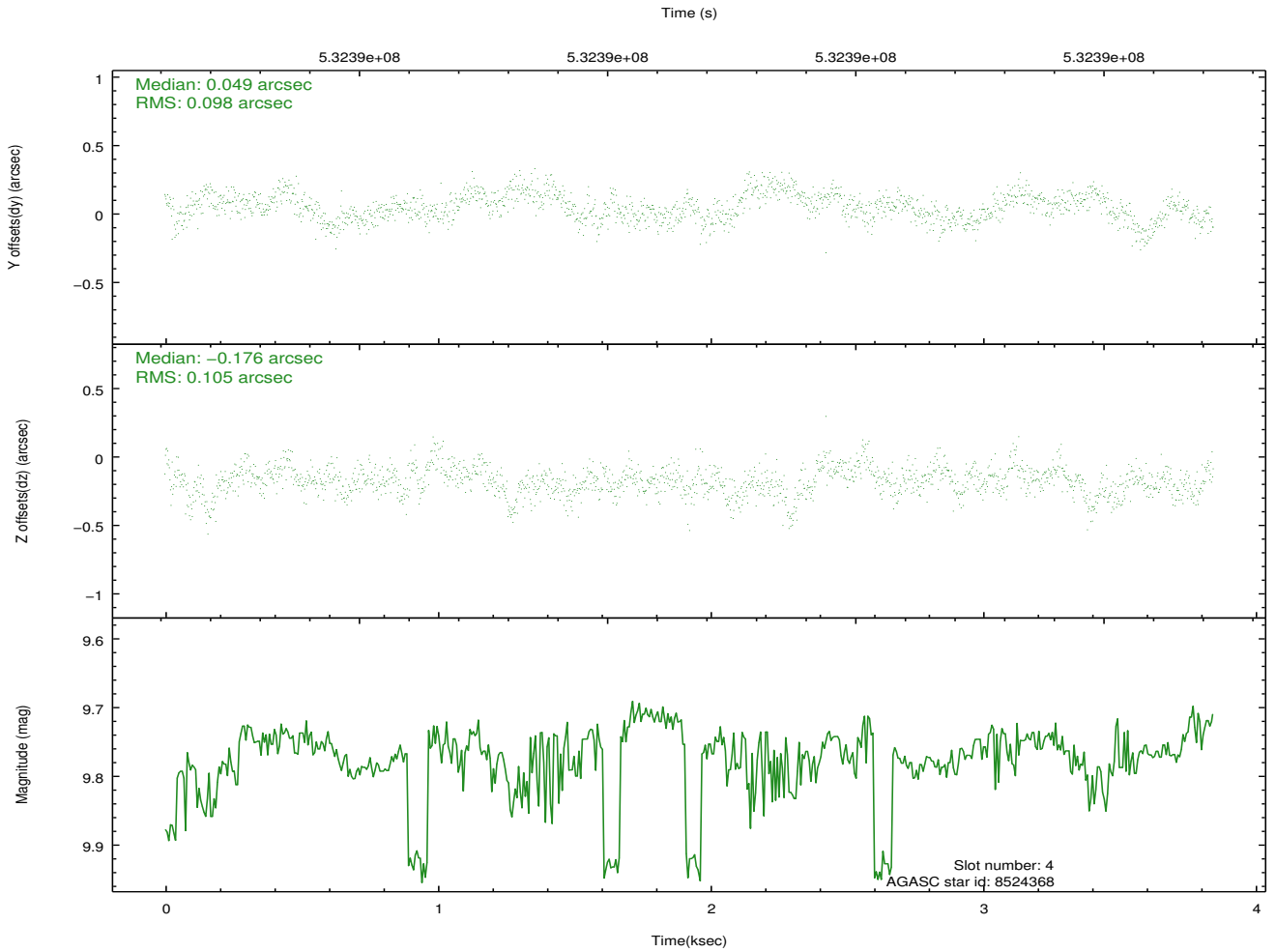
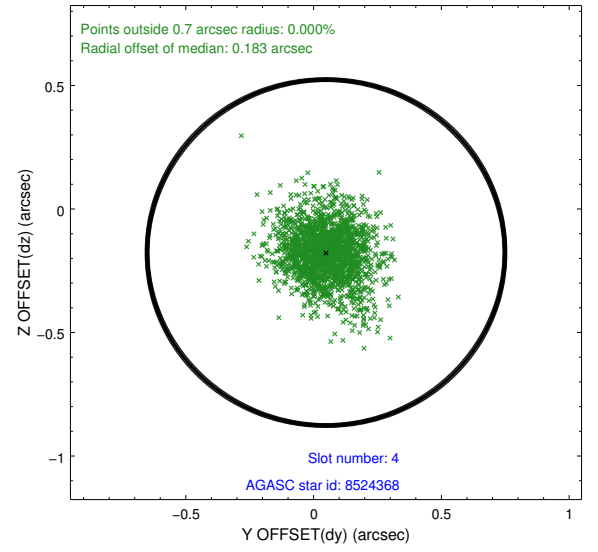
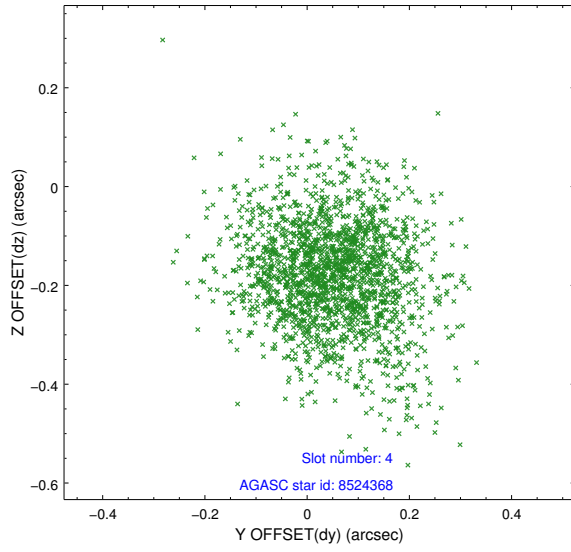
slot	status	used	id	mag	n_pts	med_dy	med_dz	dr1	dr2	ra	dec	mean_y	mean_z
0	FID		ACIS-I-1	7.04	938	-0.100	0.063	0.010	0.017	0.000000	0.000000	917.19	-842.89
1	FID		ACIS-I-2	6.95	938	-0.175	-0.134	0.007	0.011	0.000000	0.000000	-776.08	-850.37
2	FID		ACIS-I-4	6.98	938	0.177	0.138	0.007	0.012	0.000000	0.000000	2136.57	1056.18
3	GUIDE	used	8519720	9.42	1872	0.060	-0.042	0.211	0.328	57.448434	0.327615	998.11	588.57
4	GUIDE	used	8524368	9.77	1874	0.049	-0.176	0.146	0.257	56.911786	0.522858	-543.38	1948.30
5	GUIDE	used	8526432	9.38	1875	0.015	-0.126	0.153	0.248	56.999243	0.371574	-449.92	1327.10
6	GUIDE	used	618272144	8.99	1877	0.151	0.280	0.116	0.178	57.377344	-0.355855	-138.40	-1607.72
7	GUIDE	used	618398160	8.64	1874	-0.261	0.067	0.105	0.160	57.783803	-0.031142	1650.14	-1055.45

2.4 Star Slots

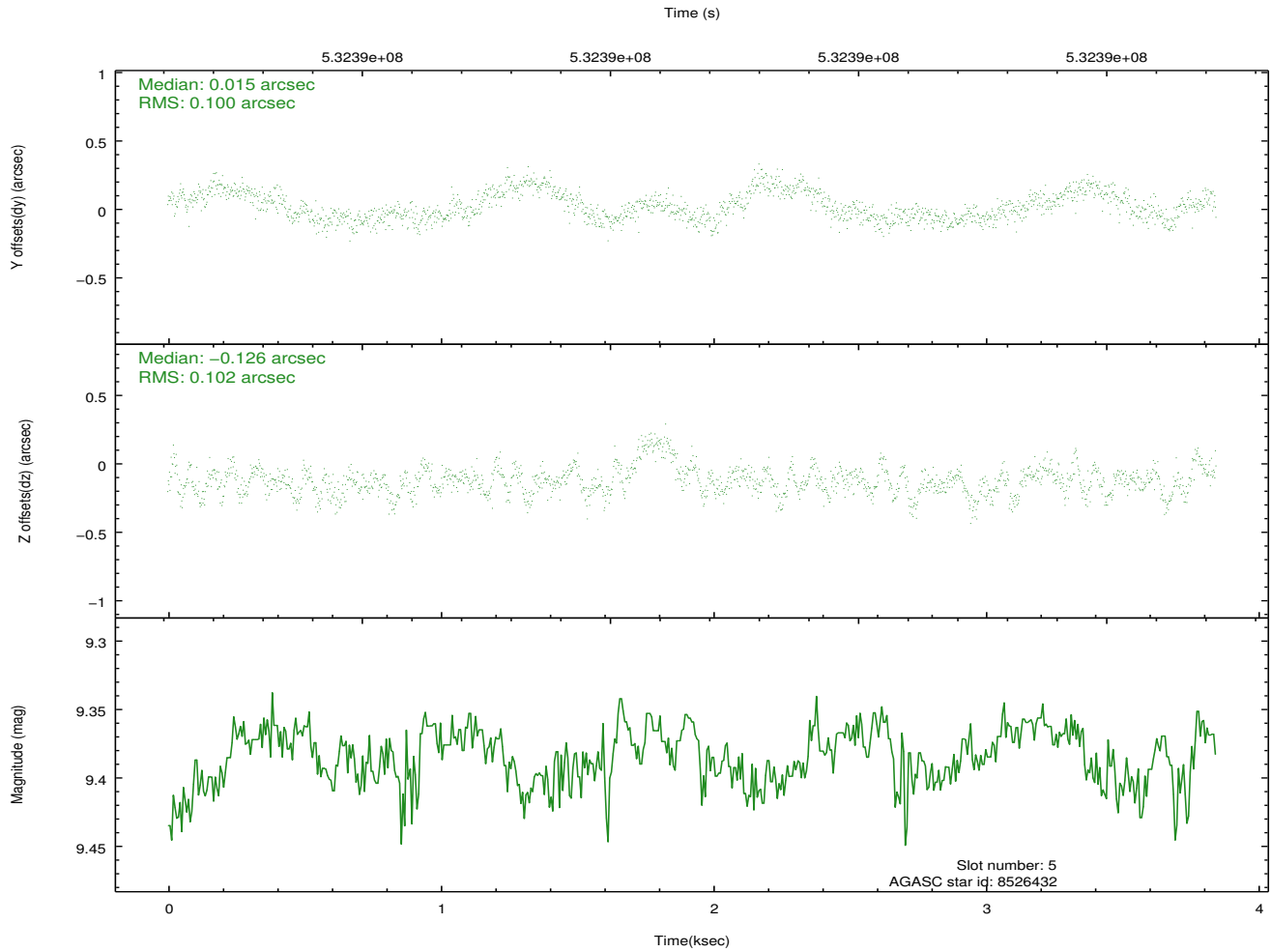
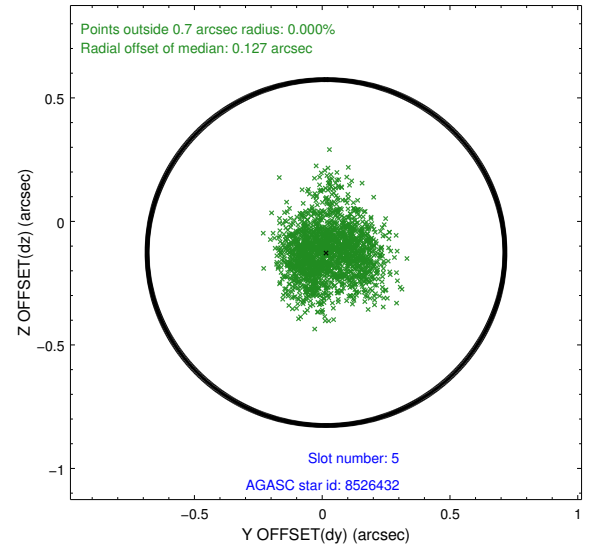
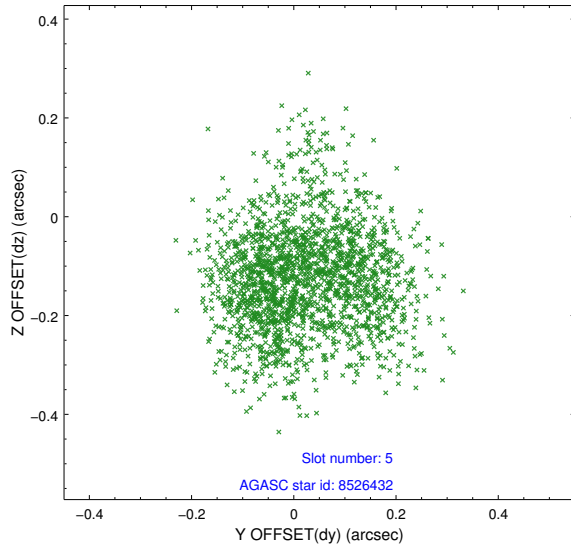
2.4.1 Slot 3



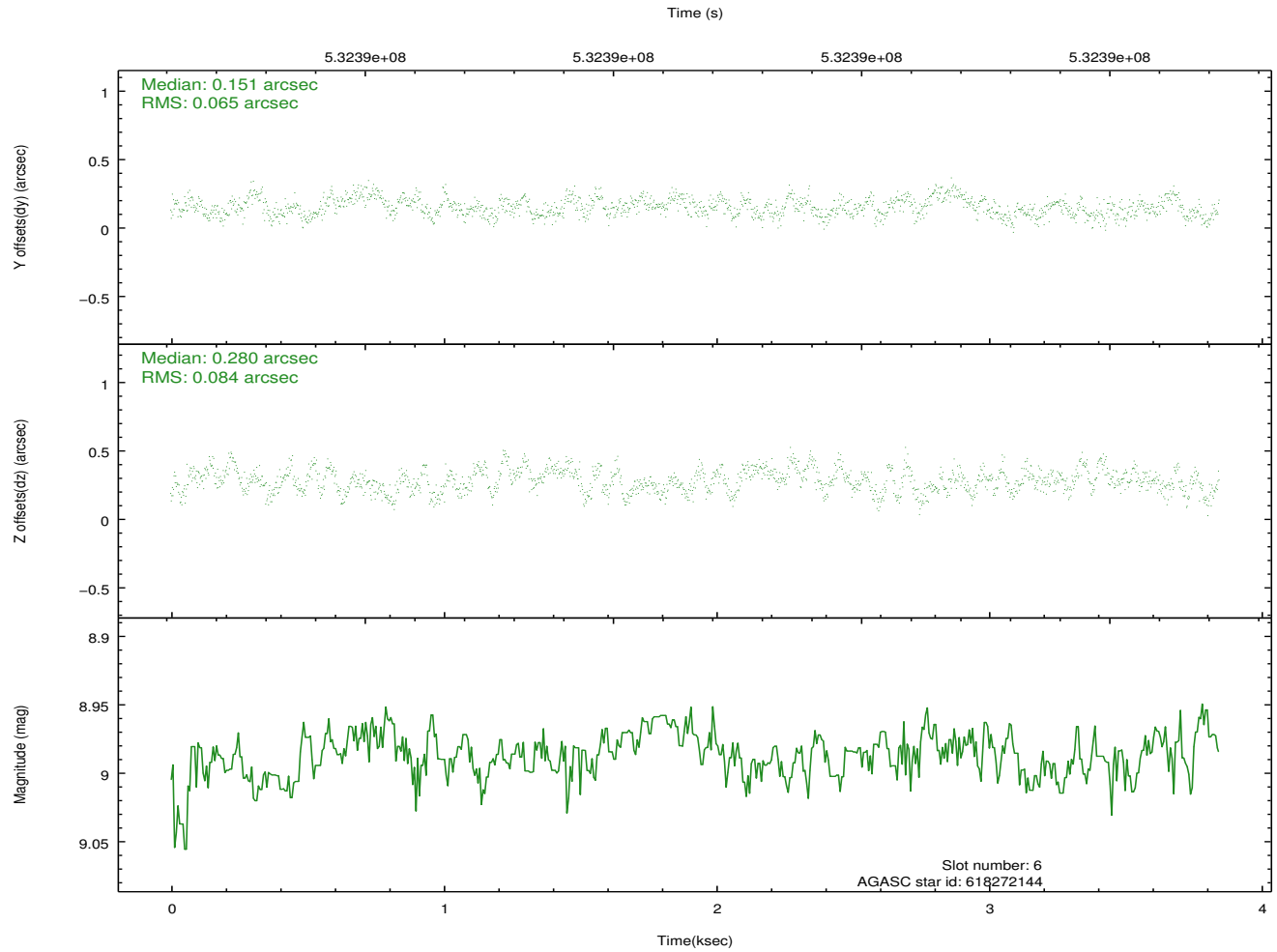
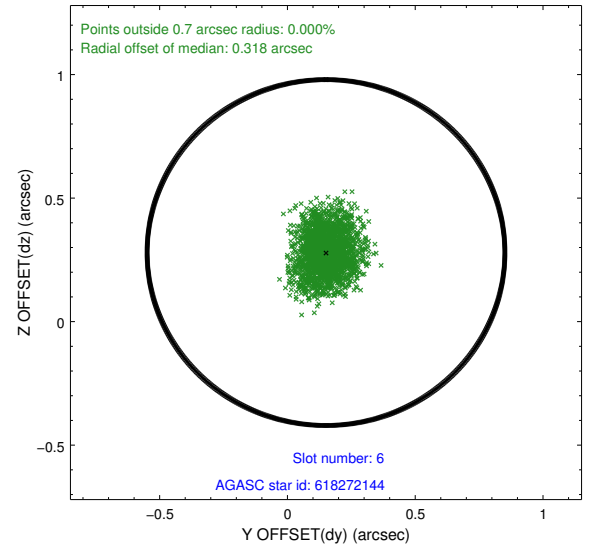
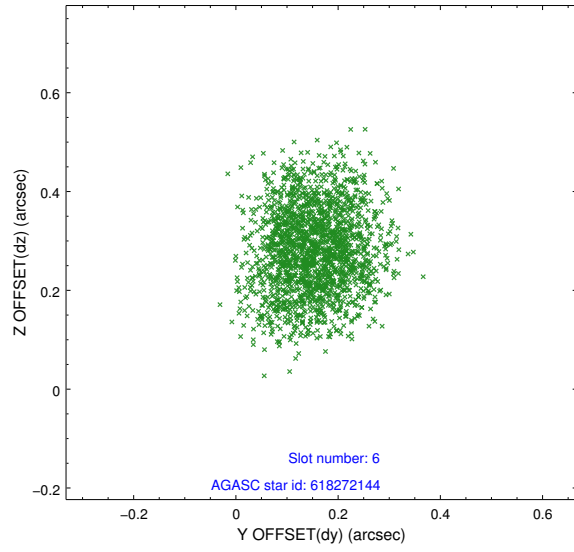
2.4.2 Slot 4



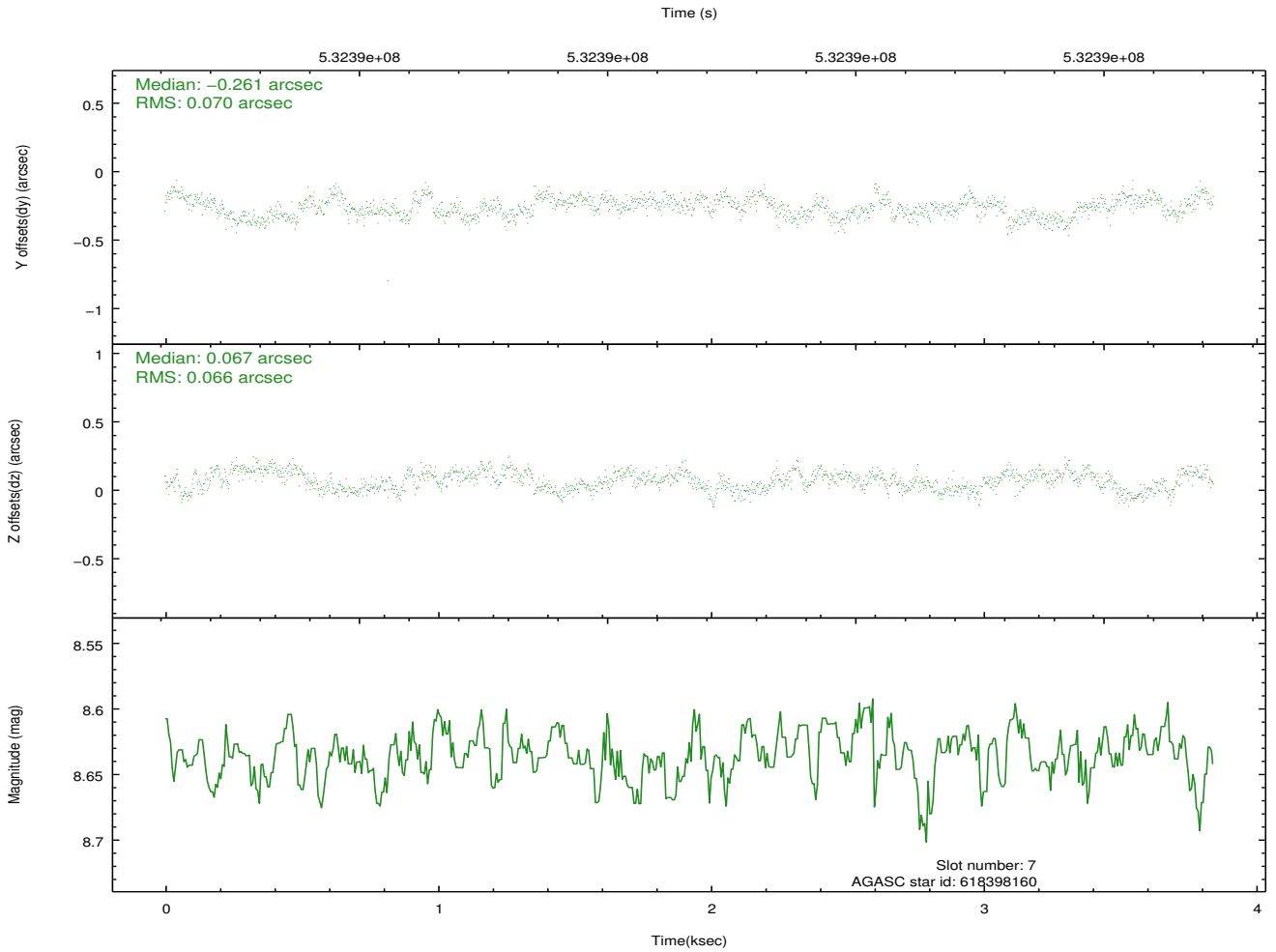
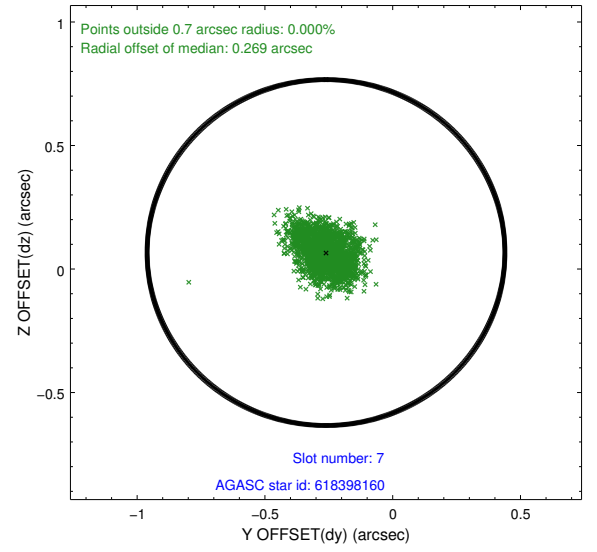
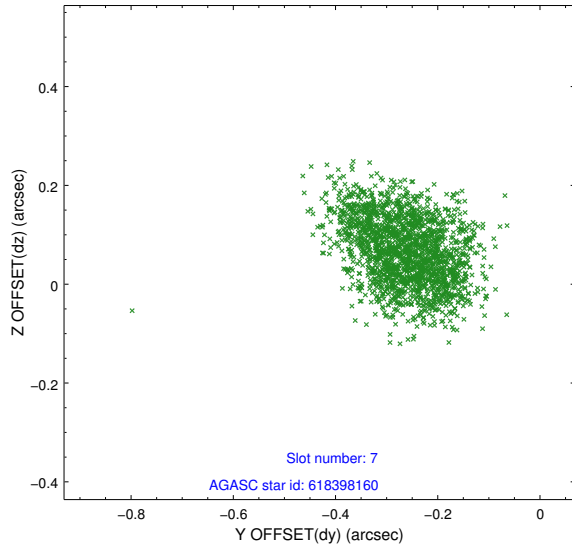
2.4.3 Slot 5



2.4.4 Slot 6

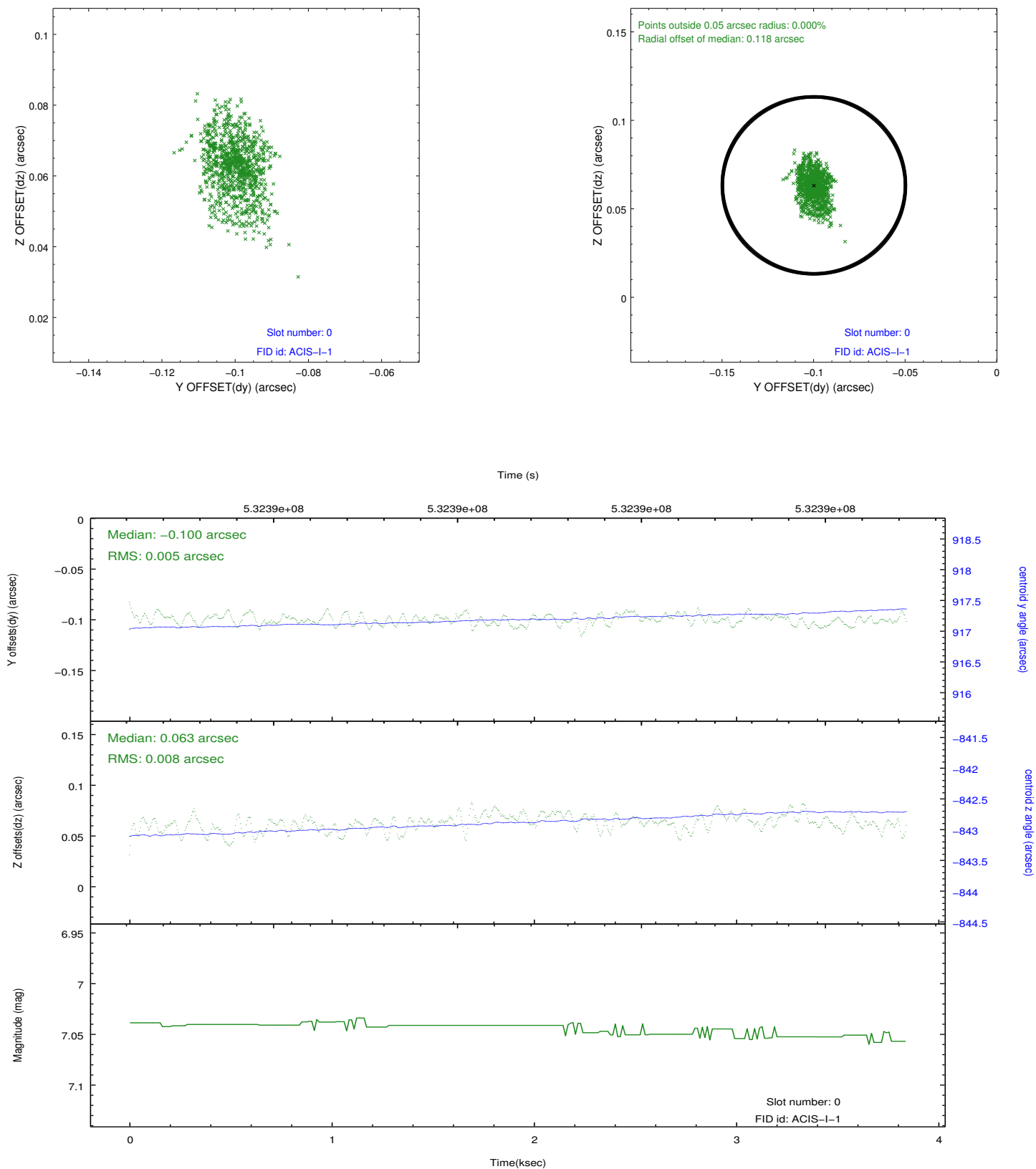


2.4.5 Slot 7

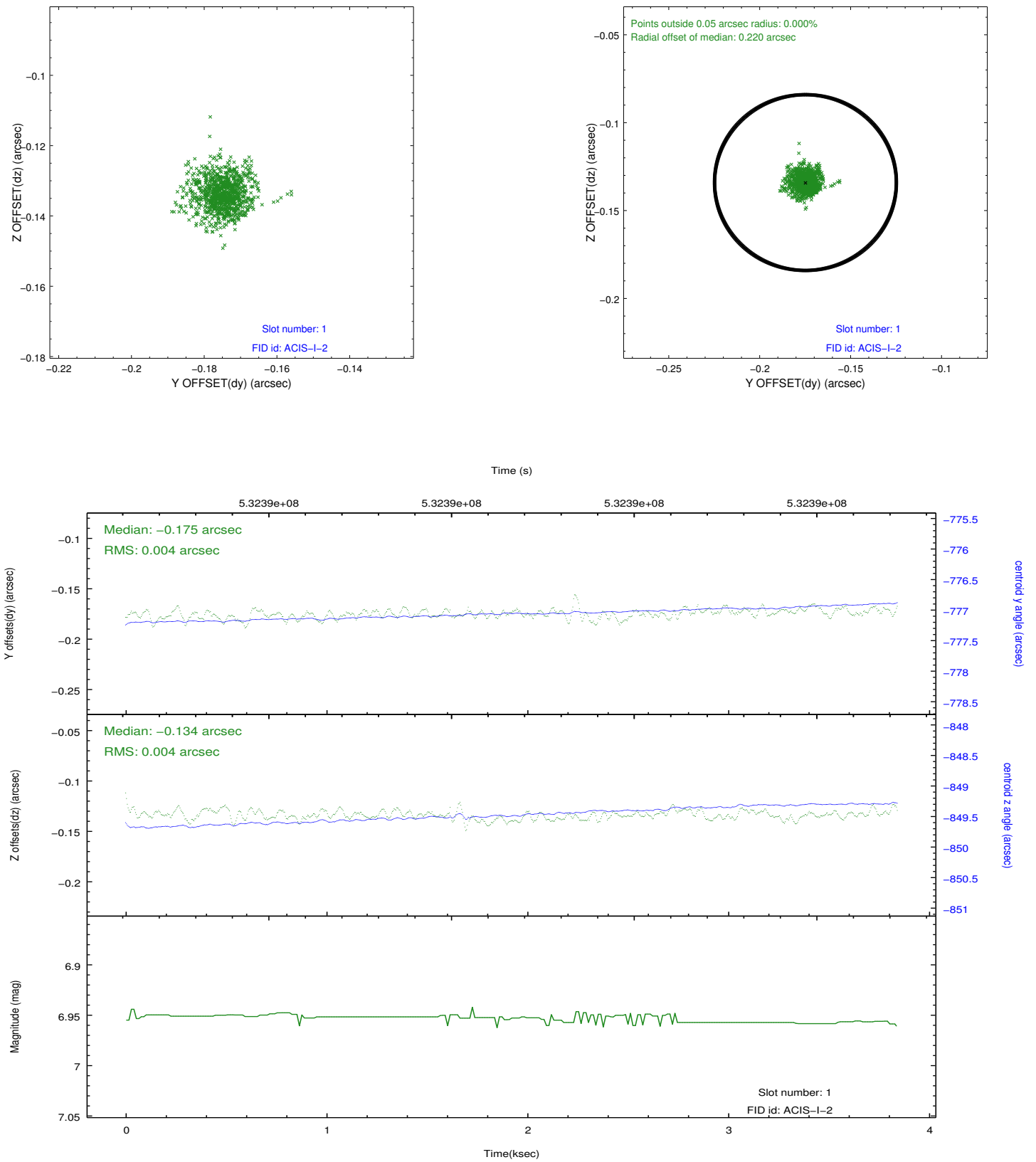


2.5 FID Slots

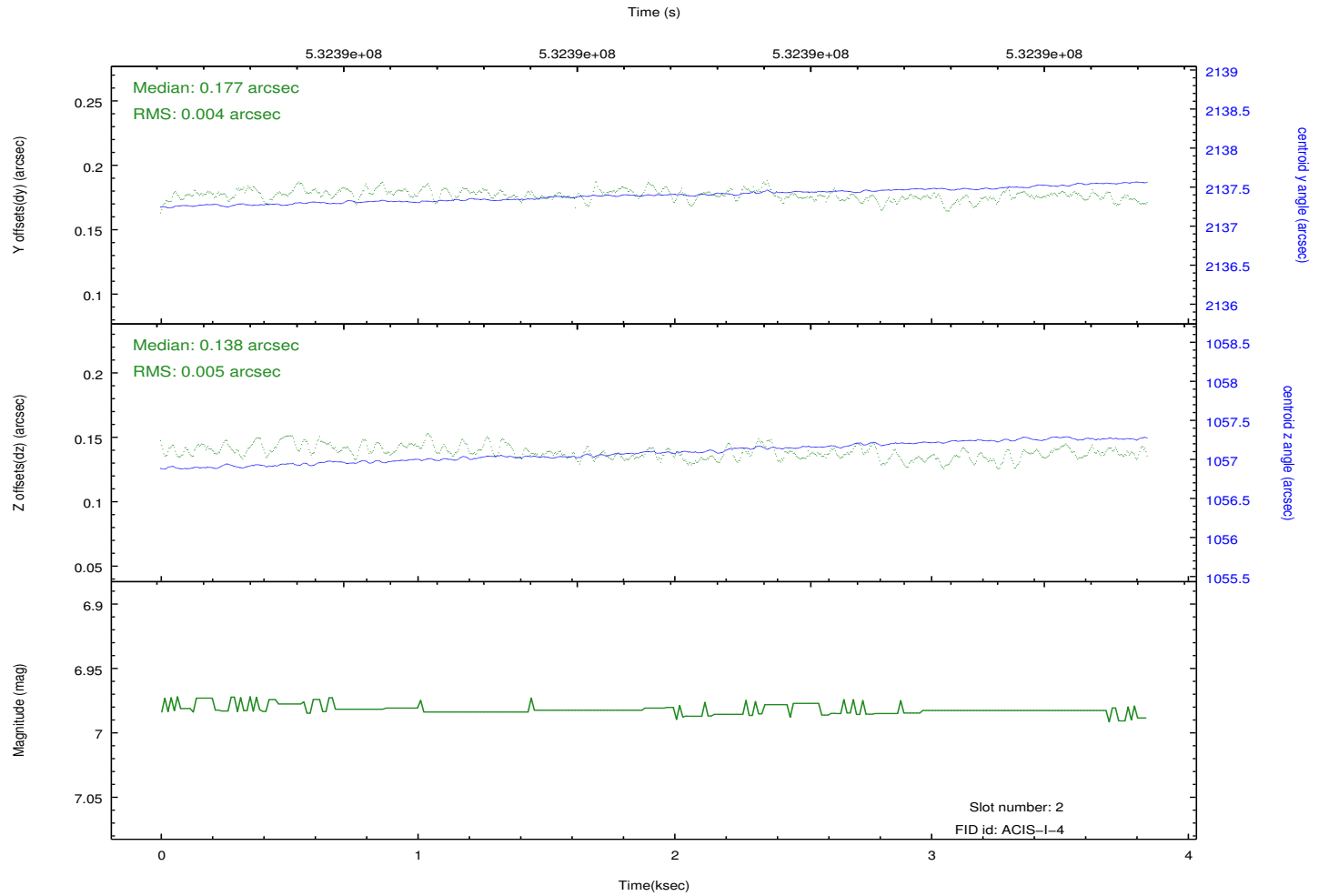
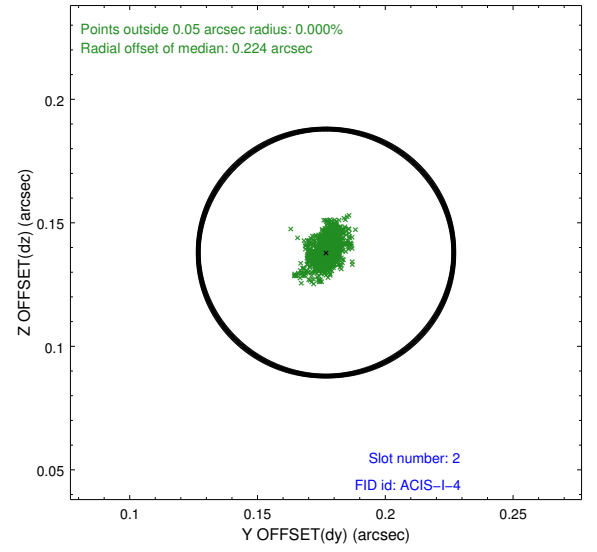
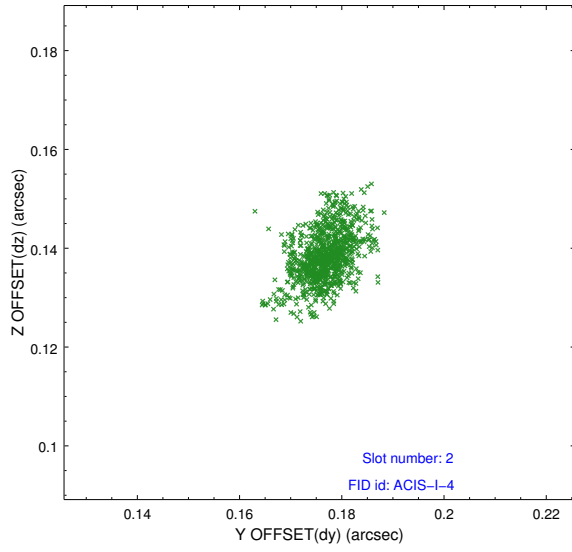
2.5.1 Slot 0



2.5.2 Slot 1



2.5.3 Slot 2



A Summary

A.1 Status

V&V Scientist	Joy Nichols
V&V Date (YYYY-MM-DD)	2014.11.17
V&V Edition	1
V&V Disposition and Status	OK
V&V Charge Time	3.0690000236034

A.2 Comments